

THE RIDER[®] WYNWOOD

DEVELOPER



Diego Ojeda - Rilea Group, President
Principal - CIPRÉS



Alan Ojeda - Rilea Group, CEO



Founded in 1981, Rilea Group has been at the forefront of Miami's real estate development landscape, leaving an indelible mark through iconic buildings like J.P. Morgan's headquarters at 1450 Brickell. With a legacy spanning over four decades, our mission is unwavering: to be a beacon of innovation, progress, and community enrichment in the world of real estate development.

Our enduring mission is to shape urban landscapes, enrich lives, provide financial return for our partners and leave a lasting legacy of excellence in real estate development.

www.RileaGroup.com

ORAL REPRESENTATIONS CANNOT BE RELIED UPON AS CORRECTLY STATING REPRESENTATIONS OF THE DEVELOPER. FOR CORRECT REPRESENTATIONS, MAKE REFERENCE TO THIS BROCHURE AND TO THE DOCUMENTS REQUIRED BY SECTION 718.503, FLORIDA STATUTES, TO BE FURNISHED BY A DEVELOPER TO A BUYER OR LESSEE.

**EVERYTHING
HAS CHANGED.
YOUR LIFE IS
DIFFERENT.
YOU TRAVEL
DIFFERENT.
NOW YOU CAN**

own different.



TRENDSETTERS & PIONEERS WELCOME



*ARTIST CONCEPTUAL RENDERING. MAY BE CHANGED WITHOUT NOTICE.



ICONICIMAGES
FINE ART ARCHIVES PUBLISHING CREATIVE

WYNWOOD RESIDENCES

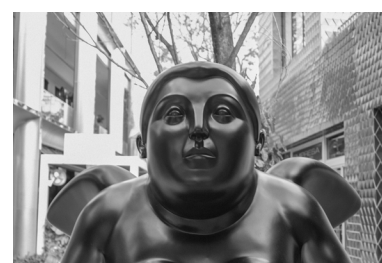
**DESIGN
DISTRICT**

WYNWOOD

**MIAMI
MIDTOWN**

EDGEWATER

(Why pick one when you can have them all?)





YOUR WYNWOOD

The Wynwood neighborhood is rapidly transforming into a vibrant hub for living and leisure. With galleries, sidewalk cafes, and even Michelin-starred restaurants, it's like a slice of New York infused with Miami's sun-soaked style.

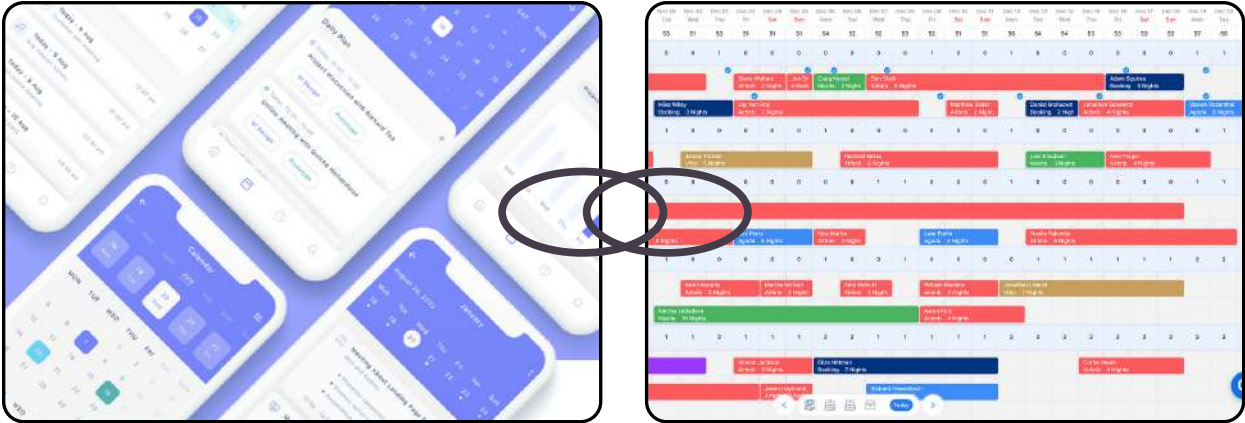
WYNWOOD BY THE NUMBERS (2023)

15M+	\$590M	1,736	8K+
ANNUAL VISITORS	SPENT BY VISITORS	RESIDENTS	LOCAL JOBS

RIDER LINK

GLOBAL ACCESS INTERFACE

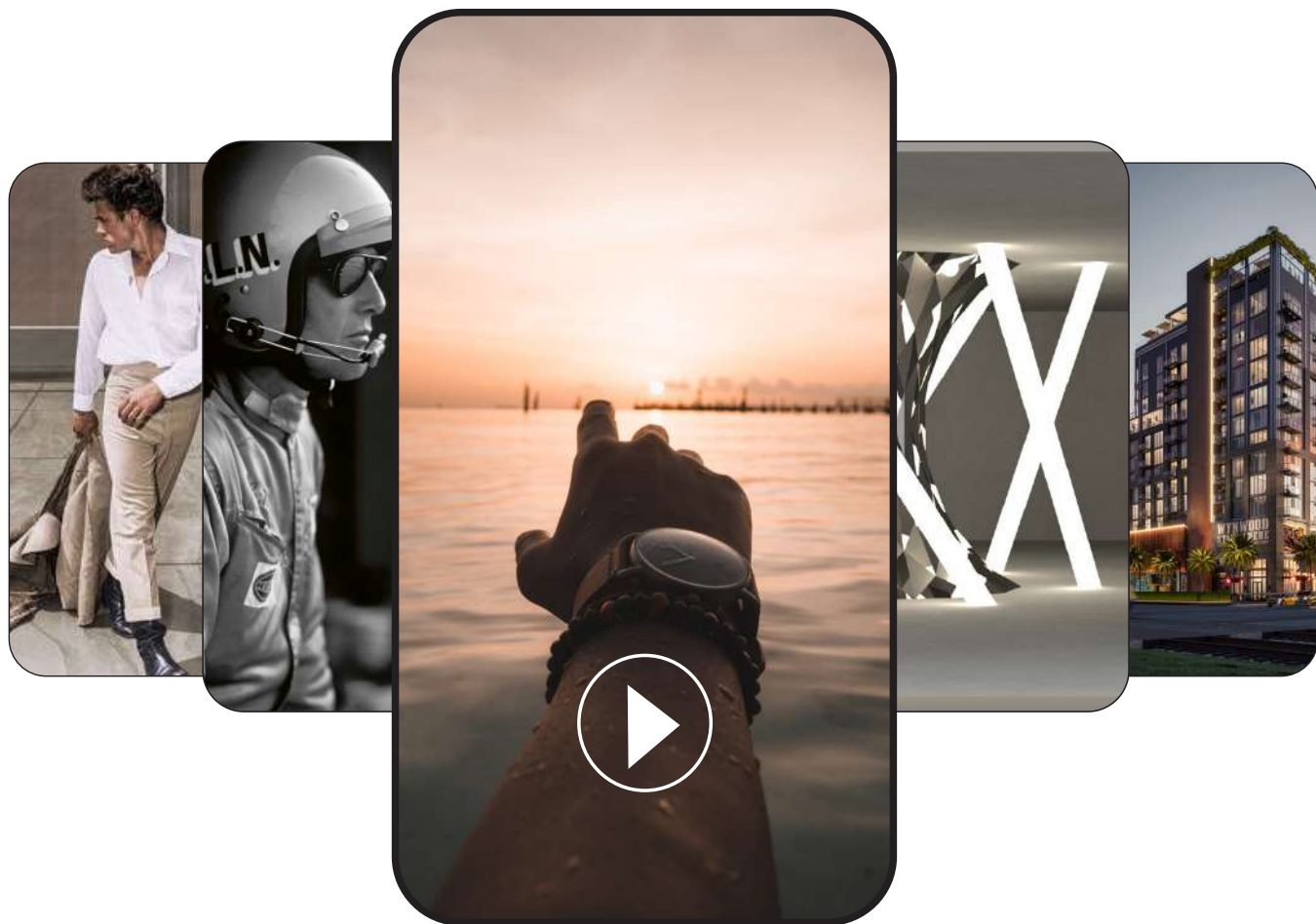
COMBINING ROBUST SOFTWARE WITH THE PERSPECTIVE OF A DIGITAL NOMAD, WE ENABLE YOU REAL-TIME ACCESS TO YOUR RESIDENCE MAINTENANCE, RENTAL INCOME, BILL PAY AND EVEN MANAGE ALL YOUR FRIENDS AND SHORT TERM RENTAL GUESTS AS THEY COMPETE FOR TIME ON YOUR CALENDAR.



THE RIDER[®] WYNWOOD

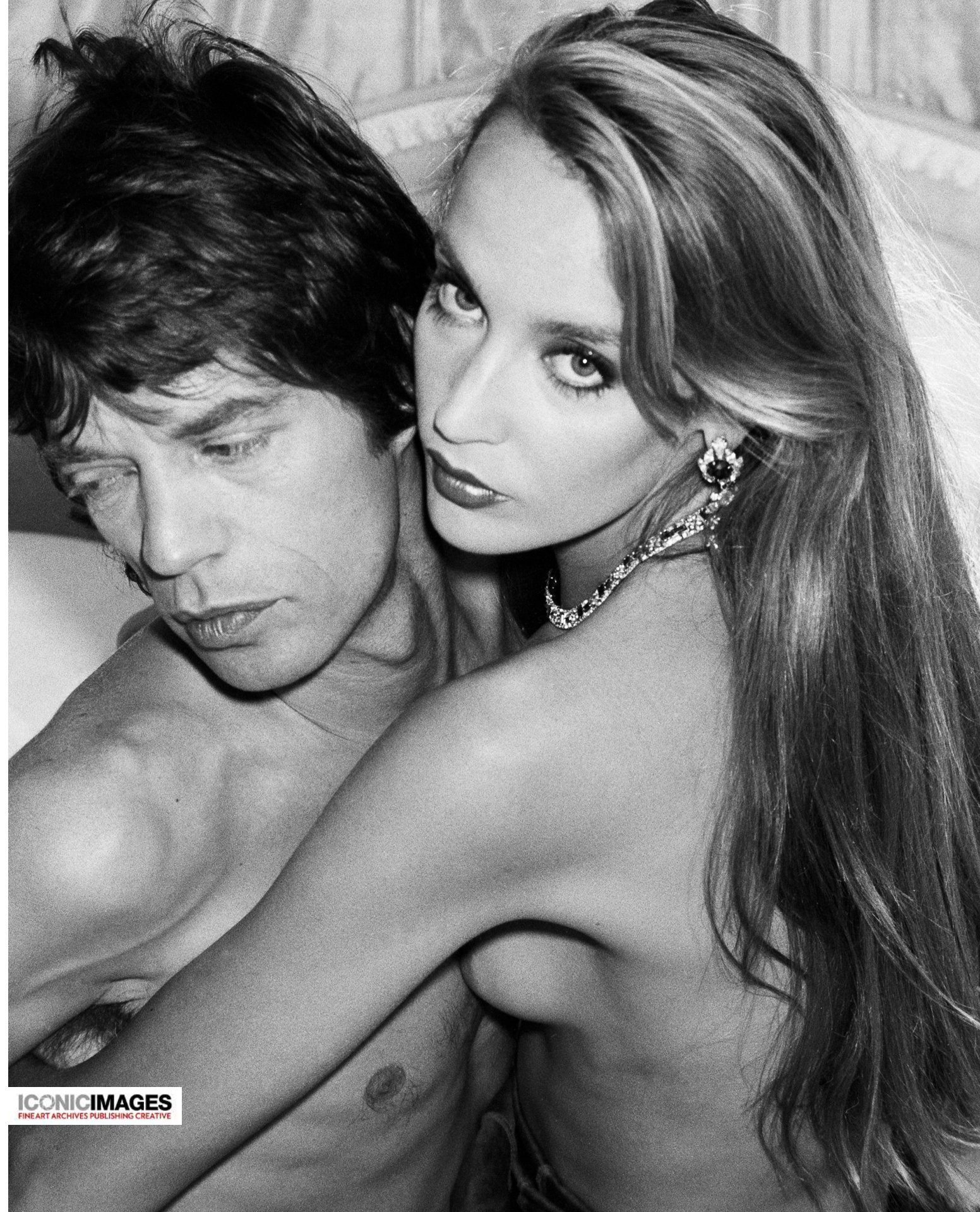


*ARTIST CONCEPTUAL RENDERING. MAY BE CHANGED WITHOUT NOTICE.



A lifestyle designed around changing lives - where we now travel as we desire while staying connected until returning to our home.

**FOR NEW
DIGITAL
NOMADS** *and YOU*



ICONICIMAGES
FINEART ARCHIVES PUBLISHING CREATIVE

LUXURY WITH A PERSONALITY



APPROXIMATELY 20,000* SQ FT OF AMENITIES

*THE NUMBERS MAY BE SUBJECT TO CHANGE.



WELCOME TO DIFFERENT

A **SWANKY LOBBY** *that invites an* **INDIVIDUAL OF STYLE** *who can appreciate “different” ...from a listening room called* **VINYL** *to “***DOGGY STYLE***” for your fur buddy. And yes, we also have the infra-red saunas, cold plunges, rooftop pool and Miami’s most* **ICONIC** *rock n’ roll photo collection.*



WELCOME HOME

LAUNCH

Rooftop Fitness Center with Next-Gen Digital Equipment



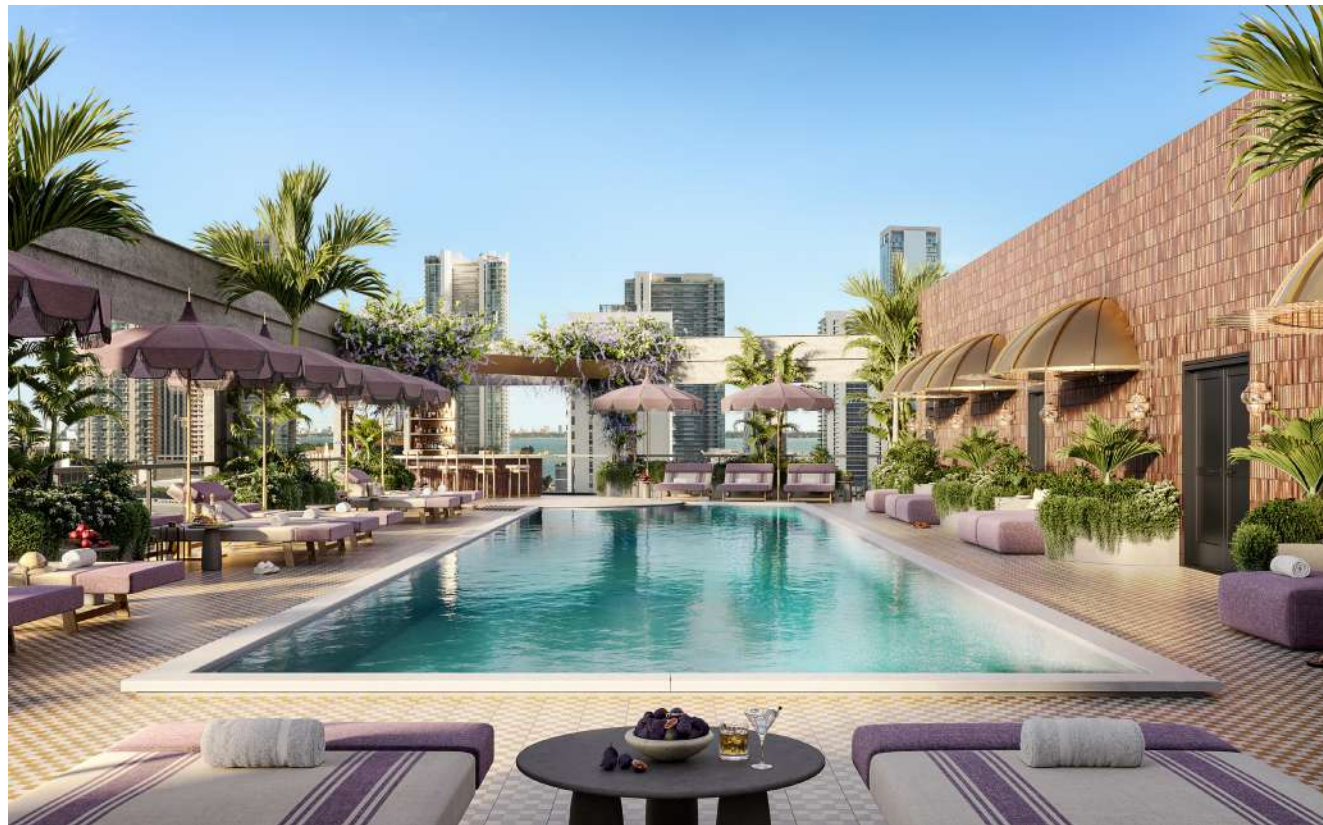
RECOVERY

Rooftop Infra-red Saunas and Cold Plunges



ABOVE IT ALL

Rooftop Pool and Outdoor Social Areas with Private Bar and Breakfast Lounge



ALL ARTIST CONCEPTUAL RENDERINGS. MAY BE CHANGED WITHOUT NOTICE.

AN ITALIAN TRADITION OF GOURMET APPLIANCES PROUDLY FEATURED IN THE RIDER *ever* IN WYNWOOD!



Known for their blend of cutting-edge technology and timeless style, Bertazzoni appliances provide not just utility but an art piece in every kitchen. Experience the harmony of form and function as you entertain guests or enjoy a quiet evening at home.

At the heart of Wynwood's vibrant culture, **THE RIDER** marries local creativity with global luxury. Bertazzoni's dedication to quality and innovation mirrors our commitment to providing an unparalleled living experience. These appliances are not just tools, but a statement of style and sophistication that complements the unique character of each residence... AND resident. With Bertazzoni, we bring a piece of Italian luxury into your everyday life, ensuring every moment at home is a testament to a life without limits.



GET CONNECTED

*Just 85 yards from your doorstep,
A NEW TRAIN STATION
will revolutionize your life and travel.*



RENDERINGS ARE A PROPOSED DESIGN BY THIRD PARTY AND MAY CHANGE WITHOUT NOTICE.



TRI & RAIL

brightline
next door

RESIDENTIAL FEATURES

By Creators, For Creators

- Fully Furnished and Finished Residences
- Spectacular Kitchen for your soire with Bertazzoni Premium Appliances
- SMART Lock Keyless Entry
- OLED Smart Screen with Apps
- Dekton Countertops Throughout Kitchen and Bathrooms.
- Porcelanosa Plumbing Fixtures
- High Efficiency Washer & Dryer
- Private Balconies in All Residences
- Pre-Wired for Internet and Cable for Maximum Performance.
- Water Views from Some Residences
- SMART Sensors for Lights, Water and AC
- Huge Lanai Terraces in Certain Residences

THE AMENITIES

The Talk of the Town

- “X Marks the Spot” Port Cochere Sculpture
- Epic lobby adorned with fine art and even Motorcycles
- Rooftop Lounge and Bar with Lush Gardens
- “Ready Set Cafe” for your on-the-go Life
- Fitness and Longevity (RESET) with Weights, Cold Plunge Garden, Infrared Saunas and Massage Room, The Mirror, Peloton Cycles and Technogym Equipment
- A Resident Lounge (VINYL) with Billiards Table, Theater Screen and DJ Turntable Ensemble.
- Rooftop Resort Styled Pool Area
- Motorcycle and Electric Bike Ride Share
- Roaming Art Gallery
- Social Media Creation Corners (BTS) with Pro Lighting and WIFI available throughout property.

SERVICES

More Like a Boutique Hotel

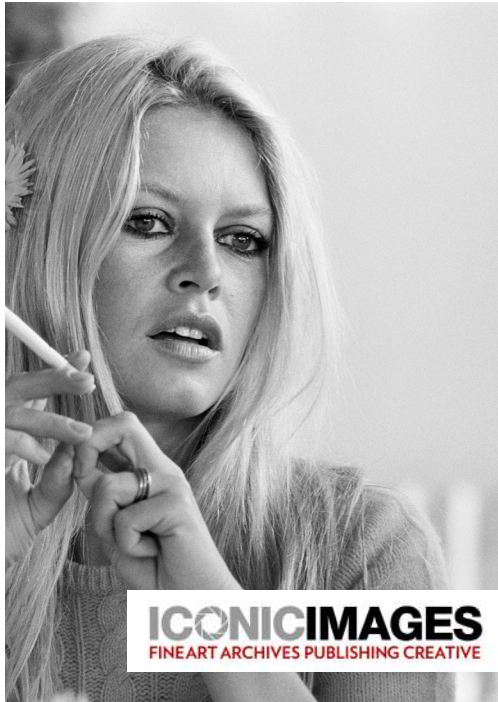
- 24 Hour Valet Service Complimentary for Owners who choose to be End Users
- 24 Hour Hotel Type Front Counter and Service
- SMART FOB Security
- Property Management for Continuity and Cleanliness
- Owner Management Office M-F
- Hospitality Style Check-In

BUILDING FEATURES

Artistic and Certified Chic

- 146 Influential Residences
- Short-Term Allowed with Optional Management by Third Party
- 11,200 SF Ground Floor and Rooftop Retail
- 85 Yards from Scheduled Train Station
- Windstorm Impact Glass Throughout
- Vaulted Ceilings in Lobby with Custom Motorcycle Bookcase
- Surround Sound Available Throughout
- Collectible Art Collection
- Pet Friendly and “Doggy-Style” Pet Spa
- Optimum Location in Miami
- Electric Vehicle Charging Stations

AND AN *ICONIC* PERMANENT PHOTO COLLECTION ONLY AT THE RIDER



THE RIDER[®] TEAM WYNWOOD



RILEA GROUP

Developer

Founded in 1981, Rilea Group has been at the forefront of Miami's real estate development landscape, leaving an indelible mark through iconic buildings like J.P. Morgan's headquarters at 1450 Brickell. With a legacy spanning over four decades, our mission is unwavering: to be a beacon of innovation, progress, and community enrichment in the world of real estate development.

Our enduring mission is to shape urban landscapes, enrich lives, provide financial return for our partners and leave a lasting legacy of excellence in real estate development.

www.RileaGroup.com



DEFORMA STUDIO

Architect

Deforma Studio is a boutique architecture and interior design practice based in Miami FL. The firm is known for creating powerful, comfortable and pragmatic spaces. Designs ultimately focus on the positive human experience in relation to the surrounding built and natural environments.

We are committed to new explorations of space along with new creative approaches to problem solving and aesthetics. With over 35 years of combined experience, the Studio offers a wide range of comprehensive design services including architecture, interiors, planning and graphic design.

www.DeFormaStudio.com



RADYCA

Interior Design

Miami-based group of architects and designers with over 20 years of experience in the industry.

RADYCA has built a portfolio of diverse projects that convey a refined and sophisticated definition of luxury, from super-yachts to high-rise buildings.

RADYCA's mission is to deliver a hands-on, tailored experience that adds value to real estate and other investments through the use of timeless, high-end design.

www.Radyca.com



CERVERA

Real Estate Sales

Cervera Real Estate is a South Florida based family owned and operated real estate company. For nearly a half-century they have transformed the South Florida landscape and taught the industry that personalized customer service ensures the satisfaction of clients. A far reaching and unrivaled international network and decades on the ground have cultivated unique and long-lasting relationships with developers, architects, investors, and real estate firms that are crucial to the success of our clients and partners.

www.Cervera.com



ADRIANA HOYOS

Residence - Interior Design

Adriana Hoyos furnishings was created in 1994. The company has become a preeminent world-wide luxury design brand and business conglomerate with headquarters in Miami with factories, studios, offices, retail outlets and real estate in Latin America, USA, Europe and the Middle East.

The brand is globally recognized and associated with high design, use of fine materials and exceptional finishing.

www.AdrianaHoyos.com



COASTAL

Construction

Coastal Construction has been building throughout Florida since 1955. Quality work, commitment to safety, long-standing relationships and unwavering personal commitment is what sets them apart. They've earned a Top 20 Construction company ranking and a roster of public and private clients while building 15,000+ condo residences and 5,000+ hotel rooms in 60 hotels.

Most recently they have been working on Aston Martin Residences, the Porsche tower, the Ritz Carlton Residences in Tampa and the Residences by Armani.

www.CoastalConstruction.com



CIPRES



@WYNWOODRIDER