

FILE LOCATION: :R-01\CAD FILES\2022\22-023 1428 NW 14 AVE\DWG\CURRENT\1SHEETS\UNITS 11X17 (12.19.23)\A-1A.DWG
 PRINTED ON: 01.08.2024

1

UNIT TYPE A1A UNIT NUMBER 205, 305, 405 AND 505
 635 SF - 1BR/1BATH - (Balcony area 47 sf)

SCALE: 1/4" = 1'-0"

ARCHITECTURE
 PLANNING
 INTERIORS
 CERTIFICATION No. AA002451
 4533 PONCE DE LEON BLVD.
 Coral Gables, Florida 33146
 TEL: (305) 740-5442
 FAX: (305) 740-5443
 E-MAIL: info@beharfont.com

©2023 BEHAR FONT & PARTNERS P.A.
 THE DESIGN AND DRAWINGS FOR THIS
 PROJECT ARE THE PROPERTY OF THIS
 ARCHITECT AND ARE PROTECTED UNDER THE
 COPYRIGHT PROTECTION ACT.

SEAL

Robert Behar AR 14339
 CONSULTANT:

PROPOSED RESIDENTIAL DEVELOPMENT

RIVER NORTH
 1428 N.W. 14TH AVENUE
 MIAMI, FLORIDA 33125

CLIENT INFORMATION:
 ALTA DEVELOPER

DATE: 00-00-23

PROJECT No: 22-023

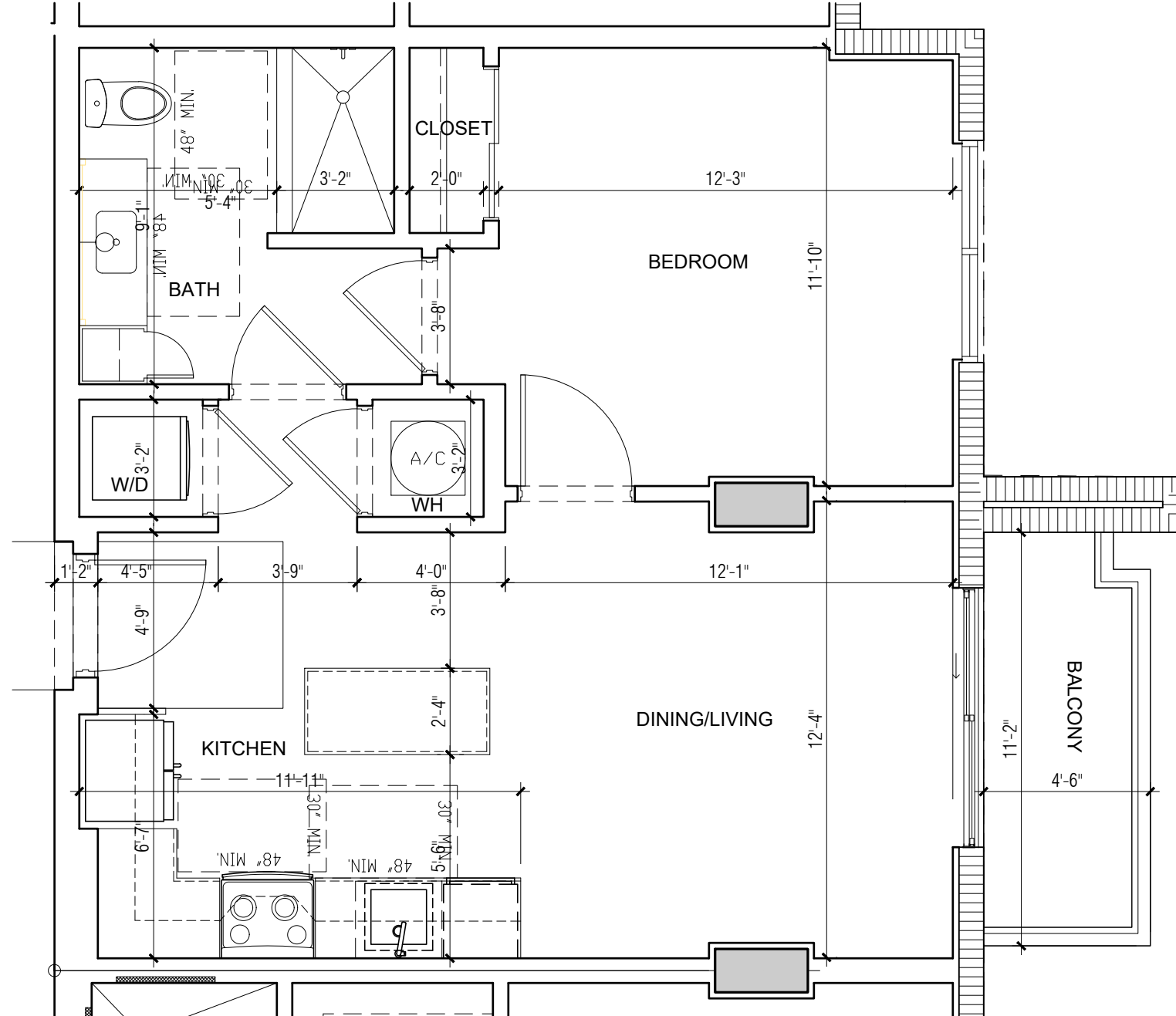
DRAWN BY:

CHECKED BY:

A-1A

BEHAR • FONT • & PARTNERS • P • A •

FILE LOCATION: :R-01\CAD FILES\2022\22-023 1428 NW 14 AVE\DWG\CURRENT\1SHEETS\UNITS 11X17 (12-19-23)\A-1B.DWG
 PRINTED ON: 01.08.2024



1

UNIT TYPE A1B UNIT NUMBER 208, 308, 408, 508, 708 AND 808
 635 SF - 1BR/1BATH - (Balcony area 49 sf)

SCALE: 1/4" = 1'-0"

ARCHITECTURE
 PLANNING
 INTERIORS
 CERTIFICATION No. AA0002451
 4533 PONCE DE LEON BLVD.
 Coral Gables, Florida 33146
 TEL: (305) 740-5442
 FAX: (305) 740-5443
 E-MAIL: info@beharfont.com

©2023 BEHAR FONT & PARTNERS P.A.
 THE DESIGN AND DRAWINGS FOR THIS
 PROJECT ARE THE PROPERTY OF THIS
 ARCHITECT AND ARE PROTECTED UNDER THE
 COPYRIGHT PROTECTION ACT.

SEAL

Robert Behar AR 14339
 CONSULTANT

PROPOSED RESIDENTIAL DEVELOPMENT

RIVER NORTH
 1428 N.W. 14TH AVENUE
 MIAMI, FLORIDA 33125

CLIENT INFORMATION:
 ALTA DEVELOPER

DATE: 00-00-23

PROJECT No: 22-023

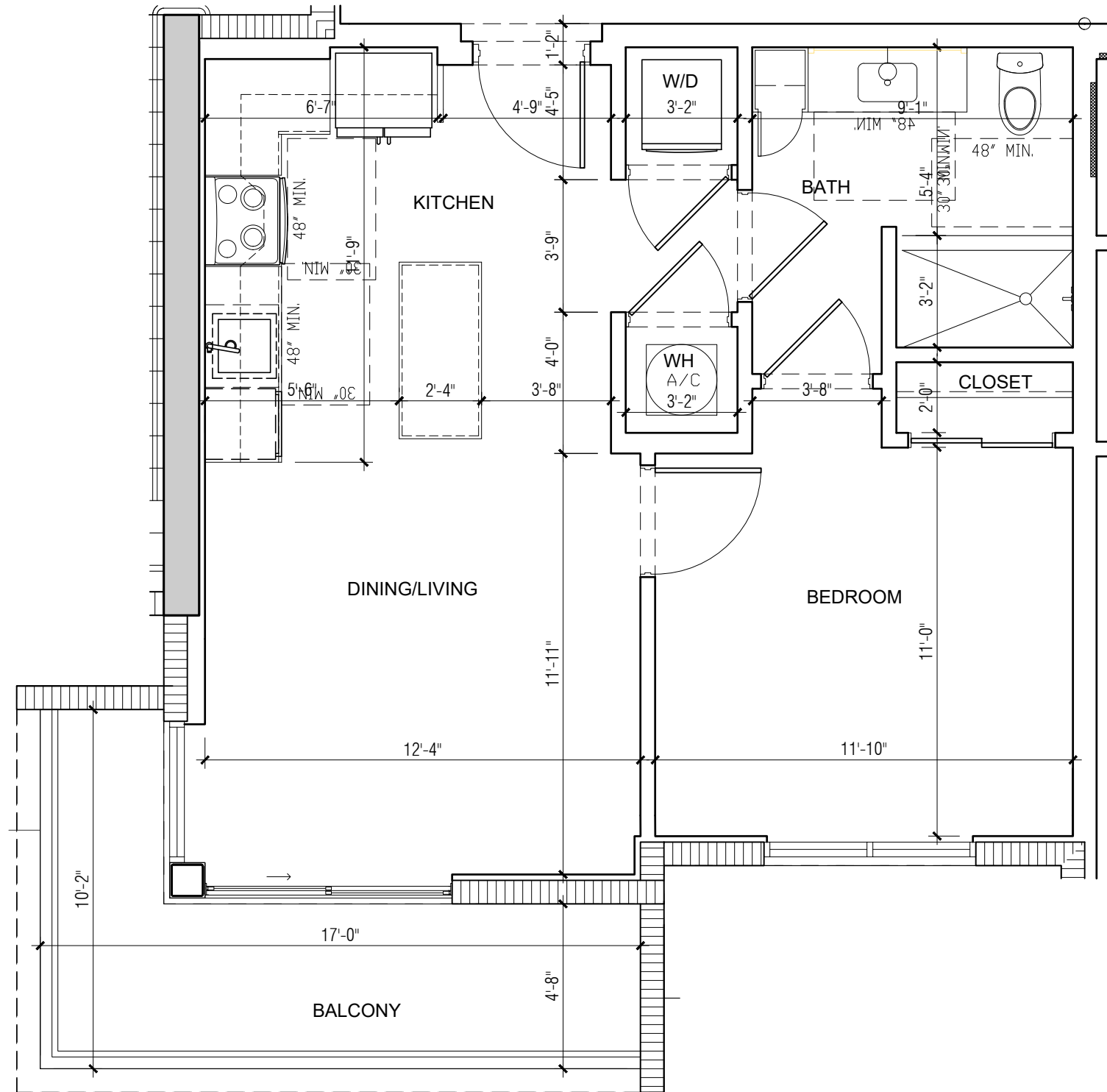
DRAWN BY:

CHECKED BY:

A-1B

BEHAR • FONT • & PARTNERS • P • A •

PRINTED ON:01.08.2024

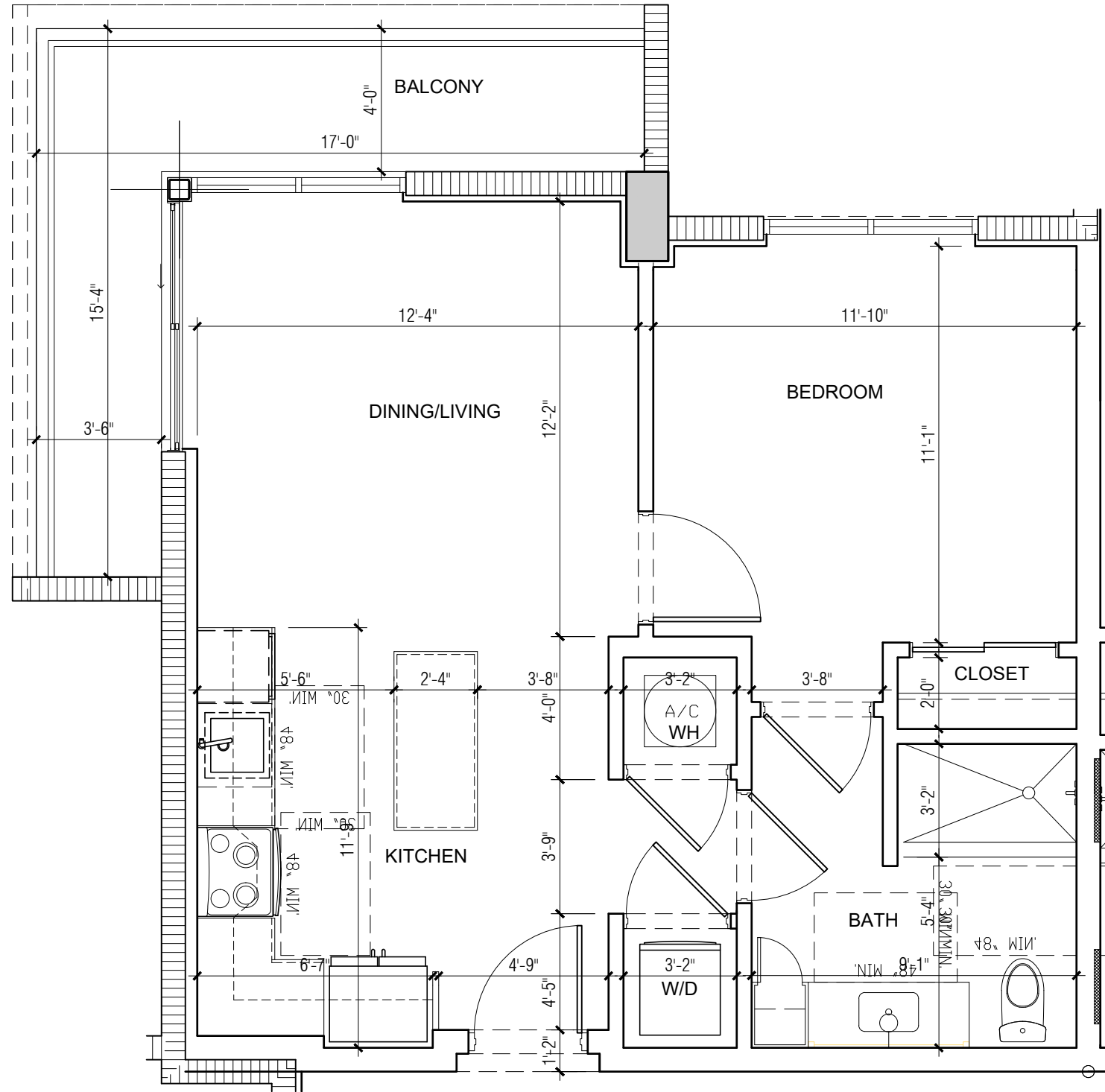


1

UNIT TYPE A1C UNIT NUMBER 618, 718 AND 818
 635 SF - 1BR/1BATH - (Balcony area 99 sf)

SCALE: 1/4" = 1'-0"

PRINTED ON: 01.08.2024

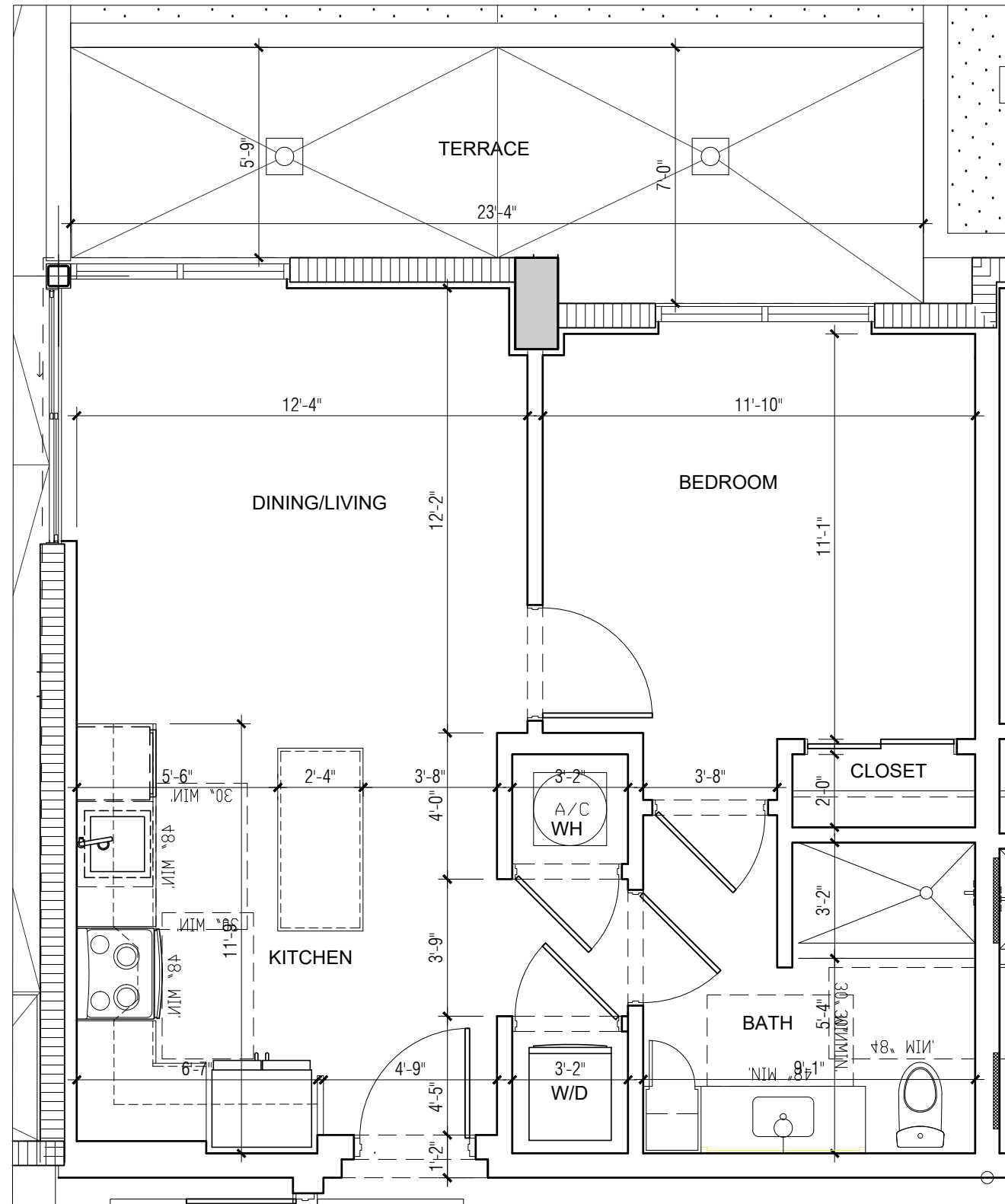


1

UNIT TYPE A1D UNIT NUMBER 719 AND 819
635 SF - 1BR/1BATH - (Balcony area 108 sf)

SCALE: 1/4" = 1'-0"

1\CAD FILES\2022\22-023 1428 NW 14 AVE\DWG\CURRENTSHEETS\UNITS 11X17 (12.19.23)\A-1E.DWG
 FILE LOCATION:
 PRINTED ON: 01.08.2024



1

UNIT TYPE A1E UNIT NUMBER 619
 635 SF - 1BR/1BATH - (Balcony area 148 sf)

SCALE: 1/4" = 1'-0"

ARCHITECT
 PLANNING
 INTERIORS
 CERTIFICATION No. 12345
 4533 PONCE DE LEON BLVD
 CORAL GABLES, FL 33134
 TEL: (305) 777-1234
 FAX: (305) 777-5678
 E-MAIL: info@beha.com

©2023 BEHAR FORT & PARTNERS P.A.
 THE DESIGN AND DRAWING OF THIS PROJECT ARE THE PROPERTY OF BEHAR FORT & PARTNERS P.A.
 ARCHITECT AND ARE NOT TO BE REPRODUCED OR TRANSMITTED IN ANY FORM OR BY ANY MEANS
 WITHOUT THE WRITTEN PERMISSION OF BEHAR FORT & PARTNERS P.A.

SEAL:
 Robert Behar AIA
 CONSULTANT

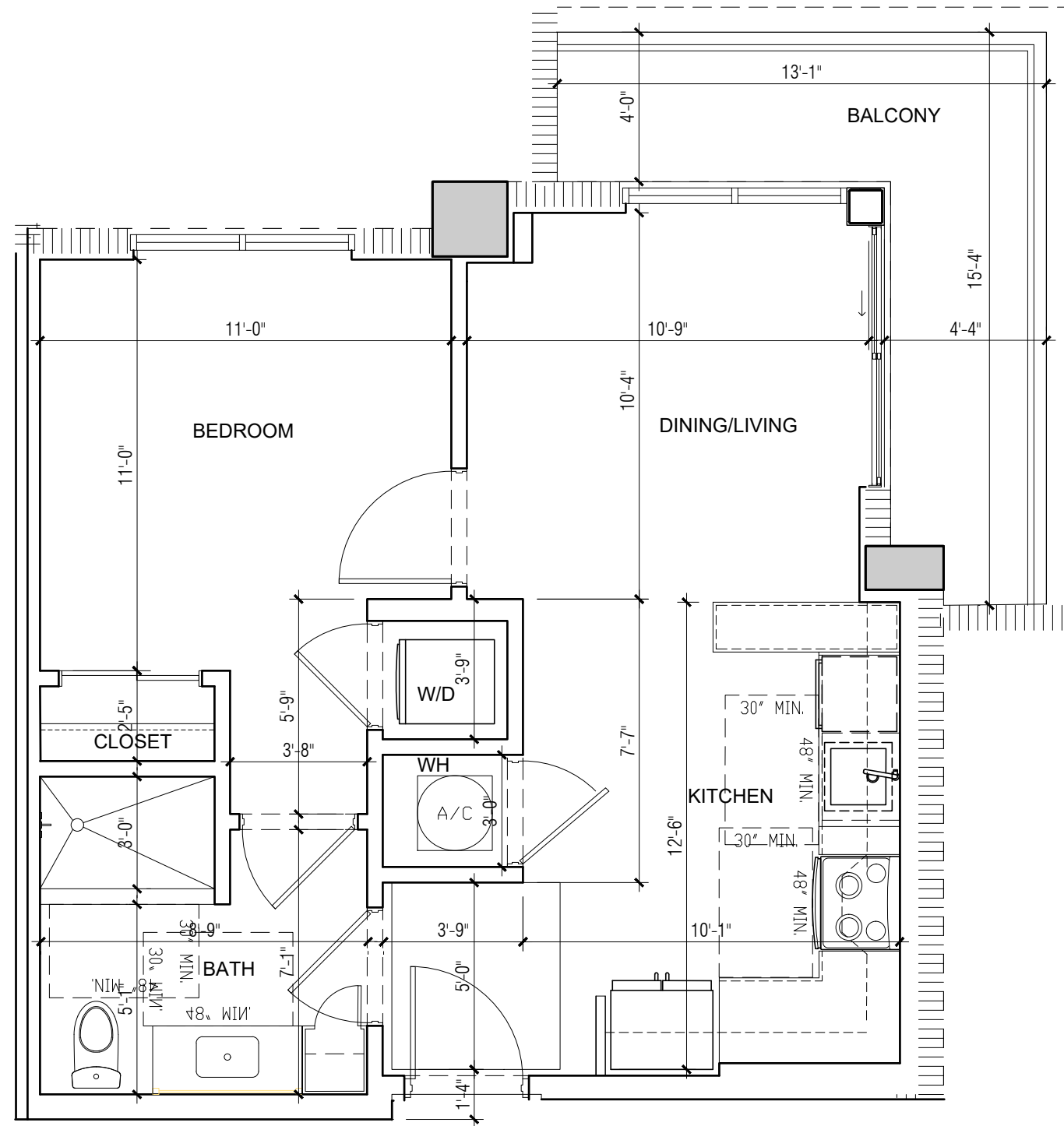
PROPOSED RESIDENTIAL DEVELOPMENT
 BEHAR FORT & PARTNERS P.A.

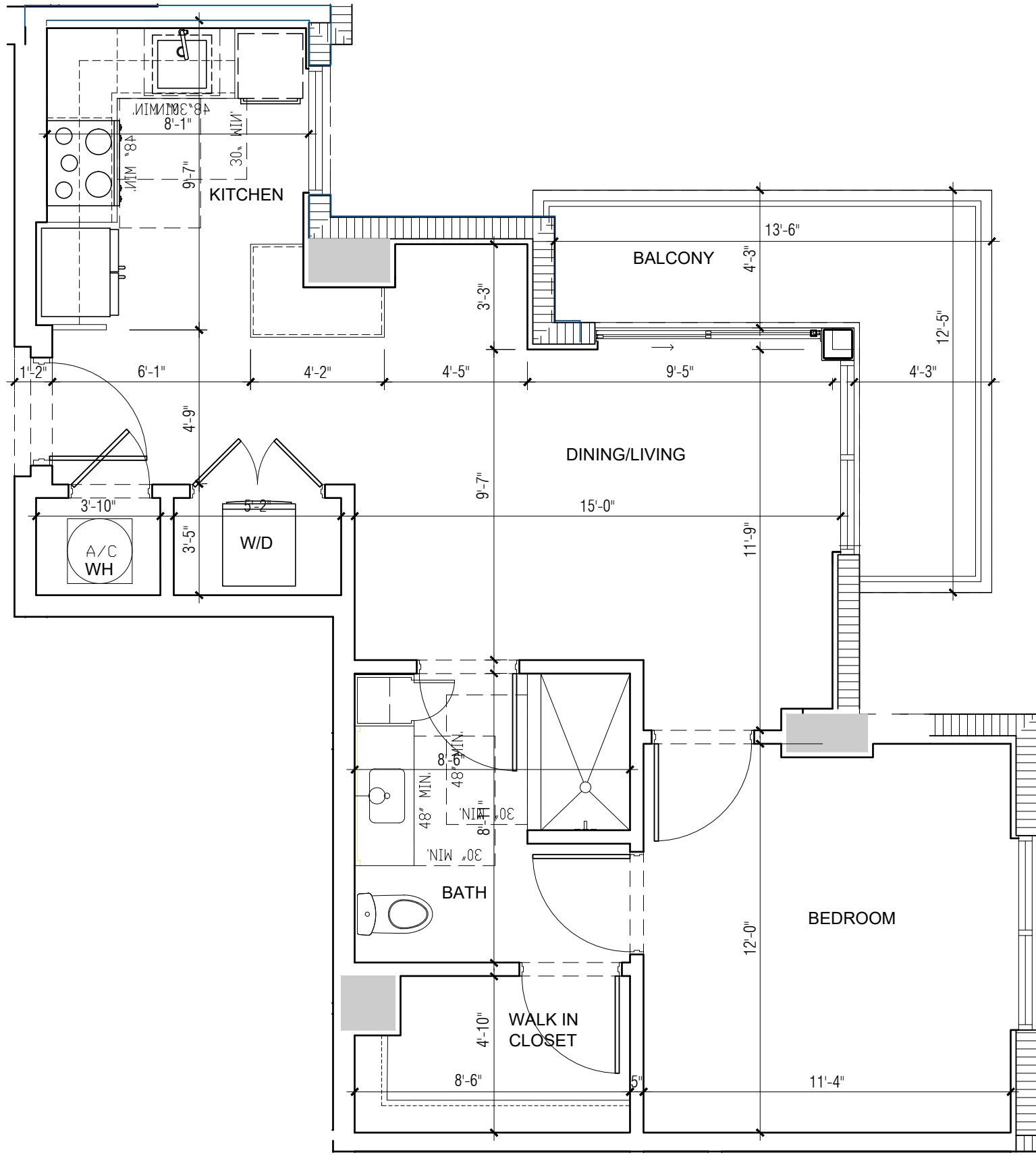
CLIENT INFORMATION:
 ALTA DEVELOPMENT

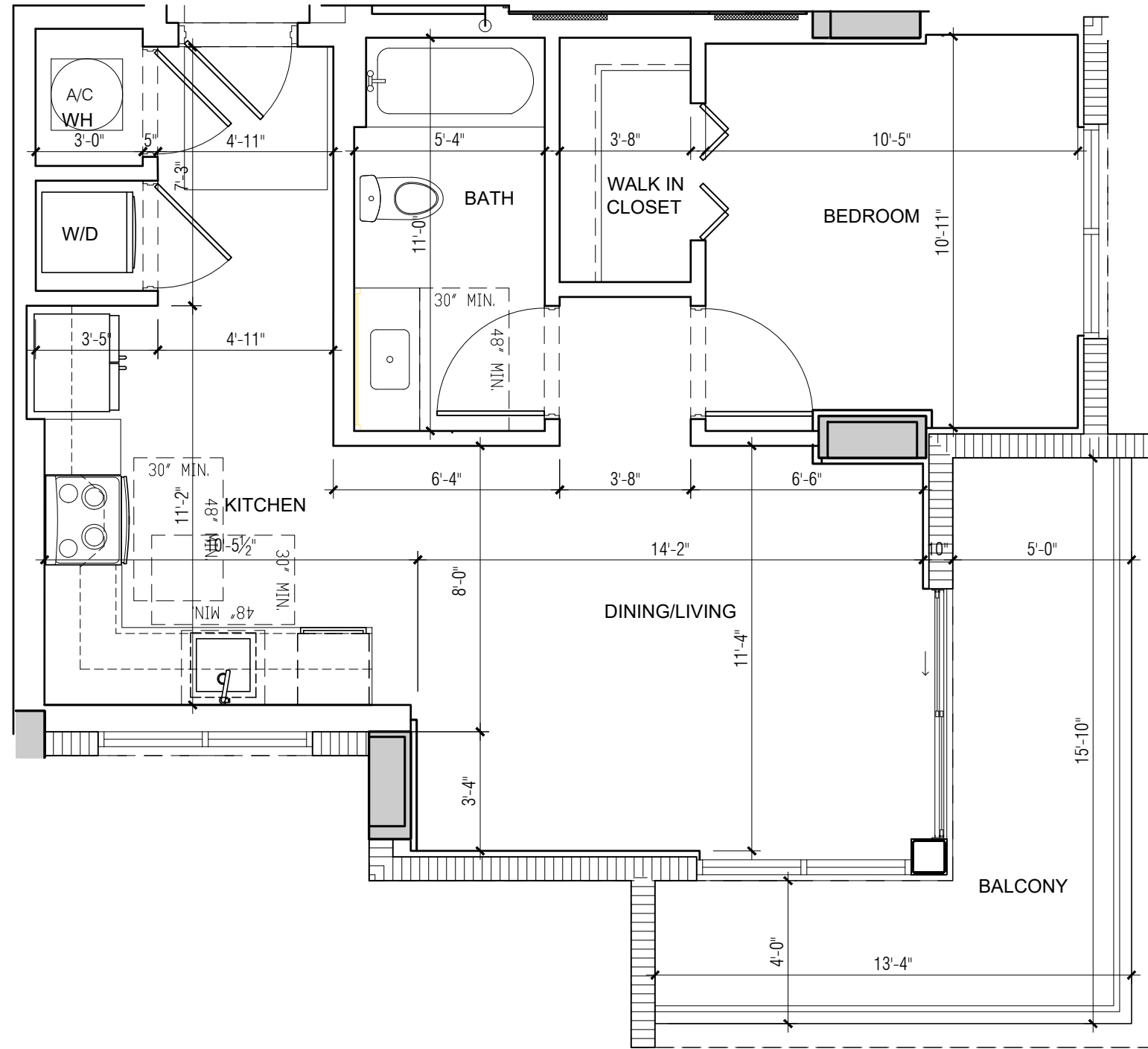
DATE: 00-00-23

PROJECT No. 12345
 DRAWN BY: J. SMITH
 CHECKED BY: R. BEHAR

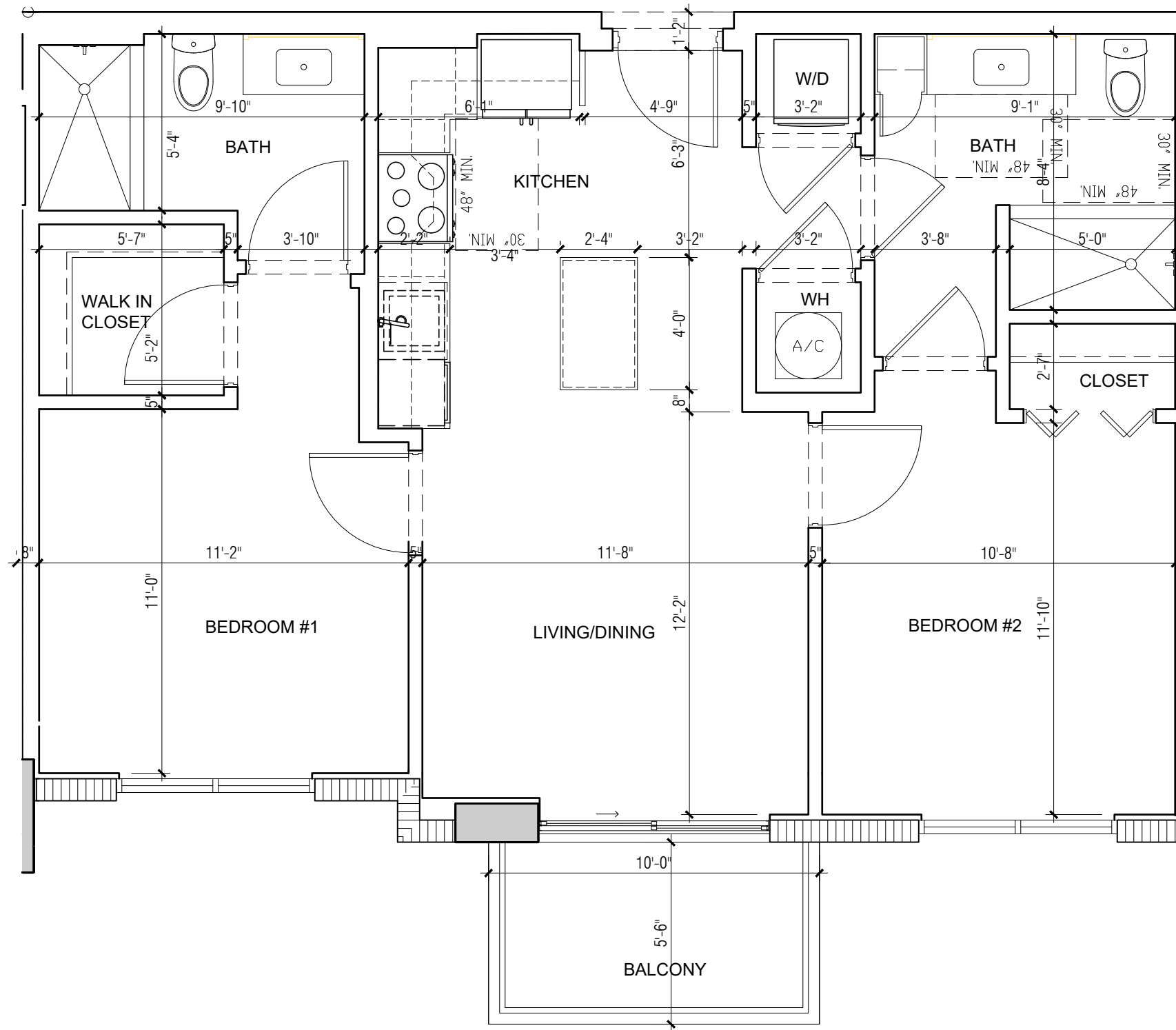
A-1E







FILE LOCATION: /ER-01\CAD FILES\2022\22-023 1428 NW 14 AVE\DWG\CURRENTSHEETS\UNITS 11X17 (12.19.23)\C-1.DWG
PRINTED ON: 01.09.2024



5

UNIT TYPE C-1 UNITS 1628 & 1728
865 SF - 2BR/2BATH (Balcony area 55 sf)

SCALE: 1/4" = 1'-0"

ARCHITECTURE
PLANNING
INTERIORS
CERTIFICATION No. AA002451
4533 PONCE DE LEON BLVD.
CORAL GABLES, FLORIDA 33146
TEL: (305) 740-5442
FAX: (305) 740-5443
E-MAIL: info@beharfont.com

©2023 BEHAR FONT & PARTNERS P.A.
THE DESIGN AND DRAWINGS FOR THIS
PROJECT ARE THE PROPERTY OF THIS
ARCHITECT AND ARE PROTECTED UNDER THE
COPYRIGHT PROTECTION ACT.

SEAL

Robert Behar AR 14339
CONSULTANT

PROPOSED RESIDENTIAL DEVELOPMENT

RIVER NORTH
1428 N.W. 14TH AVENUE
MIAMI, FLORIDA 33125

CLIENT INFORMATION:
ALTA DEVELOPER

DATE:
01-08-24

PROJECT No:
22-023

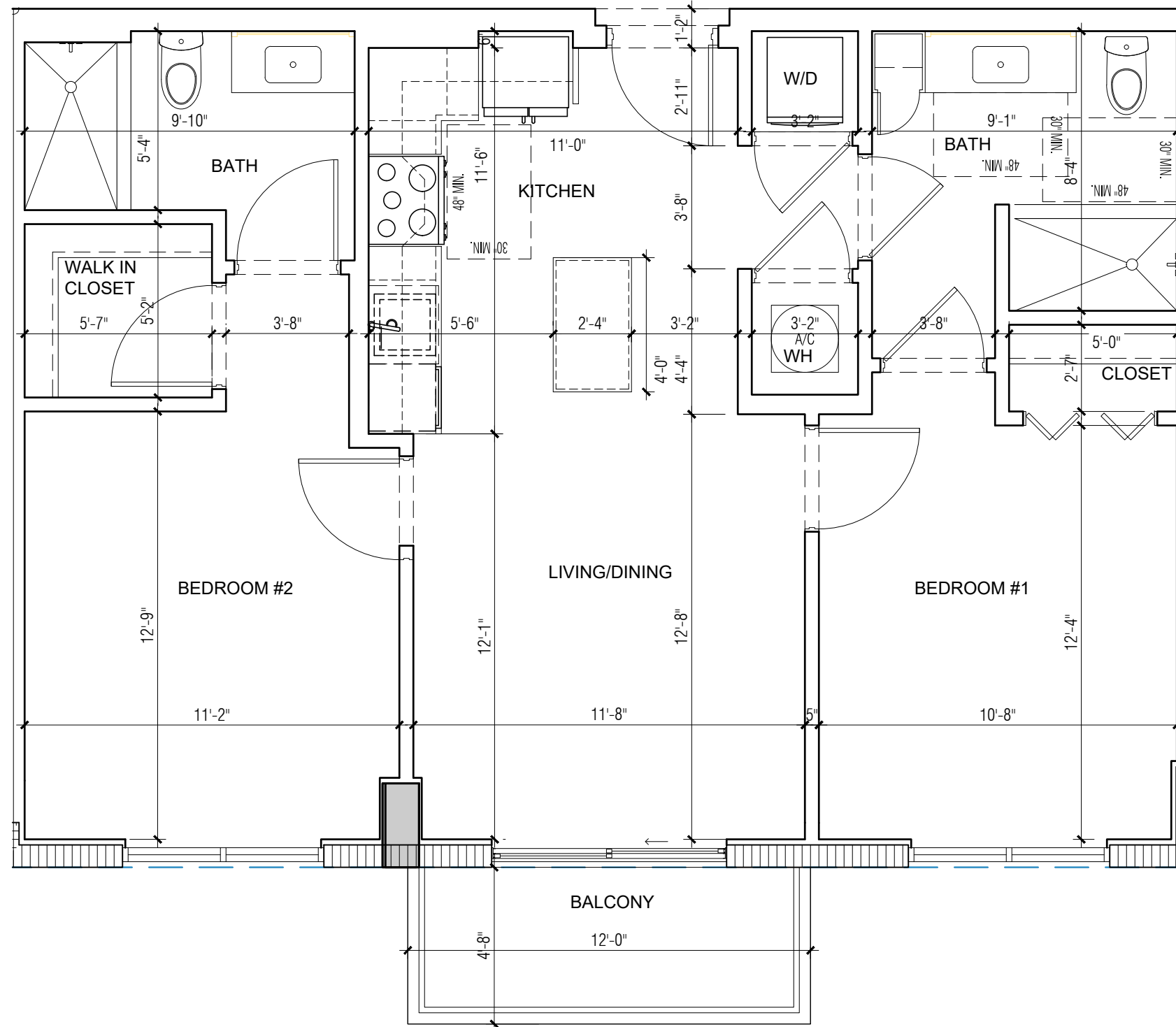
DRAWN BY:

CHECKED BY:

C-1

BEHAR • FONT & PARTNERS • P.A.

FILE LOCATION: :R-01\CAD FILES\2022\22-023 1428 NW 14 AVE\DWG\CURRENT\SHEETS\UNITS 11X17 (12.19.23)\C-1A.DWG
PRINTED ON: 01.10.2024



6

UNIT TYPE C-1A : UNITS 212, 312, 412, 512, 612, 712, 812, 912, 1012, 1112, 1212, 1412, 1512, 1612, 1712.
875 SF - 2BR/2BATH (Balcony area 56 sf)

SCALE: 1/4" = 1'-0"

ARCHITECTURE
PLANNING
INTERIORS
CERTIFICATION No. AA002451
4533 PONCE DE LEON BLVD.
CORAL GABLES, FLORIDA 33146
TEL: (305) 740-5442
FAX: (305) 740-5443
E-MAIL: info@beharfont.com

©2023 BEHAR FONT & PARTNERS P.A.
THE DESIGN AND DRAWINGS FOR THIS
PROJECT ARE THE PROPERTY OF THIS
OFFICE AND ARE PROTECTED UNDER THE
COPYRIGHT PROTECTION ACT.

SEAL

Robert Behar AR 14339
CONSULTANT

PROPOSED RESIDENTIAL DEVELOPMENT

RIVER NORTH
1428 N.W. 14TH AVENUE
MIAMI, FLORIDA 33125

CLIENT INFORMATION:
ALTA DEVELOPER

DATE: 00-00-23

PROJECT No: 22-023

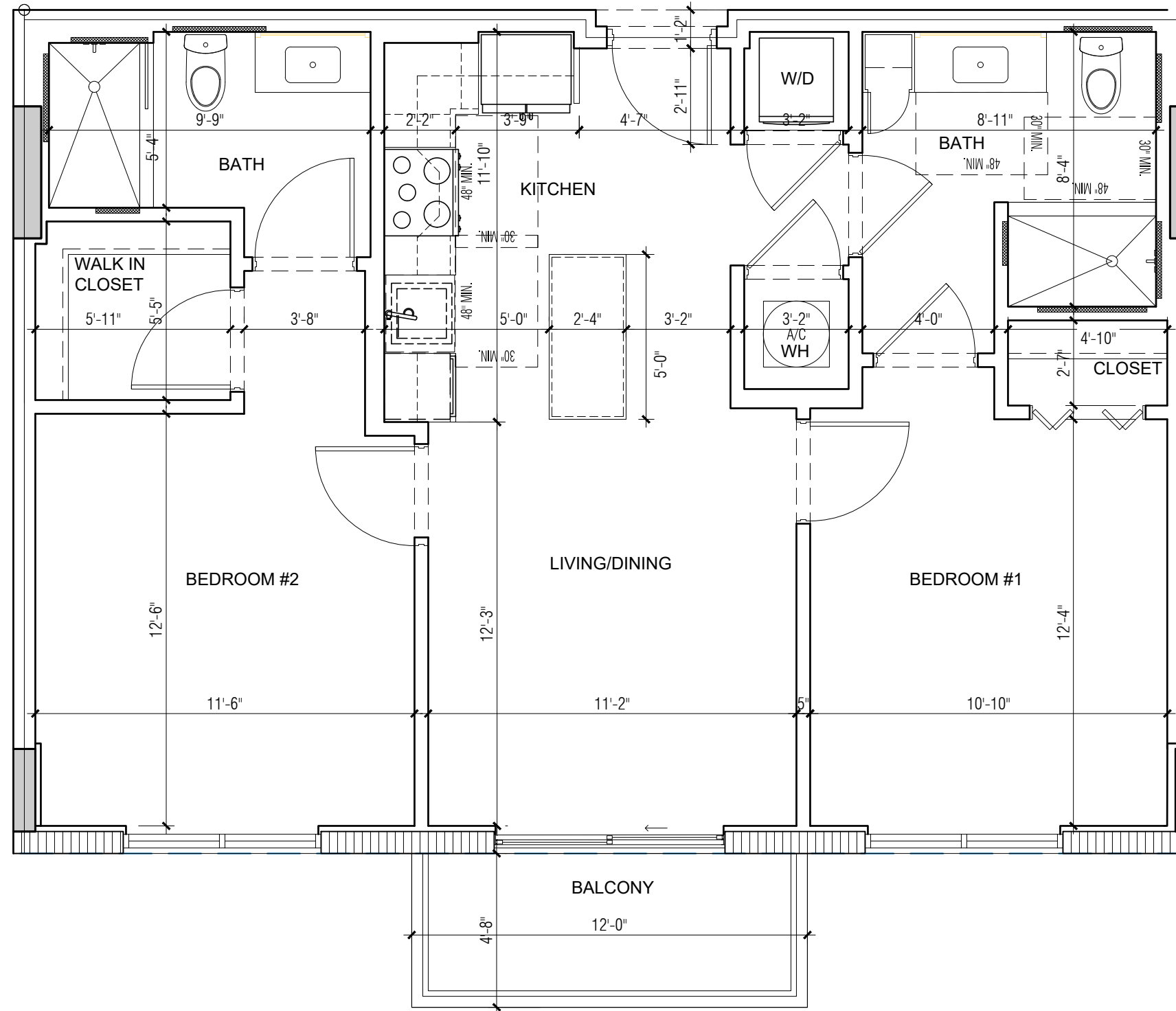
DRAWN BY:

CHECKED BY:

C-1A

BEHAR • FONT • & PARTNERS • P • A •

FILE LOCATION: \01\CAD FILES\2022\22-023 1428 NW 14 AVE\DWG\CURRENTS\CURRENTS\UNITS 11X17 (12.19.23)\C-1AB.DWG
 PRINTED ON: 01.10.2024



6

UNIT TYPE C-1AB : UNITS 614, 714, 814, 914, 1014, 1114, 1214, 1414, 1514, 1614 & 1714.
 875 SF - 2BR/2BATH (Balcony area 56 sf)

SCALE: 1/4" = 1'-0"

ARCHITECTURE
 PLANNING
 INTERIORS
 CERTIFICATION No. AA0002451
 4533 PONCE DE LEON BLVD.
 Coral Gables, Florida 33146
 TEL: (305) 740-5442
 FAX: (305) 740-5443
 E-MAIL: info@beharfont.com

©2023 BEHAR FONT & PARTNERS P.A.
 THE DESIGN AND DRAWINGS FOR THIS
 PROJECT ARE THE PROPERTY OF THIS
 FIRM AND ARE PROTECTED UNDER THE
 COPYRIGHT PROTECTION ACT.

SEAL

Robert Behar AR 14339
 CONSULTANT

PROPOSED RESIDENTIAL DEVELOPMENT

RIVER NORTH
 1428 N.W. 14TH AVENUE
 MIAMI, FLORIDA 33125

CLIENT INFORMATION:
 ALTA DEVELOPER

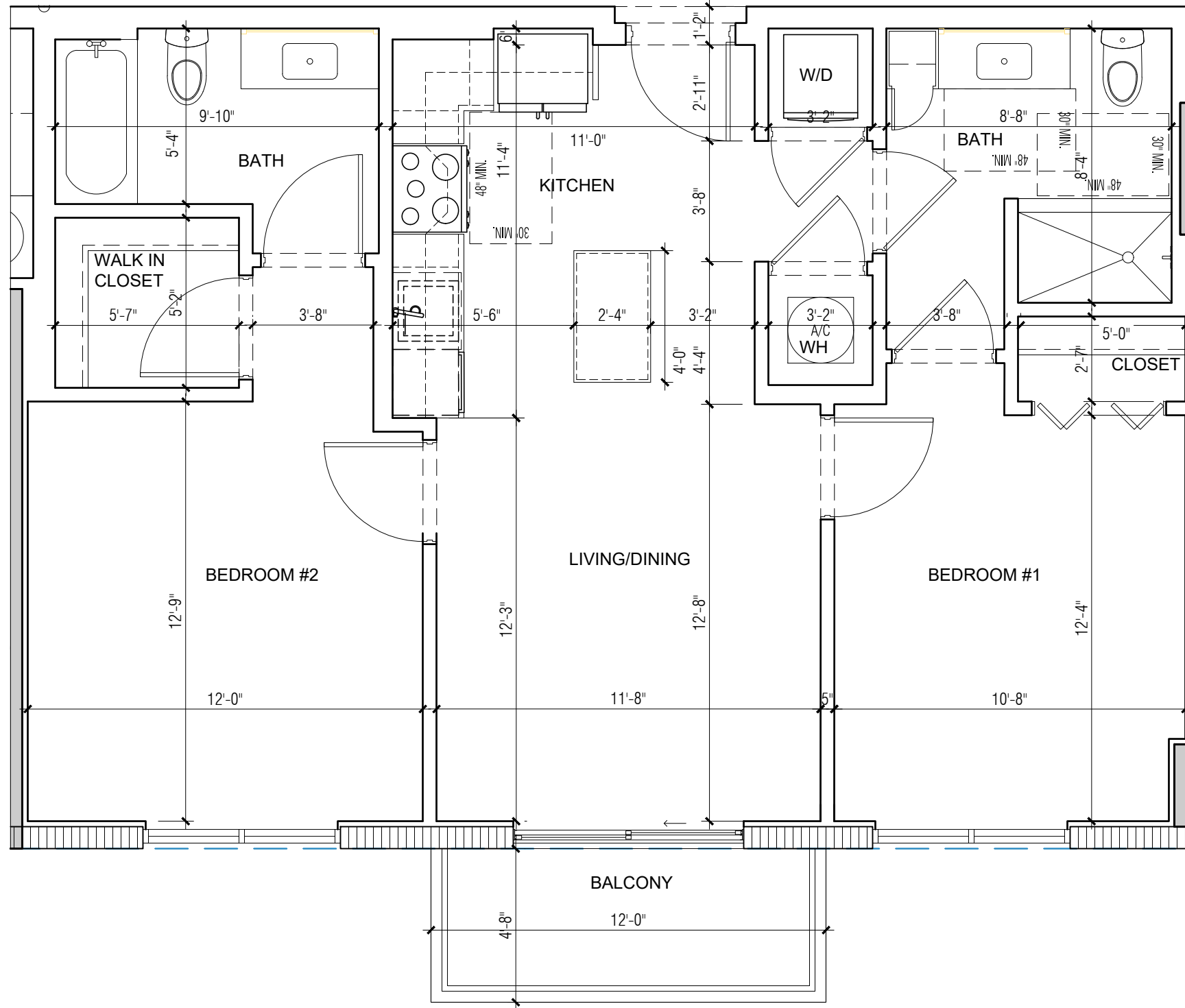
DATE: 00-00-23

PROJECT No: 22-023
 DRAWN BY:
 CHECKED BY:

C-1AB

BEHAR • FONT • & PARTNERS • P • A •

3-01\CAD FILES\2022\22-023 1428 NW 14 AVE\DWG\CURRENTSHEETS\UNITS 11X17 (12.19.23)\C-1AC.DWG
FILE LOCATION:
PRINTED ON: 01.10.2024



6

UNIT TYPE C-1AC: UNITS 915, 1015, 1115, 1215, 1415, 1515, 1615, 1715.
875 SF - 2BR/2BATH (Balcony area 56 sf)

SCALE: 1/4" = 1'-0"

ARCHITECTURE
PLANNING
INTERIORS
CERTIFICATION No. AA002451
4533 PONCE DE LEON BLVD.
CORAL GABLES, FLORIDA 33146
TEL: (305) 740-5442
FAX: (305) 740-5443
E-MAIL: info@beharfont.com

©2023 BEHAR FONT & PARTNERS P.A.
THE DESIGN AND DRAWINGS FOR THIS
PROJECT ARE THE PROPERTY OF THIS
OFFICE AND ARE PROTECTED UNDER THE
COPYRIGHT PROTECTION ACT.

SEAL:

Robert Behar AR 14339
CONSULTANT:

PROPOSED RESIDENTIAL DEVELOPMENT

RIVER NORTH
1428 N.W. 14TH AVENUE
MIAMI, FLORIDA 33125

CLIENT INFORMATION:
ALTA DEVELOPER

DATE: 00-00-23

PROJECT No: 22-023

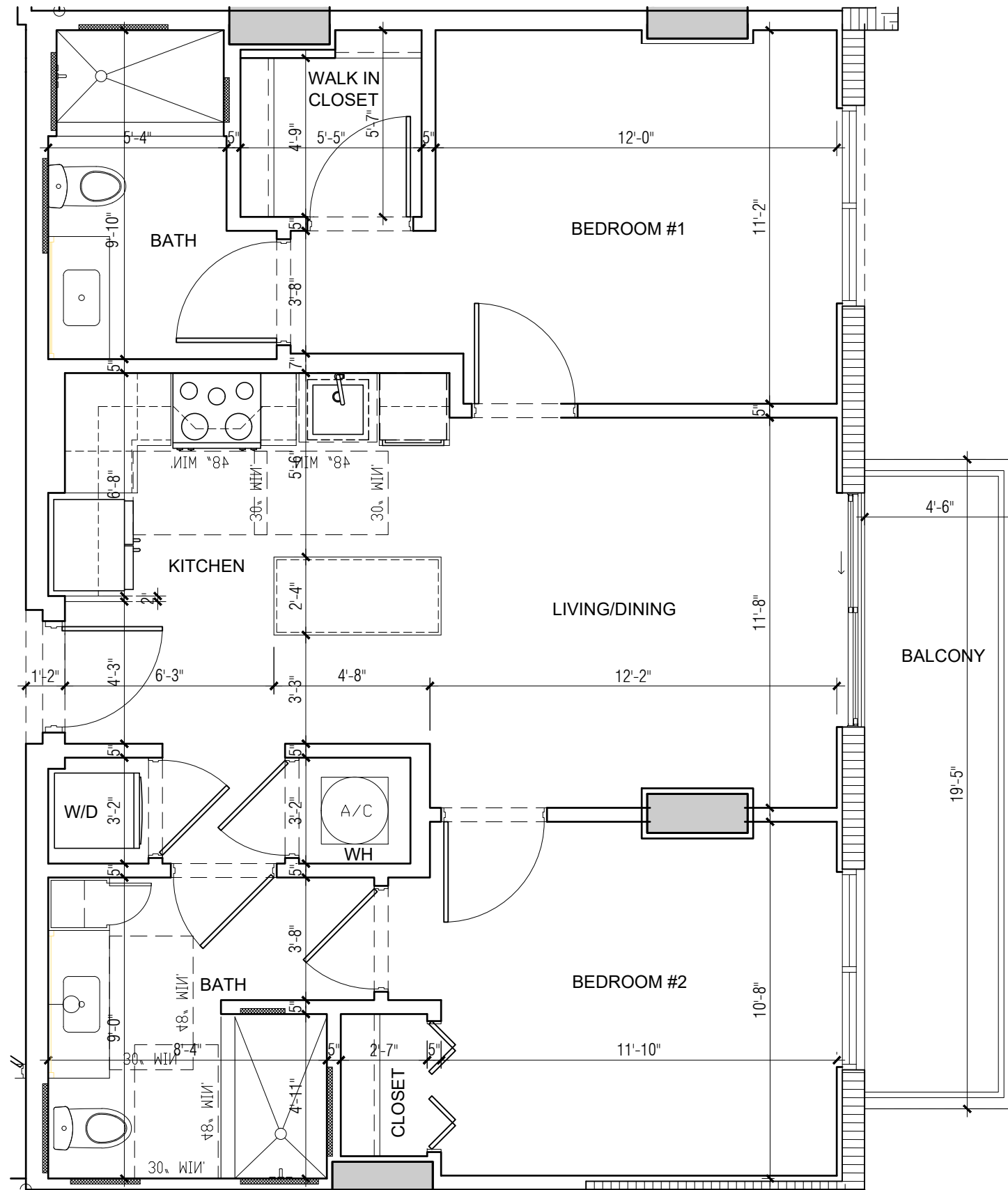
DRAWN BY:

CHECKED BY:

C-1AC

BEHAR • FONT • & PARTNERS • P • A •

FILE LOCATION: :R-01\CAD FILES\2022\22-023 1428 NW 14 AVE\DWG\CURRENT\SHEETS\UNITS 11X17 (12.19.23)\C-1B.DWG
 PRINTED ON: 01.09.2024



7

UNIT TYPE C-1B UNITS : 210, 310, 410, 510, 610, 710, 810
 880 SF - 2BR/2BATH (Balcony area 87 sf.)

SCALE: 1/4" = 1'-0"

ARCHITECTURE
 PLANNING
 INTERIORS
 CERTIFICATION No. AA002451
 4533 PONCE DE LEON BLVD.
 Coral Gables, Florida 33146
 TEL: (305) 740-5442
 FAX: (305) 740-5443
 E-MAIL: info@beharfont.com

©2023 BEHAR FONT & PARTNERS P.A.
 THE DESIGN AND DRAWINGS FOR THIS
 PROJECT ARE THE PROPERTY OF THIS
 FIRM AND ARE PROTECTED UNDER THE
 COPYRIGHT PROTECTION ACT.

SEAL

Robert Behar AR 14339
 CONSULTANT:

PROPOSED RESIDENTIAL DEVELOPMENT

RIVER NORTH
 1428 N.W. 14TH AVENUE
 MIAMI, FLORIDA 33125

CLIENT INFORMATION:
 ALTA DEVELOPER

DATE: 00-00-23

PROJECT No: 22-023

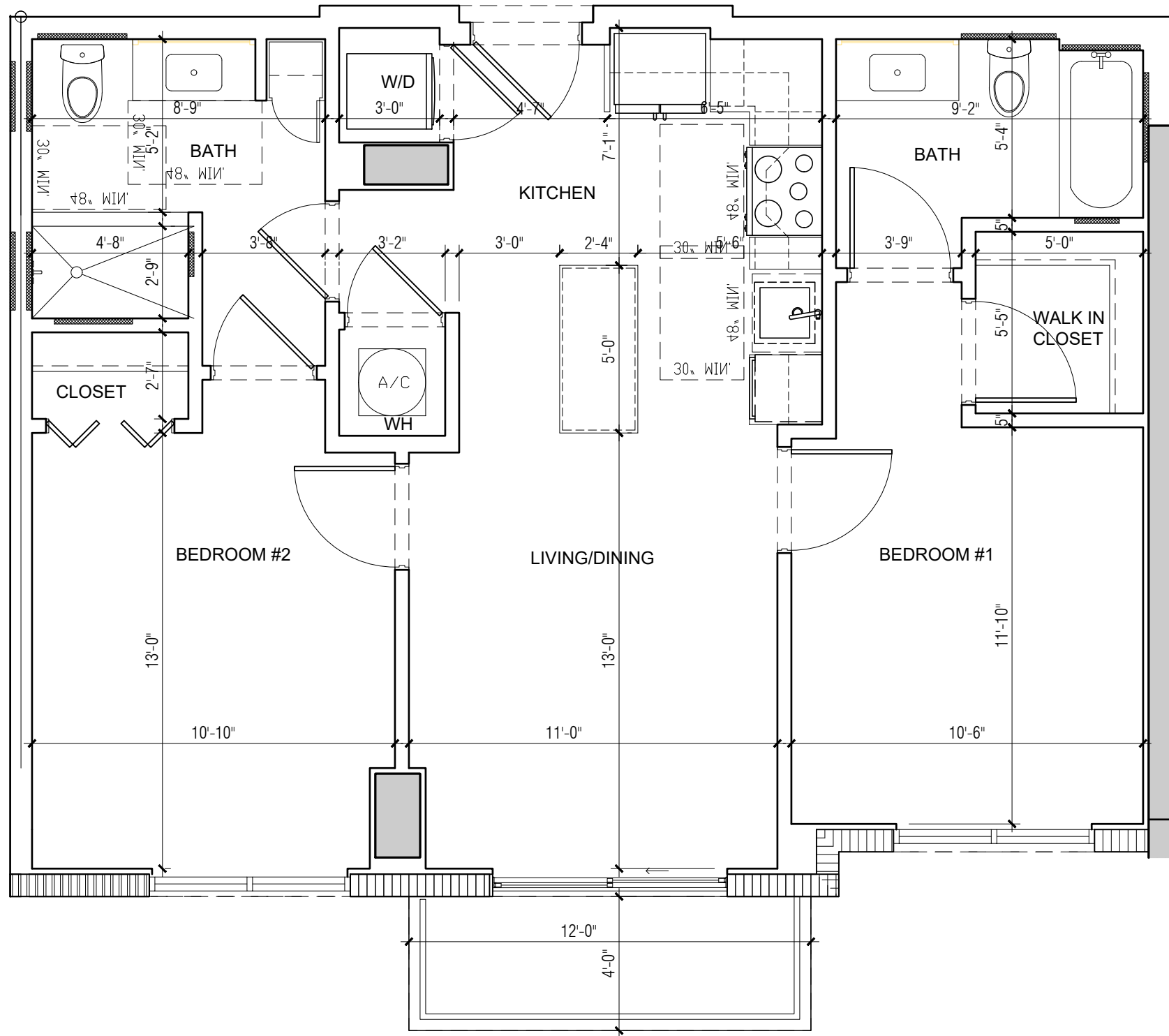
DRAWN BY:

CHECKED BY:

C-1B

BEHAR • FONT • & PARTNERS • P • A •

FILE LOCATION: :R-01\CAD FILES\2022\22-023 1428 NW 14 AVE\DWG\CURRENT\SHEETS\UNITS 11X17 (12.19.23)\C-1C.DWG
PRINTED ON: 01.09.2024



8

UNIT TYPE C-1C : UNITS 616, 716, 816
875 SF - 2BR/2BATH (Balcony area 48 sf)

SCALE: 1/4" = 1'-0"

ARCHITECTURE
PLANNING
INTERIORS
CERTIFICATION No. AA002451
4533 PONCE DE LEON BLVD.
CORAL GABLES, FLORIDA 33146
TEL: (305) 740-5442
FAX: (305) 740-5443
E-MAIL: info@beharfont.com

©2023 BEHAR FONT & PARTNERS P.A.
THE DESIGN AND DRAWINGS FOR THIS
PROJECT ARE THE PROPERTY OF THIS
OFFICE AND ARE PROTECTED UNDER THE
COPYRIGHT PROTECTION ACT.

SEAL

Robert Behar AR 14339
CONSULTANT

PROPOSED RESIDENTIAL DEVELOPMENT

RIVER NORTH
1428 N.W. 14TH AVENUE
MIAMI, FLORIDA 33125

CLIENT INFORMATION:
ALTA DEVELOPER

DATE: 00-00-23

PROJECT No: 22-023

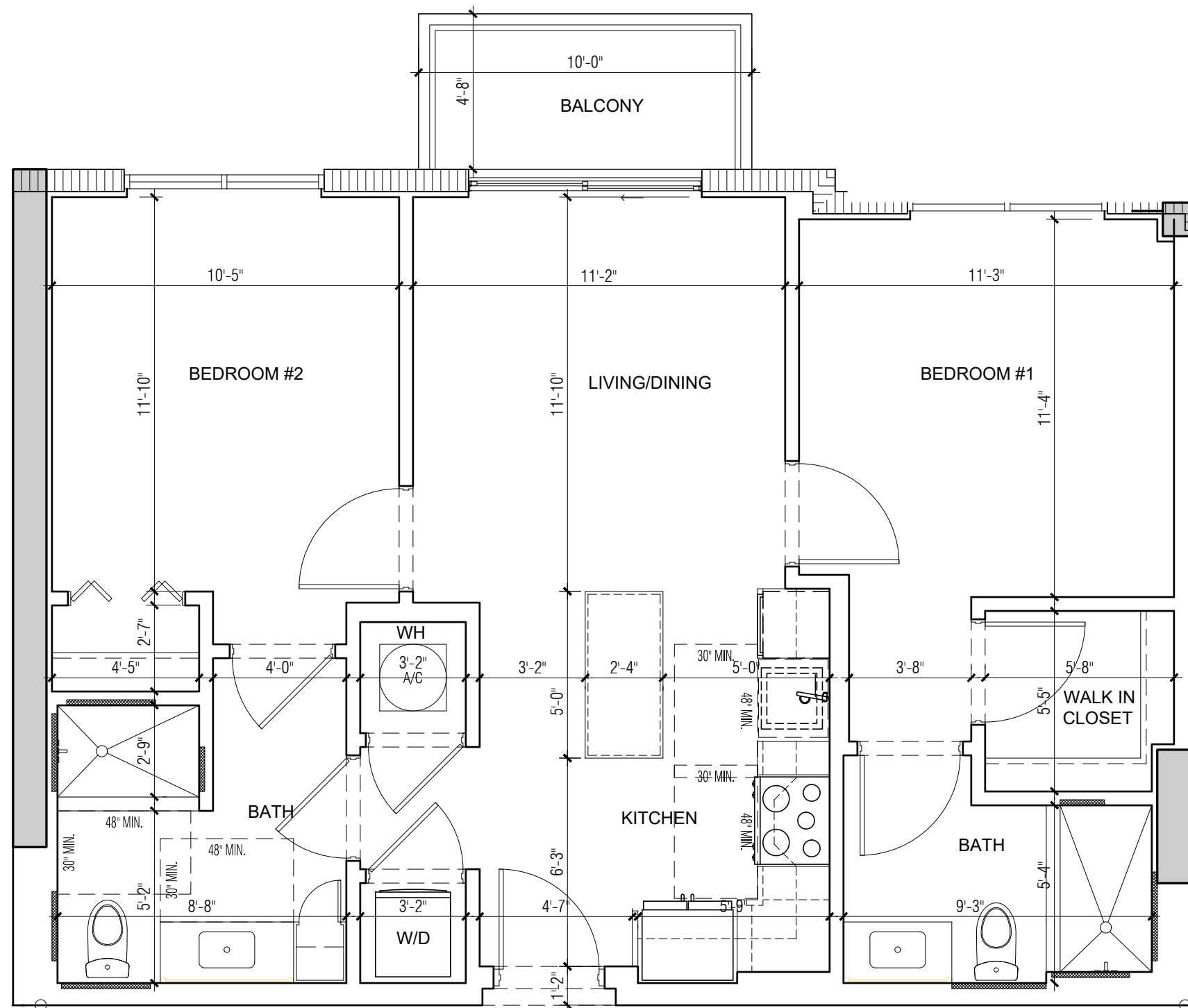
DRAWN BY:

CHECKED BY:

C-1C

BEHAR • FONT • & PARTNERS • P • A •

FILE LOCATION: :R-01\CAD FILES\2022\22-023 1428 NW 14 AVE\DWG\CURRENT\SHEETS\UNITS 11X17 (12.19.23)\C-1D.DWG
 PRINTED ON: 01.09.2024



9

UNIT TYPE C-1D : UNITS 603, 703, 803, 903, 1003, 1103, 1203, 1403, 1503, 1603 & 1703
 850 SF - 2BR/2BATH (Balcony area 47 sf)

SCALE: 1/4" = 1'-0"

ARCHITECTURE
 PLANNING
 INTERIORS
 CERTIFICATION No. AA002451
 4533 PONCE DE LEON BLVD.
 Coral Gables, Florida 33146
 TEL: (305) 740-5442
 FAX: (305) 740-5443
 E-MAIL: info@beharfont.com

©2023 BEHAR FONT & PARTNERS P.A.
 THE DESIGN AND DRAWINGS FOR THIS
 PROJECT ARE THE PROPERTY OF THIS
 FIRM AND ARE PROTECTED UNDER THE
 COPYRIGHT PROTECTION ACT.

SEAL:
 Robert Behar AR 14339
 CONSULTANT:

PROPOSED RESIDENTIAL DEVELOPMENT
RIVER NORTH
 1428 N.W. 14TH AVENUE
 MIAMI, FLORIDA 33125

CLIENT INFORMATION:
 ALTA DEVELOPER

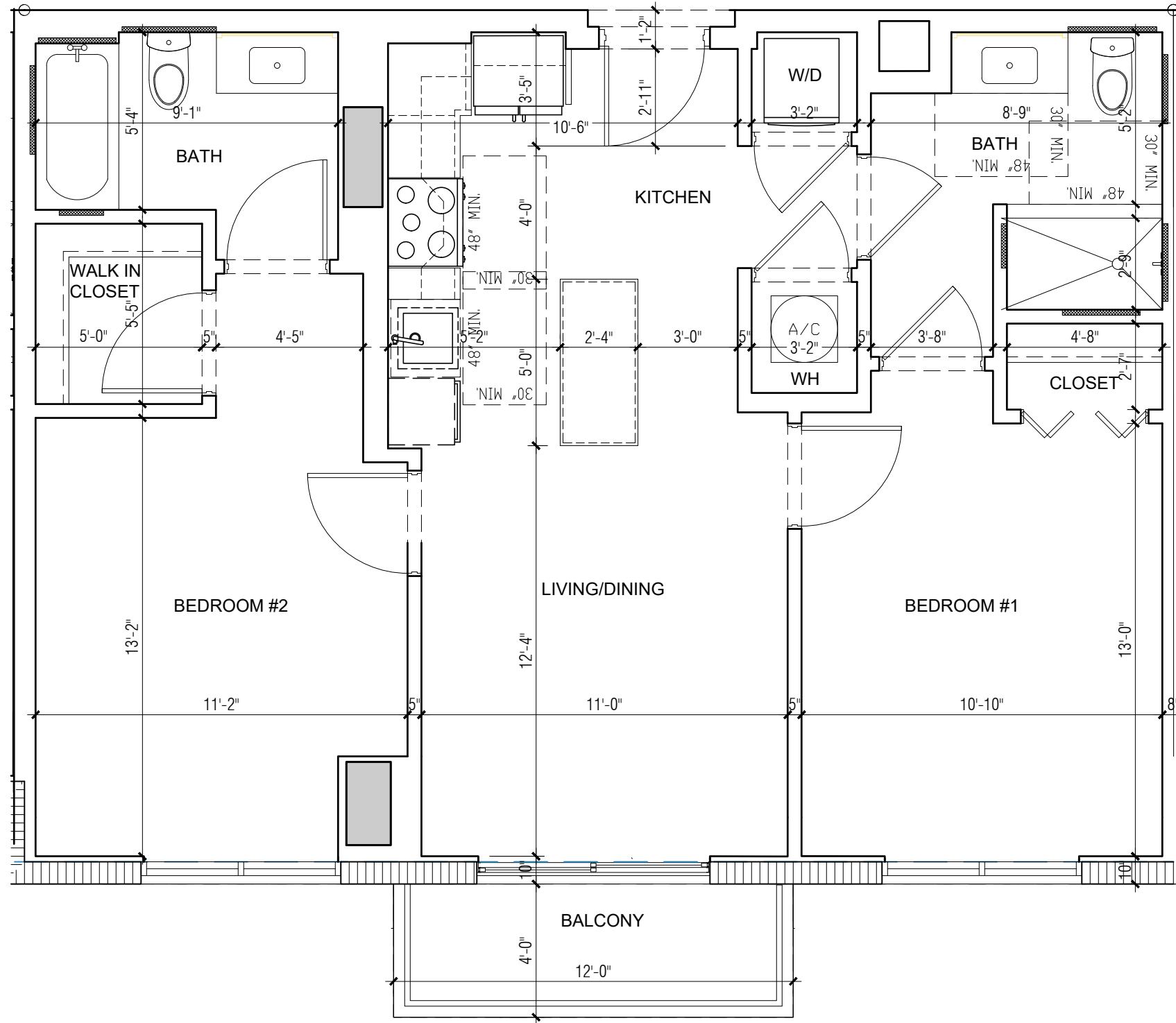
DATE: 00-00-23

PROJECT No: 22-023
 DRAWN BY:
 CHECKED BY:

C-1D

BEHAR • FONT • & PARTNERS • P • A •

FILE LOCATION: :R-01\CAD FILES\2022\22-023 1428 NW 14 AVE\DWG\CURRENT\SHEETS\UNITS 11X17 (12.19.23)\C-1E.DWG
 PRINTED ON: 01.09.2024



10

UNIT TYPE C-1E : UNITS 617, 717, 817
 880 SF - 2BR/2BATH (Balcony area 48 sf)

SCALE: 1/4" = 1'-0"

ARCHITECTURE
 PLANNING
 INTERIORS
 CERTIFICATION No. AA0002451
 4533 PONCE DE LEON BLVD.
 Coral Gables, Florida 33146
 TEL: (305) 740-5442
 FAX: (305) 740-5443
 E-MAIL: info@beharfont.com

©2023 BEHAR FONT & PARTNERS P.A.
 THE DESIGN AND DRAWINGS FOR THIS
 PROJECT ARE THE PROPERTY OF THIS
 ARCHITECT AND ARE PROTECTED UNDER THE
 COPYRIGHT PROTECTION ACT.

SEAL:

Robert Behar AR 14339
 CONSULTANT:

PROPOSED RESIDENTIAL DEVELOPMENT

RIVER NORTH
 1428 N.W. 14TH AVENUE
 MIAMI, FLORIDA 33125

CLIENT INFORMATION:
 ALTA DEVELOPER

DATE: 00-00-23

PROJECT No: 22-023

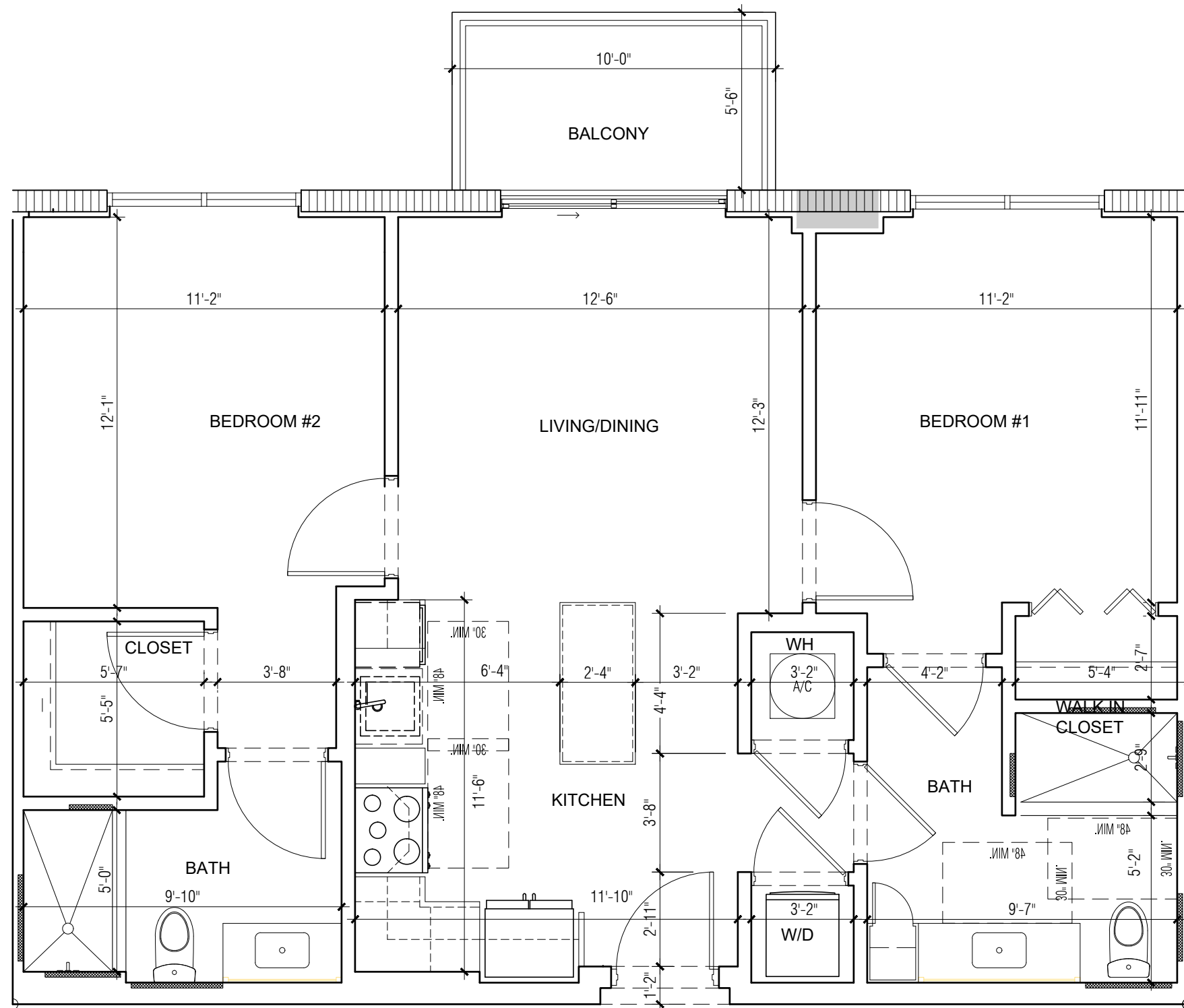
DRAWN BY:

CHECKED BY:

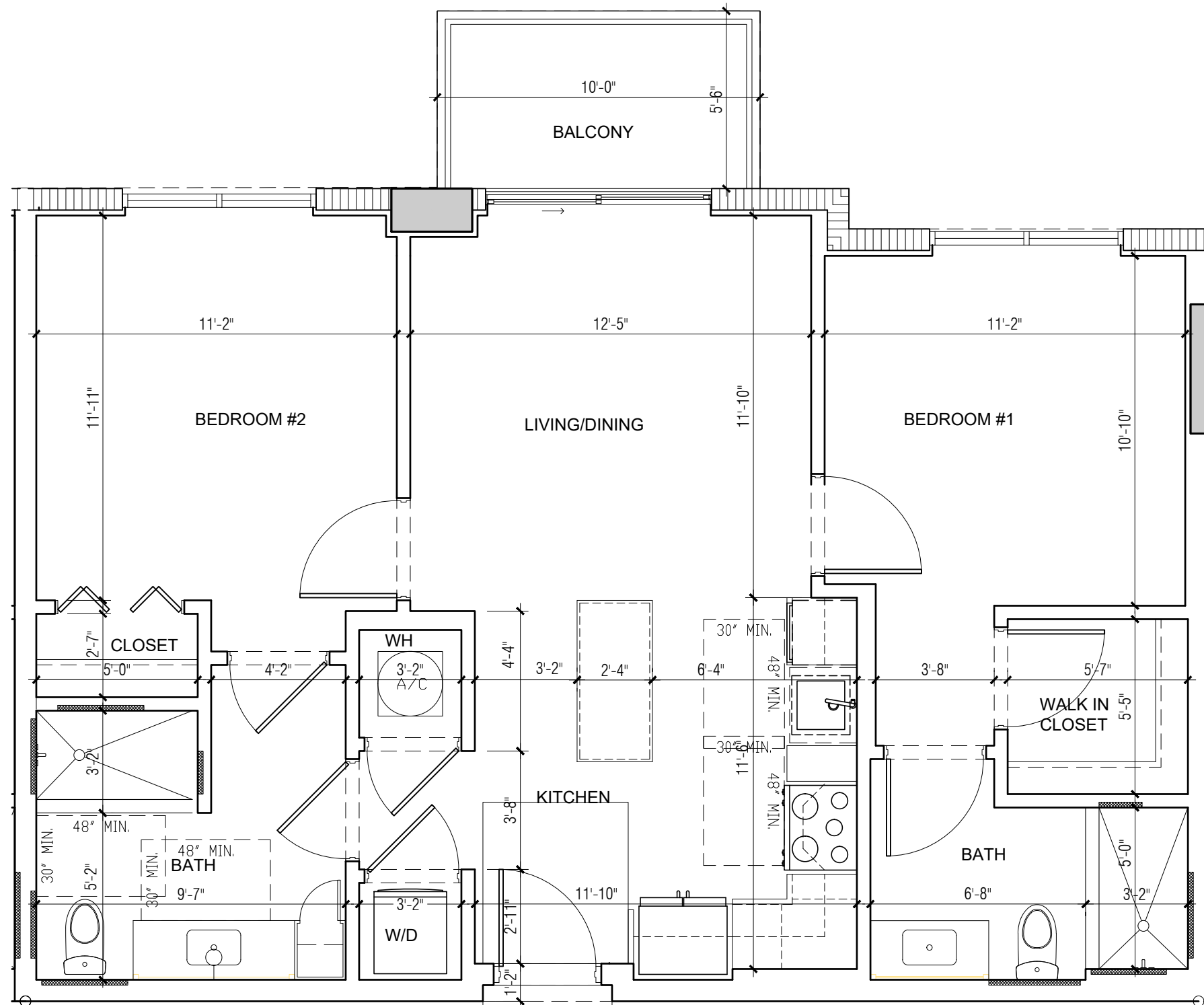
C-1E

BEHAR • FONT & PARTNERS • P.A.

FILE LOCATION: /ER-01/CAD FILES/2022/22-023 1428 NW 14 AVE/DWG/CURRENTSHEETS/UNITS 11X17 (12.19.23)/C-2.DWG
 PRINTED ON: 01.10.2024



FILE LOCATION: :R-01\CAD FILES\2022\22-023 1428 NW 14 AVE\DWG\CURRENT\SHEETS\UNITS 11X17 (12.19.23)\C-2A.DWG
 PRINTED ON: 01.09.2024



13

UNIT TYPE C-2A : UNITS 721 & 821
 915 SF - 2BR/2BATH (Balcony area 55 sf.)

SCALE: 1/4" = 1'-0"

ARCHITECTURE
 PLANNING
 INTERIORS
 CERTIFICATION No. AA002451
 4533 PONCE DE LEON BLVD.
 Coral Gables, Florida 33146
 TEL: (305) 740-5442
 FAX: (305) 740-5443
 E-MAIL: info@beharfont.com

©2023 BEHAR FONT & PARTNERS P.A.
 THE DESIGN AND DRAWINGS FOR THIS
 PROJECT ARE THE PROPERTY OF THIS
 ARCHITECT AND ARE PROTECTED UNDER THE
 COPYRIGHT PROTECTION ACT.

SEAL

Robert Behar AR 14339
 CONSULTANT

PROPOSED RESIDENTIAL DEVELOPMENT
RIVER NORTH
 1428 N.W. 14TH AVENUE
 MIAMI, FLORIDA 33125

CLIENT INFORMATION:
 ALTA DEVELOPER

DATE:

PROJECT No: 22-023

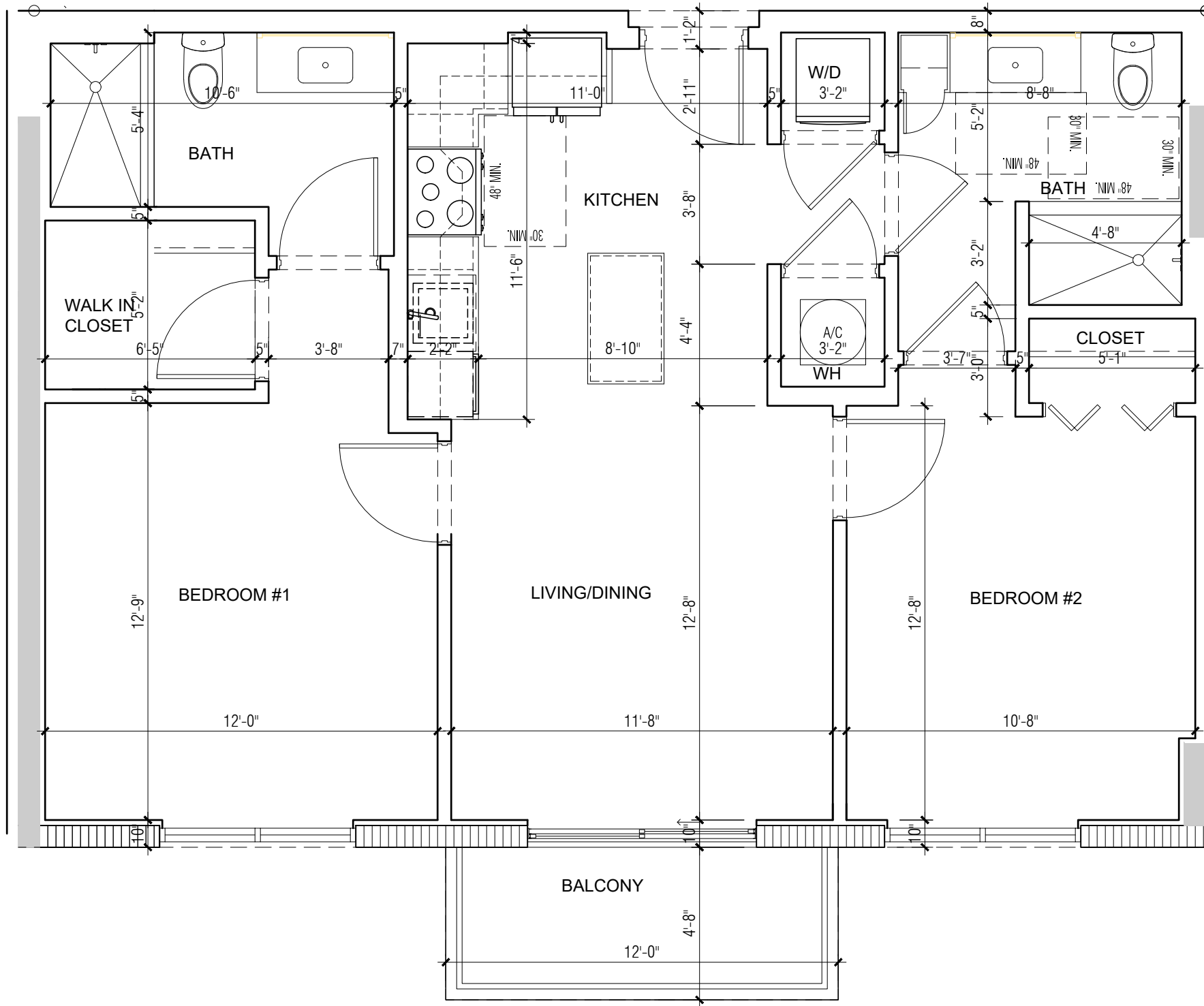
DRAWN BY:

CHECKED BY:

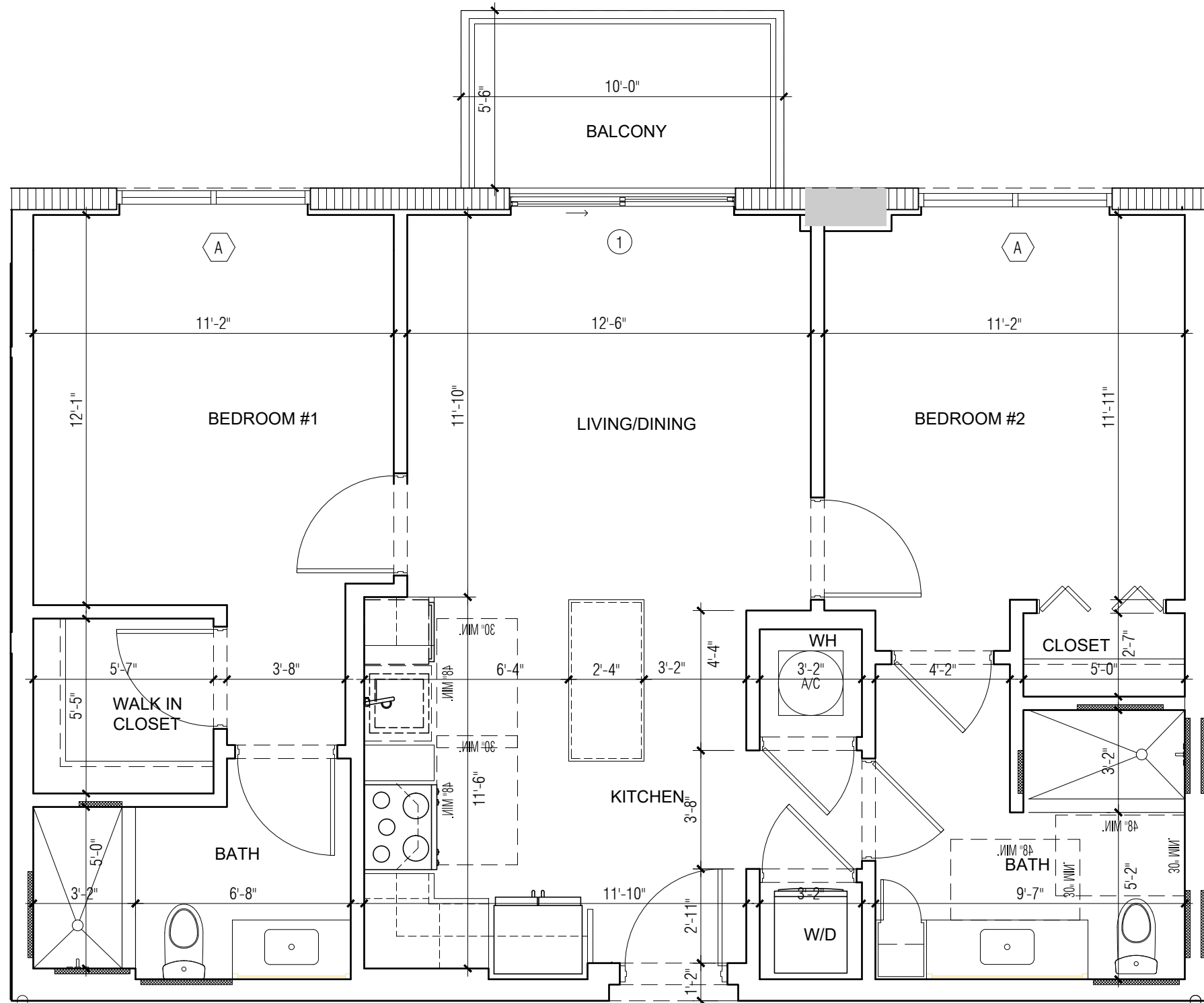
C-2A

BEHAR • FONT • & PARTNERS • P • A •

FILE LOCATION: :R-01\CAD FILES\2022\22-023 1428 NW 14 AVE\DWG\CURRENT\SHEETS\UNITS 11X17 (12.19.23)\C-2B.DWG
 PRINTED ON: 01.12.2024



FILE LOCATION: :R-01\CAD FILES\2022\22-023 1428 NW 14 AVE\DWG\CURRENT\SHEETS\UNITS 11X17 (12.19.23)\C-2C.DWG
 PRINTED ON: 01.09.2024

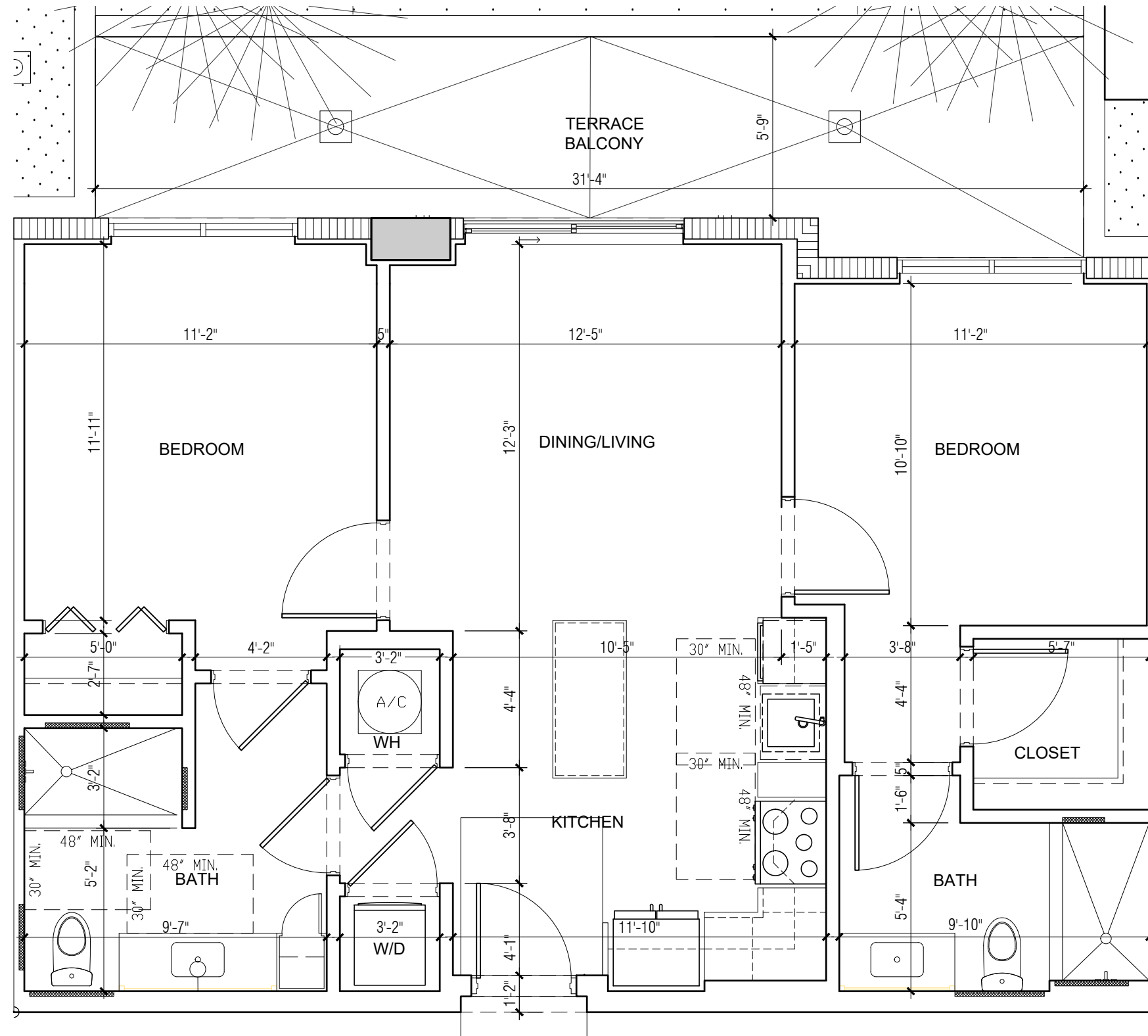


13

UNIT TYPE C-2C : UNITS 722 & 822
 915 SF - 2BR/2BATH (Balcony area 55 sf.)

SCALE: 1/4" = 1'-0"

FILE LOCATION: I:\CAD FILES\2022\22-023 1428 NW 14 AVE\DWG\CURRENTSHEETS\UNITS 11X17 (12.19.23)\C-2D.DWG
PRINTED ON: 01.09.2024



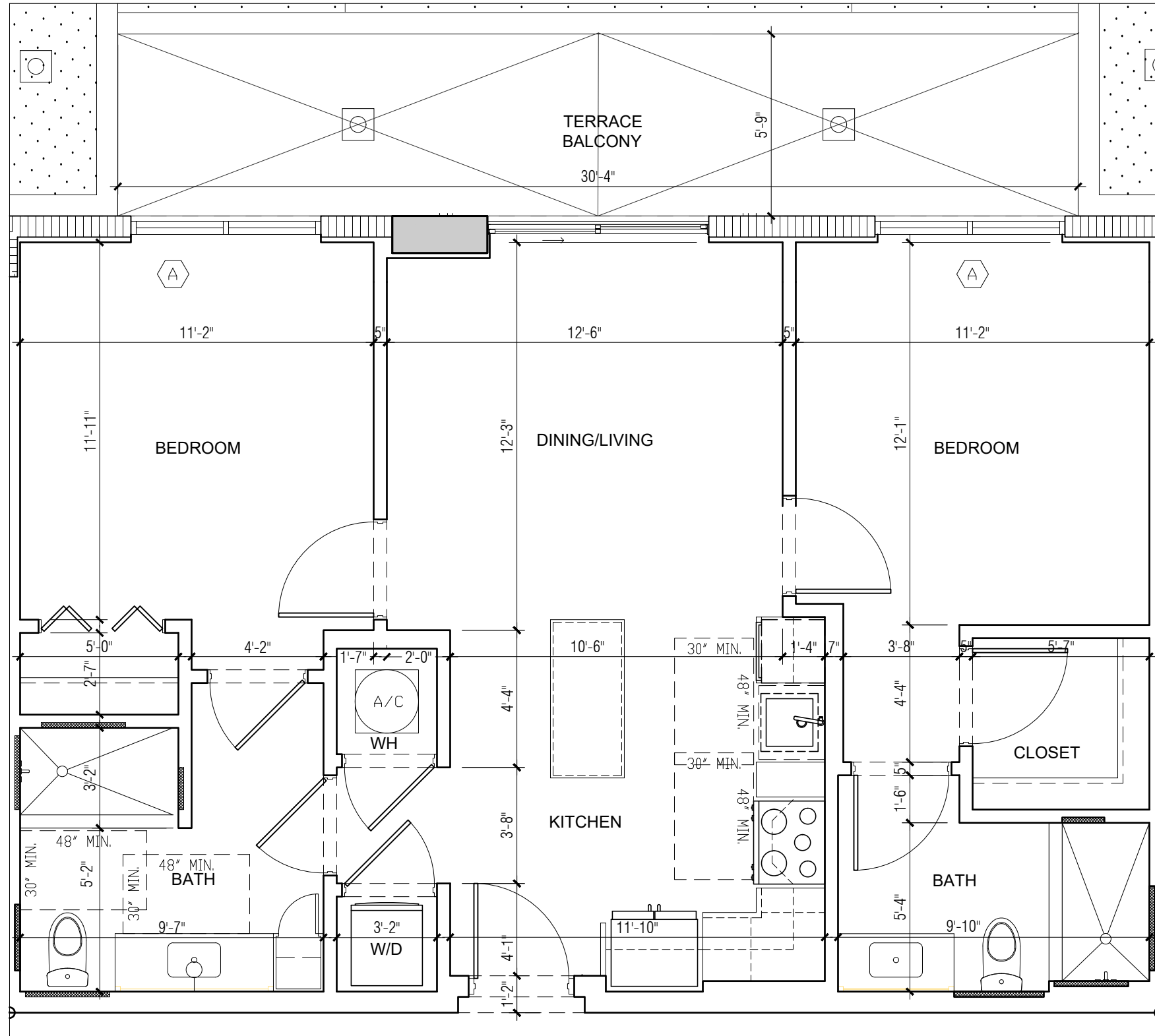
1

UNIT TYPE C-2D UNIT NUMBER 621
915 SF - 2BR/2BATH - (Balcony area 190 sf)

SCALE: 1/4" = 1'-0"

ARCHITECT
PLANNING
INTERIOR
CERTIFICATION No.
4533 PONCE DE LEON
CORAL GABLES, FL
TEL: (305) 7
FAX: (305) 7
E-MAIL: info@be
©2023 BEHAR FORT & PARTNERS
THE DESIGN AND DRAWING
PROJECT ARE THE PROPERTY
ARCHITECT AND ARE NOT
COPYRIGHT PROTECTED
SEAL:
Robert Behar A
CONSULTANT:
PROPOSED RESIDENTIAL DEVELOPMENT
DATE: 00-00-23
CLIENT INFORMATION:
ALTA DEVELOPMENT
PROJECT No.
DRAWN BY:
CHECKED BY:
C-2D

FILE LOCATION: I:\CAD FILES\2022\22-023 1428 NW 14 AVE\DWG\CURRENT\SHEETS\UNITS 11X17 (12.19.23)\C-2E.DWG
 PRINTED ON: 01.09.2024



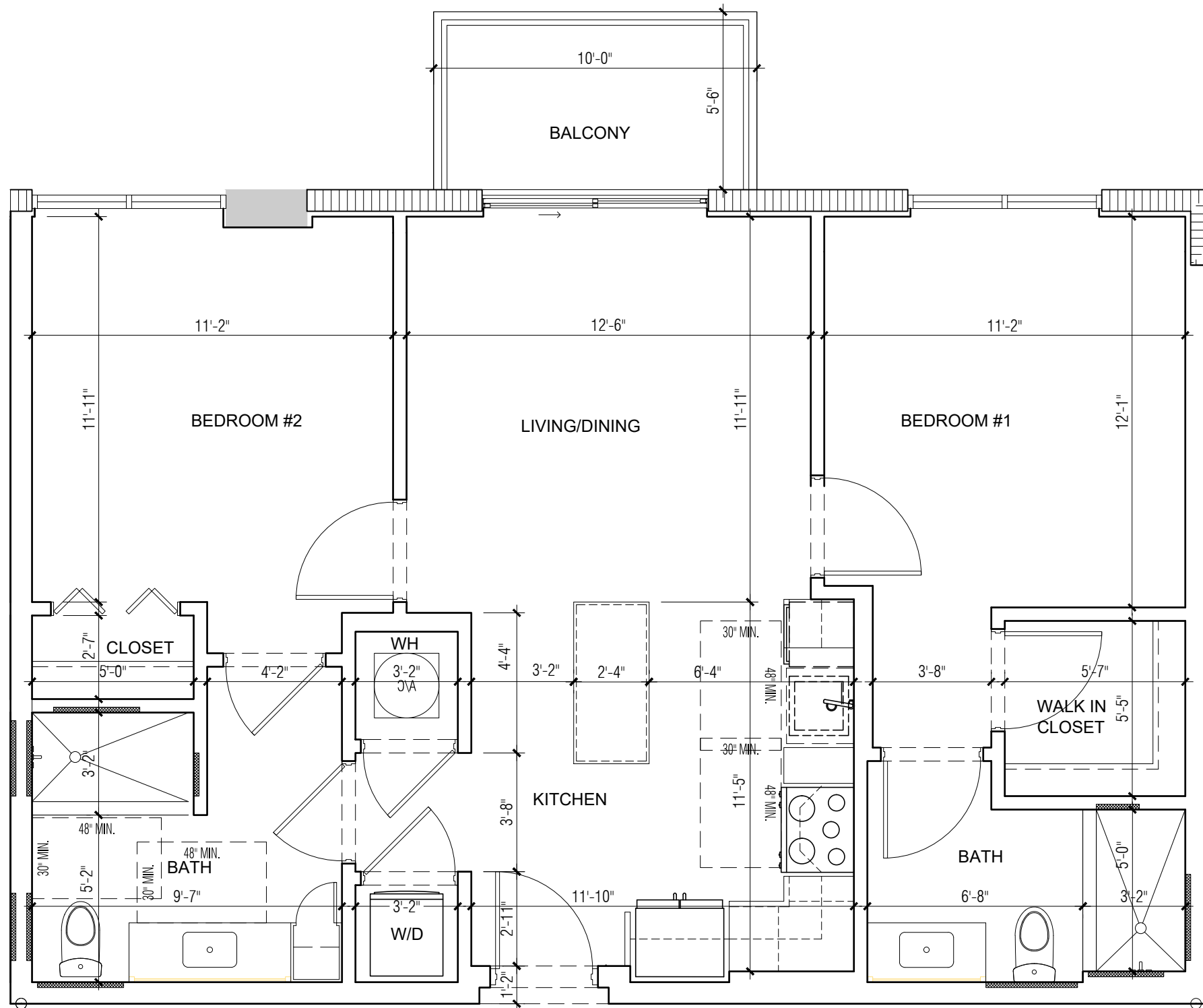
1

UNIT TYPE C-2E UNIT NUMBER 620
 635 SF - 1BR/1BATH - (Balcony area 174sf)

SCALE: 1/4" = 1'-0"

ARCHITECT
 PLANNING
 INTERIORS
 CERTIFICATION No.
 4533 PONCE DE LEON
 Coral Gables, FL
 TEL: (305) 7
 FAX: (305) 7
 E-MAIL: info@be
 ©2023 BEHAR FORT & PARTNERS ARCHITECT AND ASSOCIATES
 THE DESIGN AND DRAWING PROJECT ARE THE PROPERTY OF BEHAR FORT & PARTNERS ARCHITECT AND ASSOCIATES
 COPYRIGHT PROTECTED
 SEAL:
 Robert Behar A
 CONSULTANT
 PROPOSED RESIDENTIAL DEVELOPMENT
 CLIENT INFORMATION:
 ALTA DEVELOPMENT
 DATE: 00-00-23
 PROJECT No.
 DRAWN BY:
 CHECKED BY:
C-2E

FILE LOCATION: :R-01\CAD FILES\2022\22-023 1428 NW 14 AVE\DWG\CURRENT\ISHEETS\UNITS 11X17 (12.19.23)\C-2F.DWG
 PRINTED ON: 01.10.2024



13

UNIT TYPE C-2F : 723, 823, 923, 1223, 1423, 1523, 1623 & 1723.
 915 SF - 2BR/2BATH (Balcony area 55 sf.)

SCALE: 1/4" = 1'-0"

ARCHITECTURE
 PLANNING
 INTERIORS
 CERTIFICATION No. AA002451
 4533 PONCE DE LEON BLVD.
 Coral Gables, Florida 33146
 TEL: (305) 740-5442
 FAX: (305) 740-5443
 E-MAIL: info@beharfont.com

©2023 BEHAR FONT & PARTNERS P.A.
 THE DESIGN AND DRAWINGS FOR THIS
 PROJECT ARE THE PROPERTY OF THIS
 ARCHITECT AND ARE PROTECTED UNDER THE
 COPYRIGHT PROTECTION ACT.

SEAL

Robert Behar AR 14339
 CONSULTANT

PROPOSED RESIDENTIAL DEVELOPMENT

RIVER NORTH
 1428 N.W. 14TH AVENUE
 MIAMI, FLORIDA 33125

CLIENT INFORMATION:
 ALTA DEVELOPER

DATE:

PROJECT No: 22-023

DRAWN BY:

CHECKED BY:

C-2F

BEHAR • FONT • & PARTNERS • P • A •

