

TOWER

RESIDENCE

01

FLOORS 7 - 23

3 BEDROOMS

3.5 BATHS

PRIVATE TERRACE

INTERIOR 2,080 SF / 193.2 M<sup>2</sup>

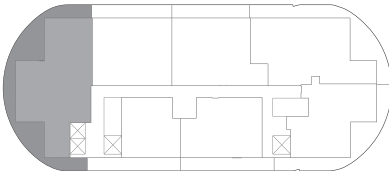
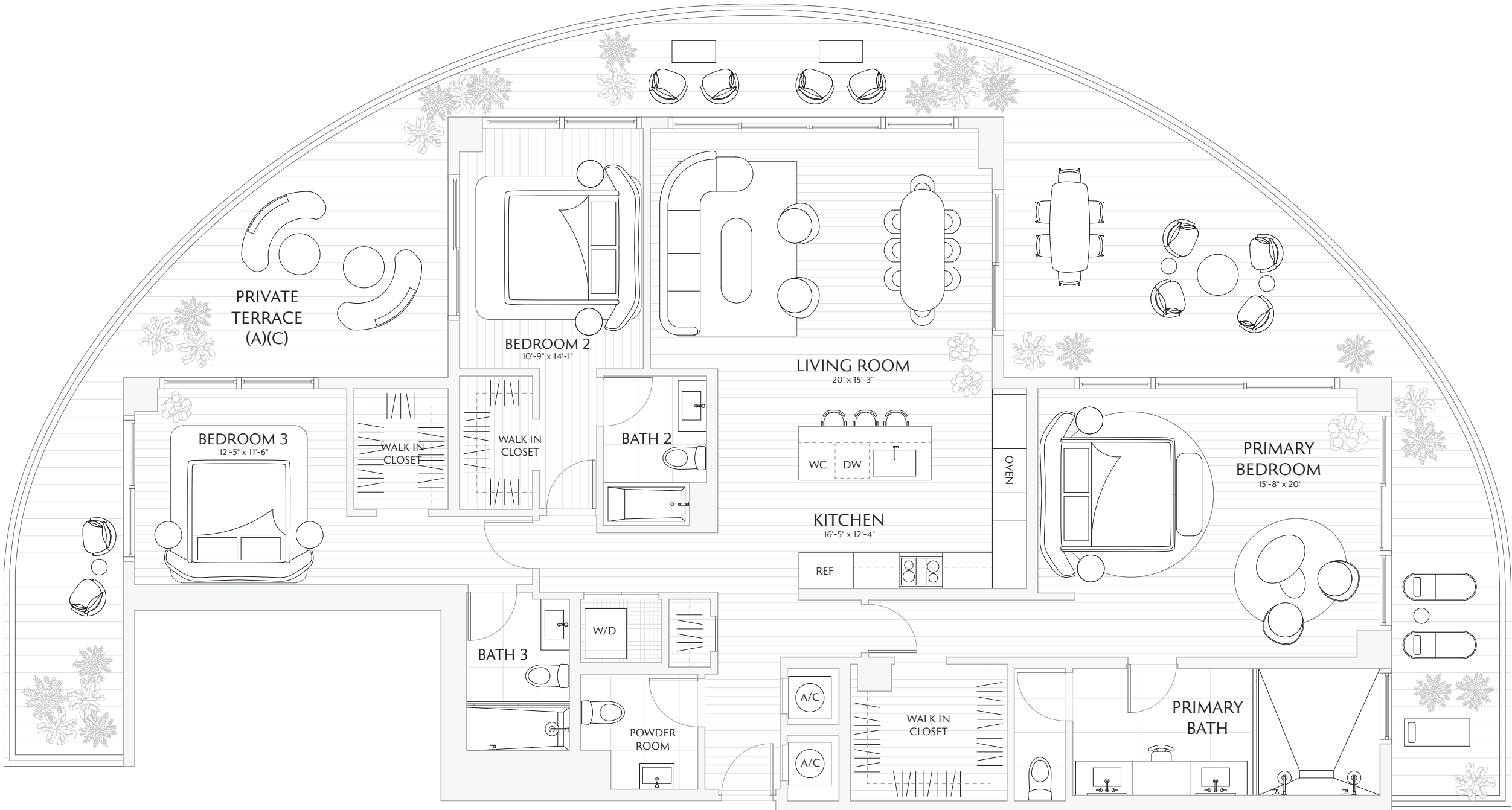
EXTERIOR 1,000 SF / 92.9 M<sup>2</sup>

TOTAL 3,080 SF / 286.1 M<sup>2</sup>

TERRACE A: 1,000 SF / 92.9 M<sup>2</sup>

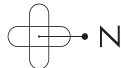
TERRACE B: 1,000 SF / 92.9 M<sup>2</sup>


TERRACE C: 1,000 SF / 92.9 M<sup>2</sup>



Downtown Skyline  
& Water

Atlantic  
Ocean



 Stated interior square footage is measured to the exterior face of exterior walls and to the centerline of interior demising walls or to the exterior face of walls adjoining corridors or other common elements or shared facilities without excluding areas that may be occupied by columns or other structural components. This method of measurement varies from, and is larger than, the dimensions that would be determined by using the description and the definition of the Unit set forth in the Declaration (which generally only includes the interior airspace between the perimeter walls and excludes structural components). For reference, the area of the unit, determined in accordance with the unit boundaries set forth in the Declaration is set forth in Exhibit "3" to the Declaration. All dimensions are approximate and may vary with actual construction. Note that measurements of rooms set forth on this floor plan are generally taken at the greatest points of each given room (as if the room were a perfect rectangle), without regard for any cutouts or irregularities. Accordingly, the area of the actual room will typically be smaller than the product obtained by multiplying the stated length times width. All floor plans and development plans are subject to change. The Developer expressly reserves the right to make modifications, revisions, and changes it deems desirable in its sole and absolute discretion. All depictions of furnishings, appliances, built-ins, counters, soffits, floor coverings, lighting, landscaping and other matters of detail, including, without limitation, items of finish and decoration, are conceptual only and are not necessarily included in each Unit. Consult your prospectus and Purchase Agreement.

SKY

RESIDENCE

01

FLOORS 24 - 30

3 BEDROOMS

3.5 BATHS

PRIVATE TERRACE

INTERIOR 2,080 SF / 193.2 M<sup>2</sup>

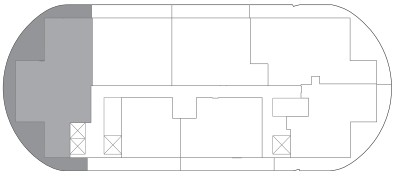
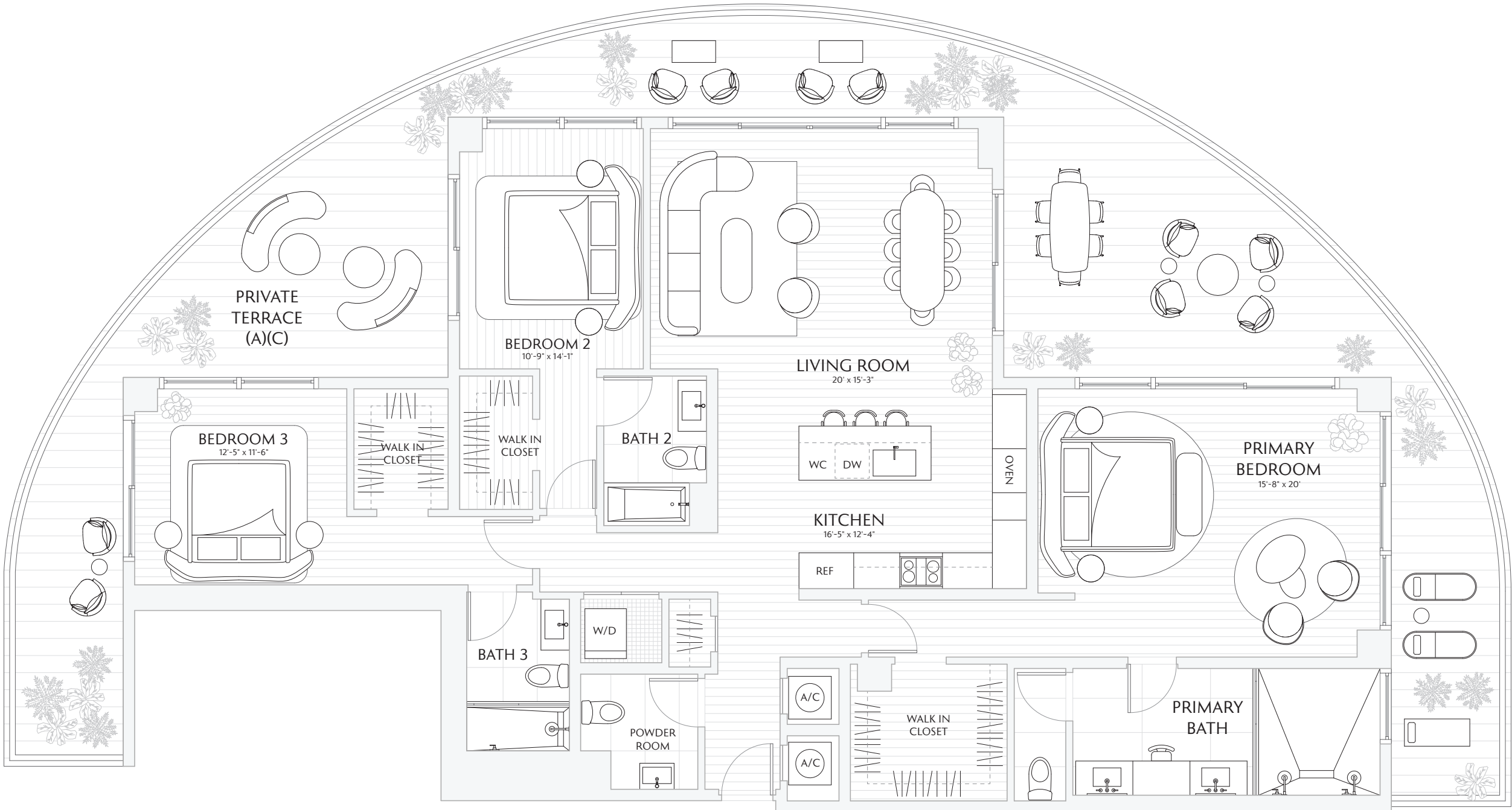
EXTERIOR 1,000 SF / 92.9 M<sup>2</sup>

TOTAL 3,080 SF / 286.1 M<sup>2</sup>

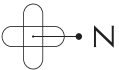
TERRACE A: 1,000 SF / 92.9 M<sup>2</sup>


TERRACE B: 1,000 SF / 92.9 M<sup>2</sup>

TERRACE C: 1,000 SF / 92.9 M<sup>2</sup>



Atlantic Ocean



 Stated interior square footage is measured to the exterior face of exterior walls and to the centerline of interior demising walls or to the exterior face of walls adjoining corridors or other common elements or shared facilities without excluding areas that may be occupied by columns or other structural components. This method of measurement varies from, and is larger than, the dimensions that would be determined by using the description and the definition of the Unit set forth in the Declaration (which generally only includes the interior airspace between the perimeter walls and excludes structural components). For reference, the area of the unit, determined in accordance with the unit boundaries set forth in the Declaration is set forth in Exhibit "3" to the Declaration. All dimensions are approximate and may vary with actual construction. Note that measurements of rooms set forth on this floor plan are generally taken at the greatest points of each given room (as if the room were a perfect rectangle), without regard for any cutouts or irregularities. Accordingly, the area of the actual room will typically be smaller than the product obtained by multiplying the stated length times width. All floor plans and development plans are subject to change. The Developer expressly reserves the right to make modifications, revisions, and changes it deems desirable in its sole and absolute discretion. All depictions of furnishings, appliances, built-ins, counters, soffits, floor coverings, lighting, landscaping and other matters of detail, including, without limitation, items of finish and decoration, are conceptual only and are not necessarily included in each Unit. Consult your prospectus and Purchase Agreement.

TOWER

RESIDENCE

02

FLOORS 7 - 23

2 BEDROOMS

2.5 BATHS

PRIVATE TERRACES

INTERIOR 1,524 SF / 141.5 M<sup>2</sup>

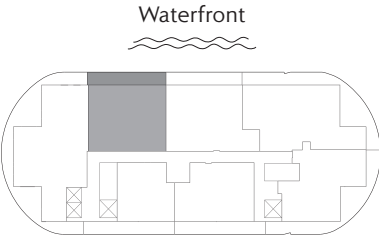
EXTERIOR 281 SF / 26 M<sup>2</sup>

TOTAL 1,805 SF / 167.6 M<sup>2</sup>


TERRACE A: 281 SF / 26 M<sup>2</sup>

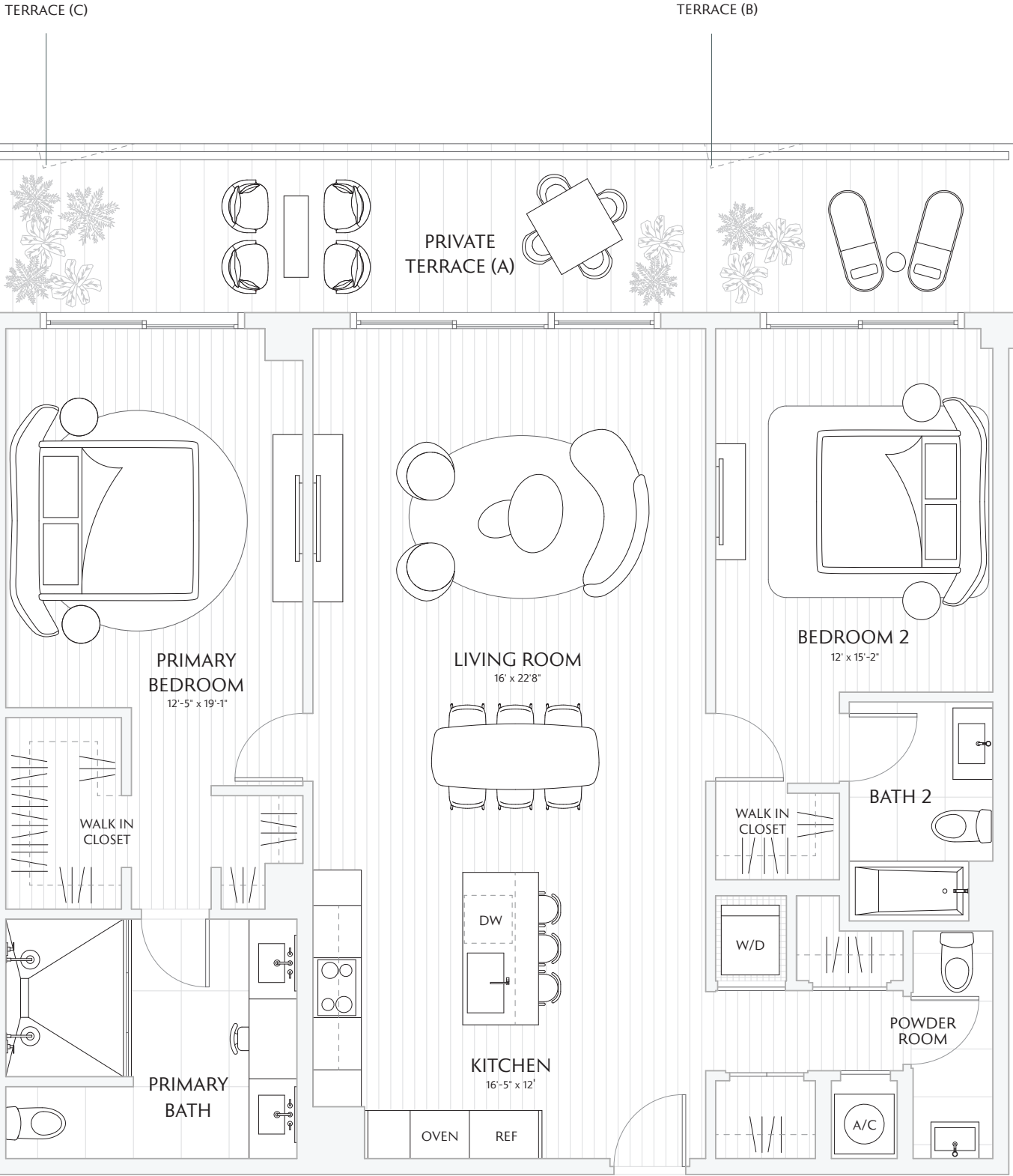
TERRACE B: 281 SF / 26 M<sup>2</sup>

TERRACE C: 283 SF / 26.3 M<sup>2</sup>



Atlantic  
Ocean

 Stated interior square footage is measured to the exterior face of exterior walls and to the centerline of interior demising walls or to the exterior face of walls adjoining corridors or other common elements or shared facilities without excluding areas that may be occupied by columns or other structural components. This method of measurement varies from, and is larger than, the dimensions that would be determined by using the description and the definition of the Unit set forth in the Declaration (which generally only includes the interior airspace between the perimeter walls and excludes structural components). For reference, the area of the unit, determined in accordance with the unit boundaries set forth in the Declaration is set forth in Exhibit "3" to the Declaration. All dimensions are approximate and may vary with actual construction. Note that measurements of rooms set forth on this floor plan are generally taken at the greatest points of each given room (as if the room were a perfect rectangle), without regard for any cutouts or irregularities. Accordingly, the area of the actual room will typically be smaller than the product obtained by multiplying the stated length times width. All floor plans and development plans are subject to change. The Developer expressly reserves the right to make modifications, revisions, and changes it deems desirable in its sole and absolute discretion. All depictions of furnishings, appliances, built-ins, counters, soffits, floor coverings, lighting, landscaping and other matters of detail, including, without limitation, items of finish and decoration, are conceptual only and are not necessarily included in each Unit. Consult your prospectus and Purchase Agreement.



SKY

RESIDENCE

02

FLOORS 24 - 30

2 BEDROOMS

2.5 BATHS

PRIVATE TERRACES

INTERIOR 1,524 SF / 141.5 M<sup>2</sup>

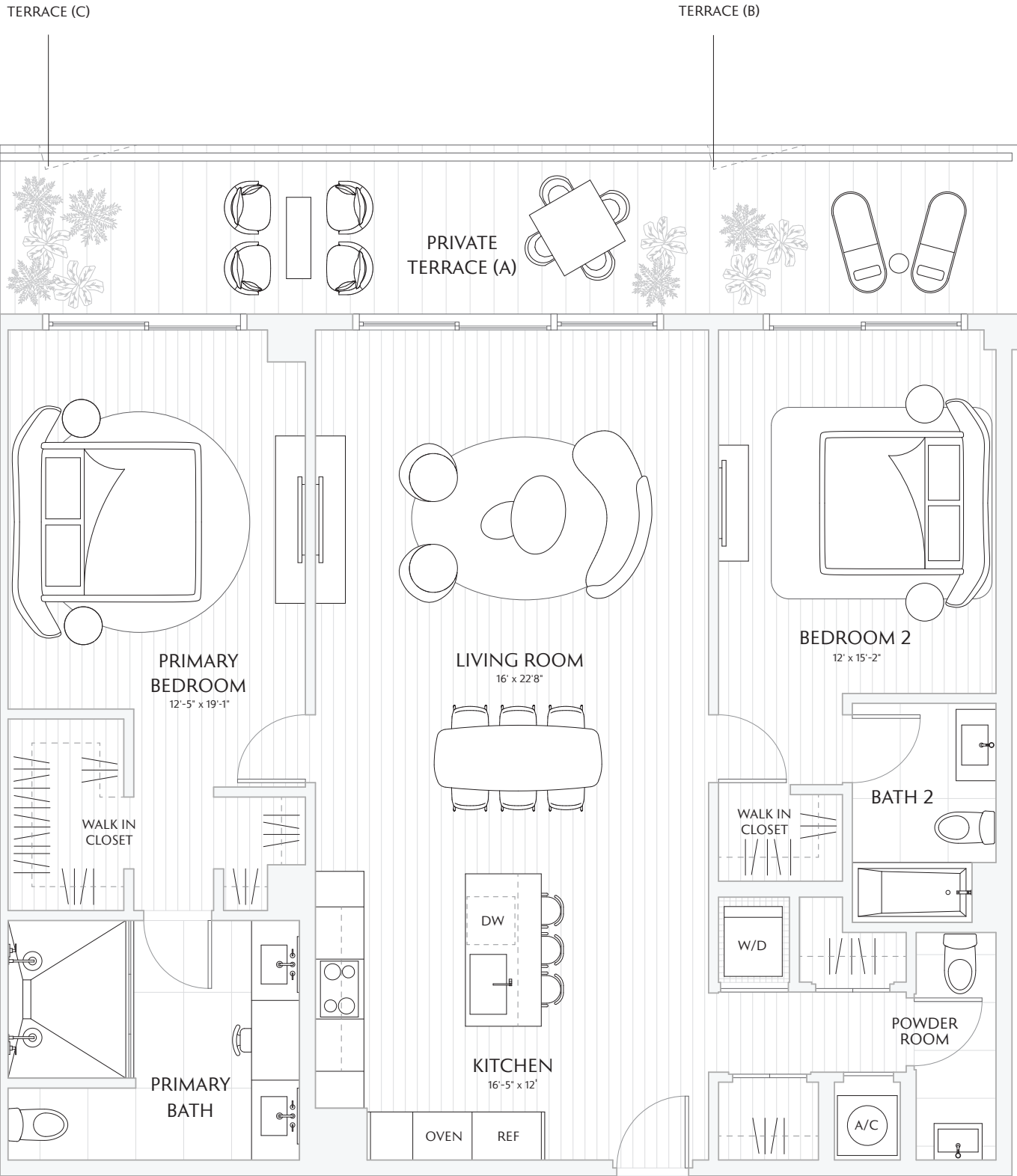
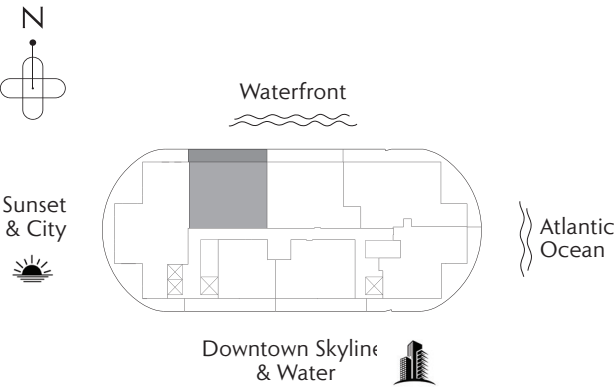
EXTERIOR 281 SF / 26 M<sup>2</sup>


TOTAL 1,805 SF / 167.6 M<sup>2</sup>

TERRACE A: 281 SF / 26 M<sup>2</sup>

TERRACE B: 281 SF / 26 M<sup>2</sup>

TERRACE C: 283 SF / 26.3 M<sup>2</sup>



 Stated interior square footage is measured to the exterior face of exterior walls and to the centerline of interior demising walls or to the exterior face of walls adjoining corridors or other common elements or shared facilities without excluding areas that may be occupied by columns or other structural components. This method of measurement varies from, and is larger than, the dimensions that would be determined by using the description and the definition of the Unit set forth in the Declaration (which generally only includes the interior airspace between the perimeter walls and excludes structural components). For reference, the area of the unit, determined in accordance with the unit boundaries set forth in the Declaration is set forth in Exhibit "3" to the Declaration. All dimensions are approximate and may vary with actual construction. Note that measurements of rooms set forth on this floor plan are generally taken at the greatest points of each given room (as if the room were a perfect rectangle), without regard for any cutouts or irregularities. Accordingly, the area of the actual room will typically be smaller than the product obtained by multiplying the stated length times width. All floor plans and development plans are subject to change. The Developer expressly reserves the right to make modifications, revisions, and changes it deems desirable in its sole and absolute discretion. All depictions of furnishings, appliances, built-ins, counters, soffits, floor coverings, lighting, landscaping and other matters of detail, including, without limitation, items of finish and decoration, are conceptual only and are not necessarily included in each Unit. Consult your prospectus and Purchase Agreement.

TOWER  
RESIDENCE

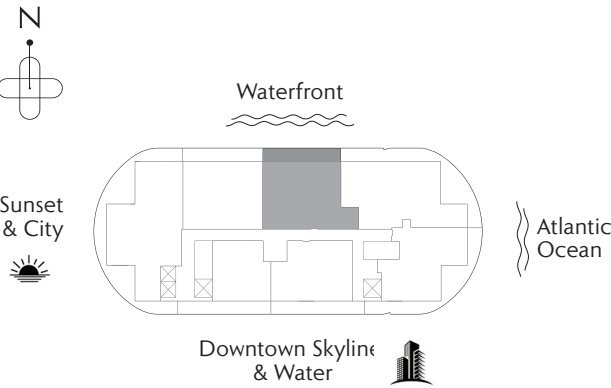
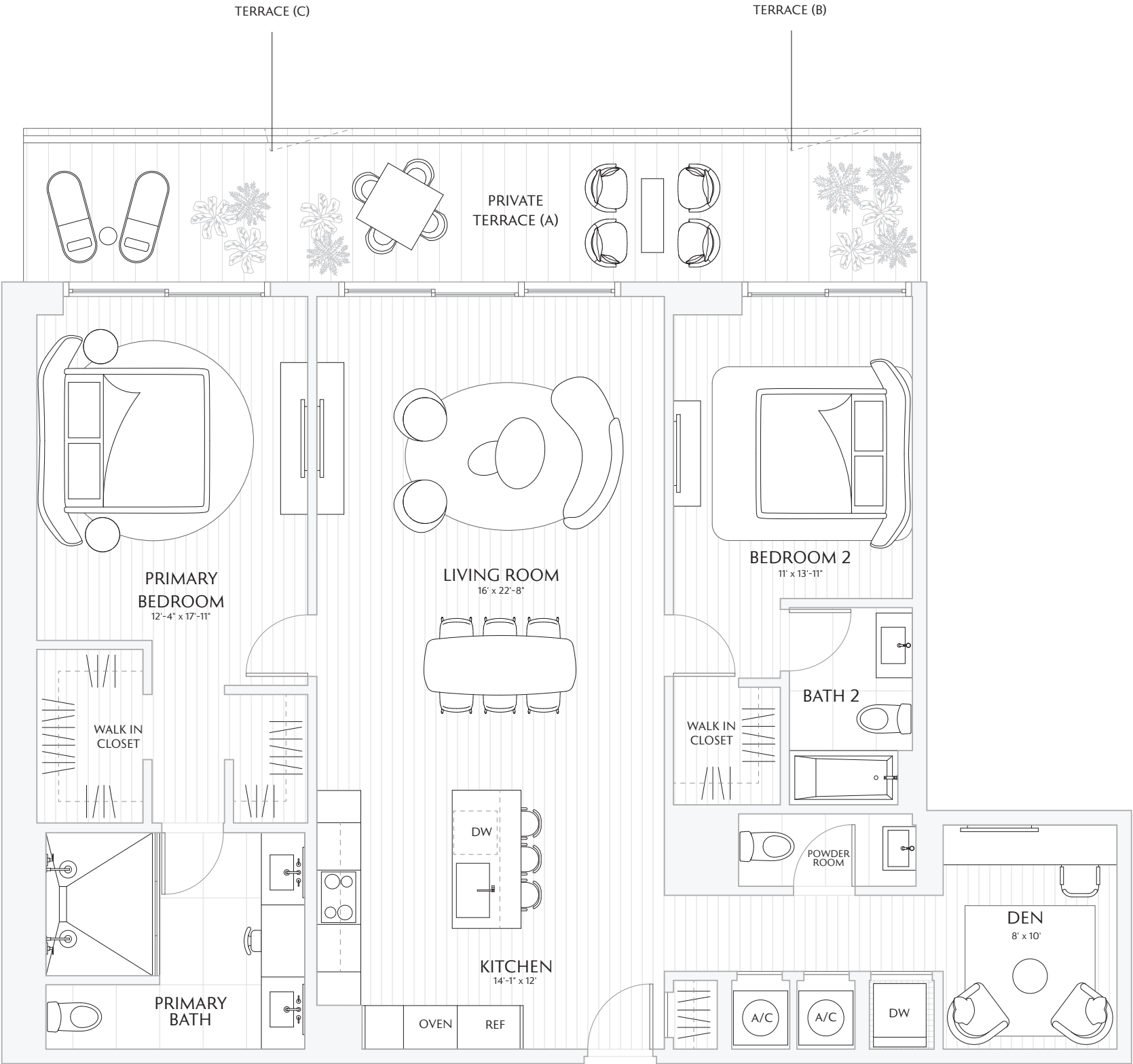
03


FLOORS 7 - 23

- 2 BEDROOMS
- DEN
- 2.5 BATHS
- PRIVATE TERRACE

INTERIOR 1,600 SF / 148.6 M<sup>2</sup>  
EXTERIOR 272 SF / 25 M<sup>2</sup>  
TOTAL 1,872 SF / 173 M<sup>2</sup>

TERRACE A: 272 SF / 25 M<sup>2</sup>  
TERRACE B: 272 SF / 25 M<sup>2</sup>  
TERRACE C: 274 SF / 25 M<sup>2</sup>



 Stated interior square footage is measured to the exterior face of exterior walls and to the centerline of interior demising walls or to the exterior face of walls adjoining corridors or other common elements or shared facilities without excluding areas that may be occupied by columns or other structural components. This method of measurement varies from, and is larger than, the dimensions that would be determined by using the description and the definition of the Unit set forth in the Declaration (which generally only includes the interior airspace between the perimeter walls and excludes structural components). For reference, the area of the unit, determined in accordance with the unit boundaries set forth in the Declaration is set forth in Exhibit "3" to the Declaration. All dimensions are approximate and may vary with actual construction. Note that measurements of rooms set forth on this floor plan are generally taken at the greatest points of each given room (as if the room were a perfect rectangle), without regard for any cutouts or irregularities. Accordingly, the area of the actual room will typically be smaller than the product obtained by multiplying the stated length times width. All floor plans and development plans are subject to change. The Developer expressly reserves the right to make modifications, revisions, and changes it deems desirable in its sole and absolute discretion. All depictions of furnishings, appliances, built-ins, counters, soffits, floor coverings, lighting, landscaping and other matters of detail, including, without limitation, items of finish and decoration, are conceptual only and are not necessarily included in each Unit. Consult your prospectus and Purchase Agreement.



SKY

RESIDENCE

03

FLOORS 24 - 30

- 2 BEDROOMS
- DEN
- 2.5 BATHS
- PRIVATE TERRACE

INTERIOR 1,600 SF / 148.6 M<sup>2</sup>

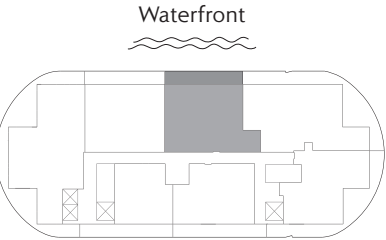
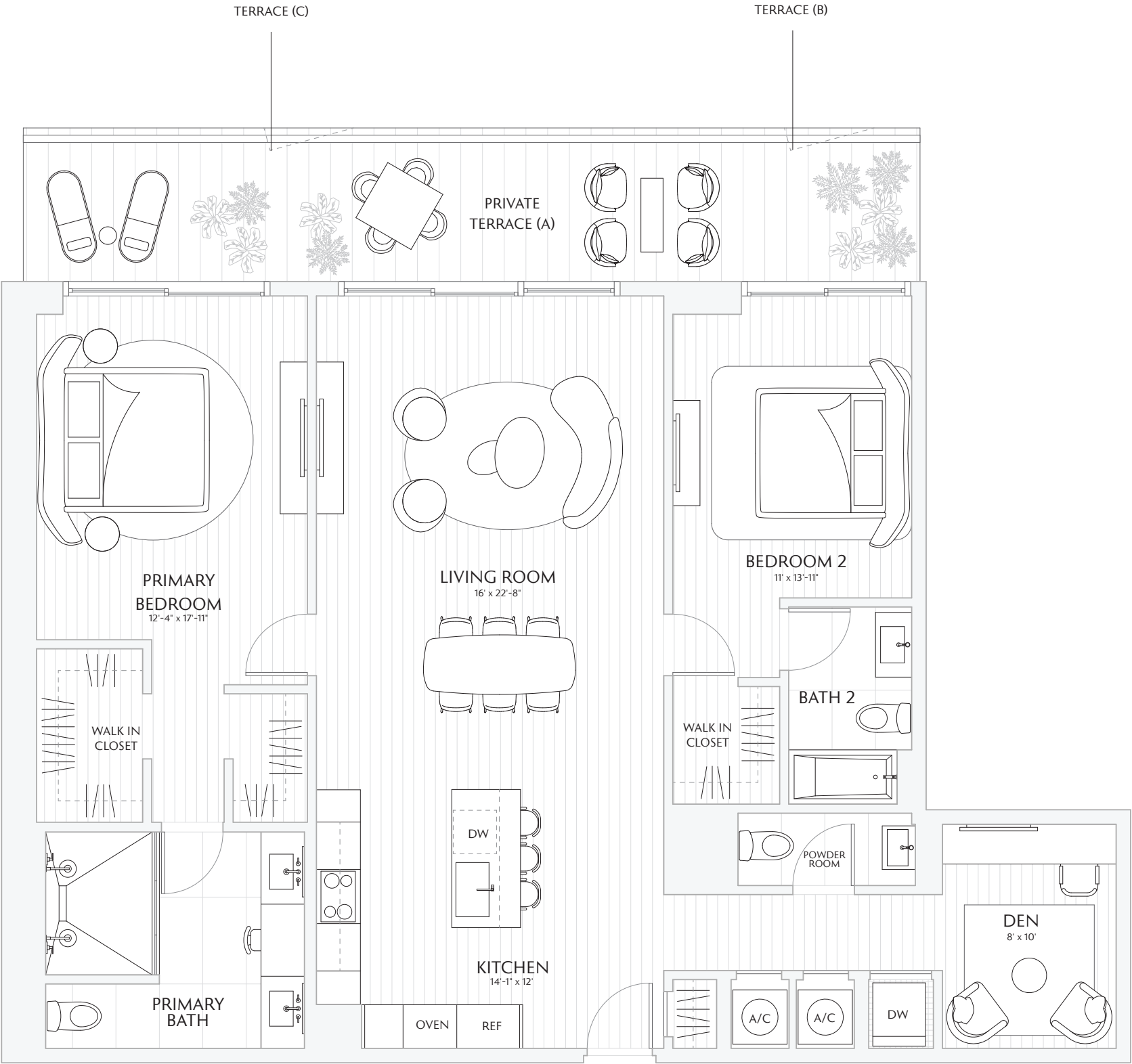
EXTERIOR 272 SF / 25 M<sup>2</sup>


TOTAL 1,872 SF / 173 M<sup>2</sup>

TERRACE A: 272 SF / 25 M<sup>2</sup>

TERRACE B: 272 SF / 25 M<sup>2</sup>

TERRACE C: 274 SF / 25 M<sup>2</sup>



 Stated interior square footage is measured to the exterior face of exterior walls and to the centerline of interior demising walls or to the exterior face of walls adjoining corridors or other common elements or shared facilities without excluding areas that may be occupied by columns or other structural components. This method of measurement varies from, and is larger than, the dimensions that would be determined by using the description and the definition of the Unit set forth in the Declaration (which generally only includes the interior airspace between the perimeter walls and excludes structural components). For reference, the area of the unit, determined in accordance with the unit boundaries set forth in the Declaration is set forth in Exhibit "3" to the Declaration. All dimensions are approximate and may vary with actual construction. Note that measurements of rooms set forth on this floor plan are generally taken at the greatest points of each given room (as if the room were a perfect rectangle), without regard for any cutouts or irregularities. Accordingly, the area of the actual room will typically be smaller than the product obtained by multiplying the stated length times width. All floor plans and development plans are subject to change. The Developer expressly reserves the right to make modifications, revisions, and changes it deems desirable in its sole and absolute discretion. All depictions of furnishings, appliances, built-ins, counters, soffits, floor coverings, lighting, landscaping and other matters of detail, including, without limitation, items of finish and decoration, are conceptual only and are not necessarily included in each Unit. Consult your prospectus and Purchase Agreement.

TOWER  
RESIDENCE

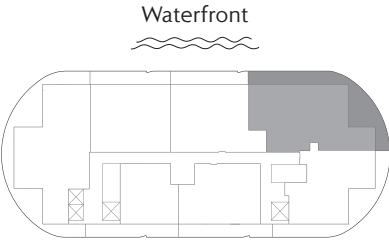
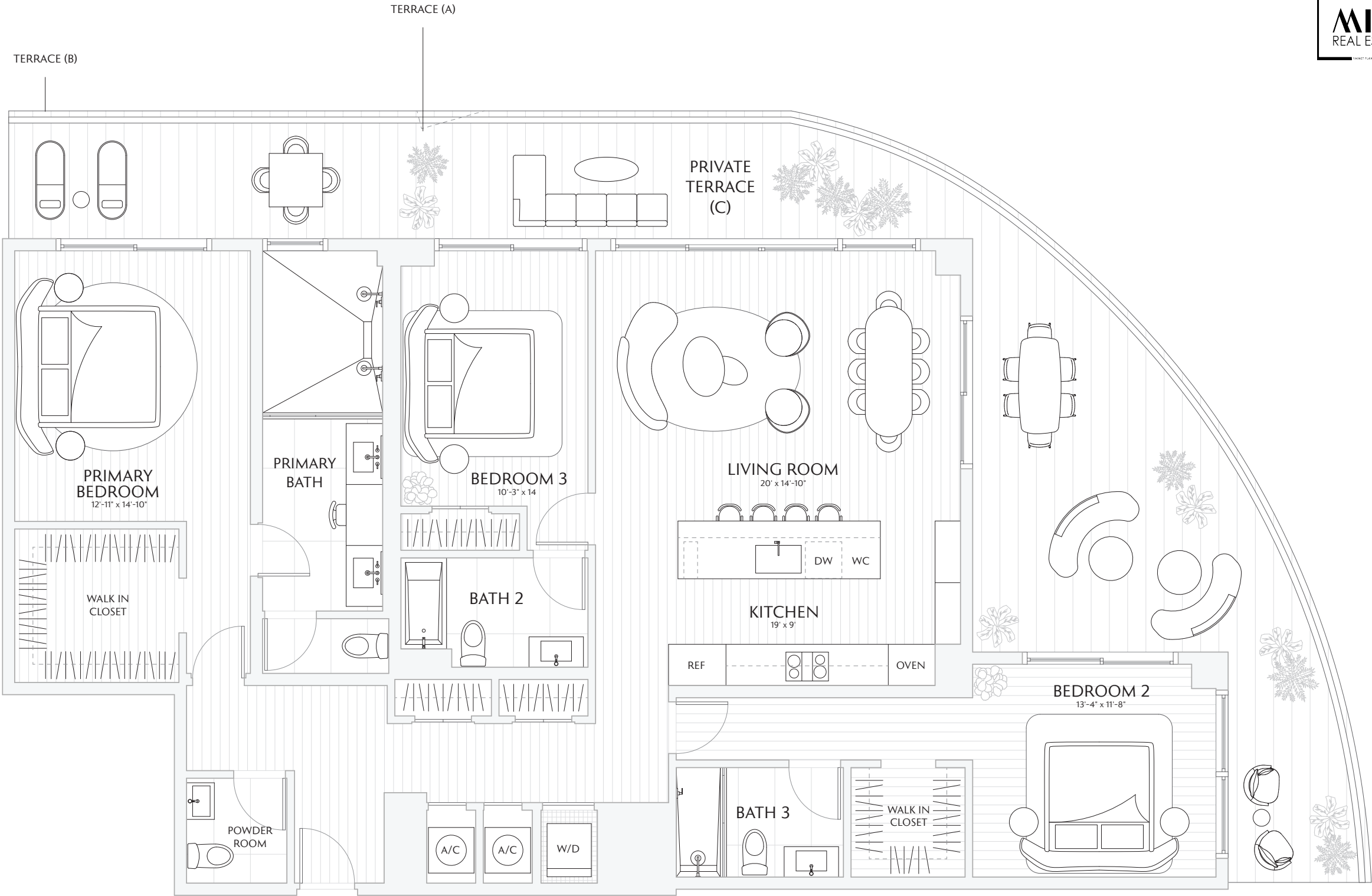
04


FLOORS 7 - 23

3 BEDROOMS  
3.5 BATHS  
PRIVATE TERRACE

INTERIOR 1,958 SF / 181.9 M<sup>2</sup>  
EXTERIOR 723 SF / 67 M<sup>2</sup>  
TOTAL 2,681 SF / 249 M<sup>2</sup>

TERRACE A: 725 SF / 67.3 M<sup>2</sup>  
TERRACE B: 725 SF / 67.3 M<sup>2</sup>  
TERRACE C: 723 SF / 67 M<sup>2</sup>



 Stated interior square footage is measured to the exterior face of exterior walls and to the centerline of interior demising walls or to the exterior face of walls adjoining corridors or other common elements or shared facilities without excluding areas that may be occupied by columns or other structural components. This method of measurement varies from, and is larger than, the dimensions that would be determined by using the description and the definition of the Unit set forth in the Declaration (which generally only includes the interior airspace between the perimeter walls and excludes structural components). For reference, the area of the unit, determined in accordance with the unit boundaries set forth in the Declaration is set forth in Exhibit "3" to the Declaration. All dimensions are approximate and may vary with actual construction. Note that measurements of rooms set forth on this floor plan are generally taken at the greatest points of each given room (as if the room were a perfect rectangle), without regard for any cutouts or irregularities. Accordingly, the area of the actual room will typically be smaller than the product obtained by multiplying the stated length times width. All floor plans and development plans are subject to change. The Developer expressly reserves the right to make modifications, revisions, and changes it deems desirable in its sole and absolute discretion. All depictions of furnishings, appliances, built-ins, counters, soffits, floor coverings, lighting, landscaping and other matters of detail, including, without limitation, items of finish and decoration, are conceptual only and are not necessarily included in each Unit. Consult your prospectus and Purchase Agreement.

SKY  
RESIDENCE

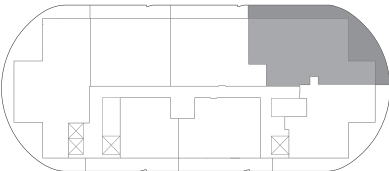
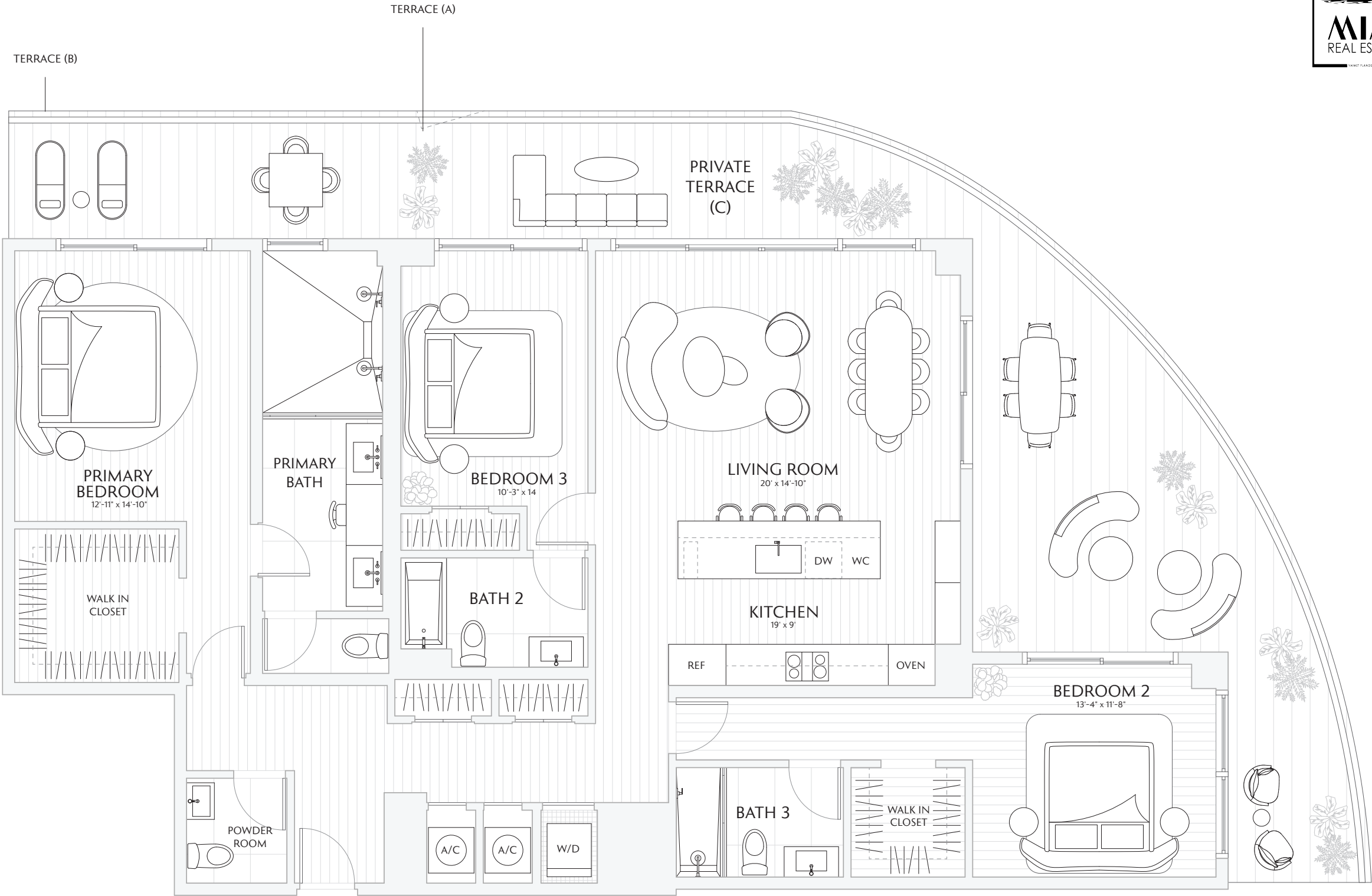
04

FLOORS 24 - 30

3 BEDROOMS  
3.5 BATHS  
PRIVATE TERRACE


INTERIOR 1,958 SF / 181.9 M<sup>2</sup>  
EXTERIOR 723 SF / 67 M<sup>2</sup>  
TOTAL 2,681 SF / 249 M<sup>2</sup>

TERRACE A: 725 SF / 67.3 M<sup>2</sup>  
TERRACE B: 725 SF / 67.3 M<sup>2</sup>  
TERRACE C: 723 SF / 67 M<sup>2</sup>



Downtown Skyline  
& Water



 Stated interior square footage is measured to the exterior face of exterior walls and to the centerline of interior demising walls or to the exterior face of walls adjoining corridors or other common elements or shared facilities without excluding areas that may be occupied by columns or other structural components. This method of measurement varies from, and is larger than, the dimensions that would be determined by using the description and the definition of the Unit set forth in the Declaration (which generally only includes the interior airspace between the perimeter walls and excludes structural components). For reference, the area of the unit, determined in accordance with the unit boundaries set forth in the Declaration is set forth in Exhibit "3" to the Declaration. All dimensions are approximate and may vary with actual construction. Note that measurements of rooms set forth on this floor plan are generally taken at the greatest points of each given room (as if the room were a perfect rectangle), without regard for any cutouts or irregularities. Accordingly, the area of the actual room will typically be smaller than the product obtained by multiplying the stated length times width. All floor plans and development plans are subject to change. The Developer expressly reserves the right to make modifications, revisions, and changes it deems desirable in its sole and absolute discretion. All depictions of furnishings, appliances, built-ins, counters, soffits, floor coverings, lighting, landscaping and other matters of detail, including, without limitation, items of finish and decoration, are conceptual only and are not necessarily included in each Unit. Consult your prospectus and Purchase Agreement.



TOWER  
RESIDENCE

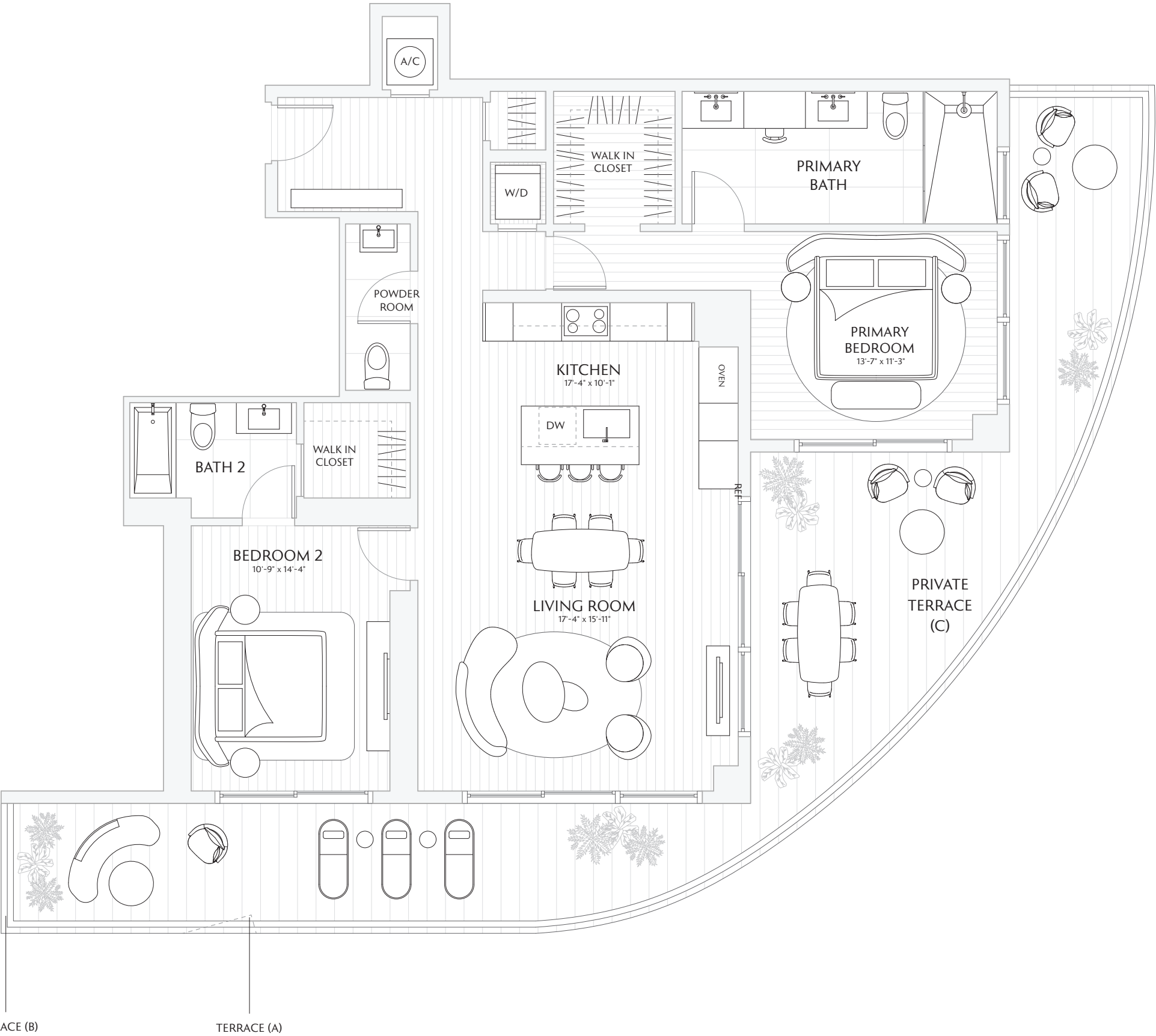
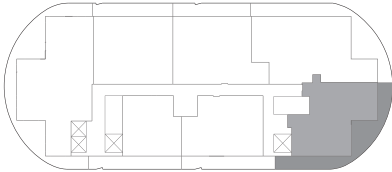
05


FLOORS 7 - 23

2 BEDROOMS  
2.5 BATHS  
PRIVATE TERRACE

INTERIOR 1,370 SF / 127.2 M<sup>2</sup>  
EXTERIOR 616 SF / 57.2 M<sup>2</sup>  
TOTAL 1,986 SF / 184.4 M<sup>2</sup>

TERRACE A: 618 SF / 57.4 M<sup>2</sup>  
TERRACE B: 618 SF / 57.4 M<sup>2</sup>  
TERRACE C: 616 SF / 57.2 M<sup>2</sup>



 Stated interior square footage is measured to the exterior face of exterior walls and to the centerline of interior demising walls or to the exterior face of walls adjoining corridors or other common elements or shared facilities without excluding areas that may be occupied by columns or other structural components. This method of measurement varies from, and is larger than, the dimensions that would be determined by using the description and the definition of the Unit set forth in the Declaration (which generally only includes the interior airspace between the perimeter walls and excludes structural components). For reference, the area of the unit, determined in accordance with the unit boundaries set forth in the Declaration is set forth in Exhibit "3" to the Declaration. All dimensions are approximate and may vary with actual construction. Note that measurements of rooms set forth on this floor plan are generally taken at the greatest points of each given room (as if the room were a perfect rectangle), without regard for any cutouts or irregularities. Accordingly, the area of the actual room will typically be smaller than the product obtained by multiplying the stated length times width. All floor plans and development plans are subject to change. The Developer expressly reserves the right to make modifications, revisions, and changes it deems desirable in its sole and absolute discretion. All depictions of furnishings, appliances, built-ins, counters, soffits, floor coverings, lighting, landscaping and other matters of detail, including, without limitation, items of finish and decoration, are conceptual only and are not necessarily included in each Unit. Consult your prospectus and Purchase Agreement.

SKY

RESIDENCE

05

FLOORS 24 - 30

2 BEDROOMS

2.5 BATHS

PRIVATE TERRACE

INTERIOR 1,370 SF / 127.2 M<sup>2</sup>

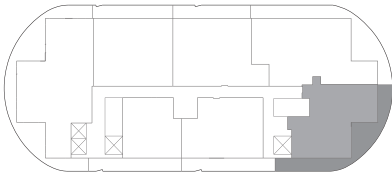
EXTERIOR 616 SF / 57.2 M<sup>2</sup>


TOTAL 1,986 SF / 184.4 M<sup>2</sup>

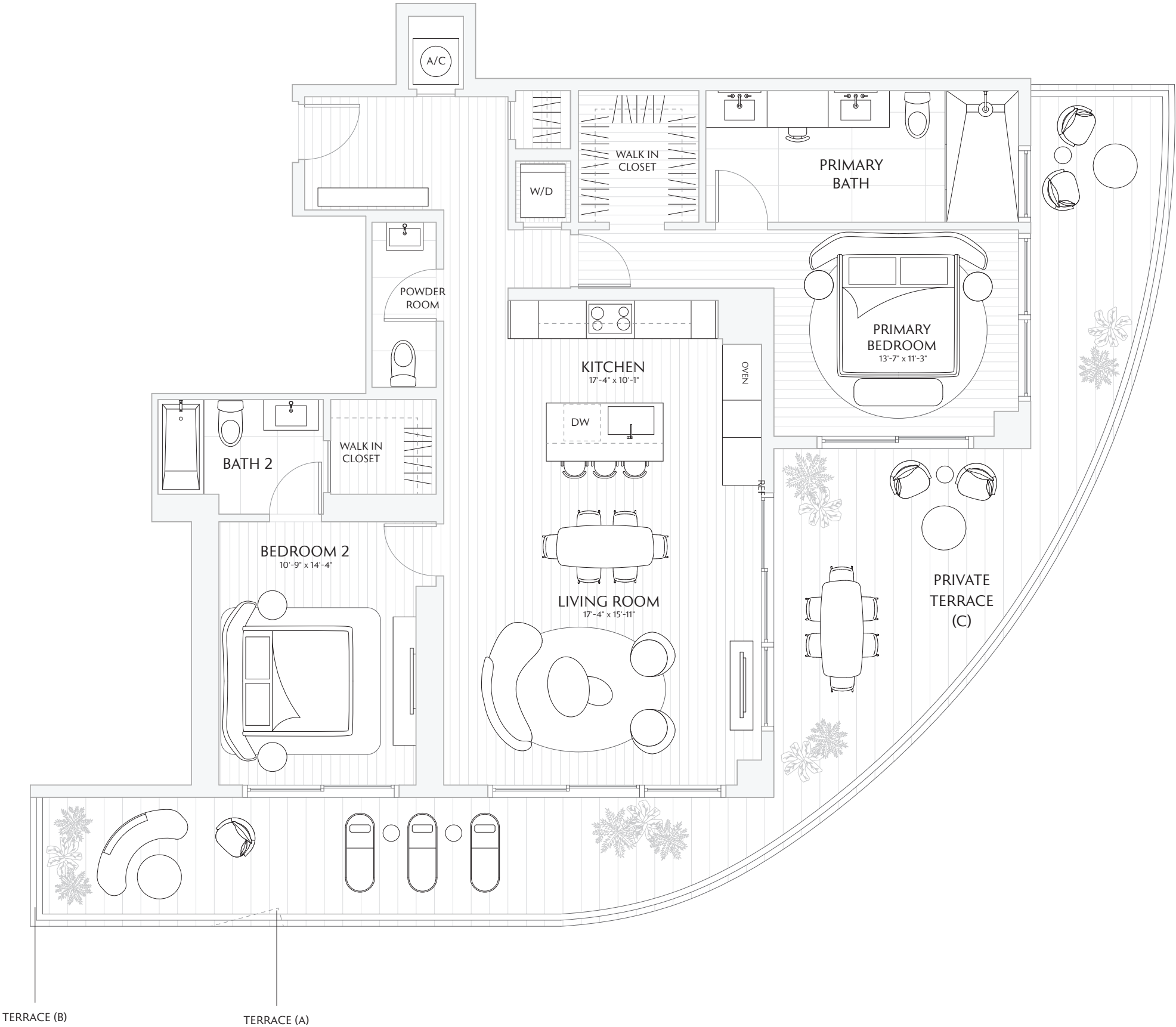
TERRACE A: 618 SF / 57.4 M<sup>2</sup>

TERRACE B: 618 SF / 57.4 M<sup>2</sup>

TERRACE C: 616 SF / 57.2 M<sup>2</sup>



 Stated interior square footage is measured to the exterior face of exterior walls and to the centerline of interior demising walls or to the exterior face of walls adjoining corridors or other common elements or shared facilities without excluding areas that may be occupied by columns or other structural components. This method of measurement varies from, and is larger than, the dimensions that would be determined by using the description and the definition of the Unit set forth in the Declaration (which generally only includes the interior airspace between the perimeter walls and excludes structural components). For reference, the area of the unit, determined in accordance with the unit boundaries set forth in the Declaration is set forth in Exhibit "3" to the Declaration. All dimensions are approximate and may vary with actual construction. Note that measurements of rooms set forth on this floor plan are generally taken at the greatest points of each given room (as if the room were a perfect rectangle), without regard for any cutouts or irregularities. Accordingly, the area of the actual room will typically be smaller than the product obtained by multiplying the stated length times width. All floor plans and development plans are subject to change. The Developer expressly reserves the right to make modifications, revisions, and changes it deems desirable in its sole and absolute discretion. All depictions of furnishings, appliances, built-ins, counters, soffits, floor coverings, lighting, landscaping and other matters of detail, including, without limitation, items of finish and decoration, are conceptual only and are not necessarily included in each Unit. Consult your prospectus and Purchase Agreement.



TOWER  
RESIDENCE

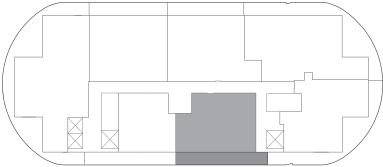
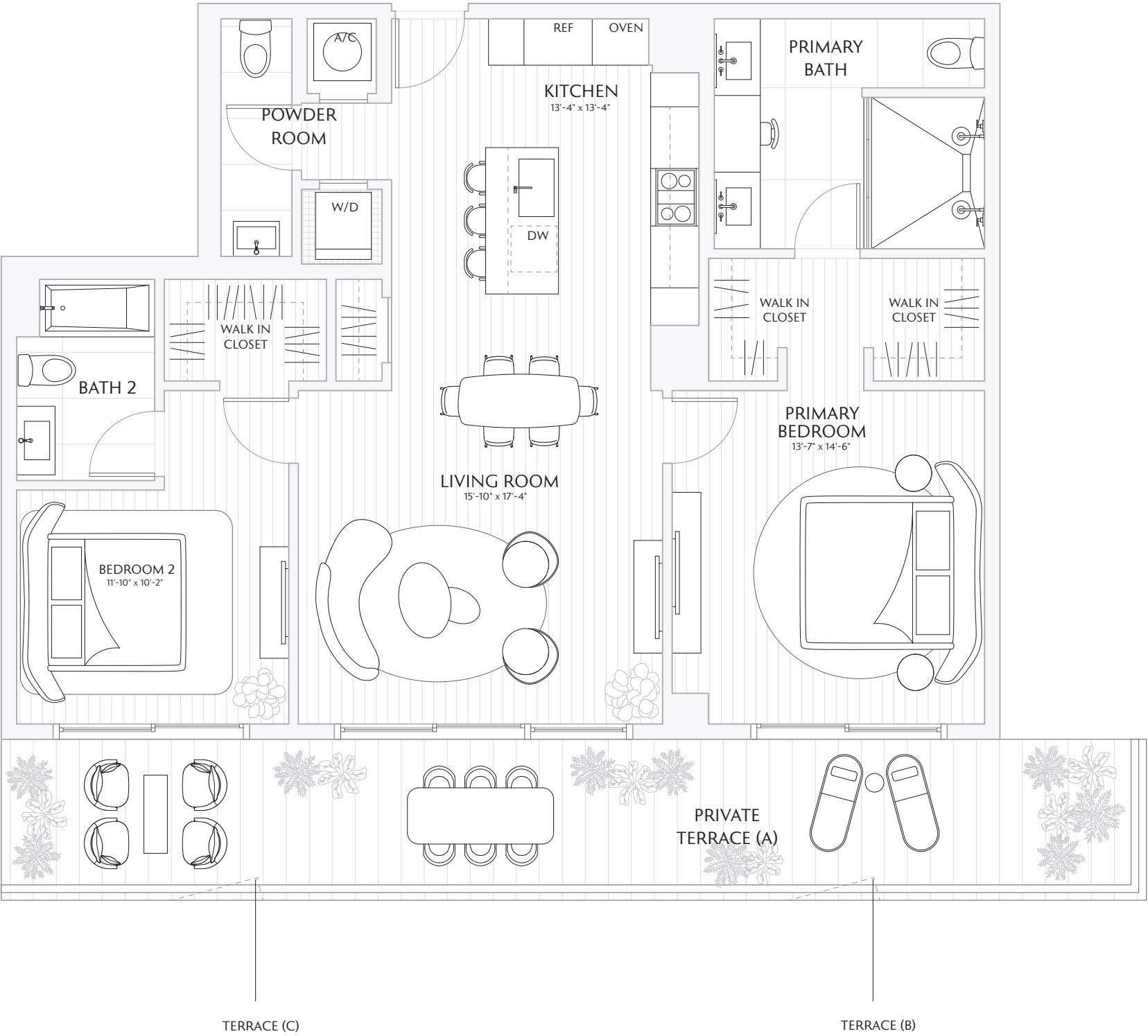
06

FLOORS 7 - 23

2 BEDROOMS  
2.5 BATHS  
PRIVATE TERRACE


INTERIOR 1,275 SF / 118.4 M<sup>2</sup>  
EXTERIOR 324 SF / 30.1 M<sup>2</sup>  
TOTAL 1,599 SF / 148.5 M<sup>2</sup>

TERRACE A: 324 SF / 30.1 M<sup>2</sup>  
TERRACE B: 324 SF / 30.1 M<sup>2</sup>  
TERRACE C: 326 SF / 30.2 M<sup>2</sup>



Atlantic Ocean

Downtown Skyline & Water

 Stated interior square footage is measured to the exterior face of exterior walls and to the centerline of interior demising walls or to the exterior face of walls adjoining corridors or other common elements or shared facilities without excluding areas that may be occupied by columns or other structural components. This method of measurement varies from, and is larger than, the dimensions that would be determined by using the description and the definition of the Unit set forth in the Declaration (which generally only includes the interior airspace between the perimeter walls and excludes structural components). For reference, the area of the unit, determined in accordance with the unit boundaries set forth in the Declaration is set forth in Exhibit "3" to the Declaration. All dimensions are approximate and may vary with actual construction. Note that measurements of rooms set forth on this floor plan are generally taken at the greatest points of each given room (as if the room were a perfect rectangle), without regard for any cutouts or irregularities. Accordingly, the area of the actual room will typically be smaller than the product obtained by multiplying the stated length times width. All floor plans and development plans are subject to change. The Developer expressly reserves the right to make modifications, revisions, and changes it deems desirable in its sole and absolute discretion. All depictions of furnishings, appliances, built-ins, counters, soffits, floor coverings, lighting, landscaping and other matters of detail, including, without limitation, items of finish and decoration, are conceptual only and are not necessarily included in each Unit. Consult your prospectus and Purchase Agreement.

SKY

RESIDENCE

06

FLOORS 24 - 30

2 BEDROOMS

2.5 BATHS

PRIVATE TERRACE

INTERIOR 1,275 SF / 118.4 M<sup>2</sup>

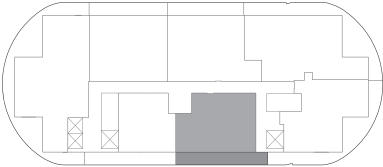
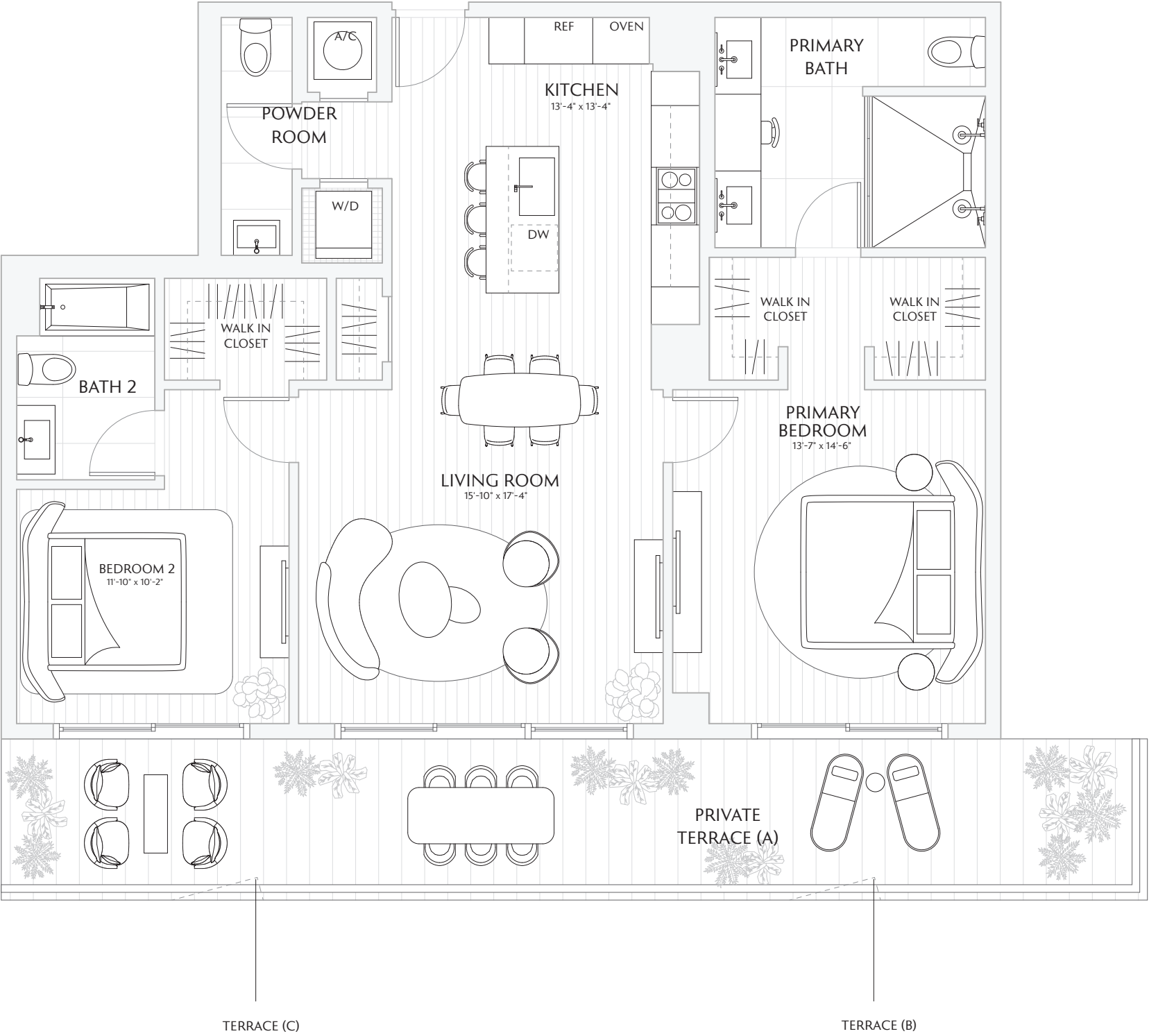
EXTERIOR 324 SF / 30.1 M<sup>2</sup>


TOTAL 1,599 SF / 148.5 M<sup>2</sup>

TERRACE A: 324 SF / 30.1 M<sup>2</sup>

TERRACE B: 324 SF / 30.1 M<sup>2</sup>

TERRACE C: 326 SF / 30.2 M<sup>2</sup>



 Stated interior square footage is measured to the exterior face of exterior walls and to the centerline of interior demising walls or to the exterior face of walls adjoining corridors or other common elements or shared facilities without excluding areas that may be occupied by columns or other structural components. This method of measurement varies from, and is larger than, the dimensions that would be determined by using the description and the definition of the Unit set forth in the Declaration (which generally only includes the interior airspace between the perimeter walls and excludes structural components). For reference, the area of the unit, determined in accordance with the unit boundaries set forth in the Declaration is set forth in Exhibit "3" to the Declaration. All dimensions are approximate and may vary with actual construction. Note that measurements of rooms set forth on this floor plan are generally taken at the greatest points of each given room (as if the room were a perfect rectangle), without regard for any cutouts or irregularities. Accordingly, the area of the actual room will typically be smaller than the product obtained by multiplying the stated length times width. All floor plans and development plans are subject to change. The Developer expressly reserves the right to make modifications, revisions, and changes it deems desirable in its sole and absolute discretion. All depictions of furnishings, appliances, built-ins, counters, soffits, floor coverings, lighting, landscaping and other matters of detail, including, without limitation, items of finish and decoration, are conceptual only and are not necessarily included in each Unit. Consult your prospectus and Purchase Agreement.

TOWER

RESIDENCE

07

FLOORS 7 - 23

1 BEDROOM

DEN

2 BATHS

PRIVATE TERRACE

INTERIOR 915 SF / 85 M<sup>2</sup>

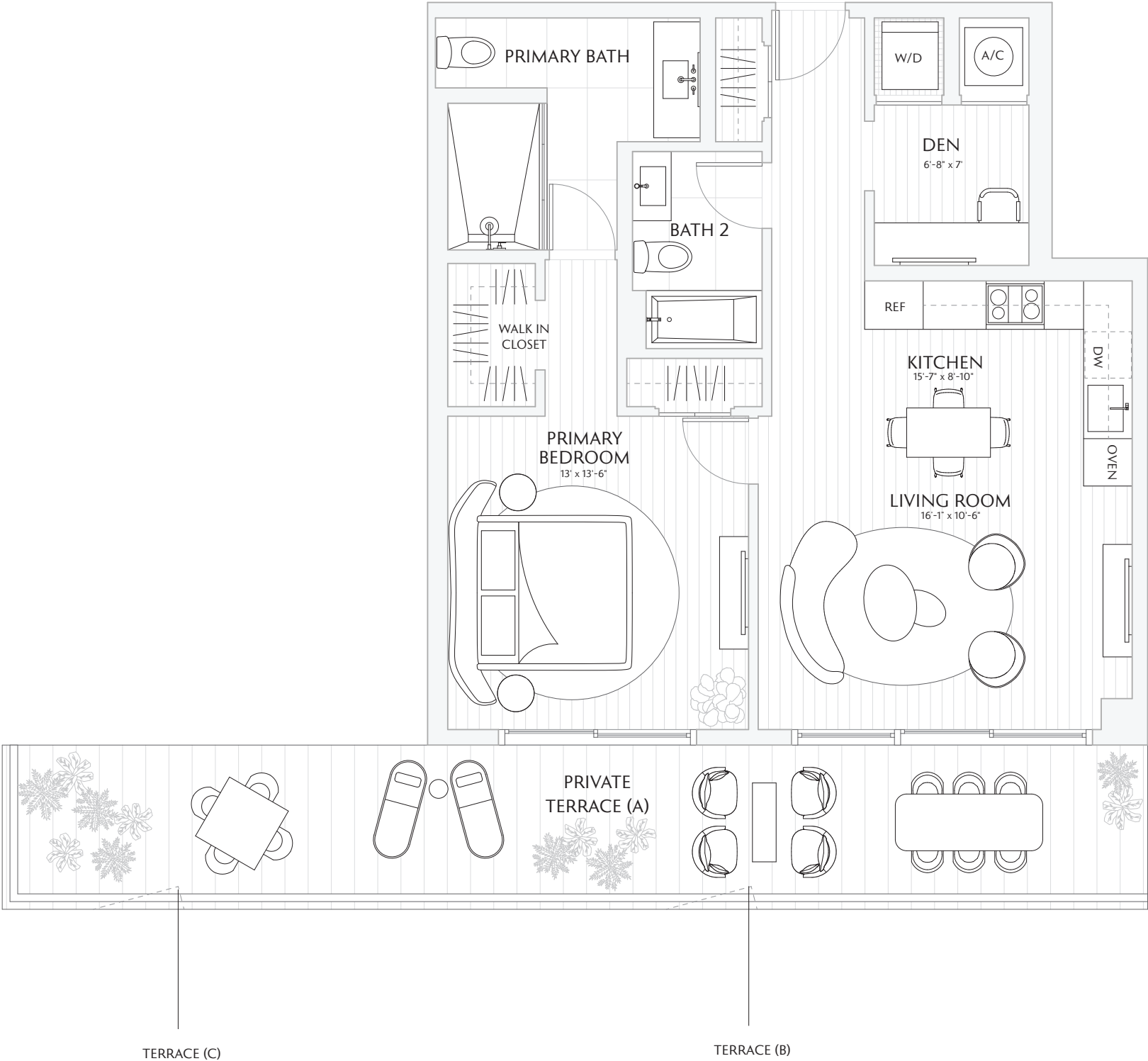
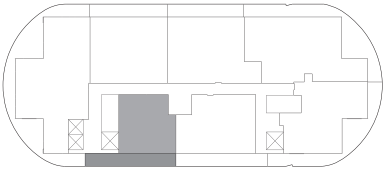
EXTERIOR 325 SF / 30.1 M<sup>2</sup>


TOTAL 1,240 SF / 115.1 M<sup>2</sup>

TERRACE A: 325 SF / 30.1 M<sup>2</sup>

TERRACE B: 325 SF / 30.1 M<sup>2</sup>

TERRACE C: 327 SF / 30.3 M<sup>2</sup>



 Stated interior square footage is measured to the exterior face of exterior walls and to the centerline of interior demising walls or to the exterior face of walls adjoining corridors or other common elements or shared facilities without excluding areas that may be occupied by columns or other structural components. This method of measurement varies from, and is larger than, the dimensions that would be determined by using the description and the definition of the Unit set forth in the Declaration (which generally only includes the interior airspace between the perimeter walls and excludes structural components). For reference, the area of the unit, determined in accordance with the unit boundaries set forth in the Declaration is set forth in Exhibit "3" to the Declaration. All dimensions are approximate and may vary with actual construction. Note that measurements of rooms set forth on this floor plan are generally taken at the greatest points of each given room (as if the room were a perfect rectangle), without regard for any cutouts or irregularities. Accordingly, the area of the actual room will typically be smaller than the product obtained by multiplying the stated length times width. All floor plans and development plans are subject to change. The Developer expressly reserves the right to make modifications, revisions, and changes it deems desirable in its sole and absolute discretion. All depictions of furnishings, appliances, built-ins, counters, soffits, floor coverings, lighting, landscaping and other matters of detail, including, without limitation, items of finish and decoration, are conceptual only and are not necessarily included in each Unit. Consult your prospectus and Purchase Agreement.



SKY

RESIDENCE

07

FLOORS 24 - 30

- 1 BEDROOM
- DEN
- 2 BATHS
- PRIVATE TERRACE

INTERIOR 915 SF / 85 M<sup>2</sup>

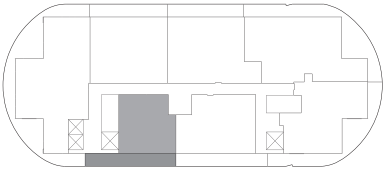
EXTERIOR 325 SF / 30.1 M<sup>2</sup>

TOTAL 1,240 SF / 115.1 M<sup>2</sup>

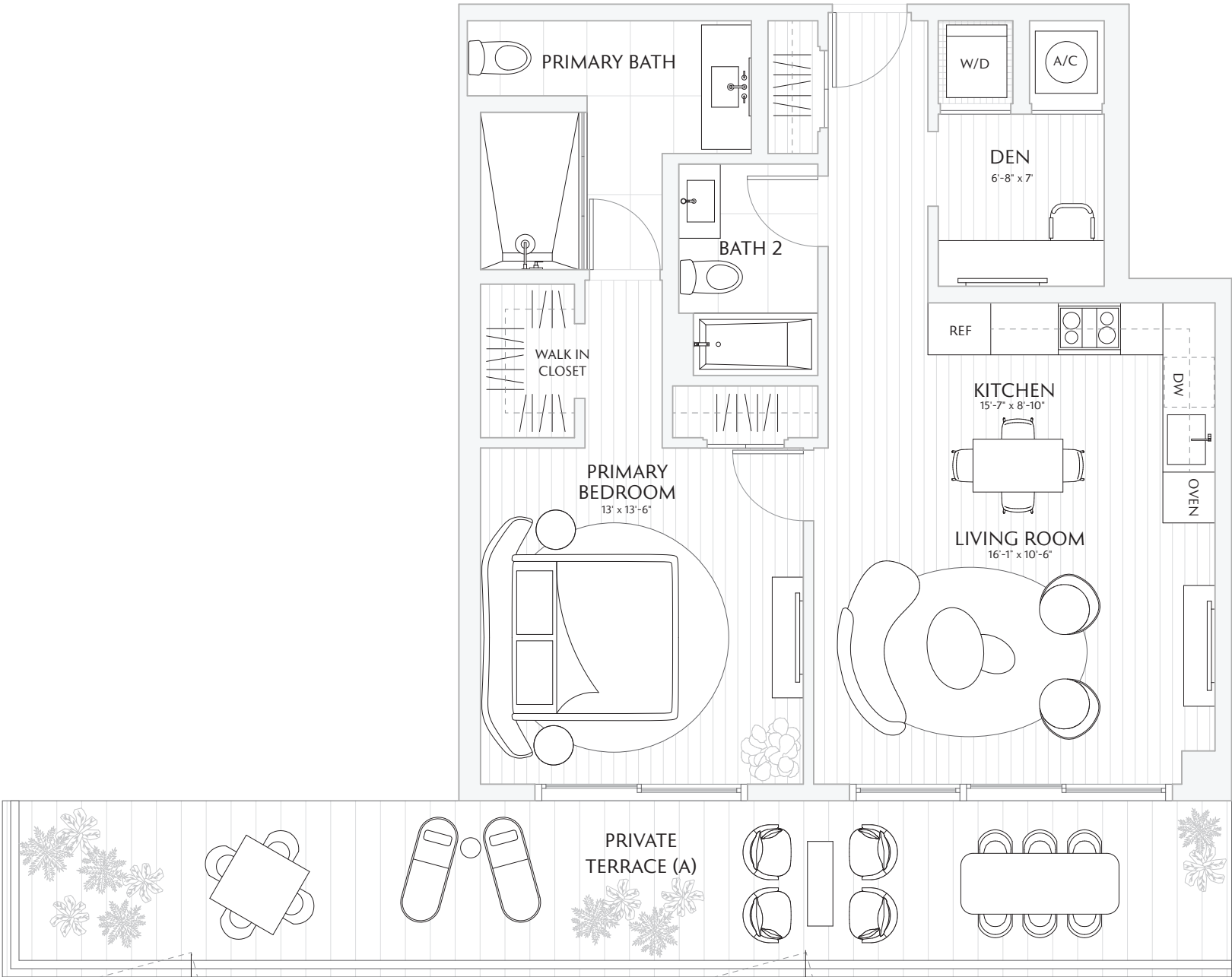
TERRACE A: 325 SF / 30.1 M<sup>2</sup>

TERRACE B: 325 SF / 30.1 M<sup>2</sup>

TERRACE C: 327 SF / 30.3 M<sup>2</sup>




Downtown Skyline  
& Water



TERRACE (C)

TERRACE (B)

 Stated interior square footage is measured to the exterior face of exterior walls and to the centerline of interior demising walls or to the exterior face of walls adjoining corridors or other common elements or shared facilities without excluding areas that may be occupied by columns or other structural components. This method of measurement varies from, and is larger than, the dimensions that would be determined by using the description and the definition of the Unit set forth in the Declaration (which generally only includes the interior airspace between the perimeter walls and excludes structural components). For reference, the area of the unit, determined in accordance with the unit boundaries set forth in the Declaration is set forth in Exhibit "3" to the Declaration. All dimensions are approximate and may vary with actual construction. Note that measurements of rooms set forth on this floor plan are generally taken at the greatest points of each given room (as if the room were a perfect rectangle), without regard for any cutouts or irregularities. Accordingly, the area of the actual room will typically be smaller than the product obtained by multiplying the stated length times width. All floor plans and development plans are subject to change. The Developer expressly reserves the right to make modifications, revisions, and changes it deems desirable in its sole and absolute discretion. All depictions of furnishings, appliances, built-ins, counters, soffits, floor coverings, lighting, landscaping and other matters of detail, including, without limitation, items of finish and decoration, are conceptual only and are not necessarily included in each Unit. Consult your prospectus and Purchase Agreement.