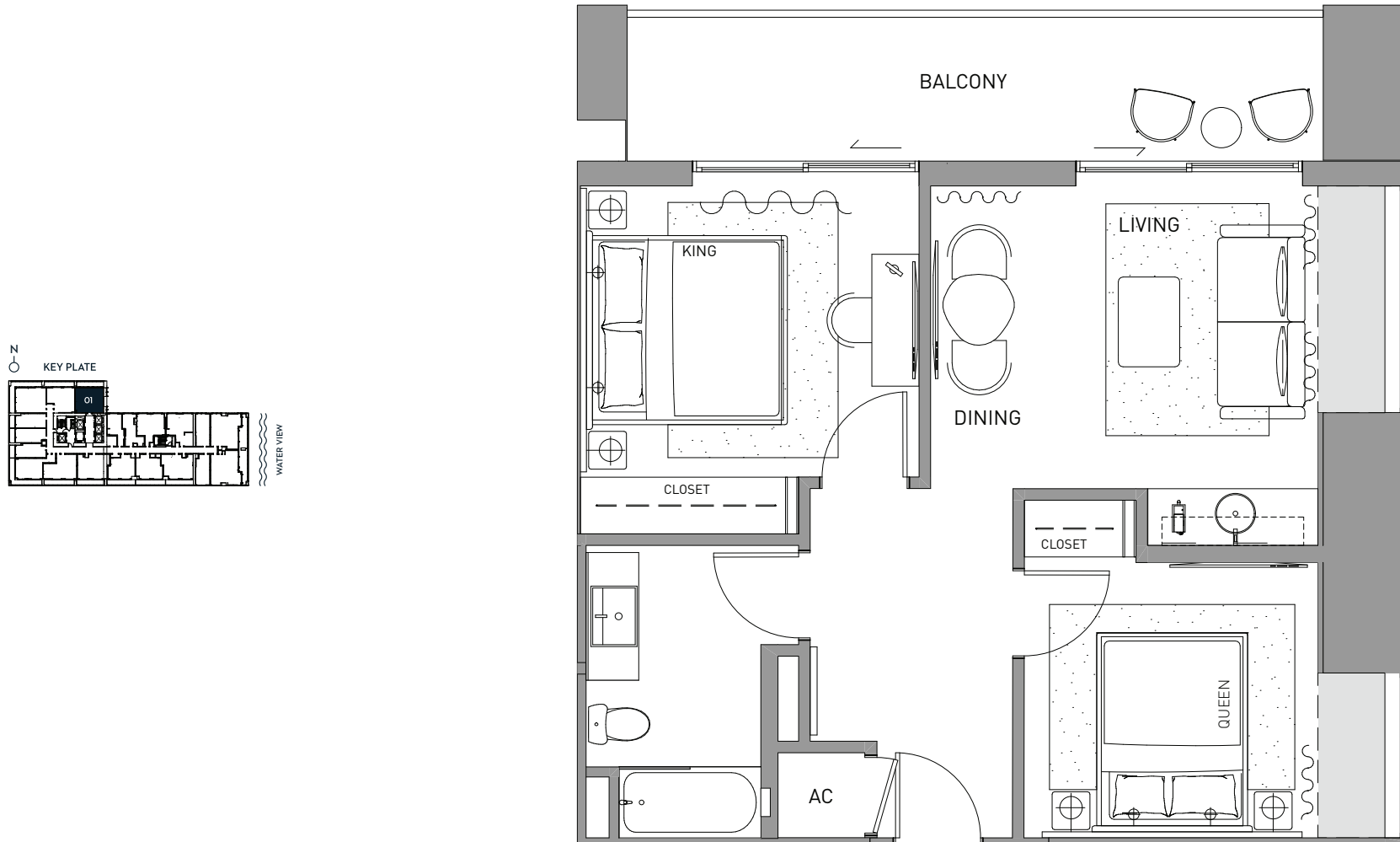


2 BEDROOM 1 BATHROOM + BALCONY

LINE
01 FLOOR
16-23

INTERIOR	730 SF	68 M ²
BALCONY	159 SF	15 M ²
TOTAL	889 SF	83 M ²



DEVELOPED BY
SIXTH STREET
MIAMI PARTNERS LLC



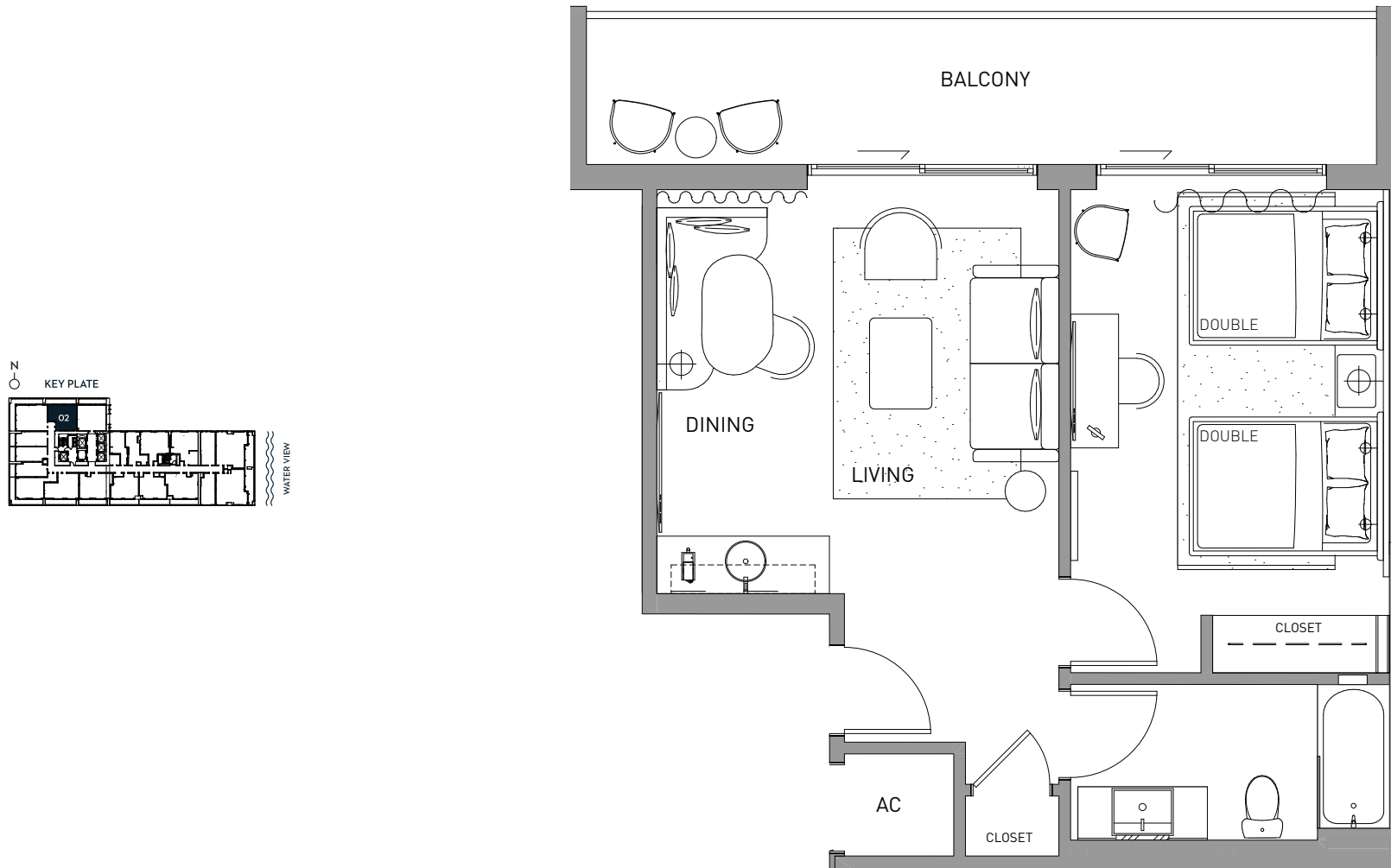
ORAL REPRESENTATIONS CANNOT BE RELIED UPON AS CORRECTLY STATING THE REPRESENTATIONS OF THE DEVELOPER. FOR CORRECT REPRESENTATIONS, MAKE REFERENCE TO THIS BROCHURE AND TO THE DOCUMENTS REQUIRED BY SECTION 718.503, FLORIDA STATUTES, TO BE FURNISHED BY A DEVELOPER TO A BUYER OR LESSEE. THIS IS NOT INTENDED TO BE AN OFFER TO SELL, OR SOLICITATION TO BUY, CONDOMINIUM UNITS TO RESIDENTS OF ANY JURISDICTION WHERE PROHIBITED BY LAW, AND YOUR ELIGIBILITY FOR PURCHASE WILL DEPEND UPON YOUR STATE OF RESIDENCY. THE OFFERING IS MADE ONLY BY THE PROSPECTUS FOR THE CONDOMINIUM AND NO STATEMENT SHOULD BE RELIED UPON IF NOT MADE IN THE PROSPECTUS. STATED INTERIOR SQUARE FOOTAGE IS MEASURED TO THE EXTERIOR FACE OF EXTERIOR WALLS AND TO THE CENTERLINE OF INTERIOR DEMISING WALLS OR TO THE EXTERIOR FACE OF WALLS ADJOINING CORRIDORS OR OTHER COMMON ELEMENTS OR SHARED FACILITIES WITHOUT EXCLUDING AREAS THAT MAY BE OCCUPIED BY COLUMNS OR OTHER STRUCTURAL COMPONENTS. THIS METHOD OF MEASUREMENT VARIES FROM, AND IS LARGER THAN, THE DIMENSIONS THAT WOULD BE DETERMINED BY USING THE DESCRIPTION AND THE DEFINITION OF THE UNIT SET FORTH IN THE DECLARATION (WHICH GENERALLY ONLY INCLUDES THE INTERIOR AIRSPACE BETWEEN THE PERIMETER WALLS AND EXCLUDES STRUCTURAL COMPONENTS). FOR REFERENCE, THE AREA OF THE UNIT, DETERMINED IN ACCORDANCE WITH THE UNIT BOUNDARIES SET FORTH IN THE DECLARATION IS SET FORTH IN EXHIBIT 3 TO THE DECLARATION. ALL DIMENSIONS ARE APPROXIMATE AND MAY VARY WITH ACTUAL CONSTRUCTION.

1 BEDROOM 1 BATHROOM + BALCONY

LINE
02

FLOOR
16-23

INTERIOR	594 SF	55 M ²
BALCONY	164 SF	15 M ²
TOTAL	758 SF	73 M ²



DEVELOPED BY
SIXTH STREET
MIAMI PARTNERS LLC

ORAL REPRESENTATIONS CANNOT BE RELIED UPON AS CORRECTLY STATING THE REPRESENTATIONS OF THE DEVELOPER. FOR CORRECT REPRESENTATIONS, MAKE REFERENCE TO THIS BROCHURE AND TO THE DOCUMENTS REQUIRED BY SECTION 718.503, FLORIDA STATUTES, TO BE FURNISHED BY A DEVELOPER TO A BUYER OR LESSEE. THIS IS NOT INTENDED TO BE AN OFFER TO SELL, OR SOLICITATION TO BUY, CONDOMINIUM UNITS TO RESIDENTS OF ANY JURISDICTION WHERE PROHIBITED BY LAW, AND YOUR ELIGIBILITY FOR PURCHASE WILL DEPEND UPON YOUR STATE OF RESIDENCY. THE OFFERING IS MADE ONLY BY THE PROSPECTUS FOR THE CONDOMINIUM AND NO STATEMENT SHOULD BE RELIED UPON IF NOT MADE IN THE PROSPECTUS. STATED INTERIOR SQUARE FOOTAGE IS MEASURED TO THE EXTERIOR FACE OF EXTERIOR WALLS AND TO THE CENTERLINE OF INTERIOR DEMISING WALLS OR TO THE EXTERIOR FACE OF WALLS ADJOINING CORRIDORS OR OTHER COMMON ELEMENTS OR SHARED FACILITIES WITHOUT EXCLUDING AREAS THAT MAY BE OCCUPIED BY COLUMNS OR OTHER STRUCTURAL COMPONENTS. THIS METHOD OF MEASUREMENT VARIES FROM, AND IS LARGER THAN, THE DIMENSIONS THAT WOULD BE DETERMINED BY USING THE DESCRIPTION AND THE DEFINITION OF THE UNIT SET FORTH IN THE DECLARATION (WHICH GENERALLY ONLY INCLUDES THE INTERIOR AIRSPACE BETWEEN THE PERIMETER WALLS AND EXCLUDES STRUCTURAL COMPONENTS). FOR REFERENCE, THE AREA OF THE UNIT, DETERMINED IN ACCORDANCE WITH THE UNIT BOUNDARIES SET FORTH IN THE DECLARATION IS SET FORTH IN EXHIBIT 3 TO THE DECLARATION. ALL DIMENSIONS ARE APPROXIMATE AND MAY VARY WITH ACTUAL CONSTRUCTION.

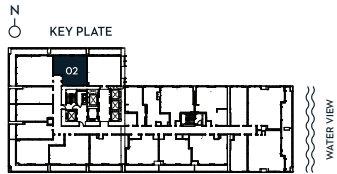
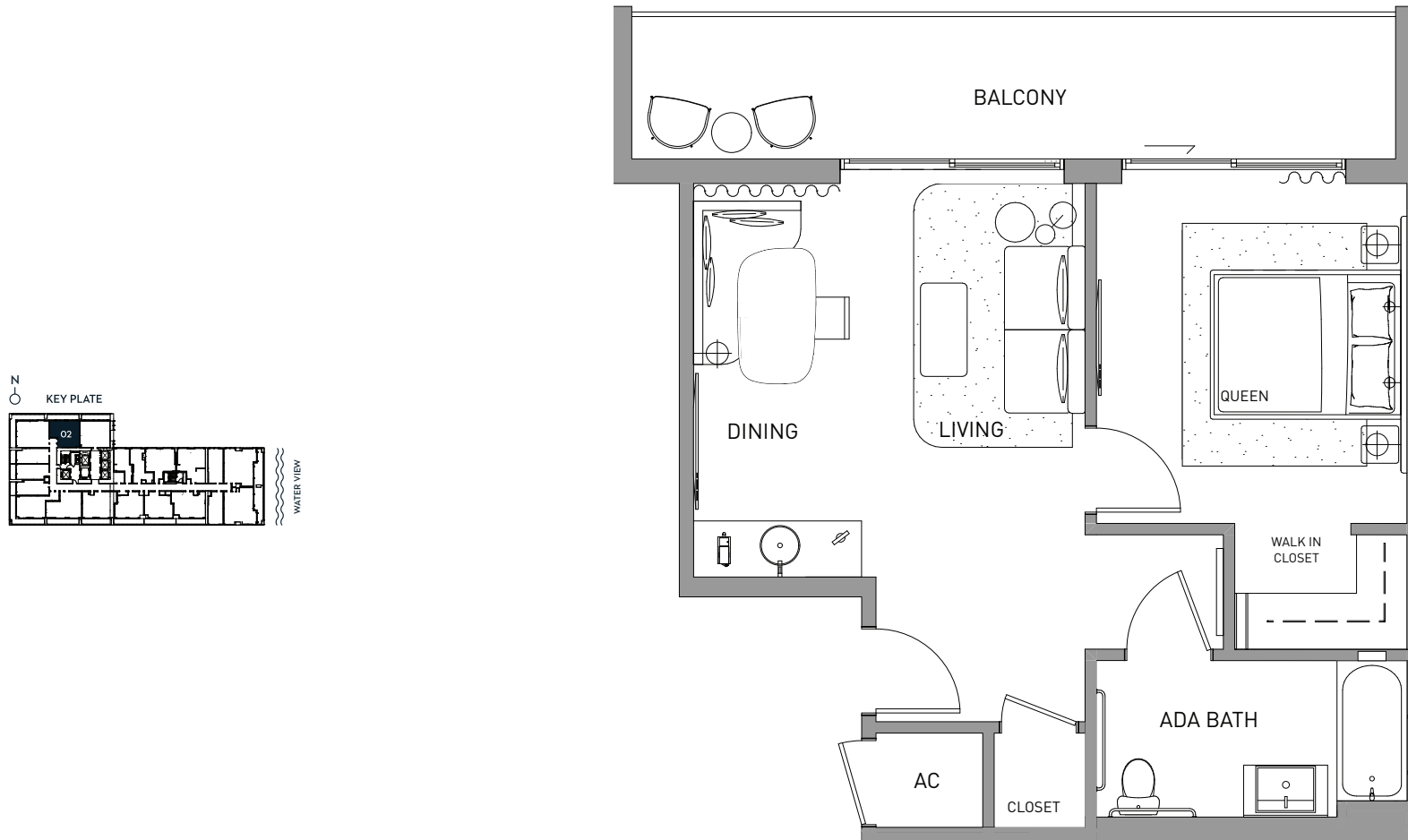


1 BEDROOM 1 BATHROOM + BALCONY

LINE
02
(ADA)

FLOOR
16-23

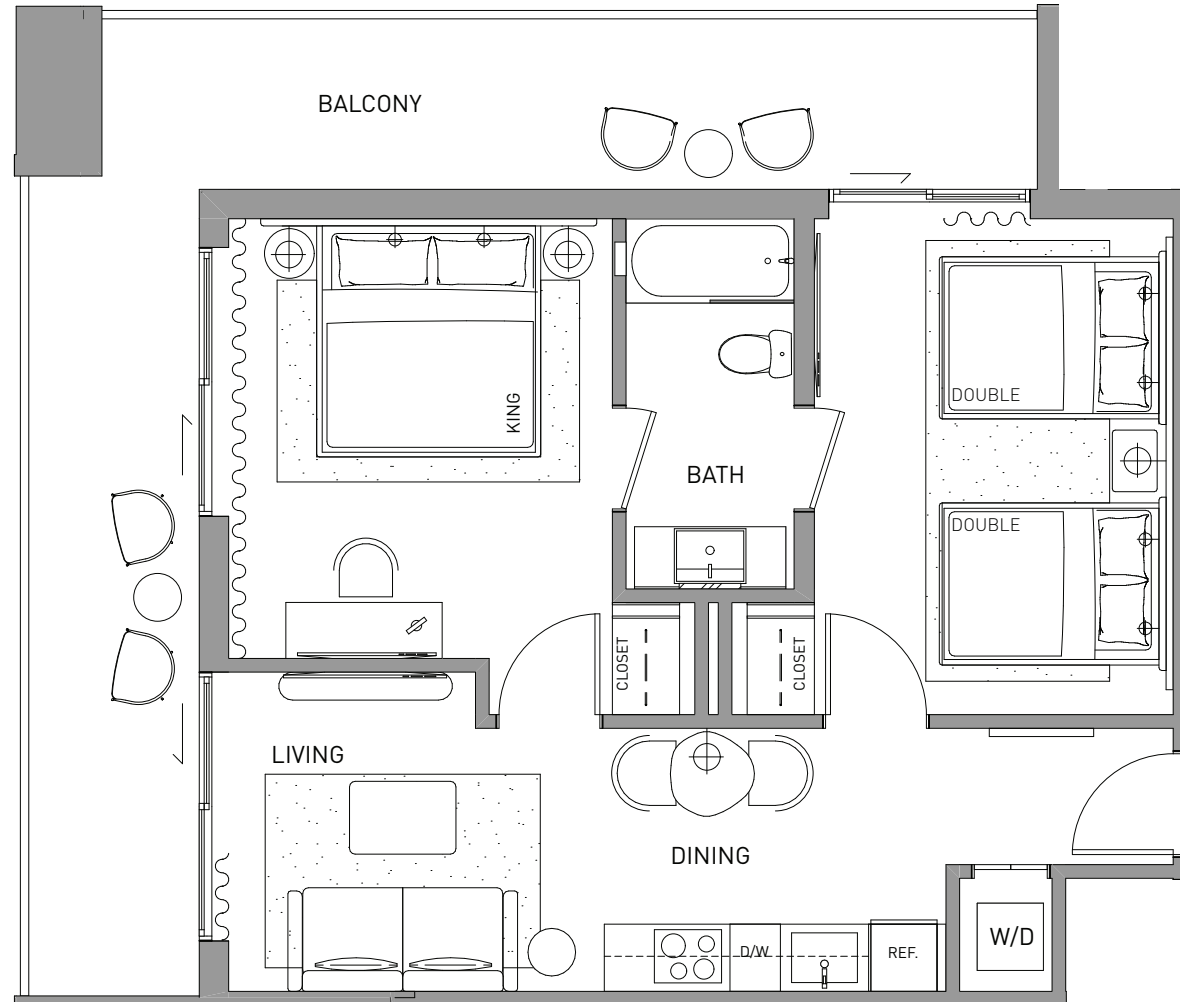
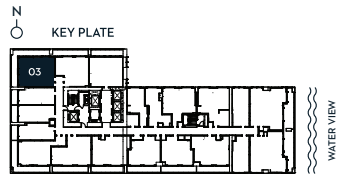
INTERIOR	594 SF	55 M ²
BALCONY	164 SF	15 M ²
TOTAL	758 SF	73 M ²



DEVELOPED BY
SIXTH STREET
MIAMI PARTNERS LLC

ORAL REPRESENTATIONS CANNOT BE RELIED UPON AS CORRECTLY STATING THE REPRESENTATIONS OF THE DEVELOPER. FOR CORRECT REPRESENTATIONS, MAKE REFERENCE TO THIS BROCHURE AND TO THE DOCUMENTS REQUIRED BY SECTION 718.503, FLORIDA STATUTES, TO BE FURNISHED BY A DEVELOPER TO A BUYER OR LESSEE. THIS IS NOT INTENDED TO BE AN OFFER TO SELL, OR SOLICITATION TO BUY, CONDOMINIUM UNITS TO RESIDENTS OF ANY JURISDICTION WHERE PROHIBITED BY LAW, AND YOUR ELIGIBILITY FOR PURCHASE WILL DEPEND UPON YOUR STATE OF RESIDENCY. THE OFFERING IS MADE ONLY BY THE PROSPECTUS FOR THE CONDOMINIUM AND NO STATEMENT SHOULD BE RELIED UPON IF NOT MADE IN THE PROSPECTUS. STATED INTERIOR SQUARE FOOTAGE IS MEASURED TO THE EXTERIOR FACE OF EXTERIOR WALLS AND TO THE CENTERLINE OF INTERIOR DEMISING WALLS OR TO THE EXTERIOR FACE OF WALLS ADJOINING CORRIDORS OR OTHER COMMON ELEMENTS OR SHARED FACILITIES WITHOUT EXCLUDING AREAS THAT MAY BE OCCUPIED BY COLUMNS OR OTHER STRUCTURAL COMPONENTS. THIS METHOD OF MEASUREMENT VARIES FROM, AND IS LARGER THAN, THE DIMENSIONS THAT WOULD BE DETERMINED BY USING THE DESCRIPTION AND THE DEFINITION OF THE UNIT SET FORTH IN THE DECLARATION (WHICH GENERALLY ONLY INCLUDES THE INTERIOR AIRSPACE BETWEEN THE PERIMETER WALLS AND EXCLUDES STRUCTURAL COMPONENTS). FOR REFERENCE, THE AREA OF THE UNIT, DETERMINED IN ACCORDANCE WITH THE UNIT BOUNDARIES SET FORTH IN THE DECLARATION IS SET FORTH IN EXHIBIT 3 TO THE DECLARATION. ALL DIMENSIONS ARE APPROXIMATE AND MAY VARY WITH ACTUAL CONSTRUCTION.

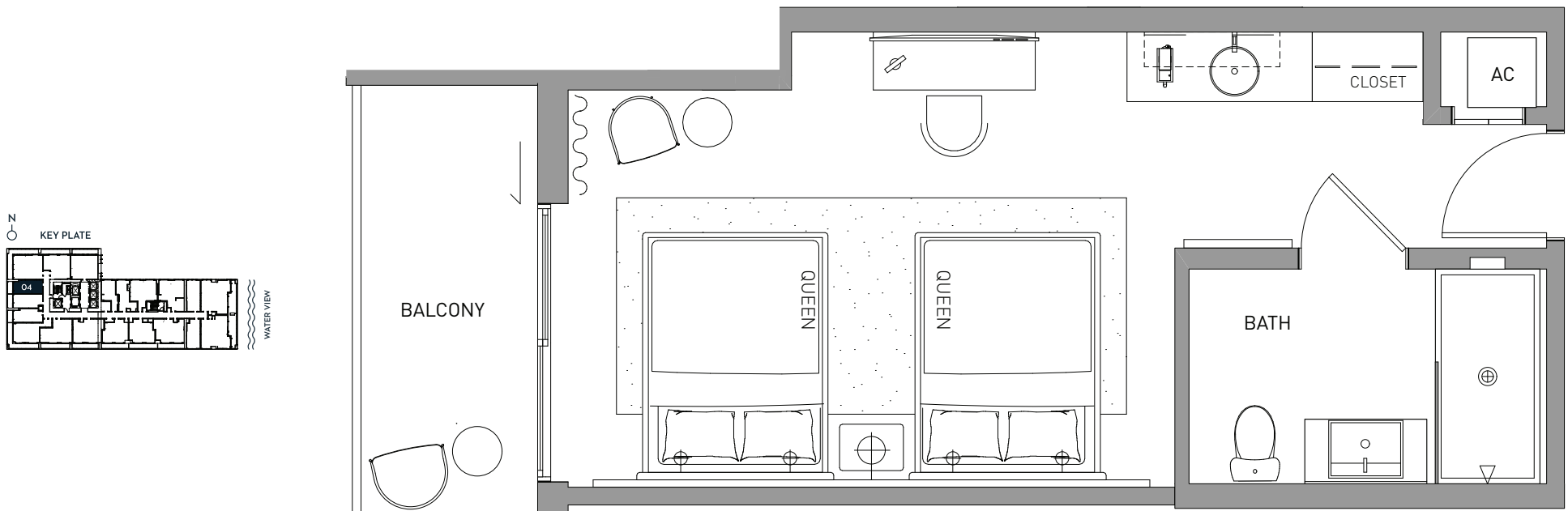




STUDIO 1 BATHROOM + BALCONY

LINE 04 FLOOR 16-23

INTERIOR 398 SF 37 M²
BALCONY 71 SF 7 M²
TOTAL 469 SF 44 M²



DEVELOPED BY
SIXTH STREET
MIAMI PARTNERS LLC



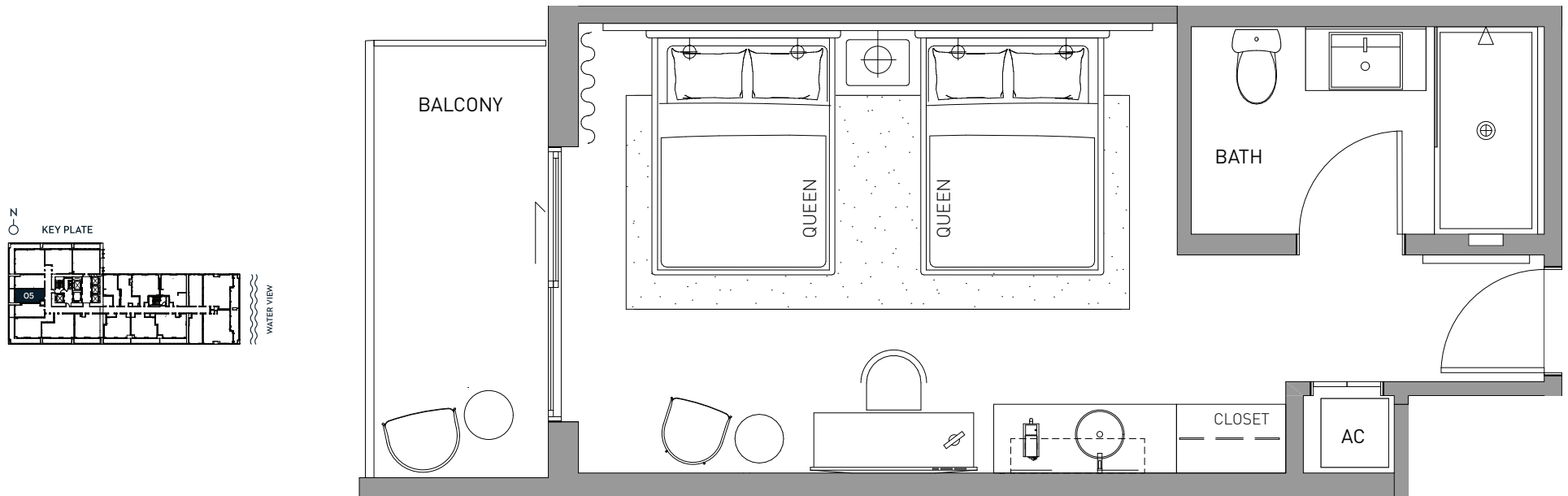
ORAL REPRESENTATIONS CANNOT BE RELIED UPON AS CORRECTLY STATING THE REPRESENTATIONS OF THE DEVELOPER. FOR CORRECT REPRESENTATIONS, MAKE REFERENCE TO THIS BROCHURE AND TO THE DOCUMENTS REQUIRED BY SECTION 718.503, FLORIDA STATUTES, TO BE FURNISHED BY A DEVELOPER TO A BUYER OR LESSEE. THIS IS NOT INTENDED TO BE AN OFFER TO SELL, OR SOLICITATION TO BUY, CONDOMINIUM UNITS TO RESIDENTS OF ANY JURISDICTION WHERE PROHIBITED BY LAW, AND YOUR ELIGIBILITY FOR PURCHASE WILL DEPEND UPON YOUR STATE OF RESIDENCY. THE OFFERING IS MADE ONLY BY THE PROSPECTUS FOR THE CONDOMINIUM AND NO STATEMENT SHOULD BE RELIED UPON IF NOT MADE IN THE PROSPECTUS. STATED INTERIOR SQUARE FOOTAGE IS MEASURED TO THE EXTERIOR FACE OF EXTERIOR WALLS AND TO THE CENTERLINE OF INTERIOR DEMISING WALLS OR TO THE EXTERIOR FACE OF WALLS ADJOINING CORRIDORS OR OTHER COMMON ELEMENTS OR SHARED FACILITIES WITHOUT EXCLUDING AREAS THAT MAY BE OCCUPIED BY COLUMNS OR OTHER STRUCTURAL COMPONENTS. THIS METHOD OF MEASUREMENT VARIES FROM, AND IS LARGER THAN, THE DIMENSIONS THAT WOULD BE DETERMINED BY USING THE DESCRIPTION AND THE DEFINITION OF THE UNIT SET FORTH IN THE DECLARATION (WHICH GENERALLY ONLY INCLUDES THE INTERIOR AIRSPACE BETWEEN THE PERIMETER WALLS AND EXCLUDES STRUCTURAL COMPONENTS). FOR REFERENCE, THE AREA OF THE UNIT, DETERMINED IN ACCORDANCE WITH THE UNIT BOUNDARIES SET FORTH IN THE DECLARATION IS SET FORTH IN EXHIBIT 3 TO THE DECLARATION. ALL DIMENSIONS ARE APPROXIMATE AND MAY VARY WITH ACTUAL CONSTRUCTION.

STUDIO 1 BATHROOM + BALCONY

LINE
05

FLOOR
16-23

INTERIOR 389 SF 36 M²
BALCONY 80 SF 7 M²
TOTAL 469 SF 44 M²



DEVELOPED BY
SIXTH STREET
MIAMI PARTNERS LLC

ORAL REPRESENTATIONS CANNOT BE RELIED UPON AS CORRECTLY STATING THE REPRESENTATIONS OF THE DEVELOPER. FOR CORRECT REPRESENTATIONS, MAKE REFERENCE TO THIS BROCHURE AND TO THE DOCUMENTS REQUIRED BY SECTION 718.503, FLORIDA STATUTES, TO BE FURNISHED BY A DEVELOPER TO A BUYER OR LESSEE. THIS IS NOT INTENDED TO BE AN OFFER TO SELL, OR SOLICITATION TO BUY, CONDOMINIUM UNITS TO RESIDENTS OF ANY JURISDICTION WHERE PROHIBITED BY LAW, AND YOUR ELIGIBILITY FOR PURCHASE WILL DEPEND UPON YOUR STATE OF RESIDENCY. THE OFFERING IS MADE ONLY BY THE PROSPECTUS FOR THE CONDOMINIUM AND NO STATEMENT SHOULD BE RELIED UPON IF NOT MADE IN THE PROSPECTUS. STATED INTERIOR SQUARE FOOTAGE IS MEASURED TO THE EXTERIOR FACE OF EXTERIOR WALLS AND TO THE CENTERLINE OF INTERIOR DEMISING WALLS OR TO THE EXTERIOR FACE OF WALLS ADJOINING CORRIDORS OR OTHER COMMON ELEMENTS OR SHARED FACILITIES WITHOUT EXCLUDING AREAS THAT MAY BE OCCUPIED BY COLUMNS OR OTHER STRUCTURAL COMPONENTS. THIS METHOD OF MEASUREMENT VARIES FROM, AND IS LARGER THAN, THE DIMENSIONS THAT WOULD BE DETERMINED BY USING THE DESCRIPTION AND THE DEFINITION OF THE UNIT SET FORTH IN THE DECLARATION (WHICH GENERALLY ONLY INCLUDES THE INTERIOR AIRSPACE BETWEEN THE PERIMETER WALLS AND EXCLUDES STRUCTURAL COMPONENTS). FOR REFERENCE, THE AREA OF THE UNIT, DETERMINED IN ACCORDANCE WITH THE UNIT BOUNDARIES SET FORTH IN THE DECLARATION IS SET FORTH IN EXHIBIT 3 TO THE DECLARATION. ALL DIMENSIONS ARE APPROXIMATE AND MAY VARY WITH ACTUAL CONSTRUCTION.

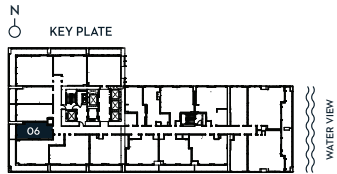
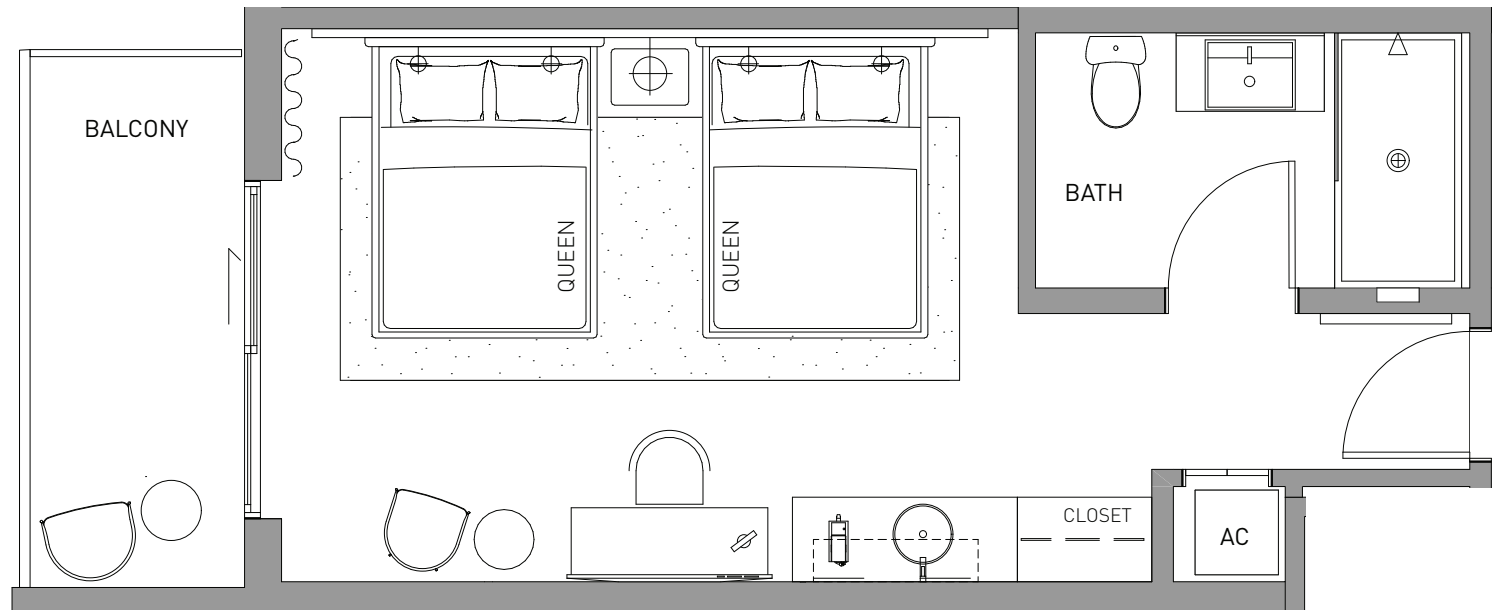


STUDIO 1 BATHROOM + BALCONY

LINE
06

FLOOR
16-23

INTERIOR 389 SF 36 M²
BALCONY 71 SF 7 M²
TOTAL 460 SF 43 M²



DEVELOPED BY
SIXTH STREET
MIAMI PARTNERS LLC

ORAL REPRESENTATIONS CANNOT BE RELIED UPON AS CORRECTLY STATING THE REPRESENTATIONS OF THE DEVELOPER. FOR CORRECT REPRESENTATIONS, MAKE REFERENCE TO THIS BROCHURE AND TO THE DOCUMENTS REQUIRED BY SECTION 718.503, FLORIDA STATUTES, TO BE FURNISHED BY A DEVELOPER TO A BUYER OR LESSEE. THIS IS NOT INTENDED TO BE AN OFFER TO SELL, OR SOLICITATION TO BUY, CONDOMINIUM UNITS TO RESIDENTS OF ANY JURISDICTION WHERE PROHIBITED BY LAW, AND YOUR ELIGIBILITY FOR PURCHASE WILL DEPEND UPON YOUR STATE OF RESIDENCY. THE OFFERING IS MADE ONLY BY THE PROSPECTUS FOR THE CONDOMINIUM AND NO STATEMENT SHOULD BE RELIED UPON IF NOT MADE IN THE PROSPECTUS. STATED INTERIOR SQUARE FOOTAGE IS MEASURED TO THE EXTERIOR FACE OF EXTERIOR WALLS AND TO THE CENTERLINE OF INTERIOR DEMISING WALLS OR TO THE EXTERIOR FACE OF WALLS ADJOINING CORRIDORS OR OTHER COMMON ELEMENTS OR SHARED FACILITIES WITHOUT EXCLUDING AREAS THAT MAY BE OCCUPIED BY COLUMNS OR OTHER STRUCTURAL COMPONENTS. THIS METHOD OF MEASUREMENT VARIES FROM, AND IS LARGER THAN, THE DIMENSIONS THAT WOULD BE DETERMINED BY USING THE DESCRIPTION AND THE DEFINITION OF THE UNIT SET FORTH IN THE DECLARATION (WHICH GENERALLY ONLY INCLUDES THE INTERIOR AIRSPACE BETWEEN THE PERIMETER WALLS AND EXCLUDES STRUCTURAL COMPONENTS). FOR REFERENCE, THE AREA OF THE UNIT, DETERMINED IN ACCORDANCE WITH THE UNIT BOUNDARIES SET FORTH IN THE DECLARATION IS SET FORTH IN EXHIBIT 3 TO THE DECLARATION. ALL DIMENSIONS ARE APPROXIMATE AND MAY VARY WITH ACTUAL CONSTRUCTION.

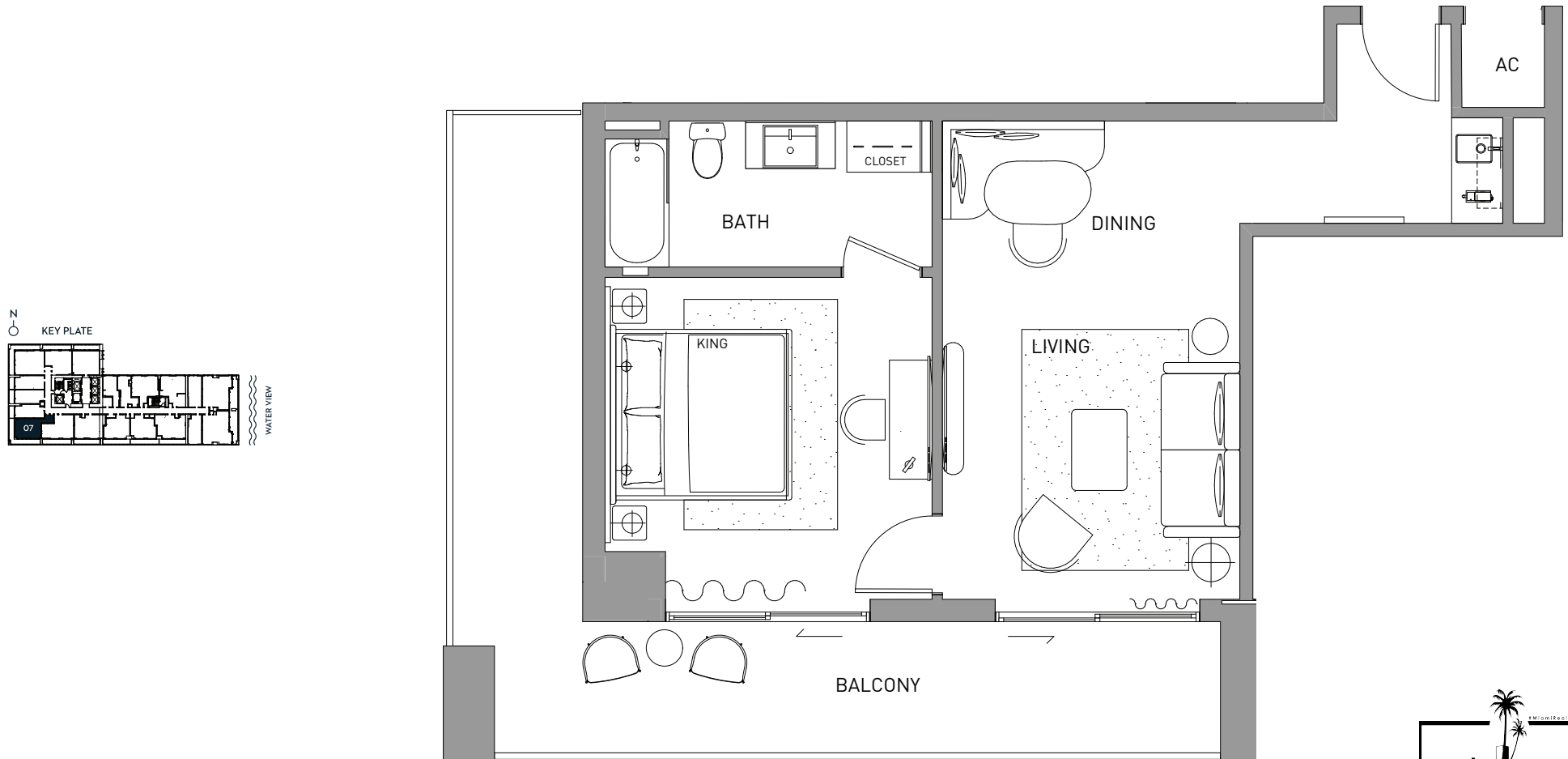


1 BEDROOM 1 BATHROOM + BALCONY

LINE
07

FLOOR
16-23

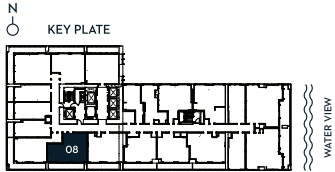
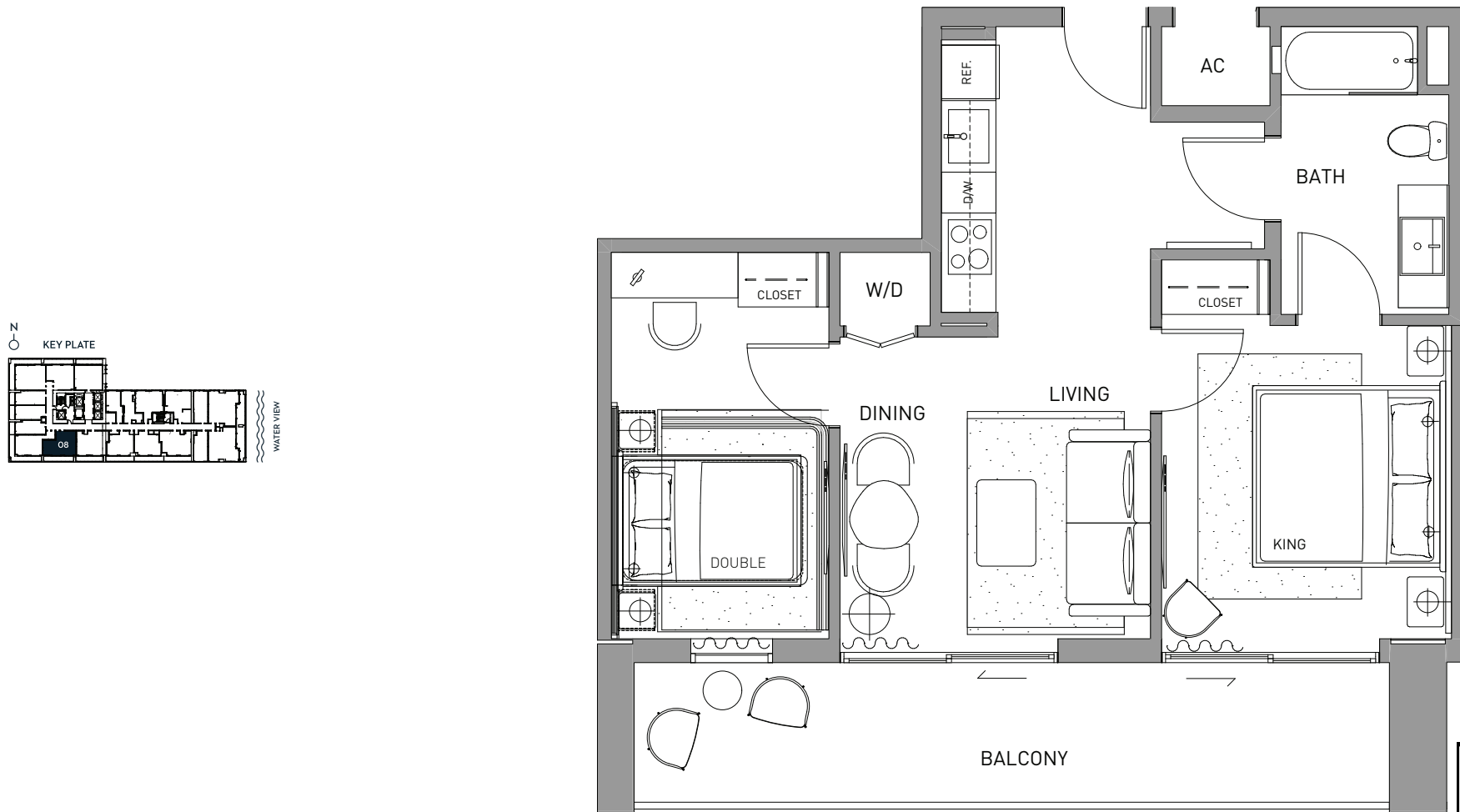
INTERIOR 604 SF 56 M²
BALCONY 282 SF 26 M²
TOTAL 886 SF 82 M²

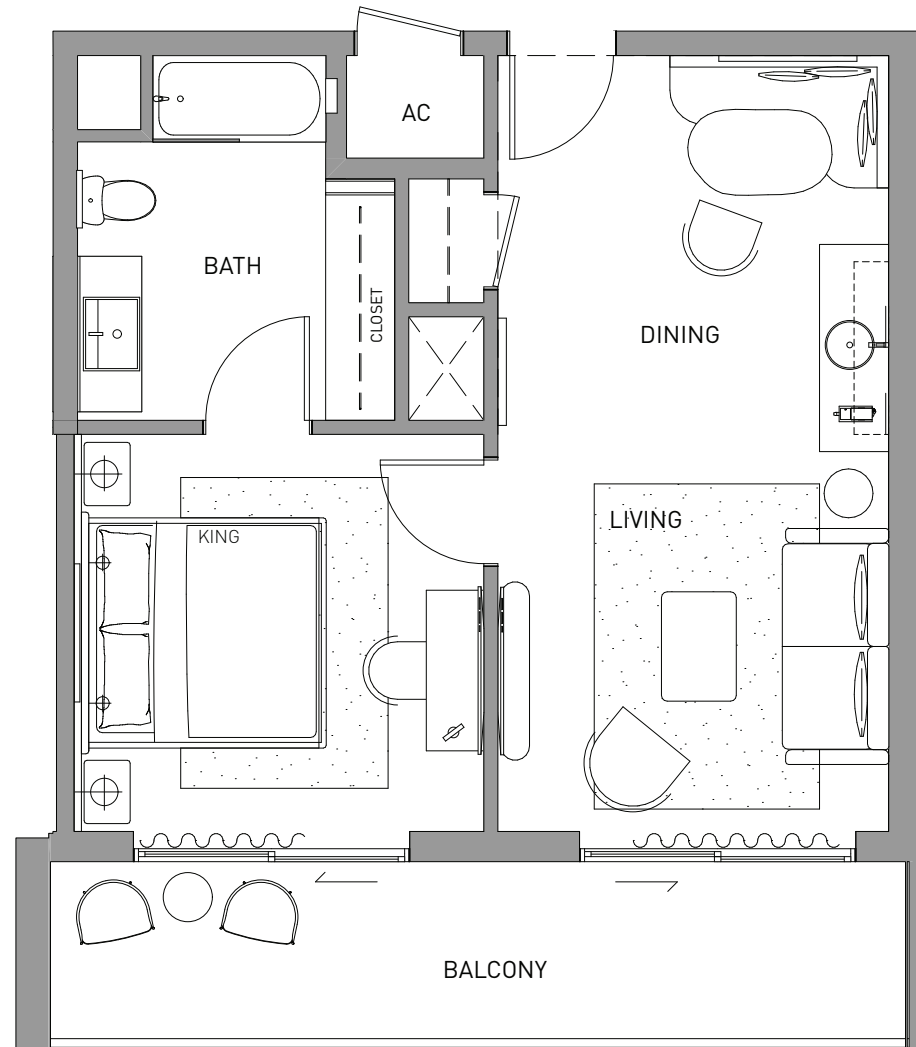
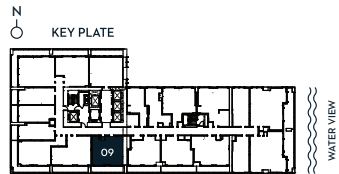


DEVELOPED BY
SIXTH STREET
MIAMI PARTNERS LLC



ORAL REPRESENTATIONS CANNOT BE RELIED UPON AS CORRECTLY STATING THE REPRESENTATIONS OF THE DEVELOPER. FOR CORRECT REPRESENTATIONS, MAKE REFERENCE TO THIS BROCHURE AND TO THE DOCUMENTS REQUIRED BY SECTION 718.503, FLORIDA STATUTES, TO BE FURNISHED BY A DEVELOPER TO A BUYER OR LESSEE. THIS IS NOT INTENDED TO BE AN OFFER TO SELL, OR SOLICITATION TO BUY, CONDOMINIUM UNITS TO RESIDENTS OF ANY JURISDICTION WHERE PROHIBITED BY LAW, AND YOUR ELIGIBILITY FOR PURCHASE WILL DEPEND UPON YOUR STATE OF RESIDENCY. THE OFFERING IS MADE ONLY BY THE PROSPECTUS FOR THE CONDOMINIUM AND NO STATEMENT SHOULD BE RELIED UPON IF NOT MADE IN THE PROSPECTUS. STATED INTERIOR SQUARE FOOTAGE IS MEASURED TO THE EXTERIOR FACE OF EXTERIOR WALLS AND TO THE CENTERLINE OF INTERIOR DEMISING WALLS OR TO THE EXTERIOR FACE OF WALLS ADJOINING CORRIDORS OR OTHER COMMON ELEMENTS OR SHARED FACILITIES WITHOUT EXCLUDING AREAS THAT MAY BE OCCUPIED BY COLUMNS OR OTHER STRUCTURAL COMPONENTS. THIS METHOD OF MEASUREMENT VARIES FROM, AND IS LARGER THAN, THE DIMENSIONS THAT WOULD BE DETERMINED BY USING THE DESCRIPTION AND THE DEFINITION OF THE UNIT SET FORTH IN THE DECLARATION (WHICH GENERALLY ONLY INCLUDES THE INTERIOR AIRSPACE BETWEEN THE PERIMETER WALLS AND EXCLUDES STRUCTURAL COMPONENTS). FOR REFERENCE, THE AREA OF THE UNIT, DETERMINED IN ACCORDANCE WITH THE UNIT BOUNDARIES SET FORTH IN THE DECLARATION IS SET FORTH IN EXHIBIT 3 TO THE DECLARATION. ALL DIMENSIONS ARE APPROXIMATE AND MAY VARY WITH ACTUAL CONSTRUCTION.



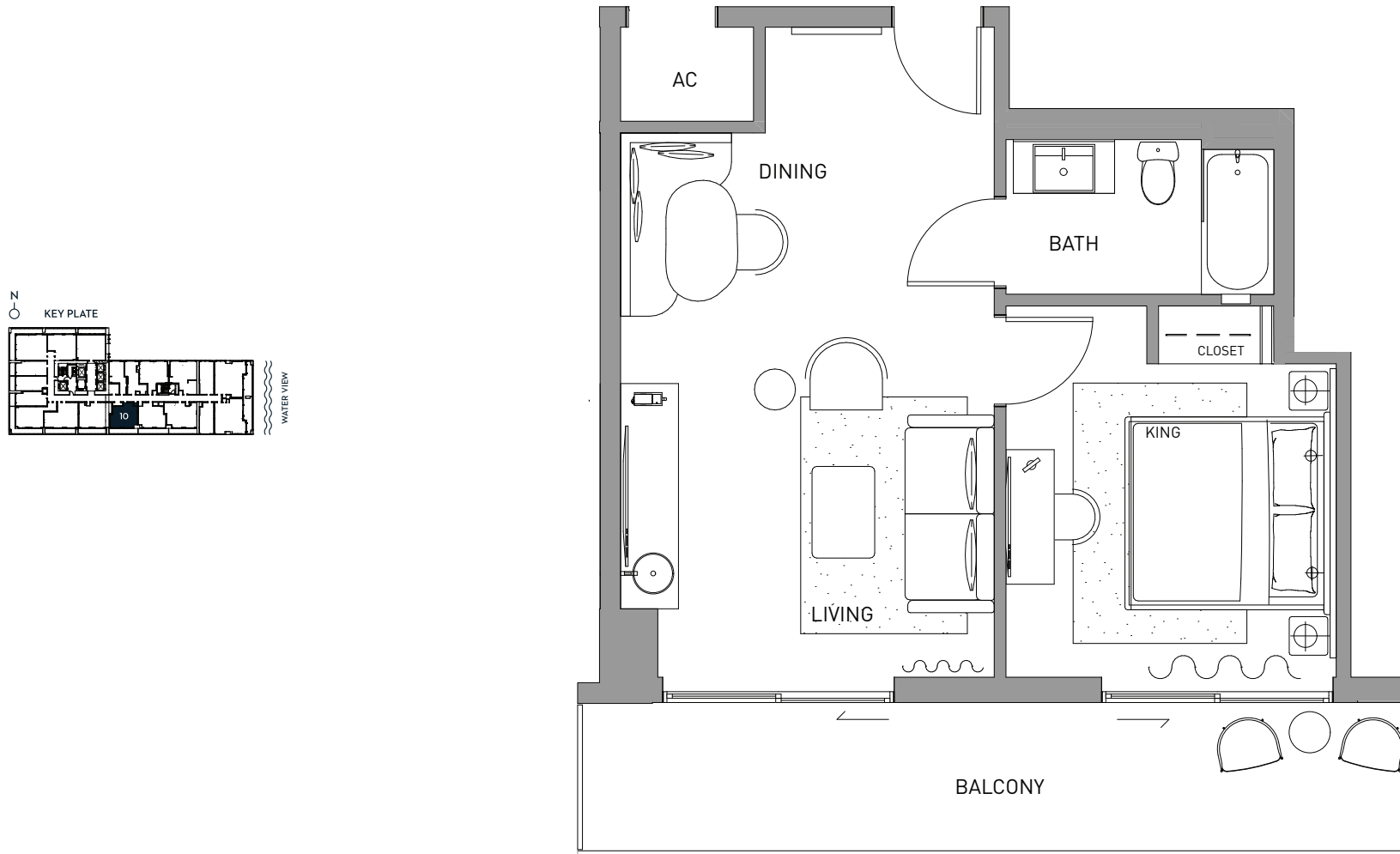


1 BEDROOM 1 BATHROOM

LINE
10

FLOOR
16-23

INTERIOR 621 SF 58 M²
BALCONY 152 SF 14 M²
TOTAL 773 SF 72 M²



DEVELOPED BY
SIXTH STREET
MIAMI PARTNERS LLC



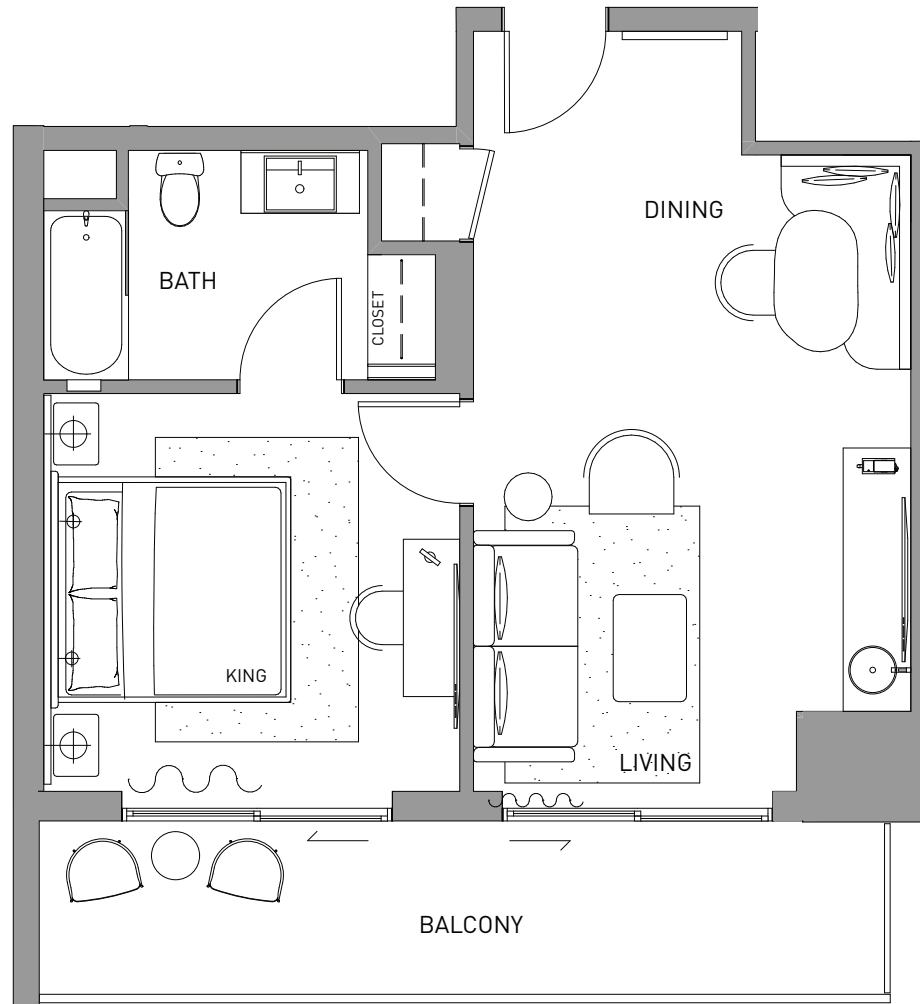
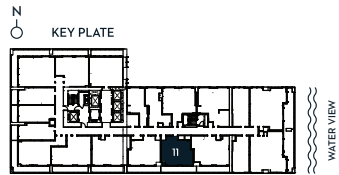
ORAL REPRESENTATIONS CANNOT BE RELIED UPON AS CORRECTLY STATING THE REPRESENTATIONS OF THE DEVELOPER. FOR CORRECT REPRESENTATIONS, MAKE REFERENCE TO THIS BROCHURE AND TO THE DOCUMENTS REQUIRED BY SECTION 718.503, FLORIDA STATUTES, TO BE FURNISHED BY A DEVELOPER TO A BUYER OR LESSEE. THIS IS NOT INTENDED TO BE AN OFFER TO SELL OR SOLICITATION TO BUY, CONDOMINIUM UNITS TO RESIDENTS OF ANY JURISDICTION WHERE PROHIBITED BY LAW, AND YOUR ELIGIBILITY FOR PURCHASE WILL DEPEND UPON YOUR STATE OF RESIDENCY. THE OFFERING IS MADE ONLY BY THE PROSPECTUS FOR THE CONDOMINIUM AND NO STATEMENT SHOULD BE RELIED UPON IF NOT MADE IN THE PROSPECTUS. STATED INTERIOR SQUARE FOOTAGE IS MEASURED TO THE EXTERIOR FACE OF EXTERIOR WALLS AND TO THE CENTERLINE OF INTERIOR DEMISING WALLS OR TO THE EXTERIOR FACE OF WALLS ADJOINING CORRIDORS OR OTHER COMMON ELEMENTS OR SHARED FACILITIES WITHOUT EXCLUDING AREAS THAT MAY BE OCCUPIED BY COLUMNS OR OTHER STRUCTURAL COMPONENTS. THIS METHOD OF MEASUREMENT VARIES FROM, AND IS LARGER THAN, THE DIMENSIONS THAT WOULD BE DETERMINED BY USING THE DESCRIPTION AND THE DEFINITION OF THE UNIT SET FORTH IN THE DECLARATION (WHICH GENERALLY ONLY INCLUDES THE INTERIOR AIRSPACE BETWEEN THE PERIMETER WALLS AND EXCLUDES STRUCTURAL COMPONENTS). FOR REFERENCE, THE AREA OF THE UNIT, DETERMINED IN ACCORDANCE WITH THE UNIT BOUNDARIES SET FORTH IN THE DECLARATION IS SET FORTH IN EXHIBIT 3 TO THE DECLARATION. ALL DIMENSIONS ARE APPROXIMATE AND MAY VARY WITH ACTUAL CONSTRUCTION.

1 BEDROOM 1 BATHROOM

LINE
11

FLOOR
16-23

INTERIOR	545 SF	51 M ²
BALCONY	152 SF	14 M ²
TOTAL	697 SF	65 M ²



DEVELOPED BY
SIXTH STREET
MIAMI PARTNERS LLC

ORAL REPRESENTATIONS CANNOT BE RELIED UPON AS CORRECTLY STATING THE REPRESENTATIONS OF THE DEVELOPER. FOR CORRECT REPRESENTATIONS, MAKE REFERENCE TO THIS BROCHURE AND TO THE DOCUMENTS REQUIRED BY SECTION 718.503, FLORIDA STATUTES, TO BE FURNISHED BY A DEVELOPER TO A BUYER OR LESSEE. THIS IS NOT INTENDED TO BE AN OFFER TO SELL, OR SOLICITATION TO BUY, CONDOMINIUM UNITS TO RESIDENTS OF ANY JURISDICTION WHERE PROHIBITED BY LAW, AND YOUR ELIGIBILITY FOR PURCHASE WILL DEPEND UPON YOUR STATE OF RESIDENCY. THE OFFERING IS MADE ONLY BY THE PROSPECTUS FOR THE CONDOMINIUM AND NO STATEMENT SHOULD BE RELIED UPON IF NOT MADE IN THE PROSPECTUS. STATED INTERIOR SQUARE FOOTAGE IS MEASURED TO THE EXTERIOR FACE OF EXTERIOR WALLS AND TO THE CENTERLINE OF INTERIOR DEMISING WALLS OR TO THE EXTERIOR FACE OF WALLS ADJOINING CORRIDORS OR OTHER COMMON ELEMENTS OR SHARED FACILITIES WITHOUT EXCLUDING AREAS THAT MAY BE OCCUPIED BY COLUMNS OR OTHER STRUCTURAL COMPONENTS. THIS METHOD OF MEASUREMENT VARIES FROM, AND IS LARGER THAN, THE DIMENSIONS THAT WOULD BE DETERMINED BY USING THE DESCRIPTION AND THE DEFINITION OF THE UNIT SET FORTH IN THE DECLARATION (WHICH GENERALLY ONLY INCLUDES THE INTERIOR AIRSPACE BETWEEN THE PERIMETER WALLS AND EXCLUDES STRUCTURAL COMPONENTS). FOR REFERENCE, THE AREA OF THE UNIT, DETERMINED IN ACCORDANCE WITH THE UNIT BOUNDARIES SET FORTH IN THE DECLARATION IS SET FORTH IN EXHIBIT 3 TO THE DECLARATION. ALL DIMENSIONS ARE APPROXIMATE AND MAY VARY WITH ACTUAL CONSTRUCTION.

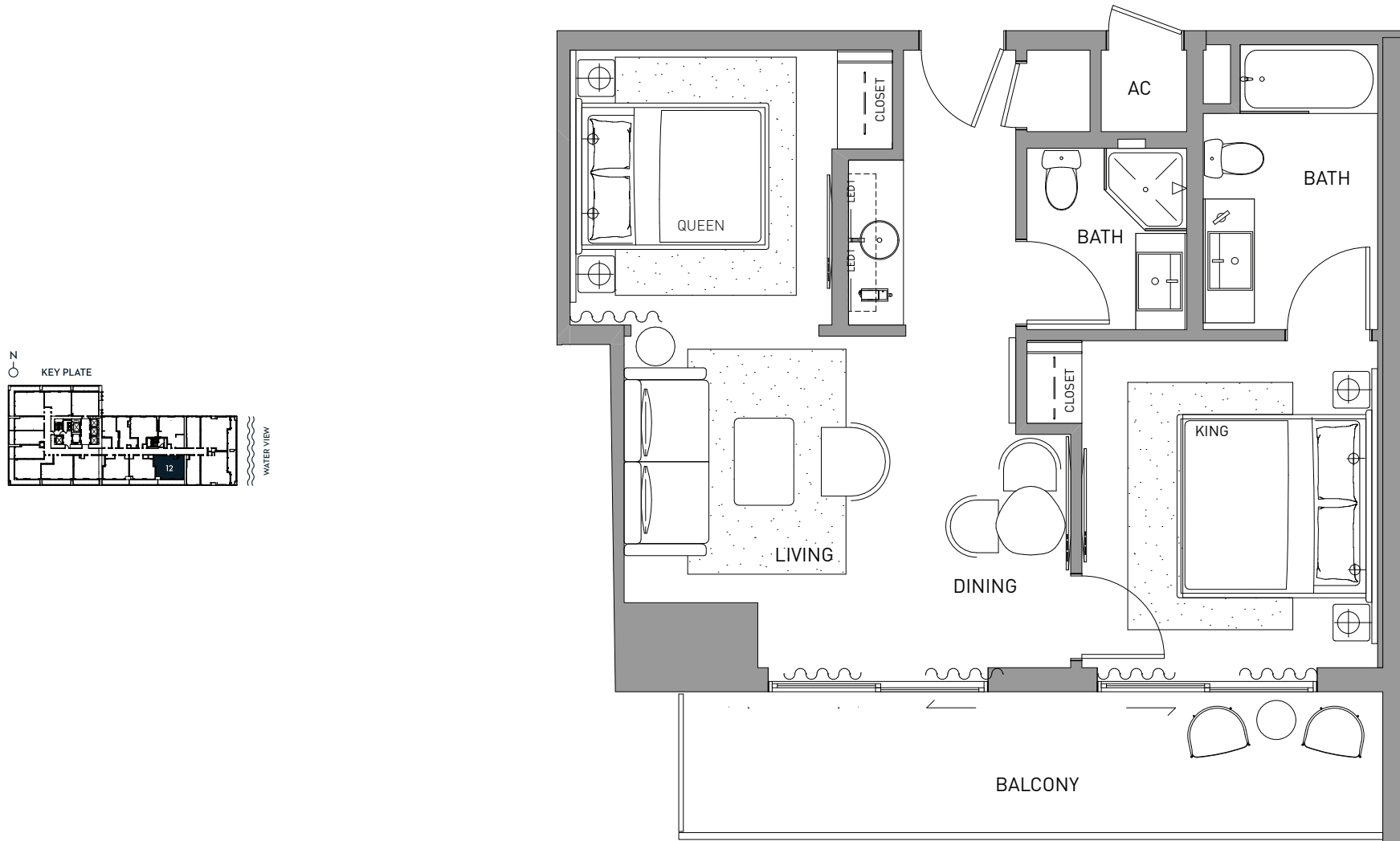


1 BEDROOM + DEN
2 BATHROOM

LINE
12

FLOOR
16-23

INTERIOR	703 SF	65 M ²
BALCONY	140 SF	13 M ²
TOTAL	843 SF	78 M ²



DEVELOPED BY
SIXTH STREET
MIAMI PARTNERS LLC

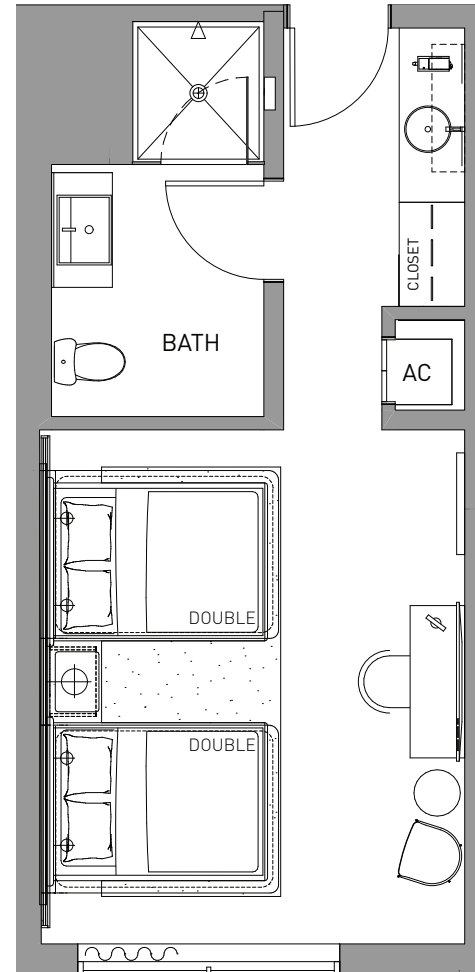
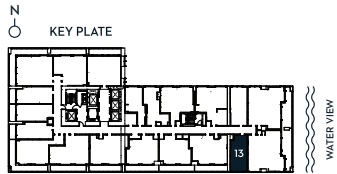
ORAL REPRESENTATIONS CANNOT BE RELIED UPON AS CORRECTLY STATING THE REPRESENTATIONS OF THE DEVELOPER. FOR CORRECT REPRESENTATIONS, MAKE REFERENCE TO THIS BROCHURE AND TO THE DOCUMENTS REQUIRED BY SECTION 718.503, FLORIDA STATUTES, TO BE FURNISHED BY A DEVELOPER TO A BUYER OR LESSEE. THIS IS NOT INTENDED TO BE AN OFFER TO SELL, OR SOLICITATION TO BUY, CONDOMINIUM UNITS TO RESIDENTS OF ANY JURISDICTION WHERE PROHIBITED BY LAW, AND YOUR ELIGIBILITY FOR PURCHASE WILL DEPEND UPON YOUR STATE OF RESIDENCY. THE OFFERING IS MADE ONLY BY THE PROSPECTUS FOR THE CONDOMINIUM AND NO STATEMENT SHOULD BE RELIED UPON IF NOT MADE IN THE PROSPECTUS. STATED INTERIOR SQUARE FOOTAGE IS MEASURED TO THE EXTERIOR FACE OF EXTERIOR WALLS AND TO THE CENTERLINE OF INTERIOR DEMISING WALLS OR TO THE EXTERIOR FACE OF WALLS ADJOINING CORRIDORS OR OTHER COMMON ELEMENTS OR SHARED FACILITIES WITHOUT EXCLUDING AREAS THAT MAY BE OCCUPIED BY COLUMNS OR OTHER STRUCTURAL COMPONENTS. THIS METHOD OF MEASUREMENT VARIES FROM, AND IS LARGER THAN, THE DIMENSIONS THAT WOULD BE DETERMINED BY USING THE DESCRIPTION AND THE DEFINITION OF THE UNIT SET FORTH IN THE DECLARATION (WHICH GENERALLY ONLY INCLUDES THE INTERIOR AIRSPACE BETWEEN THE PERIMETER WALLS AND EXCLUDES STRUCTURAL COMPONENTS). FOR REFERENCE, THE AREA OF THE UNIT, DETERMINED IN ACCORDANCE WITH THE UNIT BOUNDARIES SET FORTH IN THE DECLARATION IS SET FORTH IN EXHIBIT 3 TO THE DECLARATION. ALL DIMENSIONS ARE APPROXIMATE AND MAY VARY WITH ACTUAL CONSTRUCTION.



STUDIO 1 BATHROOM

LINE 13 FLOOR 16-23

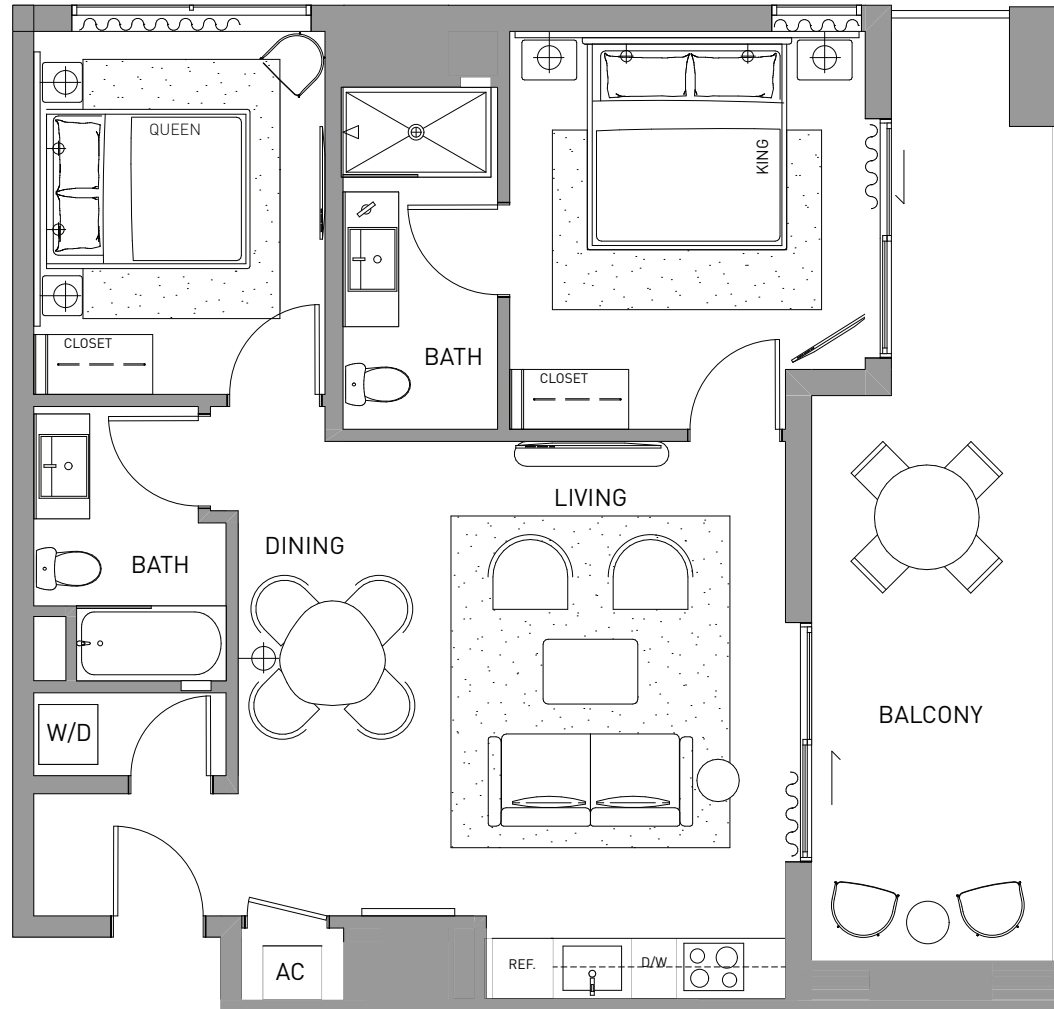
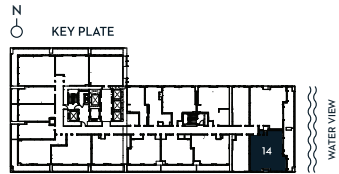
INTERIOR 414 SF 38 M²
TOTAL 414 SF 38 M²

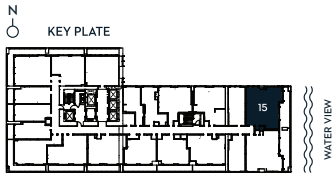
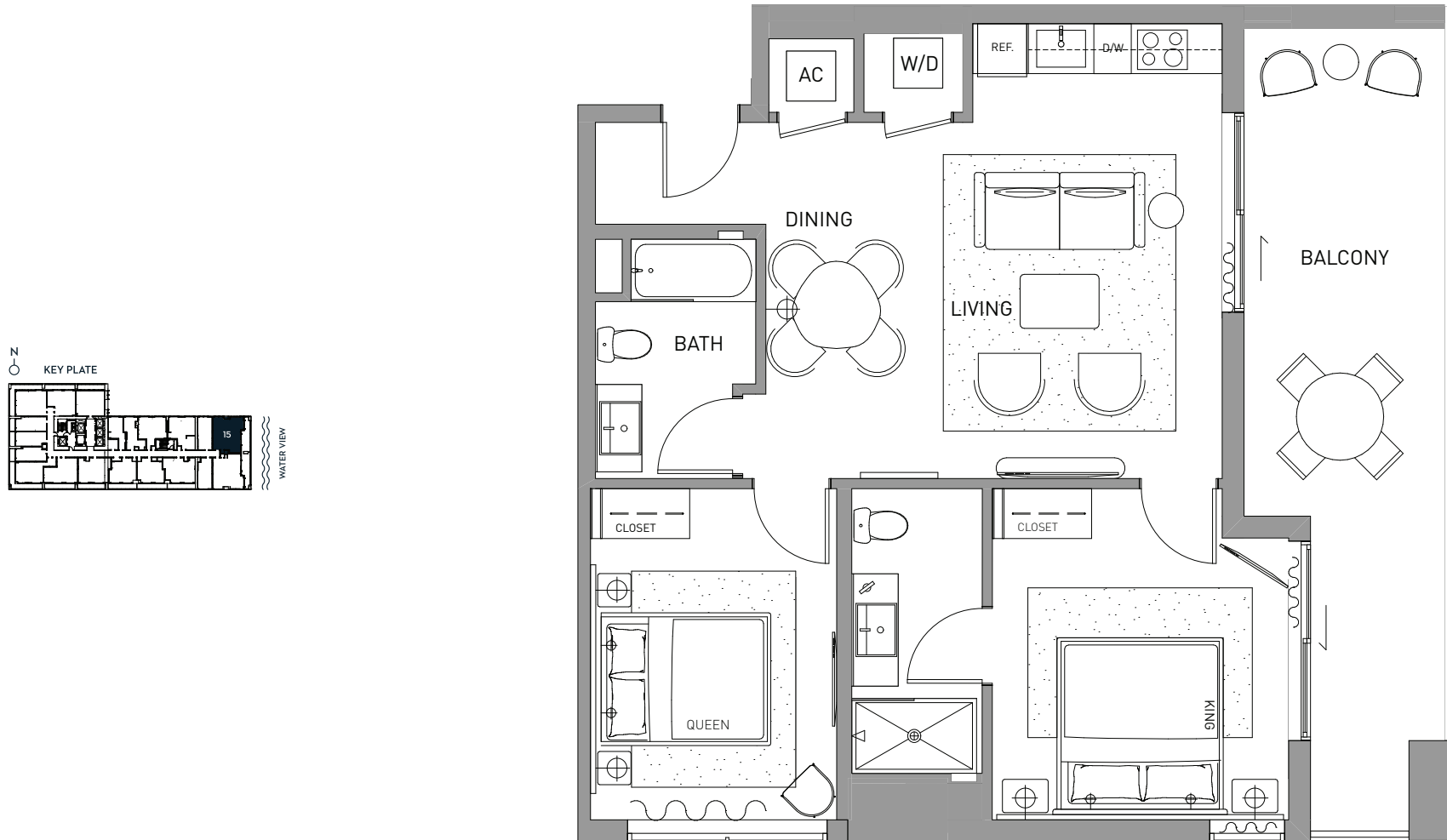


DEVELOPED BY
SIXTH STREET
MIAMI PARTNERS LLC

ORAL REPRESENTATIONS CANNOT BE RELIED UPON AS CORRECTLY STATING THE REPRESENTATIONS OF THE DEVELOPER. FOR CORRECT REPRESENTATIONS, MAKE REFERENCE TO THIS BROCHURE AND TO THE DOCUMENTS REQUIRED BY SECTION 718.503, FLORIDA STATUTES, TO BE FURNISHED BY A DEVELOPER TO A BUYER OR LESSEE. THIS IS NOT INTENDED TO BE AN OFFER TO SELL OR SOLICITATION TO BUY, CONDOMINIUM UNITS TO RESIDENTS OF ANY JURISDICTION WHERE PROHIBITED BY LAW, AND YOUR ELIGIBILITY FOR PURCHASE WILL DEPEND UPON YOUR STATE OF RESIDENCY. THE OFFERING IS MADE ONLY BY THE PROSPECTUS FOR THE CONDOMINIUM AND NO STATEMENT SHOULD BE RELIED UPON IF NOT MADE IN THE PROSPECTUS. STATED INTERIOR SQUARE FOOTAGE IS MEASURED TO THE EXTERIOR FACE OF EXTERIOR WALLS AND TO THE CENTERLINE OF INTERIOR DEMISING WALLS OR TO THE EXTERIOR FACE OF WALLS ADJOINING CORRIDORS OR OTHER COMMON ELEMENTS OR SHARED FACILITIES WITHOUT EXCLUDING AREAS THAT MAY BE OCCUPIED BY COLUMNS OR OTHER STRUCTURAL COMPONENTS. THIS METHOD OF MEASUREMENT VARIES FROM, AND IS LARGER THAN, THE DIMENSIONS THAT WOULD BE DETERMINED BY USING THE DESCRIPTION AND THE DEFINITION OF THE UNIT SET FORTH IN THE DECLARATION (WHICH GENERALLY ONLY INCLUDES THE INTERIOR AIRSPACE BETWEEN THE PERIMETER WALLS AND EXCLUDES STRUCTURAL COMPONENTS). FOR REFERENCE, THE AREA OF THE UNIT, DETERMINED IN ACCORDANCE WITH THE UNIT BOUNDARIES SET FORTH IN THE DECLARATION IS SET FORTH IN EXHIBIT 3 TO THE DECLARATION. ALL DIMENSIONS ARE APPROXIMATE AND MAY VARY WITH ACTUAL CONSTRUCTION.





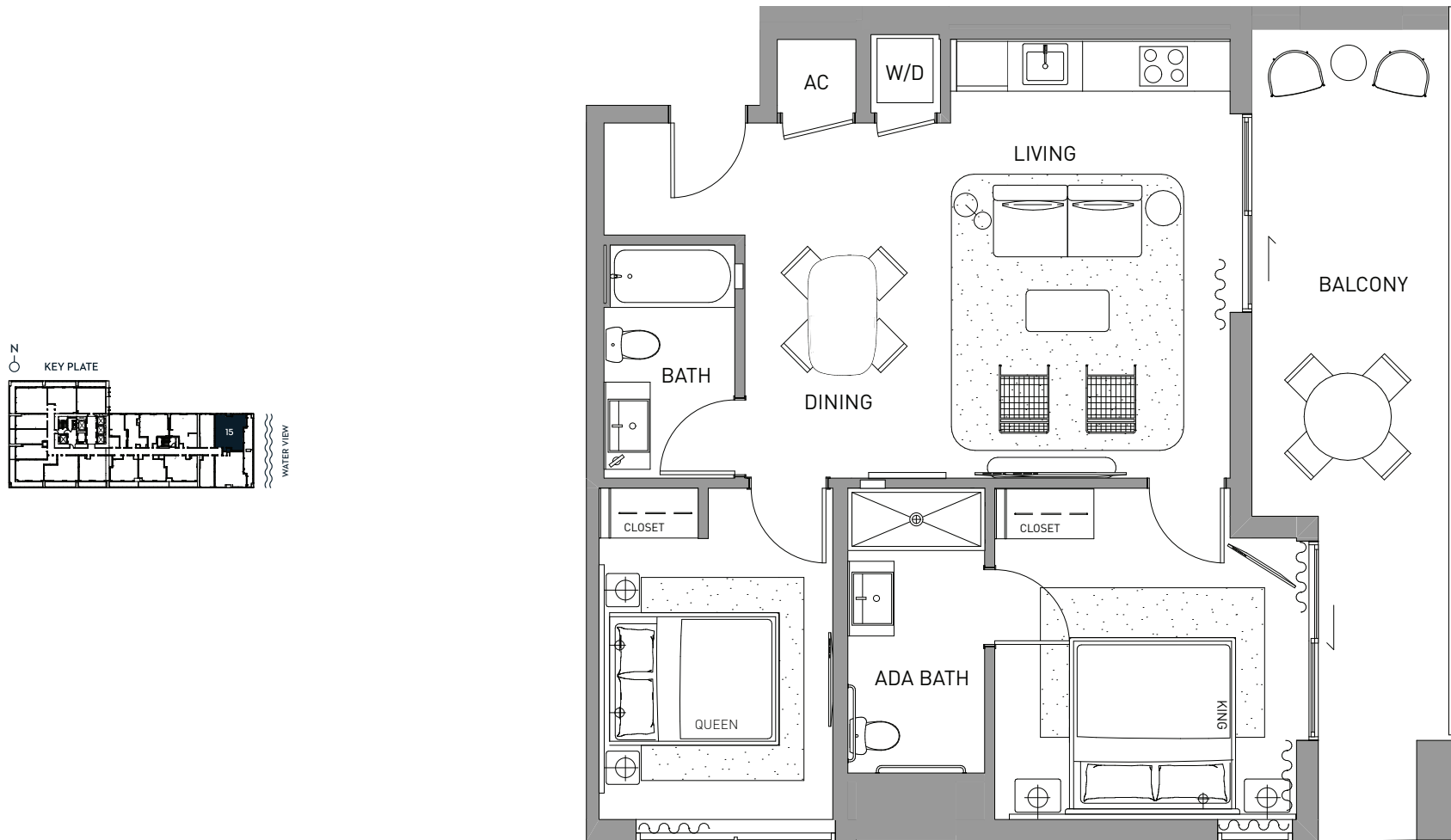


2 BEDROOM 2 BATHROOM

LINE
15
(ADA)

FLOOR
16-23

INTERIOR	900 SF	84 M ²
BALCONY	248 SF	23 M ²
TOTAL	1,148 SF	107 M ²



DEVELOPED BY
SIXTH STREET
MIAMI PARTNERS LLC

ORAL REPRESENTATIONS CANNOT BE RELIED UPON AS CORRECTLY STATING THE REPRESENTATIONS OF THE DEVELOPER. FOR CORRECT REPRESENTATIONS, MAKE REFERENCE TO THIS BROCHURE AND TO THE DOCUMENTS REQUIRED BY SECTION 718.503, FLORIDA STATUTES, TO BE FURNISHED BY A DEVELOPER TO A BUYER OR LESSEE. THIS IS NOT INTENDED TO BE AN OFFER TO SELL, OR SOLICITATION TO BUY, CONDOMINIUM UNITS TO RESIDENTS OF ANY JURISDICTION WHERE PROHIBITED BY LAW, AND YOUR ELIGIBILITY FOR PURCHASE WILL DEPEND UPON YOUR STATE OF RESIDENCY. THE OFFERING IS MADE ONLY BY THE PROSPECTUS FOR THE CONDOMINIUM AND NO STATEMENT SHOULD BE RELIED UPON IF NOT MADE IN THE PROSPECTUS. STATED INTERIOR SQUARE FOOTAGE IS MEASURED TO THE EXTERIOR FACE OF EXTERIOR WALLS AND TO THE CENTERLINE OF INTERIOR DEMISING WALLS OR TO THE EXTERIOR FACE OF WALLS ADJOINING CORRIDORS OR OTHER COMMON ELEMENTS OR SHARED FACILITIES WITHOUT EXCLUDING AREAS THAT MAY BE OCCUPIED BY COLUMNS OR OTHER STRUCTURAL COMPONENTS. THIS METHOD OF MEASUREMENT VARIES FROM, AND IS LARGER THAN, THE DIMENSIONS THAT WOULD BE DETERMINED BY USING THE DESCRIPTION AND THE DEFINITION OF THE UNIT SET FORTH IN THE DECLARATION (WHICH GENERALLY ONLY INCLUDES THE INTERIOR AIRSPACE BETWEEN THE PERIMETER WALLS AND EXCLUDES STRUCTURAL COMPONENTS). FOR REFERENCE, THE AREA OF THE UNIT, DETERMINED IN ACCORDANCE WITH THE UNIT BOUNDARIES SET FORTH IN THE DECLARATION IS SET FORTH IN EXHIBIT 3 TO THE DECLARATION. ALL DIMENSIONS ARE APPROXIMATE AND MAY VARY WITH ACTUAL CONSTRUCTION.

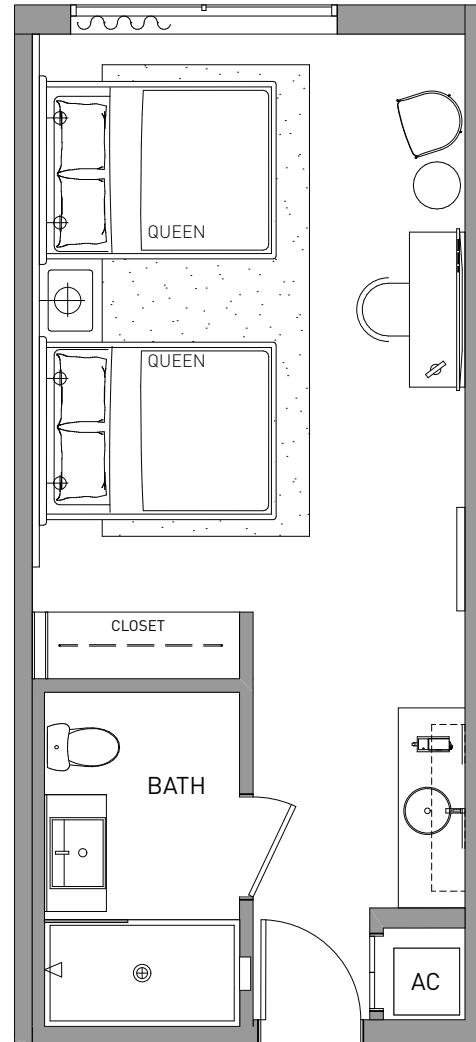
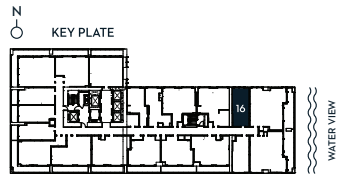


STUDIO 1 BATHROOM

LINE
16

FLOOR
16-23

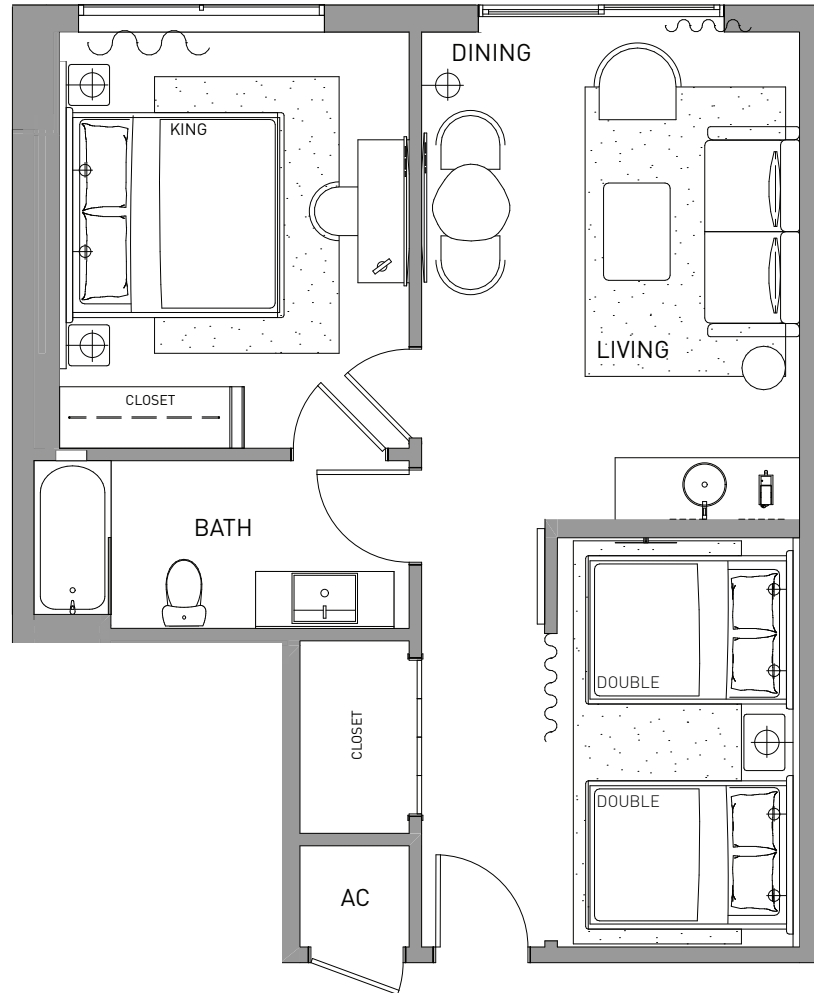
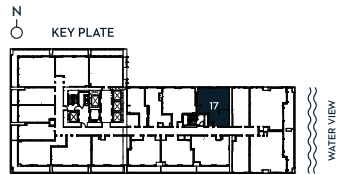
INTERIOR 447 SF 42 M²
TOTAL 447 SF 42 M²

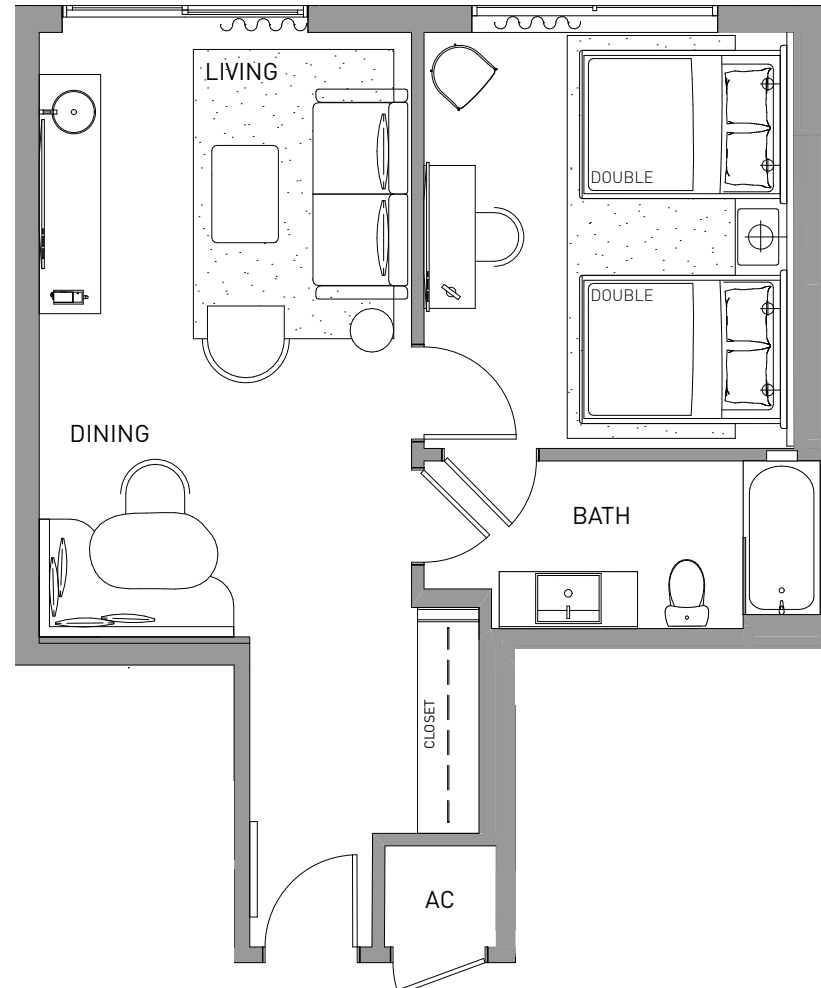
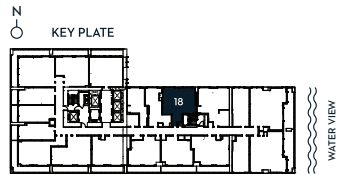


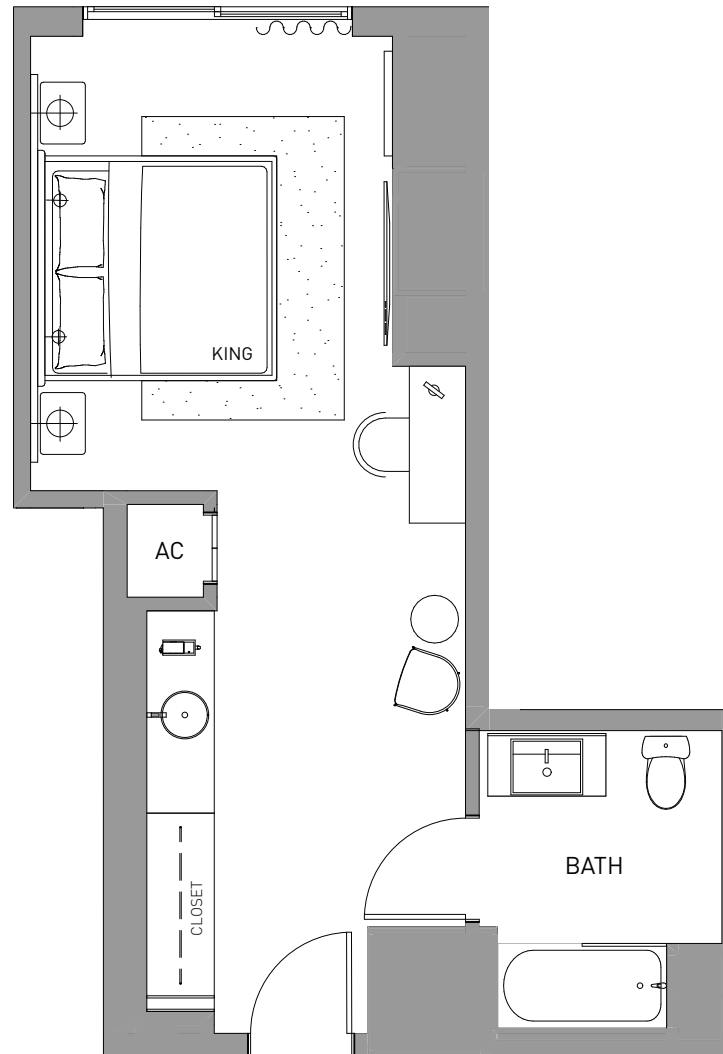
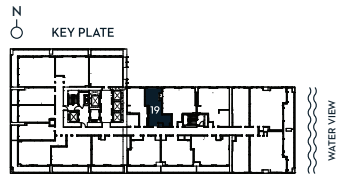
DEVELOPED BY
SIXTH STREET
MIAMI PARTNERS LLC

ORAL REPRESENTATIONS CANNOT BE RELIED UPON AS CORRECTLY STATING THE REPRESENTATIONS OF THE DEVELOPER. FOR CORRECT REPRESENTATIONS, MAKE REFERENCE TO THIS BROCHURE AND TO THE DOCUMENTS REQUIRED BY SECTION 718.503, FLORIDA STATUTES, TO BE FURNISHED BY A DEVELOPER TO A BUYER OR LESSEE. THIS IS NOT INTENDED TO BE AN OFFER TO SELL OR SOLICITATION TO BUY, CONDOMINIUM UNITS TO RESIDENTS OF ANY JURISDICTION WHERE PROHIBITED BY LAW, AND YOUR ELIGIBILITY FOR PURCHASE WILL DEPEND UPON YOUR STATE OF RESIDENCY. THE OFFERING IS MADE ONLY BY THE PROSPECTUS FOR THE CONDOMINIUM AND NO STATEMENT SHOULD BE RELIED UPON IF NOT MADE IN THE PROSPECTUS. STATED INTERIOR SQUARE FOOTAGE IS MEASURED TO THE EXTERIOR FACE OF EXTERIOR WALLS AND TO THE CENTERLINE OF INTERIOR DEMISING WALLS OR TO THE EXTERIOR FACE OF WALLS ADJOINING CORRIDORS OR OTHER COMMON ELEMENTS OR SHARED FACILITIES WITHOUT EXCLUDING AREAS THAT MAY BE OCCUPIED BY COLUMNS OR OTHER STRUCTURAL COMPONENTS. THIS METHOD OF MEASUREMENT VARIES FROM, AND IS LARGER THAN, THE DIMENSIONS THAT WOULD BE DETERMINED BY USING THE DESCRIPTION AND THE DEFINITION OF THE UNIT SET FORTH IN THE DECLARATION (WHICH GENERALLY ONLY INCLUDES THE INTERIOR AIRSPACE BETWEEN THE PERIMETER WALLS AND EXCLUDES STRUCTURAL COMPONENTS). FOR REFERENCE, THE AREA OF THE UNIT, DETERMINED IN ACCORDANCE WITH THE UNIT BOUNDARIES SET FORTH IN THE DECLARATION, IS SET FORTH IN EXHIBIT 3 TO THE DECLARATION. ALL DIMENSIONS ARE APPROXIMATE AND MAY VARY WITH ACTUAL CONSTRUCTION.









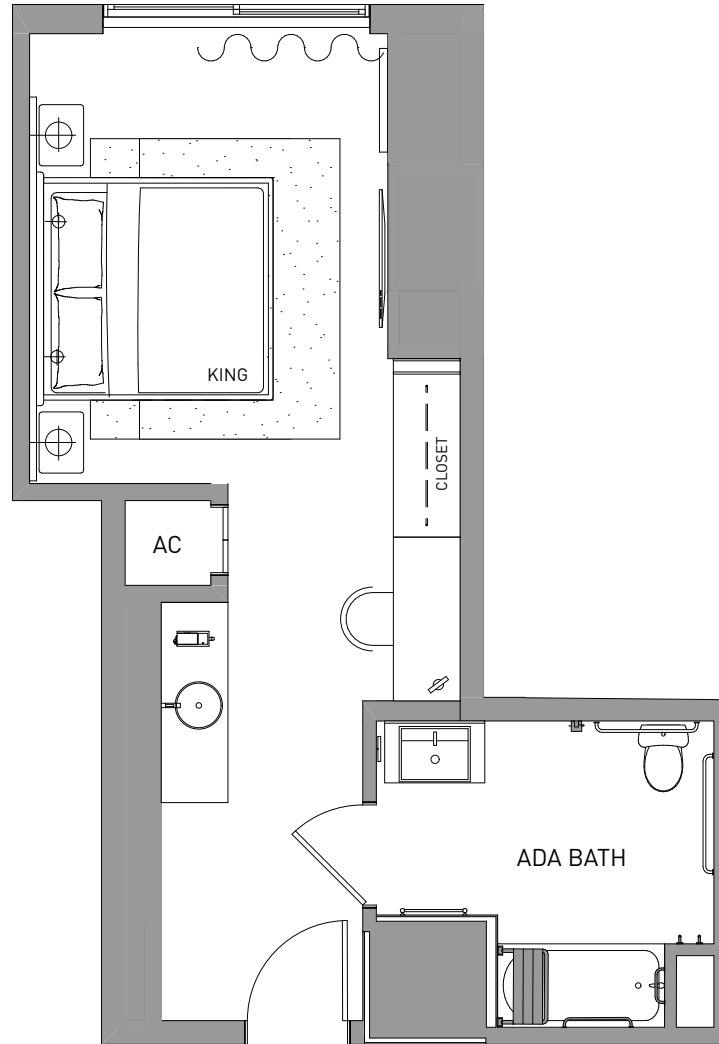
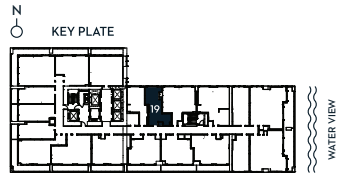
DEVELOPED BY
SIXTH STREET
MIAMI PARTNERS LLC

STUDIO 1 BATHROOM

LINE
19
(ADA)

FLOOR
16-23

INTERIOR	441 SF	41 M ²
TOTAL	441 SF	41 M ²



DEVELOPED BY
SIXTH STREET
MIAMI PARTNERS LLC



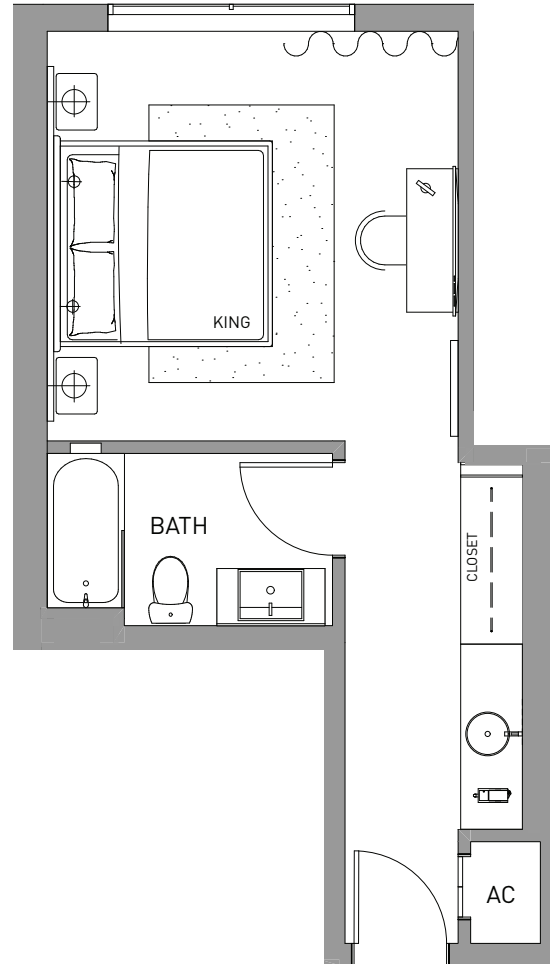
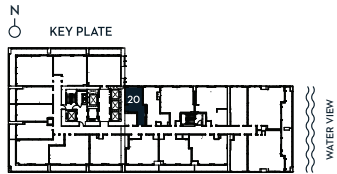
ORAL REPRESENTATIONS CANNOT BE RELIED UPON AS CORRECTLY STATING THE REPRESENTATIONS OF THE DEVELOPER. FOR CORRECT REPRESENTATIONS, MAKE REFERENCE TO THIS BROCHURE AND TO THE DOCUMENTS REQUIRED BY SECTION 718.503, FLORIDA STATUTES, TO BE FURNISHED BY A DEVELOPER TO A BUYER OR LESSEE. THIS IS NOT INTENDED TO BE AN OFFER TO SELL, OR SOLICITATION TO BUY, CONDOMINIUM UNITS TO RESIDENTS OF ANY JURISDICTION WHERE PROHIBITED BY LAW, AND YOUR ELIGIBILITY FOR PURCHASE WILL DEPEND UPON YOUR STATE OF RESIDENCY. THE OFFERING IS MADE ONLY BY THE PROSPECTUS FOR THE CONDOMINIUM AND NO STATEMENT SHOULD BE RELIED UPON IF NOT MADE IN THE PROSPECTUS. STATED INTERIOR SQUARE FOOTAGE IS MEASURED TO THE EXTERIOR FACE OF EXTERIOR WALLS AND TO THE CENTERLINE OF INTERIOR DEMISING WALLS OR TO THE EXTERIOR FACE OF WALLS ADJOINING CORRIDORS OR OTHER COMMON ELEMENTS OR SHARED FACILITIES WITHOUT EXCLUDING AREAS THAT MAY BE OCCUPIED BY COLUMNS OR OTHER STRUCTURAL COMPONENTS. THIS METHOD OF MEASUREMENT VARIES FROM, AND IS LARGER THAN, THE DIMENSIONS THAT WOULD BE DETERMINED BY USING THE DESCRIPTION AND THE DEFINITION OF THE UNIT SET FORTH IN THE DECLARATION (WHICH GENERALLY ONLY INCLUDES THE INTERIOR AIRSPACE BETWEEN THE PERIMETER WALLS AND EXCLUDES STRUCTURAL COMPONENTS). FOR REFERENCE, THE AREA OF THE UNIT, DETERMINED IN ACCORDANCE WITH THE UNIT BOUNDARIES SET FORTH IN THE DECLARATION IS SET FORTH IN EXHIBIT 3 TO THE DECLARATION. ALL DIMENSIONS ARE APPROXIMATE AND MAY VARY WITH ACTUAL CONSTRUCTION.

STUDIO 1 BATHROOM

LINE
20

FLOOR
16-23

INTERIOR 410 SF 38 M²
TOTAL 410 SF 38 M²



DEVELOPED BY
SIXTH STREET
MIAMI PARTNERS LLC

ORAL REPRESENTATIONS CANNOT BE RELIED UPON AS CORRECTLY STATING THE REPRESENTATIONS OF THE DEVELOPER. FOR CORRECT REPRESENTATIONS, MAKE REFERENCE TO THIS BROCHURE AND TO THE DOCUMENTS REQUIRED BY SECTION 718.503, FLORIDA STATUTES, TO BE FURNISHED BY A DEVELOPER TO A BUYER OR LESSEE. THIS IS NOT INTENDED TO BE AN OFFER TO SELL, OR SOLICITATION TO BUY, CONDOMINIUM UNITS TO RESIDENTS OF ANY JURISDICTION WHERE PROHIBITED BY LAW, AND YOUR ELIGIBILITY FOR PURCHASE WILL DEPEND UPON YOUR STATE OF RESIDENCY. THE OFFERING IS MADE ONLY BY THE PROSPECTUS FOR THE CONDOMINIUM AND NO STATEMENT SHOULD BE RELIED UPON IF NOT MADE IN THE PROSPECTUS. STATED INTERIOR SQUARE FOOTAGE IS MEASURED TO THE EXTERIOR FACE OF EXTERIOR WALLS AND TO THE CENTERLINE OF INTERIOR DEMISING WALLS OR TO THE EXTERIOR FACE OF WALLS ADJOINING CORRIDORS OR OTHER COMMON ELEMENTS OR SHARED FACILITIES WITHOUT EXCLUDING AREAS THAT MAY BE OCCUPIED BY COLUMNS OR OTHER STRUCTURAL COMPONENTS. THIS METHOD OF MEASUREMENT VARIES FROM, AND IS LARGER THAN, THE DIMENSIONS THAT WOULD BE DETERMINED BY USING THE DESCRIPTION AND THE DEFINITION OF THE UNIT SET FORTH IN THE DECLARATION (WHICH GENERALLY ONLY INCLUDES THE INTERIOR AIRSPACE BETWEEN THE PERIMETER WALLS AND EXCLUDES STRUCTURAL COMPONENTS). FOR REFERENCE, THE AREA OF THE UNIT, DETERMINED IN ACCORDANCE WITH THE UNIT BOUNDARIES SET FORTH IN THE DECLARATION IS SET FORTH IN EXHIBIT 3 TO THE DECLARATION. ALL DIMENSIONS ARE APPROXIMATE AND MAY VARY WITH ACTUAL CONSTRUCTION.

