

Studio
TYPE A



NOMAD
RESIDENCES
WYNWOOD

NoMAD

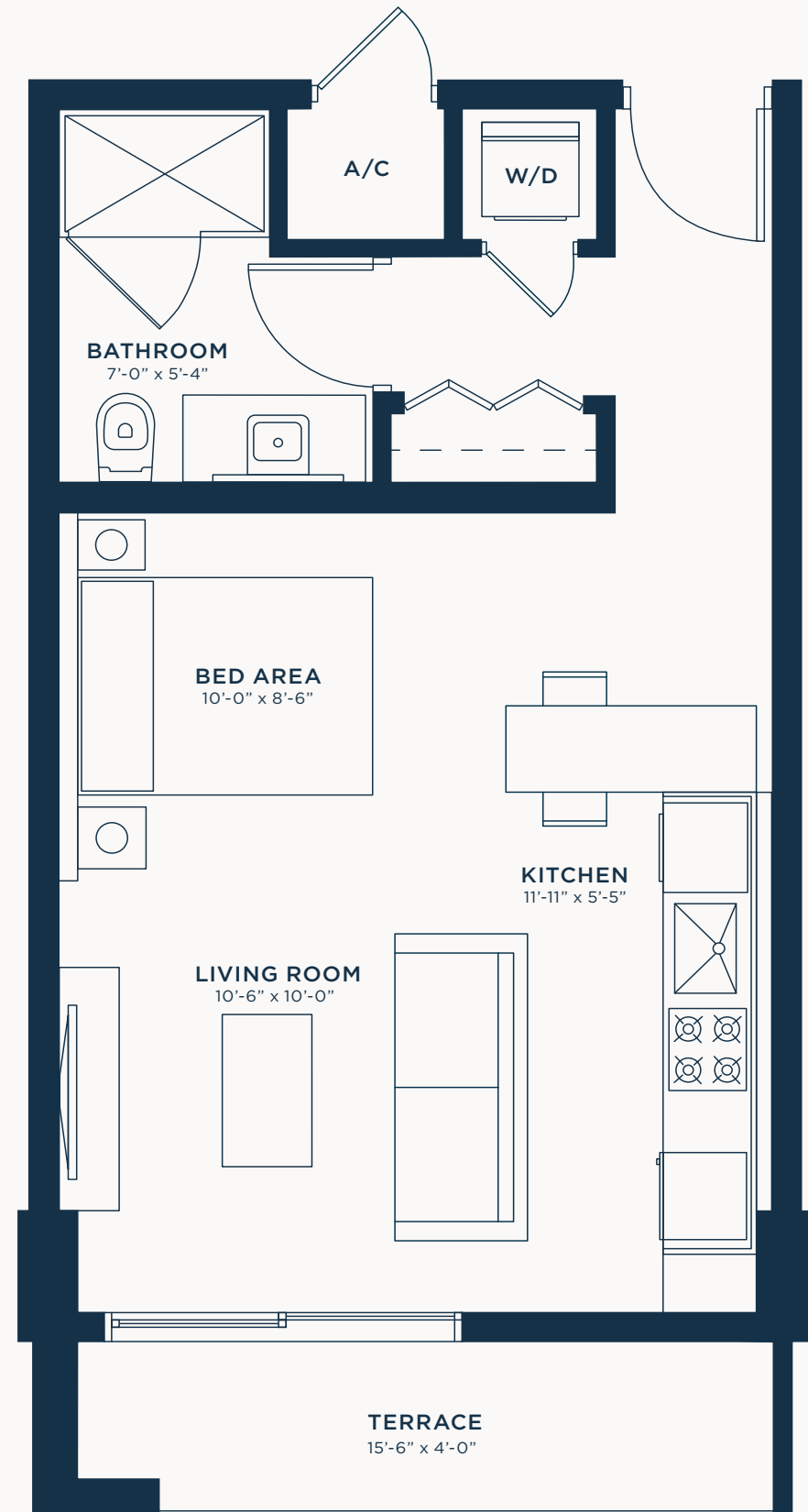
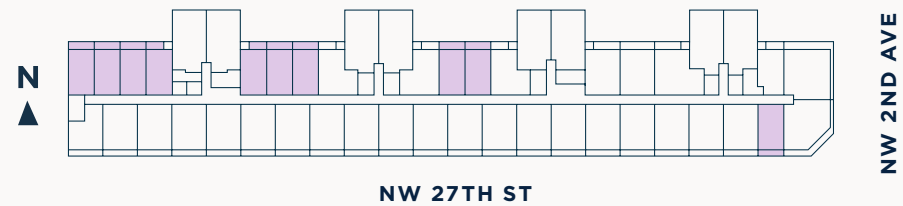
RESIDENCES
WYNWOOD



STUDIO TYPE A

Studio | 1 Bath

INTERIOR	479 SF / 45 M2
TERRACE	62 SF / 6 M2
TOTAL	541 SF / 50 M2



EXCLUSIVE SALES AND MARKETING BY RELATED REALTY IN COLLABORATION WITH FORTUNE DEVELOPMENT SALES

The dimensions stated for this unit floor plan are approximate because there are various recognized methods for calculating the square footage of a unit. The square footage stated here is calculated from the exterior boundaries of the exterior walls to the centerline of interior demising walls without deductions for cutouts, curves, or architectural features. This method typically results in quoted dimensions greater than the dimensions that would be determined by using other accepted methods. The definition of "Unit" and the calculation method to be relied upon is set forth by the Developer, PRH G40 Property Owner, LLC, in Developer's prospectus and the method set forth in the Developer's prospectus may result in a square footage calculation less than the method used here. Consult the Developer's prospectus for information on what is offered with the Unit and the calculation of the Unit square footage and dimensions.





FORTUNE
DEVELOPMENT
— SALES —

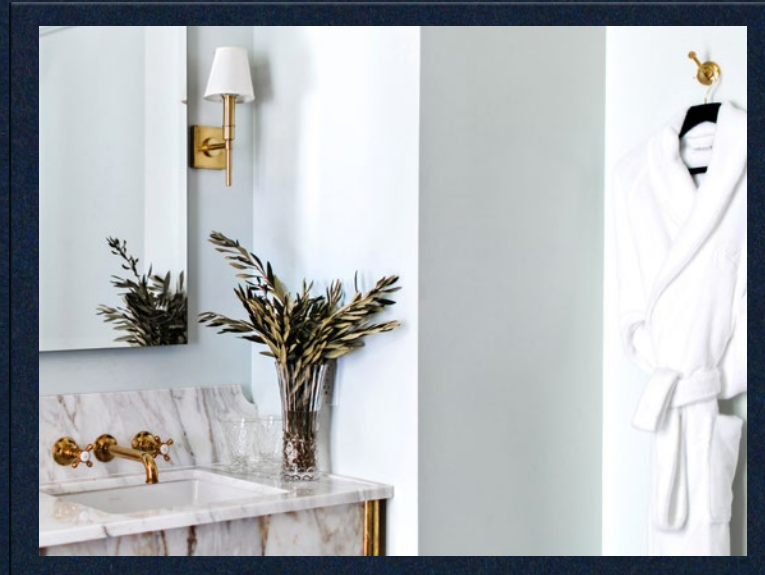
Tricap

Yaimet Planos
📞 786-450-8357

Alessandra
Trinchero, MBA
📞 786-448-1327

🌐 www.miamirealestateduo.com
✉ info@miamirealestateduo.com

2700 NW 2ND AVENUE
MIAMI, FL 33127



Studio
TYPE A2



NOMAD
RESIDENCES
WYNWOOD

NoMAD

RESIDENCES
WYNWOOD



STUDIO TYPE A2

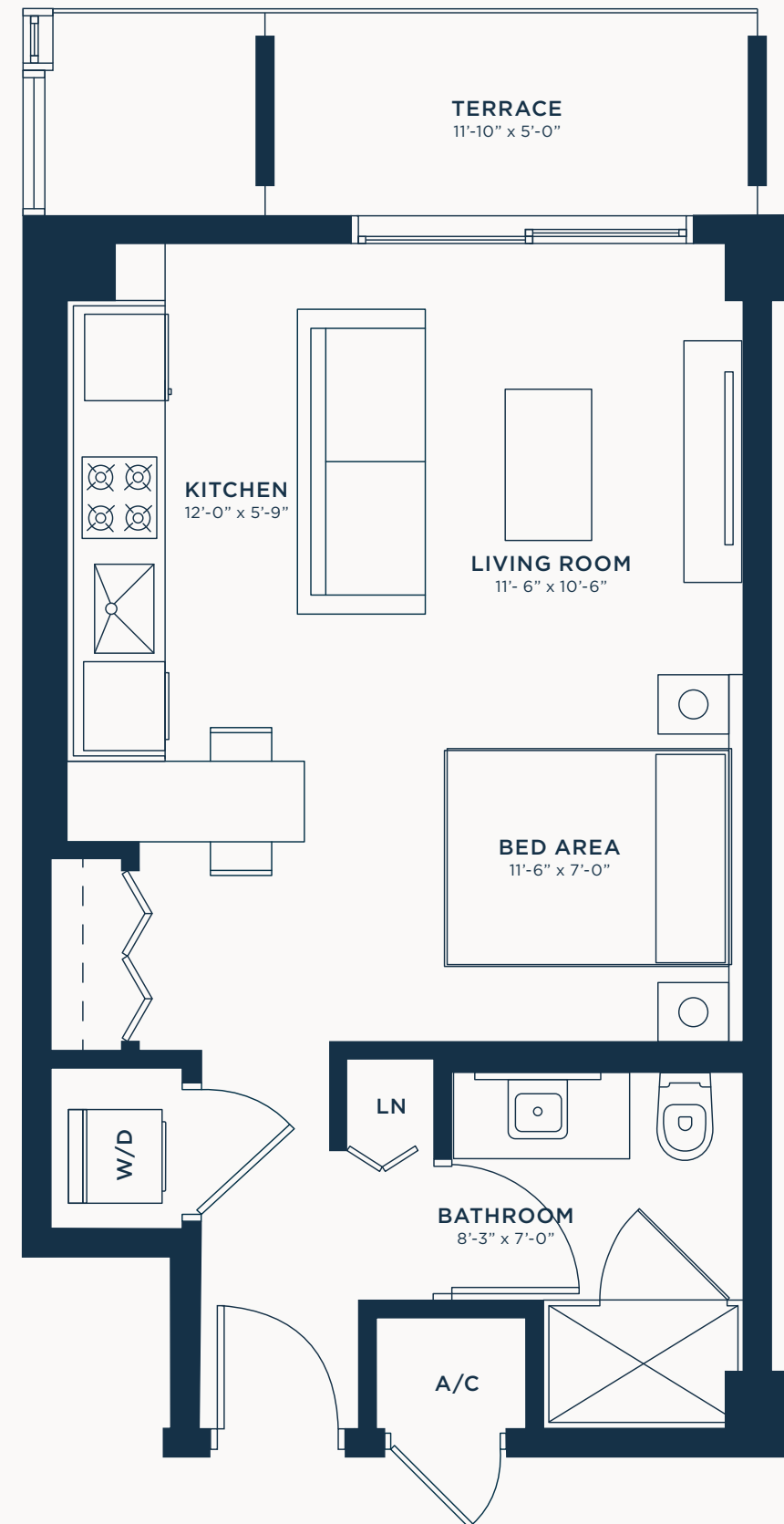
Studio | 1 Bath

INTERIOR	464 SF / 43 M2
TERRACE	55 SF / 5 M2
TOTAL	519 SF / 48 M2



EXCLUSIVE SALES AND MARKETING BY RELATED REALTY IN COLLABORATION WITH FORTUNE DEVELOPMENT SALES

The dimensions stated for this unit floor plan are approximate because there are various recognized methods for calculating the square footage of a unit. The square footage stated here is calculated from the exterior boundaries of the exterior walls to the centerline of interior demising walls without deductions for cutouts, curves, or architectural features. This method typically results in quoted dimensions greater than the dimensions that would be determined by using other accepted methods. The definition of "Unit" and the calculation method to be relied upon is set forth by the Developer, PRH G40 Property Owner, LLC, in Developer's prospectus and the method set forth in the Developer's prospectus may result in a square footage calculation less than the method used here. Consult the Developer's prospectus for information on what is offered with the Unit and the calculation of the Unit square footage and dimensions.





FORTUNE
DEVELOPMENT
— SALES —

Tricap

Yaimet Planos

📞 786-450-8357

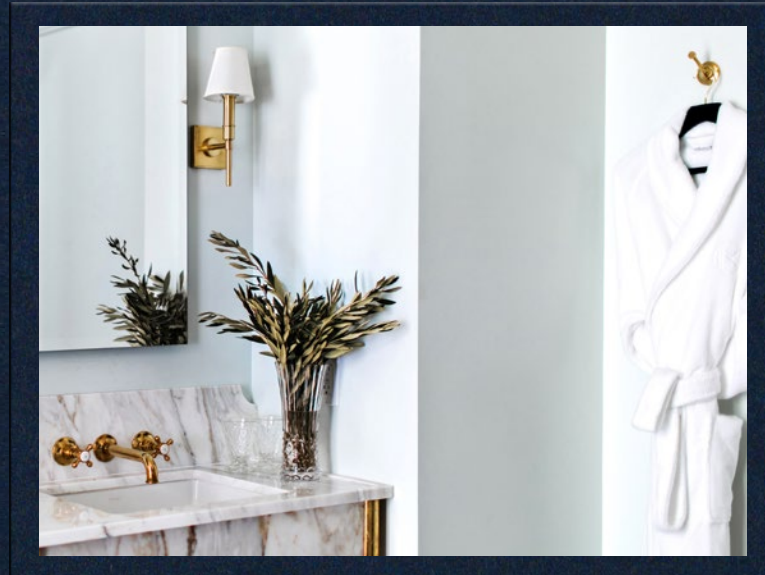
Alessandra
Trinchero, MBA

📞 786-448-1327

🌐 www.miamirealestateduo.com

✉ info@miamirealestateduo.com

2700 NW 2ND AVENUE
MIAMI, FL 33127



Studio
TYPE B



NOMAD
RESIDENCES
WYNWOOD

NoMAD

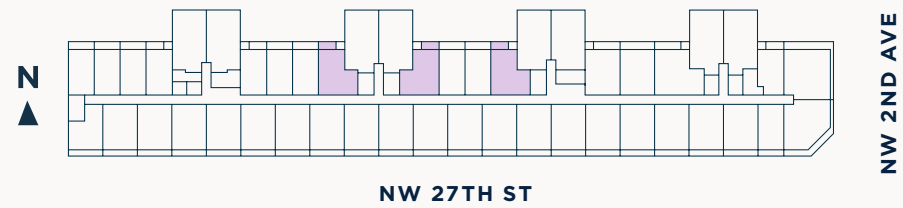
RESIDENCES
WYNWOOD



STUDIO TYPE B

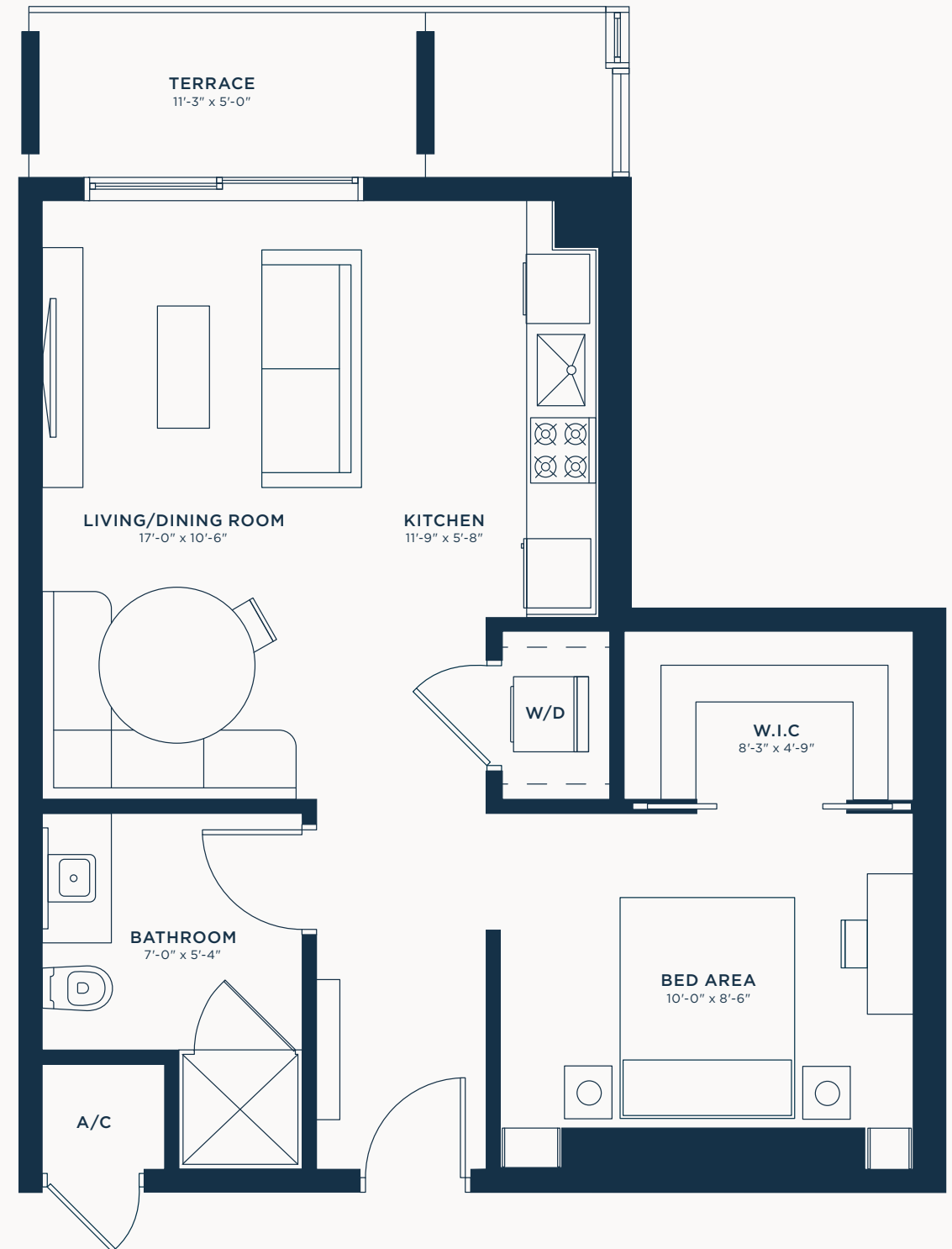
Studio | 1 Bath

INTERIOR	624 SF / 58 M2
TERRACE	54 SF / 6 M2
TOTAL	678 SF / 63 M2



EXCLUSIVE SALES AND MARKETING BY RELATED REALTY IN COLLABORATION WITH FORTUNE DEVELOPMENT SALES

The dimensions stated for this unit floor plan are approximate because there are various recognized methods for calculating the square footage of a unit. The square footage stated here is calculated from the exterior boundaries of the exterior walls to the centerline of interior demising walls without deductions for cutouts, curves, or architectural features. This method typically results in quoted dimensions greater than the dimensions that would be determined by using other accepted methods. The definition of "Unit" and the calculation method to be relied upon is set forth by the Developer, PRH G40 Property Owner, LLC, in Developer's prospectus and the method set forth in the Developer's prospectus may result in a square footage calculation less than the method used here. Consult the Developer's prospectus for information on what is offered with the Unit and the calculation of the Unit square footage and dimensions.





FORTUNE
DEVELOPMENT
— SALES —

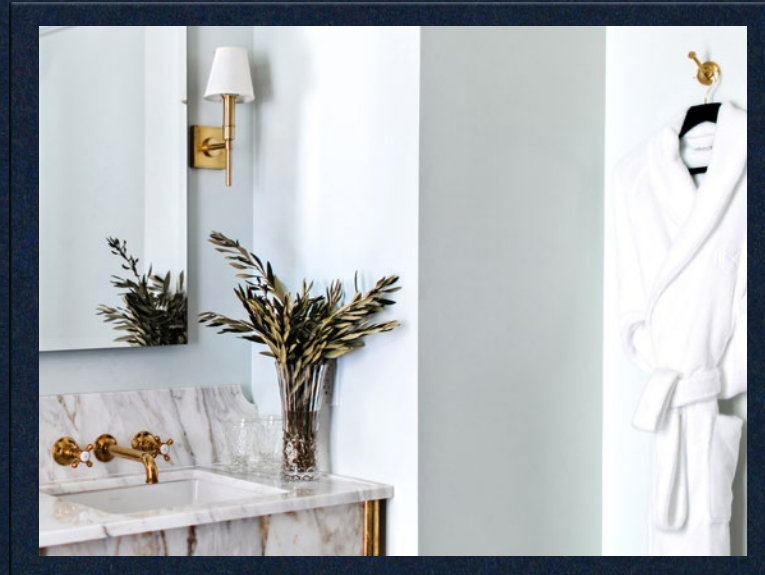
Tricap

Yaimet Planos
📞 786-450-8357

Alessandra
Trinchero, MBA
📞 786-448-1327

🌐 www.miamirealestateduo.com
✉ info@miamirealestateduo.com

2700 NW 2ND AVENUE
MIAMI, FL 33127



One Bedroom
TYPE A



NOMAD
RESIDENCES
WYNWOOD

NoMAD

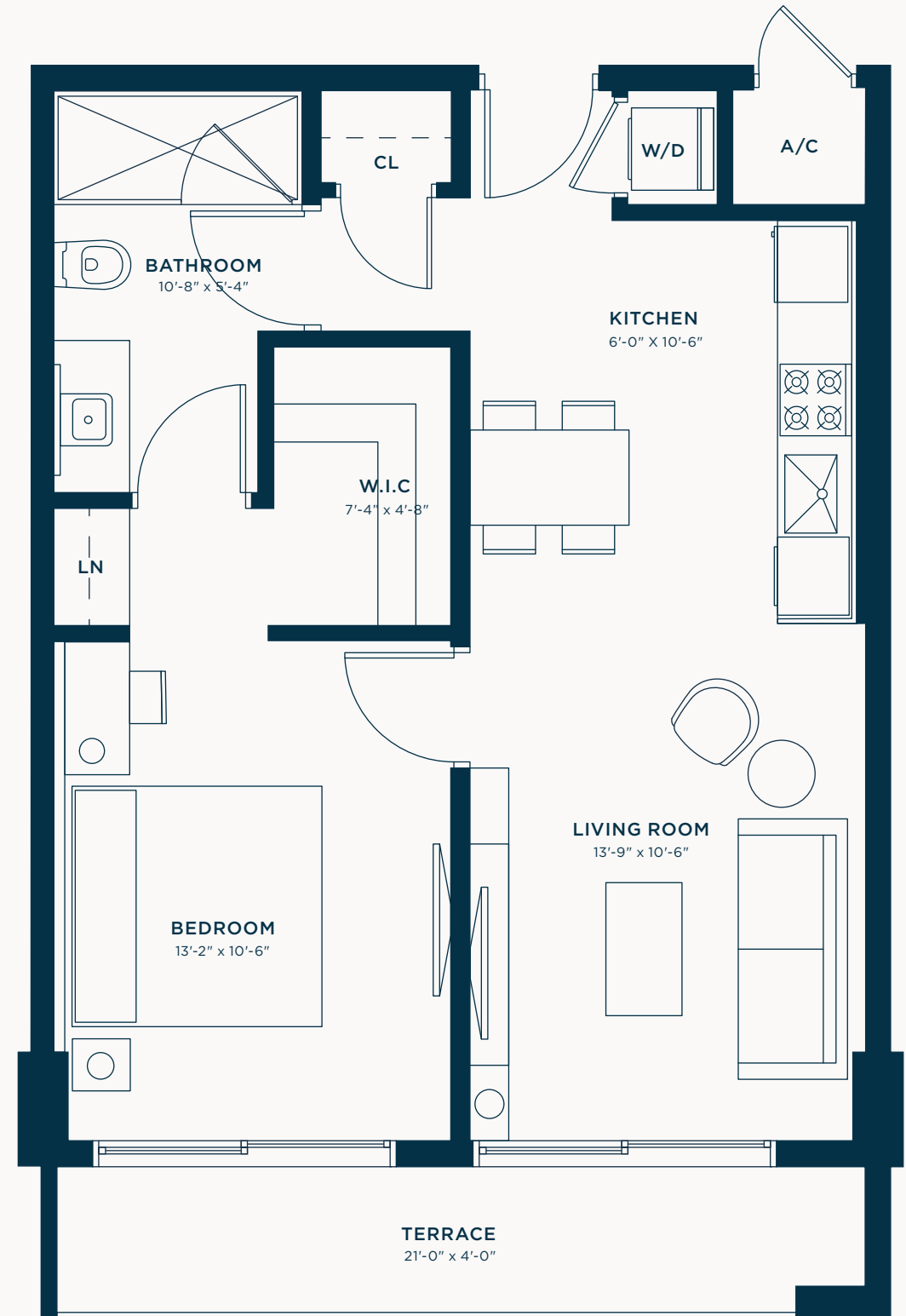
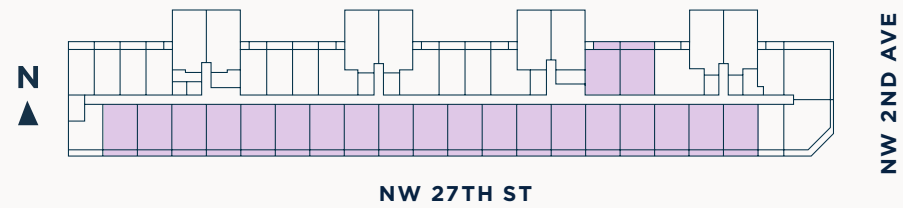
RESIDENCES
WYNWOOD



ONE BEDROOM TYPE A

1 Bed | 1 Bath

INTERIOR	638 SF / 59 M2
TERRACE	82 SF / 8 M2
TOTAL	720 SF / 67 M2



EXCLUSIVE SALES AND MARKETING BY RELATED REALTY IN COLLABORATION WITH FORTUNE DEVELOPMENT SALES

The dimensions stated for this unit floor plan are approximate because there are various recognized methods for calculating the square footage of a unit. The square footage stated here is calculated from the exterior boundaries of the exterior walls to the centerline of interior demising walls without deductions for cutouts, curves, or architectural features. This method typically results in quoted dimensions greater than the dimensions that would be determined by using other accepted methods. The definition of "Unit" and the calculation method to be relied upon is set forth by the Developer, PRH G40 Property Owner, LLC, in Developer's prospectus and the method set forth in the Developer's prospectus may result in a square footage calculation less than the method used here. Consult the Developer's prospectus for information on what is offered with the Unit and the calculation of the Unit square footage and dimensions.





FORTUNE
DEVELOPMENT
— SALES —

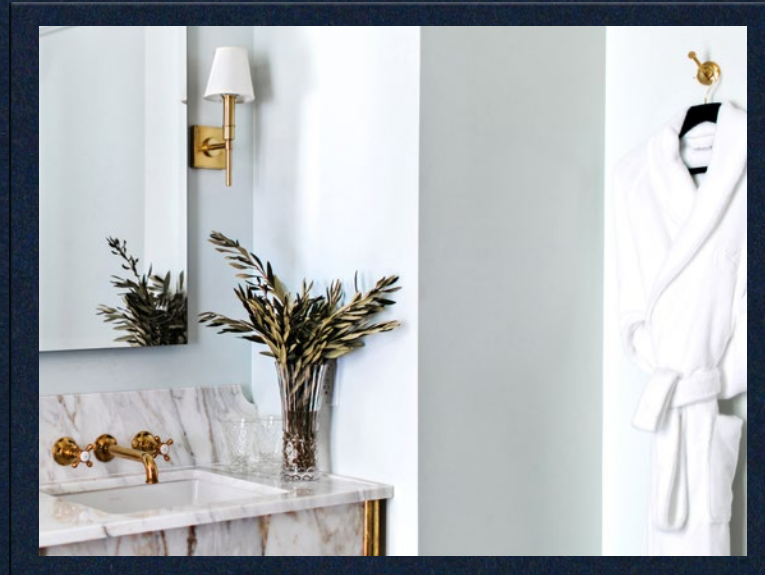
Tricap

Yaimet Planos
📞 786-450-8357

Alessandra
Trincherro, MBA
📞 786-448-1327

🌐 www.miamirealestateduo.com
✉ info@miamirealestateduo.com

2700 NW 2ND AVENUE
MIAMI, FL 33127



One Bedroom
TYPE B



NOMAD
RESIDENCES
WYNWOOD

NoMAD

RESIDENCES
WYNWOOD



ONE BEDROOM TYPE B

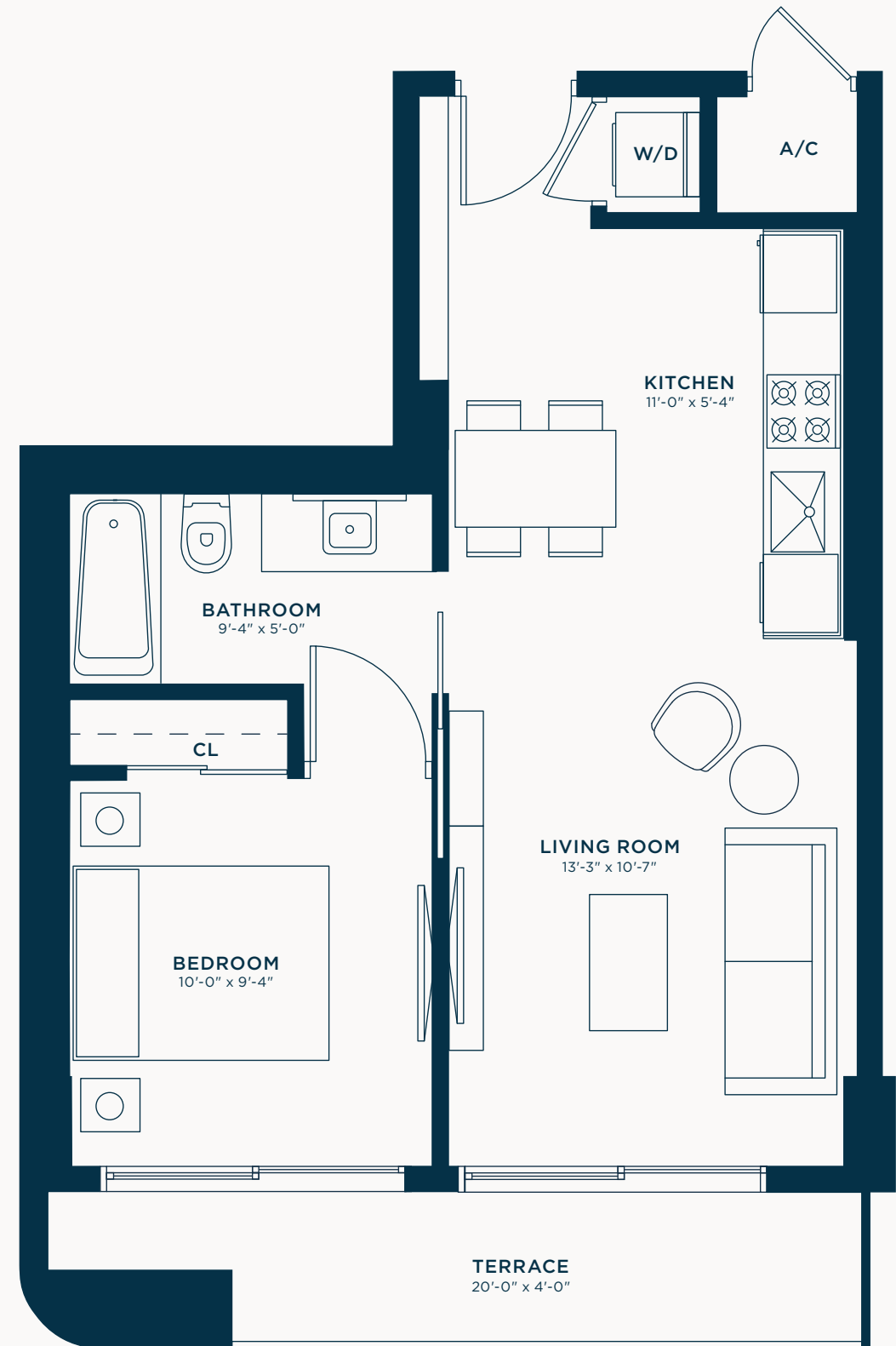
1 Bed | 1 Bath

INTERIOR	528 SF / 49 M2
TERRACE	75 SF / 7 M2
TOTAL	603 SF / 56 M2



EXCLUSIVE SALES AND MARKETING BY RELATED REALTY IN COLLABORATION WITH FORTUNE DEVELOPMENT SALES

The dimensions stated for this unit floor plan are approximate because there are various recognized methods for calculating the square footage of a unit. The square footage stated here is calculated from the exterior boundaries of the exterior walls to the centerline of interior demising walls without deductions for cutouts, curves, or architectural features. This method typically results in quoted dimensions greater than the dimensions that would be determined by using other accepted methods. The definition of "Unit" and the calculation method to be relied upon is set forth by the Developer, PRH G40 Property Owner, LLC, in Developer's prospectus and the method set forth in the Developer's prospectus may result in a square footage calculation less than the method used here. Consult the Developer's prospectus for information on what is offered with the Unit and the calculation of the Unit square footage and dimensions.





FORTUNE
DEVELOPMENT
— SALES —

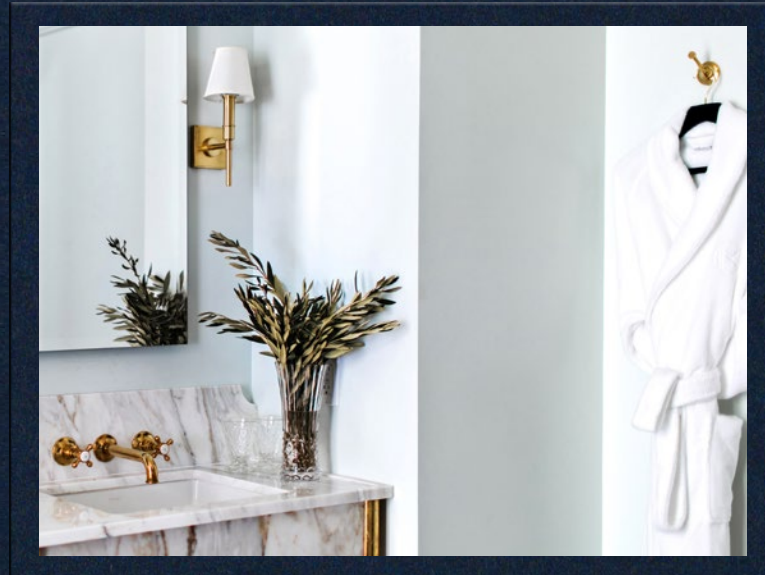
Tricap

Yaimet Planos
📞 786-450-8357

Alessandra
Trinchero, MBA
📞 786-448-1327

🌐 www.miamirealestateduo.com
✉ info@miamirealestateduo.com

2700 NW 2ND AVENUE
MIAMI, FL 33127



One Bedroom
TYPE C



NOMAD
RESIDENCES
WYNWOOD

NoMAD

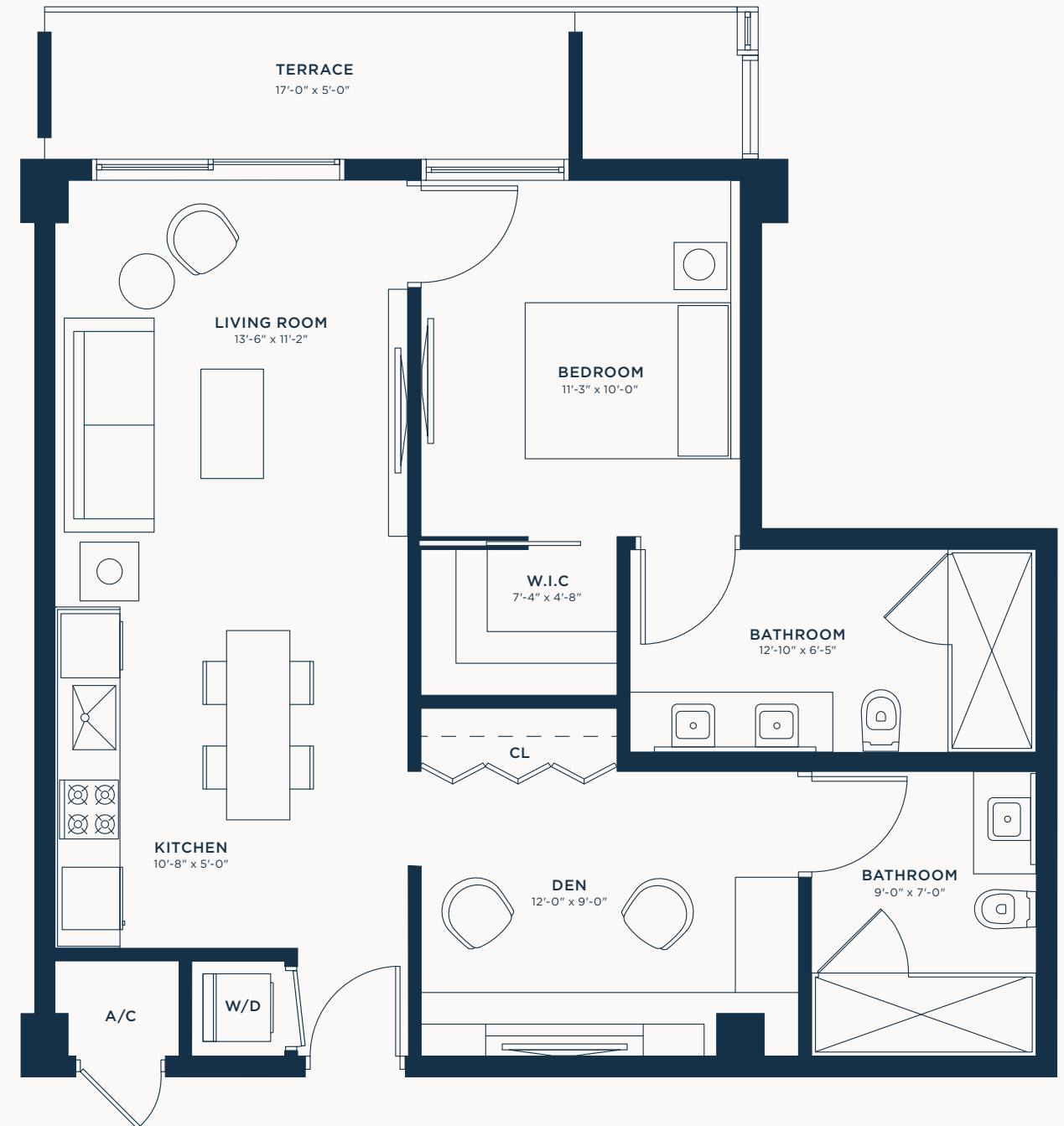
RESIDENCES
WYNWOOD



ONE BEDROOM TYPE C

1 Bed | 2 Bath

INTERIOR	806 SF / 75 M2
TERRACE	81 SF / 8 M2
TOTAL	887 SF / 82 M2



EXCLUSIVE SALES AND MARKETING BY RELATED REALTY IN COLLABORATION WITH FORTUNE DEVELOPMENT SALES

The dimensions stated for this unit floor plan are approximate because there are various recognized methods for calculating the square footage of a unit. The square footage stated here is calculated from the exterior boundaries of the exterior walls to the centerline of interior demising walls without deductions for cutouts, curves, or architectural features. This method typically results in quoted dimensions greater than the dimensions that would be determined by using other accepted methods. The definition of "Unit" and the calculation method to be relied upon is set forth by the Developer, PRH G40 Property Owner, LLC, in Developer's prospectus and the method set forth in the Developer's prospectus may result in a square footage calculation less than the method used here. Consult the Developer's prospectus for information on what is offered with the Unit and the calculation of the Unit square footage and dimensions.





FORTUNE
DEVELOPMENT
— SALES —

Tricap

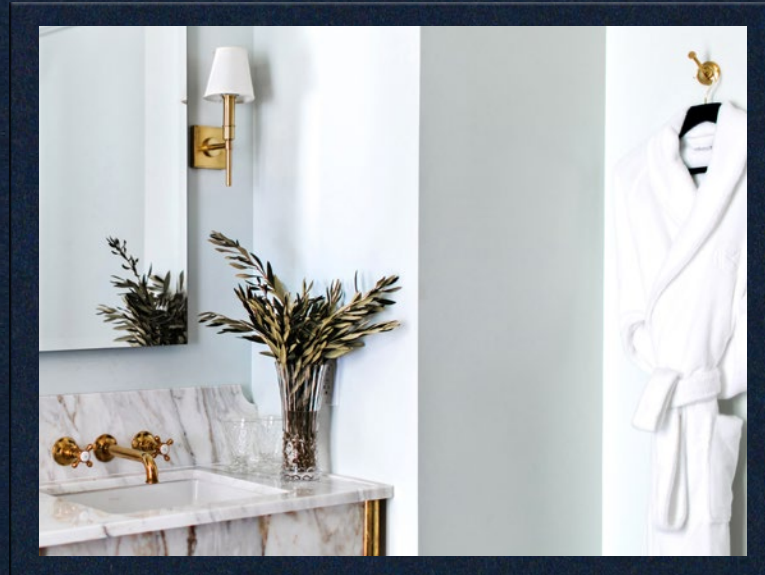
Yaimet Planos
📞 786-450-8357

Alessandra
Trinchero, MBA
📞 786-448-1327

🌐 www.miamirealestateduo.com

✉ info@miamirealestateduo.com

2700 NW 2ND AVENUE
MIAMI, FL 33127



Two Bedroom
TYPE A



NOMAD
RESIDENCES
WYNWOOD

NoMAD

RESIDENCES
WYNWOOD



TWO BEDROOM TYPE A

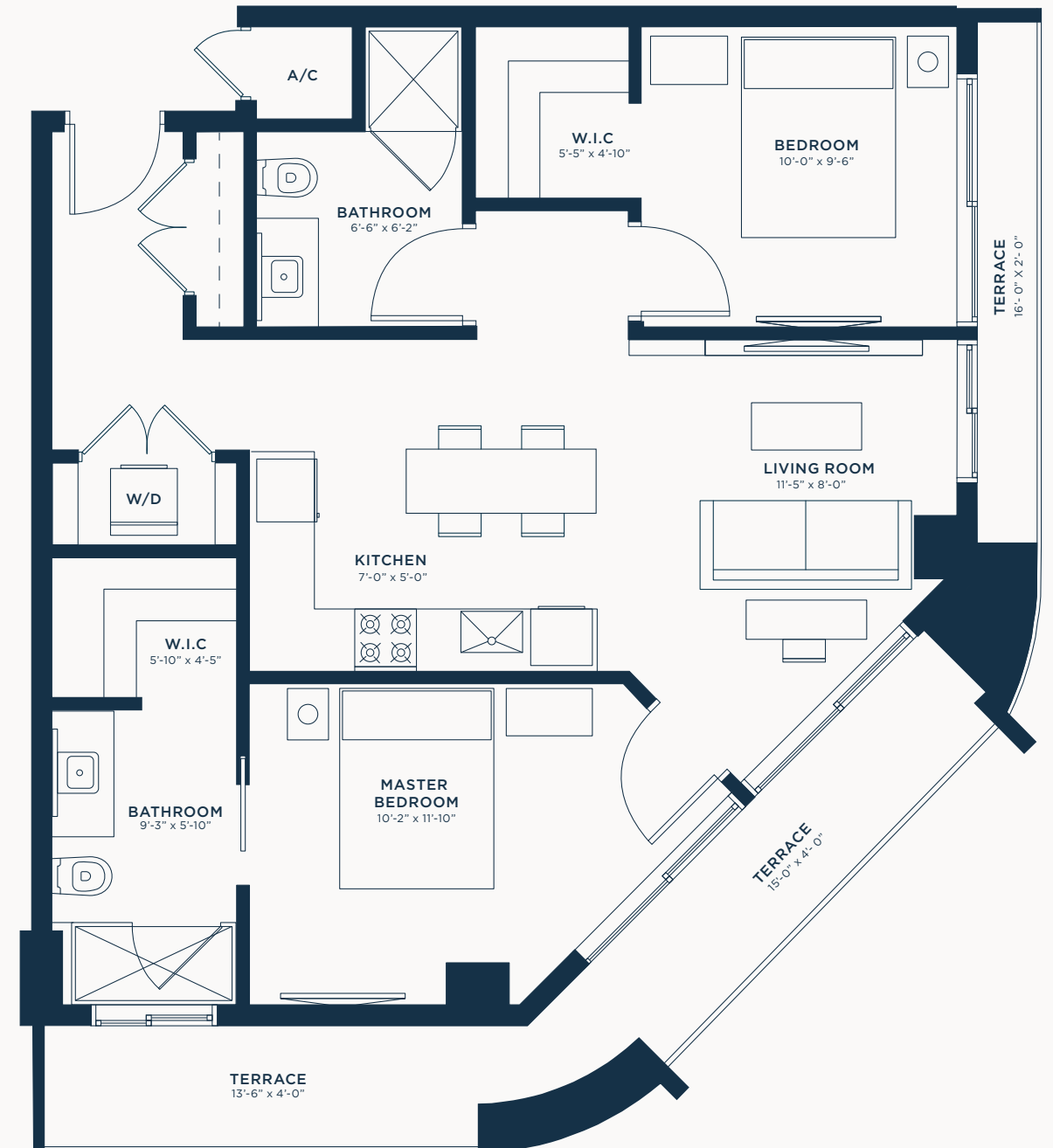
2 Bed | 2 Bath

INTERIOR	830 SF / 77 M2
TERRACE	161 SF / 15 M2
TOTAL	991 SF / 92 M2



EXCLUSIVE SALES AND MARKETING BY RELATED REALTY IN COLLABORATION WITH FORTUNE DEVELOPMENT SALES

The dimensions stated for this unit floor plan are approximate because there are various recognized methods for calculating the square footage of a unit. The square footage stated here is calculated from the exterior boundaries of the exterior walls to the centerline of interior demising walls without deductions for cutouts, curves, or architectural features. This method typically results in quoted dimensions greater than the dimensions that would be determined by using other accepted methods. The definition of "Unit" and the calculation method to be relied upon is set forth by the Developer, PRH G40 Property Owner, LLC, in Developer's prospectus and the method set forth in the Developer's prospectus may result in a square footage calculation less than the method used here. Consult the Developer's prospectus for information on what is offered with the Unit and the calculation of the Unit square footage and dimensions.





FORTUNE
DEVELOPMENT
— SALES —

Tricap

Yaimet Planos

📞 786-450-8357

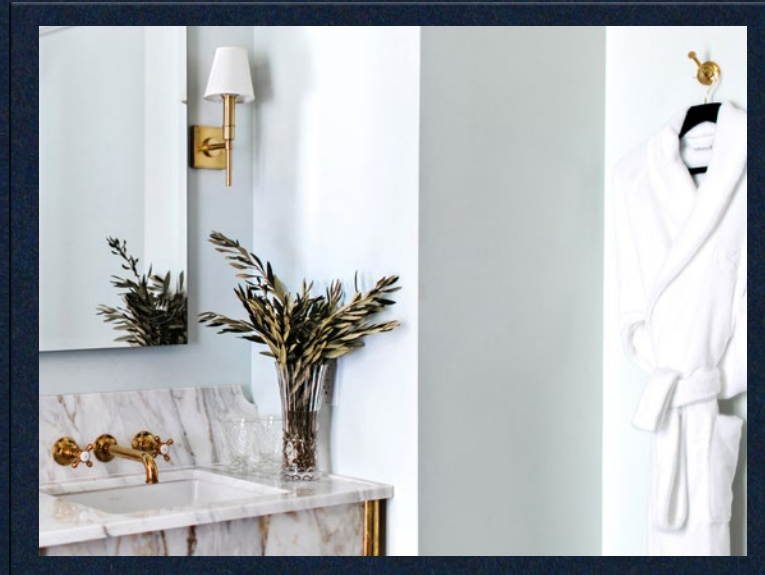
Alessandra
Trinchero, MBA

📞 786-448-1327

🌐 www.miamirealestateduo.com

✉ info@miamirealestateduo.com

2700 NW 2ND AVENUE
MIAMI, FL 33127



Two Bedroom
TYPE B



NOMAD
RESIDENCES
WYNWOOD

NoMAD

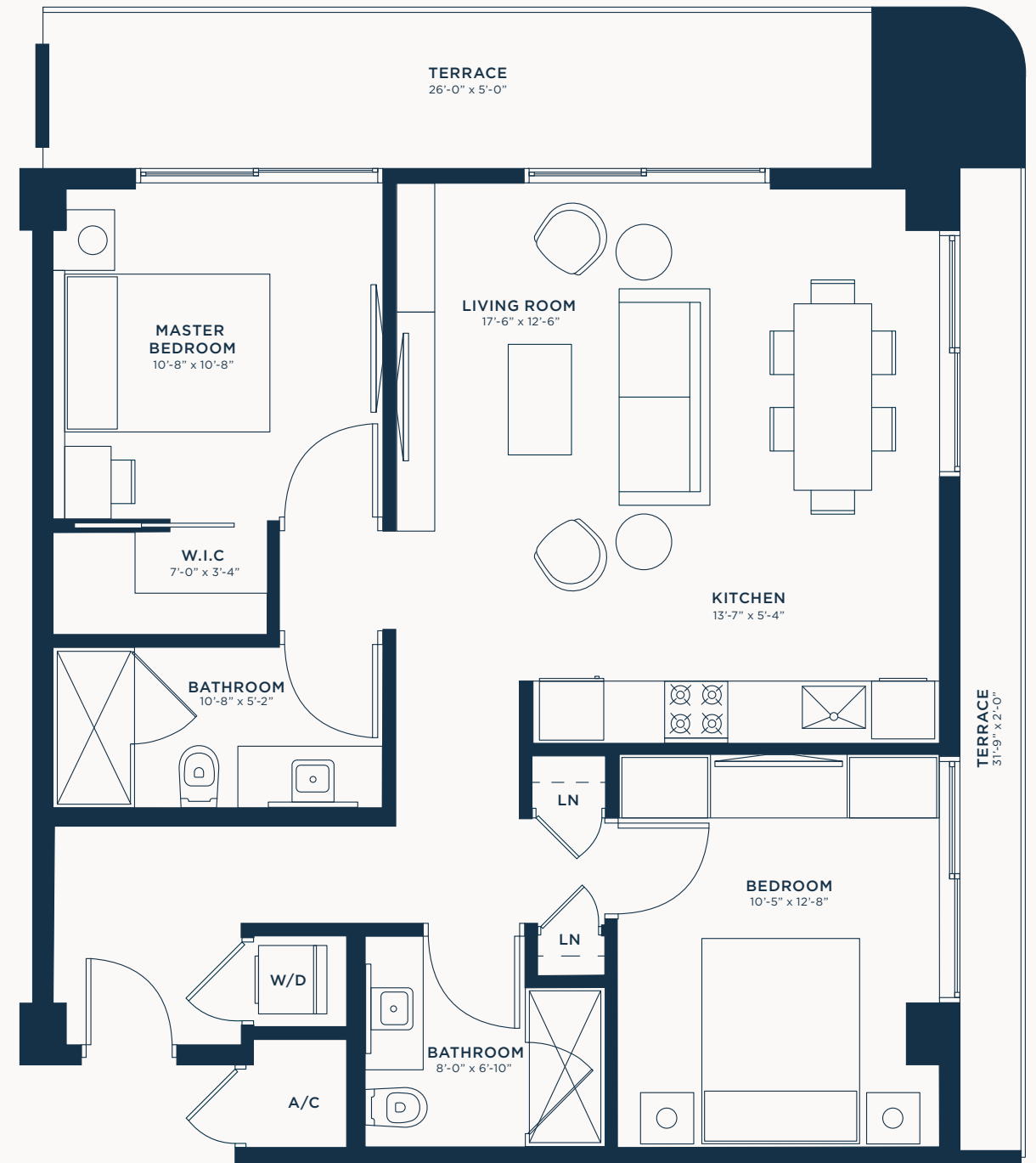
RESIDENCES
WYNWOOD



TWO BEDROOM TYPE B

2 Bed | 2 Bath

INTERIOR 931 SF / 86 M2
TERRACE 195 SF / 18 M2
TOTAL 1,126 SF / 105 M2



EXCLUSIVE SALES AND MARKETING BY RELATED REALTY IN COLLABORATION WITH FORTUNE DEVELOPMENT SALES

The dimensions stated for this unit floor plan are approximate because there are various recognized methods for calculating the square footage of a unit. The square footage stated here is calculated from the exterior boundaries of the exterior walls to the centerline of interior demising walls without deductions for cutouts, curves, or architectural features. This method typically results in quoted dimensions greater than the dimensions that would be determined by using other accepted methods. The definition of "Unit" and the calculation method to be relied upon is set forth by the Developer, PRH G40 Property Owner, LLC, in Developer's prospectus and the method set forth in the Developer's prospectus may result in a square footage calculation less than the method used here. Consult the Developer's prospectus for information on what is offered with the Unit and the calculation of the Unit square footage and dimensions.





FORTUNE
DEVELOPMENT
— SALES —

Tricap

Yaimet Planos

📞 786-450-8357

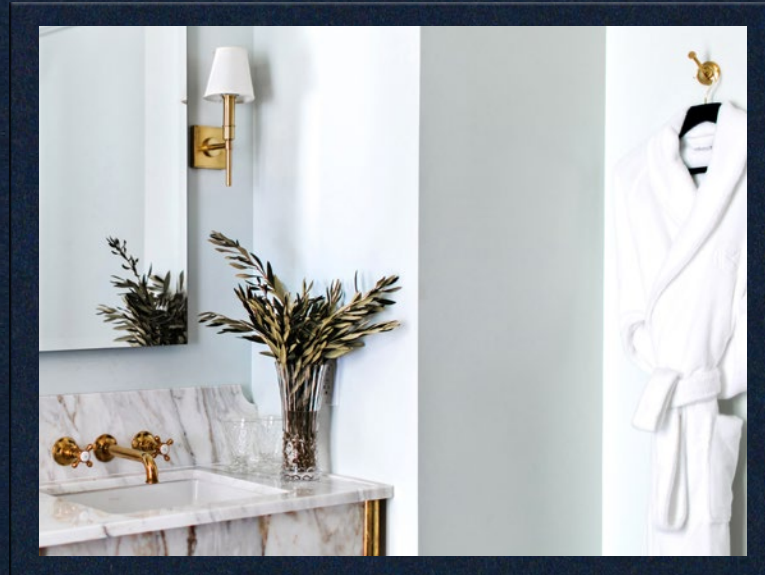
Alessandra
Trinchero, MBA

📞 786-448-1327

🌐 www.miamirealestateduo.com

✉ info@miamirealestateduo.com

2700 NW 2ND AVENUE
MIAMI, FL 33127



*Two Bedroom
TYPE C*



NOMAD
RESIDENCES
WYNWOOD

NoMAD

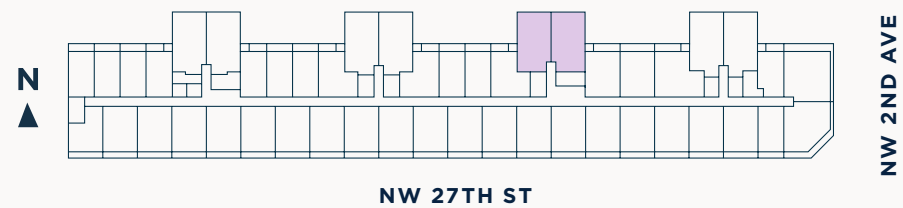
RESIDENCES
WYNWOOD



TWO BEDROOM TYPE C

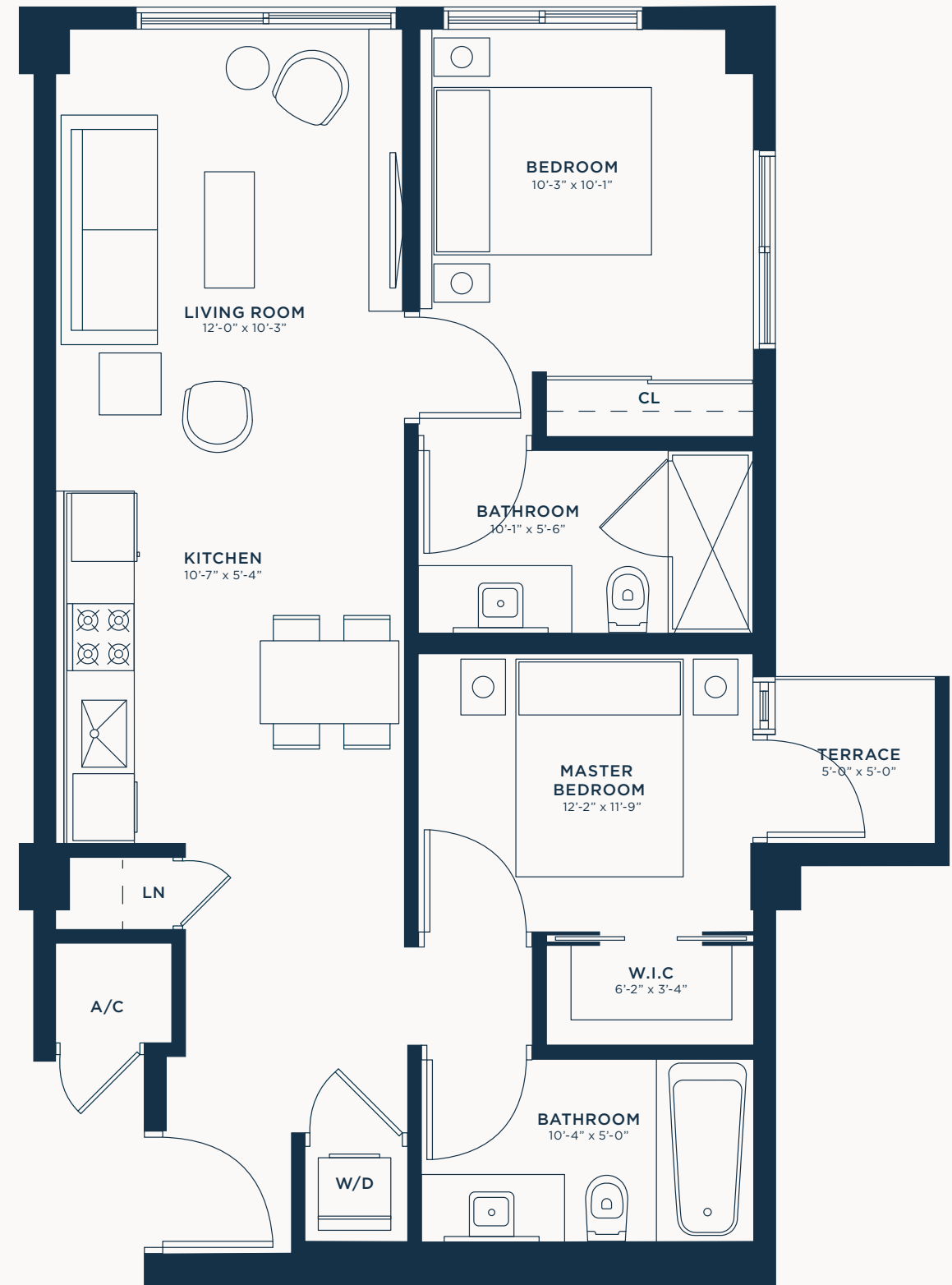
2 Bed | 2 Bath

INTERIOR 804 SF / 75 M2
TERRACE 25 SF / 2 M2
TOTAL 829 SF / 77 M2



EXCLUSIVE SALES AND MARKETING BY RELATED REALTY IN COLLABORATION WITH FORTUNE DEVELOPMENT SALES

The dimensions stated for this unit floor plan are approximate because there are various recognized methods for calculating the square footage of a unit. The square footage stated here is calculated from the exterior boundaries of the exterior walls to the centerline of interior demising walls without deductions for cutouts, curves, or architectural features. This method typically results in quoted dimensions greater than the dimensions that would be determined by using other accepted methods. The definition of "Unit" and the calculation method to be relied upon is set forth by the Developer, PRH G40 Property Owner, LLC, in Developer's prospectus and the method set forth in the Developer's prospectus may result in a square footage calculation less than the method used here. Consult the Developer's prospectus for information on what is offered with the Unit and the calculation of the Unit square footage and dimensions.





FORTUNE
DEVELOPMENT
— SALES —

Tricap

Yaimet Planos

📞 786-450-8357

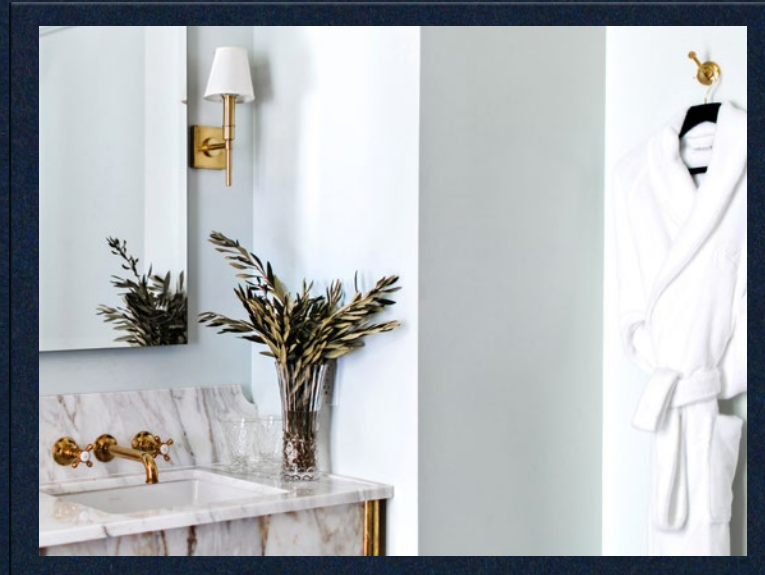
Alessandra
Trincheró, MBA

📞 786-448-1327

🌐 www.miamirealestateduo.com

✉ info@miamirealestateduo.com

2700 NW 2ND AVENUE
MIAMI, FL 33127



Two Bedroom
TYPE C2



NOMAD
RESIDENCES
WYNWOOD

NoMAD

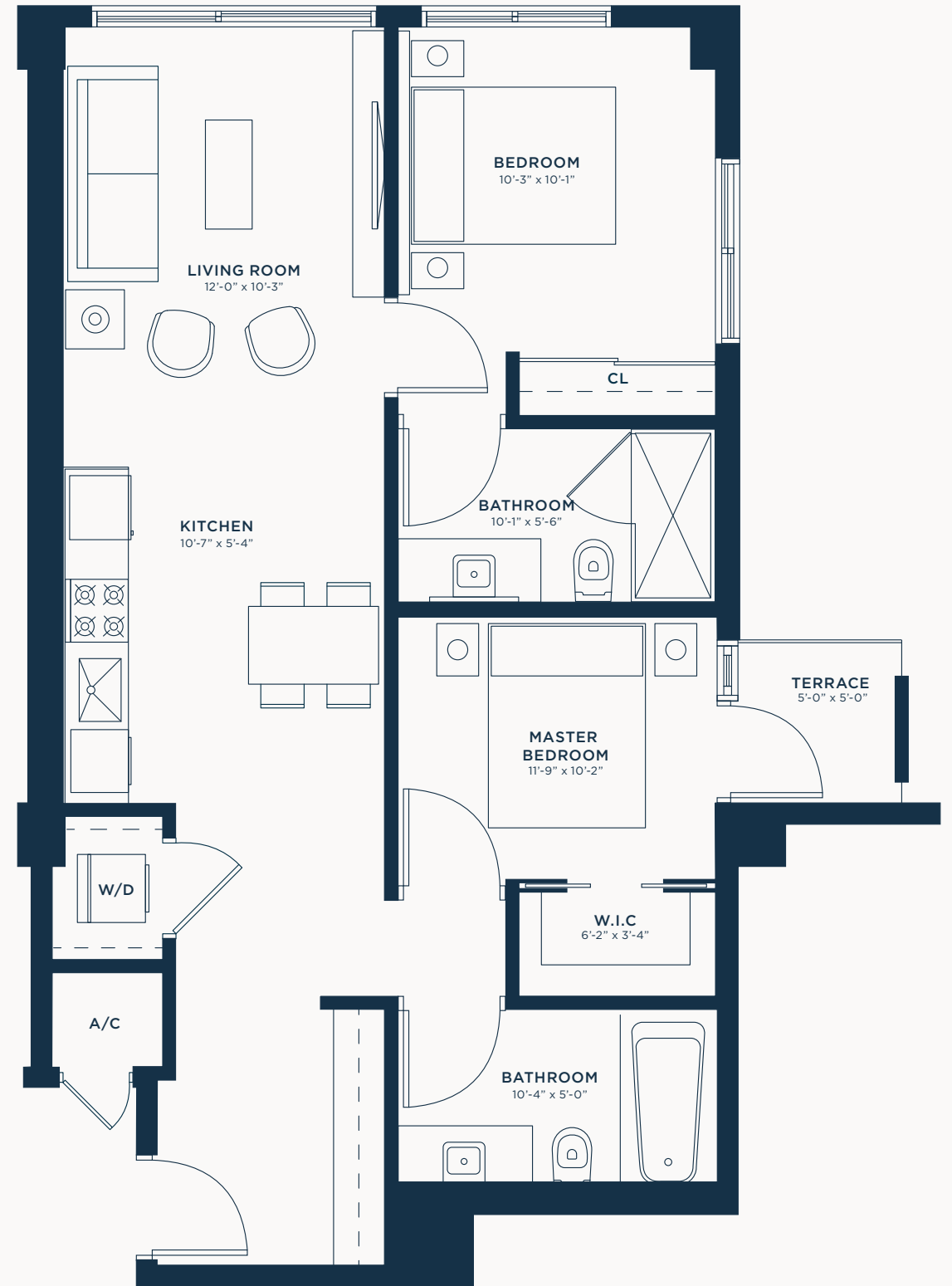
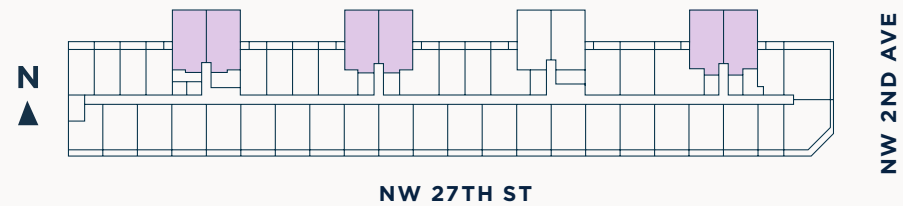
RESIDENCES
WYNWOOD



TWO BEDROOM TYPE C2

2 Bed | 2 Bath

INTERIOR	840 SF / 78 M2
TERRACE	25 SF / 2 M2
TOTAL	865 SF / 80 M2



EXCLUSIVE SALES AND MARKETING BY RELATED REALTY IN COLLABORATION WITH FORTUNE DEVELOPMENT SALES

The dimensions stated for this unit floor plan are approximate because there are various recognized methods for calculating the square footage of a unit. The square footage stated here is calculated from the exterior boundaries of the exterior walls to the centerline of interior demising walls without deductions for cutouts, curves, or architectural features. This method typically results in quoted dimensions greater than the dimensions that would be determined by using other accepted methods. The definition of "Unit" and the calculation method to be relied upon is set forth by the Developer, PRH G40 Property Owner, LLC, in Developer's prospectus and the method set forth in the Developer's prospectus may result in a square footage calculation less than the method used here. Consult the Developer's prospectus for information on what is offered with the Unit and the calculation of the Unit square footage and dimensions.





FORTUNE
DEVELOPMENT
— SALES —

Tricap

Yaimet Planos

📞 786-450-8357

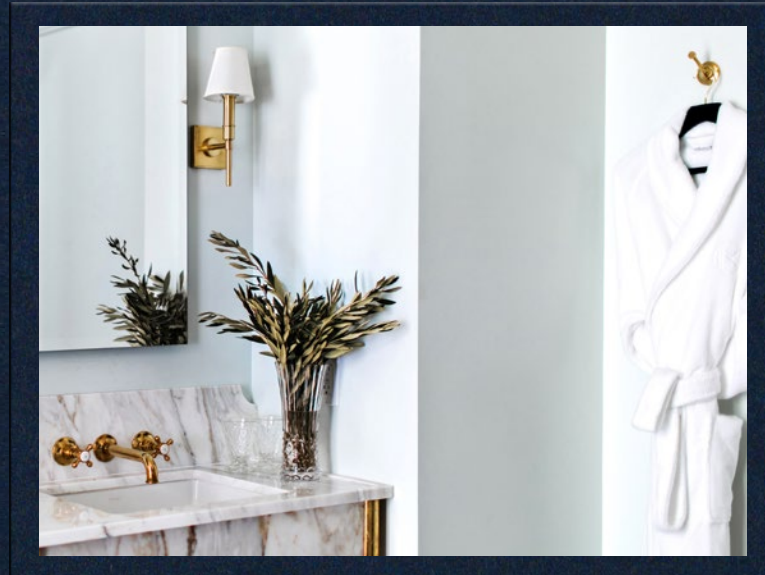
Alessandra
Trincherro, MBA

📞 786-448-1327

🌐 www.miamirealestateduo.com

✉ info@miamirealestateduo.com

2700 NW 2ND AVENUE
MIAMI, FL 33127



Studio
TYPE A ADA



NOMAD
RESIDENCES
WYNWOOD

NoMAD

RESIDENCES
WYNWOOD



STUDIO TYPE A ADA

Studio | 1 Bath

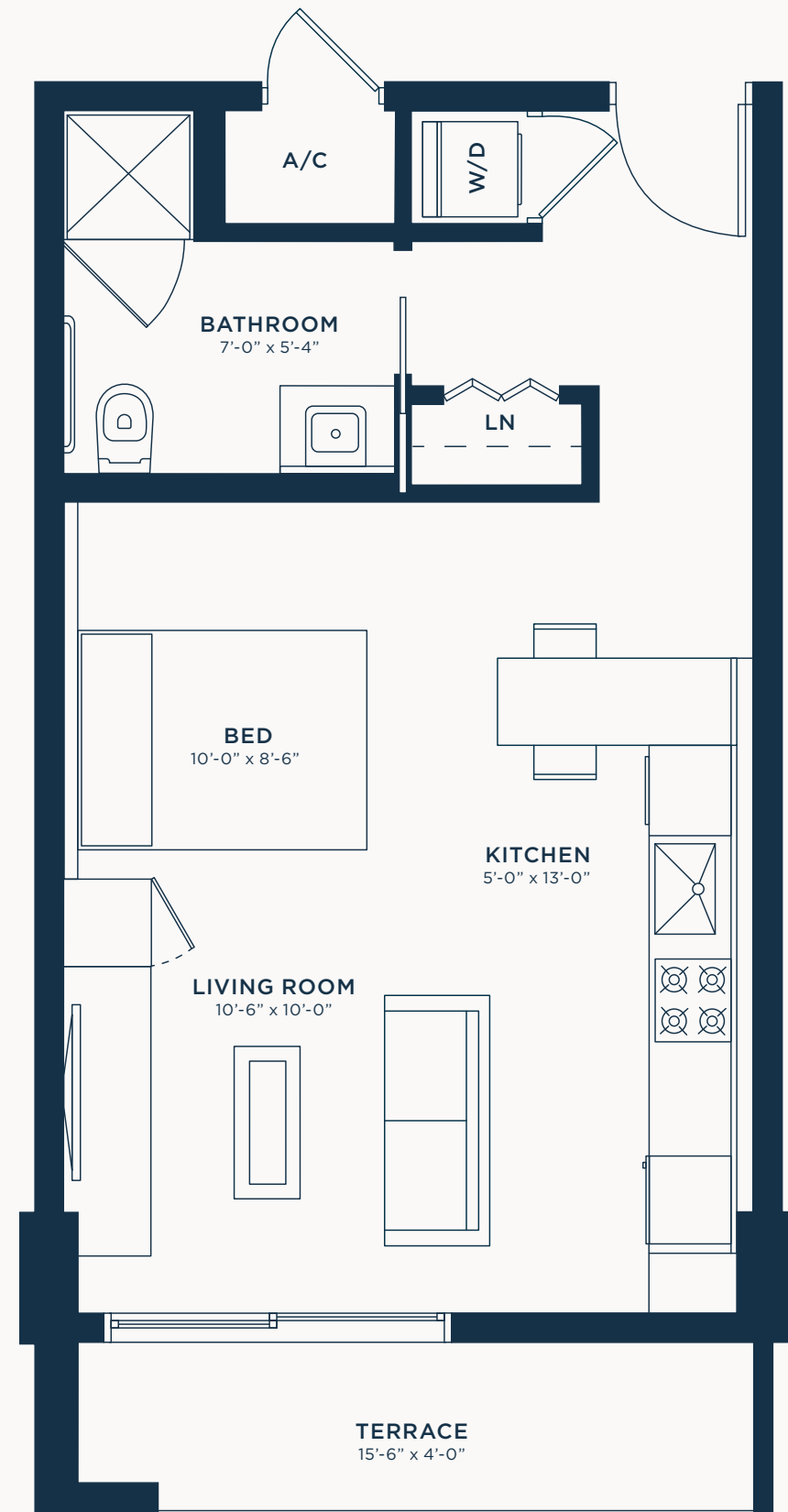
INTERIOR 479 SF / 45 M2
TERRACE 62 SF / 6 M2
TOTAL 541 SF / 50 M2

UNIT 21 ON FLOORS 4/5/6



EXCLUSIVE SALES AND MARKETING BY RELATED REALTY IN COLLABORATION WITH FORTUNE DEVELOPMENT SALES

The dimensions stated for this unit floor plan are approximate because there are various recognized methods for calculating the square footage of a unit. The square footage stated here is calculated from the exterior boundaries of the exterior walls to the centerline of interior demising walls without deductions for cutouts, curves, or architectural features. This method typically results in quoted dimensions greater than the dimensions that would be determined by using other accepted methods. The definition of "Unit" and the calculation method to be relied upon is set forth by the Developer, PRH G40 Property Owner, LLC, in Developer's prospectus and the method set forth in the Developer's prospectus may result in a square footage calculation less than the method used here. Consult the Developer's prospectus for information on what is offered with the Unit and the calculation of the Unit square footage and dimensions.





FORTUNE
DEVELOPMENT
— SALES —

Tricap

Yaimet Planos

📞 786-450-8357

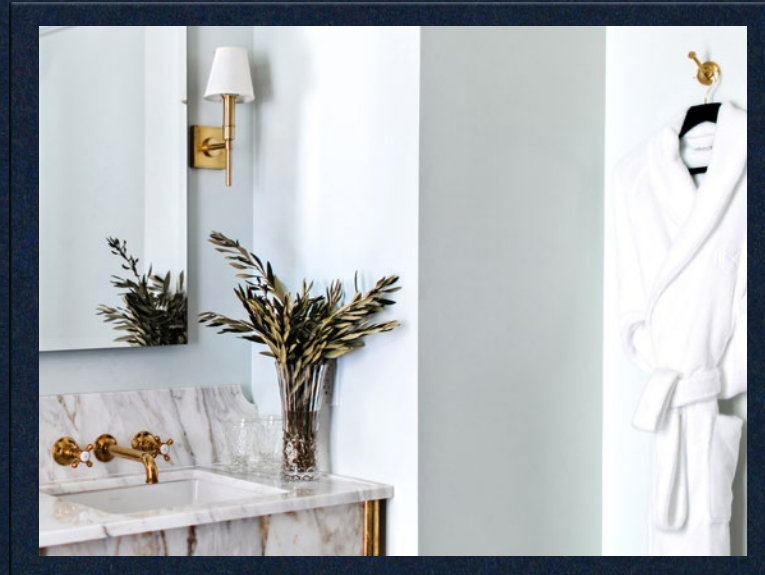
Alessandra
Trinchero, MBA

📞 786-448-1327

🌐 www.miamirealestateduo.com

✉ info@miamirealestateduo.com

2700 NW 2ND AVENUE
MIAMI, FL 33127



One Bedroom
TYPE A ADA



NOMAD
RESIDENCES
WYNWOOD

NoMAD

RESIDENCES
WYNWOOD

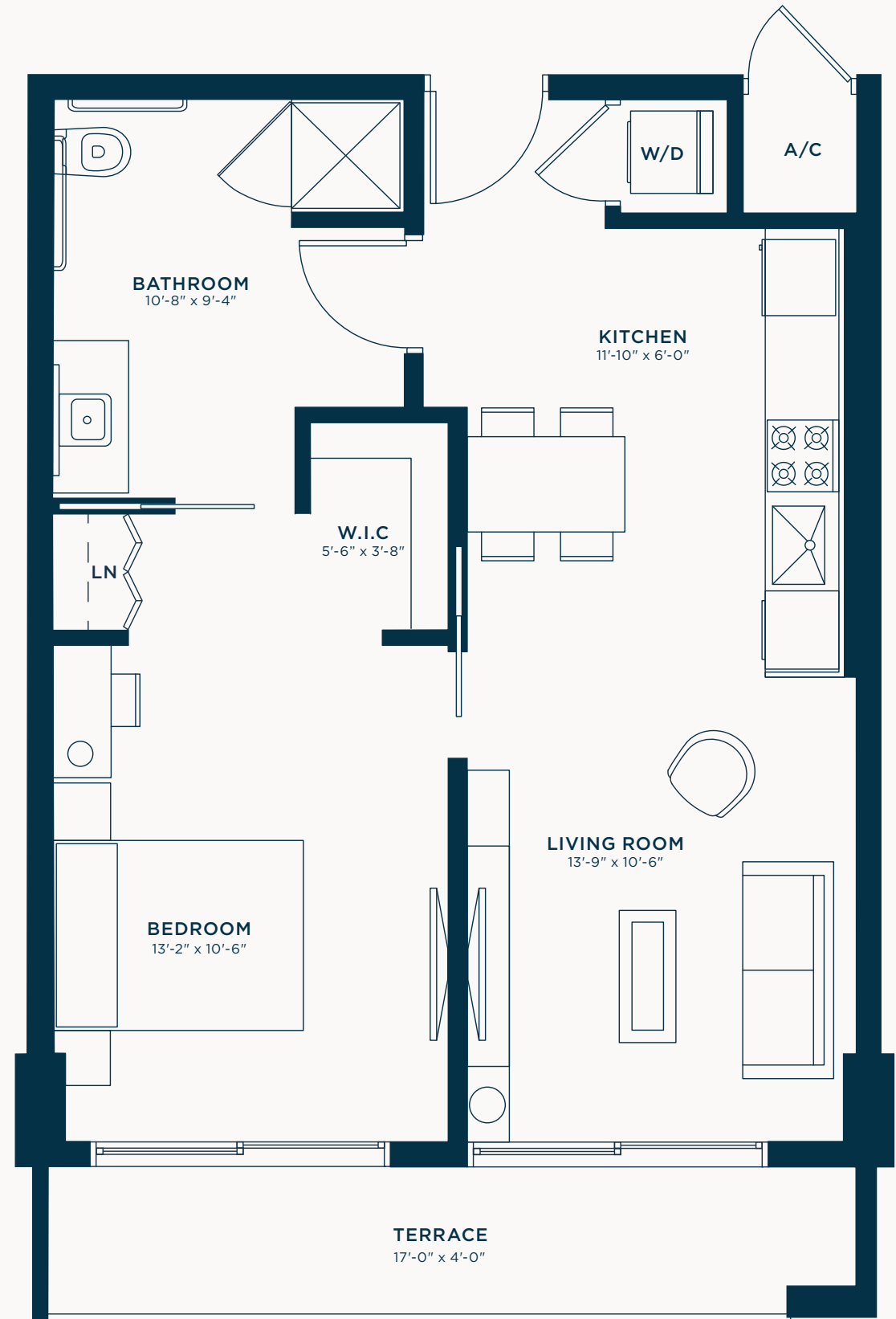


ONE BEDROOM TYPE A ADA

1 Bed | 1 Bath

INTERIOR	638 SF / 59 M2
TERRACE	82 SF / 8 M2
TOTAL	720 SF / 67 M2

UNITS 13 + 14 ON FLOORS 4/5/6



EXCLUSIVE SALES AND MARKETING BY RELATED REALTY IN COLLABORATION WITH FORTUNE DEVELOPMENT SALES

The dimensions stated for this unit floor plan are approximate because there are various recognized methods for calculating the square footage of a unit. The square footage stated here is calculated from the exterior boundaries of the exterior walls to the centerline of interior demising walls without deductions for cutouts, curves, or architectural features. This method typically results in quoted dimensions greater than the dimensions that would be determined by using other accepted methods. The definition of "Unit" and the calculation method to be relied upon is set forth by the Developer, PRH G40 Property Owner, LLC, in Developer's prospectus and the method set forth in the Developer's prospectus may result in a square footage calculation less than the method used here. Consult the Developer's prospectus for information on what is offered with the Unit and the calculation of the Unit square footage and dimensions.





FORTUNE
DEVELOPMENT
— SALES —

Tricap

Yaimet Planos

📞 786-450-8357

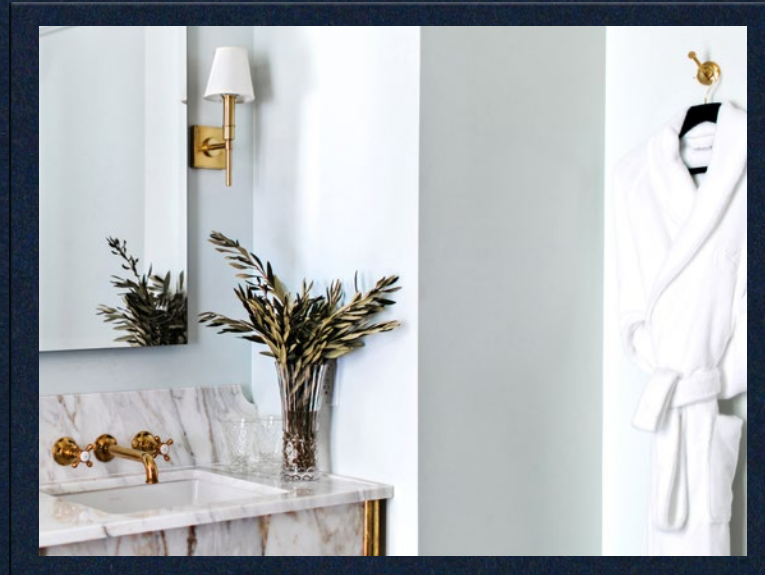
Alessandra
Trinchero, MBA

📞 786-448-1327

🌐 www.miamirealestateduo.com

✉ info@miamirealestateduo.com

2700 NW 2ND AVENUE
MIAMI, FL 33127



Two Bedroom
TYPE C ADA



NOMAD
RESIDENCES
WYNWOOD

NoMAD

RESIDENCES
WYNWOOD



TWO BEDROOM TYPE C ADA

2 Bed | 2 Bath

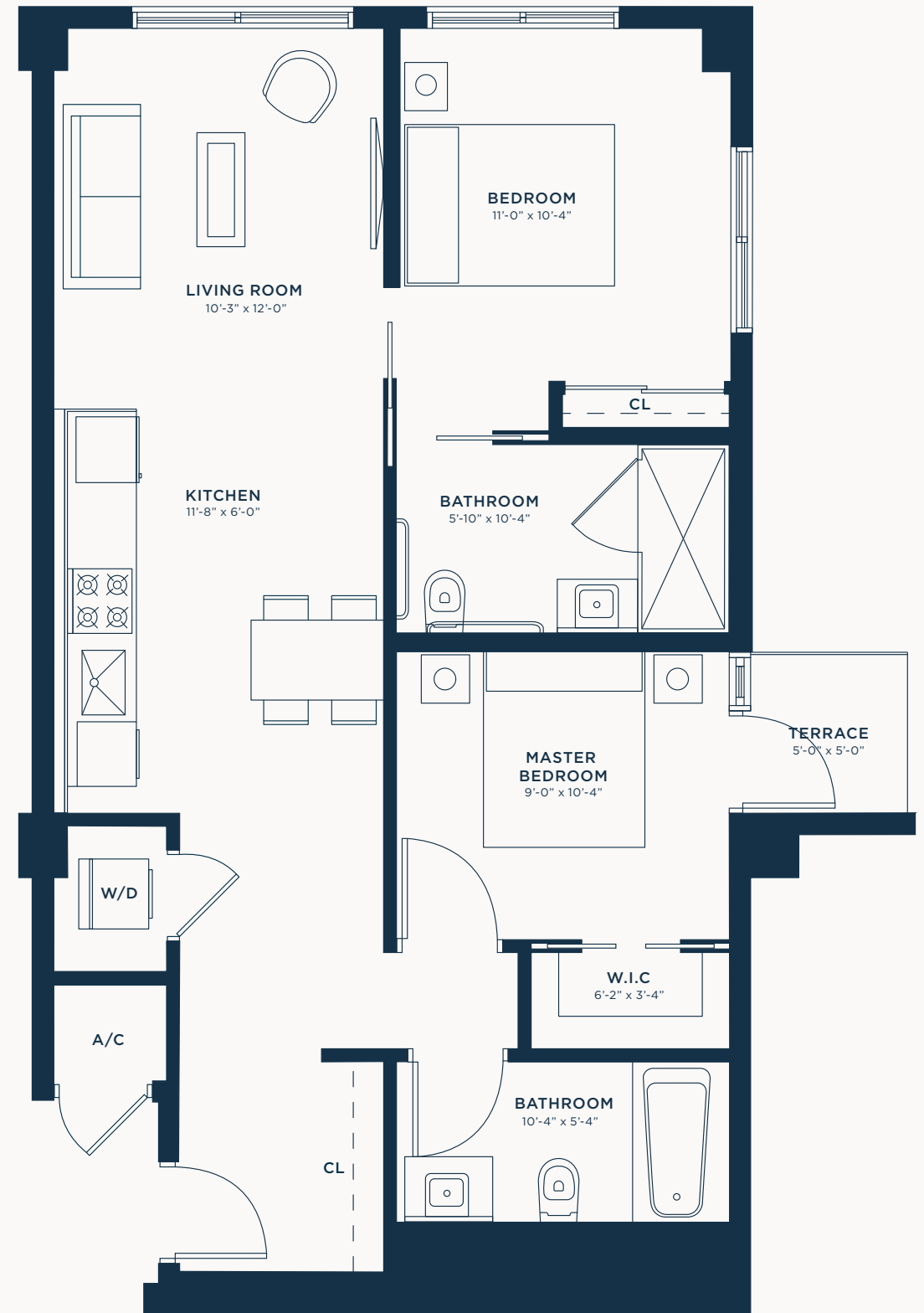
INTERIOR 804 SF / 75 M2
TERRACE 25 SF / 2 M2
TOTAL 829 SF / 77 M2

UNIT 43 ON FLOORS 4/5/6



EXCLUSIVE SALES AND MARKETING BY RELATED REALTY IN COLLABORATION WITH FORTUNE DEVELOPMENT SALES

The dimensions stated for this unit floor plan are approximate because there are various recognized methods for calculating the square footage of a unit. The square footage stated here is calculated from the exterior boundaries of the exterior walls to the centerline of interior demising walls without deductions for cutouts, curves, or architectural features. This method typically results in quoted dimensions greater than the dimensions that would be determined by using other accepted methods. The definition of "Unit" and the calculation method to be relied upon is set forth by the Developer, PRH G40 Property Owner, LLC, in Developer's prospectus and the method set forth in the Developer's prospectus may result in a square footage calculation less than the method used here. Consult the Developer's prospectus for information on what is offered with the Unit and the calculation of the Unit square footage and dimensions.





RELATED

FORTUNE
DEVELOPMENT
— SALES —

Tricap

Yaimet Planos

 786-450-8357

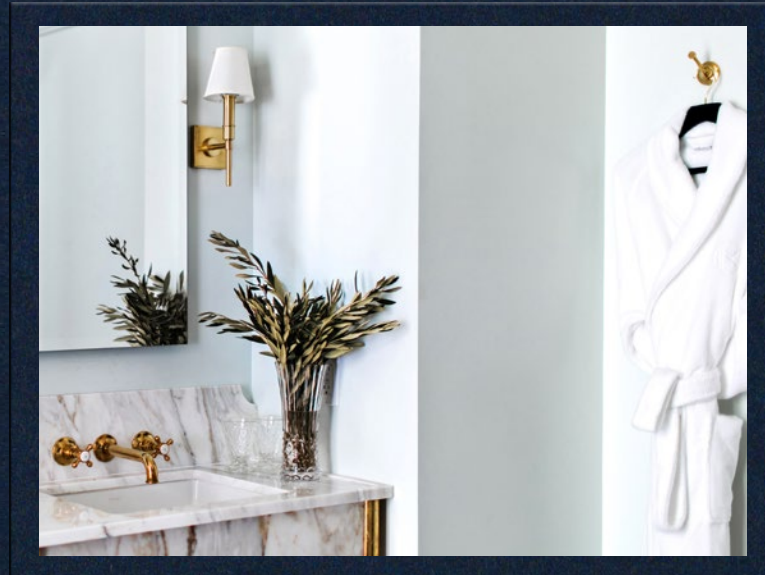
Alessandra
Trinchero, MBA

 786-448-1327

 www.miamirealestateduo.com

 info@miamirealestateduo.com

2700 NW 2ND AVENUE
MIAMI, FL 33127



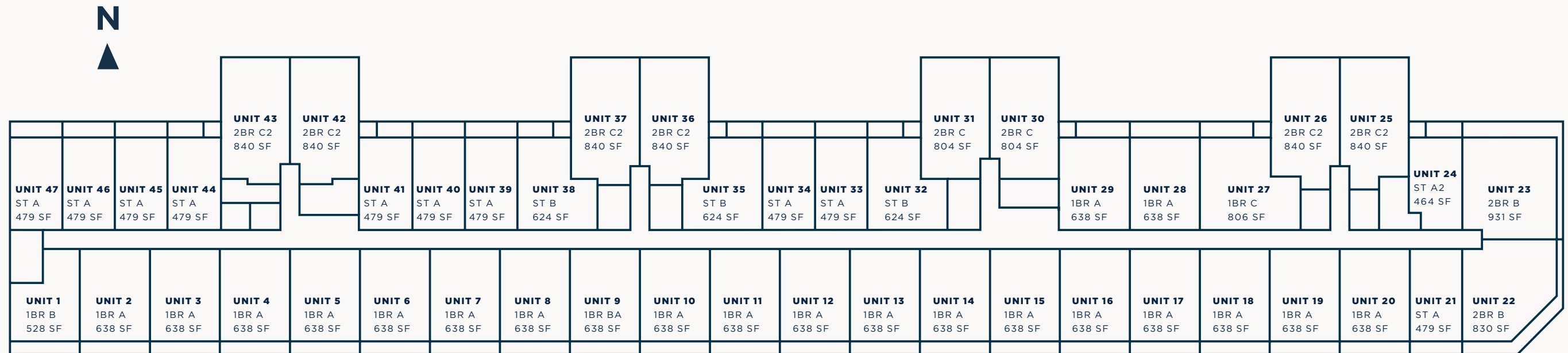
Property Overview



NOMAD
RESIDENCES
WYNWOOD

NOMAD

RESIDENCES
WYNWOOD



SITE AREA

1.25 Acres

FLOORS

- Floor -1** Basement (Garage)
- Floor 0** Ground Floor (Retail, Paseo & Lobbies)
- Mezzanine** Garage
- Floors 2-8** Residences
- Floor 9** Pool Deck, Amenities & Restaurant



EXCLUSIVE SALES AND MARKETING BY RELATED REALTY IN COLLABORATION WITH FORTUNE DEVELOPMENT SALES

The dimensions stated for this unit floor plan are approximate because there are various recognized methods for calculating the square footage of a unit. The square footage stated here is calculated from the exterior boundaries of the exterior walls to the centerline of interior demising walls without deductions for cutouts, curves, or architectural features. This method typically results in quoted dimensions greater than the dimensions that would be determined by using other accepted methods. The definition of "Unit" and the calculation method to be relied upon is set forth by the Developer, PRH G40 Property Owner, LLC, in Developer's prospectus and the method set forth in the Developer's prospectus may result in a square footage calculation less than the method used here. Consult the Developer's prospectus for information on what is offered with the Unit and the calculation of the Unit square footage and dimensions.





FORTUNE
DEVELOPMENT
— SALES —

Tricap

Yaimet Planos

📞 786-450-8357

Alessandra
Trinchero, MBA

📞 786-448-1327

🌐 www.miamirealestateduo.com

✉ info@miamirealestateduo.com

2700 NW 2ND AVENUE
MIAMI, FL 33127