



WITH ARMANI/CASA,
WE HAVE CREATED
A WORLD DEFINED BY
TIMELESS ELEGANCE
AND GRACE.

 ORAL REPRESENTATIONS CANNOT BE RELIED UPON AS CORRECTLY STATING REPRESENTATIONS OF THE DEVELOPER. FOR CORRECT REPRESENTATIONS, MAKE REFERENCE TO THIS BROCHURE AND TO THE DOCUMENTS REQUIRED BY SECTION 718.503, FLORIDA STATUTES, TO BE FURNISHED BY A DEVELOPER TO A BUYER OR LESSEE. UNITS IN THIS CONDOMINIUM ARE SUBJECT TO TIMESHARE ESTATES.

Obtain the Property Report required by Federal law and read it before signing anything. No Federal agency has judged the merits or value, if any, of this property.



Pelli Clarke Pelli's contemporary glass tower appears at one with the crystal clear water of the Atlantic Ocean. Transparent terraces let you step into a dreamlike space suspended between earth and sky. Interiors by Armani/Casa create a world of serenity and elegance, and beautifully designed amenities offer the ultimate in true luxury.

BUILDING FEATURES AND AMENITIES

BUILDING

- Soaring 649 foot tall modern glass tower by internationally acclaimed architect Cesar Pelli
- Interiors by Armani/Casa under the artistic direction of legendary designer Giorgio Armani
- Landscaping by award-winning Swiss landscape architect Enzo Enea
- Elegant porte cochère entry with Atlantic Ocean views and water feature
- Sophisticated two-story lobby exquisitely appointed with Armani/Casa furniture
- Professionally curated collection of museum-quality art, including monumental sculptures by Sandro Chia and Sinisa Kukec and works by Venice Biennale artist Marcelo Legrand

RESIDENCES

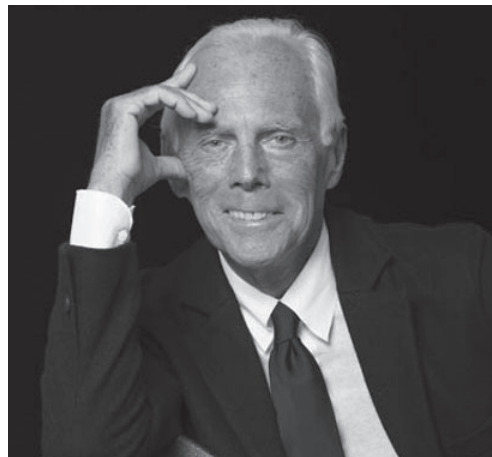
- Private high-speed elevator access to all residences
- Breathtaking Atlantic Ocean views through floor-to-ceiling windows
- Spacious interiors with elegant smooth ceilings rising to 10 feet
- Expansive private balconies with glass railings

LIFESTYLE

- Lobby level Armani Privé lounge
- Elevated, lushly landscaped oceanfront terrace with a heated swimming pool, hot tub, and pool attendants providing food and beverage service
- Private oceanfront restaurant and bar with outdoor seating
- Exclusive beach amenities, including food and beverage service, beach attendants, chaise lounges and umbrellas
- Entertainment rooms furnished by Armani/Casa, including Movie Theater, Cigar Room, and Children's Playroom
- State-of-the-art fitness center overlooking the Atlantic Ocean
- Exclusive spa including a Turkish Hamman with indoor and outdoor treatment rooms
- 24-hour valet services
- 24-hour security and multi-lingual concierge service



DESIGNED AND DEVELOPED BY AN INTERNATIONALLY RENOWNED TEAM



GIORGIO ARMANI
ARMANI/CASA

Giorgio Armani is the president and CEO of one of the world's leading fashion and lifestyle design houses. He presides over a stable of collections that includes his signature Giorgio Armani line, Giorgio Armani Privé, Armani Collezioni, Emporio Armani, AJ I Armani Jeans, A/X Armani Exchange, and Armani/Casa.

Mr. Armani's interior design work includes a series of Armani Hotels & Resorts created with Emaar Properties, for which he defined the style and mood of a new international chain of hotels, resorts, and luxury residences in the world's leading cities and tourist destinations.

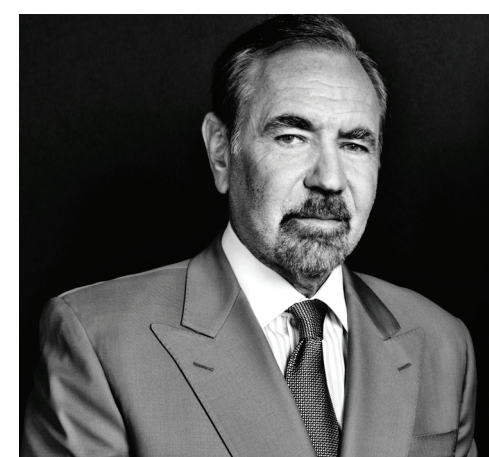
In 2000, New York's Guggenheim Museum celebrated Mr. Armani's career with an exhibition that has since been seen worldwide, including at the Guggenheim Bilbao, London's Royal Academy of Arts, Berlin's Neue Nationalgalerie, Rome's Terme di Diocleziano, Tokyo's Mori Arts Museum and The Shanghai Art Museum.



CÉSAR PELLI
PELLI CLARKE PELLI

Led by César Pelli, Fred W. Clarke, and Rafael Pelli, Pelli Clarke Pelli Architects has designed many prestigious projects worldwide, including the World Financial Center in New York, the Petronas Towers in Malaysia, and the International Finance Centre in Hong Kong.

The firm's work has been internationally recognized with hundreds of awards for design excellence, including over 40 design awards from national, regional and local chapters of the American Institute of Architects. In 2004, the firm was given the Aga Khan Award for Architecture for the Petronas Towers. In 1995, the AIA awarded César Pelli the Gold Medal, which recognizes a lifetime of distinguished achievement and outstanding contributions. In 1991, César Pelli was selected as one of the 10 most influential living American architects. In 1989, Pelli Clarke Pelli was the recipient of the AIA's Firm Award.



JORGE M. PÉREZ
THE RELATED GROUP

Jorge M. Pérez is the founder, chairman, and CEO of The Related Group, the nation's leading developer of multifamily residences. In August 2005, Time Magazine named Pérez one of the top 25 most influential Hispanic people in the United States. Under his direction, The Related Group and its affiliates have redefined the South Florida landscape.

Since its inception more than a quarter of a century ago, the firm has developed and/or managed more than 80,000 apartments and condominium residences. The Related Group is one of the largest Hispanic-owned businesses in the United States. In 2006, the company reported sales of more than \$1.4 billion. Its premier portfolio of properties in South Florida includes One Ocean and Marea South of Fifth in South Beach and SLS Hotel & Residences and Brickell Heights in Brickell.



GIL DEZER
DEZER DEVELOPMENT

Gil Dezer is the president of Dezer Development, which was founded in 1970 by his father, Michael Dezer, a creative and innovative real estate visionary. Over the past 42 years, the company has grown to encompass unique and strategic holdings in New York, Florida, and Las Vegas.

The Dezers began acquiring oceanfront hotel properties in Sunny Isles Beach, Florida, in 1995, and are credited as major players in the rebirth of the area. In addition to their Miami Beach properties, the Dezers' New York holdings encompass more than 20 properties — including the Simon Dezer Building on Fifth Avenue, the Dezerland, the Chelsea Antiques Building, The Chelsea Design Center, and the Chelsea Arts Forum — comprising a total of more than 1 million square feet of loft office space in the trendy Chelsea neighborhood.

A MUSEUM-QUALITY COLLECTION OF ART



SANDRO CHIA

Artist Sandro Chia has been part of the Italian "Transavanguardia" movement, exhibiting in many of the world's premier museums and galleries as well as the Paris, São Paulo, and Venice Biennales. In 2003, three important works of his were acquired for the permanent collection of the Italian Senate, and in 2005 two monumental sculptures were acquired for the headquarters of the Province of Rome.



SINISA KUKEC

Incorporating complex light projections, otherworldly sculptural forms, and a notable reliance on the dynamics of natural landscapes, Croatian artist Sinisa Kukec synthesizes prefabricated elements to reflect wholly unusual, wholly original three-dimensional states of flux. Solo exhibitions of his work have been held in South Korea, the Netherlands, Philadelphia, Aspen, and Miami, where Kukec now lives and works.



MARCELO LEGRAND

Uruguayan artist Marcelo Legrand began studying painting in 1977 with master artist Hector Sgarbi. During the 1980s, he worked exclusively with graphite on paper, producing critically acclaimed work. Legrand's work has been exhibited worldwide, including at the Museum of Contemporary Art of Caracas in Venezuela, the Corcoran Gallery of Art in Washington, D.C., and at the National Museum of Visual Arts in Montevideo, Uruguay.

