

R E S I D E N C E S B Y

 **ARMANI / CASA**

Architecture by César Pelli

Residence E

Residence A

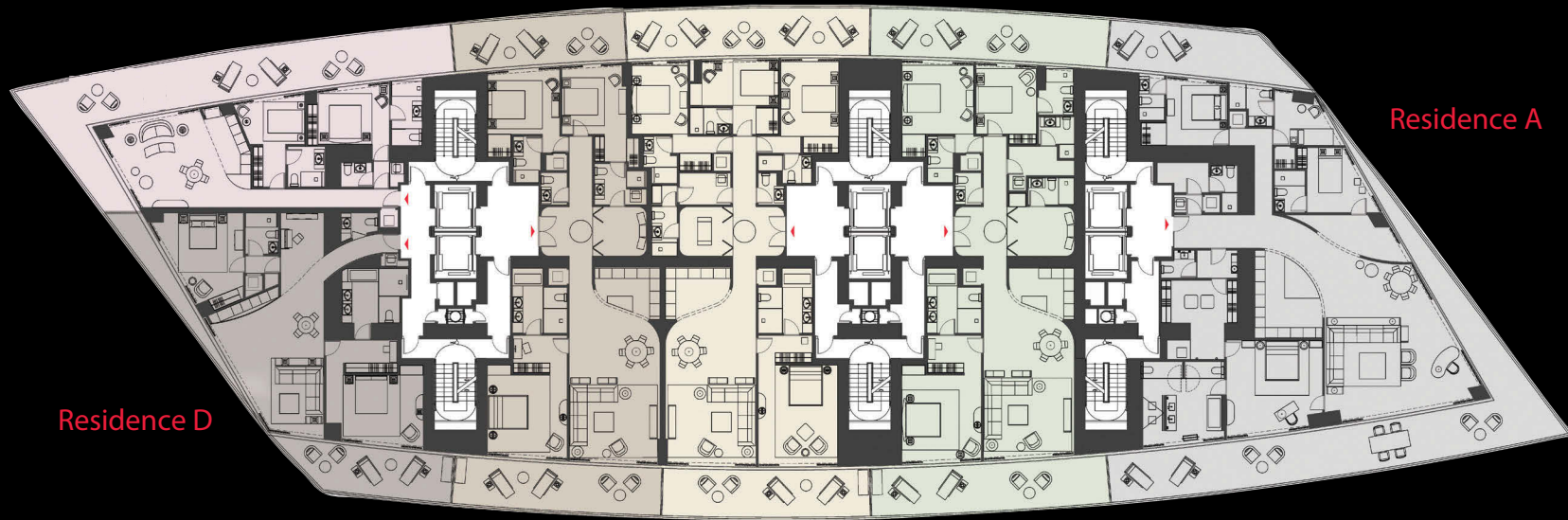
Residence D

Residence C

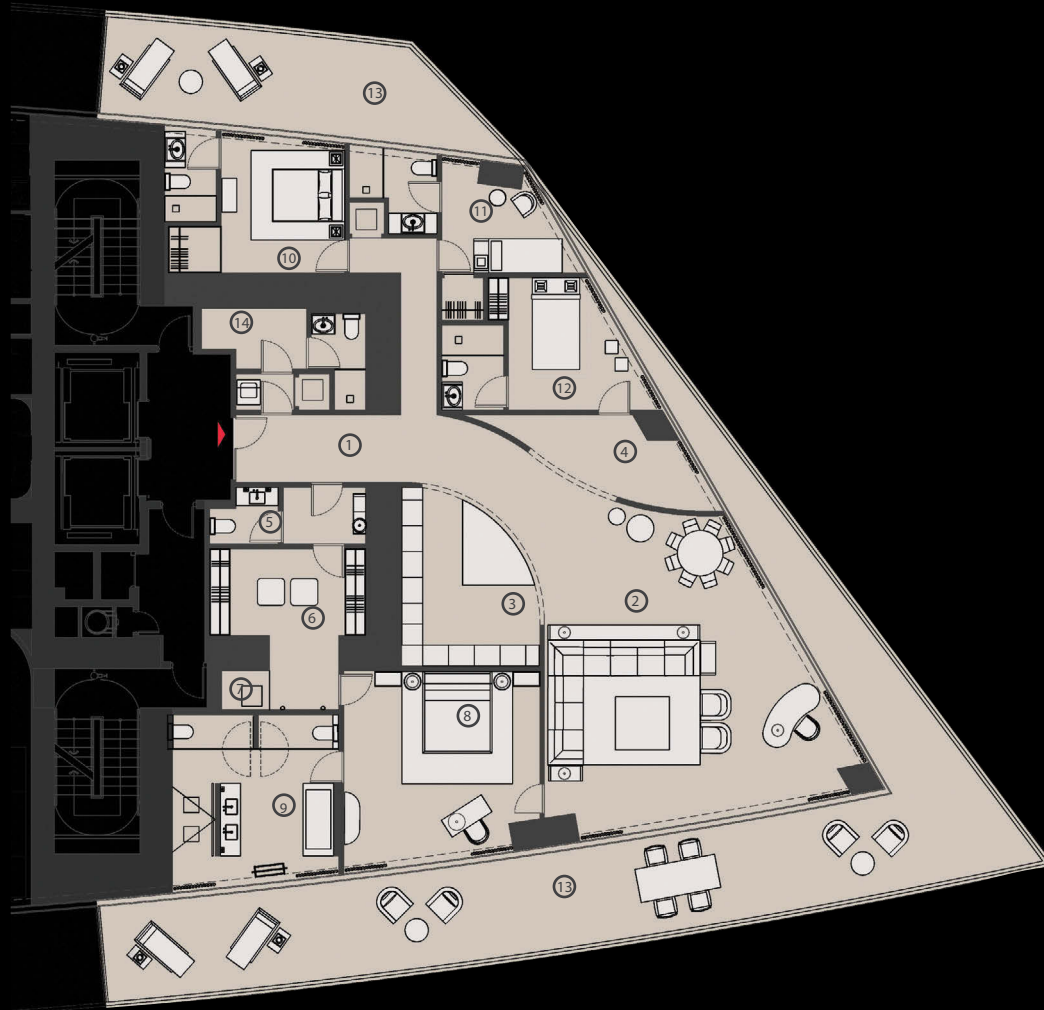
Residence B

Residence Cmod

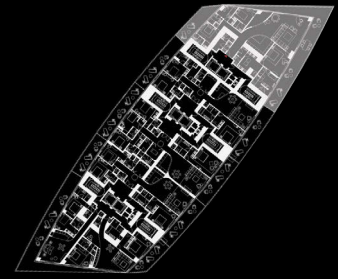
OCEAN



Depending on the method of calculation, the quoted square footage of any Unit may vary. The dimensions in the Unit shown in these floor plans have been calculated from the exterior boundaries of the exterior walls to the centerline of interior demising walls, including common elements such as structural walls and other interior structural components of the building and are greater than the dimensions that would be determined by using the description and definition of the "Unit" set forth in the Prospectus and the Declaration. The measurements of a room set forth on this floor plan are generally taken at the greatest points of each given room (as if the room were a perfect rectangle) without regard for any cutouts. Accordingly, the area of the actual room will typically smaller than the product obtained by multiplying the stated length by the stated width. All dimensions are approximate and may vary with actual construction and may change prior to completion. Any and all furnishings, finishes, or décor illustrated are not included with the purchase of the Unit. Consult the Prospectus for information regarding what is offered with the Unit and for the calculation of the Unit square footage and dimensions.




COLLINS AVENUE



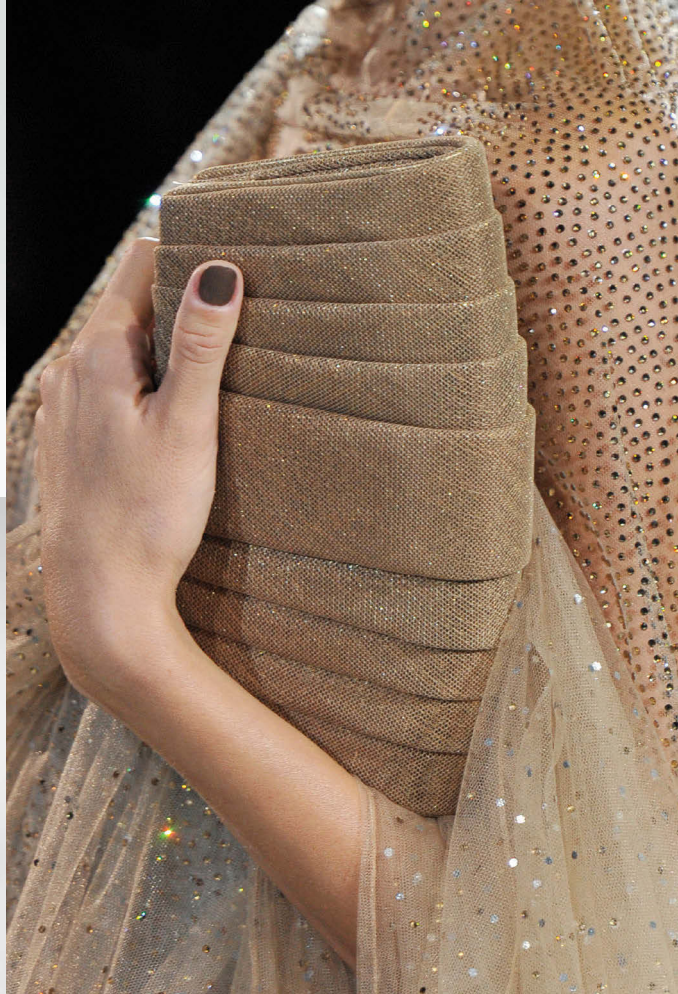
OCEAN

Residence A
4 Bedrooms + Service
5.5 Baths

- 1. Entrance
- 2. Living and dining room
- 3. Kitchen
- 4. Den
- 5. Powder room
- 6. Master walk-in closet
- 7. Master midnight bar
- 8. Master bedroom
- 9. Master bathroom
- 10. Bedroom 2 and bathroom
- 11. Bedroom 3 and bathroom
- 12. Bedroom 4 and bathroom
- 13. Terrace
- 14. Maid room and service area

 Depending on the method of calculation, the quoted square footage of any Unit may vary. The dimensions in the Unit shown in these floor plans have been calculated from the exterior boundaries of the exterior walls to the centerline of interior demising walls, including common elements such as structural walls and other interior structural components of the building and are greater than the dimensions that would be determined by using the description and definition of the "Unit" set forth in the Prospectus and the Declaration. The measurements of a room set forth on this floor plan are generally taken at the greatest points of each given room (as if the room were a perfect rectangle) without regard for any cutouts. Accordingly, the area of the actual room will typically smaller than the product obtained by multiplying the stated length by the stated width. All dimensions are approximate and may vary with actual construction and may change prior to completion. Any and all furnishings, finishes, or décor illustrated are not included with the purchase of the Unit. Consult the Prospectus for information regarding what is offered with the Unit and for the calculation of the Unit square footage and dimensions.









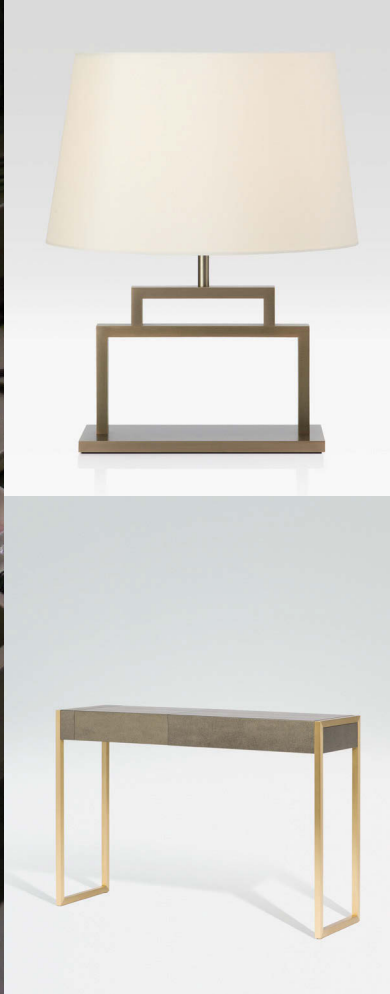


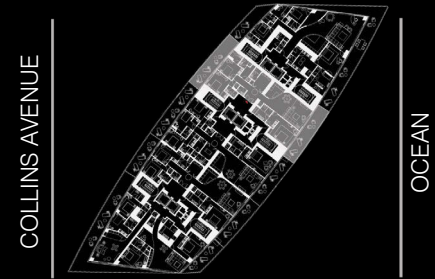
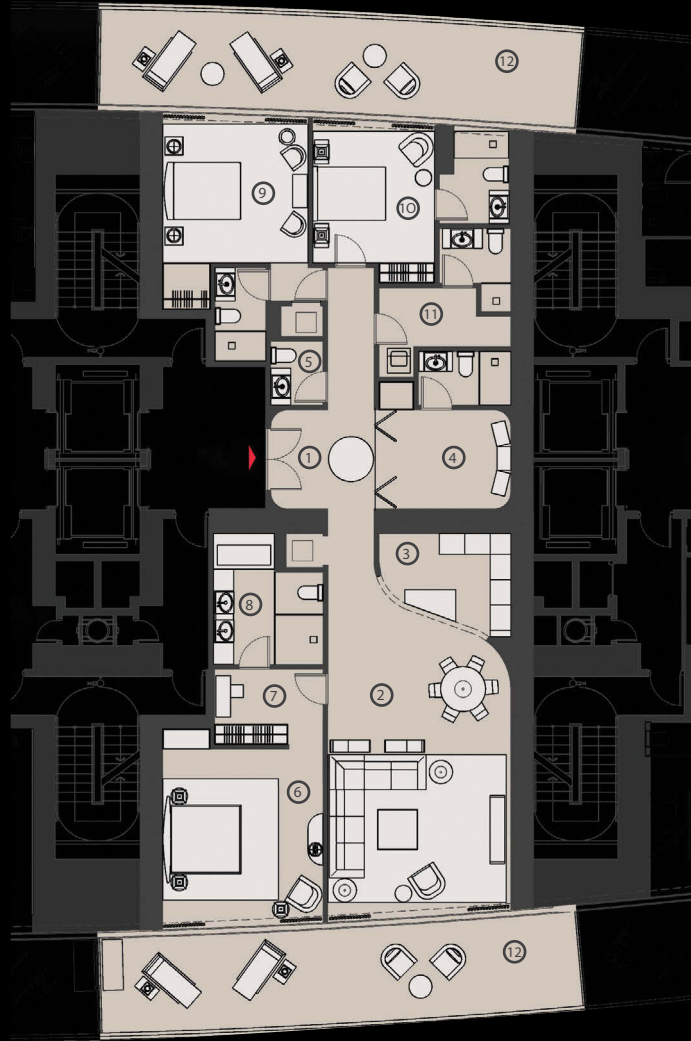












Residence Cmod
3 Bedrooms + Den + Service
5.5 Baths

1. Entrance
2. Living and dining room
3. Kitchen
4. Den and bathroom
5. Powder room
6. Master bedroom
7. Master walk-in closet
8. Master bathroom
9. Bedroom 2 and bathroom
10. Bedroom 3 and bathroom
11. Maid room and service area
12. Terrace

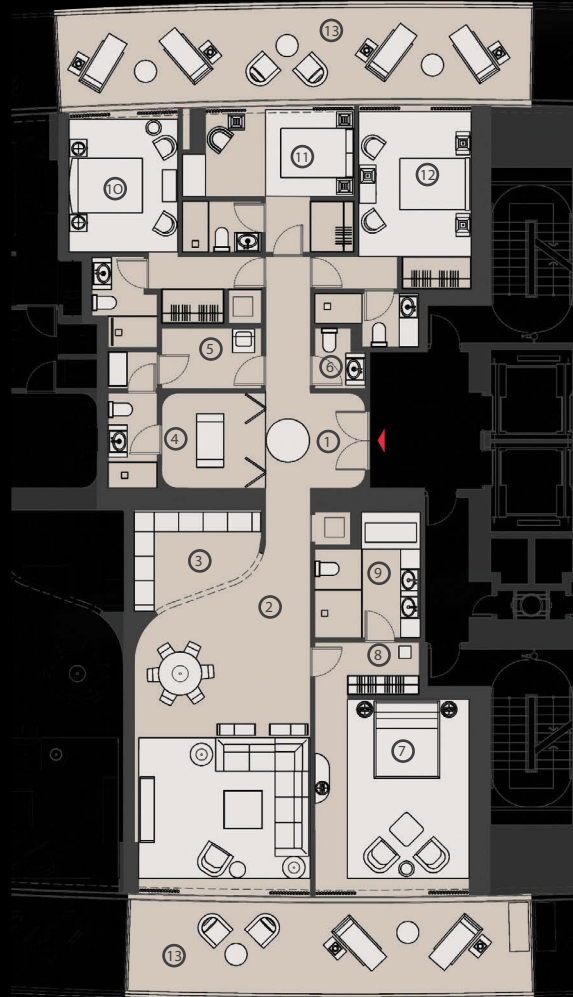


Depending on the method of calculation, the quoted square footage of any Unit may vary. The dimensions in the Unit shown in these floor plans have been calculated from the exterior boundaries of the exterior walls to the centerline of interior demising walls, including common elements such as structural walls and other interior structural components of the building and are greater than the dimensions that would be determined by using the description and definition of the "Unit" set forth in the Prospectus and the Declaration. The measurements of a room set forth on this floor plan are generally taken at the greatest points of each given room (as if the room were a perfect rectangle) without regard for any cutouts. Accordingly, the area of the actual room will typically smaller than the product obtained by multiplying the stated length by the stated width. All dimensions are approximate and may vary with actual construction and may change prior to completion. Any and all furnishings, finishes, or décor illustrated are not included with the purchase of the Unit. Consult the Prospectus for information regarding what is offered with the Unit and for the calculation of the Unit square footage and dimensions.

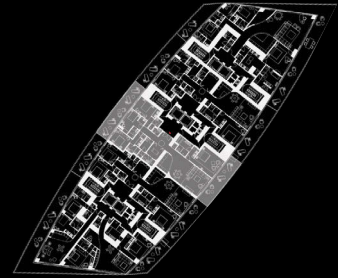









COLLINS AVENUE



OCEAN

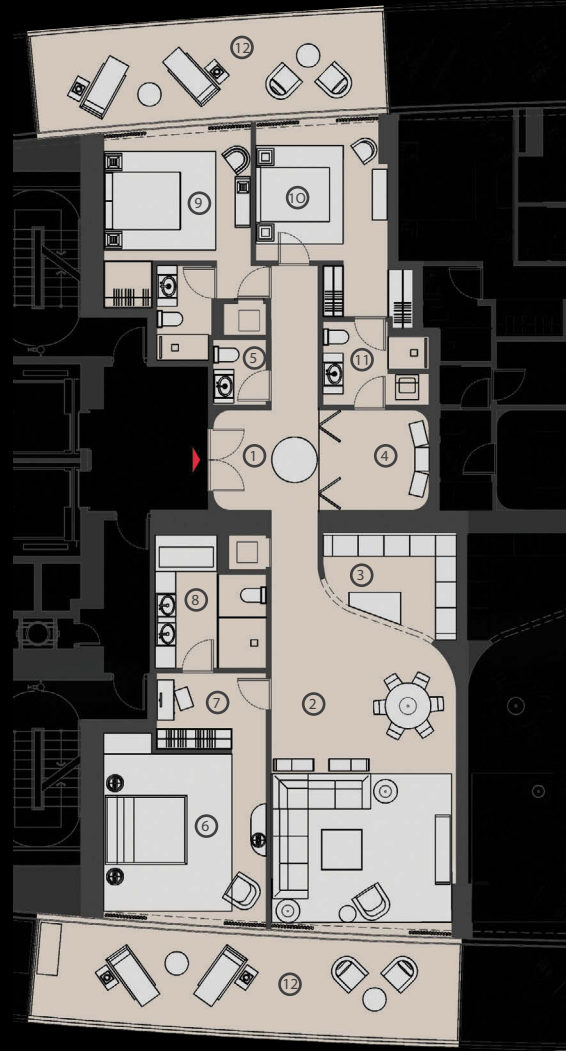
Residence B
4 Bedrooms + Den + Service
5.5 Baths

- 1. Entrance
- 2. Living and dining room
- 3. Kitchen
- 4. Den and bathroom
- 5. Maid room and service area
- 6. Powder room
- 7. Master bedroom
- 8. Master walk-in closet
- 9. Master bathroom
- 10. Bedroom 2 and bathroom
- 11. Bedroom 3 and bathroom
- 12. Bedroom 4 and bathroom
- 13. Terrace

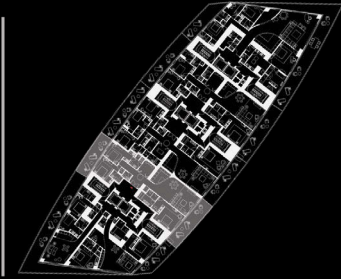
 Depending on the method of calculation, the quoted square footage of any Unit may vary. The dimensions in the Unit shown in these floor plans have been calculated from the exterior boundaries of the exterior walls to the centerline of interior demising walls, including common elements such as structural walls and other interior structural components of the building and are greater than the dimensions that would be determined by using the description and definition of the "Unit" set forth in the Prospectus and the Declaration. The measurements of a room set forth on this floor plan are generally taken at the greatest points of each given room (as if the room were a perfect rectangle) without regard for any cutouts. Accordingly, the area of the actual room will typically smaller than the product obtained by multiplying the stated length by the stated width. All dimensions are approximate and may vary with actual construction and may change prior to completion. Any and all furnishings, finishes, or décor illustrated are not included with the purchase of the Unit. Consult the Prospectus for information regarding what is offered with the Unit and for the calculation of the Unit square footage and dimensions.







COLLINS AVENUE



OCEAN

Residence C
3 Bedrooms + Den
3.5 Baths

1. Entrance
2. Living and dining room
3. Kitchen
4. Den
5. Powder room
6. Master bedroom
7. Master walk-in closet
8. Master bathroom
9. Bedroom 2 and bathroom
10. Bedroom 3 and bathroom
11. Maid room and service area
12. Terrace



Depending on the method of calculation, the quoted square footage of any Unit may vary. The dimensions in the Unit shown in these floor plans have been calculated from the exterior boundaries of the exterior walls to the centerline of interior demising walls, including common elements such as structural walls and other interior structural components of the building and are greater than the dimensions that would be determined by using the description and definition of the "Unit" set forth in the Prospectus and the Declaration. The measurements of a room set forth on this floor plan are generally taken at the greatest points of each given room (as if the room were a perfect rectangle) without regard for any cutouts. Accordingly, the area of the actual room will typically smaller than the product obtained by multiplying the stated length by the stated width. All dimensions are approximate and may vary with actual construction and may change prior to completion. Any and all furnishings, finishes, or décor illustrated are not included with the purchase of the Unit. Consult the Prospectus for information regarding what is offered with the Unit and for the calculation of the Unit square footage and dimensions.

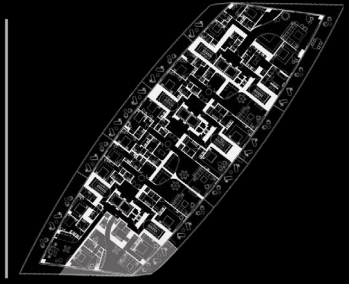









COLLINS AVENUE



OCEAN

Residence D
2 Bedrooms + Den
2.5 Baths

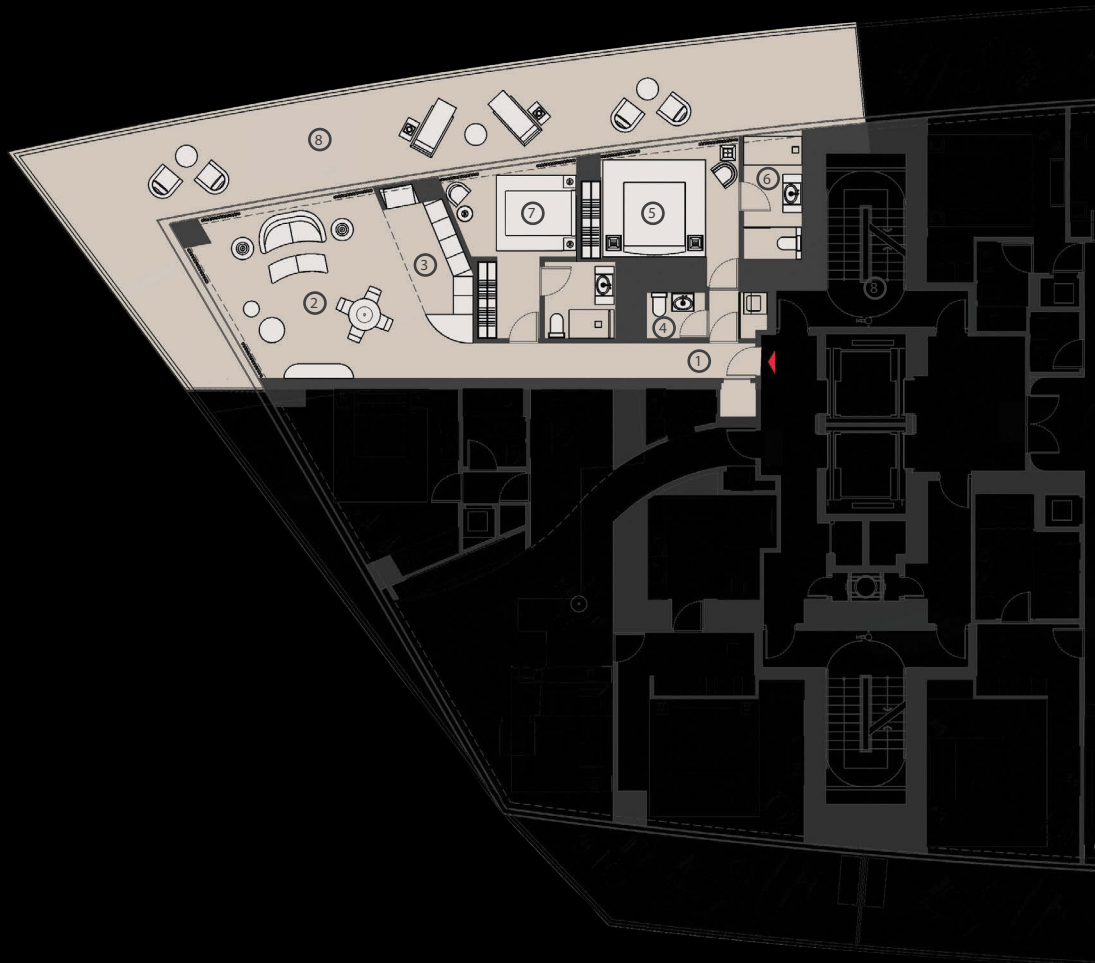
- 1. Entrance
- 2. Living and dining room
- 3. Kitchen
- 4. Powder room
- 5. Master bedroom
- 6. Master walk-in closet
- 7. Master bathroom
- 8. Bedroom 2 and bathroom
- 9. Den
- 10. Terrace

 Depending on the method of calculation, the quoted square footage of any Unit may vary. The dimensions in the Unit shown in these floor plans have been calculated from the exterior boundaries of the exterior walls to the centerline of interior demising walls, including common elements such as structural walls and other interior structural components of the building and are greater than the dimensions that would be determined by using the description and definition of the "Unit" set forth in the Prospectus and the Declaration. The measurements of a room set forth on this floor plan are generally taken at the greatest points of each given room (as if the room were a perfect rectangle) without regard for any cutouts. Accordingly, the area of the actual room will typically smaller than the product obtained by multiplying the stated length by the stated width. All dimensions are approximate and may vary with actual construction and may change prior to completion. Any and all furnishings, finishes, or décor illustrated are not included with the purchase of the Unit. Consult the Prospectus for information regarding what is offered with the Unit and for the calculation of the Unit square footage and dimensions.

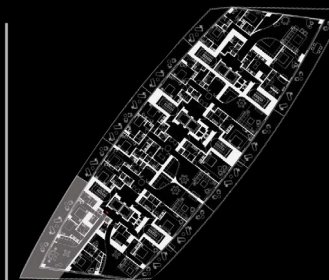








COLLINS AVENUE



OCEAN

Residence E

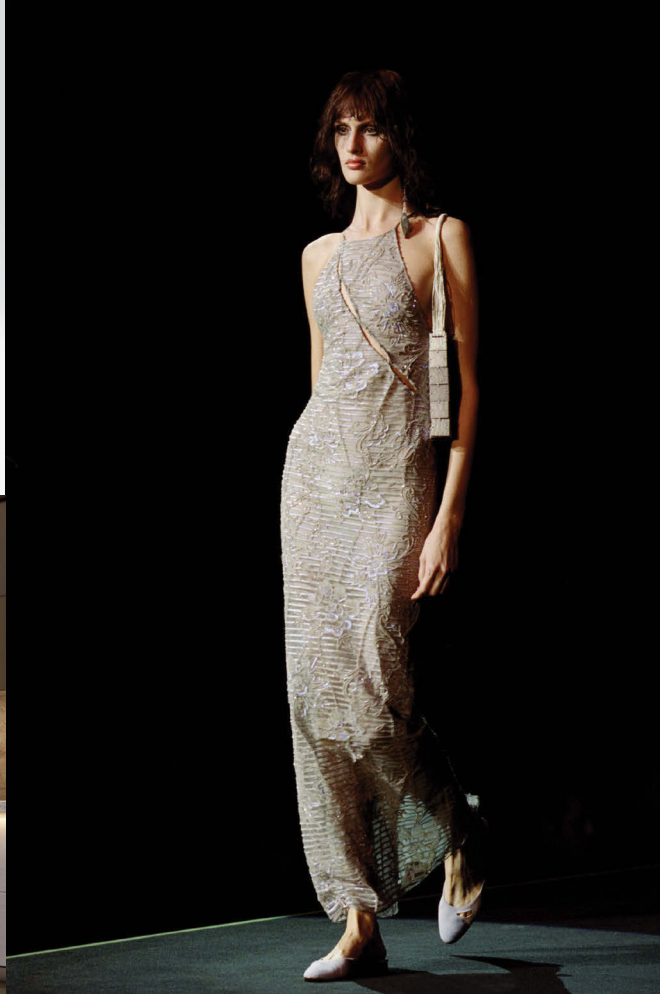
2 Bedrooms

2 Baths

- 1. Entrance
- 2. Living and dining room
- 3. Kitchen
- 4. Powder room
- 5. Master bedroom
- 6. Master bathroom
- 7. Bedroom 2 and bathroom
- 8. Terrace



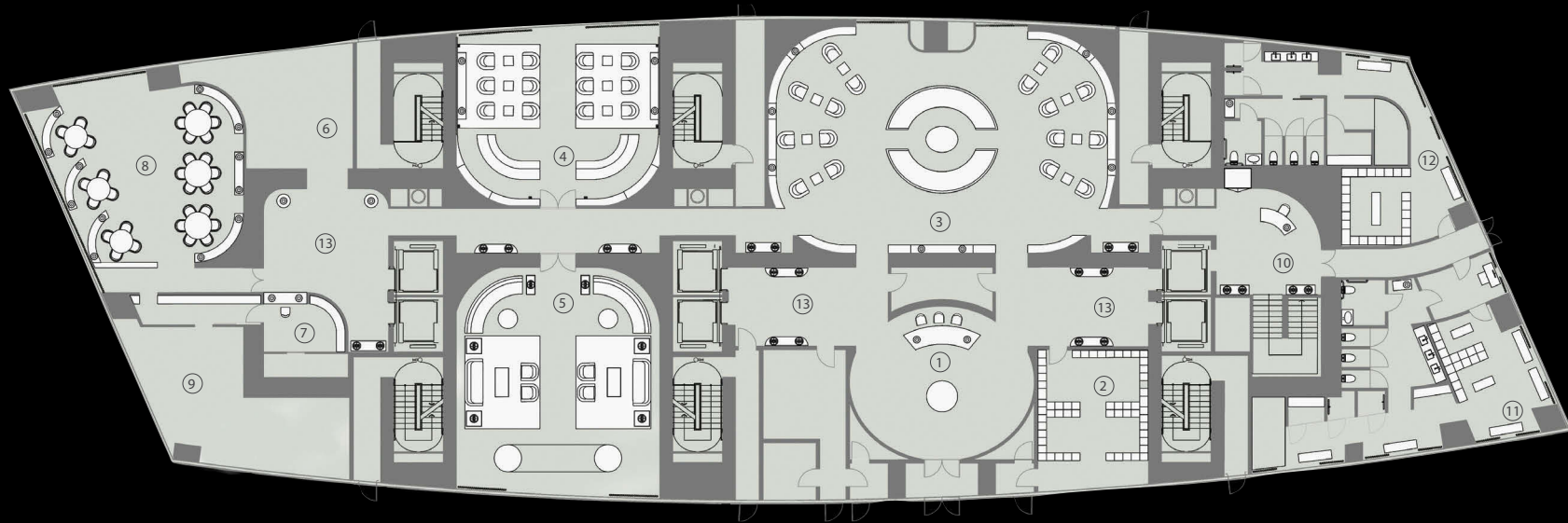
Depending on the method of calculation, the quoted square footage of any Unit may vary. The dimensions in the Unit shown in these floor plans have been calculated from the exterior boundaries of the exterior walls to the centerline of interior demising walls, including common elements such as structural walls and other interior structural components of the building and are greater than the dimensions that would be determined by using the description and definition of the "Unit" set forth in the Prospectus and the Declaration. The measurements of a room set forth on this floor plan are generally taken at the greatest points of each given room (as if the room were a perfect rectangle) without regard for any cutouts. Accordingly, the area of the actual room will typically smaller than the product obtained by multiplying the stated length by the stated width. All dimensions are approximate and may vary with actual construction and may change prior to completion. Any and all furnishings, finishes, or décor illustrated are not included with the purchase of the Unit. Consult the Prospectus for information regarding what is offered with the Unit and for the calculation of the Unit square footage and dimensions.







OUTDOOR GARDEN

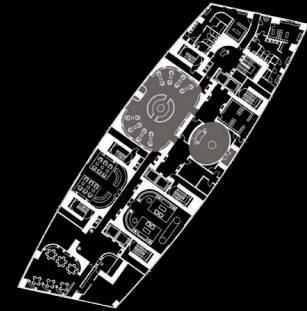
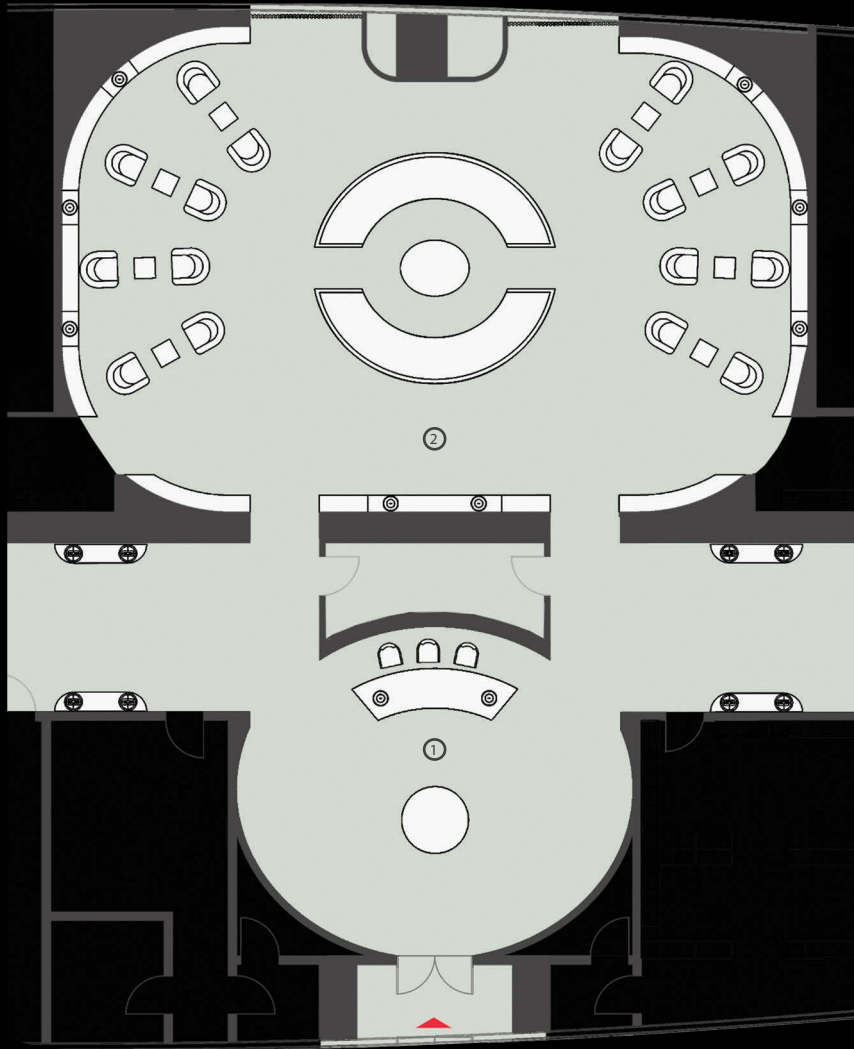


Ground Floor

1. Lobby
2. Mail room
3. Lobby Lounge
4. Bar
5. Privè
6. Bathrooms
7. Restaurant reception
8. Restaurant
9. Kitchen
10. Spa reception
11. Spa lockroom ladies
12. Spa lockroom gents
13. Lift lobby



Depending on the method of calculation, the quoted square footage of any Unit may vary. The dimensions in the Unit shown in these floor plans have been calculated from the exterior boundaries of the exterior walls to the centerline of interior demising walls, including common elements such as structural walls and other interior structural components of the building and are greater than the dimensions that would be determined by using the description and definition of the "Unit" set forth in the Prospectus and the Declaration. The measurements of a room set forth on this floor plan are generally taken at the greatest points of each given room (as if the room were a perfect rectangle) without regard for any cutouts. Accordingly, the area of the actual room will typically smaller than the product obtained by multiplying the stated length by the stated width. All dimensions are approximate and may vary with actual construction and may change prior to completion. Any and all furnishings, finishes, or décor illustrated are not included with the purchase of the Unit. Consult the Prospectus for information regarding what is offered with the Unit and for the calculation of the Unit square footage and dimensions.



COLLINS AVENUE

OCEAN

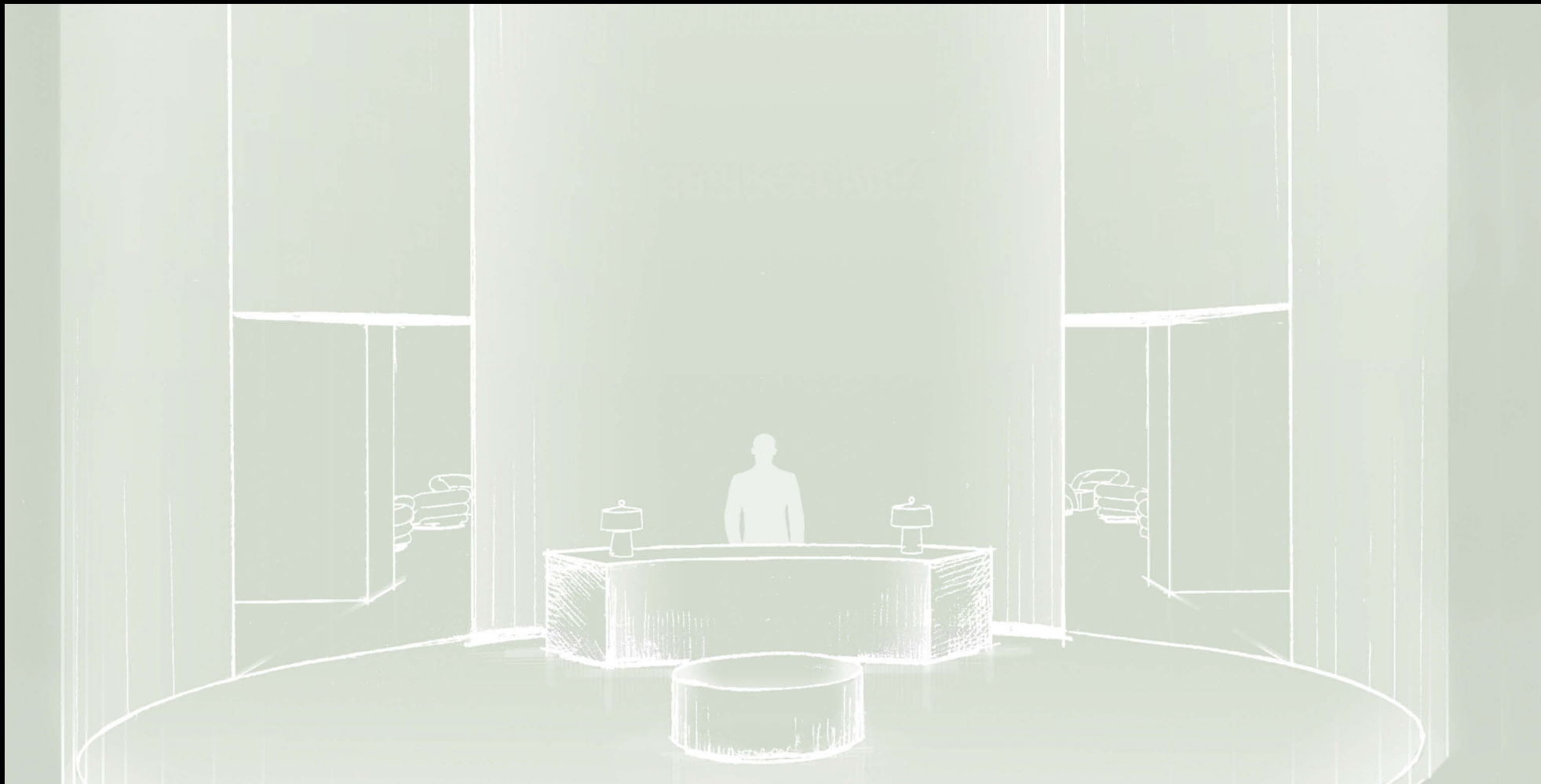
Ground floor
Lobby and lounge

- 1. Lobby
- 2. Lounge

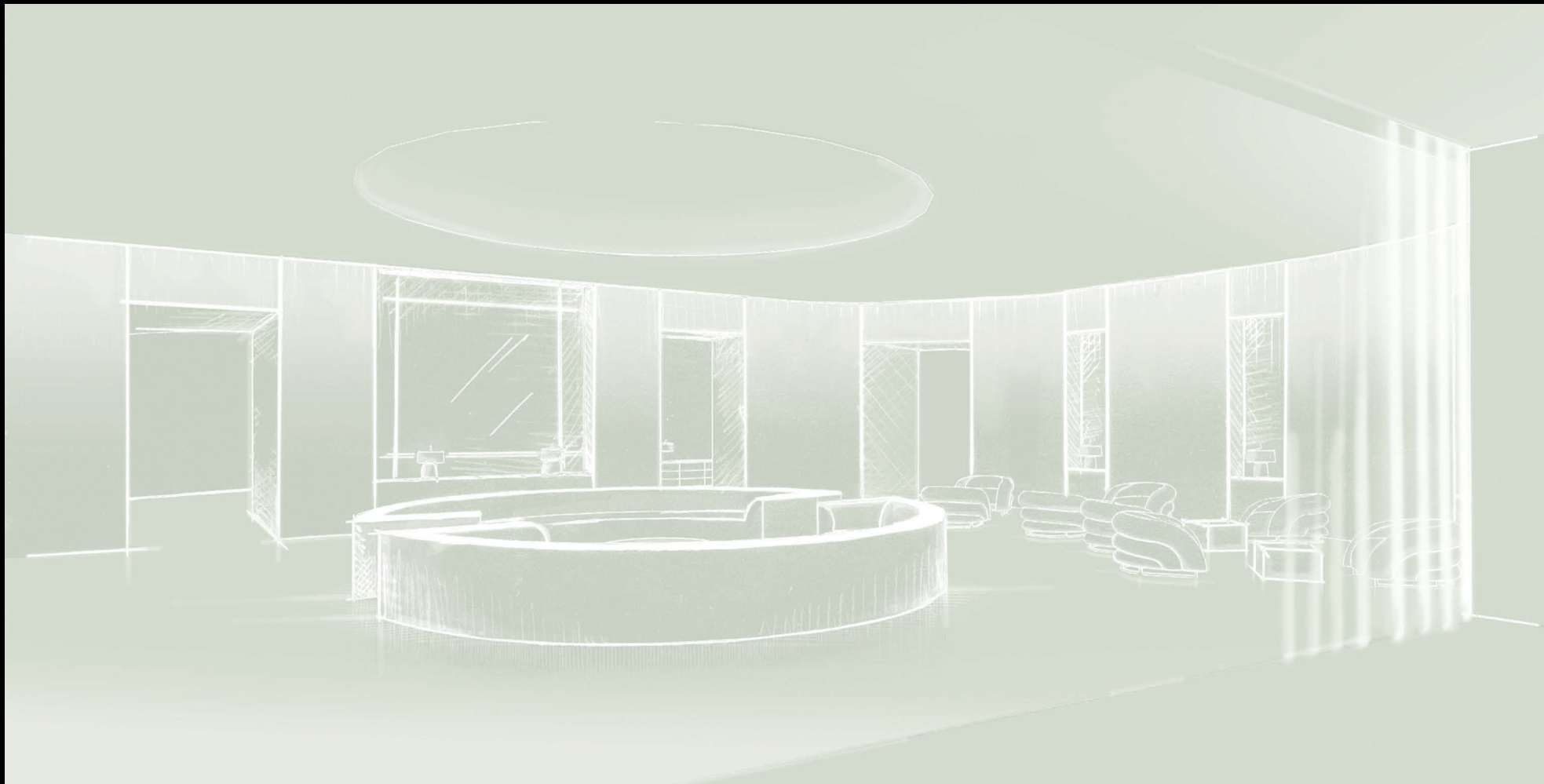


Depending on the method of calculation, the quoted square footage of any Unit may vary. The dimensions in the Unit shown in these floor plans have been calculated from the exterior boundaries of the exterior walls to the centerline of interior demising walls, including common elements such as structural walls and other interior structural components of the building and are greater than the dimensions that would be determined by using the description and definition of the "Unit" set forth in the Prospectus and the Declaration. The measurements of a room set forth on this floor plan are generally taken at the greatest points of each given room (as if the room were a perfect rectangle) without regard for any cutouts. Accordingly, the area of the actual room will typically smaller than the product obtained by multiplying the stated length by the stated width. All dimensions are approximate and may vary with actual construction and may change prior to completion. Any and all furnishings, finishes, or décor illustrated are not included with the purchase of the Unit. Consult the Prospectus for information regarding what is offered with the Unit and for the calculation of the Unit square footage and dimensions.



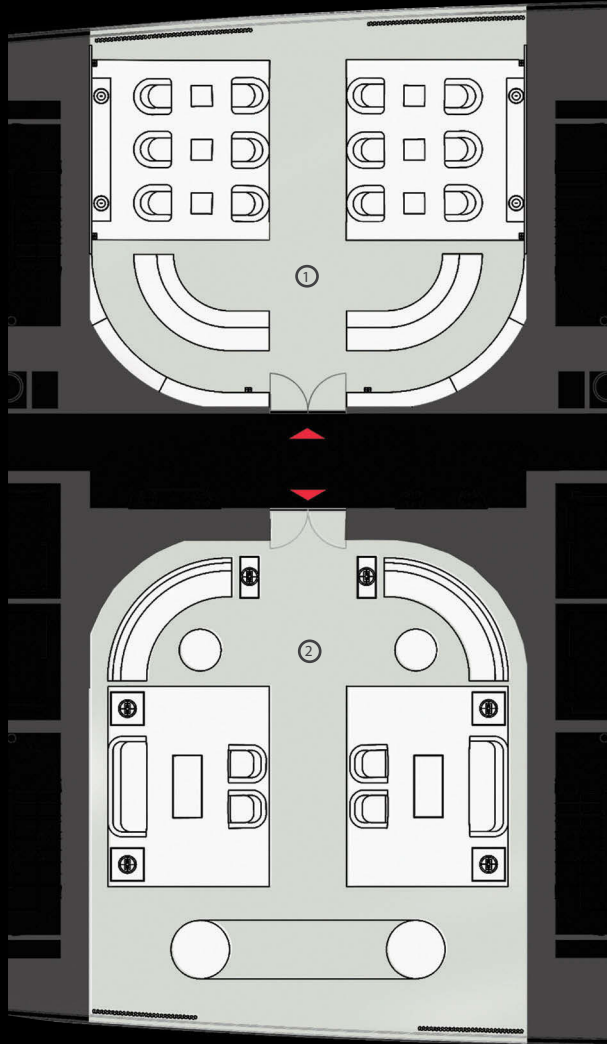




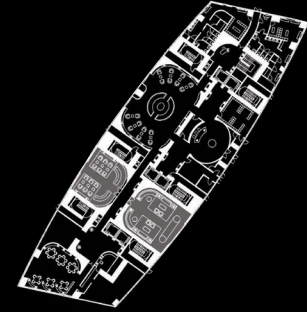








COLLINS AVENUE



OCEAN

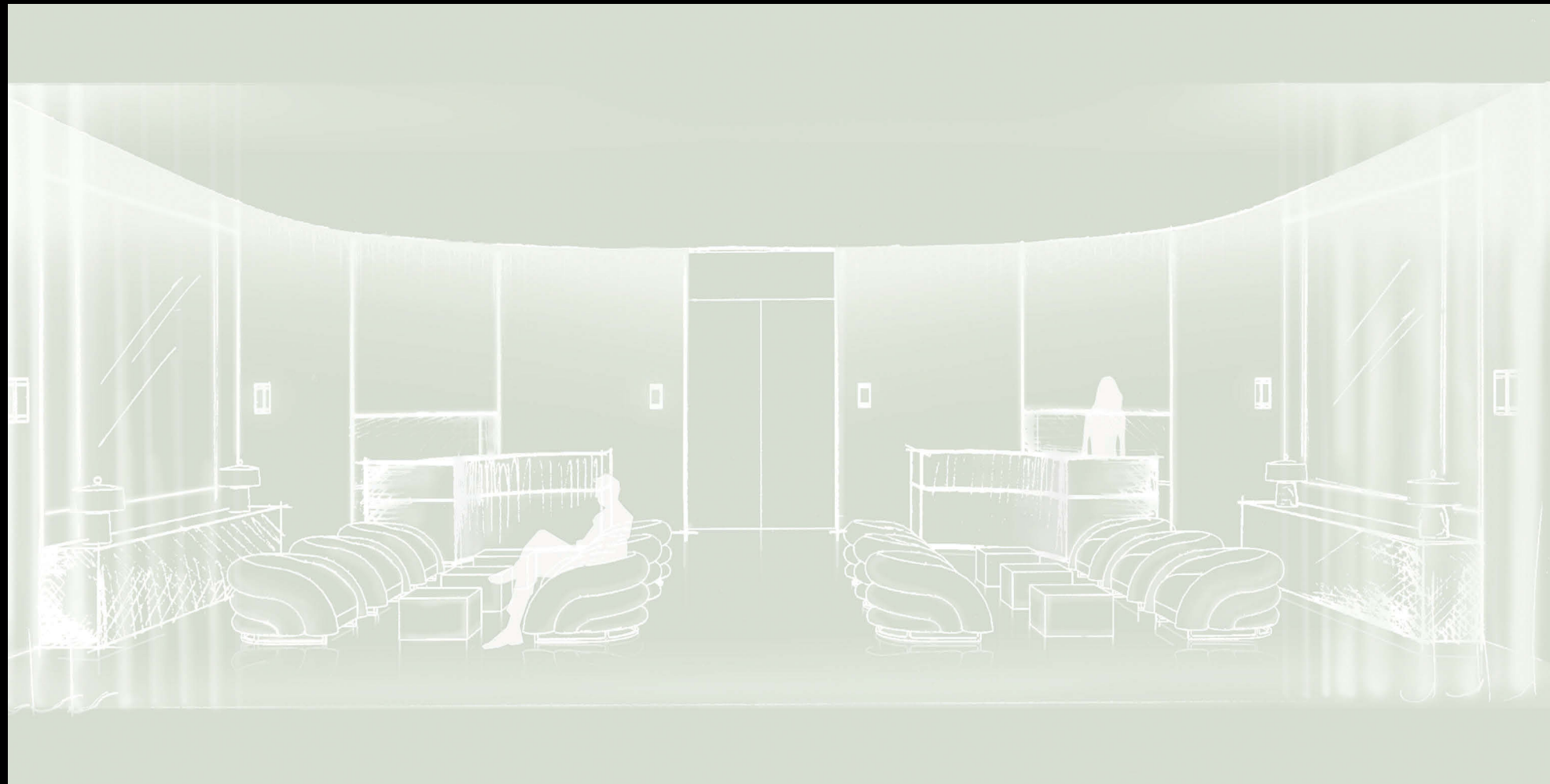
Ground floor
Bar and Privè

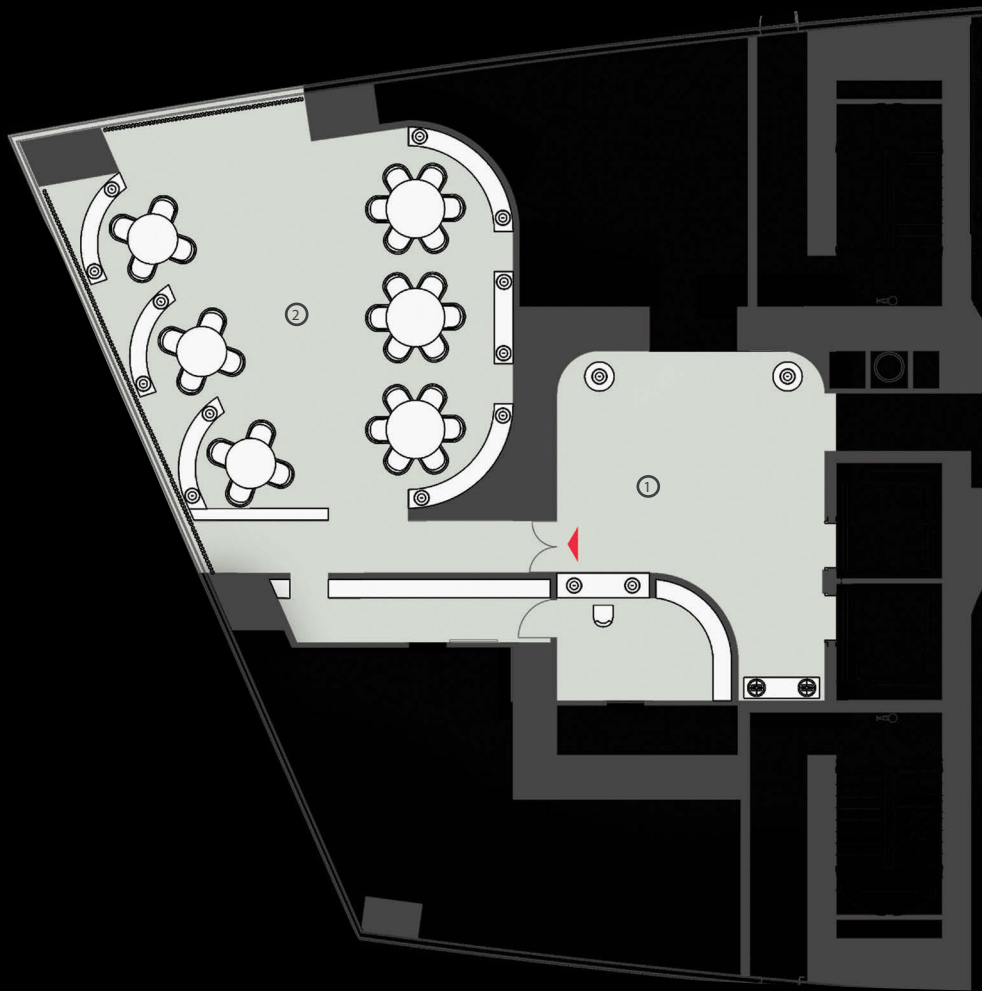
- 1. Bar
- 2. Privè



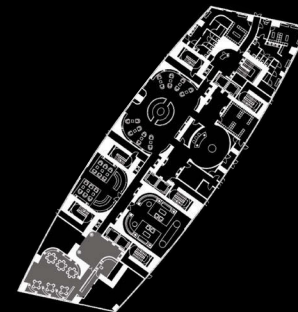
Depending on the method of calculation, the quoted square footage of any Unit may vary. The dimensions in the Unit shown in these floor plans have been calculated from the exterior boundaries of the exterior walls to the centerline of interior demising walls, including common elements such as structural walls and other interior structural components of the building and are greater than the dimensions that would be determined by using the description and definition of the "Unit" set forth in the Prospectus and the Declaration. The measurements of a room set forth on this floor plan are generally taken at the greatest points of each given room (as if the room were a perfect rectangle) without regard for any cutouts. Accordingly, the area of the actual room will typically smaller than the product obtained by multiplying the stated length by the stated width. All dimensions are approximate and may vary with actual construction and may change prior to completion. Any and all furnishings, finishes, or décor illustrated are not included with the purchase of the Unit. Consult the Prospectus for information regarding what is offered with the Unit and for the calculation of the Unit square footage and dimensions.







COLLINS AVENUE



OCEAN

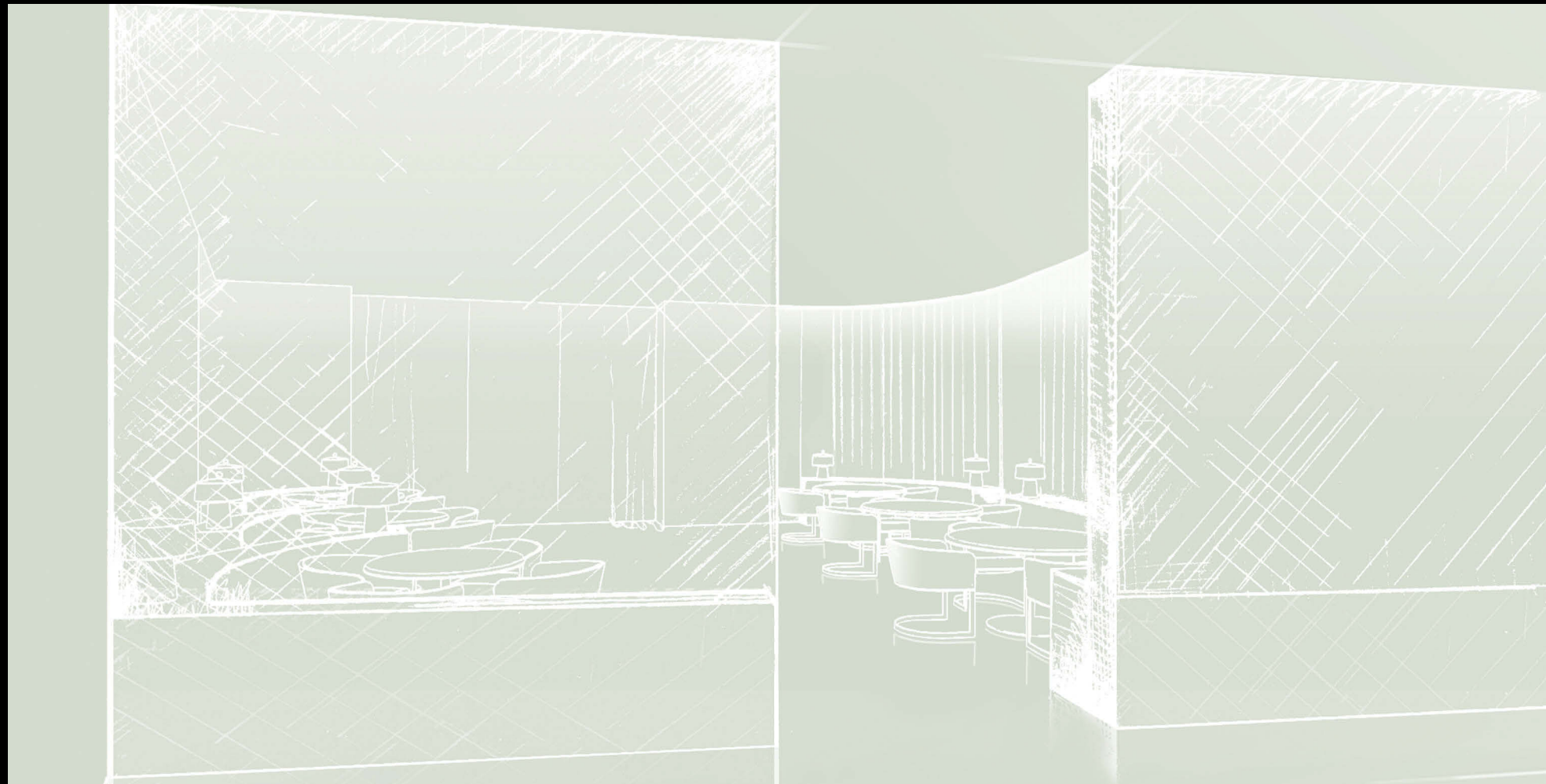
Ground floor
Restaurant

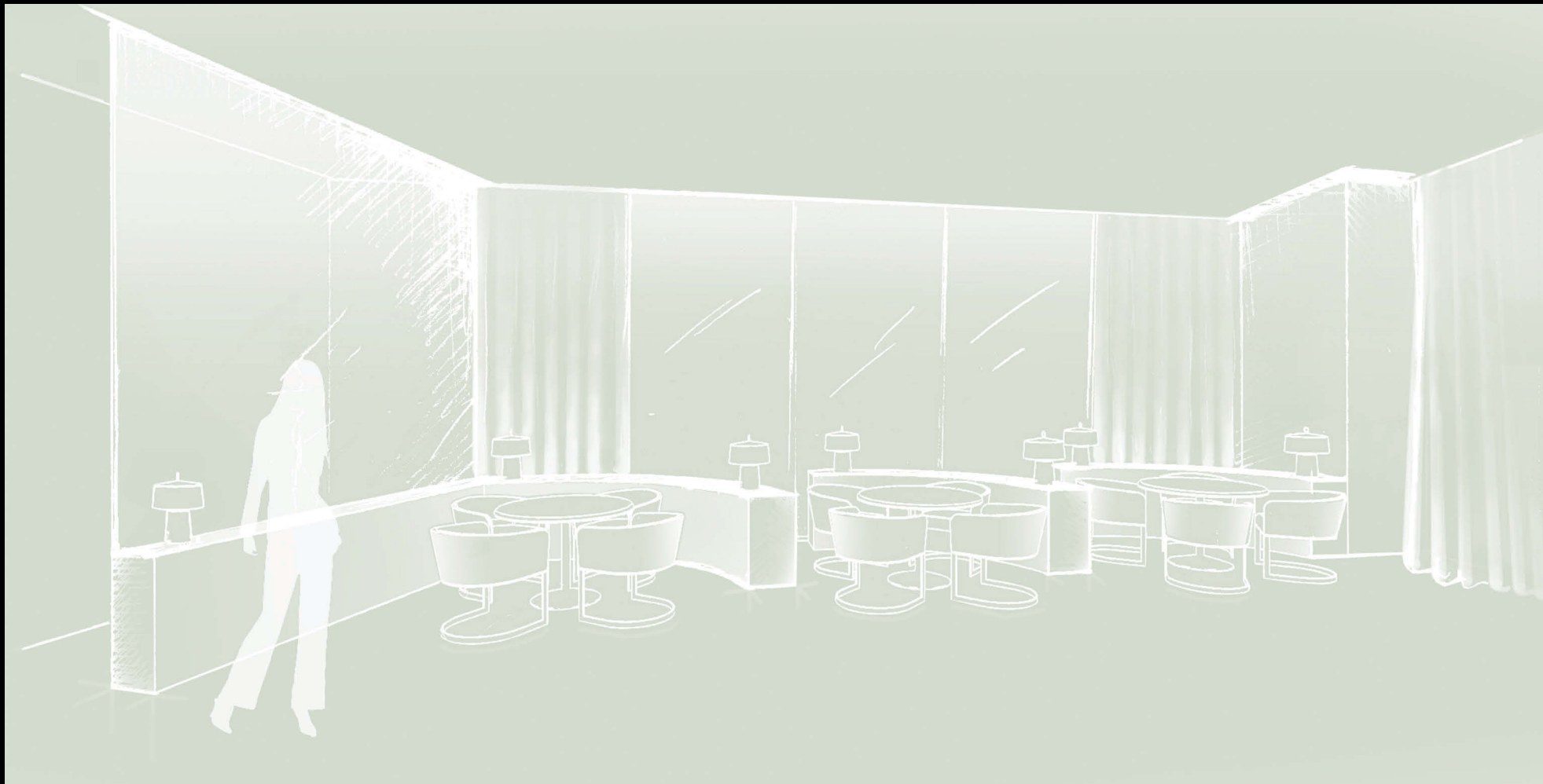
- 1. Restaurant reception
- 2. Restaurant

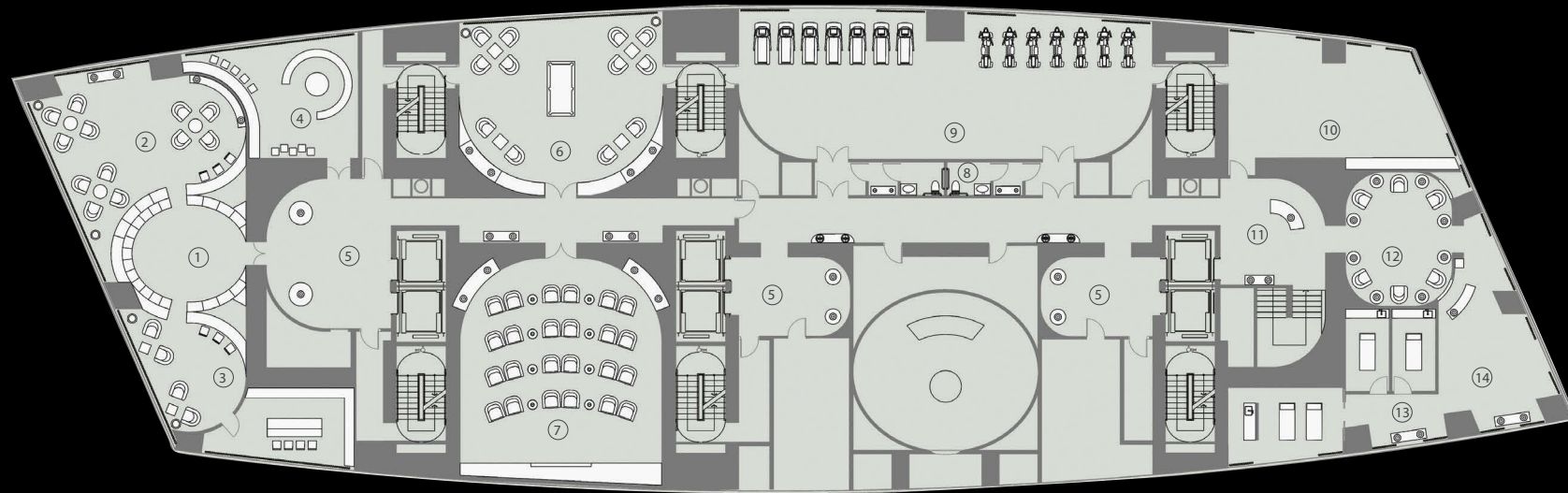


Depending on the method of calculation, the quoted square footage of any Unit may vary. The dimensions in the Unit shown in these floor plans have been calculated from the exterior boundaries of the exterior walls to the centerline of interior demising walls, including common elements such as structural walls and other interior structural components of the building and are greater than the dimensions that would be determined by using the description and definition of the "Unit" set forth in the Prospectus and the Declaration. The measurements of a room set forth on this floor plan are generally taken at the greatest points of each given room (as if the room were a perfect rectangle) without regard for any cutouts. Accordingly, the area of the actual room will typically smaller than the product obtained by multiplying the stated length by the stated width. All dimensions are approximate and may vary with actual construction and may change prior to completion. Any and all furnishings, finishes, or décor illustrated are not included with the purchase of the Unit. Consult the Prospectus for information regarding what is offered with the Unit and for the calculation of the Unit square footage and dimensions.







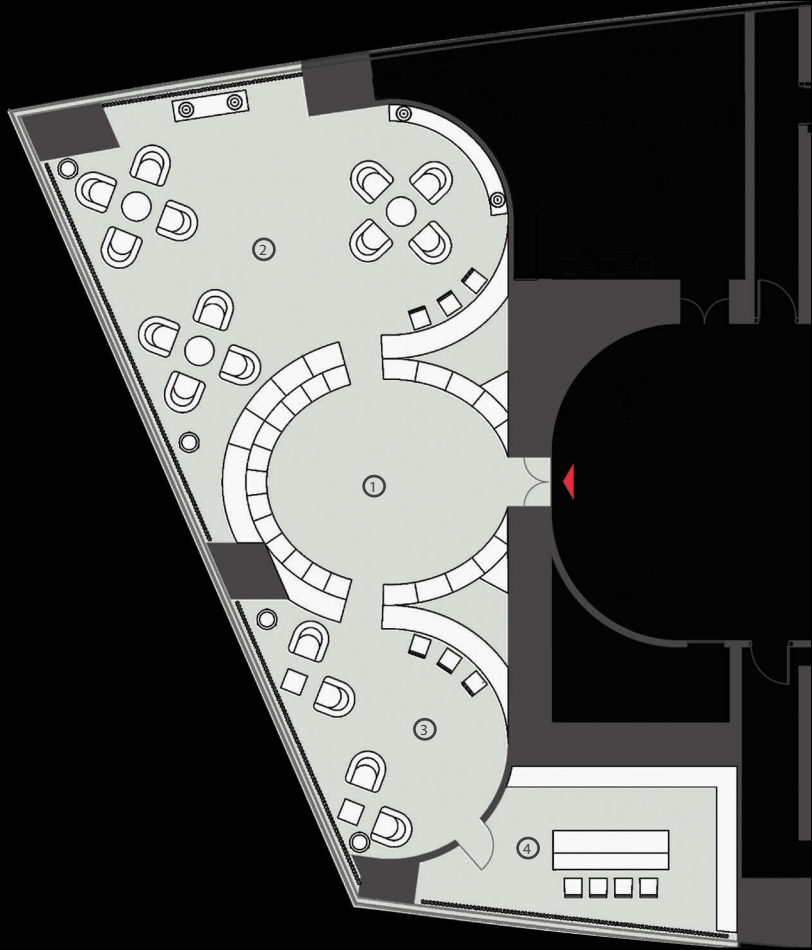


First Floor

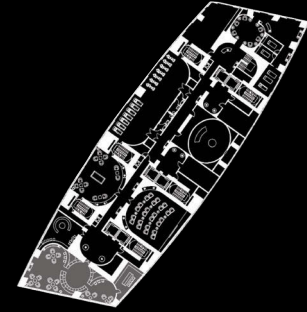
1. Entrance to cigar and wine room
2. Cigar room
3. Wine room and Cellar
4. Kids room
5. Lift lobby
6. Game room
7. Theatre
8. Bathrooms
9. Gym
10. Aerobics
11. Spa reception
12. Spa lounge
13. Treatment zone
14. Hair station



Depending on the method of calculation, the quoted square footage of any Unit may vary. The dimensions in the Unit shown in these floor plans have been calculated from the exterior boundaries of the exterior walls to the centerline of interior demising walls, including common elements such as structural walls and other interior structural components of the building and are greater than the dimensions that would be determined by using the description and definition of the "Unit" set forth in the Prospectus and the Declaration. The measurements of a room set forth on this floor plan are generally taken at the greatest points of each given room (as if the room were a perfect rectangle) without regard for any cutouts. Accordingly, the area of the actual room will typically smaller than the product obtained by multiplying the stated length by the stated width. All dimensions are approximate and may vary with actual construction and may change prior to completion. Any and all furnishings, finishes, or décor illustrated are not included with the purchase of the Unit. Consult the Prospectus for information regarding what is offered with the Unit and for the calculation of the Unit square footage and dimensions.



COLLINS AVENUE



OCEAN

First floor
Cigar and Wine room

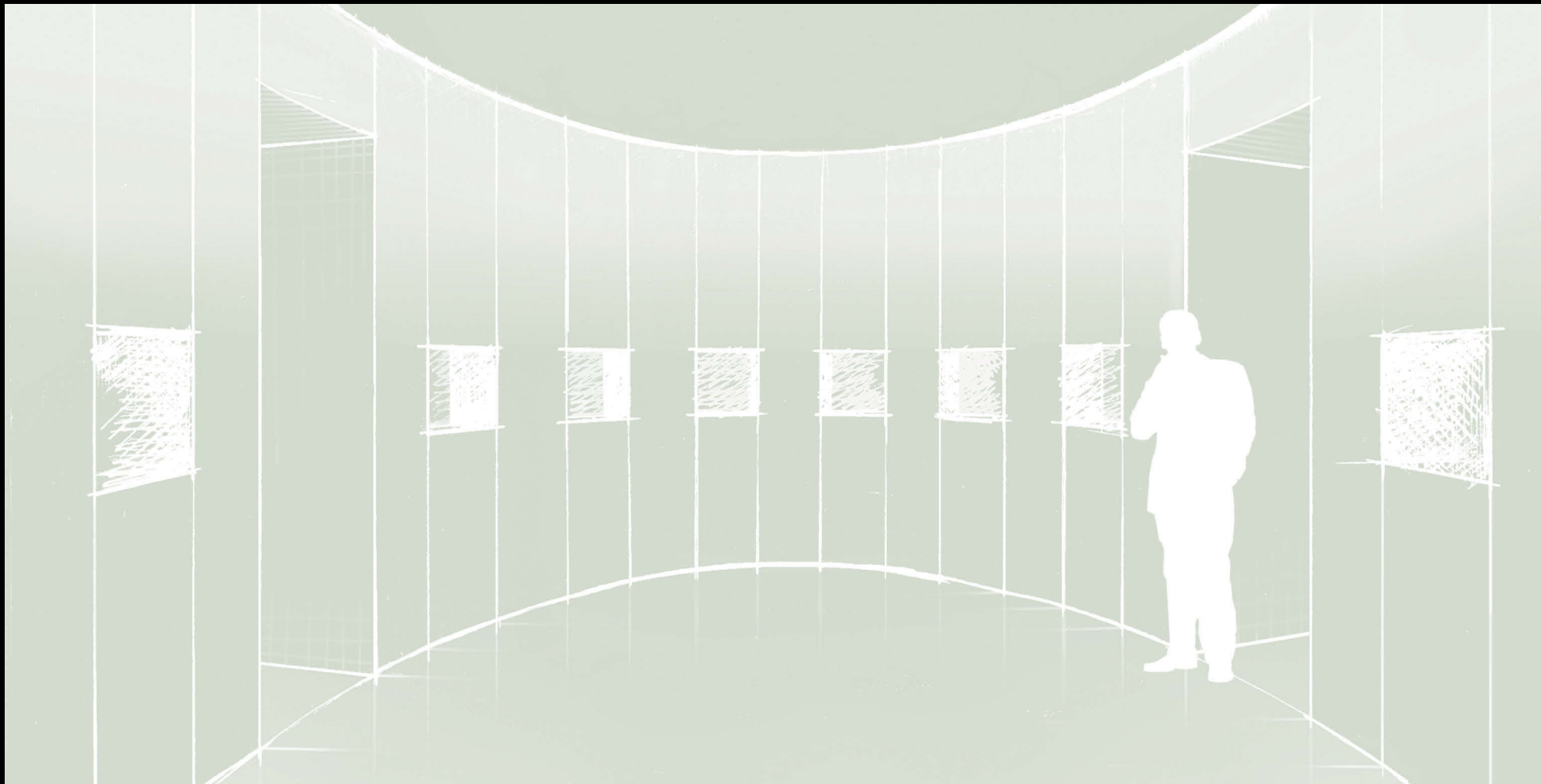
1. Entrance to cigar and wine room
2. Cigar room
3. Wine room
4. Wine Cellar



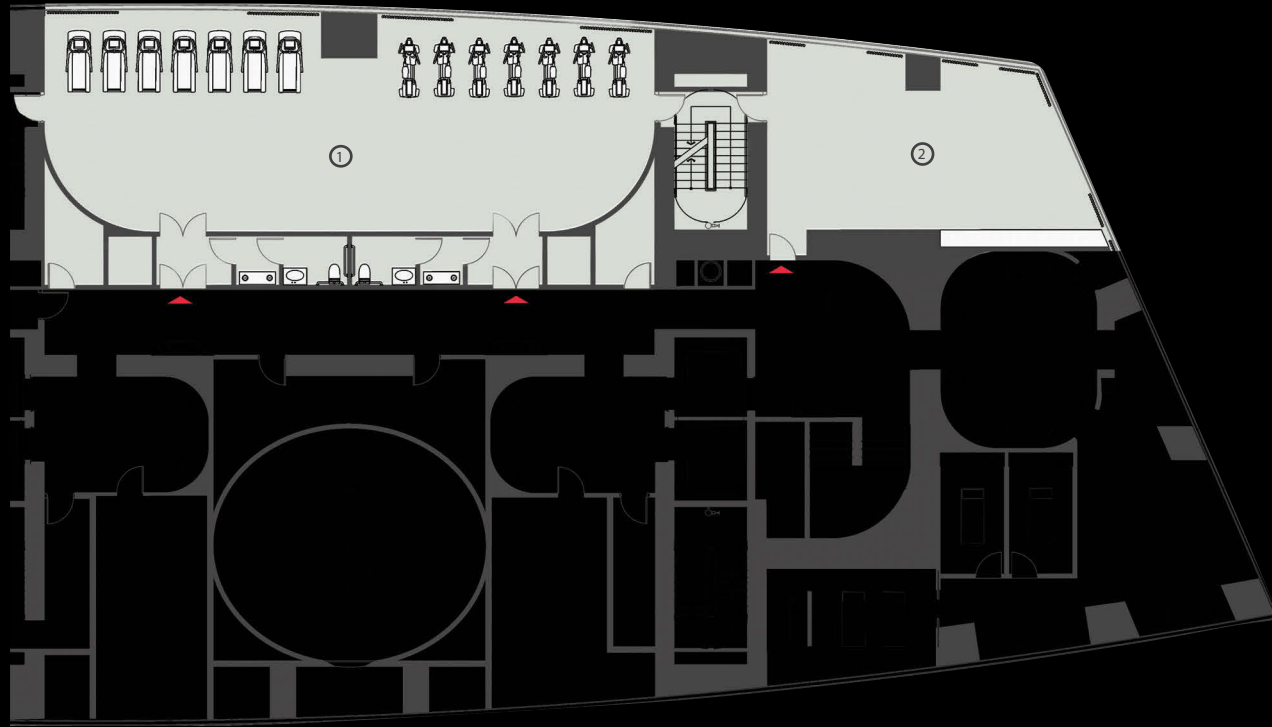
Depending on the method of calculation, the quoted square footage of any Unit may vary. The dimensions in the Unit shown in these floor plans have been calculated from the exterior boundaries of the exterior walls to the centerline of interior demising walls, including common elements such as structural walls and other interior structural components of the building and are greater than the dimensions that would be determined by using the description and definition of the "Unit" set forth in the Prospectus and the Declaration. The measurements of a room set forth on this floor plan are generally taken at the greatest points of each given room (as if the room were a perfect rectangle) without regard for any cutouts. Accordingly, the area of the actual room will typically smaller than the product obtained by multiplying the stated length by the stated width. All dimensions are approximate and may vary with actual construction and may change prior to completion. Any and all furnishings, finishes, or décor illustrated are not included with the purchase of the Unit. Consult the Prospectus for information regarding what is offered with the Unit and for the calculation of the Unit square footage and dimensions.



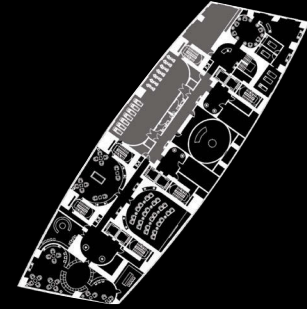








COLLINS AVENUE



OCEAN

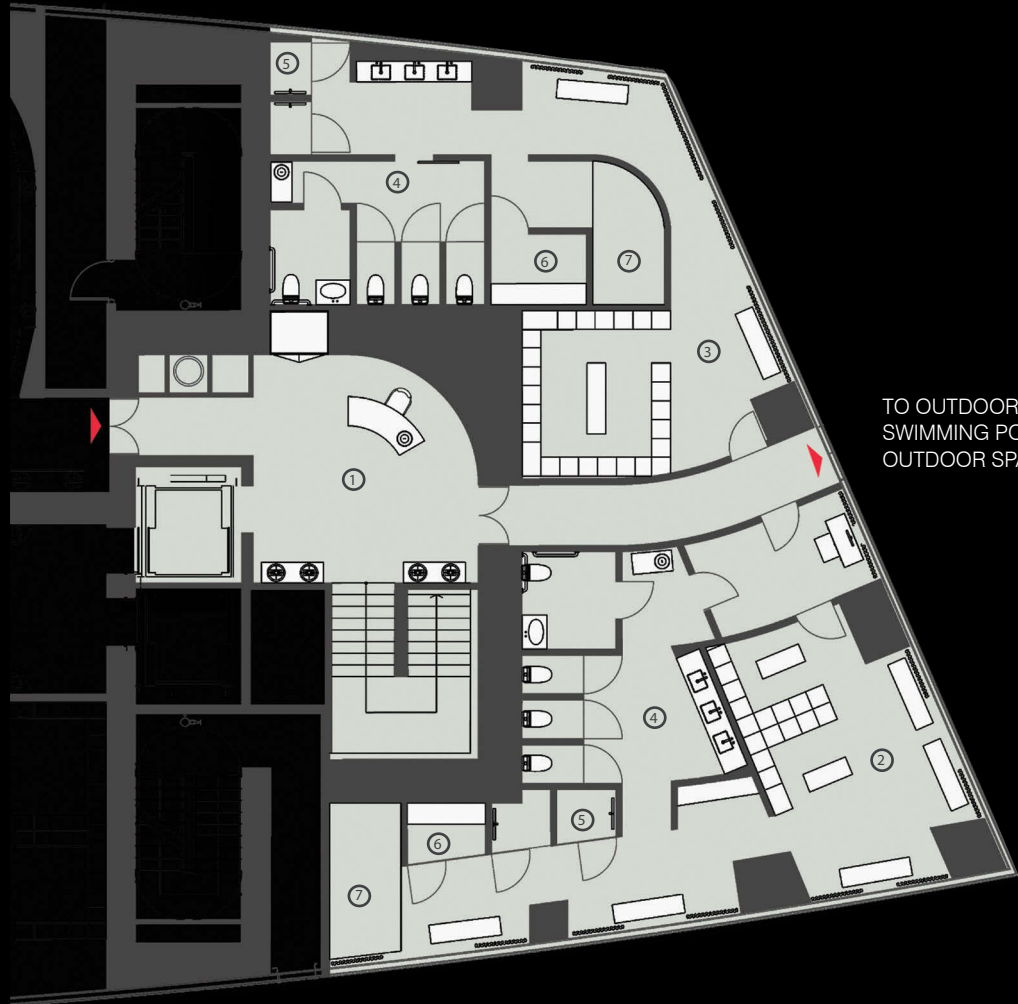
First floor
Gym

- 1. Gym
- 2. Aerobics



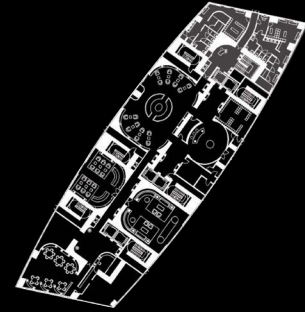
Depending on the method of calculation, the quoted square footage of any Unit may vary. The dimensions in the Unit shown in these floor plans have been calculated from the exterior boundaries of the exterior walls to the centerline of interior demising walls, including common elements such as structural walls and other interior structural components of the building and are greater than the dimensions that would be determined by using the description and definition of the "Unit" set forth in the Prospectus and the Declaration. The measurements of a room set forth on this floor plan are generally taken at the greatest points of each given room (as if the room were a perfect rectangle) without regard for any cutouts. Accordingly, the area of the actual room will typically smaller than the product obtained by multiplying the stated length by the stated width. All dimensions are approximate and may vary with actual construction and may change prior to completion. Any and all furnishings, finishes, or décor illustrated are not included with the purchase of the Unit. Consult the Prospectus for information regarding what is offered with the Unit and for the calculation of the Unit square footage and dimensions.





TO OUTDOOR GARDEN,
SWIMMING POOL AND
OUTDOOR SPA AREA

COLLINS AVENUE



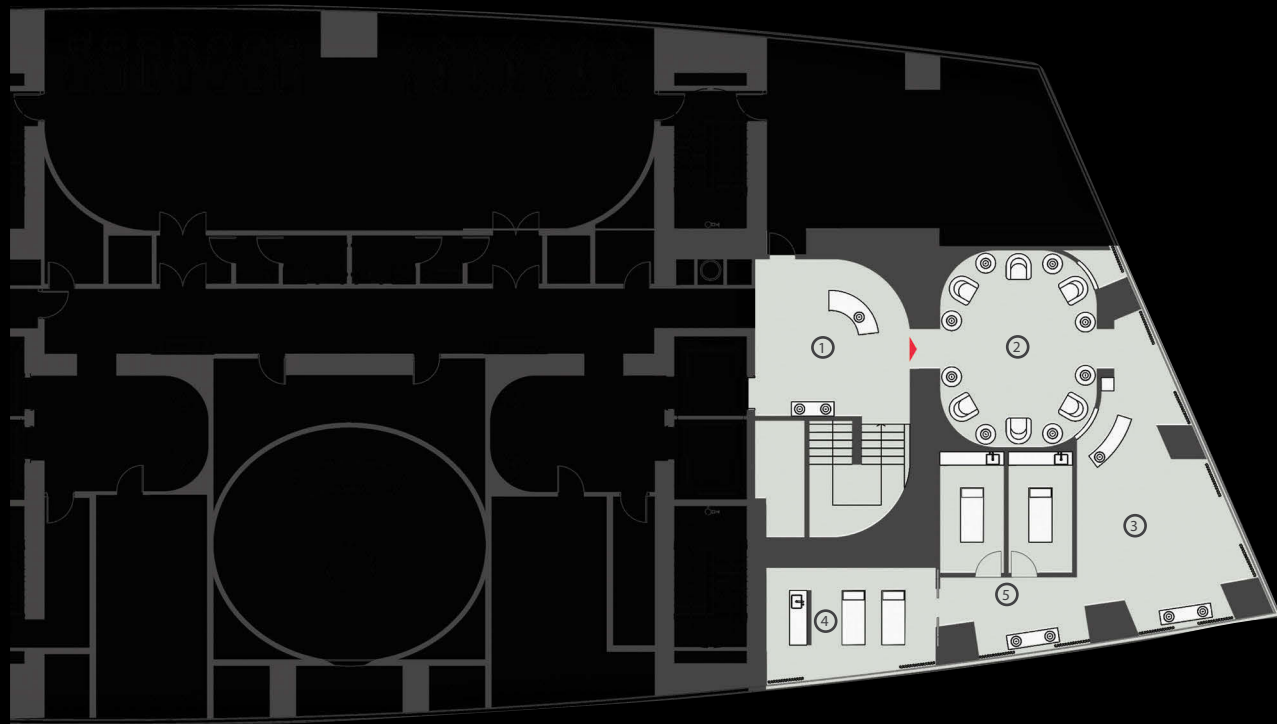
OCEAN

Ground floor
Spa

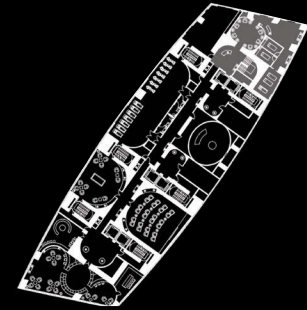
1. Spa reception
2. Spa lockroom ladies
3. Spa lockroom gents
4. Bathrooms
5. Showers
6. Steam rooms
7. Punch pools



Depending on the method of calculation, the quoted square footage of any Unit may vary. The dimensions in the Unit shown in these floor plans have been calculated from the exterior boundaries of the exterior walls to the centerline of interior demising walls, including common elements such as structural walls and other interior structural components of the building and are greater than the dimensions that would be determined by using the description and definition of the "Unit" set forth in the Prospectus and the Declaration. The measurements of a room set forth on this floor plan are generally taken at the greatest points of each given room (as if the room were a perfect rectangle) without regard for any cutouts. Accordingly, the area of the actual room will typically smaller than the product obtained by multiplying the stated length by the stated width. All dimensions are approximate and may vary with actual construction and may change prior to completion. Any and all furnishings, finishes, or décor illustrated are not included with the purchase of the Unit. Consult the Prospectus for information regarding what is offered with the Unit and for the calculation of the Unit square footage and dimensions.



COLLINS AVENUE



OCEAN

First floor
Spa Treatment

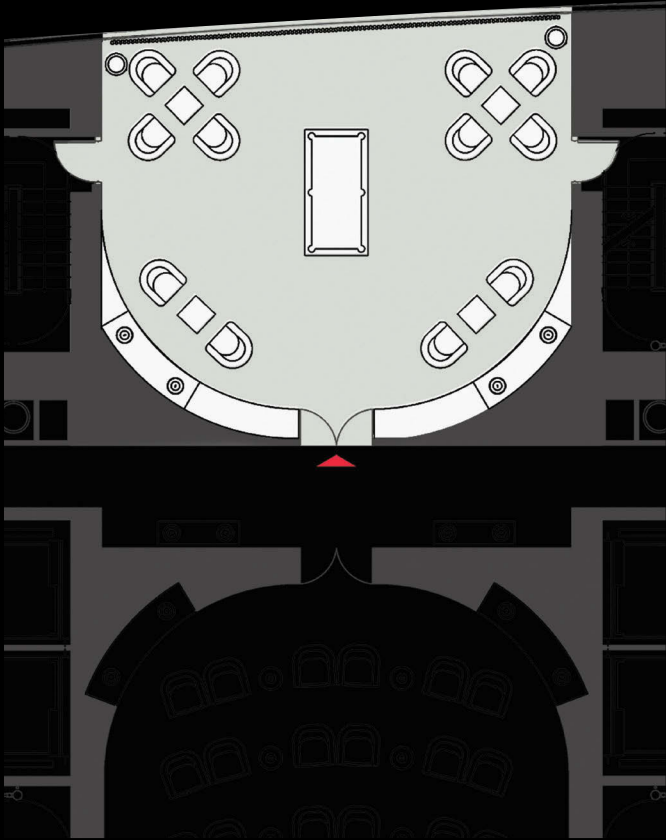
1. Spa reception
2. Spa lounge
3. Hair station
4. Treatment couple room
5. Treatment single rooms



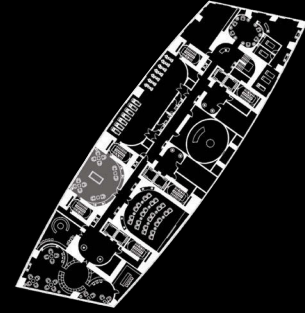
Depending on the method of calculation, the quoted square footage of any Unit may vary. The dimensions in the Unit shown in these floor plans have been calculated from the exterior boundaries of the exterior walls to the centerline of interior demising walls, including common elements such as structural walls and other interior structural components of the building and are greater than the dimensions that would be determined by using the description and definition of the "Unit" set forth in the Prospectus and the Declaration. The measurements of a room set forth on this floor plan are generally taken at the greatest points of each given room (as if the room were a perfect rectangle) without regard for any cutouts. Accordingly, the area of the actual room will typically smaller than the product obtained by multiplying the stated length by the stated width. All dimensions are approximate and may vary with actual construction and may change prior to completion. Any and all furnishings, finishes, or décor illustrated are not included with the purchase of the Unit. Consult the Prospectus for information regarding what is offered with the Unit and for the calculation of the Unit square footage and dimensions.







COLLINS AVENUE



OCEAN

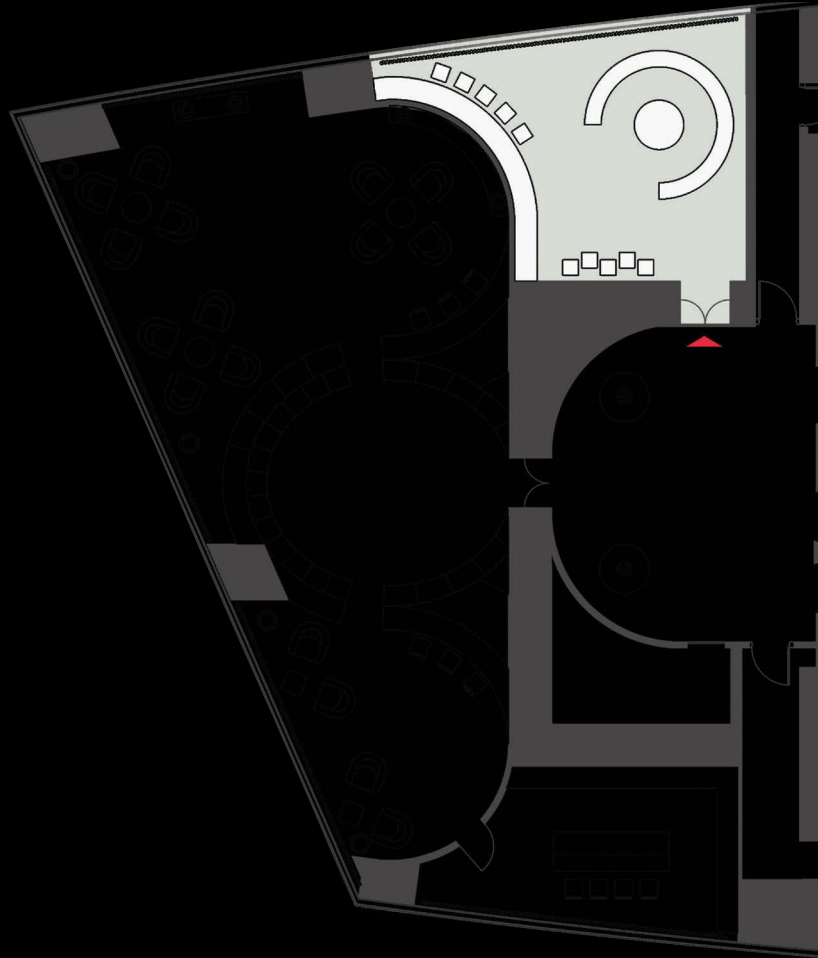
First floor
Game room



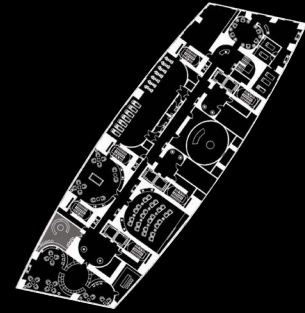
Depending on the method of calculation, the quoted square footage of any Unit may vary. The dimensions in the Unit shown in these floor plans have been calculated from the exterior boundaries of the exterior walls to the centerline of interior demising walls, including common elements such as structural walls and other interior structural components of the building and are greater than the dimensions that would be determined by using the description and definition of the "Unit" set forth in the Prospectus and the Declaration. The measurements of a room set forth on this floor plan are generally taken at the greatest points of each given room (as if the room were a perfect rectangle) without regard for any cutouts. Accordingly, the area of the actual room will typically smaller than the product obtained by multiplying the stated length by the stated width. All dimensions are approximate and may vary with actual construction and may change prior to completion. Any and all furnishings, finishes, or décor illustrated are not included with the purchase of the Unit. Consult the Prospectus for information regarding what is offered with the Unit and for the calculation of the Unit square footage and dimensions.







COLLINS AVENUE

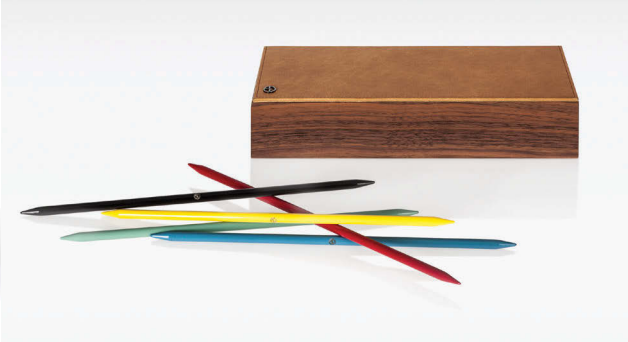


OCEAN

First floor
Kids room



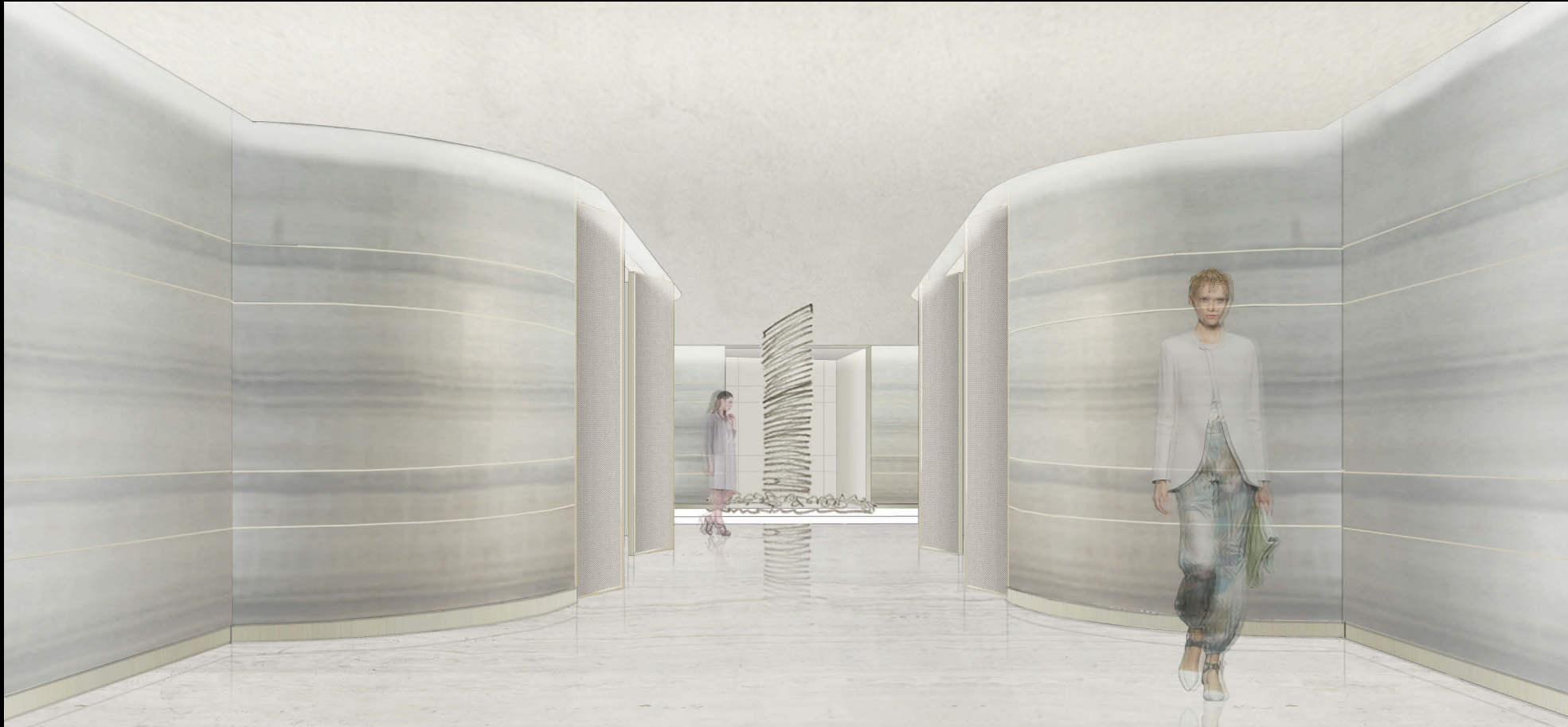
Depending on the method of calculation, the quoted square footage of any Unit may vary. The dimensions in the Unit shown in these floor plans have been calculated from the exterior boundaries of the exterior walls to the centerline of interior demising walls, including common elements such as structural walls and other interior structural components of the building and are greater than the dimensions that would be determined by using the description and definition of the "Unit" set forth in the Prospectus and the Declaration. The measurements of a room set forth on this floor plan are generally taken at the greatest points of each given room (as if the room were a perfect rectangle) without regard for any cutouts. Accordingly, the area of the actual room will typically smaller than the product obtained by multiplying the stated length by the stated width. All dimensions are approximate and may vary with actual construction and may change prior to completion. Any and all furnishings, finishes, or décor illustrated are not included with the purchase of the Unit. Consult the Prospectus for information regarding what is offered with the Unit and for the calculation of the Unit square footage and dimensions.

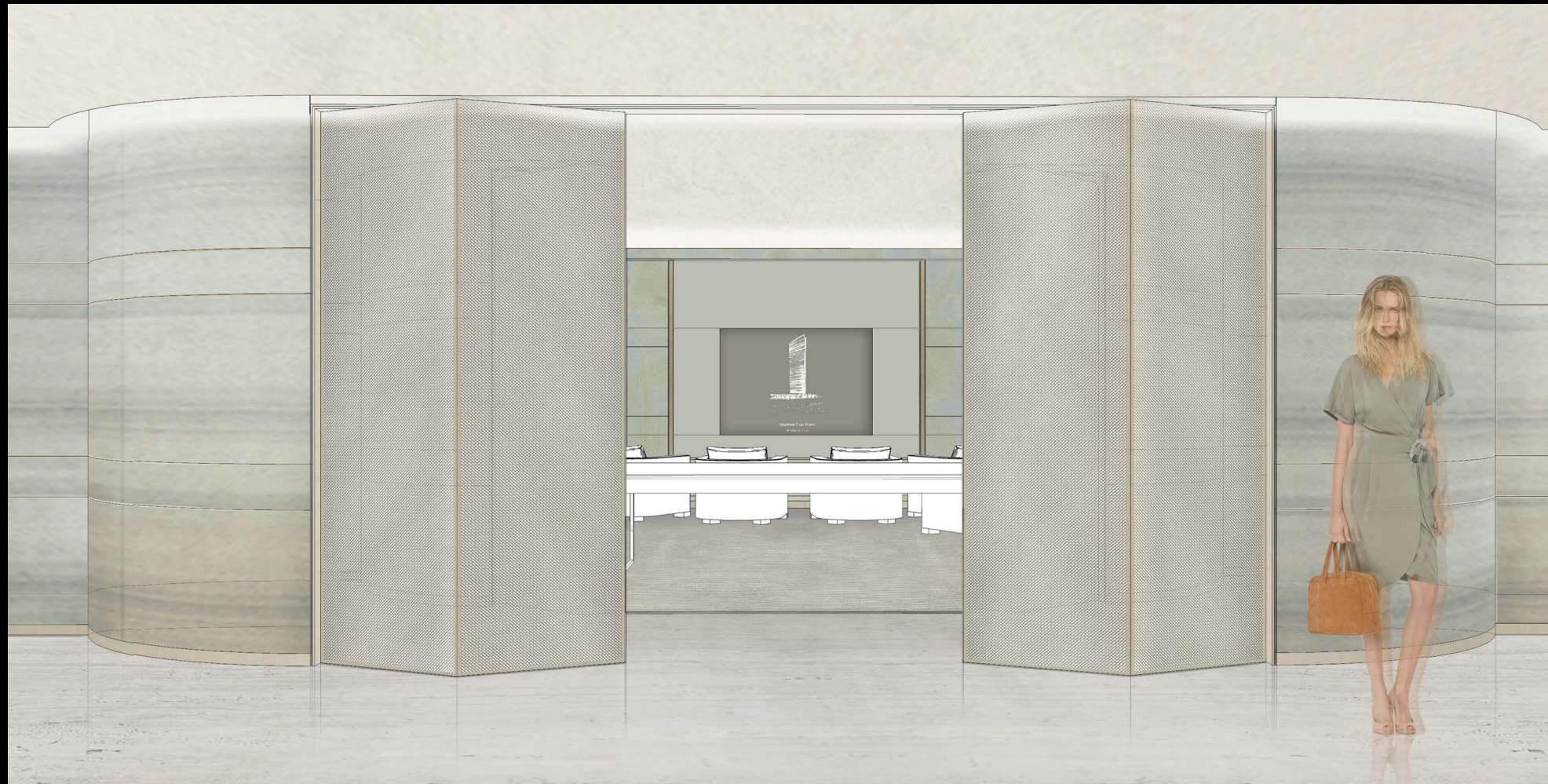




FUTURE RESIDENCES BY ARMANI CASA SALES GALLERY SKETCHES















ORAL REPRESENTATIONS CANNOT BE RELIED UPON AS CORRECTLY STATING REPRESENTATIONS OF THE DEVELOPER. FOR CORRECT REPRESENTATIONS, MAKE REFERENCE TO THIS BROCHURE AND TO THE DOCUMENTS REQUIRED BY SECTION 718.503, FLORIDA STATUTES, TO BE FURNISHED BY A DEVELOPER TO A BUYER OR LESSEE.

Oral representations cannot be relied upon as correctly stating representations of the developer. For correct representations, make reference to this brochure and the documents required by Section 718.503, Florida Statutes, to be furnished by a developer to a buyer or lessee. This is not intended to be an offer to sell, or solicitation of an offer to buy, condominium units to residents of CT, ID, NY, NJ and OR, unless registered or exemptions are available, or in any other jurisdiction where prohibited by law, and your eligibility for purchase will depend upon your state of residency. This offering is made only by the Prospectus for the condominium development project (hereinafter the "Condominium") and no statement should be relied upon if not made in the Prospectus provided to you by the Developer (as "Developer" is defined herein below).

Any sketches, renderings, or photographs depicting lifestyle, amenities, food services, resort services, unit finishes, designs, materials, furnishings, plans, specifications, or art contained in this brochure are proposed only, and the Developer reserves the right to modify, revise, or withdraw any or all of the same in its sole discretion and without prior notice. Dimensions and square footage are approximate and may vary depending on how measured and based upon actual construction. Also, locations and layouts of windows, doors, closets, plumbing fixtures, and structural and architectural design elements may vary from concept to actual construction. All depictions of appliances, plumbing fixtures, counters, countertops, cabinets, soffits, floor coverings and other matters of design and décor detail are conceptual and are not necessarily included in each Unit. These drawings, images, and depictions shown are conceptual only and should not be relied upon as representations, express or implied, of the final detail of the Condominium exterior or interior of the residences. All improvements, designs and construction are subject to first obtaining the appropriate federal, state and local permits and approvals for same which may require the Developer to alter any design, floor plan, or layout depicted. Accordingly, the Developer expressly reserves the right to make modifications, revisions, and changes it deems desirable or necessary in its sole and absolute discretion. Consult your Purchase Agreement and the Prospectus for the items included with the Unit. The photographs contained in this brochure may be stock photography or may have been taken off-site and are used to depict the spirit of the lifestyle and ambiance to be achieved rather than any lifestyle that may exist or that may be proposed. Models do not reflect racial or gender preferences. The views depicted are intended to evoke the feeling of beach side luxury lifestyles and are not intended to depict the actual views from any Unit. All photographs are merely intended as illustrations of the activities and concepts proposed and not depictions of the actual Condominium, nor actual views, nor actual Unit owners or guests. The Prospectus is not a securities offering. No statements or representations have been made by Developer, or any of its agents, employees or representatives with respect to any potential for future profit, future appreciation in value, investment opportunity potential, rental income potential, the ability or willingness of Developer or its affiliates to assist Buyer in financing, renting (other than the existence of a voluntary rental program) or selling the Unit, the economic or tax benefits to be derived from the managerial efforts of you as the owner or of any third party as a result of renting the Unit or other units, or the economic or tax benefits to be derived from ownership of the Unit. The Developer, its agents, employees, and representatives are neither investment advisors nor tax advisors and any statement(s) that may have been made with respect to the investment opportunity potential, or tax benefits of ownership, should not be relied upon in your decision to purchase a Unit. Certain nearby attractions, shopping venues, restaurants, and activities referenced or identified in this publication are off-site and may not be controlled by the Developer. Information provided herein regarding these off-site attractions, developments, and venues, whether existing at the time of this publication or proposed, have been obtained from public records and other sources of public information and is accurate, based upon those public sources, as of the date of this publication. However, there is no guarantee that any, or all such off-site attractions, shopping venues, restaurants, and activities will exist or be fully developed, as depicted, or that there would not be changes or substitutions of the attractions and venues nearby.

This Condominium is being developed by RDR Seashore, LLC ("Developer" as this defined term is used above and hereinafter) which has a limited right to use the trade names, logos, images, and trademarks depicted pursuant to license agreements. Although the registered trade names and marks of each are used by Developer pursuant to license agreements, The Related Group, Dezer Development, and Giorgio Armani are not the Developer. The Condominium and the association of owners will only be permitted to use the name of Giorgio Armani, or his brand Casa Armani, pursuant to a license agreement between the association and Giorgio Armani. With respect to any and all matters relating to the sales and/or marketing and/or development of the Condominium and/or your purchase of any Unit in the Condominium, any and all statements, disclosures and/or representations shall be deemed made by Developer and not by the Related Group, nor by Dezer Development, nor by Giorgio Armani, or any of their respective affiliates. The managing entities, hotels (if any), artwork, designers, contributing artists, interior designers, fitness facilities, amenities, and restaurants proposed within the Condominium and referred to herein are accurate as of the date of this publication; however, there is no guarantee that the any proposed managing entities, hotels (if any), artwork, designers, contributing artists, interior designers, fitness facilities, amenities, and restaurants will be involved as depicted or at all upon, or following the completion of the Condominium. In the event Giorgio Armani terminates any license agreement benefitting this Condominium project before, during, or following development, the use of the name Armani and/or Casa Armani would terminate. The art depicted or described may be exchanged for comparable art. Art may be loaned to, rather than owned by the Association. The Developer reserves the right, in the Developer's sole and absolute discretion, to change managing entities, hotels, artwork, contributing artists, names, brands, interior designers, fitness facilities, amenities, or restaurants with any such designers, artists, features, services, brands, amenities, and facilities of comparable quality as the Developer deems necessary or to be in the best interest of the Condominium. Certain amenities may not be included in Common Expenses and may only be available upon payment of a fee by the Unit owner. Certain amenities may be available for so long as the Condominium Association's contractual arrangement for such privileges continue at the Association's discretion. Consult the Prospectus.

No real estate broker or sales agent (whether engaged by Developer or not) is authorized to make any representations or other statements (verbal or written) regarding the Condominium, and no agreements with, deposits paid to, or other arrangements made with, any real estate broker or agents are binding on the Developer. All prices are subject to change at any time and without notice, and do not include optional features, design packages, furniture packages, or premiums for upgraded Units. Please check with the sales center for the most current pricing.

The project graphics, renderings, photographs, and text provided herein are copyrighted works owned by the Developer unless otherwise credited. Reproduction of any brochure content for private or commercial use is not authorized. 2015 © RDR Seashore, LLC with all rights reserved.