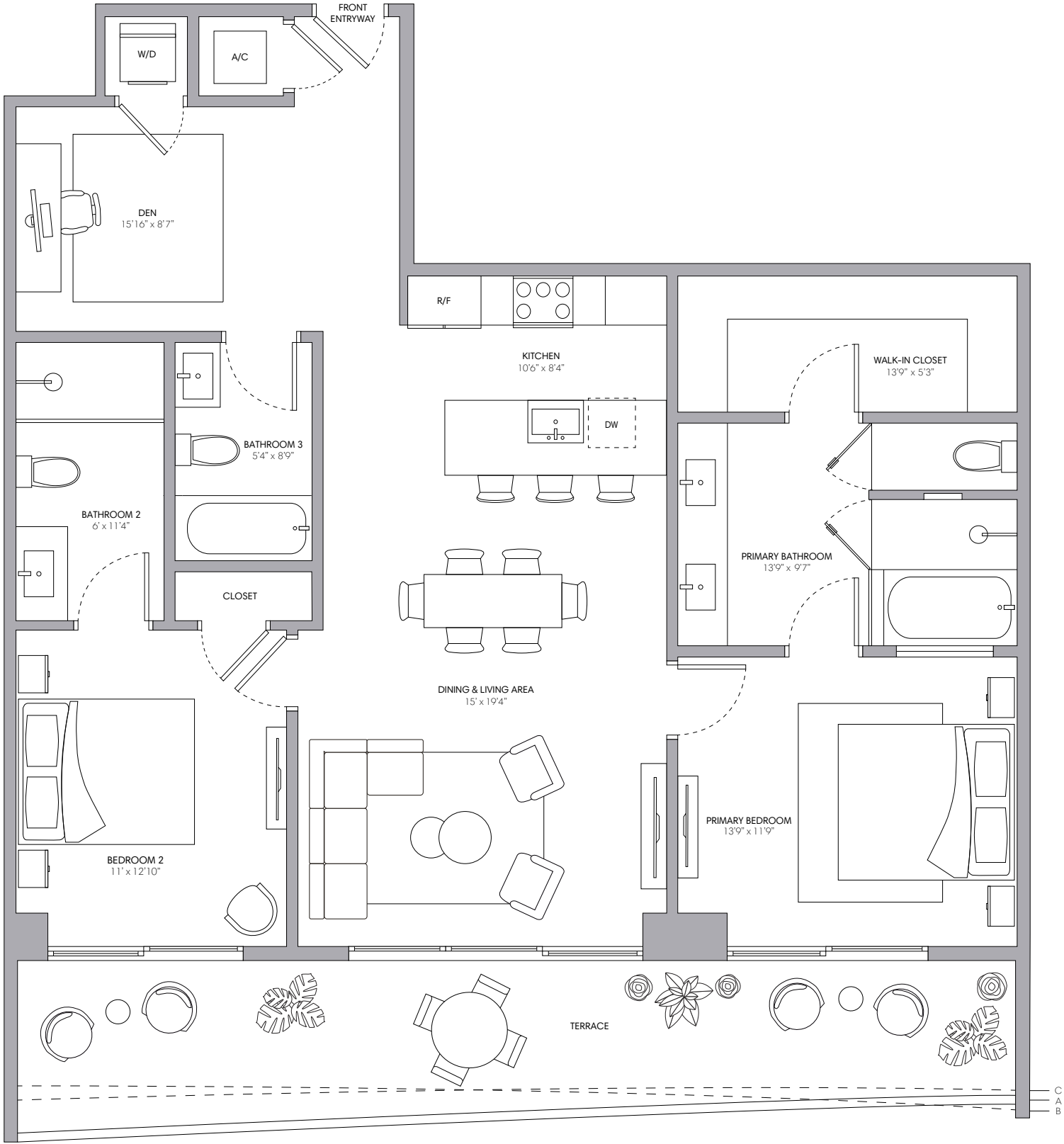
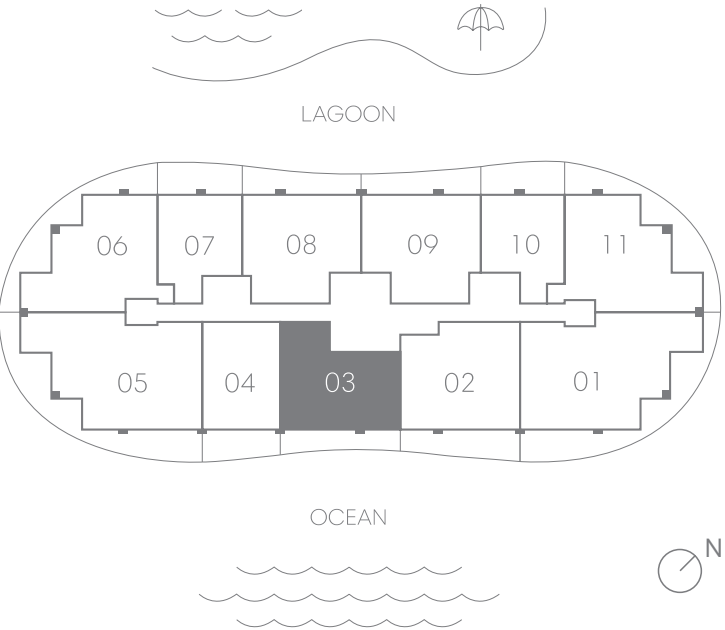


# Residence 03

2 BEDROOMS + DEN | 3 BATHROOMS

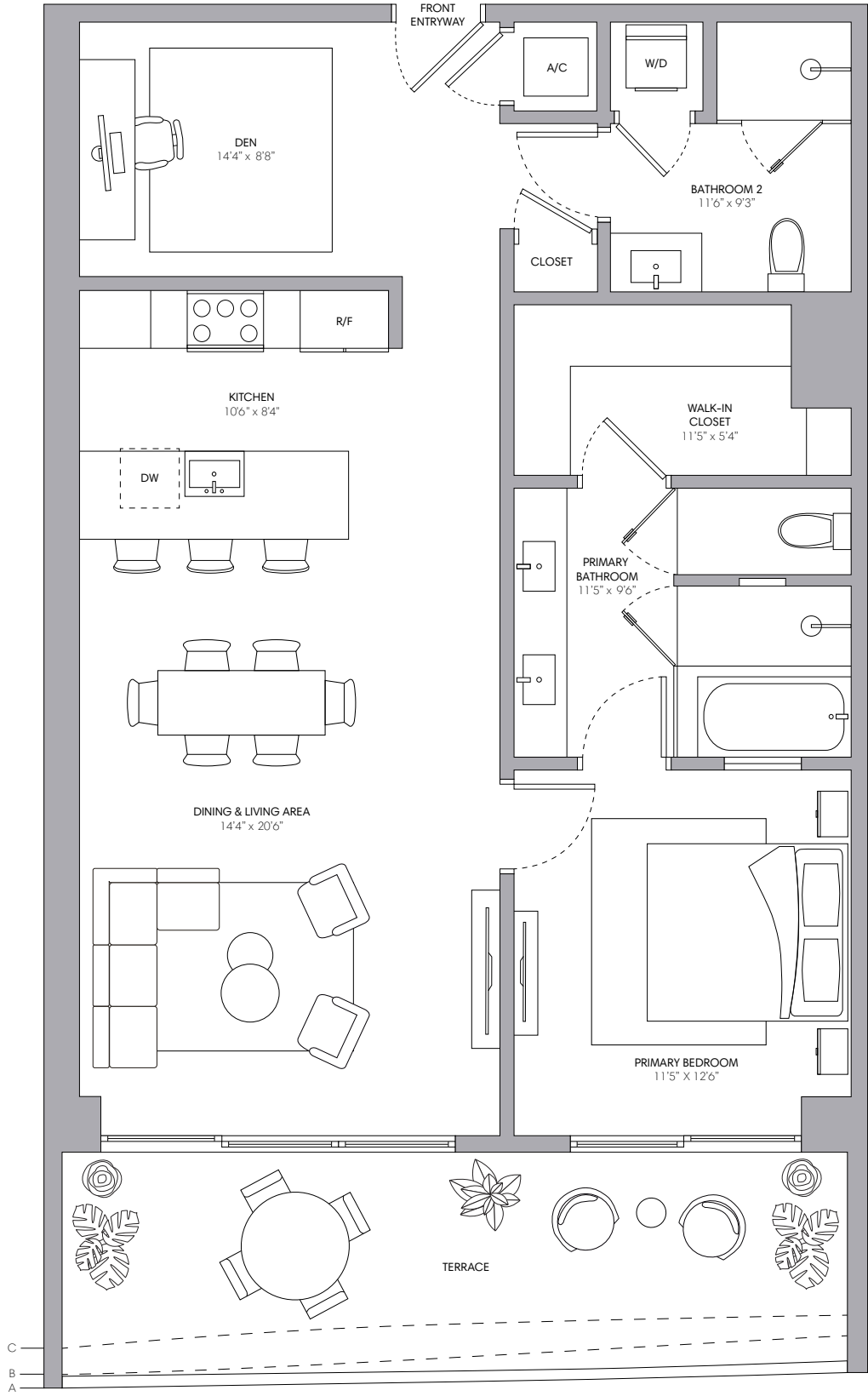
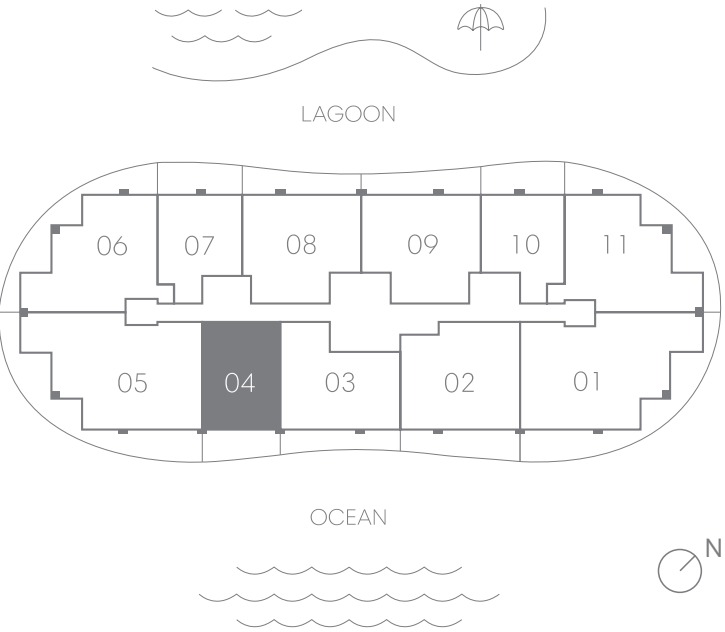
INTERIOR	1,334 SQ FT   124 SQ M
EXTERIOR A (Floors 10, 14, 17, 20, 23, 26, 29)	279 SQ FT   26 SQ M
EXTERIOR B (Floors 9, 12, 16, 19, 22, 25, 28)	251 SQ FT   23 SQ M
EXTERIOR C (Floors 8, 11, 15, 18, 21, 24, 27)	244 SQ FT   23 SQ M
TOTAL	1,578 - 1,613 SQ FT   147 - 150 SQ M



# Residence 04

1 BEDROOM + DEN | 2 BATHROOMS

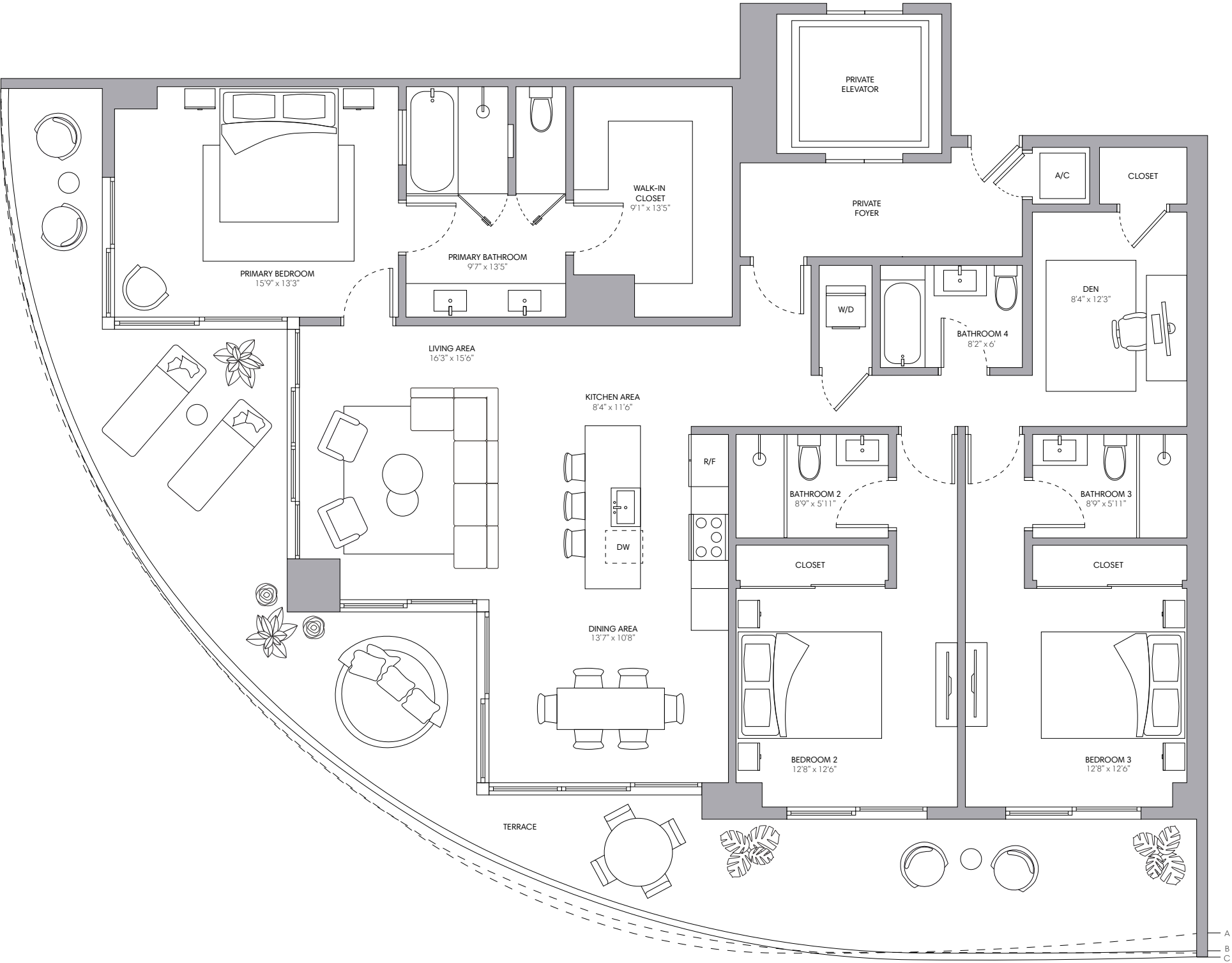
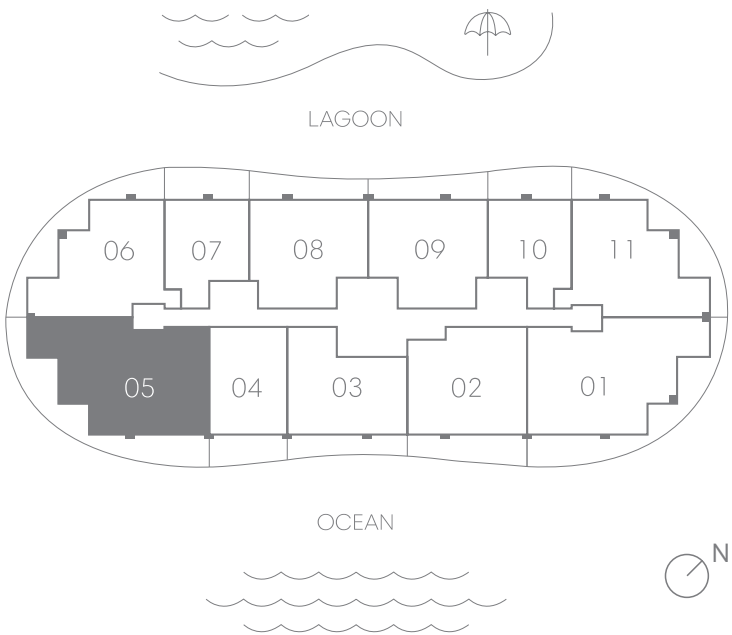
INTERIOR	1,081 SQ FT   100 SQ M
EXTERIOR A (Floors 10, 14, 17, 20, 23, 26, 29)	221 SQ FT   21 SQ M
EXTERIOR B (Floors 8, 11, 15, 18, 21, 24, 27)	200 SQ FT   28 SQ M
EXTERIOR C (Floors 9, 12, 16, 19, 22, 25, 28)	170 SQ FT   16 SQ M
TOTAL	1,251 - 1,302 SQ FT   116 - 128 SQ M



## Residence 05

3 BEDROOMS + DEN | 4 BATHROOMS

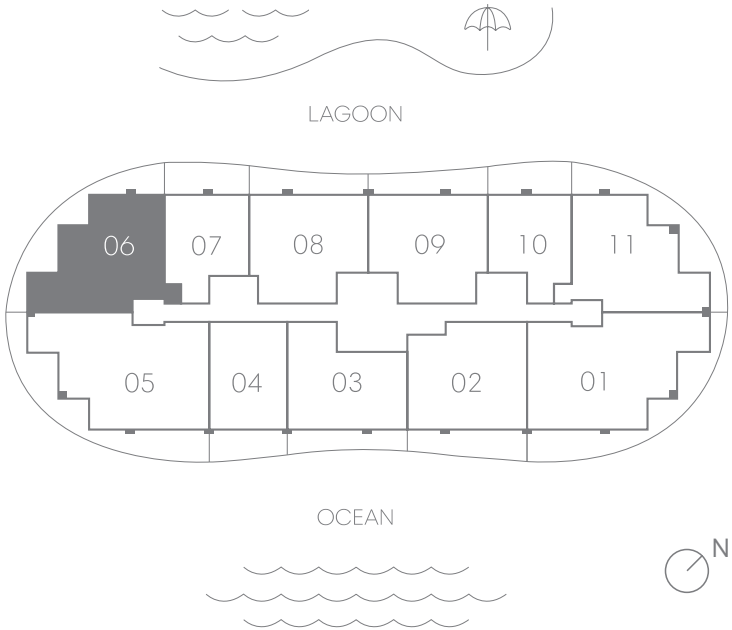
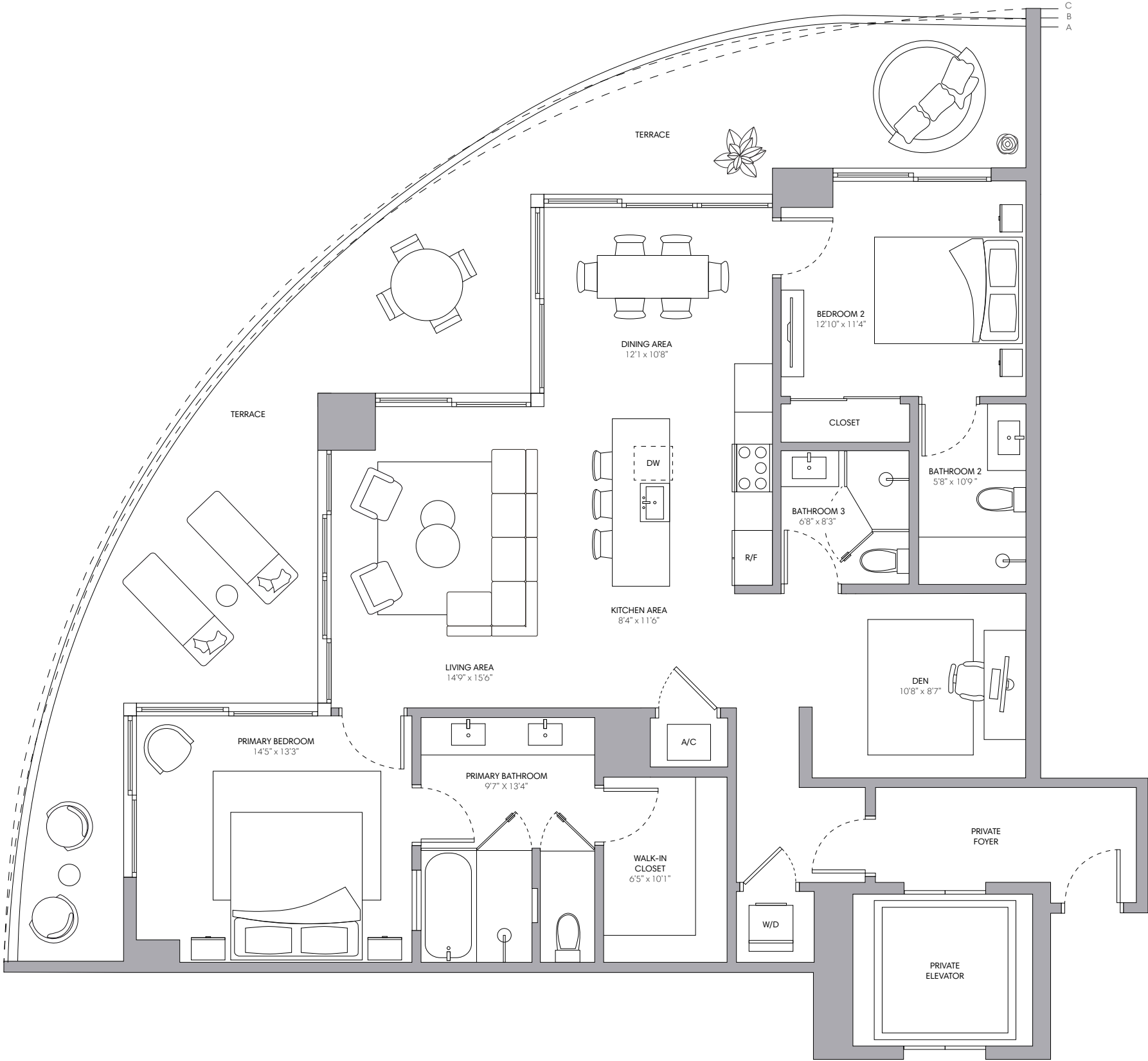
INTERIOR	2,130 SQ FT   198 SQ M
EXTERIOR A (Floors 9, 12, 16, 19, 22, 25, 28)	743 SQ FT   69 SQ M
EXTERIOR B (Floors 8, 11, 15, 18, 21, 24, 27)	734 SQ FT   70 SQ M
EXTERIOR C (Floors 7, 10, 14, 17, 20, 23, 26, 29)	726 SQ FT   67 SQ M
TOTAL	2,856 - 2,873 SQ FT   265 - 267 SQ M




# Residence 06

2 BEDROOMS + DEN | 3 BATHROOMS

INTERIOR	1,569 SQ FT   145 SQ M
EXTERIOR A (Floors 4, 7, 10, 14, 17, 20, 23, 26, 29)	623 SQ FT   58 SQ M
EXTERIOR B (Floors 2, 5, 8, 11, 15, 18, 21, 24, 27)	618 SQ FT   57 SQ M
EXTERIOR C (Floors 3, 6, 9, 12, 16, 19, 22, 25, 28)	594 SQ FT   55 SQ M
TOTAL	2,163 - 2,192 SQ FT   200 - 203 SQ M

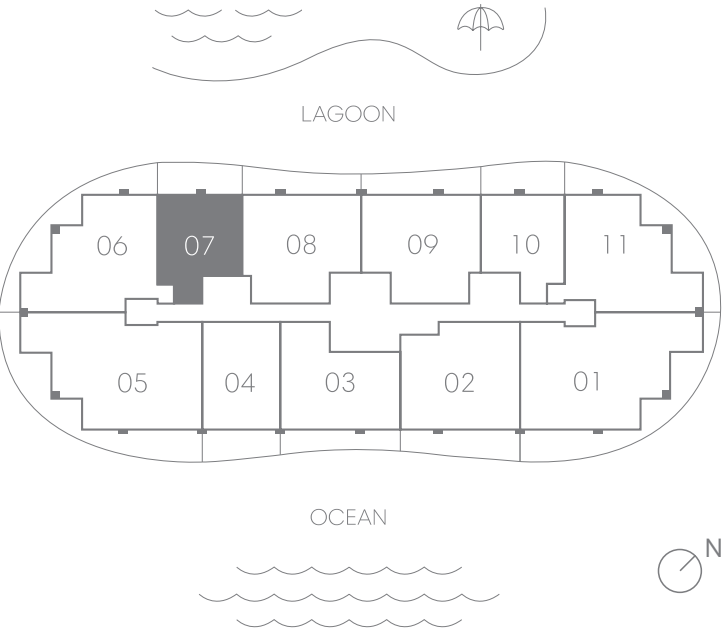



 Oral representations cannot be relied upon as correctly stating the representations of the developer. For correct representations, reference should be made to the documents required by Section 718.503, Florida Statutes, to be furnished by a developer to a buyer. The dimensions stated for any depicted unit floor plan are approximate because there are various recognized methods for calculating the square footage of a unit. The square footage stated herein is calculated from the exterior boundaries of the exterior walls to the centerline of interior demising walls without deductions for cutouts, curves, or architectural features. This method typically results in quoted dimensions greater than the dimensions that would be determined by using other accepted methods. The illustrations and images are conceptual. The floor plan, unit layout, locations of windows, doors, closets, plumbing fixtures, mechanical equipment, appliances, structural elements, architectural design elements and the uses, configurations, and entries to rooms may be changed based on final approved plans, permitting, and completed construction. The furniture layout and the use of space illustrated are suggested uses only and not intended to guaranty any specific use of space or accommodation of specific furnishings, furnishings, design features, fixtures, and décor illustrated are conceptual and may not be included with a unit purchase. Consult the developer's prospectus which will be provided to you by the developer to learn what is included with a unit purchase and to review the unit square footage calculation method to be relied upon, which is set forth in the developer's prospectus.

# Residence 07

1 BEDROOM | 1.5 BATHROOMS

INTERIOR	962 SQ FT   89 SQ M
EXTERIOR A (Floors 3, 9, 12, 16, 19, 22, 25, 28)	238 SQ FT   22 SQ M
EXTERIOR B (Floors 2, 5, 8, 11, 15, 18, 21, 24, 27)	232 SQ FT   22 SQ M
EXTERIOR C (Floors 4, 10, 14, 17, 20, 23, 26, 29)	203 SQ FT   19 SQ M
TOTAL	1,165 - 1,206 SQ FT   108 - 111 SQ M

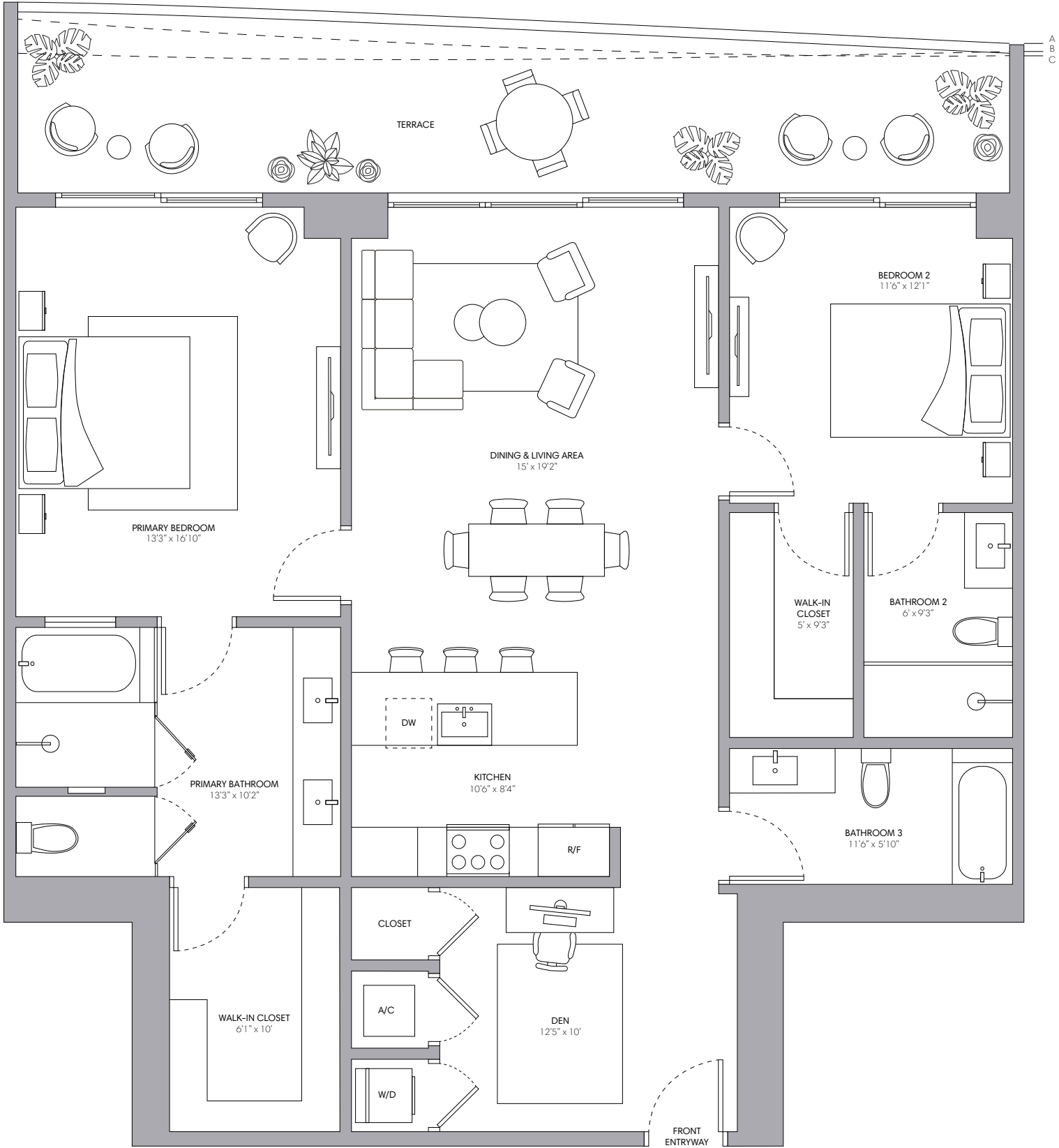
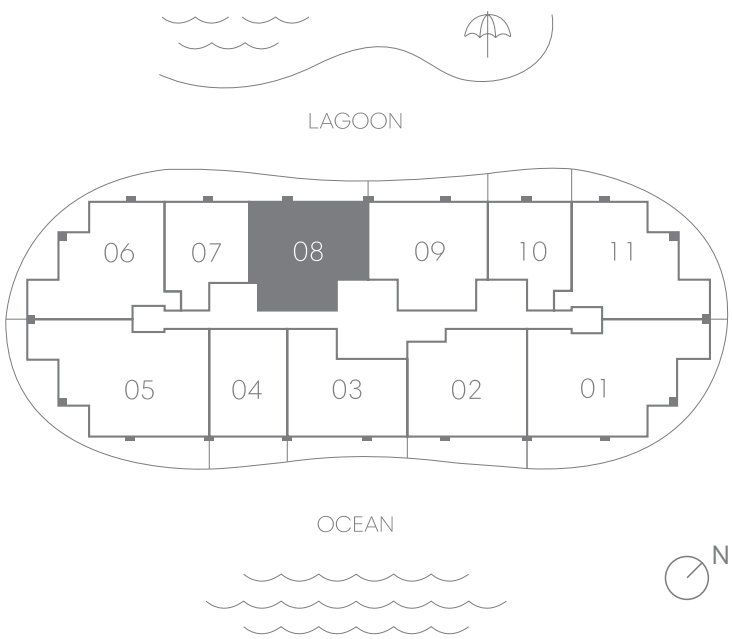



 Oral representations cannot be relied upon as correctly stating the representations of the developer. For correct representations, reference should be made to the documents required by Section 718.503, Florida Statutes, to be furnished by a developer to a buyer. The dimensions stated for any depicted unit floor plan are approximate because there are various recognized methods for calculating the square footage of a unit. The square footage stated herein is calculated from the exterior boundaries of the exterior walls to the centerline of interior demising walls without deductions for cutouts, curves, or architectural features. This method typically results in quoted dimensions greater than the dimensions that would be determined by using other accepted methods. The illustrations and images are conceptual. The floor plan, unit layout, locations of windows, doors, closets, plumbing fixtures, mechanical equipment, appliances, structural elements, architectural design elements and the uses, configurations, and entries to rooms may be changed based on final approved plans, permitting, and completed construction. The furniture layout and the use of space illustrated are suggested uses only and not intended to guaranty any specific use of space or accommodation of specific furnishings, furnishings, design features, fixtures, and décor illustrated are conceptual and may not be included with a unit purchase. Consult the developer's prospectus which will be provided to you by the developer to learn what is included with a unit purchase and to review the unit square footage calculation method to be relied upon, which is set forth in the developer's prospectus.

# Residence 08

2 BEDROOMS + DEN | 3 BATHROOMS

INTERIOR	1,462 SQ FT   136 SQ M
EXTERIOR A (Floors 3, 6, 9, 12, 16, 19, 22, 25, 28, 31)	299 SQ FT   28 SQ M
EXTERIOR B (Floors 8, 11, 15, 18, 21, 24, 27, 30)	264 SQ FT   25 SQ M
EXTERIOR C (Floors 4, 10, 14, 17, 20, 23, 26, 29)	240 SQ FT   22 SQ M
TOTAL	1,702 - 1,761 SQ FT   158 - 164 SQ M

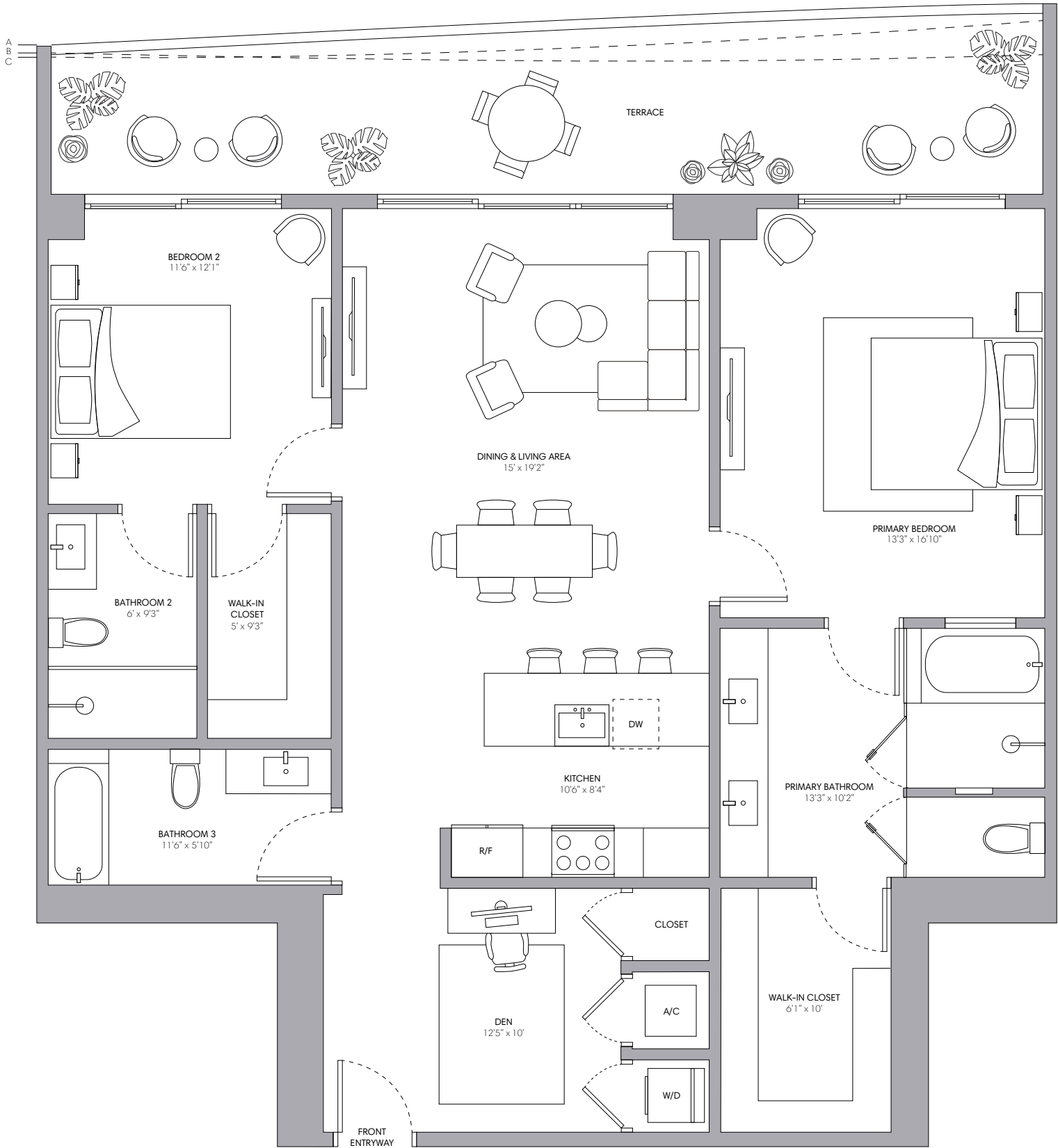
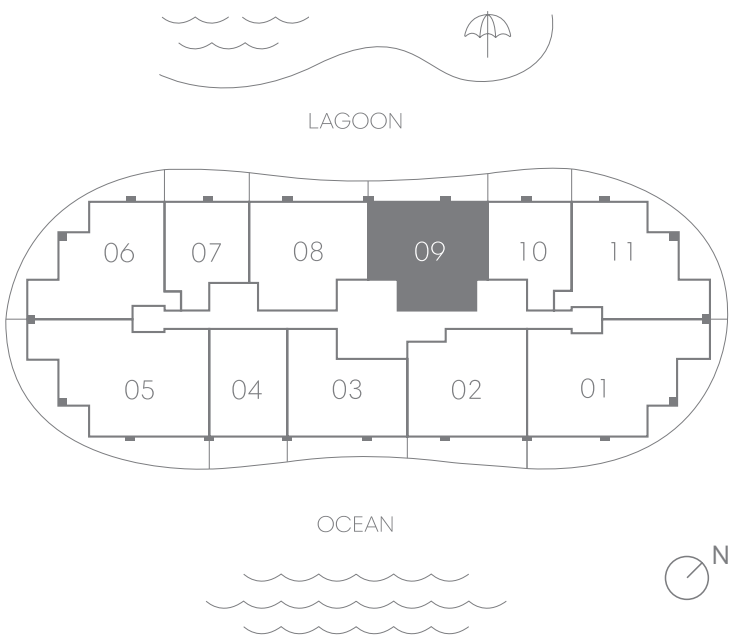


 Oral representations cannot be relied upon as correctly stating the representations of the developer. For correct representations, reference should be made to the documents required by Section 718.503, Florida Statutes, to be furnished by a developer to a buyer. The dimensions stated for any depicted unit floor plan are approximate because there are various recognized methods for calculating the square footage of a unit. The square footage stated herein is calculated from the exterior boundaries of the exterior walls to the centerline of interior demising walls without deductions for cutouts, curves, or architectural features. This method typically results in quoted dimensions greater than the dimensions that would be determined by using other accepted methods. The illustrations and images are conceptual. The floor plan, unit layout, locations of windows, doors, closets, plumbing fixtures, mechanical equipment, appliances, structural elements, architectural design elements and the uses, configurations, and entries to rooms may be changed based on final approved plans, permitting, and completed construction. The furniture layout and the use of space illustrated are suggested uses only and not intended to guaranty any specific use of space or accommodation of specific furnishings, furnishings, design features, fixtures, and décor illustrated are conceptual and may not be included with a unit purchase. Consult the developer's prospectus which will be provided to you by the developer to learn what is included with a unit purchase and to review the unit square footage calculation method to be relied upon, which is set forth in the developer's prospectus.

# Residence 09

2 BEDROOMS + DEN | 3 BATHROOMS

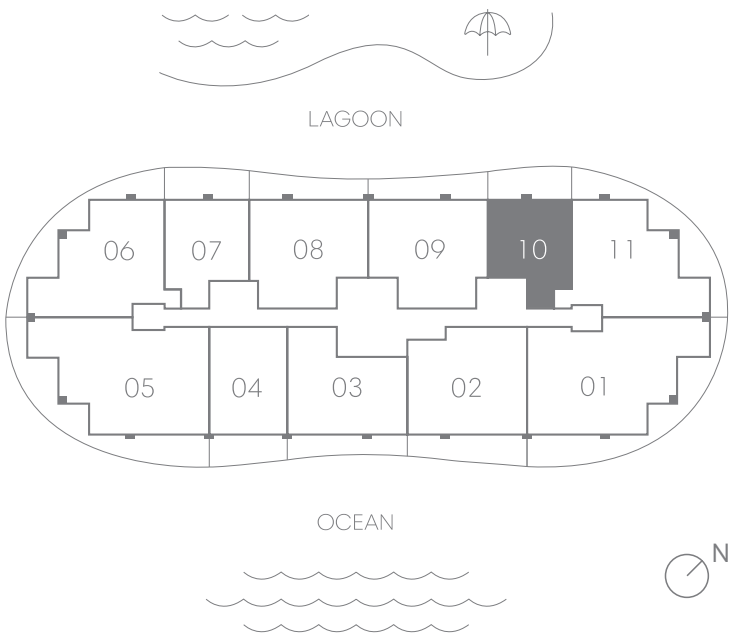
INTERIOR	1,462 SQ FT   136 SQ M
EXTERIOR A (Floors 4, 10, 14, 17, 20, 23, 26, 29)	290 SQ FT   27 SQ M
EXTERIOR B (Floors 2, 5, 8, 11, 15, 18, 21, 24, 27, 30)	264 SQ FT   25 SQ M
EXTERIOR C (Floors 3, 9, 12, 16, 19, 22, 25, 28)	249 SQ FT   23 SQ M
TOTAL	1,711 - 1,752 SQ FT   159 - 163 SQ M




# Residence 10

1 BEDROOMS | 1.5 BATHROOMS

INTERIOR	962 SQ FT   89 SQ M
EXTERIOR A (Floors 4, 7, 10, 14, 17, 20, 23, 26, 29)	234 SQ FT   22 SQ M
EXTERIOR B (Floors 2, 5, 8, 11, 15, 18, 21, 24, 27)	232 SQ FT   22 SQ M
EXTERIOR C (Floors 3, 6, 9, 12, 16, 19, 22, 25, 28)	208 SQ FT   19 SQ M
TOTAL	1,165 - 1,206 SQ FT   108 - 111 SQ M



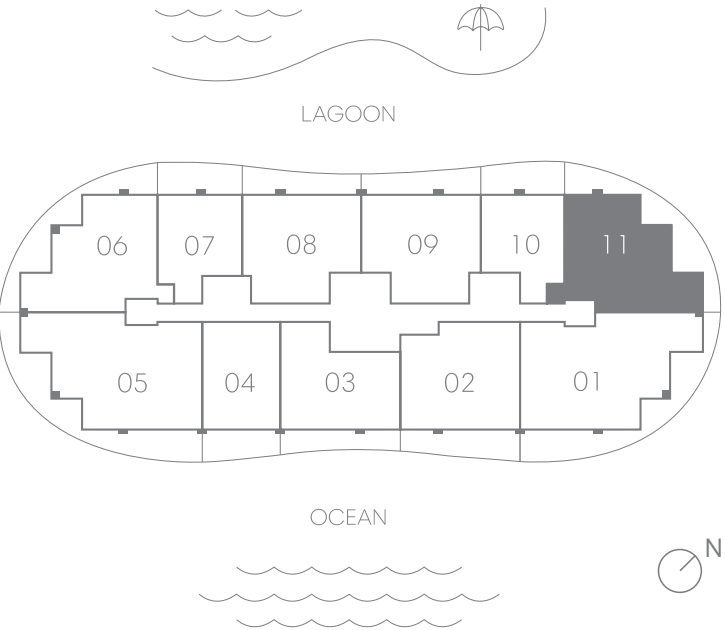
 Oral representations cannot be relied upon as correctly stating the representations of the developer. For correct representations, reference should be made to the documents required by Section 718.503, Florida Statutes, to be furnished by a developer to a buyer. The dimensions stated for any depicted unit floor plan are approximate because there are various recognized methods for calculating the square footage of a unit. The square footage stated herein is calculated from the exterior boundaries of the exterior walls to the centerline of interior demising walls without deductions for cutouts, curves, or architectural features. This method typically results in quoted dimensions greater than the dimensions that would be determined by using other accepted methods. The illustrations and images are conceptual. The floor plan, unit layout, locations of windows, doors, closets, plumbing fixtures, mechanical equipment, appliances, structural elements, architectural design elements and the uses, configurations, and entries to rooms may be changed based on final approved plans, permitting, and completed construction. The furniture layout and the use of space illustrated are suggested uses only and not intended to guaranty any specific use of space or accommodation of specific furnishings, furnishings, design features, fixtures, and décor illustrated are conceptual and may not be included with a unit purchase. Consult the developer's prospectus which will be provided to you by the developer to learn what is included with a unit purchase and to review the unit square footage calculation method to be relied upon, which is set forth in the developer's prospectus.



# Residence II

2 BEDROOMS + DEN | 3 BATHROOMS

INTERIOR	1,571 SQ FT   146 SQ M
EXTERIOR A (Floors 3, 6, 9, 12, 16, 19, 22, 25, 28)	625 SQ FT   58 SQ M
EXTERIOR B (Floors 2, 5, 8, 11, 15, 18, 21, 24, 27)	618 SQ FT   57 SQ M
EXTERIOR C (Floors 4, 7, 10, 14, 17, 20, 23, 26, 29)	601 SQ FT   56 SQ M
TOTAL	2,172 - 2,196 SQ FT   202 - 204 SQ M

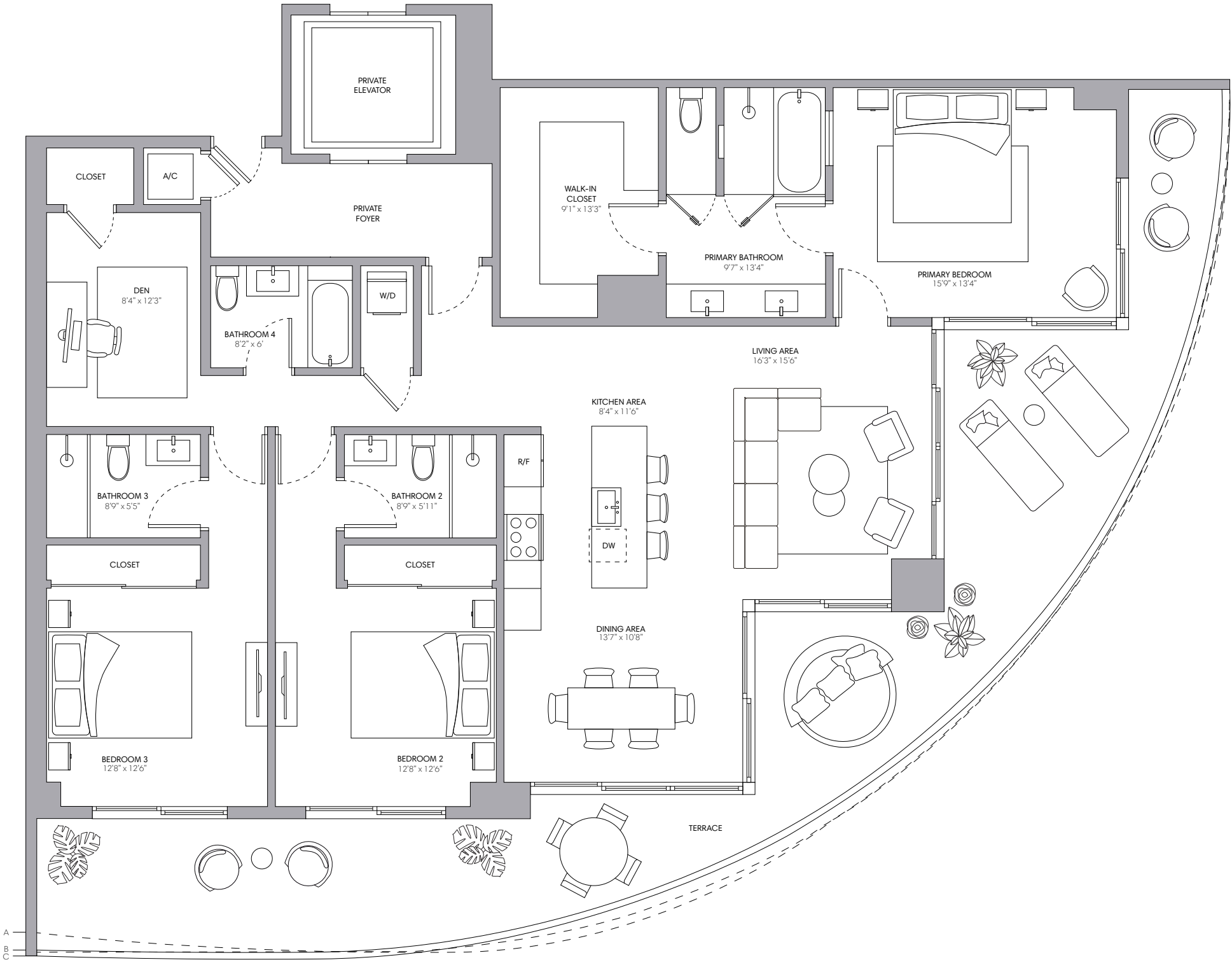
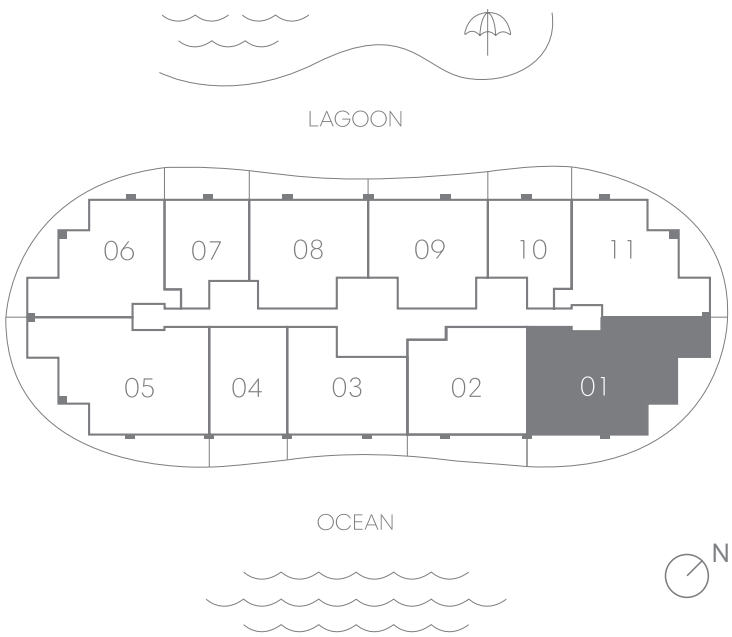


Oral representations cannot be relied upon as correctly stating the representations of the developer. For correct representations, reference should be made to the documents required by Section 718.503, Florida Statutes, to be furnished by a developer to a buyer. The dimensions stated for any depicted unit floor plan are approximate because there are various recognized methods for calculating the square footage of a unit. The square footage stated herein is calculated from the exterior boundaries of the exterior walls to the centerline of interior demising walls without deductions for cutouts, curves, or architectural features. This method typically results in quoted dimensions greater than the dimensions that would be determined by using other accepted methods. The illustrations and images are conceptual. The floor plan, unit layout, locations of windows, doors, closets, plumbing fixtures, mechanical equipment, appliances, structural elements, architectural design elements and the uses, configurations, and entries to rooms may be changed based on final approved plans, permitting, and completed construction. The furniture layout and the use of space illustrated are suggested uses only and not intended to guaranty any specific use of space or accommodation of specific furnishings, furnishings, design features, fixtures, and décor illustrated are conceptual and may not be included with a unit purchase. Consult the developer's prospectus which will be provided to you by the developer to learn what is included with a unit purchase and to review the unit square footage calculation method to be relied upon, which is set forth in the developer's prospectus.

# Residence 01

3 BEDROOMS + DEN | 4 BATHROOMS

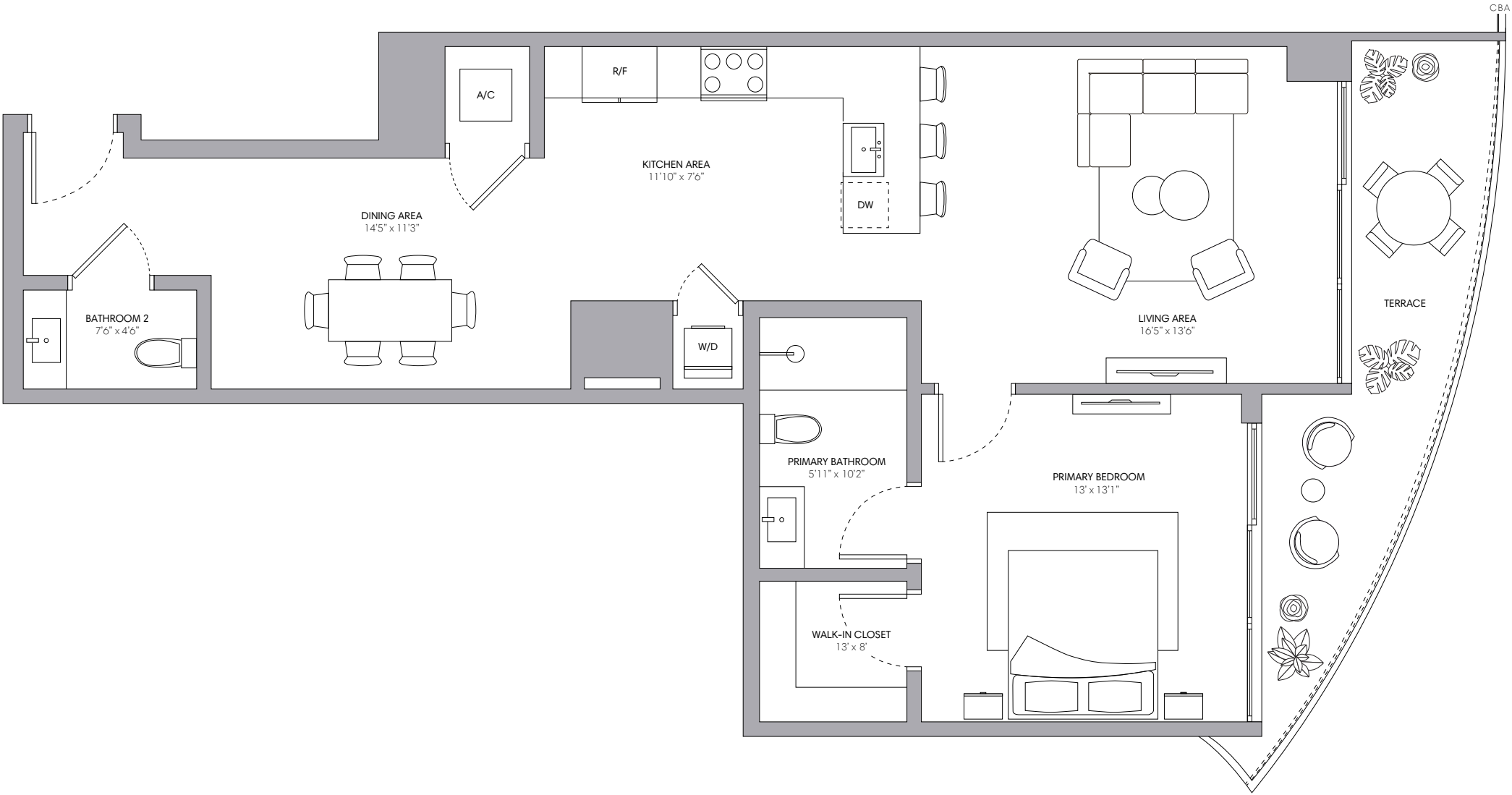
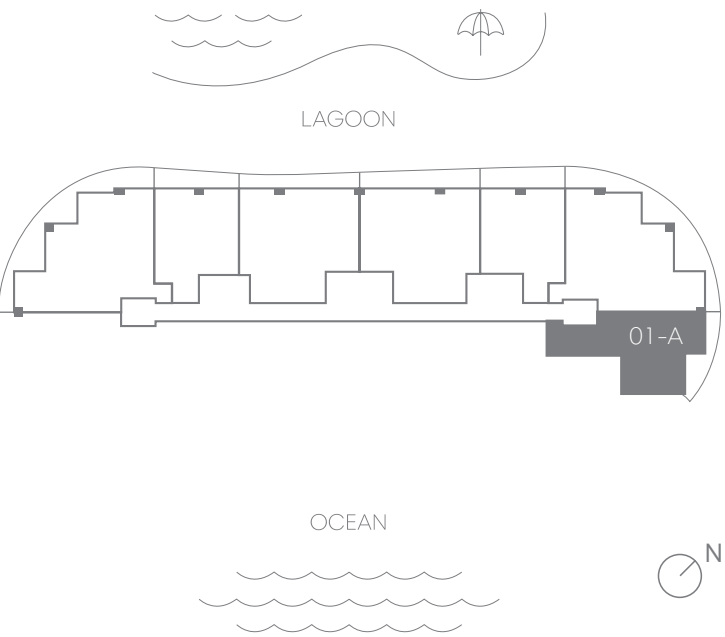
INTERIOR	2,131 SQ FT   198 SQ M
EXTERIOR A (Floors 10, 14, 17, 20, 23, 26, 29)	747 SQ FT   69 SQ M
EXTERIOR B (Floors 8, 11, 15, 18, 21, 24, 27)	733 SQ FT   68 SQ M
EXTERIOR C (Floors 9, 12, 16, 19, 22, 25, 28)	732 SQ FT   68 SQ M
TOTAL	2,863 - 2,878 SQ FT   266 - 267 SQ M




# Residence 01-A

1 BEDROOM | 1.5 BATHROOMS

INTERIOR	982 SQ FT   91 SQ M
EXTERIOR A (Floor 4)	153 SQ FT   14 SQ M
EXTERIOR B (Floors 2, 5)	153 SQ FT   14 SQ M
EXTERIOR C (Floor 3)	153 SQ FT   14 SQ M
TOTAL	1,135 SQ FT   105 SQ M



 Oral representations cannot be relied upon as correctly stating the representations of the developer. For correct representations, reference should be made to the documents required by Section 718.503, Florida Statutes, to be furnished by a developer to a buyer. The dimensions stated for any depicted unit floor plan are approximate because there are various recognized methods for calculating the square footage of a unit. The square footage stated herein is calculated from the exterior boundaries of the exterior walls to the centerline of interior demising walls without deductions for cutouts, curves, or architectural features. This method typically results in quoted dimensions greater than the dimensions that would be determined by using other accepted methods. The illustrations and images are conceptual. The floor plan, unit layout, locations of windows, doors, closets, plumbing fixtures, mechanical equipment, appliances, structural elements, architectural design elements and the uses, configurations, and entries to rooms may be changed based on final approved plans, permitting, and completed construction. The furniture layout and the use of space illustrated are suggested uses only and not intended to guaranty any specific use of space or accommodation of specific furnishings, furnishings, design features, fixtures, and décor illustrated are conceptual and may not be included with a unit purchase. Consult the developer's prospectus which will be provided to you by the developer to learn what is included with a unit purchase and to review the unit square footage calculation method to be relied upon, which is set forth in the developer's prospectus.

# Residence 02

2 BEDROOMS + DEN | 3 BATHROOMS

INTERIOR	1,545 SQ FT   143 SQ M
EXTERIOR A (Floors 9, 12, 16, 19, 22, 25, 28)	313 SQ FT   29 SQ M
EXTERIOR B (Floors 8, 11, 15, 18, 21, 24, 27)	284 SQ FT   26 SQ M
EXTERIOR C (Floors 10, 14, 17, 20, 23, 26, 29)	259 SQ FT   24 SQ M
TOTAL	1,804 - 1,858 SQ FT   167 - 172 SQ M

