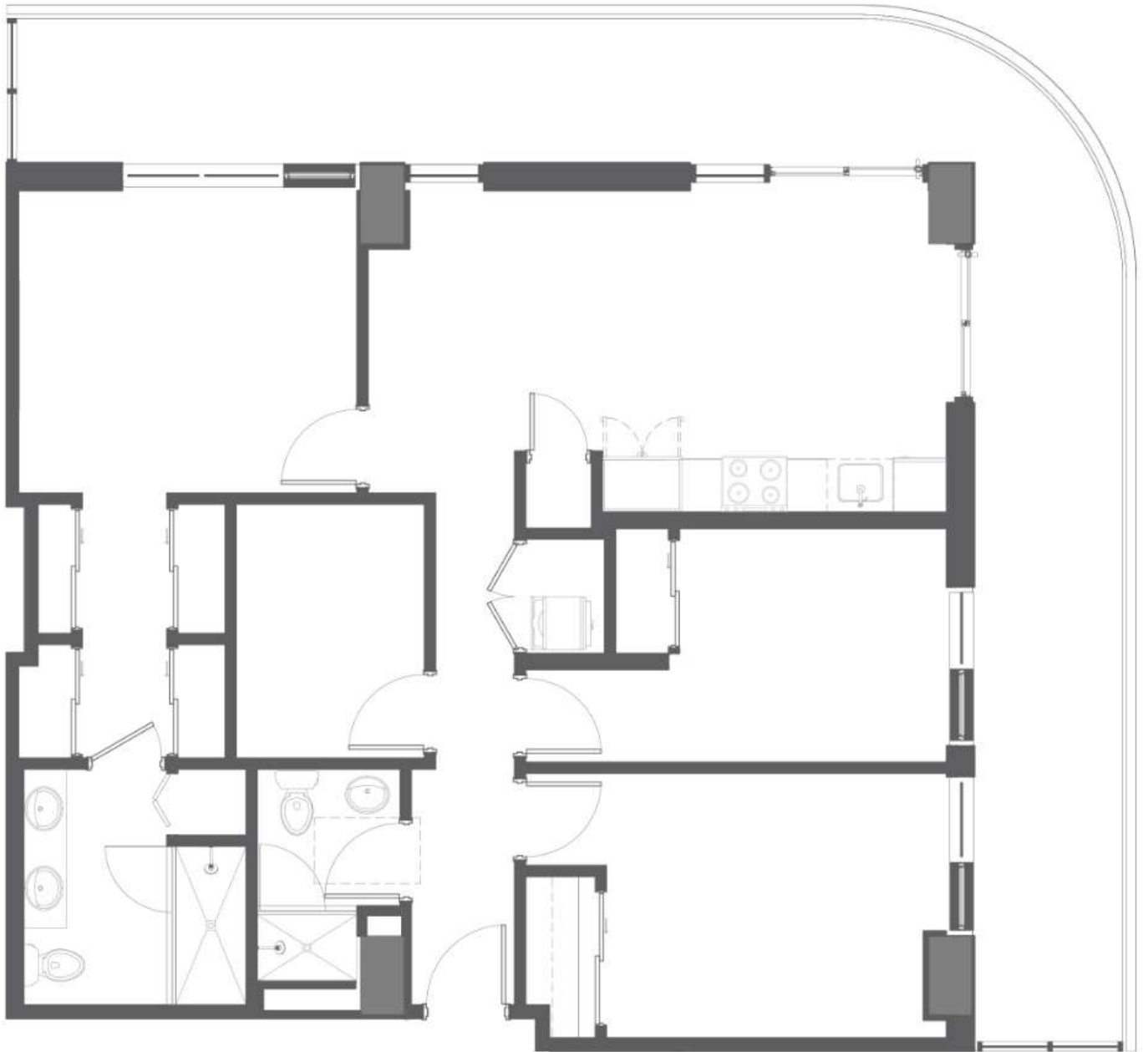
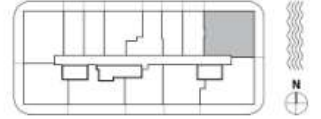


RESIDENCE
MODEL 01

3 BEDROOMS
2 BATHROOMS
+ DEN

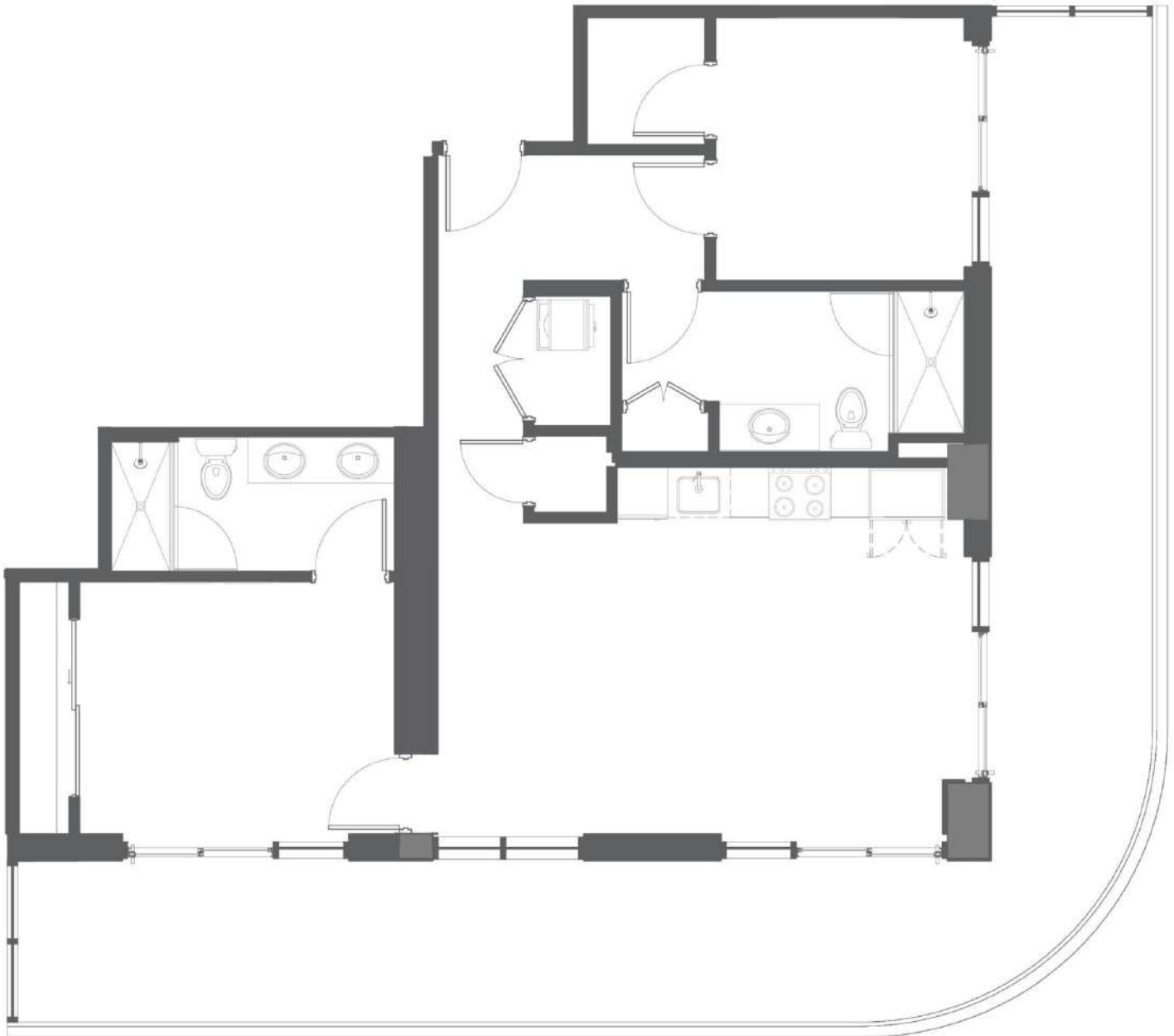
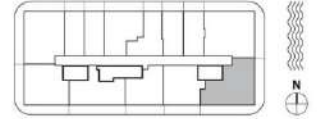
INTERIOR	1,117 SF	104 M ²
EXTERIOR	507 SF	47 M ²
TOTAL	1,624 SF	151 M ²



RESIDENCE
MODEL 02

2 BEDROOMS
2 BATHROOMS

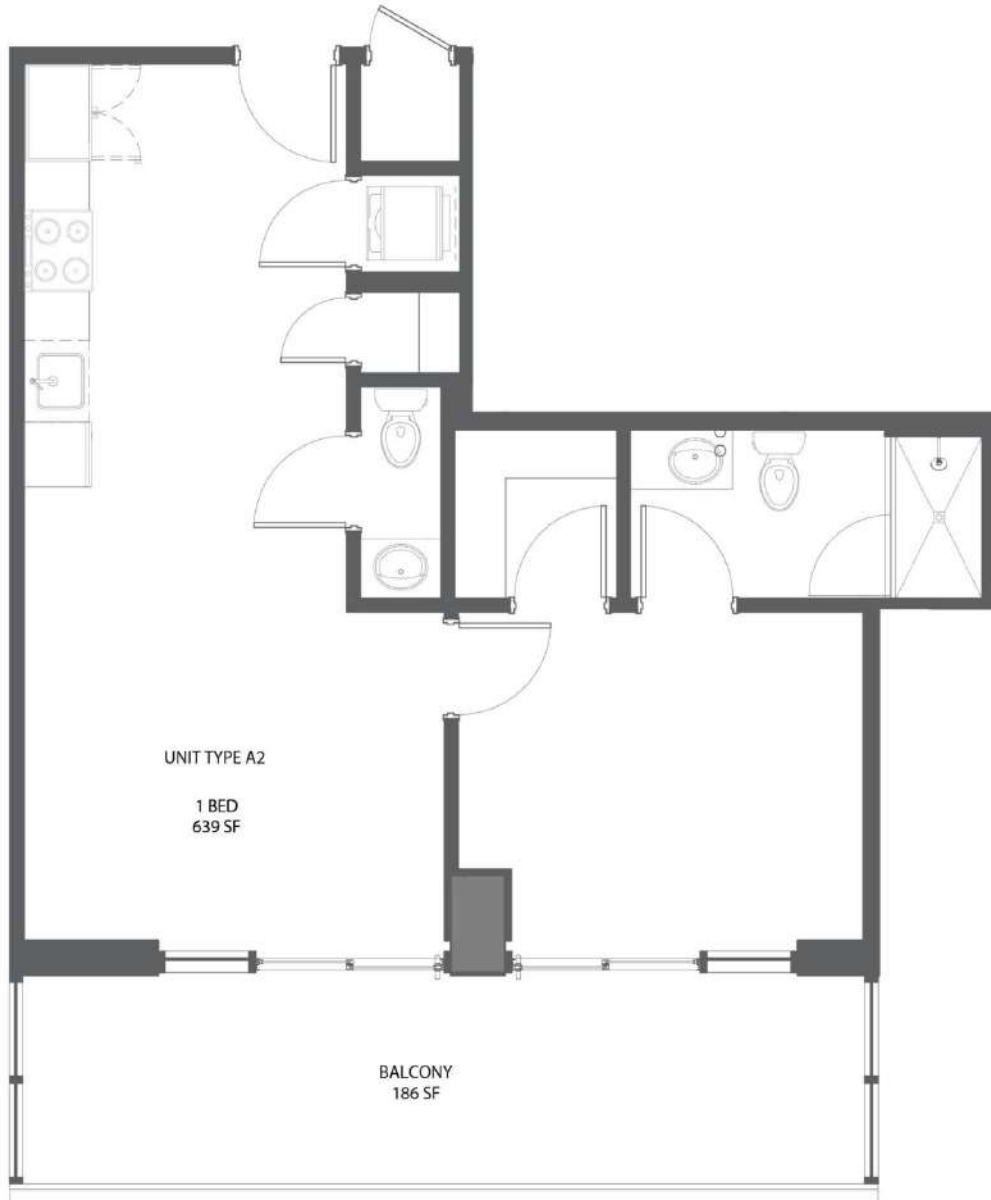
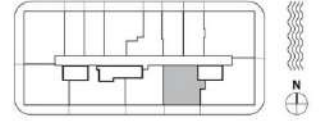
INTERIOR	995 SF	92 M ²
EXTERIOR	524 SF	49 M ²
TOTAL	1,519 SF	141 M ²



RESIDENCE
MODEL 04

1 BEDROOMS
1.5 BATHROOMS

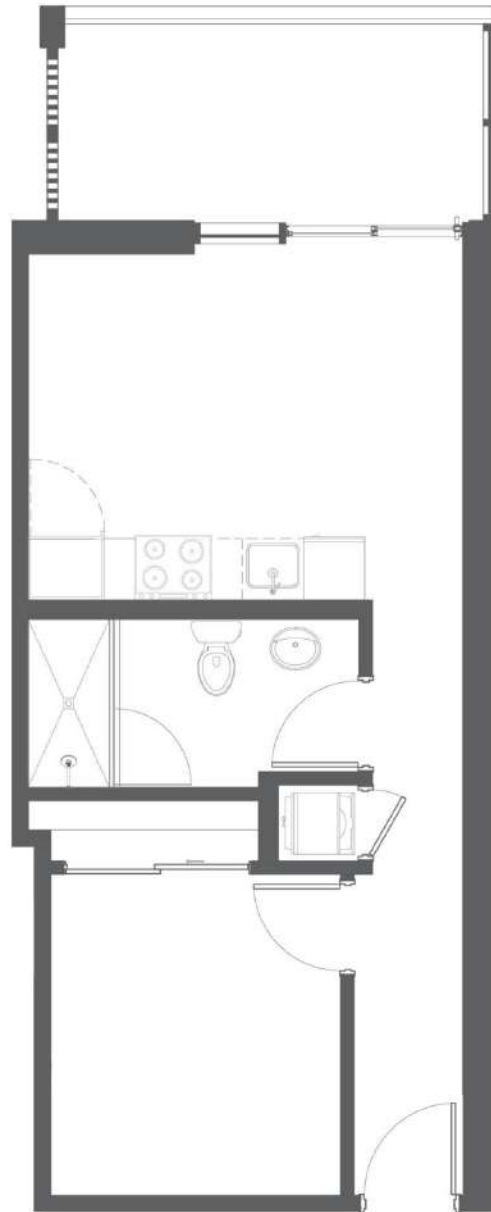
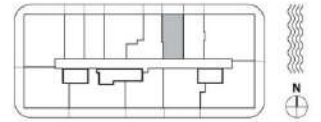
INTERIOR	639 SF	59 M ²
EXTERIOR	186 SF	17 M ²
TOTAL	825 SF	77 M ²

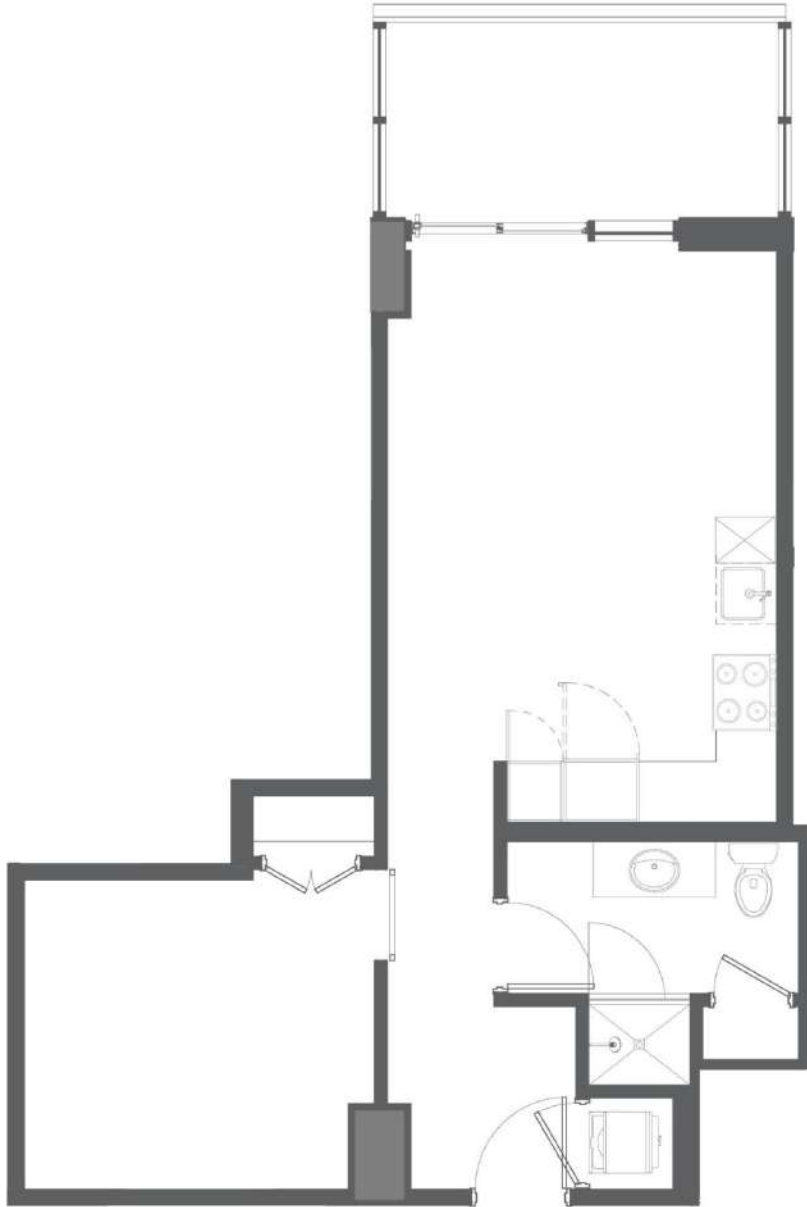
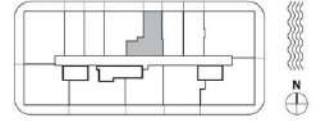


RESIDENCE
MODEL 05

1 JR. BEDROOMS
1 BATHROOMS

INTERIOR	486 SF	45 M ²
EXTERIOR	101 SF	9 M ²
TOTAL	587 SF	55 M ²

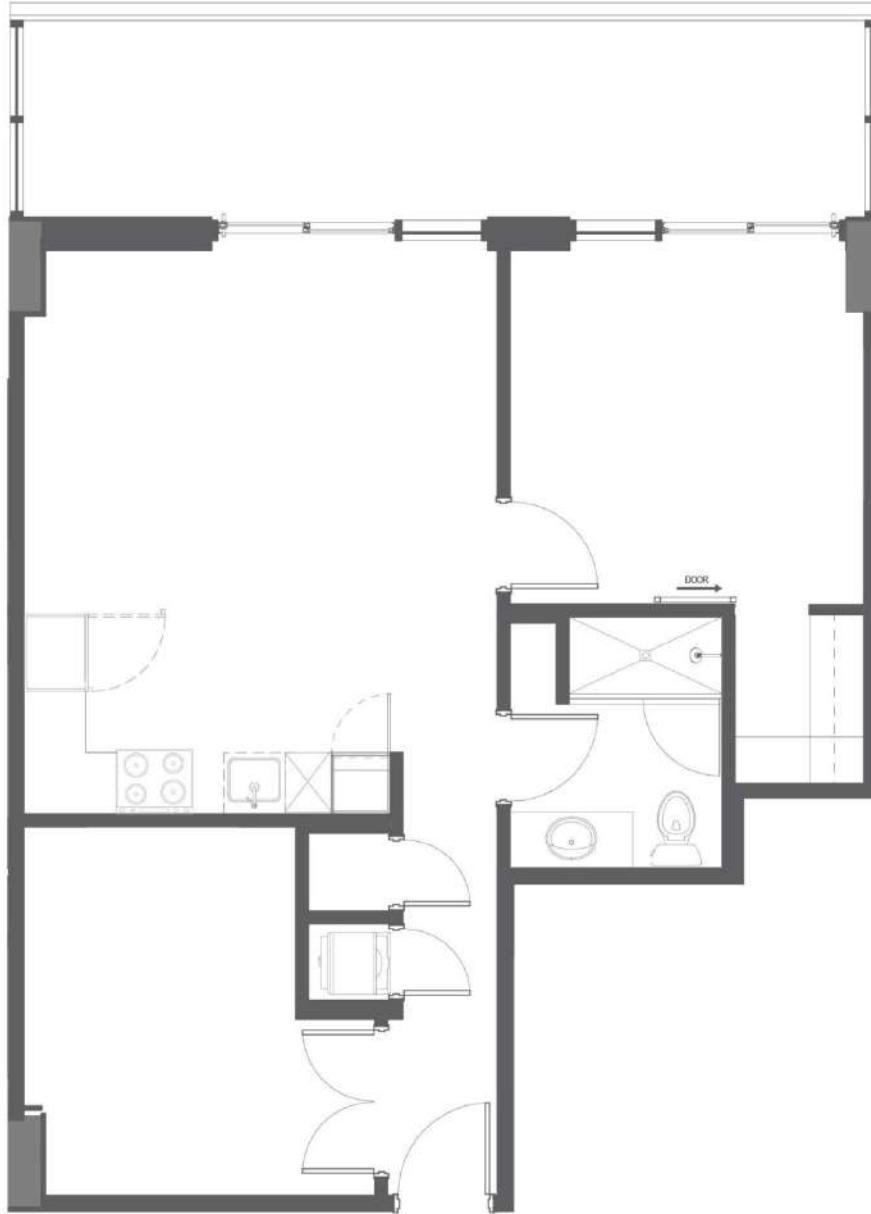




RESIDENCE
MODEL 09

2 BEDROOMS
1 BATHROOMS

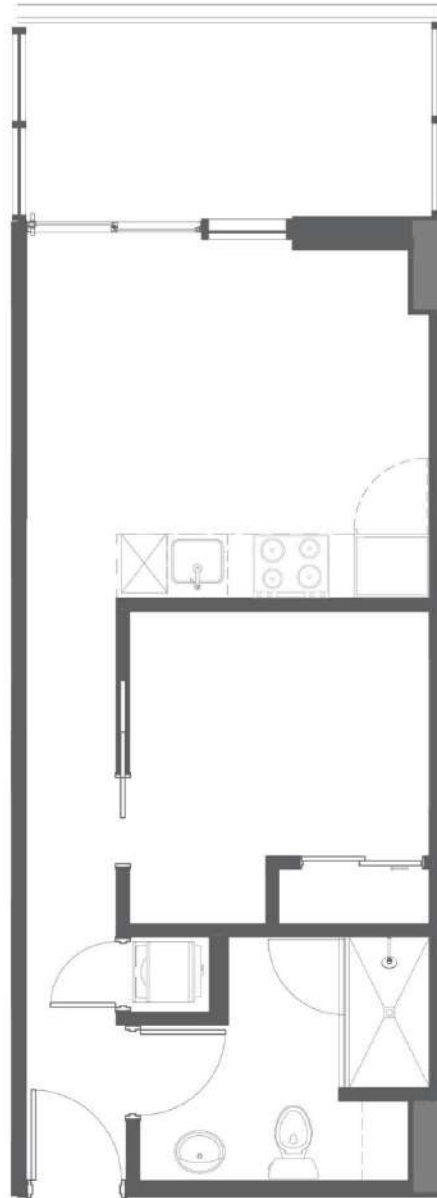
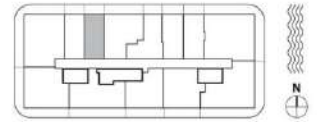
INTERIOR	755 SF	70 M ²
EXTERIOR	196 SF	18 M ²
TOTAL	951 SF	88 M ²



RESIDENCE
MODEL 11

1 BEDROOMS
1 BATHROOMS

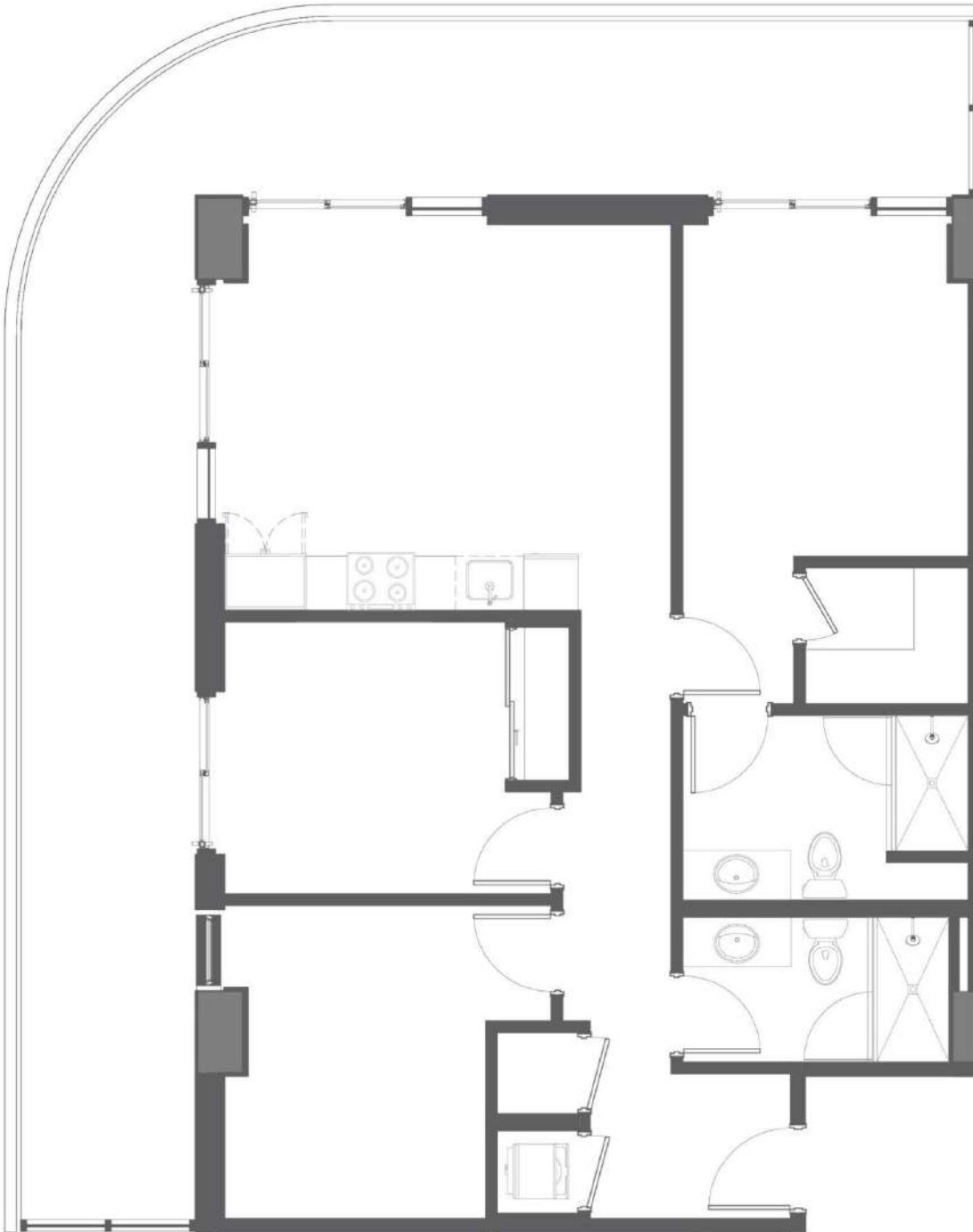
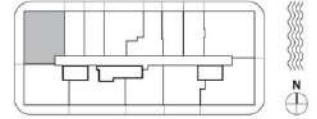
INTERIOR	466 SF	43 M ²
EXTERIOR	102 SF	9 M ²
TOTAL	568 SF	53 M ²



RESIDENCE
MODEL 12

3 BEDROOMS
2 BATHROOMS

INTERIOR	1,042 SF	97 M ²
EXTERIOR	483 SF	45 M ²
TOTAL	1,525 SF	142 M ²



Exclusive sales & marketing by
CERVERA
REAL ESTATE GROUP



ORAL REPRESENTATIONS CANNOT BE RELIED UPON AS CORRECTLY STATING THE REPRESENTATIONS OF THE DEVELOPER. FOR CORRECT REPRESENTATIONS, MAKE REFERENCE TO THIS BROCHURE AND TO THE DOCUMENTS REQUIRED BY SECTION 718.503, FLORIDA STATUTES, TO BE FURNISHED BY A DEVELOPER TO A BUYER OR LESSEE.

* This is not intended to be an offer to sell, or solicitation to buy, condominium units to residents of any jurisdiction where prohibited by law, and your eligibility for purchase will depend upon your state of residency. The offering is made only by the prospectus for the condominium and no statement should be relied upon if not made in the prospectus. Stated interior square footage is measured to the exterior face of exterior walls and to the centerline of interior demising walls or to the exterior face of walls adjoining corridors or other common elements or shared facilities without excluding areas that may be occupied by columns or other structural components. This method of measurement varies from, and is larger than, the dimensions that would be determined by using the description and the definition of the Unit set forth in the Declaration (which generally only includes the interior airspace between the perimeter walls and excludes structural components). For reference, the area of the unit, determined in accordance with the unit boundaries set forth in the Declaration is set forth in Exhibit "3" to the Declaration. All dimensions are approximate and may vary with actual construction.