

SKY  
RESIDENCE

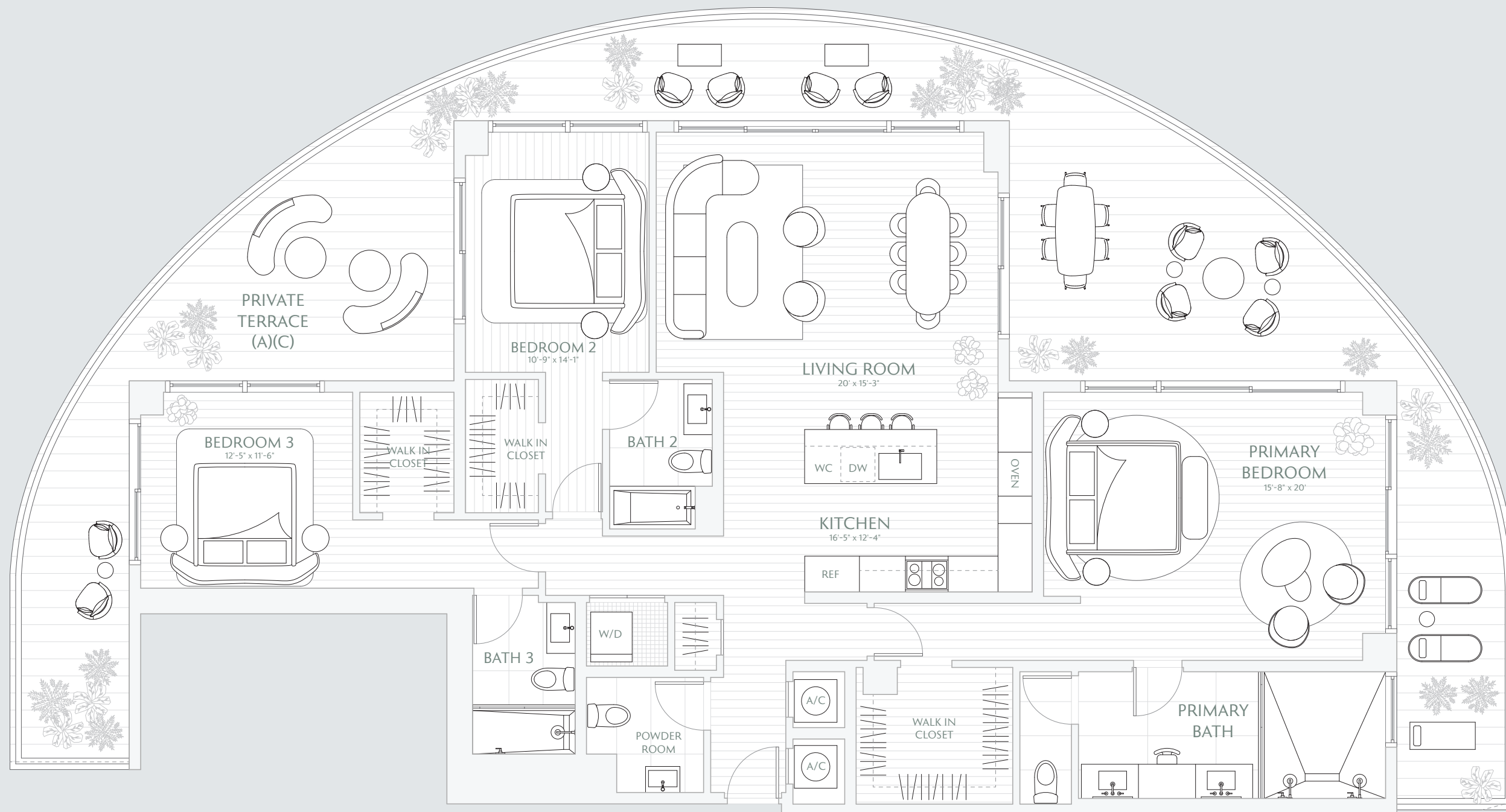
# 01

FLOORS 24 - 30

3 BEDROOMS  
3.5 BATHS  
PRIVATE TERRACE

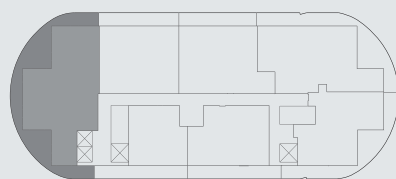
INTERIOR 2,080 SF / 193.2 M<sup>2</sup>  
EXTERIOR 1,046 SF / 97.1 M<sup>2</sup>  
TOTAL 3,126 SF / 290.4 M<sup>2</sup>

TERRACE A: 1,046 SF / 97.1 M<sup>2</sup>  
TERRACE B: 1,044 SF / 96.9 M<sup>2</sup>  
TERRACE C: 1,047 SF / 97.2 M<sup>2</sup>



Waterfront

Sunset  
& City



Atlantic  
Ocean

Downtown Skyline  
& Water



Stated interior square footage is measured to the exterior face of exterior walls and to the centerline of interior demising walls or to the exterior face of walls adjoining corridors or other common elements without excluding areas that may be occupied by columns or other structural components. This method of measurement varies from, and is larger than, the dimensions that would be determined by using the description and the definition of the Unit set forth in the Declaration (which generally only includes the interior airspace between the perimeter walls and excludes structural components). For reference, the area of the unit, determined in accordance with the unit boundaries set forth in the Declaration is set forth in Exhibit "3" to the Declaration. All dimensions are approximate and may vary with actual construction. Note that measurements of rooms set forth on this floor plan are generally taken at the greatest points of each given room (as if the room were a perfect rectangle), without regard for any cutouts or irregularities. Accordingly, the area of the actual room will typically be smaller than the product obtained by multiplying the stated length times width. All floor plans and development plans are subject to change. The Developer expressly reserves the right to make modifications, revisions, and changes it deems desirable in its sole and absolute discretion. All depictions of furnishings, appliances, built-ins, counters, soffits, floor coverings, lighting, landscaping and other matters of detail, including, without limitation, items of finish and decoration, are conceptual only and are not necessarily included in each Unit. Consult your prospectus and Purchase Agreement.

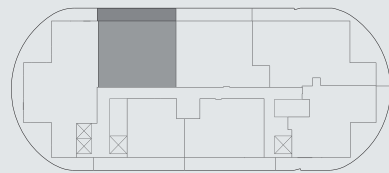
SKY  
RESIDENCE  
**02**

FLOORS 24 - 30

2 BEDROOMS  
2.5 BATHS  
PRIVATE TERRACES

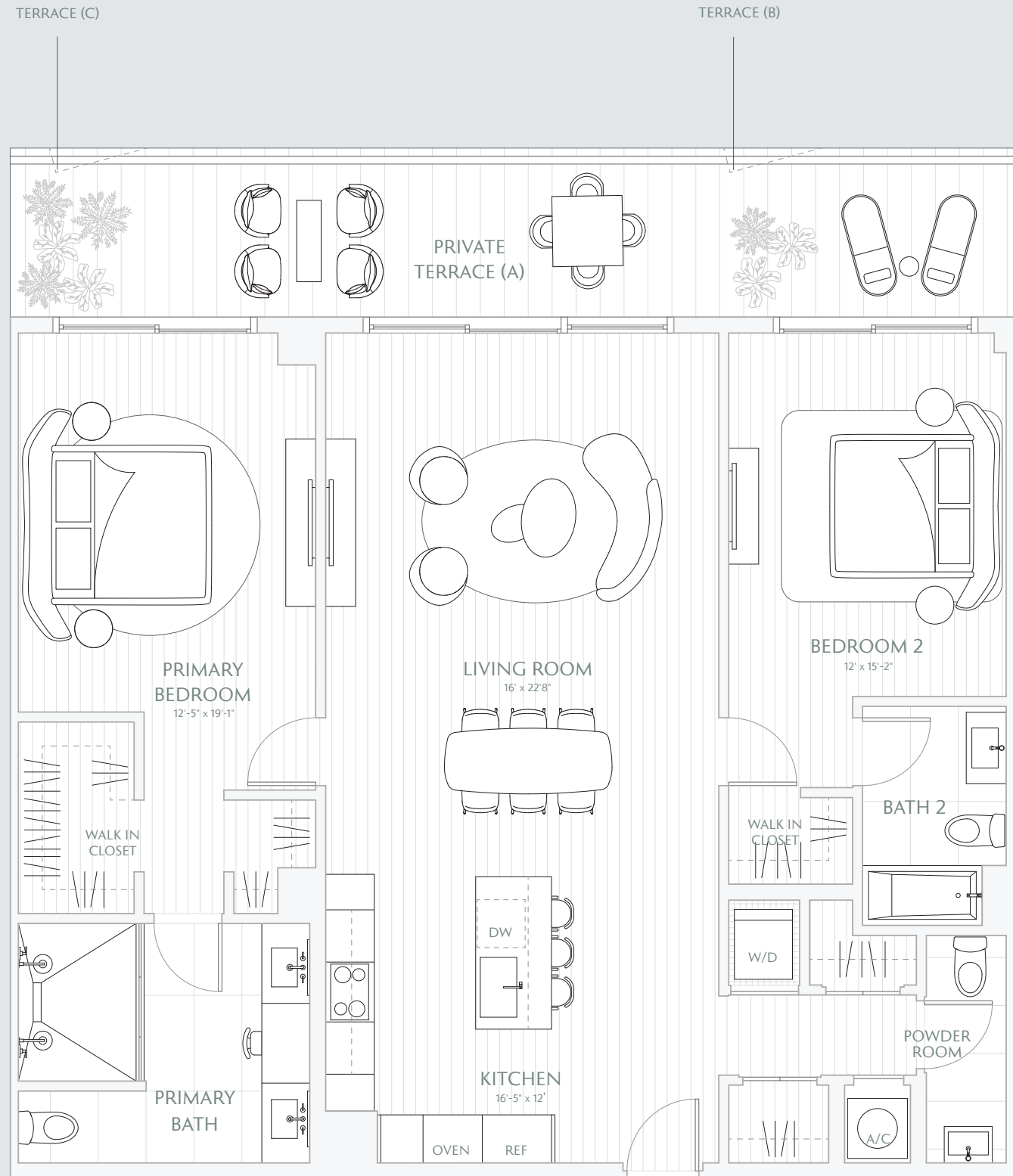
INTERIOR 1,524 SF / 141.5 M<sup>2</sup>  
EXTERIOR 300 SF / 27.8 M<sup>2</sup>  
TOTAL 1,824 SF / 169.4 M<sup>2</sup>

TERRACE A: 300 SF / 27.8 M<sup>2</sup>  
TERRACE B: 295 SF / 27.4 M<sup>2</sup>  
TERRACE C: 295 SF / 27.4 M<sup>2</sup>



Downtown Skyline  
& Water

Atlantic  
Ocean



Stated interior square footage is measured to the exterior face of exterior walls and to the centerline of interior demising walls or to the exterior face of walls adjoining corridors or other common elements or shared facilities without excluding areas that may be occupied by columns or other structural components. This method of measurement varies from, and is larger than, the dimensions that would be determined by using the description and the definition of the Unit set forth in the Declaration (which generally only includes the interior airspace between the perimeter walls and excludes structural components). For reference, the area of the unit, determined in accordance with the unit boundaries set forth in the Declaration is set forth in Exhibit "3" to the Declaration. All dimensions are approximate and may vary with actual construction. Note that measurements of rooms set forth on this floor plan are generally taken at the greatest points of each given room (as if the room were a perfect rectangle), without regard for any cutouts or irregularities. Accordingly, the area of the actual room will typically be smaller than the product obtained by multiplying the stated length times width. All floor plans and development plans are subject to change. The Developer expressly reserves the right to make modifications, revisions, and changes it deems desirable in its sole and absolute discretion. All depictions of furnishings, appliances, built-ins, counters, soffits, floor coverings, lighting, landscaping and other matters of detail, including, without limitation, items of finish and decoration, are conceptual only and are not necessarily included in each Unit. Consult your prospectus and Purchase Agreement.

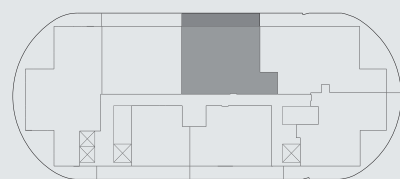
SKY  
RESIDENCE  
**03**

FLOORS 24 - 30

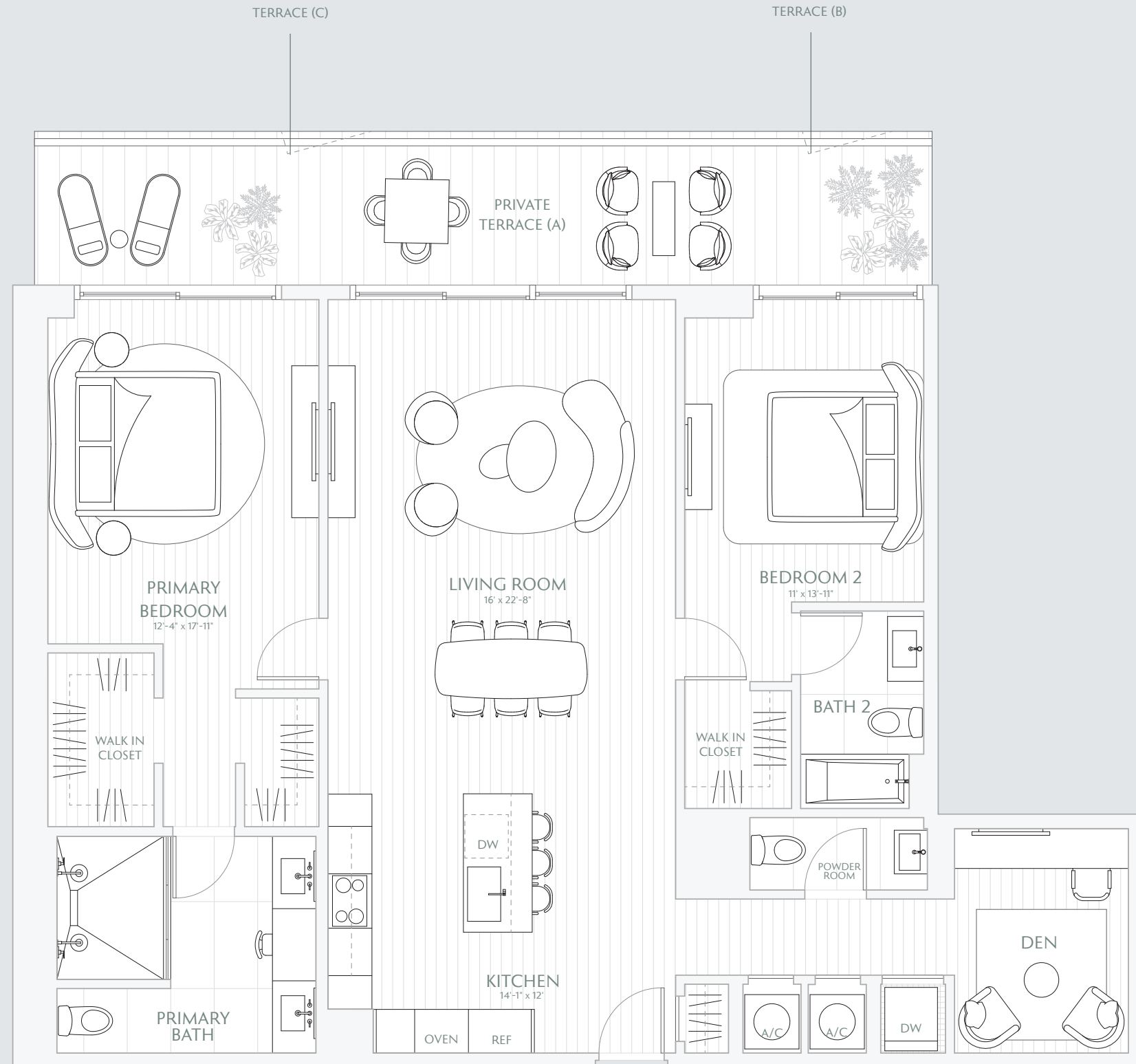
2 BEDROOMS  
DEN  
2.5 BATHS  
PRIVATE TERRACE

INTERIOR 1,600 SF / 148.6 M<sup>2</sup>  
EXTERIOR 298 SF / 27.6 M<sup>2</sup>  
TOTAL 1,898 SF / 176.3 M<sup>2</sup>

TERRACE A: 298 SF / 27.6 M<sup>2</sup>  
TERRACE B: 286 SF / 26.5 M<sup>2</sup>  
TERRACE C: 286 SF / 26.5 M<sup>2</sup>



Downtown Skyline  
& Water



Stated interior square footage is measured to the exterior face of exterior walls and to the centerline of interior demising walls or to the exterior face of walls adjoining corridors or other common elements or shared facilities without excluding areas that may be occupied by columns or other structural components. This method of measurement varies from, and is larger than, the dimensions that would be determined by using the description and the definition of the Unit set forth in the Declaration (which generally only includes the interior airspace between the perimeter walls and excludes structural components). For reference, the area of the unit, determined in accordance with the unit boundaries set forth in the Declaration is set forth in Exhibit "3" to the Declaration. All dimensions are approximate and may vary with actual construction. Note that measurements of rooms set forth on this floor plan are generally taken at the greatest points of each given room (as if the room were a perfect rectangle), without regard for any cutouts or irregularities. Accordingly, the area of the actual room will typically be smaller than the product obtained by multiplying the stated length times width. All floor plans and development plans are subject to change. The Developer expressly reserves the right to make modifications, revisions, and changes it deems desirable in its sole and absolute discretion. All depictions of furnishings, appliances, built-ins, counters, soffits, floor coverings, lighting, landscaping and other matters of detail, including, without limitation, items of finish and decoration, are conceptual only and are not necessarily included in each Unit. Consult your prospectus and Purchase Agreement.

SKY  
RESIDENCE

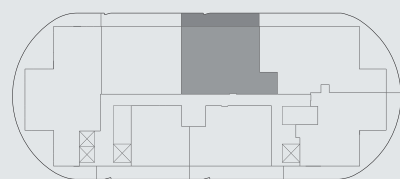
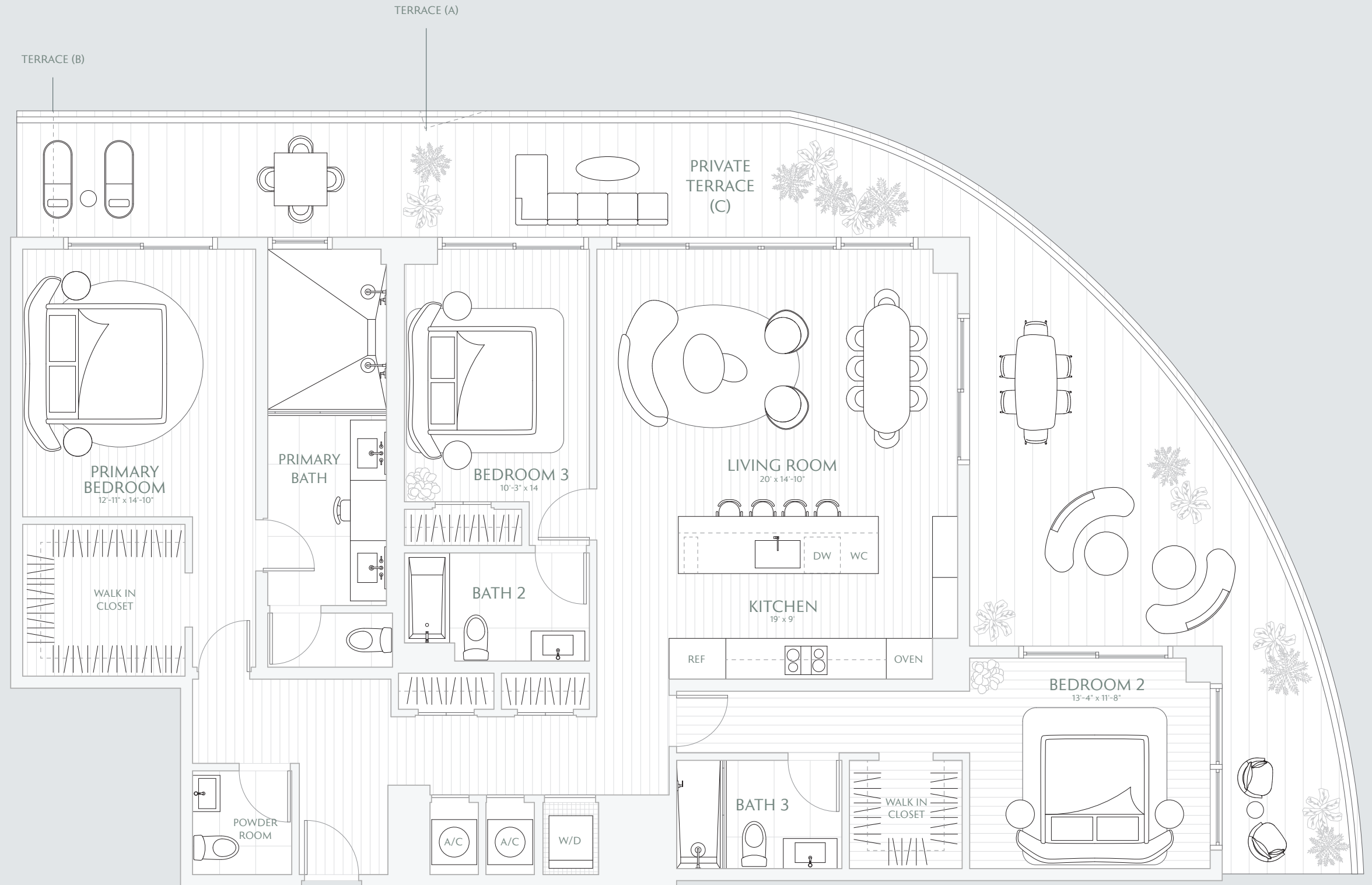
# 04

FLOORS 24 - 30

3 BEDROOMS  
3.5 BATHS  
PRIVATE TERRACE

INTERIOR 1,958 SF / 181.9 M<sup>2</sup>  
EXTERIOR 755 SF / 70.1 M<sup>2</sup>  
TOTAL 2,713 SF / 252 M<sup>2</sup>

TERRACE A: 755 SF / 70.1 M<sup>2</sup>  
TERRACE B: 743 SF / 69 M<sup>2</sup>  
TERRACE C: 758 SF / 70.4 M<sup>2</sup>



Downtown Skyline  
& Water

Stated interior square footage is measured to the exterior face of exterior walls and to the centerline of interior demising walls or to the exterior face of walls adjoining corridors or other common elements without excluding areas that may be occupied by columns or other structural components. This method of measurement varies from, and is larger than, the dimensions that would be determined by using the description and the definition of the Unit set forth in the Declaration (which generally only includes the interior airspace between the perimeter walls and excludes structural components). For reference, the area of the unit, determined in accordance with the unit boundaries set forth in the Declaration is set forth in Exhibit "3" to the Declaration. All dimensions are approximate and may vary with actual construction. Note that measurements of rooms set forth on this floor plan are generally taken at the greatest points of each given room (as if the room were a perfect rectangle), without regard for any cutouts or irregularities. Accordingly, the area of the actual room will typically be smaller than the product obtained by multiplying the stated length times width. All floor plans and development plans are subject to change. The Developer expressly reserves the right to make modifications, revisions, and changes it deems desirable in its sole and absolute discretion. All depictions of furnishings, appliances, built-ins, counters, soffits, floor coverings, lighting, landscaping and other matters of detail, including, without limitation, items of finish and decoration, are conceptual only and are not necessarily included in each Unit. Consult your prospectus and Purchase Agreement.

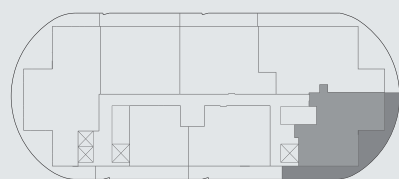
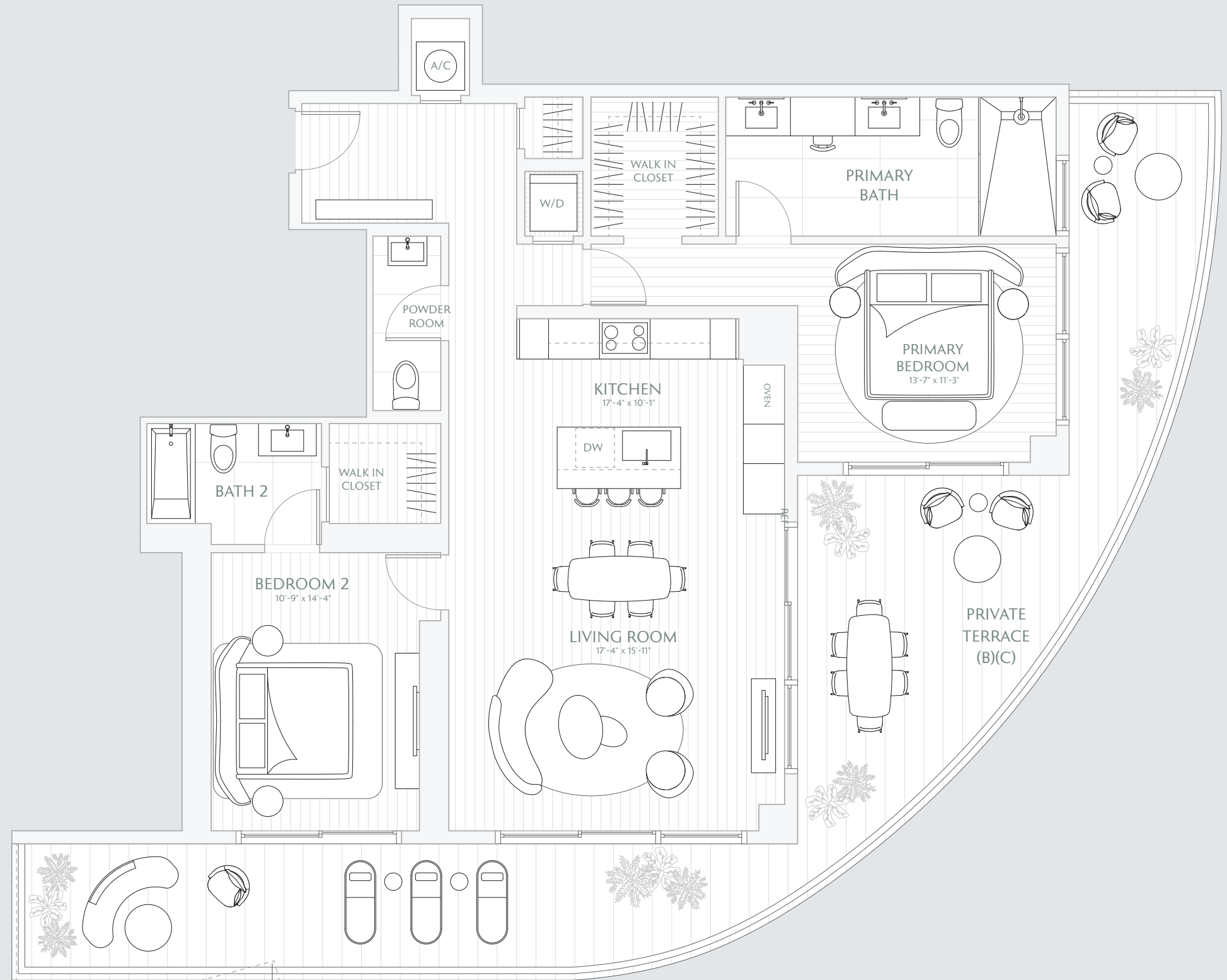
SKY  
 RESIDENCE  
**05**

FLOORS 24 - 30

2 BEDROOMS  
 2.5 BATHS  
 PRIVATE TERRACE

INTERIOR 1,370 SF / 127.2 M<sup>2</sup>  
 EXTERIOR 647 SF / 60.1 M<sup>2</sup>  
 TOTAL 2,017 SF / 187.3 M<sup>2</sup>

TERRACE A: 647 SF / 60.1 M<sup>2</sup>  
 TERRACE B: 647 SF / 60.1 M<sup>2</sup>  
 TERRACE C: 649 SF / 60.2 M<sup>2</sup>



Waterfront

Atlantic Ocean

Downtown Skyline & Water

TERRACE (A)

Stated interior square footage is measured to the exterior face of exterior walls and to the centerline of interior demising walls or to the exterior face of walls adjoining corridors or other common elements or shared facilities without excluding areas that may be occupied by columns or other structural components. This method of measurement varies from, and is larger than, the dimensions that would be determined by using the description and the definition of the Unit set forth in the Declaration (which generally only includes the interior airspace between the perimeter walls and excludes structural components). For reference, the area of the unit, determined in accordance with the unit boundaries set forth in the Declaration is set forth in Exhibit "3" to the Declaration. All dimensions are approximate and may vary with actual construction. Note that measurements of rooms set forth on this floor plan are generally taken at the greatest points of each given room (as if the room were a perfect rectangle), without regard for any cutouts or irregularities. Accordingly, the area of the actual room will typically be smaller than the product obtained by multiplying the stated length times width. All floor plans and development plans are subject to change. The Developer expressly reserves the right to make modifications, revisions, and changes it deems desirable in its sole and absolute discretion. All depictions of furnishings, appliances, built-ins, counters, soffits, floor coverings, lighting, landscaping and other matters of detail, including, without limitation, items of finish and decoration, are conceptual only and are not necessarily included in each Unit. Consult your prospectus and Purchase Agreement.

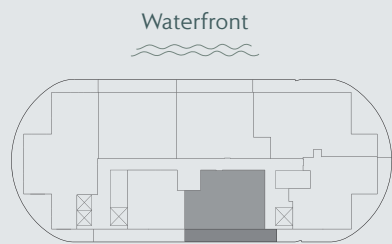
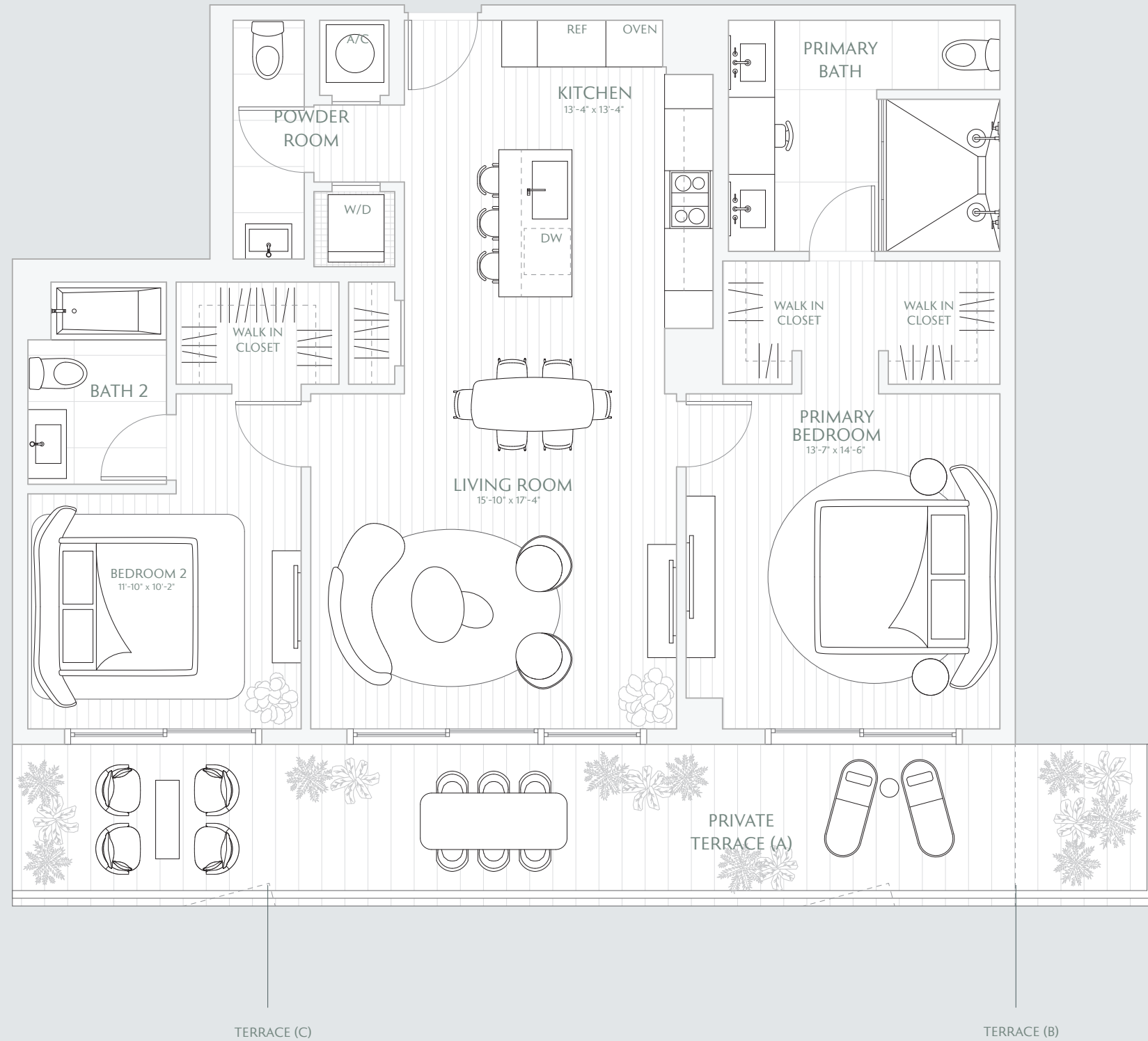
SKY  
RESIDENCE  
**06**

FLOORS 24 - 30

2 BEDROOMS  
2.5 BATHS  
PRIVATE TERRACE

INTERIOR 1,275 SF / 118.4 M<sup>2</sup>  
EXTERIOR 343 SF / 31.8 M<sup>2</sup>  
TOTAL 1,613 SF / 149.8 M<sup>2</sup>

TERRACE A: 343 SF / 31.8 M<sup>2</sup>  
TERRACE B: 296 SF / 26.5 M<sup>2</sup>  
TERRACE C: 341 SF / 31.6 M<sup>2</sup>



Downtown Skyline  
& Water

Stated interior square footage is measured to the exterior face of exterior walls and to the centerline of interior demising walls or to the exterior face of walls adjoining corridors or other common elements or shared facilities without excluding areas that may be occupied by columns or other structural components. This method of measurement varies from, and is larger than, the dimensions that would be determined by using the description and the definition of the Unit set forth in the Declaration (which generally only includes the interior airspace between the perimeter walls and excludes structural components). For reference, the area of the unit, determined in accordance with the unit boundaries set forth in the Declaration is set forth in Exhibit "3" to the Declaration. All dimensions are approximate and may vary with actual construction. Note that measurements of rooms set forth on this floor plan are generally taken at the greatest points of each given room (as if the room were a perfect rectangle), without regard for any cutouts or irregularities. Accordingly, the area of the actual room will typically be smaller than the product obtained by multiplying the stated length times width. All floor plans and development plans are subject to change. The Developer expressly reserves the right to make modifications, revisions, and changes it deems desirable in its sole and absolute discretion. All depictions of furnishings, appliances, built-ins, counters, soffits, floor coverings, lighting, landscaping and other matters of detail, including, without limitation, items of finish and decoration, are conceptual only and are not necessarily included in each Unit. Consult your prospectus and Purchase Agreement.

TOWER  
RESIDENCE

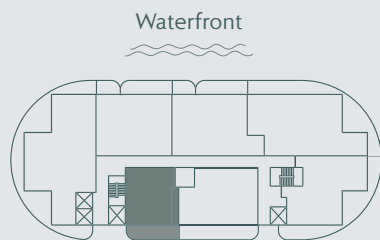
# 07

FLOORS 24 - 30

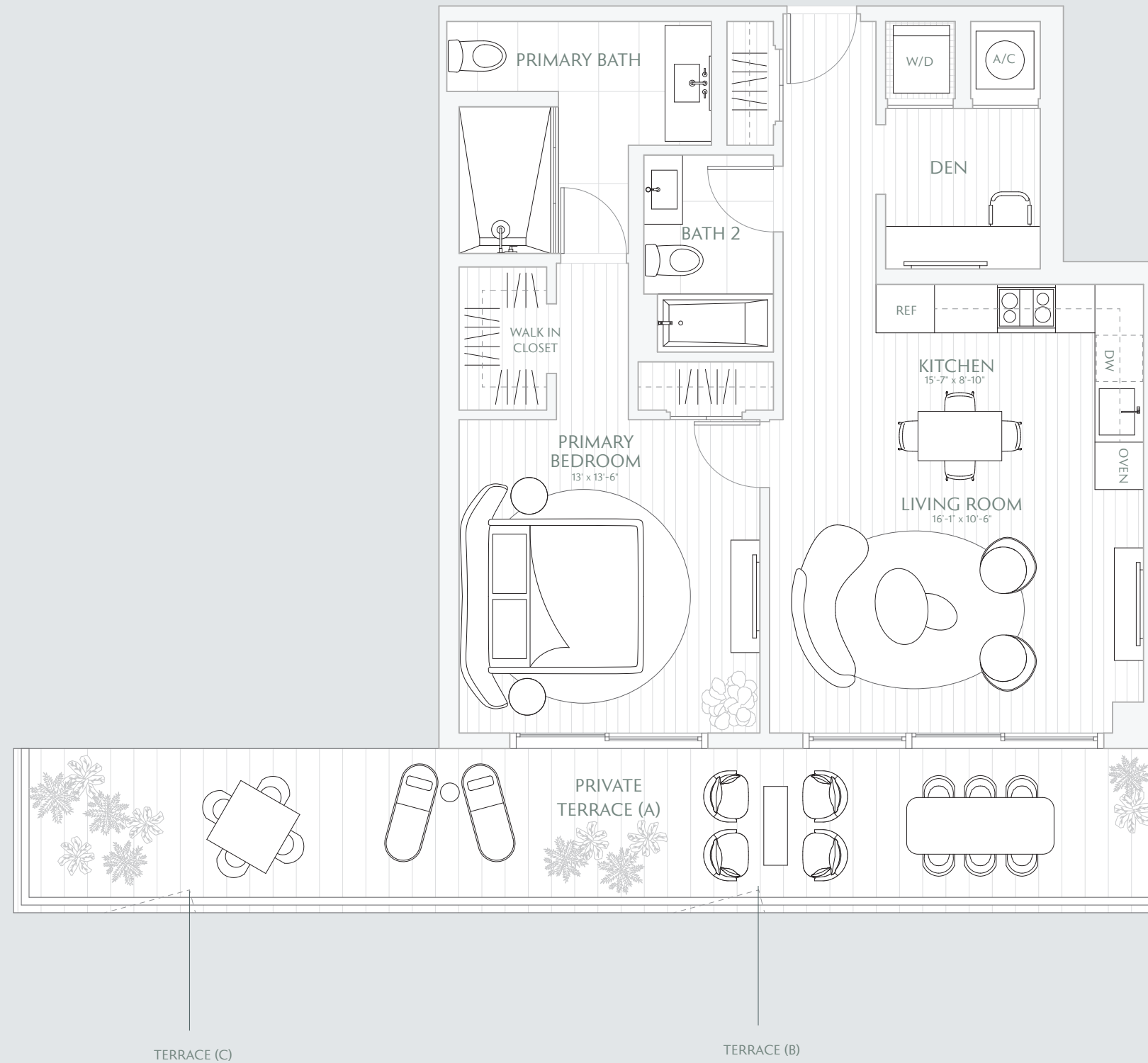
- 1 BEDROOM
- DEN
- 2 BATHS
- PRIVATE TERRACE

INTERIOR 915 SF / 85 M<sup>2</sup>  
EXTERIOR 345 SF / 32 M<sup>2</sup>  
TOTAL 1,260 SF / 117 M<sup>2</sup>

TERRACE A: 345 SF / 32 M<sup>2</sup>  
TERRACE B: 345 SF / 32 M<sup>2</sup>  
TERRACE C: 345 SF / 32 M<sup>2</sup>



Downtown Skyline  
& Water



Stated interior square footage is measured to the exterior face of exterior walls and to the centerline of interior demising walls or to the exterior face of walls adjoining corridors or other common elements or shared facilities without excluding areas that may be occupied by columns or other structural components. This method of measurement varies from, and is larger than, the dimensions that would be determined by using the description and the definition of the Unit set forth in the Declaration (which generally only includes the interior airspace between the perimeter walls and excludes structural components). For reference, the area of the unit, determined in accordance with the unit boundaries set forth in the Declaration is set forth in Exhibit "3" to the Declaration. All dimensions are approximate and may vary with actual construction. Note that measurements of rooms set forth on this floor plan are generally taken at the greatest points of each given room (as if the room were a perfect rectangle), without regard for any cutouts or irregularities. Accordingly, the area of the actual room will typically be smaller than the product obtained by multiplying the stated length times width. All floor plans and development plans are subject to change. The Developer expressly reserves the right to make modifications, revisions, and changes it deems desirable in its sole and absolute discretion. All depictions of furnishings, appliances, built-ins, counters, soffits, floor coverings, lighting, landscaping and other matters of detail, including, without limitation, items of finish and decoration, are conceptual only and are not necessarily included in each Unit. Consult your prospectus and Purchase Agreement.

TOWER  
RESIDENCE

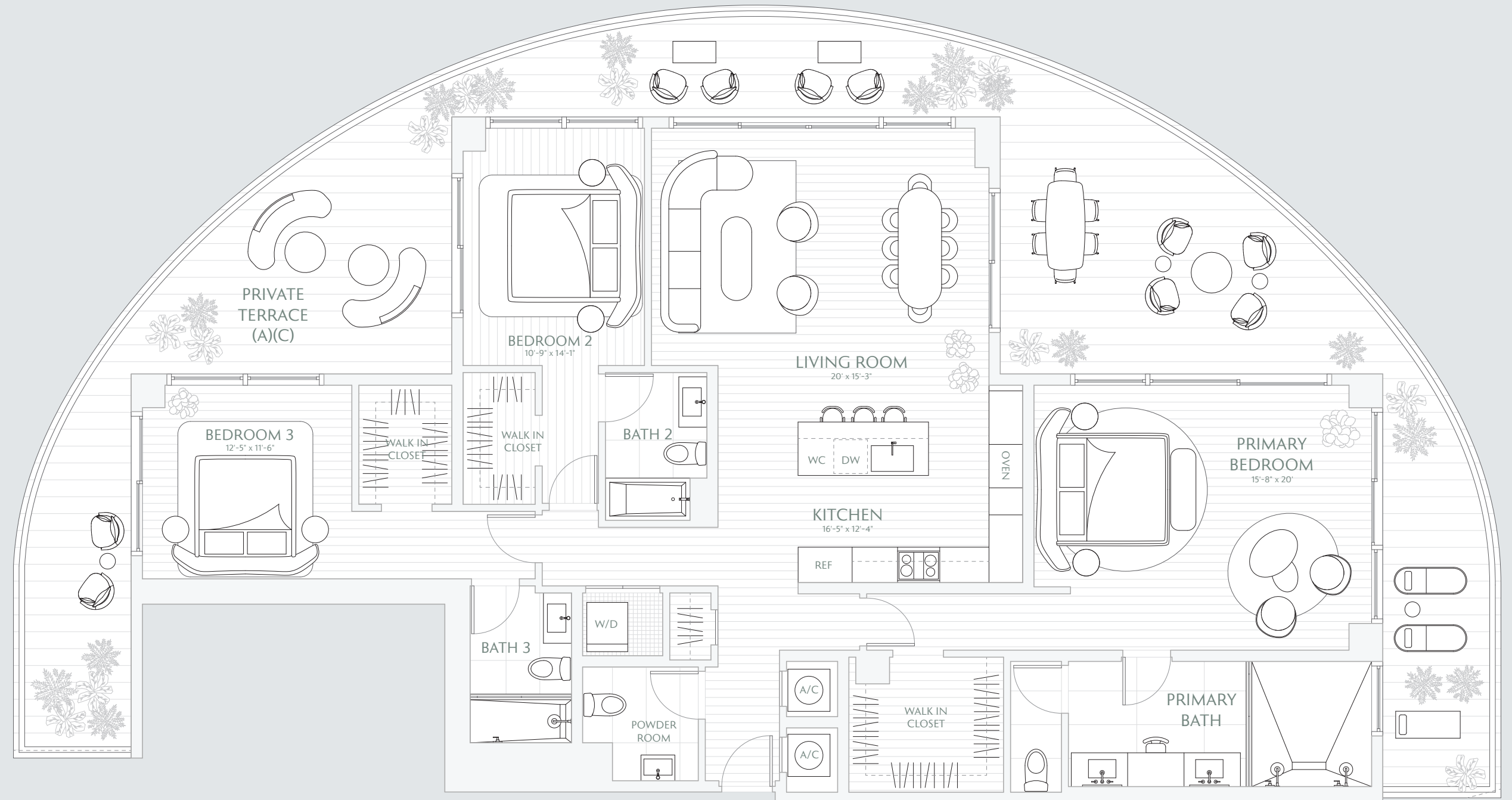
# 01

FLOORS 7 - 23

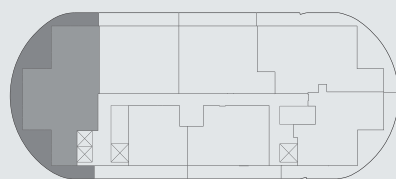
3 BEDROOMS  
3.5 BATHS  
PRIVATE TERRACE

INTERIOR 2,080 SF / 193.2 M<sup>2</sup>  
EXTERIOR 1,046 SF / 97.1 M<sup>2</sup>  
TOTAL 3,126 SF / 290.4 M<sup>2</sup>

TERRACE A: 1,046 SF / 97.1 M<sup>2</sup>  
TERRACE B: 1,044 SF / 96.9 M<sup>2</sup>  
TERRACE C: 1,047 SF / 97.2 M<sup>2</sup>



Waterfront



Atlantic Ocean

Downtown Skyline & Water



Stated interior square footage is measured to the exterior face of exterior walls and to the centerline of interior demising walls or to the exterior face of walls adjoining corridors or other common elements without excluding areas that may be occupied by columns or other structural components. This method of measurement varies from, and is larger than, the dimensions that would be determined by using the description and the definition of the Unit set forth in the Declaration (which generally only includes the interior airspace between the perimeter walls and excludes structural components). For reference, the area of the unit, determined in accordance with the unit boundaries set forth in the Declaration is set forth in Exhibit "3" to the Declaration. All dimensions are approximate and may vary with actual construction. Note that measurements of rooms set forth on this floor plan are generally taken at the greatest points of each given room (as if the room were a perfect rectangle), without regard for any cutouts or irregularities. Accordingly, the area of the actual room will typically be smaller than the product obtained by multiplying the stated length times width. All floor plans and development plans are subject to change. The Developer expressly reserves the right to make modifications, revisions, and changes it deems desirable in its sole and absolute discretion. All depictions of furnishings, appliances, built-ins, counters, soffits, floor coverings, lighting, landscaping and other matters of detail, including, without limitation, items of finish and decoration, are conceptual only and are not necessarily included in each Unit. Consult your prospectus and Purchase Agreement.



TOWER  
RESIDENCE

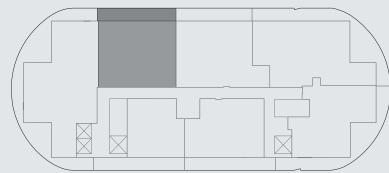
## 02

FLOORS 7 - 23

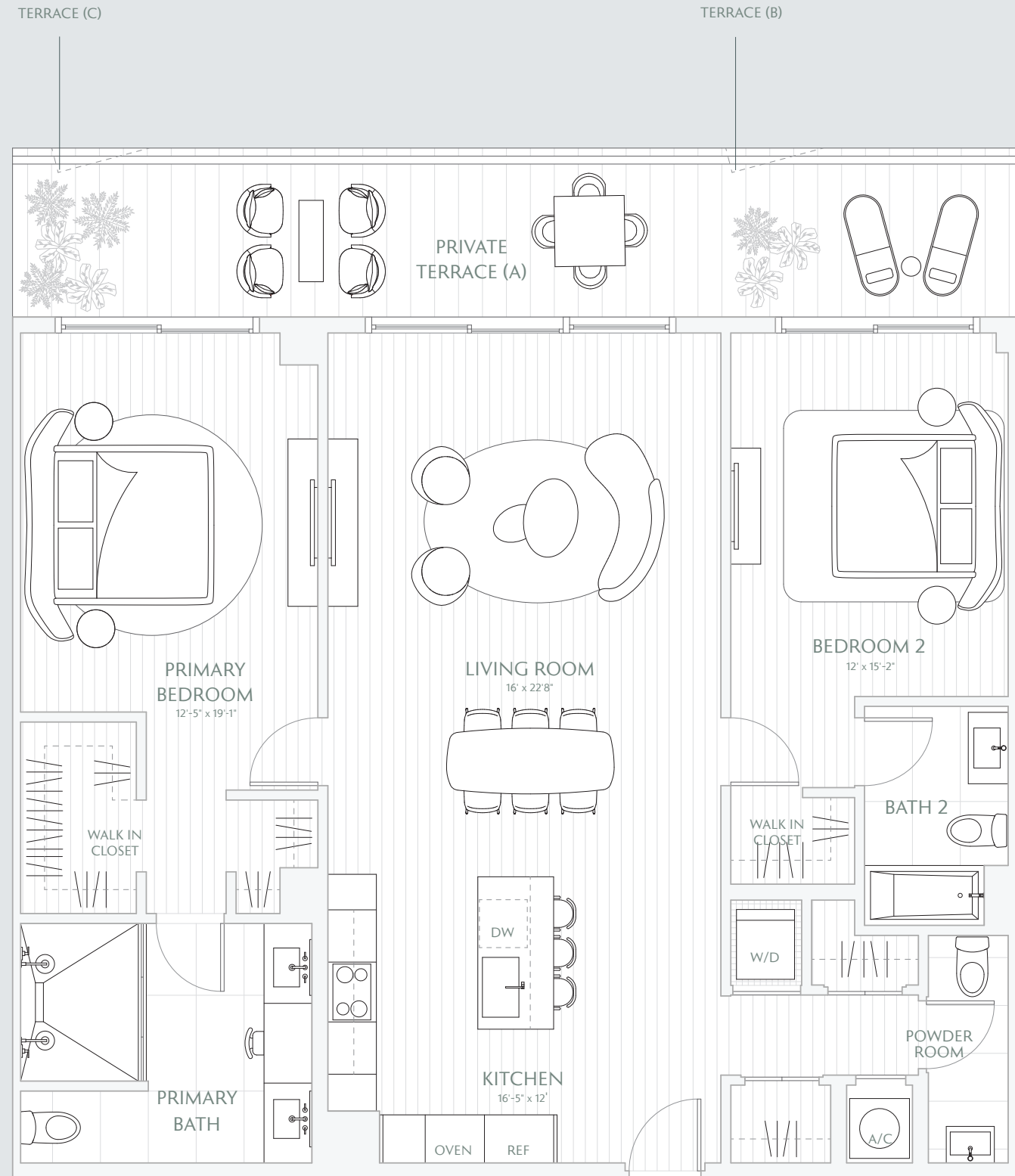
2 BEDROOMS  
2.5 BATHS  
PRIVATE TERRACES

INTERIOR 1,524 SF / 141.5 M<sup>2</sup>  
EXTERIOR 300 SF / 27.8 M<sup>2</sup>  
TOTAL 1,824 SF / 169.4 M<sup>2</sup>

TERRACE A: 300 SF / 27.8 M<sup>2</sup>  
TERRACE B: 295 SF / 27.4 M<sup>2</sup>  
TERRACE C: 295 SF / 27.4 M<sup>2</sup>



Downtown Skyline  
& Water



Stated interior square footage is measured to the exterior face of exterior walls and to the centerline of interior demising walls or to the exterior face of walls adjoining corridors or other common elements or shared facilities without excluding areas that may be occupied by columns or other structural components. This method of measurement varies from, and is larger than, the dimensions that would be determined by using the description and the definition of the Unit set forth in the Declaration (which generally only includes the interior airspace between the perimeter walls and excludes structural components). For reference, the area of the unit, determined in accordance with the unit boundaries set forth in the Declaration is set forth in Exhibit "3" to the Declaration. All dimensions are approximate and may vary with actual construction. Note that measurements of rooms set forth on this floor plan are generally taken at the greatest points of each given room (as if the room were a perfect rectangle), without regard for any cutouts or irregularities. Accordingly, the area of the actual room will typically be smaller than the product obtained by multiplying the stated length times width. All floor plans and development plans are subject to change. The Developer expressly reserves the right to make modifications, revisions, and changes it deems desirable in its sole and absolute discretion. All depictions of furnishings, appliances, built-ins, counters, soffits, floor coverings, lighting, landscaping and other matters of detail, including, without limitation, items of finish and decoration, are conceptual only and are not necessarily included in each Unit. Consult your prospectus and Purchase Agreement.

TOWER  
RESIDENCE

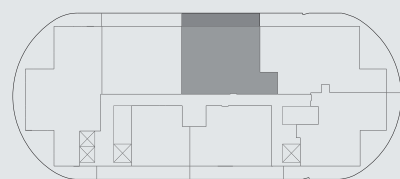
## 03

FLOORS 7 - 23

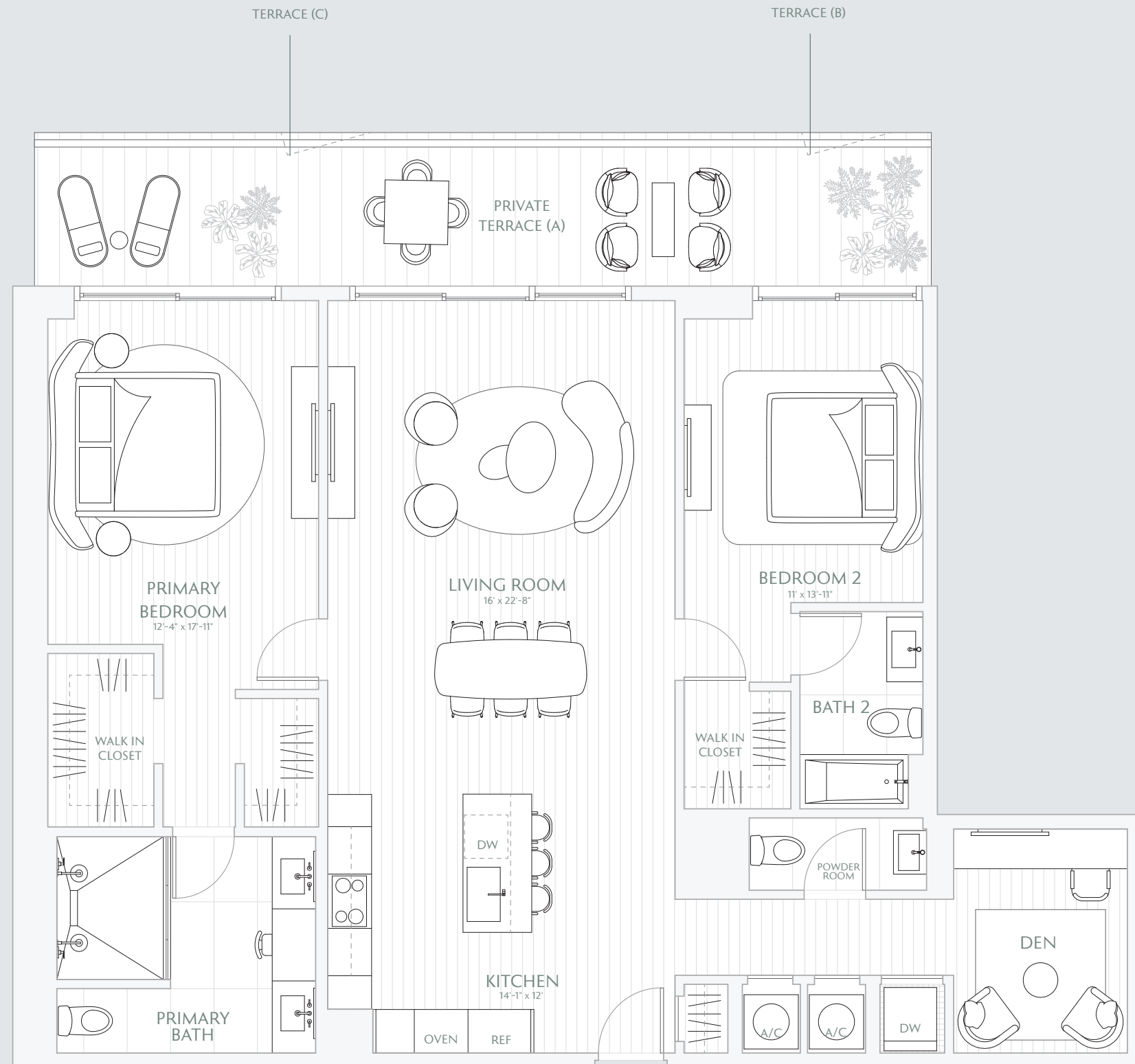
2 BEDROOMS  
DEN  
2.5 BATHS  
PRIVATE TERRACE

INTERIOR 1,600 SF / 148.6 M<sup>2</sup>  
EXTERIOR 298 SF / 27.6 M<sup>2</sup>  
TOTAL 1,898 SF / 176.3 M<sup>2</sup>

TERRACE A: 298 SF / 27.6 M<sup>2</sup>  
TERRACE B: 286 SF / 26.5 M<sup>2</sup>  
TERRACE C: 286 SF / 26.5 M<sup>2</sup>



Downtown Skyline  
& Water



Stated interior square footage is measured to the exterior face of exterior walls and to the centerline of interior demising walls or to the exterior face of walls adjoining corridors or other common elements or shared facilities without excluding areas that may be occupied by columns or other structural components. This method of measurement varies from, and is larger than, the dimensions that would be determined by using the description and the definition of the Unit set forth in the Declaration (which generally only includes the interior airspace between the perimeter walls and excludes structural components). For reference, the area of the unit, determined in accordance with the unit boundaries set forth in the Declaration is set forth in Exhibit "3" to the Declaration. All dimensions are approximate and may vary with actual construction. Note that measurements of rooms set forth on this floor plan are generally taken at the greatest points of each given room (as if the room were a perfect rectangle), without regard for any cutouts or irregularities. Accordingly, the area of the actual room will typically be smaller than the product obtained by multiplying the stated length times width. All floor plans and development plans are subject to change. The Developer expressly reserves the right to make modifications, revisions, and changes it deems desirable in its sole and absolute discretion. All depictions of furnishings, appliances, built-ins, counters, soffits, floor coverings, lighting, landscaping and other matters of detail, including, without limitation, items of finish and decoration, are conceptual only and are not necessarily included in each Unit. Consult your prospectus and Purchase Agreement.

# CONTINUUM

CLUB & RESIDENCES  
NORTH BAY VILLAGE • MIAMI

TOWER  
RESIDENCE

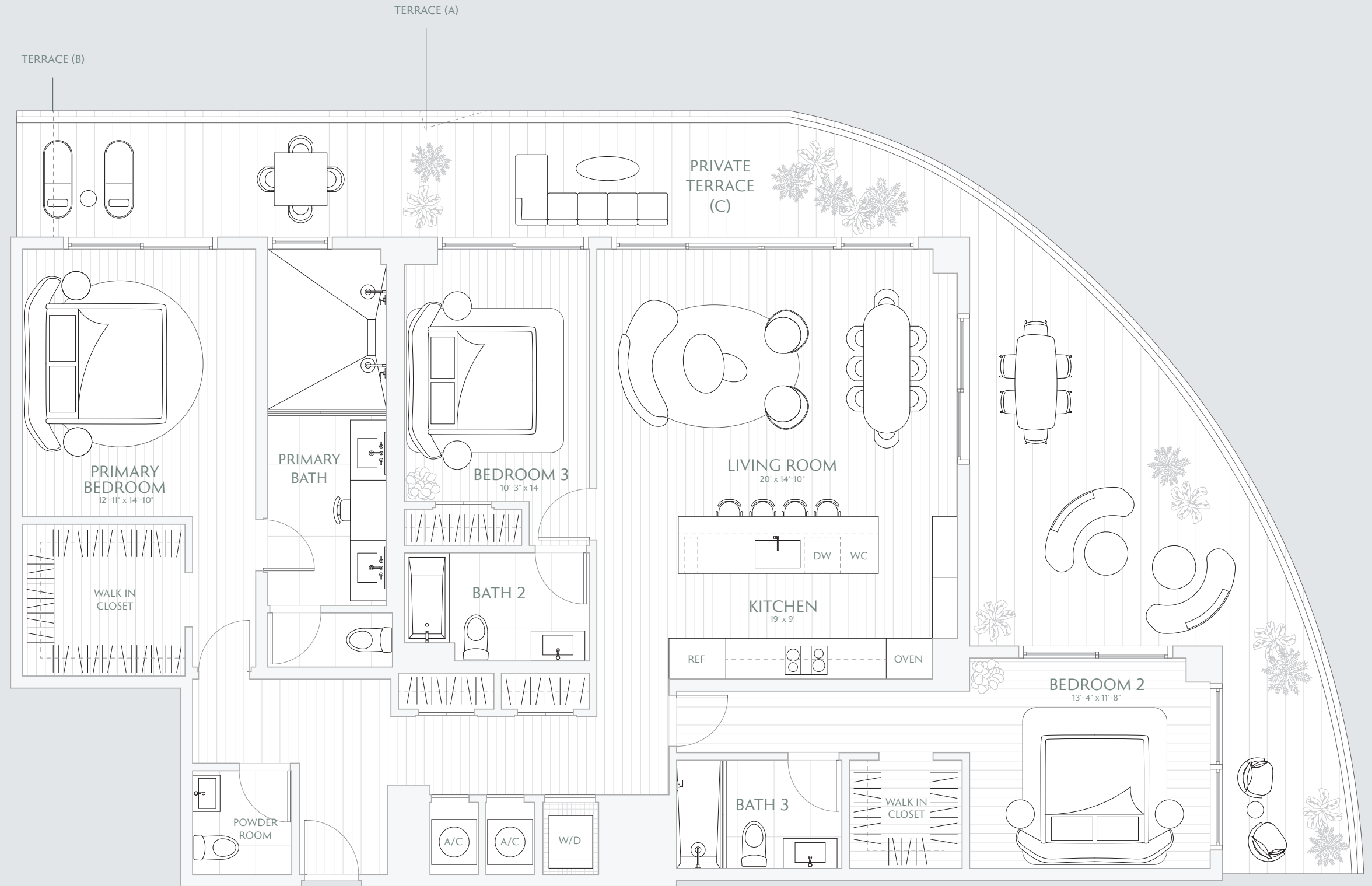
# 04

FLOORS 7 - 23

3 BEDROOMS  
3.5 BATHS  
PRIVATE TERRACE

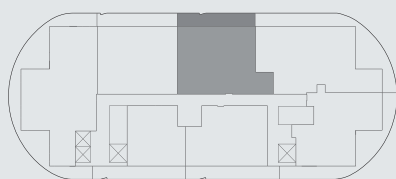
INTERIOR 1,958 SF / 181.9 M<sup>2</sup>  
EXTERIOR 755 SF / 70.1 M<sup>2</sup>  
TOTAL 2,713 SF / 252 M<sup>2</sup>

TERRACE A: 755 SF / 70.1 M<sup>2</sup>  
TERRACE B: 743 SF / 69 M<sup>2</sup>  
TERRACE C: 758 SF / 70.4 M<sup>2</sup>



Waterfront

Sunset  
& City



Atlantic  
Ocean

Downtown Skyline  
& Water

Stated interior square footage is measured to the exterior face of exterior walls and to the centerline of interior demising walls or to the exterior face of walls adjoining corridors or other common elements without excluding areas that may be occupied by columns or other structural components. This method of measurement varies from, and is larger than, the dimensions that would be determined by using the description and the definition of the Unit set forth in the Declaration (which generally only includes the interior airspace between the perimeter walls and excludes structural components). For reference, the area of the unit, determined in accordance with the unit boundaries set forth in the Declaration is set forth in Exhibit "3" to the Declaration. All dimensions are approximate and may vary with actual construction. Note that measurements of rooms set forth on this floor plan are generally taken at the greatest points of each given room (as if the room were a perfect rectangle), without regard for any cutouts or irregularities. Accordingly, the area of the actual room will typically be smaller than the product obtained by multiplying the stated length times width. All floor plans and development plans are subject to change. The Developer expressly reserves the right to make modifications, revisions, and changes it deems desirable in its sole and absolute discretion. All depictions of furnishings, appliances, built-ins, counters, soffits, floor coverings, lighting, landscaping and other matters of detail, including, without limitation, items of finish and decoration, are conceptual only and are not necessarily included in each Unit. Consult your prospectus and Purchase Agreement.

TOWER  
RESIDENCE

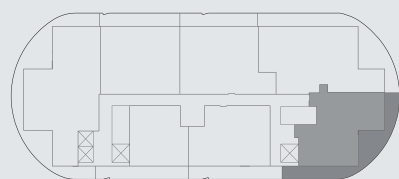
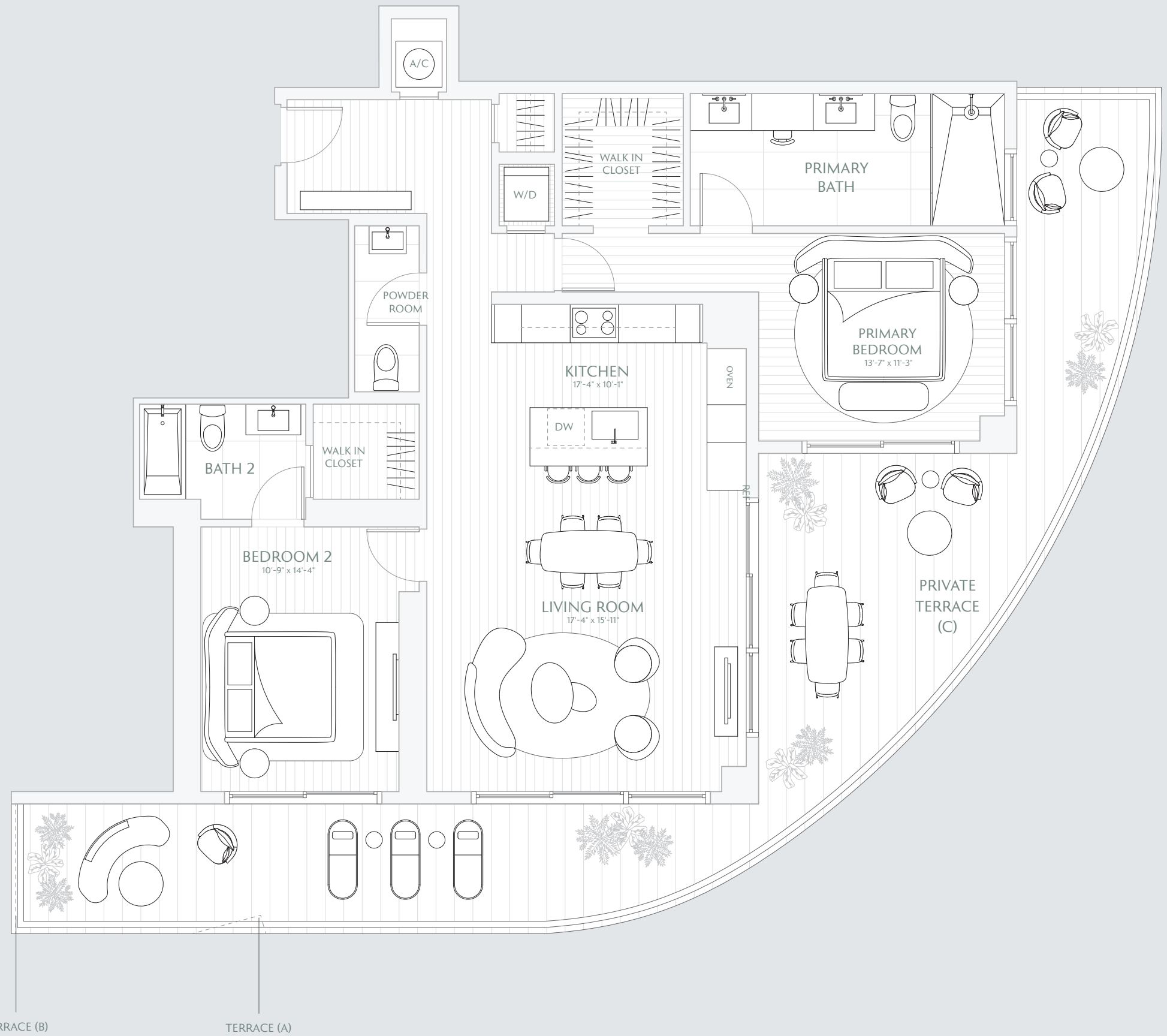
## 05

FLOORS 7 - 23

2 BEDROOMS  
2.5 BATHS  
PRIVATE TERRACE

INTERIOR 1,370 SF / 127.2 M<sup>2</sup>  
EXTERIOR 649 SF / 60.2 M<sup>2</sup>  
TOTAL 2,019 SF / 187.5 M<sup>2</sup>

TERRACE A: 647 SF / 60.1 M<sup>2</sup>  
TERRACE B: 647 SF / 60.1 M<sup>2</sup>  
TERRACE C: 649 SF / 60.2 M<sup>2</sup>



Stated interior square footage is measured to the exterior face of exterior walls and to the centerline of interior demising walls or to the exterior face of walls adjoining corridors or other common elements or shared facilities without excluding areas that may be occupied by columns or other structural components. This method of measurement varies from, and is larger than, the dimensions that would be determined by using the description and the definition of the Unit set forth in the Declaration (which generally only includes the interior airspace between the perimeter walls and excludes structural components). For reference, the area of the unit, determined in accordance with the unit boundaries set forth in the Declaration is set forth in Exhibit "3" to the Declaration. All dimensions are approximate and may vary with actual construction. Note that measurements of rooms set forth on this floor plan are generally taken at the greatest points of each given room (as if the room were a perfect rectangle), without regard for any cutouts or irregularities. Accordingly, the area of the actual room will typically be smaller than the product obtained by multiplying the stated length times width. All floor plans and development plans are subject to change. The Developer expressly reserves the right to make modifications, revisions, and changes it deems desirable in its sole and absolute discretion. All depictions of furnishings, appliances, built-ins, counters, soffits, floor coverings, lighting, landscaping and other matters of detail, including, without limitation, items of finish and decoration, are conceptual only and are not necessarily included in each Unit. Consult your prospectus and Purchase Agreement.

TOWER  
RESIDENCE

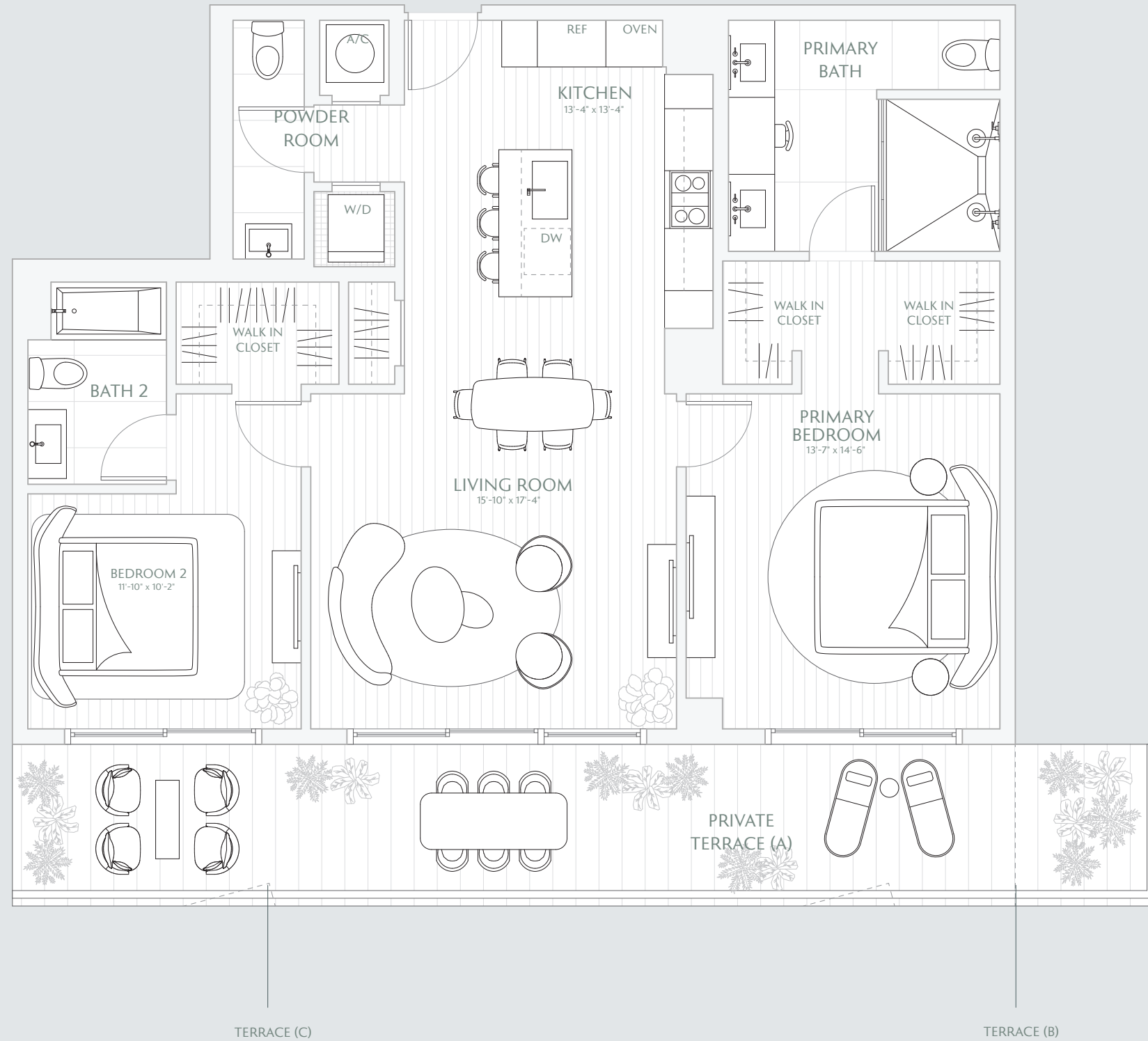
## 06

FLOORS 7 - 23

2 BEDROOMS  
2.5 BATHS  
PRIVATE TERRACE

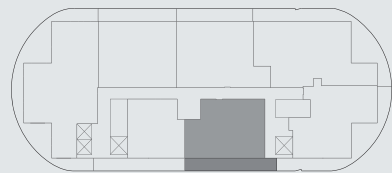
INTERIOR 1,275 SF / 118.4 M<sup>2</sup>  
EXTERIOR 343 SF / 31.8 M<sup>2</sup>  
TOTAL 1,613 SF / 149.8 M<sup>2</sup>

TERRACE A: 343 SF / 31.8 M<sup>2</sup>  
TERRACE B: 296 SF / 26.5 M<sup>2</sup>  
TERRACE C: 341 SF / 31.6 M<sup>2</sup>



Waterfront

Sunset  
& City



Atlantic  
Ocean

Downtown Skyline  
& Water

Stated interior square footage is measured to the exterior face of exterior walls and to the centerline of interior demising walls or to the exterior face of walls adjoining corridors or other common elements or shared facilities without excluding areas that may be occupied by columns or other structural components. This method of measurement varies from, and is larger than, the dimensions that would be determined by using the description and the definition of the Unit set forth in the Declaration (which generally only includes the interior airspace between the perimeter walls and excludes structural components). For reference, the area of the unit, determined in accordance with the unit boundaries set forth in the Declaration is set forth in Exhibit "3" to the Declaration. All dimensions are approximate and may vary with actual construction. Note that measurements of rooms set forth on this floor plan are generally taken at the greatest points of each given room (as if the room were a perfect rectangle), without regard for any cutouts or irregularities. Accordingly, the area of the actual room will typically be smaller than the product obtained by multiplying the stated length times width. All floor plans and development plans are subject to change. The Developer expressly reserves the right to make modifications, revisions, and changes it deems desirable in its sole and absolute discretion. All depictions of furnishings, appliances, built-ins, counters, soffits, floor coverings, lighting, landscaping and other matters of detail, including, without limitation, items of finish and decoration, are conceptual only and are not necessarily included in each Unit. Consult your prospectus and Purchase Agreement.

TOWER  
RESIDENCE

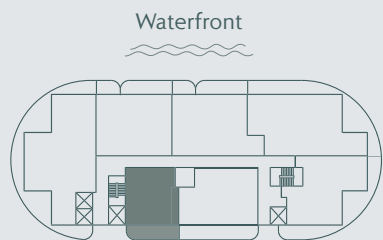
## 07

FLOORS 7 - 23

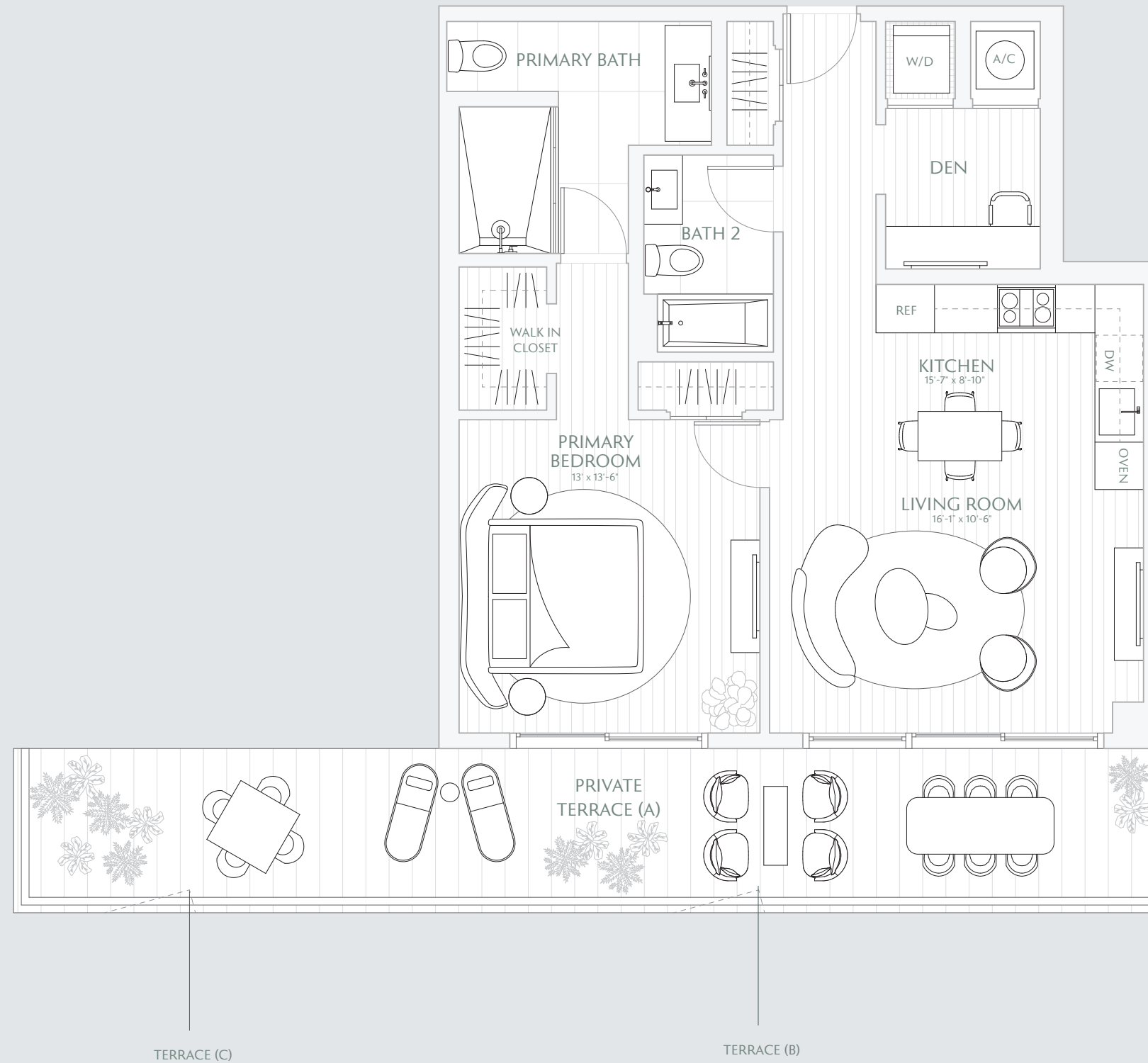
1 BEDROOM  
DEN  
2 BATHS  
PRIVATE TERRACE

INTERIOR 915 SF / 85 M<sup>2</sup>  
EXTERIOR 345 SF / 32 M<sup>2</sup>  
TOTAL 1,260 SF / 117 M<sup>2</sup>

TERRACE A: 345 SF / 32 M<sup>2</sup>  
TERRACE B: 345 SF / 32 M<sup>2</sup>  
TERRACE C: 345 SF / 32 M<sup>2</sup>



Downtown Skyline  
& Water



Stated interior square footage is measured to the exterior face of exterior walls and to the centerline of interior demising walls or to the exterior face of walls adjoining corridors or other common elements or shared facilities without excluding areas that may be occupied by columns or other structural components. This method of measurement varies from, and is larger than, the dimensions that would be determined by using the description and the definition of the Unit set forth in the Declaration (which generally only includes the interior airspace between the perimeter walls and excludes structural components). For reference, the area of the unit, determined in accordance with the unit boundaries set forth in the Declaration is set forth in Exhibit "3" to the Declaration. All dimensions are approximate and may vary with actual construction. Note that measurements of rooms set forth on this floor plan are generally taken at the greatest points of each given room (as if the room were a perfect rectangle), without regard for any cutouts or irregularities. Accordingly, the area of the actual room will typically be smaller than the product obtained by multiplying the stated length times width. All floor plans and development plans are subject to change. The Developer expressly reserves the right to make modifications, revisions, and changes it deems desirable in its sole and absolute discretion. All depictions of furnishings, appliances, built-ins, counters, soffits, floor coverings, lighting, landscaping and other matters of detail, including, without limitation, items of finish and decoration, are conceptual only and are not necessarily included in each Unit. Consult your prospectus and Purchase Agreement.