

JEM

MIAMI WORLD CENTER

JEM

MIAMI WORLD CENTER



THE JEWEL OF MIAMI

An architectural masterpiece, JEM will transform the skyline while introducing an incomparable living experience to Miami. The building's sophistication, integrity, level of service, and variety of curated spaces — from the private porte-cochère to the exclusive JEM Club — are unsurpassed.

Its exclusive collection of residences, each meticulously designed, offers commanding vistas that exalt light and expansiveness. JEM's address within Miami Worldcenter establishes the neighborhood as an international focal point worthy of its prodigious name.



ARTIST CONCEPTUAL RENDERING. DEVELOPER MAY CHANGE WITHOUT NOTICE.

THE NEIGHBORHOOD



MIAMI
WORLD CENTER



Miami Worldcenter's lifestyle-driven "high-street" retail component is the centerpiece of the development's 27-acre master plan. An open-air shopping promenade runs North and South from Northeast 10th Street to Northeast 7th Street and between Northeast 1st and 2nd Avenues. A large public plaza will be surrounded by shops and restaurants, creating a central gathering place and outdoor event space.

300,000 SF

COMPLETED RETAIL CONSTRUCTION

139,000 SF

OF SIGNED RETAIL LEASES

130,000 SF

RETAIL CONSTRUCTION NEARING COMPLETION



RETAIL

- LULULEMON*
- RAYBAN*
- SEPHORA*
- POSMAN BOOKS
- SAVAGE X FENTY
- LULI FAMA

ESSENTIALS & ENTERTAINMENT

- LUCID MOTORS*
- BOWLERO
- CLUB STUDIO
- MUSEUM OF ICE CREAM
- SPORTS & SOCIAL
- THE CONTAINER STORE
- LUCKY STRIKE*
- VIBEFACORY
- EL VECINO CIGARS & COCKTAILS*

DINING

- STARBUCKS
- LAUREL BRASSERIE*
- MAPLE & ASH
- SIXTY VINES
- SERAFINA
- EARL'S KITCHEN & BAR
- VILLA ONE TEQUILA GARDENS
- EARL'S KITCHEN & BAR
- JUVIA RESTAURANT
- SWEET PARIS CRÊPERIE & CAFÉ
- ANTHONY'S COAL FIRE PIZZA
- BURGERFI

* CURRENTLY OPEN



MIAMI WORLD CENTER

SPORTS & SOCIAL



SEPHORA



LAUREL BRASSERIE



LULULEMON



LUCID MOTORS

SAVAGE FENTY



THE NEW DOWNTOWN

WORLD PROMENADE

Regional fashion retailers anchored by regional and local high-end restaurants.

7TH ST. PROMENADE

Daily Necessities: hair salon, nail bar, coffee shops, ice cream shops, banks, and corner restaurant

WORLD SQUARE

The heart of Miami Worldcenter used for community gatherings, open markets and concerts.

ENTERTAINMENT HUB

90,000 SF world class entertainment including a food hall, experience oriented activities and a Citizen M Hotel.

WITKOFF MIXED-USE PROJECT

600,000 SF of convention space
1,800 luxury hotel rooms.

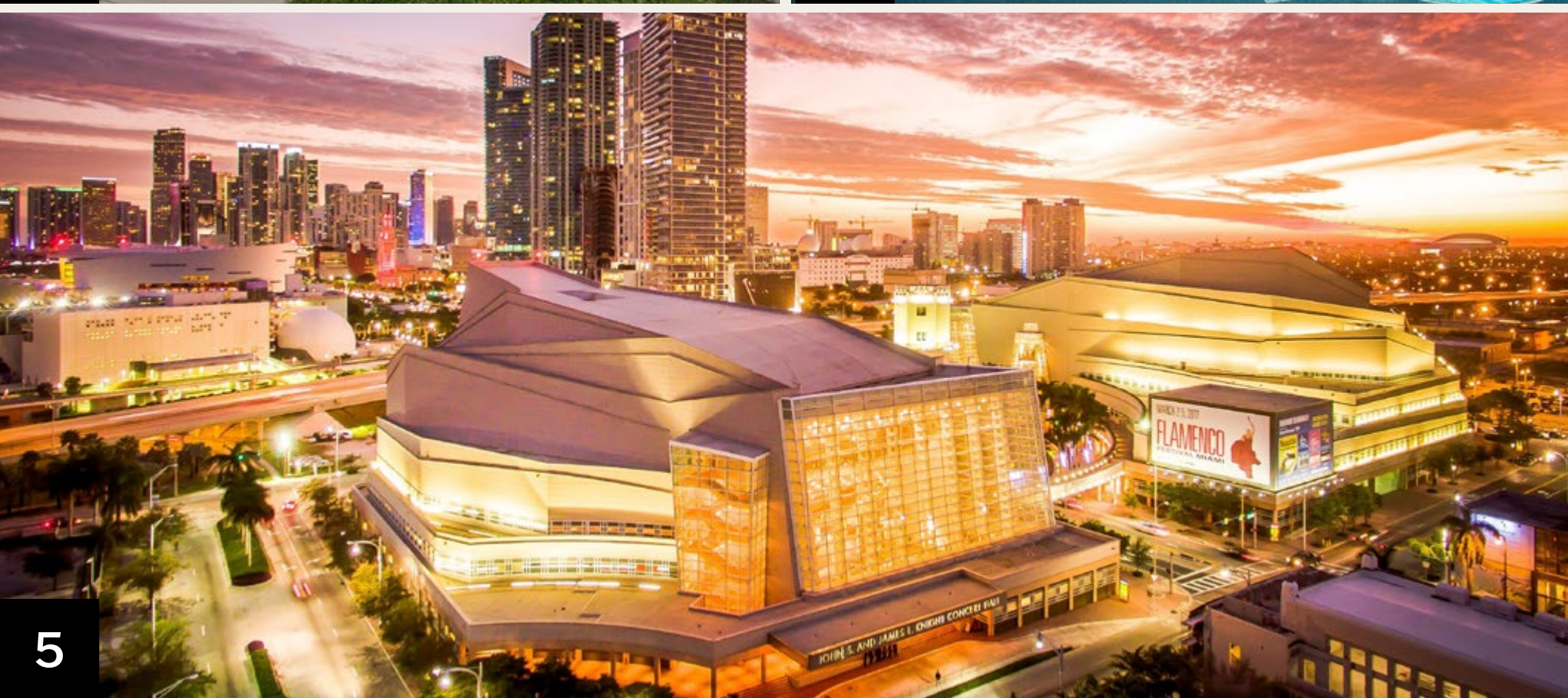
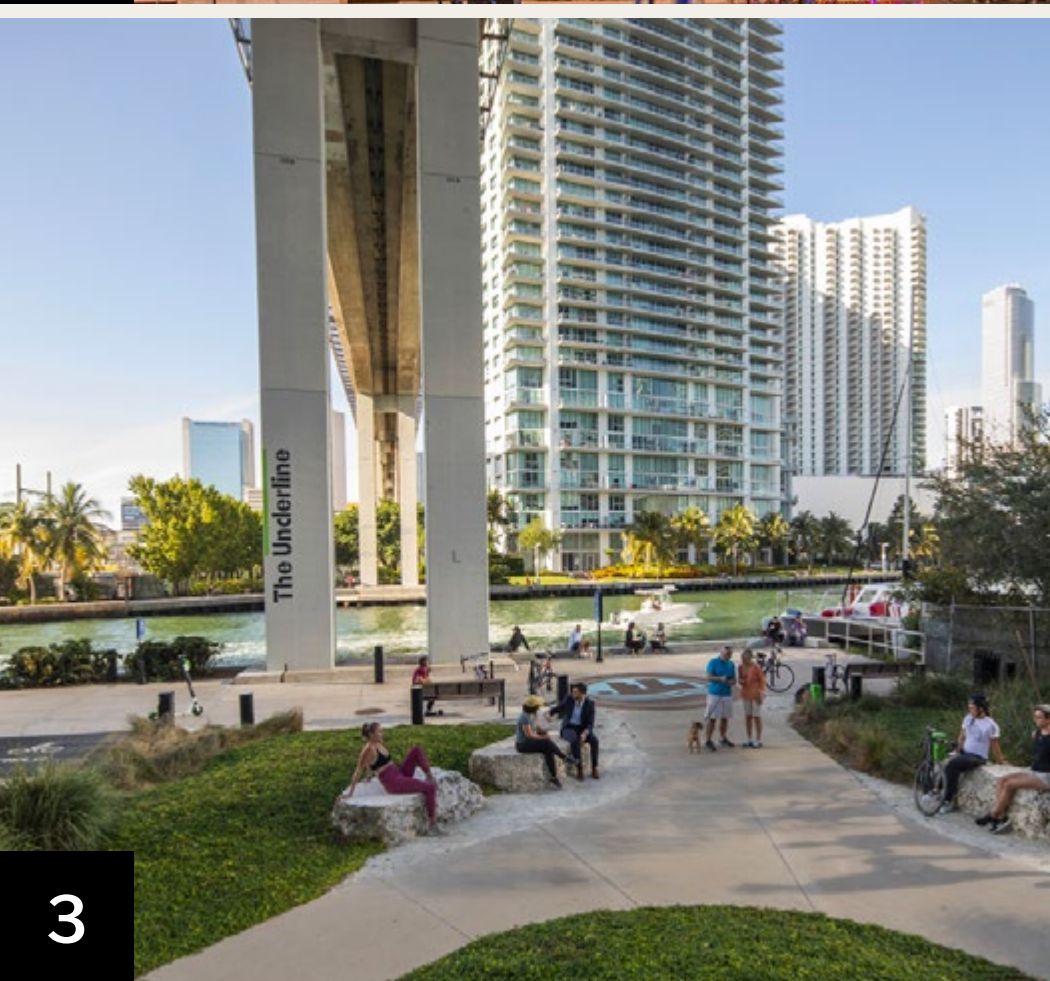
LEGACY HOTEL & RESIDENCES

Luxury hotel and residential tower featuring 310 branded residences sitting above a 219 room hotel.

BLUE ZONES CENTER

The first-of-its-kind 160,000 square-foot health and well-being center.





ARTS & CULTURE

1. PEREZ ART MUSEUM MIAMI

Breathtaking views of Biscayne Bay and the glittering Miami skyline around, it is a gorgeous undulating green expanse of 30 acres. The park is home to the Phillip and Patricia Frost Museum of Science and its waterfront treasure - Perez Art Museum Miami.

+300K ANNUAL VISITORS

2. KASEYA CENTER

The Arena, home to the Miami Heat, is 20,000 seat international, versatile venue in a vibrant waterfront setting. Located in the center of booming Downtown Miami and the Entertainment District, Kaseya Center hosts 80+ non-basketball events each year. Including A-list concerts, family shows, sporting events, National Conferences, and more.

+2M ANNUAL VISITORS

3. UNDERDECK PARK

Directly underneath the forthcoming I-395 signature bridge project, the 'Underdeck' will be a new 30-acre open space that is slated to transform the former infrastructure that divided the communities of Overtown, Downtown Miami & Edgewater. Directly underneath the forthcoming I-395 signature bridge project, the 'Underdeck' will be a new 30-acre open space.

33 ACRES

4. FROST MUSEUM OF SCIENCE

One of the only institutions worldwide boasting both a state-of-the-art planetarium and cutting-edge aquarium, the 250,000-square-foot facility sits on four acres of land overlooking Biscayne Bay surrounded by Downtown Miami's dazzling skyline.

+700K ANNUAL VISITORS

5. ADRIENNE ARSHT CENTER

The Adrienne Arsht Center, designed by world-renowned architect Cesar Pelli, is one of the most important performing arts venues, with two major single-purpose halls created to present the finest in classical and popular entertainment, from 'Hamilton' to 'Don Quixote'.

+450K ANNUAL VISITORS

THE CITY OF THE FUTURE

1. **BRIGHTLINE** - With Metrorail, Metromover & Tri-rail access, Brightline high-speed rail service is designed to connect South Florida to Central Florida while taking cars off the road and offering millions of travelers an eco-friendly way to move.

10M PROJECTED VISITORS

2. **METRORAIL** - Florida's rapid transit metro system is currently composed of two lines of 23 stations on 24.4 miles of track. Metrorail serves the urban core of Miami, connecting the urban centers of Miami International Airport, the Civic Center, Downtown Miami, and Brickell with northern developed neighborhoods.

2.5M ANNUAL RIDERS

3. **METROMOVER** - A free people mover service that operates seven days a week in the downtown Miami and Brickell area. Major destinations include the Kaseya Center, home of the Miami HEAT, Bayside Marketplace, and Miami Dade College.

3 STOPS AT MWC

4. **MIAMI BAYLINK** - With 10 Million riders annually Miami Baylink will provide greater connectivity between Downtown Miami and the City of Miami Beach attractions.

2029 EXPECTED COMPLETION

5. **MIAMI INTERNATIONAL AIRPORT**

America's 3rd busiest airport with 45 Million passengers annually.

5 MILES WEST OF MWC

6. **PORT MIAMI**

The world's leading cruise port with 10 Million projected visitors.

6.5M ANNUAL CRUISE PASSENGERS





GREEN SPACES MIAMI OASIS



Beyond JEM's extraordinary outdoor amenities, in addition to the world's best beaches, Miami boasts an abundance of parks, gardens, lawns, golf courses, tennis courts, and walking paths. The project will also create a new 33-acre park located beneath the Signature Bridge, just 1.4 miles away, running from Overtown to Biscayne Bay, called The Underdeck.



ART, CULTURE + ENTERTAINMENT

- 1 Perez Art Museum Miami
- 2 Patricia + Philip Frost Museum of Science
- 3 Kaseya Center
- 4 Adrienne Arsht Center for the Performing Arts
- 5 Skyviews Miami Observation Wheel
- 6 Museum of Ice Cream*
- 7 Bowlero*
- 8 Jungle Island
- 9 Inter Miami CF Freedom Park *(5 miles from JEM)*
- 10 Miami International Airport *(5 miles from JEM)*
- 11 Wynwood Walls *(1.5 miles from JEM)*

SHOPPING

- 12 Miami Worldcenter
- 13 Lulu Lemon
- 14 Sephora
- 15 Ray Ban
- 16 Lucid Motors
- 17 Brickell City Center
- 18 Bayside Marketplace
- 19 Miami Design District

DINING

- 20 Brasserie Laurel
- 21 El Vecino
- 22 Joia Beach
- 23 Il Gabbiano
- 24 11th Street Pizza
- 25 Verde
- 26 All day Cafe
- 27 Zuma
- 28 Niu Kitchen
- 29 Hell's Kitchen
- 30 Julia and Henry
- 31 Sports & Social*
- 32 Maple & Ash*
- 33 Etta*
- 34 Earl's Kitchen*

PARKS + LEISURE

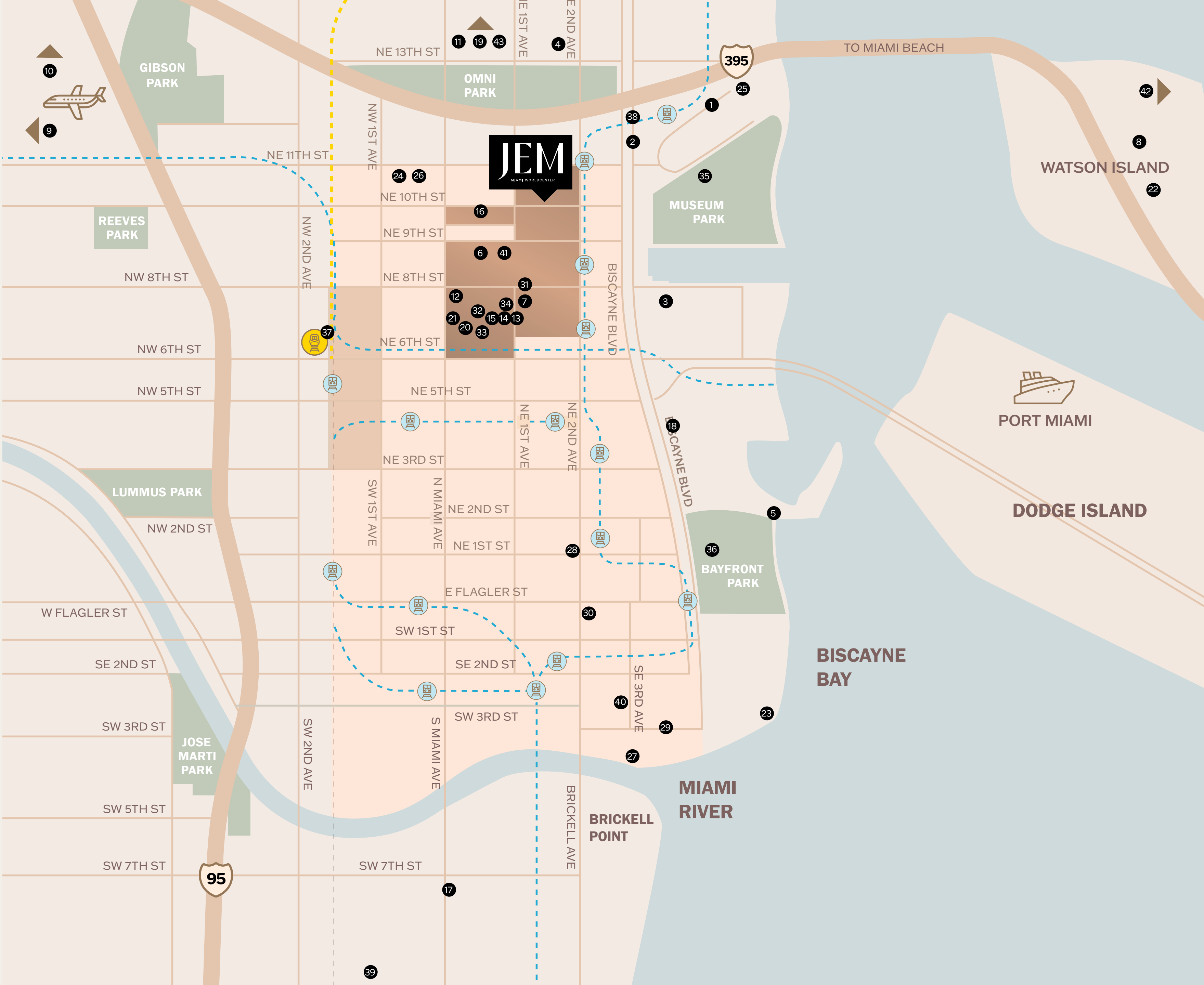
- 35 Museum Park/Maurice A Ferre Park
- 36 Bayfront Park

TRANSPORTATION

- 37 Miami Central – Brightline
- 38 Miami Metromover

ESSENTIALS

- 39 Publix
- 40 Whole Foods
- 41 Club Studio
- 42 Trader Joe's *(3.4 miles from JEM)*
- 43 Target *(2.2 miles from JEM)*



THE VISIONARY TEAM



THE PLAZA HOTEL

Naftali Group is a privately-owned global real estate development and investment firm.

Headquartered in New York City, Naftali Group is a privately owned global real estate development and investment brand known for its portfolio of the most notable residential addresses. Founded and led by Miki Naftali, a renowned visionary in the industry, the firm is highly specialized in identifying and acquiring undervalued properties in prime geographical areas with strong growth potential.

YEARS IN
BUSINESS

33+

PROJECTS
COMPLETED

40+

TOTAL
VALUE

\$15B+



200 EAST 83RD



THE SHEPARD



THE PLAZA HOTEL



THE BELLEMONT



THE BENSON



THE BENSON



200 EAST 83RD



PORTFOLIO

NEW YORK

1. 201 EAST 23RD STREET

2. 255 EAST 77TH STREET

3. 211 WEST 84TH STREET

4. 464-490 KENT AVENUE

5. THE BELLEMONT | 1165 MADISON AVE

6. 200 EAST 83RD STREET

7. THE BENSON | 1045 MADISON AVE

8. THE SHEPHARD | 275 WEST 10TH STREET

9. 221 WEST 77TH STREET

10. 210 WEST 77TH STREET

11. THE SEYMOUR | 261 WEST 25TH STREET

12. 234 EAST 23RD STREET

13. 182 WEST 82ND STREET

14. 33 BEEKMAN STREET

15. THE ARTHUR | 245 WEST 25TH STREET

16. LANDMARK PARK SLOPE
267 6TH STREET

17. THE BERGEN | 361 BERGEN STREET

18. 200 FRANKLIN STREET

19. 64, 66. 68 MASPETH AVENUE

20. 65 MASPETH AVENUE

21. 484 HUMBOLDT STREET

22. THE PLAZA HOTEL |
ONE CENTRAL PARK SOUTH

23. THE O'NEILL | 655 SIXTH AVENUE

24. 250 WEST STREET

25. THE LINK | 310 WEST 52ND STREET

26. 49 EAST 21ST STREET

27. GRAND MADISON | 225 FIFTH AVENUE

28. ONE MADISON AVENUE

29. 21 ASTOR PLACE

30. 151 WEST 27TH STREET

31. 224 WEST 18TH STREET

32. 426 WEST 58TH STREET

A major presence on the international stage, Arquitectonica has made its mark globally with projects in 59 countries on five continents.

From its inception in 1977, the firm received almost instant attention and acclaim from critics and the public alike, due to a bold modernism that was immediately identified with a renaissance in Miami's urban landscape. Led by Principals Bernardo Fort-Brescia and Laurinda Spear, Arquitectonica continues to push the limits of design with its innovative use of materials, geometry, pattern and color to introduce a new brand of humanistic modern design to the world.





Based in downtown New York with satellite offices in Los Angeles and Madrid, Rockwell Group creates extraordinary experiences and construct remarkable environments across the globe.



Rockwell Group is an interdisciplinary architecture and design firm that emphasizes invention and thought leadership in every project. Founded by David Rockwell, FAIA, the 300-person firm merges performance and architecture to create extraordinary experiences and built environments, including restaurants and hotels, cultural institutions, transportation hubs, and Broadway sets, across the globe.

From the beginning, EDSA set forth to transform the paradigm of landscape architecture and encourage collaboration among all design disciplines.

EDSA is a planning, landscape architecture, and urban design firm based in Fort Lauderdale. Dedicated to the proper use of land resources, the firm's global experience pays tribute to the creation of innovative and inspiring environments. Working with nature to achieve results with enduring appeal, EDSA designs outdoor spaces that are timeless, never forced—and established relationships that strengthen these concepts for future generations.



THE JEM



MIAMI'S GREATEST TREASURE

Introducing a new project, a collection of luxury private residences by Naftali Group. The premier address in Miami Worldcenter, it's the city's most desirable neighborhood.

Only one block from the bay and just moments from the city's cultural core. Designed with meticulous attention to detail, the finest finishings, and an abundance of thoughtfully curated spaces, this projects' private homes set a new standard for quality of life and craftsmanship in Miami.

STUDIO, 1, 2 AND 3 BEDROOMS

259

RESIDENCES

43-65

FLOORS

AMENITIES & SERVICES

24-hour attended lobby with a bespoke reception desk, expansive lounge area with a fireplace, custom sculpted artwork, lighting, intricate wall, ceiling and floor detailing.

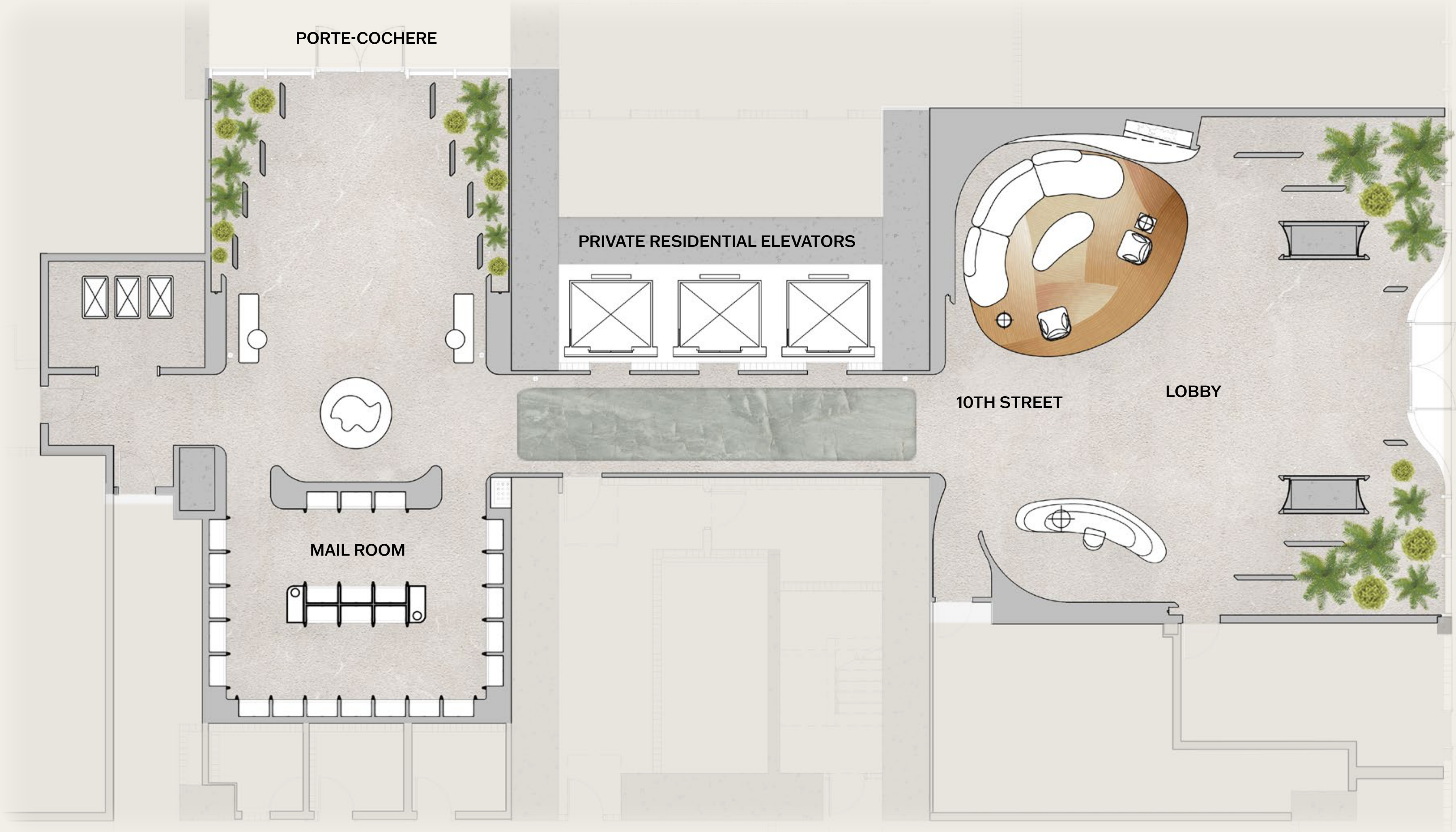
Grand porte-cochère offering 24-hour valet service appointed with abundant foliage, a sculptural centerpiece, and millwork details.

Private residential only porte-cochère entrance and valet on 2nd level.

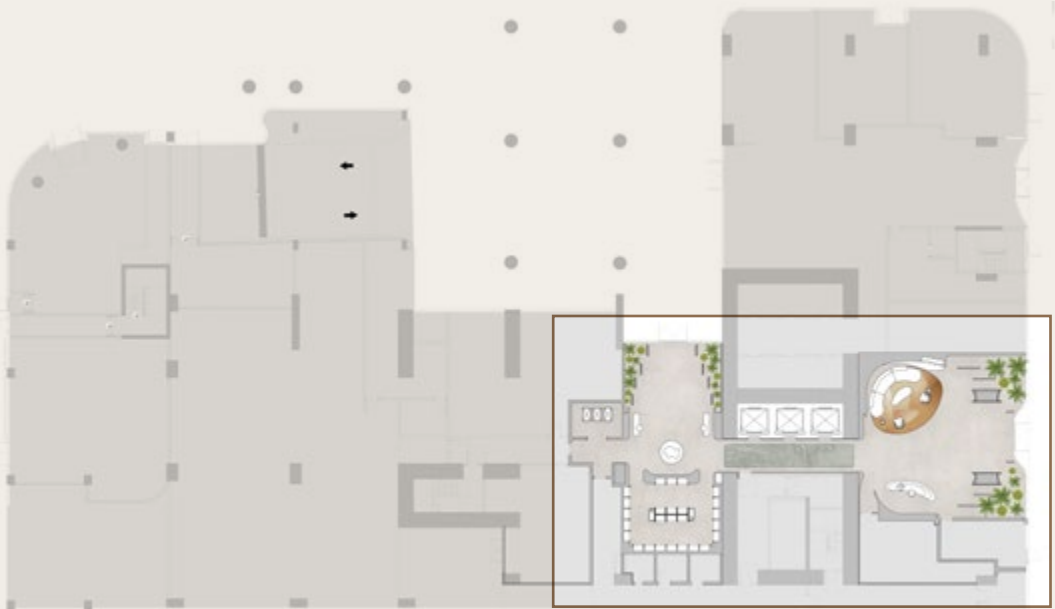
JEM Club—a masterfully curated indoor/outdoor amenity collection occupies the 50th floor of the building.



LOBBY LEVEL KEYPLATE



10TH STREET
▲





PORTE-COCHÈRE ENTRANCE

ARTIST CONCEPTUAL RENDERING. DEVELOPER MAY CHANGE WITHOUT NOTICE.



RESIDENTIAL LOBBY

ARTIST CONCEPTUAL RENDERING. DEVELOPER MAY CHANGE WITHOUT NOTICE.

JEM CLUB

50TH LEVEL

- | | | |
|---------------------------|---|-------------------------------------|
| 1. RESORT-STYLE POOL | 10. PRIVATE PHONE BOOTH | 18. STATE-OF-THE-ART FITNESS CENTER |
| 2. JACUZZI | 11. PODCAST ROOM | 19. YOGA STUDIO |
| 3. SUNKEN LOUNGE SEATING | 12. SPA LOBBY | 20. YOGA PATIO |
| 4. SUMMER KITCHEN | 13. DRY SAUNA | 21. COLD PLUNGE POOL |
| 5. SKY LOUNGE | 14. PINK HIMALAYAN SALT ROOM | 22. BOXING ARENA |
| 6. PRIVATE DINING | 15. STEAM ROOM | |
| 7. GAME LOUNGE | 16. HIS/HERS CHANGING ROOM AND LOCKER ROOMS | |
| 8. SPIRITS TASTING LOUNGE | 17. PRIVATE TREATMENT ROOM | |
| 9. CO-WORKING LOUNGE | | |



OUTDOOR ENTERTAINMENT

- Resort style pool with cabanas, floating daybeds, and a signature sculpture.
- Jacuzzi zone with lounge seating and an outdoor tropical shower.
- Alfresco lounge with lush tropical landscaping, water details, and a variety of seating areas.
- Sunken lounge seating area surrounded by reflection pools.
- Summer Kitchen outdoor dining area, providing an oasis for al fresco dining











OASIS GARDEN

ARTIST CONCEPTUAL RENDERING. DEVELOPER MAY CHANGE WITHOUT NOTICE.



JACUZZI

ARTIST CONCEPTUAL RENDERING. DEVELOPER MAY CHANGE WITHOUT NOTICE.



POOL LOUNGE SEATING

ARTIST CONCEPTUAL RENDERING. DEVELOPER MAY CHANGE WITHOUT NOTICE.

ENTERTAINMENT

- Indoor Sky Lounge with a feature fireplace, custom stone bar, and intimate seating areas.
- Glass-enclosed private dining room with a wet bar featuring direct access to the outdoor amenity deck.
- Game room and entertainment lounge with custom millwork and billiards table, a large-format television, lounge seating, and direct outdoor access.
- Spirits tasting room with amber glass shelving and bronze decanter racks.





INDOOR SKY LOUNGE

ARTIST CONCEPTUAL RENDERING. DEVELOPER MAY CHANGE WITHOUT NOTICE.



PRIVATE DINING ROOM

ARTIST CONCEPTUAL RENDERING. DEVELOPER MAY CHANGE WITHOUT NOTICE.



GAME ROOM AND ENTERTAINMENT LOUNGE

ARTIST CONCEPTUAL RENDERING. DEVELOPER MAY CHANGE WITHOUT NOTICE.



SPIRITS TASTING ROOM

ARTIST CONCEPTUAL RENDERING. DEVELOPER MAY CHANGE WITHOUT NOTICE.

OFFICES

- Co-working lounge with individual and group seating areas.
- Private phone booths and a podcast room.





CO-WORKING LOUNGE

ARTIST CONCEPTUAL RENDERING. DEVELOPER MAY CHANGE WITHOUT NOTICE.

HEALTH & WELLNESS

- Fitness center with a private training/yoga studio and state-of-the-art equipment.
- Outdoor fitness area with a boxing arena and strength training opportunities.
- Yoga patio with an adjacent cold plunge pool and landscaped mist garden.
- Spa suite including a sculptural dry sauna, a steam room, and a pink Himalayan salt room.
- Private treatment room with a reclining chair for outcall massages and cosmetic services.
- Changing facilities with lockers and shower area.



SCULPTURAL DRY SAUNA

ARTIST CONCEPTUAL RENDERING. DEVELOPER MAY CHANGE WITHOUT NOTICE.



FITNESS CENTER
WITH PRIVATE TRAINING

ARTIST CONCEPTUAL RENDERING. DEVELOPER MAY CHANGE WITHOUT NOTICE.



YOGA STUDIO

ARTIST CONCEPTUAL RENDERING. DEVELOPER MAY CHANGE WITHOUT NOTICE.



TREATMENT ROOM

ARTIST CONCEPTUAL RENDERING. DEVELOPER MAY CHANGE WITHOUT NOTICE.



PINK HIMALAYAN SALT ROOM

ARTIST CONCEPTUAL RENDERING. DEVELOPER MAY CHANGE WITHOUT NOTICE.



STEAM ROOM

ARTIST CONCEPTUAL RENDERING. DEVELOPER MAY CHANGE WITHOUT NOTICE.



OUTDOOR YOGA

ARTIST CONCEPTUAL RENDERING. DEVELOPER MAY CHANGE WITHOUT NOTICE.



OUTDOOR FITNESS / BOXING ARENA

ARTIST CONCEPTUAL RENDERING. DEVELOPER MAY CHANGE WITHOUT NOTICE.

THE RESIDENCES







THE RESIDENCES

- Studio to four-bedroom residences including dramatic Penthouse residences at the building's crown.
- Floor-to-ceiling impact windows spanning full living spaces with balcony doors leading to fully tiled terraces with glass railings.
- White oak flooring plank throughout the residences .
- Wood interior doors with chrome hardware throughout.
- Laundry rooms include stacked or side-by-side front-load washers and dryers. Laundry rooms with a sink in select residences.

THE KITCHENS

- Custom-designed millwork cabinetry designed by Rockwell Group.
- Honed Calacatta Gold Quartz slab countertop and backsplash.
- Honed Calacatta Gold Quartz slab kitchen island with oak bases; in select residences.
- Miele (or comparable) oak paneled refrigerator and freezer.
- Miele (or comparable) oak paneled dishwasher.
- Miele (or comparable) fully integrated wine refrigerators; full-height Sub-Zero (or comparable in select residences).
- Miele (or comparable) cooktop with speed oven; warming drawer and convection oven in select residences.
- Kohler stainless steel undermount sink paired with pull-out spray featuring three-functions and garbage disposal.





KITCHEN



PRIMARY BEDROOM

PRIMARY BATHROOMS

- Custom vanities designed by Rockwell Group, featuring oak finishings and polished nickel hardware with storage and open shelving.
- Custom-designed medicine cabinets with mirror-mounted integrated lighting and storage.
- Honed Bianco Dolomite white porcelain slab countertop.
- Honed Bianco Dolomite white porcelain tiled floors and walls; mosaic floor tile in shower.
- Kohler vanity sink basins with polished nickel Kohler faucets.
- Kohler polished nickel hand shower, showerhead.
- Porcelanosa free-standing soaking tub with Kohler free-standing polished nickel standing tub faucet; in select residences.
- Custom-stone niche in showers.
- Kohler toilet with dual flush mechanism





PRIMARY BATHROOM

ARTIST CONCEPTUAL RENDERING. DEVELOPER MAY CHANGE WITHOUT NOTICE.

BATHROOMS

SECONDARY BATHROOMS

- Custom vanities designed by Rockwell Group featuring white oak finish and polished nickel hardware .
- Kohler vanity sink basins with polished nickel Kohler faucets.
- Kohler tubs.
- Kohler toilets.
- Honed Bianco Dolomite white porcelain slab countertop.
- Honed Bianco Dolomite white porcelain stone floor and wall tiles.

POWDER ROOMS

- Bespoke vanities featured Honed Dolomite porcelain slabs and a Dolomite fluted slab feature wall.
- Custom sconces flanking a custom mirror.
- White oak plank-wood flooring.
- Kohler toilet with dual flush mechanism.
- Kohler vanity basin with Kohler faucet in polished nickel.
- Custom cove lighting.



FLOORS

43-46

TYPICAL RESIDENCE TYPES

STUDIO / 1 BATHROOM

JR 1 BEDROOM / 1 BATHROOM

1 BEDROOM / 1.5 BATHROOM / DEN

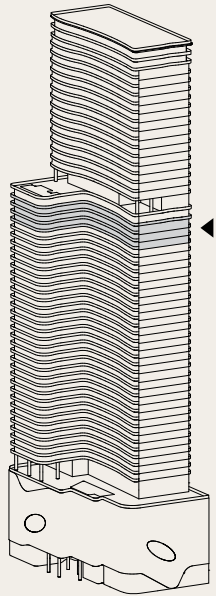
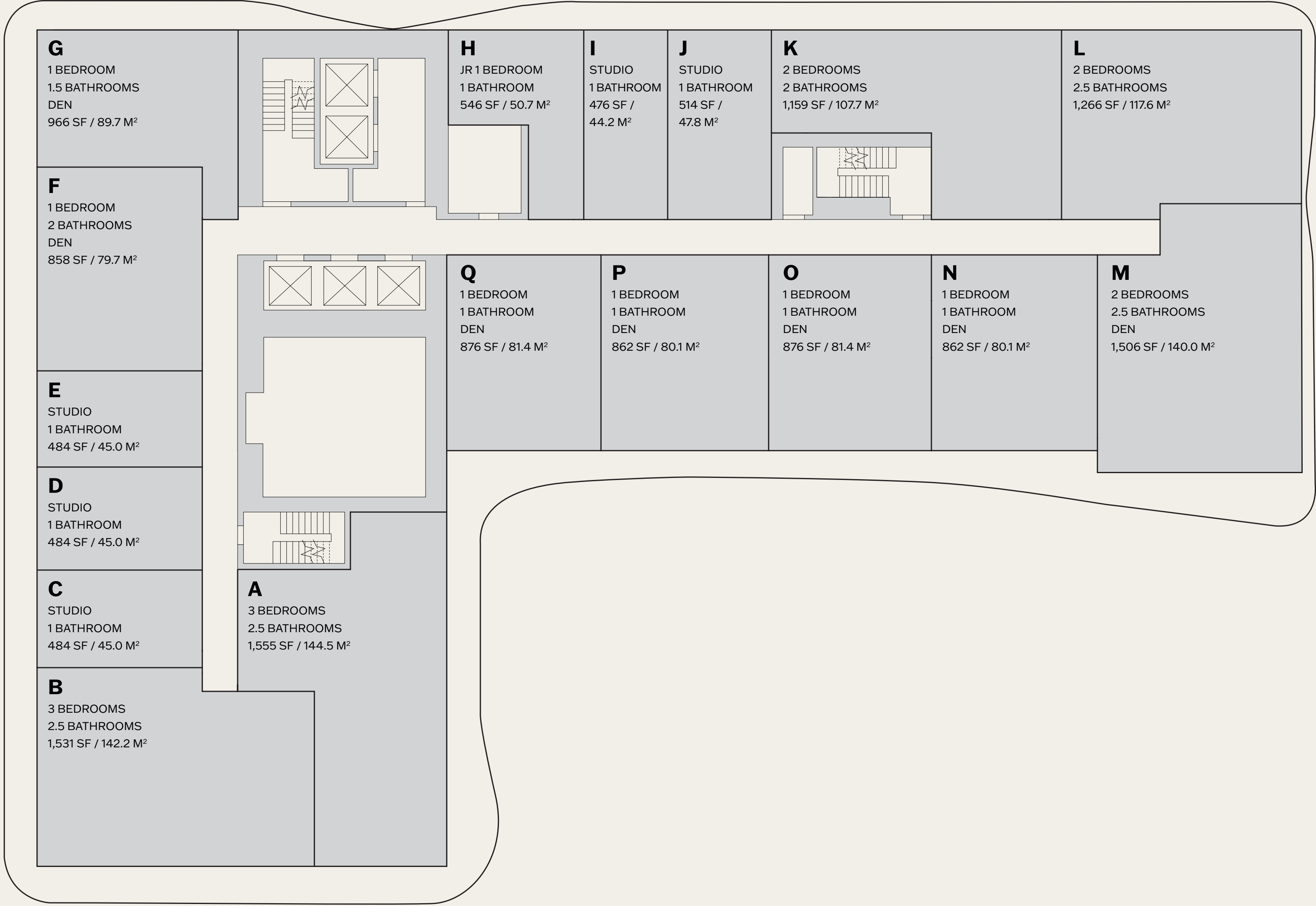
1 BEDROOM / 2 BATHROOMS / DEN

2 BEDROOMS / 2 BATHROOMS

2 BEDROOMS / 2.5 BATHROOMS

2 BEDROOMS / 2.5 BATHROOMS / DEN

3 BEDROOMS / 2.5 BATHROOMS



FLOORS

51-58

TYPICAL RESIDENCE TYPES

STUDIO / 1 BATHROOM

JR 1 BEDROOM / 1 BATHROOM

1 BEDROOM / 1 BATHROOM / DEN

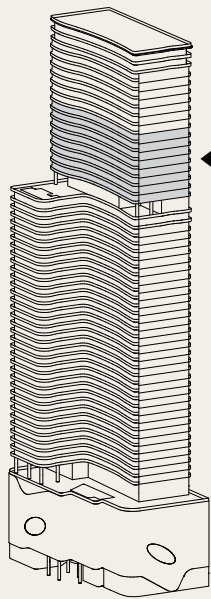
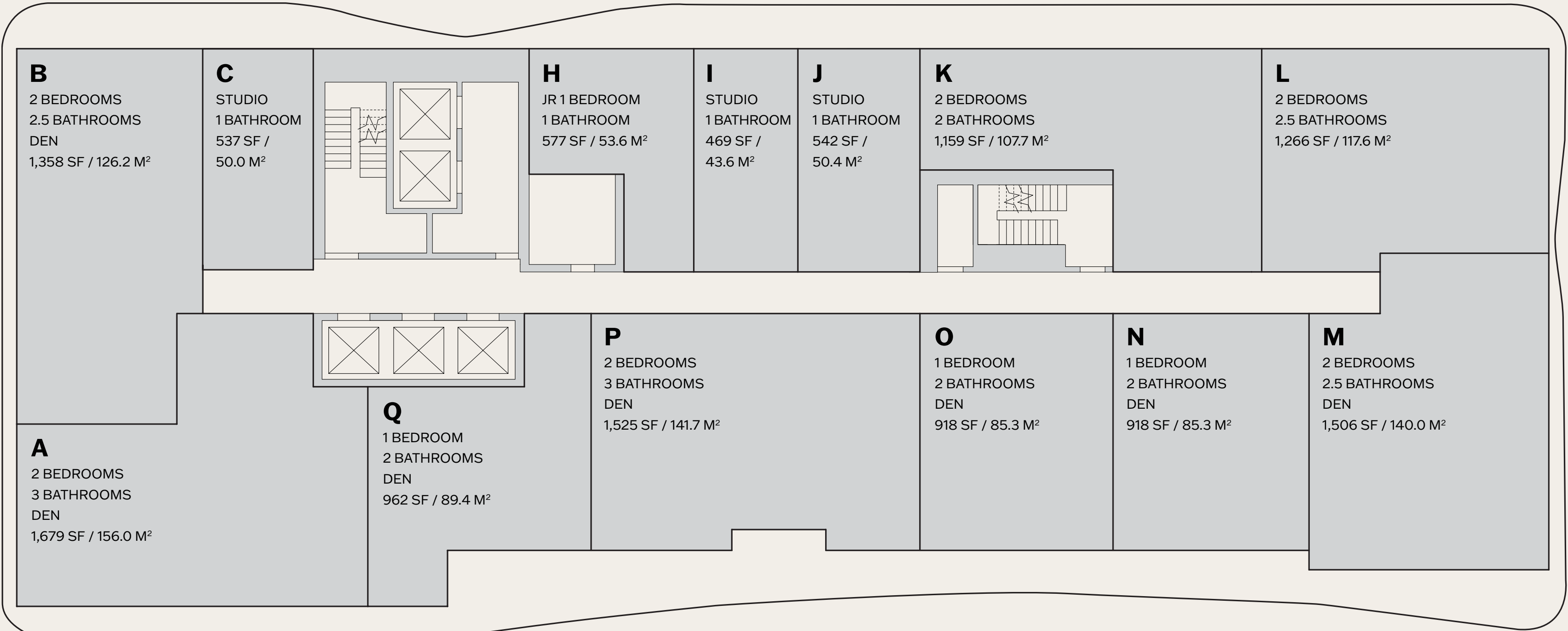
1 BEDROOM / 2 BATHROOMS / DEN

2 BEDROOMS / 2.5 BATHROOMS

2 BEDROOMS / 2.5 BATHROOMS / DEN

2 BEDROOMS / 3 BATHROOMS

2 BEDROOMS / 3 BATHROOMS / DEN



FLOORS

59-65

TYPICAL RESIDENCE TYPES

STUDIO / 1 BATHROOM

JR 1 BEDROOM / 1 BATHROOM

1 BEDROOM / 2 BATHROOMS / DEN

2 BEDROOMS / 2 BATHROOMS

2 BEDROOMS / 2.5 BATHROOMS

2 BEDROOMS / 3 BATHROOMS / DEN

3 BEDROOMS / 3 BATHROOMS

3 BEDROOMS / 3.5 BATHROOMS

