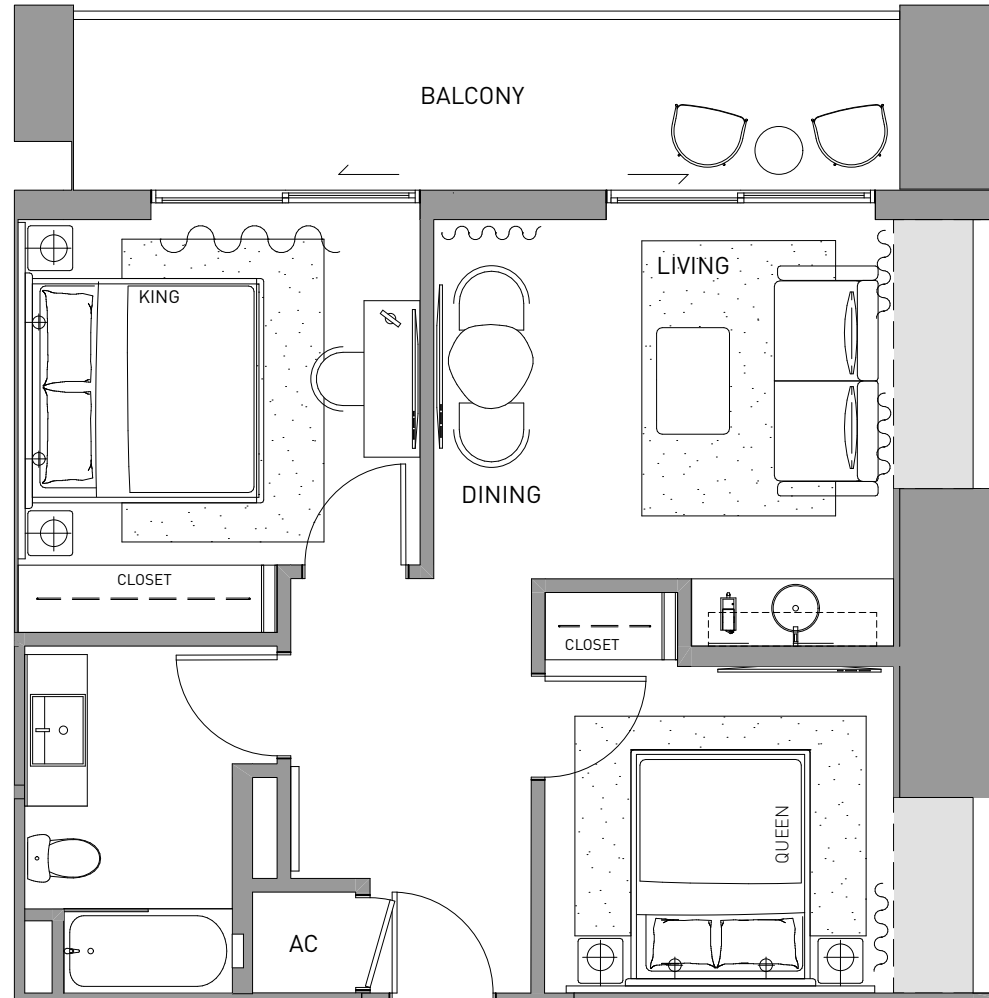
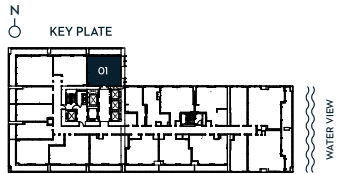
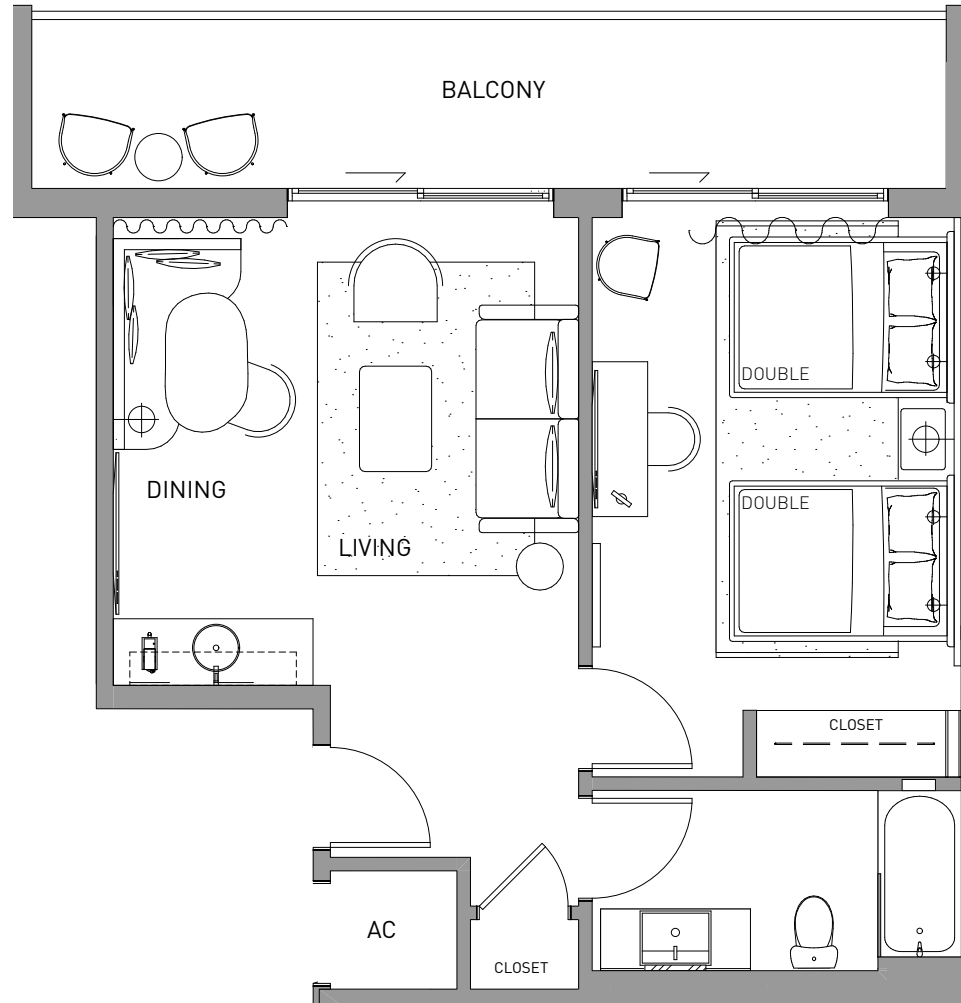
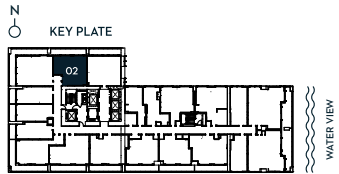


2 BEDROOM 1 BATHROOM
+ BALCONY

LINE 01 FLOOR 16-23

INTERIOR 730 SF 68 M²
BALCONY 159 SF 15 M²
TOTAL 889 SF 83 M²

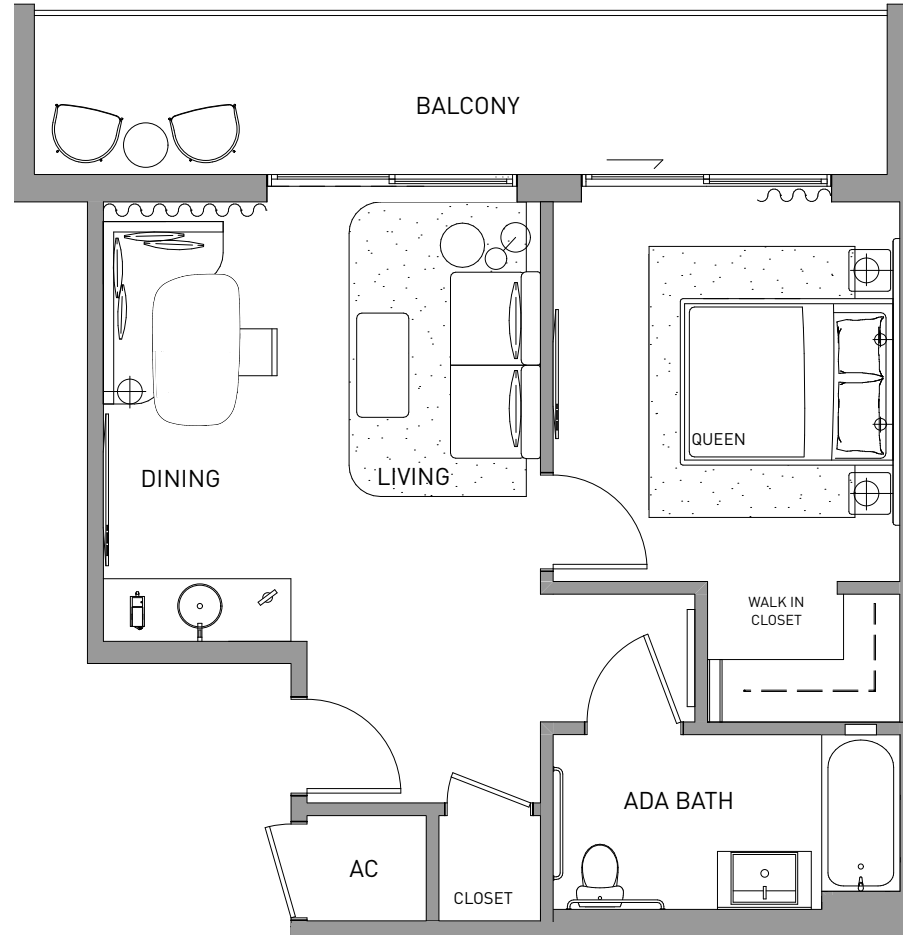
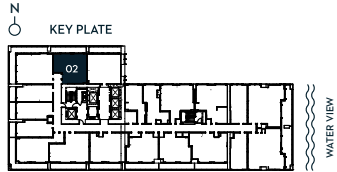


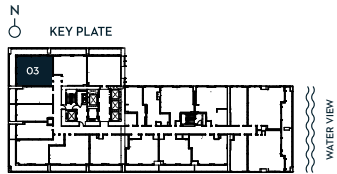
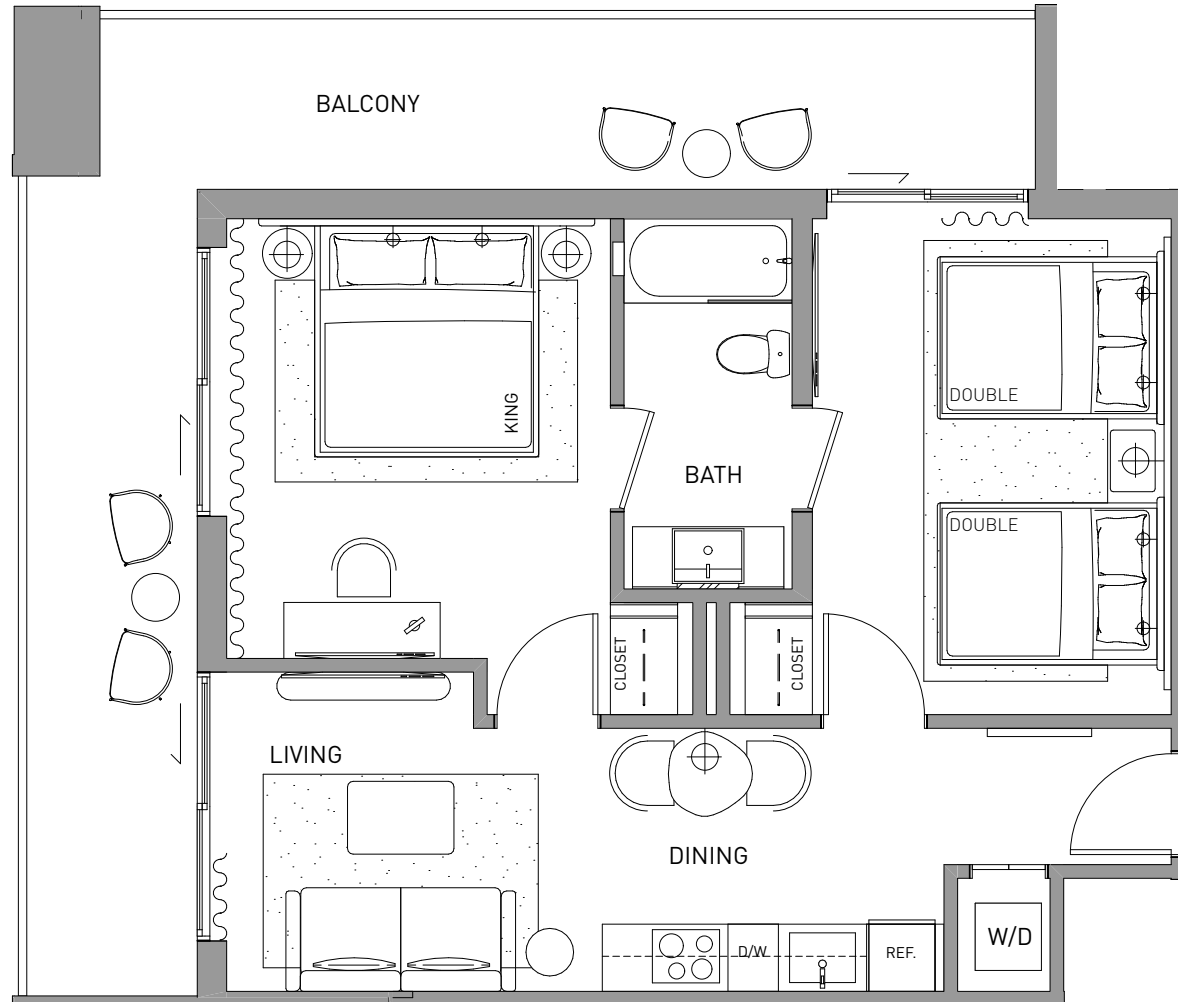


1 BEDROOM 1 BATHROOM
+ BALCONY

LINE FLOOR
02 16-23
(ADA)

INTERIOR 594 SF 55 M²
BALCONY 164 SF 15 M²
TOTAL 758 SF 73 M²

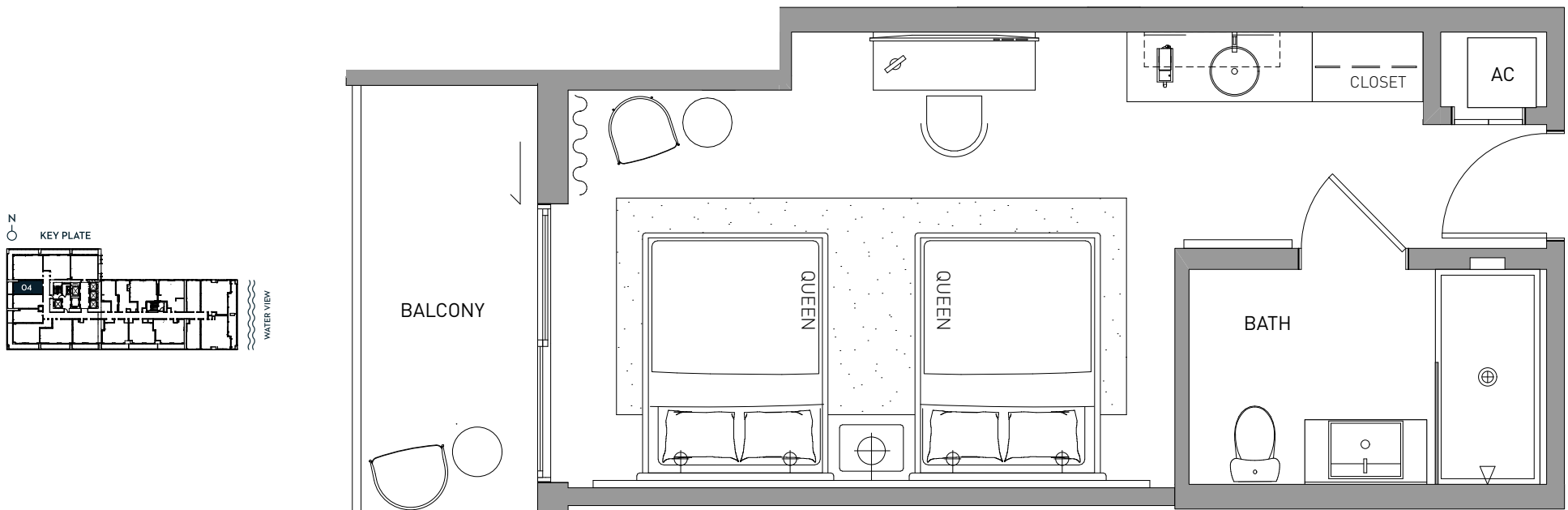




STUDIO 1 BATHROOM
+ BALCONY

LINE 04 FLOOR 16-23

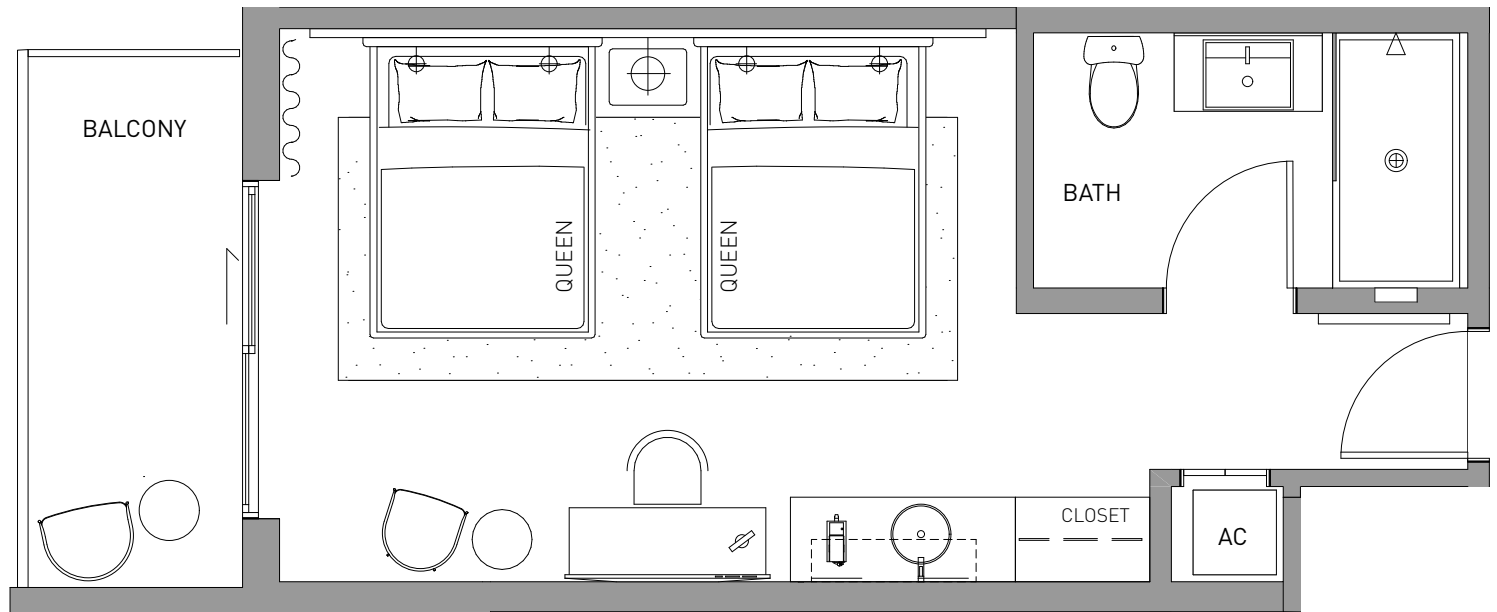
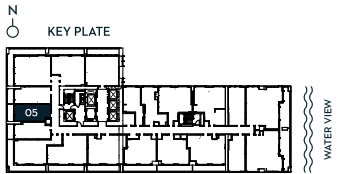
INTERIOR 398 SF 37 M²
BALCONY 71 SF 7 M²
TOTAL 469 SF 44 M²



STUDIO 1 BATHROOM
+ BALCONY

LINE 05 FLOOR 16-23

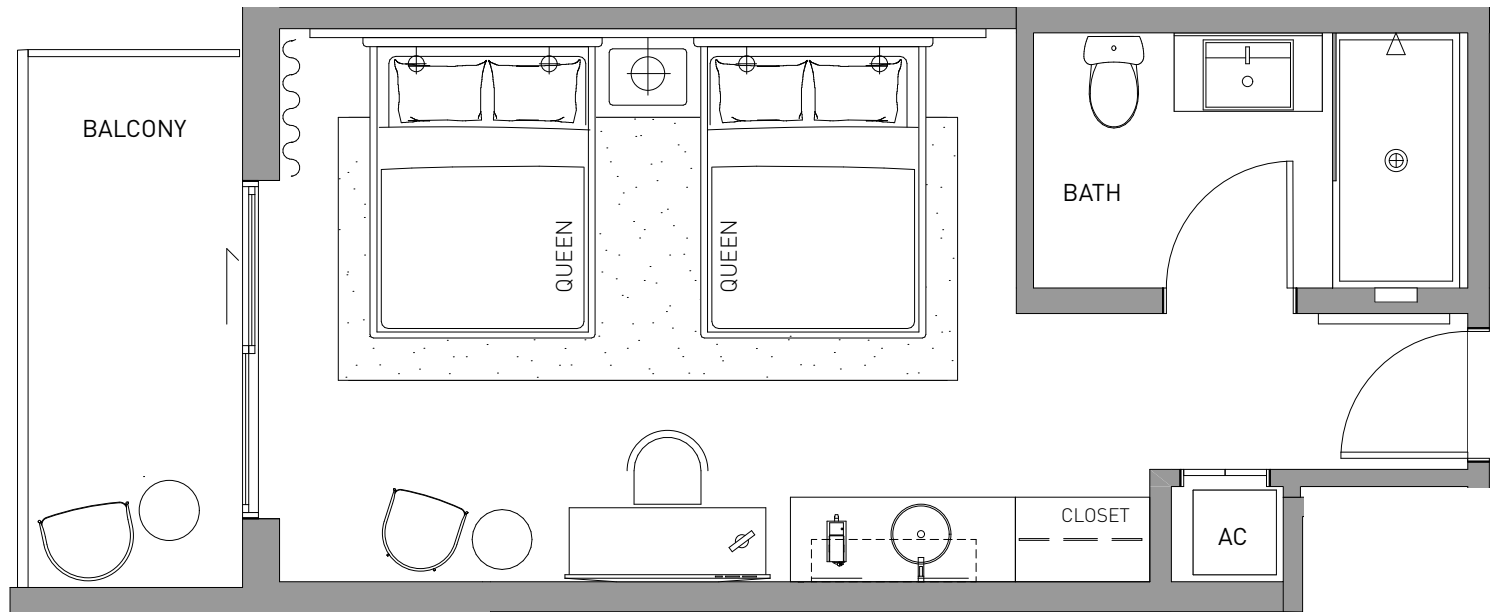
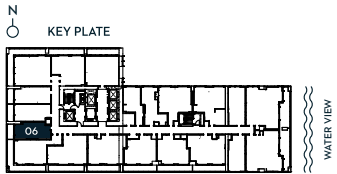
INTERIOR 389 SF 36 M²
BALCONY 80 SF 7 M²
TOTAL 469 SF 44 M²



STUDIO 1 BATHROOM
+ BALCONY

LINE FLOOR
06 16-23

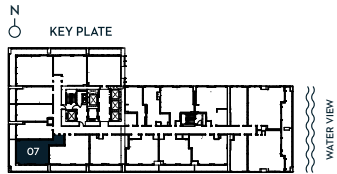
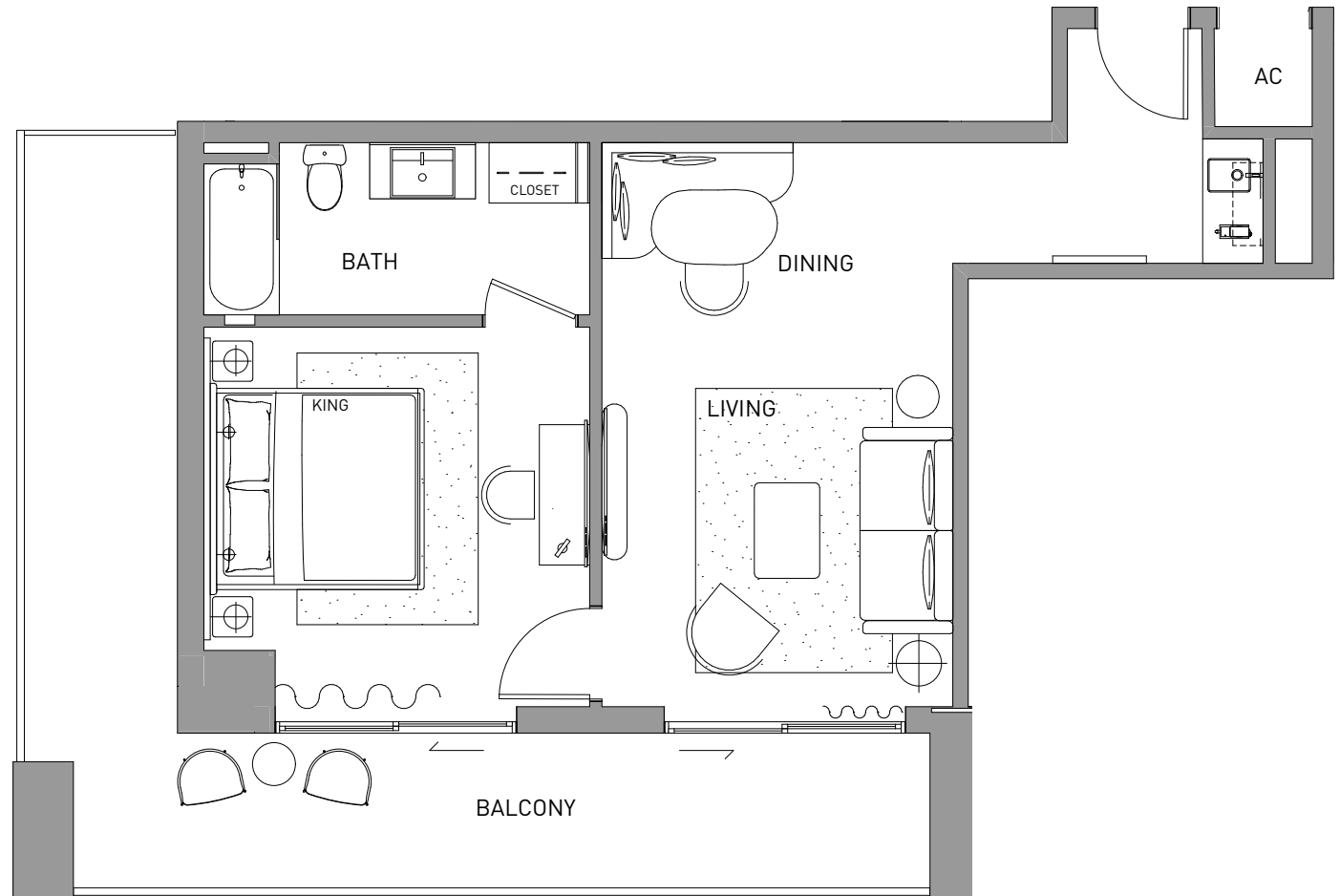
INTERIOR 389 SF 36 M²
BALCONY 71 SF 7 M²
TOTAL 460 SF 43 M²

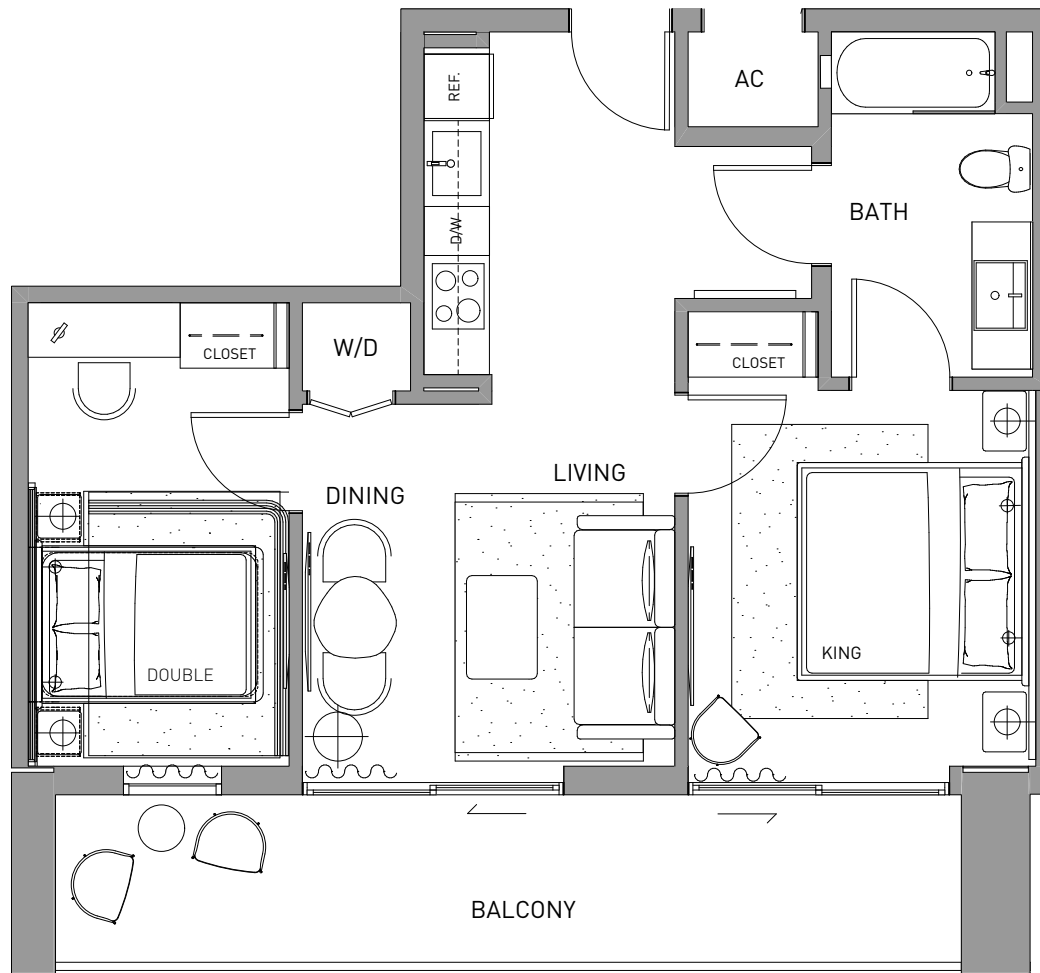
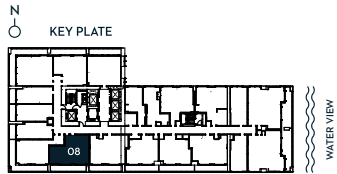


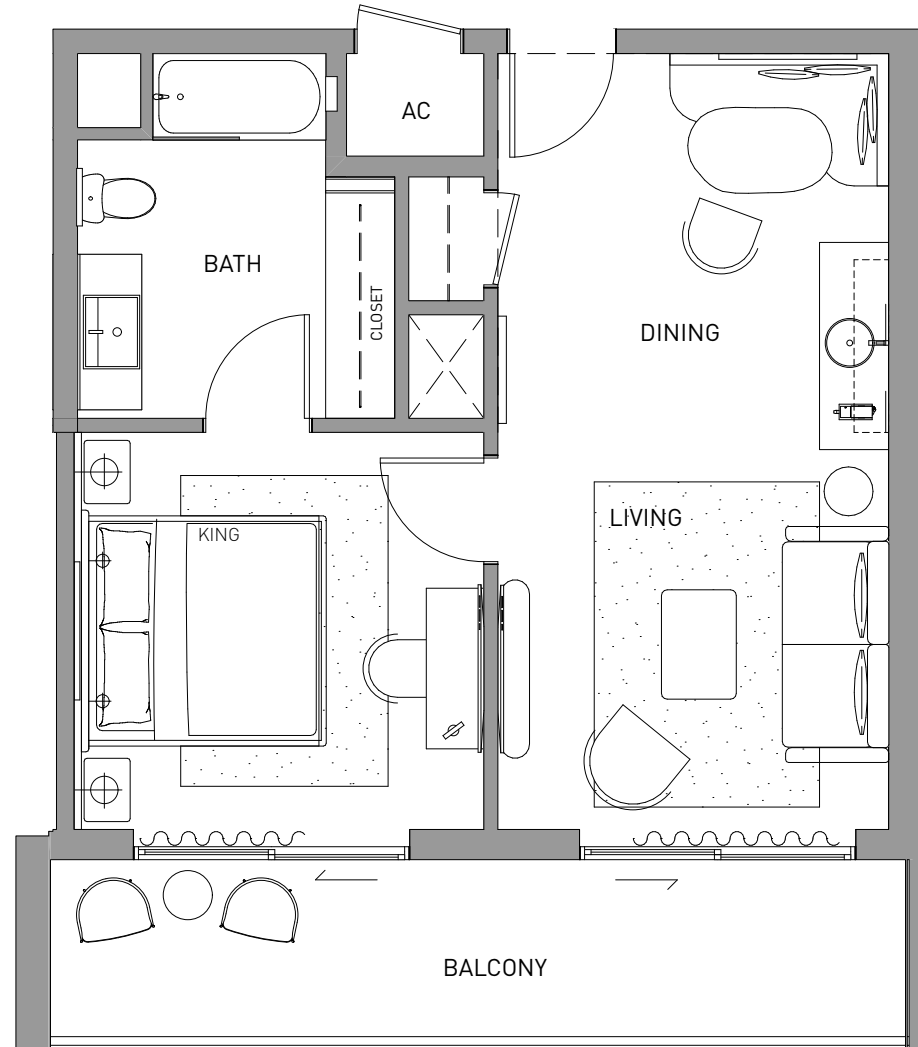
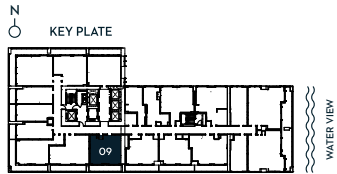
1 BEDROOM 1 BATHROOM
+ BALCONY

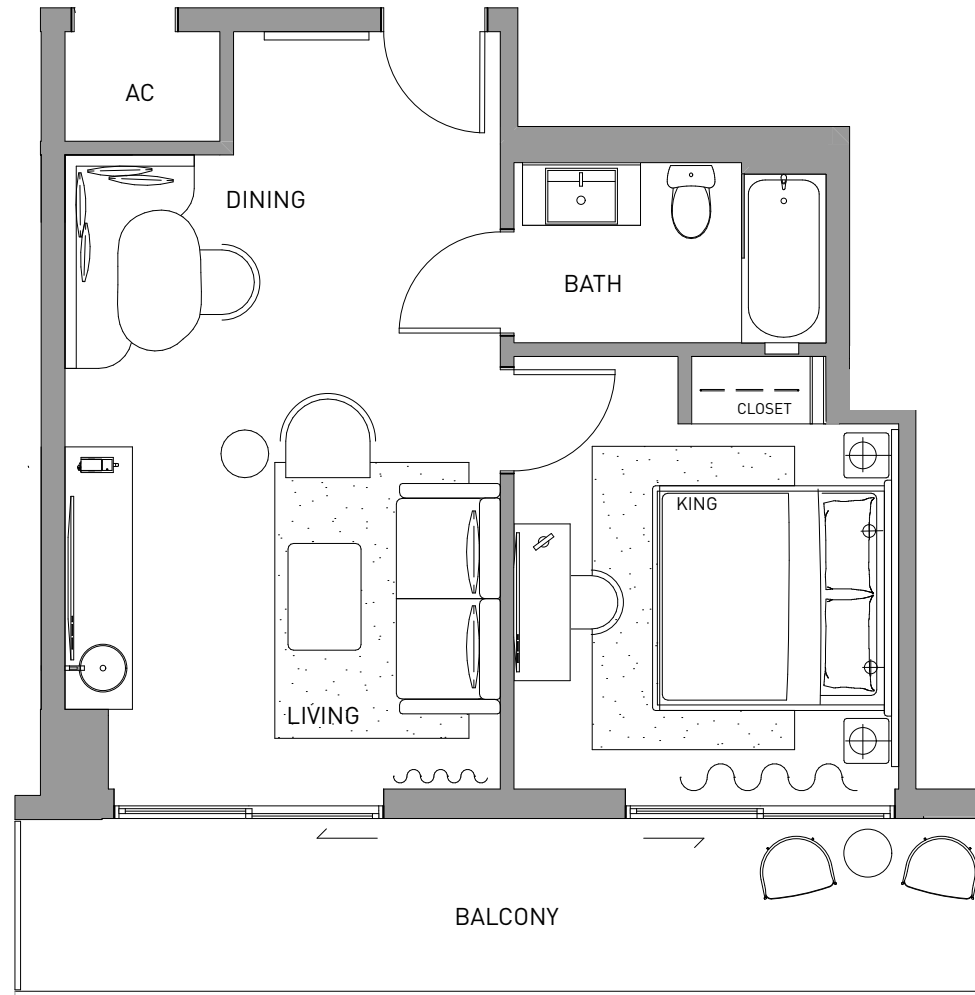
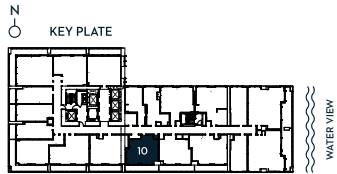
LINE 07 FLOOR 16-23

INTERIOR	604 SF	56 M ²
BALCONY	282 SF	26 M ²
TOTAL	886 SF	82 M ²







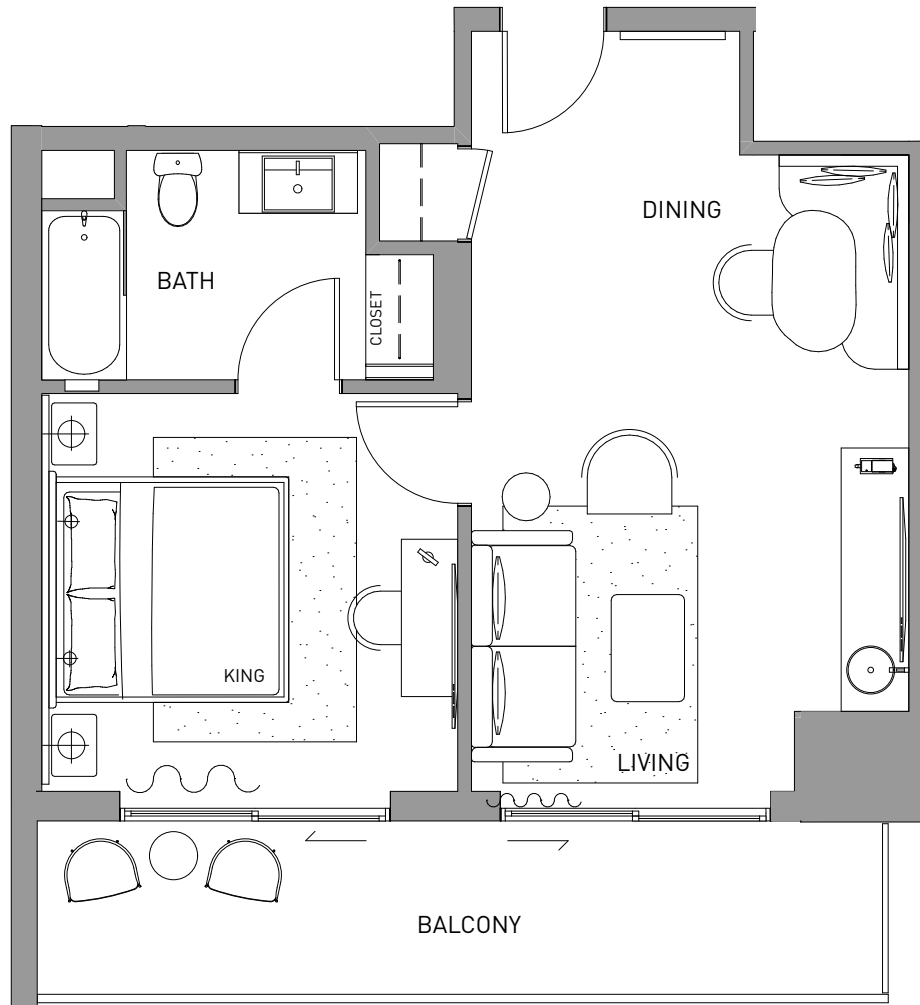
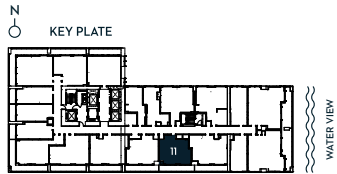


DEVELOPED BY
SIXTH STREET
MIAMI PARTNERS LLC

SALES & MARKETING BY
CERVERA
REAL ESTATE • 1969

GALEMIAMI.COM | 1 888 / 508 GALE [508 4253] | TEN MUSEUM PARK 1040 BISCAYNE BLVD, 3RD FLOOR MIAMI, FL 33132

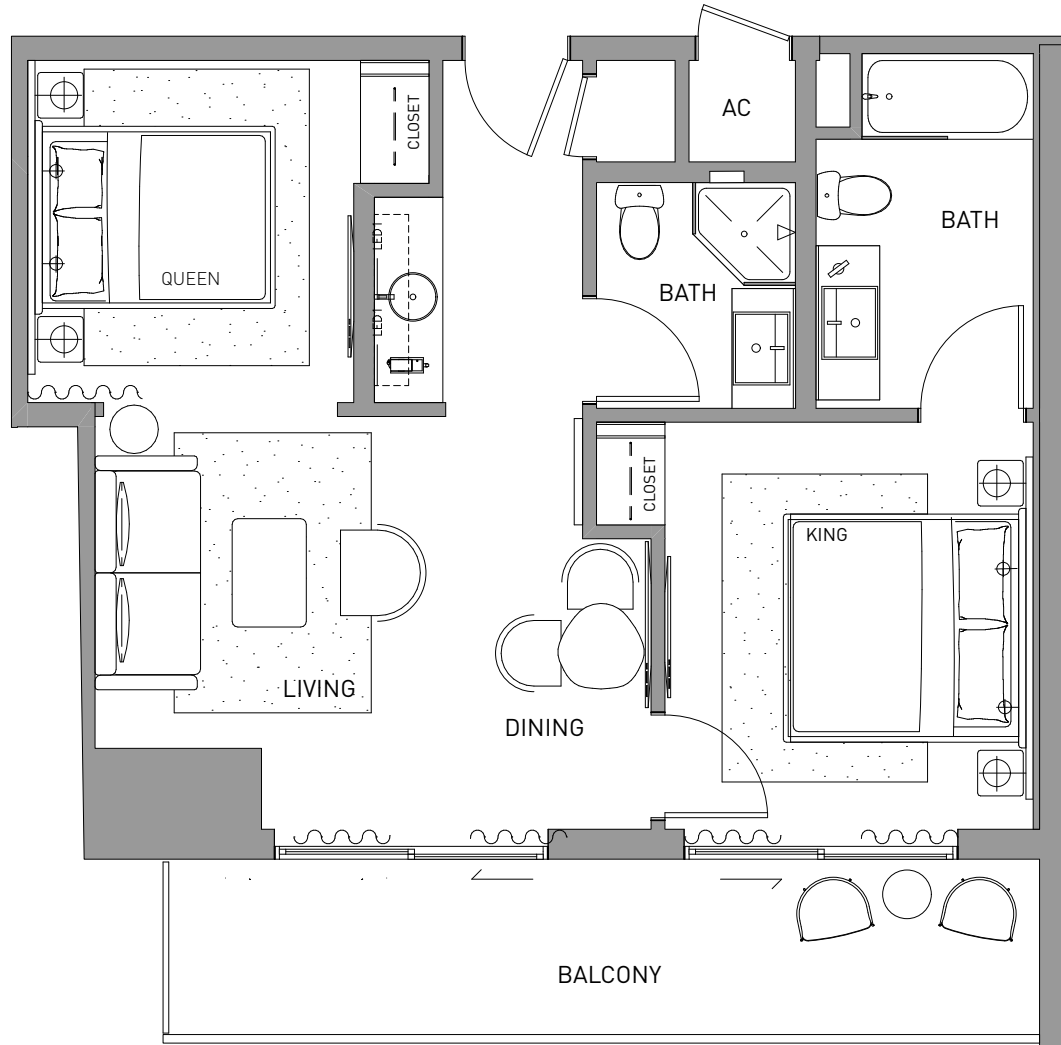
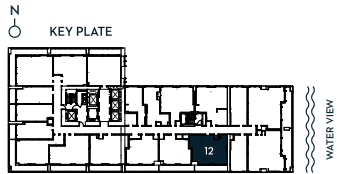
GENERAL REPRESENTATIONS CANNOT BE RELIED UPON AS CORRECTLY STATING THE REPRESENTATIONS OF THE DEVELOPER. FOR CORRECT REPRESENTATIONS, MAKE REFERENCE TO THIS BROCHURE AND TO THE DOCUMENTS REQUIRED BY SECTION 718.503, FLORIDA STATUTES, TO BE FURNISHED BY A DEVELOPER TO A BUYER OR LESSEE. THIS IS NOT INTENDED TO BE AN OFFER TO SELL, OR SOLICITATION TO BUY, CONDOMINIUM UNITS TO RESIDENTS OF ANY JURISDICTION WHERE PROHIBITED BY LAW, AND YOUR ELIGIBILITY FOR PURCHASE WILL DEPEND UPON YOUR STATE OF RESIDENCY. THE OFFERING IS MADE ONLY BY THE PROSPECTUS FOR THE CONDOMINIUM AND NO STATEMENT SHOULD BE RELIED UPON IF NOT MADE IN THE PROSPECTUS. STATED INTERIOR SQUARE FOOTAGE IS MEASURED TO THE EXTERIOR FACE OF EXTERIOR WALLS AND TO THE CENTERLINE OF INTERIOR DEMISING WALLS OR TO THE EXTERIOR FACE OF WALLS ADJOINING CORRIDORS OR OTHER COMMON ELEMENTS OR SHARED FACILITIES WITHOUT EXCLUDING AREAS THAT MAY BE OCCUPIED BY COLUMNS OR OTHER STRUCTURAL COMPONENTS. THIS METHOD OF MEASUREMENT VARIES FROM, AND IS LARGER THAN, THE DIMENSIONS THAT WOULD BE DETERMINED BY USING THE DESCRIPTION AND THE DEFINITION OF THE UNIT SET FORTH IN THE DECLARATION (WHICH GENERALLY ONLY INCLUDES THE INTERIOR AIRSPACE BETWEEN THE PERIMETER WALLS AND EXCLUDES STRUCTURAL COMPONENTS). FOR REFERENCE, THE AREA OF THE UNIT DETERMINED IN ACCORDANCE WITH THE UNIT BOUNDARIES SET FORTH IN THE DECLARATION IS SET FORTH IN EXHIBIT 3 TO THE DECLARATION. ALL DIMENSIONS ARE APPROXIMATE AND MAY VARY WITH ACTUAL CONSTRUCTION.



1 BEDROOM + DEN 2 BATHROOM

LINE 12 FLOOR 16-23

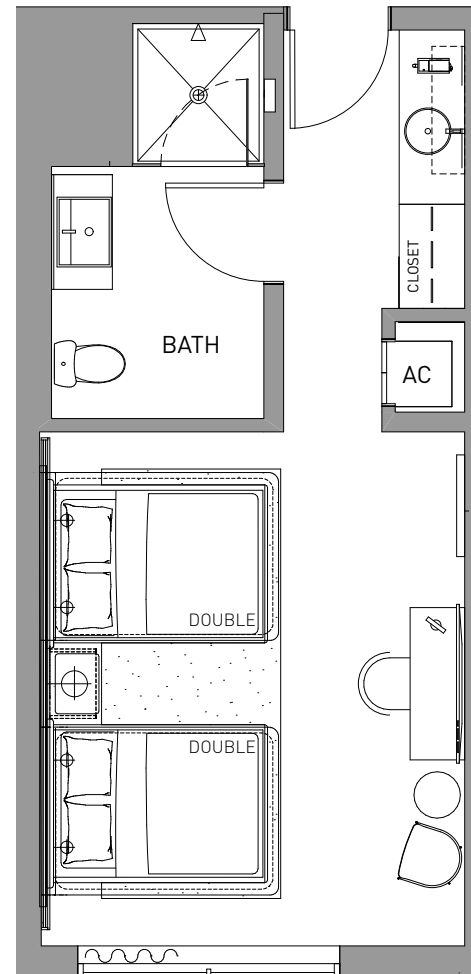
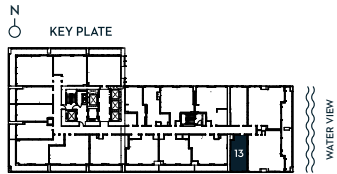
INTERIOR 703 SF 65 M²
BALCONY 140 SF 13 M²
TOTAL 843 SF 78 M²

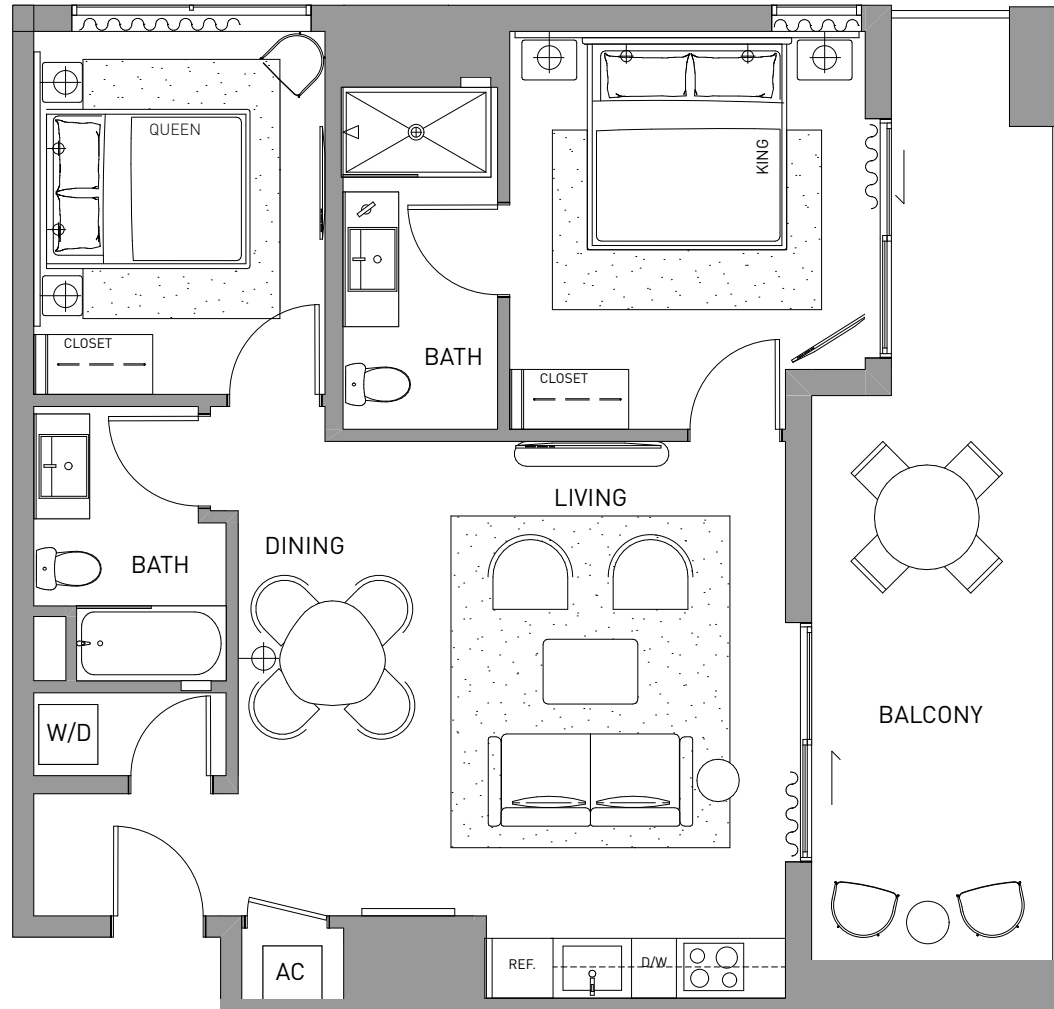
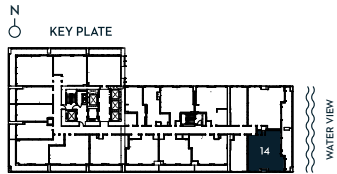


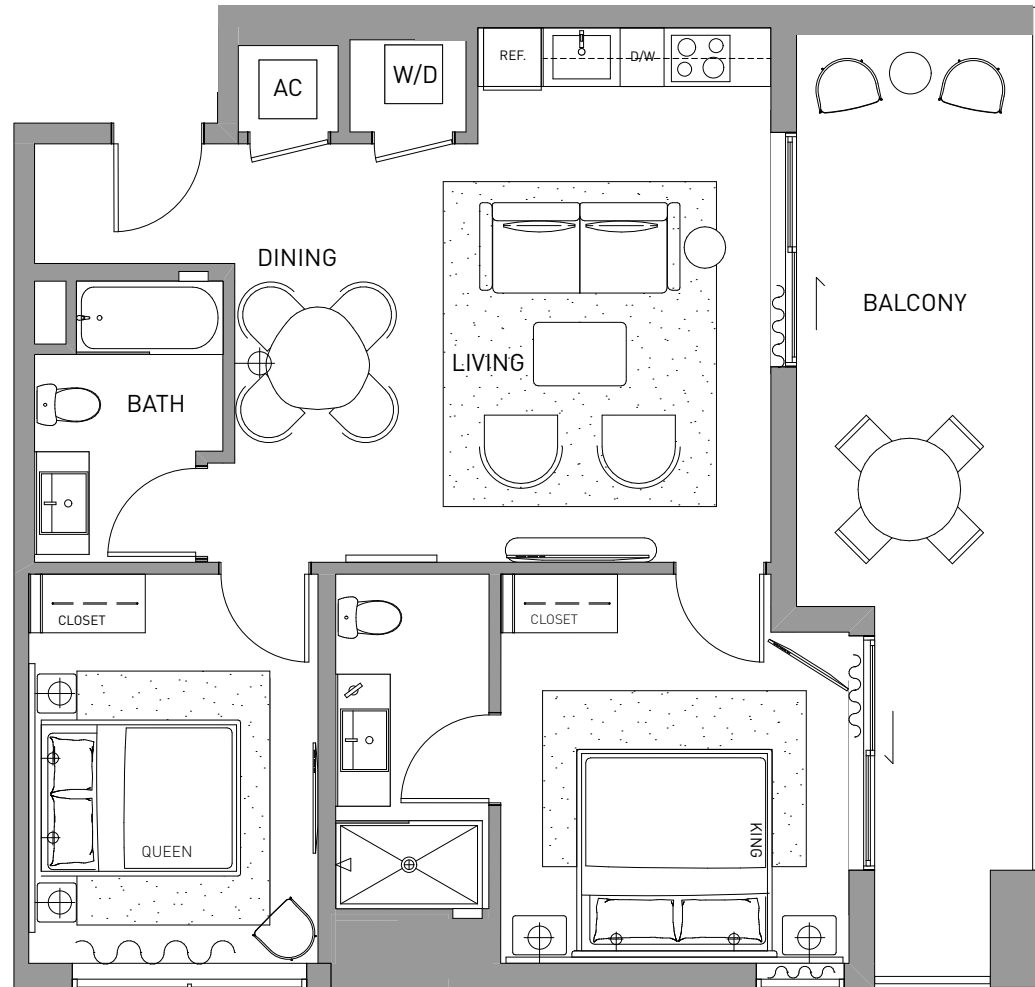
STUDIO 1 BATHROOM

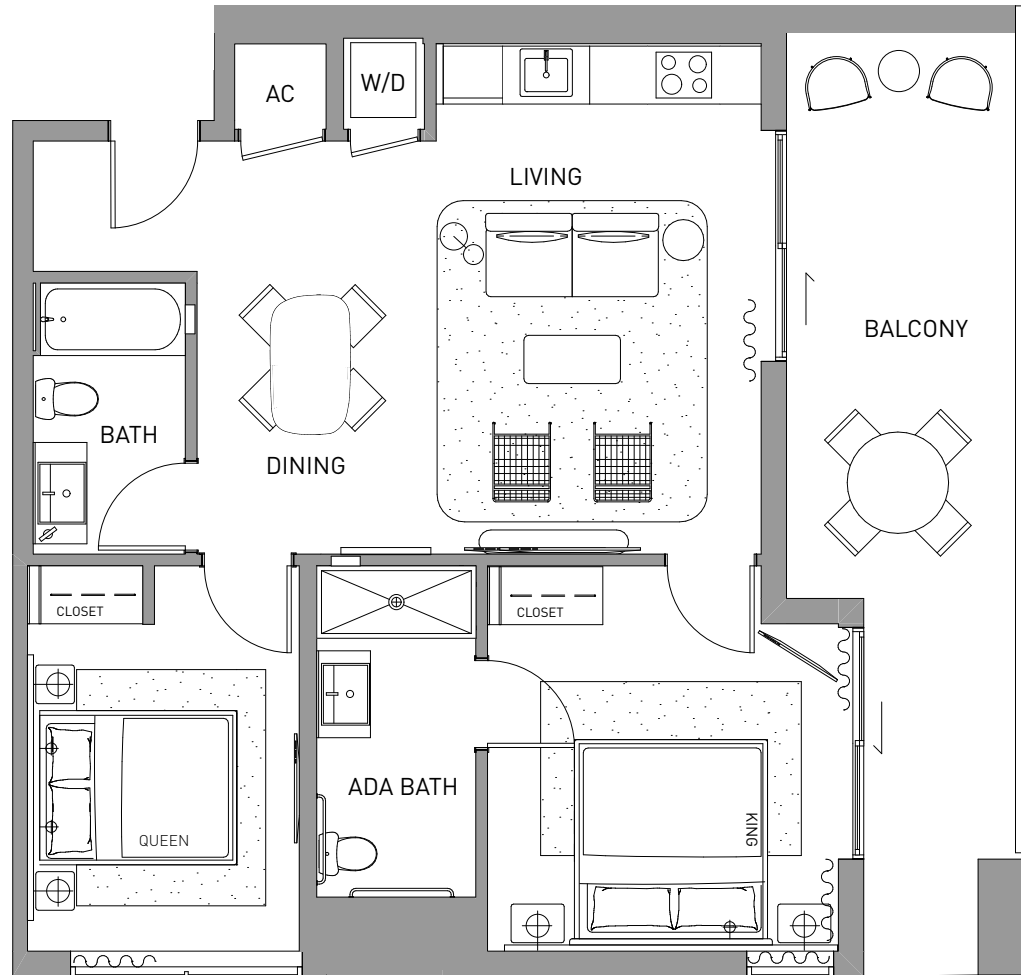
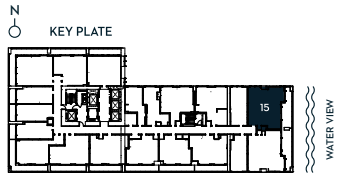
LINE 13 FLOOR 16-23

INTERIOR 414 SF 38 M²
TOTAL 414 SF 38 M²





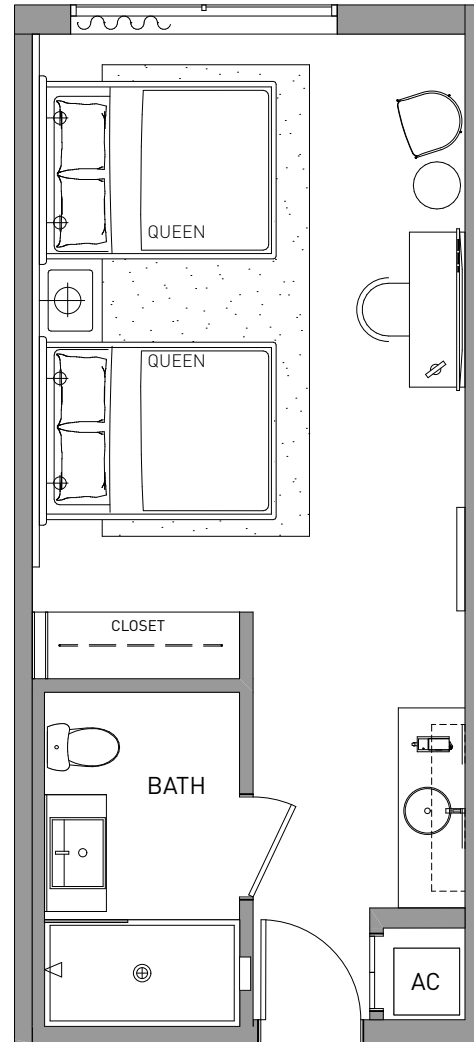
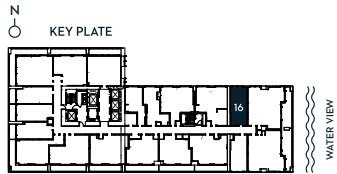


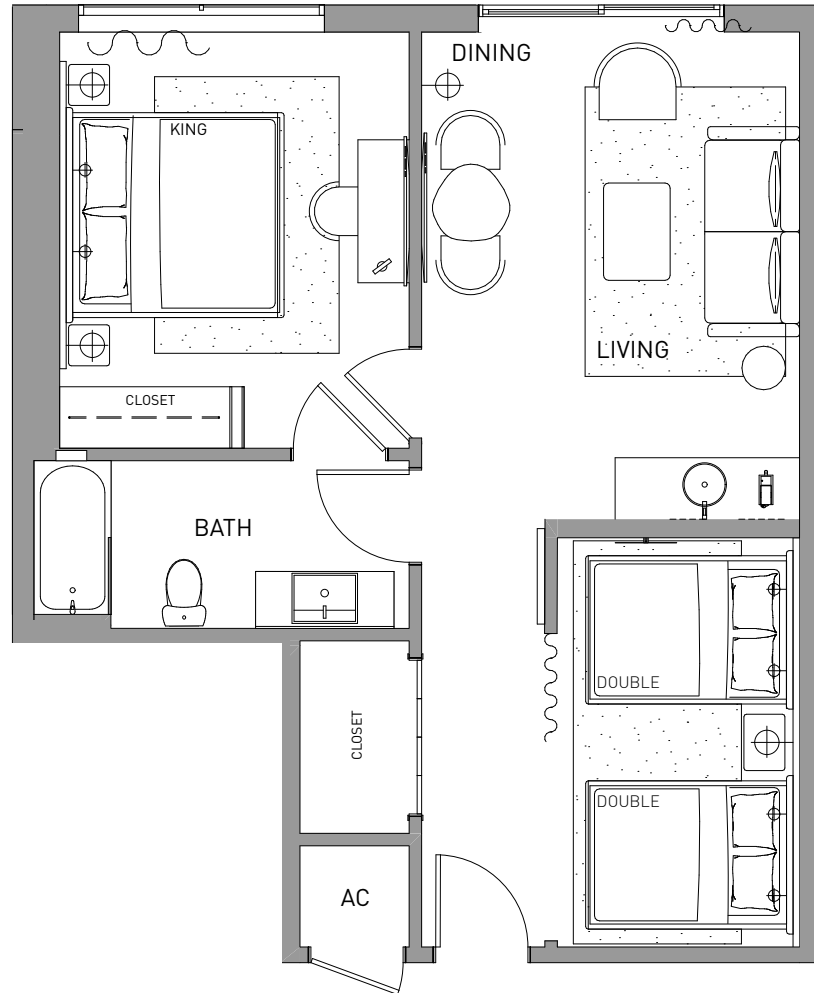
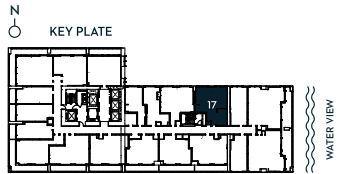


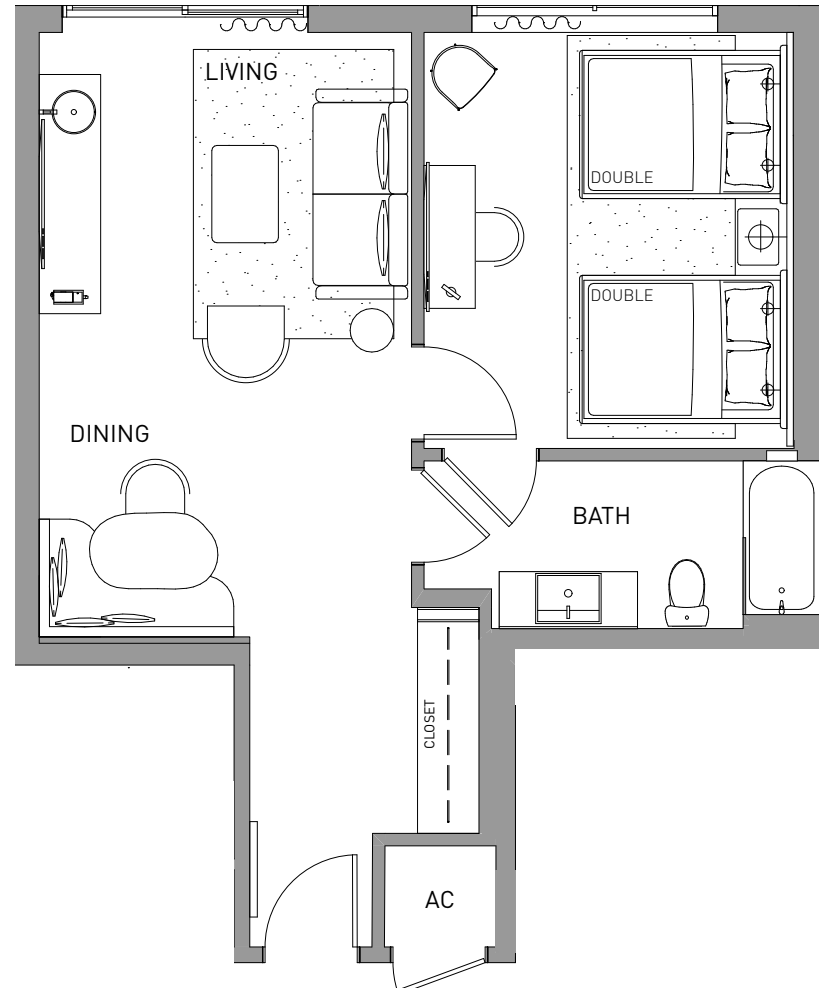
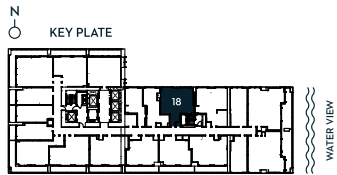
STUDIO 1 BATHROOM

LINE 16 FLOOR 16-23

INTERIOR 447 SF 42 M²
TOTAL 447 SF 42 M²



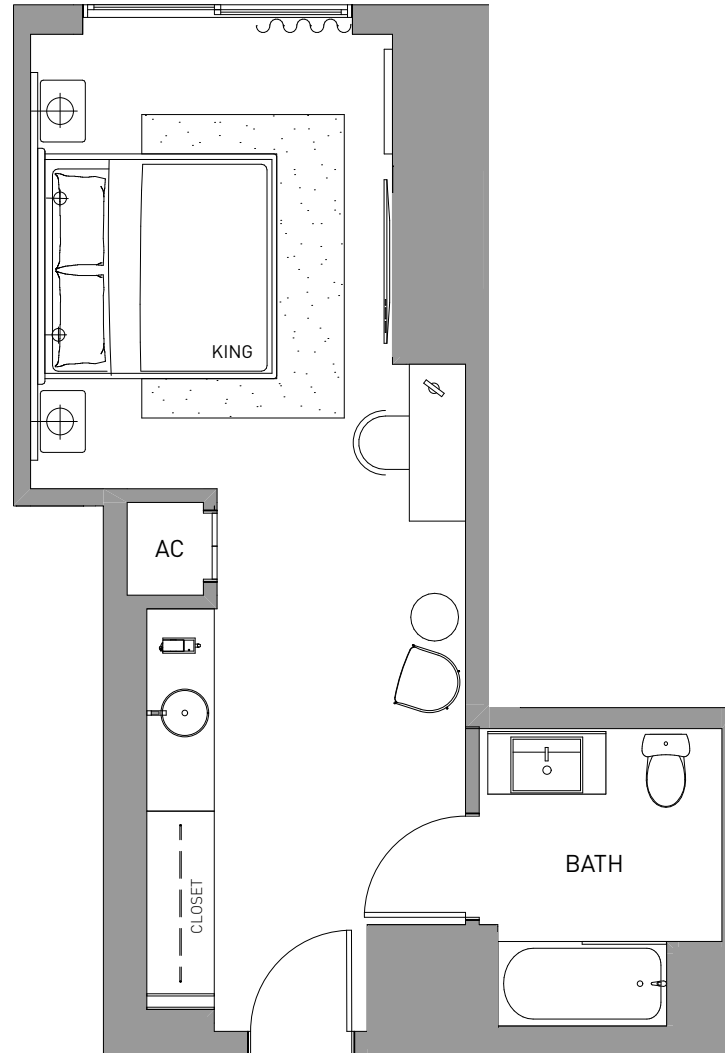
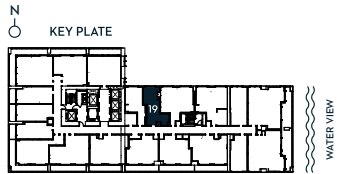




STUDIO 1 BATHROOM

LINE 19 FLOOR 16-23

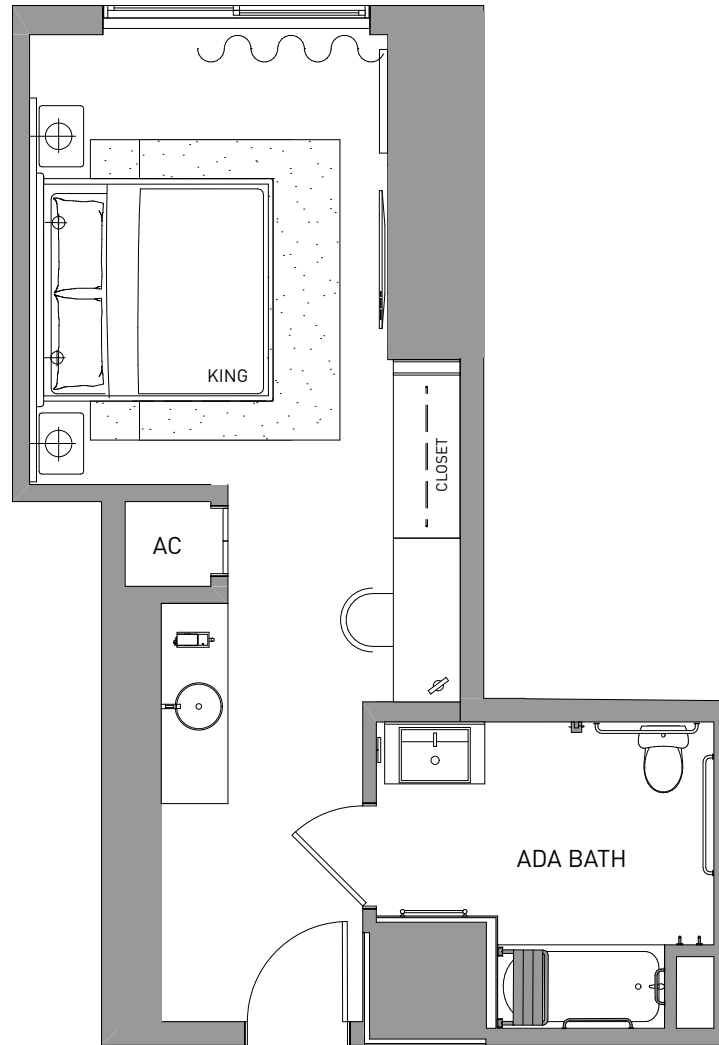
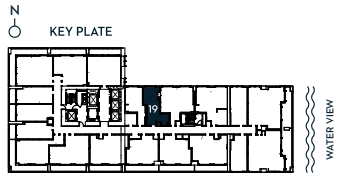
INTERIOR 441 SF 41 M²
TOTAL 441 SF 41 M²



STUDIO 1 BATHROOM

LINE 19 (ADA)
FLOOR 16-23

INTERIOR 441 SF 41 M²
TOTAL 441 SF 41 M²



DEVELOPED BY **SIXTH STREET MIAMI PARTNERS LLC**
SALES & MARKETING BY **CERVERA® REAL ESTATE • 1969**

GALEMIAMI.COM | 1 888 / 508 GALE [508 4253] | TEN MUSEUM PARK 1040 BISCAYNE BLVD, 3RD FLOOR MIAMI, FL 33132

Ⓞ GALE REPRESENTATIONS CANNOT BE RELIED UPON AS CORRECTLY STATING THE REPRESENTATIONS OF THE DEVELOPER. FOR CORRECT REPRESENTATIONS, MAKE REFERENCE TO THIS BROCHURE AND TO THE DOCUMENTS REQUIRED BY SECTION 718.503, FLORIDA STATUTES, TO BE FURNISHED BY A DEVELOPER TO A BUYER OR LESSEE. THIS IS NOT INTENDED TO BE AN OFFER TO SELL, OR SOLICITATION TO BUY, CONDOMINIUM UNITS TO RESIDENTS OF ANY JURISDICTION WHERE PROHIBITED BY LAW, AND YOUR ELIGIBILITY FOR PURCHASE WILL DEPEND UPON YOUR STATE OF RESIDENCY. THE OFFERING IS MADE ONLY BY THE PROSPECTUS FOR THE CONDOMINIUM AND NO STATEMENT SHOULD BE RELIED UPON IF NOT MADE IN THE PROSPECTUS. STATED INTERIOR SQUARE FOOTAGE IS MEASURED TO THE EXTERIOR FACE OF EXTERIOR WALLS AND TO THE CENTERLINE OF INTERIOR DEMISING WALLS OR TO THE EXTERIOR FACE OF WALLS ADJOINING CORRIDORS OR OTHER COMMON ELEMENTS OR SHARED FACILITIES WITHOUT EXCLUDING AREAS THAT MAY BE OCCUPIED BY COLUMNS OR OTHER STRUCTURAL COMPONENTS. THIS METHOD OF MEASUREMENT VARIES FROM, AND IS LARGER THAN, THE DIMENSIONS THAT WOULD BE DETERMINED BY USING THE DESCRIPTION AND THE DEFINITION OF THE UNIT SET FORTH IN THE DECLARATION (WHICH GENERALLY ONLY INCLUDES THE INTERIOR AIRSPACE BETWEEN THE PERIMETER WALLS AND EXCLUDES STRUCTURAL COMPONENTS). FOR REFERENCE, THE AREA OF THE UNIT, DETERMINED IN ACCORDANCE WITH THE UNIT BOUNDARIES SET FORTH IN THE DECLARATION IS SET FORTH IN EXHIBIT 3 TO THE DECLARATION. ALL DIMENSIONS ARE APPROXIMATE AND MAY VARY WITH ACTUAL CONSTRUCTION.

STUDIO 1 BATHROOM

LINE 20 FLOOR 16-23

INTERIOR 410 SF 38 M²
TOTAL 410 SF 38 M²

