

INTERIOR
5,058 SF
EXTERIOR
1,065 SF
4 BEDROOMS
5.5 BATHROOMS
FAMILY ROOM
WINDOWED SERVICE ROOM

INTERIOR
3,872 SF
EXTERIOR
525 SF
3 BEDROOMS
4.5 BATHROOMS
DEN
SERVICE ROOM

INTERIOR
3,872 SF
EXTERIOR
525 SF
3 BEDROOMS
4.5 BATHROOMS
DEN
SERVICE ROOM

INTERIOR
4,428 SF
EXTERIOR
710 SF
4 BEDROOMS
5.5 BATHROOMS
SERVICE ROOM

INTERIOR
3,976 SF
EXTERIOR
580 SF
3 BEDROOMS
4.5 BATHROOMS
SERVICE ROOM

INTERIOR
4,980 SF
EXTERIOR
880 SF
5 BEDROOMS
6.5 BATHROOMS
SERVICE ROOM



N 25° 45.8255



W 80° 8.4428

CABANA 06

INTERIOR
1,025 SF

EXTERIOR
1,025 SF

*

1 BEDROOM
1.5 BATHROOMS
PRIVATE ROOF DECK
SUMMER KITCHEN
PLUNGE POOL



THE RESIDENCES

SIX FISHER ISLAND

⑥

6 Fisher Island Drive, Fisher Island, FL 33109
305.873.3852 — 6-fisherisland.com

DouglasElliman
Development Marketing

The dimensions stated for this unit floor plan are approximate because there are various recognized methods for calculating the square footage of a unit. The square footage stated here is calculated from the exterior boundaries of the exterior walls to the centerline of interior demising walls without deductions for cutouts, curves, or architectural features. This method typically results in quoted dimensions greater than the dimensions that would be determined by using other accepted methods. The definition of "Unit" and the calculation method to be relied upon is set forth by the Developer in Developer's prospectus and the method set forth in the Developer's prospectus may result in a square footage calculation less than the method used here. Consult the Developer's prospectus to learn Unit dimensions and what is offered with the Unit. Dimensions and unit configuration is not guaranteed and may change during construction. Depictions of furnishings, fixtures and other items of personal property are not included with purchase.



N 25° 45.8255



W 80° 8.4428

CABANA 06

INTERIOR
1,025 SF

EXTERIOR
1,025 SF

*

1 BEDROOM
1.5 BATHROOMS
PRIVATE ROOF DECK
SUMMER KITCHEN
PLUNGE POOL



THE RESIDENCES

SIX FISHER ISLAND

⑥

6 Fisher Island Drive, Fisher Island, FL 33109
305.873.3852 — 6-fisherisland.com

DouglasElliman
Development Marketing

The dimensions stated for this unit floor plan are approximate because there are various recognized methods for calculating the square footage of a unit. The square footage stated here is calculated from the exterior boundaries of the exterior walls to the centerline of interior demising walls without deductions for cutouts, curves, or architectural features. This method typically results in quoted dimensions greater than the dimensions that would be determined by using other accepted methods. The definition of "Unit" and the calculation method to be relied upon is set forth by the Developer in Developer's prospectus and the method set forth in the Developer's prospectus may result in a square footage calculation less than the method used here. Consult the Developer's prospectus to learn Unit dimensions and what is offered with the Unit. Dimensions and unit configuration is not guaranteed and may change during construction. Depictions of furnishings, fixtures and other items of personal property are not included with purchase.



N 25° 45.8255



W 80° 8.4428

CABANA 06

INTERIOR
1,025 SF

EXTERIOR
1,025 SF

*

1 BEDROOM
1.5 BATHROOMS
PRIVATE ROOF DECK
SUMMER KITCHEN
PLUNGE POOL



THE RESIDENCES

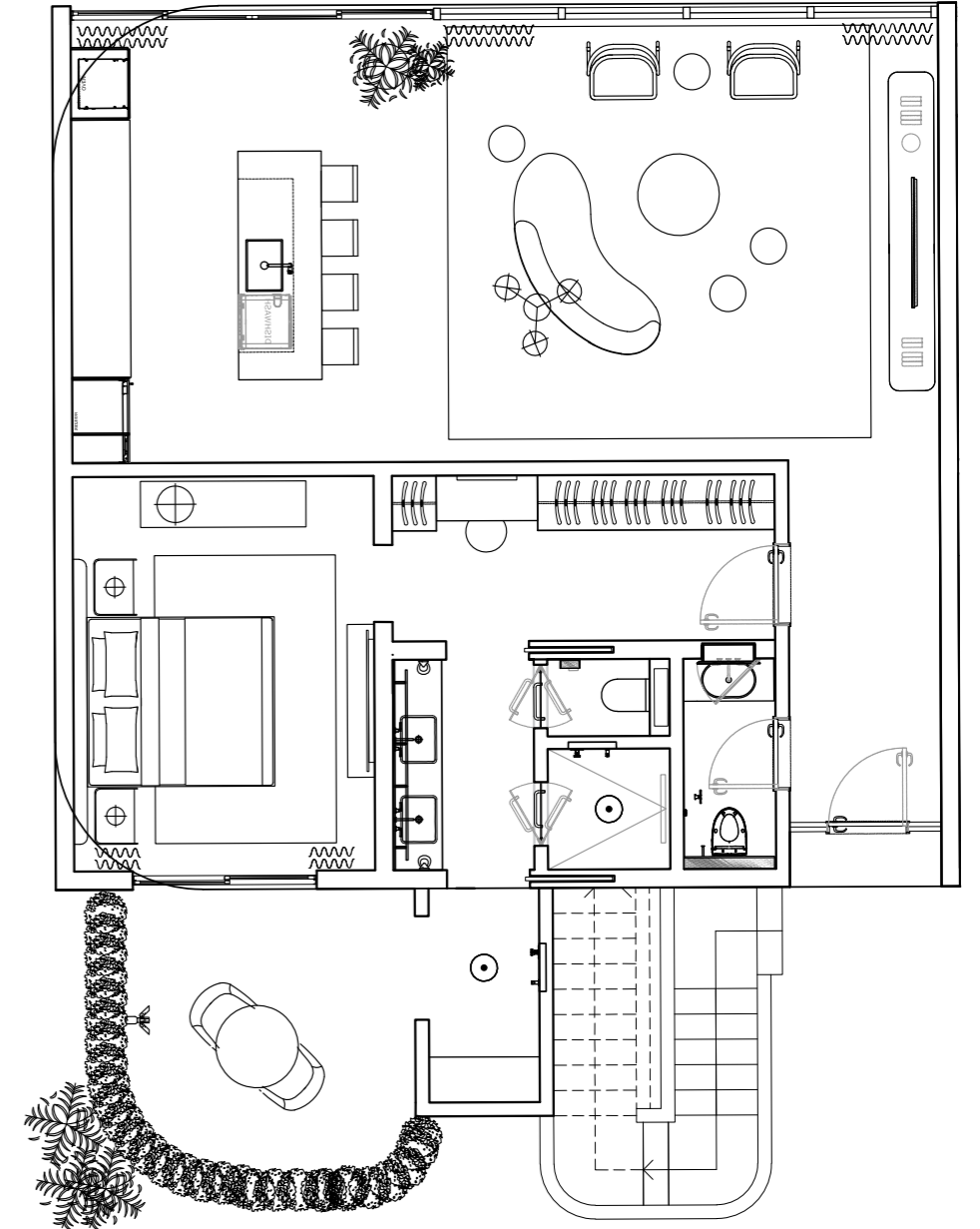
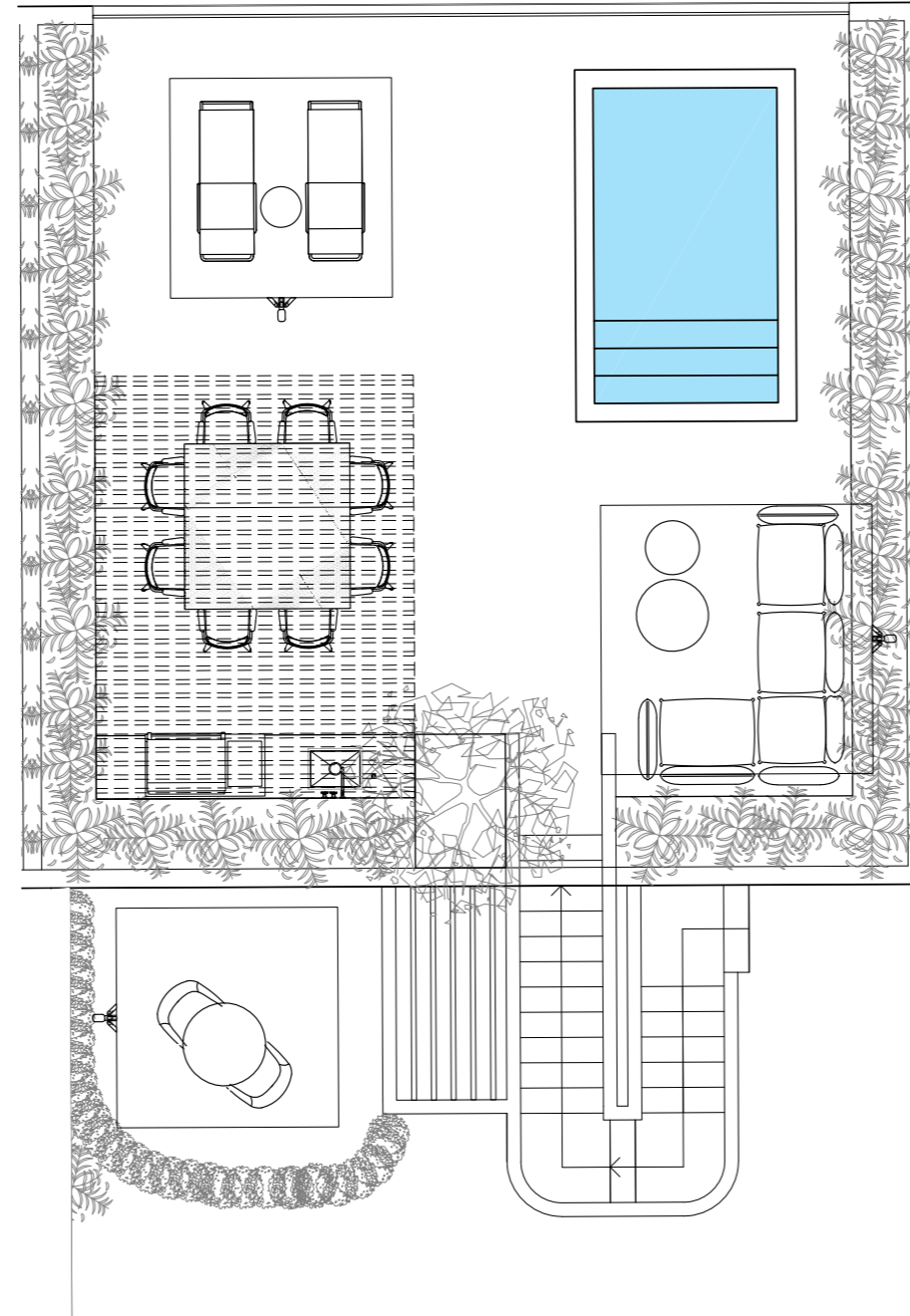
SIX FISHER ISLAND

⑥

6 Fisher Island Drive, Fisher Island, FL 33109
305.873.3852 — 6-fisherisland.com

DouglasElliman
Development Marketing

The dimensions stated for this unit floor plan are approximate because there are various recognized methods for calculating the square footage of a unit. The square footage stated here is calculated from the exterior boundaries of the exterior walls to the centerline of interior demising walls without deductions for cutouts, curves, or architectural features. This method typically results in quoted dimensions greater than the dimensions that would be determined by using other accepted methods. The definition of "Unit" and the calculation method to be relied upon is set forth by the Developer in Developer's prospectus and the method set forth in the Developer's prospectus may result in a square footage calculation less than the method used here. Consult the Developer's prospectus to learn Unit dimensions and what is offered with the Unit. Dimensions and unit configuration is not guaranteed and may change during construction. Depictions of furnishings, fixtures and other items of personal property are not included with purchase.



N 25° 45.8255



W 80° 8.4428

PENTHOUSE 01

MAIN LEVEL

INTERIOR TOTAL
15,570 SF

INTERIOR MAIN LEVEL
13,820 SF

EXTERIOR TOTAL
8,725 SF

EXTERIOR MAIN LEVEL
3,925 SF

*

8 BEDROOMS

9.5 BATHROOMS

PRIVATE ROOFTOP POOL DECK

POOL HOUSE WITH FULL KITCHEN

GUEST SUITE

SUMMER KITCHEN

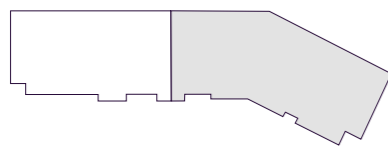
WINE ROOM

EXERCISE ROOM

SERVICE SUITE

GAME ROOM

THEATER



THE RESIDENCES

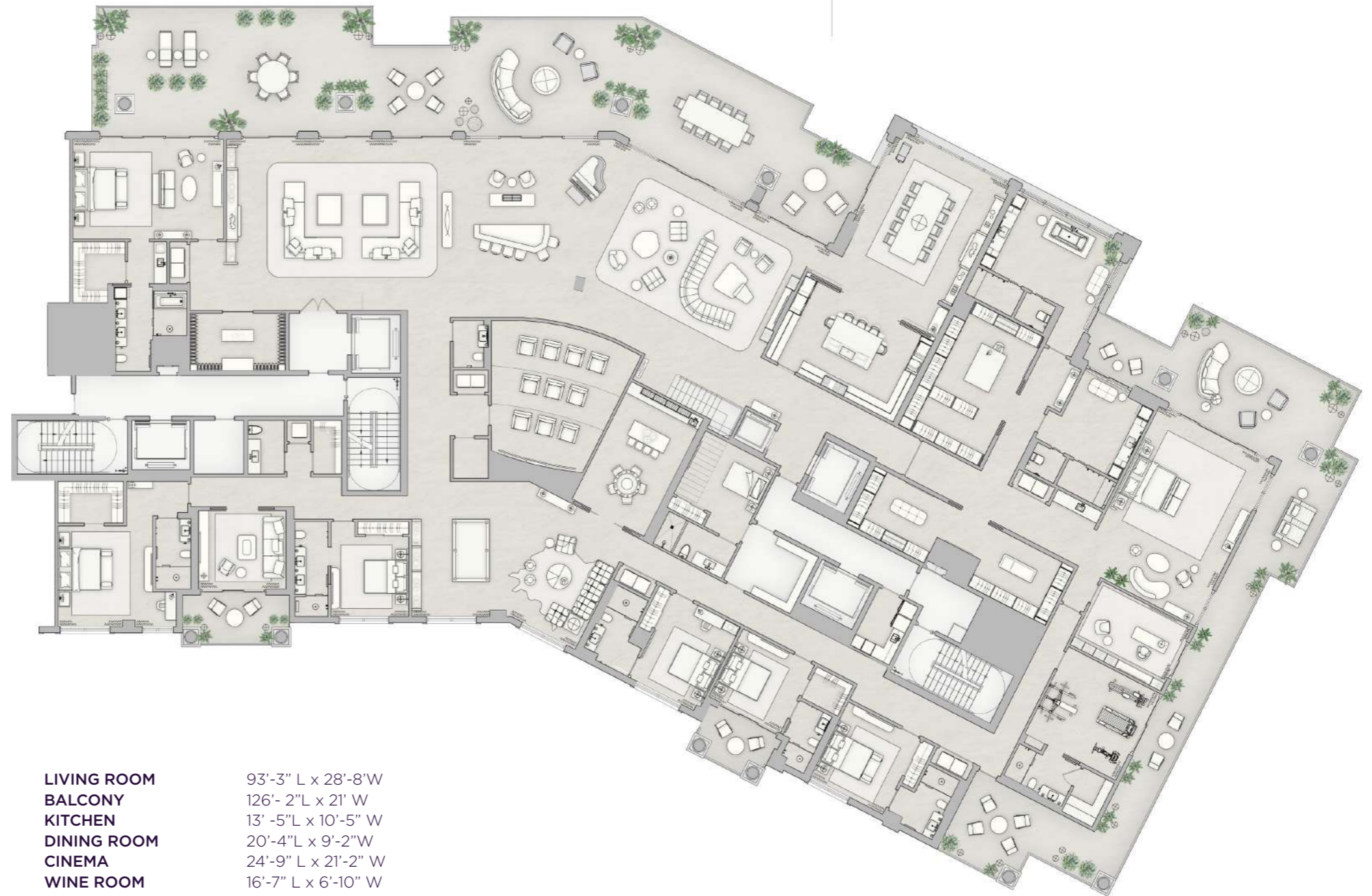
SIX FISHER ISLAND

⑥

6 Fisher Island Drive, Fisher Island, FL 33109
305.873.3852 — 6-fisherisland.com

Douglas Elliman
Development Marketing

The dimensions stated for this unit floor plan are approximate because there are various recognized methods for calculating the square footage of a unit. The square footage stated here is calculated from the exterior boundaries of the exterior walls to the centerline of interior demising walls without deductions for cutouts, curves, or architectural features. This method typically results in quoted dimensions greater than the dimensions that would be determined by using other accepted methods. The definition of "Unit" and the calculation method to be relied upon is set forth by the Developer in Developer's prospectus and the method set forth in the Developer's prospectus may result in a square footage calculation less than the method used here. Consult the Developer's prospectus to learn Unit dimensions and what is offered with the Unit. Dimensions and unit configuration is not guaranteed and may change during construction. Depictions of furnishings, fixtures and other items of personal property are not included with purchase.



LIVING ROOM 93'-3" L x 28'-8" W
BALCONY 126'-2" L x 21' W
KITCHEN 13'-5" L x 10'-5" W
DINING ROOM 20'-4" L x 9'-2" W
CINEMA 24'-9" L x 21'-2" W
WINE ROOM 16'-7" L x 6'-10" W
GAME ROOM 18'-1" L x 13' W
EXERCISE ROOM 15'-8" L x 15'-1" W
FAMILY ROOM 14' L x 12'-5" W

PRIMARY BEDROOM 28'-6" L x 20'-9" W
HER BATHROOM 19'-8" L x 18'-5" W
HIS BATHROOM 18'-8" L x 15' W
HER CLOSET 35'-9" L x 10'-1" W
HIS CLOSET 23' L x 14'-4" W

BEDROOM 2 26' L x 24'-5" W
BEDROOM 3 23'-1" L x 10'-4" W
BEDROOM 4 19' L x 15'-1" W
BEDROOM 5 21'-7" L x 15'-6" W
BEDROOM 6 19'-10" L x 12'-7" W
BEDROOM 7 22'-6" L x 13'-42" W

N 25° 45.8255



W 80° 8.4428

PENTHOUSE 01

UPPER LEVEL

INTERIOR TOTAL
15,570 SF

INTERIOR UPPER LEVEL
1,750 SF

EXTERIOR TOTAL
8,725 SF

EXTERIOR UPPER LEVEL
4,800 SF

*

8 BEDROOMS

9.5 BATHROOMS

PRIVATE ROOFTOP POOL DECK

POOL HOUSE WITH FULL KITCHEN

GUEST SUITE

SUMMER KITCHEN

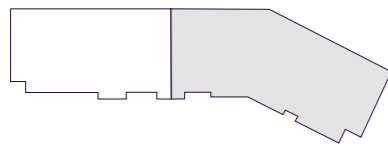
WINE ROOM

EXERCISE ROOM

SERVICE SUITE

GAME ROOM

THEATER



THE RESIDENCES

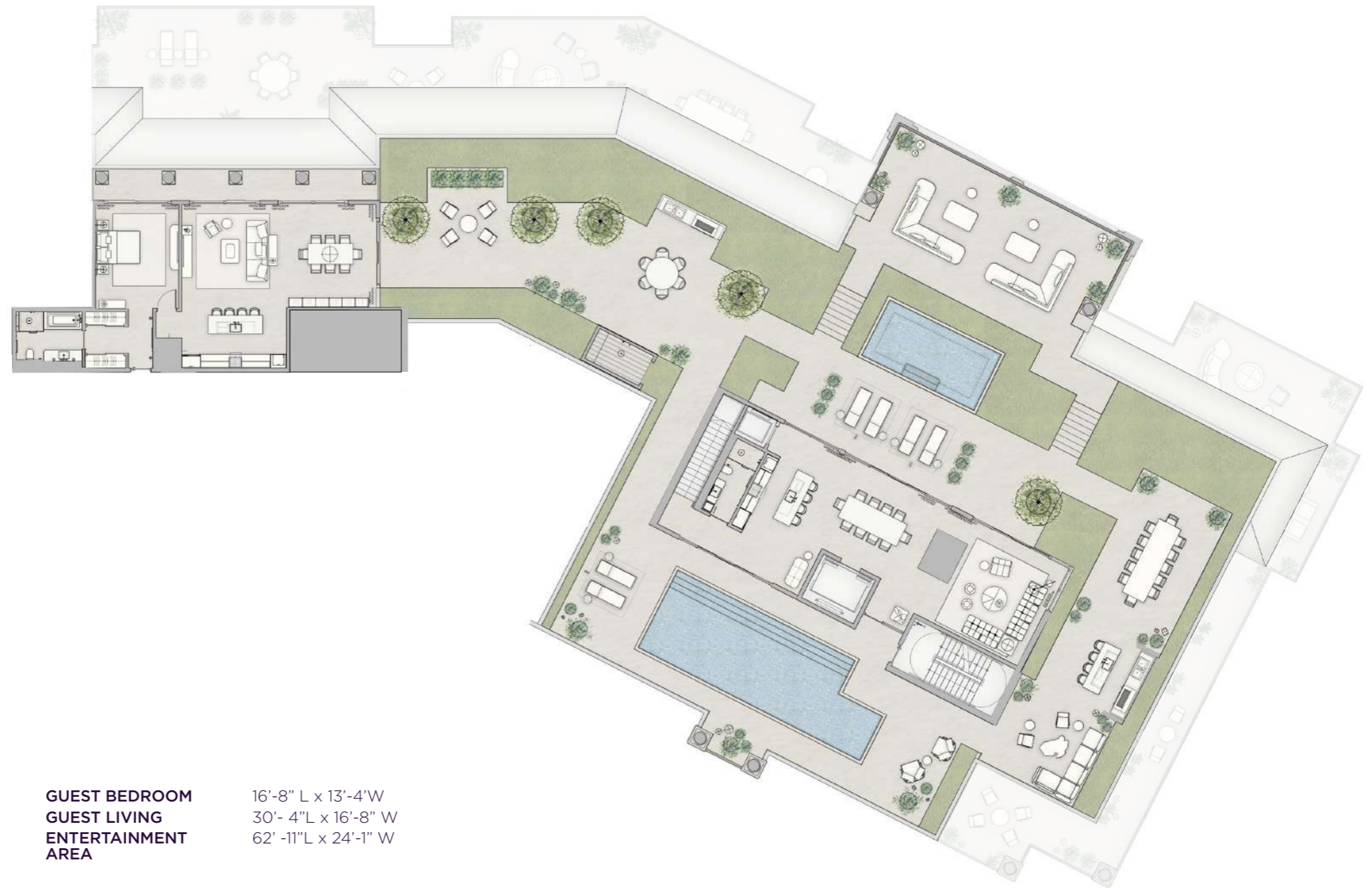
SIX FISHER ISLAND

⑥

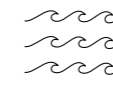
6 Fisher Island Drive, Fisher Island, FL 33109
305.873.3852 — 6-fisherisland.com

Douglas Elliman
Development Marketing

The dimensions stated for this unit floor plan are approximate because there are various recognized methods for calculating the square footage of a unit. The square footage stated here is calculated from the exterior boundaries of the exterior walls to the centerline of interior demising walls without deductions for cutouts, curves, or architectural features. This method typically results in quoted dimensions greater than the dimensions that would be determined by using other accepted methods. The definition of "Unit" and the calculation method to be relied upon is set forth by the Developer in Developer's prospectus and the method set forth in the Developer's prospectus may result in a square footage calculation less than the method used here. Consult the Developer's prospectus to learn Unit dimensions and what is offered with the Unit. Dimensions and unit configuration is not guaranteed and may change during construction. Depictions of furnishings, fixtures and other items of personal property are not included with purchase.



GUEST BEDROOM 16'-8" L x 13'-4" W
GUEST LIVING 30'-4" L x 16'-8" W
ENTERTAINMENT AREA 62'-11" L x 24'-1" W



N 25° 45.8255



W 80° 8.4428

PENTHOUSE 02

MAIN LEVEL

INTERIOR TOTAL
10,710 SF

INTERIOR MAIN LEVEL
9,810 SF

EXTERIOR TOTAL
7,220 SF

EXTERIOR MAIN LEVEL
3,450 SF

*

5 BEDROOMS

7.5 BATHROOMS

PRIVATE ROOFTOP POOL DECK

POOL HOUSE WITH FULL KITCHEN

SUMMER KITCHEN

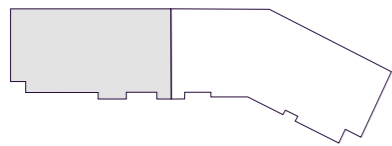
WINE ROOM

EXERCISE ROOM

SERVICE SUITE

GAME ROOM

THEATER



THE RESIDENCES

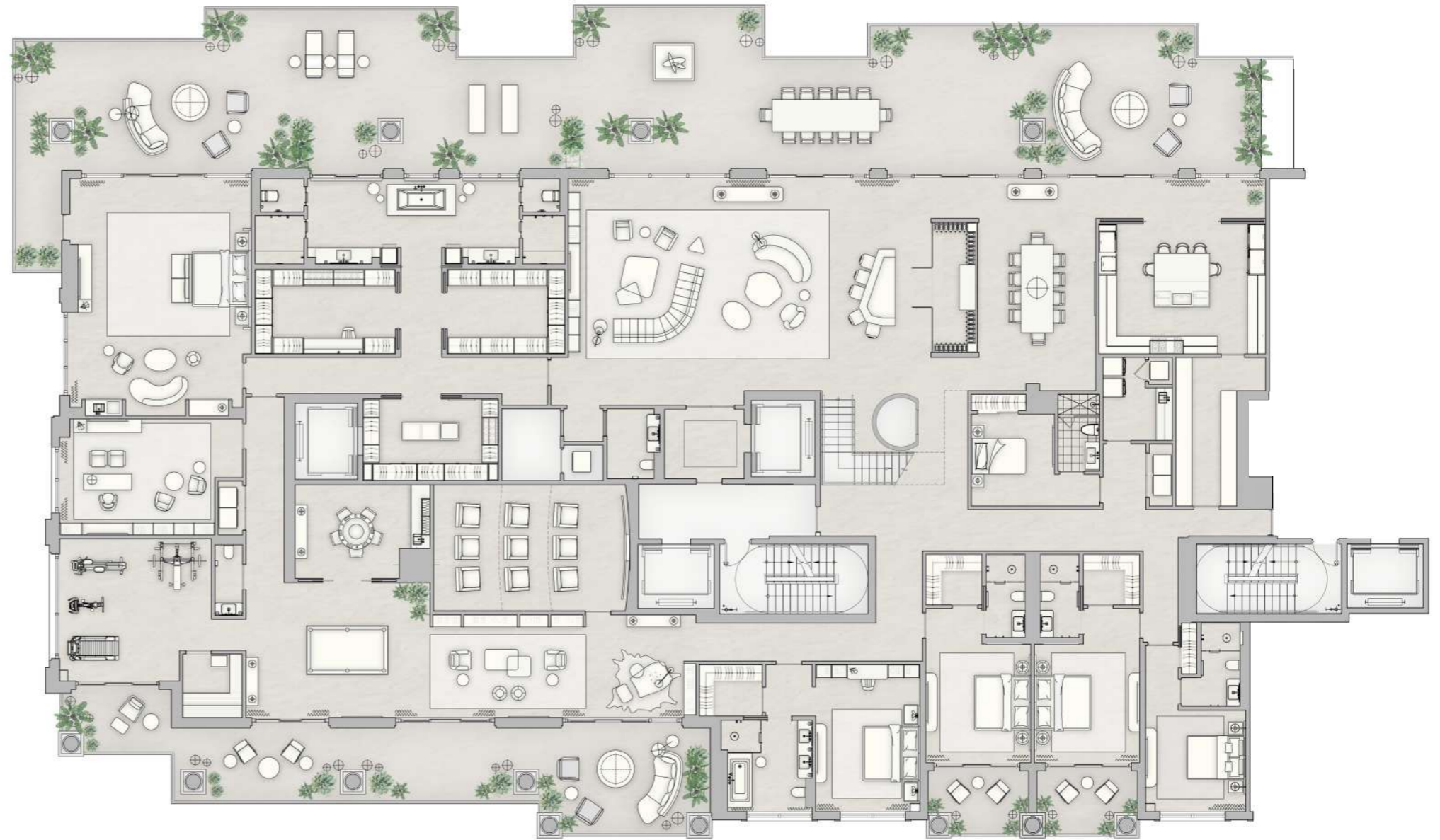
SIX FISHER ISLAND

⑥

6 Fisher Island Drive, Fisher Island, FL 33109
305.873.3852 — 6-fisherisland.com

Douglas Elliman
Development Marketing

The dimensions stated for this unit floor plan are approximate because there are various recognized methods for calculating the square footage of a unit. The square footage stated here is calculated from the exterior boundaries of the exterior walls to the centerline of interior demising walls without deductions for cutouts, curves, or architectural features. This method typically results in quoted dimensions greater than the dimensions that would be determined by using other accepted methods. The definition of "Unit" and the calculation method to be relied upon is set forth by the Developer in Developer's prospectus and the method set forth in the Developer's prospectus may result in a square footage calculation less than the method used here. Consult the Developer's prospectus to learn Unit dimensions and what is offered with the Unit. Dimensions and unit configuration is not guaranteed and may change during construction. Depictions of furnishings, fixtures and other items of personal property are not included with purchase.



LIVING ROOM 44'-5" L x 22' W
BALCONY 156'-6" L x 20'-2" W
KITCHEN 20' -9" L x 15'-10" W
DINING ROOM 26'-1" L x 14'-5" W
CINEMA 23'-6" L x 15'-5" W
WINE ROOM 15'-10" L x 5'-5" W
GAME ROOM 16'-6" L x 11'-5" W
EXERCISE ROOM 22' L x 17'-5" W

PRIMARY BEDROOM 29'-2" L x 22' W
PRIMARY BATHROOM 37'-11" L x 10'-4" W
HER CLOSET 37'-11" L x 10'-4" W
HIS CLOSET 16'-6" L x 10' W

BEDROOM 2 25' L x 19'-5" W
BEDROOM 3 25'-8" L x 13'-1" W
BEDROOM 4 25'-8" L x 13'-1" W
BEDROOM 5 23'-1" L x 12'-3" W

N 25° 45.8255



*

W 80° 8.4428

PENTHOUSE 02

UPPER LEVEL

INTERIOR TOTAL
10,710 SF

INTERIOR UPPER LEVEL
900 SF

EXTERIOR TOTAL
7,220 SF

EXTERIOR UPPER LEVEL
3,770 SF

*

5 BEDROOMS

7.5 BATHROOMS

PRIVATE ROOFTOP POOL DECK

POOL HOUSE WITH FULL KITCHEN

SUMMER KITCHEN

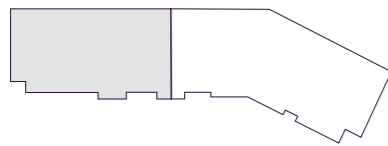
WINE ROOM

EXCERCISE ROOM

SERVICE SUITE

GAME ROOM

THEATER



THE RESIDENCES

SIX FISHER ISLAND

⑥

6 Fisher Island Drive, Fisher Island, FL 33109
305.873.3852 — 6-fisherisland.com

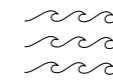
Douglas Elliman
Development Marketing

The dimensions stated for this unit floor plan are approximate because there are various recognized methods for calculating the square footage of a unit. The square footage stated here is calculated from the exterior boundaries of the exterior walls to the centerline of interior demising walls without deductions for cutouts, curves, or architectural features. This method typically results in quoted dimensions greater than the dimensions that would be determined by using other accepted methods. The definition of "Unit" and the calculation method to be relied upon is set forth by the Developer in Developer's prospectus and the method set forth in the Developer's prospectus may result in a square footage calculation less than the method used here. Consult the Developer's prospectus to learn Unit dimensions and what is offered with the Unit. Dimensions and unit configuration is not guaranteed and may change during construction. Depictions of furnishings, fixtures and other items of personal property are not included with purchase.



**GUEST SUITE
ENTERTAINMENT
AREA**

39'-4" L x 27'-6" W
43' L x 15'-8" W



N 25° 45.8255



W 80° 8.4428

RESIDENCE 01

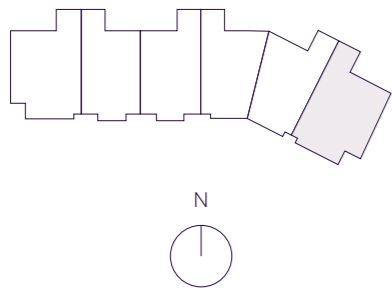
INTERIOR EXTERIOR
 4,980 F² 880 F²
 462 M² 81 M²

TOTAL
 5,860 F²
 543 M²

*

- 5 BEDROOMS
- 6 BATHROOMS
- 1 POWDER ROOM
- FAMILY ROOM
- SERVICE SUITE

OCEAN VIEW



THE RESIDENCES

SIX FISHER ISLAND

⑥

6 Fisher Island Drive, Fisher Island, FL 33109
 305.873.3852 — 6-fisherisland.com

DouglasElliman
 Development Marketing

The dimensions stated for this unit floor plan are approximate because there are various recognized methods for calculating the square footage of a unit. The square footage stated here is calculated from the exterior boundaries of the exterior walls to the centerline of interior demising walls without deductions for cutouts, curves, or architectural features. This method typically results in quoted dimensions greater than the dimensions that would be determined by using other accepted methods. The definition of "Unit" and the calculation method to be relied upon is set forth by the Developer in Developer's prospectus and the method set forth in the Developer's prospectus may result in a square footage calculation less than the method used here. Consult the Developer's prospectus to learn Unit dimensions and what is offered with the Unit. Dimensions and unit configuration is not guaranteed and may change during construction. Depictions of furnishings, fixtures and other items of personal property are not included with purchase.

PRIMARY BEDROOM
 20'-1" x 20'-1"
 BALCONY
 16'-6" x 48'-1"

HER WARDROBE
 14'-1" x 12'-11"

HER BATHROOM
 17'-2" x 13'-11"

LIVING ROOM
 32'-3" x 29'-6"

HIS WARDROBE
 8'-10" x 12'-11"

HIS BATHROOM
 12'-3" x 13'-11"

KITCHEN
 13'-5" x 22'-2"

BEDROOM 2
 17'-6" x 13'-1"

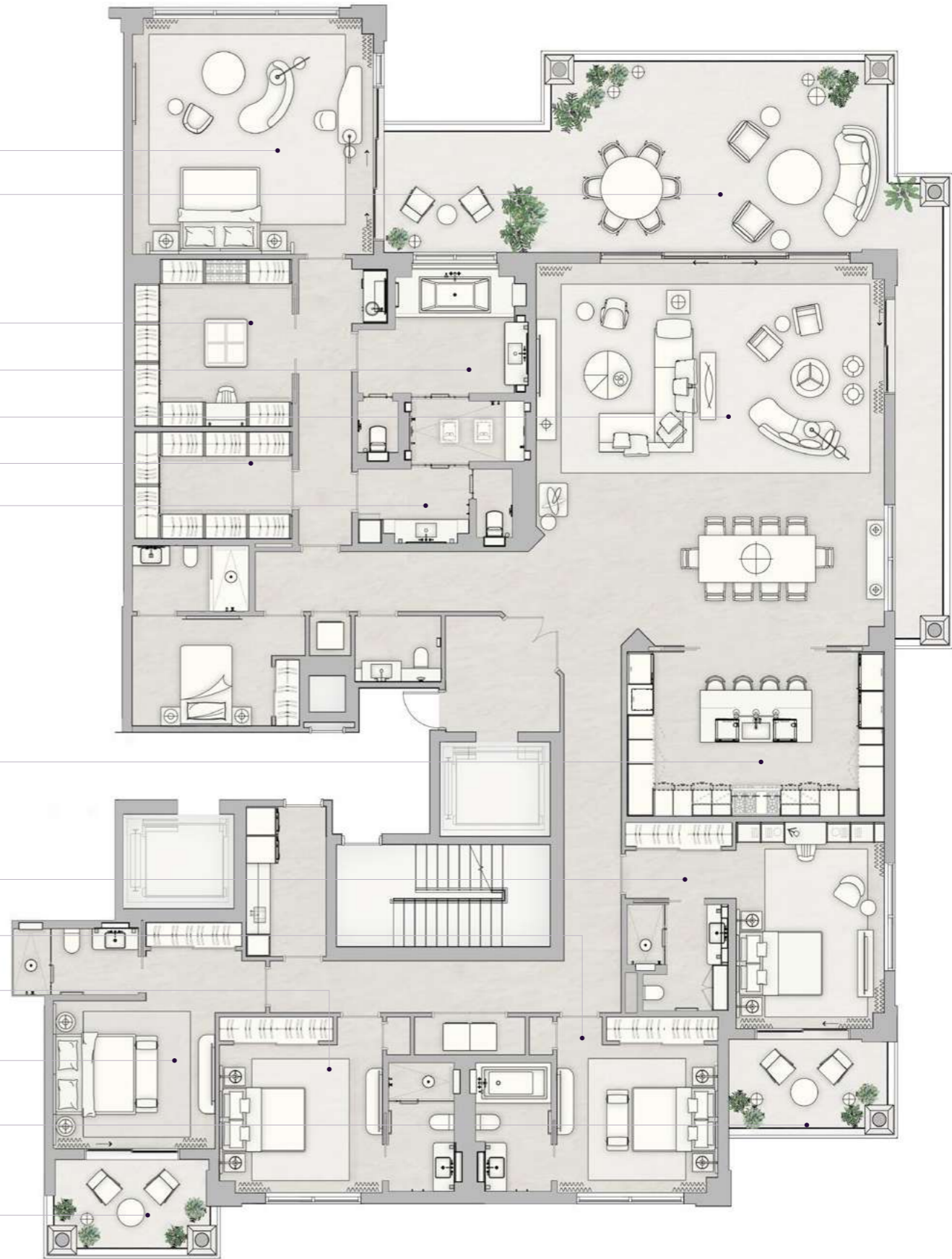
BEDROOM 3
 12'-6" x 14'-6"

BEDROOM 4
 12'-6" x 14'-6"

BEDROOM 5
 12'-7" x 13'-6"

BALCONY
 8'-6" x 13'-11"

BALCONY
 8'-6" x 12'-4"



N 25° 45.8255



W 80° 8.4428

RESIDENCE 02

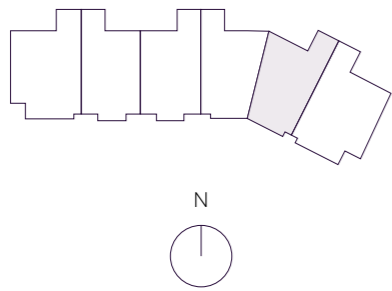
INTERIOR	EXTERIOR
3,976 F ²	580 F ²
369 M ²	53 M ²

TOTAL
4,556 F²
422 M²

*

- 3 BEDROOMS
- 4 BATHROOMS
- 1 POWDER ROOM
- FAMILY ROOM
- SERVICE SUITE

OCEAN VIEW



THE RESIDENCES

SIX FISHER ISLAND

⑥

6 Fisher Island Drive, Fisher Island, FL 33109
305.873.3852 — 6-fisherisland.com

Douglas Elliman
Development Marketing

The dimensions stated for this unit floor plan are approximate because there are various recognized methods for calculating the square footage of a unit. The square footage stated here is calculated from the exterior boundaries of the exterior walls to the centerline of interior demising walls without deductions for cutouts, curves, or architectural features. This method typically results in quoted dimensions greater than the dimensions that would be determined by using other accepted methods. The definition of "Unit" and the calculation method to be relied upon is set forth by the Developer in Developer's prospectus and the method set forth in the Developer's prospectus may result in a square footage calculation less than the method used here. Consult the Developer's prospectus to learn Unit dimensions and what is offered with the Unit. Dimensions and unit configuration is not guaranteed and may change during construction. Depictions of furnishings, fixtures and other items of personal property are not included with purchase.

- FAMILY ROOM
18'-8" x 20'
- BALCONY
16'-6" x 43'-3"
- PRIMARY BEDROOM
14'-1" x 23'-6"
- KITCHEN
21'-6" x 11'-6"
- LIVING ROOM
30'-7" x 14'-6"
- HER WARDROBE
9' x 13'-8"
- HIS WARDROBE
9'-11" x 13'-4"
- PRIMARY BATHROOM
15'-4" x 17'-3"
- BEDROOM 2
13' x 14'-8"
- BEDROOM 3
13'-6" x 14'-5"



N 25° 45.8255



*

W 80° 8.4428

RESIDENCE 02C

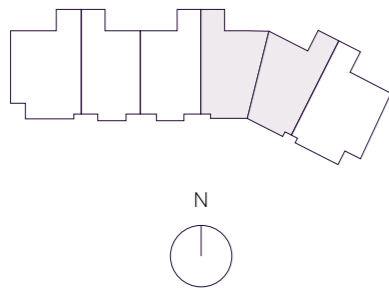
INTERIOR	EXTERIOR
8,404 F ²	1,290 F ²
780 M ²	119 M ²

TOTAL
9,694 F²
899 M²

*

- 6 BEDROOMS
- 7 BATHROOMS
- 1 POWDER ROOM
- FAMILY ROOM
- EXERCISE ROOM
- OFFICE
- WINE ROOM
- SERVICE SUITE

OCEAN VIEW



THE RESIDENCES

SIX FISHER ISLAND

⑥

6 Fisher Island Drive, Fisher Island, FL 33109
305.873.3852 — 6-fisherisland.com

DouglasElliman
Development Marketing

The dimensions stated for this unit floor plan are approximate because there are various recognized methods for calculating the square footage of a unit. The square footage stated here is calculated from the exterior boundaries of the exterior walls to the centerline of interior demising walls without deductions for cutouts, curves, or architectural features. This method typically results in quoted dimensions greater than the dimensions that would be determined by using other accepted methods. The definition of "Unit" and the calculation method to be relied upon is set forth by the Developer in Developer's prospectus and the method set forth in the Developer's prospectus may result in a square footage calculation less than the method used here. Consult the Developer's prospectus to learn Unit dimensions and what is offered with the Unit. Dimensions and unit configuration is not guaranteed and may change during construction. Depictions of furnishings, fixtures and other items of personal property are not included with purchase.

PRIMARY BEDROOM
23'-1" x 20'-1"

BALCONY
15'-9" x 88'-10"

HER BATHROOM
17'-7" x 14'-11"

FAMILY ROOM
25'-11" x 20'-1"

GREAT ROOM
29'-5" x 64'-5"

HIS BATHROOM
12'-3" x 14'-9"

HER WARDROBE
14'-10" x 18'-6"

HIS WARDROBE
17'-5" x 14'-4"

KITCHEN
16'-2" x 22'

WINE ROOM
5'-3" x 15'-11"

OFFICE
15'-7" x 10'-3"

EXERCISE ROOM
10'-11" x 28'-11"

BEDROOM 2
13'-6" x 14'-5"

BEDROOM 3
14'-6" x 14'-8"

BEDROOM 4
13' x 14'-5"

BEDROOM 5
12' x 13'-10"

BALCONY
8'-6" x 17'-2"

BEDROOM 6
17'-9" x 15'-8"



N 25° 45.8255



W 80° 8.4428

RESIDENCE 03

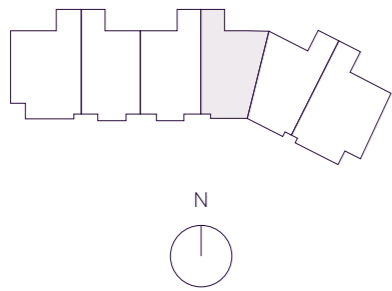
INTERIOR	EXTERIOR
4,428 F ²	710 F ²
411 M ²	65 M ²

TOTAL
5,138 F²
476 M²

*

4 BEDROOMS
5 BATHROOMS
1 POWDER ROOM
FAMILY ROOM
SERVICE SUITE

OCEAN VIEW



THE RESIDENCES

SIX FISHER ISLAND

⑥

6 Fisher Island Drive, Fisher Island, FL 33109
305.873.3852 — 6-fisherisland.com

Douglas Elliman
Development Marketing

The dimensions stated for this unit floor plan are approximate because there are various recognized methods for calculating the square footage of a unit. The square footage stated here is calculated from the exterior boundaries of the exterior walls to the centerline of interior demising walls without deductions for cutouts, curves, or architectural features. This method typically results in quoted dimensions greater than the dimensions that would be determined by using other accepted methods. The definition of "Unit" and the calculation method to be relied upon is set forth by the Developer in Developer's prospectus and the method set forth in the Developer's prospectus may result in a square footage calculation less than the method used here. Consult the Developer's prospectus to learn Unit dimensions and what is offered with the Unit. Dimensions and unit configuration is not guaranteed and may change during construction. Depictions of furnishings, fixtures and other items of personal property are not included with purchase.

- BALCONY
15'-4" x 43'-3"
- FAMILY ROOM
16'-10" x 20'-1"
- PRIMARY BEDROOM
15'-2" x 22'-10"
- KITCHEN
21'-1" x 11'-6"
- LIVING ROOM
29'-5" x 15'-4"
- HER WARDROBE
14'-6" x 9'
- HIS WARDROBE
12'-5" x 9'-10"
- PRIMARY BATHROOM
15'-4" x 17'-3"
- BEDROOM 2
17'-9" x 15'-9"
- BEDROOM 3
13' x 14'-5"
- BEDROOM 4
12' x 13'-10"
- BALCONY
8'-6" x 17'-2"



N 25° 45.8255



W 80° 8.4428

RESIDENCE 04

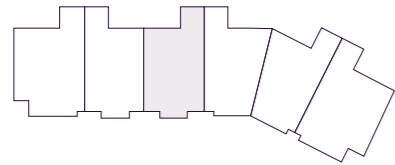
INTERIOR	EXTERIOR
3,872 F ²	525 F ²
359 M ²	48 M ²

TOTAL
4,397 F²
407 M²

*

3 BEDROOMS
4.5 BATHROOMS
FAMILY ROOM
SERVICE ROOM
DEN

OCEAN VIEW



THE RESIDENCES

SIX FISHER ISLAND

⑥

6 Fisher Island Drive, Fisher Island, FL 33109
305.873.3852 — 6-fisherisland.com

Douglas Elliman
Development Marketing

The dimensions stated for this unit floor plan are approximate because there are various recognized methods for calculating the square footage of a unit. The square footage stated here is calculated from the exterior boundaries of the exterior walls to the centerline of interior demising walls without deductions for cutouts, curves, or architectural features. This method typically results in quoted dimensions greater than the dimensions that would be determined by using other accepted methods. The definition of "Unit" and the calculation method to be relied upon is set forth by the Developer in Developer's prospectus and the method set forth in the Developer's prospectus may result in a square footage calculation less than the method used here. Consult the Developer's prospectus to learn Unit dimensions and what is offered with the Unit. Dimensions and unit configuration is not guaranteed and may change during construction. Depictions of furnishings, fixtures and other items of personal property are not included with purchase.

FAMILY ROOM
16'-9" x 20'-1"

BALCONY
15' x 33'-7"

PRIMARY BEDROOM
14'-7" x 19"

KITCHEN
21'-1" x 12'-5"

LIVING ROOM
29'-5" x 15'-2"

HER CLOSET
10'-5" x 8'-2"

HIS CLOSET
10'-5" x 6'

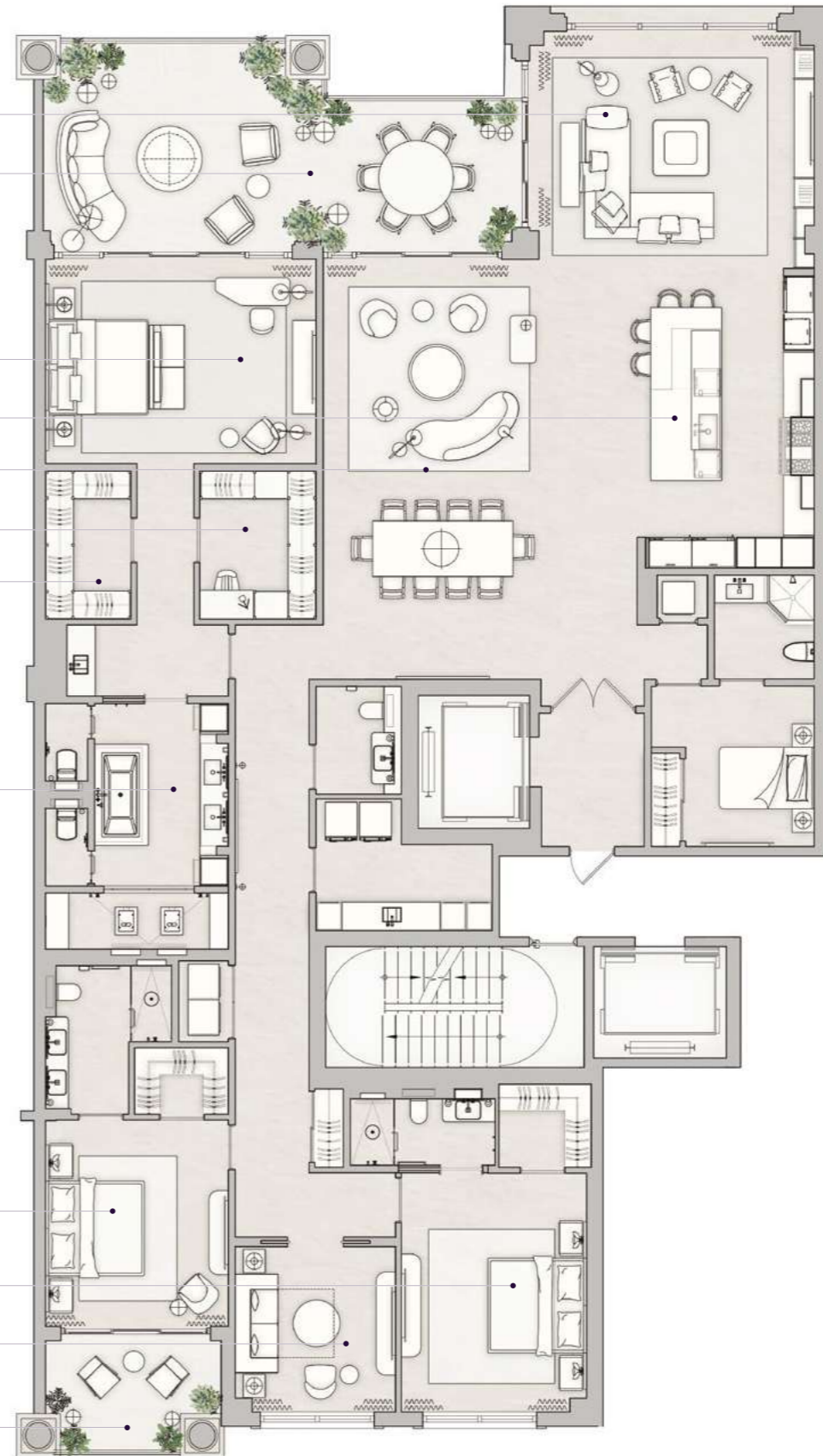
PRIMARY BATHROOM
14'-7" x 19"

BEDROOM 2
14'-8" x 12'-10"

BEDROOM 3
16'-9" x 13'

DEN
11'-7" x 11'-3"

BALCONY
8'-6" x 12'-4"



N 25° 45.8255



W 80° 8.4428

RESIDENCE 04C

INTERIOR 7,744 F²
719 M²

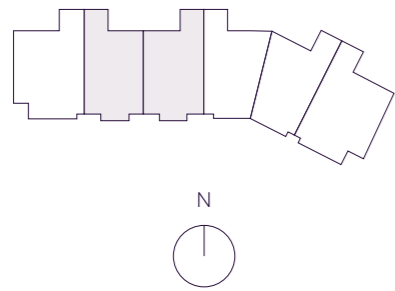
EXTERIOR 1,050 F²
97 M²

TOTAL 8,794 F²
816 M²

*

- 5 BEDROOMS
- 6 BATHROOMS
- 2 POWDER ROOMS
- FAMILY ROOM
- SERVICE SUITE
- WINE ROOM
- EXERCISE ROOM
- DEN

OCEAN VIEW



THE RESIDENCES
SIX FISHER ISLAND
⑥

6 Fisher Island Drive, Fisher Island, FL 33109
305.873.3852 — 6-fisherisland.com

Douglas Elliman
Development Marketing

The dimensions stated for this unit floor plan are approximate because there are various recognized methods for calculating the square footage of a unit. The square footage stated here is calculated from the exterior boundaries of the exterior walls to the centerline of interior demising walls without deductions for cutouts, curves, or architectural features. This method typically results in quoted dimensions greater than the dimensions that would be determined by using other accepted methods. The definition of "Unit" and the calculation method to be relied upon is set forth by the Developer in Developer's prospectus and the method set forth in the Developer's prospectus may result in a square footage calculation less than the method used here. Consult the Developer's prospectus to learn Unit dimensions and what is offered with the Unit. Dimensions and unit configuration is not guaranteed and may change during construction. Depictions of furnishings, fixtures and other items of personal property are not included with purchase.

- PRIMARY BEDROOM 23'-1" x 19'-4"
- BALCONY 15' x 67'-11"
- FAMILY ROOM 22'-8" x 19'
- HER BATHROOM 18'-5" x 15'-1"
- GREAT ROOM 29'-7" x 50'-7"
- KITCHEN 12'-10" x 17'-8"
- HER WARDROBE 17'-5" x 14'-4"
- HIS BATHROOM 12'-6" x 14'-9"
- HIS WARDROBE 14'-10" x 19'-8"
- WINE ROOM 6'-3" x 14'-5"
- EXERCISE ROOM 12'-3" x 26'-8"
- BEDROOM 2 16'-1" x 13'-8"
- BEDROOM 3 14'-8" x 12'-10"
- BEDROOM 4 14'-8" x 12'-10"
- BEDROOM 5 16'-9" x 13'
- DEN 11'-9" x 11'-3"
- BALCONY 8'-6" x 12'-4"
- BALCONY 8'-6" x 12'-4"



N 25° 45.8255



W 80° 8.4428

RESIDENCE 05

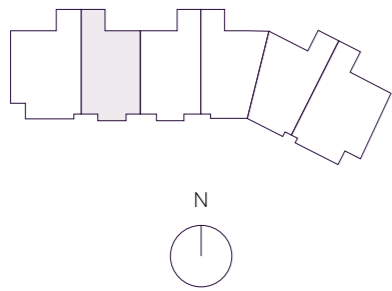
INTERIOR EXTERIOR
 3,872 F² 525 F²
 359 M² 48 M²

TOTAL
 4,397 F²
 407 M²

*

- 3 BEDROOMS
- 4 BATHROOMS
- 1 POWDER ROOM
- FAMILY ROOM
- SERVICE SUITE
- DEN

OCEAN VIEW



THE RESIDENCES

SIX FISHER ISLAND

⑥

6 Fisher Island Drive, Fisher Island, FL 33109
 305.873.3852 — 6-fisherisland.com

Douglas Elliman
 Development Marketing

The dimensions stated for this unit floor plan are approximate because there are various recognized methods for calculating the square footage of a unit. The square footage stated here is calculated from the exterior boundaries of the exterior walls to the centerline of interior demising walls without deductions for cutouts, curves, or architectural features. This method typically results in quoted dimensions greater than the dimensions that would be determined by using other accepted methods. The definition of "Unit" and the calculation method to be relied upon is set forth by the Developer in Developer's prospectus and the method set forth in the Developer's prospectus may result in a square footage calculation less than the method used here. Consult the Developer's prospectus to learn Unit dimensions and what is offered with the Unit. Dimensions and unit configuration is not guaranteed and may change during construction. Depictions of furnishings, fixtures and other items of personal property are not included with purchase.

- FAMILY ROOM
16'-9" x 20'-1"
- BALCONY
15' x 33'-7"
- PRIMARY BEDROOM
14'-7" x 19"
- KITCHEN
21'-1" x 12'-5"
- LIVING ROOM
29'-5" x 15'-2"
- HER CLOSET
10'-5" x 8'-2"
- HIS CLOSET
10'-5" x 6'
- PRIMARY BATHROOM
14'-7" x 19"
- BEDROOM 2
16'-9" x 13'
- BEDROOM 3
14'-8" x 12'-10"
- DEN
11'-7" x 11'-3"
- BALCONY
8'-6" x 12'-4"



N 25° 45.8255



W 80° 8.4428

RESIDENCE 05C

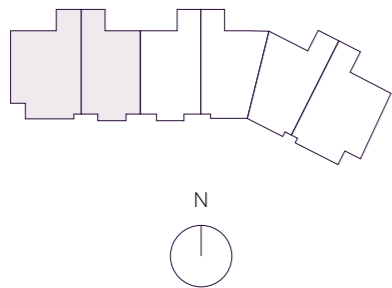
INTERIOR	EXTERIOR
8,930 F ²	1,590 F ²
829.62 M ²	147.72 M ²

TOTAL
10,520 F²
977.34 M²

*

- 6 BEDROOMS
- 8 BATHROOMS
- 2 POWDER ROOMS
- FAMILY ROOM
- LIBRARY
- OFFICE
- SERVICE SUITE
- WINE ROOM
- EXERCISE ROOM

OCEAN VIEW



THE RESIDENCES

SIX FISHER ISLAND

⑥

6 Fisher Island Drive, Fisher Island, FL 33109
305.873.3852 — 6-fisherisland.com

DouglasElliman
Development Marketing

The dimensions stated for this unit floor plan are approximate because there are various recognized methods for calculating the square footage of a unit. The square footage stated here is calculated from the exterior boundaries of the exterior walls to the centerline of interior demising walls without deductions for cutouts, curves, or architectural features. This method typically results in quoted dimensions greater than the dimensions that would be determined by using other accepted methods. The definition of "Unit" and the calculation method to be relied upon is set forth by the Developer in Developer's prospectus and the method set forth in the Developer's prospectus may result in a square footage calculation less than the method used here. Consult the Developer's prospectus to learn Unit dimensions and what is offered with the Unit. Dimensions and unit configuration is not guaranteed and may change during construction. Depictions of furnishings, fixtures and other items of personal property are not included with purchase.



N 25° 45.8255



*

W 80° 8.4428

RESIDENCE 06

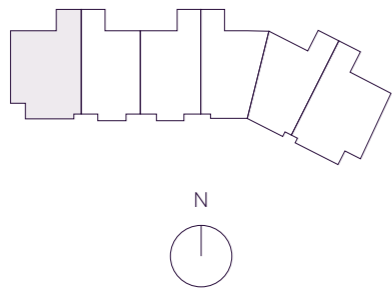
INTERIOR EXTERIOR
 5,058 F² 1,065 F²
 470 M² 98 M²

TOTAL
 6,123 F²
 568 M²

*

- 4 BEDROOMS
- 5 BATHROOMS
- 1 POWDER ROOM
- FAMILY ROOM
- WINDOWED SERVICE SUITE

OCEAN VIEW



THE RESIDENCES

SIX FISHER ISLAND

⑥

6 Fisher Island Drive, Fisher Island, FL 33109
 305.873.3852 — 6-fisherisland.com

Douglas Elliman
 Development Marketing

The dimensions stated for this unit floor plan are approximate because there are various recognized methods for calculating the square footage of a unit. The square footage stated here is calculated from the exterior boundaries of the exterior walls to the centerline of interior demising walls without deductions for cutouts, curves, or architectural features. This method typically results in quoted dimensions greater than the dimensions that would be determined by using other accepted methods. The definition of "Unit" and the calculation method to be relied upon is set forth by the Developer in Developer's prospectus and the method set forth in the Developer's prospectus may result in a square footage calculation less than the method used here. Consult the Developer's prospectus to learn Unit dimensions and what is offered with the Unit. Dimensions and unit configuration is not guaranteed and may change during construction. Depictions of furnishings, fixtures and other items of personal property are not included with purchase.

- BALCONY
15'-3" x 69'-5"
- PRIMARY BEDROOM
20'-3" x 17'-7"
- HER BATHROOM
17'-1" x 13'-3"
- LIVING ROOM
29'-2" x 30'-6"
- HIS BATHROOM
12'-1" x 13'-3"
- HER WARDROBE
14'-1" x 12'-5"
- HIS WARDROBE
8'-10" x 12'-5"
- KITCHEN
13'-6" x 19'-6"
- FAMILY ROOM
17'-0" x 22'-0"
- BEDROOM 2
18'-3" x 15'
- BEDROOM 3
12'-6" x 14'
- BALCONY
8'-6" x 13'-7"
- BEDROOM 4
11'-1" x 14'-8"
- BALCONY
8'-6" x 21'-0"



N 25° 45.8255



W 80° 8.4428

RESIDENCE 202

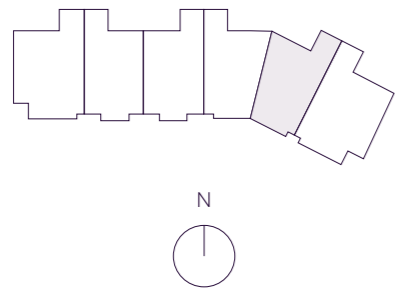
INTERIOR	EXTERIOR
5,212 F ²	3,150 F ²
484.21 M ²	292.65 M ²

TOTAL
8,362 F²
776.86 M²

*

- 4 BEDROOMS
- 5 BATHROOMS
- 1 POWDER ROOM
- PRIVATE POOL DECK
- SUMMER KITCHEN
- FAMILY ROOM
- EXERCISE ROOM
- SERVICE SUITE

OCEAN VIEW



THE RESIDENCES

SIX FISHER ISLAND

⑥

6 Fisher Island Drive, Fisher Island, FL 33109
305.873.3852 — 6-fisherisland.com

Douglas Elliman
Development Marketing

The dimensions stated for this unit floor plan are approximate because there are various recognized methods for calculating the square footage of a unit. The square footage stated here is calculated from the exterior boundaries of the exterior walls to the centerline of interior demising walls without deductions for cutouts, curves, or architectural features. This method typically results in quoted dimensions greater than the dimensions that would be determined by using other accepted methods. The definition of "Unit" and the calculation method to be relied upon is set forth by the Developer in Developer's prospectus and the method set forth in the Developer's prospectus may result in a square footage calculation less than the method used here. Consult the Developer's prospectus to learn Unit dimensions and what is offered with the Unit. Dimensions and unit configuration is not guaranteed and may change during construction. Depictions of furnishings, fixtures and other items of personal property are not included with purchase.

PRIVATE POOL DECK
70'-9" x 54'-10"

BALCONY
82'-5" x 31'-8"

LIVING ROOM
41' x 19'

DINING ROOM
19'-11" x 25'-9"

PRIMARY BEDROOM
25'-2" x 14'-4"

BEDROOM 2
14' x 19'

KITCHEN
20'-6" x 14'-2"

HER WARDROBE
14'-8" x 9'

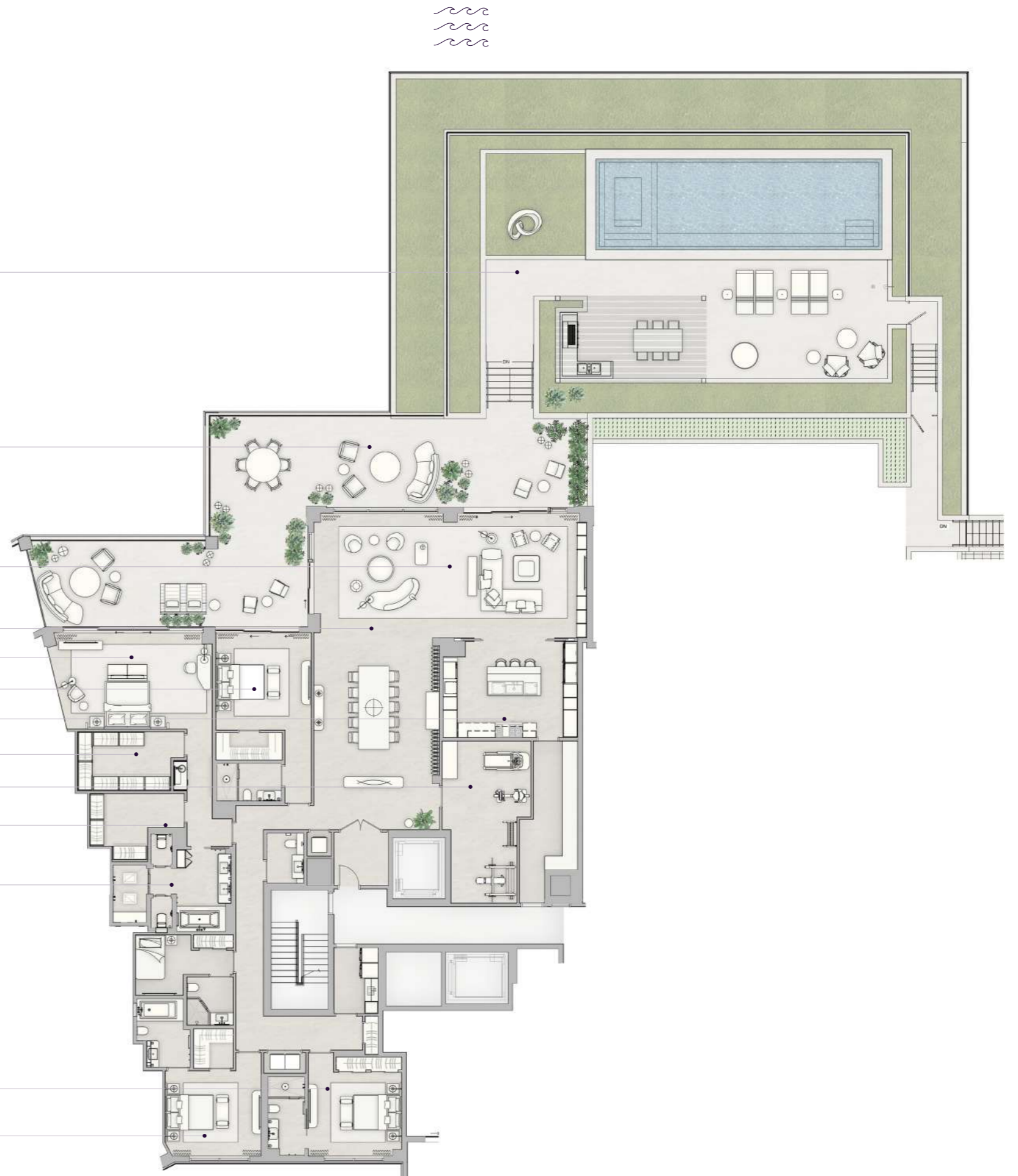
EXERCISE ROOM
13'-8" x 25'-4"

HIS WARDROBE
14'-8" x 9'-7"

PRIMARY BATHROOM
17'-7" x 13'-10"

BEDROOM 3
14'-8" x 16'-3"

BEDROOM 4
14'-3" x 15'-7"



N 25° 45.8255



W 80° 8.4428

RESIDENCE 301

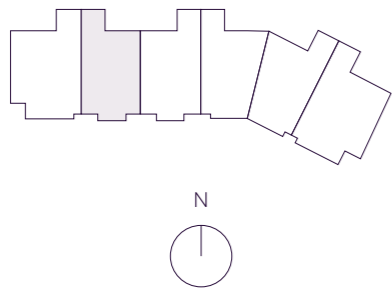
INTERIOR	EXTERIOR
4,980 F ²	2,070 F ²
462.66 M ²	192.31 M ²

TOTAL
7,050 F²
655 M²

*

- 4 BEDROOMS
- 5 BATHROOMS
- 2 POWDER ROOMS
- PRIVATE POOL DECK
- SUMMER KITCHEN
- FAMILY ROOM
- SERVICE SUITE

OCEAN VIEW



THE RESIDENCES

SIX FISHER ISLAND

⑥

6 Fisher Island Drive, Fisher Island, FL 33109
305.873.3852 — 6-fisherisland.com

Douglas Elliman
Development Marketing

The dimensions stated for this unit floor plan are approximate because there are various recognized methods for calculating the square footage of a unit. The square footage stated here is calculated from the exterior boundaries of the exterior walls to the centerline of interior demising walls without deductions for cutouts, curves, or architectural features. This method typically results in quoted dimensions greater than the dimensions that would be determined by using other accepted methods. The definition of "Unit" and the calculation method to be relied upon is set forth by the Developer in Developer's prospectus and the method set forth in the Developer's prospectus may result in a square footage calculation less than the method used here. Consult the Developer's prospectus to learn Unit dimensions and what is offered with the Unit. Dimensions and unit configuration is not guaranteed and may change during construction. Depictions of furnishings, fixtures and other items of personal property are not included with purchase.

PRIMARY BEDROOM
20' x 19'-8"

BALCONY
48'-4" x 16'-1"

HER WARDROBE
12'-9" x 14'

HER BATHROOM
13'-11" x 11'

LIVING ROOM
29'-6" x 17'-8"

HIS BATHROOM
12'-3" x 8'-10"

HIS WARDROBE
14'-10" x 19'-8"

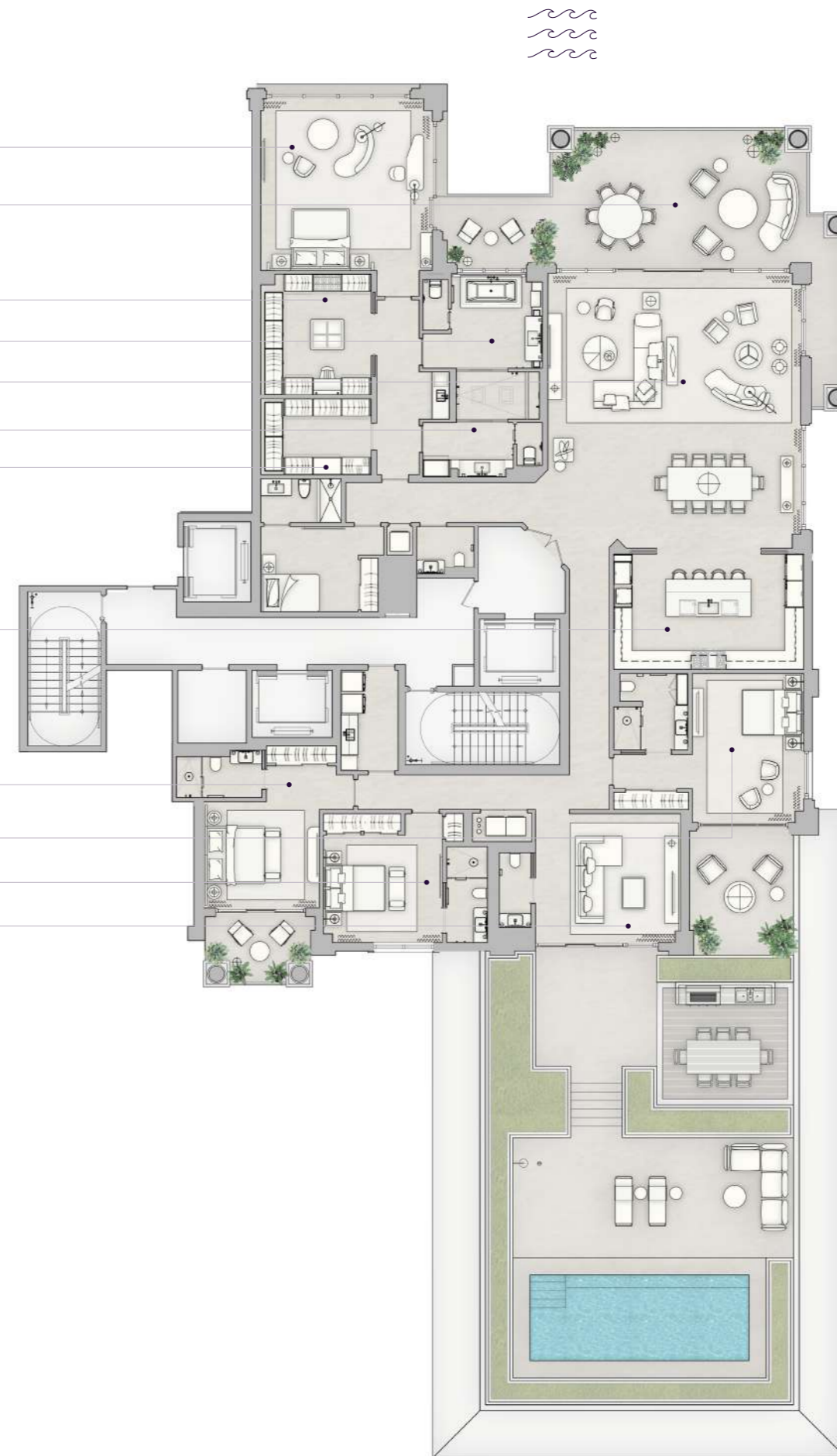
KITCHEN
22' x 13'-5"

BEDROOM 2
13'-6" x 12'-4"

BEDROOM 3
16'-3" x 14'-8"

BEDROOM 4
13' x 15'-9"

FAMILY ROOM
16'-11" x 15'-6"



N 25° 45.8255



W 80° 8.4428

VILLA 01

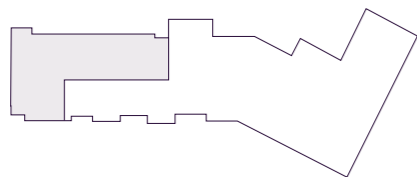
SITE PLAN

INTERIOR
8,835 SF

EXTERIOR
21,475 SF

*

- 5 BEDROOMS
- 7.5 BATHROOMS
- PRIVATE BAYFRONT YARD
- SUMMER KITCHEN
- FAMILY ROOM
- WINE ROOM
- STUDY
- FITNESS STUDIO
- PRIVATE GARAGE
- SERVICE SUITE



THE RESIDENCES

SIX FISHER ISLAND

⑥

6 Fisher Island Drive, Fisher Island, FL 33109
305.873.3852 — 6-fisherisland.com

Douglas Elliman
Development Marketing

The dimensions stated for this unit floor plan are approximate because there are various recognized methods for calculating the square footage of a unit. The square footage stated here is calculated from the exterior boundaries of the exterior walls to the centerline of interior demising walls without deductions for cutouts, curves, or architectural features. This method typically results in quoted dimensions greater than the dimensions that would be determined by using other accepted methods. The definition of "Unit" and the calculation method to be relied upon is set forth by the Developer in Developer's prospectus and the method set forth in the Developer's prospectus may result in a square footage calculation less than the method used here. Consult the Developer's prospectus to learn Unit dimensions and what is offered with the Unit. Dimensions and unit configuration is not guaranteed and may change during construction. Depictions of furnishings, fixtures and other items of personal property are not included with purchase.



N 25° 45.8255



*

W 80° 8.4428

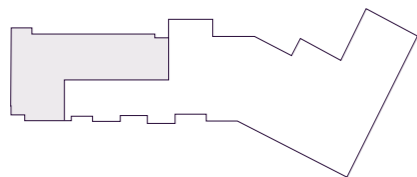
VILLA 01

INTERIOR
8,835 SF

EXTERIOR
21,475 SF

*

- 5 BEDROOMS
- 7.5 BATHROOMS
- PRIVATE BAYFRONT YARD
- SUMMER KITCHEN
- FAMILY ROOM
- WINE ROOM
- STUDY
- FITNESS STUDIO
- PRIVATE GARAGE
- SERVICE SUITE



THE RESIDENCES

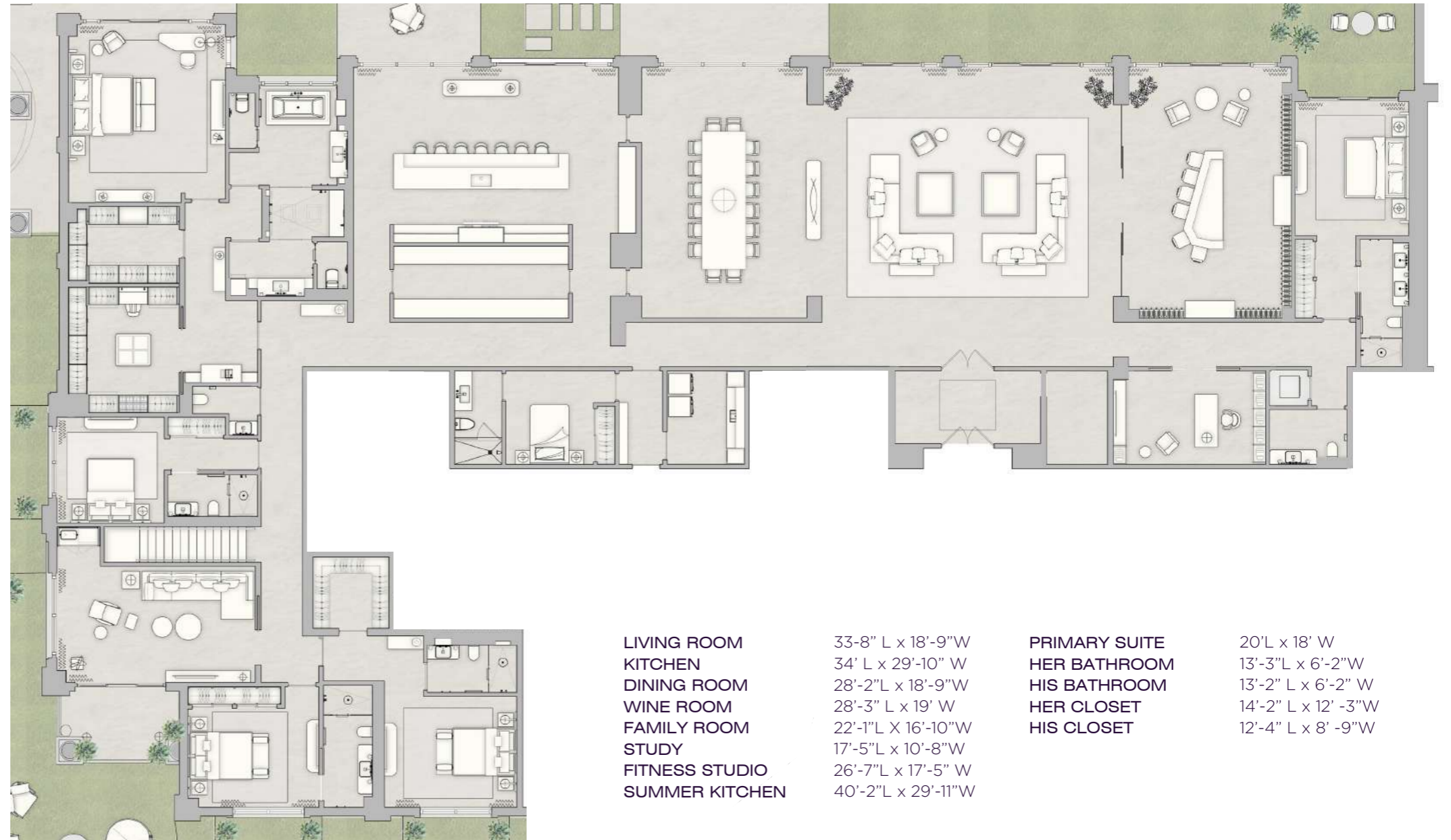
SIX FISHER ISLAND

⑥

6 Fisher Island Drive, Fisher Island, FL 33109
305.873.3852 — 6-fisherisland.com

Douglas Elliman
Development Marketing

The dimensions stated for this unit floor plan are approximate because there are various recognized methods for calculating the square footage of a unit. The square footage stated here is calculated from the exterior boundaries of the exterior walls to the centerline of interior demising walls without deductions for cutouts, curves, or architectural features. This method typically results in quoted dimensions greater than the dimensions that would be determined by using other accepted methods. The definition of "Unit" and the calculation method to be relied upon is set forth by the Developer in Developer's prospectus and the method set forth in the Developer's prospectus may result in a square footage calculation less than the method used here. Consult the Developer's prospectus to learn Unit dimensions and what is offered with the Unit. Dimensions and unit configuration is not guaranteed and may change during construction. Depictions of furnishings, fixtures and other items of personal property are not included with purchase.



LIVING ROOM 33'-8" L x 18'-9" W
 KITCHEN 34' L x 29'-10" W
 DINING ROOM 28'-2" L x 18'-9" W
 WINE ROOM 28'-3" L x 19' W
 FAMILY ROOM 22'-1" L x 16'-10" W
 STUDY 17'-5" L x 10'-8" W
 FITNESS STUDIO 26'-7" L x 17'-5" W
 SUMMER KITCHEN 40'-2" L x 29'-11" W

PRIMARY SUITE 20' L x 18' W
 HER BATHROOM 13'-3" L x 6'-2" W
 HIS BATHROOM 13'-2" L x 6'-2" W
 HER CLOSET 14'-2" L x 12' -3" W
 HIS CLOSET 12'-4" L x 8' -9" W



N 25° 45.8255



W 80° 8.4428

V01 + 206 Interior Area: 13,893sf

RESIDENCE V01C

SITE PLAN

INTERIOR
17,765 SF

EXTERIOR
23,065 SF

*

8 BEDROOMS

11.5 BATHROOMS

FAMILY ROOM

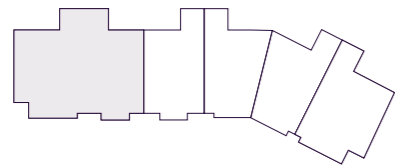
THEATER

OFFICES

KIDS ROOM

SPA

SERVICE SUITES



THE RESIDENCES

SIX FISHER ISLAND

⑥

6 Fisher Island Drive, Fisher Island, FL 33109
305.873.3852 — 6-fisherisland.com

Douglas Elliman
Development Marketing

The dimensions stated for this unit floor plan are approximate because there are various recognized methods for calculating the square footage of a unit. The square footage stated here is calculated from the exterior boundaries of the exterior walls to the centerline of interior demising walls without deductions for cutouts, curves, or architectural features. This method typically results in quoted dimensions greater than the dimensions that would be determined by using other accepted methods. The definition of "Unit" and the calculation method to be relied upon is set forth by the Developer in Developer's prospectus and the method set forth in the Developer's prospectus may result in a square footage calculation less than the method used here. Consult the Developer's prospectus to learn Unit dimensions and what is offered with the Unit. Dimensions and unit configuration is not guaranteed and may change during construction. Depictions of furnishings, fixtures and other items of personal property are not included with purchase.



N 25° 45.8255



W 80° 8.4428

V01 + 206 Interior Area: 13,893sf

RESIDENCE V01C

LOWER LEVEL

INTERIOR
17,765 SF

EXTERIOR
23,065 SF

*

8 BEDROOMS

11.5 BATHROOMS

FAMILY ROOM

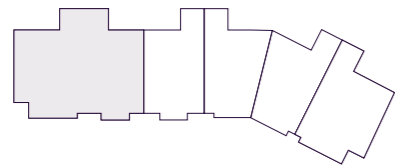
THEATER

OFFICES

KIDS ROOM

SPA

SERVICE SUITES



THE RESIDENCES

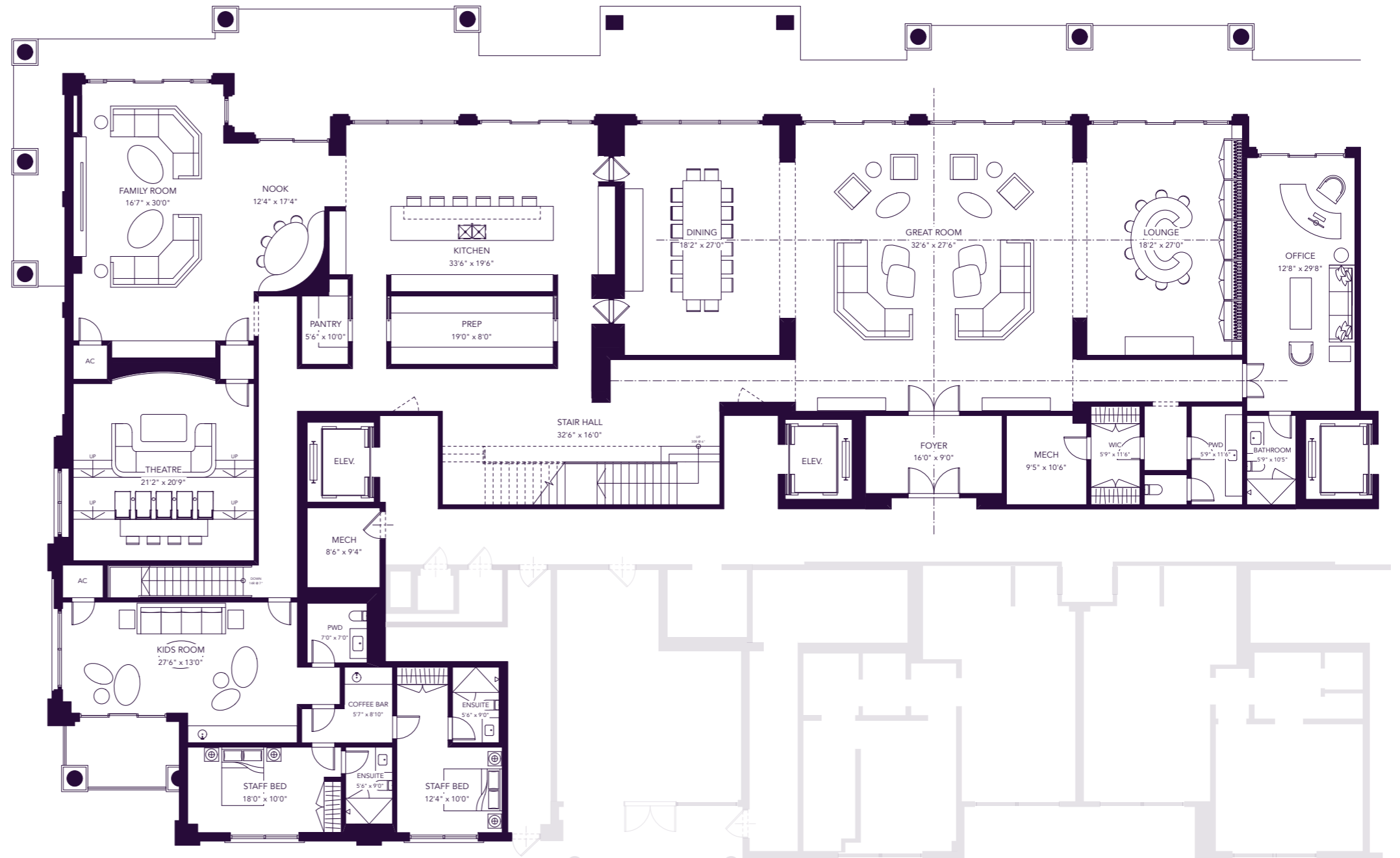
SIX FISHER ISLAND

⑥

6 Fisher Island Drive, Fisher Island, FL 33109
305.873.3852 — 6-fisherisland.com

Douglas Elliman
Development Marketing

The dimensions stated for this unit floor plan are approximate because there are various recognized methods for calculating the square footage of a unit. The square footage stated here is calculated from the exterior boundaries of the exterior walls to the centerline of interior demising walls without deductions for cutouts, curves, or architectural features. This method typically results in quoted dimensions greater than the dimensions that would be determined by using other accepted methods. The definition of "Unit" and the calculation method to be relied upon is set forth by the Developer in Developer's prospectus and the method set forth in the Developer's prospectus may result in a square footage calculation less than the method used here. Consult the Developer's prospectus to learn Unit dimensions and what is offered with the Unit. Dimensions and unit configuration is not guaranteed and may change during construction. Depictions of furnishings, fixtures and other items of personal property are not included with purchase.



N 25° 45.8255



W 80° 8.4428

V01 + 206 Interior Area: 13,893sf

RESIDENCE V01C

UPPER LEVEL

INTERIOR
17,765 SF

EXTERIOR
23,065 SF

*

8 BEDROOMS

11.5 BATHROOMS

FAMILY ROOM

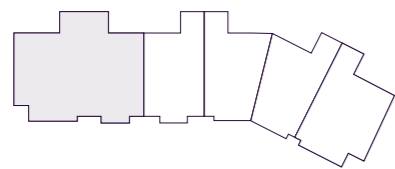
THEATER

OFFICES

KIDS ROOM

SPA

SERVICE SUITES



THE RESIDENCES

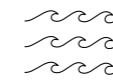
SIX FISHER ISLAND

⑥

6 Fisher Island Drive, Fisher Island, FL 33109
305.873.3852 — 6-fisherisland.com

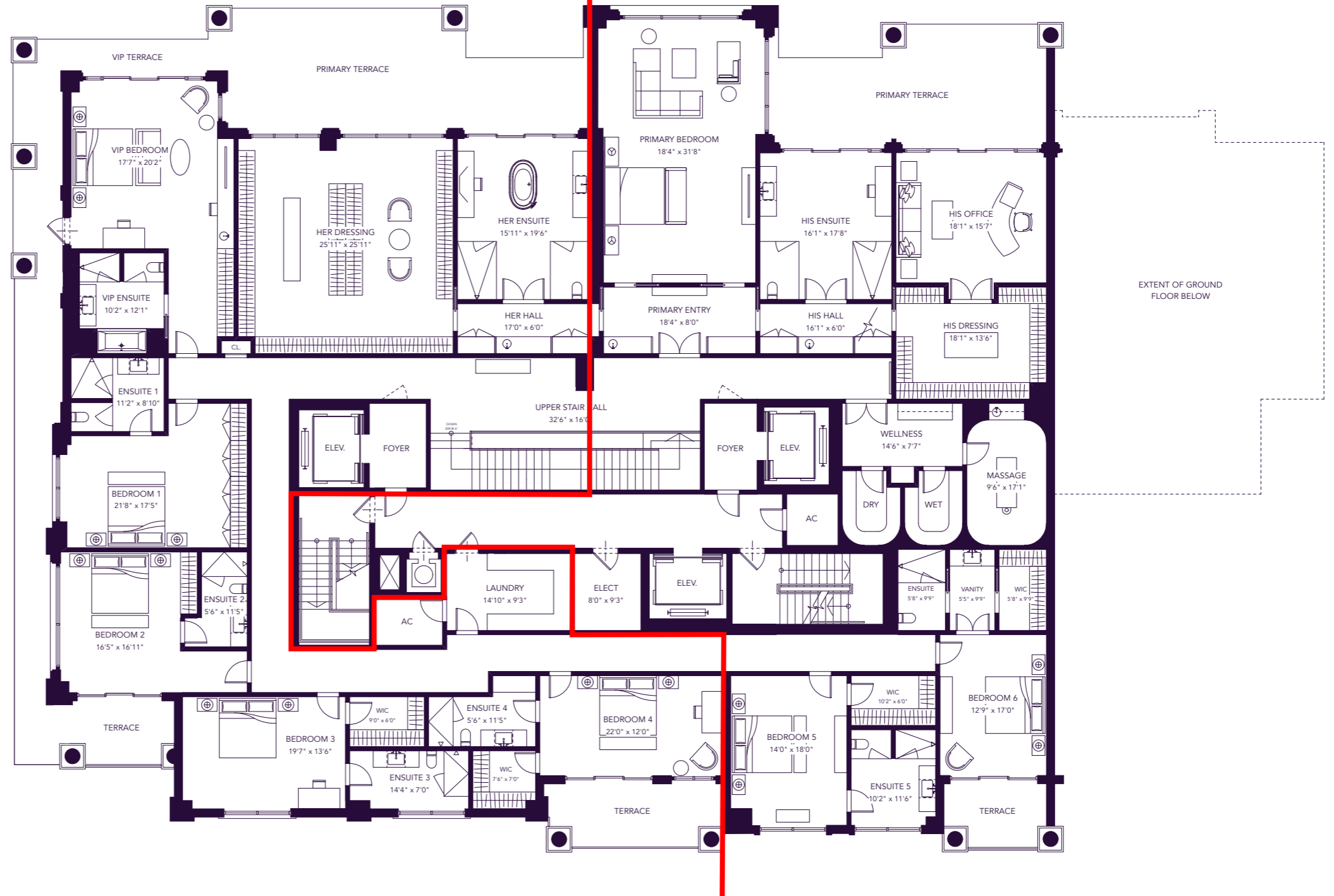
Douglas Elliman
Development Marketing

The dimensions stated for this unit floor plan are approximate because there are various recognized methods for calculating the square footage of a unit. The square footage stated here is calculated from the exterior boundaries of the exterior walls to the centerline of interior demising walls without deductions for cutouts, curves, or architectural features. This method typically results in quoted dimensions greater than the dimensions that would be determined by using other accepted methods. The definition of "Unit" and the calculation method to be relied upon is set forth by the Developer in Developer's prospectus and the method set forth in the Developer's prospectus may result in a square footage calculation less than the method used here. Consult the Developer's prospectus to learn Unit dimensions and what is offered with the Unit. Dimensions and unit configuration is not guaranteed and may change during construction. Depictions of furnishings, fixtures and other items of personal property are not included with purchase.



Residence 06

Residence 05



EXTENT OF GROUND FLOOR BELOW

N 25° 45.8255



W 80° 8.4428