

# UNIT A - Lines 04 & 10

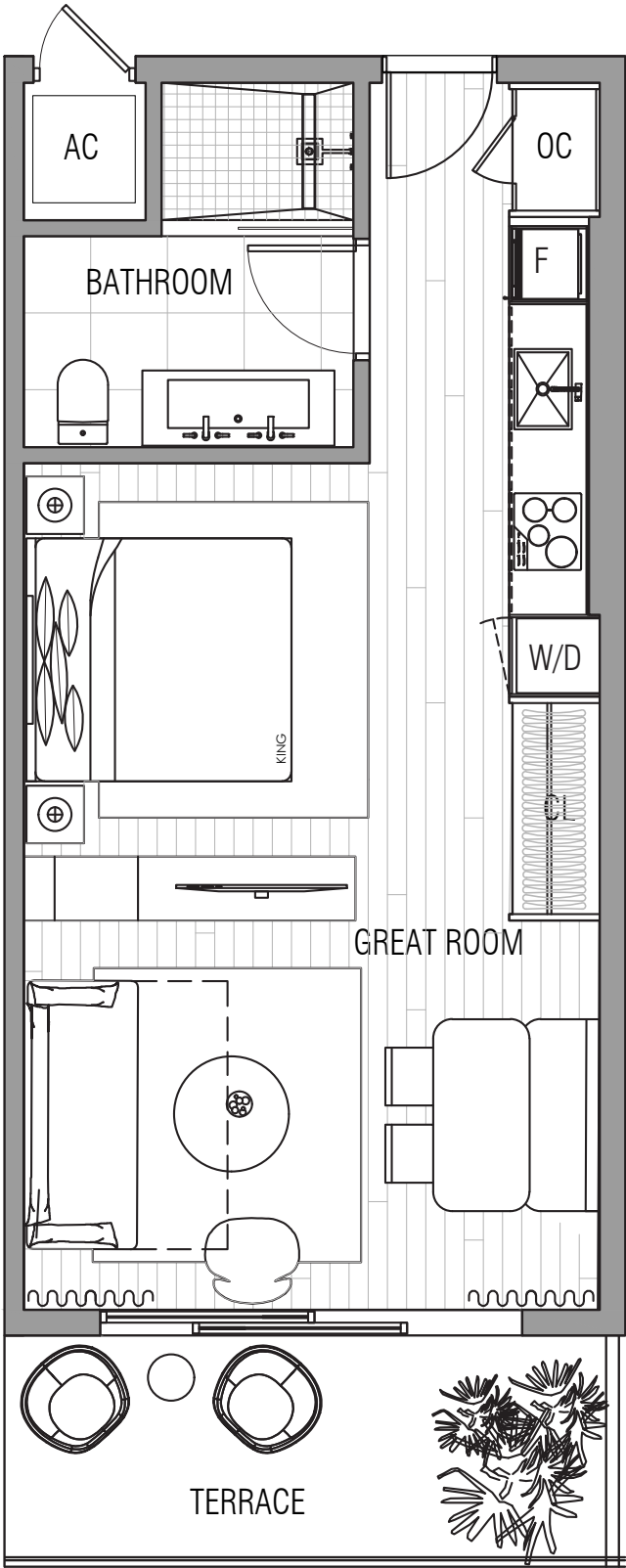
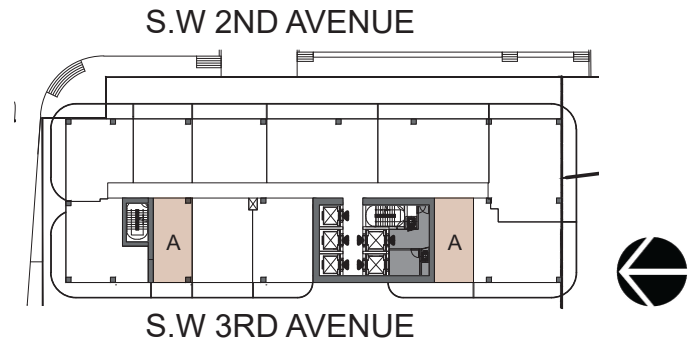
STUDIO  
1 BATHROOM

INTERIOR  
515 SQ. FT.

EXTERIOR  
90 SQ. FT.

TOTAL  
605 SQ. FT.

WEST BROWARD



Disclaimers:

(a)The sketches, renderings, graphic materials, plans, specifications, terms, conditions and statements contained herein are proposed only, and the Developer reserves the right to modify, revise or withdraw any or all of same in its sole discretion and without prior notice. All improvements, designs and construction are subject to first obtaining the appropriate federal, state and local permits and approvals for same.

(b)Any drawings and depictions are conceptual only and are for the convenience of reference. They should not be relied upon as representations, express or implied, of the final detail of the residences. The Developer expressly reserves the right to make modifications, revisions, and changes it deems desirable in its sole and absolute discretion. All depictions of appliances, counters, soffits, floor coverings and other matters of detail are conceptual only and are not necessarily included in each Unit. Consult your Agreement and the Offering Documents for the items included with the Unit. Dimensions and square footage are approximate and may vary with actual construction.

(c)All fixtures and items of finish and decoration are for display only and are not to be included with the unit. Consult the Offering Documents and the Agreement for a description of those features which are to be included in the units.

(d)The features, plans and specifications described above are proposed only, and the Developer reserves the right to modify, revise or withdraw any or all of same in its sole discretion and without prior notice. Without limiting the generality of the foregoing, Developer reserves the right to substitute any of the foregoing with items of similar or better value, in Developer's opinion.

UNIT B.1 - Line 07

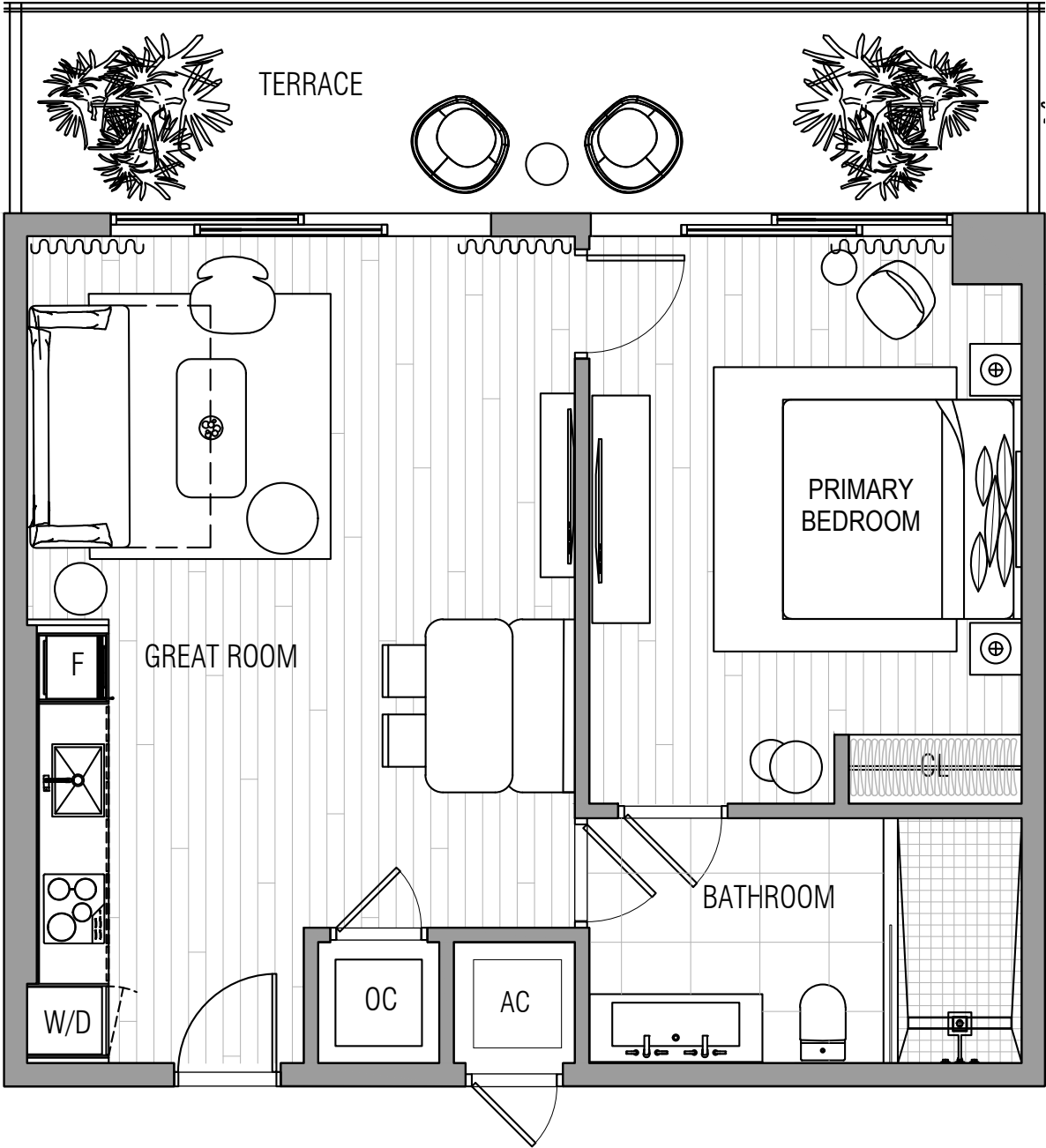
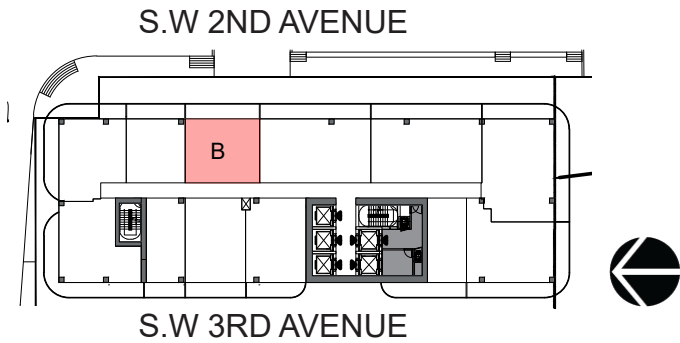
1 BEDROOM  
1 BATHROOM

INTERIOR  
745 SQ. FT.

EXTERIOR  
175 SQ. FT.

TOTAL  
920 SQ. FT.

WEST BROWARD



Disclaimers:  
(a) The sketches, renderings, graphic materials, plans, specifications, terms, conditions and statements contained herein are proposed only, and the Developer reserves the right to modify, revise or withdraw any or all of same in its sole discretion and without prior notice. All improvements, designs and construction are subject to first obtaining the appropriate federal, state and local permits and approvals for same.  
(b) Any drawings and depictions are conceptual only and are for the convenience of reference. They should not be relied upon as representations, express or implied, of the final detail of the residences. The Developer expressly reserves the right to make modifications, revisions, and changes it deems desirable in its sole and absolute discretion. All depictions of appliances, counters, soffits, floor coverings and other matters of detail are conceptual only and are not necessarily included in each Unit. Consult your Agreement and the Offering Documents for the items included with the Unit. Dimensions and square footage are approximate and may vary with actual construction.  
(c) All fixtures and items of finish and decoration are for display only and are not to be included in the unit. Consult the Offering Documents and the Agreement for a description of those features which are to be included in the units.  
(d) The features, plans and specifications described above are proposed only, and the Developer reserves the right to modify, revise or withdraw any or all of same in its sole discretion and without prior notice. Without limiting the generality of the foregoing, Developer reserves the right to substitute any of the foregoing with items of similar or better value, in Developer's opinion.

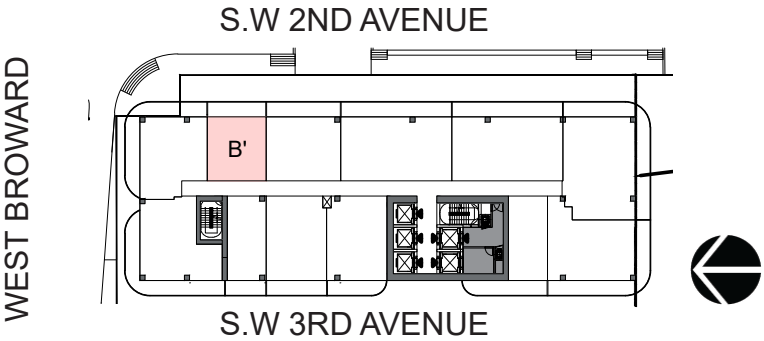
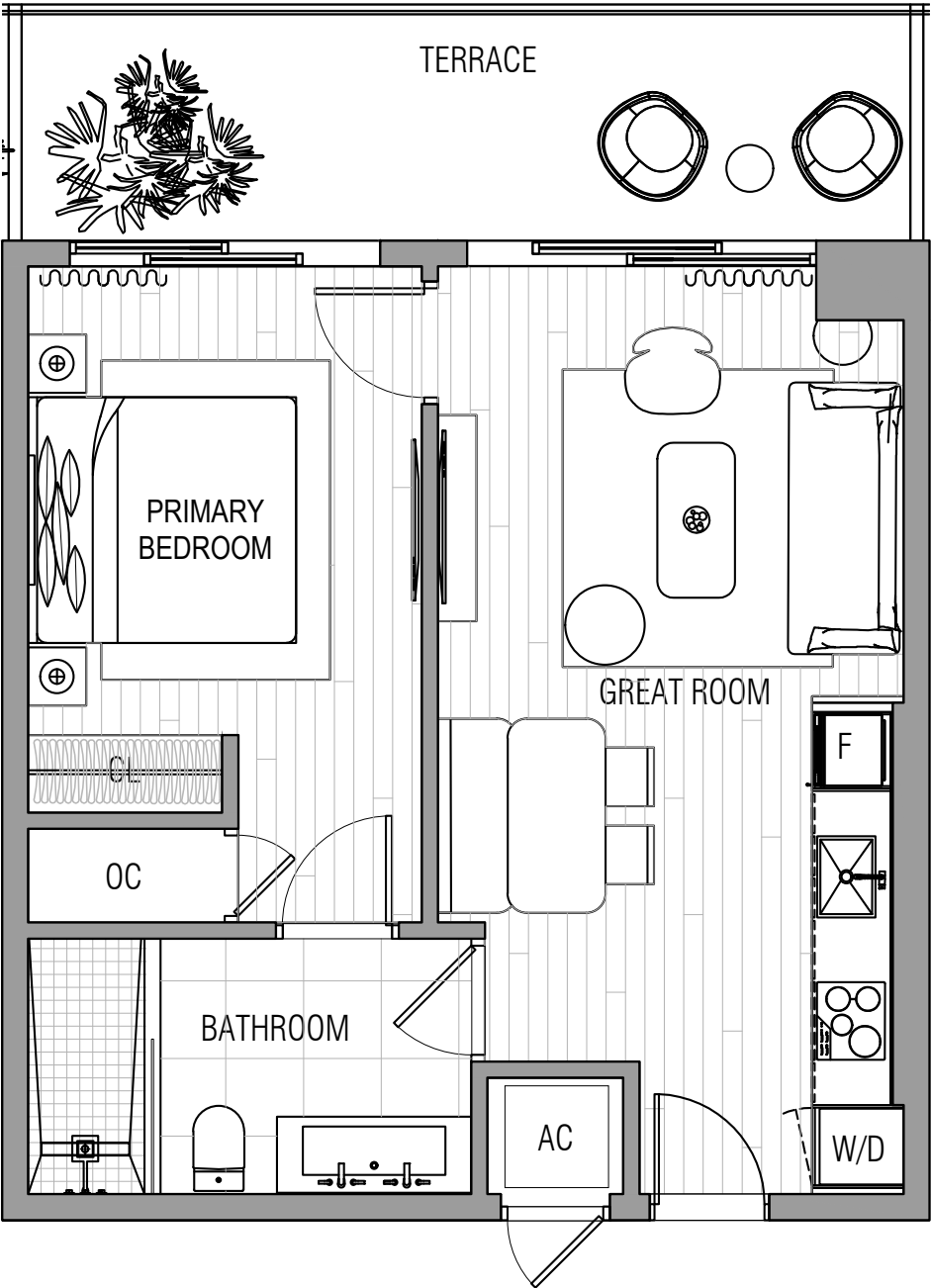
# UNIT B.2 - Line 09

1 BEDROOM  
1 BATHROOM

INTERIOR  
590 SQ. FT.

EXTERIOR  
140 SQ. FT.

TOTAL  
730 SQ. FT.



Disclaimers:  
(a)The sketches, renderings, graphic materials, plans, specifications, terms, conditions and statements contained herein are proposed only, and the Developer reserves the right to modify, revise or withdraw any or all of same in its sole discretion and without prior notice. All improvements, designs and construction are subject to first obtaining the appropriate federal, state and local permits and approvals for same.  
(b)Any drawings and depictions are conceptual only and are for the convenience of reference. They should not be relied upon as representations, express or implied, of the final detail of the residences. The Developer expressly reserves the right to make modifications, revisions, and changes it deems desirable in its sole and absolute discretion. All depictions of appliances, counters, soffits, floor coverings and other matters of detail are conceptual only and are not necessarily included in each Unit. Consult your Agreement and the Offering Documents for the items included with the Unit. Dimensions and square footage are approximate and may vary with actual construction.  
(c)All fixtures and items of finish and decoration are for display only and are not to be included with the unit. Consult the Offering Documents and the Agreement for a description of those features which are to be included in the units.  
(d)The features, plans and specifications described above are proposed only, and the Developer reserves the right to modify, revise or withdraw any or all of same in its sole discretion and without prior notice. Without limiting the generality of the foregoing, Developer reserves the right to substitute any of the foregoing with items of similar or better value, in Developer's opinion.

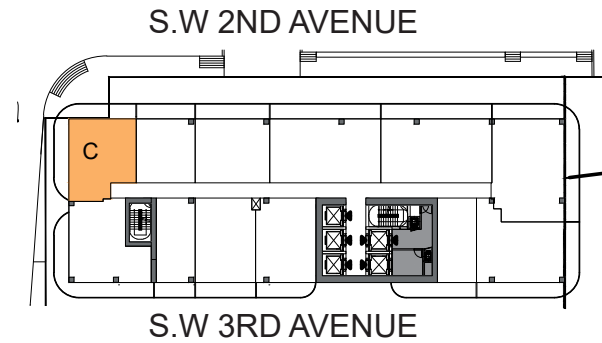
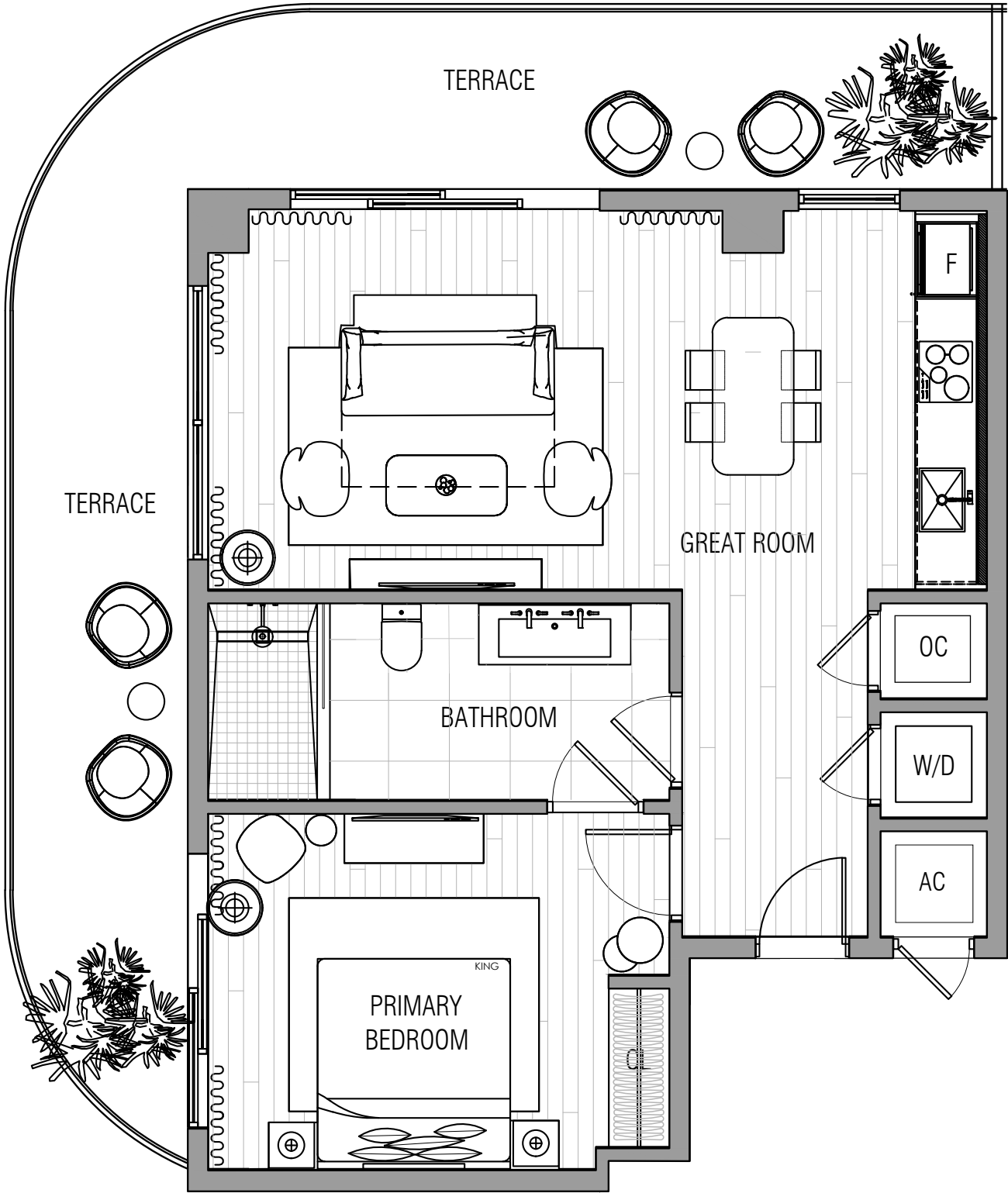
# UNIT C - Line 11

1 BEDROOM  
1 BATHROOM

INTERIOR  
795 SQ. FT.

EXTERIOR  
355 SQ. FT.

TOTAL  
1,150 SQ. FT.



Disclaimers:  
(a) The sketches, renderings, graphic materials, plans, specifications, terms, conditions and statements contained herein are proposed only, and the Developer reserves the right to modify, revise or withdraw any or all of same in its sole discretion and without prior notice. All improvements, designs and construction are subject to first obtaining the appropriate federal, state and local permits and approvals for same.  
(b) Any drawings and depictions are conceptual only and are for the convenience of reference. They should not be relied upon as representations, express or implied, of the final detail of the residences. The Developer expressly reserves the right to make modifications, revisions, and changes it deems desirable in its sole and absolute discretion. All depictions of appliances, counters, soffits, floor coverings and other matters of detail are conceptual only and are not necessarily included in each Unit. Consult your Agreement and the Offering Documents for the items included with the Unit. Dimensions and square footage are approximate and may vary with actual construction.  
(c) All fixtures and items of finish and decoration are for display only and are not to be included with the unit. Consult the Offering Documents and the Agreement for a description of those features which are to be included in the units.  
(d) The features, plans and specifications described above are proposed only, and the Developer reserves the right to modify, revise or withdraw any or all of same in its sole discretion and without prior notice. Without limiting the generality of the foregoing, Developer reserves the right to substitute any of the foregoing with items of similar or better value, in Developer's opinion.

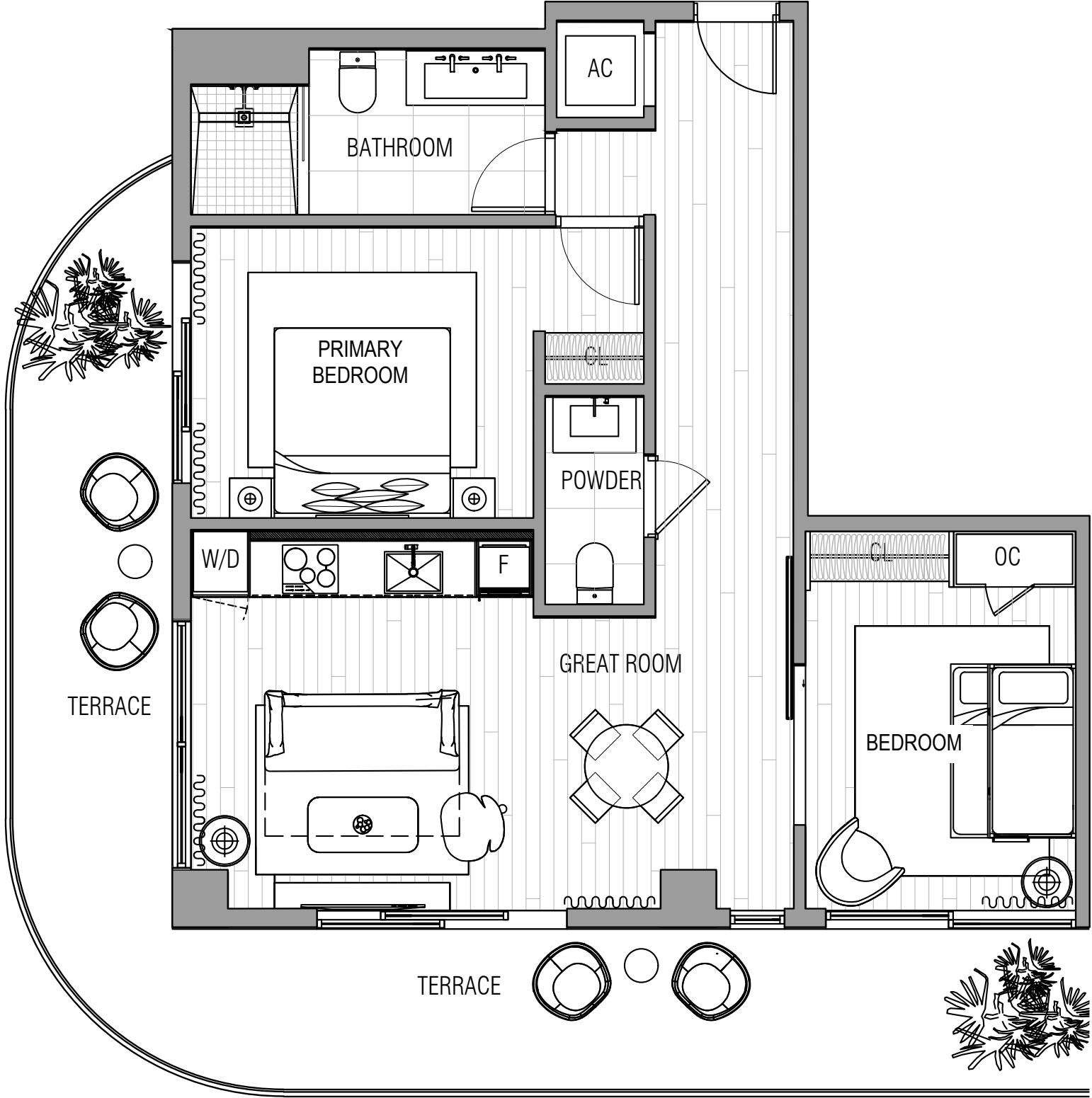
# UNIT D - Line 12

2 BEDROOMS  
1.5 BATHROOMS

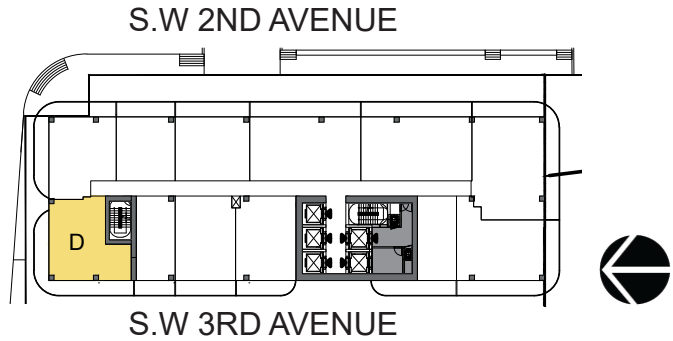
INTERIOR  
880 SQ. FT.

EXTERIOR  
365 SQ. FT.

TOTAL  
1,245 SQ. FT.



WEST BROWARD



Disclaimers:  
(a)The sketches, renderings, graphic materials, plans, specifications, terms, conditions and statements contained herein are proposed only, and the Developer reserves the right to modify, revise or withdraw any or all of same in its sole discretion and without prior notice. All improvements, designs and construction are subject to first obtaining the appropriate federal, state and local permits and approvals for same.  
(b)Any drawings and depictions are conceptual only and are for the convenience of reference. They should not be relied upon as representations, express or implied, of the final detail of the residences. The Developer expressly reserves the right to make modifications, revisions, and changes it deems desirable in its sole and absolute discretion. All depictions of appliances, counters, soffits, floor coverings and other matters of detail are conceptual only and are not necessarily included in each Unit. Consult your Agreement and the Offering Documents for the items included with the Unit. Dimensions and square footage are approximate and may vary with actual construction.  
(c)All fixtures and items of finish and decoration are for display only and are not to be included with the unit. Consult the Offering Documents and the Agreement for a description of those features which are to be included in the units.  
(d)The features, plans and specifications described above are proposed only, and the Developer reserves the right to modify, revise or withdraw any or all of same in its sole discretion and without prior notice. Without limiting the generality of the foregoing, Developer reserves the right to substitute any of the foregoing with items of similar or better value, in Developer's opinion.

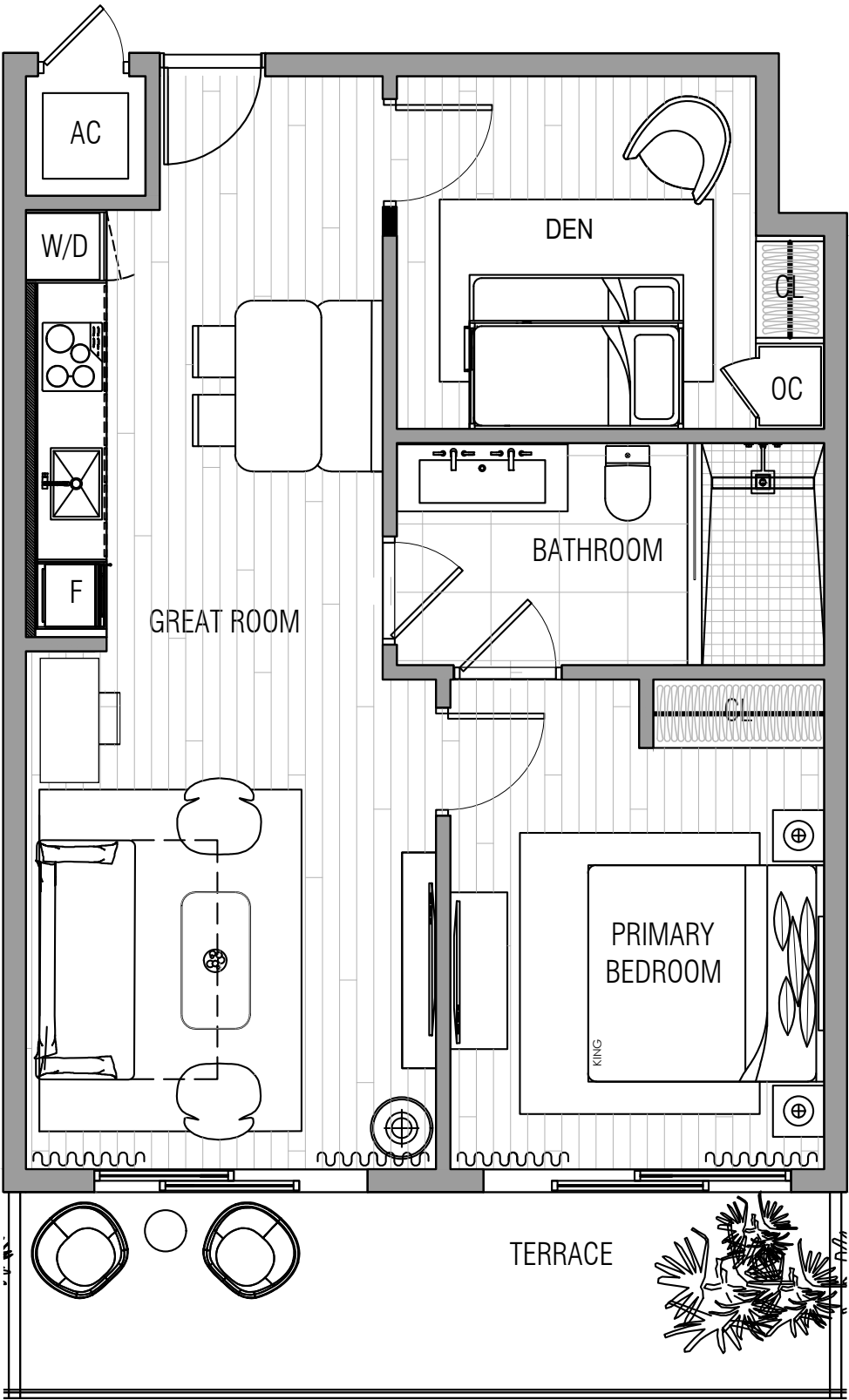
# UNIT E.1 - Line 08

1 BEDROOM + DEN  
1 BATHROOM

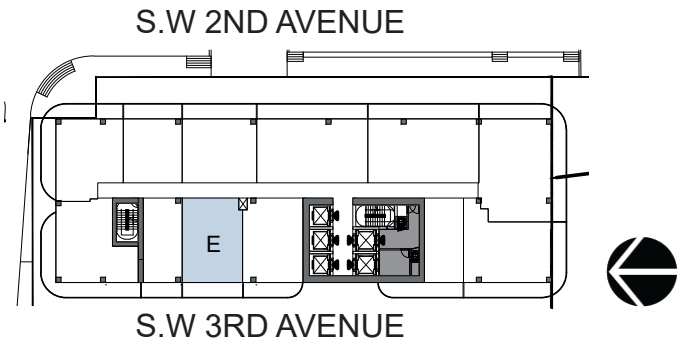
INTERIOR  
800 SQ. FT.

EXTERIOR  
140 SQ. FT.

TOTAL  
940 SQ. FT.



WEST BROWARD



Disclaimers:  
(a)The sketches, renderings, graphic materials, plans, specifications, terms, conditions and statements contained herein are proposed only, and the Developer reserves the right to modify, revise or withdraw any or all of same in its sole discretion and without prior notice. All improvements, designs and construction are subject to first obtaining the appropriate federal, state and local permits and approvals for same.  
(b)Any drawings and depictions are conceptual only and are for the convenience of reference. They should not be relied upon as representations, express or implied, of the final detail of the residences. The Developer expressly reserves the right to make modifications, revisions, and changes it deems desirable in its sole and absolute discretion. All depictions of appliances, counters, soffits, floor coverings and other matters of detail are conceptual only and are not necessarily included in each Unit. Consult your Agreement and the Offering Documents for the items included with the Unit. Dimensions and square footage are approximate and may vary with actual construction.  
(c)All fixtures and items of finish and decoration are for display only and are not to be included with the unit. Consult the Offering Documents and the Agreement for a description of those features which are to be included in the units.  
(d)The features, plans and specifications described above are proposed only, and the Developer reserves the right to modify, revise or withdraw any or all of same in its sole discretion and without prior notice. Without limiting the generality of the foregoing, Developer reserves the right to substitute any of the foregoing with items of similar or better value, in Developer's opinion.

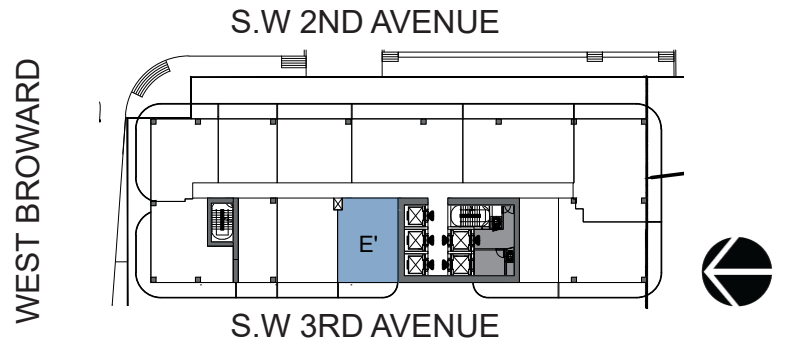
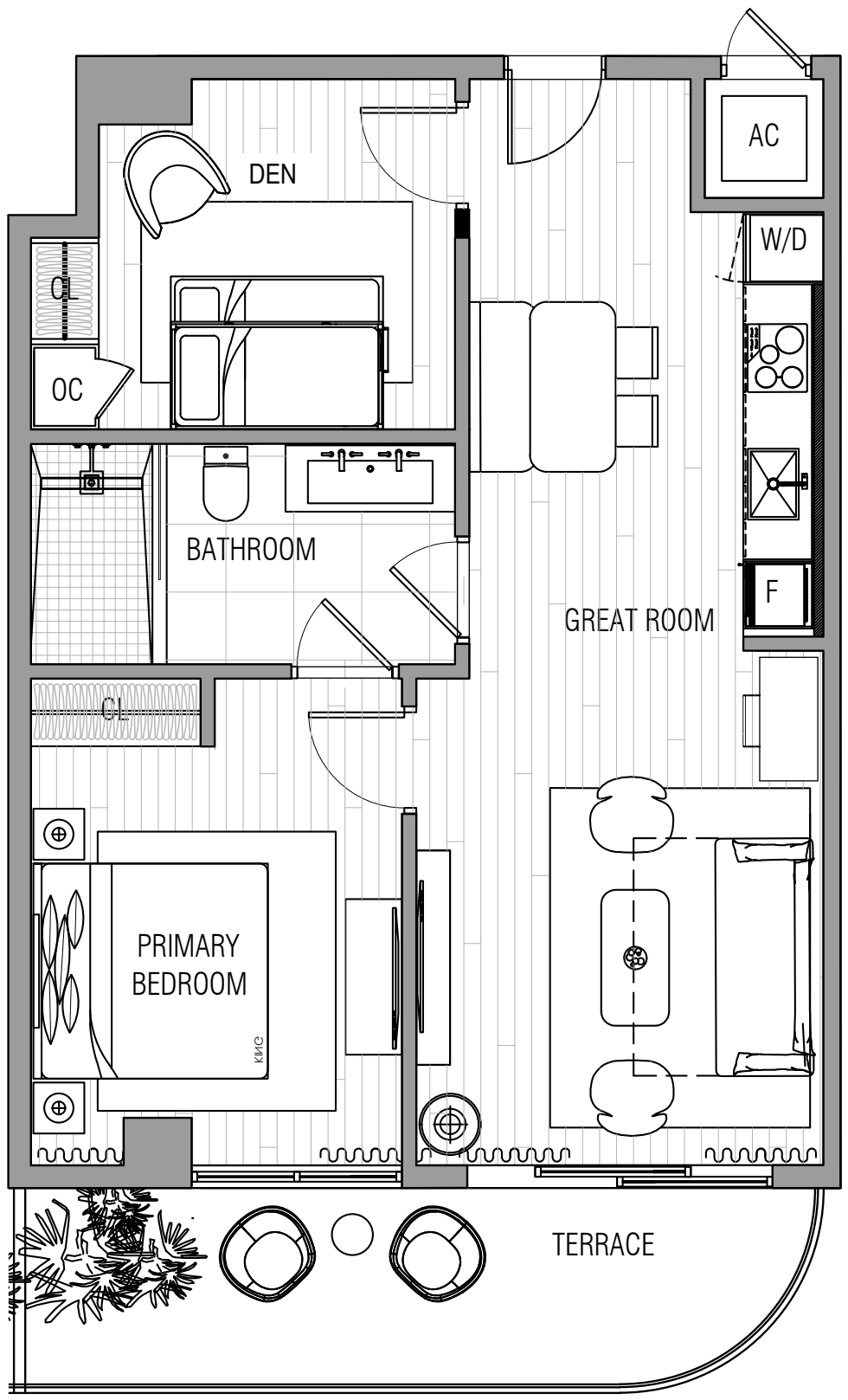
# UNIT E.2 - Line 06

1 BEDROOM + DEN  
1 BATHROOM

INTERIOR  
800 SQ. FT.

EXTERIOR  
135 SQ. FT.

TOTAL  
935 SQ. FT.



Disclaimers:  
(a)The sketches, renderings, graphic materials, plans, specifications, terms, conditions and statements contained herein are proposed only, and the Developer reserves the right to modify, revise or withdraw any or all of same in its sole discretion and without prior notice. All improvements, designs and construction are subject to first obtaining the appropriate federal, state and local permits and approvals for same.  
(b)Any drawings and depictions are conceptual only and are for the convenience of reference. They should not be relied upon as representations, express or implied, of the final detail of the residences. The Developer expressly reserves the right to make modifications, revisions, and changes it deems desirable in its sole and absolute discretion. All depictions of appliances, counters, soffits, floor coverings and other matters of detail are conceptual only and are not necessarily included in each Unit. Consult your Agreement and the Offering Documents for the items included with the Unit. Dimensions and square footage are approximate and may vary with actual construction.  
(c)All fixtures and items of finish and decoration are for display only and are not to be included with the unit. Consult the Offering Documents and the Agreement for a description of those features which are to be included in the units.  
(d)The features, plans and specifications described above are proposed only, and the Developer reserves the right to modify, revise or withdraw any or all of same in its sole discretion and without prior notice. Without limiting the generality of the foregoing, Developer reserves the right to substitute any of the foregoing with items of similar or better value, in Developer's opinion.

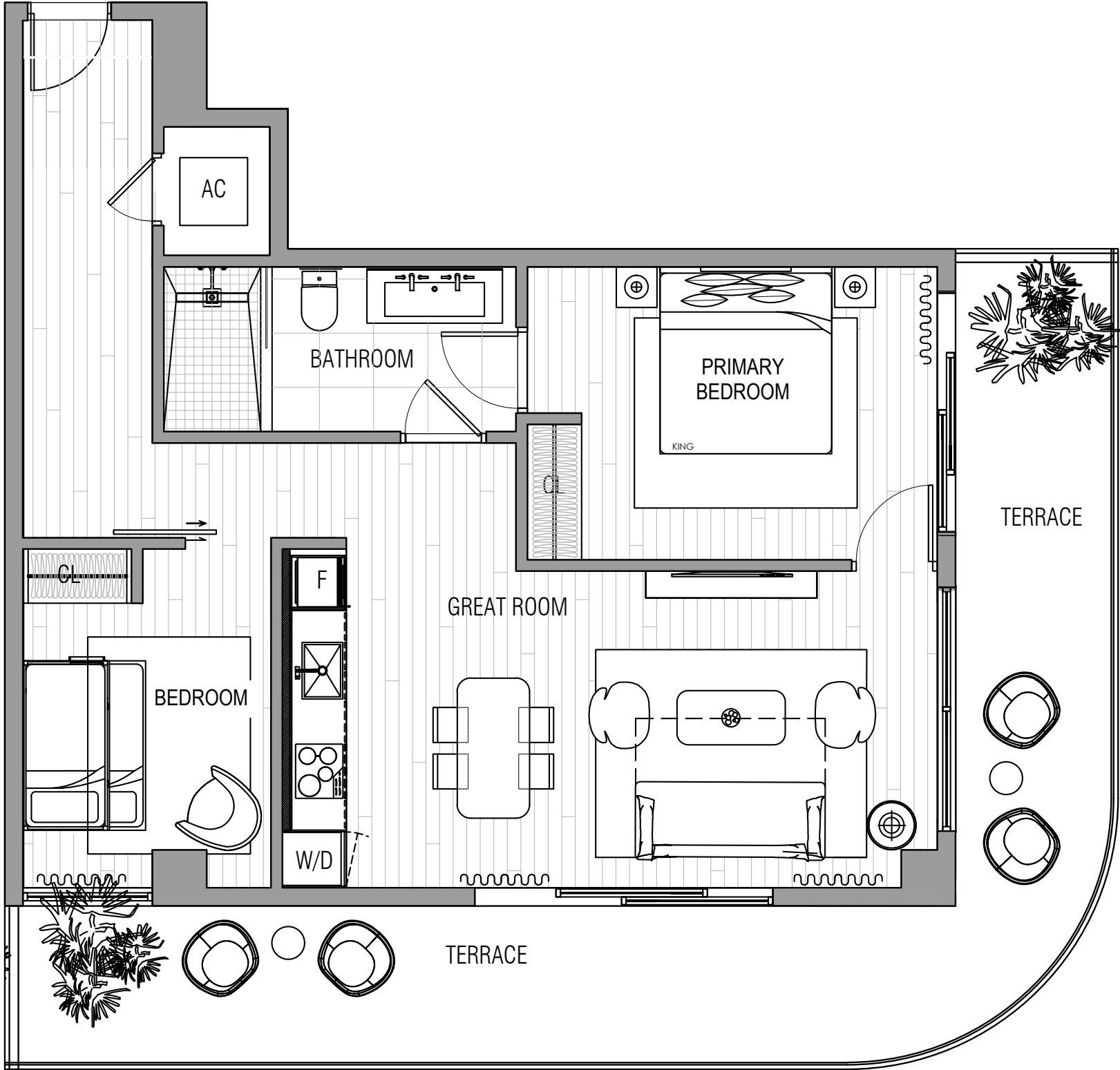
# UNIT F - LINE 02

2 BEDROOMS  
1 BATHROOM

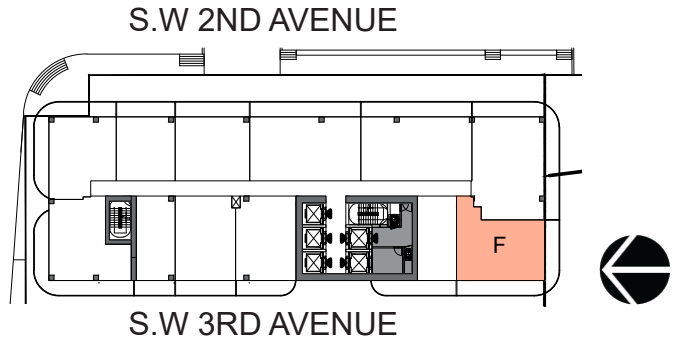
INTERIOR  
915 SQ. FT.

EXTERIOR  
365 SQ. FT.

TOTAL  
1280 SQ. FT.



WEST BROWARD



Disclaimers:  
(a)The sketches, renderings, graphic materials, plans, specifications, terms, conditions and statements contained herein are proposed only, and the Developer reserves the right to modify, revise or withdraw any or all of same in its sole discretion and without prior notice. All improvements, designs and construction are subject to first obtaining the appropriate federal, state and local permits and approvals for same.  
(b)Any drawings and depictions are conceptual only and are for the convenience of reference. They should not be relied upon as representations, express or implied, of the final detail of the residences. The Developer expressly reserves the right to make modifications, revisions, and changes it deems desirable in its sole and absolute discretion. All depictions of appliances, counters, soffits, floor coverings and other matters of detail are conceptual only and are not necessarily included in each Unit. Consult your Agreement and the Offering Documents for the items included with the Unit. Dimensions and square footage are approximate and may vary with actual construction.  
(c)All fixtures and items of finish and decoration are for display only and are not to be included with the unit. Consult the Offering Documents and the Agreement for a description of those features which are to be included in the units.  
(d)The features, plans and specifications described above are proposed only, and the Developer reserves the right to modify, revise or withdraw any or all of same in its sole discretion and without prior notice. Without limiting the generality of the foregoing, Developer reserves the right to substitute any of the foregoing with items of similar or better value, in Developer's opinion.



# UNIT G

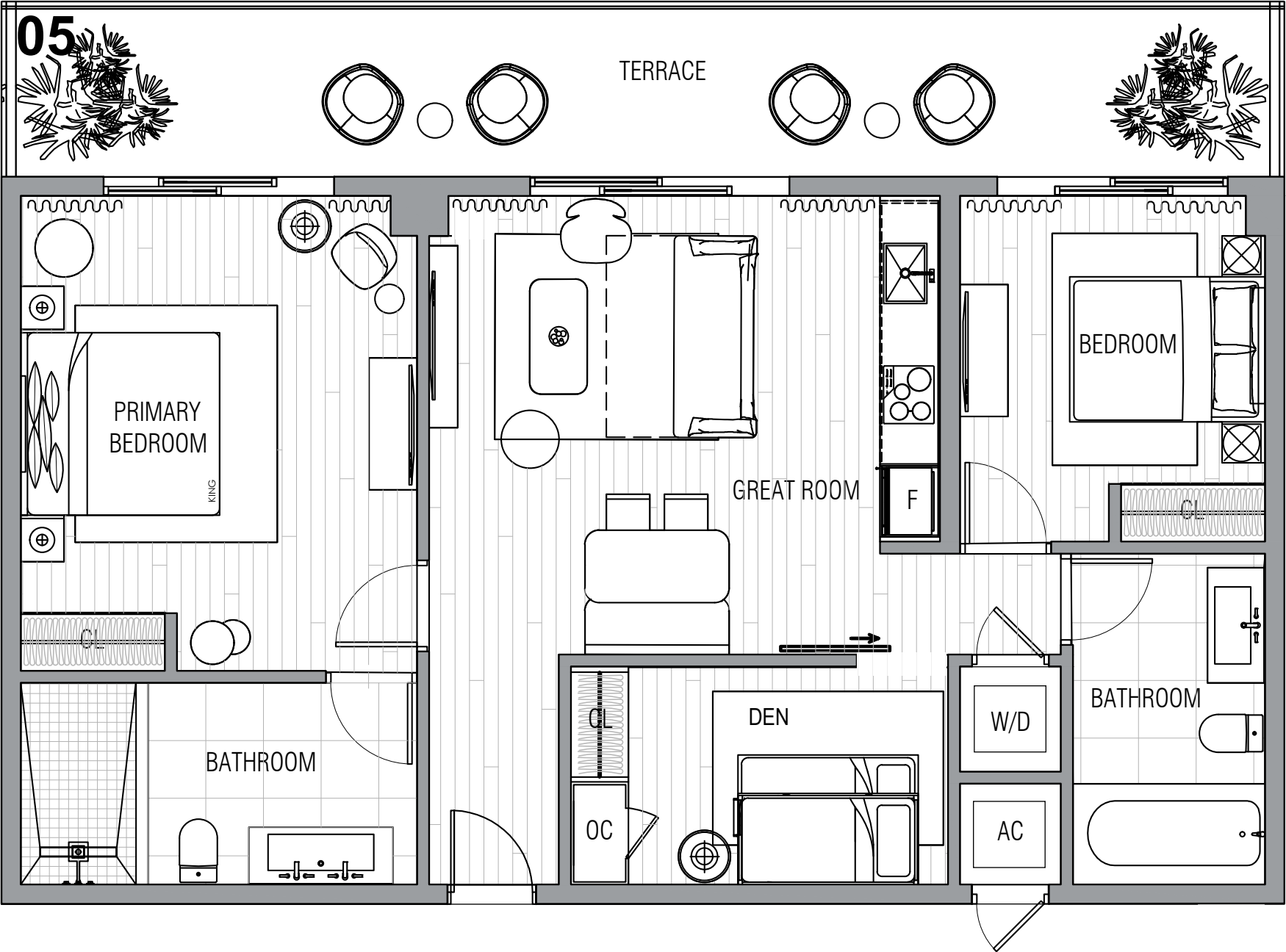
## Lines 03 & 05

2 BEDROOMS + DEN  
2 BATHROOMS

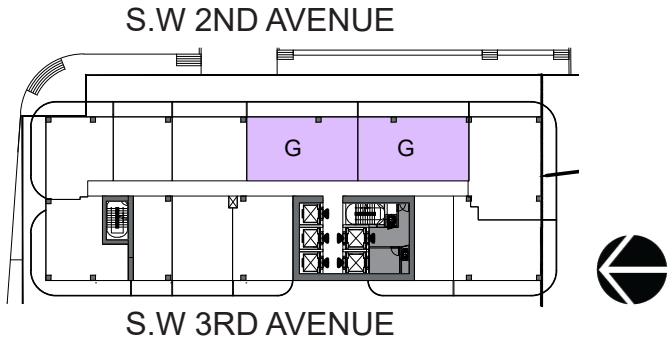
INTERIOR  
1110 SQ. FT.

EXTERIOR  
265 SQ. FT.

TOTAL  
1375 SQ. FT.



WEST BROWARD



Disclaimers:  
(a)The sketches, renderings, graphic materials, plans, specifications, terms, conditions and statements contained herein are proposed only, and the Developer reserves the right to modify, revise or withdraw any or all of same in its sole discretion and without prior notice. All improvements, designs and construction are subject to first obtaining the appropriate federal, state and local permits and approvals for same.  
(b)Any drawings and depictions are conceptual only and are for the convenience of reference. They should not be relied upon as representations, express or implied, of the final detail of the residences. The Developer expressly reserves the right to make modifications, revisions, and changes it deems desirable in its sole and absolute discretion. All depictions of appliances, counters, soffits, floor coverings and other matters of detail are conceptual only and are not necessarily included in each Unit. Consult your Agreement and the Offering Documents for the items included with the Unit. Dimensions and square footage are approximate and may vary with actual construction.  
(c)All fixtures and items of finish and decoration are for display only and are not to be included with the unit. Consult the Offering Documents and the Agreement for a description of those features which are to be included in the units.  
(d)The features, plans and specifications described above are proposed only, and the Developer reserves the right to modify, revise or withdraw any or all of same in its sole discretion and without prior notice. Without limiting the generality of the foregoing, Developer reserves the right to substitute any of the foregoing with items of similar or better value, in Developer's opinion.

# UNIT H - Line 01

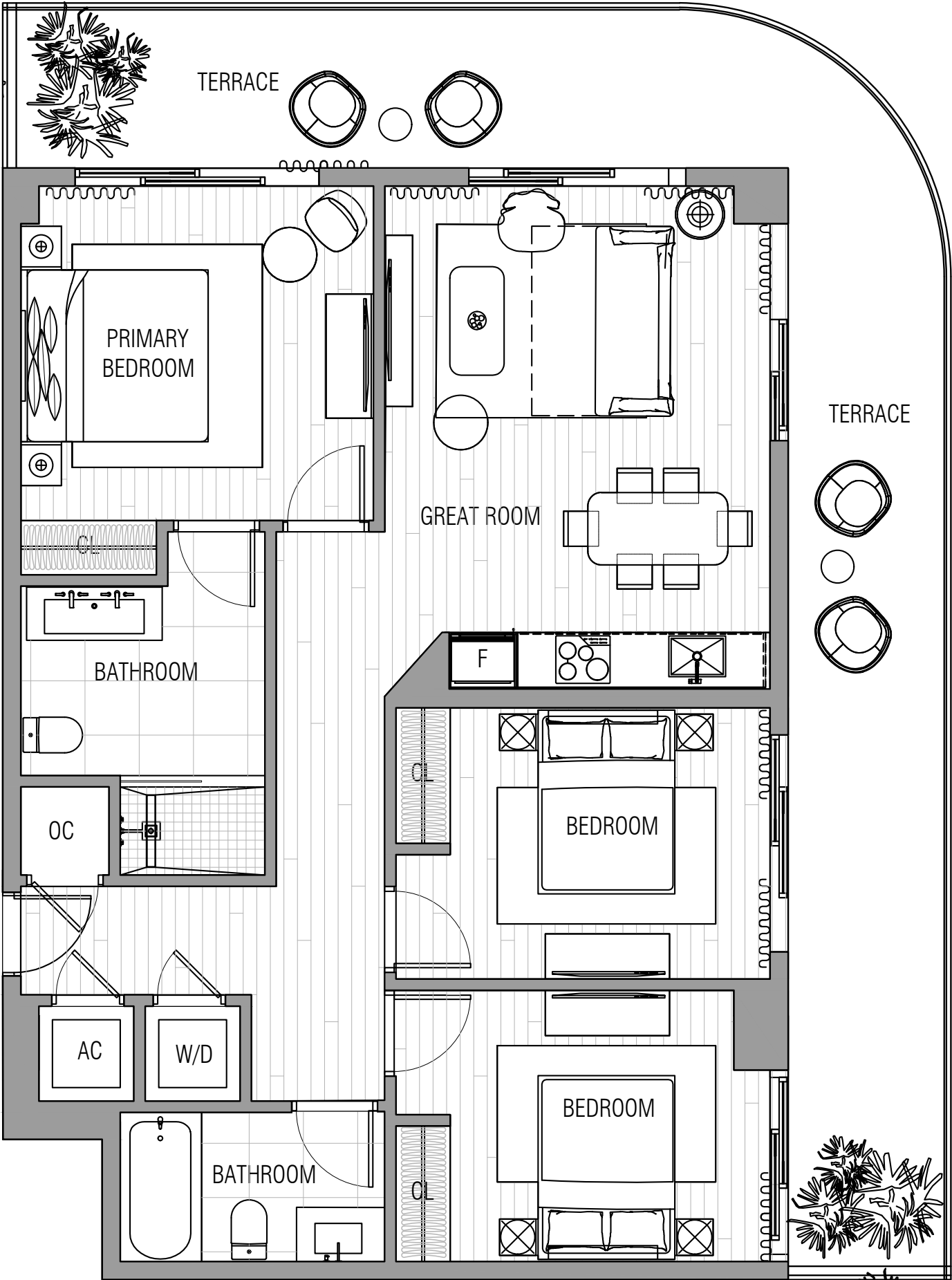
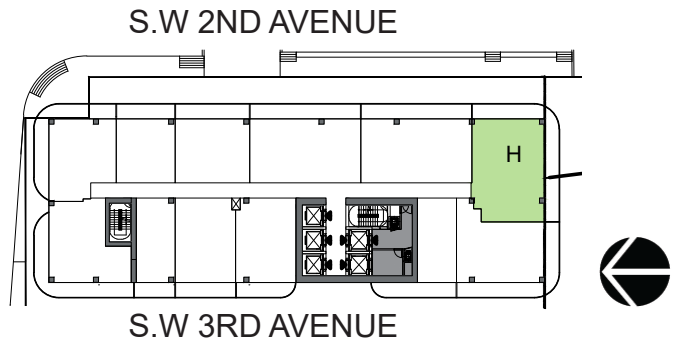
3 BEDROOMS  
2 BATHROOMS

INTERIOR  
1150 SQ. FT.

EXTERIOR  
430 SQ. FT.

TOTAL  
1580 SQ. FT.

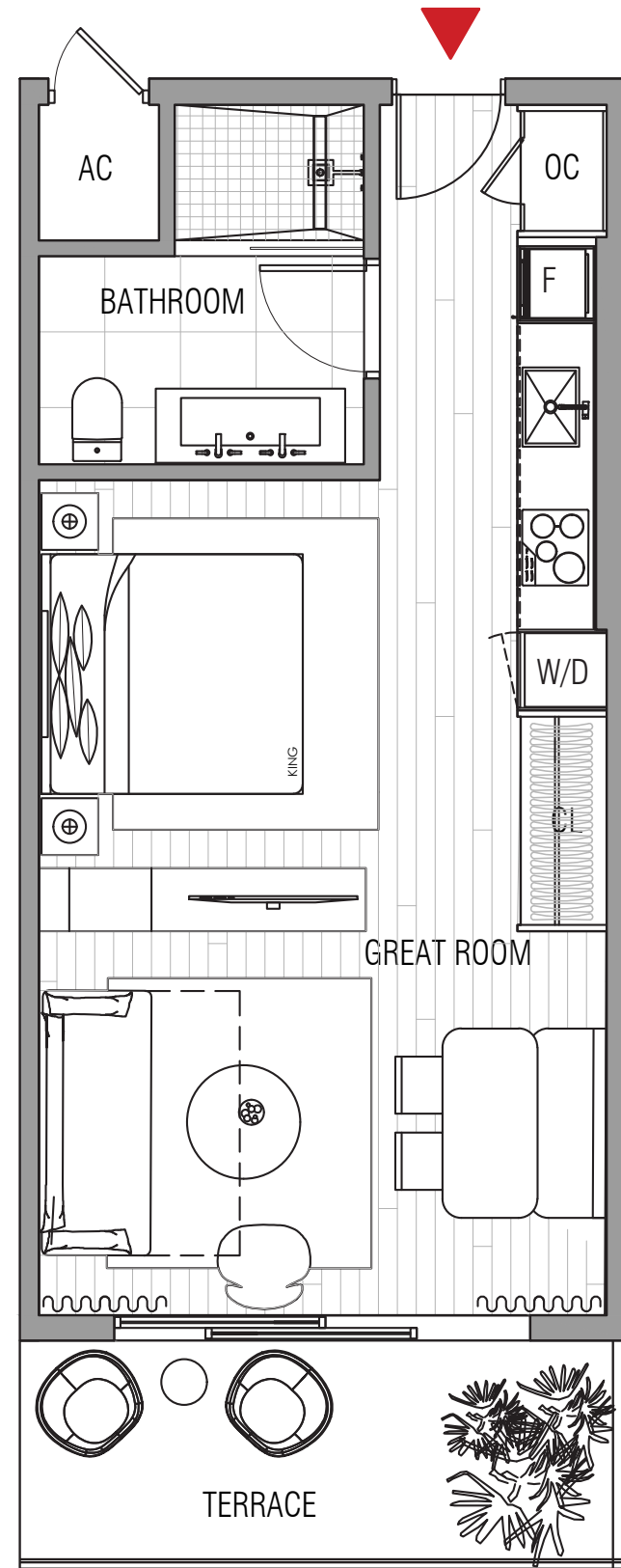
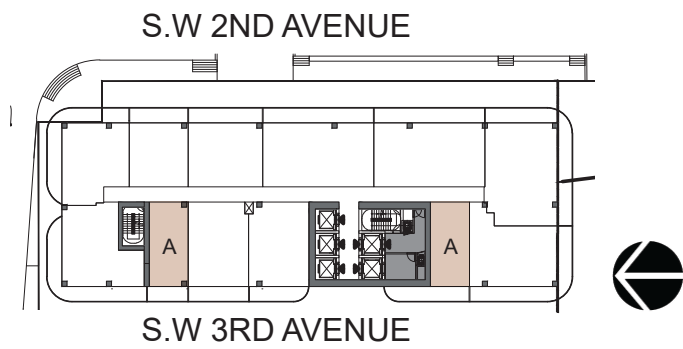
WEST BROWARD



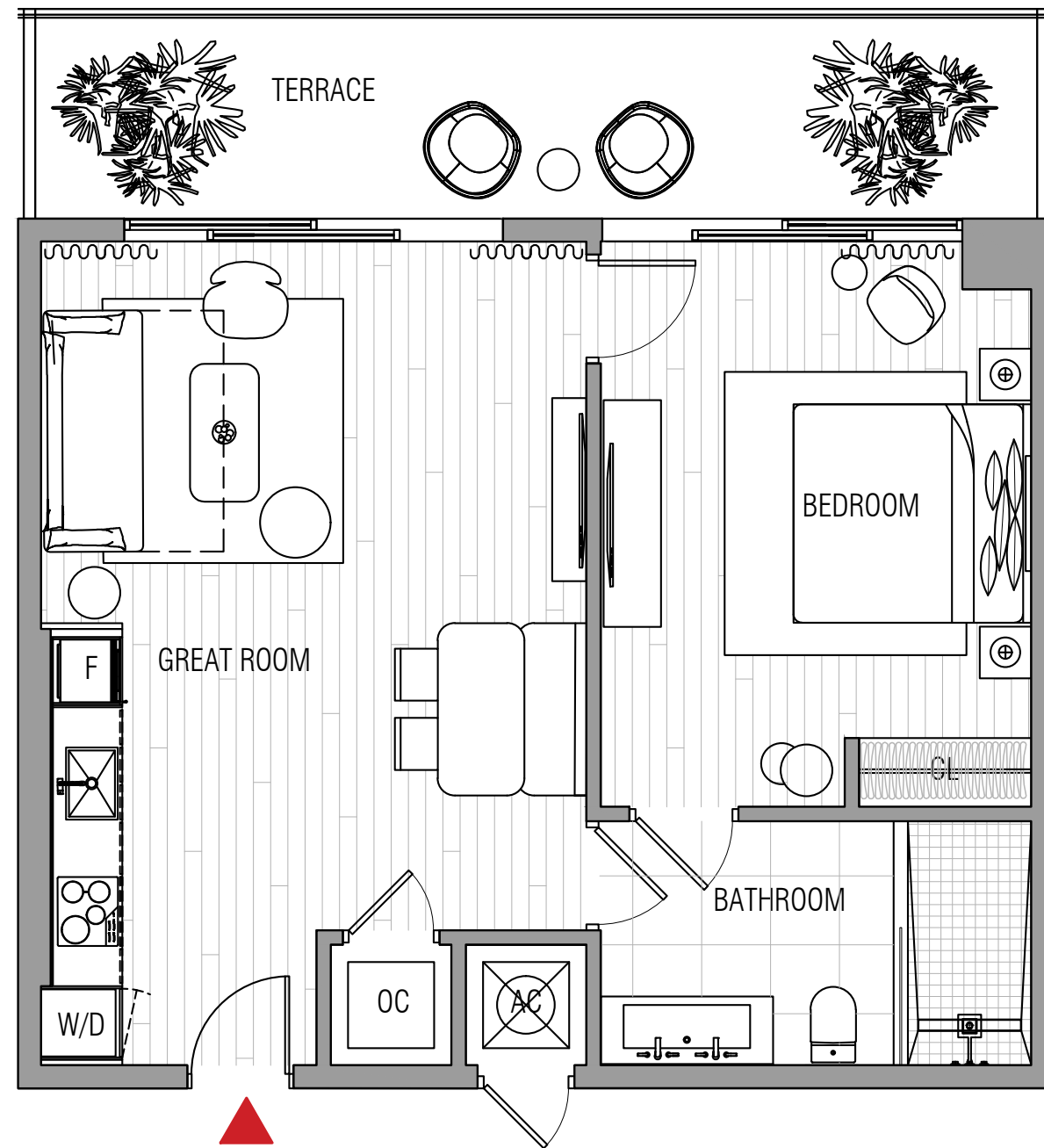
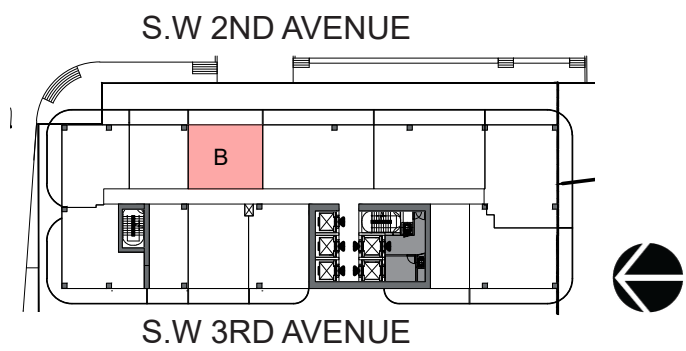
Disclaimers:  
(a)The sketches, renderings, graphic materials, plans, specifications, terms, conditions and statements contained herein are proposed only, and the Developer reserves the right to modify, revise or withdraw any or all of same in its sole discretion and without prior notice. All improvements, designs and construction are subject to first obtaining the appropriate federal, state and local permits and approvals for same.  
(b)Any drawings and depictions are conceptual only and are for the convenience of reference. They should not be relied upon as representations, express or implied, of the final detail of the residences. The Developer expressly reserves the right to make modifications, revisions, and changes it deems desirable in its sole and absolute discretion. All depictions of appliances, counters, soffits, floor coverings and other matters of detail are conceptual only and are not necessarily included in each Unit. Consult your Agreement and the Offering Documents for the items included with the Unit. Dimensions and square footage are approximate and may vary with actual construction.  
(c)All fixtures and items of finish and decoration are for display only and are not to be included with the unit. Consult the Offering Documents and the Agreement for a description of those features which are to be included in the units.  
(d)The features, plans and specifications described above are proposed only, and the Developer reserves the right to modify, revise or withdraw any or all of same in its sole discretion and without prior notice. Without limiting the generality of the foregoing, Developer reserves the right to substitute any of the foregoing with items of similar or better value, in Developer's opinion.



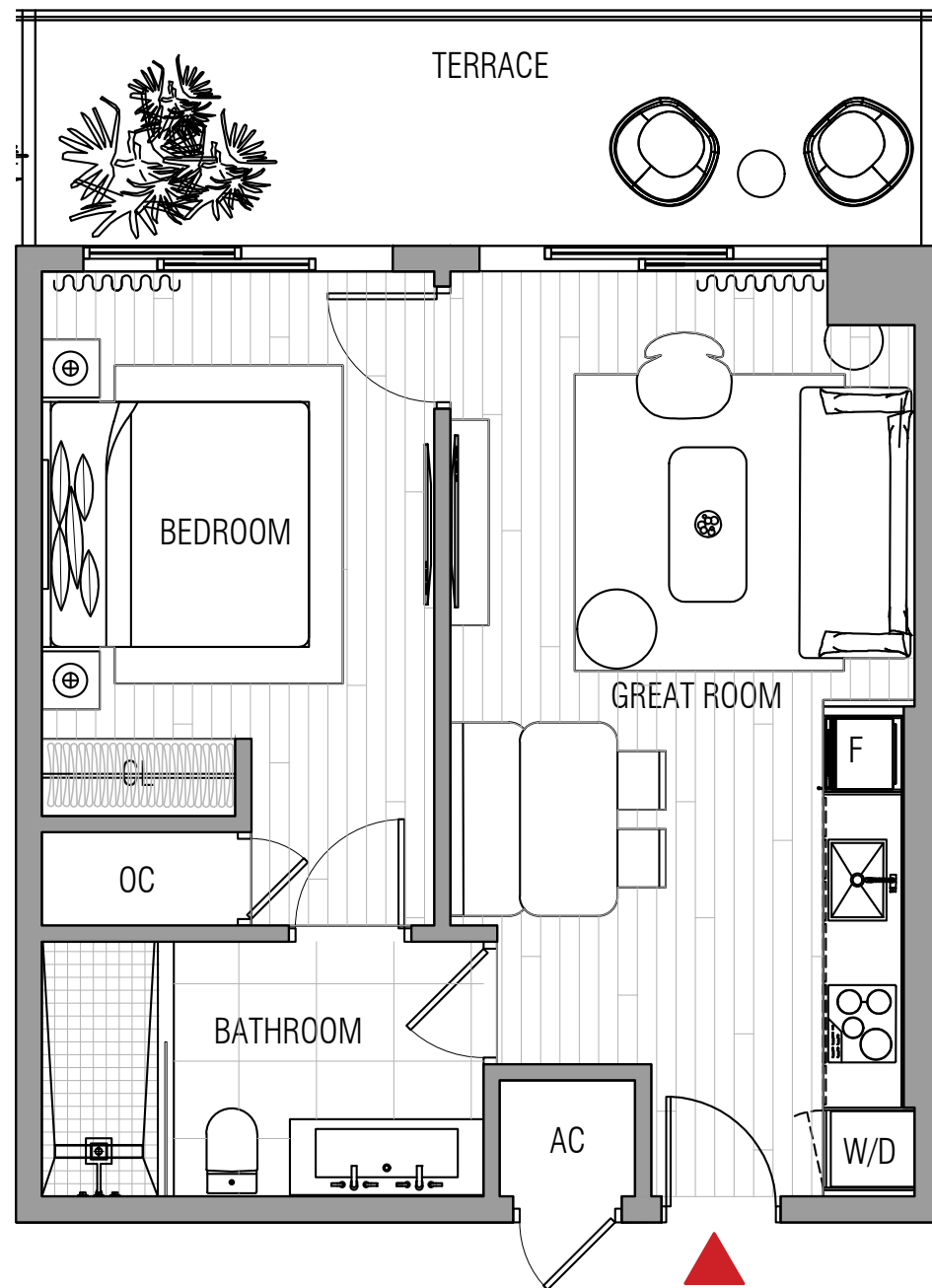
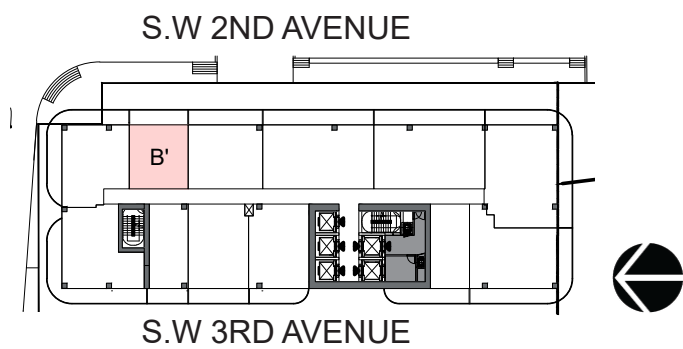
WEST BROWARD



WEST BROWARD

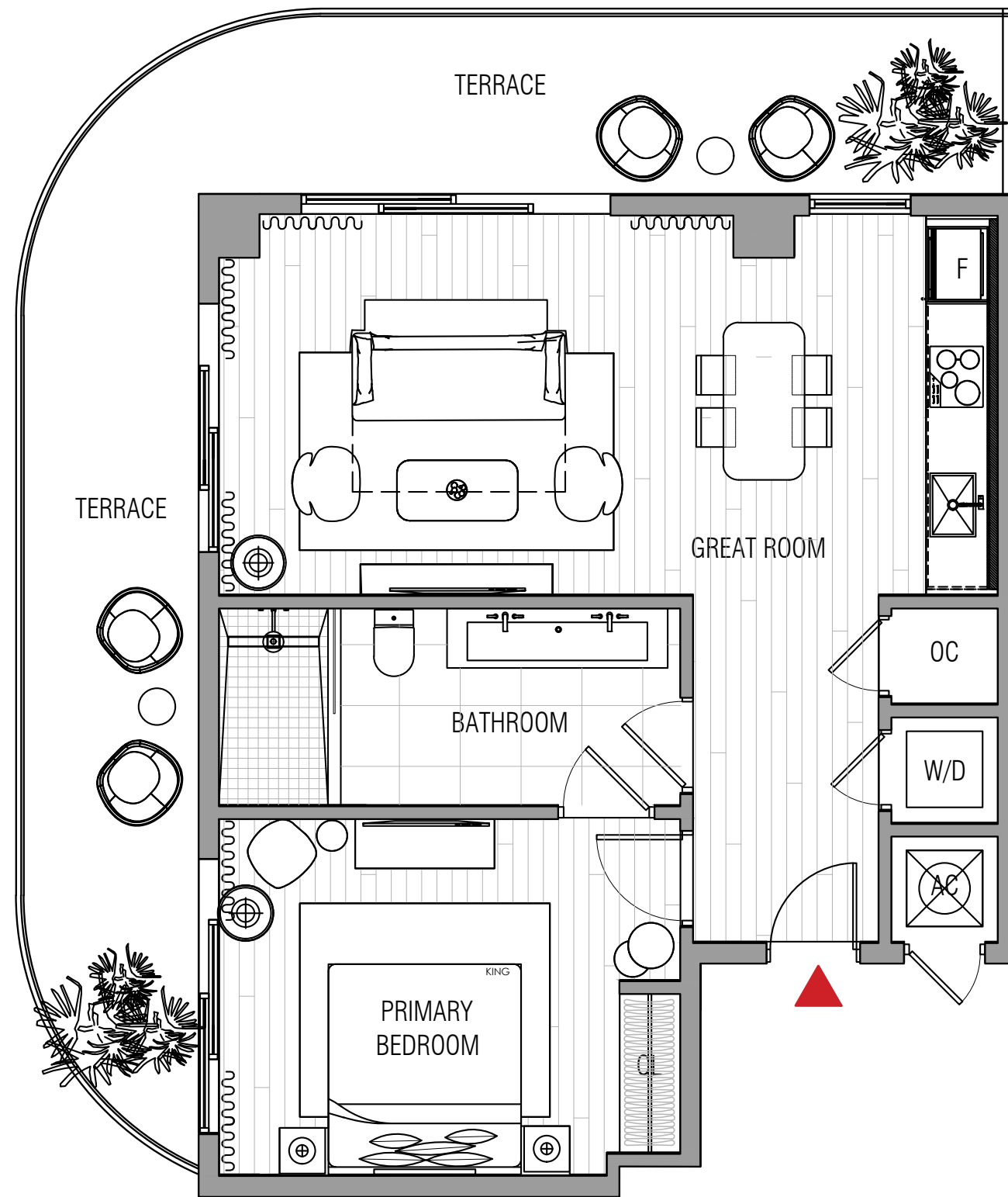
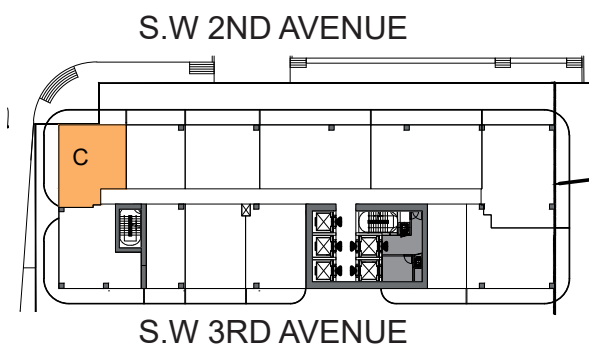


WEST BROWARD



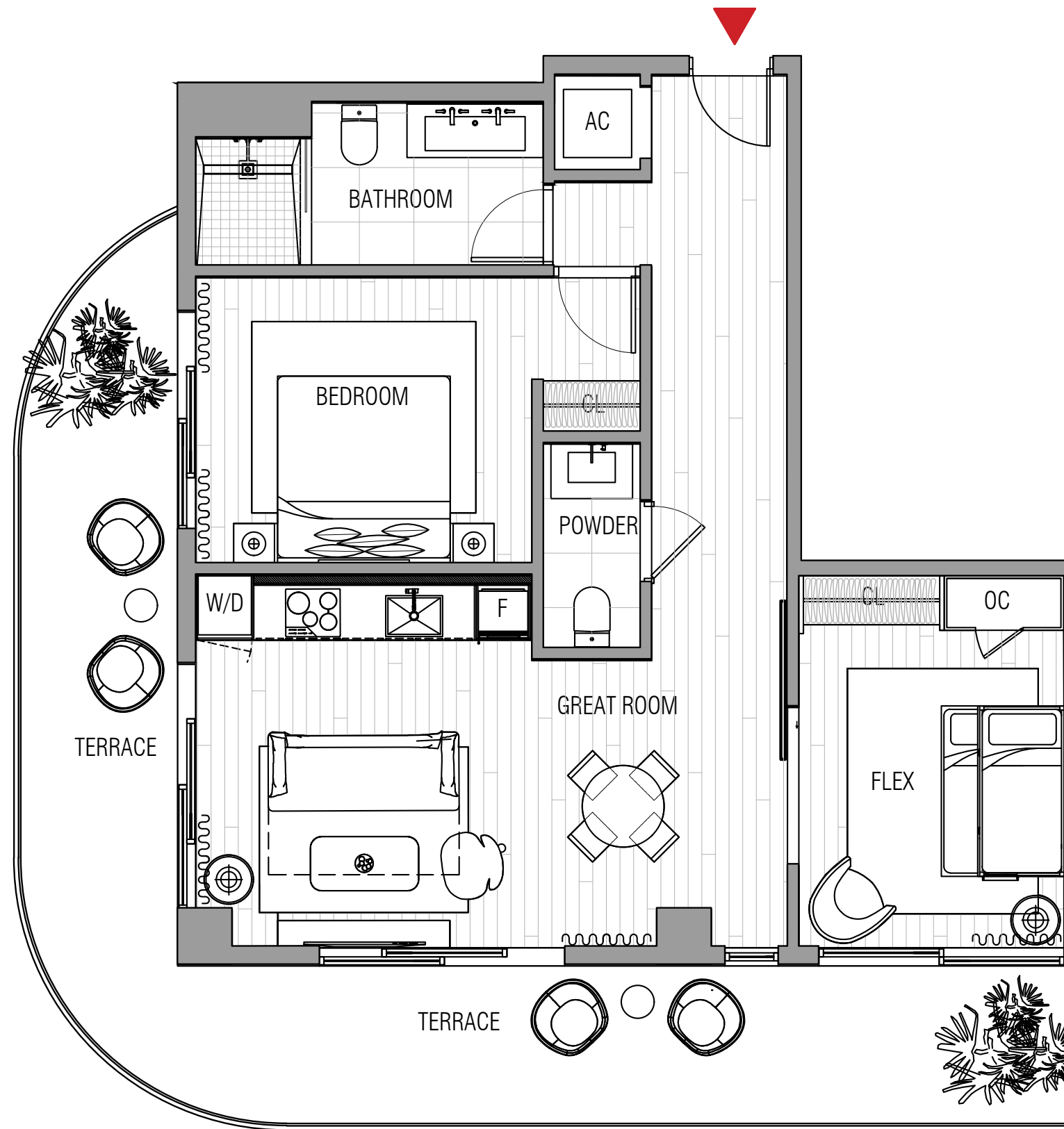
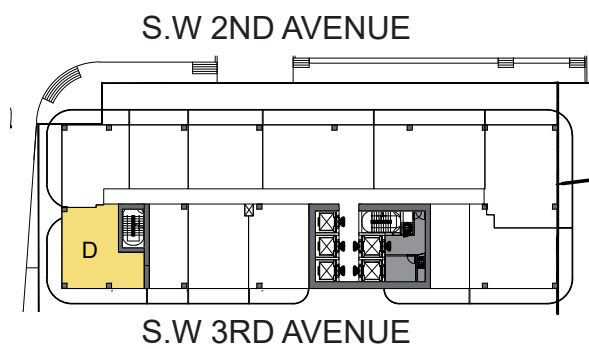
0' 5' 10'

WEST BROWARD



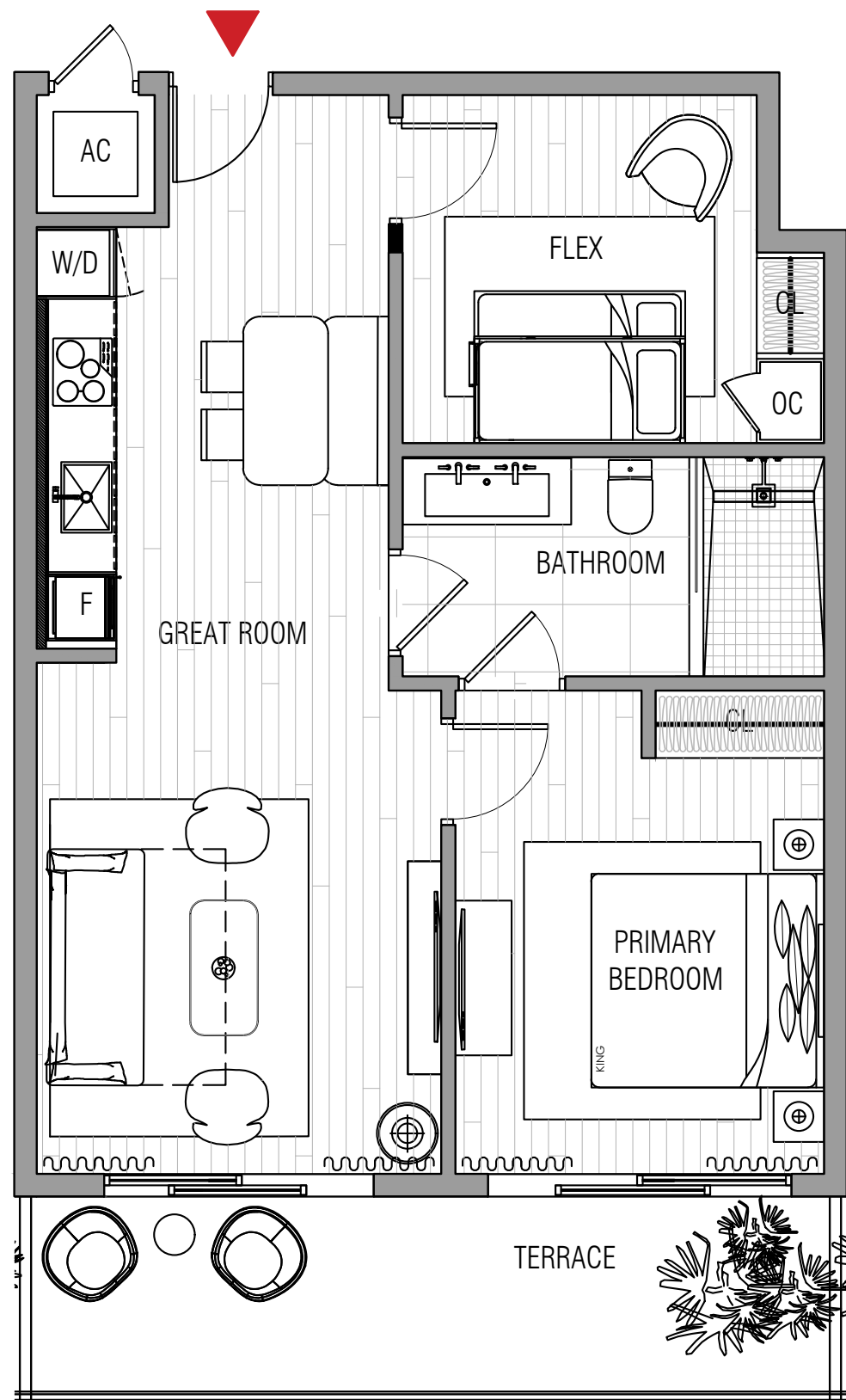
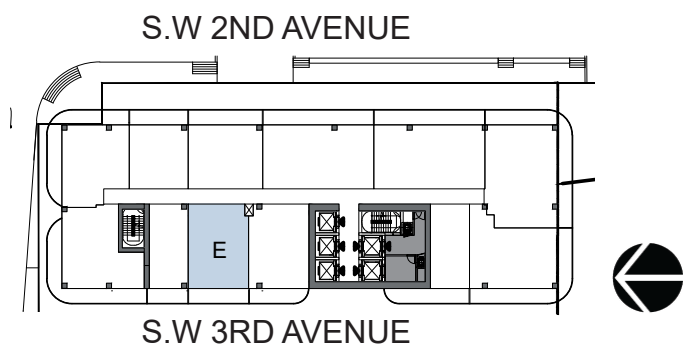
0' 5' 10'

WEST BROWARD

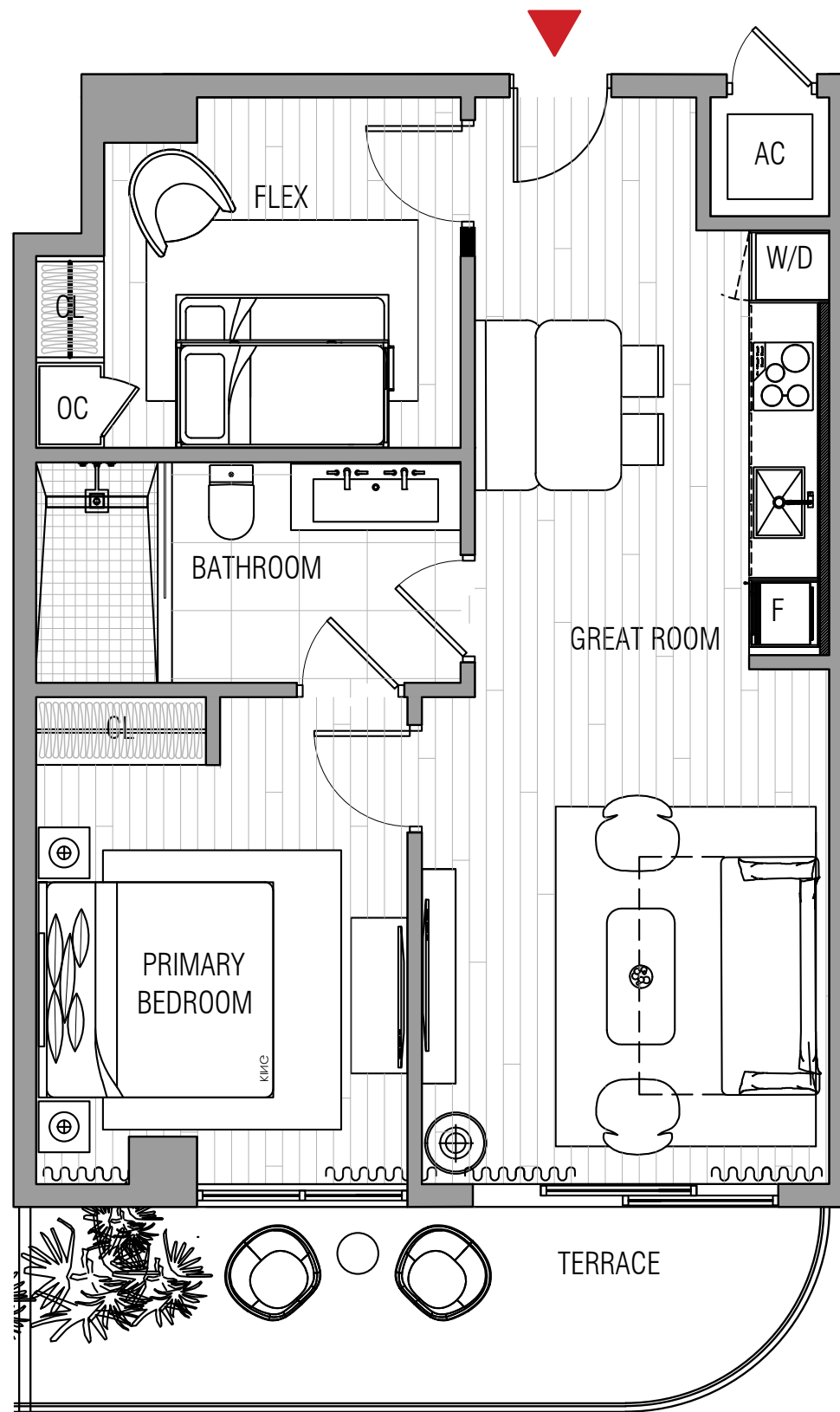
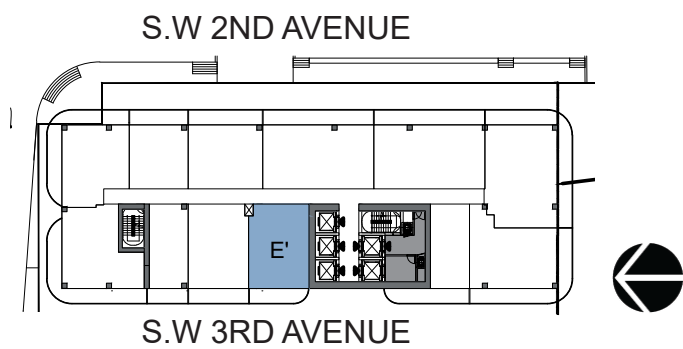


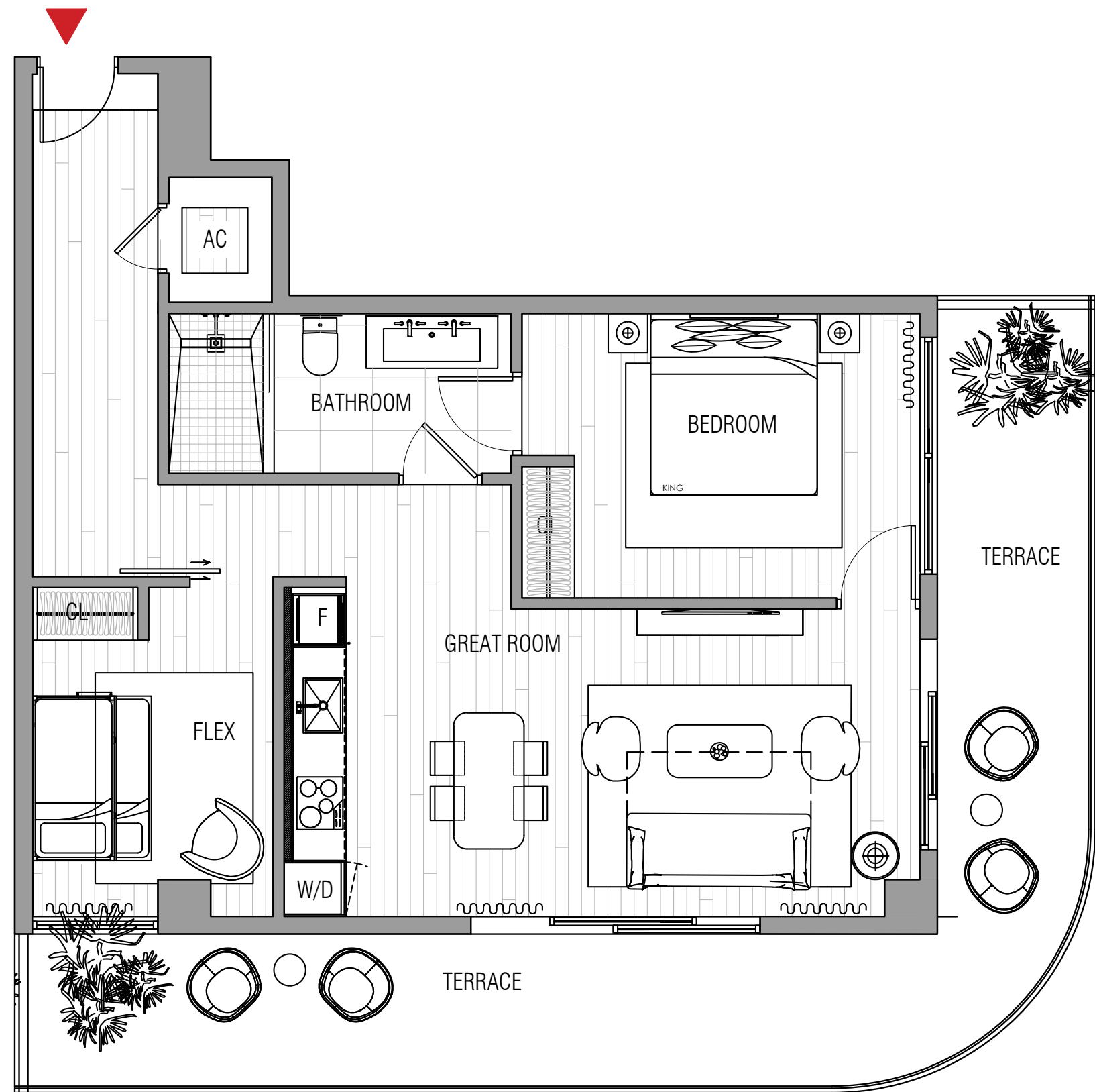


WEST BROWARD



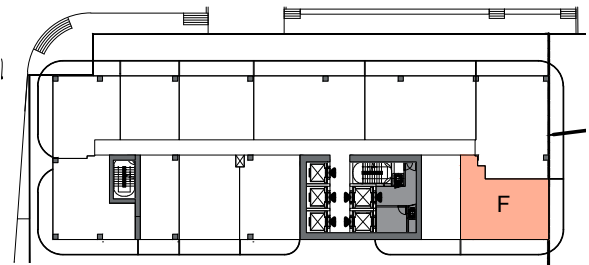
WEST BROWARD





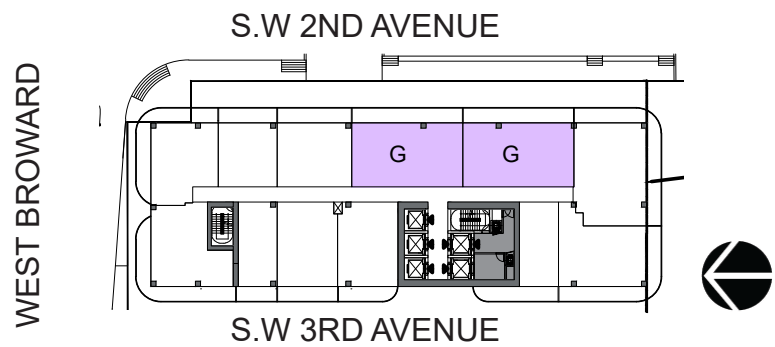
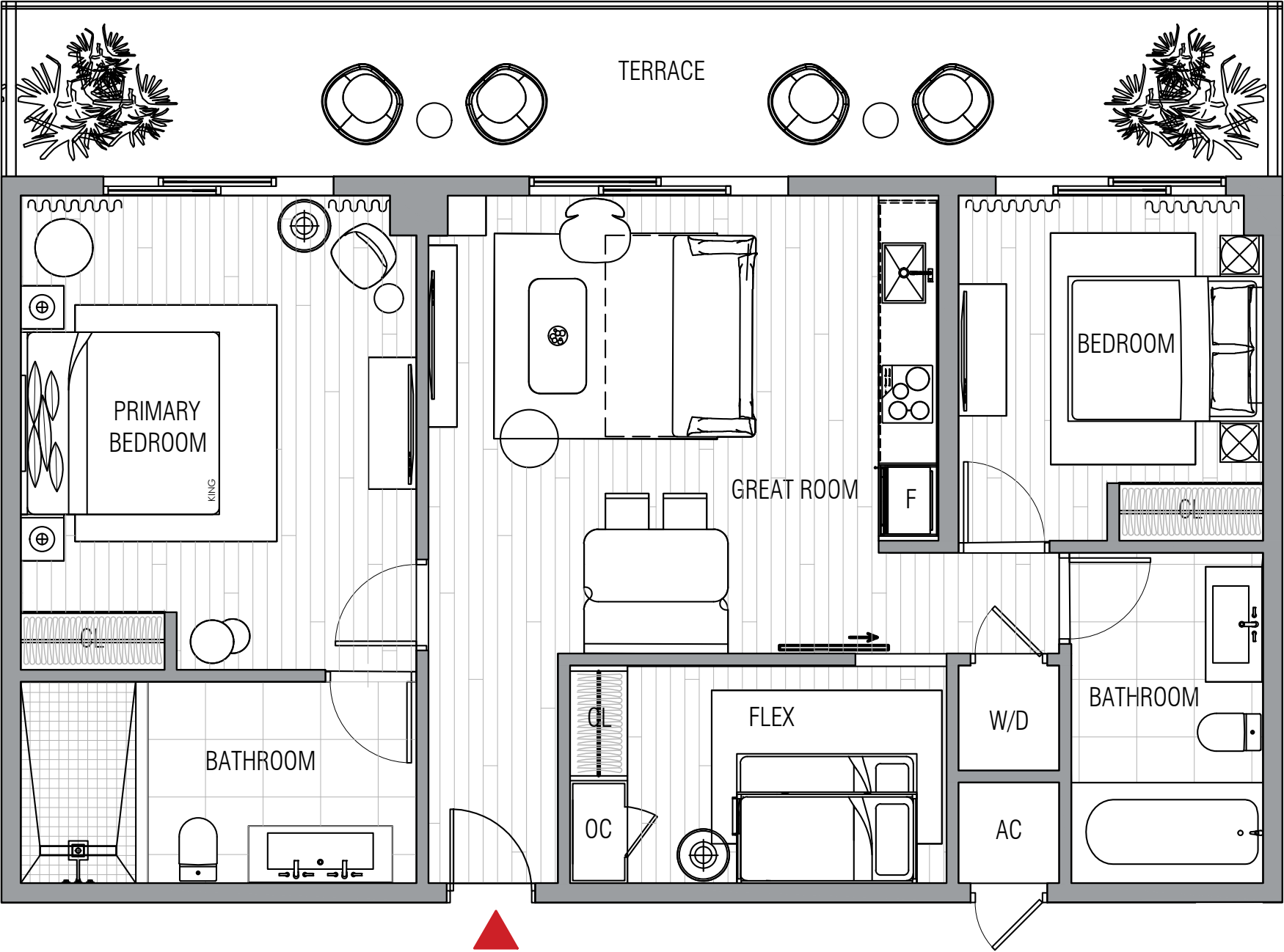
WEST BROWARD

S.W 2ND AVENUE



S.W 3RD AVENUE





WEST BROWARD

