



THE PERIGON

MIAMI BEACH



Vision



VISION

The Perigon Awaits ✦

- ✦ An expanse of 200 linear feet of pristine private shoreline
- ✦ A comprehensive amenity program offering the best of beachfront living
- ✦ 73 signature OMA - designed homes oriented to provide views of the Atlantic Ocean from each residence
- ✦ Two- to four-bedroom residences ranging from 2,100 to 6,700 square feet
- ✦ Gold level LEED certification



Mast Capital

Developer

Mast Capital is a privately held real estate investment and development firm headquartered in Miami. Established in 2006, the firm leverages deep local market perspective and institutional quality to deliver superior execution of transformative developments. Mast Capital’s emphasis is on developing thoughtfully-designed projects that enrich the fabric of local communities throughout Florida.

Starwood Capital

Partner

Starwood Capital Group is a private investment firm with a primary focus on global real estate. Since its inception in 1991, the firm has raised over \$65 billion of capital and currently has over \$110 billion of assets under management. In its pursuit of the most compelling opportunities globally, Starwood Capital has invested in more than 30 countries, ranging from the Americas to Europe to Asia.



Setting



Between the waters of the
Atlantic and Biscayne Bay,
a new residential oasis
without compare



SETTING

In the middle of it all,
but a world apart ✦

Positioned on a tranquil stretch of Miami Beach, this seaside enclave overlooks the infinite blue of the Atlantic Ocean to the east, the peaceful waters of Indian Creek to the west, and an amalgam of beach and cityscapes to the north and south. Paired with unobstructed views of both the rising and setting sun, The Perigon's atmospheric location will keep most from venturing far. But for those seeking adventure beyond secluded shores, the residence's proximity to Bal Harbour, Sunset Harbor, South Beach, and the Design District means that fine dining, boutiques, and entertainment are mere moments away.



Design

Designed by world-renowned
OMA to complement its
blissful setting



DESIGN

Designed by OMA, founded by Rem Koolhaas ✦

Led by OMA New York Partner Jason Long, the architecture was designed as a series of “towers,” rotated to orient and enhance views from all residences toward the Atlantic Ocean, while also optimizing views of Biscayne Bay and the Miami skyline overlooking Miami Beach.



DESIGN

Designed by OMA, founded by Rem Koolhaas ✦

The towers are merged and lifted into a singular form that responds to the panoramic views and frees the ground-plane below, creating the appearance that the building is only gently touching the ground. The resulting reduced footprint maximizes space for the gardens below and the design for the interlocking towers will obtain LEED Gold certification when completed. A subtle contrast in shape between the towers—organic meeting orthogonal—highlights their juxtaposition.



Elegantly proportioned
with graceful details

Responding to OMA's
eloquent, statement
architecture by combining
fresh textured interiors
with a considered, layered,
and timeless aesthetic, The
Perigon's interior design by
Tara Bernerd & Partners
redefines residential living in
Miami Beach.



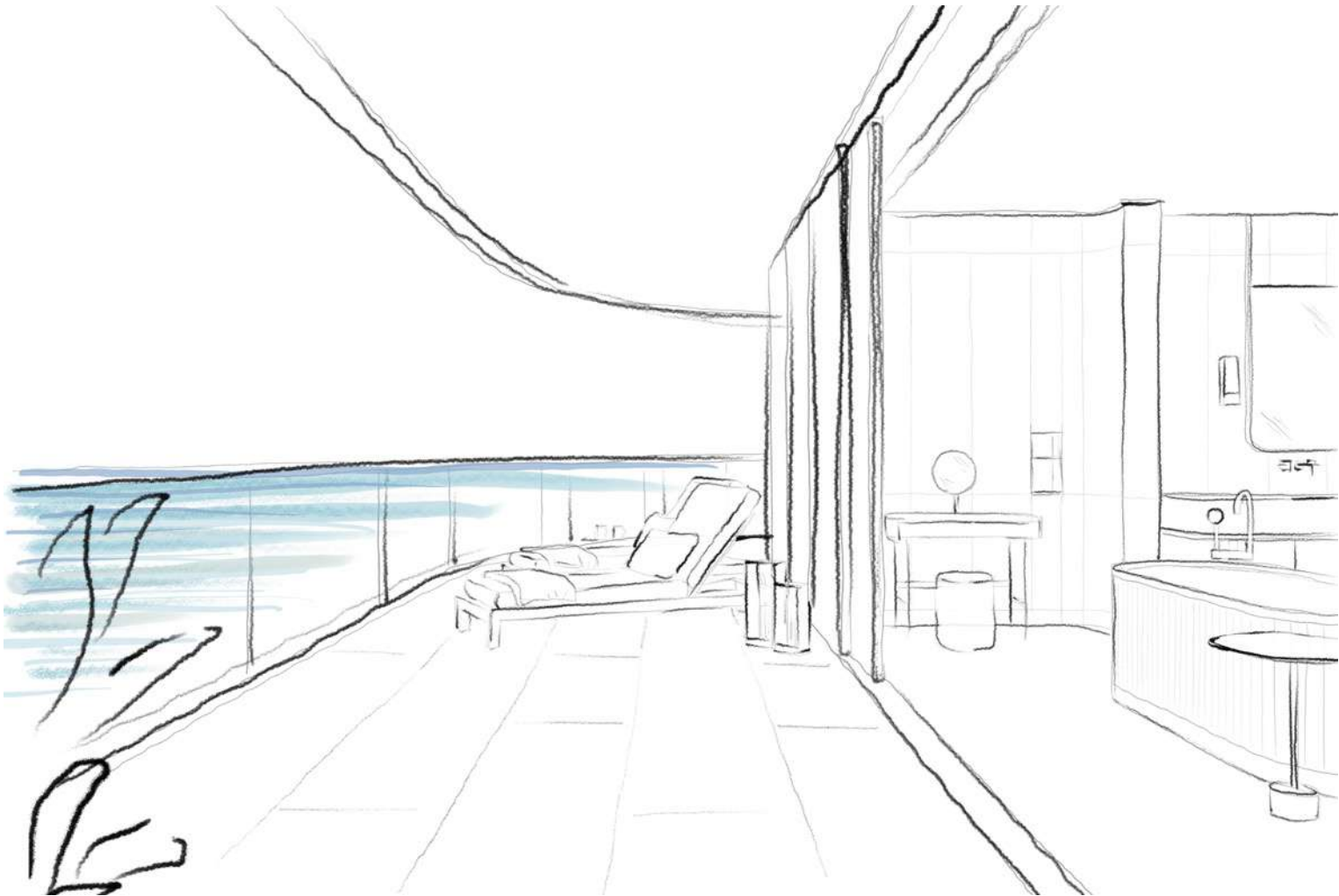
ARTIST'S CONCEPTUAL RENDERING



TARA BERNERD &
PARTNERS ✦

Interiors

Internationally renowned designer Tara Bernerd is the founder of the interior architectural practice Tara Bernerd & Partners. Based in London’s Belgravia, the practice works on a global platform and prides itself on its intelligent approach to interior space planning and design.

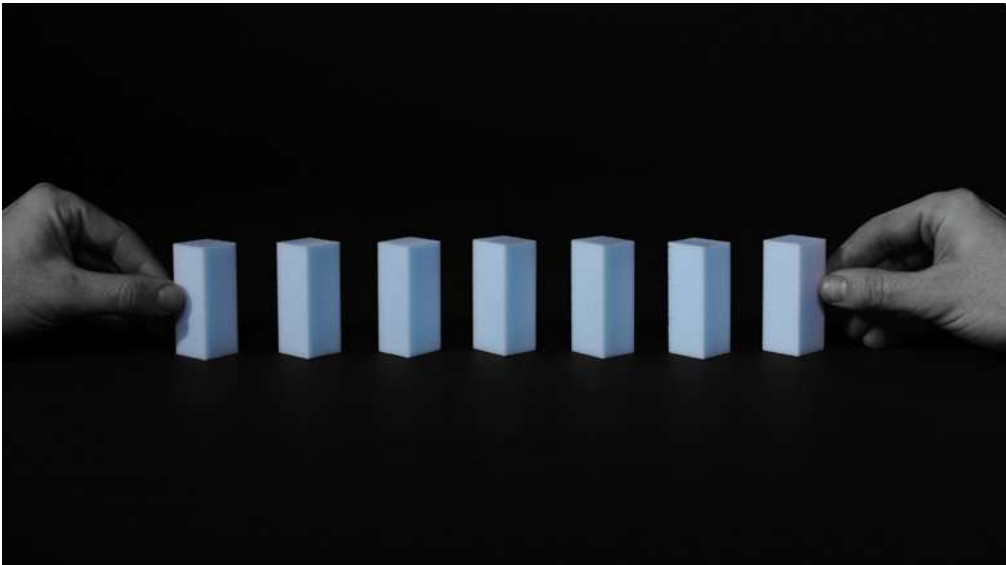




OMA, FOUNDED BY
REM KOOLHAAS ✦

Architecture

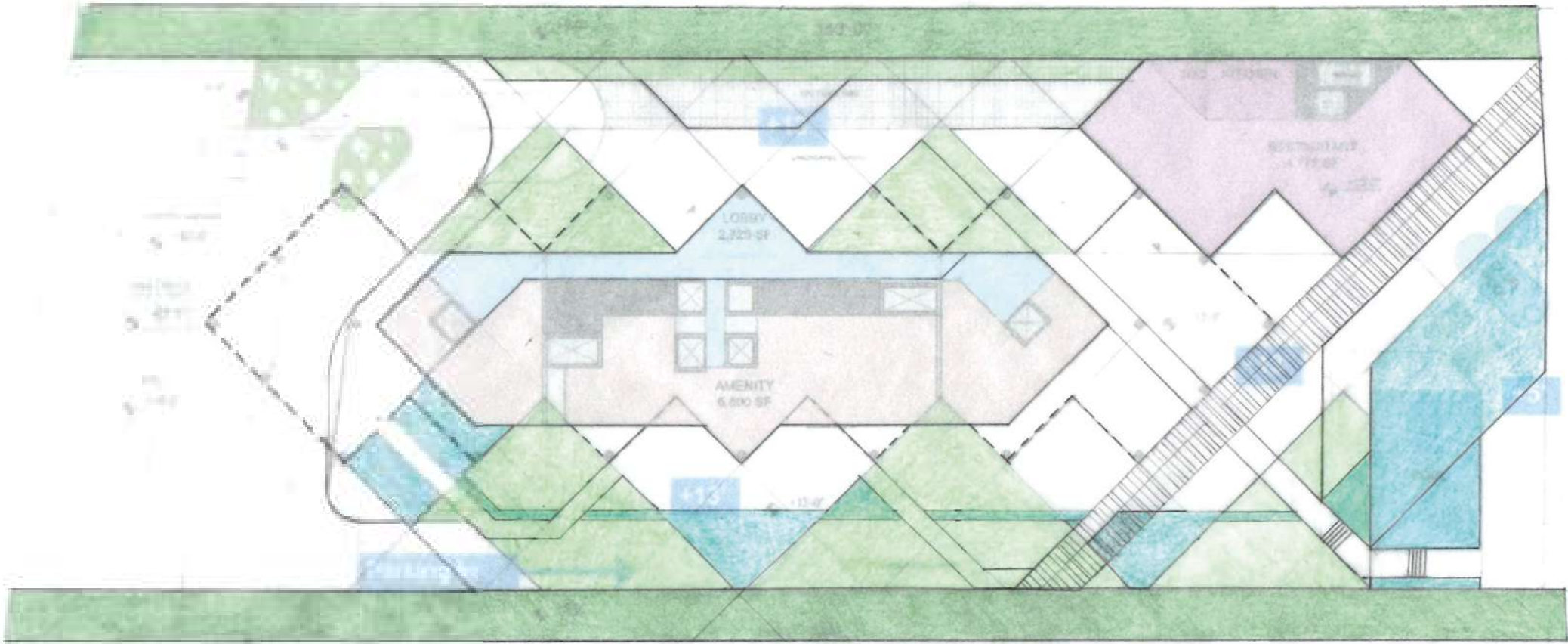
OMA is a leading international practice operating within the traditional boundaries of architecture, urbanism, and cultural analysis. Since its founding in 1975 by critically acclaimed architect Rem Koolhaas, OMA has distinguished itself as one of the most globally recognized firms of its generation. In all projects, OMA strives to go beyond the standard solution, redefine typologies, and invent new possibilities for content and everyday use.





GUSTAFSON PORTER +
BOWMAN ✦
Landscape

Gustafson Porter + Bowman is an award-winning landscape architecture practice that has received public acclaim for creating authentically engaging spaces within a global portfolio. The development of their design work has continuously pushed the boundaries of what constitutes the field of landscape design and is known for its sensual and sculptural features.





Lifestyle





LIFESTYLE

Where every day delights the eye and soothes the senses ✦

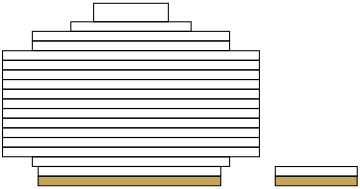
The Perigon was designed to overlook the endless expanse of the Atlantic and storied sands of Miami Beach, and to offer its residents a chance to live in them. Envisaged with a unique indoor-outdoor experience, this waterfront dwelling features an array of luxuries that blur the bounds of interior and exterior space, allowing occupants to unlock the land, water, and surrounding nature from the comfort of their own home.

Amenities ✦

- ✦ Signature oceanfront restaurant by a celebrated chef exclusive to residents
- ✦ Beachside swimming pool and outdoor spa with sunbeds and cabanas
- ✦ Pool and beachside food and beverage service
- ✦ Direct entry to the dedicated beach, equipped with lounge chairs, umbrellas and service
- ✦ Sprawling conservatory offering daily breakfast bar
- ✦ Stylish cocktail lounge and speakeasy
- ✦ Dramatic double-height lobby with open lounge area
- ✦ Luxury guest suites for friends and family
- ✦ Sunrise lounge with catering kitchen for entertaining and events
- ✦ Private spa with sauna and treatment rooms
- ✦ State-of-the-art fitness center with high-impact training room overlooking the Atlantic Ocean
- ✦ Bespoke wine room
- ✦ Private salon for personalized beauty services
- ✦ Screening room
- ✦ Imaginative children’s playroom
- ✦ Intimate garden and meditation lounge areas overlooking the Atlantic
- ✦ Bicycle storage



Ground Floor



SEE DISCLAIMERS PAGE.

- | | | | |
|---------------------|-------------------|----------------------------------|--------------------------------|
| 1 Guard House | 7 Mail Room | 13 Billiard's Room | 19 Sunrise Pool |
| 2 24-Hour Valet | 8 Children's Room | 14 Sunrise Lounge | 20 Spa |
| 3 Lobby Reception | 9 Wine Room | 15 Sunrise Terrace | 21 Private Beach Deck |
| 4 Breakfast Lounge | 10 Wine Garden | 16 Oceanfront Private Restaurant | 22 Gated Resident Beach Access |
| 5 Breakfast Terrace | 11 Screening Room | 17 Oceanfront Bar | 23 Relaxation Garden |
| 6 Parcel Concierge | 12 Meeting Rooms | 18 Cabanas | |

AMENITIES

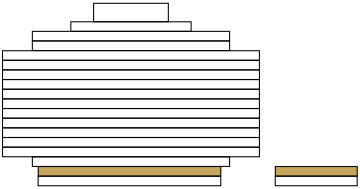
ATLANTIC OCEAN

INTERCOASTAL

COLLINS AVENUE

BEACH WALK

Second Floor



- 1 Wellness Reception
- 2 Cardio Room
- 3 Weight Room
- 4 Yoga & Meditation Terrace

- 5 Fitness Studio
- 6 Salon
- 7 Treatment Room
- 8 Couples Treatment Room

- 9 Experiential Shower
- 10 Infrared Sauna
- 11 Relaxation Lounge
- 12 Relaxation Pool

- 13 Speakeasy
- 14 Private Dining
- 15 Beachfront Rooftop Terrace



LIFESTYLE

Resident Services ✨

- ✕ An expanse of 200 linear feet of pristine private shoreline
- ✕ Residential butler
- ✕ Dedicated lifestyle concierge
- ✕ On-site general manager
- ✕ 24-hour security and valet service
- ✕ House car
- ✕ In-residence dining and catering from signature on-site restaurant
- ✕ Home management services from cleaning and maintenance to floral and pantry stocking*







Signature oceanfront restaurant
by a celebrated chef exclusive to residents



State-of-the-art fitness center
with high-impact training room overlooking the Atlantic Ocean



Private Spa
with sauna and treatment rooms



ARTIST'S CONCEPTUAL RENDERING

Bespoke Wine Room



ARTIST'S CONCEPTUAL RENDERING

Sunrise Lounge
with catering kitchen



ARTIST'S CONCEPTUAL RENDERING

Game Room



ARTIST'S CONCEPTUAL RENDERING

Breakfast Room



Residences



RESIDENCES

Residences rich in style and substance ✦

A true sense of design and sophistication meet in The Perigon's residences, all expertly crafted to maximize the best of Miami's natural elements. Featuring a dynamic composition of clean lines and curvatures, each home complements the building's outer form while drawing the surrounding natural elements in.

RESIDENCES

Residences rich in style and substance ✦

Floor-to-ceiling windows filter light onto every floor, accenting interiors with everchanging hues of the visiting sun. Open and spacious floor plans invite individuals to move and live freely as each room flows to the next. Grand wraparound terraces designed for optimal seclusion seamlessly extend from common areas to create an ocular bridge from land to sea. Immaculate detail, timeless elegance, and depth of coastal views abound.







Expansive living spaces



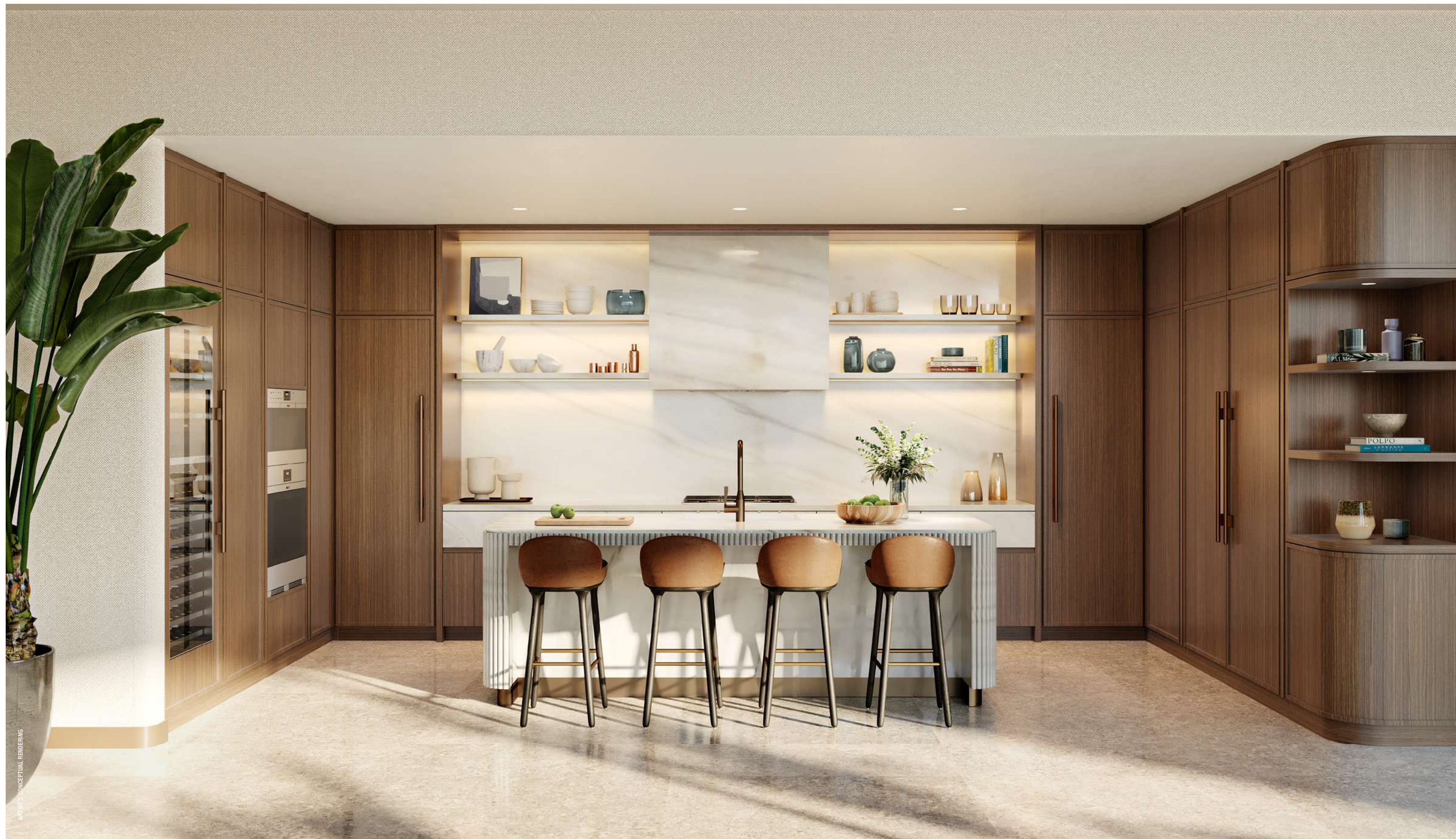
ARTIST'S CONCEPTUAL RENDERING

Open kitchens for entertaining

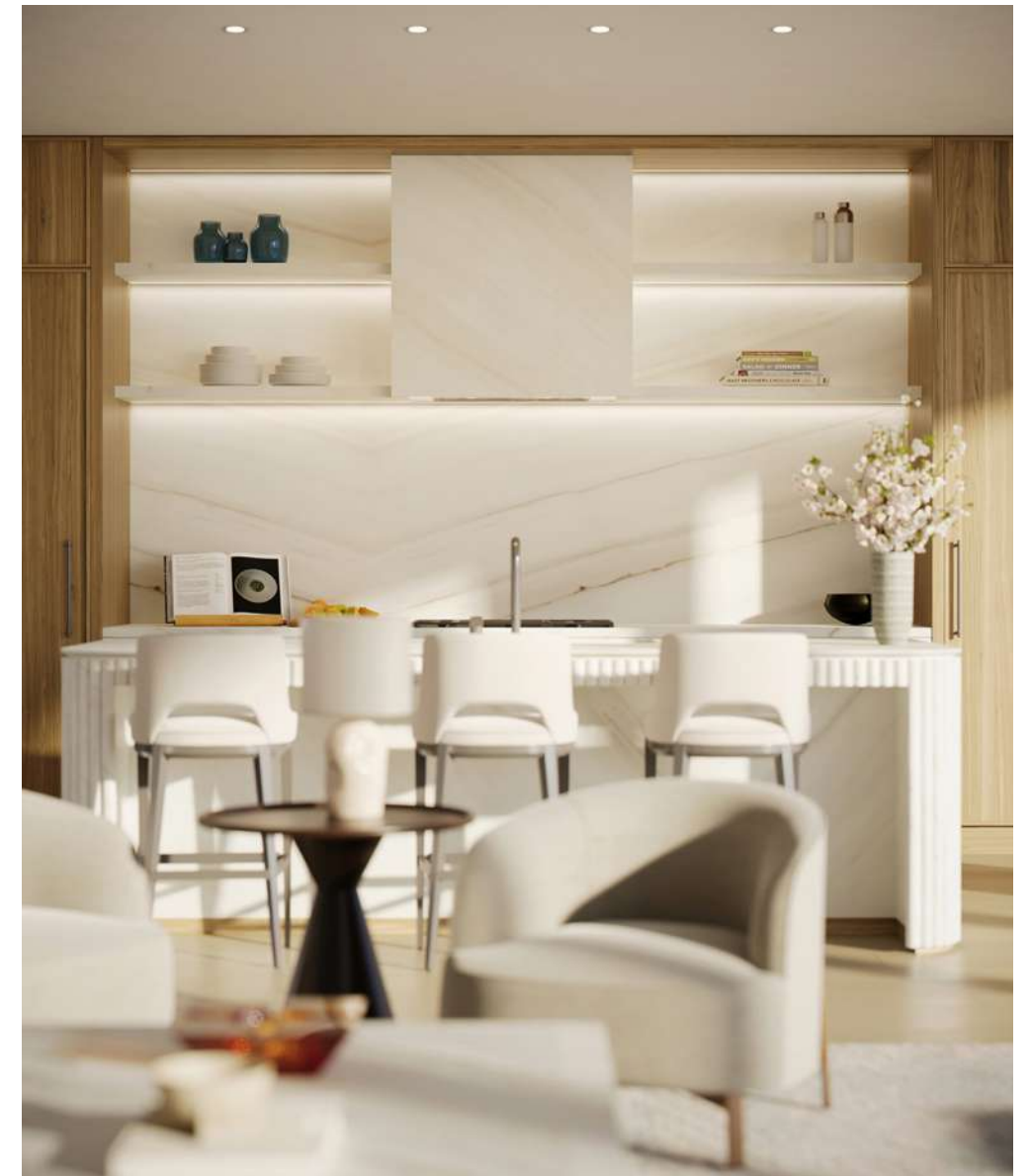


ARTISTS CONCEPTUAL RENDERING

Open kitchens for entertaining



Open kitchens for entertaining



Open kitchens for entertaining



ARTIST'S CONCEPTUAL RENDERING

SEE DISCLAIMERS PAGE.



Open kitchens for entertaining



ARTIST'S CONCEPTUAL RENDERING

Serenity & solitude



ARTIST'S CONCEPTUAL RENDERING

Tranquility









Setting

Discover the Pulse of Miami Beach

● **Beaches & Recreation**

- 1. South Pointe Beach
- 2. South Pointe Park Pier
- 3. Miami Beach Boardwalk
- 4. Lummus Park
- 5. North Beach Oceanside Park
- 6. Indian Creek Country Club
- 7. La Gorce Country Club

● **Shopping**

- 8. Bal Harbour Shops
 - Alexandre Birman
 - BALLY
 - Balmain Paris
 - Brioni
 - Brunello Cucinelli
 - Burberry
 - CHANEL
 - Chloe
 - Chopard
 - FENDI
 - Giuseppe Zanotti
 - Golden Goose
 - Hublot
 - Maison Goyard
 - Marni
 - Missoni
 - Moncler
 - Van Cleef & Arpels
 - Zimmerman
- 9. Aventura Mall
 - Anine Bing
 - Brooks Brothers
 - Ferrari
 - Ganni
 - Gucci
 - Hermes
 - Jimmy Choo
 - Montblanc
 - Restoration Hardware
 - Sandro
 - Y-3

10. Design District

- Alexander McQueen
- Alexis
- Amiri
- Balenciaga
- Bottega Veneta
- BVLGARI
- Cartier
- Celine
- Christian Louboutin
- Dior
- Dolce & Gabbana
- Fendi
- Givenchy
- Gucci
- Hermes
- Hublot
- Isabel Marant
- Loewe
- MiuMiu
- Off-White
- Saint Laurent
- Louis Vuitton
- Prada
- Tiffany & Co
- Tom Ford
- Valentino

11. Lincoln Road Mall

- All Saints
- Scotch & Soda
- SUITSUPPLY
- Ted Baker
- Zadig & Voltaire

12. Brickell City Centre

- Agent Provocateur
- Aqua Di Parma
- Giuseppe Zanotti
- Intermix
- Porsche Design
- Prive Porter
- Richard Mille
- Rolex at Kirk Jewelers
- Saks Fifth Avenue
- Ted Baker
- Violetas + Baccarat

● **Point of Interest**

- 13. Miami International Airport
- 14. Ocean Drive
- 15. Pérez Art Museum Miami
- 16. Phillip and Patricia Frost Museum of Science
- 17. Adrienne Arsht Center

● **Restaurants**

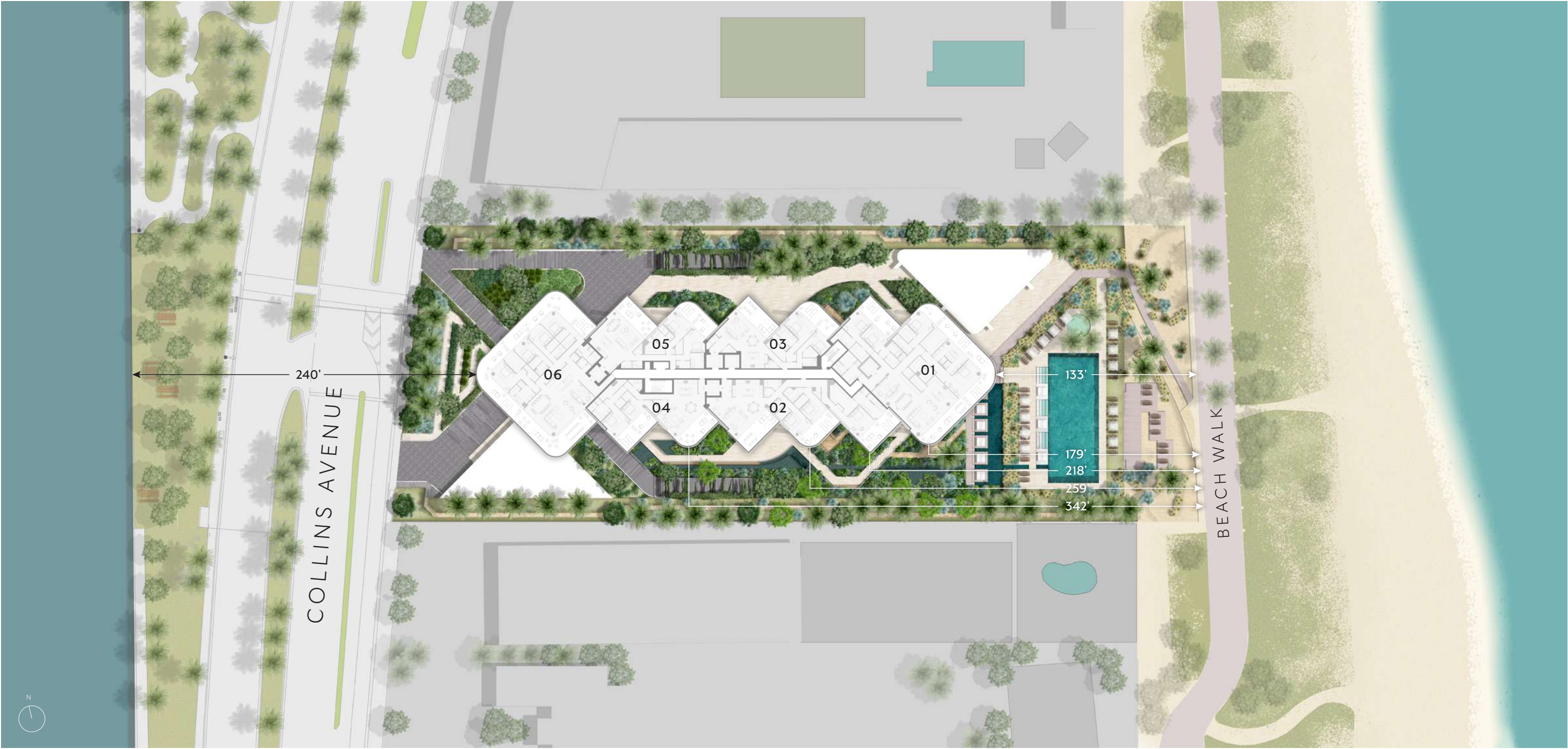
- 18. The Surf Club Restaurant
- 19. Joe’s Stone Crab
- 20. Cecconi’s
- 21. COTE Miami
- 22. The Bazaar By Jose Andres
- 23. Nobu Miami
- 24. Stubborn Seed
- 25. Casa Tua
- 26. Juvia
- 27. HaSalon
- 28. Estiatorio Milos by Costas Spiliadis
- 29. Carbone
- 30. MILA
- 31. Le Jardinier
- 32. L’Atelier de Joël Robuchon





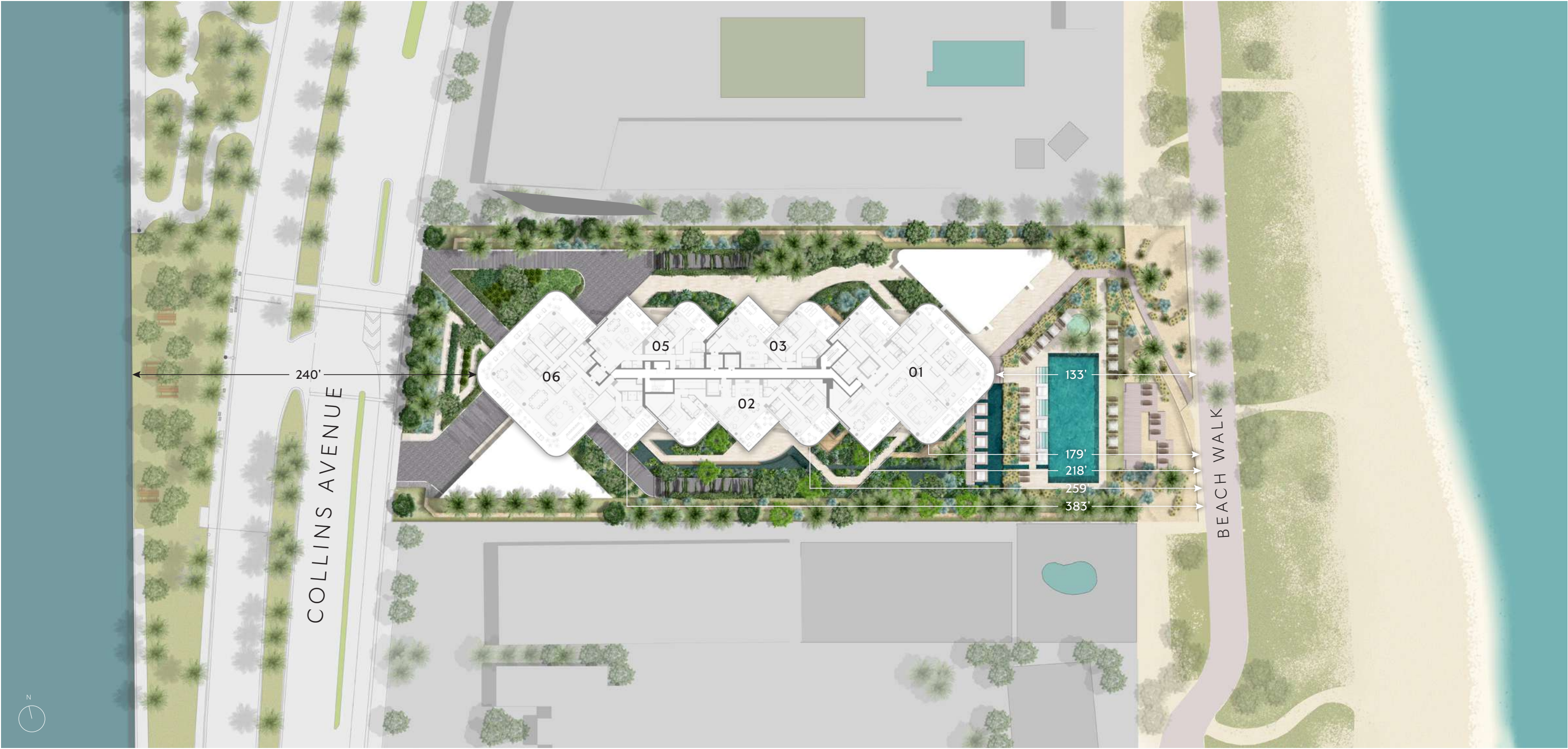
Floor Plans

Site Plan



Floors 4–10

Site Plan



Residence 01

Floors 4–10

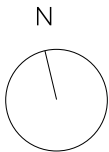
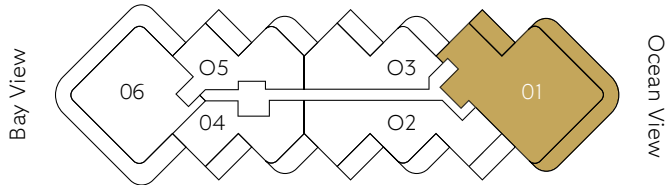
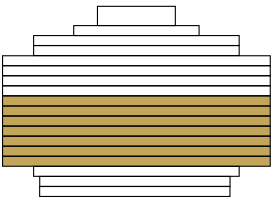
RESIDENCE FEATURES


4 Bedrooms
5 Bathrooms
Powder Room

Interior	4,869 ft ²	452 m ²
Exterior	1,542 ft ²	143 m ²
Total	6,411 ft ²	596 m ²

Views toward Biscayne Bay

Views toward Atlantic Ocean



ORAL REPRESENTATIONS CANNOT BE RELIED UPON AS CORRECTLY STATING THE REPRESENTATIONS OF THE DEVELOPER. FOR CORRECT REPRESENTATIONS, MAKE REFERENCE TO THIS BROCHURE AND TO THE DOCUMENTS REQUIRED BY SECTION 718.503, FLORIDA STATUTES, TO BE FURNISHED BY A DEVELOPER TO A BUYER OR LESSEE. These materials are not intended to be an offer to sell, or solicitation to buy a unit in the condominium. Such an offering shall only be made pursuant to the prospectus (offering circular) for the condominium and no statements should be relied upon unless made in the prospectus or in the applicable purchase agreement. In no event shall any solicitation, offer or sale of a unit in the condominium be made in, or to residents of, any state or country in which such activity would be unlawful. This project is being developed by 5333 Collins Acquisitions, LP, a Delaware limited partnership, which was formed solely for such purpose. Stated square footages and dimensions are measured to the exterior boundaries of the exterior walls and the centerline of interior demising walls and in fact vary from the square footage and dimensions that would be determined by using the description and definition of the "Unit" set forth in the Declaration (which generally only includes the interior airspace between the perimeter walls and excludes all interior structural components and other common elements). This method is generally used in sales materials and is provided to allow a prospective buyer to compare the Units with units in other condominium projects that utilize the same method. For your reference, the area of the Unit, determined in accordance with these defined unit boundaries, is set forth on Exhibit "3" to the Declaration. Measurements of rooms set forth on this floor plan are generally taken at the farthest points of each given room (as if the room were a perfect rectangle), without regard for any cutouts or variations. Accordingly, the area of the actual room will typically be smaller than the product obtained by multiplying the stated length and width. All dimensions are estimates which will vary with actual construction, and all floor plans, specifications and other development plans are subject to change and will not necessarily accurately reflect the final plans and specifications for the development. 

Residence 02

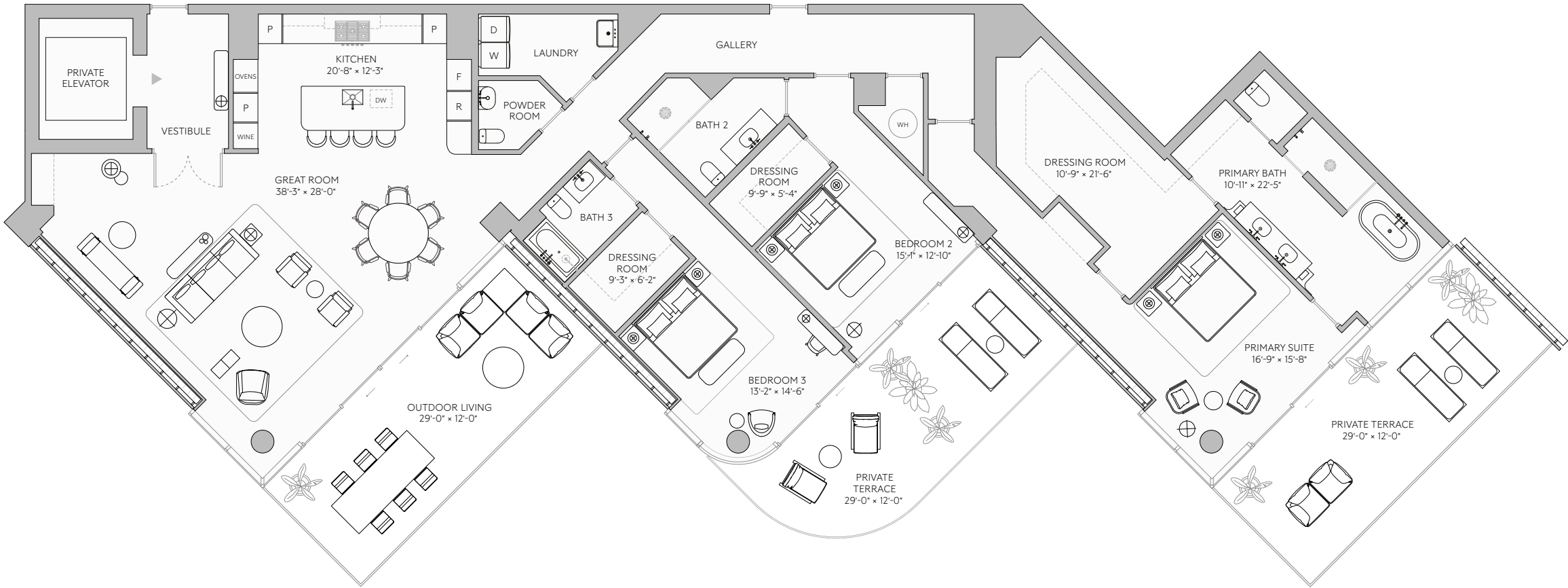
Floors 4–10

RESIDENCE FEATURES

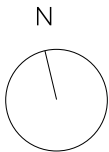
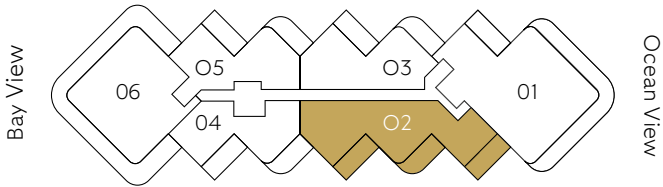
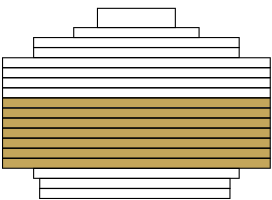
3 Bedrooms
3 Bathrooms
Powder Room


Interior	3,350 ft ²	311 m ²
Exterior	903 ft ²	84 m ²
Total	4,253 ft ²	395 m ²

Views toward Biscayne Bay



Views toward Atlantic Ocean



ORAL REPRESENTATIONS CANNOT BE RELIED UPON AS CORRECTLY STATING THE REPRESENTATIONS OF THE DEVELOPER. FOR CORRECT REPRESENTATIONS, MAKE REFERENCE TO THIS BROCHURE AND TO THE DOCUMENTS REQUIRED BY SECTION 718.503, FLORIDA STATUTES, TO BE FURNISHED BY A DEVELOPER TO A BUYER OR LESSEE. These materials are not intended to be an offer to sell, or solicitation to buy a unit in the condominium. Such an offering shall only be made pursuant to the prospectus (offering circular) for the condominium and no statements should be relied upon unless made in the prospectus or in the applicable purchase agreement. In no event shall any solicitation, offer or sale of a unit in the condominium be made in, or to residents of, any state or country in which such activity would be unlawful. This project is being developed by 5333 Collins Acquisitions, LP, a Delaware limited partnership, which was formed solely for such purpose. Stated square footages and dimensions are measured to the exterior boundaries of the exterior walls and the centerline of interior demising walls and in fact vary from the square footage and dimensions that would be determined by using the description and definition of the "Unit" set forth in the Declaration (which generally only includes the interior airspace between the perimeter walls and excludes all interior structural components and other common elements). This method is generally used in sales materials and is provided to allow a prospective buyer to compare the Units with units in other condominium projects that utilize the same method. For your reference, the area of the Unit, determined in accordance with these defined unit boundaries, is set forth on Exhibit "3" to the Declaration. Measurements of rooms set forth on this floor plan are generally taken at the farthest points of each given room (as if the room were a perfect rectangle), without regard for any cutouts or variations. Accordingly, the area of the actual room will typically be smaller than the product obtained by multiplying the stated length and width. All dimensions are estimates which will vary with actual construction, and all floor plans, specifications and other development plans are subject to change and will not necessarily accurately reflect the final plans and specifications for the development. 

Residence 03

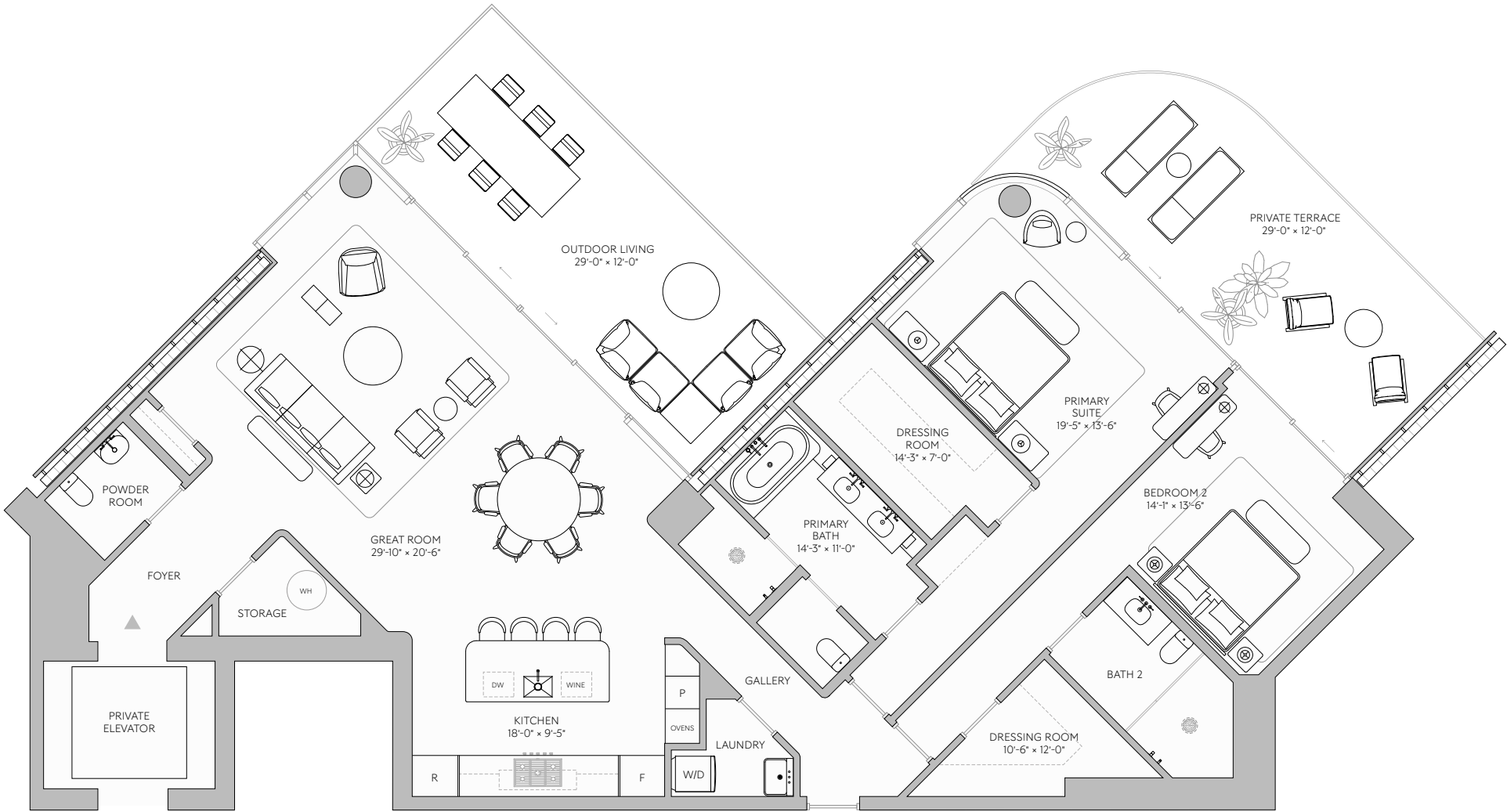
Floors 4–10

RESIDENCE FEATURES

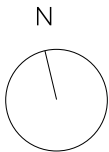
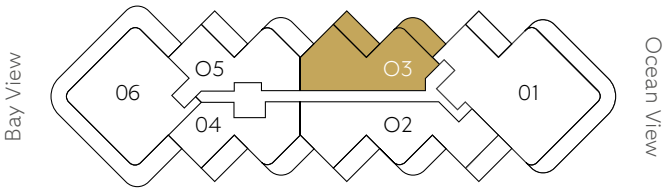
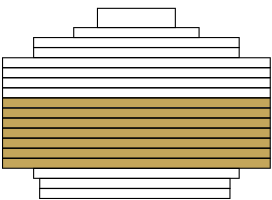
2 Bedrooms
2 Bathrooms
Powder Room


Interior	2,259 ft ²	210 m ²
Exterior	672 ft ²	62 m ²
Total	2,931 ft ²	272 m ²

Views toward Biscayne Bay



Views toward Atlantic Ocean



ORAL REPRESENTATIONS CANNOT BE RELIED UPON AS CORRECTLY STATING THE REPRESENTATIONS OF THE DEVELOPER. FOR CORRECT REPRESENTATIONS, MAKE REFERENCE TO THIS BROCHURE AND TO THE DOCUMENTS REQUIRED BY SECTION 718.503, FLORIDA STATUTES, TO BE FURNISHED BY A DEVELOPER TO A BUYER OR LESSEE. These materials are not intended to be an offer to sell, or solicitation to buy a unit in the condominium. Such an offering shall only be made pursuant to the prospectus (offering circular) for the condominium and no statements should be relied upon unless made in the prospectus or in the applicable purchase agreement. In no event shall any solicitation, offer or sale of a unit in the condominium be made in, or to residents of, any state or country in which such activity would be unlawful. This project is being developed by 5333 Collins Acquisitions, LP, a Delaware limited partnership, which was formed solely for such purpose. Stated square footages and dimensions are measured to the exterior boundaries of the exterior walls and the centerline of interior demising walls and in fact vary from the square footage and dimensions that would be determined by using the description and definition of the "Unit" set forth in the Declaration (which generally only includes the interior airspace between the perimeter walls and excludes all interior structural components and other common elements). This method is generally used in sales materials and is provided to allow a prospective buyer to compare the Units with units in other condominium projects that utilize the same method. For your reference, the area of the Unit, determined in accordance with these defined unit boundaries, is set forth on Exhibit "3" to the Declaration. Measurements of rooms set forth on this floor plan are generally taken at the farthest points of each given room (as if the room were a perfect rectangle), without regard for any cutouts or variations. Accordingly, the area of the actual room will typically be smaller than the product obtained by multiplying the stated length and width. All dimensions are estimates which will vary with actual construction, and all floor plans, specifications and other development plans are subject to change and will not necessarily accurately reflect the final plans and specifications for the development. 

Residence 04

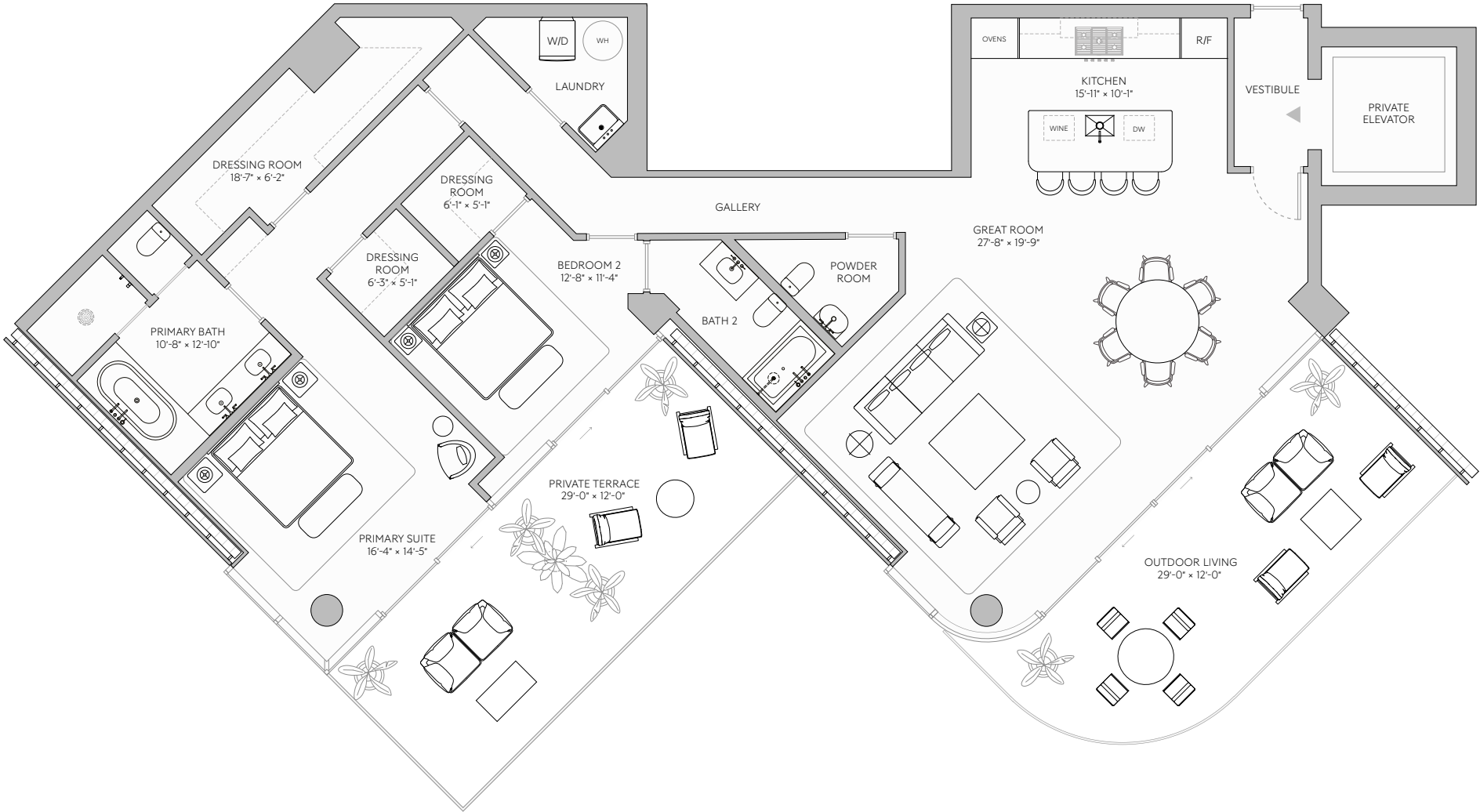
Floors 4–10

RESIDENCE FEATURES

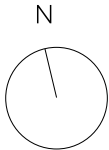
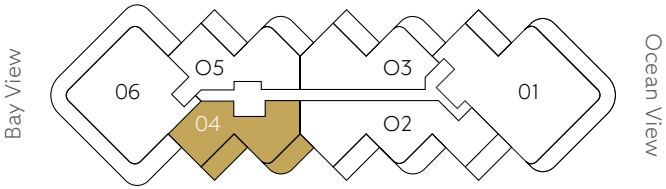
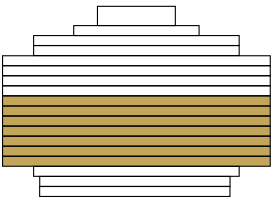
2 Bedrooms
2 Bathrooms
Powder Room


Interior	2,121 ft ²	197 m ²
Exterior	593 ft ²	55 m ²
Total	2,714 ft ²	252 m ²

Views toward Biscayne Bay



Views toward Atlantic Ocean



ORAL REPRESENTATIONS CANNOT BE RELIED UPON AS CORRECTLY STATING THE REPRESENTATIONS OF THE DEVELOPER. FOR CORRECT REPRESENTATIONS, MAKE REFERENCE TO THIS BROCHURE AND TO THE DOCUMENTS REQUIRED BY SECTION 718.503, FLORIDA STATUTES, TO BE FURNISHED BY A DEVELOPER TO A BUYER OR LESSEE. These materials are not intended to be an offer to sell, or solicitation to buy a unit in the condominium. Such an offering shall only be made pursuant to the prospectus (offering circular) for the condominium and no statements should be relied upon unless made in the prospectus or in the applicable purchase agreement. In no event shall any solicitation, offer or sale of a unit in the condominium be made in, or to residents of, any state or country in which such activity would be unlawful. This project is being developed by 5333 Collins Acquisitions, LP, a Delaware limited partnership, which was formed solely for such purpose. Stated square footages and dimensions are measured to the exterior boundaries of the exterior walls and the centerline of interior demising walls and in fact vary from the square footage and dimensions that would be determined by using the description and definition of the "Unit" set forth in the Declaration (which generally only includes the interior airspace between the perimeter walls and excludes all interior structural components and other common elements). This method is generally used in sales materials and is provided to allow a prospective buyer to compare the Units with units in other condominium projects that utilize the same method. For your reference, the area of the Unit, determined in accordance with these defined unit boundaries, is set forth on Exhibit "3" to the Declaration. Measurements of rooms set forth on this floor plan are generally taken at the farthest points of each given room (as if the room were a perfect rectangle), without regard for any cutouts or variations. Accordingly, the area of the actual room will typically be smaller than the product obtained by multiplying the stated length and width. All dimensions are estimates which will vary with actual construction, and all floor plans, specifications and other development plans are subject to change and will not necessarily accurately reflect the final plans and specifications for the development. 

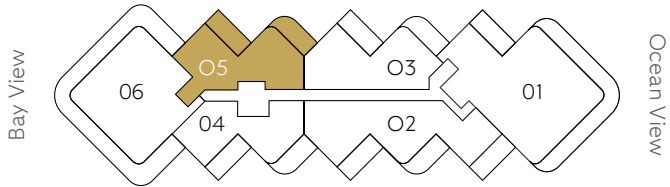
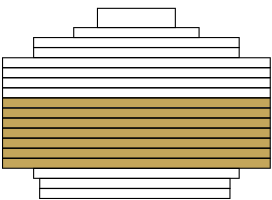
Residence 05

Floors 4–10

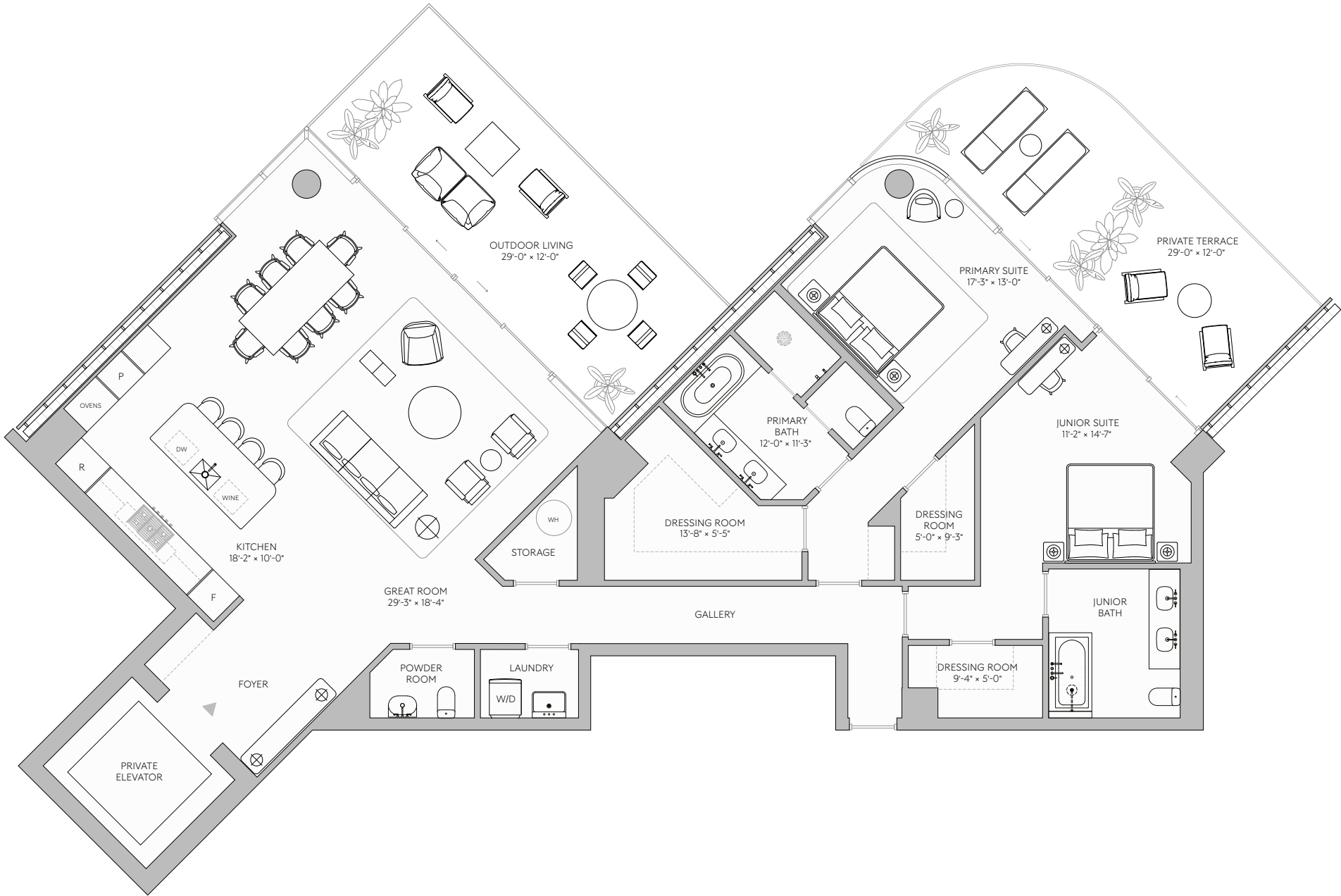
RESIDENCE FEATURES

- 2 Bedrooms
- 2 Bathrooms
- Powder Room


Interior	2,300 ft ²	214 m ²
Exterior	673 ft ²	63 m ²
Total	2,973 ft ²	276 m ²



Views toward Biscayne Bay



Views toward Atlantic Ocean

ORAL REPRESENTATIONS CANNOT BE RELIED UPON AS CORRECTLY STATING THE REPRESENTATIONS OF THE DEVELOPER. FOR CORRECT REPRESENTATIONS, MAKE REFERENCE TO THIS BROCHURE AND TO THE DOCUMENTS REQUIRED BY SECTION 718.503, FLORIDA STATUTES, TO BE FURNISHED BY A DEVELOPER TO A BUYER OR LESSEE. These materials are not intended to be an offer to sell, or solicitation to buy a unit in the condominium. Such an offering shall only be made pursuant to the prospectus (offering circular) for the condominium and no statements should be relied upon unless made in the prospectus or in the applicable purchase agreement. In no event shall any solicitation, offer or sale of a unit in the condominium be made in, or to residents of, any state or country in which such activity would be unlawful. This project is being developed by 5333 Collins Acquisitions, LP, a Delaware limited partnership, which was formed solely for such purpose. Stated square footages and dimensions are measured to the exterior boundaries of the exterior walls and the centerline of interior demising walls and in fact vary from the square footage and dimensions that would be determined by using the description and definition of the "Unit" set forth in the Declaration (which generally only includes the interior airspace between the perimeter walls and excludes all interior structural components and other common elements). This method is generally used in sales materials and is provided to allow a prospective buyer to compare the Units with units in other condominium projects that utilize the same method. For your reference, the area of the Unit, determined in accordance with these defined unit boundaries, is set forth on Exhibit "3" to the Declaration. Measurements of rooms set forth on this floor plan are generally taken at the farthest points of each given room (as if the room were a perfect rectangle), without regard for any cutouts or variations. Accordingly, the area of the actual room will typically be smaller than the product obtained by multiplying the stated length and width. All dimensions are estimates which will vary with actual construction, and all floor plans, specifications and other development plans are subject to change and will not necessarily accurately reflect the final plans and specifications for the development. 

Residence 06

Floors 4–10

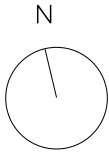
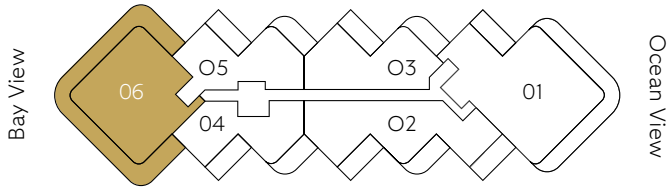
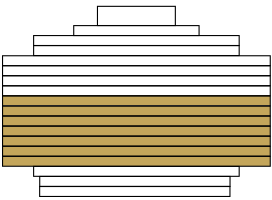
RESIDENCE FEATURES


4 Bedrooms
5 Bathrooms
Powder Room

Interior	3,808 ft ²	354 m ²
Exterior	2,240 ft ²	208 m ²
Total	6,048 ft ²	562 m ²

Views toward Biscayne Bay

Views toward Atlantic Ocean



ORAL REPRESENTATIONS CANNOT BE RELIED UPON AS CORRECTLY STATING THE REPRESENTATIONS OF THE DEVELOPER. FOR CORRECT REPRESENTATIONS, MAKE REFERENCE TO THIS BROCHURE AND TO THE DOCUMENTS REQUIRED BY SECTION 718.503, FLORIDA STATUTES, TO BE FURNISHED BY A DEVELOPER TO A BUYER OR LESSEE. These materials are not intended to be an offer to sell, or solicitation to buy a unit in the condominium. Such an offering shall only be made pursuant to the prospectus (offering circular) for the condominium and no statements should be relied upon unless made in the prospectus or in the applicable purchase agreement. In no event shall any solicitation, offer or sale of a unit in the condominium be made in, or to residents of, any state or country in which such activity would be unlawful. This project is being developed by 5333 Collins Acquisitions, LP, a Delaware limited partnership, which was formed solely for such purpose. Stated square footages and dimensions are measured to the exterior boundaries of the exterior walls and the centerline of interior demising walls and in fact vary from the square footage and dimensions that would be determined by using the description and definition of the "Unit" set forth in the Declaration (which generally only includes the interior airspace between the perimeter walls and excludes all interior structural components and other common elements). This method is generally used in sales materials and is provided to allow a prospective buyer to compare the Units with units in other condominium projects that utilize the same method. For your reference, the area of the Unit, determined in accordance with these defined unit boundaries, is set forth on Exhibit "3" to the Declaration. Measurements of rooms set forth on this floor plan are generally taken at the farthest points of each given room (as if the room were a perfect rectangle), without regard for any cutouts or variations. Accordingly, the area of the actual room will typically be smaller than the product obtained by multiplying the stated length and width. All dimensions are estimates which will vary with actual construction, and all floor plans, specifications and other development plans are subject to change and will not necessarily accurately reflect the final plans and specifications for the development. 

Residence 01

Floors 11–15

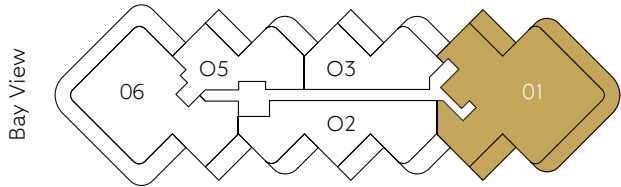
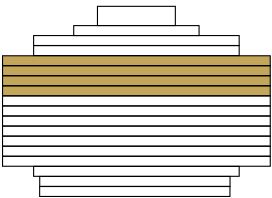
RESIDENCE FEATURES

4 Bedrooms
5 Bathrooms
Powder Room

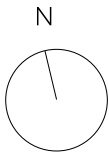
Interior	5,778 ft ²	537 m ²
Exterior	1,772 ft ²	165 m ²
Total	7,550 ft ²	701 m ²


Views toward Biscayne Bay

Views toward Atlantic Ocean



Ocean View



ORAL REPRESENTATIONS CANNOT BE RELIED UPON AS CORRECTLY STATING THE REPRESENTATIONS OF THE DEVELOPER. FOR CORRECT REPRESENTATIONS, MAKE REFERENCE TO THIS BROCHURE AND TO THE DOCUMENTS REQUIRED BY SECTION 718.503, FLORIDA STATUTES, TO BE FURNISHED BY A DEVELOPER TO A BUYER OR LESSEE. These materials are not intended to be an offer to sell, or solicitation to buy a unit in the condominium. Such an offering shall only be made pursuant to the prospectus (offering circular) for the condominium and no statements should be relied upon unless made in the prospectus or in the applicable purchase agreement. In no event shall any solicitation, offer or sale of a unit in the condominium be made in, or to residents of, any state or country in which such activity would be unlawful. This project is being developed by 5333 Collins Acquisitions, LP, a Delaware limited partnership, which was formed solely for such purpose. Stated square footages and dimensions are measured to the exterior boundaries of the exterior walls and the centerline of interior demising walls and in fact vary from the square footage and dimensions that would be determined by using the description and definition of the "Unit" set forth in the Declaration (which generally only includes the interior airspace between the perimeter walls and excludes all interior structural components and other common elements). This method is generally used in sales materials and is provided to allow a prospective buyer to compare the Units with units in other condominium projects that utilize the same method. For your reference, the area of the Unit, determined in accordance with these defined unit boundaries, is set forth on Exhibit "3" to the Declaration. Measurements of rooms set forth on this floor plan are generally taken at the farthest points of each given room (as if the room were a perfect rectangle), without regard for any cutouts or variations. Accordingly, the area of the actual room will typically be smaller than the product obtained by multiplying the stated length and width. All dimensions are estimates which will vary with actual construction, and all floor plans, specifications and other development plans are subject to change and will not necessarily accurately reflect the final plans and specifications for the development. 

Residence 02

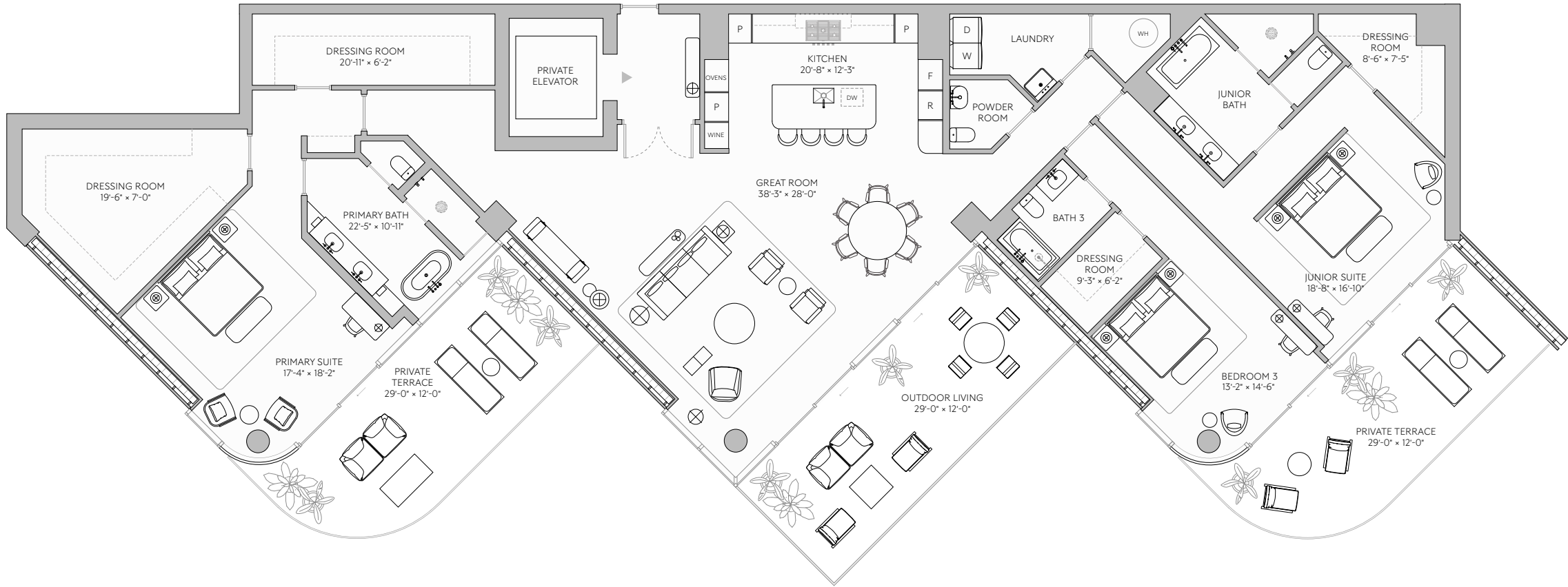
Floors 11–15

RESIDENCE FEATURES

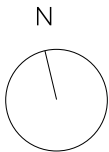
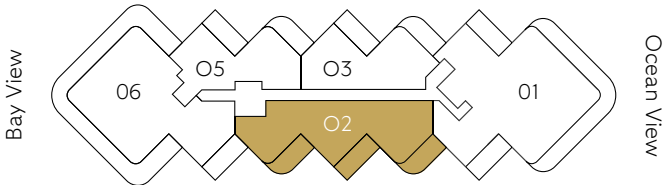
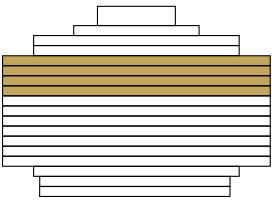
3 Bedrooms
3 Bathrooms
Powder Room


Interior	3,528 ft ²	328 m ²
Exterior	918 ft ²	85 m ²
Total	4,446 ft ²	413 m ²

Views toward Biscayne Bay



Views toward Atlantic Ocean



ORAL REPRESENTATIONS CANNOT BE RELIED UPON AS CORRECTLY STATING THE REPRESENTATIONS OF THE DEVELOPER. FOR CORRECT REPRESENTATIONS, MAKE REFERENCE TO THIS BROCHURE AND TO THE DOCUMENTS REQUIRED BY SECTION 718.503, FLORIDA STATUTES, TO BE FURNISHED BY A DEVELOPER TO A BUYER OR LESSEE. These materials are not intended to be an offer to sell, or solicitation to buy a unit in the condominium. Such an offering shall only be made pursuant to the prospectus (offering circular) for the condominium and no statements should be relied upon unless made in the prospectus or in the applicable purchase agreement. In no event shall any solicitation, offer or sale of a unit in the condominium be made in, or to residents of, any state or country in which such activity would be unlawful. This project is being developed by 5333 Collins Acquisitions, LP, a Delaware limited partnership, which was formed solely for such purpose. Stated square footages and dimensions are measured to the exterior boundaries of the exterior walls and the centerline of interior demising walls and in fact vary from the square footage and dimensions that would be determined by using the description and definition of the "Unit" set forth in the Declaration (which generally only includes the interior airspace between the perimeter walls and excludes all interior structural components and other common elements). This method is generally used in sales materials and is provided to allow a prospective buyer to compare the Units with units in other condominium projects that utilize the same method. For your reference, the area of the Unit, determined in accordance with these defined unit boundaries, is set forth on Exhibit "3" to the Declaration. Measurements of rooms set forth on this floor plan are generally taken at the farthest points of each given room (as if the room were a perfect rectangle), without regard for any cutouts or variations. Accordingly, the area of the actual room will typically be smaller than the product obtained by multiplying the stated length and width. All dimensions are estimates which will vary with actual construction, and all floor plans, specifications and other development plans are subject to change and will not necessarily accurately reflect the final plans and specifications for the development. 

Residence 03

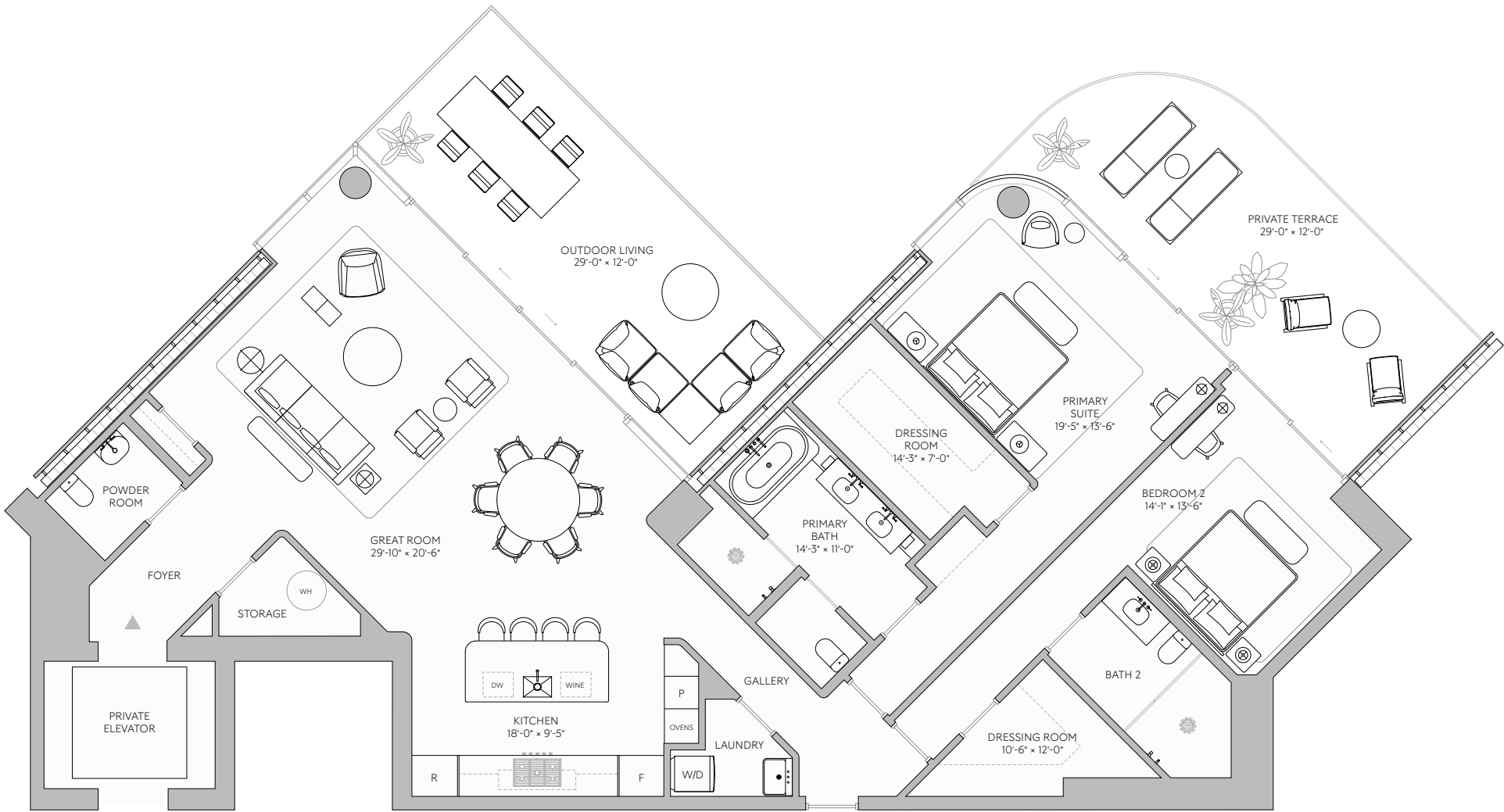
Floors 11–15

RESIDENCE FEATURES

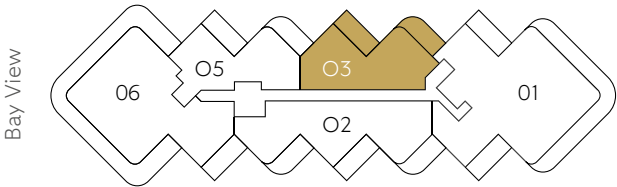
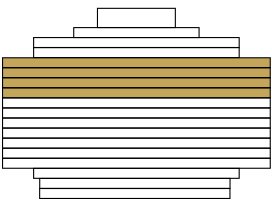
2 Bedrooms
2 Bathrooms
Powder Room

Interior	2,261 ft ²	210 m ²
Exterior	672 ft ²	62 m ²
Total	2,933 ft ²	272 m ²

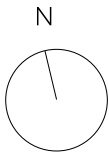
Views toward Biscayne Bay




Views toward Atlantic Ocean



Ocean View



ORAL REPRESENTATIONS CANNOT BE RELIED UPON AS CORRECTLY STATING THE REPRESENTATIONS OF THE DEVELOPER. FOR CORRECT REPRESENTATIONS, MAKE REFERENCE TO THIS BROCHURE AND TO THE DOCUMENTS REQUIRED BY SECTION 718.503, FLORIDA STATUTES, TO BE FURNISHED BY A DEVELOPER TO A BUYER OR LESSEE. These materials are not intended to be an offer to sell, or solicitation to buy a unit in the condominium. Such an offering shall only be made pursuant to the prospectus (offering circular) for the condominium and no statements should be relied upon unless made in the prospectus or in the applicable purchase agreement. In no event shall any solicitation, offer or sale of a unit in the condominium be made in, or to residents of, any state or country in which such activity would be unlawful. This project is being developed by 5333 Collins Acquisitions, LP, a Delaware limited partnership, which was formed solely for such purpose. Stated square footages and dimensions are measured to the exterior boundaries of the exterior walls and the centerline of interior demising walls and in fact vary from the square footage and dimensions that would be determined by using the description and definition of the "Unit" set forth in the Declaration (which generally only includes the interior airspace between the perimeter walls and excludes all interior structural components and other common elements). This method is generally used in sales materials and is provided to allow a prospective buyer to compare the Units with units in other condominium projects that utilize the same method. For your reference, the area of the Unit, determined in accordance with these defined unit boundaries, is set forth on Exhibit "3" to the Declaration. Measurements of rooms set forth on this floor plan are generally taken at the farthest points of each given room (as if the room were a perfect rectangle), without regard for any cutouts or variations. Accordingly, the area of the actual room will typically be smaller than the product obtained by multiplying the stated length and width. All dimensions are estimates which will vary with actual construction, and all floor plans, specifications and other development plans are subject to change and will not necessarily accurately reflect the final plans and specifications for the development. 

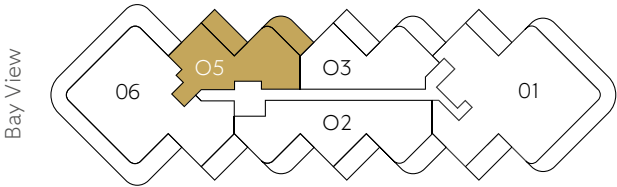
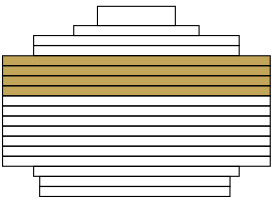
Residence 05

Floors 11–15

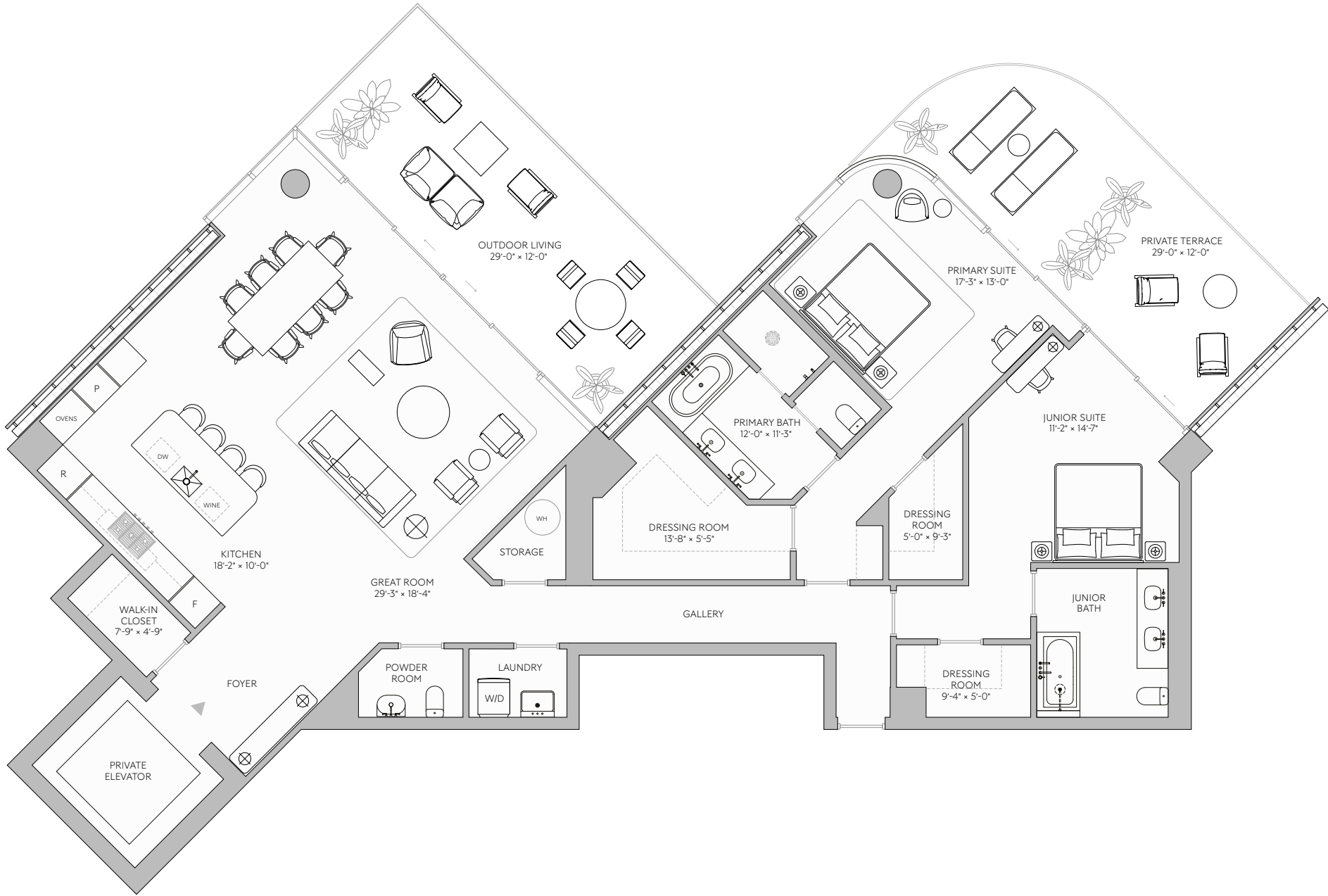
RESIDENCE FEATURES

- 2 Bedrooms
- 2 Bathrooms
- Powder Room

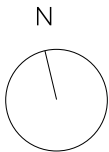
Interior	2,409 ft ²	224 m ²
Exterior	673 ft ²	63 m ²
Total	3,082 ft ²	287 m ²




Views toward Biscayne Bay



Views toward Atlantic Ocean



ORAL REPRESENTATIONS CANNOT BE RELIED UPON AS CORRECTLY STATING THE REPRESENTATIONS OF THE DEVELOPER. FOR CORRECT REPRESENTATIONS, MAKE REFERENCE TO THIS BROCHURE AND TO THE DOCUMENTS REQUIRED BY SECTION 718.503, FLORIDA STATUTES, TO BE FURNISHED BY A DEVELOPER TO A BUYER OR LESSEE. These materials are not intended to be an offer to sell, or solicitation to buy a unit in the condominium. Such an offering shall only be made pursuant to the prospectus (offering circular) for the condominium and no statements should be relied upon unless made in the prospectus or in the applicable purchase agreement. In no event shall any solicitation, offer or sale of a unit in the condominium be made in, or to residents of, any state or country in which such activity would be unlawful. This project is being developed by 5333 Collins Acquisitions, LP, a Delaware limited partnership, which was formed solely for such purpose. Stated square footages and dimensions are measured to the exterior boundaries of the exterior walls and the centerline of interior demising walls and in fact vary from the square footage and dimensions that would be determined by using the description and definition of the "Unit" set forth in the Declaration (which generally only includes the interior airspace between the perimeter walls and excludes all interior structural components and other common elements). This method is generally used in sales materials and is provided to allow a prospective buyer to compare the Units with units in other condominium projects that utilize the same method. For your reference, the area of the Unit, determined in accordance with these defined unit boundaries, is set forth on Exhibit "3" to the Declaration. Measurements of rooms set forth on this floor plan are generally taken at the farthest points of each given room (as if the room were a perfect rectangle), without regard for any cutouts or variations. Accordingly, the area of the actual room will typically be smaller than the product obtained by multiplying the stated length and width. All dimensions are estimates which will vary with actual construction, and all floor plans, specifications and other development plans are subject to change and will not necessarily accurately reflect the final plans and specifications for the development. 

Residence 06

Floors 11–15

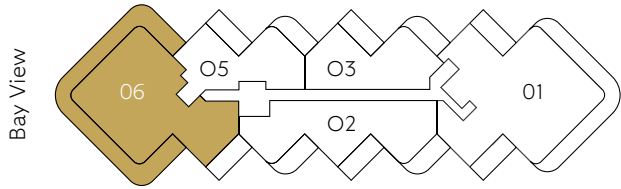
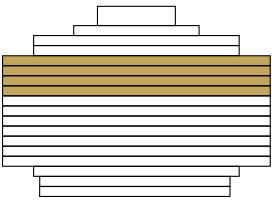
RESIDENCE FEATURES

4 Bedrooms
5 Bathrooms
Powder Room

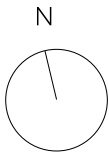
Interior	4,784 ft ²	444 m ²
Exterior	2,334 ft ²	217 m ²
Total	7,118 ft ²	661 m ²


Views toward Biscayne Bay

Views toward Atlantic Ocean



Ocean View



ORAL REPRESENTATIONS CANNOT BE RELIED UPON AS CORRECTLY STATING THE REPRESENTATIONS OF THE DEVELOPER. FOR CORRECT REPRESENTATIONS, MAKE REFERENCE TO THIS BROCHURE AND TO THE DOCUMENTS REQUIRED BY SECTION 718.503, FLORIDA STATUTES, TO BE FURNISHED BY A DEVELOPER TO A BUYER OR LESSEE. These materials are not intended to be an offer to sell, or solicitation to buy a unit in the condominium. Such an offering shall only be made pursuant to the prospectus (offering circular) for the condominium and no statements should be relied upon unless made in the prospectus or in the applicable purchase agreement. In no event shall any solicitation, offer or sale of a unit in the condominium be made in, or to residents of, any state or country in which such activity would be unlawful. This project is being developed by 5333 Collins Acquisitions, LP, a Delaware limited partnership, which was formed solely for such purpose. Stated square footages and dimensions are measured to the exterior boundaries of the exterior walls and the centerline of interior demising walls and in fact vary from the square footage and dimensions that would be determined by using the description and definition of the "Unit" set forth in the Declaration (which generally only includes the interior airspace between the perimeter walls and excludes all interior structural components and other common elements). This method is generally used in sales materials and is provided to allow a prospective buyer to compare the Units with units in other condominium projects that utilize the same method. For your reference, the area of the Unit, determined in accordance with these defined unit boundaries, is set forth on Exhibit "3" to the Declaration. Measurements of rooms set forth on this floor plan are generally taken at the farthest points of each given room (as if the room were a perfect rectangle), without regard for any cutouts or variations. Accordingly, the area of the actual room will typically be smaller than the product obtained by multiplying the stated length and width. All dimensions are estimates which will vary with actual construction, and all floor plans, specifications and other development plans are subject to change and will not necessarily accurately reflect the final plans and specifications for the development. 

Residence 04

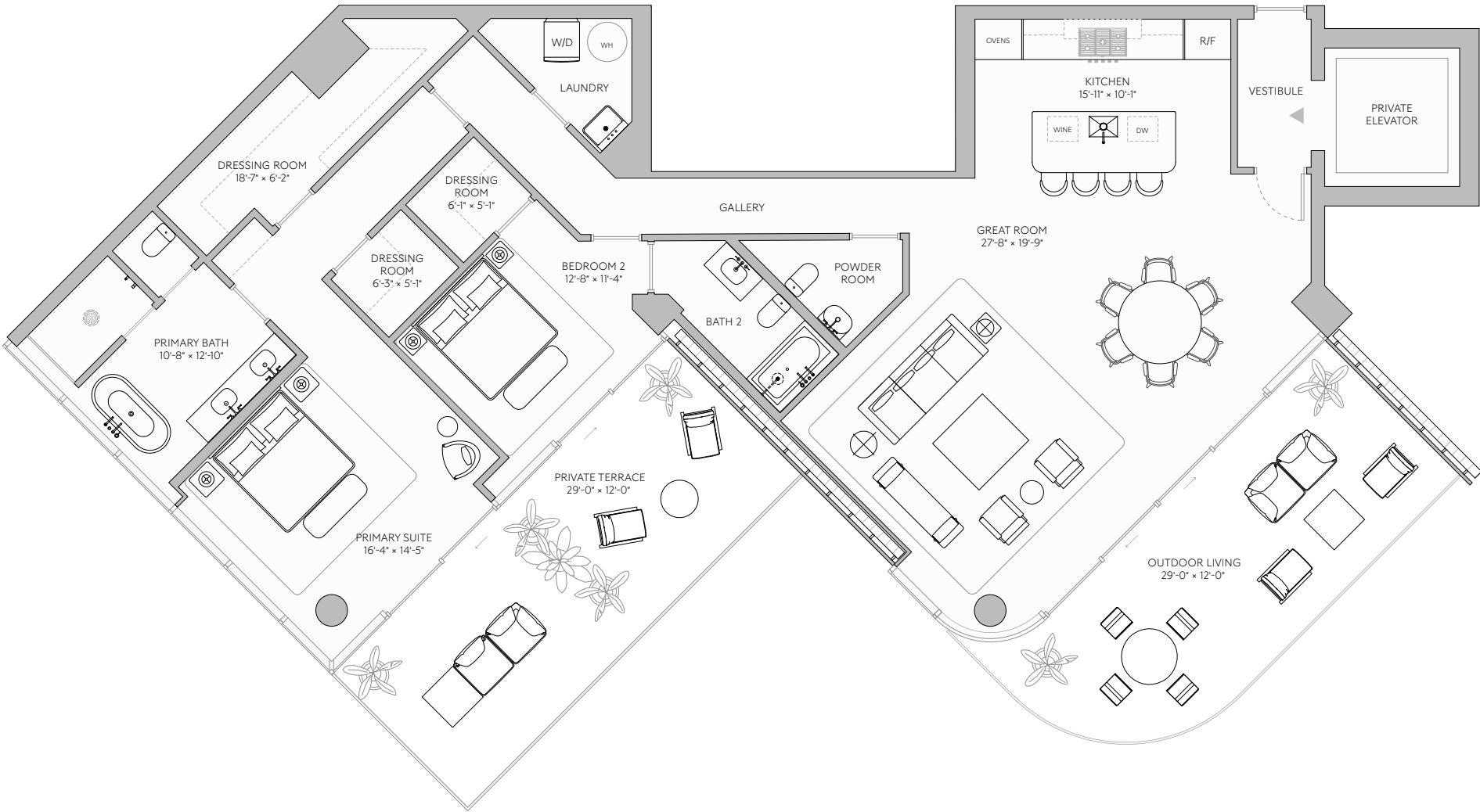
Floor 3

RESIDENCE FEATURES

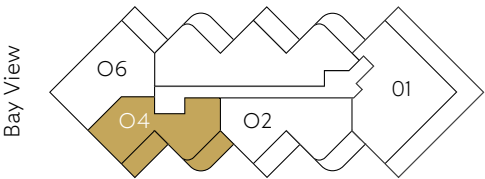
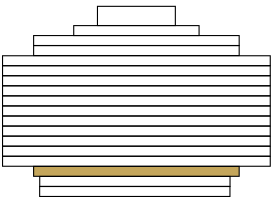
2 Bedrooms
2 Bathrooms
Powder Room

Interior	2,140 ft ²	199 m ²
Exterior	619 ft ²	57 m ²
Total	2,759 ft ²	256 m ²

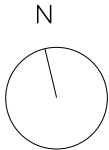
Views toward Biscayne Bay




Views toward Atlantic Ocean



Ocean View



ORAL REPRESENTATIONS CANNOT BE RELIED UPON AS CORRECTLY STATING THE REPRESENTATIONS OF THE DEVELOPER. FOR CORRECT REPRESENTATIONS, MAKE REFERENCE TO THIS BROCHURE AND TO THE DOCUMENTS REQUIRED BY SECTION 718.503, FLORIDA STATUTES, TO BE FURNISHED BY A DEVELOPER TO A BUYER OR LESSEE. These materials are not intended to be an offer to sell, or solicitation to buy a unit in the condominium. Such an offering shall only be made pursuant to the prospectus (offering circular) for the condominium and no statements should be relied upon unless made in the prospectus or in the applicable purchase agreement. In no event shall any solicitation, offer or sale of a unit in the condominium be made in, or to residents of, any state or country in which such activity would be unlawful. This project is being developed by 5333 Collins Acquisitions, LP, a Delaware limited partnership, which was formed solely for such purpose. Stated square footages and dimensions are measured to the exterior boundaries of the exterior walls and the centerline of interior demising walls and in fact vary from the square footage and dimensions that would be determined by using the description and definition of the "Unit" set forth in the Declaration (which generally only includes the interior airspace between the perimeter walls and excludes all interior structural components and other common elements). This method is generally used in sales materials and is provided to allow a prospective buyer to compare the Units with units in other condominium projects that utilize the same method. For your reference, the area of the Unit, determined in accordance with these defined unit boundaries, is set forth on Exhibit "3" to the Declaration. Measurements of rooms set forth on this floor plan are generally taken at the farthest points of each given room (as if the room were a perfect rectangle), without regard for any cutouts or variations. Accordingly, the area of the actual room will typically be smaller than the product obtained by multiplying the stated length and width. All dimensions are estimates which will vary with actual construction, and all floor plans, specifications and other development plans are subject to change and will not necessarily accurately reflect the final plans and specifications for the development. 

Residence 06

Floor 3

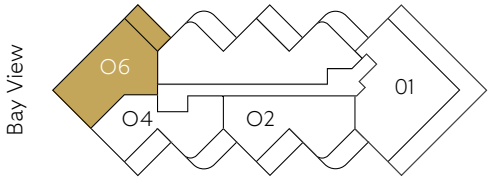
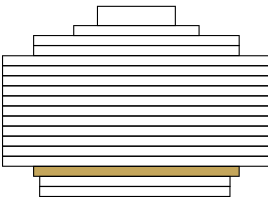
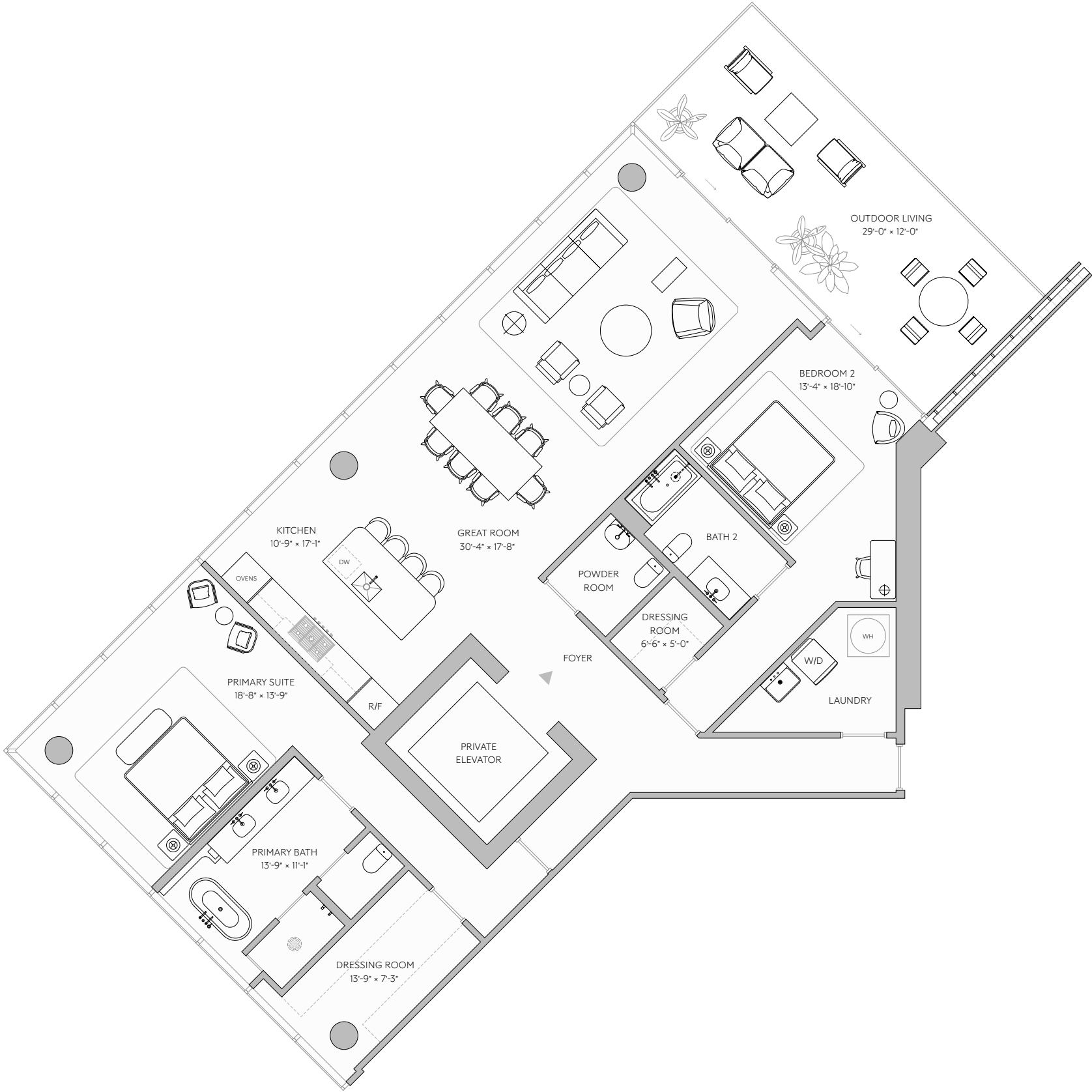
RESIDENCE FEATURES

- 2 Bedrooms
- 2 Bathrooms
- Powder Room

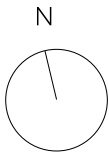
Interior	2,212 ft ²	205 m ²
Exterior	317 ft ²	29 m ²
Total	2,529 ft ²	234 m ²


Views toward Biscayne Bay

Views toward Atlantic Ocean



Ocean View



ORAL REPRESENTATIONS CANNOT BE RELIED UPON AS CORRECTLY STATING THE REPRESENTATIONS OF THE DEVELOPER. FOR CORRECT REPRESENTATIONS, MAKE REFERENCE TO THIS BROCHURE AND TO THE DOCUMENTS REQUIRED BY SECTION 718.503, FLORIDA STATUTES, TO BE FURNISHED BY A DEVELOPER TO A BUYER OR LESSEE. These materials are not intended to be an offer to sell, or solicitation to buy a unit in the condominium. Such an offering shall only be made pursuant to the prospectus (offering circular) for the condominium and no statements should be relied upon unless made in the prospectus or in the applicable purchase agreement. In no event shall any solicitation, offer or sale of a unit in the condominium be made in, or to residents of, any state or country in which such activity would be unlawful. This project is being developed by 5333 Collins Acquisitions, LP, a Delaware limited partnership, which was formed solely for such purpose. Stated square footages and dimensions are measured to the exterior boundaries of the exterior walls and the centerline of interior demising walls and in fact vary from the square footage and dimensions that would be determined by using the description and definition of the "Unit" set forth in the Declaration (which generally only includes the interior airspace between the perimeter walls and excludes all interior structural components and other common elements). This method is generally used in sales materials and is provided to allow a prospective buyer to compare the Units with units in other condominium projects that utilize the same method. For your reference, the area of the Unit, determined in accordance with these defined unit boundaries, is set forth on Exhibit "3" to the Declaration. Measurements of rooms set forth on this floor plan are generally taken at the farthest points of each given room (as if the room were a perfect rectangle), without regard for any cutouts or variations. Accordingly, the area of the actual room will typically be smaller than the product obtained by multiplying the stated length and width. All dimensions are estimates which will vary with actual construction, and all floor plans, specifications and other development plans are subject to change and will not necessarily accurately reflect the final plans and specifications for the development. 

Residence 02

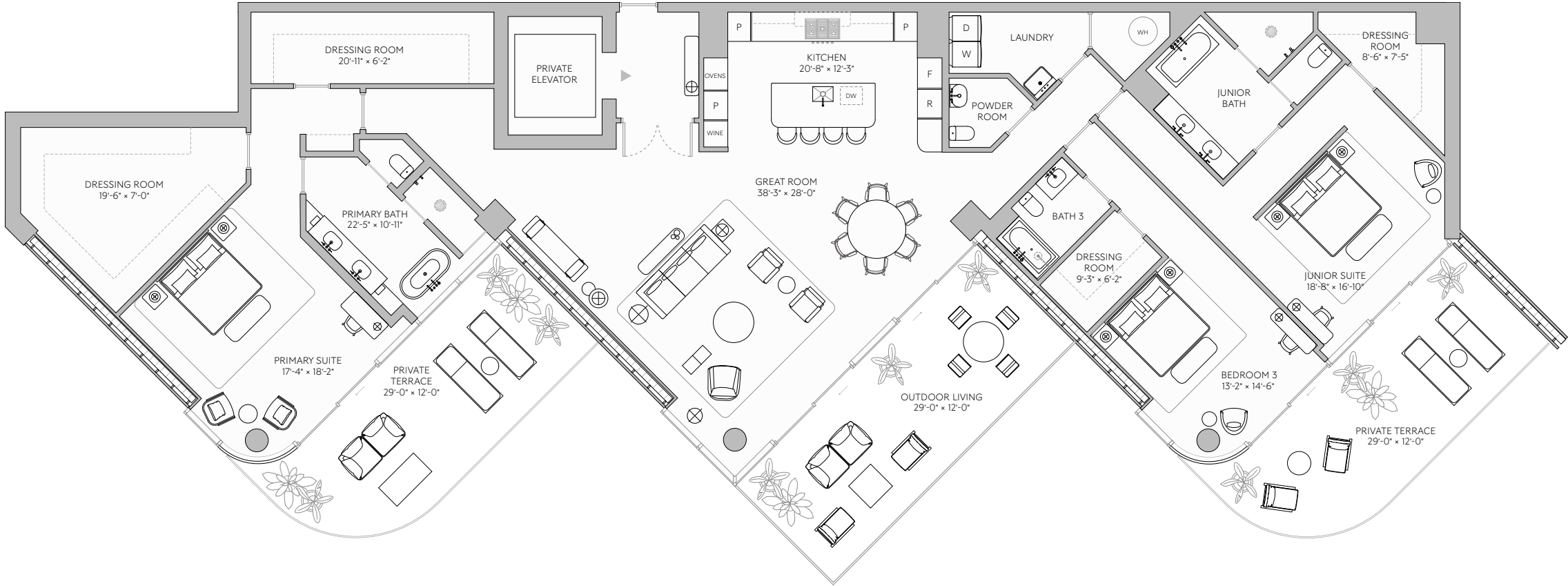
Floor 16

RESIDENCE FEATURES

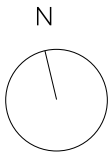
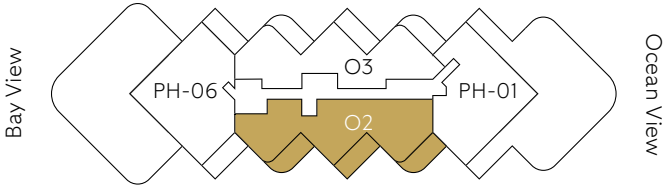
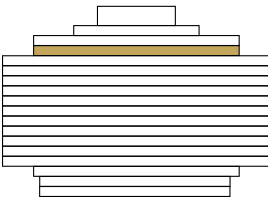
3 Bedrooms
3 Bathrooms
Powder Room


Interior	3,563 ft ²	331 m ²
Exterior	918 ft ²	85 m ²
Total	4,481 ft ²	416 m ²

Views toward Biscayne Bay



Views toward Atlantic Ocean



ORAL REPRESENTATIONS CANNOT BE RELIED UPON AS CORRECTLY STATING THE REPRESENTATIONS OF THE DEVELOPER. FOR CORRECT REPRESENTATIONS, MAKE REFERENCE TO THIS BROCHURE AND TO THE DOCUMENTS REQUIRED BY SECTION 718.503, FLORIDA STATUTES, TO BE FURNISHED BY A DEVELOPER TO A BUYER OR LESSEE. These materials are not intended to be an offer to sell, or solicitation to buy a unit in the condominium. Such an offering shall only be made pursuant to the prospectus (offering circular) for the condominium and no statements should be relied upon unless made in the prospectus or in the applicable purchase agreement. In no event shall any solicitation, offer or sale of a unit in the condominium be made in, or to residents of, any state or country in which such activity would be unlawful. This project is being developed by 5333 Collins Acquisitions, LP, a Delaware limited partnership, which was formed solely for such purpose. Stated square footages and dimensions are measured to the exterior boundaries of the exterior walls and the centerline of interior demising walls and in fact vary from the square footage and dimensions that would be determined by using the description and definition of the "Unit" set forth in the Declaration (which generally only includes the interior airspace between the perimeter walls and excludes all interior structural components and other common elements). This method is generally used in sales materials and is provided to allow a prospective buyer to compare the Units with units in other condominium projects that utilize the same method. For your reference, the area of the Unit, determined in accordance with these defined unit boundaries, is set forth on Exhibit "3" to the Declaration. Measurements of rooms set forth on this floor plan are generally taken at the farthest points of each given room (as if the room were a perfect rectangle), without regard for any cutouts or variations. Accordingly, the area of the actual room will typically be smaller than the product obtained by multiplying the stated length and width. All dimensions are estimates which will vary with actual construction, and all floor plans, specifications and other development plans are subject to change and will not necessarily accurately reflect the final plans and specifications for the development. 

Residence 02

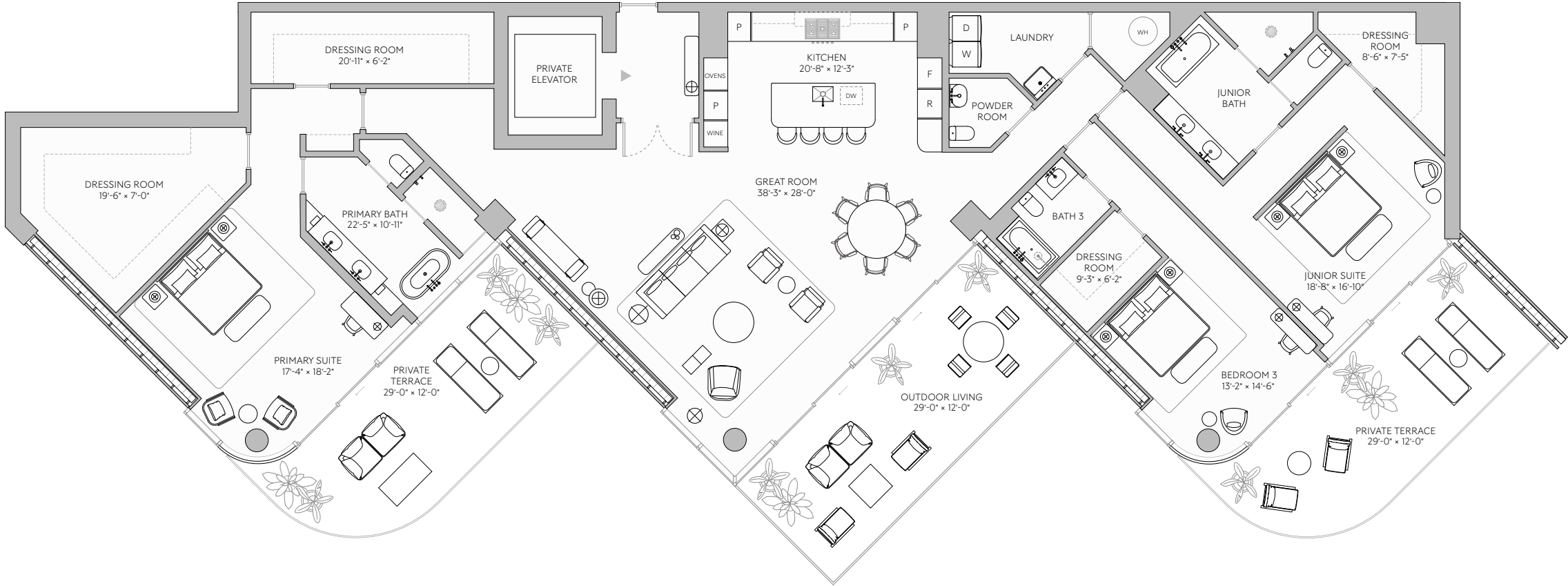
Floor 17

RESIDENCE FEATURES

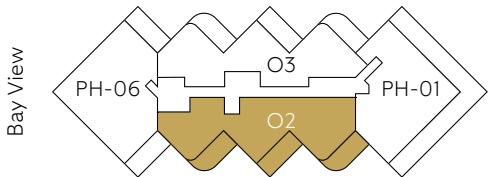
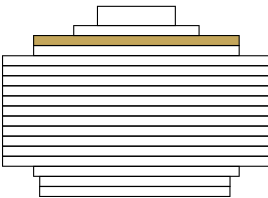
3 Bedrooms
3 Bathrooms
Powder Room

Interior	3,528 ft ²	328 m ²
Exterior	918 ft ²	85 m ²
Total	4,446 ft ²	413 m ²

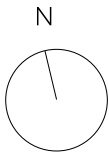
Views toward Biscayne Bay




Views toward Atlantic Ocean



Ocean View



ORAL REPRESENTATIONS CANNOT BE RELIED UPON AS CORRECTLY STATING THE REPRESENTATIONS OF THE DEVELOPER. FOR CORRECT REPRESENTATIONS, MAKE REFERENCE TO THIS BROCHURE AND TO THE DOCUMENTS REQUIRED BY SECTION 718.503, FLORIDA STATUTES, TO BE FURNISHED BY A DEVELOPER TO A BUYER OR LESSEE. These materials are not intended to be an offer to sell, or solicitation to buy a unit in the condominium. Such an offering shall only be made pursuant to the prospectus (offering circular) for the condominium and no statements should be relied upon unless made in the prospectus or in the applicable purchase agreement. In no event shall any solicitation, offer or sale of a unit in the condominium be made in, or to residents of, any state or country in which such activity would be unlawful. This project is being developed by 5333 Collins Acquisitions, LP, a Delaware limited partnership, which was formed solely for such purpose. Stated square footages and dimensions are measured to the exterior boundaries of the exterior walls and the centerline of interior demising walls and in fact vary from the square footage and dimensions that would be determined by using the description and definition of the "Unit" set forth in the Declaration (which generally only includes the interior airspace between the perimeter walls and excludes all interior structural components and other common elements). This method is generally used in sales materials and is provided to allow a prospective buyer to compare the Units with units in other condominium projects that utilize the same method. For your reference, the area of the Unit, determined in accordance with these defined unit boundaries, is set forth on Exhibit "3" to the Declaration. Measurements of rooms set forth on this floor plan are generally taken at the farthest points of each given room (as if the room were a perfect rectangle), without regard for any cutouts or variations. Accordingly, the area of the actual room will typically be smaller than the product obtained by multiplying the stated length and width. All dimensions are estimates which will vary with actual construction, and all floor plans, specifications and other development plans are subject to change and will not necessarily accurately reflect the final plans and specifications for the development. 



Views



Southeast View



East View



Northeast View



Northwest View

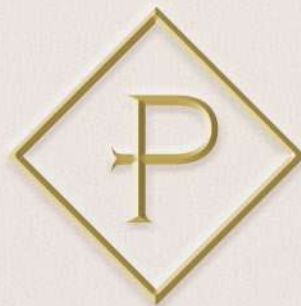


West View



Southwest View





5333 Collins Avenue
Miami Beach, Florida



ORAL REPRESENTATIONS CANNOT BE RELIED UPON AS CORRECTLY STATING THE REPRESENTATIONS OF THE DEVELOPER. FOR CORRECT REPRESENTATIONS, MAKE REFERENCE TO THIS BROCHURE AND TO THE DOCUMENTS REQUIRED BY SECTION 718.503, FLORIDA STATUTES, TO BE FURNISHED BY A DEVELOPER TO A BUYER OR LESSEE. These materials are not intended to be an offer to sell, or solicitation to buy a unit in the condominium. Such an offering shall only be made pursuant to the prospectus (offering circular) for the condominium and no statements should be relied upon unless made in the prospectus or in the applicable purchase agreement. In no event shall any solicitation, offer or sale of a unit in the condominium be made in, or to residents of, any state or country in which such activity would be unlawful. This offering is made only by the prospectus for the condominium and no statement should be relied upon if not made in the prospectus. No real estate broker or salesperson is authorized to make any representations or other statements regarding this project, and no agreements with, deposits paid to or other arrangements made with any real estate broker are or shall be binding on the Developer. All prices, plans, specifications, features, amenities and other descriptions are preliminary and are subject to change without notice, as provided in your purchase agreement. All images and designs depicted herein are artist's conceptual renderings, which are based upon preliminary development plans, and are subject to change without notice in the manner provided in the offering documents. All such materials are not to scale and are shown solely for illustrative purposes. Renderings depict proposed views, which are not identical from each unit. No guarantees or representations whatsoever are made that existing or future views of the project and surrounding areas depicted by artist's conceptual renderings or otherwise described herein, will be provided or, if provided, will be as depicted or described herein. Any view from a unit of from other portions of the property may in the future be limited or eliminated by future development or forces of nature and the developer in no manner guarantees the continuing existence of any view. The photographs contained in this brochure may be stock photography or have been taken off-site and are used to depict the spirit of the lifestyle to be achieved rather than any that may exist or that may be proposed, and are merely intended as illustration of the activities and concepts depicted therein. Interior photos shown may depict options and upgrades and are not representative of standard features and may not be available for all model types. All fixtures, furniture and items of finish and decoration of units described herein are for display only and may not to be included with the unit, unless expressly provided in the purchase agreement. All plans, features and amenities depicted herein are based upon preliminary development plans, and are subject to change without notice in the manner provided in the offering documents. No guarantees or representations whatsoever are made that any plans, features, amenities or facilities will be provided or, if provided, will be of the same type, size, location or nature as depicted or described herein. This project is being developed by 5333 Collins Acquisitions LP, a Delaware limited liability company, which was formed solely for such purpose. The sketches, renderings, graphics materials, plans, specifications, terms, conditions and statements contained in this brochure are proposed only, and the Developer reserves the right to modify, revise or withdraw any or all of the same in its sole discretion and without prior notice. All improvements, designs and construction are subject to first obtaining the appropriate federal, state and local permits and approvals for same. These drawings and depictions are conceptual only and re for the convenience of reference. They should not be relied upon as representations, express or implied, of the final detail of the residences. The developer expressly reserved the right to make modifications, revisions and changes it deemed desirable in its sole and absolute discretion. Restaurants and other business establishments and/or any operators of same referenced herein are subject to change at any time, and no representations regarding restaurants, businesses and/or operators within the project may be relied upon. Restaurants, and/or other business establishments, are anticipated to be operated from the commercial components of the project which will be offered for sale to third parties. Except as may be otherwise provided in the offering materials, the use of the commercial spaces will be in discretion of the purchasers of those spaces and there is no assurance that they will be used for the purposes, and/or with the operators, named herein. 