

RESIDENCE

FLOORS

A 3-21

# RIVAGE

BAL HARBOUR



RivageBalHarbour.com  
305.423.7548

Future residences located at:  
10245 Collins Avenue  
Bal Harbour, FL 33154



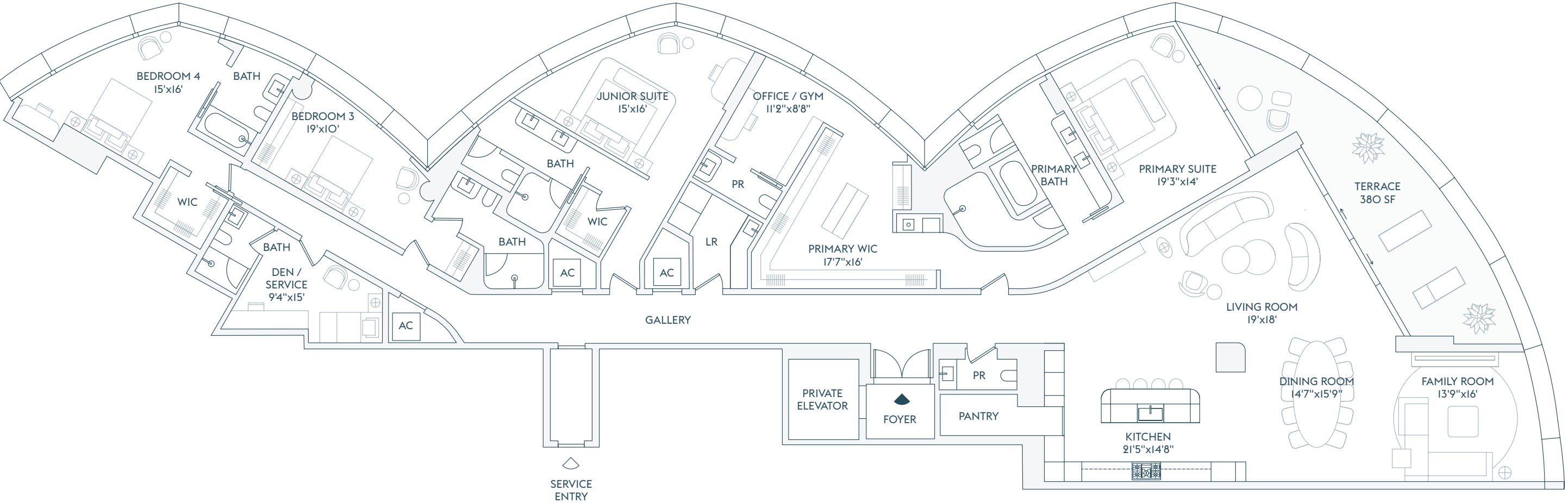
# RIVAGE

BAL HARBOUR

RESIDENCE  
**A**

FLOORS  
**3-21**

4 BEDROOMS	INTERIOR	TOTAL
5 BATHROOMS	4,810 SF   446.5 SQM	5,190 SF   481.5 SQM
2 POWDER ROOMS		
DEN / SERVICE	EXTERIOR	
OFFICE / GYM	380 SF   35 SQM	



The dimensions stated for this Unit floor plan are approximate because there are various recognized methods for calculating the square footage of a Unit. The square footage stated herein is calculated from the exterior boundaries of the exterior walls to the centerline of interior demising walls without deductions for cutouts, curves, or architectural features. This method typically results in quoted dimensions greater than the dimensions that would be determined by using other accepted methods. The definition of "Unit" and the calculation method to be relied upon is the method of calculation set forth by the Developer in the Developer's prospectus, which method may result in a square footage calculation that is less than the method used herein. Dimensions and Unit configurations are not guaranteed and may change during construction. Depictions of furnishings, fixtures, and other items of personal property are not included with purchase. Uses of space depicted are not guaranteed. Consult the Developer's prospectus to learn Unit dimensions, what is offered with the Unit, and all terms and conditions. 2022 © Carlton Terrace Owner LLC, with all rights reserved.





RESIDENCE

B

FLOORS

3-21

# RIVAGE

BAL HARBOUR

RivageBalHarbour.com  
305.423.7548

Future residences located at:  
10245 Collins Avenue  
Bal Harbour, FL 33154



# RIVAGE

BAL HARBOUR

RESIDENCE

B

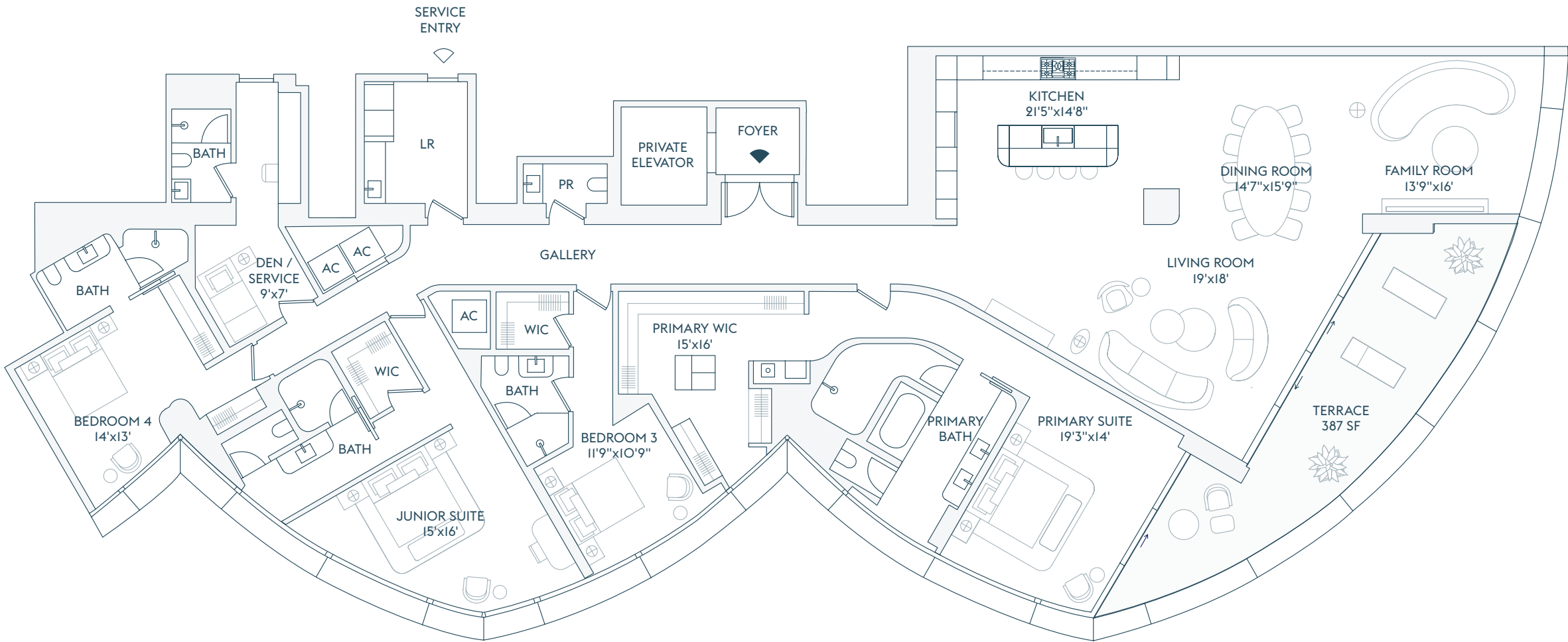
FLOORS

3-21

4 BEDROOMS  
5 BATHROOMS  
1 POWDER ROOM  
DEN / SERVICE

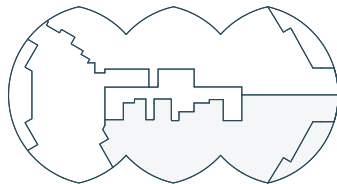
INTERIOR  
4,358 SF | 404.5 SQM  
  
EXTERIOR  
387 SF | 36 SQM

TOTAL  
4,745 SF | 440.5 SQM



INTRACOASTAL  
WATERS

N



ATLANTIC OCEAN

The dimensions stated for this Unit floor plan are approximate because there are various recognized methods for calculating the square footage of a Unit. The square footage stated herein is calculated from the exterior boundaries of the exterior walls to the centerline of interior demising walls without deductions for cutouts, curves, or architectural features. This method typically results in quoted dimensions greater than the dimensions that would be determined by using other accepted methods. The definition of "Unit" and the calculation method to be relied upon is the method of calculation set forth by the Developer in the Developer's prospectus, which method may result in a square footage calculation that is less than the method used herein. Dimensions and Unit configurations are not guaranteed and may change during construction. Depictions of furnishings, fixtures, and other items of personal property are not included with purchase. Uses of space depicted are not guaranteed. Consult the Developer's prospectus to learn Unit dimensions, what is offered with the Unit, and all terms and conditions. 2022 © Carlton Terrace Owner LLC, with all rights reserved.



RESIDENCE

FLOORS

C 3-21

# RIVAGE

BAL HARBOUR

RivageBalHarbour.com  
305.423.7548

Future residences located at:  
10245 Collins Avenue  
Bal Harbour, FL 33154



# RIVAGE

BAL HARBOUR

RESIDENCE

FLOORS

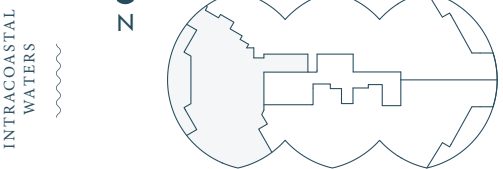
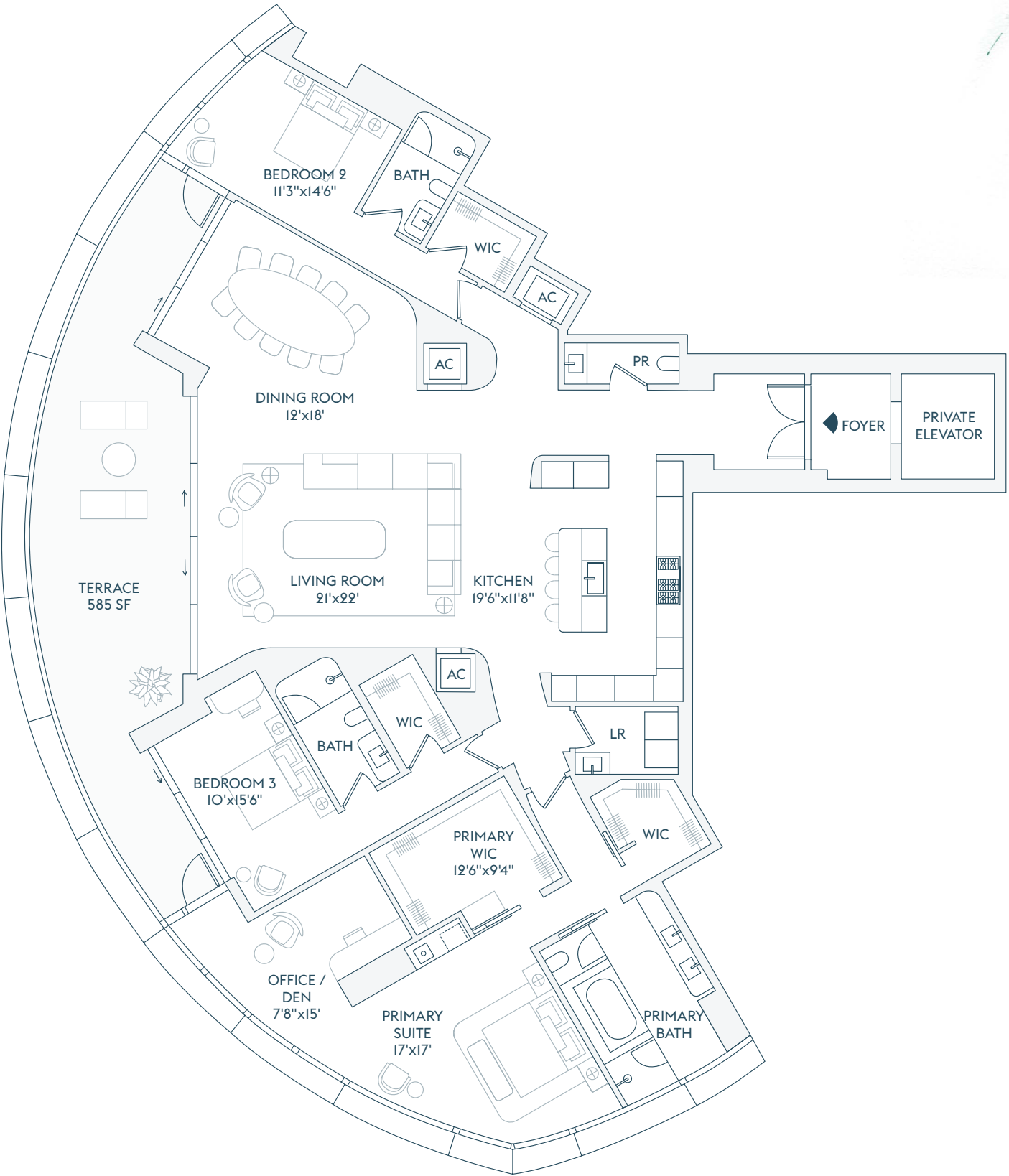
C 3-21

3 BEDROOMS  
3 BATHROOMS  
1 POWDER ROOM  
OFFICE / DEN

INTERIOR  
3,297 SF | 306.5 SQM

EXTERIOR  
585 SF | 54 SQM

TOTAL  
3,882 SF | 360.5 SQM



The dimensions stated for this Unit floor plan are approximate because there are various recognized methods for calculating the square footage of a Unit. The square footage stated herein is calculated from the exterior boundaries of the exterior walls to the centerline of interior demising walls without deductions for cutouts, curves, or architectural features. This method typically results in quoted dimensions greater than the dimensions that would be determined by using other accepted methods. The definition of "Unit" and the calculation method to be relied upon is the method of calculation set forth by the Developer in the Developer's prospectus, which method may result in a square footage calculation that is less than the method used herein. Dimensions and Unit configurations are not guaranteed and may change during construction. Depictions of furnishings, fixtures, and other items of personal property are not included with purchase. Uses of space depicted are not guaranteed. Consult the Developer's prospectus to learn Unit dimensions, what is offered with the Unit, and all terms and conditions. 2022 © Carlton Terrace Owner LLC, with all rights reserved.