

OCEANFRONT

Residence 101

3 Bedroom | 3.5 Bathroom
with Family Room

UNIT	4,325 SF
TERRACE + POOL	3,053 SF
TOTAL	7,378 SF

Intimate Oceanfront Living

A Rosewood Residence

DEVELOPERS
The Related Group & Dezer Development

ARCHITECT
Arquitectonica

INTERIOR DESIGNER
Studio Piet Boon

1180 Hillsboro Mile
Hillsboro Beach, Florida 33062

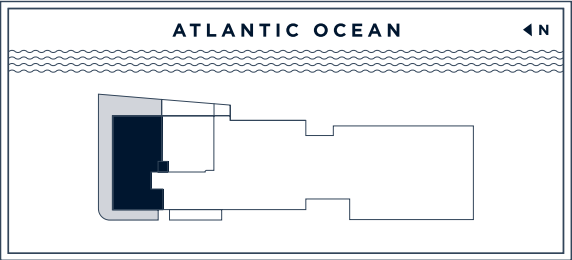
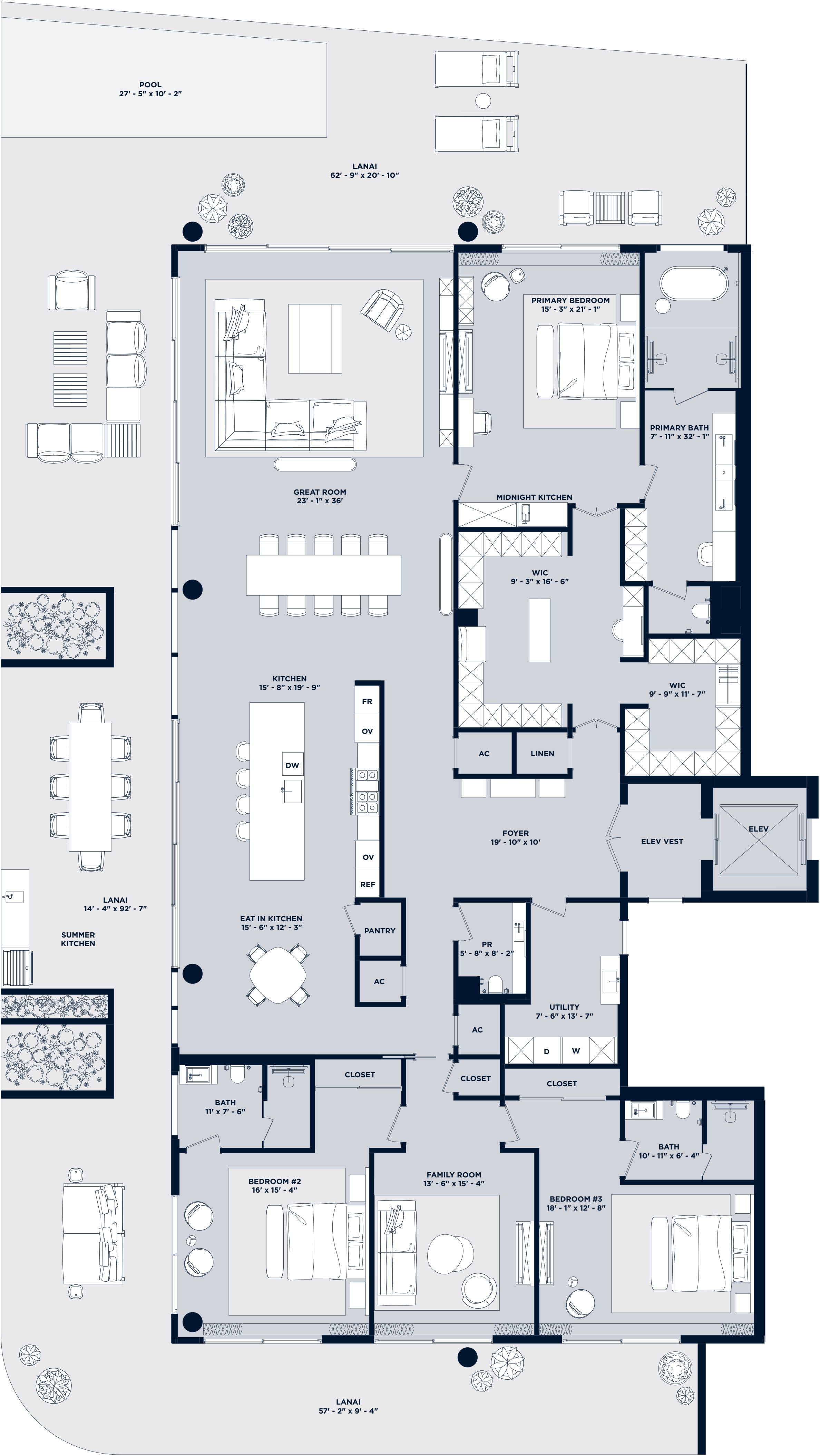
Inquiries 754 202 1225

Info@ResidencesHillsboroBeach.com
RESIDENCESHILLSBOROBEACH.COM



RELATED **DEZER** **ARQUITECTONICA**

The dimensions stated for this floor plan are approximate because there are various recognized methods for calculating the square footage of a unit. The square footage stated here is calculated from the exterior boundaries of the exterior walls to the centerline of interior demising walls without deductions for cutouts, curves, or architectural features. This method typically results in quoted dimensions greater than the dimensions that would be determined by using other accepted methods. The definition of "linen" and the calculation method to be relied upon is set forth by the Developer in Developer's prospectus which method may result in a square footage calculation less than the result of the calculation method used here. Readings depict features not included with purchase, but which are available at an additional cost such as wine bar and closet millwork among others. Consult the Developer's prospectus to learn what is included with Unit purchase and to understand Unit dimensions. 2023 © HILLSBORO MILE PROPERTY OWNER, LLC with all rights reserved.



OCEANFRONT

Residence 102

2 Bedroom | 2.5 Bathroom & Den

UNIT	2,807 SF
TERRACE + POOL	728 SF
TOTAL	3,535 SF

Intimate Oceanfront Living

A Rosewood Residence

DEVELOPERS
The Related Group & Dezer Development

ARCHITECT
Arquitectonica

INTERIOR DESIGNER
Studio Piet Boon

1180 Hillsboro Mile
Hillsboro Beach, Florida 33062

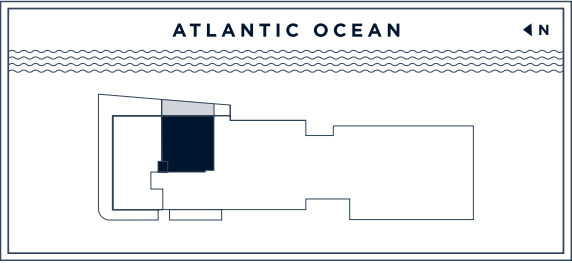
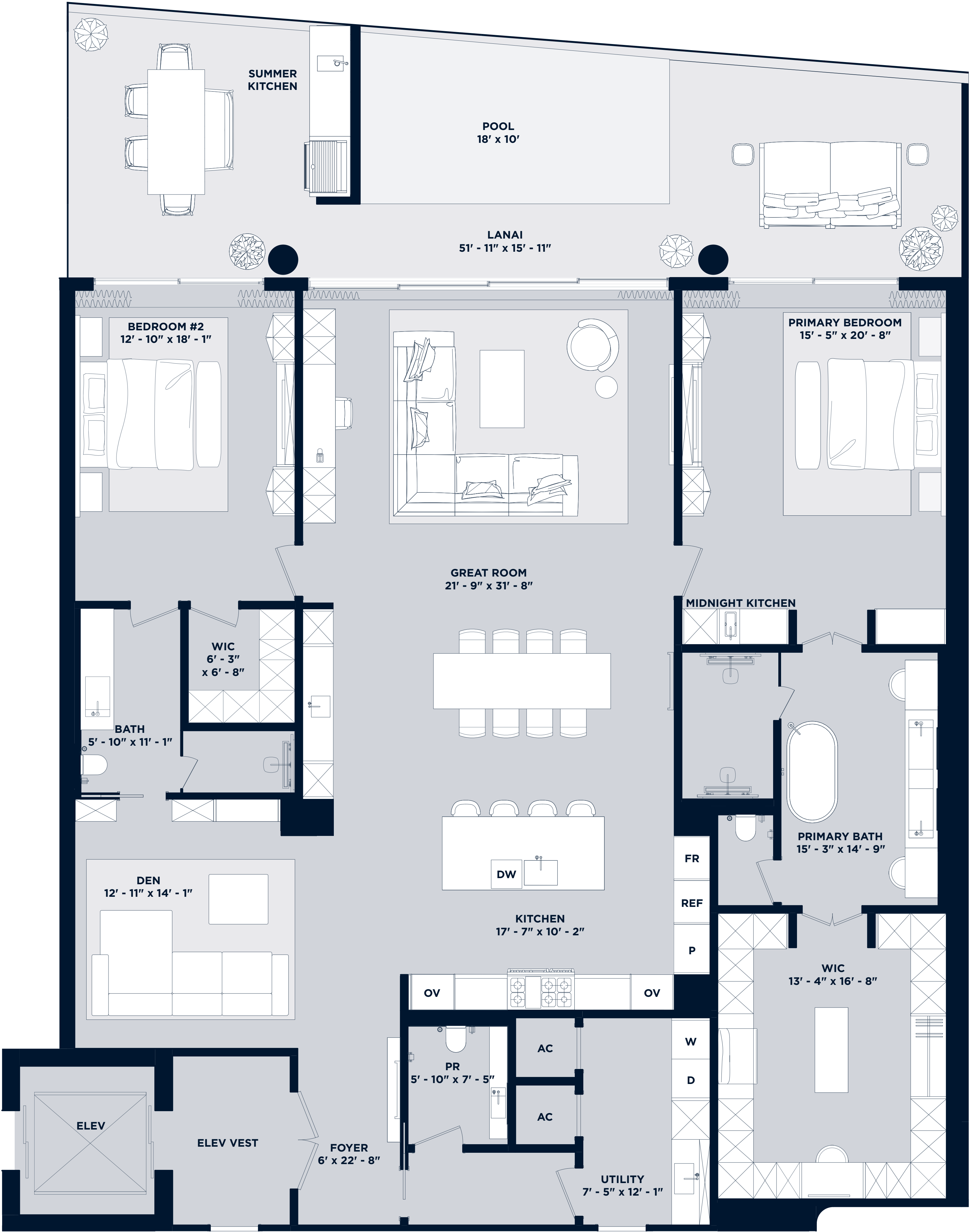
Inquiries 754 202 1225

Info@ResidencesHillsboroBeach.com
RESIDENCESHILLSBOROBEACH.COM



RELATED **DEZER** **ARQUITECTONICA**

The dimensions stated for this floor plan are approximate because there are various recognized methods for calculating the square footage of a unit. The square footage stated here is calculated from the exterior boundaries of the exterior walls to the exterior of interior demising walls without deductions for cutouts, curves, or architectural features. This method typically results in quoted dimensions greater than the dimensions that would be determined by using other accepted methods. The definition of "unit" and the calculation method to be relied upon is set forth by the Developer in Developer's prospectus which method may result in a square footage calculation less than the result of the calculation method used here. Readings depict features not included with purchase, but which are available at an additional cost such as wine bar and closet millwork among others. Consult the Developer's prospectus to learn what is included with Unit purchase and to understand Unit dimensions. 2023 © HILLSBORO MILE PROPERTY OWNERS, LLC with all rights reserved.



OCEANFRONT

Residences 201-801

5 Bedroom | 6.5 Bathroom
with Family Room & Service Quarters

Residences 201-501

UNIT	5,625 SF
BALCONY	2,338 SF
TOTAL	7,963 SF

Residences 601-701

UNIT	5,625 SF
BALCONY	2,165 SF
TOTAL	7,790 SF

Residence 801

UNIT	5,625 SF
BALCONY	2,165 SF
ROOFTOP	2,405 SF
TOTAL	10,195 SF

Intimate Oceanfront Living

A Rosewood Residence

DEVELOPERS
The Related Group & Dezer Development

ARCHITECT
Arquitectonica

INTERIOR DESIGNER
Studio Piet Boon

1180 Hillsboro Mile
Hillsboro Beach, Florida 33062

Inquiries 754 202 1225

Info@ResidencesHillsboroBeach.com
RESIDENCESHILLSBOROBEACH.COM

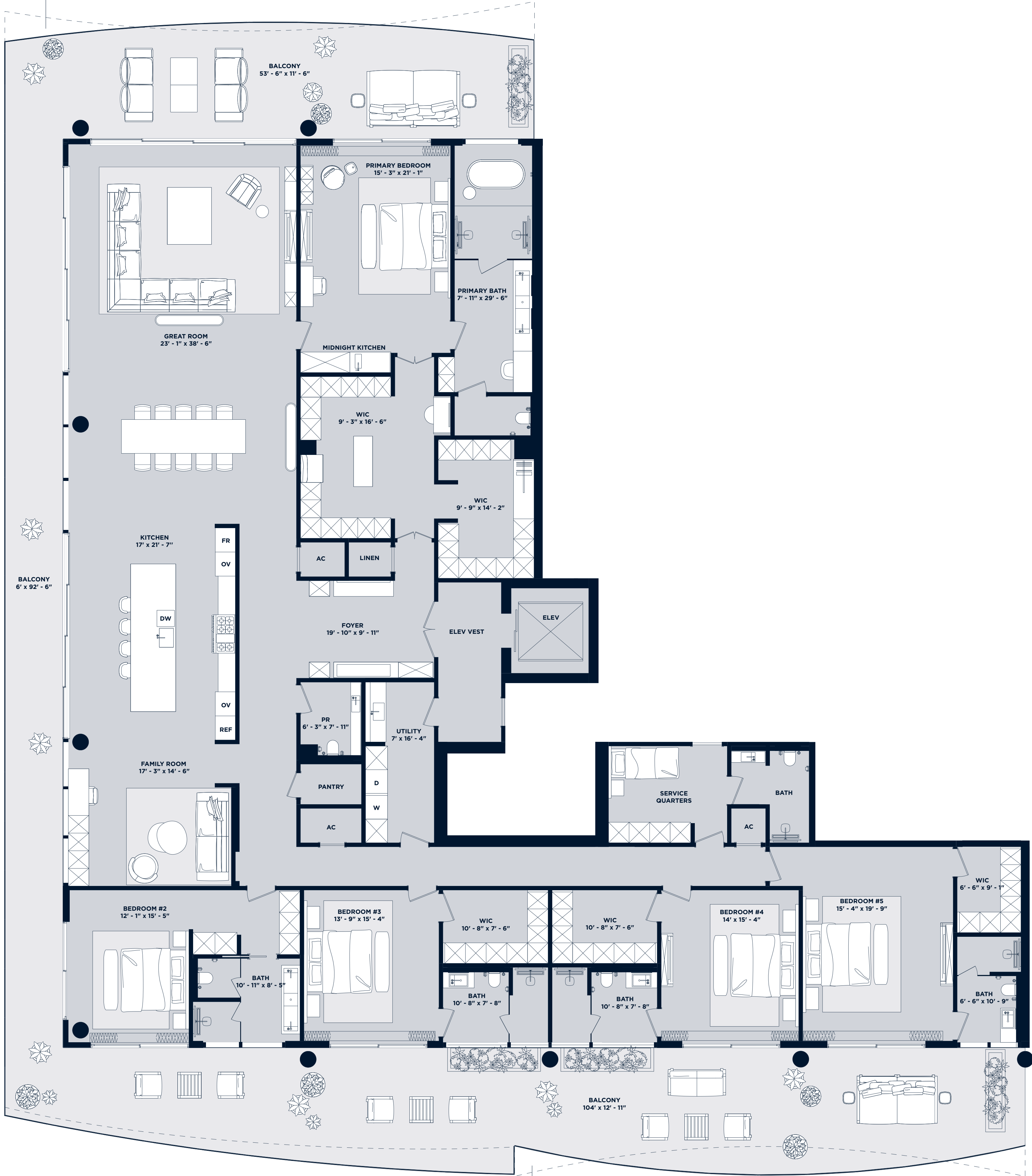


RELATED

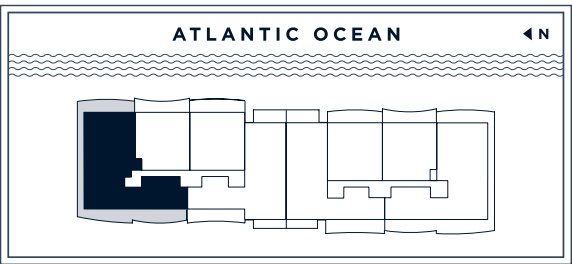
DEZER
DEVELOPMENT

ARQUITECTONICA

TERRACE VARIATION:
RESIDENCES 601, 701, 801



BALCONY VARIATION:
RESIDENCES 601, 701, 801



The dimensions stated for this floor plan are approximate because there are various recognized methods for calculating the square footage of a unit. The square footage stated here is calculated from the exterior boundaries of the exterior walls to the centerline of interior demising walls without deductions for cutouts, curves, or architectural features. This method typically results in quoted dimensions greater than the dimensions that would be determined by using other accepted methods. The definition of "lineal" and the calculation method to be relied upon is set forth by the Developer in Developer's prospectus which method may result in a square footage calculation less than the result of the calculation method used here. Readings depict features not included with purchase, but which are available at an additional cost such as wine bar and closet millwork among others. Consult the Developer's prospectus to learn what is included with unit purchase and to understand Unit dimensions. 2023 © HILLSBORO MILE PROPERTY OWNER, LLC with all rights reserved.

OCEANFRONT

Residences 202-802

2 Bedroom | 2.5 Bathroom & Den

Residences 202-502

UNIT	2,813 SF
BALCONY	571 SF
TOTAL	3,384 SF

Residences 602-802

UNIT	2,813 SF
BALCONY	579 SF
TOTAL	3,392 SF

Intimate Oceanfront Living

A Rosewood Residence

DEVELOPERS
The Related Group & Dezer Development

ARCHITECT
Arquitectonica

INTERIOR DESIGNER
Studio Piet Boon

1180 Hillsboro Mile
Hillsboro Beach, Florida 33062

Inquiries 754 202 1225

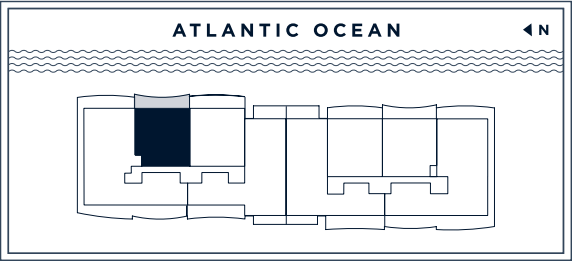
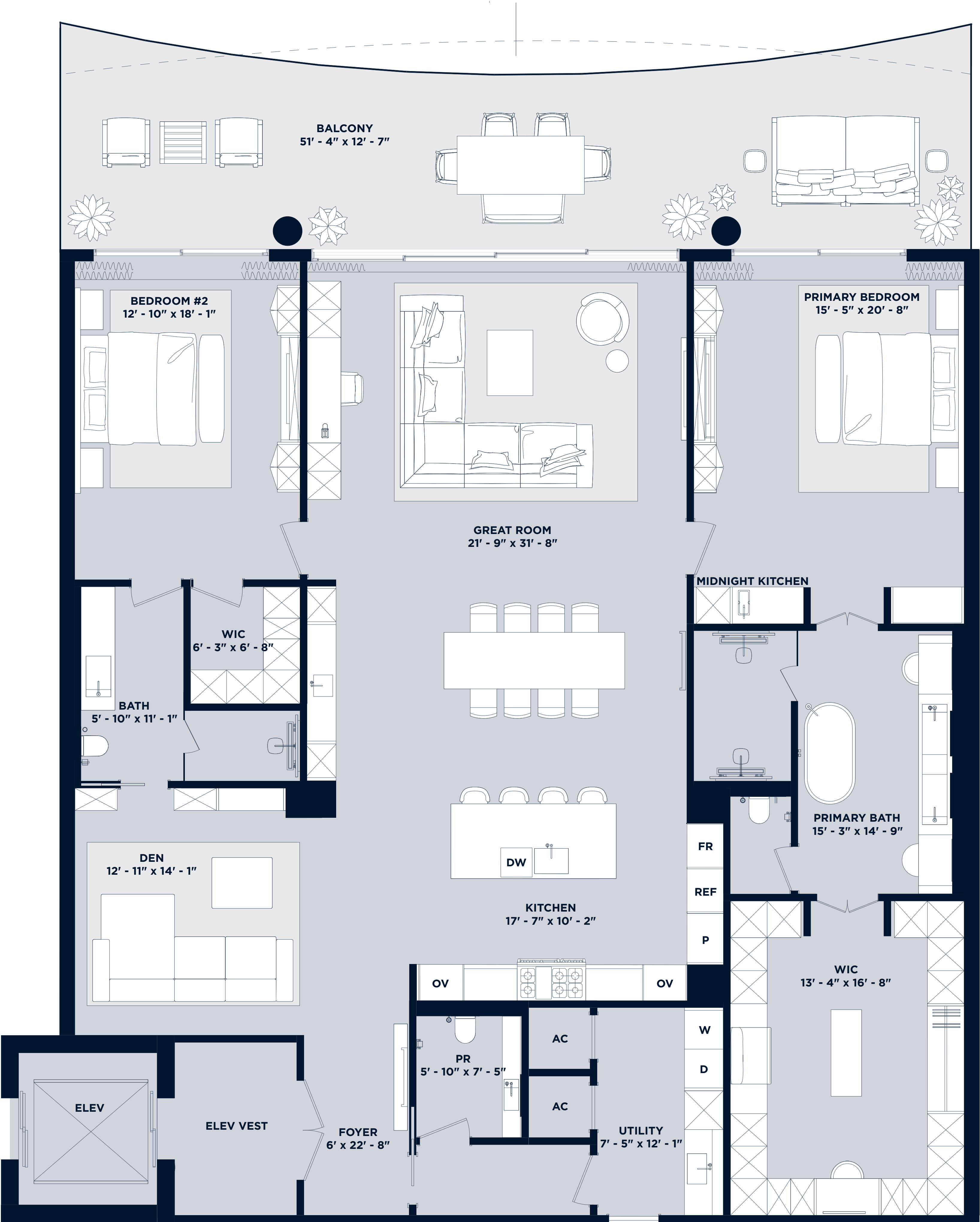
Info@ResidencesHillsboroBeach.com
RESIDENCESHILLSBOROBEACH.COM



RELATED DEZER ESTABLISHMENT ARQUITECTONICA

The dimensions stated for this floor plan are approximate because there are various recognized methods for calculating the square footage of a unit. The square footage stated here is calculated from the exterior boundaries of the exterior walls to the centerline of interior demising walls without deductions for cutouts, curves, or architectural features. This method typically results in quoted dimensions greater than the dimensions that would be determined by using other accepted methods. The definition of "unit" and the calculation method to be relied upon is set forth by the Developer in Developer's prospectus which method may result in a square footage calculation less than the result of the calculation method used here. Renderings depict features not included with purchase, but which are available at an additional cost such as wine bar and closet millwork among others. Consult the Developer's prospectus to learn what is included with unit purchase and to understand unit dimensions. 2023 © HILLSBORO HILLS PROPERTY OWNER, LLC with all rights reserved.

BALCONY VARIATION:
RESIDENCES 602-802



OCEANFRONT

Residences 203-803

2 Bedroom | 2.5 Bathroom & Den

Residences 203-503

UNIT	2,804 SF
BALCONY	595 SF
TOTAL	3,399 SF

Residences 603-803

UNIT	2,804 SF
BALCONY	562 SF
TOTAL	3,366 SF

Intimate Oceanfront Living

A Rosewood Residence

DEVELOPERS
The Related Group & Dezer Development

ARCHITECT
Arquitectonica

INTERIOR DESIGNER
Studio Piet Boon

1180 Hillsboro Mile
Hillsboro Beach, Florida 33062

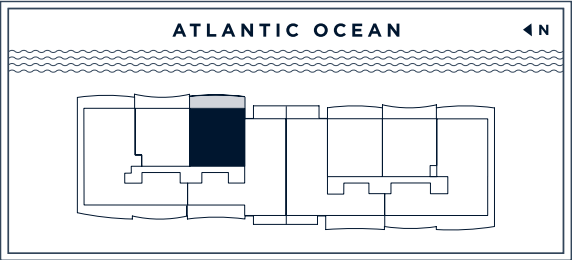
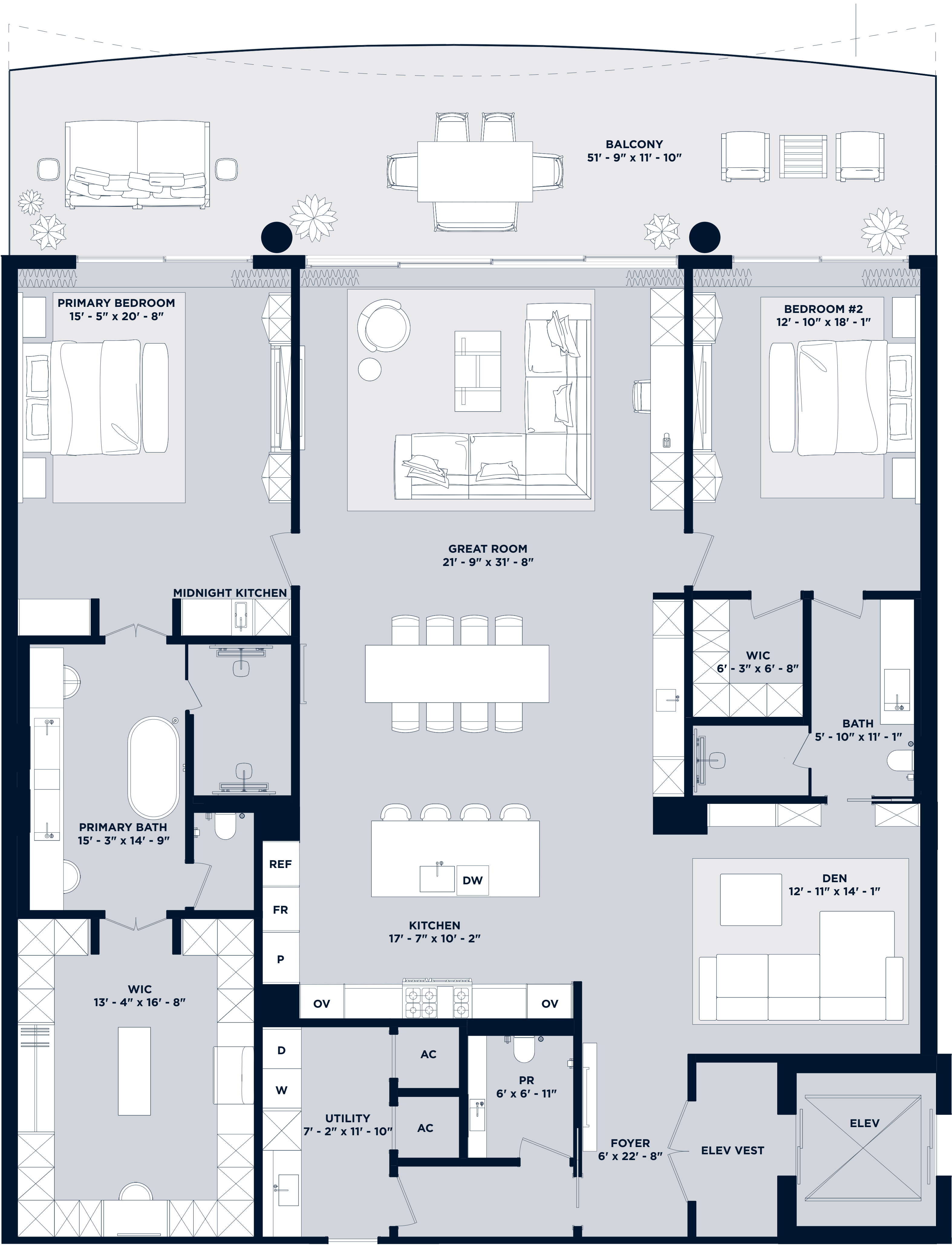
Inquiries 754 202 1225

Info@ResidencesHillsboroBeach.com
RESIDENCESHILLSBOROBEACH.COM

RELATED **DEZER** **ARQUITECTONICA**

The dimensions stated for this floor plan are approximate because there are various recognized methods for calculating the square footage of a unit. The square footage stated here is calculated from the exterior boundaries of the exterior walls to the centerline of interior demising walls without deductions for cutouts, curves, or architectural features. This method typically results in quoted dimensions greater than the dimensions that would be determined by using other accepted methods. The definition of "unit" and the calculation method to be relied upon is set forth by the Developer in Developer's prospectus which method may result in a square footage calculation less than the result of the calculation method used here. Readings depict features not included with purchase, but which are available at an additional cost such as wine bar and closet millwork among others. Consult the Developer's prospectus to learn what is included with Unit purchase and to understand Unit dimensions. 2023 © HILLSBORO MILE PROPERTY OWNER, LLC with all rights reserved.

BALCONY VARIATION:
RESIDENCES 603-803



OCEANFRONT

Residences 204 - 904

4 Bedroom | 6.5 Bathroom
with Family Room & Service Quarters

or 5 Bedroom | 6.5 Bathroom
with Service Quarters

Residences 204-504

UNIT	5,018 SF
BALCONY	1,251 SF
TOTAL	6,269 SF

Residences 604-804

UNIT	5,018 SF
BALCONY	1,224 SF
TOTAL	6,242 SF

Residences 904

UNIT	5,018 SF
BALCONY	1,251 SF
TOTAL	6,269 SF

Intimate Oceanfront Living

A Rosewood Residence

DEVELOPERS
The Related Group & Dezer Development

ARCHITECT
Arquitectonica

INTERIOR DESIGNER
Studio Piet Boon

1180 Hillsboro Mile
Hillsboro Beach, Florida 33062

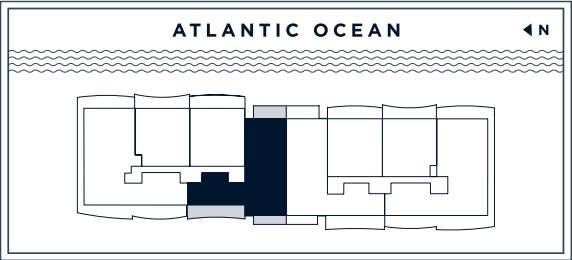
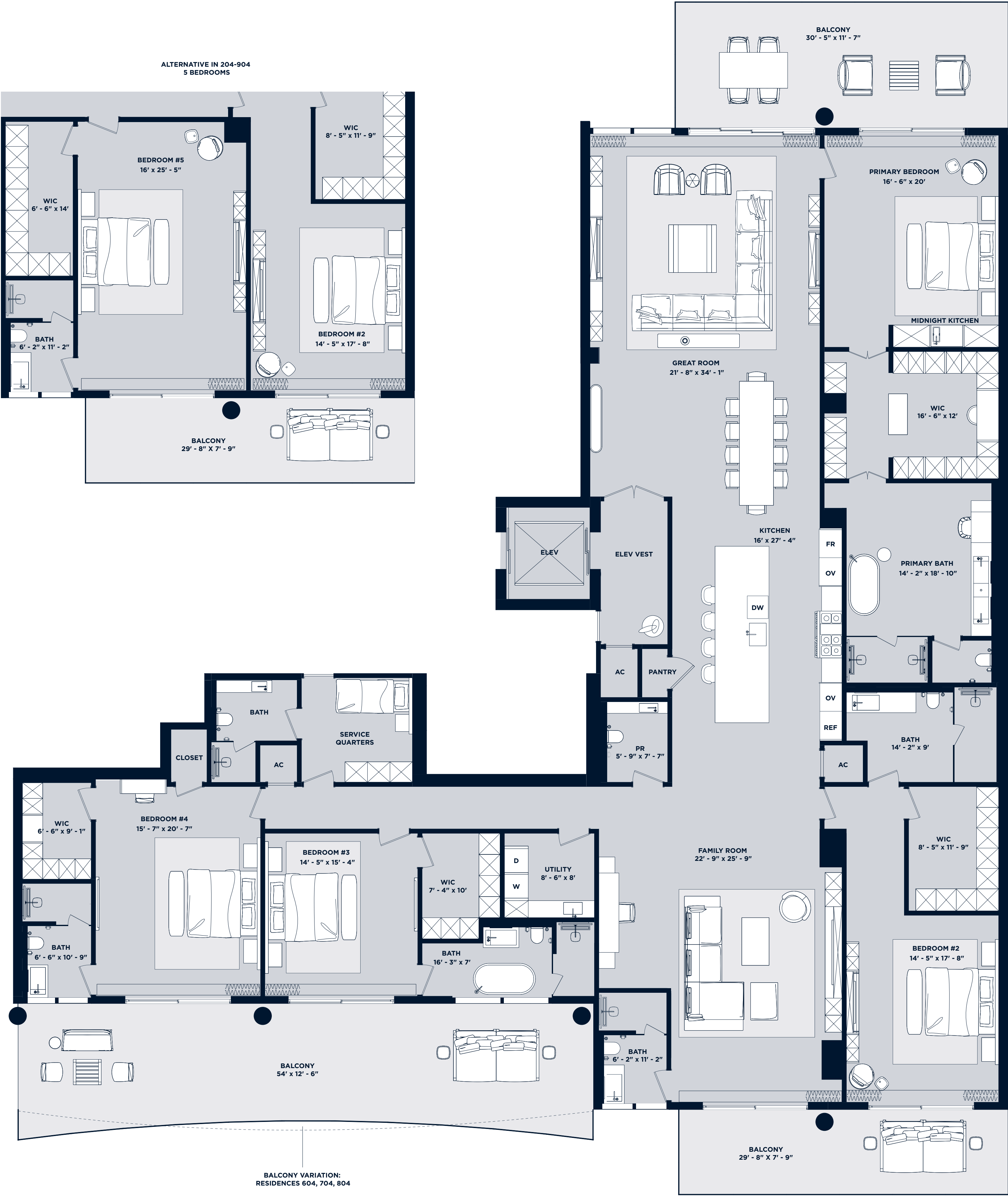
Inquiries 754 202 1225

Info@ResidencesHillsboroBeach.com
RESIDENCESHILLSBOROBEACH.COM



RELATED DEZER DEVELOPMENT ARQUITECTONICA

The dimensions stated for this floor plan are approximate because there are various recognized methods for calculating the square footage of a unit. The square footage stated here is calculated from the exterior boundaries of the exterior walls to the centerline of interior demising walls without deductions for cutouts, curves, or architectural features. This method typically results in quoted dimensions greater than the dimensions that would be determined by using other accepted methods. The definition of "lineal" and the calculation method to be relied upon is set forth by the Developer in Developer's prospectus which method may result in a square footage calculation less than the result of the calculation method used here. Readings depict features not included with purchase, but which are available at an additional cost such as wine bar and closet millwork among others. Consult the Developer's prospectus to learn what is included with Unit purchase and to understand Unit dimensions. 2023 © HILLSBORO MILE PROPERTY OWNER, LLC, with all rights reserved.



OCEANFRONT

Residences 205-905

4 Bedroom | 6.5 Bathroom
with Family Room & Service Quarters

or 5 Bedroom | 6.5 Bathroom
with Den & Service Quarters

Residences 205-505

UNIT	5,030 SF
BALCONY	1,280 SF
TOTAL	6,310 SF

Residences 605-805

UNIT	5,030 SF
BALCONY	1,229 SF
TOTAL	6,259 SF

Residences 905

UNIT	5,030 SF
BALCONY	1,280 SF
TOTAL	6,310 SF

Intimate Oceanfront Living

A Rosewood Residence

DEVELOPERS
The Related Group & Dezer Development

ARCHITECT
Arquitectonica

INTERIOR DESIGNER
Studio Piet Boon

1180 Hillsboro Mile
Hillsboro Beach, Florida 33062

Inquiries 754 202 1225

Info@ResidencesHillsboroBeach.com
RESIDENCESHILLSBOROBEACH.COM



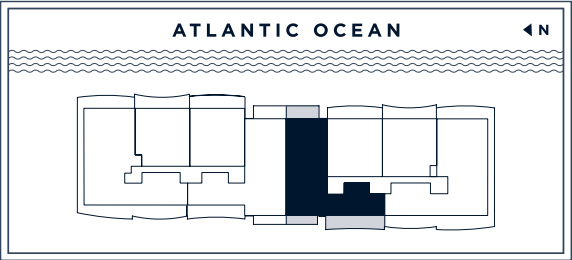
RELATED DEZER DEVELOPMENT ARQUITECTONICA

The dimensions stated for this floor plan are approximate because there are various recognized methods for calculating the square footage of a unit. The square footage stated here is calculated from the exterior boundaries of the exterior walls to the centerline of interior demising walls without deductions for cutouts, curves, or architectural features. This method typically results in quoted dimensions greater than the dimensions that would be determined by using other accepted methods. The definition of "unit" and the calculation method to be relied upon is set forth by the Developer in Developer's prospectus which method may result in a square footage calculation less than the result of the calculation method used here. Readings depict features not included with purchase, but which are available at an additional cost such as wine bar and closet millwork among others. Consult the Developer's prospectus to learn what is included with Unit purchase and to understand Unit dimensions. 2023 © HILLSBORO MILE PROPERTY OWNER, LLC with all rights reserved.



BALCONY VARIATION:
RESIDENCES 605, 705, 805

ALTERNATIVE IN 205-905
DEN & 5 BEDROOMS



OCEANFRONT

Residences 206 - 806

2 Bedroom | 2.5 Bathroom & Den

Residences 206-506

UNIT	2,804 SF
BALCONY	595 SF
TOTAL	3,399 SF

Residences 606-806

UNIT	2,804 SF
BALCONY	562 SF
TOTAL	3,366 SF

Intimate Oceanfront Living

A Rosewood Residence

DEVELOPERS
The Related Group & Dezer Development

ARCHITECT
Arquitectonica

INTERIOR DESIGNER
Studio Piet Boon

1180 Hillsboro Mile
Hillsboro Beach, Florida 33062

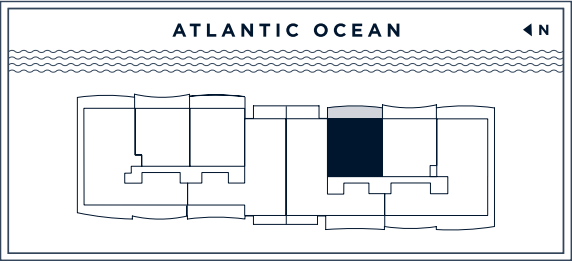
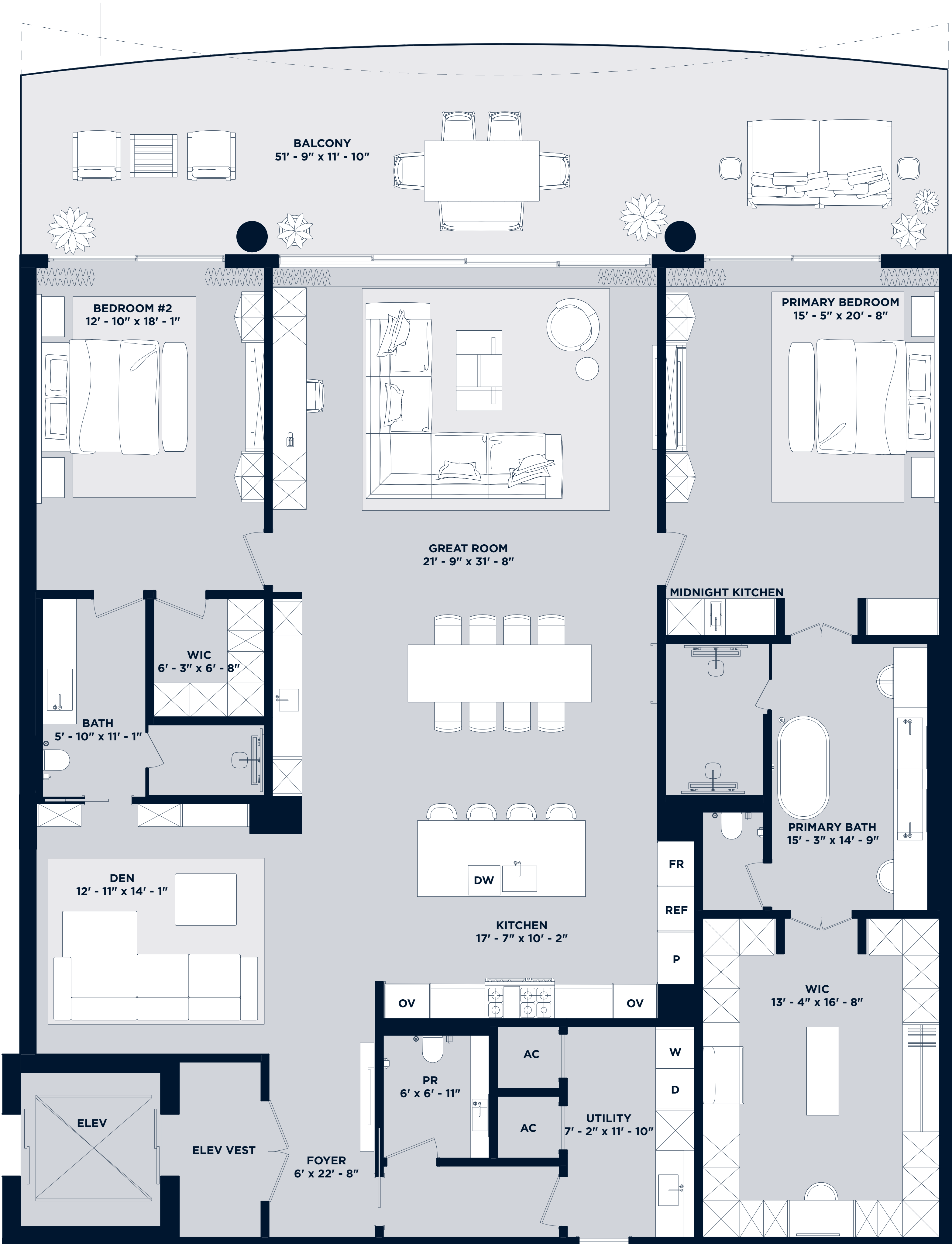
Inquiries 754 202 1225

Info@ResidencesHillsboroBeach.com
RESIDENCESHILLSBOROBEACH.COM



RELATED DEZER DEVELOPMENT ARQUITECTONICA

BALCONY VARIATION:
RESIDENCES 606-806



The dimensions stated for this floor plan are approximate because there are various recognized methods for calculating the square footage of a unit. The square footage stated here is calculated from the exterior boundaries of the exterior walls to the centerline of interior demising walls without deductions for cutouts, curves, or architectural features. This method typically results in quoted dimensions greater than the dimensions that would be determined by using other accepted methods. The definition of "unit" and the calculation method to be relied upon is set forth by the Developer in Developer's prospectus which method may result in a square footage calculation less than the result of the calculation method used here. Readings depict features not included with purchase, but which are available at an additional cost such as wine bar and closet millwork among others. Consult the Developer's prospectus to learn what is included with unit purchase and to understand unit dimensions. 2023 © HILLSBORO MILE PROPERTY OWNER, LLC with all rights reserved.

OCEANFRONT

Residences 207-807

2 Bedroom | 2.5 Bathroom & Den

Residences 207-507

UNIT	2,813 SF
BALCONY	571 SF
TOTAL	3,384 SF

Residences 607-807

UNIT	2,813 SF
BALCONY	579 SF
TOTAL	3,392 SF

Intimate Oceanfront Living

A Rosewood Residence

DEVELOPERS
The Related Group & Dezer Development

ARCHITECT
Arquitectonica

INTERIOR DESIGNER
Studio Piet Boon

1180 Hillsboro Mile
Hillsboro Beach, Florida 33062

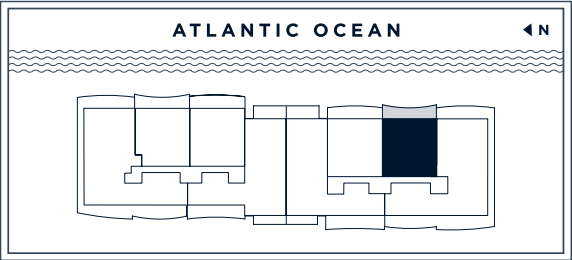
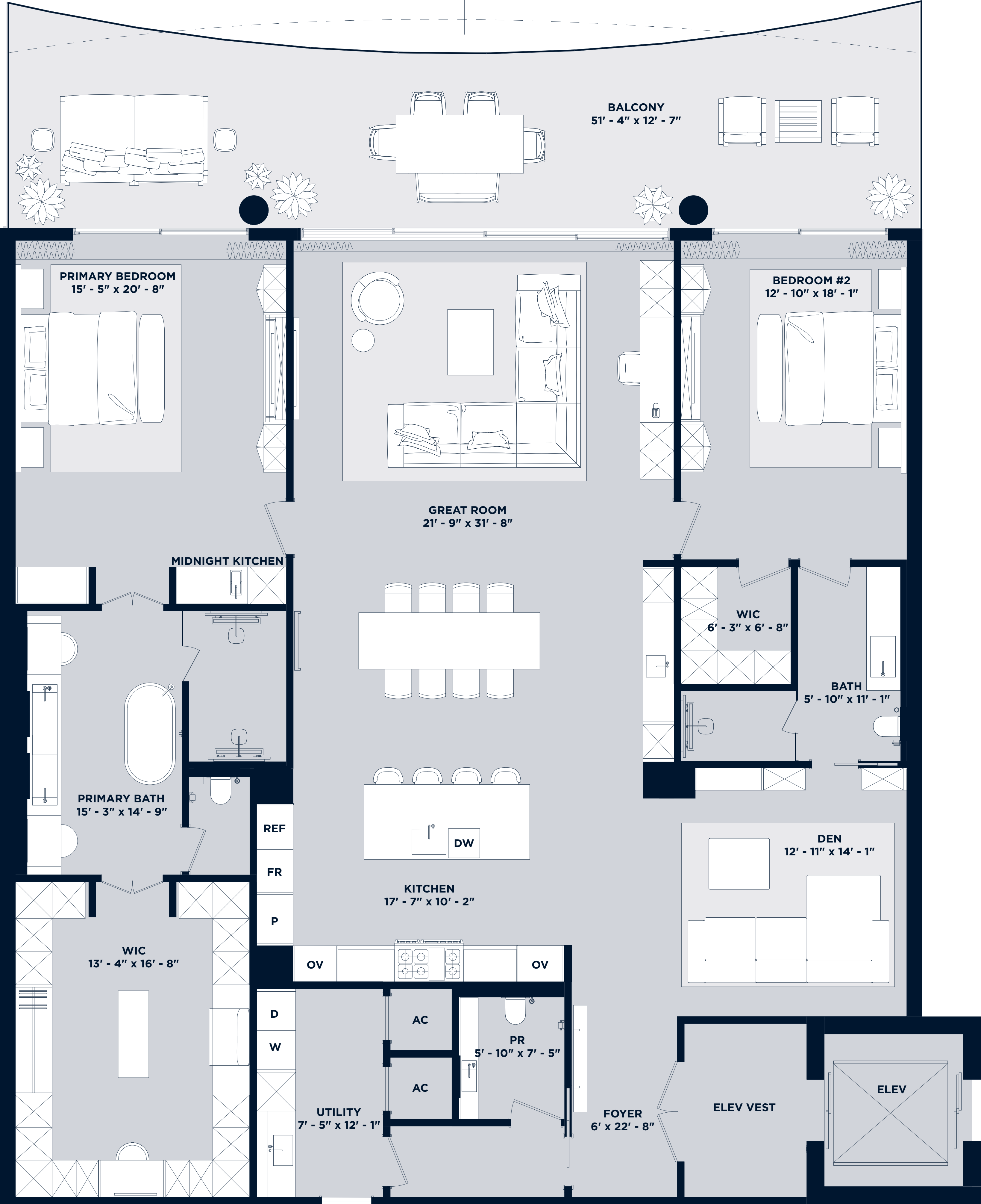
Inquiries 754 202 1225

Info@ResidencesHillsboroBeach.com
RESIDENCESHILLSBOROBEACH.COM

RELATED DEZER ESTABLISHMENT ARQUITECTONICA

The dimensions stated for this floor plan are approximate because there are various recognized methods for calculating the square footage of a unit. The square footage stated here is calculated from the exterior boundaries of the exterior walls to the centerline of interior demising walls without deductions for cutouts, curves, or architectural features. This method typically results in quoted dimensions greater than the dimensions that would be determined by using other accepted methods. The definition of "unit" and the calculation method to be relied upon is set forth by the Developer in Developer's prospectus which method may result in a square footage calculation less than the result of the calculation method used here. Readings depict features not included with purchase, but which are available at an additional cost such as wine bar and closet millwork among others. Consult the Developer's prospectus to learn what is included with Unit purchase and to understand Unit dimensions. 2023 © HILLSBORO MILE PROPERTY OWNER, LLC with all rights reserved.

BALCONY VARIATION:
RESIDENCES 607-807



OCEANFRONT

Residences 208 - 808

5 Bedroom | 6.5 Bathroom
with Family Room & Service Quarters

Residences 208-508

UNIT	5,640 SF
BALCONY	2,405 SF
TOTAL	8,045 SF

Residences 608-808

UNIT	5,640 SF
BALCONY	2,242 SF
TOTAL	7,882 SF

Intimate Oceanfront Living

A Rosewood Residence

DEVELOPERS
The Related Group & Dezer Development

ARCHITECT
Arquitectonica

INTERIOR DESIGNER
Studio Piet Boon

1180 Hillsboro Mile
Hillsboro Beach, Florida 33062

Inquiries 754 202 1225

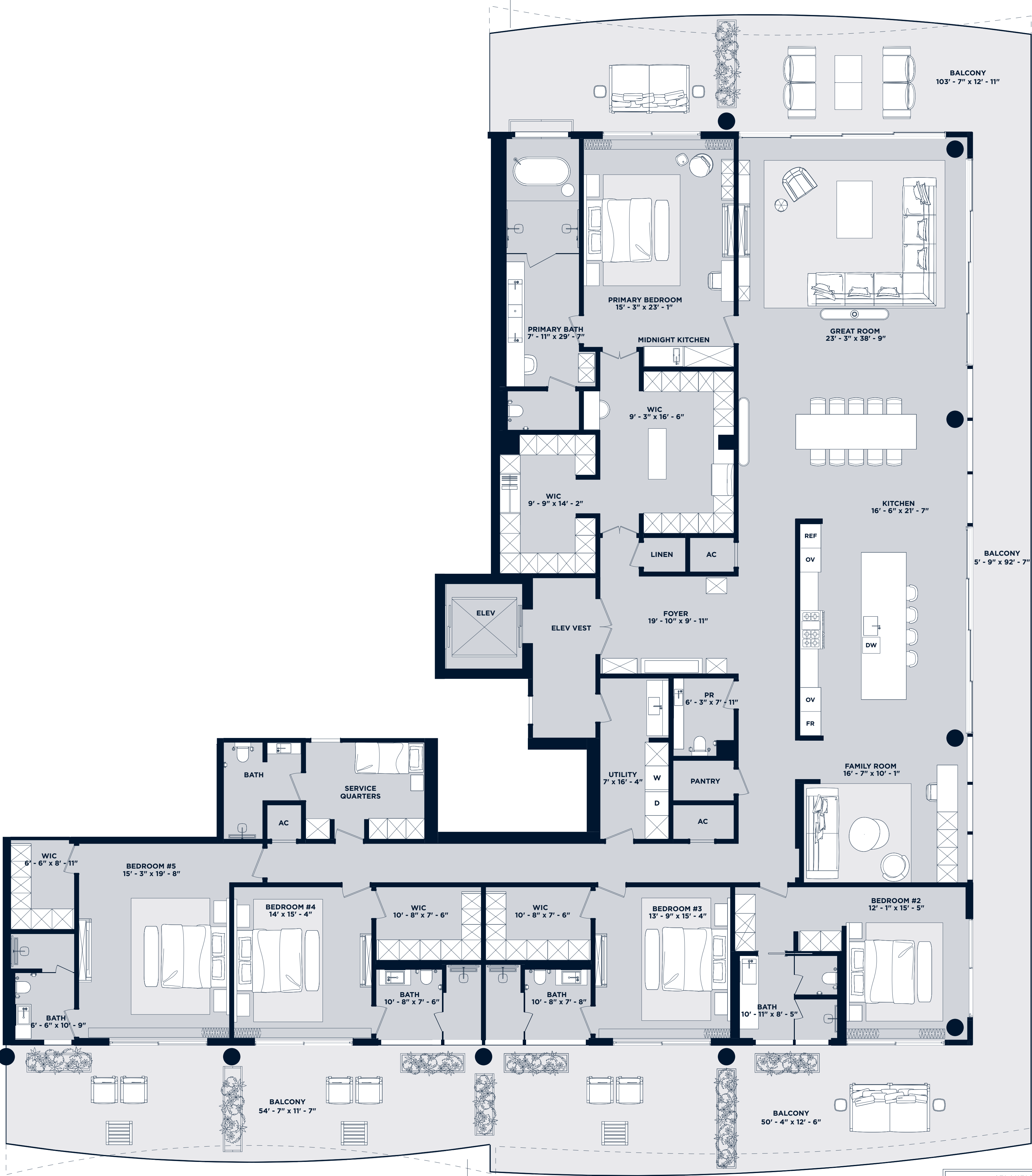
Info@ResidencesHillsboroBeach.com
RESIDENCESHILLSBOROBEACH.COM



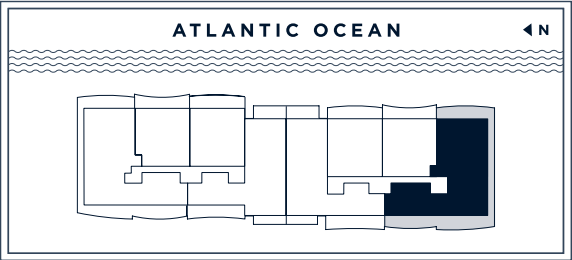
RELATED **DEZER** **ARQUITECTONICA**

The dimensions stated for this floor plan are approximate because there are various recognized methods for calculating the square footage of a unit. The square footage stated here is calculated from the exterior boundaries of the exterior walls to the exterior of interior demising walls without deductions for columns, curves, or architectural features. This method typically results in quoted dimensions greater than the dimensions that would be determined by using other accepted methods. The definition of "unit" and the calculation method to be relied upon is set forth by the Developer in Developer's prospectus which method may result in a square footage calculation less than the result of the calculation method used here. Readings depict features not included with purchase, but which are available at an additional cost such as wine bar and closet millwork among others. Consult the Developer's prospectus to learn what is included with unit purchase and to understand unit dimensions. 2023 © HILLSBORO MILE PROPERTY OWNER, LLC with all rights reserved.

BALCONY VARIATION:
RESIDENCES 608, 708, 808



BALCONY VARIATION:
RESIDENCES 608, 708, 808



OCEANFRONT

Residences 901 & 1001

5 Bedroom | 6.5 Bathroom
with Family Room & Service Quarters

Residence 901

UNIT	5,625 SF
BALCONY	2,338 SF
ROOFTOP	3,915 SF
TOTAL	11,878 SF

Residence 1001

UNIT	5,625 SF
BALCONY	2,338 SF
ROOFTOP	3,690 SF
TOTAL	11,653 SF

Intimate Oceanfront Living

A Rosewood Residence

DEVELOPERS
The Related Group & Dezer Development

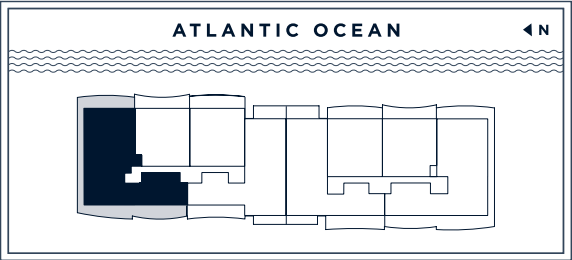
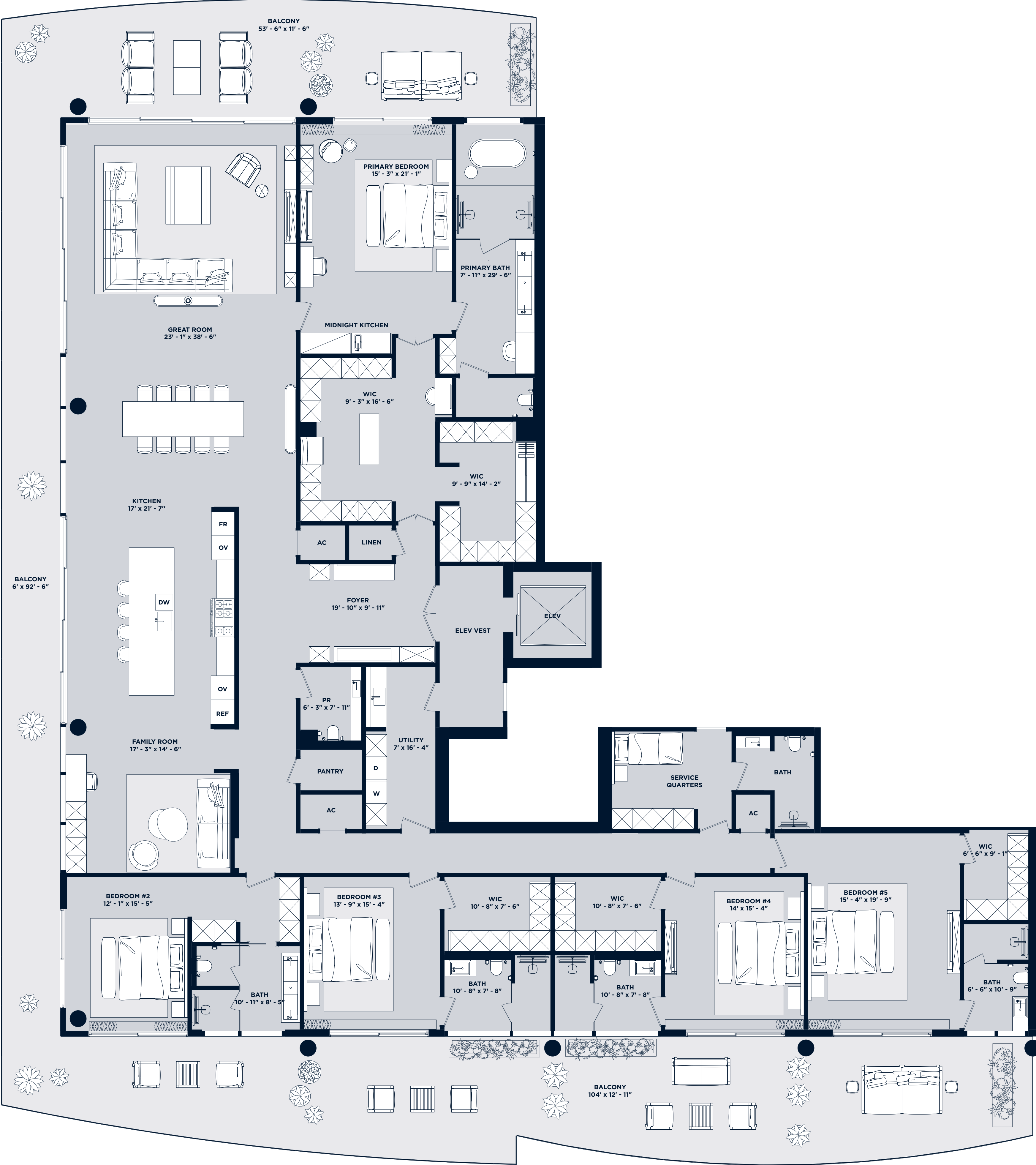
ARCHITECT
Arquitectonica

INTERIOR DESIGNER
Studio Piet Boon

1180 Hillsboro Mile
Hillsboro Beach, Florida 33062

Inquiries 754 202 1225

Info@ResidencesHillsboroBeach.com
RESIDENCESHILLSBOROBEACH.COM



OCEANFRONT

Residences 902 & 1002

4 Bedroom | 6.5 Bathroom
with Den & Service Quarters

Residence 902

UNIT	5,613 SF
BALCONY	1,166 SF
ROOFTOP	2,439 SF
TOTAL	9,218 SF

Residence 1002

UNIT	5,613 SF
BALCONY	1,166 SF
ROOFTOP	4,840 SF
TOTAL	11,619 SF

Intimate Oceanfront Living

A Rosewood Residence

DEVELOPERS
The Related Group & Dezer Development

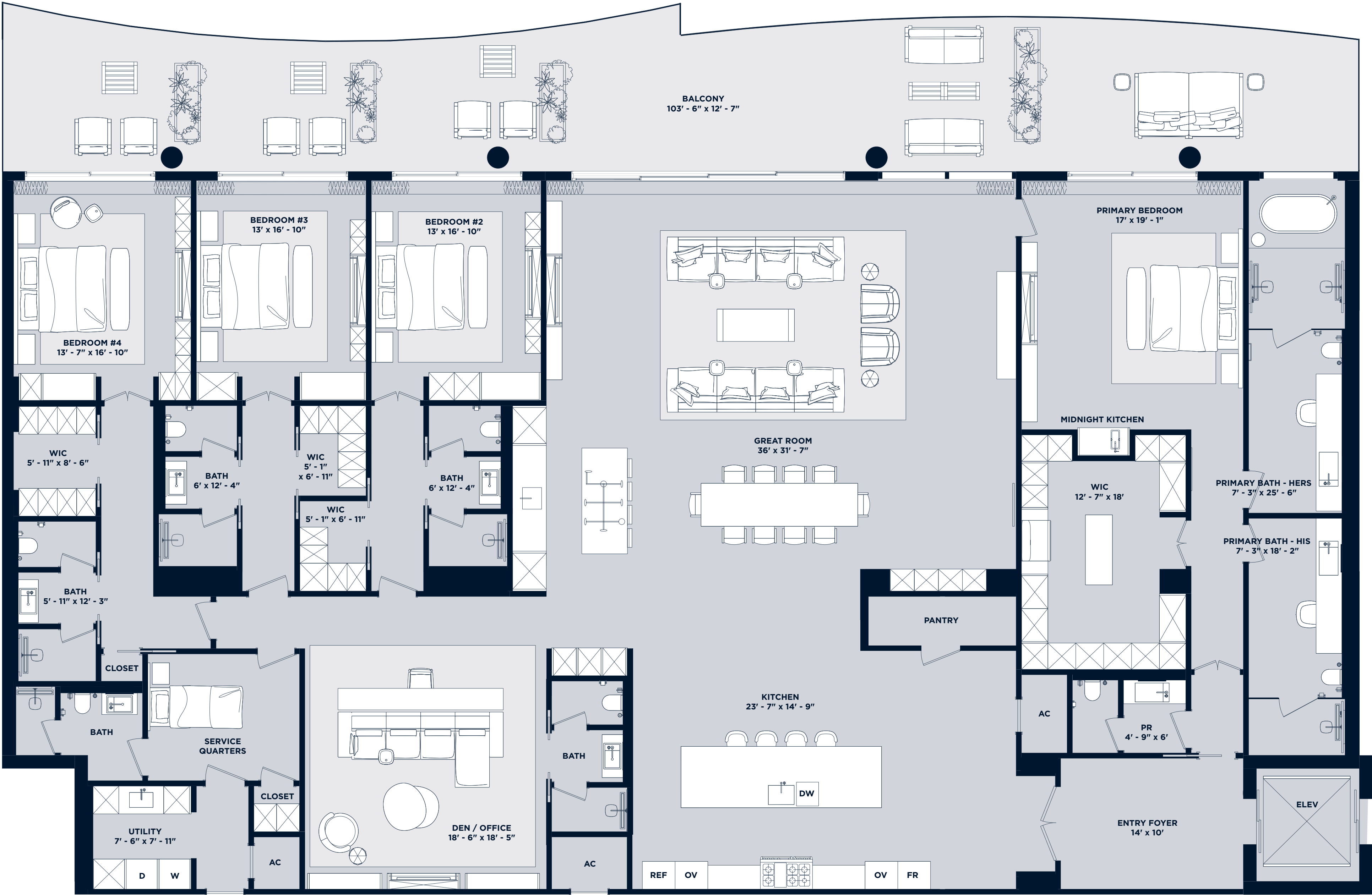
ARCHITECT
Arquitectonica

INTERIOR DESIGNER
Studio Piet Boon

1180 Hillsboro Mile
Hillsboro Beach, Florida 33062

Inquiries 754 202 1225

Info@ResidencesHillsboroBeach.com
RESIDENCESHILLSBOROBEACH.COM

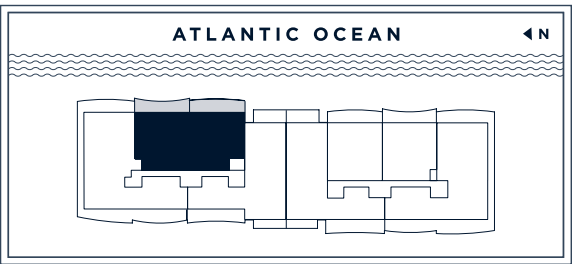


RELATED

DEZER
DEVELOPMENT

ARQUITECTONICA

The dimensions stated for this floor plan are approximate because there are various recognized methods for calculating the square footage of a unit. The square footage stated here is calculated from the exterior boundaries of the exterior walls to the centerline of interior demising walls without deductions for cutouts, curves, or architectural features. This method typically results in quoted dimensions greater than the dimensions that would be determined by using other accepted methods. The definition of "lineal" and the calculation method to be relied upon is set forth by the Developer in Developer's prospectus which method may result in a square footage calculation less than the result of the calculation method used here. Readings depict features not included with purchase, but which are available at an additional cost such as wine bar and closet millwork among others. Consult the Developer's prospectus to learn what is included with unit purchase and to understand unit dimensions. 2023 © HILLSBORO MILE PROPERTY OWNER, LLC with all rights reserved.



OCEANFRONT

Residences 907 & 1007

4 Bedroom | 6.5 Bathroom
with Den & Service Quarters

Residence 907

UNIT	5,613 SF
BALCONY	1,150 SF
ROOFTOP	2,395 SF
TOTAL	9,158 SF

Residence 1007

UNIT	5,613 SF
BALCONY	1,150 SF
ROOFTOP	4,430 SF
TOTAL	11,193 SF

Intimate Oceanfront Living

A Rosewood Residence

DEVELOPERS
The Related Group & Dezer Development

ARCHITECT
Arquitectonica

INTERIOR DESIGNER
Studio Piet Boon

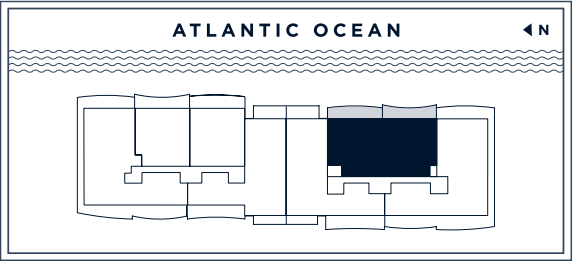
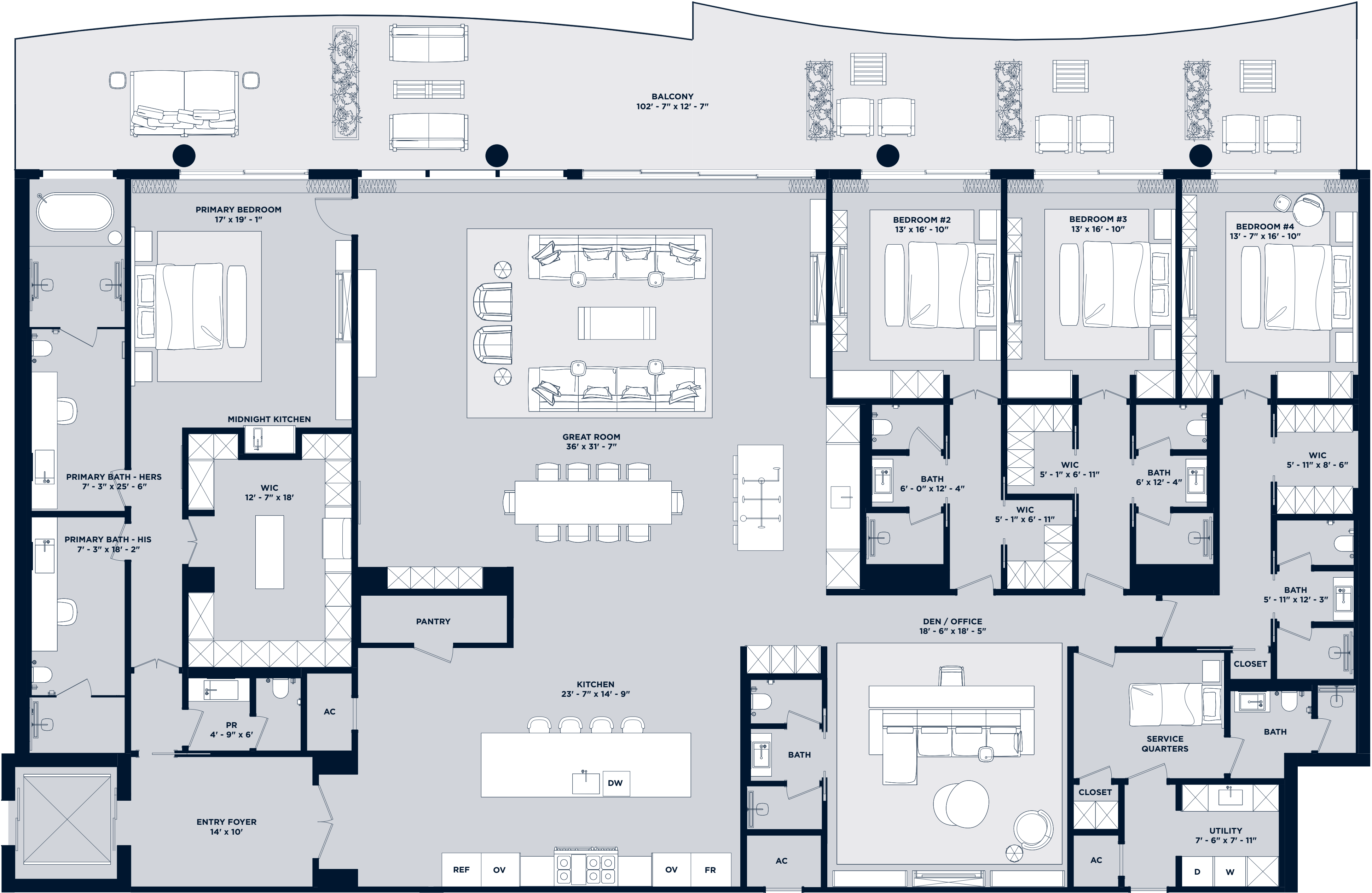
1180 Hillsboro Mile
Hillsboro Beach, Florida 33062

Inquiries 754 202 1225

Info@ResidencesHillsboroBeach.com
RESIDENCESHILLSBOROBEACH.COM



RELATED DEZER DEVELOPMENT ARQUITECTONICA



The dimensions stated for this floor plan are approximate because there are various recognized methods for calculating the square footage of a unit. The square footage stated here is calculated from the exterior boundaries of the exterior walls to the centerline of interior demising walls without deductions for cutouts, curves, or architectural features. This method typically results in quoted dimensions greater than the dimensions that would be determined by using other accepted methods. The definition of "lineal" and the calculation method to be relied upon is set forth by the Developer in Developer's prospectus which method may result in a square footage calculation less than the result of the calculation method used here. Readings depict features not included with purchase, but which are available at an additional cost such as wine bar and closet millwork among others. Consult the Developer's prospectus to learn what is included with unit purchase and to understand unit dimensions. 2023 © HILLSBORO MILE PROPERTY OWNER, LLC with all rights reserved.

OCEANFRONT

Residences 908 & 1008

5 Bedroom | 6.5 Bathroom
with Family Room & Service Quarters

Residence 908

UNIT	5,640 SF
BALCONY	2,405 SF
ROOFTOP	4,085 SF
TOTAL	12,130 SF

Residence 1008

UNIT	5,640 SF
BALCONY	2,405 SF
ROOFTOP	3,695 SF
TOTAL	11,740 SF

Intimate Oceanfront Living

A Rosewood Residence

DEVELOPERS
The Related Group & Dezer Development

ARCHITECT
Arquitectonica

INTERIOR DESIGNER
Studio Piet Boon

1180 Hillsboro Mile
Hillsboro Beach, Florida 33062

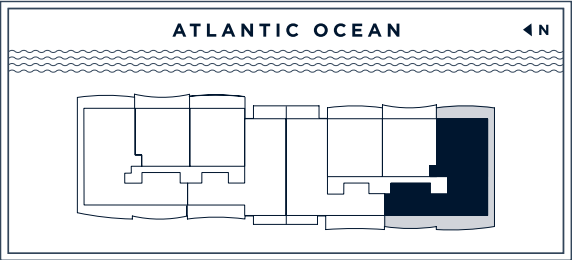
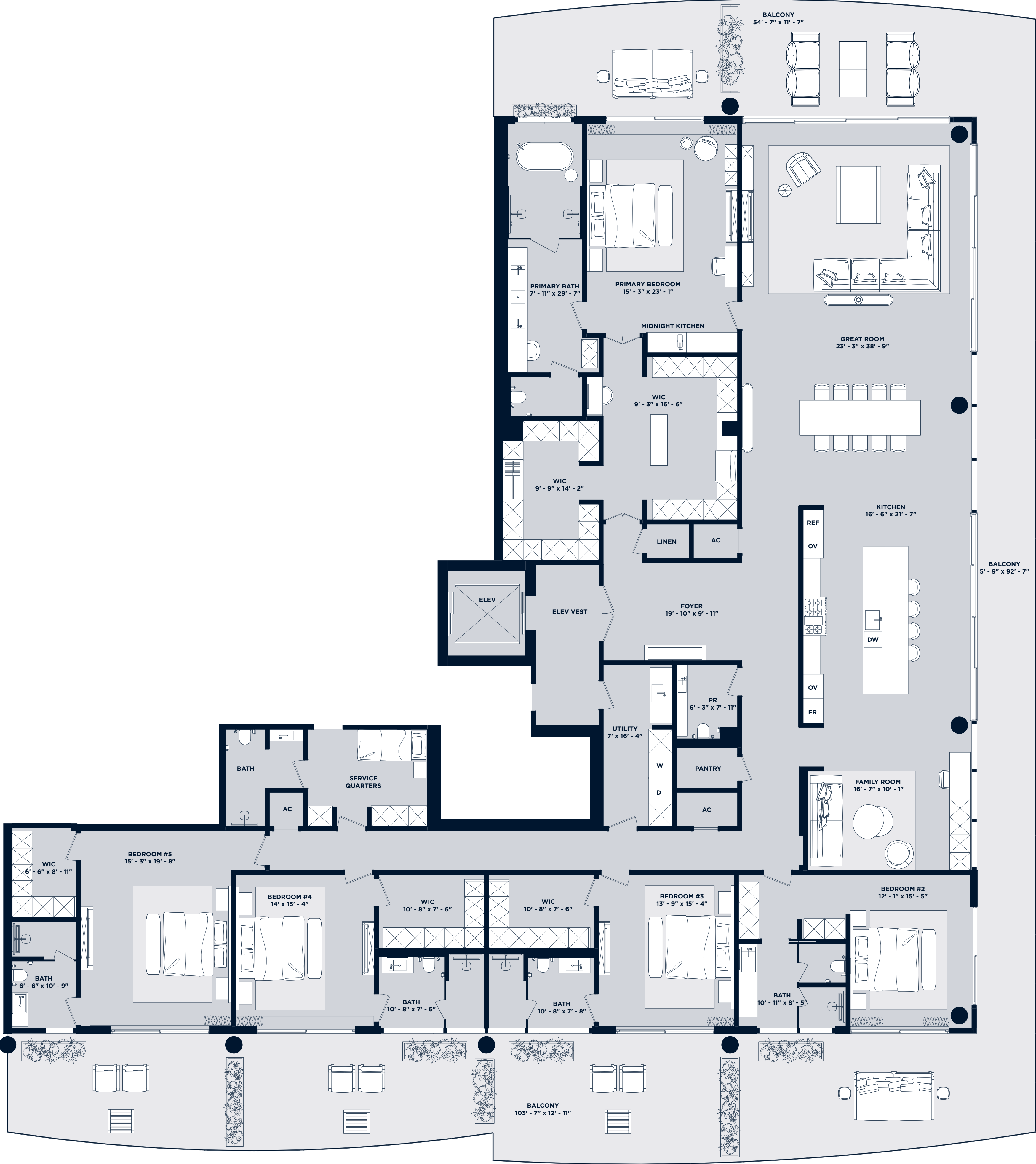
Inquiries 754 202 1225

Info@ResidencesHillsboroBeach.com
RESIDENCESHILLSBOROBEACH.COM



RELATED DEZER DEVELOPMENT ARQUITECTONICA

The dimensions stated for this floor plan are approximate because there are various recognized methods for calculating the square footage of a unit. The square footage stated here is calculated from the exterior boundaries of the exterior walls to the centerline of interior demising walls without deductions for cutouts, curves, or architectural features. This method typically results in quoted dimensions greater than the dimensions that would be determined by using other accepted methods. The definition of "lineal" and the calculation method to be relied upon is set forth by the Developer in Developer's prospectus which method may result in a square footage calculation less than the result of the calculation method used here. Readings depict features not included with purchase, but which are available at an additional cost such as wine bar and closet millwork among others. Consult the Developer's prospectus to learn what is included with unit purchase and to understand unit dimensions. 2023 © HILLSBORO MILE PROPERTY OWNER, LLC with all rights reserved.



OCEANFRONT

Residence 1005

4 Bedroom | 6.5 Bathroom
with Family Room & Service Quarters

or 5 Bedroom | 6.5 Bathroom
with Den & Service Quarters

UNIT	5,030 SF
BALCONY	1,280 SF
ROOFTOP	2,200 SF
TOTAL	8,510 SF

Intimate Oceanfront Living

A Rosewood Residence

DEVELOPERS
The Related Group & Dezer Development

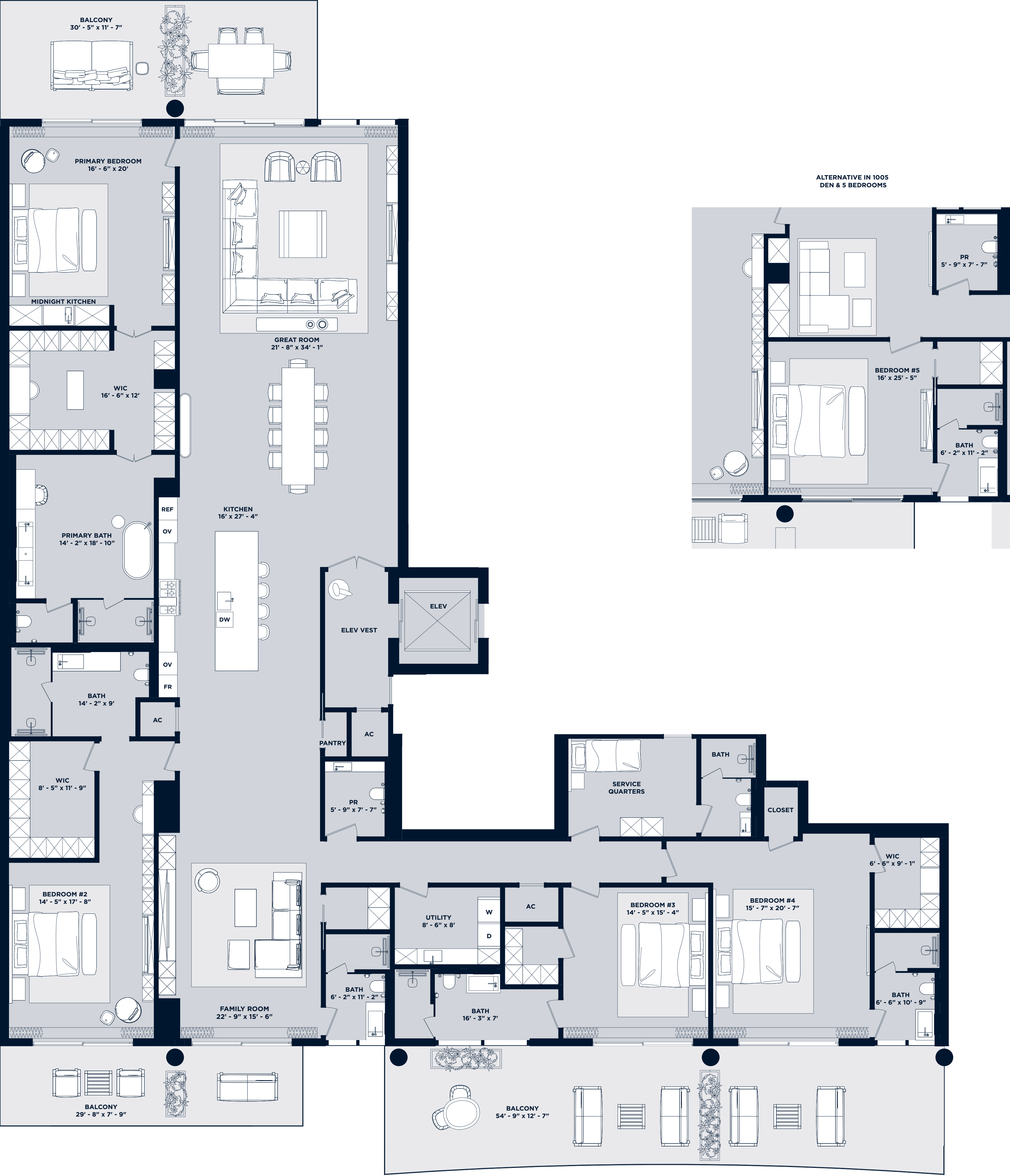
ARCHITECT
Arquitectonica

INTERIOR DESIGNER
Studio Piet Boon

1180 Hillsboro Mile
Hillsboro Beach, Florida 33062

Inquiries 754 202 1225

Info@ResidencesHillsboroBeach.com
RESIDENCESHILLSBOROBEACH.COM



The dimensions stated for this floor plan are approximate because there are various recognized methods for calculating the square footage of a unit. The square footage stated here is calculated from the exterior boundaries of the exterior walls to the centerline of interior demising walls without deductions for cutouts, curves, or architectural features. This method typically results in quoted dimensions greater than the dimensions that would be determined by using other accepted methods. The definition of "lineal" and the calculation method to be relied upon is set forth by the Developer in Developer's prospectus which method may result in a square footage calculation less than the result of the calculation method used here. Readings depict features not included with purchase, but which are available at an additional cost such as wine bar and closet millwork among others. Consult the Developer's prospectus to learn what is included with unit purchase and to understand unit dimensions. 2023 © HILLSBORO MILE PROPERTY OWNER, LLC with all rights reserved.

ROSEWOOD
RESIDENCES
HILLSBORO BEACH

OCEANFRONT
1st Floorplate

ROSEWOOD
RESIDENCES
HILLSBORO BEACH

OCEANFRONT
1st Floor

DEVELOPERS
The Related Group & Dezer Development

ARCHITECT
Arquitectonica

INTERIOR DESIGNER
Studio Piet Boon

1180 Hillsboro Mile
Hillsboro Beach, Florida 33062

Inquiries 754 202 1225

Info@ResidencesHillsboroBeach.com
RESIDENCESHILLSBOROBEACH.COM

RELATED DEZER DEVELOPMENT ARQUITECTONICA

ORAL REPRESENTATIONS CANNOT BE RELIED UPON AS CORRECTLY STATING REPRESENTATIONS OF THE DEVELOPER. FOR CORRECT REPRESENTATIONS, MAKE REFERENCE TO THIS BROCHURE AND THE DOCUMENTS REQUIRED BY SECTION 718.03, FLORIDA STATUTES, TO BE FURNISHED BY A DEVELOPER TO A BUYER OR LESSEE.

NEW YORK RESIDENTS: THE COMPLETE OFFERING TERMS ARE FOUND IN A CPS-2 APPLICATION AVAILABLE FROM THE OFFEROR. FILE NO. CP25-0067.

WARNING: THE CALIFORNIA DEPARTMENT OF REAL ESTATE HAS NOT INSPECTED, EXAMINED, OR QUALIFIED THIS OFFERING.

1180 HILLSBORO MILE CONDOMINIUM (the "Condominium") is marketed as Rosewood Residences Hillsboro Beach and is developed by Hillsboro Mile Property Owner, LLC ("Developer"), which is the member of The Related Group, Dezer Development, and of Rosewood Hotels and Resorts, LLC under license agreements. Rosewood Hotels and Resorts, LLC is not the offeror and makes no representations with respect to any aspect of the Condominium. This is not intended to be an offer to sell, or solicitation of an offer to buy, a condominium unit to residents of any jurisdiction when prohibited by law. There is no guarantee of any view or of any proposed amenities, artwork, design, contributing artists, interior designers, fitness facilities, or restaurants will be available as depicted or at all upon, or following, the completion of the Condominium. Floor plan renderings are not a representation of the use of space and may depict fixtures and furnishings not included with purchase. Consult the prospectus of Developer to understand the amenities, proposed budget, terms, conditions, specifications, fees, unit dimensions, site plans, and to learn what is included with purchase and by payment of regular condominium assessments and to understand what amenities require additional fees or payments. The project graphics, renderings, photographs, and text provided herein are copyrighted works owned by the respective developer unless otherwise credited. 2023 © HILLSBORO MILE PROPERTY OWNER, LLC, with all rights reserved.



ROSEWOOD
RESIDENCES
HILLSBORO BEACH

ROSEWOOD
RESIDENCES
HILLSBORO BEACH

OCEANFRONT
2nd - 8th Floor

DEVELOPERS
The Related Group & Dezer Development

ARCHITECT
Arquitectonica

INTERIOR DESIGNER
Studio Piet Boon

1180 Hillsboro Mile
Hillsboro Beach, Florida 33062

Inquiries 754 202 1225

Info@ResidencesHillsboroBeach.com
RESIDENCESHILLSBOROBEACH.COM



RELATED DEZER DEVELOPMENT ARQUITECTONICA

ORAL REPRESENTATIONS CANNOT BE RELIED UPON AS CORRECTLY STATING REPRESENTATIONS OF THE DEVELOPER. FOR CORRECT REPRESENTATIONS, MAKE REFERENCE TO THIS BROCHURE AND THE DOCUMENTS REQUIRED BY SECTION 718.03, FLORIDA STATUTES, TO BE FURNISHED BY A DEVELOPER TO A BUYER OR LESSEE.

New York Residents: THE COMPLETE OFFERING TERMS ARE FOUND IN A CPS-2 APPLICATION AVAILABLE FROM THE OFFEROR. FILE NO. CP25-0067.

WARNING: THE CALIFORNIA DEPARTMENT OF REAL ESTATE HAS NOT INSPECTED, EXAMINED, OR QUALIFIED THIS OFFERING.

1180 HILLSBORO MILE CONDOMINIUM (the "Condominium") is marketed as Rosewood Residences Hillsboro Beach and is developed by Hillsboro Mile Property Owner, LLC ("Developer"), which acts the agent of The Related Group, Dezer Development, and of Rosewood Hotels and Resorts, LLC under license agreements. Rosewood Hotels and Resorts, LLC is not the offeror and makes no representations with respect to any aspect of the Condominium. This is not intended to be an offer to sell, or solicitation of an offer to buy, a condominium unit to residents of any jurisdiction when prohibited by law. There is no guarantee of any view or of any proposed amenities, artwork, design, contributing artists, interior designers, fitness facilities, or restaurants will be available as depicted or at all upon, or following, the completion of the Condominium. Floor plan renderings are not a representation of the use of space and may depict fixtures and furnishings not included with purchase. Consult the prospectus of Developer to understand the amenities, proposed budget, terms, conditions, specifications, fees, Unit dimensions, site plans, and to learn what is included with purchase and by payment of regular condominium assessments and to understand what amenities require additional fees or payments. The project graphics, renderings, photographs, and text provided herein are copyrighted works owned by the respective developer unless otherwise credited. 2023 © HILLSBORO MILE PROPERTY OWNER, LLC, with all rights reserved.



ROSEWOOD
RESIDENCES
HILLSBORO BEACH

ROSEWOOD
RESIDENCES
HILLSBORO BEACH

OCEANFRONT
9th & 10th Floor

DEVELOPERS
The Related Group & Dezer Development

ARCHITECT
Arquitectonica

INTERIOR DESIGNER
Studio Piet Boon

1180 Hillsboro Mile
Hillsboro Beach, Florida 33062

Inquiries 754 202 1225

Info@ResidencesHillsboroBeach.com
RESIDENCESHILLSBOROBEACH.COM

RELATED DEZER DEVELOPMENT ARQUITECTONICA

ORAL REPRESENTATIONS CANNOT BE RELIED UPON AS CORRECTLY STATING REPRESENTATIONS OF THE DEVELOPER. FOR CORRECT REPRESENTATIONS, MAKE REFERENCE TO THIS BROCHURE AND THE DOCUMENTS REQUIRED BY SECTION 718.03, FLORIDA STATUTES, TO BE FURNISHED BY A DEVELOPER TO A BUYER OR LESSEE.

New York Residents: THE COMPLETE OFFERING TERMS ARE FOUND IN A CPS-2 APPLICATION AVAILABLE FROM THE OFFEROR, FILE NO. CP25-0067. WARNING: THE CALIFORNIA DEPARTMENT OF REAL ESTATE HAS NOT INSPECTED, EXAMINED, OR QUALIFIED THIS OFFERING.

1180 HILLSBORO MILE CONDOMINIUM (the "Condominium") is marketed as Rosewood Residences Hillsboro Beach and is developed by Hillsboro Mile Property Owner, LLC ("Developer"), which acts the agent of The Related Group, Dezer Development, and of Rosewood Hotels and Resorts, LLC under license agreements. Rosewood Hotels and Resorts, LLC is not the offeror and makes no representations with respect to any aspect of the Condominium. This is not intended to be an offer to sell, or solicitation of an offer to buy, a condominium unit to residents of any jurisdiction when prohibited by law. There is no guarantee of any view or of any proposed amenities, artwork, design, contributing artists, interior designers, fitness facilities, or restaurants will be available as depicted or at all upon, or following, the completion of the Condominium. Floor plan renderings are not a representation of the use of space and may depict fixtures and furnishings not included with purchase. Consult the prospectus of Developer to understand the amenities, proposed budget, terms, conditions, specifications, fees, unit dimensions, site plans, and to learn what is included with purchase and by payment of regular condominium assessments and to understand what amenities require additional fees or payments. The project graphics, renderings, photographs, and text provided herein are copyrighted works owned by the respective developer unless otherwise credited. 2023 © HILLSBORO MILE PROPERTY OWNER, LLC, with all rights reserved.

