

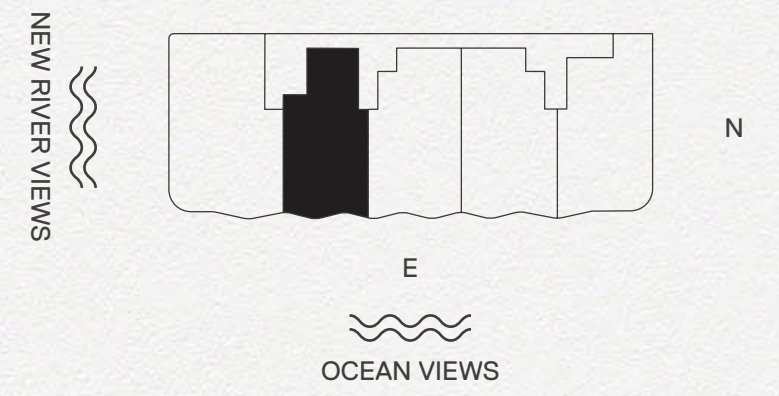
## RESIDENCE 02B



# RESIDENCE 02B

2 Bedrooms | 2.5 Bathrooms

Interior: 1,816 SF | Terrace: 247 SF



The dimensions stated for this unit floor plan are approximate because there are various recognized methods for calculating the square footage of a unit. The square footage stated here is calculated from the exterior boundaries of the exterior walls to the centerline of interior demising walls without deductions for cutouts, curves, or architectural features. This method typically results in quoted dimensions greater than the dimensions that would be determined by using other accepted methods. The definition of "Unit" and the calculation method to be relied upon is set forth by the Developer, RD 3B LLC, in Developer's prospectus; the method set forth in the Developer's prospectus may result in a square footage calculation less than the method used here. Consult the Developer's prospectus for information on what is offered with the Unit and the calculation of the Unit square footage and dimensions.



## RESIDENCE 03A

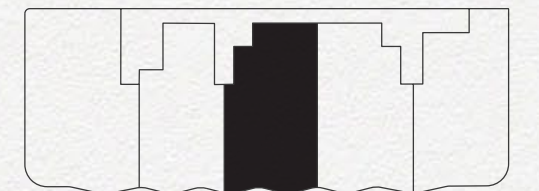


# RESIDENCE 03A

3 Bedrooms | 3.5 Bathrooms

Interior: 2,144 SF | Terrace: 265 SF

NEW RIVER VIEWS



E  
OCEAN VIEWS

N



The dimensions stated for this unit floor plan are approximate because there are various recognized methods for calculating the square footage of a unit. The square footage stated here is calculated from the exterior boundaries of the exterior walls to the centerline of interior demising walls without deductions for cutouts, curves, or architectural features. This method typically results in quoted dimensions greater than the dimensions that would be determined by using other accepted methods. The definition of "Unit" and the calculation method to be relied upon is set forth by the Developer, RD 3B LLC, in Developer's prospectus; the method set forth in the Developer's prospectus may result in a square footage calculation less than the method used here. Consult the Developer's prospectus for information on what is offered with the Unit and the calculation of the Unit square footage and dimensions.



## RESIDENCE 03B

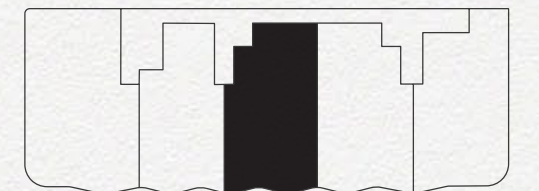


# RESIDENCE 03B

3 Bedrooms | 3.5 Bathrooms

Interior: 2,138 SF | Terrace: 267 SF

NEW RIVER VIEWS



E  
OCEAN VIEWS



The dimensions stated for this unit floor plan are approximate because there are various recognized methods for calculating the square footage of a unit. The square footage stated here is calculated from the exterior boundaries of the exterior walls to the centerline of interior demising walls without deductions for cutouts, curves, or architectural features. This method typically results in quoted dimensions greater than the dimensions that would be determined by using other accepted methods. The definition of "Unit" and the calculation method to be relied upon is set forth by the Developer, RD 3B LLC, in Developer's prospectus; the method set forth in the Developer's prospectus may result in a square footage calculation less than the method used here. Consult the Developer's prospectus for information on what is offered with the Unit and the calculation of the Unit square footage and dimensions.



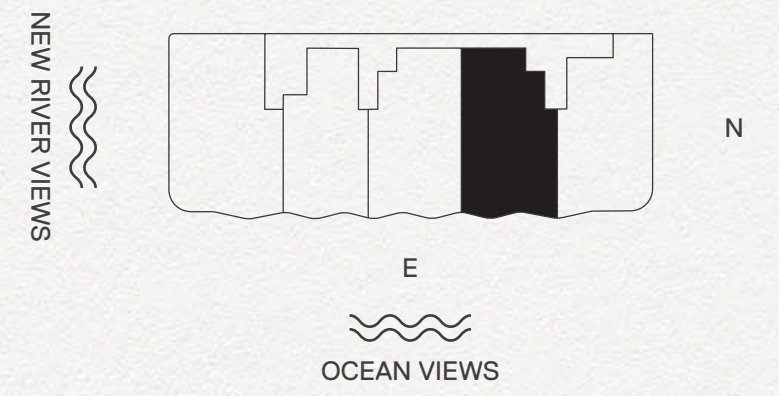
## RESIDENCE 04A



# RESIDENCE 04A

3 Bedrooms | 3.5 Bathrooms

Interior: 2,184 SF | Terrace: 274 SF



The dimensions stated for this unit floor plan are approximate because there are various recognized methods for calculating the square footage of a unit. The square footage stated here is calculated from the exterior boundaries of the exterior walls to the centerline of interior demising walls without deductions for cutouts, curves, or architectural features. This method typically results in quoted dimensions greater than the dimensions that would be determined by using other accepted methods. The definition of "Unit" and the calculation method to be relied upon is set forth by the Developer, RD 3B LLC, in Developer's prospectus; the method set forth in the Developer's prospectus may result in a square footage calculation less than the method used here. Consult the Developer's prospectus for information on what is offered with the Unit and the calculation of the Unit square footage and dimensions.





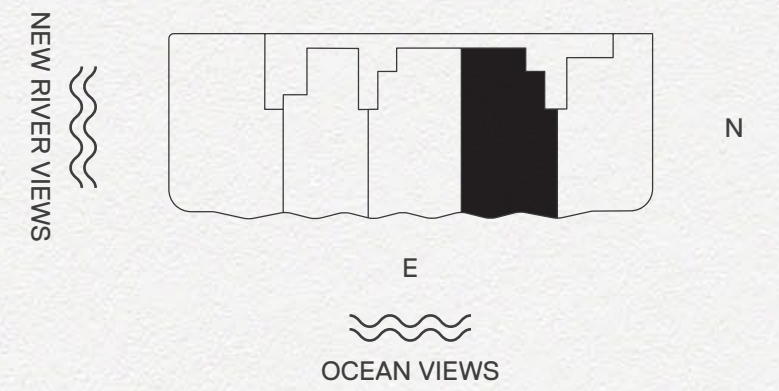
## RESIDENCE 04B



# RESIDENCE 04B

3 Bedrooms | 3.5 Bathrooms

Interior: 2,182 SF | Terrace: 272 SF



The dimensions stated for this unit floor plan are approximate because there are various recognized methods for calculating the square footage of a unit. The square footage stated here is calculated from the exterior boundaries of the exterior walls to the centerline of interior demising walls without deductions for cutouts, curves, or architectural features. This method typically results in quoted dimensions greater than the dimensions that would be determined by using other accepted methods. The definition of "Unit" and the calculation method to be relied upon is set forth by the Developer, RD 3B LLC, in Developer's prospectus; the method set forth in the Developer's prospectus may result in a square footage calculation less than the method used here. Consult the Developer's prospectus for information on what is offered with the Unit and the calculation of the Unit square footage and dimensions.



## RESIDENCE 05A

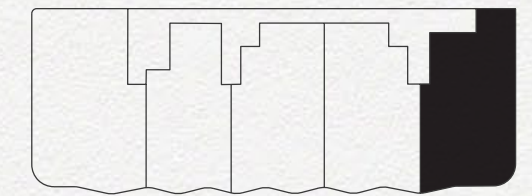


# RESIDENCE 05A

3 Bedrooms | 3.5 Bathrooms

Interior: 2,190 SF | Terrace: 252 SF

NEW RIVER VIEWS



E  
OCEAN VIEWS



The dimensions stated for this unit floor plan are approximate because there are various recognized methods for calculating the square footage of a unit. The square footage stated here is calculated from the exterior boundaries of the exterior walls to the centerline of interior demising walls without deductions for cutouts, curves, or architectural features. This method typically results in quoted dimensions greater than the dimensions that would be determined by using other accepted methods. The definition of "Unit" and the calculation method to be relied upon is set forth by the Developer, RD 3B LLC, in Developer's prospectus; the method set forth in the Developer's prospectus may result in a square footage calculation less than the method used here. Consult the Developer's prospectus for information on what is offered with the Unit and the calculation of the Unit square footage and dimensions.



## RESIDENCE 05B

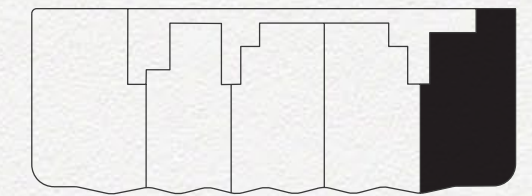


# RESIDENCE 05B

3 Bedrooms | 3.5 Bathrooms

Interior: 2,220 SF | Terrace: 245 SF

NEW RIVER VIEWS



E  
OCEAN VIEWS



The dimensions stated for this unit floor plan are approximate because there are various recognized methods for calculating the square footage of a unit. The square footage stated here is calculated from the exterior boundaries of the exterior walls to the centerline of interior demising walls without deductions for cutouts, curves, or architectural features. This method typically results in quoted dimensions greater than the dimensions that would be determined by using other accepted methods. The definition of "Unit" and the calculation method to be relied upon is set forth by the Developer, RD 3B LLC, in Developer's prospectus; the method set forth in the Developer's prospectus may result in a square footage calculation less than the method used here. Consult the Developer's prospectus for information on what is offered with the Unit and the calculation of the Unit square footage and dimensions.



## RESIDENCE 01A

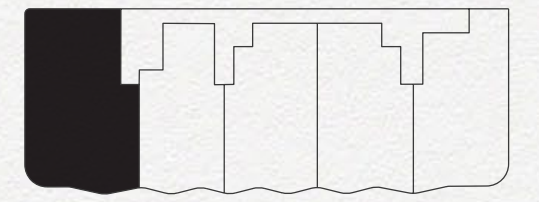


# RESIDENCE 01A

4 Bedrooms | 4 Bathrooms

Interior: 2,516 SF | Terrace: 630 SF

NEW RIVER VIEWS



E  
OCEAN VIEWS



The dimensions stated for this unit floor plan are approximate because there are various recognized methods for calculating the square footage of a unit. The square footage stated here is calculated from the exterior boundaries of the exterior walls to the centerline of interior demising walls without deductions for cutouts, curves, or architectural features. This method typically results in quoted dimensions greater than the dimensions that would be determined by using other accepted methods. The definition of "Unit" and the calculation method to be relied upon is set forth by the Developer, RD 3B LLC, in Developer's prospectus; the method set forth in the Developer's prospectus may result in a square footage calculation less than the method used here. Consult the Developer's prospectus for information on what is offered with the Unit and the calculation of the Unit square footage and dimensions.





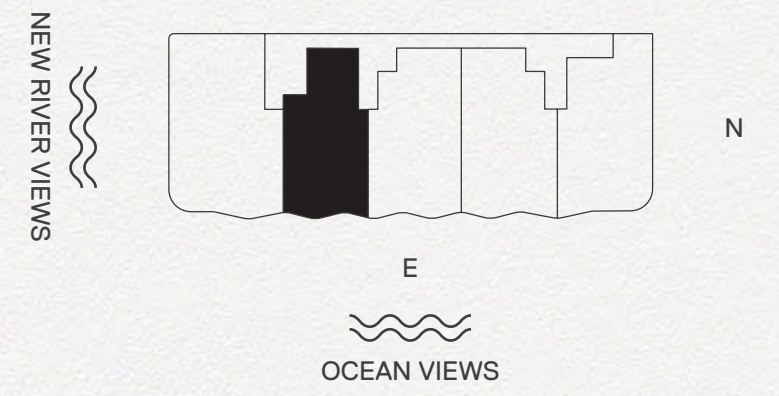
## RESIDENCE 02A



# RESIDENCE 02A

2 Bedrooms | 2.5 Bathrooms

Interior: 1,812 SF | Terrace: 247 SF



The dimensions stated for this unit floor plan are approximate because there are various recognized methods for calculating the square footage of a unit. The square footage stated here is calculated from the exterior boundaries of the exterior walls to the centerline of interior demising walls without deductions for cutouts, curves, or architectural features. This method typically results in quoted dimensions greater than the dimensions that would be determined by using other accepted methods. The definition of "Unit" and the calculation method to be relied upon is set forth by the Developer, RD 3B LLC, in Developer's prospectus; the method set forth in the Developer's prospectus may result in a square footage calculation less than the method used here. Consult the Developer's prospectus for information on what is offered with the Unit and the calculation of the Unit square footage and dimensions.



## RESIDENCE 03A

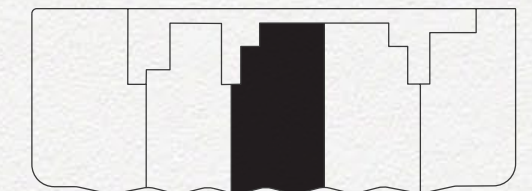


# RESIDENCE 03A

3 Bedrooms | 3.5 Bathrooms

Interior: 2,144 SF | Terrace: 265 SF

NEW RIVER VIEWS



E  
OCEAN VIEWS



The dimensions stated for this unit floor plan are approximate because there are various recognized methods for calculating the square footage of a unit. The square footage stated here is calculated from the exterior boundaries of the exterior walls to the centerline of interior demising walls without deductions for cutouts, curves, or architectural features. This method typically results in quoted dimensions greater than the dimensions that would be determined by using other accepted methods. The definition of "Unit" and the calculation method to be relied upon is set forth by the Developer, RD 3B LLC, in Developer's prospectus; the method set forth in the Developer's prospectus may result in a square footage calculation less than the method used here. Consult the Developer's prospectus for information on what is offered with the Unit and the calculation of the Unit square footage and dimensions.



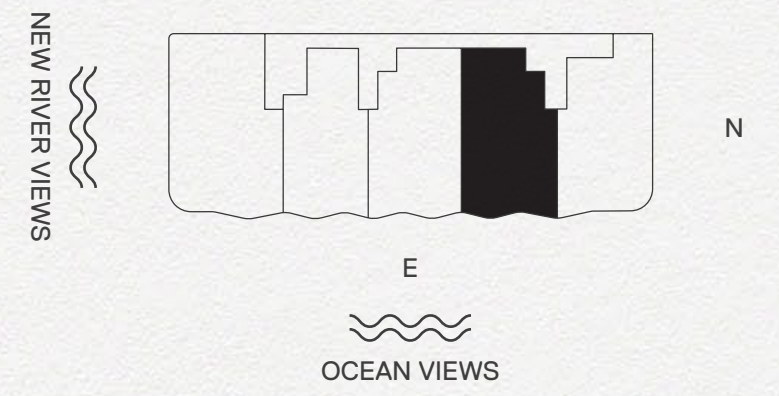
## RESIDENCE 04A



# RESIDENCE 04A

3 Bedrooms | 3.5 Bathrooms

Interior: 2,184 SF | Terrace: 274 SF



The dimensions stated for this unit floor plan are approximate because there are various recognized methods for calculating the square footage of a unit. The square footage stated here is calculated from the exterior boundaries of the exterior walls to the centerline of interior demising walls without deductions for cutouts, curves, or architectural features. This method typically results in quoted dimensions greater than the dimensions that would be determined by using other accepted methods. The definition of "Unit" and the calculation method to be relied upon is set forth by the Developer, RD 3B LLC, in Developer's prospectus; the method set forth in the Developer's prospectus may result in a square footage calculation less than the method used here. Consult the Developer's prospectus for information on what is offered with the Unit and the calculation of the Unit square footage and dimensions.



## RESIDENCE 05A

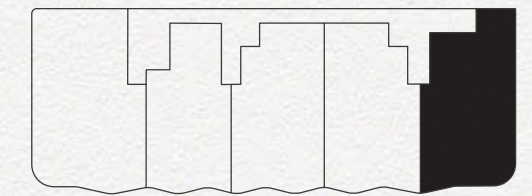


# RESIDENCE 05A

3 Bedrooms | 3.5 Bathrooms

Interior: 2,190 SF | Terrace: 252 SF

NEW RIVER VIEWS



E  
OCEAN VIEWS



The dimensions stated for this unit floor plan are approximate because there are various recognized methods for calculating the square footage of a unit. The square footage stated here is calculated from the exterior boundaries of the exterior walls to the centerline of interior demising walls without deductions for cutouts, curves, or architectural features. This method typically results in quoted dimensions greater than the dimensions that would be determined by using other accepted methods. The definition of "Unit" and the calculation method to be relied upon is set forth by the Developer, RD 3B LLC, in Developer's prospectus; the method set forth in the Developer's prospectus may result in a square footage calculation less than the method used here. Consult the Developer's prospectus for information on what is offered with the Unit and the calculation of the Unit square footage and dimensions.





## RESIDENCE 01B

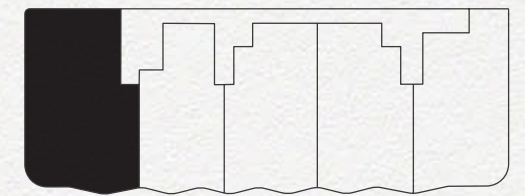


# RESIDENCE 01B

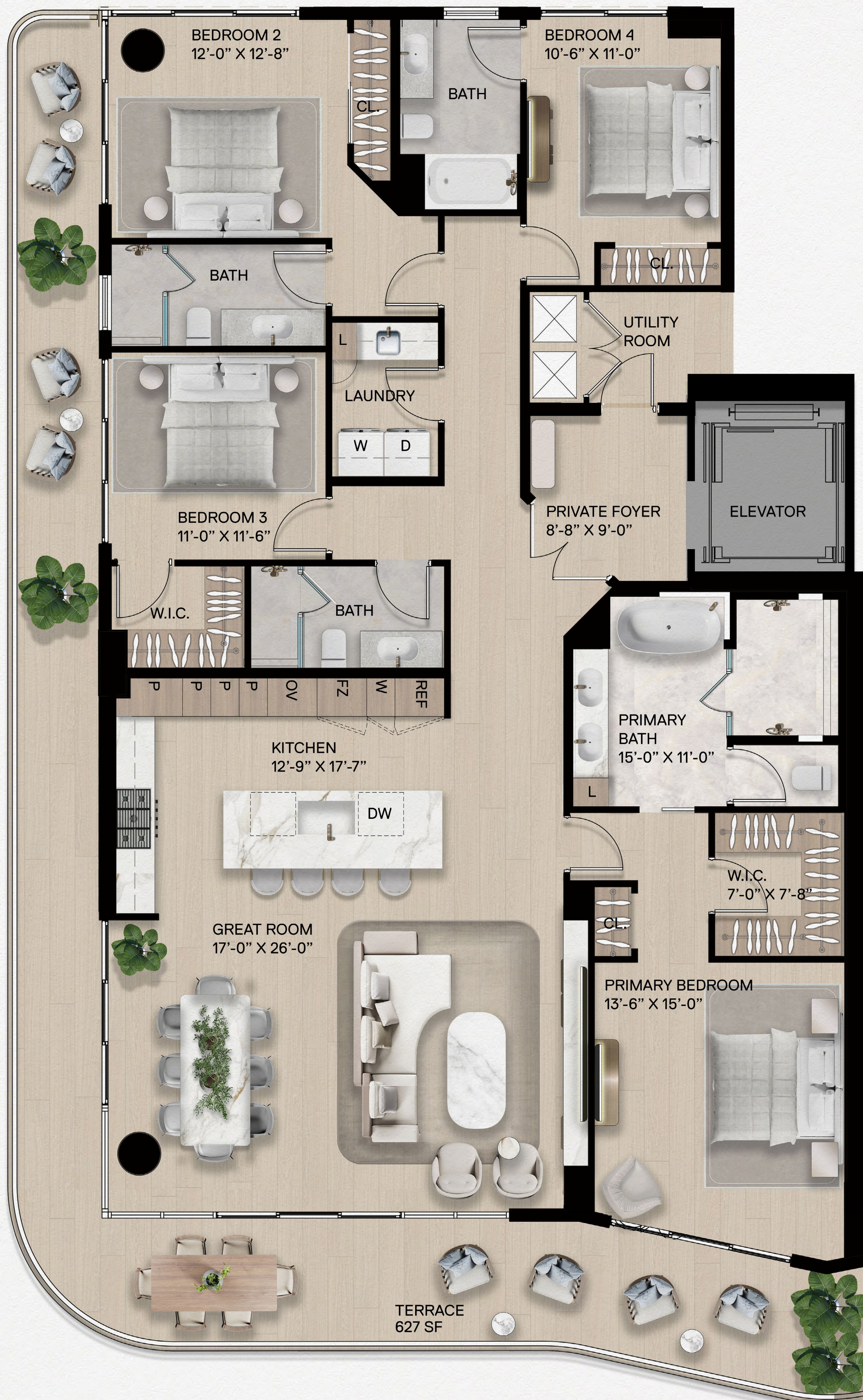
4 Bedrooms | 4 Bathrooms

Interior: 2,502 SF | Terrace: 627 SF

NEW RIVER VIEWS



E  
OCEAN VIEWS



The dimensions stated for this unit floor plan are approximate because there are various recognized methods for calculating the square footage of a unit. The square footage stated here is calculated from the exterior boundaries of the exterior walls to the centerline of interior demising walls without deductions for cutouts, curves, or architectural features. This method typically results in quoted dimensions greater than the dimensions that would be determined by using other accepted methods. The definition of "Unit" and the calculation method to be relied upon is set forth by the Developer, RD 3B LLC, in Developer's prospectus; the method set forth in the Developer's prospectus may result in a square footage calculation less than the method used here. Consult the Developer's prospectus for information on what is offered with the Unit and the calculation of the Unit square footage and dimensions.



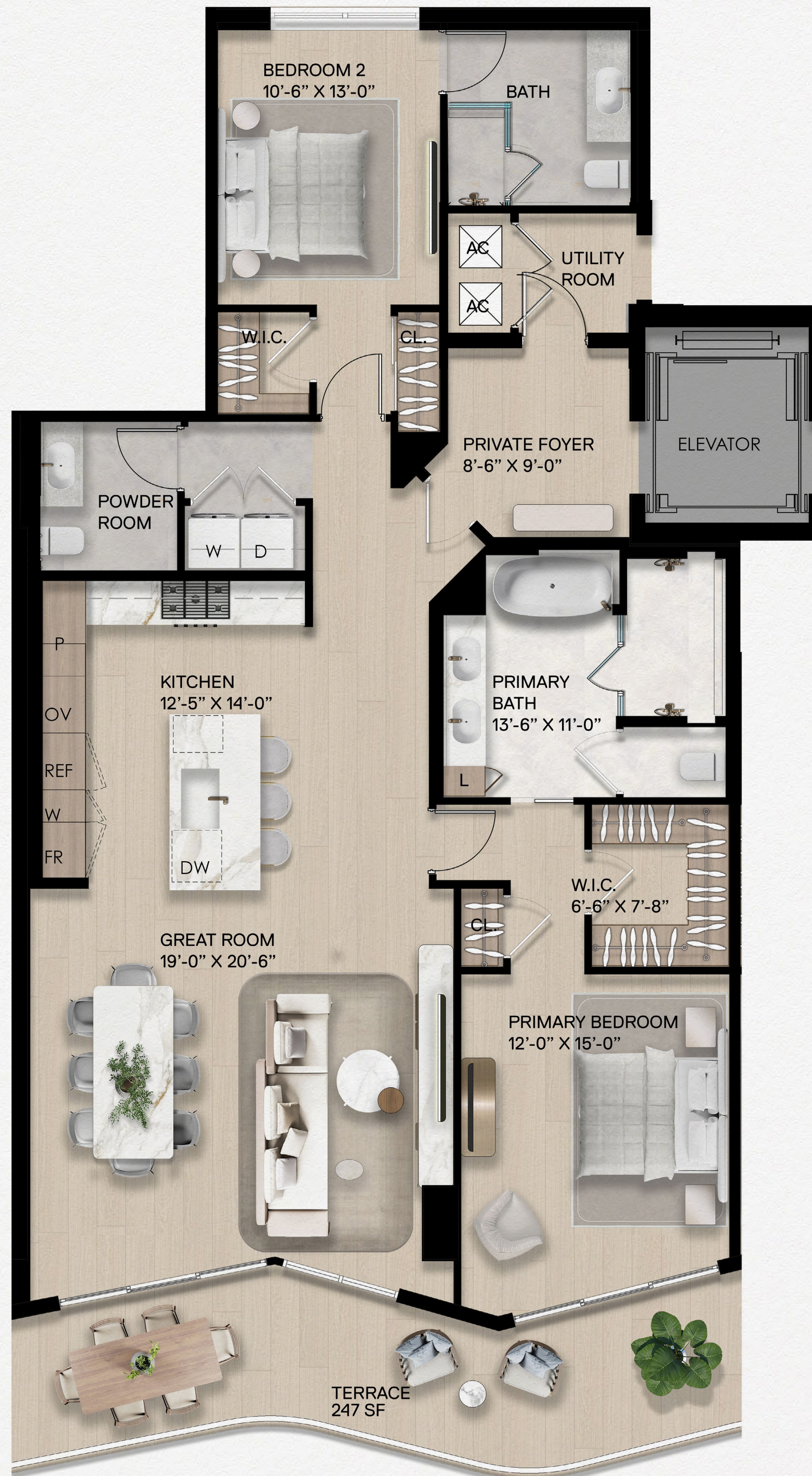
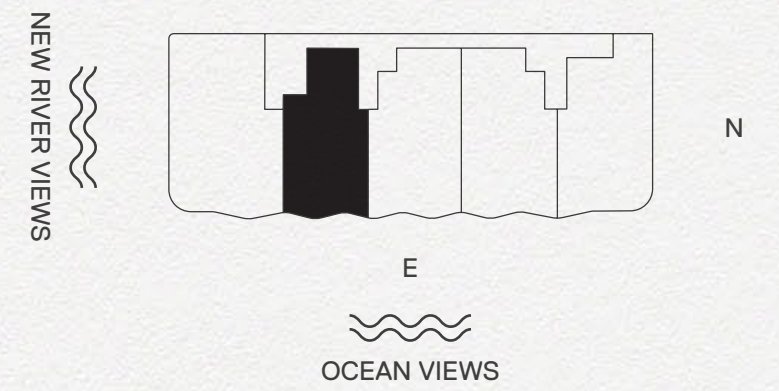
## RESIDENCE 02B



# RESIDENCE 02B

2 Bedrooms | 2.5 Bathrooms

Interior: 1,816 SF | Terrace: 247 SF



The dimensions stated for this unit floor plan are approximate because there are various recognized methods for calculating the square footage of a unit. The square footage stated here is calculated from the exterior boundaries of the exterior walls to the centerline of interior demising walls without deductions for cutouts, curves, or architectural features. This method typically results in quoted dimensions greater than the dimensions that would be determined by using other accepted methods. The definition of "Unit" and the calculation method to be relied upon is set forth by the Developer, RD 3B LLC, in Developer's prospectus; the method set forth in the Developer's prospectus may result in a square footage calculation less than the method used here. Consult the Developer's prospectus for information on what is offered with the Unit and the calculation of the Unit square footage and dimensions.



## RESIDENCE 03B

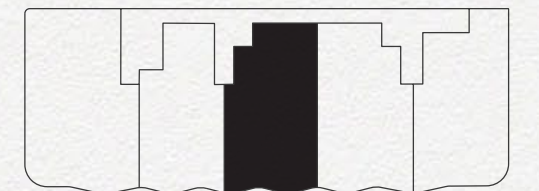


# RESIDENCE 03B

3 Bedrooms | 3.5 Bathrooms

Interior: 2,138 SF | Terrace: 267 SF

NEW RIVER VIEWS



E  
OCEAN VIEWS



The dimensions stated for this unit floor plan are approximate because there are various recognized methods for calculating the square footage of a unit. The square footage stated here is calculated from the exterior boundaries of the exterior walls to the centerline of interior demising walls without deductions for cutouts, curves, or architectural features. This method typically results in quoted dimensions greater than the dimensions that would be determined by using other accepted methods. The definition of "Unit" and the calculation method to be relied upon is set forth by the Developer, RD 3B LLC, in Developer's prospectus; the method set forth in the Developer's prospectus may result in a square footage calculation less than the method used here. Consult the Developer's prospectus for information on what is offered with the Unit and the calculation of the Unit square footage and dimensions.



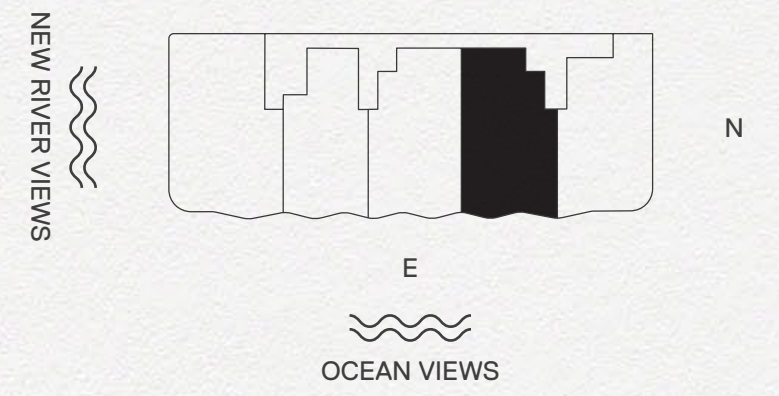
## RESIDENCE 04B



# RESIDENCE 04B

3 Bedrooms | 3.5 Bathrooms

Interior: 2,182 SF | Terrace: 272 SF



The dimensions stated for this unit floor plan are approximate because there are various recognized methods for calculating the square footage of a unit. The square footage stated here is calculated from the exterior boundaries of the exterior walls to the centerline of interior demising walls without deductions for cutouts, curves, or architectural features. This method typically results in quoted dimensions greater than the dimensions that would be determined by using other accepted methods. The definition of "Unit" and the calculation method to be relied upon is set forth by the Developer, RD 3B LLC, in Developer's prospectus; the method set forth in the Developer's prospectus may result in a square footage calculation less than the method used here. Consult the Developer's prospectus for information on what is offered with the Unit and the calculation of the Unit square footage and dimensions.





## RESIDENCE 05B

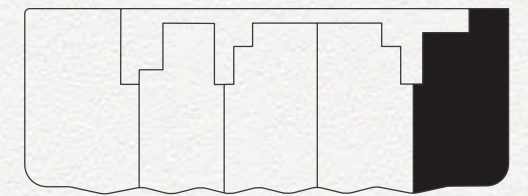


# RESIDENCE 05B

3 Bedrooms | 3.5 Bathrooms

Interior: 2,220 SF | Terrace: 245 SF

NEW RIVER VIEWS



E  
OCEAN VIEWS



The dimensions stated for this unit floor plan are approximate because there are various recognized methods for calculating the square footage of a unit. The square footage stated here is calculated from the exterior boundaries of the exterior walls to the centerline of interior demising walls without deductions for cutouts, curves, or architectural features. This method typically results in quoted dimensions greater than the dimensions that would be determined by using other accepted methods. The definition of "Unit" and the calculation method to be relied upon is set forth by the Developer, RD 3B LLC, in Developer's prospectus; the method set forth in the Developer's prospectus may result in a square footage calculation less than the method used here. Consult the Developer's prospectus for information on what is offered with the Unit and the calculation of the Unit square footage and dimensions.



## RESIDENCE 01A

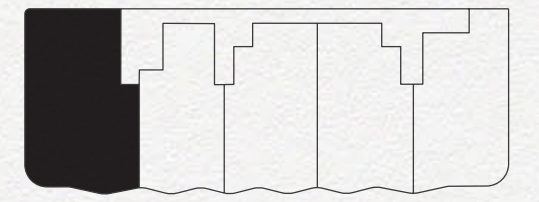


# RESIDENCE 01A

4 Bedrooms | 4 Bathrooms

Interior: 2,516 SF | Terrace: 630 SF

NEW RIVER VIEWS



E  
OCEAN VIEWS



The dimensions stated for this unit floor plan are approximate because there are various recognized methods for calculating the square footage of a unit. The square footage stated here is calculated from the exterior boundaries of the exterior walls to the centerline of interior demising walls without deductions for cutouts, curves, or architectural features. This method typically results in quoted dimensions greater than the dimensions that would be determined by using other accepted methods. The definition of "Unit" and the calculation method to be relied upon is set forth by the Developer, RD 3B LLC, in Developer's prospectus; the method set forth in the Developer's prospectus may result in a square footage calculation less than the method used here. Consult the Developer's prospectus for information on what is offered with the Unit and the calculation of the Unit square footage and dimensions.



## RESIDENCE 01B

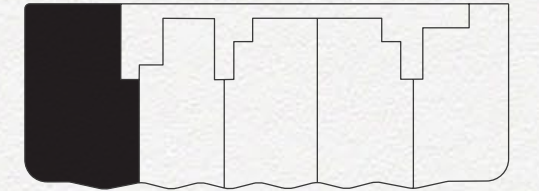


# RESIDENCE 01B

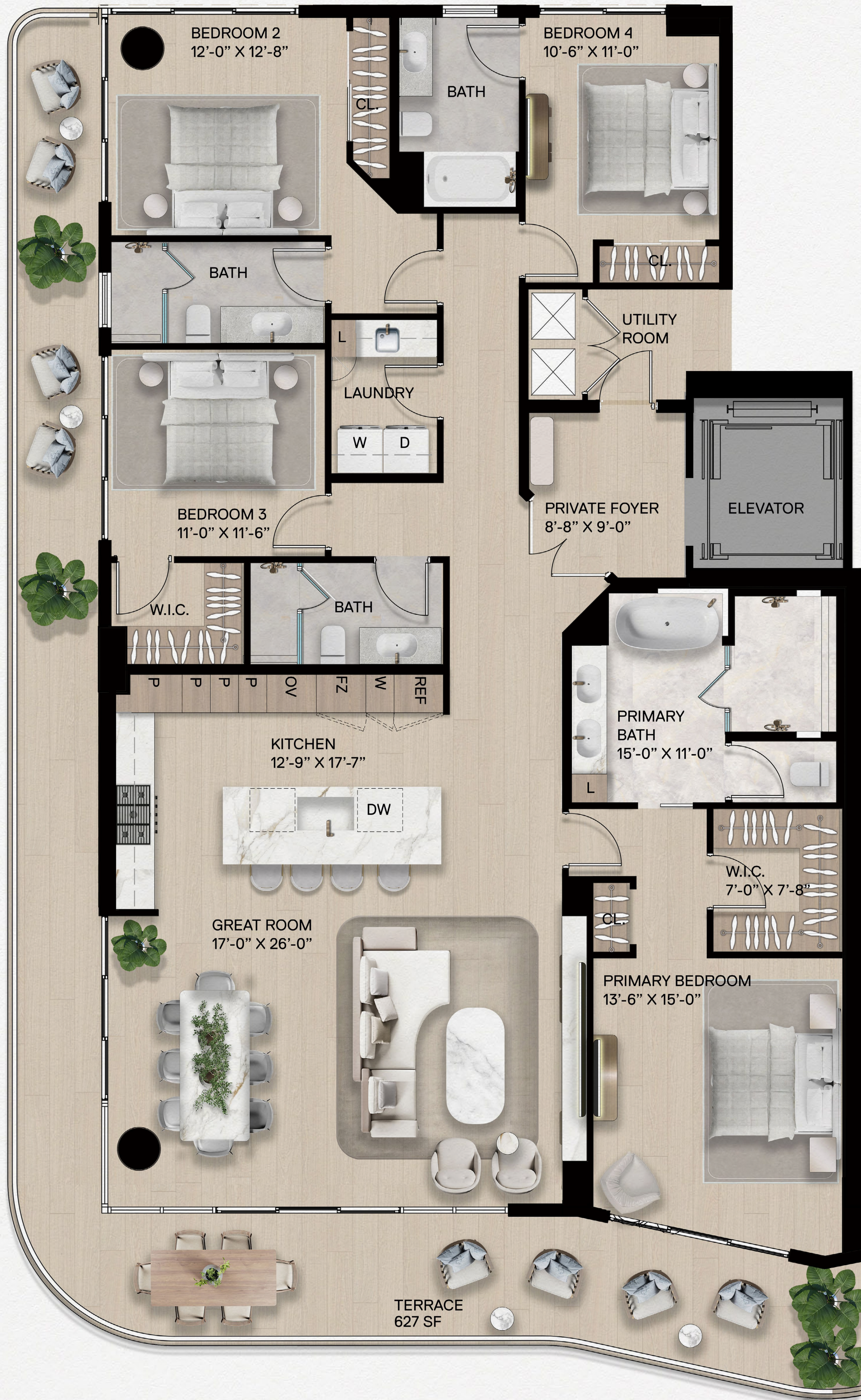
4 Bedrooms | 4 Bathrooms

Interior: 2,502 SF | Terrace: 627 SF

NEW RIVER VIEWS



E  
OCEAN VIEWS



The dimensions stated for this unit floor plan are approximate because there are various recognized methods for calculating the square footage of a unit. The square footage stated here is calculated from the exterior boundaries of the exterior walls to the centerline of interior demising walls without deductions for cutouts, curves, or architectural features. This method typically results in quoted dimensions greater than the dimensions that would be determined by using other accepted methods. The definition of "Unit" and the calculation method to be relied upon is set forth by the Developer, RD 3B LLC, in Developer's prospectus; the method set forth in the Developer's prospectus may result in a square footage calculation less than the method used here. Consult the Developer's prospectus for information on what is offered with the Unit and the calculation of the Unit square footage and dimensions.



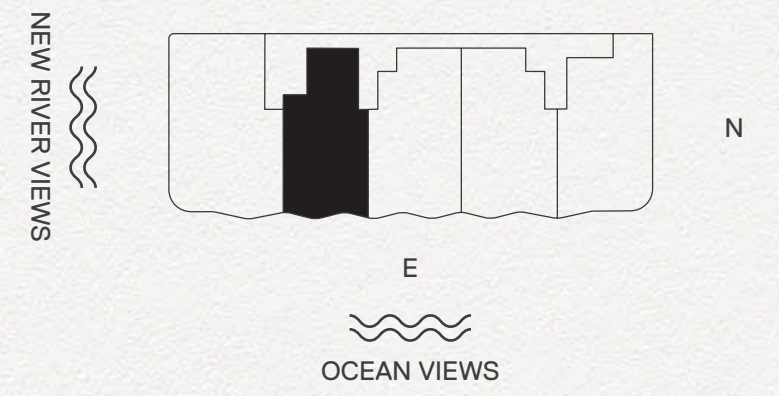
## RESIDENCE 02A



# RESIDENCE 02A

2 Bedrooms | 2.5 Bathrooms

Interior: 1,812 SF | Terrace: 247 SF



The dimensions stated for this unit floor plan are approximate because there are various recognized methods for calculating the square footage of a unit. The square footage stated here is calculated from the exterior boundaries of the exterior walls to the centerline of interior demising walls without deductions for cutouts, curves, or architectural features. This method typically results in quoted dimensions greater than the dimensions that would be determined by using other accepted methods. The definition of "Unit" and the calculation method to be relied upon is set forth by the Developer, RD 3B LLC, in Developer's prospectus; the method set forth in the Developer's prospectus may result in a square footage calculation less than the method used here. Consult the Developer's prospectus for information on what is offered with the Unit and the calculation of the Unit square footage and dimensions.

