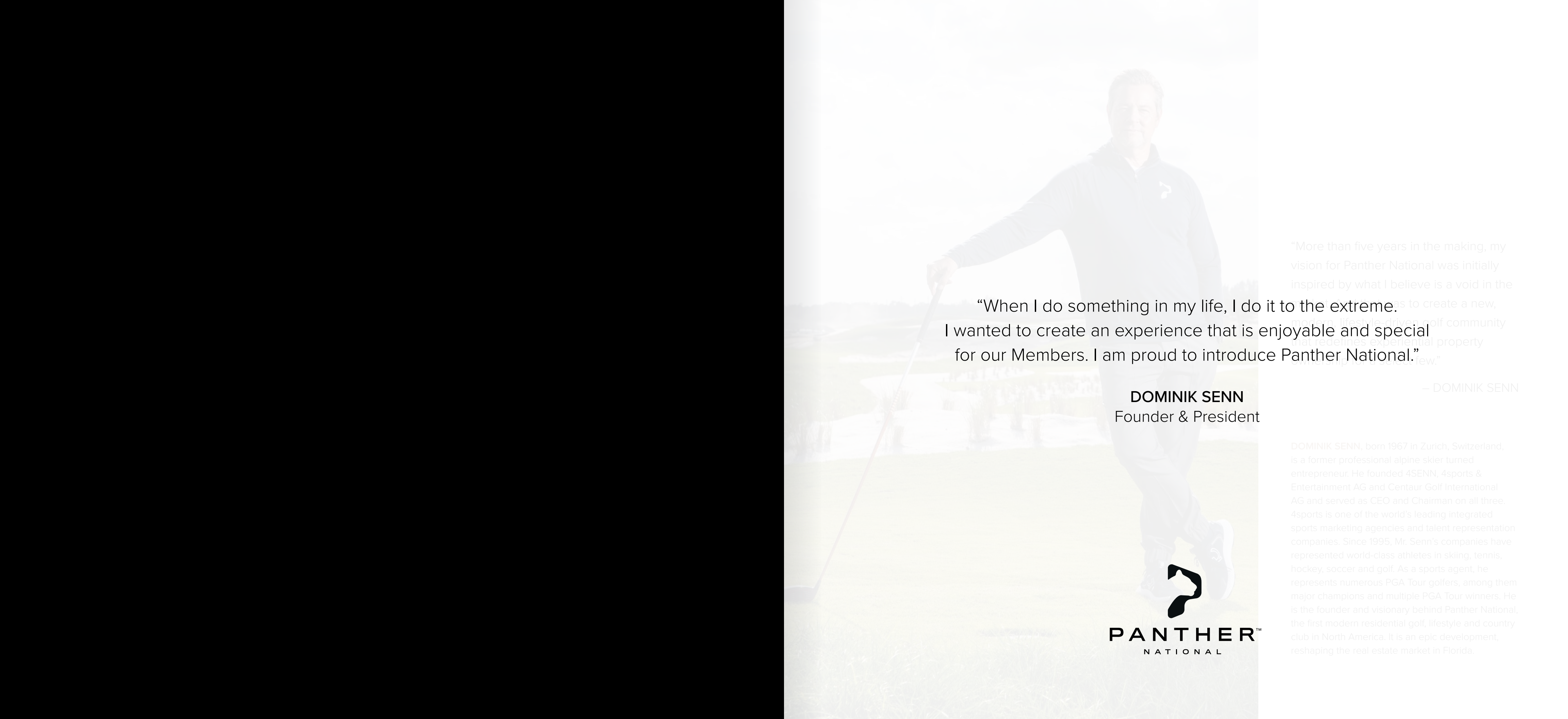




PANTHER[™]
NATIONAL



“When I do something in my life, I do it to the extreme. I wanted to create an experience that is enjoyable and special for our Members. I am proud to introduce Panther National.”

DOMINIK SENN
Founder & President



“More than five years in the making, my vision for Panther National was initially inspired by what I believe is a void in the market. I wanted to create a new, modern, lifestyle-driven golf community that redefines experiential property for the few.”

— DOMINIK SENN

DOMINIK SENN, born 1967 in Zurich, Switzerland, is a former professional alpine skier turned entrepreneur. He founded 4SENN, 4sports & Entertainment AG and Centaur Golf International AG and served as CEO and Chairman on all three. 4sports is one of the world’s leading integrated sports marketing agencies and talent representation companies. Since 1995, Mr. Senn’s companies have represented world-class athletes in skiing, tennis, hockey, soccer and golf. As a sports agent, he represents numerous PGA Tour golfers, among them major champions and multiple PGA Tour winners. He is the founder and visionary behind Panther National, the first modern residential golf, lifestyle and country club in North America. It is an epic development, reshaping the real estate market in Florida.



“More than five years in the making, my vision for Panther National was initially inspired by what I believe is a void in the market. And that was to create a new, modern, lifestyle-driven golf community that redefines experiential property ownership for a select few.”

– DOMINIK SENN

DOMINIK SENN, born 1967 in Zurich, Switzerland, is a former professional alpine skier turned entrepreneur. He founded 4SENN, 4sports & Entertainment AG and Centaur Golf International AG and served as CEO and Chairman on all three. 4sports is one of the world’s leading integrated sports marketing agencies and talent representation companies. Since 1995, Mr. Senn’s companies have represented world-class athletes in skiing, tennis, hockey, soccer and golf. As a sports agent, he represents numerous PGA Tour golfers, among them major champions and multiple PGA Tour winners. He is the founder and visionary behind Panther National, the first modern residential golf, lifestyle and country club in North America. It is an epic development, reshaping the real estate market in Florida.

THE CLUBHOUSE



DISCOVER A LIFESTYLE OF
ENERGY AND EFFORTLESS ELEGANCE.

Panther National represents a vision for a new generation of luxury and sophistication in private club communities. Centered around an extraordinary 18-hole championship golf course designed by golf legends Jack Nicklaus and Justin Thomas, Panther National is a 400-acre gated community in Palm Beach Gardens, Florida, encompassing approximately

218 Signature and Custom Estates Homes in exclusive enclaves, bordered by a 2,400-acre protected conservation area. The community's contemporary architecture has been designed by renowned architect Max Strang. The facilities, resort-style amenities and personal services will exemplify or rival the finest private clubs in the U.S. and Europe.

“YOU WON’T FIND ANY GOLF COURSE THAT’S EVEN
REMOVED CLOSE TO IT IN ALL OF FLORIDA.”

Jack Nicklaus
— JACK NICKLAUS
Course Designer



JACK NICKLAUS & JUSTIN THOMAS
Course Designers

A CELEBRATED PAIRING.

Two generations of golfers – Jack Nicklaus and Justin Thomas – have combined their talents to create the Signature 18-hole championship course at Panther National. Jack Nicklaus is widely considered the greatest golfer of all time and one of the finest course designers in the world. During his playing career from 1962 to 2005, he won 117 professional tournaments, including a record-breaking 18 major championships. He has designed more than 300 golf courses, showcasing his expertise in course design and architecture around the globe. Justin Thomas is a premier professional golfer who stars on the PGA Tour. Since 2015, he has achieved at least one PGA tournament victory each year, including two PGA Championships in 2017 and again in 2022. Panther National is their first joint collaboration.

“IT IS A SURREAL MOMENT FOR ME TO
BE CO-DESIGNING MY FIRST COURSE
WITH JACK NICKLAUS.”

Justin Thomas
— JUSTIN THOMAS



A CHAMPIONSHIP COURSE
IN A CLASS OF ITS OWN.

The championship golf course at Panther National offers challenging elevations and features unlike any in the State of Florida. According to Dominik Senn, Founder and President of Panther National, "Nobody does a better job than Jack Nicklaus of creating a golf experience that can challenge the top touring professionals in the world, while offering an enjoyable experience for Members and guests of all ages and skill levels." Panther National is positioned to lead Palm Beach County and Florida in environmentally sensitive planning and construction, amenities geared to a 21st Century requirement for wellness, personal renewal and a genuine love of the game of golf.

18-HOLE CHAMPIONSHIP GOLF COURSE





PHOTO BY JIM MANDEVILLE/NICKLAUS DESIGN

PAR-3 SHORT COURSE & PANTHER PUTTING COURSE.



In addition to the splendid core-designed championship course, Panther National offers a beautiful and challenging nine-hole Par-3 Short Course with holes varying from 60 to 200 yards. The course features approach shots that you will find on the championship course, and even includes an island green much like the famous 17th hole at TPC Sawgrass. Our nearly one-acre putting course is the perfect spot to gather pre- or post-round to settle bets, have a little fun with family and friends or hone your putting skills. You will experience every putt you could conceivably encounter on the championship course.

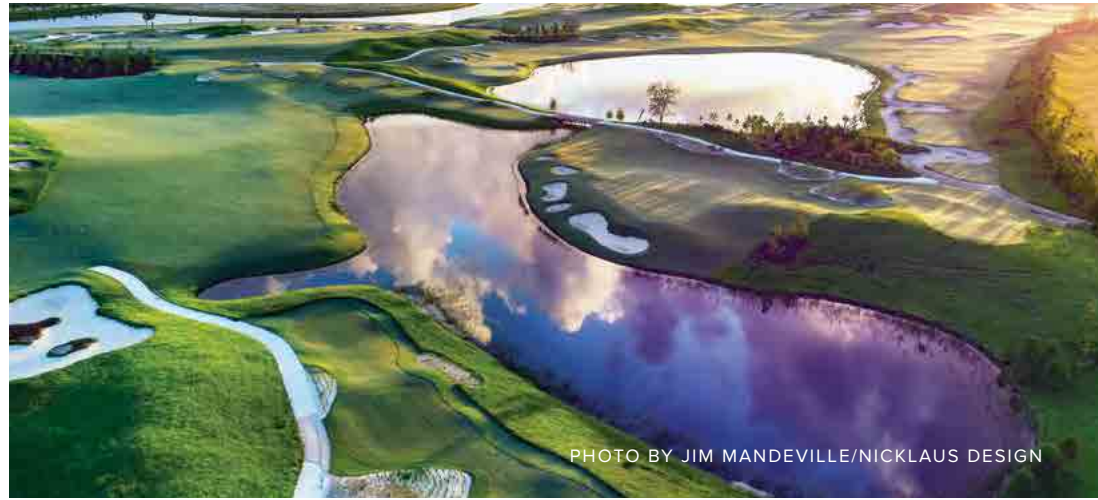


PHOTO BY JIM MANDEVILLE/NICKLAUS DESIGN

PANTHER NATIONAL EXPERIENCE.

PERFORMANCE TRAINING CENTER The Panther National tour-quality training facility provides fully air-conditioned bays for year-round training, as well as state-of-the-art flight tracing technology for instant and reliable swing feedback. It provides tailored instruction from elite pros, an indoor simulator, putting room and high-end fitness training equipment.

PRACTICE AREA Panther's practice facilities are world class. The long game practice facility features multiple targets with Trinity Zoysia grass. This special turf will clearly identify the target greens and allow for the ball to react as it would when landing on a putting surface. The target greens from the member side tee are equal in size to a PGA tour average shot for the distance. Target greens from the training side tee are equal in size to the best in the world for the distance. Another incredibly unique feature is the US Open width fairway for driving practice. Making practice "harder than the game" will assist golfers to increase skill faster, making on course play easier.

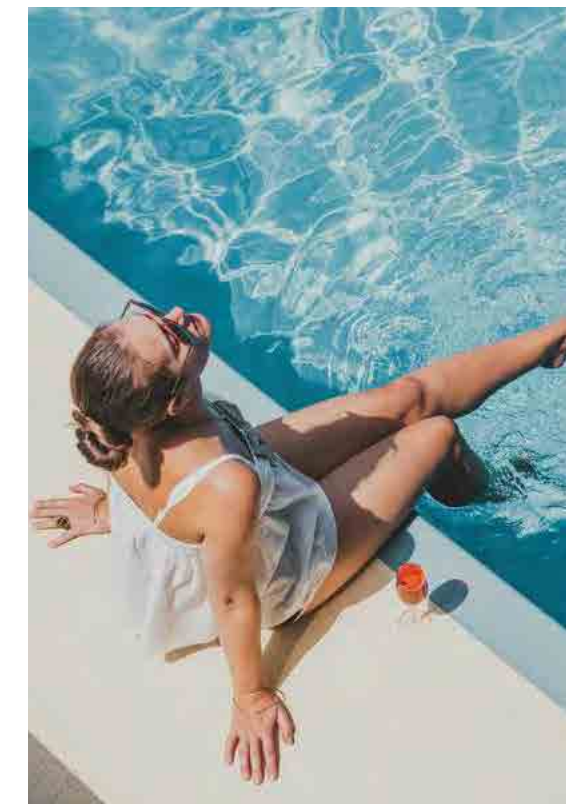
SHORT GAME PRACTICE AREA The short game training area offers a specially shaped green and bunkers which permit members to perfect their wedge play and all the greenside shots needed for Panther's championship course and all other top venues around the world.



PHOTO BY JIM MANDEVILLE/NICKLAUS DESIGN

"PANTHER NATIONAL IS A WORLD AND A WAY OF LIFE
TAILORED TO THOSE WHO EXPECT THE BEST."

— DOMINIK SENN
Founder & President



A WORLD OF AMENITIES.

The Panther National Clubhouse and Lifestyle Club embody the essence of luxury and leisure, enhancing a memorable experience for Members.

THE CLUBHOUSE is an architectural masterpiece by Max Strang. You will encounter Michelin-inspired cuisine with a captivating European influence. From the restaurant with a show kitchen to the Wine Cellar and curated menus, we offer a culinary journey beyond your imagination. Discover a haven of luxurious amenities, highlighted by fine dining venues, a courtyard with fire pits, an event lawn, state-of-the-art fitness center, superb locker rooms and lounges and concierge service. The perfect place to immerse yourself in luxury and comfort.

THE LIFESTYLE CLUB is dedicated to improving residents' quality of life, providing a wide range of exclusive amenities and services for the entire family. Whether you seek state-of-the-art fitness facilities, weight training and cardio equipment or desire rejuvenating spa treatments, our Lifestyle Club serves as a sanctuary for relaxation and well-being. Indulge in gourmet dining experiences, socialize in sophisticated lounges or partake of recreational activities such as tennis, pickleball and swimming in resort-style pools.

A photograph of a modern, curved building with large glass windows, overlooking a swimming pool. The pool area is furnished with lounge chairs and umbrellas, and there are palm trees in the background. The image is overlaid with a semi-transparent brown banner on the left side.

REDEFINED LUXURY PROPERTY OWNERSHIP
FOR A SELECT FEW.





AN EXPERIENTIAL ENCLAVE
TAILORED FOR YOU.

A new hub of uncommon luxury, Panther National's modern estates provide effortless access to championship golf, resort-style amenities and customized service to fit your entire family – all surrounded by the glamour & sophistication of Palm Beach County.

Panther National estates, divided into one-third, one-half and one-acre sites, feature multiple floor plans in elegant one- and two-story contemporary homes. Ranging from 4,200 to more than 15,000 square feet and from three to six bedrooms, these indoor-outdoor friendly residences offer a world of amenities and features – everything from porcelain tile first floors and wood floors in bedrooms, kitchens with Wolf and Sub-Zero appliances, custom cabinetry, custom outdoor kitchens with solid surface countertops, private swimming pools and outdoor showers, premium landscaping with irrigation, architect-selected exterior colors, fire sprinkler systems, two-to-four-car garages with golf cart parking electric charging units and much, much more.





MAX STRANG
Founder & Director of Strang Design

[STRANG] DESIGN.

Strang Design develops the blueprints for both the Signature Estate Homes and the main buildings of the Golf Club – the Entry Gates, Clubhouse and Lifestyle Club. Each design reflects the essence of luxury and leisure.

The company is renowned for its vision and environmental modernism – a holistic integration of modern architecture, interior design and landscaping combined with environmentally friendly construction, green technologies and natural materials. Max Strang is the founder and director of Miami-based Strang Design. Environmental modernism is their ethos, reflecting a commitment to environmental stewardship and respect for the evolution of modern design.

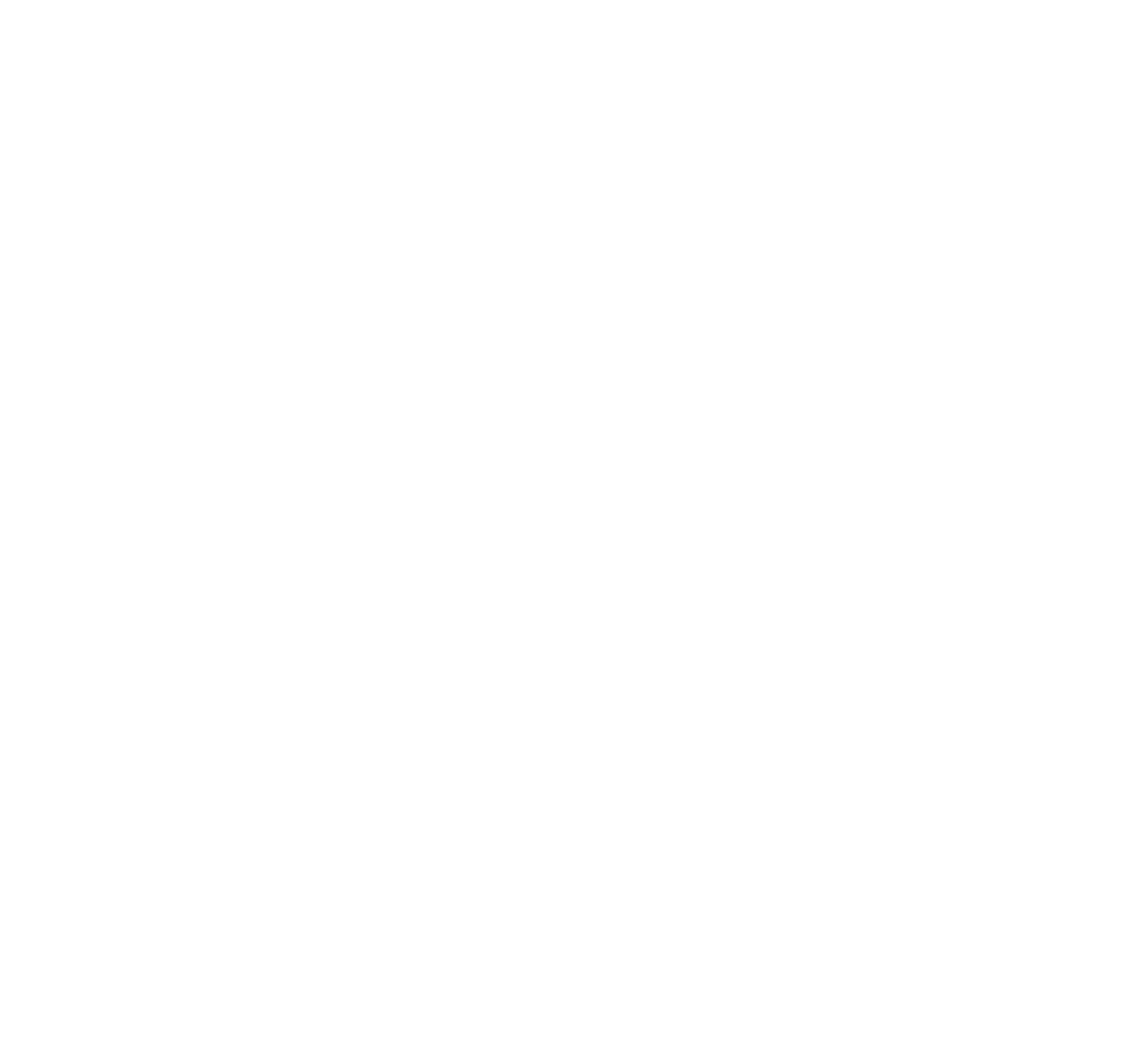
In 2022, Max Strang and his firm earned “Firm of the Year” and “Architect of the Year” from the Miami Chapter of the American Institute of Architects.

His work is featured in Architectural Digest, The New York Times and Wallpaper, among other publications.

TURN-KEY DESIGN

SIGNATURE ESTATE HOMES

Designed by celebrated architect Max Strang, the Signature Estate Homes are distinctive one and two story luxury residences, built by WillStrong Construction, ranging from 4,200-10,000 square feet. All Signature Homes offer three-to-five bedrooms, two-to-four car garages, private swimming pools and outdoor kitchens.



SIGNATURE ESTATE HOME
VERBIER



SIGNATURE ESTATE HOME
GSTAAD





SIGNATURE ESTATES INCLUDED FEATURES.

INTERIOR

- Wolf kitchen appliances
- Sub-Zero refrigeration
- Electrolux laundry appliances
- Solid surface countertops
- Custom cabinetry with soft-close drawers
- 24" x 48" Porcelain tile in first floor main areas and bathrooms
- Engineered wood floors in bedrooms and closets
- Lutron lighting controls
- Waterworks faucets & fixtures, Kohler sinks & water closets
- Drapery pockets
- Wine display with glass enclosure
- Fire sprinkler system
- Recessed 4" square LED lighting
- Security system
- EV charger in garage
- High efficiency 2 stage A/C with smart thermostat

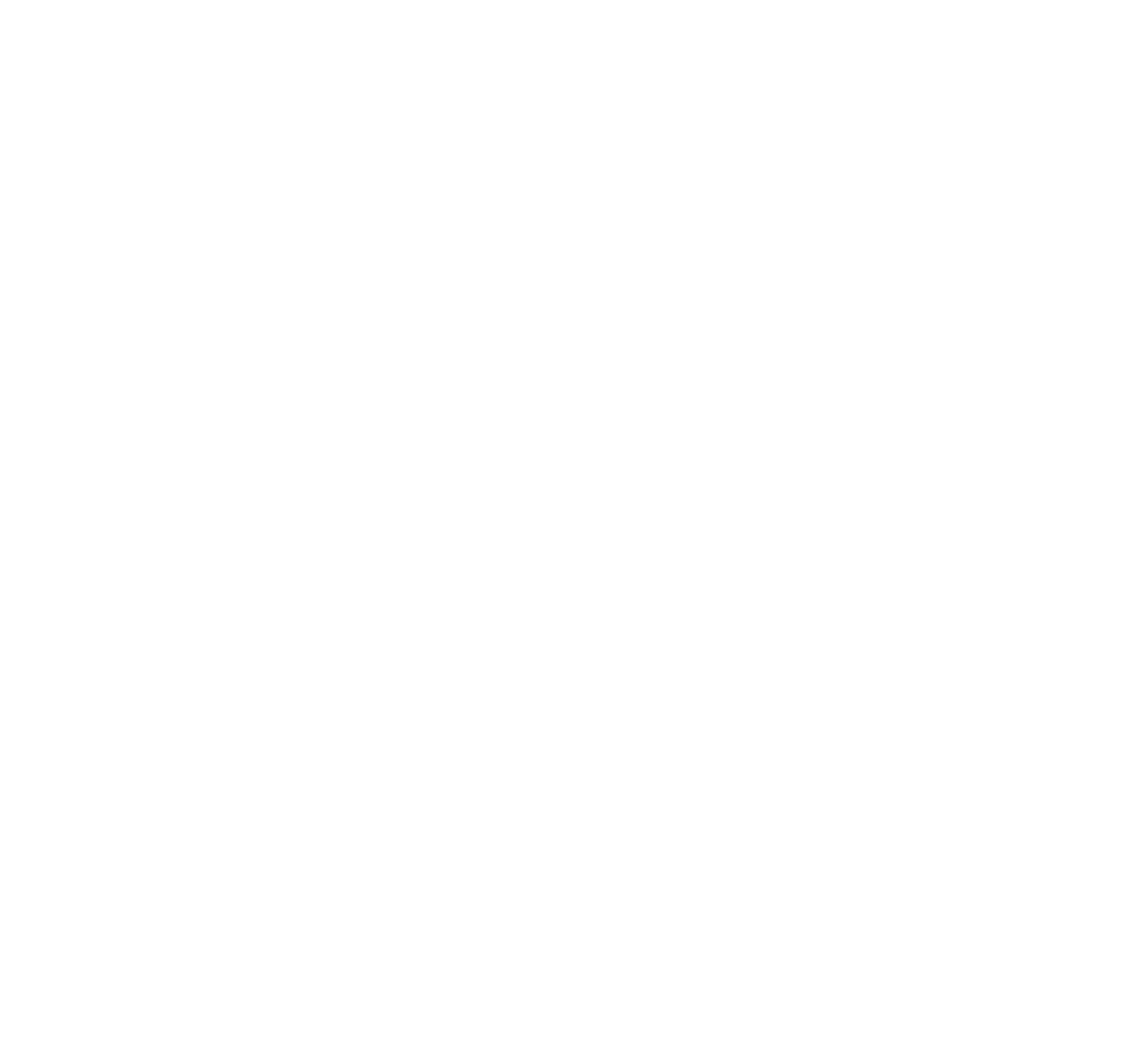
EXTERIOR

- Architect selected exterior color combinations
- Oversized 10' entry door with clear glass, with transom glass above and sidelight
- 14' x 36' rectangular pool
- ES Prestige Series, Low E, impact rated windows and doors, bronze aluminum frames
- Expansive 3 to 4-car garages per plan
- Steel garage door, insulated, impact rated with opener and keyless entry
- Premium landscape package with irrigation system
- Smooth painted stucco, smooth Turkish stone and porcelain wood look tile with powder coated aluminum vertical fins
- Cold applied roofing membrane, includes integrated roof drain system with overflow scuppers
- Custom outdoor kitchen with solid surface countertop
- Underground side yard drainage system
- Shellstone paver driveway, entry walk and pool deck
- Outdoor shower

CREATE YOUR VISION

CUSTOM ESTATE HOMES

Crafted from start to finish to suit your specifications. 21 premier home-sites are available for fully custom estates – nine one-acre sites with golf course views and twelve half-acre sites with views of the nature preserve. Homes will range from 7,000 to more than 15,000 square feet. The Custom Home process allows you to collaborate with the architect and preferred Panther National builder – either Willoughby Construction and Development, Elish Builders or another approved builder – to shape your personal masterpiece.



CUSTOM ESTATE HOME
BELLINZONA



CUSTOM ESTATE HOME
MUIRFIELD



 ELLISH BUILDERS

CUSTOM ESTATE HOME
ASCONA



BUILDING YOUR LEGACY WITH OUR PREFERRED BUILDER PROGRAM

Panther National's Preferred Builder Program ensures the standards and integrity that are the hallmarks of our community. With these carefully vetted builders, Panther National's Custom Estate Homes will seamlessly complement the design of our Signature Estate Homes. The Preferred Builders have been embraced for their characteristic spirit of our community, as well as their demonstrated professional record of delivering luxurious residences of the highest quality.



Willoughby Construction. South Florida luxury home builder Willoughby Construction joins Panther National as a Preferred Builder of our Custom Estate Homes. Founder Craig Willoughby has more than 40 years of experience delivering remarkable homes with family values and sustainable practices that align with those of Panther National. Based in Jupiter, Willoughby is distinguished for its luxury home estates in singular venues throughout Palm Beach County.



Elish Builders. A trusted name in the custom homebuilding industry since 1936, Elish Builders has been selected as a Preferred Builder of the Custom Estate Homes at Panther National. Now in its fourth generation led by the father-son visionary team of Ron and Matt Elish, Elish Builders is collaborating with esteemed architectural and design firms to craft exquisite homes of enduring value on the premier half-acre and one-acre custom homesites at Panther National. Elish Builders' unwavering dedication to impeccable service and superior craftsmanship has made it one of South Florida's leading custom homebuilders.



PRESTWICK – ELLISH BUILDERS | BRENNER ARCHITECTURE GROUP



LUGANO – [STRANG] DESIGN

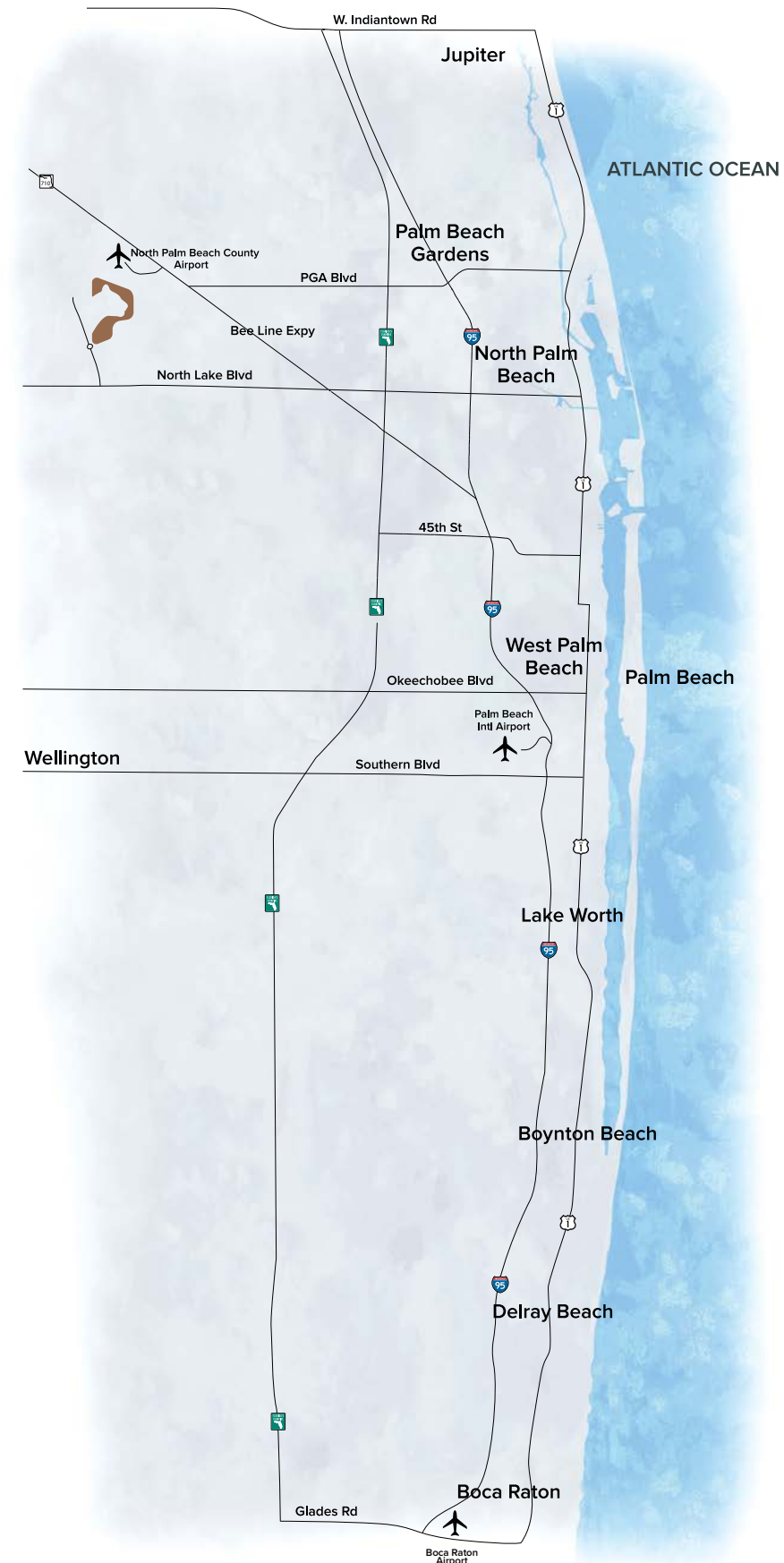
2,400-ACRE NATURE PRESERVE.

The preserve is a breathtaking sanctuary. A network of nature trails providing scenic enjoyment for nature enthusiasts and trail exercise alike. With each step, the trails reveal lush flora and fauna and picturesque views. Whether you enjoy hiking, cycling, running, or simply the tranquility of nature – Panther National offers direct access to this remarkable landscape.

OVER 2,400 ACRES OF
CONSERVATION AREA

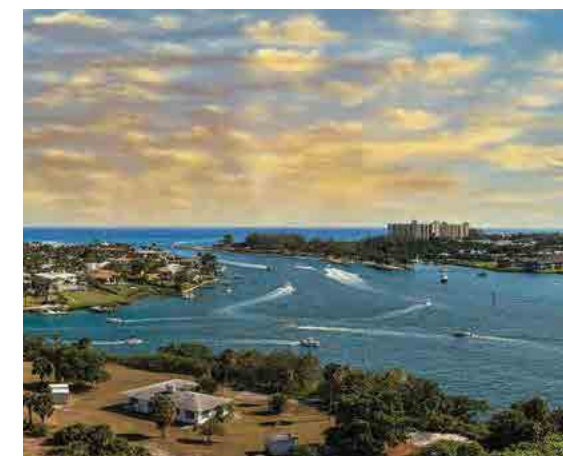
---- WALKING TRAILS






A WORLD OF ITS OWN, IN PALM BEACH COUNTY.

Panther National, nestled in North Palm Beach County, offers an exclusive lifestyle for the discerning few. With a perfect balance of tranquility and entertainment, this gated community is a mere 20-minute drive from Palm Beach. Adjacent to Panther National, you'll find 2,400 acres of pristine nature preserve and Avenir, a 4,752-acre development featuring a vibrant town center with retail, dining, offices, and more. Convenience is paramount, with proximity to hospitals, shopping, top-rated schools, and the sparkling Atlantic Ocean. Panther National is the ideal choice for those seeking a pivotal home base and a haven of privacy.





 ALL PURCHASERS ACKNOWLEDGE THAT THEY HAVE NOT RELIED ON ANY VERBAL REPRESENTATIONS AND THAT THE ONLY REPRESENTATIONS MADE BY SELLER ARE SET FORTH IN THE APPLICABLE PURCHASE AGREEMENT.

ALL DIMENSIONS, FEATURES, AND SPECIFICATIONS ARE APPROXIMATE AND SUBJECT TO CHANGE WITHOUT NOTICE. All images and designs depicted herein are artist's conceptual renderings, which are based upon preliminary development plans, and are subject to change without notice. All such materials are not to scale and are shown solely for illustrative purposes. Renderings depict proposed views, which are not identical from each lot or home. No guarantees or representations whatsoever are made that existing or future views of the project and surrounding areas depicted by artist's conceptual renderings or otherwise described herein, will be provided or, if provided, will be as depicted herein or that such views will not be obstructed in the future.

VERSION 1 - OCT 2023



