

BAYFRONT RESIDENCE

RESIDENCE AA
NORTH
FLOORS 03-07

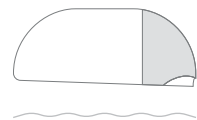
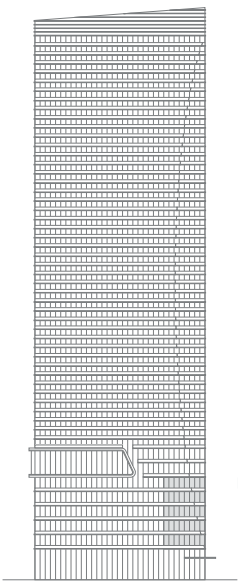
3 BEDROOMS
3 BATHROOMS
1 POWDER ROOM

INTERIOR AREA:
3,124 SQ FT / 290.22 SQ M

EXTERIOR AREA:
628-681 SQ FT / 58.34-63.27 SQ M

TOTAL AREA:
3,590-3,805 SQ FT / 333.52-353.5 SQ M

EDITION[®]
RESIDENCES
MIAMI EDGEWATER



NORTH ►

BISCAYNE BAY

*Floor plan not to scale.



The EDITION Residences Miami Edgewater are not owned, developed or sold by Marriott International, Inc. or its affiliates ("Marriott"). Two Roads Development LLC uses the EDITION marks under a license from Marriott, which has not confirmed the accuracy of any of the statements or representations made herein. ORAL REPRESENTATIONS CANNOT BE RELIED UPON AS CORRECTLY STATING THE REPRESENTATIONS OF THE DEVELOPER. FOR CORRECT REPRESENTATIONS, MAKE REFERENCE TO THIS BROCHURE AND TO THE DOCUMENTS REQUIRED BY SECTION 718.503, FLORIDA STATUTES, TO BE FURNISHED BY A DEVELOPER TO A BUYER OR LESSEE. All artist's or architectural renderings, sketches, graphic materials and photos depicted or otherwise described herein are proposed and conceptual only, and are based upon preliminary development plans, which are subject to change. The final shape, design, and square footage of Buyer's Unit are subject to constructed measurements. All dimensions are approximate and subject to construction variances and differing measuring techniques. Plans and dimensions for similar units may contain minor variations from floor to floor. All floor plans and floor plan elements such as: room sizes, casework, other fixtures and furniture are not drawn to scale, may not be included in every unit with that floor plan and are shown for illustrative purposes only. Seller reserves the right to make changes and modifications to plans, materials, specifications, features and delivery of home without notice or obligation. The balconies depicted show the approximate areas for the minimum and maximum balcony sizes within a floor plan line and will vary per level. Consult with your sales representative for exact dimensions. These materials are not intended to be an offer to sell, or solicitation to buy a unit in the condominium. Such an offering shall only be made pursuant to the prospectus (offering circular) for the condominium and no statements should be relied upon unless made in the prospectus or in the applicable purchase agreement. In no event shall any solicitation, offer or sale of a unit in the condominium be made in, or to residents of, any state or country in which such activity would be unlawful. Branding & Creative by kevo.



TWO ROADS
DEVELOPMENT

BAYFRONT RESIDENCE

EDITION[®]
RESIDENCES
MIAMI EDGEWATER

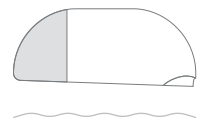
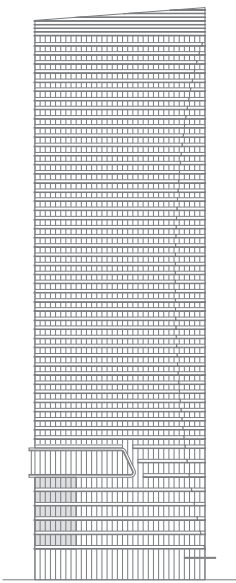
RESIDENCE AA
SOUTH
FLOORS 03-07

3 BEDROOMS
3 BATHROOMS
1 POWDER ROOM

INTERIOR AREA:
3,124 SQ FT / 290.23 SQ M

EXTERIOR AREA:
397 SQ FT / 36.88 SQ M

TOTAL AREA:
3,521 SQ FT / 327.11 SQ M



NORTH ►

BISCAYNE BAY

*Floor plan not to scale.

The EDITION Residences Miami Edgewater are not owned, developed or sold by Marriott International, Inc. or its affiliates ("Marriott"). Two Roads Development LLC uses the EDITION marks under a license from Marriott, which has not confirmed the accuracy of any of the statements or representations made herein. ORAL REPRESENTATIONS CANNOT BE RELIED UPON AS CORRECTLY STATING THE REPRESENTATIONS OF THE DEVELOPER. FOR CORRECT REPRESENTATIONS, MAKE REFERENCE TO THIS BROCHURE AND TO THE DOCUMENTS REQUIRED BY SECTION 718.503, FLORIDA STATUTES, TO BE FURNISHED BY A DEVELOPER TO A BUYER OR LESSEE. All artist's or architectural renderings, sketches, graphic materials and photos depicted or otherwise described herein are proposed and conceptual only, and are based upon preliminary development plans, which are subject to change. The final shape, design, and square footage of Buyer's Unit are subject to constructed measurements. All dimensions are approximate and subject to construction variances and differing measuring techniques. Plans and dimensions for similar units may contain minor variations from floor to floor. All floor plans and floor plan elements such as: room sizes, casework, other fixtures and furniture are not drawn to scale, may not be included in every unit with that floor plan and are shown for illustrative purposes only. Seller reserves the right to make changes and modifications to plans, materials, specifications, features and delivery of home without notice or obligation. The balconies depicted show the approximate areas for the minimum and maximum balcony sizes within a floor plan line and will vary per level. Consult with your sales representative for exact dimensions. These materials are not intended to be an offer to sell, or solicitation to buy a unit in the condominium. Such an offering shall only be made pursuant to the prospectus (offering circular) for the condominium and no statements should be relied upon unless made in the prospectus or in the applicable purchase agreement. In no event shall any solicitation, offer or sale of a unit in the condominium be made in, or to residents of, any state or country in which such activity would be unlawful. Branding & Creative by kevo.



BAYFRONT RESIDENCE

EDITION
RESIDENCES
MIAMI EDGEWATER

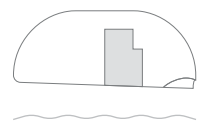
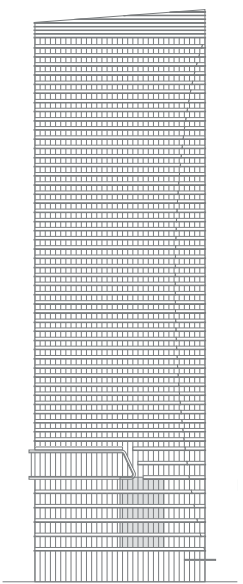
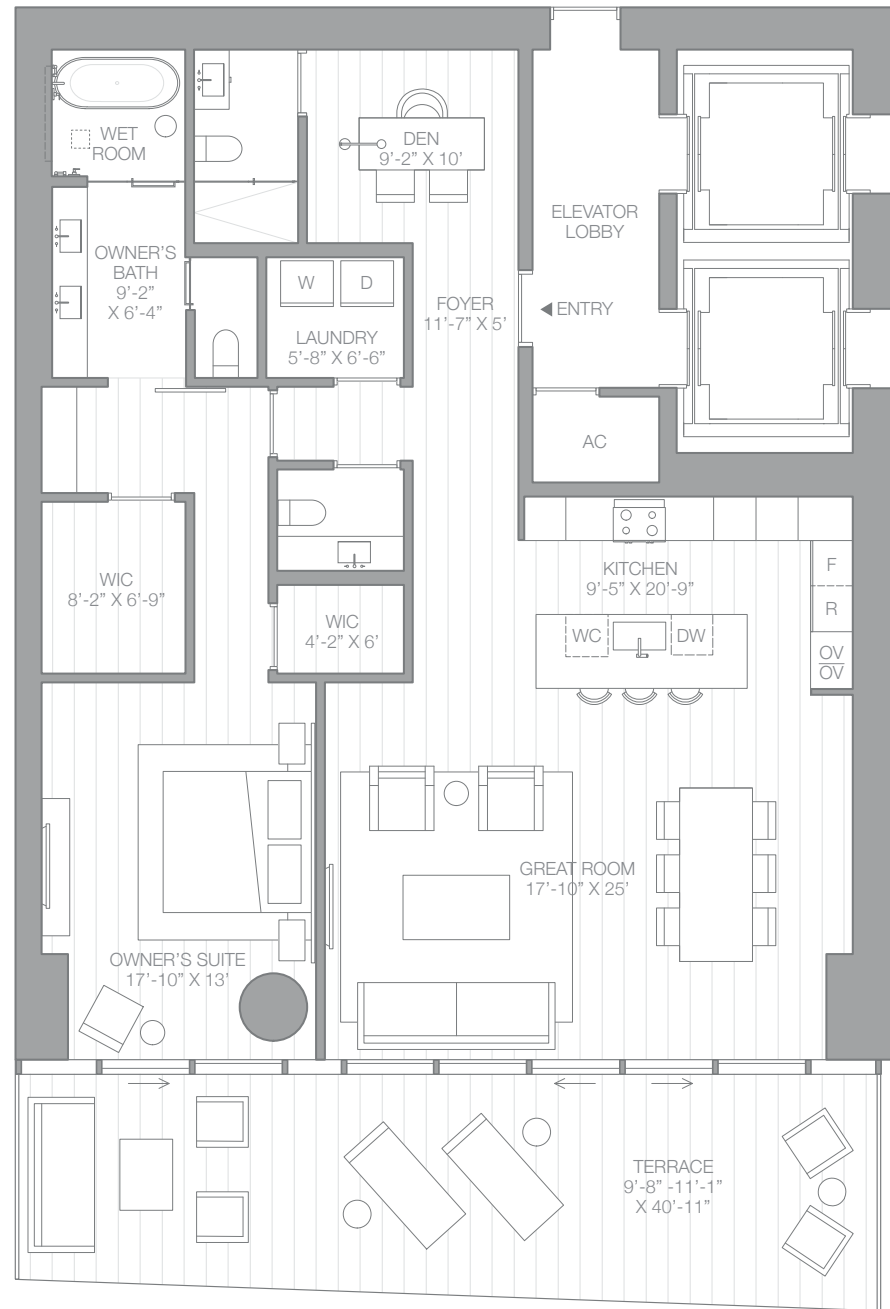
RESIDENCE B1
EAST-NORTH
FLOORS 03-07

1 BEDROOM + DEN
2 BATHROOM
1 POWDER ROOM

INTERIOR AREA:
1,952 SQ FT / 181.35 SQ M

EXTERIOR AREA:
425 SQ FT / 39.5 SQ M

TOTAL AREA:
2,377 SQ FT / 220.83 SQ M



NORTH ►

BISCAYNE BAY

*Floor plan not to scale.



The EDITION Residences Miami Edgewater are not owned, developed or sold by Marriott International, Inc. or its affiliates ("Marriott"). Two Roads Development LLC uses the EDITION marks under a license from Marriott, which has not confirmed the accuracy of any of the statements or representations made herein. ORAL REPRESENTATIONS CANNOT BE RELIED UPON AS CORRECTLY STATING THE REPRESENTATIONS OF THE DEVELOPER. FOR CORRECT REPRESENTATIONS, MAKE REFERENCE TO THIS BROCHURE AND TO THE DOCUMENTS REQUIRED BY SECTION 718.503, FLORIDA STATUTES, TO BE FURNISHED BY A DEVELOPER TO A BUYER OR LESSEE. All artist's or architectural renderings, sketches, graphic materials and photos depicted or otherwise described herein are proposed and conceptual only, and are based upon preliminary development plans, which are subject to change. The final shape, design, and square footage of Buyer's Unit are subject to constructed measurements. All dimensions are approximate and subject to construction variances and differing measuring techniques. Plans and dimensions for similar units may contain minor variations from floor to floor. All floor plans and floor plan elements such as: room sizes, casework, other fixtures and furniture are not drawn to scale, may not be included in every unit with that floor plan and are shown for illustrative purposes only. Seller reserves the right to make changes and modifications to plans, materials, specifications, features and delivery of home without notice or obligation. The balconies depicted show the approximate areas for the minimum and maximum balcony sizes within a floor plan line and will vary per level. Consult with your sales representative for exact dimensions. These materials are not intended to be an offer to sell, or solicitation to buy a unit in the condominium. Such an offering shall only be made pursuant to the prospectus (offering circular) for the condominium and no statements should be relied upon unless made in the prospectus or in the applicable purchase agreement. In no event shall any solicitation, offer or sale of a unit in the condominium be made in, or to residents of, any state or country in which such activity would be unlawful. Branding & Creative by kevo.



BAYFRONT RESIDENCE

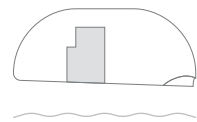
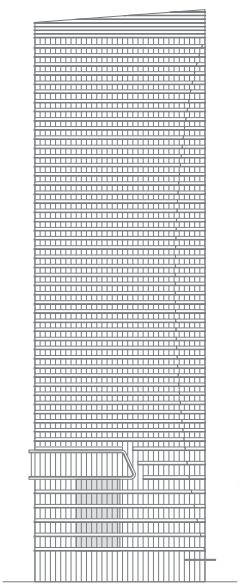
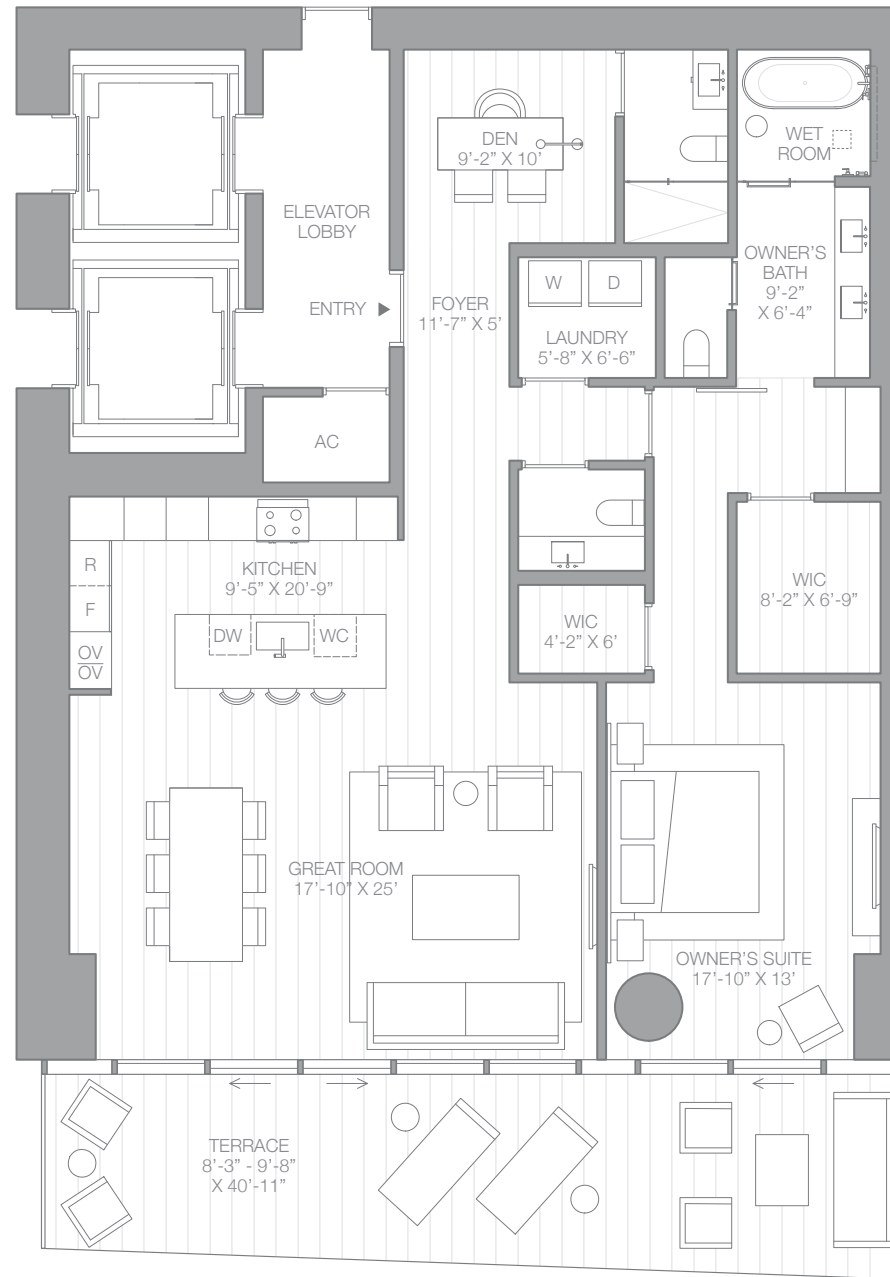
RESIDENCE B1
EAST-SOUTH
FLOORS 03-07

1 BEDROOM + DEN
2 BATHROOM
1 POWDER ROOM

INTERIOR AREA:
1,952 SQ FT / 181.35 SQ M

EXTERIOR AREA:
367 SQ FT / 34.10 SQ M

TOTAL AREA:
2,319 SQ FT / 215.44 SQ M



NORTH ►

BISCAYNE BAY

*Floor plan not to scale.



The EDITION Residences Miami Edgewater are not owned, developed or sold by Marriott International, Inc. or its affiliates ("Marriott"). Two Roads Development LLC uses the EDITION marks under a license from Marriott, which has not confirmed the accuracy of any of the statements or representations made herein. ORAL REPRESENTATIONS CANNOT BE RELIED UPON AS CORRECTLY STATING THE REPRESENTATIONS OF THE DEVELOPER. FOR CORRECT REPRESENTATIONS, MAKE REFERENCE TO THIS BROCHURE AND TO THE DOCUMENTS REQUIRED BY SECTION 718.503, FLORIDA STATUTES, TO BE FURNISHED BY A DEVELOPER TO A BUYER OR LESSEE. All artist's or architectural renderings, sketches, graphic materials and photos depicted or otherwise described herein are proposed and conceptual only, and are based upon preliminary development plans, which are subject to change. The final shape, design, and square footage of Buyer's Unit are subject to construction measurements. All dimensions are approximate and subject to construction variances and differing measuring techniques. Plans and dimensions for similar units may contain minor variations from floor to floor. All floor plans and floor plan elements such as: room sizes, casework, other fixtures and furniture are not drawn to scale, may not be included in every unit with that floor plan and are shown for illustrative purposes only. Seller reserves the right to make changes and modifications to plans, materials, specifications, features and delivery of home without notice or obligation. The balconies depicted show the approximate areas for the minimum and maximum balcony sizes within a floor plan line and will vary per level. Consult with your sales representative for exact dimensions. These materials are not intended to be an offer to sell, or solicitation to buy a unit in the condominium. Such an offering shall only be made pursuant to the prospectus (offering circular) for the condominium and no statements should be relied upon unless made in the prospectus or in the applicable purchase agreement. In no event shall any solicitation, offer or sale of a unit in the condominium be made in, or to residents of, any state or country in which such activity would be unlawful. Branding & Creative by kevo.



SIGNATURE RESIDENCE

RESIDENCE A
NORTH
FLOORS 10-40

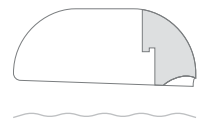
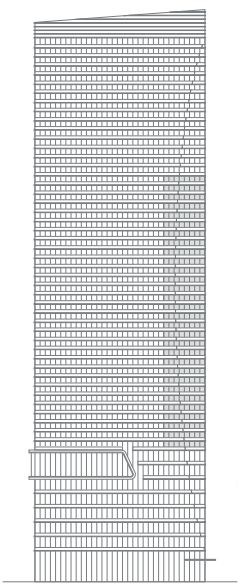
3 BEDROOMS
3 BATHROOMS
1 POWDER ROOM

INTERIOR AREA:
2,745 SQ FT / 255.02 SQ M

EXTERIOR AREA:
301-407 SQ FT / 27.96-37.81 SQ M

TOTAL AREA:
3,046-3,152 SQ FT / 282.98-292.83 SQ M

EDITION[®]
RESIDENCES
MIAMI EDGEWATER



NORTH ►

BISCAYNE BAY

*Floor plan not to scale.



The EDITION Residences Miami Edgewater are not owned, developed or sold by Marriott International, Inc. or its affiliates ("Marriott"). Two Roads Development LLC uses the EDITION marks under a license from Marriott, which has not confirmed the accuracy of any of the statements or representations made herein. ORAL REPRESENTATIONS CANNOT BE RELIED UPON AS CORRECTLY STATING THE REPRESENTATIONS OF THE DEVELOPER. FOR CORRECT REPRESENTATIONS, MAKE REFERENCE TO THIS BROCHURE AND TO THE DOCUMENTS REQUIRED BY SECTION 718.503, FLORIDA STATUTES, TO BE FURNISHED BY A DEVELOPER TO A BUYER OR LESSEE. All artist's or architectural renderings, sketches, graphic materials and photos depicted or otherwise described herein are proposed and conceptual only, and are based upon preliminary development plans, which are subject to change. The final shape, design, and square footage of Buyer's Unit are subject to constructed measurements. All dimensions are approximate and subject to construction variances and differing measuring techniques. Plans and dimensions for similar units may contain minor variations from floor to floor. All floor plans and floor plan elements such as: room sizes, casework, other fixtures and furniture are not drawn to scale, may not be included in every unit with that floor plan and are shown for illustrative purposes only. Seller reserves the right to make changes and modifications to plans, materials, specifications, features and delivery of home without notice or obligation. The balconies depicted show the approximate areas for the minimum and maximum balcony sizes within a floor plan line and will vary per level. Consult with your sales representative for exact dimensions. These materials are not intended to be an offer to sell, or solicitation to buy a unit in the condominium. Such an offering shall only be made pursuant to the prospectus (offering circular) for the condominium and no statements should be relied upon unless made in the prospectus or in the applicable purchase agreement. In no event shall any solicitation, offer or sale of a unit in the condominium be made in, or to residents of, any state or country in which such activity would be unlawful. Branding & Creative by kevo.



SIGNATURE RESIDENCE

EDITION
RESIDENCES
MIAMI EDGEWATER

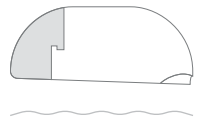
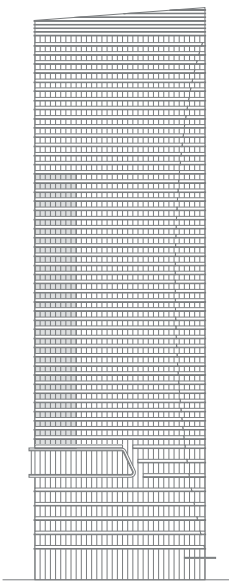
RESIDENCE A
SOUTH
FLOORS 10-40

3 BEDROOMS
3 BATHROOMS
1 POWDER ROOM

INTERIOR AREA:
2,745 SQ FT / 255.02 SQ M

EXTERIOR AREA:
280 SQ FT / 26.01 SQ M

TOTAL AREA:
3,025 SQ FT / 281.03 SQ M



NORTH ►

BISCAYNE BAY

*Floor plan not to scale.



The EDITION Residences Miami Edgewater are not owned, developed or sold by Marriott International, Inc. or its affiliates ("Marriott"). Two Roads Development LLC uses the EDITION marks under a license from Marriott, which has not confirmed the accuracy of any of the statements or representations made herein. ORAL REPRESENTATIONS CANNOT BE RELIED UPON AS CORRECTLY STATING THE REPRESENTATIONS OF THE DEVELOPER. FOR CORRECT REPRESENTATIONS, MAKE REFERENCE TO THIS BROCHURE AND TO THE DOCUMENTS REQUIRED BY SECTION 718.503, FLORIDA STATUTES, TO BE FURNISHED BY A DEVELOPER TO A BUYER OR LESSEE. All artist's or architectural renderings, sketches, graphic materials and photos depicted or otherwise described herein are proposed and conceptual only, and are based upon preliminary development plans, which are subject to change. The final shape, design, and square footage of Buyer's Unit are subject to constructed measurements. All dimensions are approximate and subject to construction variances and differing measuring techniques. Plans and dimensions for similar units may contain minor variations from floor to floor. All floor plans and floor plan elements such as: room sizes, casework, other fixtures and furniture are not drawn to scale, may not be included in every unit with that floor plan and are shown for illustrative purposes only. Seller reserves the right to make changes and modifications to plans, materials, specifications, features and delivery of home without notice or obligation. The balconies depicted show the approximate areas for the minimum and maximum balcony sizes within a floor plan line and will vary per level. Consult with your sales representative for exact dimensions. These materials are not intended to be an offer to sell, or solicitation to buy a unit in the condominium. Such an offering shall only be made pursuant to the prospectus (offering circular) for the condominium and no statements should be relied upon unless made in the prospectus or in the applicable purchase agreement. In no event shall any solicitation, offer or sale of a unit in the condominium be made in, or to residents of, any state or country in which such activity would be unlawful. Branding & Creative by kevo.



SIGNATURE RESIDENCE

EDITION
RESIDENCES
MIAMI EDGEWATER

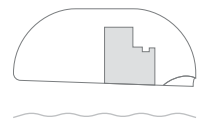
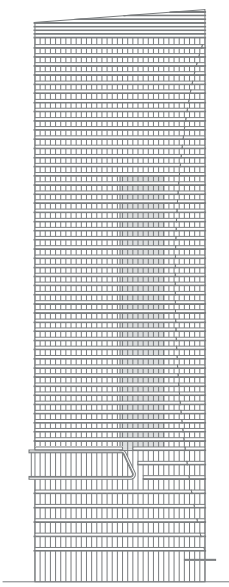
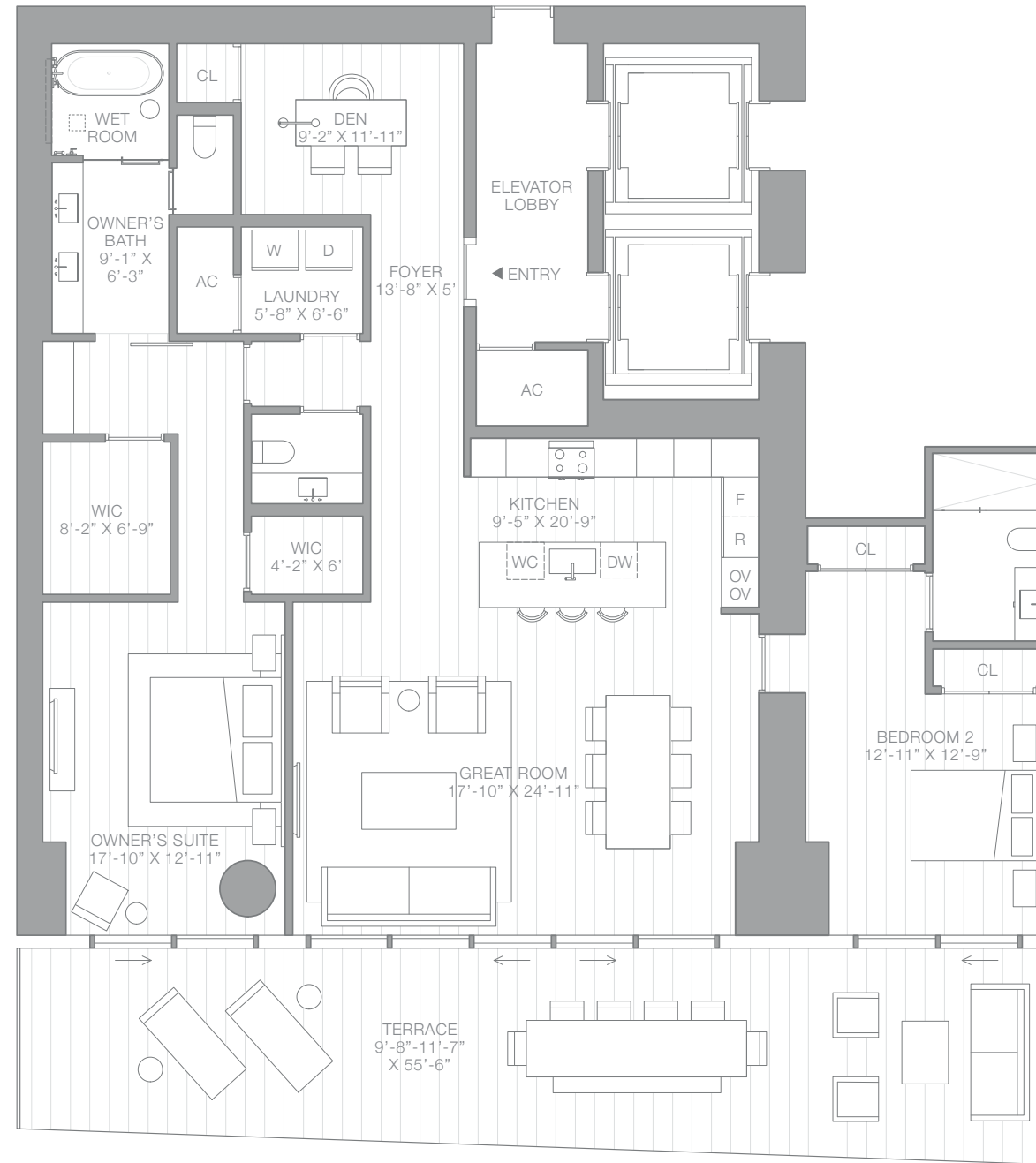
RESIDENCE B2
EAST-NORTH
FLOORS 10-40

2 BEDROOMS + DEN
2 BATHROOMS
1 POWDER ROOM

INTERIOR AREA:
2,331 SQ FT / 216.56 SQ M

EXTERIOR AREA:
590 SQ FT / 54.81 SQ M

TOTAL AREA:
2,921 SQ FT / 271.37 SQ M



NORTH ►

BISCAYNE BAY

*Floor plan not to scale.



The EDITION Residences Miami Edgewater are not owned, developed or sold by Marriott International, Inc. or its affiliates ("Marriott"). Two Roads Development LLC uses the EDITION marks under a license from Marriott, which has not confirmed the accuracy of any of the statements or representations made herein. ORAL REPRESENTATIONS CANNOT BE RELIED UPON AS CORRECTLY STATING THE REPRESENTATIONS OF THE DEVELOPER. FOR CORRECT REPRESENTATIONS, MAKE REFERENCE TO THIS BROCHURE AND TO THE DOCUMENTS REQUIRED BY SECTION 718.503, FLORIDA STATUTES, TO BE FURNISHED BY A DEVELOPER TO A BUYER OR LESSEE. All artist's or architectural renderings, sketches, graphic materials and photos depicted or otherwise described herein are proposed and conceptual only, and are based upon preliminary development plans, which are subject to change. The final shape, design, and square footage of Buyer's Unit are subject to constructed measurements. All dimensions are approximate and subject to construction variances and differing measuring techniques. Plans and dimensions for similar units may contain minor variations from floor to floor. All floor plans and floor plan elements such as: room sizes, casework, other fixtures and furniture are not drawn to scale, may not be included in every unit with that floor plan and are shown for illustrative purposes only. Seller reserves the right to make changes and modifications to plans, materials, specifications, features and delivery of home without notice or obligation. The balconies depicted show the approximate areas for the minimum and maximum balcony sizes within a floor plan line and will vary per level. Consult with your sales representative for exact dimensions. These materials are not intended to be an offer to sell, or solicitation to buy a unit in the condominium. Such an offering shall only be made pursuant to the prospectus (offering circular) for the condominium and no statements should be relied upon unless made in the prospectus or in the applicable purchase agreement. In no event shall any solicitation, offer or sale of a unit in the condominium be made in, or to residents of, any state or country in which such activity would be unlawful. Branding & Creative by kevo.



SIGNATURE RESIDENCE

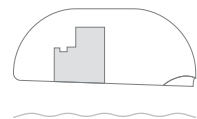
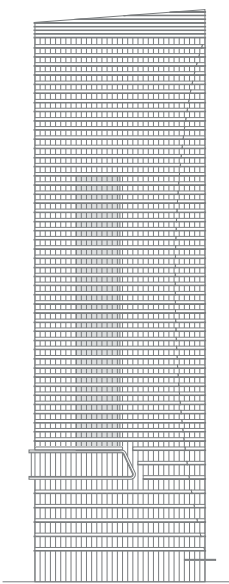
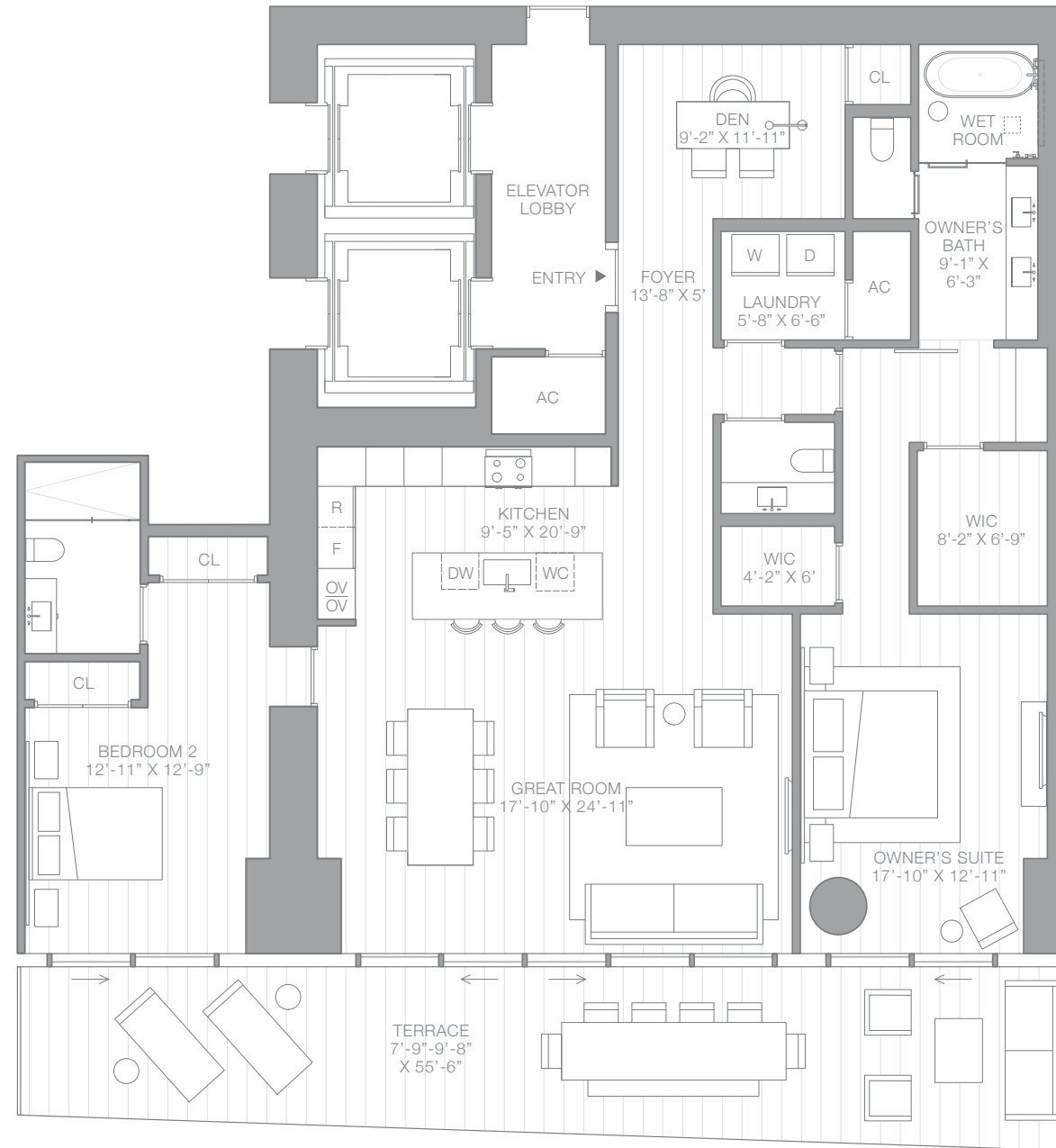
RESIDENCE B2
EAST-SOUTH
FLOORS 10-40

2 BEDROOMS + DEN
2 BATHROOMS
1 POWDER ROOM

INTERIOR AREA:
2,331 SQ FT / 216.56 SQ M

EXTERIOR AREA:
484 SQ FT / 44.97 SQ M

TOTAL AREA:
2,815 SQ FT / 261.53 SQ M



NORTH ►

BISCAYNE BAY

*Floor plan not to scale.



The EDITION Residences Miami Edgewater are not owned, developed or sold by Marriott International, Inc. or its affiliates ("Marriott"). Two Roads Development LLC uses the EDITION marks under a license from Marriott, which has not confirmed the accuracy of any of the statements or representations made herein. ORAL REPRESENTATIONS CANNOT BE RELIED UPON AS CORRECTLY STATING THE REPRESENTATIONS OF THE DEVELOPER. FOR CORRECT REPRESENTATIONS, MAKE REFERENCE TO THIS BROCHURE AND TO THE DOCUMENTS REQUIRED BY SECTION 718.503, FLORIDA STATUTES, TO BE FURNISHED BY A DEVELOPER TO A BUYER OR LESSEE. All artist's or architectural renderings, sketches, graphic materials and photos depicted or otherwise described herein are proposed and conceptual only, and are based upon preliminary development plans, which are subject to change. The final shape, design, and square footage of Buyer's Unit are subject to construction measurements. All dimensions are approximate and subject to construction variances and differing measuring techniques. Plans and dimensions for similar units may contain minor variations from floor to floor. All floor plans and floor plan elements such as: room sizes, casework, other fixtures and furniture are not drawn to scale, may not be included in every unit with that floor plan and are shown for illustrative purposes only. Seller reserves the right to make changes and modifications to plans, materials, specifications, features and delivery of home without notice or obligation. The balconies depicted show the approximate areas for the minimum and maximum balcony sizes within a floor plan line and will vary per level. Consult with your sales representative for exact dimensions. These materials are not intended to be an offer to sell, or solicitation to buy a unit in the condominium. Such an offering shall only be made pursuant to the prospectus (offering circular) for the condominium and no statements should be relied upon unless made in the prospectus or in the applicable purchase agreement. In no event shall any solicitation, offer or sale of a unit in the condominium be made in, or to residents of, any state or country in which such activity would be unlawful. Branding & Creative by kevo.



SKY RESIDENCE

RESIDENCE AAA
NORTH
FLOORS 41-54

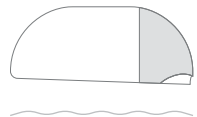
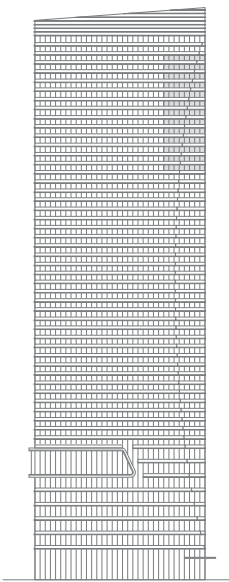
3 BEDROOMS
3 BATHROOMS
1 POWDER ROOM

INTERIOR AREA:
3,108 SQ FT / 288.74 SQ M

EXTERIOR AREA:
502-653 SQ FT / 46.64-60.67 SQ M

TOTAL AREA:
3,610-3,761 SQ FT / 335.38-349.41 SQ M

EDITION[®]
RESIDENCES
MIAMI EDGEWATER



NORTH ►

BISCAYNE BAY

*Floor plan not to scale.



The EDITION Residences Miami Edgewater are not owned, developed or sold by Marriott International, Inc. or its affiliates ("Marriott"). Two Roads Development LLC uses the EDITION marks under a license from Marriott, which has not confirmed the accuracy of any of the statements or representations made herein. ORAL REPRESENTATIONS CANNOT BE RELIED UPON AS CORRECTLY STATING THE REPRESENTATIONS OF THE DEVELOPER. FOR CORRECT REPRESENTATIONS, MAKE REFERENCE TO THIS BROCHURE AND TO THE DOCUMENTS REQUIRED BY SECTION 718.503, FLORIDA STATUTES, TO BE FURNISHED BY A DEVELOPER TO A BUYER OR LESSEE. All artist's or architectural renderings, sketches, graphic materials and photos depicted or otherwise described herein are proposed and conceptual only, and are based upon preliminary development plans, which are subject to change. The final shape, design, and square footage of Buyer's Unit are subject to constructed measurements. All dimensions are approximate and subject to construction variances and differing measuring techniques. Plans and dimensions for similar units may contain minor variations from floor to floor. All floor plans and floor plan elements such as: room sizes, casework, other fixtures and furniture are not drawn to scale, may not be included in every unit with that floor plan and are shown for illustrative purposes only. Seller reserves the right to make changes and modifications to plans, materials, specifications, features and delivery of home without notice or obligation. The balconies depicted show the approximate areas for the minimum and maximum balcony sizes within a floor plan line and will vary per level. Consult with your sales representative for exact dimensions. These materials are not intended to be an offer to sell, or solicitation to buy a unit in the condominium. Such an offering shall only be made pursuant to the prospectus (offering circular) for the condominium and no statements should be relied upon unless made in the prospectus or in the applicable purchase agreement. In no event shall any solicitation, offer or sale of a unit in the condominium be made in, or to residents of, any state or country in which such activity would be unlawful. Branding & Creative by kevo.



SKY RESIDENCE

EDITION
RESIDENCES
MIAMI EDGEWATER

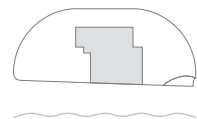
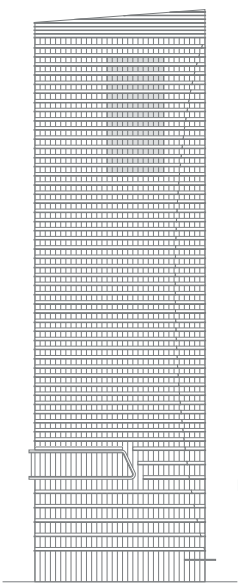
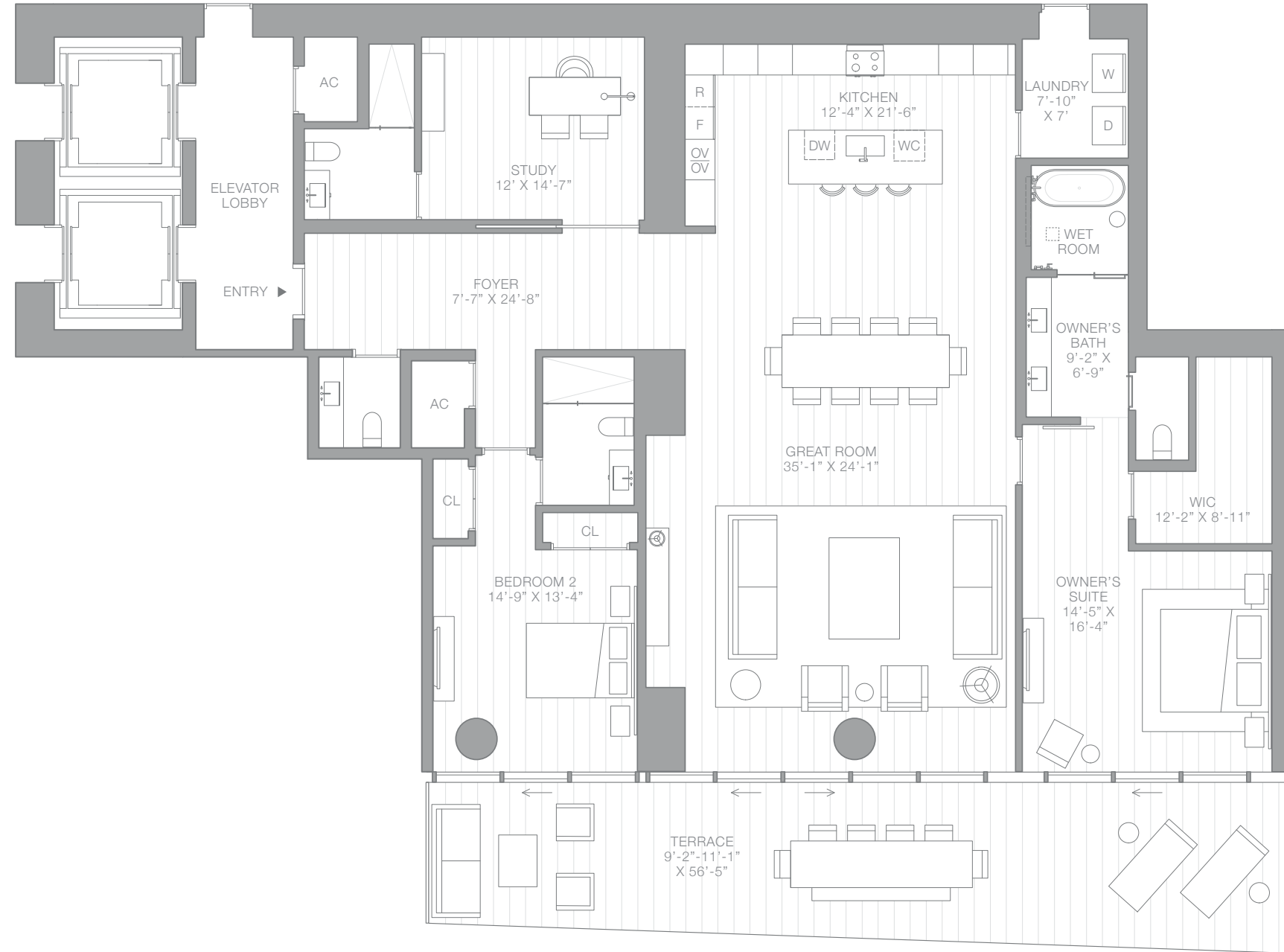
RESIDENCE C
EAST
FLOORS 41-54

2 BEDROOMS + STUDY
3 BATHROOMS
1 POWDER ROOM

INTERIOR AREA:
3,105 SQ FT / 288.46 SQ M

EXTERIOR AREA:
571 SQ FT / 53.05 SQ M

TOTAL AREA:
3,676 SQ FT / 341.51 SQ M



NORTH ►

BISCAYNE BAY

*Floor plan not to scale.



The EDITION Residences Miami Edgewater are not owned, developed or sold by Marriott International, Inc. or its affiliates ("Marriott"). Two Roads Development LLC uses the EDITION marks under a license from Marriott, which has not confirmed the accuracy of any of the statements or representations made herein. ORAL REPRESENTATIONS CANNOT BE RELIED UPON AS CORRECTLY STATING THE REPRESENTATIONS OF THE DEVELOPER. FOR CORRECT REPRESENTATIONS, MAKE REFERENCE TO THIS BROCHURE AND TO THE DOCUMENTS REQUIRED BY SECTION 718.503, FLORIDA STATUTES, TO BE FURNISHED BY A DEVELOPER TO A BUYER OR LESSEE. All artist's or architectural renderings, sketches, graphic materials and photos depicted or otherwise described herein are proposed and conceptual only, and are based upon preliminary development plans, which are subject to change. The final shape, design, and square footage of Buyer's Unit are subject to construction variances and differing measuring techniques. Plans and dimensions for similar units may contain minor variations from floor to floor. All floor plans and floor plan elements such as: room sizes, casework, other fixtures and furniture are not drawn to scale, may not be included in every unit with that floor plan and are shown for illustrative purposes only. Seller reserves the right to make changes and modifications to plans, materials, specifications, features and delivery of home without notice or obligation. The balconies depicted show the approximate areas for the minimum and maximum balcony sizes within a floor plan line and will vary per level. Consult with your sales representative for exact dimensions. These materials are not intended to be an offer to sell, or solicitation to buy a unit in the condominium. Such an offering shall only be made pursuant to the prospectus (offering circular) for the condominium and no statements should be relied upon unless made in the prospectus or in the applicable purchase agreement. In no event shall any solicitation, offer or sale of a unit in the condominium be made in, or to residents of, any state or country in which such activity would be unlawful. Branding & Creative by kevo.



SKY RESIDENCE

EDITION
RESIDENCES
MIAMI EDGEWATER

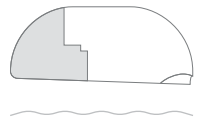
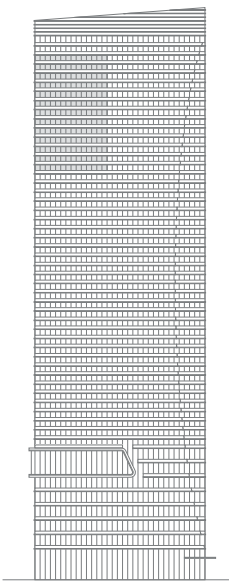
RESIDENCE D
SOUTH
FLOORS 41-54

4 BEDROOMS
4 BATHROOMS
1 POWDER ROOM

INTERIOR AREA:
3,815 SQ FT / 354.43 SQ M

EXTERIOR AREA:
619 SQ FT / 57.51 SQ M

TOTAL AREA:
4,434 SQ FT / 411.93 SQ M



NORTH ►

BISCAYNE BAY

*Floor plan not to scale.



The EDITION Residences Miami Edgewater are not owned, developed or sold by Marriott International, Inc. or its affiliates ("Marriott"). Two Roads Development LLC uses the EDITION marks under a license from Marriott, which has not confirmed the accuracy of any of the statements or representations made herein. ORAL REPRESENTATIONS CANNOT BE RELIED UPON AS CORRECTLY STATING THE REPRESENTATIONS OF THE DEVELOPER. FOR CORRECT REPRESENTATIONS, MAKE REFERENCE TO THIS BROCHURE AND TO THE DOCUMENTS REQUIRED BY SECTION 718.503, FLORIDA STATUTES, TO BE FURNISHED BY A DEVELOPER TO A BUYER OR LESSEE. All artist's or architectural renderings, sketches, graphic materials and photos depicted or otherwise described herein are proposed and conceptual only, and are based upon preliminary development plans, which are subject to change. The final shape, design, and square footage of Buyer's Unit are subject to constructed measurements. All dimensions are approximate and subject to construction variances and differing measuring techniques. Plans and dimensions for similar units may contain minor variations from floor to floor. All floor plans and floor plan elements such as: room sizes, casework, other fixtures and furniture are not drawn to scale, may not be included in every unit with that floor plan and are shown for illustrative purposes only. Seller reserves the right to make changes and modifications to plans, materials, specifications, features and delivery of home without notice or obligation. The balconies depicted show the approximate areas for the minimum and maximum balcony sizes within a floor plan line and will vary per level. Consult with your sales representative for exact dimensions. These materials are not intended to be an offer to sell, or solicitation to buy a unit in the condominium. Such an offering shall only be made pursuant to the prospectus (offering circular) for the condominium and no statements should be relied upon unless made in the prospectus or in the applicable purchase agreement. In no event shall any solicitation, offer or sale of a unit in the condominium be made in, or to residents of, any state or country in which such activity would be unlawful. Branding & Creative by kevo.

