

PARAMOUNT

MIAMI WORLDCENTER



700 Feet

470 Residences

Residences: Levels 10-54

Typical Floorplate | Level 11-45

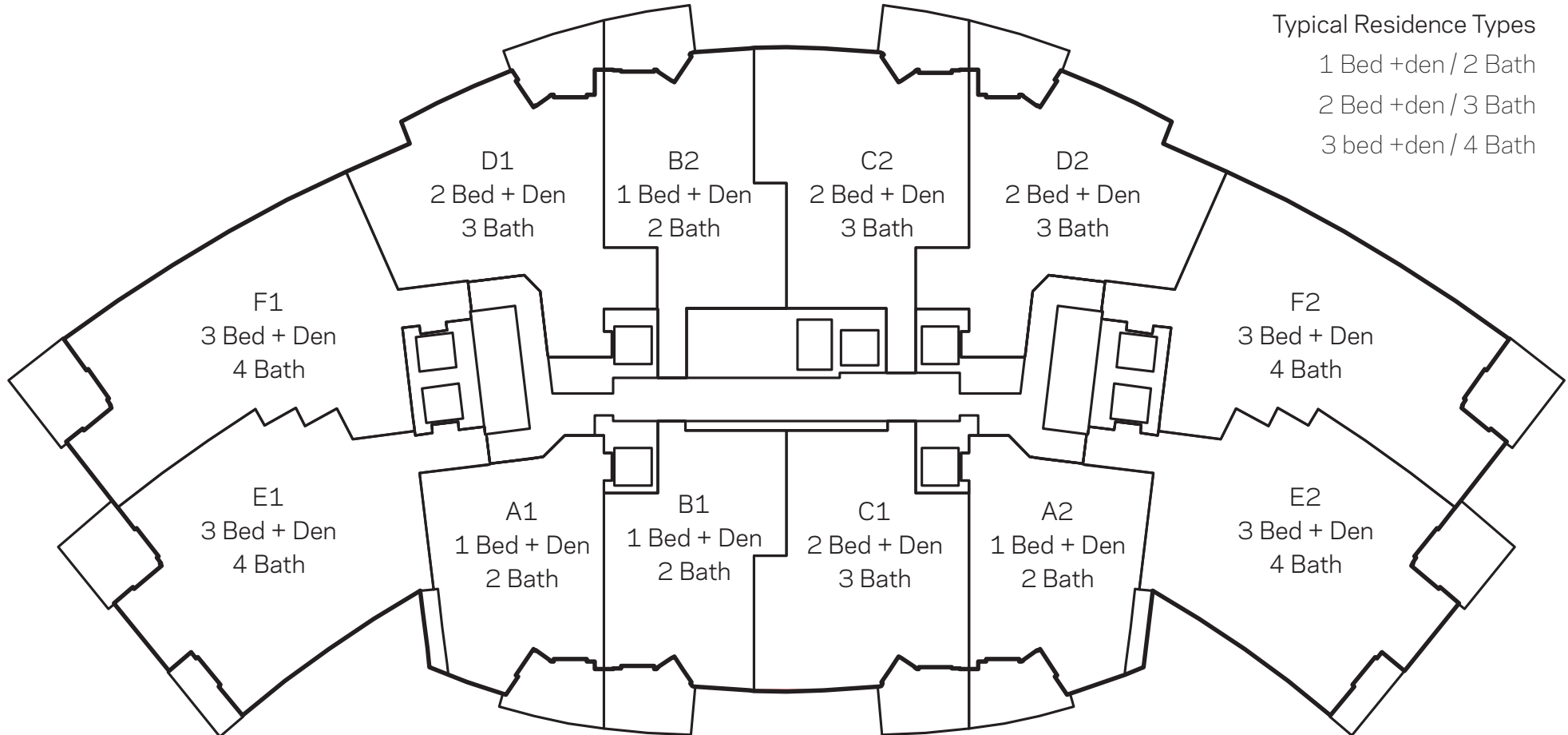
12 Residences per Floor

Typical Residence Types

1 Bed + den / 2 Bath

2 Bed + den / 3 Bath

3 bed + den / 4 Bath

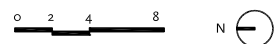
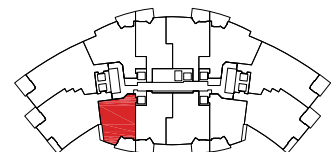
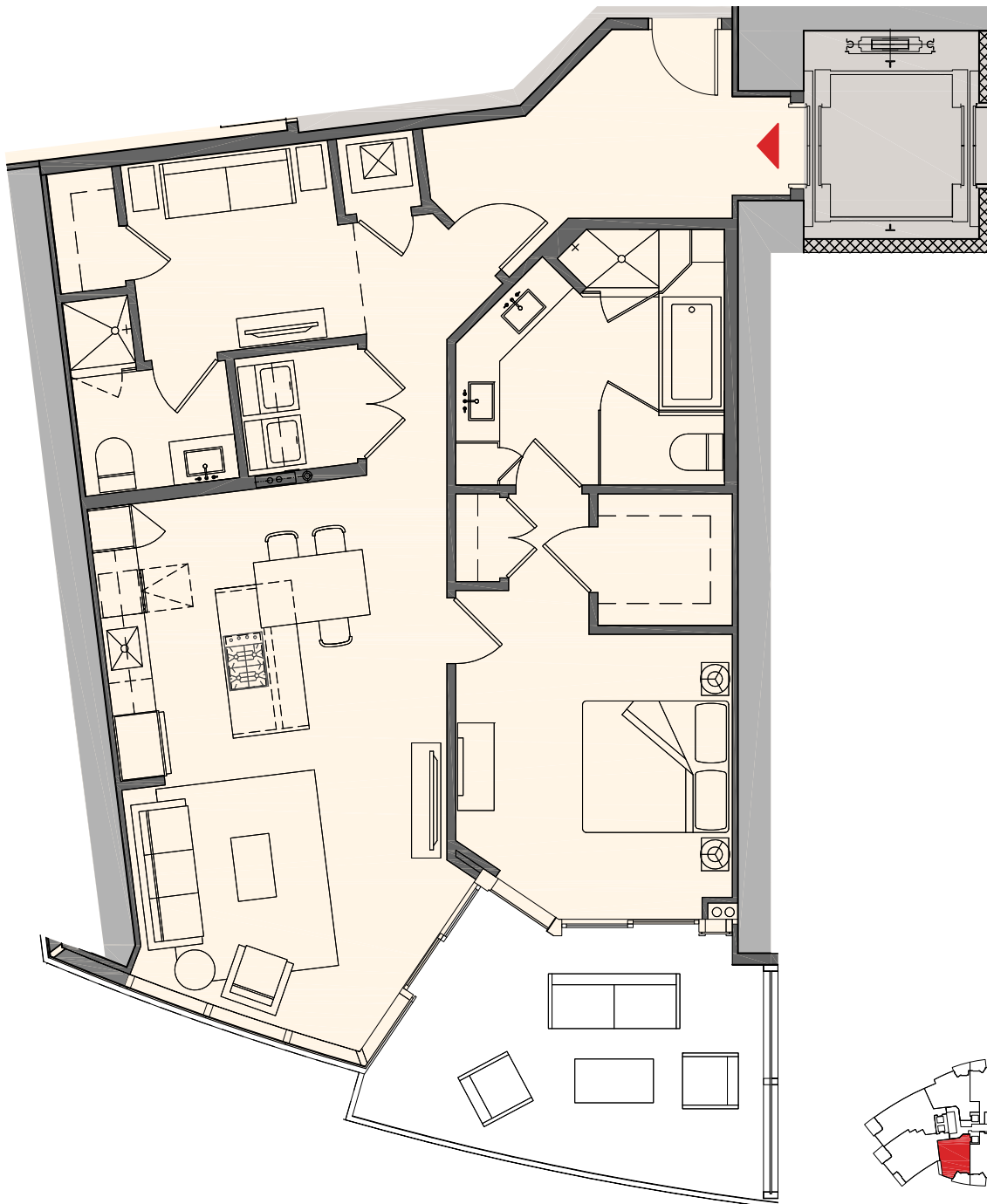


These drawings are conceptual only and are for the convenience of reference. They should not be relied upon as representations, express or implied, of the final detail of the Residences. Units shown are examples of unit types and may not depict actual units. Stated square footages are ranges for a particular unit type and are measured to the exterior boundaries of the exterior walls and the centerline of interior demising walls and in fact vary from the area that would be determined by using the description and definition of the "Unit" set forth in the Declaration (which generally only includes the interior airspace between the perimeter walls and excludes interior structural components).

Residence A1

1 Bedroom + Den | 2 Bath

Interior:	1,294 sq. ft.	120 m ²
Outdoor:	197 sq. ft.	18 m ²
Total:	1,491 sq. ft.	138 m ²

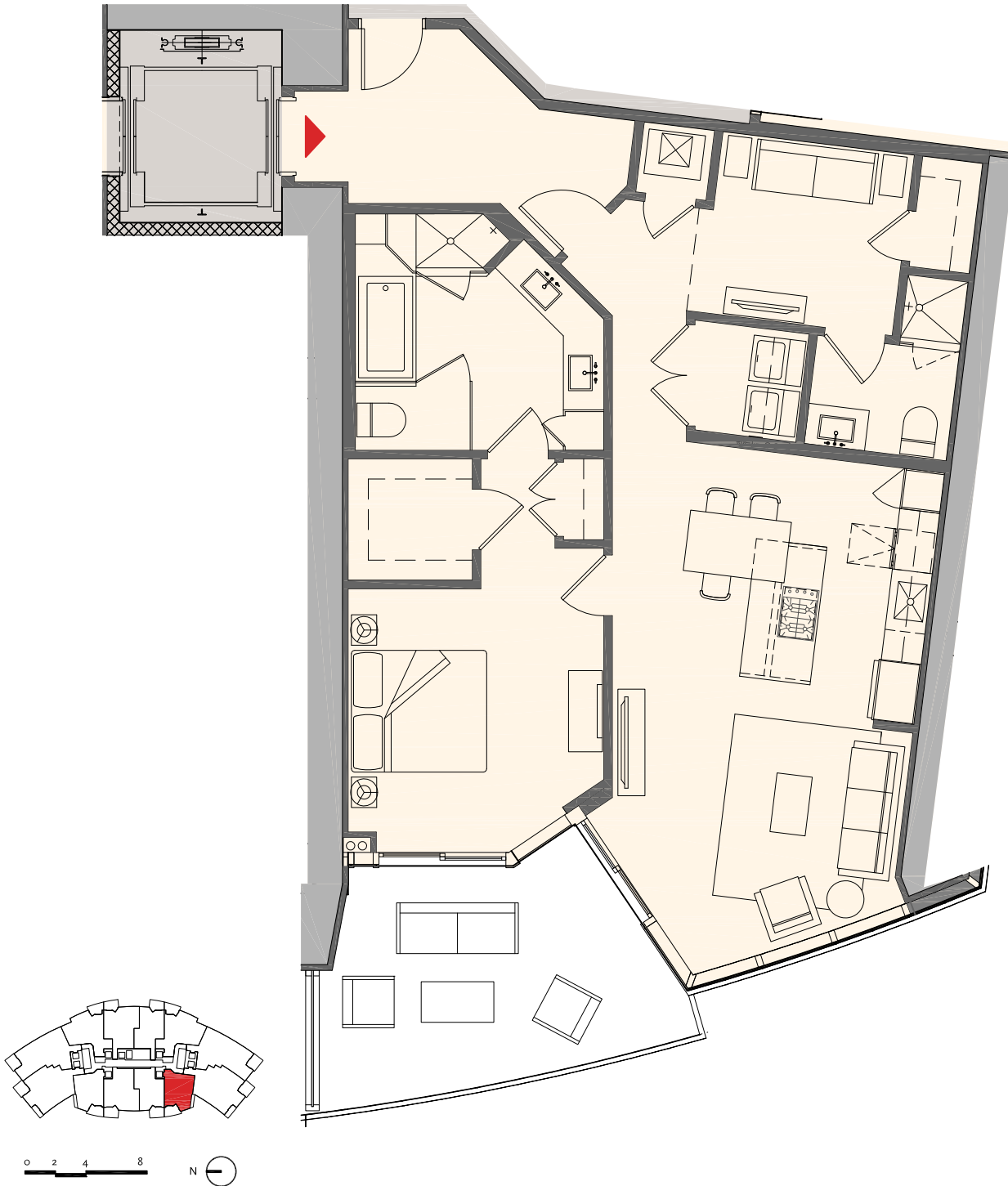


These drawings are conceptual only and are for the convenience of reference. They should not be relied upon as representations, express or implied, of the final detail of the residences. Units shown are examples of unit types and may not depict actual units. Stated square footages are ranges for a particular unit type and are measured to the exterior boundaries of the exterior walls and the centerline of interior demising walls and in fact vary from the area that would be determined by using the description and definition of the "Unit" set forth in the Declaration (which generally only includes the interior airspace between the perimeter walls and excludes interior structural components).

Residence A2

1 Bedroom + Den | 2 Bath

Interior:	1,294 sq. ft.	120 m ²
Outdoor:	197 sq. ft.	18 m ²
Total:	1,491 sq. ft.	138 m ²

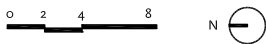
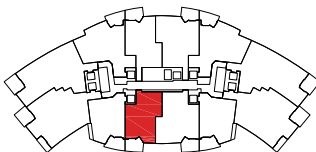
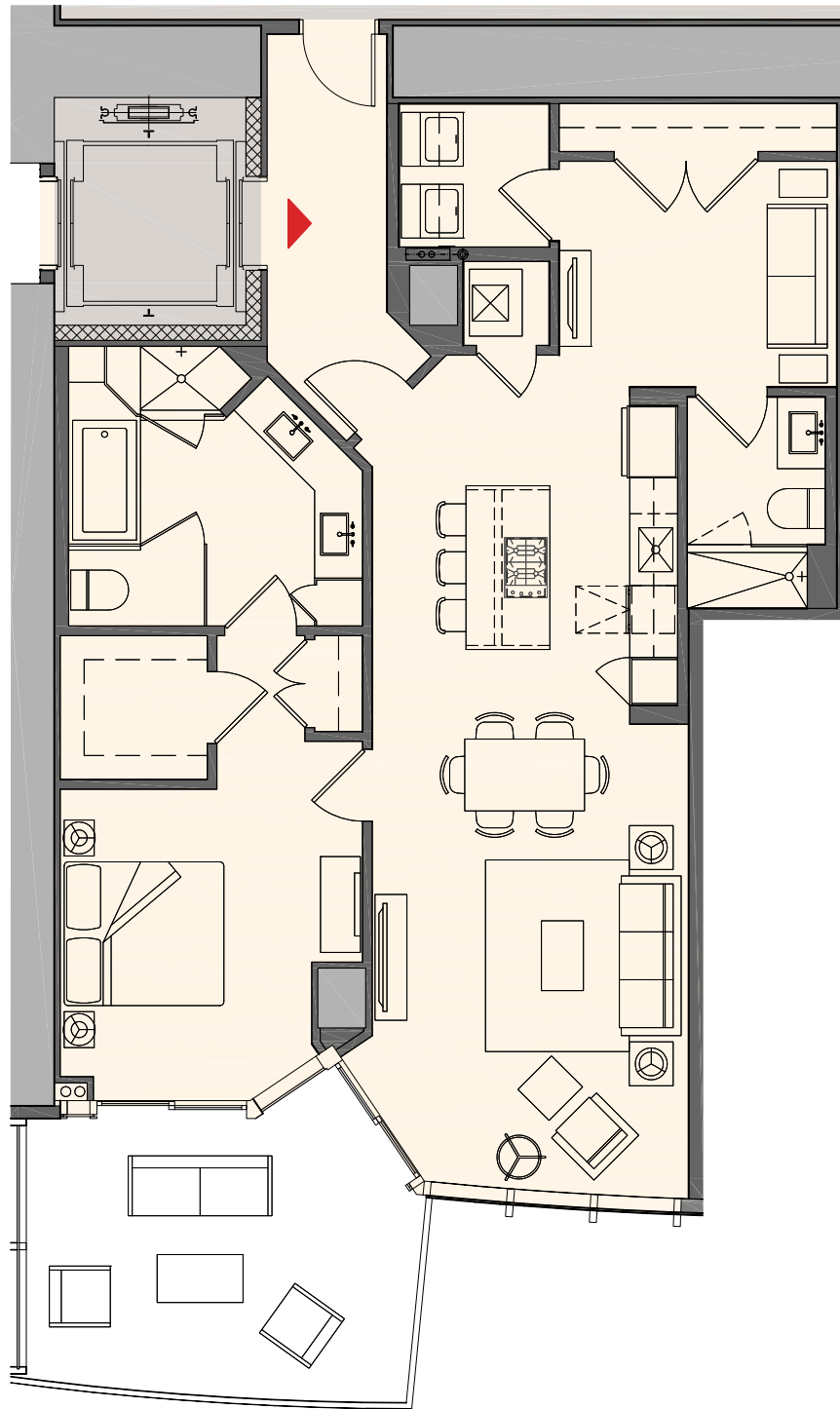


These drawings are conceptual only and are for the convenience of reference. They should not be relied upon as representations, express or implied, of the final detail of the residences. Units shown are examples of unit types and may not depict actual units. Stated square footages are ranges for a particular unit type and are measured to the exterior boundaries of the exterior walls and the centerline of interior demising walls and in fact vary from the area that would be determined by using the description and definition of the "Unit" set forth in the Declaration (which generally only includes the interior airspace between the perimeter walls and excludes interior structural components).

Residence B1

1 Bedroom + Den | 2 Bath

Interior:	1,318 sq. ft.	122 m ²
Outdoor:	205 sq. ft.	19 m ²
Total:	1,521 sq. ft.	141 m ²

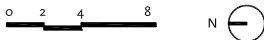
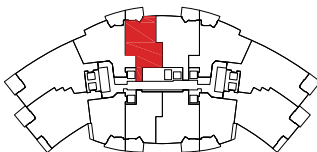
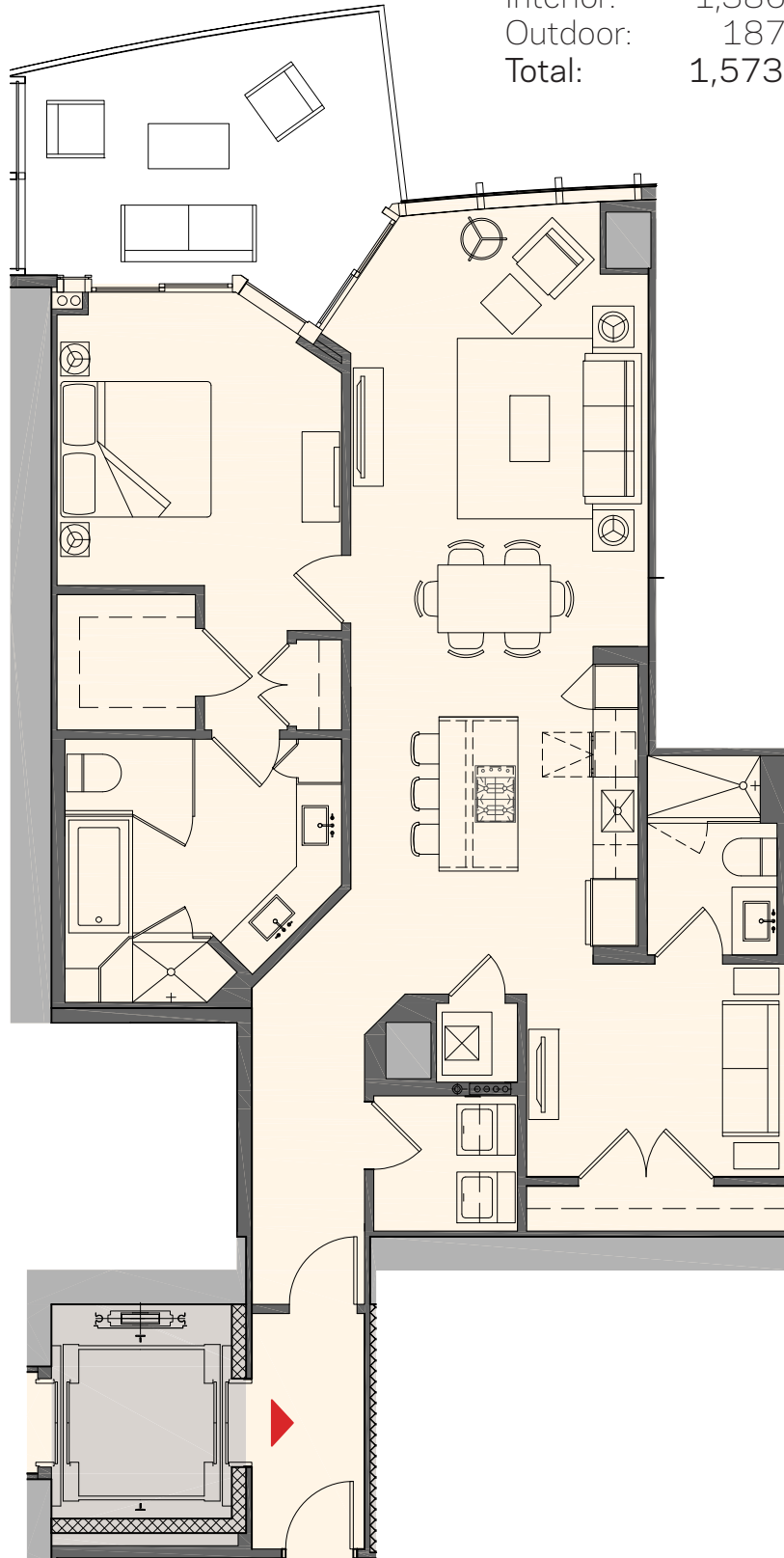


These drawings are conceptual only and are for the convenience of reference. They should not be relied upon as representations, express or implied, of the final detail of the residences. Units shown are examples of unit types and may not depict actual units. Stated square footages are ranges for a particular unit type and are measured to the exterior boundaries of the exterior walls and the centerline of interior demising walls and in fact vary from the area that would be determined by using the description and definition of the "Unit" set forth in the Declaration (which generally only includes the interior airspace between the perimeter walls and excludes interior structural components).

Residence B2

1 Bedroom + Den | 2 Bath

Interior:	1,386 sq. ft.	129 m ²
Outdoor:	187 sq. ft.	17 m ²
Total:	1,573 sq. ft.	146 m ²

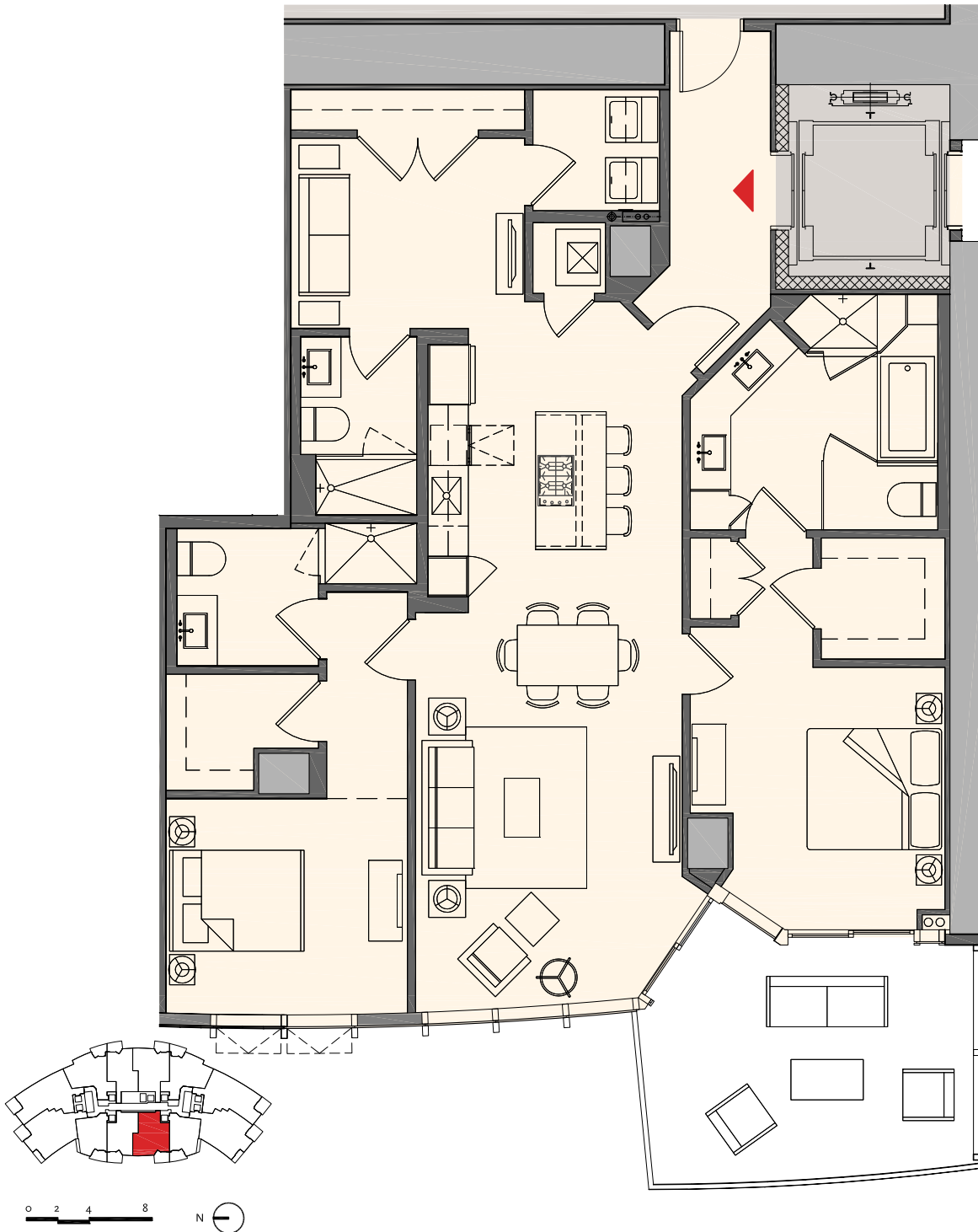


These drawings are conceptual only and are for the convenience of reference. They should not be relied upon as representations, express or implied, of the final detail of the residences. Units shown are examples of unit types and may not depict actual units. Stated square footages are ranges for a particular unit type and are measured to the exterior boundaries of the exterior walls and the centerline of interior demising walls and in fact vary from the area that would be determined by using the description and definition of the "Unit" set forth in the Declaration (which generally only includes the interior airspace between the perimeter walls and excludes interior structural components).

Residence C1

2 Bedroom + Den | 3 Bath

Interior:	1,630 sq. ft.	151 m ²
Outdoor:	205 sq. ft.	19 m ²
Total:	1,835 sq. ft.	170 m ²

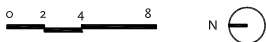
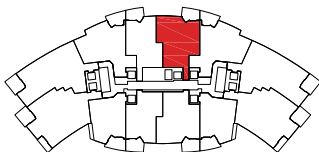
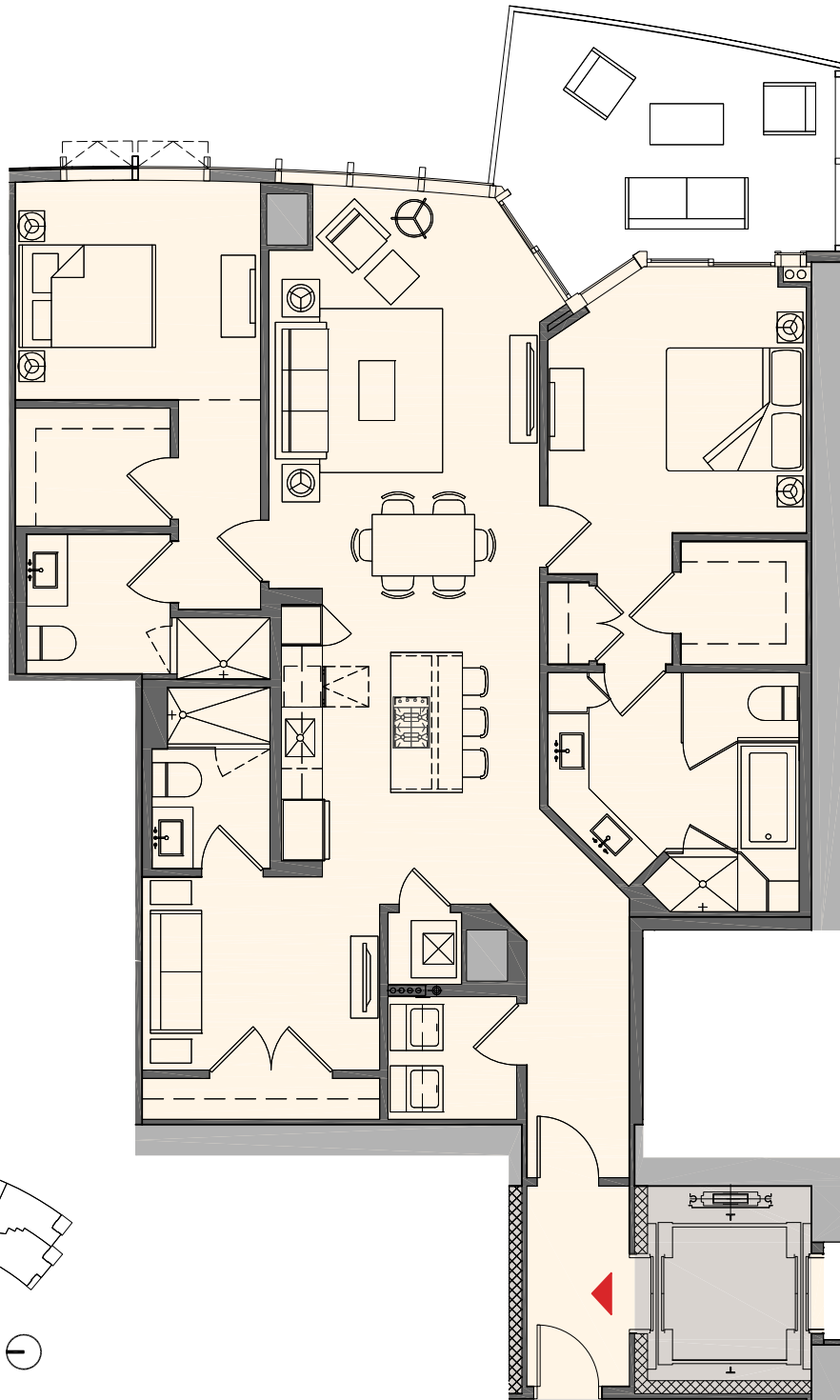


These drawings are conceptual only and are for the convenience of reference. They should not be relied upon as representations, express or implied, of the final detail of the residences. Units shown are examples of unit types and may not depict actual units. Stated square footages are ranges for a particular unit type and are measured to the exterior boundaries of the exterior walls and the centerline of interior demising walls and in fact vary from the area that would be determined by using the description and definition of the "Unit" set forth in the Declaration (which generally only includes the interior airspace between the perimeter walls and excludes interior structural components).

Residence C2

2 Bedroom + Den | 3 Bath

Interior:	1,690 sq. ft.	157 m ²
Outdoor:	187 sq. ft.	17 m ²
Total:	1,877 sq. ft.	174 m ²



These drawings are conceptual only and are for the convenience of reference. They should not be relied upon as representations, express or implied, of the final detail of the residences. Units shown are examples of unit types and may not depict actual units. Stated square footages are ranges for a particular unit type and are measured to the exterior boundaries of the exterior walls and the centerline of interior demising walls and in fact vary from the area that would be determined by using the description and definition of the "Unit" set forth in the Declaration (which generally only includes the interior airspace between the perimeter walls and excludes interior structural components).

Residence D1

2 Bedroom + Den | 3 Bath

Interior:	1,753 sq. ft.	163 m ²
Outdoor:	199 sq. ft.	18 m ²
Total:	1,952 sq. ft.	181 m ²



These drawings are conceptual only and are for the convenience of reference. They should not be relied upon as representations, express or implied, of the final detail of the residences. Units shown are examples of unit types and may not depict actual units. Stated square footages are ranges for a particular unit type and are measured to the exterior boundaries of the exterior walls and the centerline of interior demising walls and in fact vary from the area that would be determined by using the description and definition of the "Unit" set forth in the Declaration (which generally only includes the interior airspace between the perimeter walls and excludes interior structural components).

Residence D2

2 Bedroom + Den | 3 Bath

Interior:	1,753 sq. ft.	163 m ²
Outdoor:	199 sq. ft.	18 m ²
Total:	1,952 sq. ft.	181 m ²



These drawings are conceptual only and are for the convenience of reference. They should not be relied upon as representations, express or implied, of the final detail of the residences. Units shown are examples of unit types and may not depict actual units. Stated square footages are ranges for a particular unit type and are measured to the exterior boundaries of the exterior walls and the centerline of interior demising walls and in fact vary from the area that would be determined by using the description and definition of the "Unit" set forth in the Declaration (which generally only includes the interior airspace between the perimeter walls and excludes interior structural components).



Residence E1

3 Bedroom + Den | 4 Bath

Interior:	2,320 sq. ft.	216 m ²
Outdoor:	291 sq. ft.	27 m ²
Total:	2,611 sq. ft.	243 m ²

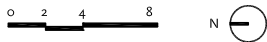
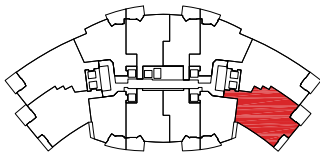
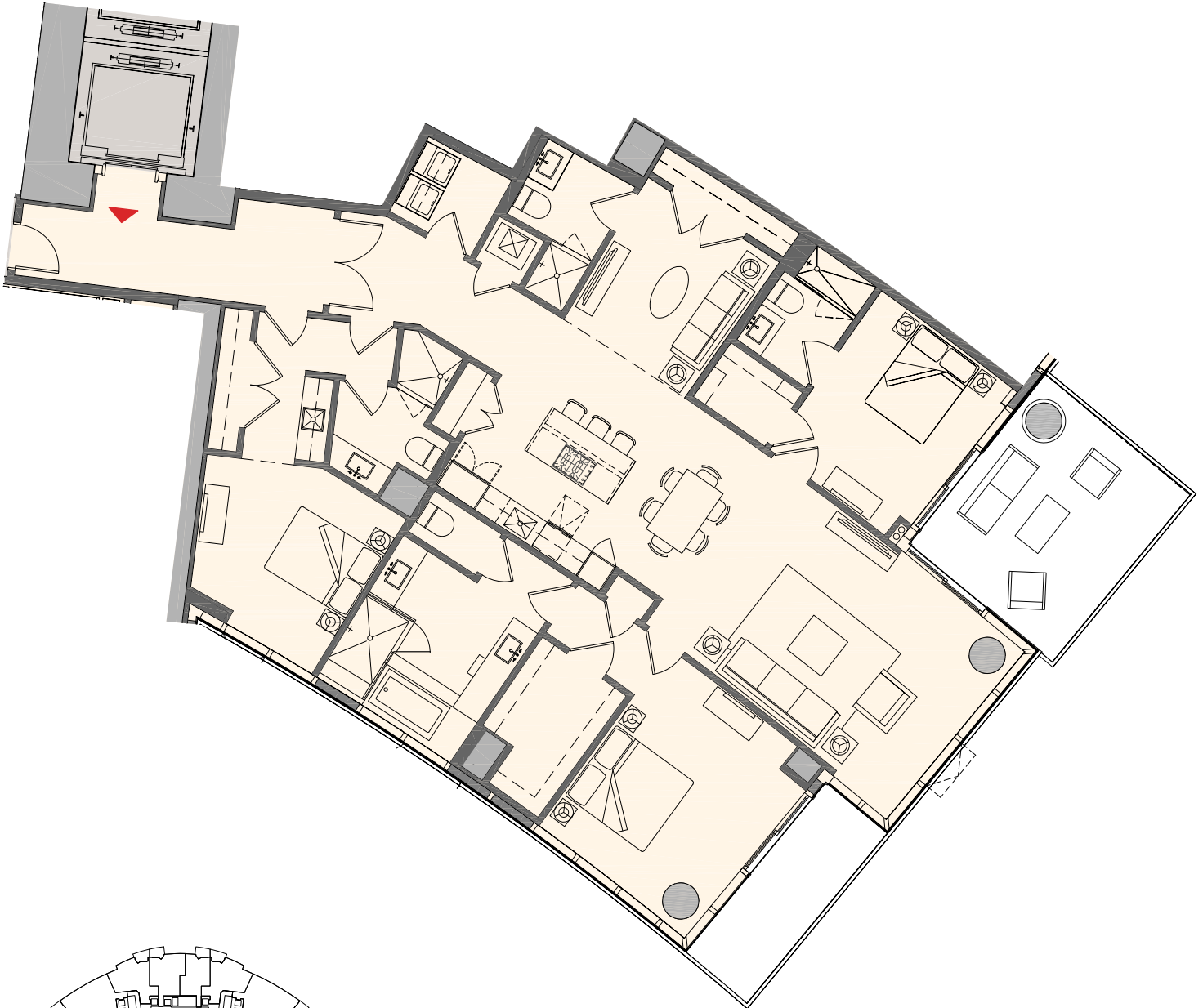


These drawings are conceptual only and are for the convenience of reference. They should not be relied upon as representations, express or implied, of the final detail of the residences. Units shown are examples of unit types and may not depict actual units. Stated square footages are ranges for a particular unit type and are measured to the exterior boundaries of the exterior walls and the centerline of interior demising walls and in fact vary from the area that would be determined by using the description and definition of the "Unit" set forth in the Declaration (which generally only includes the interior airspace between the perimeter walls and excludes interior structural components).

Residence E2

3 Bedroom + Den | 4 Bath

Interior:	2,320 sq. ft.	216 m ²
Outdoor:	291 sq. ft.	27 m ²
Total:	2,611 sq. ft.	243 m ²



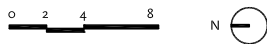
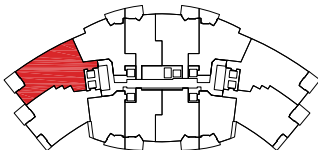
These drawings are conceptual only and are for the convenience of reference. They should not be relied upon as representations, express or implied, of the final detail of the residences. Units shown are examples of unit types and may not depict actual units. Stated square footages are ranges for a particular unit type and are measured to the exterior boundaries of the exterior walls and the centerline of interior demising walls and in fact vary from the area that would be determined by using the description and definition of the "Unit" set forth in the Declaration (which generally only includes the interior airspace between the perimeter walls and excludes interior structural components).



Residence F1

3 Bedroom + Den | 4 Bath

Interior:	2,376 sq. ft.	221 m ²
Outdoor:	202 sq. ft.	19 m ²
Total:	2,578 sq. ft.	240 m ²



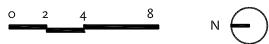
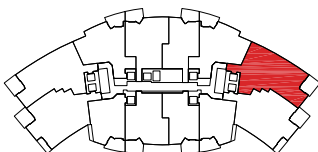
These drawings are conceptual only and are for the convenience of reference. They should not be relied upon as representations, express or implied, of the final detail of the residences. Units shown are examples of unit types and may not depict actual units. Stated square footages are ranges for a particular unit type and are measured to the exterior boundaries of the exterior walls and the centerline of interior demising walls and in fact vary from the area that would be determined by using the description and definition of the "Unit" set forth in the Declaration (which generally only includes the interior airspace between the perimeter walls and excludes interior structural components).



Residence F2

3 Bedroom + Den | 4 Bath

Interior:	2,376 sq. ft.	221 m ²
Outdoor:	202 sq. ft.	19 m ²
Total:	2,578 sq. ft.	240 m ²



These drawings are conceptual only and are for the convenience of reference. They should not be relied upon as representations, express or implied, of the final detail of the residences. Units shown are examples of unit types and may not depict actual units. Stated square footages are ranges for a particular unit type and are measured to the exterior boundaries of the exterior walls and the centerline of interior demising walls and in fact vary from the area that would be determined by using the description and definition of the "Unit" set forth in the Declaration (which generally only includes the interior airspace between the perimeter walls and excludes interior structural components).