

## RESIDENCE 01

LEVELS 3-7

3 Bedrooms, 4.5 Baths + Den

Residence: 3,781

Terrace: 832

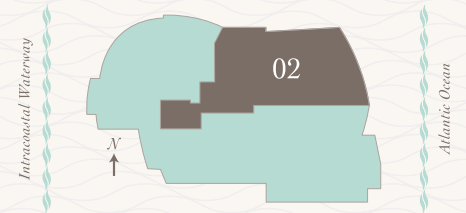
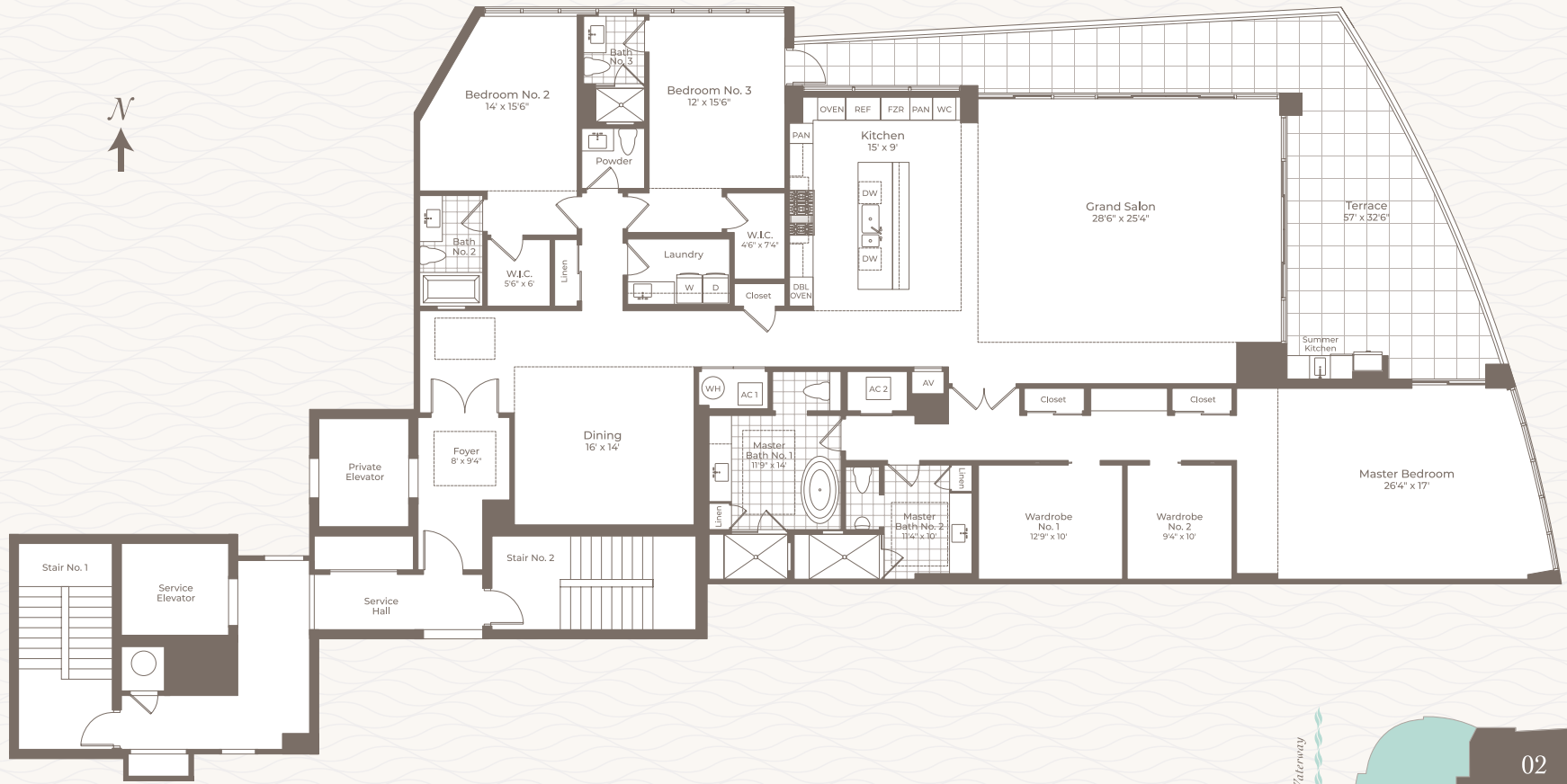
Total: 4,613

Paint-To-Paint: 3,593 SQ. FT.

# SeaGlass

JUPITER ISLAND

Stated dimensions are measured to the exterior boundaries of the exterior wall and the center line of the interior demising walls and, in fact, vary from the dimensions that would be determined by using the description and definition of the "unit" set forth in the declaration (which generally only includes the interior airspace between the perimeter walls and excludes interior structural components). Additionally, measurements of rooms set forth on any floor plan are generally taken at the greatest points of each given room (as if the room were a perfect rectangle), without regard for any cut outs. Accordingly, the area of the actual room will typically be smaller than the product obtained by multiplying the stated length times the width. All dimensions are approximate and all floor plans and development plans are subject to change.



# RESIDENCE 02

LEVELS 3-7

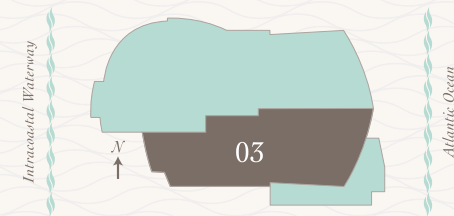
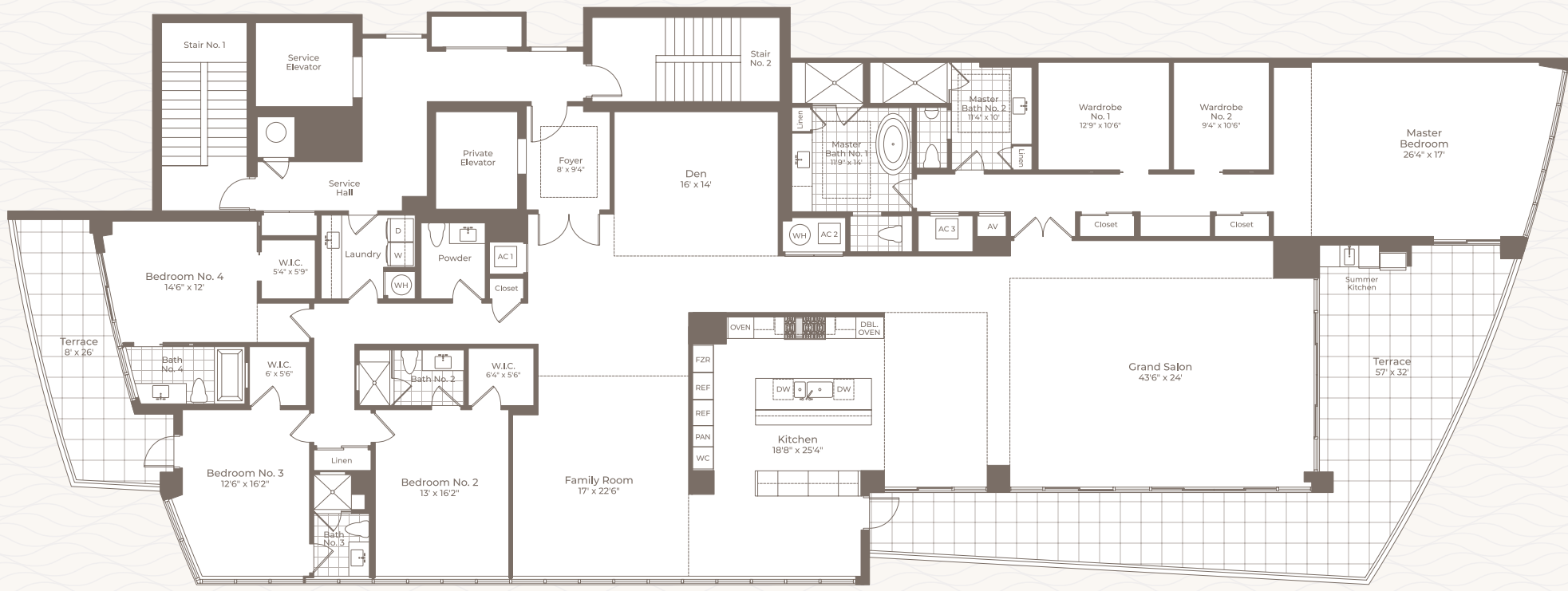
3 Bedrooms, 4.5 Baths

Residence:	3,940
Terrace:	698
<b>Total:</b>	<b>4,638</b>
Paint-To-Paint:	3,734 SQ. FT.

# SeaGlass

JUPITER ISLAND

Stated dimensions are measured to the exterior boundaries of the exterior wall and the center line of the interior demising walls and, in fact, vary from the dimensions that would be determined by using the description and definition of the "unit" set forth in the declaration (which generally only includes the interior airspace between the perimeter walls and excludes interior structural components). Additionally, measurements of rooms set forth on any floor plan are generally taken at the greatest points of each given room (as if the room were a perfect rectangle), without regard for any cut outs. Accordingly, the area of the actual room will typically be smaller than the product obtained by multiplying the stated length times the width. All dimensions are approximate and all floor plans and development plans are subject to change.



# RESIDENCE 03

LEVELS 3-7

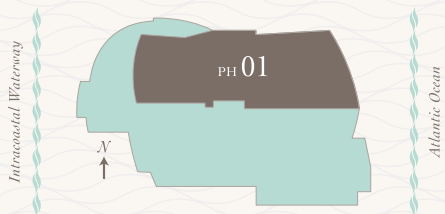
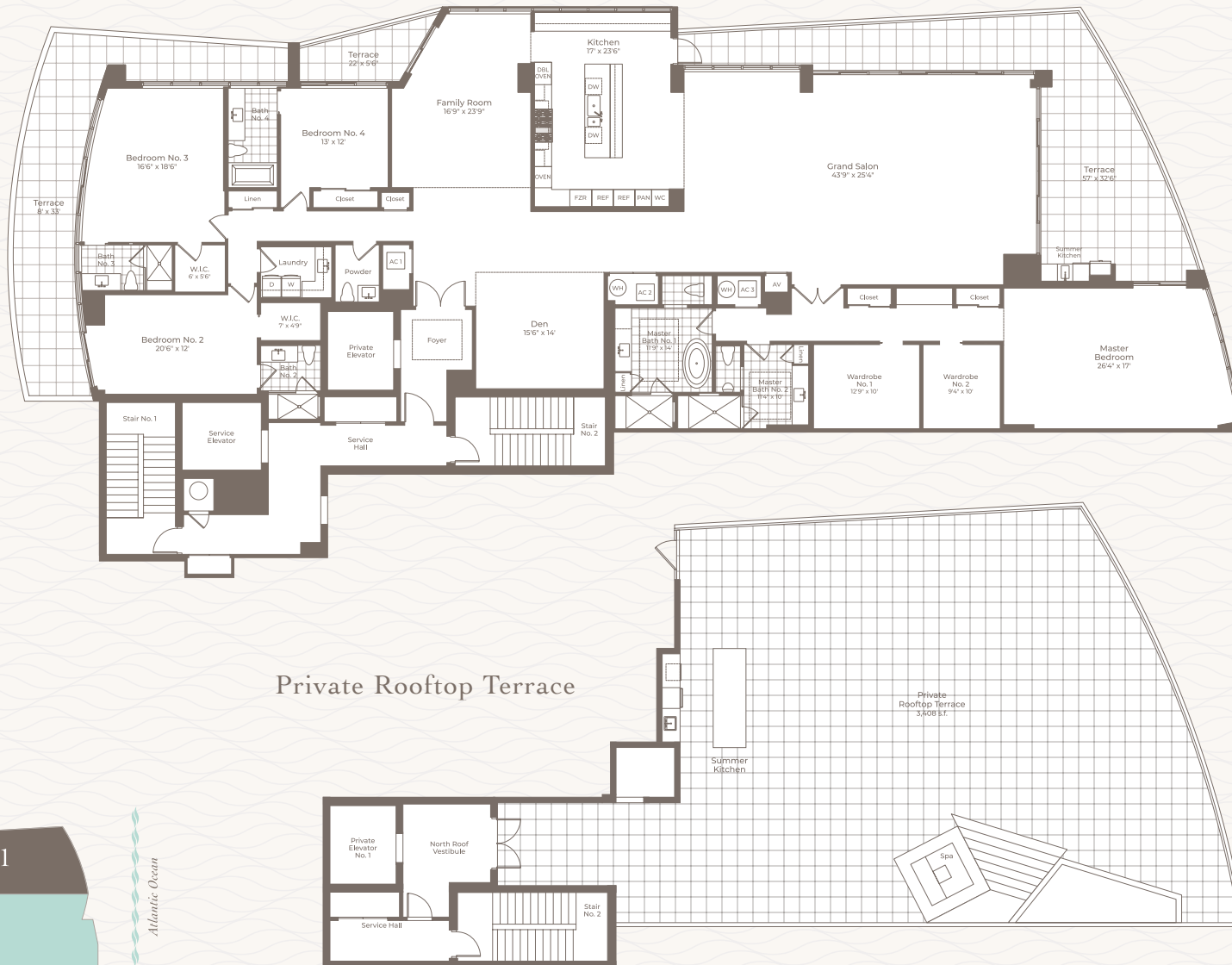
4 Bedrooms, 5.5 Baths, Family Room + Den

Residence:	5,210
Terrace:	1,003
<b>Total:</b>	<b>6,213</b>
Paint-To-Paint:	4,959 SQ. FT.

# SeaGlass

JUPITER ISLAND

Stated dimensions are measured to the exterior boundaries of the exterior wall and the center line of the interior demising walls and, in fact, vary from the dimensions that would be determined by using the description and definition of the "unit" set forth in the declaration (which generally only includes the interior airspace between the perimeter walls and excludes interior structural components). Additionally, measurements of rooms set forth on any floor plan are generally taken at the greatest points of each given room (as if the room were a perfect rectangle), without regard for any cut outs. Accordingly, the area of the actual room will typically be smaller than the product obtained by multiplying the stated length times the width. All dimensions are approximate and all floor plans and development plans are subject to change.



# PENTHOUSE 01

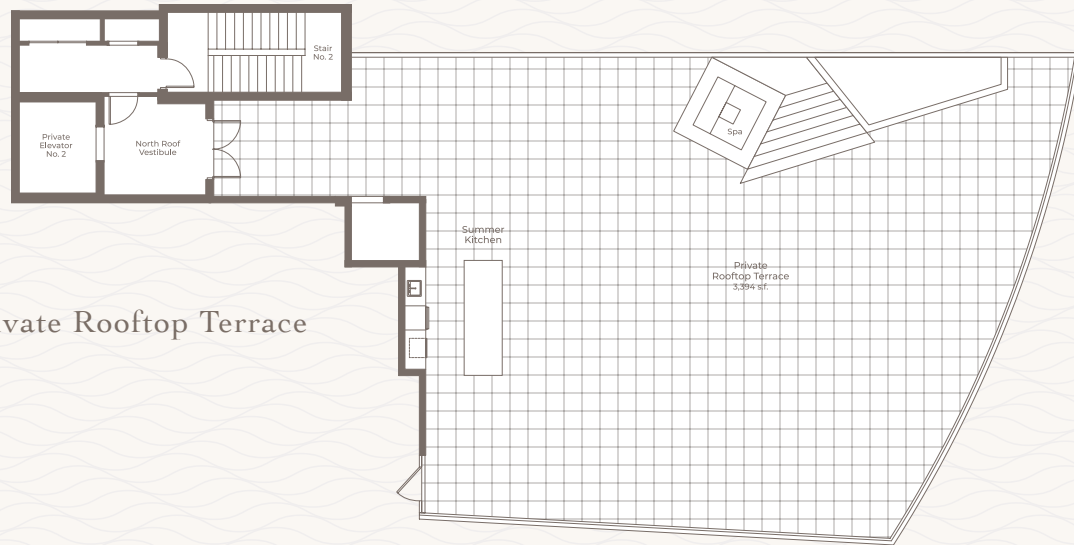
4 Bedrooms, 5.5 Baths, Family Room, Den  
+ Private Rooftop Terrace

Residence:	5,323
Terrace:	1,274
Rooftop Terrace:	3,408
<b>Total:</b>	<b>10,005</b>
Paint-To-Paint:	5,065 SQ. FT.

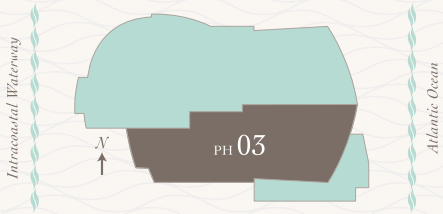
# SeaGlass

JUPITER ISLAND

Stated dimensions are measured to the exterior boundaries of the exterior wall and the center line of the interior demising walls and, in fact, vary from the dimensions that would be determined by using the description and definition of the "unit" set forth in the declaration (which generally only includes the interior airspace between the perimeter walls and excludes interior structural components). Additionally, measurements of rooms set forth on any floor plan are generally taken at the greatest points of each given room (as if the room were a perfect rectangle), without regard for any cut outs. Accordingly, the area of the actual room will typically be smaller than the product obtained by multiplying the stated length times the width. All dimensions are approximate and all floor plans and development plans are subject to change.



Private Rooftop Terrace



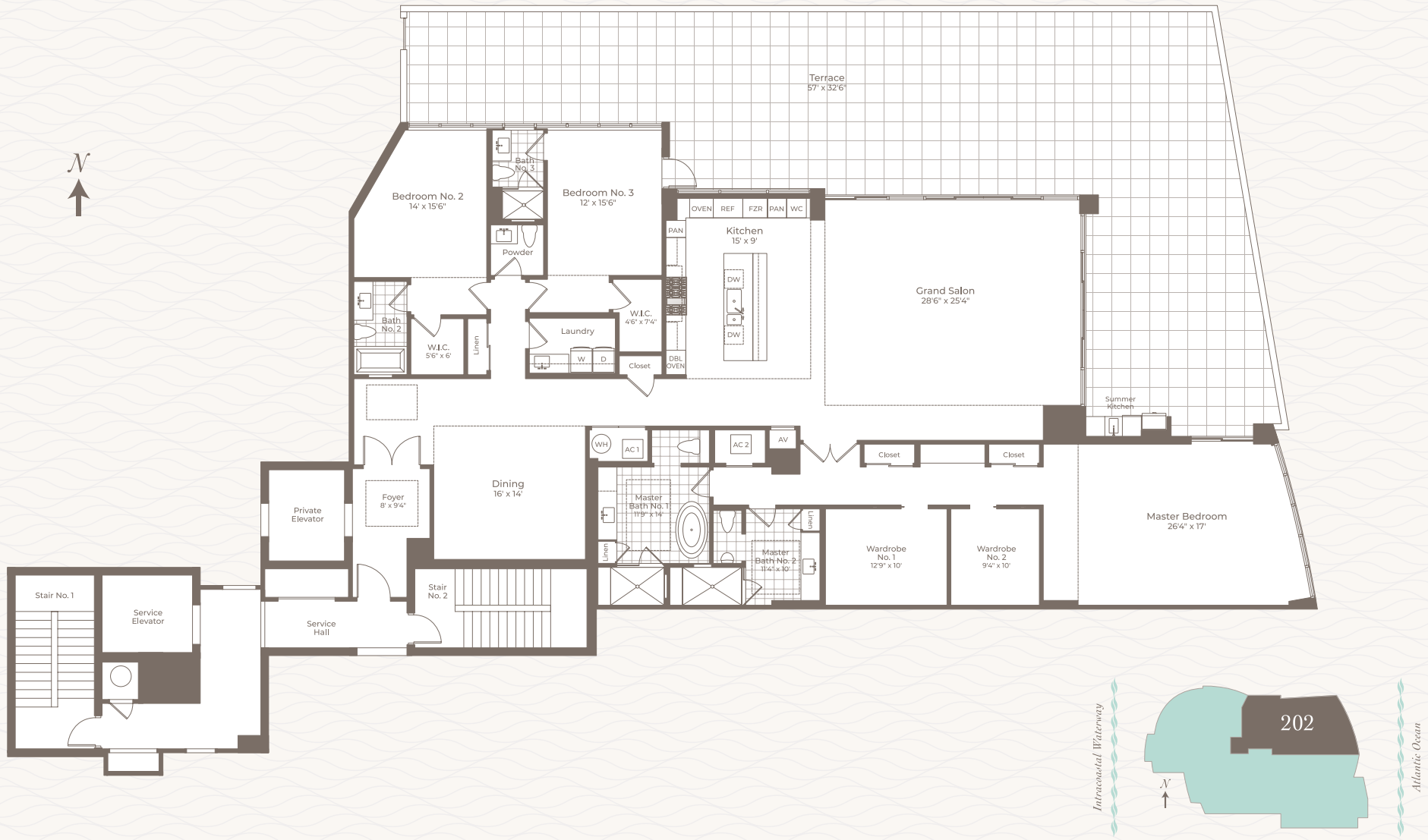
# PENTHOUSE 03

4 Bedrooms, 5.5 Baths, Family Room, Den  
+ Private Rooftop Terrace

Residence:	5,210
Terrace:	1,003
Rooftop Terrace:	3,394
<b>Total:</b>	<b>9,607</b>
Paint-To-Paint:	4,959 SQ. FT.

**SeaGlass**  
JUPITER ISLAND

Stated dimensions are measured to the exterior boundaries of the exterior wall and the center line of the interior demising walls and, in fact, vary from the dimensions that would be determined by using the description and definition of the "unit" set forth in the declaration (which generally only includes the interior airspace between the perimeter walls and excludes interior structural components). Additionally, measurements of rooms set forth on any floor plan are generally taken at the greatest points of each given room (as if the room were a perfect rectangle), without regard for any cut outs. Accordingly, the area of the actual room will typically be smaller than the product obtained by multiplying the stated length times the width. All dimensions are approximate and all floor plans and development plans are subject to change.



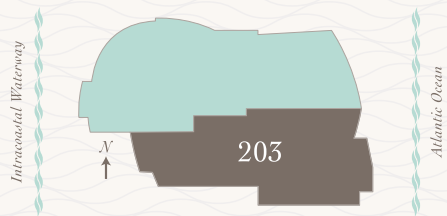
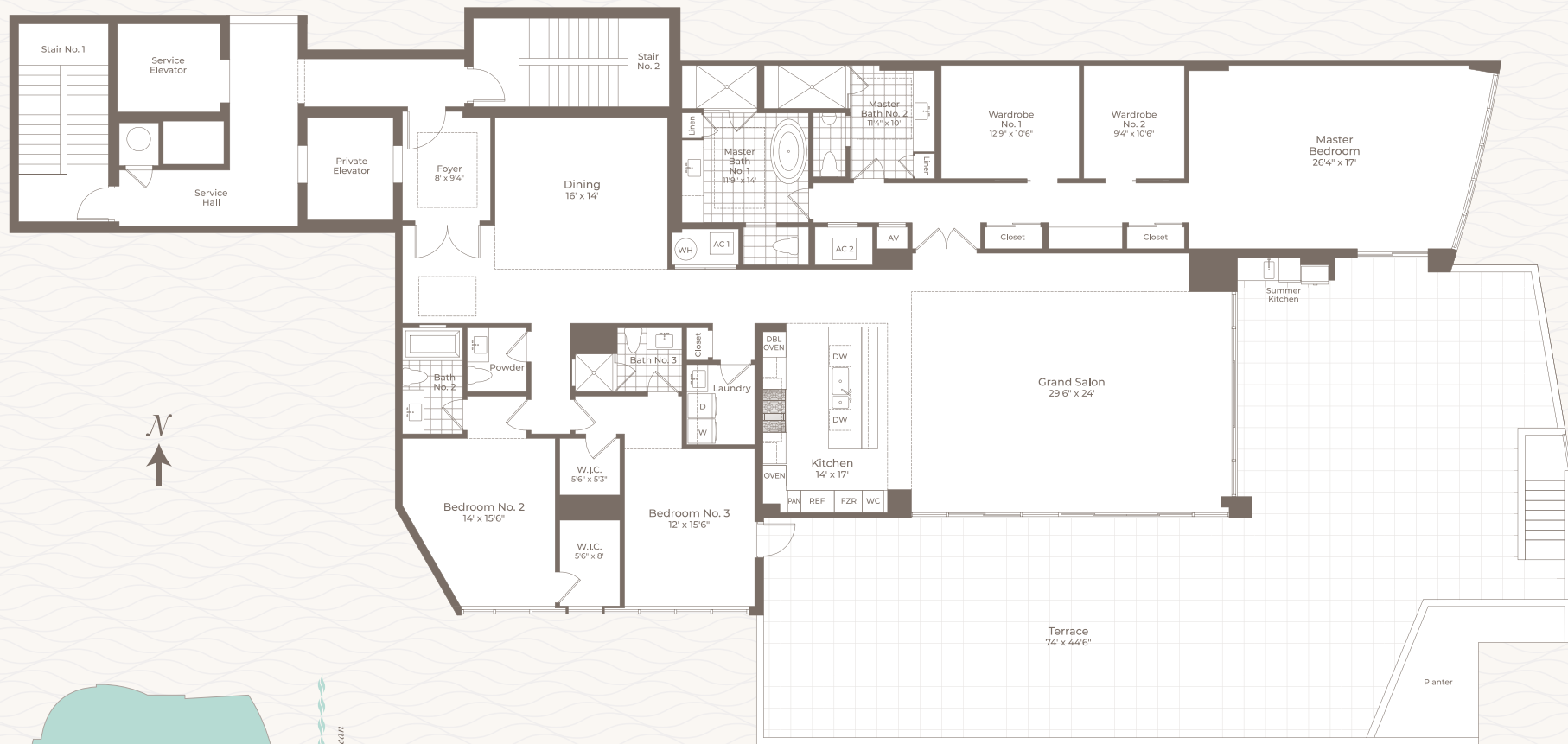
# RESIDENCE 202

3 Bedrooms, 4.5 Baths

Residence:	3,940
Terrace:	2,017
Total:	5,957
Paint-To-Paint:	3,734 SQ. FT.

**SeaGlass**  
JUPITER ISLAND

Stated dimensions are measured to the exterior boundaries of the exterior wall and the center line of the interior demising walls and, in fact, vary from the dimensions that would be determined by using the description and definition of the "unit" set forth in the declaration (which generally only includes the interior airspace between the perimeter walls and excludes interior structural components). Additionally, measurements of rooms set forth on any floor plan are generally taken at the greatest points of each given room (as if the room were a perfect rectangle), without regard for any cut outs. Accordingly, the area of the actual room will typically be smaller than the product obtained by multiplying the stated length times the width. All dimensions are approximate and all floor plans and development plans are subject to change.



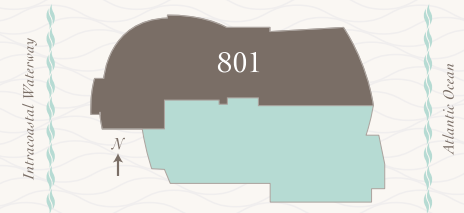
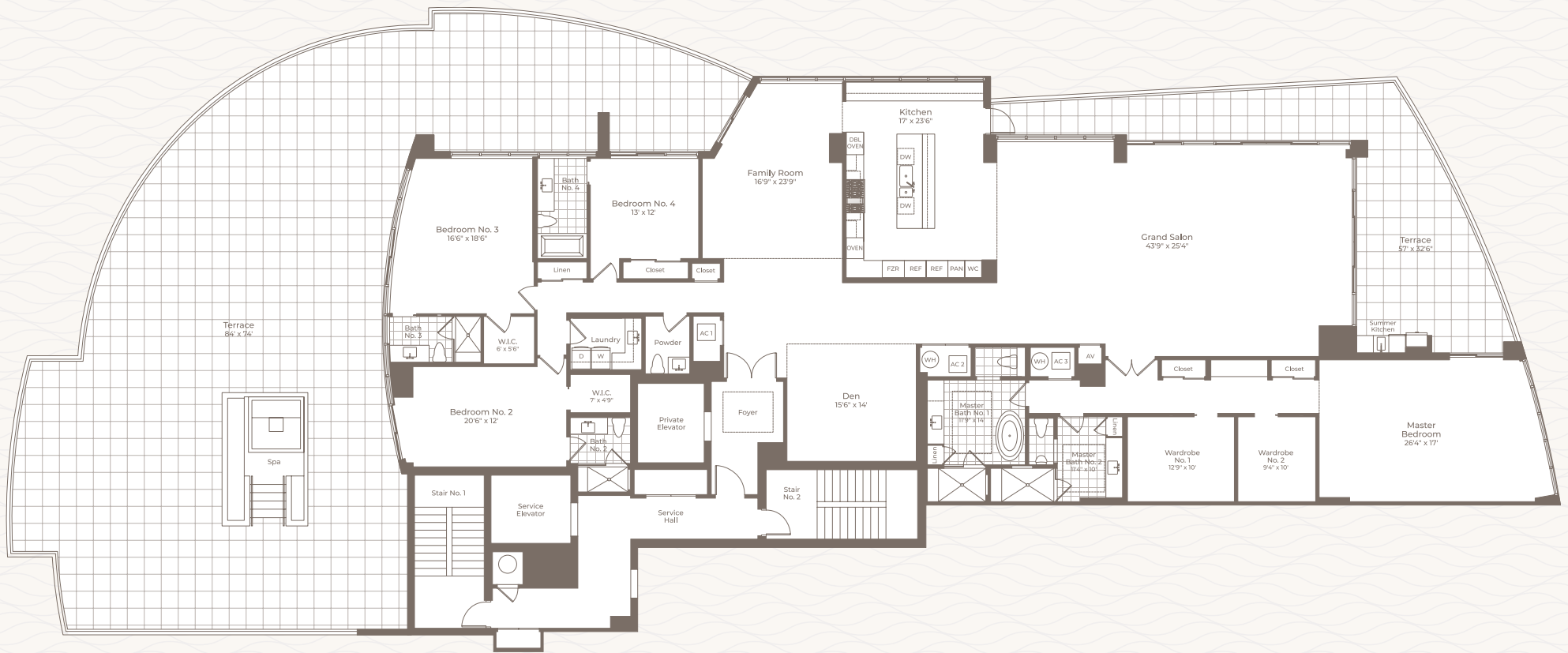
## RESIDENCE 203

3 Bedrooms, 4.5 Baths

Residence:	3,877
Terrace:	2,065
Total:	5,942
Paint-To-Paint:	3,655 SQ. FT.

**SeaGlass**  
JUPITER ISLAND

Stated dimensions are measured to the exterior boundaries of the exterior wall and the center line of the interior demising walls and, in fact, vary from the dimensions that would be determined by using the description and definition of the "unit" set forth in the declaration (which generally only includes the interior airspace between the perimeter walls and excludes interior structural components). Additionally, measurements of rooms set forth on any floor plan are generally taken at the greatest points of each given room (as if the room were a perfect rectangle), without regard for any cut outs. Accordingly, the area of the actual room will typically be smaller than the product obtained by multiplying the stated length times the width. All dimensions are approximate and all floor plans and development plans are subject to change.



## RESIDENCE 801

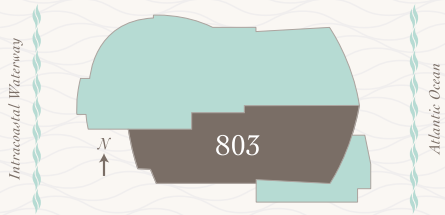
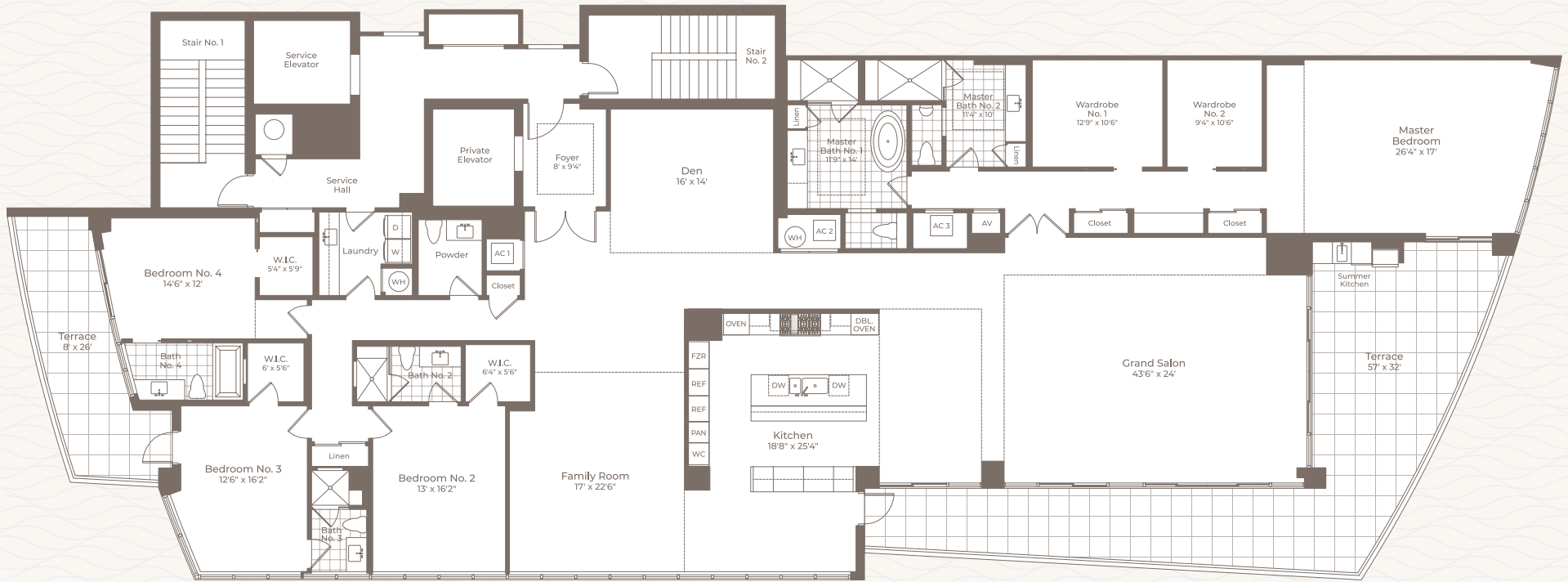
4 Bedrooms, 5.5 Baths, Family Room + Den

Residence: 5,323  
 Terrace: 3,917  
 Total: 9,240  
 Paint-To-Paint: 5,065 SQ. FT.

SeaGlass  
 JUPITER ISLAND

Stated dimensions are measured to the exterior boundaries of the exterior wall and the center line of the interior demising walls and, in fact, vary from the dimensions that would be determined by using the description and definition of the "unit" set forth in the declaration (which generally only includes the interior airspace between the perimeter walls and excludes interior structural components). Additionally, measurements of rooms set forth on any floor plan are generally taken at the greatest points of each given room (as if the room were a perfect rectangle), without regard for any cut outs. Accordingly, the area of the actual room will typically be smaller than the product obtained by multiplying the stated length times the width. All dimensions are approximate and all floor plans and development plans are subject to change.





## RESIDENCE 803

4 Bedrooms, 5.5 Baths, Family Room + Den

Residence: 5,210

Terrace: 1,003

Total: 6,213

Paint-To-Paint: 4,959 SQ. FT.

# SeaGlass

JUPITER ISLAND

Stated dimensions are measured to the exterior boundaries of the exterior wall and the center line of the interior demising walls and, in fact, vary from the dimensions that would be determined by using the description and definition of the "unit" set forth in the declaration (which generally only includes the interior airspace between the perimeter walls and excludes interior structural components). Additionally, measurements of rooms set forth on any floor plan are generally taken at the greatest points of each given room (as if the room were a perfect rectangle), without regard for any cut outs. Accordingly, the area of the actual room will typically be smaller than the product obtained by multiplying the stated length times the width. All dimensions are approximate and all floor plans and development plans are subject to change.