

MINI FOLLETO

72 Park

MIAMI BEACH

EN MEDIO DE TODO

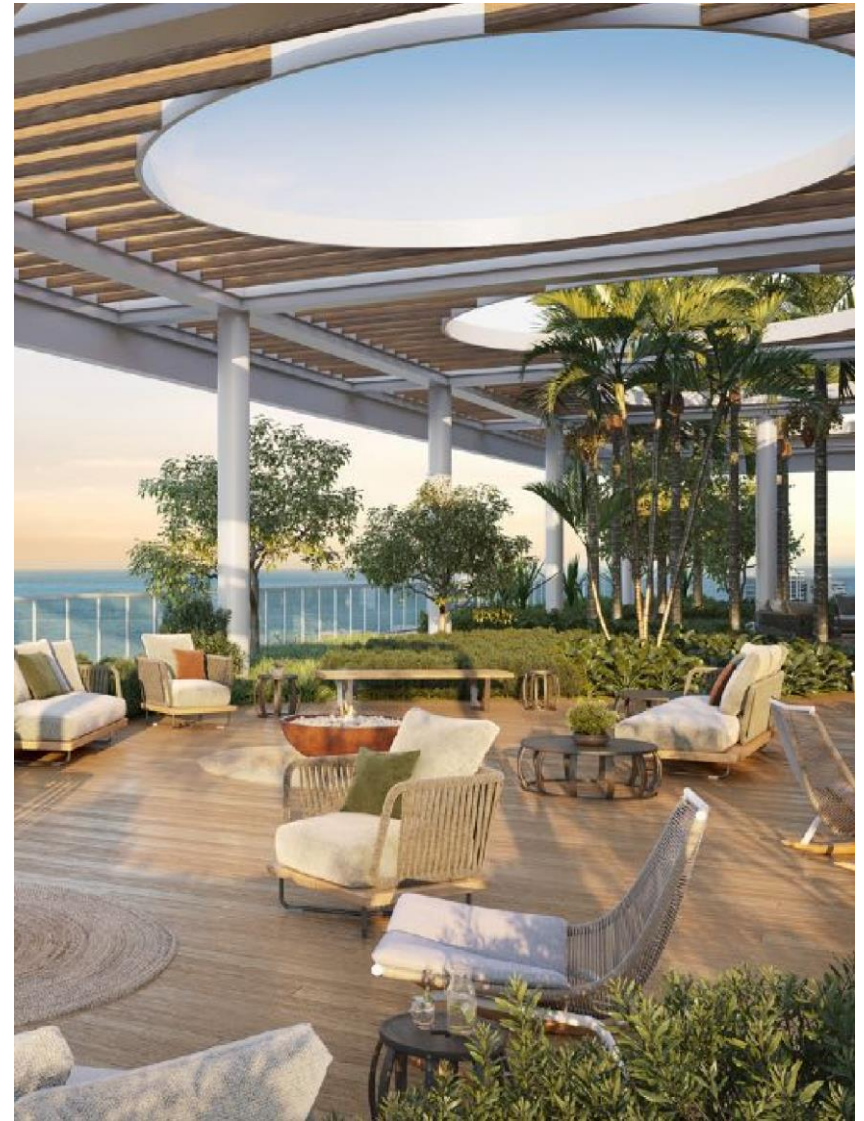


BIENVENIDOS A UN NUEVO
ESTILO DE VIDA DE PLAYA



72 Park trae sofisticación casual al relajado vecindario frente a la playa de Miami Beach, con 22 pisos de residencias modernas que lo miran todo, ofreciendo vistas panorámicas sin obstáculos a través de relucientes vidrios de piso a techo del Océano Atlántico, Miami Beach y el horizonte del centro de Miami

Entrega verano 2024



Un lugar especial En medio de todo

MIAMI BEACH

Este vecindario de Miami Beach es una joya costera escondida llena de atracciones para los entusiastas del aire libre. Desde la vasta extensión de Miami Beach hasta North Beach Oceanside Park, Miami Beach Tennis Center, Normandy Shores Golf Club, canchas de voleibol de playa, alquiler de motos acuáticas y kayaks, y el paseo marítimo de Miami Beach, que se extiende desde 87th Terrace hasta South Pointe Park. Restaurantes, cafeterías, bares, parques y más se pueden encontrar en bicicleta o dando un paseo por las calles bordeadas de palmeras.

Disfrute de la música en vivo bajo las estrellas en el Miami Beach Bandshell y visite el mercado de agricultores centrado alrededor de la histórica Fuente de Normandía. Con todo esto a la vuelta de la esquina, el vecindario también está fácilmente conectado con el centro de Miami, Bal Harbour y todo lo demás.

72 Park ofrece una oportunidad excepcional para poseer una pieza notable del paisaje en evolución de Miami Beach. Sumérgete en el encanto de esta ubicación privilegiada, que redefine la vida

"En la playa".





AMENIDADES DEL EDIFICIO

- Piscina estilo centro turístico que se extiende más de 150 pies, acompañada de cabañas junto a la piscina.
- Servicio de toallas y cócteles en el bar al aire libre de la terraza de la piscina, ubicado bajo una encantadora pérgola
- Exuberante paisaje en casi un acre completo de la terraza de la piscina del 5to piso y espacio de servicios.
- Restaurante, bar y salón en el 5to piso (con asientos en el interior y al aire libre), brindando servicio a la piscina y ofreciendo cautivadoras vistas al mar.
- Sala de trabajo conjunto 24/7, equipada con cápsulas privadas, para satisfacer sus necesidades profesionales.
- Acceso inalámbrico a Internet de fibra óptica de alta velocidad en todas las áreas comunes y residencias.
- Distintivo vidrio cerrado de doble altura, totalmente equipado, gimnasio de última generación con equipos Technogym y vistas a la piscina y los jardines.
- Relájese en la sala de yoga o en la terraza al aire libre, lo que le permitirá sumergirse en la tranquilidad.
- La sala de juegos para niños garantiza una diversión sin fin para los más pequeños.
- Área de parrilla privada al aire libre con pérgola rodeada de paisajes tropicales, perfecta para reuniones grupales íntimas.
- Utilice el servicio de transporte en carrito de golf para visitas rápidas a la playa. Pida prestados juguetes de playa para niños, tablas de boogie, tablas de remo, bicicletas y más.
- Solo para propietarios, una azotea privada cuenta con una terraza con vistas panorámicas de la playa, el océano, el parque, el horizonte intracostero de Miami, así como áreas de comedor y parrillas. Relájese en las áreas de asientos privadas, disfrute de las noches de películas al aire libre o reúnanse alrededor del gran televisor para eventos deportivos.
- Incluso tus amigos peludos son atendidos con un spa para mascotas a nivel del suelo.



SENCILLO
SOFISTICADO
PLAYERO
CASUAL
EN SUS TÉRMINOS...



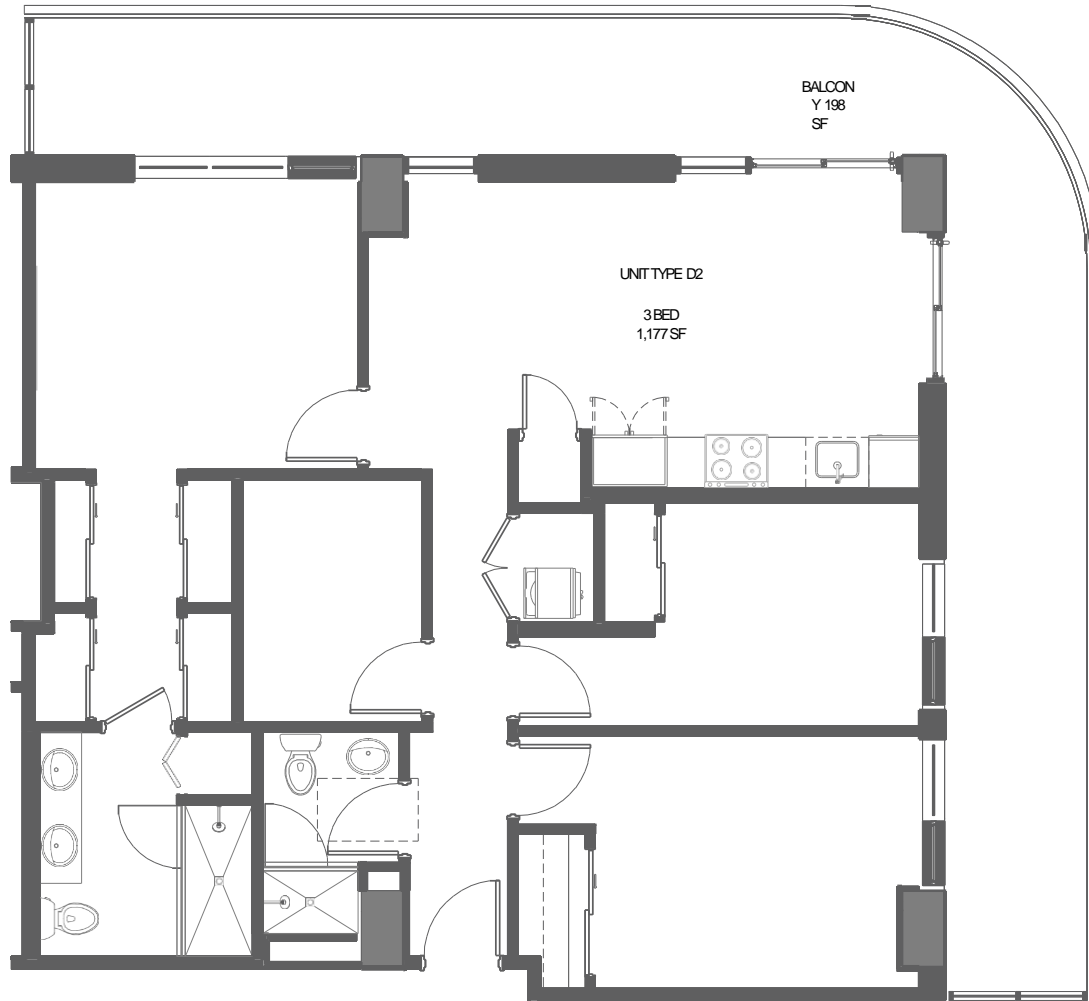
LAS RESIDENCIAS

- Diseños modernos y abiertos de 470 a 1,177 pies cuadrados
- Ofrece una selección de residencias Jr-1, 1, 2 y 3 habitaciones, cada una diseñada para superar sus expectativas.
- Todas las residencias ofrecen opciones completamente amuebladas, asegurando que cada detalle esté curado a la perfección.
- Vistas panorámicas del océano, parques, la intracosta y el horizonte de Miami desde su propio santuario privado.
- Salga al amplio balcón privado de 6 1/2 pies de profundidad para sentir la brisa y disfrutar de los impresionantes alrededores.
- Las alturas del techo varían de 9 a 10 pies, creando una atmósfera de grandeza y amplitud.
- Las puertas corredizas de vidrio del piso al techo y el vidrio resistente a los impactos en todas las residencias permiten una gran cantidad de luz natural al tiempo que proporcionan una conexión perfecta con el mundo exterior.
- Tecnología avanzada de construcción inteligente que ofrece Internet inalámbrico de fibra óptica de alta velocidad, HDTV, entrada sin llave a todas las residencias con SALTO y controles de acceso inteligentes, y líneas telefónicas / de datos.
- Sistema de aire acondicionado y calefacción central con control individual y energéticamente eficiente.



72 PARK MIAMI BEACH

Planos de pisos



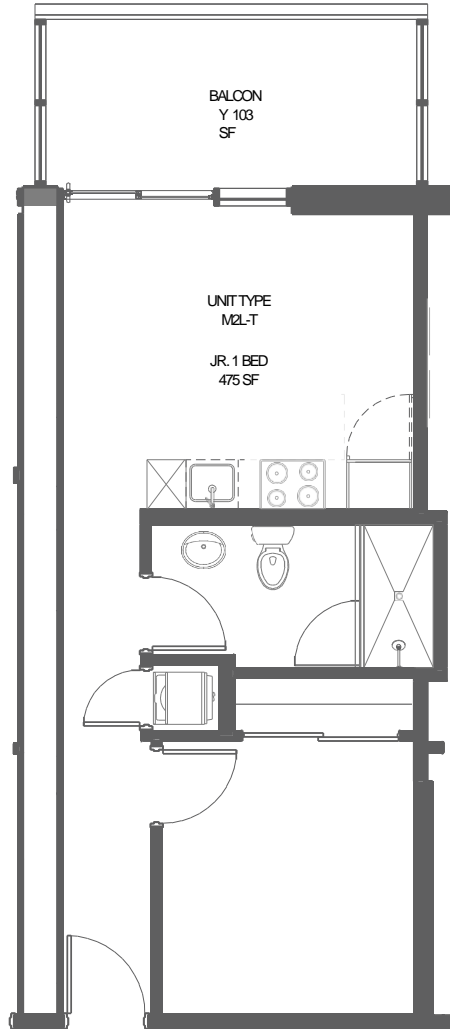
ORAL REPRESENTATIONS CANNOT BE RELIED UPON AS CORRECTLY STATING THE REPRESENTATIONS OF THE DEVELOPER. FOR CORRECT REPRESENTATIONS, MAKE REFERENCE TO THIS BROCHURE AND TO THE DOCUMENTS REQUIRED BY SECTION 718.503, FLORIDA STATUTES, TO BE FURNISHED BY A DEVELOPER TO A BUYER OR LESSEE.

ⓘ This is not intended to be an offer to sell, or solicitation to buy, condominium units to residents of any jurisdiction where prohibited by law, and your eligibility for purchase will depend upon your state of residency. The offering is made only by the prospectus for the condominium and no statement should be relied upon if not made in the prospectus. Stated interior square footage is measured to the exterior face of exterior walls and to the centerline of interior demising walls or to the exterior face of walls adjoining corridors or other common elements or shared facilities without excluding areas that may be occupied by columns or other structural components. This method of measurement varies from, and is larger than, the dimensions that would be determined by using the description and the definition of the Unit set forth in the Declaration (which generally only includes the interior airspace between the perimeter walls and excludes structural components). For reference, the area of the unit, determined in accordance with the unit boundaries set forth in the Declaration is set forth in Exhibit "3" to the Declaration. All dimensions are approximate and may vary with actual construction.



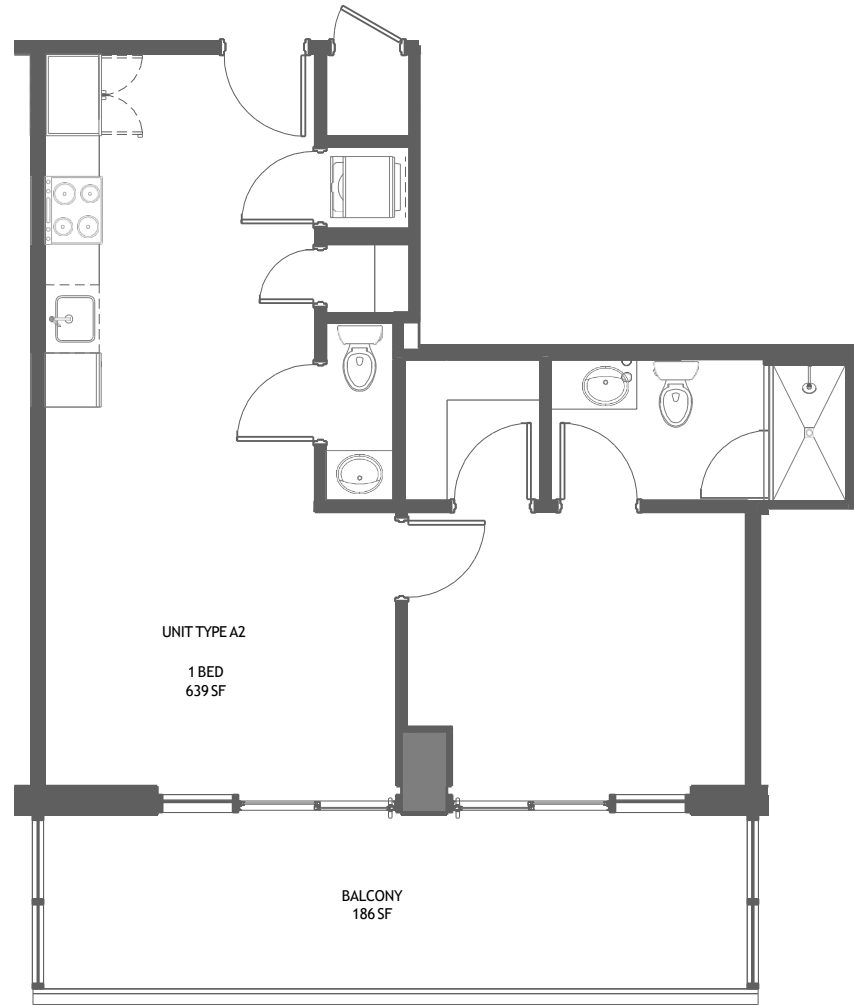
ORAL REPRESENTATIONS CANNOT BE RELIED UPON AS CORRECTLY STATING THE REPRESENTATIONS OF THE DEVELOPER. FOR CORRECT REPRESENTATIONS, MAKE REFERENCE TO THIS BROCHURE AND TO THE DOCUMENTS REQUIRED BY SECTION 718.503, FLORIDA STATUTES, TO BE FURNISHED BY A DEVELOPER TO A BUYER OR LESSEE.

Ⓜ This is not intended to be an offer to sell, or solicitation to buy, condominium units to residents of any jurisdiction where prohibited by law, and your eligibility for purchase will depend upon your state of residency. The offering is made only by the prospectus for the condominium and no statement should be relied upon if not made in the prospectus. Stated interior square footage is measured to the exterior face of exterior walls and to the centerline of interior demising walls or to the exterior face of walls adjoining corridors or other common elements or shared facilities without excluding areas that may be occupied by columns or other structural components. This method of measurement varies from, and is larger than, the dimensions that would be determined by using the description and the definition of the Unit set forth in the Declaration (which generally only includes the interior airspace between the perimeter walls and excludes structural components). For reference, the area of the unit, determined in accordance with the unit boundaries set forth in the Declaration is set forth in Exhibit "3" to the Declaration. All dimensions are approximate and may vary with actual construction.



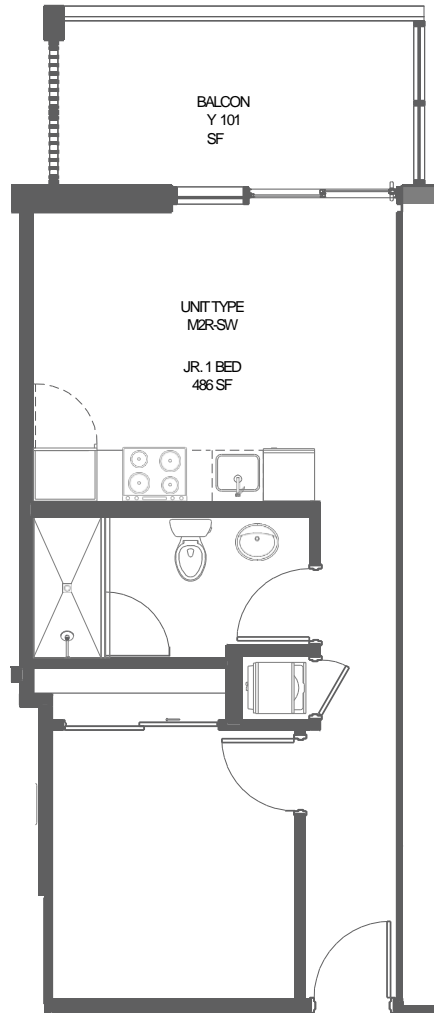
ORAL REPRESENTATIONS CANNOT BE RELIED UPON AS CORRECTLY STATING THE REPRESENTATIONS OF THE DEVELOPER. FOR CORRECT REPRESENTATIONS, MAKE REFERENCE TO THIS BROCHURE AND TO THE DOCUMENTS REQUIRED BY SECTION 718.503, FLORIDA STATUTES, TO BE FURNISHED BY A DEVELOPER TO A BUYER OR LESSEE.

Ⓜ This is not intended to be an offer to sell, or solicitation to buy, condominium units to residents of any jurisdiction where prohibited by law, and your eligibility for purchase will depend upon your state of residency. The offering is made only by the prospectus for the condominium and no statement should be relied upon if not made in the prospectus. Stated interior square footage is measured to the exterior face of exterior walls and to the centerline of interior demising walls or to the exterior face of walls adjoining corridors or other common elements or shared facilities without excluding areas that may be occupied by columns or other structural components. This method of measurement varies from, and is larger than, the dimensions that would be determined by using the description and the definition of the Unit set forth in the Declaration (which generally only includes the interior airspace between the perimeter walls and excludes structural components). For reference, the area of the unit, determined in accordance with the unit boundaries set forth in the Declaration is set forth in Exhibit "3" to the Declaration. All dimensions are approximate and may vary with actual construction.



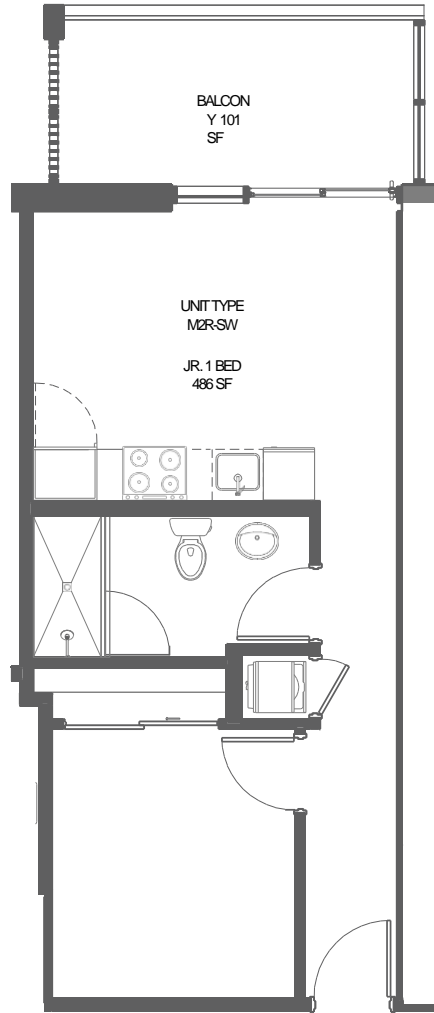
ORAL REPRESENTATIONS CANNOT BE RELIED UPON AS CORRECTLY STATING THE REPRESENTATIONS OF THE DEVELOPER. FOR CORRECT REPRESENTATIONS, MAKE REFERENCE TO THIS BROCHURE AND TO THE DOCUMENTS REQUIRED BY SECTION 718.503, FLORIDA STATUTES, TO BE FURNISHED BY A DEVELOPER TO A BUYER OR LESSEE.

Ⓜ This is not intended to be an offer to sell, or solicitation to buy, condominium units to residents of any jurisdiction where prohibited by law, and your eligibility for purchase will depend upon your state of residency. The offering is made only by the prospectus for the condominium and no statement should be relied upon if not made in the prospectus. Stated interior square footage is measured to the exterior face of exterior walls and to the centerline of interior demising walls or to the exterior face of walls adjoining corridors or other common elements or shared facilities without excluding areas that may be occupied by columns or other structural components. This method of measurement varies from, and is larger than, the dimensions that would be determined by using the description and the definition of the Unit set forth in the Declaration (which generally only includes the interior airspace between the perimeter walls and excludes structural components). For reference, the area of the unit, determined in accordance with the unit boundaries set forth in the Declaration is set forth in Exhibit "3" to the Declaration. All dimensions are approximate and may vary with actual construction.



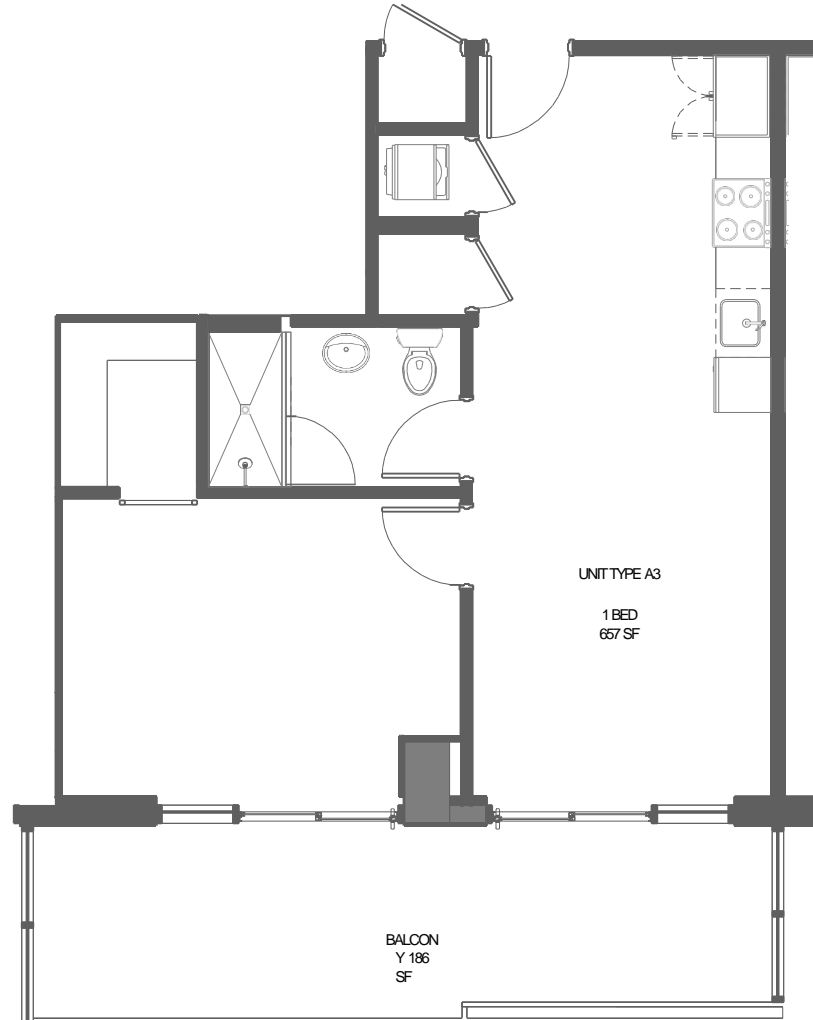
ORAL REPRESENTATIONS CANNOT BE RELIED UPON AS CORRECTLY STATING THE REPRESENTATIONS OF THE DEVELOPER. FOR CORRECT REPRESENTATIONS, MAKE REFERENCE TO THIS BROCHURE AND TO THE DOCUMENTS REQUIRED BY SECTION 718.503, FLORIDA STATUTES, TO BE FURNISHED BY A DEVELOPER TO A BUYER OR LESSEE.

Ⓜ This is not intended to be an offer to sell, or solicitation to buy, condominium units to residents of any jurisdiction where prohibited by law, and your eligibility for purchase will depend upon your state of residency. The offering is made only by the prospectus for the condominium and no statement should be relied upon if not made in the prospectus. Stated interior square footage is measured to the exterior face of exterior walls and to the centerline of interior demising walls or to the exterior face of walls adjoining corridors or other common elements or shared facilities without excluding areas that may be occupied by columns or other structural components. This method of measurement varies from, and is larger than, the dimensions that would be determined by using the description and the definition of the Unit set forth in the Declaration (which generally only includes the interior airspace between the perimeter walls and excludes structural components). For reference, the area of the unit, determined in accordance with the unit boundaries set forth in the Declaration is set forth in Exhibit "3" to the Declaration. All dimensions are approximate and may vary with actual construction.



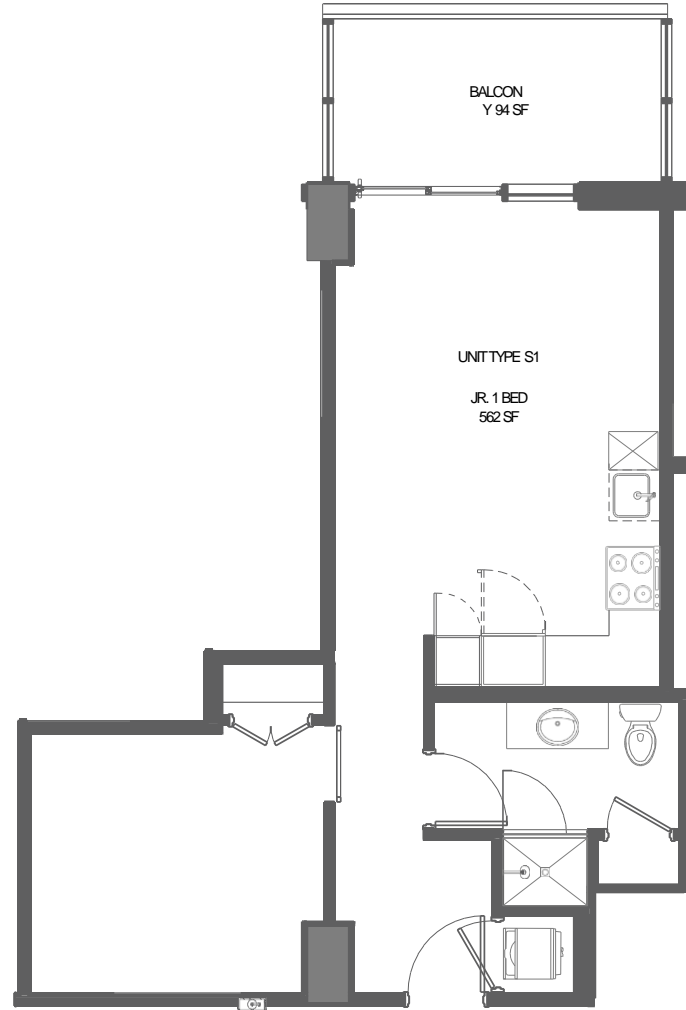
ORAL REPRESENTATIONS CANNOT BE RELIED UPON AS CORRECTLY STATING THE REPRESENTATIONS OF THE DEVELOPER. FOR CORRECT REPRESENTATIONS, MAKE REFERENCE TO THIS BROCHURE AND TO THE DOCUMENTS REQUIRED BY SECTION 718.503, FLORIDA STATUTES, TO BE FURNISHED BY A DEVELOPER TO A BUYER OR LESSEE.

Ⓜ This is not intended to be an offer to sell, or solicitation to buy, condominium units to residents of any jurisdiction where prohibited by law, and your eligibility for purchase will depend upon your state of residency. The offering is made only by the prospectus for the condominium and no statement should be relied upon if not made in the prospectus. Stated interior square footage is measured to the exterior face of exterior walls and to the centerline of interior demising walls or to the exterior face of walls adjoining corridors or other common elements or shared facilities without excluding areas that may be occupied by columns or other structural components. This method of measurement varies from, and is larger than, the dimensions that would be determined by using the description and the definition of the Unit set forth in the Declaration (which generally only includes the interior airspace between the perimeter walls and excludes structural components). For reference, the area of the unit, determined in accordance with the unit boundaries set forth in the Declaration is set forth in Exhibit "3" to the Declaration. All dimensions are approximate and may vary with actual construction.



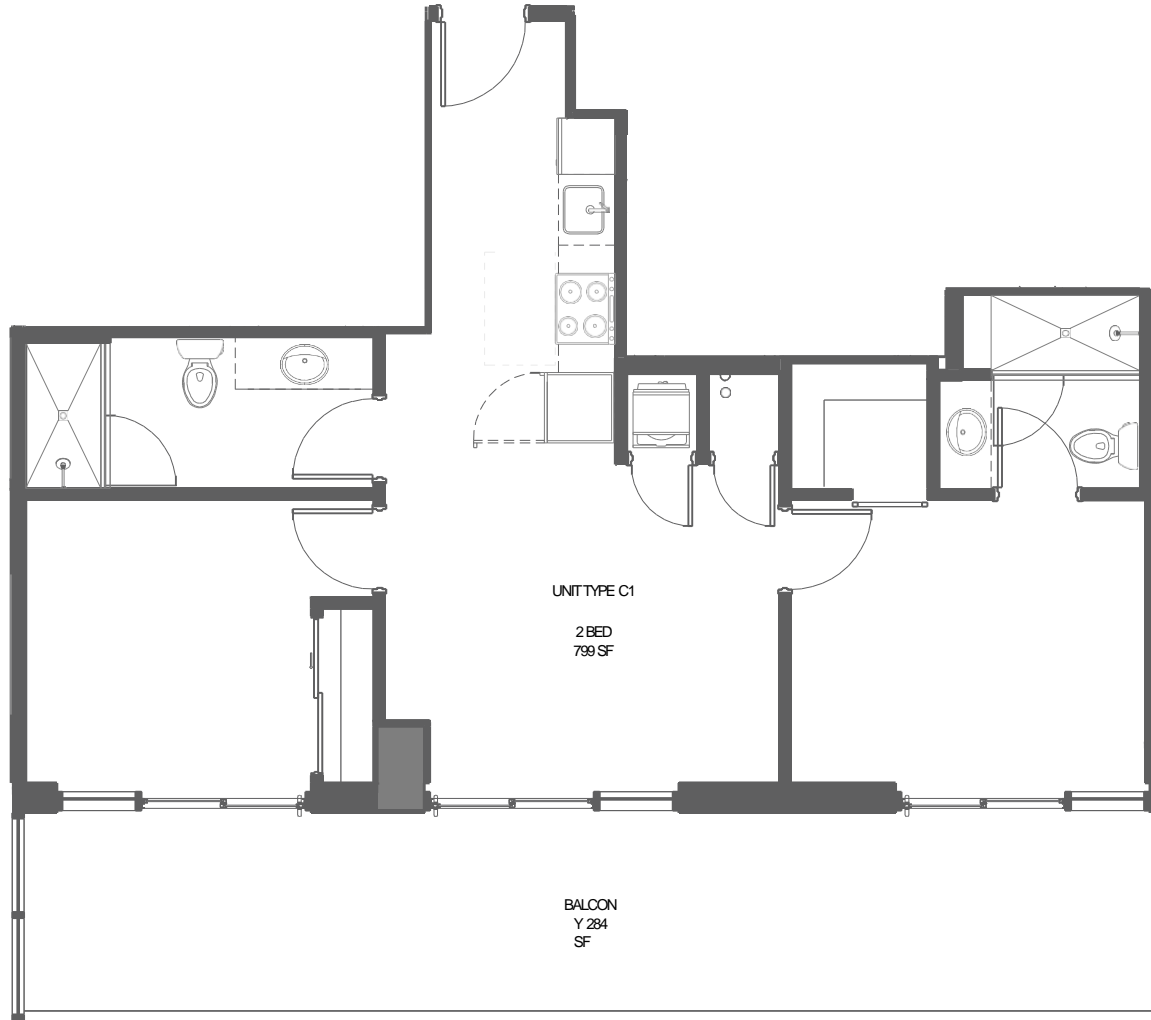
ORAL REPRESENTATIONS CANNOT BE RELIED UPON AS CORRECTLY STATING THE REPRESENTATIONS OF THE DEVELOPER. FOR CORRECT REPRESENTATIONS, MAKE REFERENCE TO THIS BROCHURE AND TO THE DOCUMENTS REQUIRED BY SECTION 718.503, FLORIDA STATUTES, TO BE FURNISHED BY A DEVELOPER TO A BUYER OR LESSEE.

Ⓜ This is not intended to be an offer to sell, or solicitation to buy, condominium units to residents of any jurisdiction where prohibited by law, and your eligibility for purchase will depend upon your state of residency. The offering is made only by the prospectus for the condominium and no statement should be relied upon if not made in the prospectus. Stated interior square footage is measured to the exterior face of exterior walls and to the centerline of interior demising walls or to the exterior face of walls adjoining corridors or other common elements or shared facilities without excluding areas that may be occupied by columns or other structural components. This method of measurement varies from, and is larger than, the dimensions that would be determined by using the description and the definition of the Unit set forth in the Declaration (which generally only includes the interior airspace between the perimeter walls and excludes structural components). For reference, the area of the unit, determined in accordance with the unit boundaries set forth in the Declaration is set forth in Exhibit "3" to the Declaration. All dimensions are approximate and may vary with actual construction.



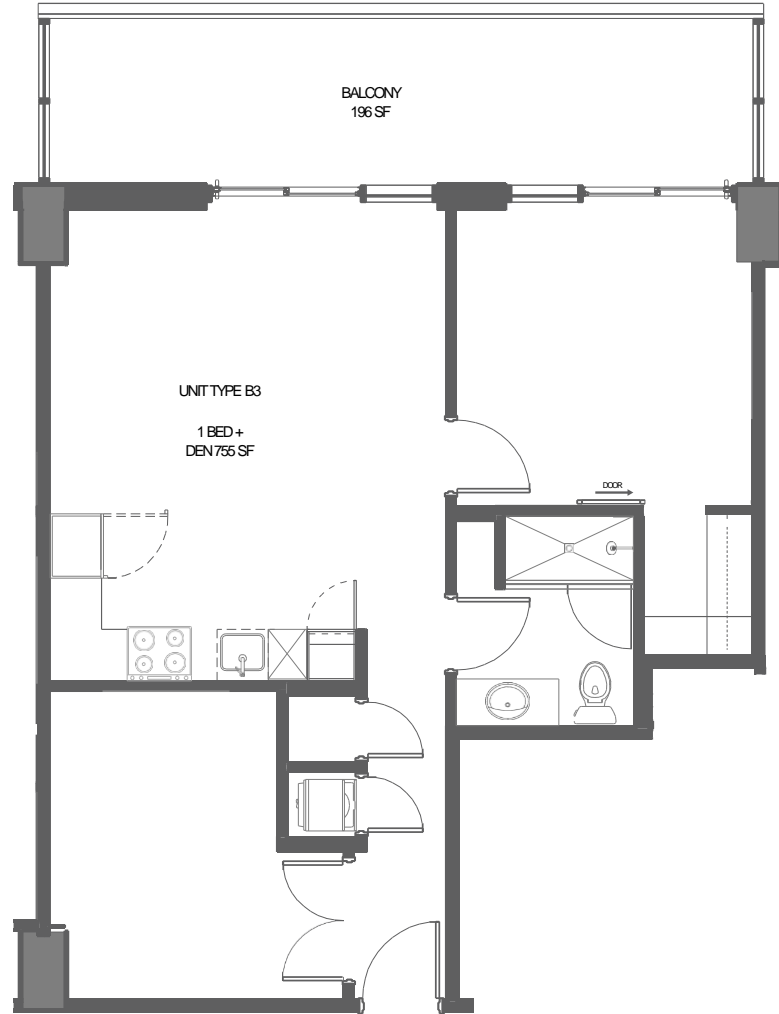
ORAL REPRESENTATIONS CANNOT BE RELIED UPON AS CORRECTLY STATING THE REPRESENTATIONS OF THE DEVELOPER. FOR CORRECT REPRESENTATIONS, MAKE REFERENCE TO THIS BROCHURE AND TO THE DOCUMENTS REQUIRED BY SECTION 718.503, FLORIDA STATUTES, TO BE FURNISHED BY A DEVELOPER TO A BUYER OR LESSEE.

Ⓜ This is not intended to be an offer to sell, or solicitation to buy, condominium units to residents of any jurisdiction where prohibited by law, and your eligibility for purchase will depend upon your state of residency. The offering is made only by the prospectus for the condominium and no statement should be relied upon if not made in the prospectus. Stated interior square footage is measured to the exterior face of exterior walls and to the centerline of interior demising walls or to the exterior face of walls adjoining corridors or other common elements or shared facilities without excluding areas that may be occupied by columns or other structural components. This method of measurement varies from, and is larger than, the dimensions that would be determined by using the description and the definition of the Unit set forth in the Declaration (which generally only includes the interior airspace between the perimeter walls and excludes structural components). For reference, the area of the unit, determined in accordance with the unit boundaries set forth in the Declaration is set forth in Exhibit "3" to the Declaration. All dimensions are approximate and may vary with actual construction.



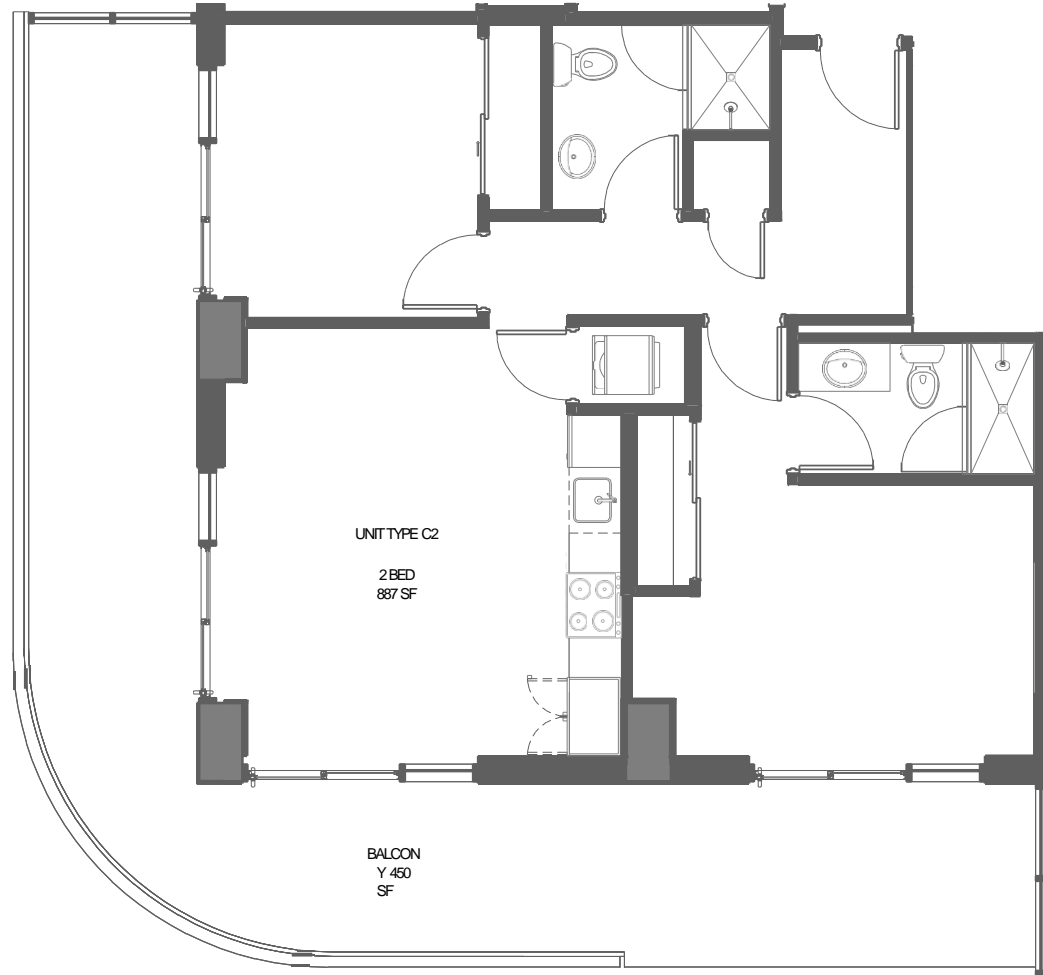
ORAL REPRESENTATIONS CANNOT BE RELIED UPON AS CORRECTLY STATING THE REPRESENTATIONS OF THE DEVELOPER. FOR CORRECT REPRESENTATIONS, MAKE REFERENCE TO THIS BROCHURE AND TO THE DOCUMENTS REQUIRED BY SECTION 718.503, FLORIDA STATUTES, TO BE FURNISHED BY A DEVELOPER TO A BUYER OR LESSEE.

Ⓜ This is not intended to be an offer to sell, or solicitation to buy, condominium units to residents of any jurisdiction where prohibited by law, and your eligibility for purchase will depend upon your state of residency. The offering is made only by the prospectus for the condominium and no statement should be relied upon if not made in the prospectus. Stated interior square footage is measured to the exterior face of exterior walls and to the centerline of interior demising walls or to the exterior face of walls adjoining corridors or other common elements or shared facilities without excluding areas that may be occupied by columns or other structural components. This method of measurement varies from, and is larger than, the dimensions that would be determined by using the description and the definition of the Unit set forth in the Declaration (which generally only includes the interior airspace between the perimeter walls and excludes structural components). For reference, the area of the unit, determined in accordance with the unit boundaries set forth in the Declaration is set forth in Exhibit "3" to the Declaration. All dimensions are approximate and may vary with actual construction.



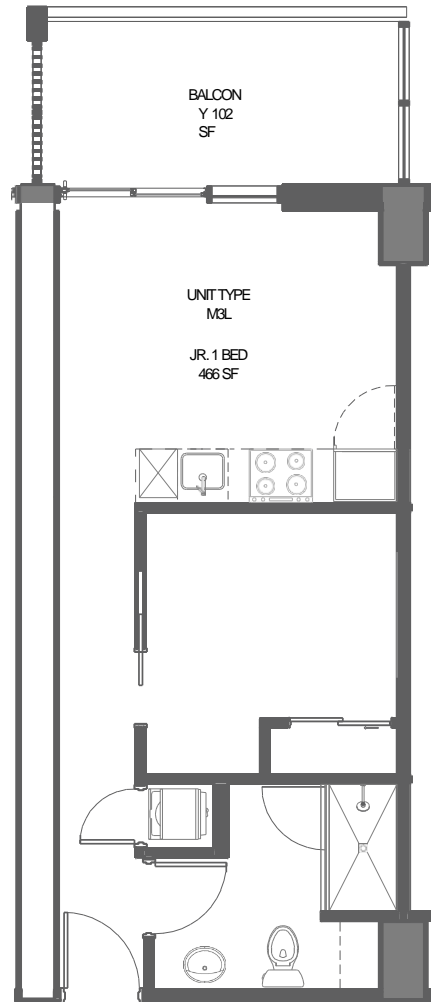
ORAL REPRESENTATIONS CANNOT BE RELIED UPON AS CORRECTLY STATING THE REPRESENTATIONS OF THE DEVELOPER. FOR CORRECT REPRESENTATIONS, MAKE REFERENCE TO THIS BROCHURE AND TO THE DOCUMENTS REQUIRED BY SECTION 718.503, FLORIDA STATUTES, TO BE FURNISHED BY A DEVELOPER TO A BUYER OR LESSEE.

Ⓜ This is not intended to be an offer to sell, or solicitation to buy, condominium units to residents of any jurisdiction where prohibited by law, and your eligibility for purchase will depend upon your state of residency. The offering is made only by the prospectus for the condominium and no statement should be relied upon if not made in the prospectus. Stated interior square footage is measured to the exterior face of exterior walls and to the centerline of interior demising walls or to the exterior face of walls adjoining corridors or other common elements or shared facilities without excluding areas that may be occupied by columns or other structural components. This method of measurement varies from, and is larger than, the dimensions that would be determined by using the description and the definition of the Unit set forth in the Declaration (which generally only includes the interior airspace between the perimeter walls and excludes structural components). For reference, the area of the unit, determined in accordance with the unit boundaries set forth in the Declaration is set forth in Exhibit "3" to the Declaration. All dimensions are approximate and may vary with actual construction.



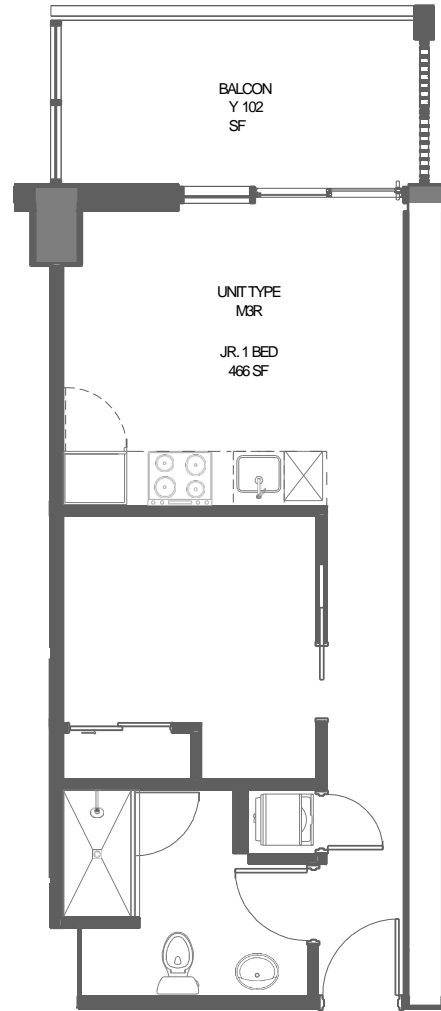
ORAL REPRESENTATIONS CANNOT BE RELIED UPON AS CORRECTLY STATING THE REPRESENTATIONS OF THE DEVELOPER. FOR CORRECT REPRESENTATIONS, MAKE REFERENCE TO THIS BROCHURE AND TO THE DOCUMENTS REQUIRED BY SECTION 718.503, FLORIDA STATUTES, TO BE FURNISHED BY A DEVELOPER TO A BUYER OR LESSEE.

Ⓜ This is not intended to be an offer to sell, or solicitation to buy, condominium units to residents of any jurisdiction where prohibited by law, and your eligibility for purchase will depend upon your state of residency. The offering is made only by the prospectus for the condominium and no statement should be relied upon if not made in the prospectus. Stated interior square footage is measured to the exterior face of exterior walls and to the centerline of interior demising walls or to the exterior face of walls adjoining corridors or other common elements or shared facilities without excluding areas that may be occupied by columns or other structural components. This method of measurement varies from, and is larger than, the dimensions that would be determined by using the description and the definition of the Unit set forth in the Declaration (which generally only includes the interior airspace between the perimeter walls and excludes structural components). For reference, the area of the unit, determined in accordance with the unit boundaries set forth in the Declaration is set forth in Exhibit "3" to the Declaration. All dimensions are approximate and may vary with actual construction.



ORAL REPRESENTATIONS CANNOT BE RELIED UPON AS CORRECTLY STATING THE REPRESENTATIONS OF THE DEVELOPER. FOR CORRECT REPRESENTATIONS, MAKE REFERENCE TO THIS BROCHURE AND TO THE DOCUMENTS REQUIRED BY SECTION 718.503, FLORIDA STATUTES, TO BE FURNISHED BY A DEVELOPER TO A BUYER OR LESSEE.

Ⓜ This is not intended to be an offer to sell, or solicitation to buy, condominium units to residents of any jurisdiction where prohibited by law, and your eligibility for purchase will depend upon your state of residency. The offering is made only by the prospectus for the condominium and no statement should be relied upon if not made in the prospectus. Stated interior square footage is measured to the exterior face of exterior walls and to the centerline of interior demising walls or to the exterior face of walls adjoining corridors or other common elements or shared facilities without excluding areas that may be occupied by columns or other structural components. This method of measurement varies from, and is larger than, the dimensions that would be determined by using the description and the definition of the Unit set forth in the Declaration (which generally only includes the interior airspace between the perimeter walls and excludes structural components). For reference, the area of the unit, determined in accordance with the unit boundaries set forth in the Declaration is set forth in Exhibit "9" to the Declaration. All dimensions are approximate and may vary with actual construction.



ORAL REPRESENTATIONS CANNOT BE RELIED UPON AS CORRECTLY STATING THE REPRESENTATIONS OF THE DEVELOPER. FOR CORRECT REPRESENTATIONS, MAKE REFERENCE TO THIS BROCHURE AND TO THE DOCUMENTS REQUIRED BY SECTION 718.503, FLORIDA STATUTES, TO BE FURNISHED BY A DEVELOPER TO A BUYER OR LESSEE.

Ⓜ This is not intended to be an offer to sell, or solicitation to buy, condominium units to residents of any jurisdiction where prohibited by law, and your eligibility for purchase will depend upon your state of residency. The offering is made only by the prospectus for the condominium and no statement should be relied upon if not made in the prospectus. Stated interior square footage is measured to the exterior face of exterior walls and to the centerline of interior demising walls or to the exterior face of walls adjoining corridors or other common elements or shared facilities without excluding areas that may be occupied by columns or other structural components. This method of measurement varies from, and is larger than, the dimensions that would be determined by using the description and the definition of the Unit set forth in the Declaration (which generally only includes the interior airspace between the perimeter walls and excludes structural components). For reference, the area of the unit, determined in accordance with the unit boundaries set forth in the Declaration is set forth in Exhibit "3" to the Declaration. All dimensions are approximate and may vary with actual construction.

72 PARK MIAMI BEACH

THE TEAM

El Equipo

Desarrollado por Lefferts

Fundada en la ciudad de Nueva York y con más de veinte años de experiencia en la industria, Lefferts se erige como una fuerza inigualable en el desarrollo inmobiliario de propiedad privada. Con un compromiso inquebrantable con la excelencia y la sostenibilidad, Lefferts crea extraordinarias propiedades residenciales y comerciales que redibujan los límites de la innovación, la calidad y la vida inclusiva. Su cartera incluye edificios de condominios de lujo, desarrollos dinámicos de uso mixto y espacios comerciales de alta gama en Nueva York y el sur de Florida.



Arquitectura por Built Form

Built Form, LLC es una firma de arquitectura de servicio completo con oficinas ubicadas en Chicago, Carolina del Norte y Miami. Durante los últimos 16 años, los directores de Built Form han construido una práctica que combina la creatividad.

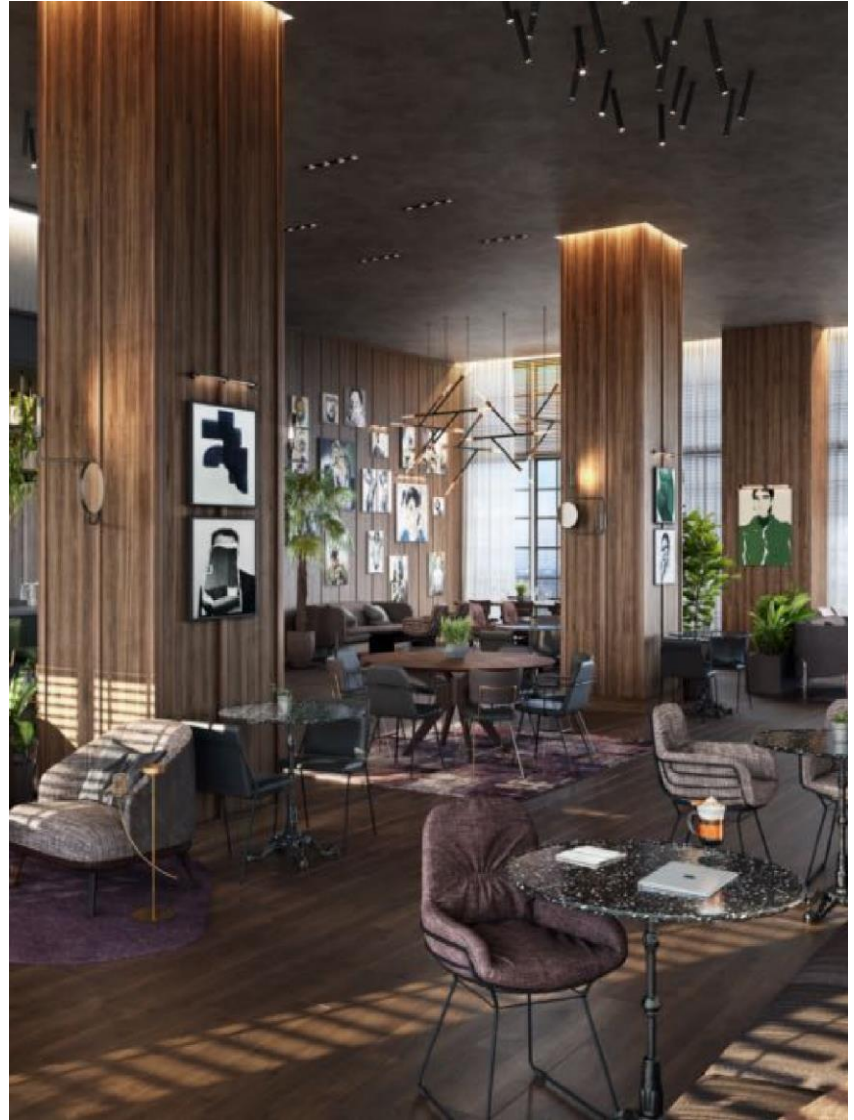
energías de una firma de diseño boutique con las capacidades técnicas de una empresa más grande para crear una organización que ha ejecutado proyectos de diversa escala, tipo y complejidad. Nuestros tipos de proyectos incluyen proyectos comunitarios sin fines de lucro, minoristas, comerciales, hoteles y una gama completa de tipos de viviendas multifamiliares, incluidas las de uso mixto, convivencias, históricas y financiadas por el gobierno.

La firma se basa en un enfoque que incorpora una investigación intensiva sobre los detalles de cada proyecto. Además de los parámetros de diseño comunes, como los objetivos del cliente, el programa de construcción y las restricciones del sitio, la investigación del proyecto proporciona un marco que guía aún más el diseño de cada proyecto, lo que resulta en la mejor solución arquitectónica posible.



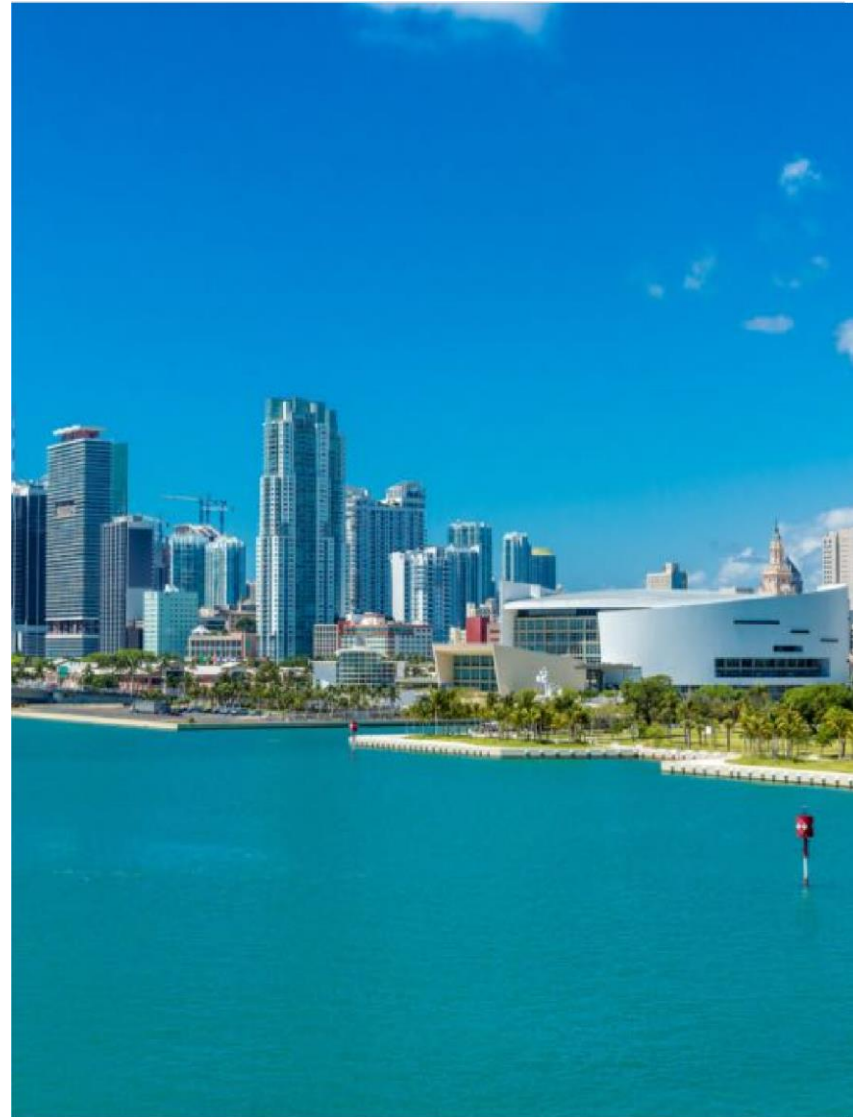
Diseño de interiores por Urban Robot Associates

Urban Robot Associates es un colectivo de diseño de servicio completo que se especializa en arquitectura y diseño de interiores. El equipo colabora para desarrollar un enfoque multidisciplinario para todos los proyectos con el fin de generar una visión única y crear experiencias significativas, memorables y funcionales. Los diversos antecedentes de diseño de los miembros del equipo conducen a narrativas únicas que son fieles al concepto y adaptadas a cada proyecto.



Ventas y Marketing por Cervera Real Estate

Cervera Real Estate es una empresa inmobiliaria familiar con sede en el sur de la Florida. Su transformación de más de medio siglo del paisaje del sur de la Florida ha demostrado que el servicio al cliente personalizado garantiza la satisfacción de los clientes. Una red internacional de gran alcance e inigualable y décadas en el terreno han cultivado relaciones únicas y duraderas con desarrolladores, arquitectos, inversores y empresas inmobiliarias que son cruciales para el éxito de clientes y socios.



72 Park

MIAMI BEACH



LEFFERTS

ORAL REPRESENTATIONS CANNOT BE RELIED UPON AS CORRECTLY STATING THE REPRESENTATIONS OF THE DEVELOPER. FOR CORRECT REPRESENTATIONS, MAKE REFERENCE TO THIS BROCHURE AND TO THE DOCUMENTS REQUIRED BY SECTION 718.503, FLORIDA STATUTES, TO BE FURNISHED BY A DEVELOPER TO A BUYER OR LESSEE.
This is not intended to be an offer to sell, or solicitation to buy, condominium units to residents of any jurisdiction where prohibited by law, and your eligibility for purchase will depend upon your state of residency. The offering is made only by the prospectus for the condominium and no statement should be relied upon if not made in the prospectus. Stated interior square footage is measured to the exterior face of exterior walls and to the centerline of interior demising walls or to the exterior face of walls adjoining corridors or other common elements or shared facilities without excluding areas that may be occupied by columns or other structural components. This method of measurement varies from, and is larger than, the dimensions that would be determined by using the description and the definition of the Unit set forth in the Declaration (which generally only includes the interior airspace between the perimeter walls and excludes structural components). For reference, the area of the unit, determined in accordance with the unit boundaries set forth in the Declaration is set forth in Exhibit "3" to the Declaration. All dimensions are approximate and may vary with actual construction.