

Casa Bella

RESIDENCES

by **B&BITALIA**

The Art of Italian Living Curated by Piero Lissoni

“We’re creating a truly iconic building, by bringing together the world’s most iconic names in a collaboration like no other. We wanted to create a lifestyle: the refined style of Italian living in an urban setting—with absolutely incredible water views from every residence.”

Jon Paul Pérez
Presidente, The Related Group

*Welcome to the height of sophisticated
Italian living—in the heart of Miami.
CasaBella Residences by B&B
Italia—a home, and a destination,
created to bring the exquisite
experience of Italian design to life.*



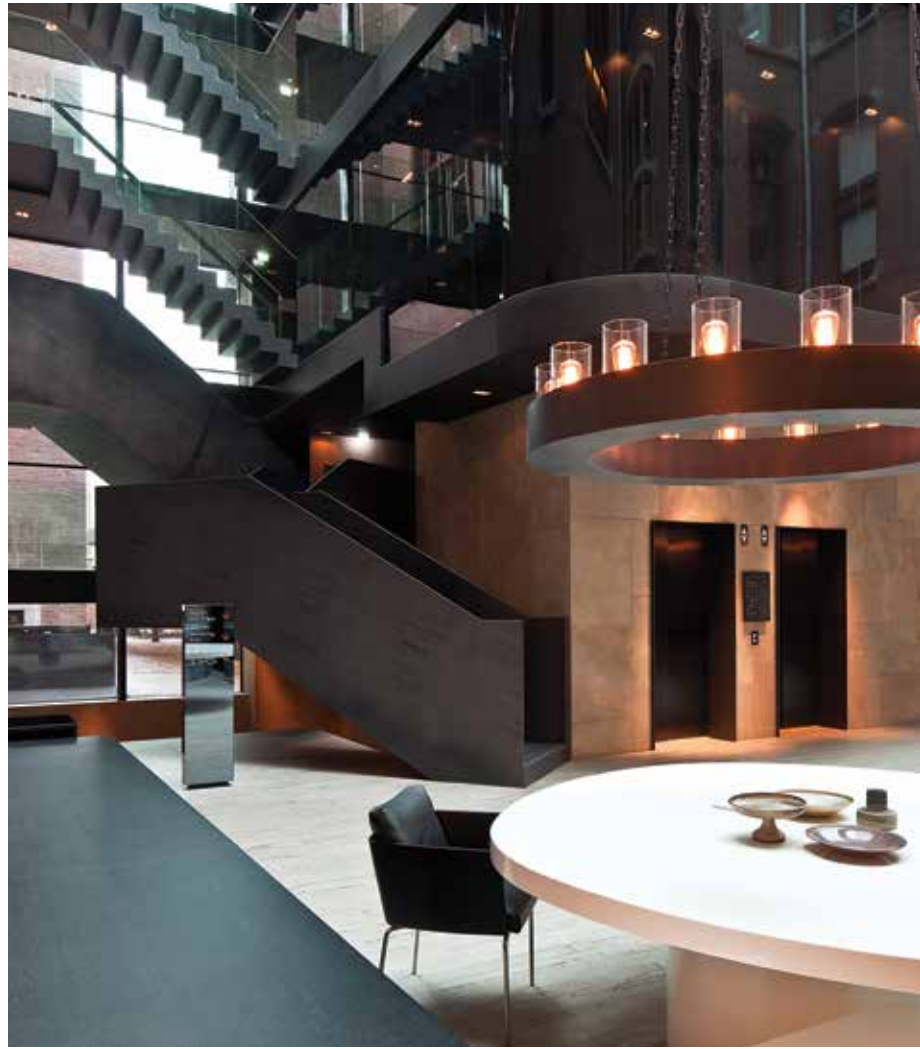


CasaBella Residences by B&B Italia is a collaboration with the most celebrated Italian artists to curate your home with select masterworks from the B&B Italia collections—all brilliantly imagined by the best creative minds and personally customized by world-renowned architect Piero Lissoni.



“To design, you must first have an intimate relationship with a place. It is a romance.”

PIERO LISSONI
ARCHITECT AND DESIGNER



Conservatorium Hotel, Amsterdam



Grand Park Hotel, Rovinj

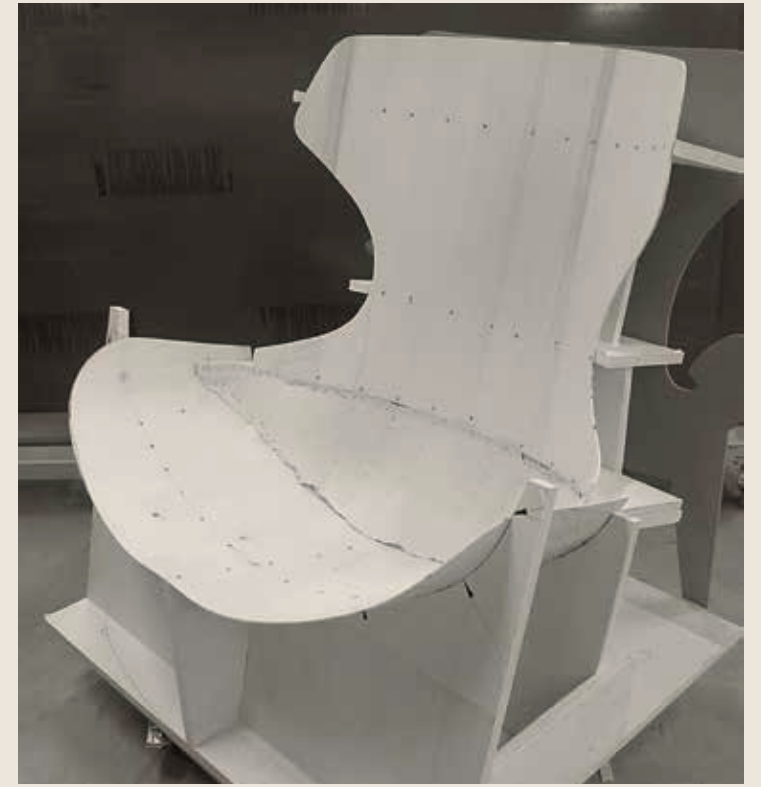
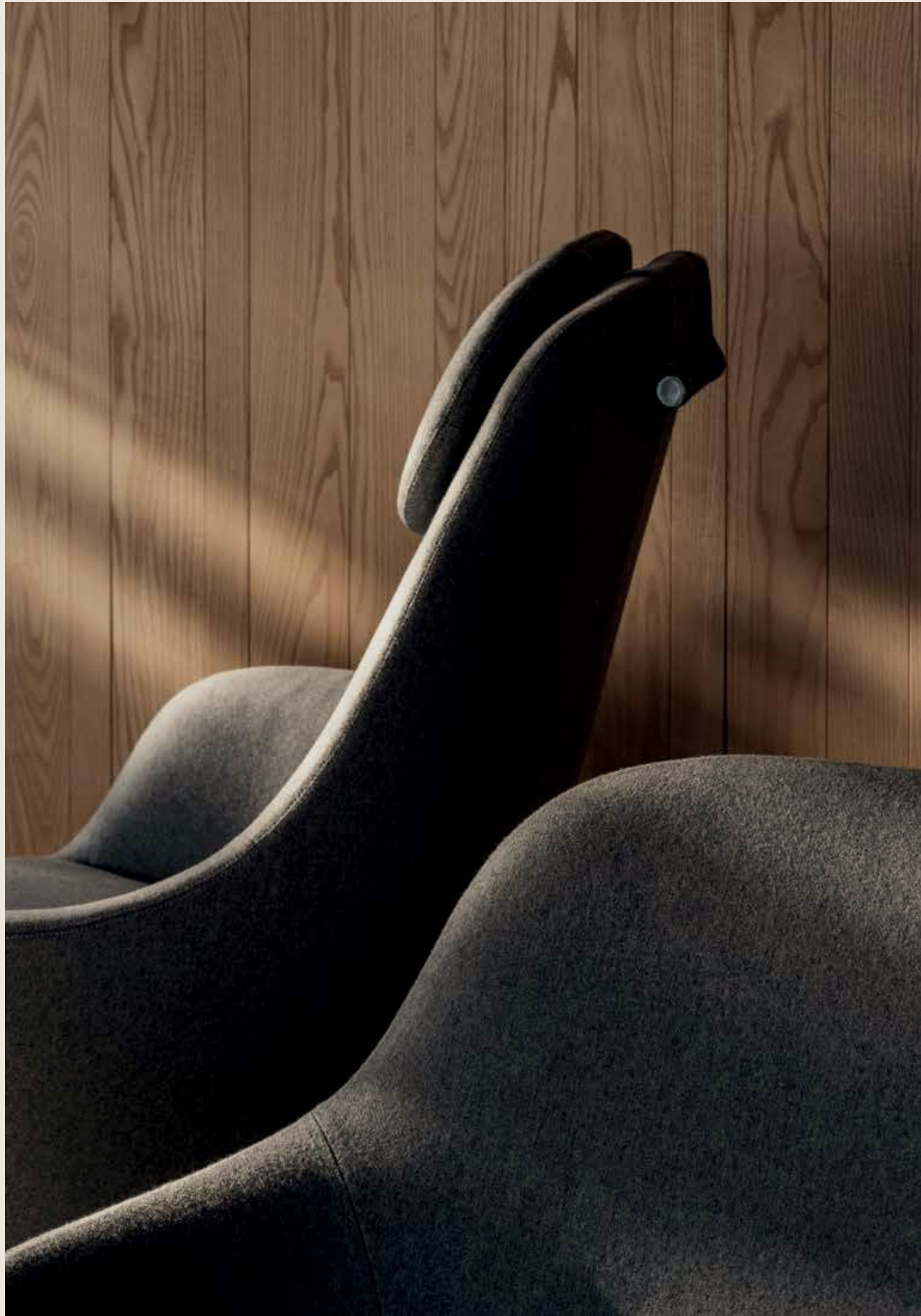
B&B Italia's visionary work has defined iconic Italian design for over 50 years. The brand's global reputation for innovation and master craftsmanship gives it a constant influential presence in the world of art, architecture, culture, and design. The B&B Italia team comprises an international network of the most celebrated creative minds in the industry today. Our unprecedented collaboration promises to set extraordinary new standards for the art of Italian living.





“B&B Italia continues to resonate because of the way it evolves to stay modern, admirably combining innovation, technology, and taste while also staying true to its heritage. We continue to partner with some of the leading architects and designers to bring these new collections to life.”

FRANCESCO FARINA
CEO, B&B ITALIA USA



A balance of the best creative minds, unparalleled research and development, industrial know-how, and fine Italian workmanship.



*A serene aesthetic, exquisite blend
of outdoors and in, thoughtfully
created with exclusive materials
and proprietary technique.*

*Welcome to a lifestyle where
the world is your runway.*



Miami's most exclusive new address, in the heart of the Arts & Cultural District—global epicenter of arts, dining, finance, culture, and entertainment. Located minutes from world-renowned destinations, including Adrienne Arsht Center for the Performing Arts, Museum of Art and Design, Pérez Art Museum, The Phillip and Patricia Frost Museum of Science, Miami Heat's FTX Arena, and the city's most exclusive districts: Wynwood, Design District, Downtown Miami, Miami Beach, Brickell, and Coconut Grove. (Miami International Airport and major thruway access is just a short drive away.)

LOCATION



ARTIST'S CONCEPTUAL RENDERING

CASA BELLA BY B&E ITALIA



Award-winning restaurants, unforgettable nights out, a vibrant neighborhood buzzing with inspiration & entertainment.



*Nearby, the Design District, South Beach,
Bal Harbour—each an oasis of couture
and cuisine.*



Find yourself at the center of Miami's world-class performing arts scene.



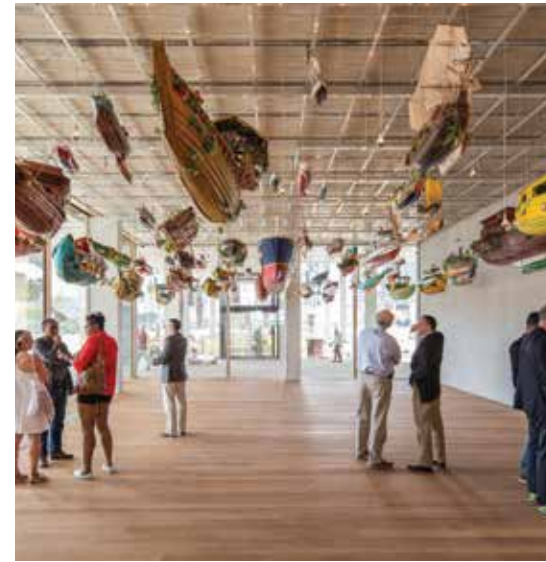


Adrienne Arsht Center for the Performing Arts

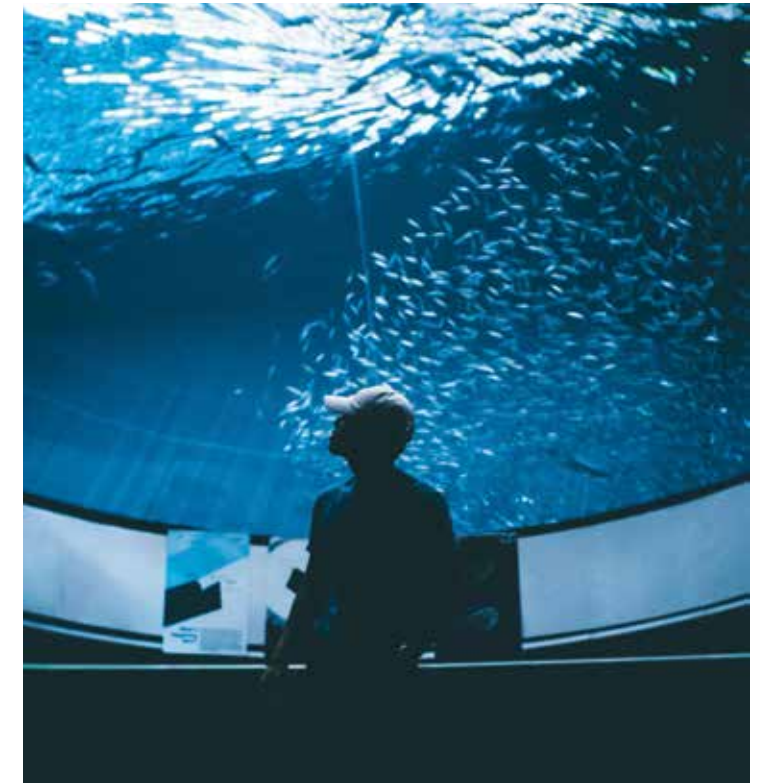
*At the heart of it all.
Miami's Arts &
Cultural District*



Pérez Art Museum Miami



Wynwood District



Philip and Patricia Frost Museum of Science



Design District



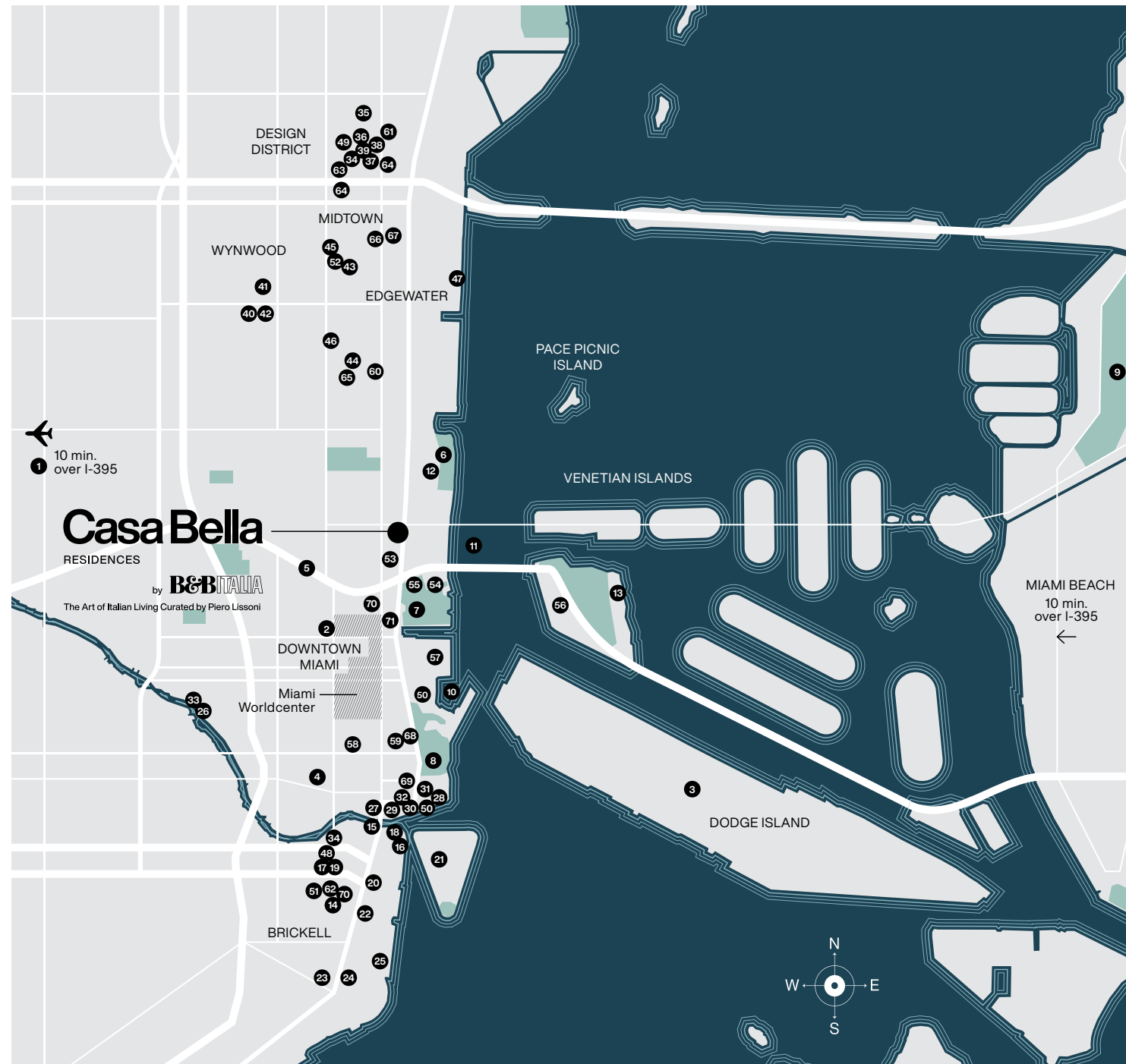
The new Downtown Miami

Already a thriving center of arts & culture, Downtown is about to become the city's most sought-after place to call home.

The incredible, sprawling Miami Worldcenter, a \$4 billion, 27-acre mecca of shopping, dining, and socializing—set along tree-lined, open-air promenades—gives the city a new level of cosmopolitan energy and instant global attraction.

As esteemed neighbors join the move Downtown, you'll have the best seats in the house for even more exciting restaurants, retailers, and experiences—and an exceptional new way of life that keeps getting better.

ARTS AND CULTURAL DISTRICT



LOCATION

CASA BELLA BY B&B ITALIA

TRANSPORTATION & TRAVEL:

1. Miami International Airport
2. Brightline MiamiCentral Station
3. Port of Miami
4. Metrorail & Metromover Government Center

PARKS & RECREATION:

5. Underdeck Park
6. Margaret Pace Park
7. Maurice A. Ferré Park
8. Bayfront Park Amphitheater
9. Miami Beach Golf Course

MARINAS & YACHT CLUB:

10. Bayside Marina
11. Sea Isle Marina & Yachting Center
12. Biscayne Bay Mega Yacht
13. Miami Yacht Club

RESTAURANTS:

Brickell

14. Sexy Fish
15. The Capital Grille
16. Cipriani
17. Quinto La Huella
18. Cantina La Veinte Miami
19. Sugar Rooftop & Bar
20. Komodo
21. NAOE
22. Nusr-Et Steakhouse
23. PM Fish & Steak House
24. Edge Steak & Bar
25. LPM Restaurant & Bar

Downtown

26. Seaspace Brasserie & Lounge
27. Area 31
28. Il Gabbiano
29. Zuma
30. Novikov Miami
31. Toro Toro
32. Boulud Sud Miami
33. Kiki on the River

Design District

34. COTE Miami
35. Mandolin Aegean Bistro
36. ZZ's Sushi Bar
37. L'Atelier de Joël Robuchon
38. Le Jardinier
39. Michael's Genuine Food and Drinks

Wynwood

40. Doya
41. KYU
42. Uchi Miami
43. SUGARCANE Raw Bar Grill
44. Plant Miami
45. Prohibition Restaurant & Speakeasy
46. Doma
47. Amara at Paraiso

SHOPS:

48. Brickell City Centre
49. Miami Design District
50. Bayside Shops & Marina
51. The Shops at Mary Brickell Village
52. The Shops at Midtown Miami

ARTS & ENTERTAINMENT:

53. Adrienne Arsht Center for the Performing Arts
54. Pérez Art Museum Miami
55. Phillip and Patricia Frost Museum of Science
56. Miami Children Museum
57. FTX Arena

SCHOOLS:

58. New World School of the Arts
59. Miami Dade College – Wolfson Campus
60. Mia Piccolo Montessori
61. Design and Architecture Senior High

FITNESS:

62. Equinox Brickell
63. Rise Nation Miami
64. DBC Fitness
65. Legacy Fit
66. Downtown Athletic Club
67. Anatomy Midtown

NEW DEVELOPMENTS:

Hotels:

68. Waldorf Astoria
69. citizenM Hotel Miami Worldcenter
70. Legacy Hotels & Residences
71. Eleven Hotel

Retail:

- Sephora
- Lucid Motors
- MiamiCentral Development Phase 2
- Genting Resort World

Restaurants Coming Soon

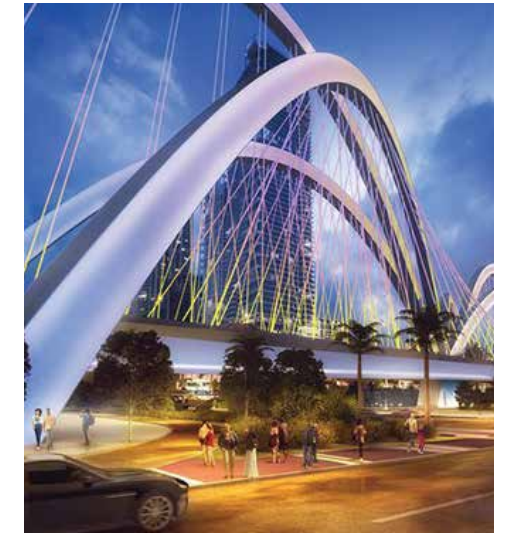
- Maple & Ash
- Etta
- Brasserie Laurel
- El Vecino
- Pastis

Movie Theater

- Nite Owl Drive In + Tropical Market
- Bowlero
- CMX Brickell City Centre

Government & Infrastructure:

- I-395/ SR 836/ I-95 Design-Build Project
- Miami-Dade County/ Brightline Coastal Commuter Rail Service
- Beach Corridor Rapid Transit Project
- Bike Network (Downtown)
- Biscayne Green
- Downtown Smart Kiosks
- Flagler Street Redesign
- Freedom Tower Station Renovation
- I-395 Baywalk Pedestrian & Bicycle Bridge
- I-395 Underdeck Miami Heritage Trail
- World Square



I-395 Bridge & Under Deck Park



Brickell City Centre



Brightline MiamiCentral Station

LOCATION

CASA BELLA BY B&B ITALIA

A stunning panorama of glittering water and Miami's dynamic cityscape.





ARTIST'S CONCEPTUAL RENDERING



Amenities & Services

Indoor Amenities

CasaBella Residences by B&B Italia offers two complete floors abundant with amenities, including a world-class fitness and wellness center, dedicated entertainment spaces, and a robust business hub

- Game room
- Children's playroom, with educational games and smartboard
- Spacious party room overlooking Biscayne Bay
- Cinema
- Wine room
- Museum quality art collection
- Fully equipped Business Center and conference room
- Co-working space with a comfortable lounge
- Pet spa
- 360 Wellness Center including: state-of-the-art fitness center overlooking Biscayne Bay, private yoga room, spin room, world-class spa offering a suite of on-demand services, and beauty salon with mani-pedi stations

Outdoor Amenities

A stunning 11th floor pool deck featuring Italian-inspired gardens designed by world-renowned landscape architect Enzo Enea, luxury spa, and 78-foot lap pool with incredible views of Biscayne Bay

- Poolside bar and Mediterranean café
- Private cabanas and shaded lounge areas
- Towel service and sun-care kiosk
- Open-air yoga lawn
- Pickleball court
- Private dining with dedicated space for outdoor grilling
- World-class artwork throughout common areas

56th Floor Sky Pool Terrace Observatory

Soaring 650 feet high is the rooftop pool and terrace, which includes CasaBella's private observatory—with a state-of-the-art telescope—and features extraordinary panoramic views of Biscayne Bay

The Grand Bay Beach Club

All residents enjoy complimentary one-year privileged access to Grand Bay Beach Club in Key Biscayne

24/7 Services

- Valet parking
- Multilingual team on site to assist at any hour
- Security
- Maintenance staff

On-Demand Concierge

- Housekeeping
- Pre-arrival grocery shopping & delivery
- Butler and housesitting services
- Dry cleaning & laundry
- Nanny and childcare
- Overnight shoe shining
- Pet care services
- Preferred tickets to theater and other events
- Courier services
- Personal IT and tech support
- Translation services
- Newspaper delivery



ARTIST'S CONCEPTUAL RENDERING

Limitless luxuries and abundant amenities, all infused with an artful, impeccably designed aesthetic by B&B Italia.

World-class, on-site spa—spacious and serene, with a full suite of services.



ARTIST'S CONCEPTUAL RENDERING

56th Floor
Sky Pool Terrace Observatory



World-class Fitness and Wellness Center

World-class amenities with unparalleled views of Biscayne Bay and the city beyond.



Wine Room



80-foot lap pool with incredible views of Biscayne Bay



Immerse yourself in quiet, sunlit spaces, a constant breeze, the beauty of a spacious private deck.

Residential Features

State-of-the-Art Kitchens

Sleek Italian cabinets in kitchens and baths by ITALKRAFT
 An exquisite selection of cabinet finishes and countertops, all individually selected by Piero Lissoni
 Top-of-the-line black glass appliance package includes integrated, paneled 36-inch Sub-Zero refrigerator/freezer, silent paneled dishwasher, Wolf built-in convection oven, Wolf built-in speed oven, ceramic glass countertop, and wine refrigeration (in most units)
 Oversized stainless steel zero-radius sink with single-lever European-designed pullout faucet drawer

Flawless Baths

Master baths with Italian cabinetry and design
 Vanity backlit mirrors
 Elongated electric water closet
 Spacious tubs and frameless glass-enclosed showers in master baths
 Imported porcelain flooring and walls Italian-designed faucets
 Powder rooms in select residences

Penthouse Collection

Our exclusive Penthouse Collection includes 24 spacious penthouses with 11-foot ceilings and four upper penthouses with 12-foot ceilings. Two of the upper penthouses enjoy a private rooftop terrace, each designed with a summer kitchen and spa tub, set against incredible views of the ocean and the Downtown Miami skyline

Custom Residences by B&B Italia

CasaBella Residences by B&B Italia offers the rare opportunity to have your home exclusively curated by B&B Italia, Italy's leading luxury furniture brand. B&B Italia's celebrated designers will consult with you to understand your vision and create masterful, luxury interiors that reflect your individual aesthetic, with thoughtfully selected pieces from the B&B Italia collections

All residences feature two private elevators and a private vestibule. Elevators are equipped with biometric access control for enhanced security. Most units enjoy spacious pass-through layouts with soaring 10-foot ceilings and breathtaking views of Biscayne Bay, the Downtown Miami skyline, and stunning sunsets from the west.

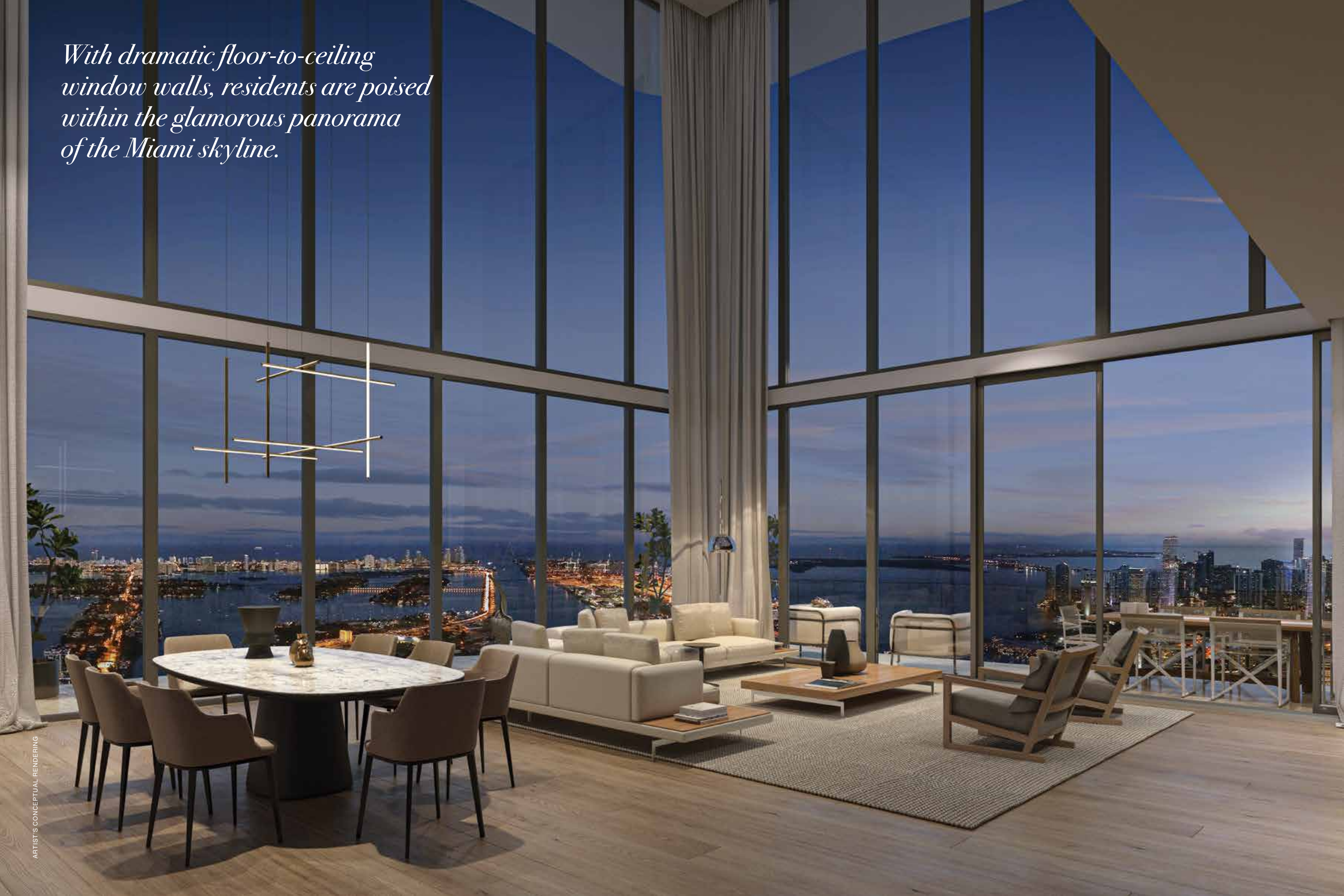


Open entertaining. An exquisite selection of cabinet finishes and countertops, all individually selected by Piero Lissoni.

Master baths featuring imported porcelain and premium Italian cabinetry with designer details.



With dramatic floor-to-ceiling window walls, residents are poised within the glamorous panorama of the Miami skyline.





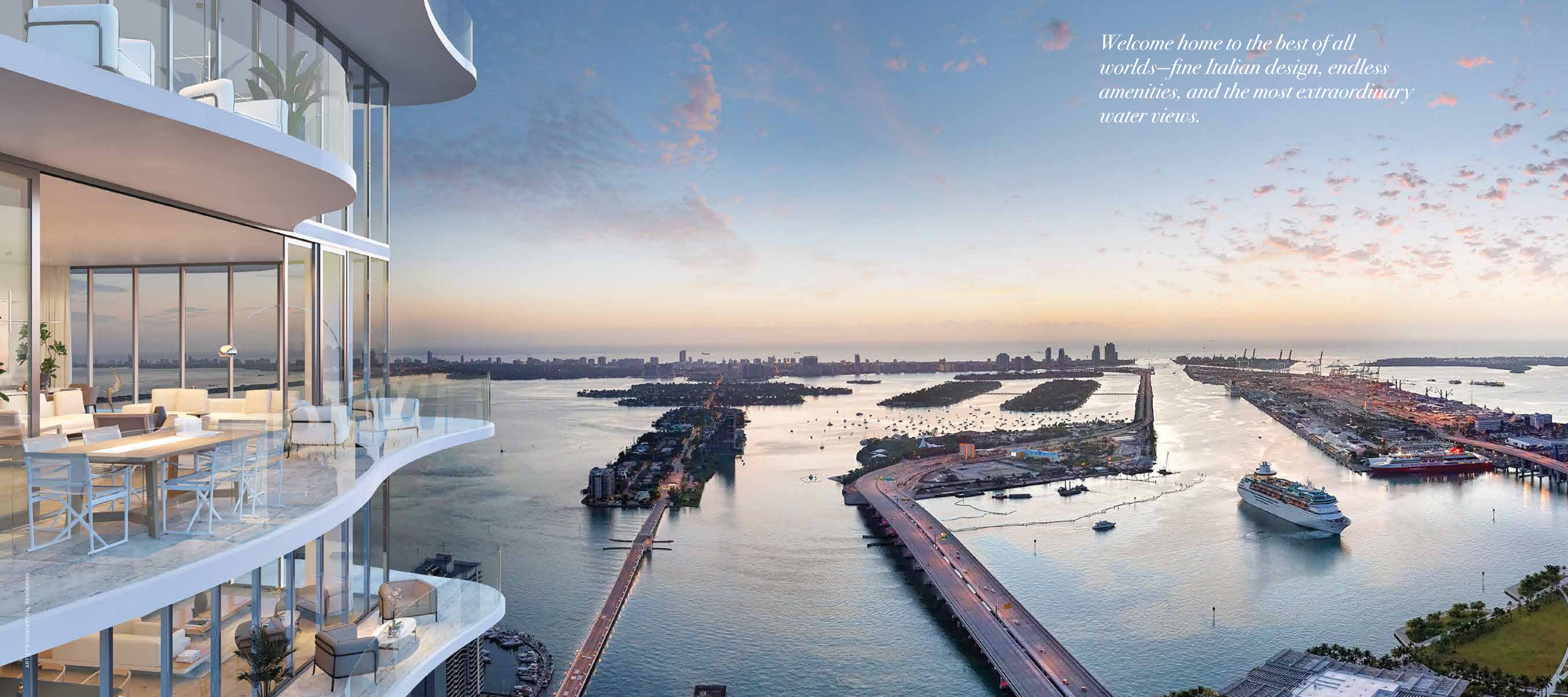
“We have created the ultimate private residences—incredibly luxurious and monumental, a showcase for an exceptional lifestyle.”

JON PAUL PÉREZ,
PRESIDENT, THE RELATED GROUP

Piero Lissoni, Jon Paul Pérez & Francesco Farina



*Welcome home to the best of all
worlds—fine Italian design, endless
amenities, and the most extraordinary
water views.*



Visionary Team

The Related Group

DEVELOPER

Established in 1979, Related Group is Florida's leading developer of sophisticated metropolitan living and one of the country's largest real estate conglomerates. The privately held company has built, rehabilitated, and managed over 100,000 condominium, rental, and commercial units. Related Group has earned international status for its visionary designs and development of extraordinary luxury properties, including One Park Grove, Apogee, and Residences by ARMANI/CASA, among others.



Residences by ARMANI/CASA, Sunny Isles, FL

THE TEAM

CASA BELLA BY B&B ITALIA

Alta Developers

DEVELOPER

Alta Developers is a South Florida based real estate development firm whose Principal & CEO, Raimundo Onetto, has been involved in some of the most noteworthy additions to the South Florida real estate landscape. Through advanced aesthetics and technology, Alta Developers operates with a commitment to environmental sustainability and cultural integrity, ensuring its formidable reputation of creating landmark properties.



One Paraiso, Edgewater, FL

THE TEAM

CASA BELLA BY B&B ITALIA

Visionary Team

(Continued)

B&B Italia

FURNISHINGS

Founded in 1966, B&B Italia is the leading Italian high-end design furniture brand, globally recognized for its iconic products and technological innovation. The company has a unique product portfolio, marketed under the B&B Italia, Maxalto, and Azucena brands for furniture and Arclinea for high-end kitchens. Over the years, B&B Italia has developed longstanding partnerships with world-renowned designers and architects that have positioned the company at the forefront of creativity, innovation, and industrial know-how. B&B Italia has been honored with numerous awards and is a four-time winner of the most coveted award in Italian industrial design: the Compasso d'Oro.



B&B Archives

Lissoni New York

INTERIOR DESIGN

Throughout the years, Piero Lissoni has built an international reputation for distinctive design anchored in thoughtful exploration with its diverse clients. In 2015, Lissoni New York was created to bring this expertise to interior design and architectural projects throughout North and South America. A rigorous dedication to each design project has led to a reputation for authentic and exceptional design solutions for spaces that occupy unique environments. The practice is committed to a holistic approach to place-making that synthesizes global influences, context, and innovation. Each project is approached as an opportunity for scholarship and innovation, and in keeping with the heritage of the Italian Renaissance, every element of the human experience is taken into consideration as the concept evolves.

Lissoni New York is the North American office and interior design practice of architect and designer Piero Lissoni. It is an extension of Lissoni & Partners, the Milan-based interdisciplinary studio.



Piero Lissoni

Visionary Team

(Continued)

Arquitectonica

ARCHITECTURE

Led by Principals Bernardo Fort-Brescia and Laurinda Spear, Arquitectonica pushes the limits of design with its groundbreaking use of materials, geometry, pattern, and color to create a new kind of humanistic modern aesthetic, redefining and elevating Miami's cityscape since 1977.



Landmark East Building, Hong Kong

THE TEAM

CASA BELLA BY B&B ITALIA

Enzo Enea

LANDSCAPES

Enzo Enea is the creator of ENEA GmbH, one of the world's leading landscape architecture firms, known for its multi-disciplinary team and extraordinary ability to create a striking balance of indoors and out, from custom luxury gardens to public parks. In 2006, Enea opened the firm's first U.S. division in Miami. The firm's work includes, among others, residential, commercial, and public projects; it has earned recognition across the globe, and locally, from the Florida Chapter of the American Society of Landscape Architects.



Park Grove, Coconut Grove, FL

THE TEAM

*Welcome to spacious layouts,
panoramic water views, and your
own private elevator.*

Podium Typical Floor

Floors 2 through 9

CASA 02
1,303 sf | 121 m²



CASA 09
1,190 sf | 111 m²

CASA 09
1,060 sf | 99 m²

CASA 06MOD2
1,595 sf | 148 m²

CASA 05
1,613 sf | 150 m²

CASA 04
1,216 sf | 113 m²

CASA 03
1,819 sf | 169 m²

CASA 01
1,953 sf | 182 m²

Biscayne Bay

Downtown Views

Tower Typical Floor - Mod

Floors 12 through 36

CASA 07
992 sf | 92 m²



CASA 06MOD
1,775 sf | 165 m²

CASA 05
1,802 sf | 168 m²

CASA 04
1,408 sf | 131 m²

CASA 03
2,018 sf | 187 m²

CASA 01
2,523 sf | 235 m²



Biscayne Bay

Downtown Views

Tower Typical Floor

Floors 37 through 47

CASA 06
2,187 sf | 203 m²



CASA 05
1,613 sf | 150 m²

CASA 04
1,216 sf | 113 m²

CASA 03
1,819 sf | 169 m²

CASA 02
1,303 sf | 121 m²

CASA 01
1,953 sf | 182 m²

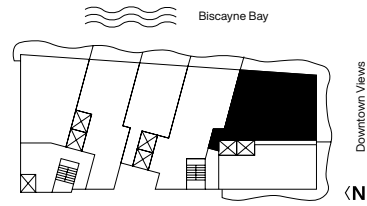


Biscayne Bay

Downtown Views

Casa 01

Floors 2 through 47

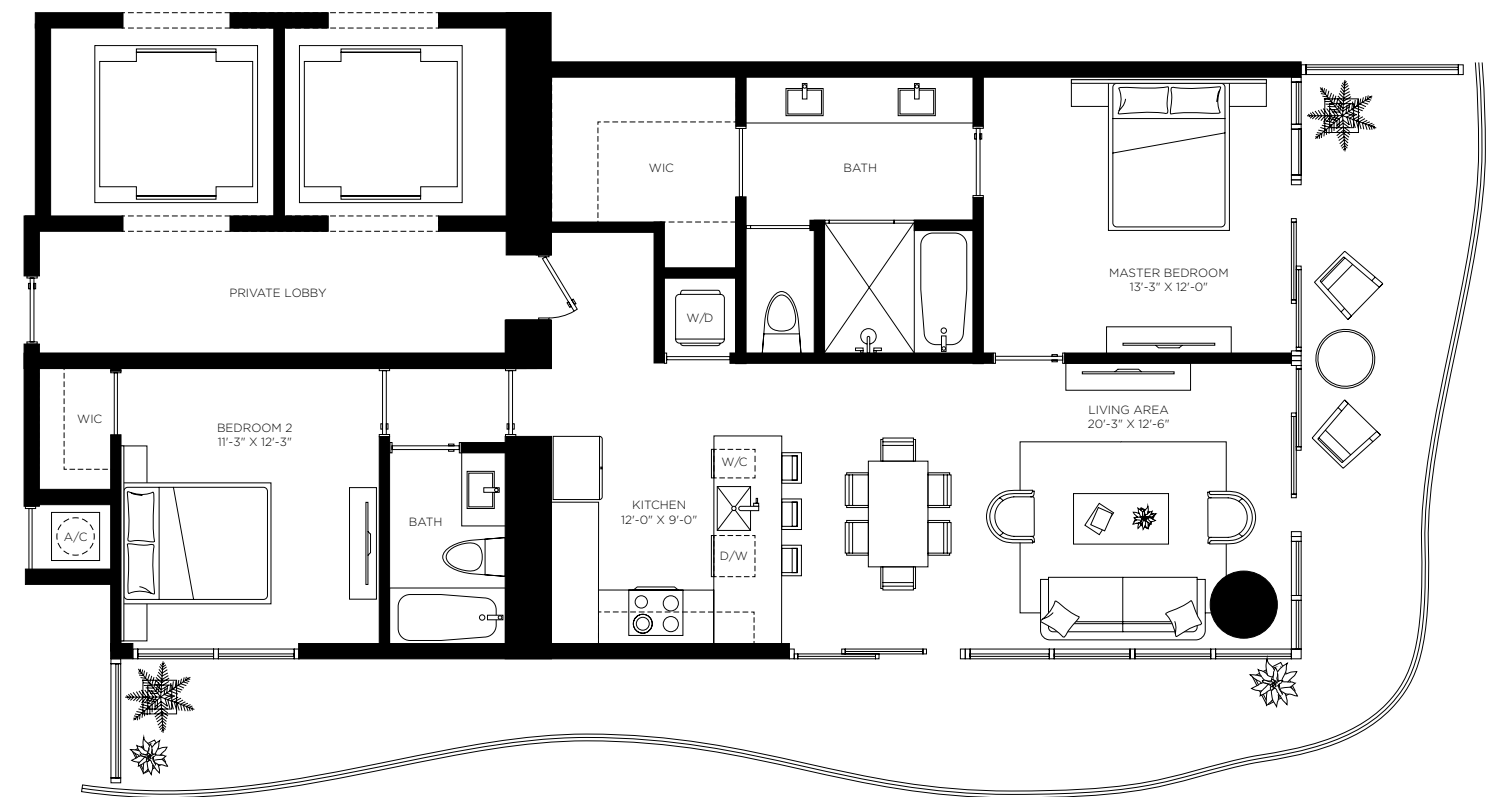
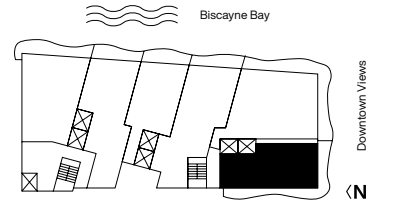


3 Bedrooms
3.5 Bathrooms
AC Area
 1,953 sf / 182 m²
Outdoor Area
 570 sf / 53 m²
Total Area
 2,523 sf / 235 m²

The dimensions stated for this unit floor plan are approximate because there are various recognized methods for calculating the square footage of a unit. The square footage stated here is calculated from the exterior boundaries of the exterior walls to the centerline of interior demising walls without deductions for cutouts, curves, or architectural features. This method typically results in quoted dimensions greater than the dimensions that would be determined by using other accepted methods. The definition of "Unit" and the calculation method to be relied upon is set forth in the Developer's Prospectus and the method set forth in the Developer's Prospectus may result in a square footage calculation less than the method used here. Consult the Developer's Prospectus for information on what is offered with the Unit and the calculation of the Unit square footage and dimensions.

Casa 02

Floors 2 through 47

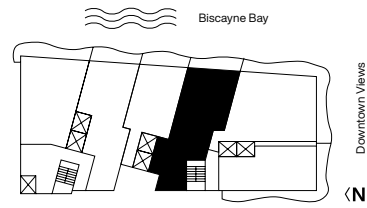


2 Bedrooms
2 Bathrooms
AC Area
 1,303 sf / 121 m²
Outdoor Area
 464 sf / 43 m²
Total Area
 1,767 sf / 164 m²

The dimensions stated for this unit floor plan are approximate because there are various recognized methods for calculating the square footage of a unit. The square footage stated here is calculated from the exterior boundaries of the exterior walls to the centerline of interior demising walls without deductions for cutouts, curves, or architectural features. This method typically results in quoted dimensions greater than the dimensions that would be determined by using other accepted methods. The definition of "Unit" and the calculation method to be relied upon is set forth in the Developer's Prospectus and the method set forth in the Developer's Prospectus may result in a square footage calculation less than the method used here. Consult the Developer's Prospectus for information on what is offered with the Unit and the calculation of the Unit square footage and dimensions.

Casa 03

Floors 2 through 47

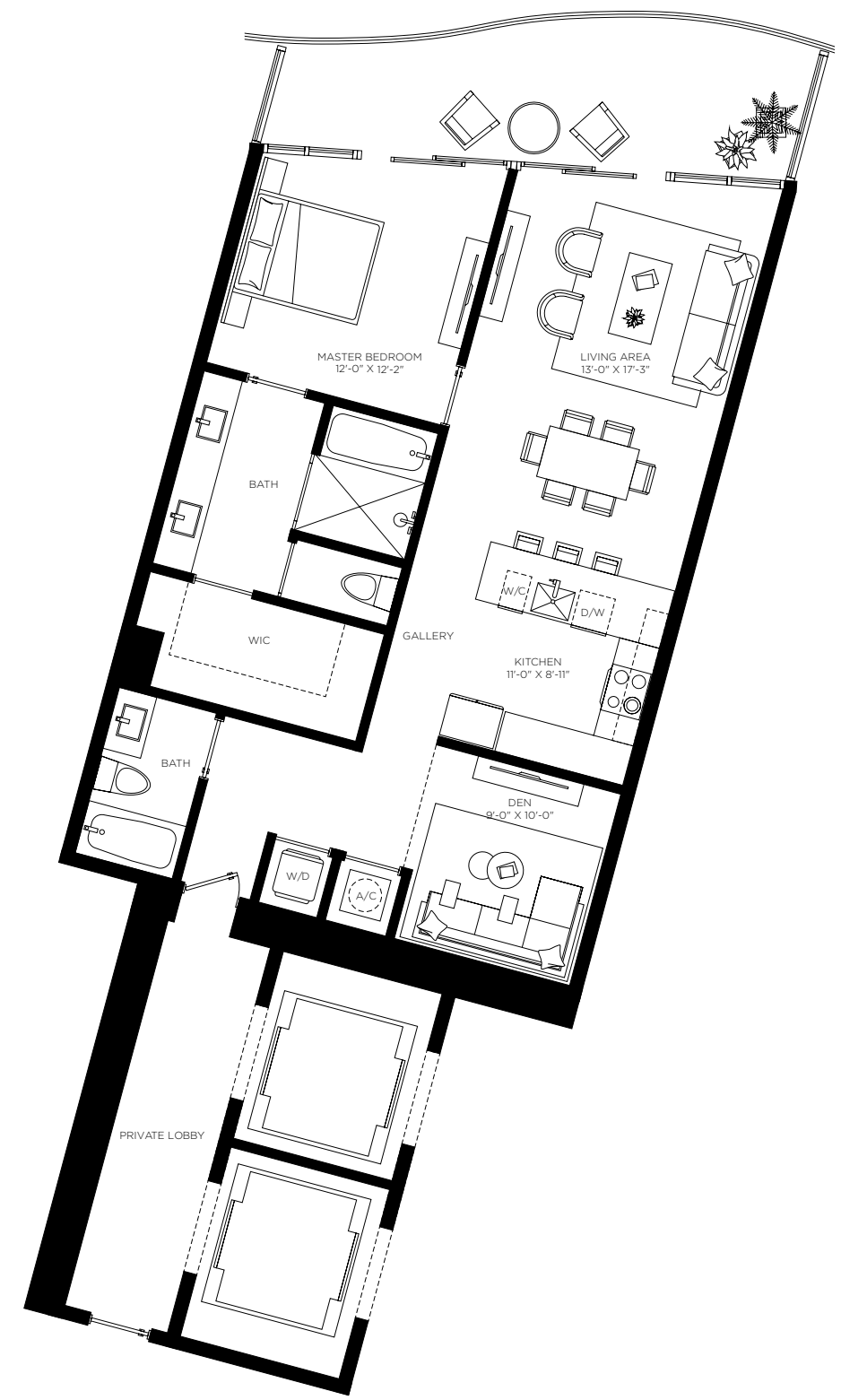
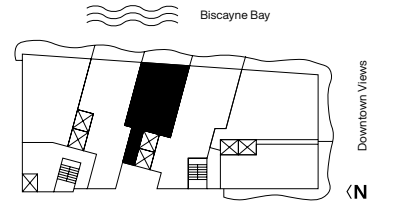


2 Bedrooms 3 Bathrooms Den	AC Area 1,819 sf / 169 m ²	Outdoor Area 199 sf / 18 m ²	Total Area 2,018 sf / 187 m ²
---	---	---	--

The dimensions stated for this unit floor plan are approximate because there are various recognized methods for calculating the square footage of a unit. The square footage stated here is calculated from the exterior boundaries of the exterior walls to the centerline of interior demising walls without deductions for cutouts, curves, or architectural features. This method typically results in quoted dimensions greater than the dimensions that would be determined by using other accepted methods. The definition of "Unit" and the calculation method to be relied upon is set forth in the Developer's Prospectus and the method set forth in the Developer's Prospectus may result in a square footage calculation less than the method used here. Consult the Developer's Prospectus for information on what is offered with the Unit and the calculation of the Unit square footage and dimensions.

Casa 04

Floors 2 through 39

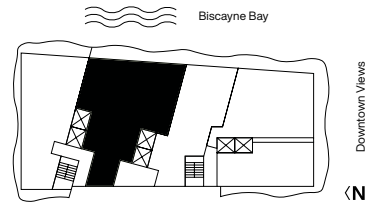


1 Bedroom 2 Bathrooms Den	AC Area 1,216 sf / 113 m ²	Outdoor Area 192 sf / 18 m ²	Total Area 1,408 sf / 131 m ²
--	---	---	--

The dimensions stated for this unit floor plan are approximate because there are various recognized methods for calculating the square footage of a unit. The square footage stated here is calculated from the exterior boundaries of the exterior walls to the centerline of interior demising walls without deductions for cutouts, curves, or architectural features. This method typically results in quoted dimensions greater than the dimensions that would be determined by using other accepted methods. The definition of "Unit" and the calculation method to be relied upon is set forth in the Developer's Prospectus and the method set forth in the Developer's Prospectus may result in a square footage calculation less than the method used here. Consult the Developer's Prospectus for information on what is offered with the Unit and the calculation of the Unit square footage and dimensions.

Casa 04C

Floors 40 through 47

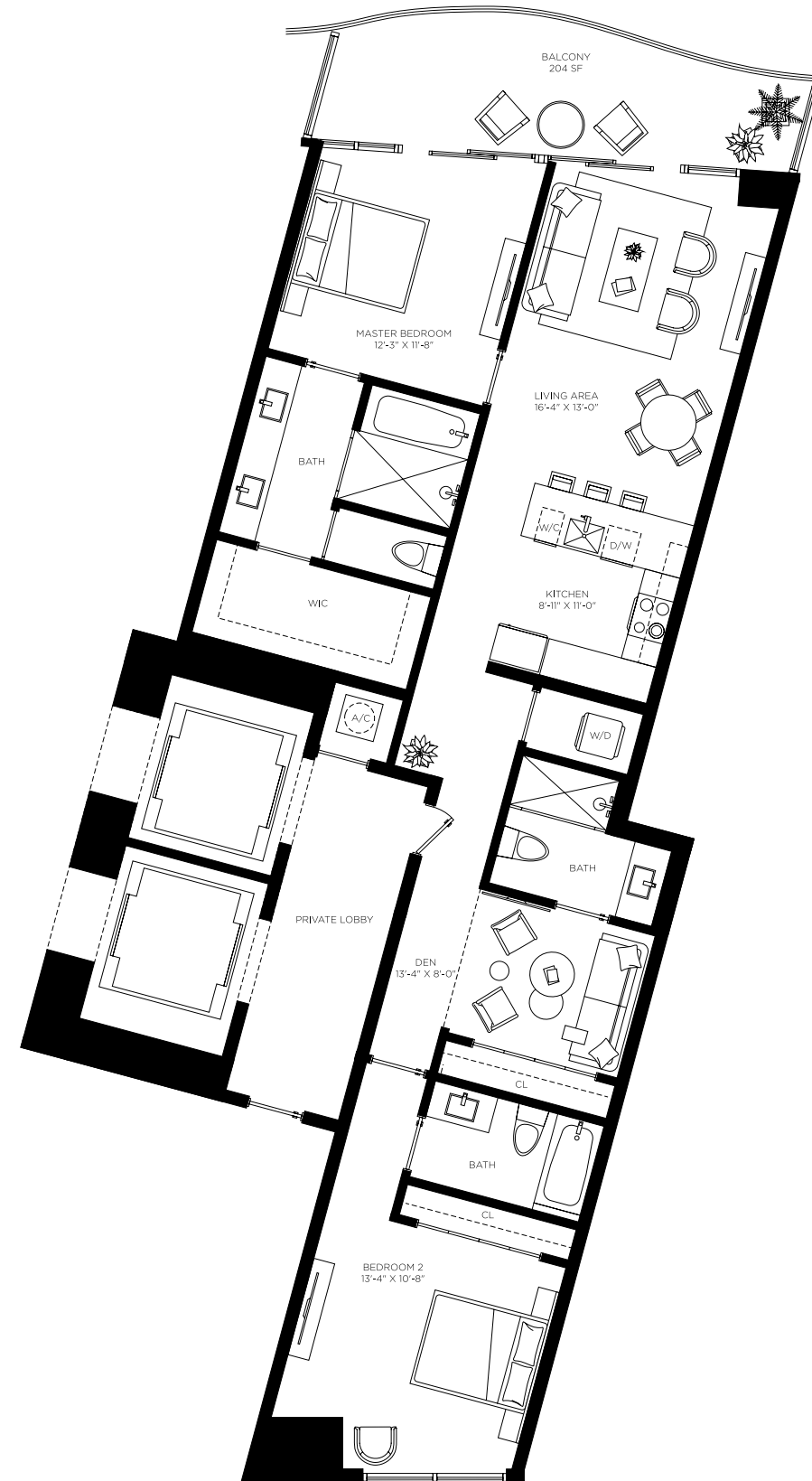
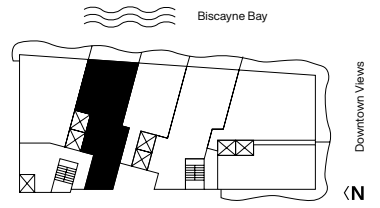


3 Bedrooms	AC Area	Outdoor Area	Total Area
4.5 Bathrooms	2,719 sf / 252 m ²	341 sf / 32 m ²	3,060 sf / 284 m ²
Den			

The dimensions stated for this unit floor plan are approximate because there are various recognized methods for calculating the square footage of a unit. The square footage stated here is calculated from the exterior boundaries of the exterior walls to the centerline of interior demising walls without deductions for cutouts, curves, or architectural features. This method typically results in quoted dimensions greater than the dimensions that would be determined by using other accepted methods. The definition of "Unit" and the calculation method to be relied upon is set forth in the Developer's Prospectus and the method set forth in the Developer's Prospectus may result in a square footage calculation less than the method used here. Consult the Developer's Prospectus for information on what is offered with the Unit and the calculation of the Unit square footage and dimensions.

Casa 05

Floors 2 through 39

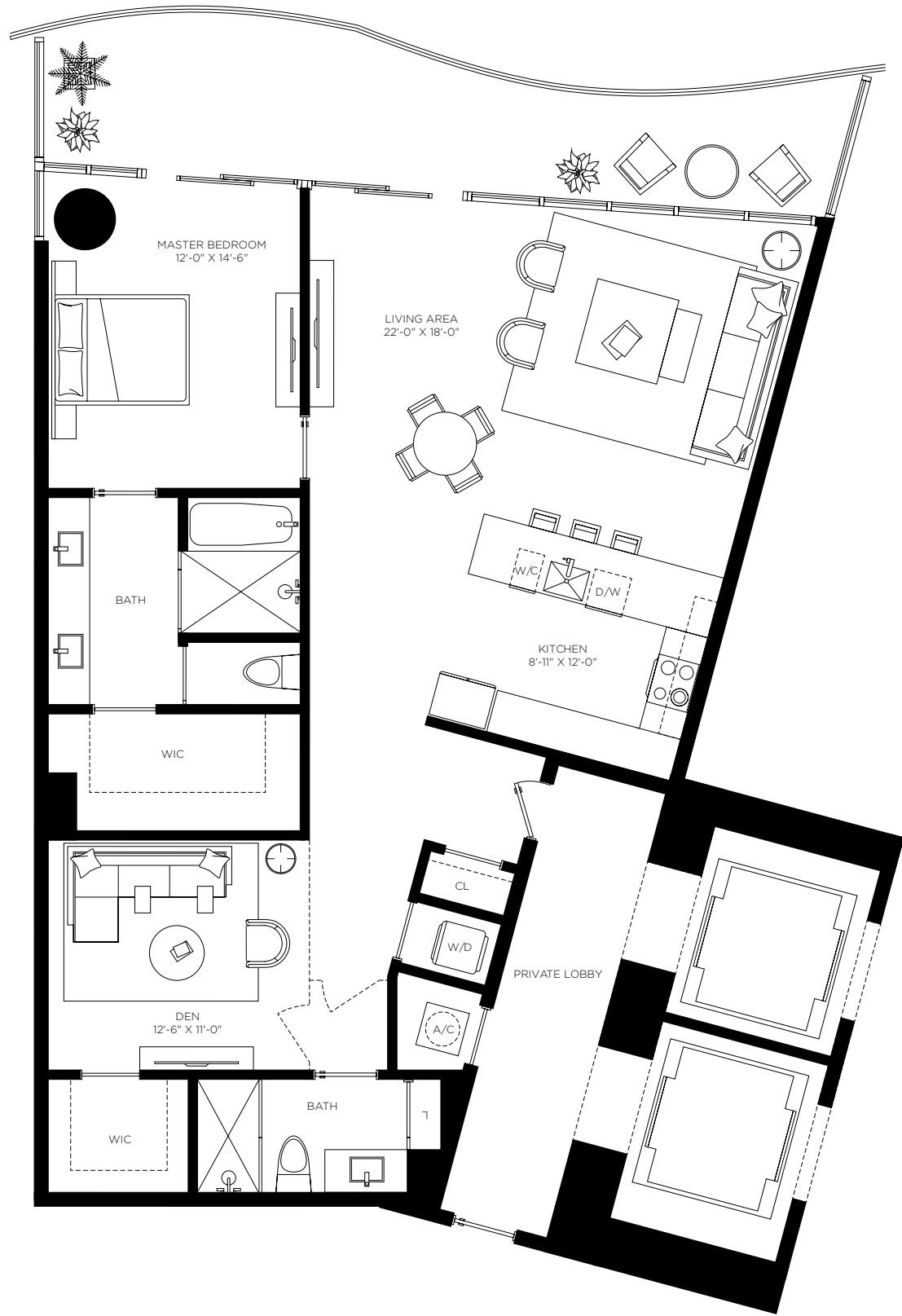
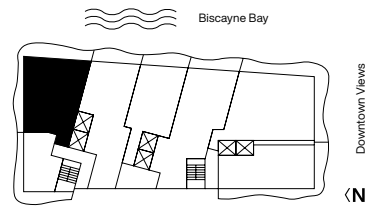


2 Bedrooms	AC Area	Outdoor Area	Total Area
3 Bathrooms	1,613 sf / 150 m ²	189 sf / 18 m ²	1,802 sf / 168 m ²
Den			

The dimensions stated for this unit floor plan are approximate because there are various recognized methods for calculating the square footage of a unit. The square footage stated here is calculated from the exterior boundaries of the exterior walls to the centerline of interior demising walls without deductions for cutouts, curves, or architectural features. This method typically results in quoted dimensions greater than the dimensions that would be determined by using other accepted methods. The definition of "Unit" and the calculation method to be relied upon is set forth in the Developer's Prospectus and the method set forth in the Developer's Prospectus may result in a square footage calculation less than the method used here. Consult the Developer's Prospectus for information on what is offered with the Unit and the calculation of the Unit square footage and dimensions.

Casa 06 MOD2

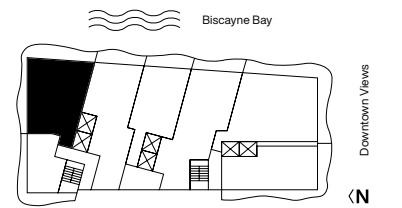
Floors 2 through 9



1 Bedroom	AC Area	Outdoor Area	Total Area
2 Bathrooms	1,595 sf / 148 m ²	290 sf / 27 m ²	1,885 sf / 175 m ²
Den			

Casa 06 MOD

Floors 12 through 36



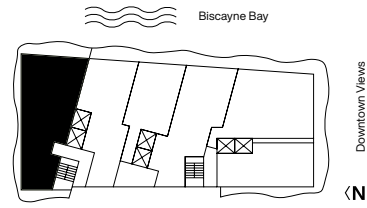
2 Bedrooms	AC Area	Outdoor Area	Total Area
2 Bathrooms	1,326 sf / 123 m ²	449 sf / 42 m ²	1,775 sf / 165 m ²

The dimensions stated for this unit floor plan are approximate because there are various recognized methods for calculating the square footage of a unit. The square footage stated here is calculated from the exterior boundaries of the exterior walls to the centerline of interior demising walls without deductions for cutouts, curves, or architectural features. This method typically results in quoted dimensions greater than the dimensions that would be determined by using other accepted methods. The definition of "Unit" and the calculation method to be relied upon is set forth in the Developer's Prospectus and the method set forth in the Developer's Prospectus may result in a square footage calculation less than the method used here. Consult the Developer's Prospectus for information on what is offered with the Unit and the calculation of the Unit square footage and dimensions.

The dimensions stated for this unit floor plan are approximate because there are various recognized methods for calculating the square footage of a unit. The square footage stated here is calculated from the exterior boundaries of the exterior walls to the centerline of interior demising walls without deductions for cutouts, curves, or architectural features. This method typically results in quoted dimensions greater than the dimensions that would be determined by using other accepted methods. The definition of "Unit" and the calculation method to be relied upon is set forth in the Developer's Prospectus and the method set forth in the Developer's Prospectus may result in a square footage calculation less than the method used here. Consult the Developer's Prospectus for information on what is offered with the Unit and the calculation of the Unit square footage and dimensions.

Casa 06

Floors 37 through 47



4 Bedrooms
4 Bathrooms

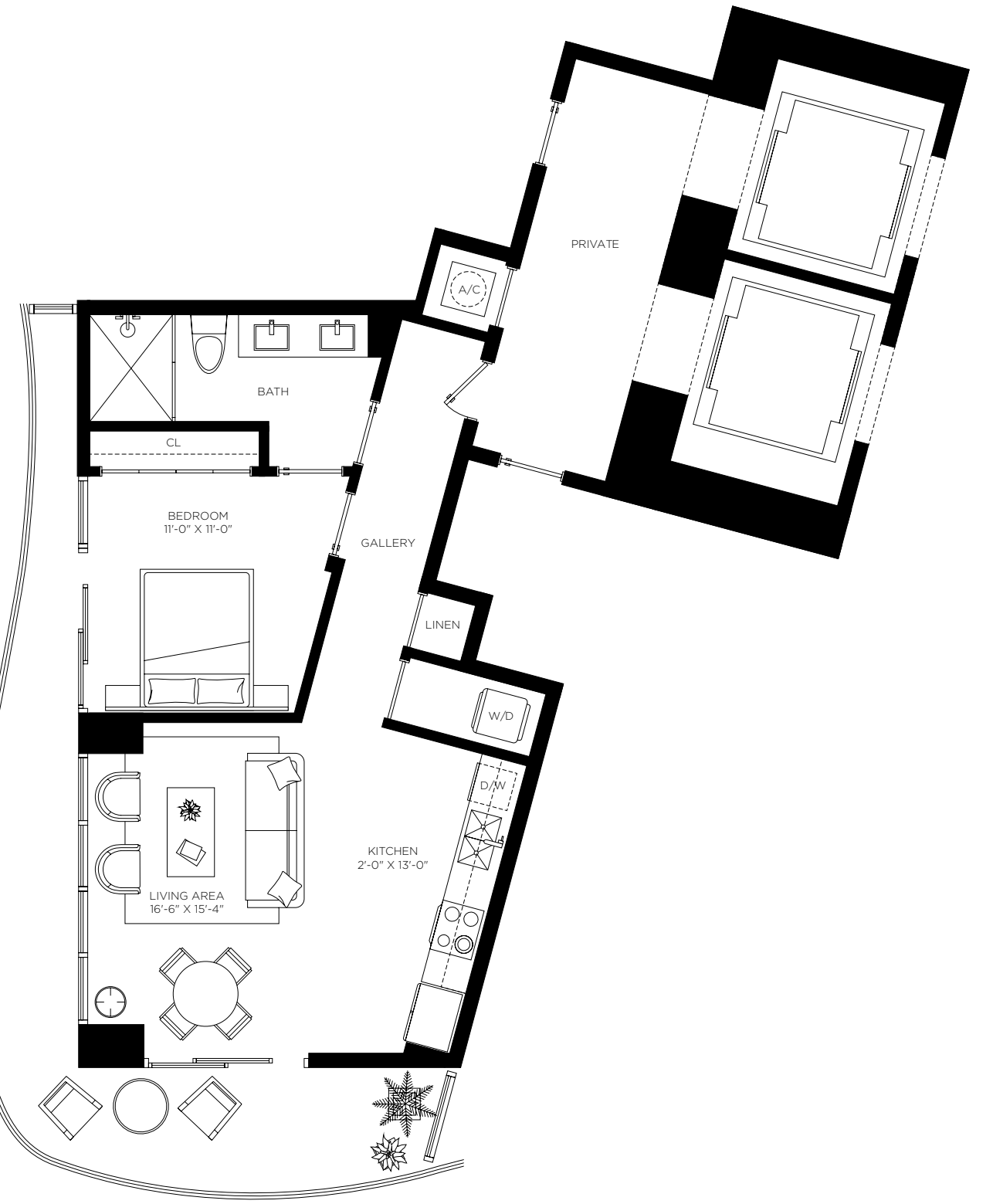
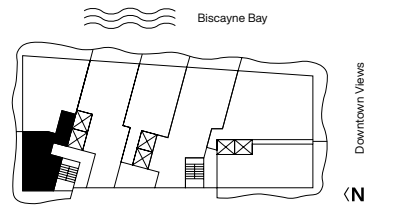
AC Area
2,187 sf / 203 m²

Outdoor Area
722 sf / 67 m²

Total Area
2,909 sf / 270 m²

Casa 07

Floors 12 through 36



1 Bedroom
1 Bathroom

AC Area
711 sf / 66 m²

Outdoor Area
281 sf / 26 m²

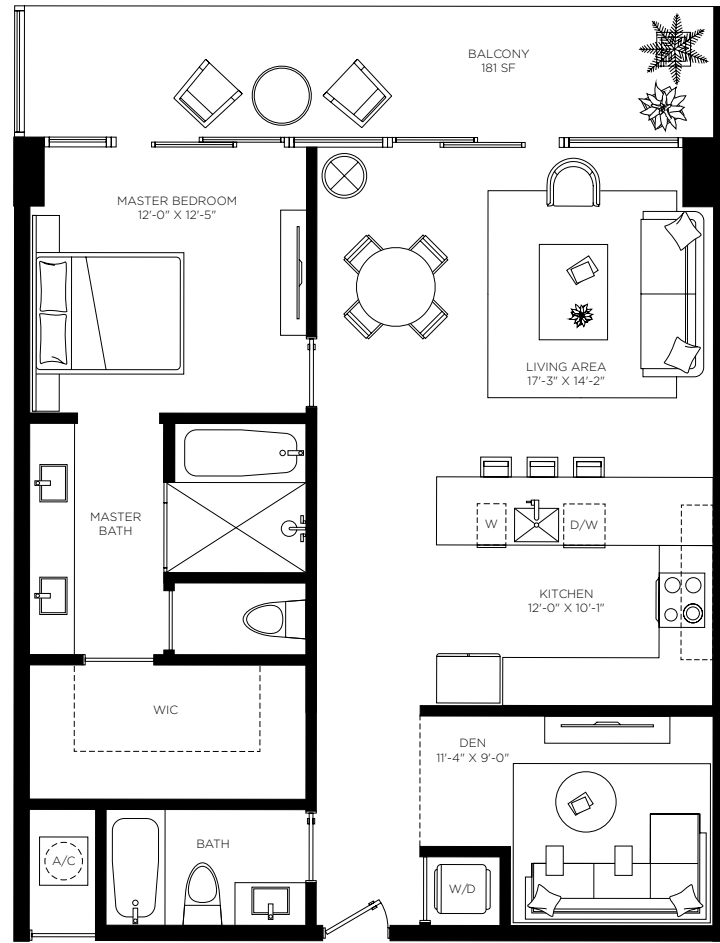
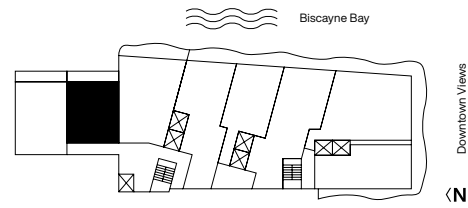
Total Area
992 sf / 92 m²

The dimensions stated for this unit floor plan are approximate because there are various recognized methods for calculating the square footage of a unit. The square footage stated here is calculated from the exterior boundaries of the exterior walls to the centerline of interior demising walls without deductions for cutouts, curves, or architectural features. This method typically results in quoted dimensions greater than the dimensions that would be determined by using other accepted methods. The definition of "Unit" and the calculation method to be relied upon is set forth in the Developer's Prospectus and the method set forth in the Developer's Prospectus may result in a square footage calculation less than the method used here. Consult the Developer's Prospectus for information on what is offered with the Unit and the calculation of the Unit square footage and dimensions.

The dimensions stated for this unit floor plan are approximate because there are various recognized methods for calculating the square footage of a unit. The square footage stated here is calculated from the exterior boundaries of the exterior walls to the centerline of interior demising walls without deductions for cutouts, curves, or architectural features. This method typically results in quoted dimensions greater than the dimensions that would be determined by using other accepted methods. The definition of "Unit" and the calculation method to be relied upon is set forth in the Developer's Prospectus and the method set forth in the Developer's Prospectus may result in a square footage calculation less than the method used here. Consult the Developer's Prospectus for information on what is offered with the Unit and the calculation of the Unit square footage and dimensions.

Casa 08

Floors 2 through 8

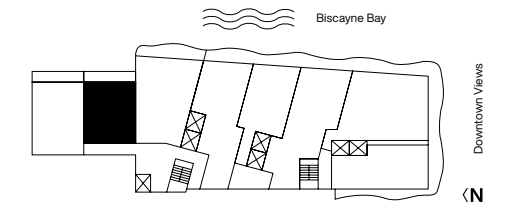


1 Bedroom	AC Area	Outdoor Area	Total Area
2 Bathrooms	1,060 sf / 98.5 m ²	181 sf / 17 m ²	1,241 sf / 115 m ²
Den			

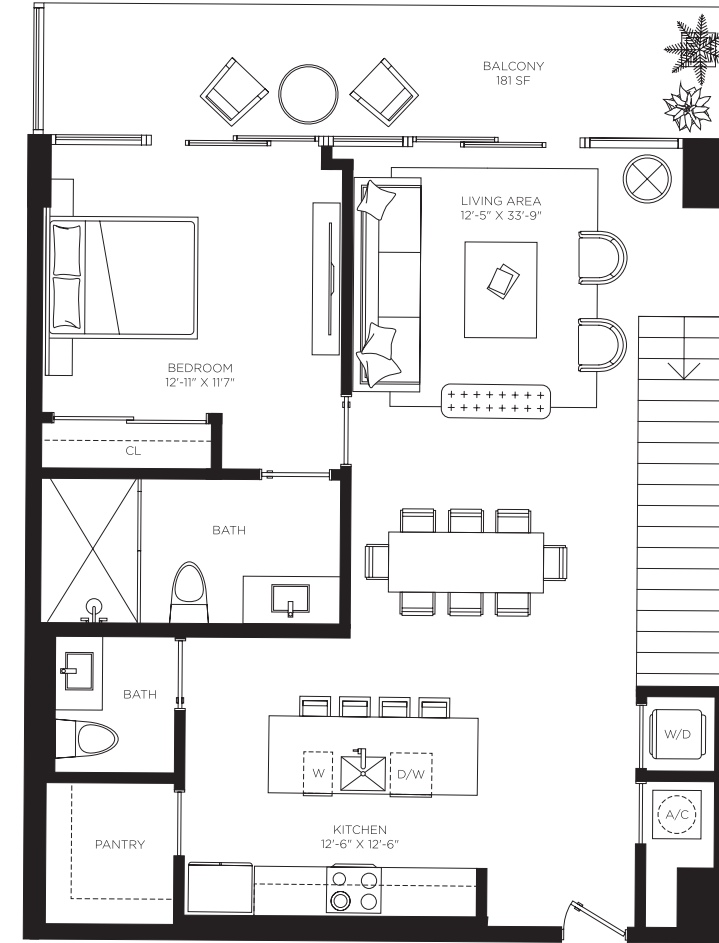
The dimensions stated for this unit floor plan are approximate because there are various recognized methods for calculating the square footage of a unit. The square footage stated here is calculated from the exterior boundaries of the exterior walls to the centerline of interior demising walls without deductions for cutouts, curves, or architectural features. This method typically results in quoted dimensions greater than the dimensions that would be determined by using other accepted methods. The definition of "Unit" and the calculation method to be relied upon is set forth in the Developer's Prospectus and the method set forth in the Developer's Prospectus may result in a square footage calculation less than the method used here. Consult the Developer's Prospectus for information on what is offered with the Unit and the calculation of the Unit square footage and dimensions.

Casa 08MOD

Floor 9



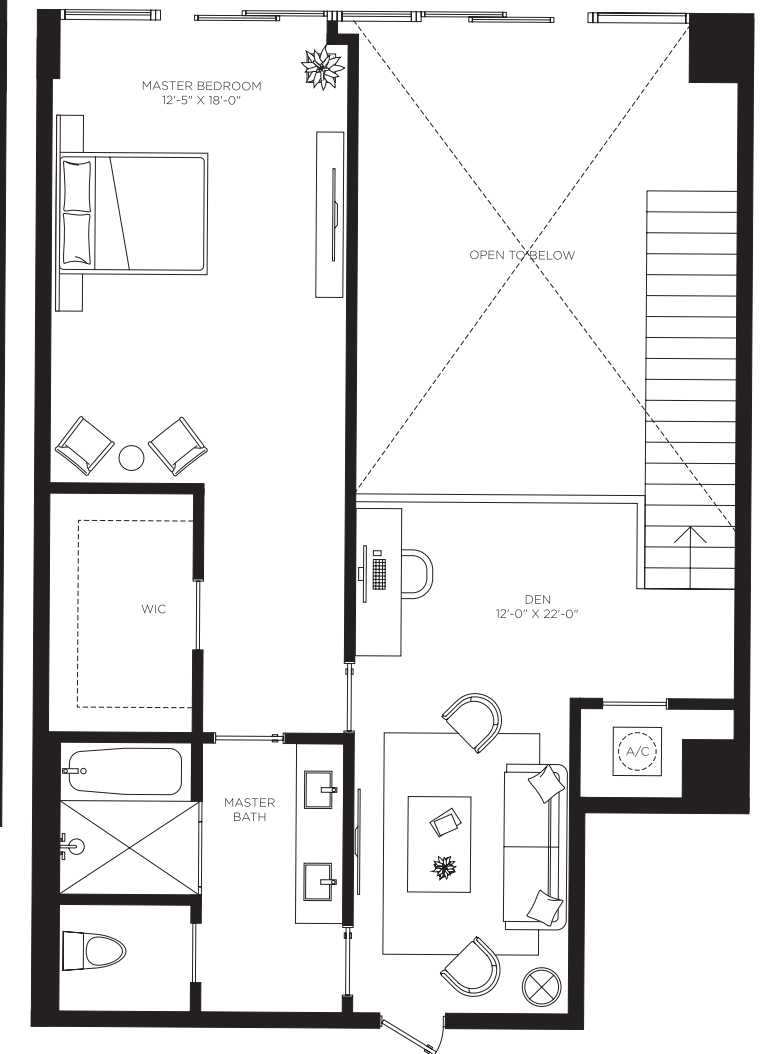
1st Floor



2 Bedrooms	AC Area	Outdoor Area	Total Area
2.5 Bathrooms	1,878 sf / 175 m ²	181 sf / 17 m ²	2,059 sf / 191 m ²
Den			

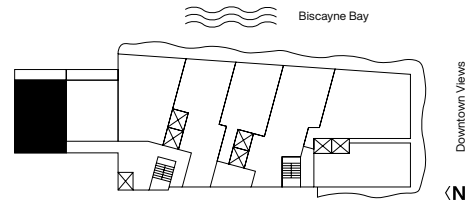
The dimensions stated for this unit floor plan are approximate because there are various recognized methods for calculating the square footage of a unit. The square footage stated here is calculated from the exterior boundaries of the exterior walls to the centerline of interior demising walls without deductions for cutouts, curves, or architectural features. This method typically results in quoted dimensions greater than the dimensions that would be determined by using other accepted methods. The definition of "Unit" and the calculation method to be relied upon is set forth in the Developer's Prospectus and the method set forth in the Developer's Prospectus may result in a square footage calculation less than the method used here. Consult the Developer's Prospectus for information on what is offered with the Unit and the calculation of the Unit square footage and dimensions.

2nd Floor



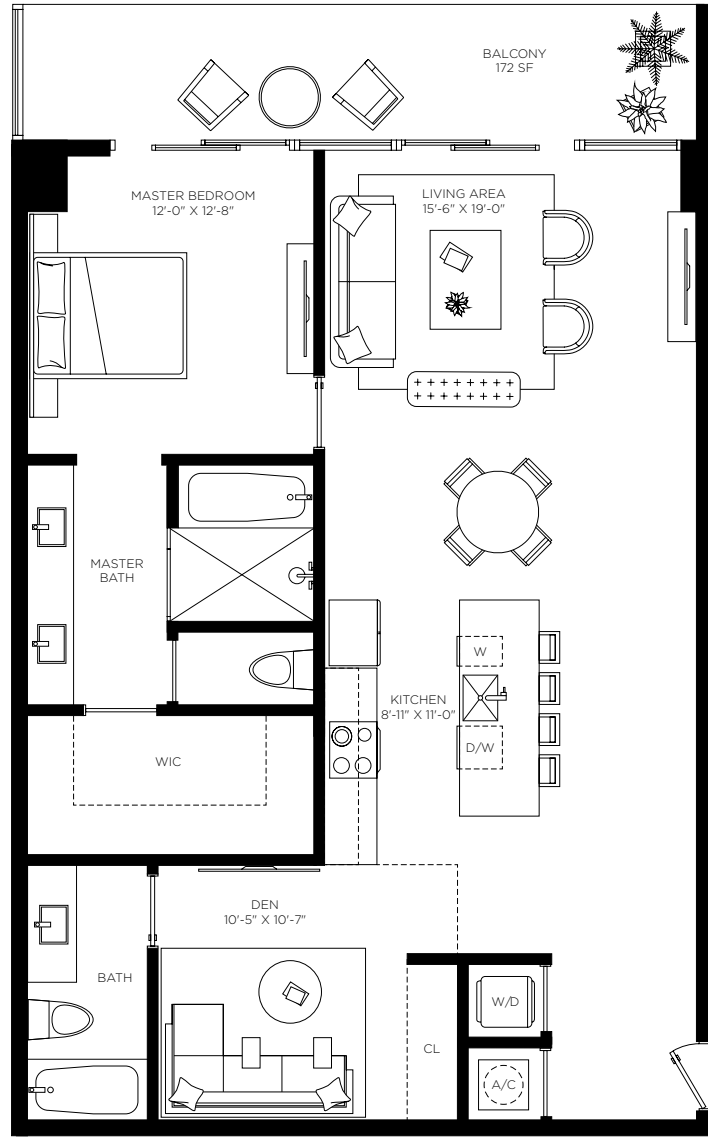
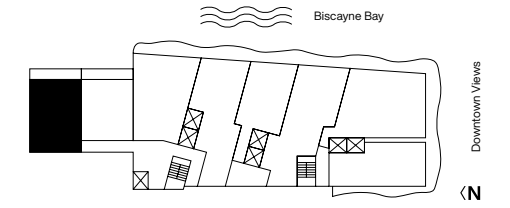
Casa 09

Floors 2 through 8

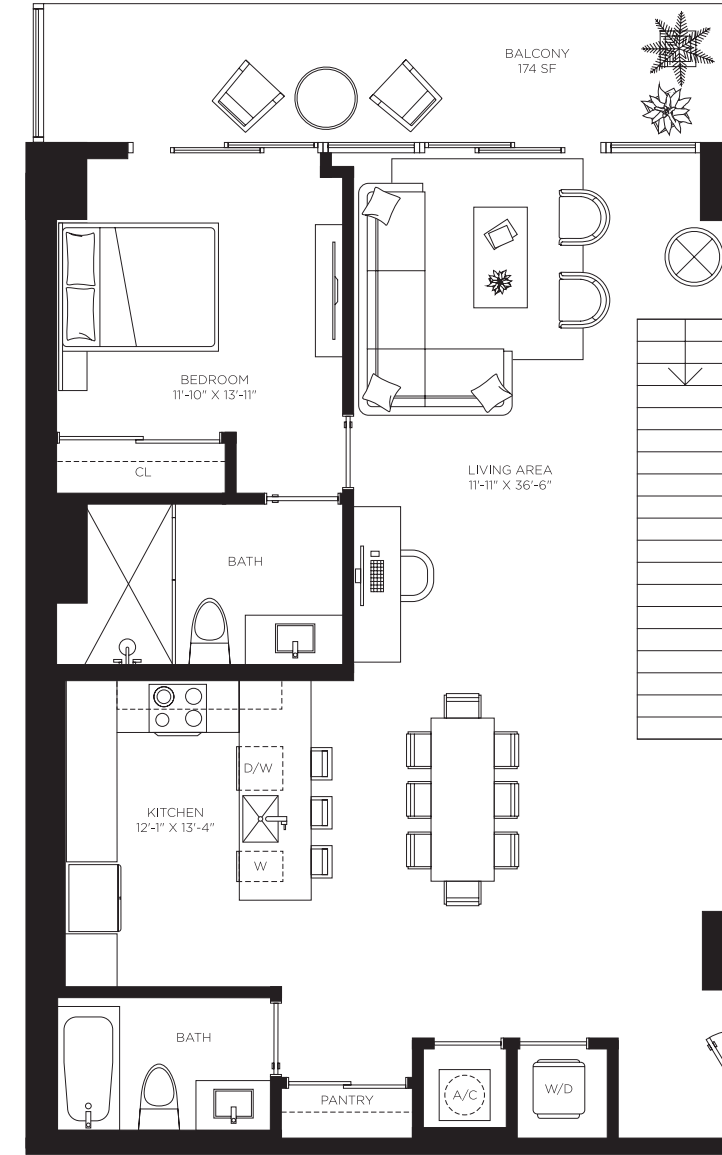


Casa 09MOD

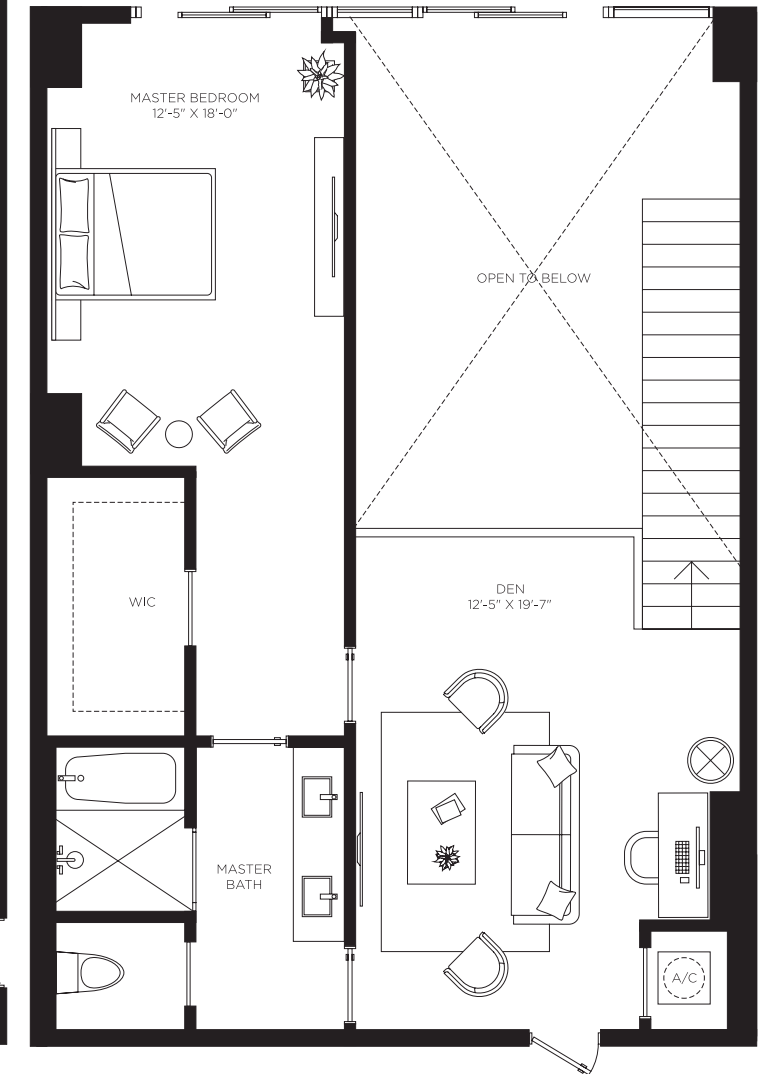
Floor 9



1st Floor



2nd Floor



1 Bedroom	AC Area	Outdoor Area	Total Area
2 Bathrooms	1,190 sf / 111 m ²	172 sf / 16 m ²	1,362 sf / 127 m ²
Den			

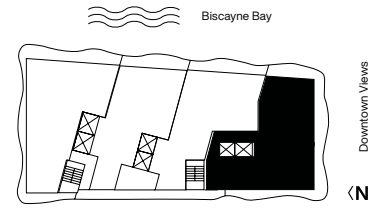
2 Bedrooms	AC Area	Outdoor Area	Total Area
3 Bathrooms	2,053 sf / 191 m ²	172 sf / 16 m ²	2,225 sf / 207 m ²
Den			

The dimensions stated for this unit floor plan are approximate because there are various recognized methods for calculating the square footage of a unit. The square footage stated here is calculated from the exterior boundaries of the exterior walls to the centerline of interior demising walls without deductions for cutouts, curves, or architectural features. This method typically results in quoted dimensions greater than the dimensions that would be determined by using other accepted methods. The definition of "Unit" and the calculation method to be relied upon is set forth in the Developer's Prospectus and the method set forth in the Developer's Prospectus may result in a square footage calculation less than the method used here. Consult the Developer's Prospectus for information on what is offered with the Unit and the calculation of the Unit square footage and dimensions.

The dimensions stated for this unit floor plan are approximate because there are various recognized methods for calculating the square footage of a unit. The square footage stated here is calculated from the exterior boundaries of the exterior walls to the centerline of interior demising walls without deductions for cutouts, curves, or architectural features. This method typically results in quoted dimensions greater than the dimensions that would be determined by using other accepted methods. The definition of "Unit" and the calculation method to be relied upon is set forth in the Developer's Prospectus and the method set forth in the Developer's Prospectus may result in a square footage calculation less than the method used here. Consult the Developer's Prospectus for information on what is offered with the Unit and the calculation of the Unit square footage and dimensions.

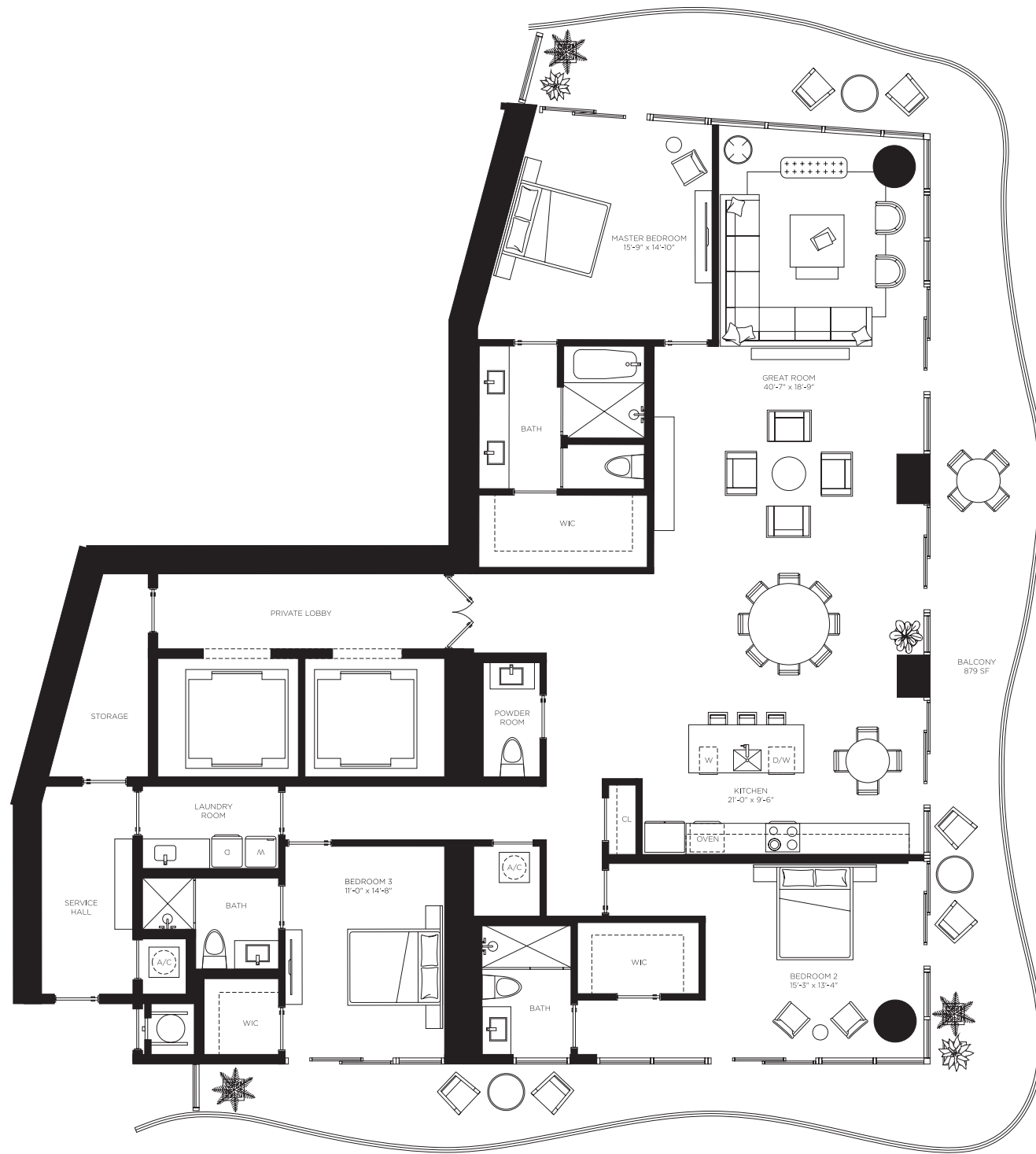
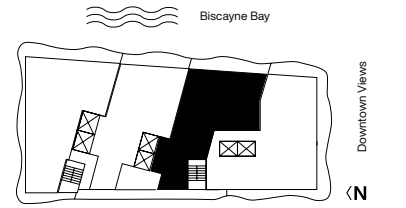
Cielo Uno

Floors 48 through 51



Cielo Due

Floors 48 through 51



3 Bedrooms
3.5 Bathrooms

AC Area
2,920 sf / 271 m²

Outdoor Area
879 sf / 82 m²

Total Area
3,799 sf / 353 m²

3 Bedrooms
3.5 Bathrooms
Den

AC Area
2,315 sf / 215 m²

Outdoor Area
262 sf / 24 m²

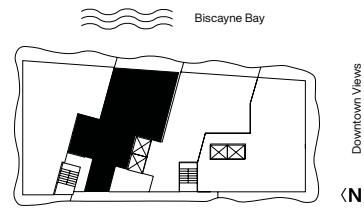
Total Area
2,577 sf / 239 m²

The dimensions stated for this unit floor plan are approximate because there are various recognized methods for calculating the square footage of a unit. The square footage stated here is calculated from the exterior boundaries of the exterior walls to the centerline of interior demising walls without deductions for cutouts, curves, or architectural features. This method typically results in quoted dimensions greater than the dimensions that would be determined by using other accepted methods. The definition of "Unit" and the calculation method to be relied upon is set forth in the Developer's Prospectus and the method set forth in the Developer's Prospectus may result in a square footage calculation less than the method used here. Consult the Developer's Prospectus for information on what is offered with the Unit and the calculation of the Unit square footage and dimensions.

The dimensions stated for this unit floor plan are approximate because there are various recognized methods for calculating the square footage of a unit. The square footage stated here is calculated from the exterior boundaries of the exterior walls to the centerline of interior demising walls without deductions for cutouts, curves, or architectural features. This method typically results in quoted dimensions greater than the dimensions that would be determined by using other accepted methods. The definition of "Unit" and the calculation method to be relied upon is set forth in the Developer's Prospectus and the method set forth in the Developer's Prospectus may result in a square footage calculation less than the method used here. Consult the Developer's Prospectus for information on what is offered with the Unit and the calculation of the Unit square footage and dimensions.

Cielo Tre

Floors 48 through 51

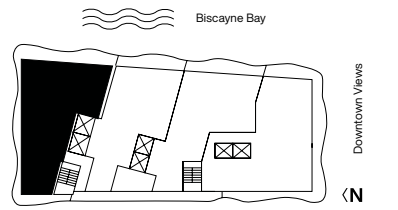


3 Bedrooms	AC Area	Outdoor Area	Total Area
3.5 Bathrooms	2,443 sf / 227 m ²	249 sf / 23 m ²	2,692 sf / 250 m ²
Den			

The dimensions stated for this unit floor plan are approximate because there are various recognized methods for calculating the square footage of a unit. The square footage stated here is calculated from the exterior boundaries of the exterior walls to the centerline of interior demising walls without deductions for cutouts, curves, or architectural features. This method typically results in quoted dimensions greater than the dimensions that would be determined by using other accepted methods. The definition of "Unit" and the calculation method to be relied upon is set forth in the Developer's Prospectus and the method set forth in the Developer's Prospectus may result in a square footage calculation less than the method used here. Consult the Developer's Prospectus for information on what is offered with the Unit and the calculation of the Unit square footage and dimensions.

Cielo Quattro

Floors 48 through 51



4 Bedrooms	AC Area	Outdoor Area	Total Area
4.5 Bathrooms	2,735 sf / 254 m ²	821 sf / 24 m ²	3,556 sf / 278 m ²

The dimensions stated for this unit floor plan are approximate because there are various recognized methods for calculating the square footage of a unit. The square footage stated here is calculated from the exterior boundaries of the exterior walls to the centerline of interior demising walls without deductions for cutouts, curves, or architectural features. This method typically results in quoted dimensions greater than the dimensions that would be determined by using other accepted methods. The definition of "Unit" and the calculation method to be relied upon is set forth in the Developer's Prospectus and the method set forth in the Developer's Prospectus may result in a square footage calculation less than the method used here. Consult the Developer's Prospectus for information on what is offered with the Unit and the calculation of the Unit square footage and dimensions.

