

  
Sunset  
Collection

Residence

08

2 BEDROOMS + DEN  
2.5 BATHROOMS

RESIDENCES

308, 408, 508 & 608

INTERIOR

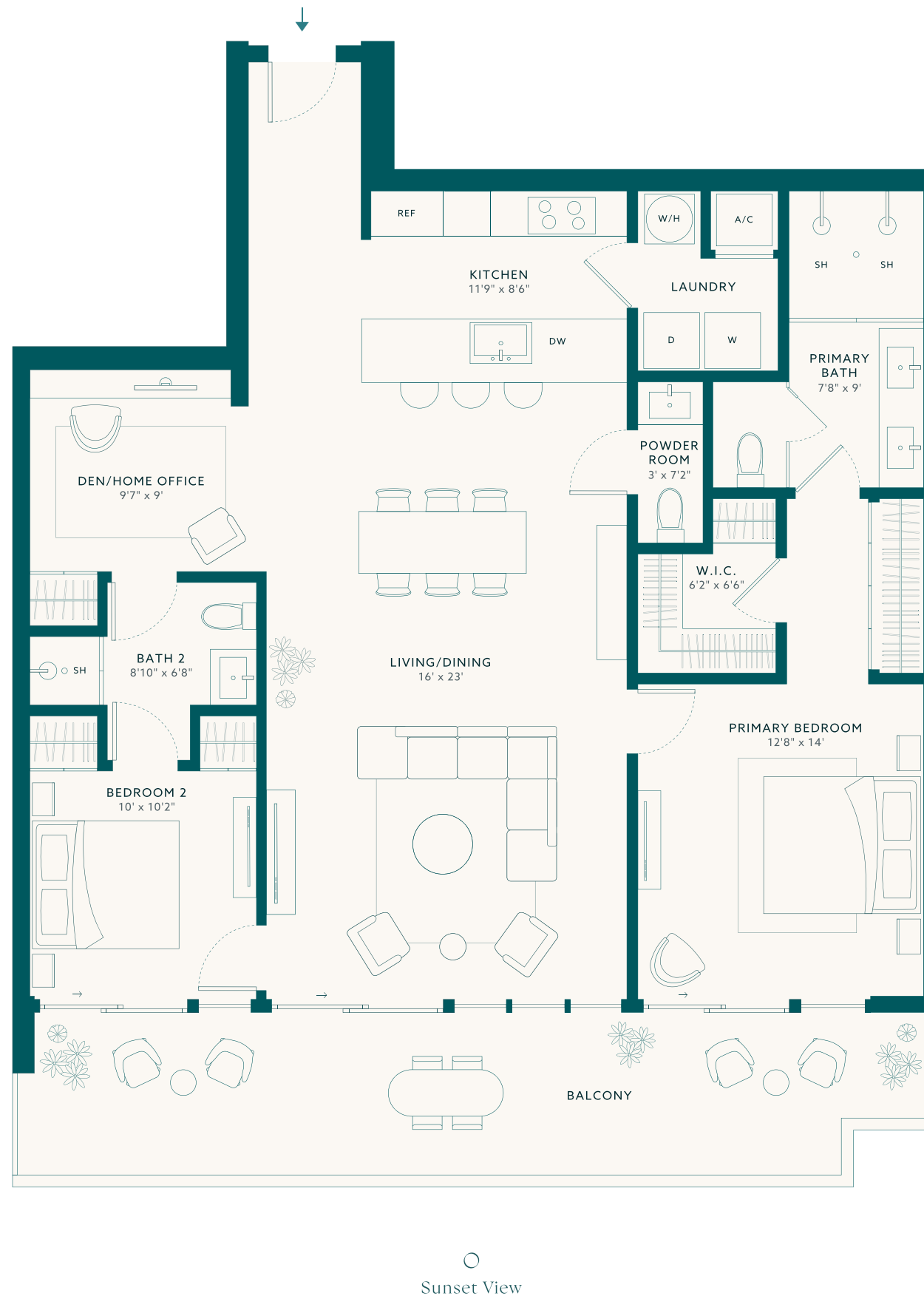
1,432 SQ FT ~ 133 SQ M

EXTERIOR

301 SQ FT ~ 28 SQ M

TOTAL

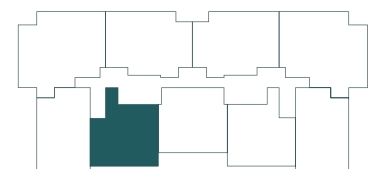
1,733 SQ FT ~ 161 SQ M



LA BAIA  
NORTH



WATERFRONT VIEW



SUNSET VIEW

Stated dimensions are measured to the exterior boundaries of the exterior walls and the centerline of interior demising walls and in fact vary from the dimensions that would be determined by using the description and definition of the "Unit" set forth in the Declaration (which generally only includes the interior airspace between the perimeter walls and excludes interior structural components). For your reference, the area of the Unit, determined in accordance with those defined unit boundaries, is 1,432 square footage. Note that measurements of rooms set forth on this floor plan are generally taken at the greatest points of each given room (as if the room were a perfect rectangle), without regard for any cutouts. Accordingly, the area of the actual room will typically be smaller than the product obtained by multiplying the stated length times width. All dimensions are approximate and may vary with actual construction, and all floor plans and development plans are subject to change.





Sunset  
Collection

Residence

10

2 BEDROOMS + DEN  
2.5 BATHROOMS

RESIDENCES

310, 410, 510 & 610

INTERIOR

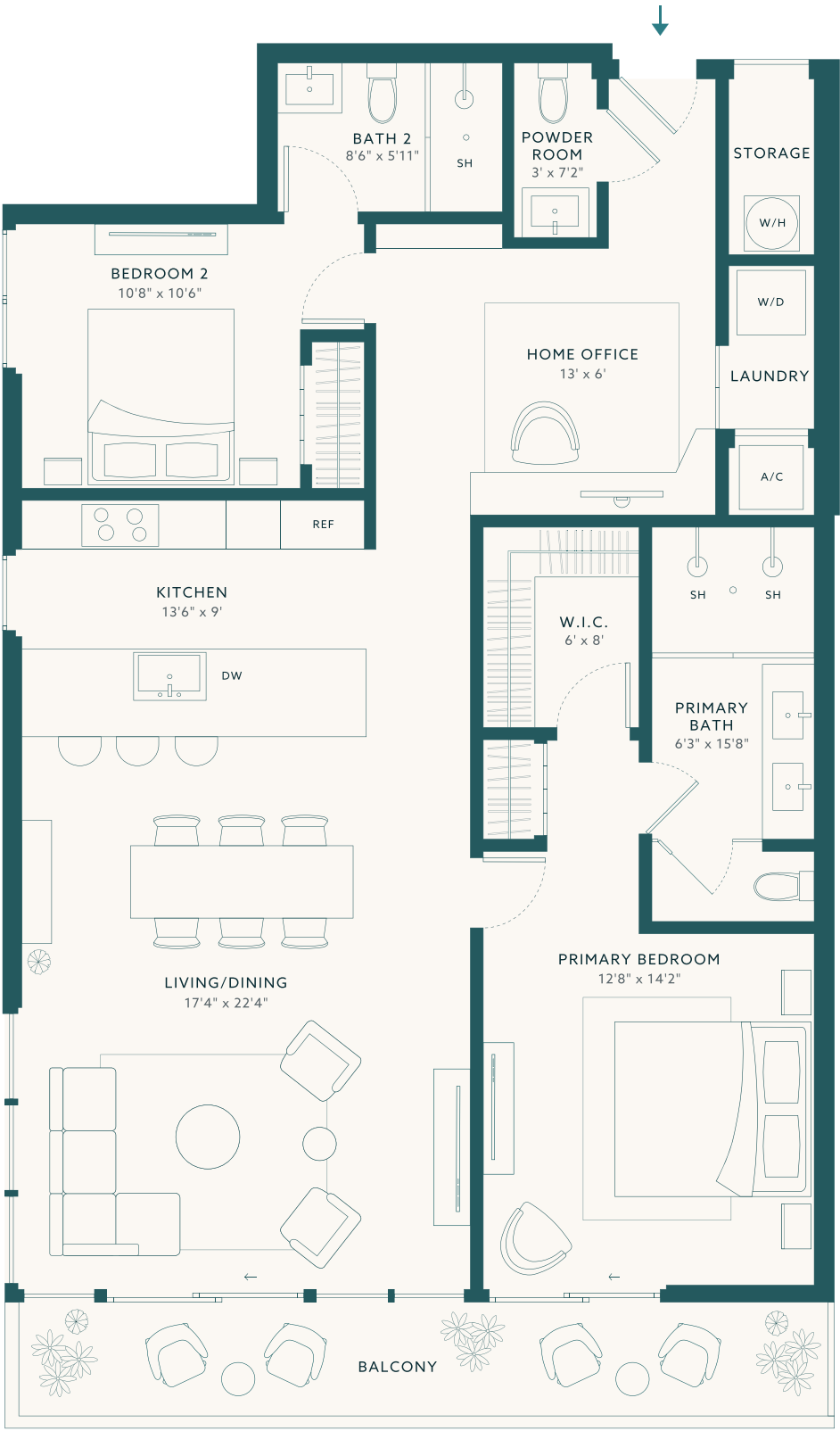
1,450 SQ FT ~ 135 SQ M

EXTERIOR

168 SQ FT ~ 15 SQ M

TOTAL

1,618 SQ FT ~ 150 SQ M

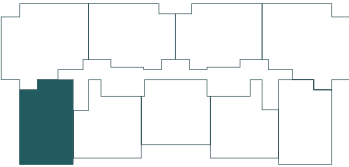


  
Sunset View

LA BAIA  
NORTH



WATERFRONT VIEW



SUNSET VIEW

Stated dimensions are measured to the exterior boundaries of the exterior walls and the centerline of interior demising walls and in fact vary from the dimensions that would be determined by using the description and definition of the "Unit" set forth in the Declaration (which generally only includes the interior airspace between the perimeter walls and excludes interior structural components). For your reference, the area of the Unit, determined in accordance with those defined unit boundaries, is 1,450 square footage. Note that measurements of rooms set forth on this floor plan are generally taken at the greatest points of each given room (as if the room were a perfect rectangle), without regard for any cutouts. Accordingly, the area of the actual room will typically be smaller than the product obtained by multiplying the stated length times width. All dimensions are approximate and may vary with actual construction, and all floor plans and development plans are subject to change.



  
Sunset  
Collection

Lower Penthouse  
Residence

08

Level 7

2 BEDROOMS + DEN  
3 BATHROOMS

INTERIOR

1,616 SQ FT ~ 150 SQ M

EXTERIOR

340 SQ FT ~ 31 SQ M

TOTAL

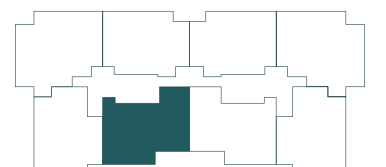
1,956 SQ FT ~ 181 SQ M



LA BAIA  
NORTH



WATERFRONT VIEW



SUNSET VIEW

Stated dimensions are measured to the exterior boundaries of the exterior walls and the centerline of interior demising walls and in fact vary from the dimensions that would be determined by using the description and definition of the "Unit" set forth in the Declaration (which generally only includes the interior airspace between the perimeter walls and excludes interior structural components). For your reference, the area of the Unit, determined in accordance with those defined unit boundaries, is 1,616 square footage. Note that measurements of rooms set forth on this floor plan are generally taken at the greatest points of each given room (as if the room were a perfect rectangle), without regard for any cutouts. Accordingly, the area of the actual room will typically be smaller than the product obtained by multiplying the stated length times width. All dimensions are approximate and may vary with actual construction, and all floor plans and development plans are subject to change.





Waterfront  
Collection

Residence

503

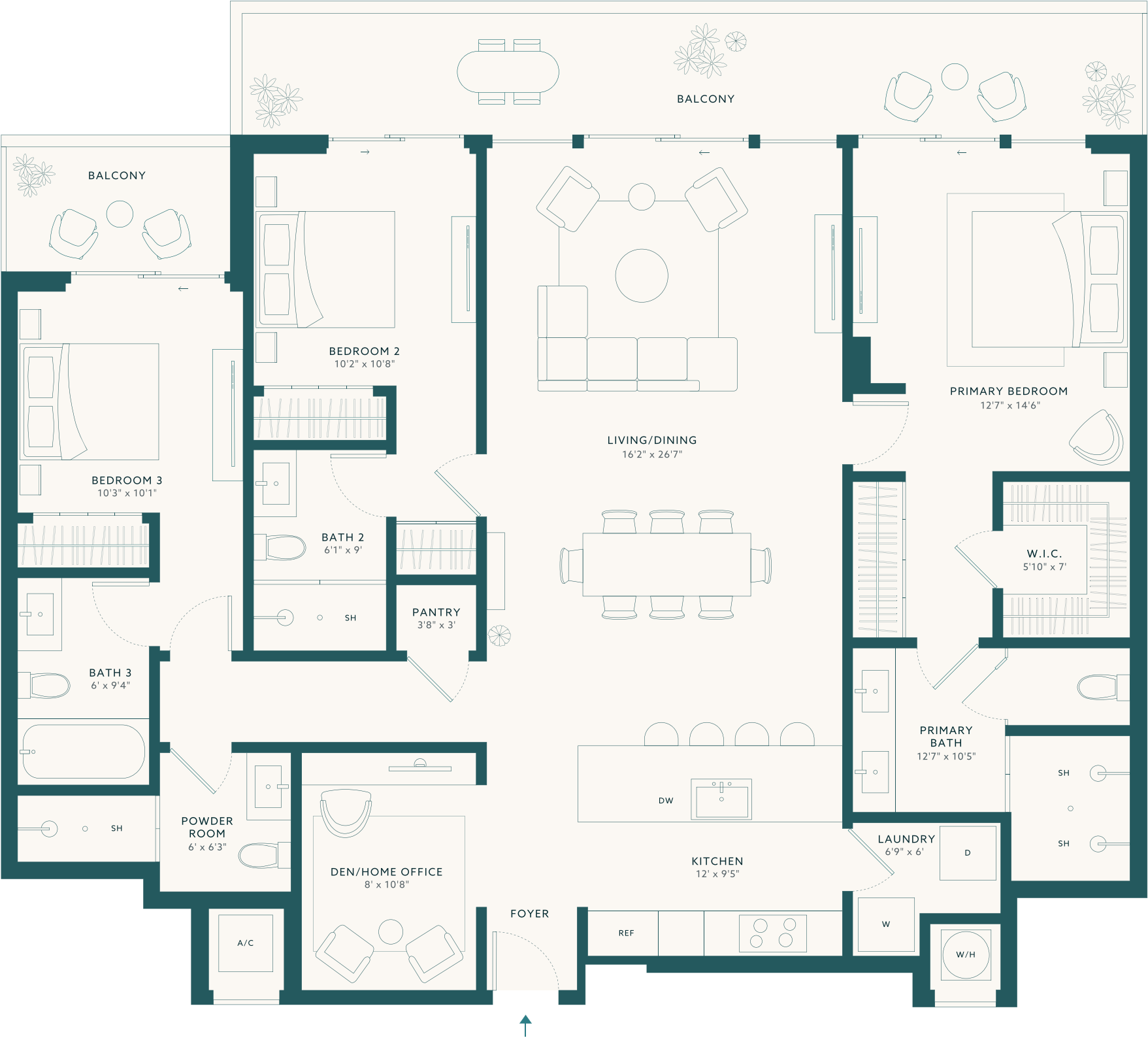
3 BEDROOMS + DEN  
4 BATHROOMS

INTERIOR  
1,811 SQ FT ~ 168 SQ M

EXTERIOR  
307 SQ FT ~ 28 SQ M

TOTAL  
2,118 SQ FT ~ 196 SQ M

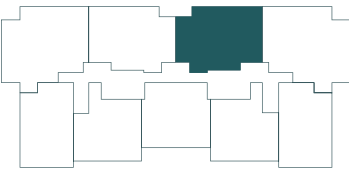
Waterfront View



LA BAIA  
NORTH



WATERFRONT VIEW



SUNSET VIEW

Stated dimensions are measured to the exterior boundaries of the exterior walls and the centerline of interior demising walls and in fact vary from the dimensions that would be determined by using the description and definition of the "Unit" set forth in the Declaration (which generally only includes the interior airspace between the perimeter walls and excludes interior structural components). For your reference, the area of the Unit, determined in accordance with those defined unit boundaries, is 1,811 square footage. Note that measurements of rooms set forth on this floor plan are generally taken at the greatest points of each given room (as if the room were a perfect rectangle), without regard for any cutouts. Accordingly, the area of the actual room will typically be smaller than the product obtained by multiplying the stated length times width. All dimensions are approximate and may vary with actual construction, and all floor plans and development plans are subject to change.



  
Sunset  
Collection

Upper Penthouse  
Residence

10

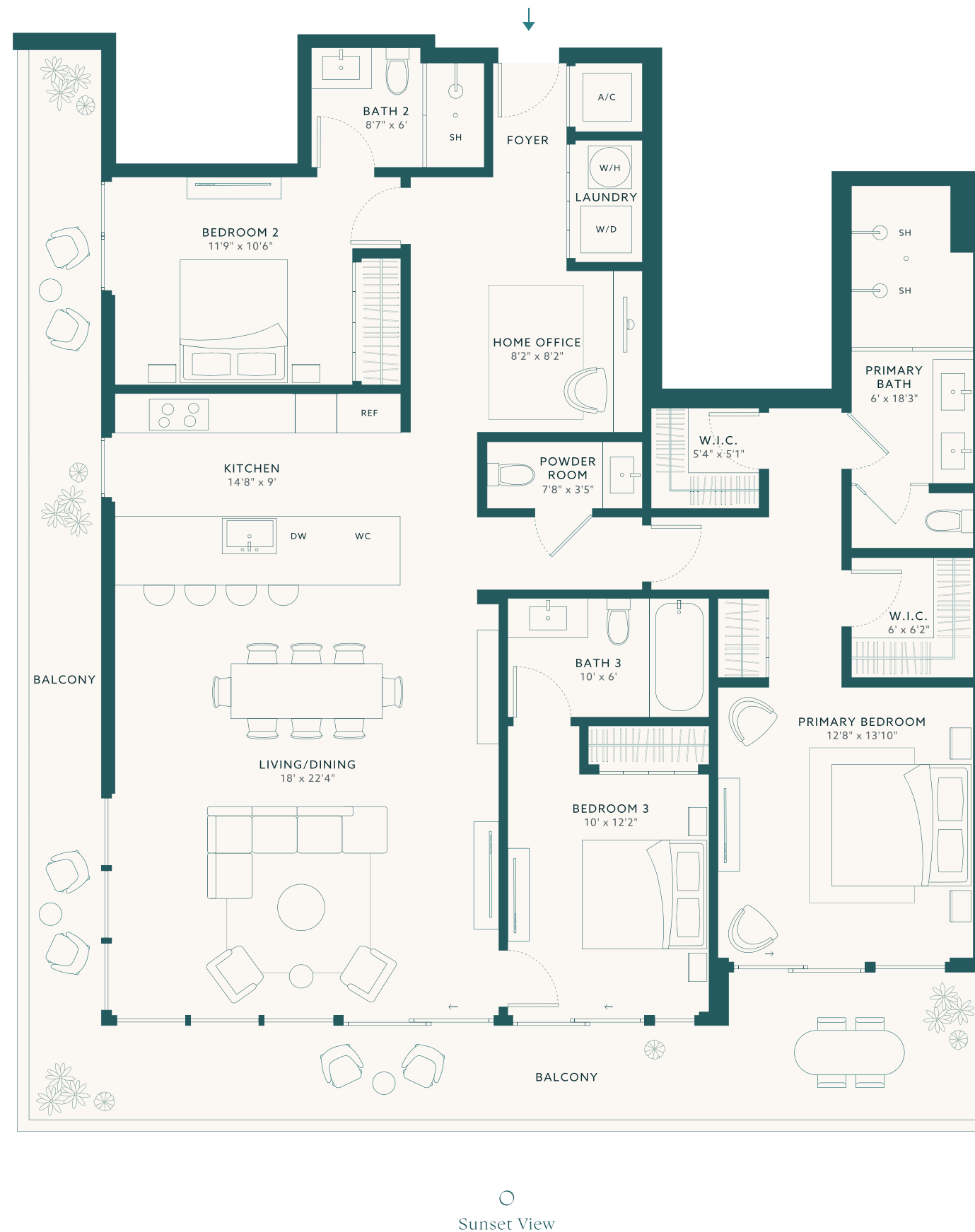
Level 8

3 BEDROOMS + DEN  
3.5 BATHROOMS

INTERIOR  
1,834 SQ FT ~ 170 SQ M

EXTERIOR  
540 SQ FT ~ 50 SQ M

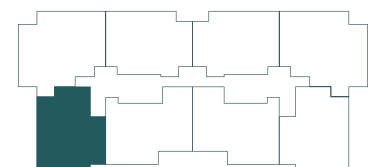
TOTAL  
2,374 SQ FT ~ 220 SQ M



LA BAIA  
NORTH



WATERFRONT VIEW



SUNSET VIEW

Stated dimensions are measured to the exterior boundaries of the exterior walls and the centerline of interior demising walls and in fact vary from the dimensions that would be determined by using the description and definition of the "Unit" set forth in the Declaration (which generally only includes the interior airspace between the perimeter walls and excludes interior structural components). For your reference, the area of the Unit, determined in accordance with those defined unit boundaries, is 1,834 square footage. Note that measurements of rooms set forth on this floor plan are generally taken at the greatest points of each given room (as if the room were a perfect rectangle), without regard for any cutouts. Accordingly, the area of the actual room will typically be smaller than the product obtained by multiplying the stated length times width. All dimensions are approximate and may vary with actual construction, and all floor plans and development plans are subject to change.





# Waterfront Collection

Residence

# 01

Option A

4 BEDROOMS  
4.5 BATHROOMS

Option B

3 BEDROOMS + DEN  
4.5 BATHROOMS

## RESIDENCES

301, 401, 501 & 601

## INTERIOR

2,111 SQ FT ~ 196 SQ M

## EXTERIOR

321 SQ FT ~ 29 SQ M

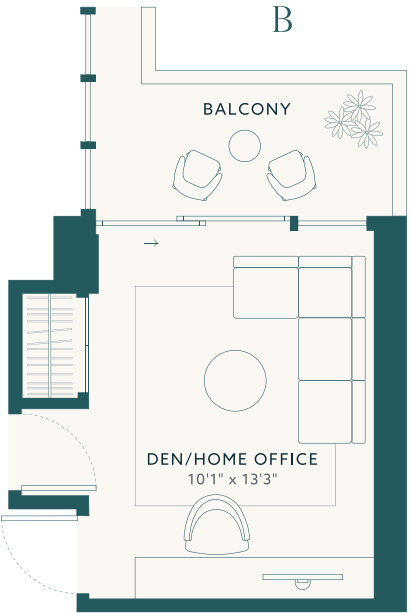
## TOTAL

2,432 SQ FT ~ 225 SQ M

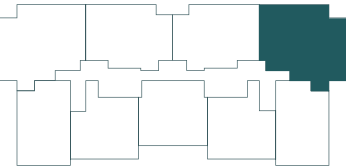
Waterfront View



LA BAIA  
NORTH



WATERFRONT VIEW



SUNSET VIEW

Stated dimensions are measured to the exterior boundaries of the exterior walls and the centerline of interior demising walls and in fact vary from the dimensions that would be determined by using the description and definition of the "Unit" set forth in the Declaration (which generally only includes the interior airspace between the perimeter walls and excludes interior structural components). For your reference, the area of the Unit, determined in accordance with those defined unit boundaries, is 2,111 square footage. Note that measurements of rooms set forth on this floor plan are generally taken at the greatest points of each given room (as if the room were a perfect rectangle), without regard for any cutouts. Accordingly, the area of the actual room will typically be smaller than the product obtained by multiplying the stated length times width. All dimensions are approximate and may vary with actual construction, and all floor plans and development plans are subject to change.

