

THE SHORECLUB

INTERIOR FINISHES

PRIVATE
COLLECTION



INTERIOR FINISHES

ARTIST'S CONCEPTUAL RENDERING
SEE DISCLAIMERS PAGE



NATURAL STONE FLOORING AND WOOD CABINETS



ARTIST'S CONCEPTUAL RENDERING
SEE DISCLAIMERS PAGE

KITCHEN FINISHES

COUNTER
WHITE MARBLE STONE, HONED

FLOORING
NATURAL STONE HONED



COUNTER



FLOORING

METAL CABINETRY & BACKSPLASH
POLISHED NICKEL

CABINETRY WOOD
EUROPEAN OAK PANELING



METAL CABINETRY & BACKSPLASH



CABINETRY WOOD

CABINETRY GLASS
FROSTED FLUTED GLASS

FIXTURES & HARDWARE
POLISHED NICKEL



CABINETRY GLASS



POLISHED NICKEL

CERTAIN ITEMS, SUCH AS TILE, MARBLE, STONE, GRANITE, CABINETS, WOOD, STAIN, GROUT, WALL AND CEILING TEXTURES, ARE SUBJECT TO SIZE AND COLOR VARIATIONS, GRAIN AND QUALITY VARIATIONS, AND MAY VARY IN ACCORDANCE WITH PRICE, AVAILABILITY AND CHANGES BY MANUFACTURER FROM THOSE SHOWN. IF CIRCUMSTANCES ARISE WHICH, IN DEVELOPERS OPINION, WARRANT CHANGES OF SUPPLIERS, MANUFACTURERS, BRAND NAMES, MODELS OR ITEMS, OR IF DEVELOPER ELECTS TO OMIT CERTAIN ITEMS, DEVELOPER MAY MODIFY THE STANDARD FEATURES OR MAKE SUBSTITUTIONS FOR EQUIPMENT, MATERIAL, APPLIANCES, BRANDS, MODELS, ETC., WITH ITEMS WHICH IN DEVELOPERS OPINION ARE OF EQUAL OR BETTER QUALITY REGARDLESS OF COST.

BECAUSE WOOD IS A NATURAL PRODUCT, EVERY PIECE HAS A UNIQUE COLOR AND APPEARANCE, AND EVERY INSTALLED FLOOR WILL HAVE ITS OWN DISTINCTIVE VISUAL CHARACTER. PHOTOGRAPHS, SAMPLES AND WEBSITE IMAGES CAN OFFER AN IMPRESSION OF THE PRODUCT, BUT THEY MAY NOT BE REPRESENTATIVE OF THE FULL RANGE OF COLOR, KNOTS, TEXTURE AND GRAIN VARIATIONS WHICH CAN EXIST IN THE PRODUCT ITSELF AS INSTALLED. WOOD IS SUBJECT TO WEATHERING AND FADING AND AS SUCH THE COLORATION MAY VARY OVER TIME. ADDITIONALLY, ALL WOOD FLOORING WILL ACCLIMATE TO THE TEMPERATURE AND HUMIDITY IN THE UNIT AND SEASONAL MOVEMENT IN A WOOD FLOOR IS TO BE EXPECTED, AS WOOD IS A PRODUCT OF NATURE AND WILL EXPAND AND CONTRACT WITH CHANGES IN HUMIDITY AND TEMPERATURE. GAPS OFTEN APPEAR BETWEEN BOARDS DURING COLDER PERIODS AND TIGHTEN IN WARMER TEMPERATURES MINIMIZING HEAT AND HUMIDITY FLUCTUATIONS IS REQUIRED TO PRESERVE THE CONDITION OF THE WOOD. EVEN UNDER IDEAL CONDITIONS, WOOD IS SUBJECT TO WARPING, BOWING AND CUPPING.

KITCHEN APPLIANCES
& FITTINGS

REFRIGERATION
30" REFRIGERATOR
INTEGRATED FINISHED PANEL
GAGGENAU

FREEZER
30" FREEZER
INTEGRATED FINISHED PANEL
GAGGENAU

WINE STORAGE
24" UNDER-COUNTER WINE COOLER
INTEGRATED FINISHED PANEL
GAGGENAU



REFRIGERATION



FREEZER



WINE STORAGE



FAUCET

FAUCET
GOOSENECK INTEGRATED
PULL SPRAY KITCHEN FAUCET
POLISHED METAL FINISH

SINK
UNDERMOUNT INTEGRATED
KITCHEN SINK
STAINLESS STEEL

DISHWASHER
24" DISHWASHER
INTEGRATED FINISHED PANEL
GAGGENAU



SINK



DISHWASHER

KITCHEN APPLIANCES
& FITTINGS

COOKTOP
36" INDUCTION COOKTOP
GAGGENAU

FULL-SIZE OVEN
30" CONTEMPORARY STAINLESS STEEL
BUILT-IN SINGLE OVEN
GAGGENAU

STEAM OVEN
30" COMBI-STEAM OVEN
GAGGENAU

MICROWAVE
30" COMBI-MICROWAVE OVEN
GAGGENAU



COOKTOP



FULL-SIZE OVEN



STEAM OVEN



MICROWAVE





ARTIST'S CONCEPTUAL RENDERING
SEE DISCLAIMERS PAGE

PRIMARY BATHROOM FINISHES

CABINETRY & PANELING
EUROPEAN OAK PANELING

MIRROR FINISH
CLEAR MIRROR

COUNTER, WALLS, & FLOORING
WHITE MARBLE STONE, HONED

SHOWER GLASS
CLEAR GLASS WITH POLISHED TRIM

FIXTURES & HARDWARE
POLISHED NICKEL



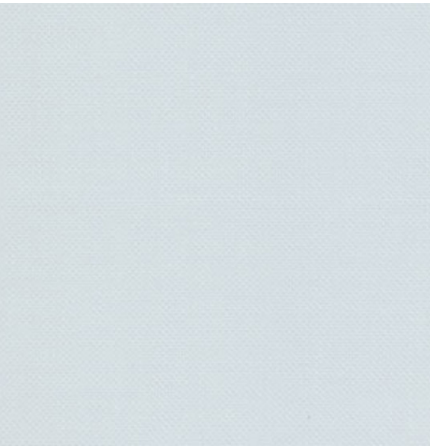
CABINETRY



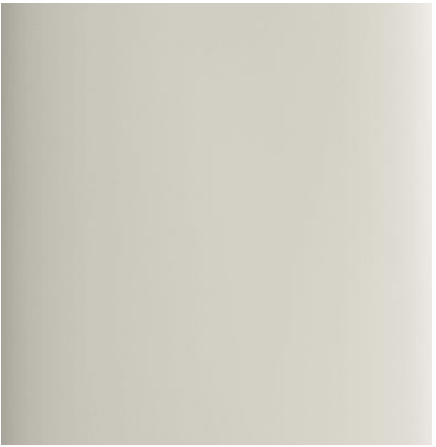
MIRROR FINISH



COUNTER, WALLS, & FLOORING



SHOWER GLASS



POLISHED NICKEL

CERTAIN ITEMS, SUCH AS TILE, MARBLE, STONE, GRANITE, CABINETS, WOOD, STAIN, GROUT, WALL AND CEILING TEXTURES, ARE SUBJECT TO SIZE AND COLOR VARIATIONS, GRAIN AND QUALITY VARIATIONS, AND MAY VARY IN ACCORDANCE WITH PRICE, AVAILABILITY AND CHANGES BY MANUFACTURER FROM THOSE SHOWN. IF CIRCUMSTANCES ARISE WHICH, IN DEVELOPERS OPINION, WARRANT CHANGES OF SUPPLIERS, MANUFACTURERS, BRAND NAMES, MODELS OR ITEMS, OR IF DEVELOPER ELECTS TO OMIT CERTAIN ITEMS, DEVELOPER MAY MODIFY THE STANDARD FEATURES OR MAKE SUBSTITUTIONS FOR EQUIPMENT, MATERIAL, APPLIANCES, BRANDS, MODELS, ETC., WITH ITEMS WHICH IN DEVELOPERS OPINION ARE OF EQUAL OR BETTER QUALITY REGARDLESS OF COST.

BECAUSE WOOD IS A NATURAL PRODUCT, EVERY PIECE HAS A UNIQUE COLOR AND APPEARANCE, AND EVERY INSTALLED FLOOR WILL HAVE ITS OWN DISTINCTIVE VISUAL CHARACTER. PHOTOGRAPHS, SAMPLES AND WEBSITE IMAGES CAN OFFER AN IMPRESSION OF THE PRODUCT, BUT THEY MAY NOT BE REPRESENTATIVE OF THE FULL RANGE OF COLOR, KNOTS, TEXTURE AND GRAIN VARIATIONS WHICH CAN EXIST IN THE PRODUCT ITSELF AS INSTALLED. WOOD IS SUBJECT TO WEATHERING AND FADING AND AS SUCH THE COLORATION MAY VARY OVER TIME. ADDITIONALLY, ALL WOOD FLOORINGS WILL ACCLIMATE TO THE TEMPERATURE AND HUMIDITY IN THE UNIT AND SEASONAL MOVEMENT IN A WOOD FLOOR IS TO BE EXPECTED, AS WOOD IS A PRODUCT OF NATURE AND WILL EXPAND AND CONTRACT WITH CHANGES IN HUMIDITY AND TEMPERATURE. GAPS OFTEN APPEAR BETWEEN BOARDS DURING COLDER PERIODS AND TIGHTEN IN WARMER TEMPERATURES MINIMIZING HEAT AND HUMIDITY FLUCTUATIONS IS REQUIRED TO PRESERVE THE CONDITION OF THE WOOD. EVEN UNDER IDEAL CONDITIONS, WOOD IS SUBJECT TO WARPING, BOWING AND CUPPING.

PRIMARY BATHROOM
FITTINGS

BATHTUB
SOAKING TUB

BATHTUB FILLER
SINGLE-LEVER TUB MIXER
FREESTANDING WITH HAND
SHOWER SET
POLISHED METAL FINISH

SHOWER CONTROLS
3 CONTROL
POLISHED METAL FINISH



BATHTUB



BATHTUB FILLER



SHOWER CONTROLS



HANDHELD SHOWER



SHOWER HEADS



TOWEL BAR & HOOKS

HANDHELD SHOWER
WALL MOUNTED HAND SHOWER
POLISHED METAL FINISH

SHOWER HEADS
RAIN SHOWER CEILING-MOUNTED
WITH BODY SPRAY
POLISHED METAL FINISH

TOWEL BAR & HOOKS
WALL MOUNT LINEAR TOWEL BAR
AND ROBE HOOKS
POLISHED METAL FINISH

PRIMARY BATHROOM
FITTINGS

TOILET
WASHLET FLOOR MOUNT TOILET
MATTE WHITE FINISH

TOILET ROLL HOLDER
TISSUE HOLDER WALL MOUNT
POLISHED METAL FINISH

SINK FAUCET
WALL-MOUNTED FAUCET
POLISHED METAL FINISH

SINK
UNDERCOUNTER PORCELAIN SINK
WHITE CERAMIC FINISH



TOILET



TOILET ROLL HOLDER



SINK FAUCET



SINK



ARTIST'S CONCEPTUAL RENDERING
SEE DISCLAIMERS PAGE

POWDER ROOM FINISHES

CABINETRY & PANELING
EUROPEAN OAK PANELING

MIRROR FINISH
CLEAR MIRROR

VANITY & FLOORING
NATURAL STONE

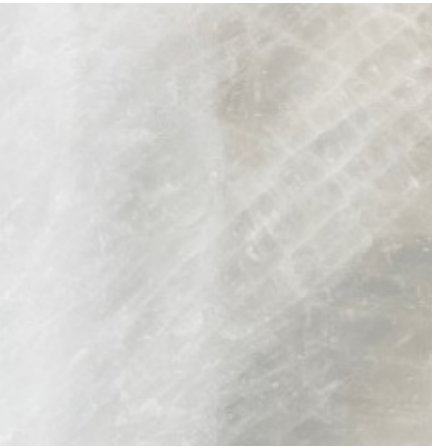
FIXTURES & HARDWARE
POLISHED NICKEL



CABINETRY



MIRROR FINISH



COUNTER, WALLS & FLOORING



POLISHED NICKEL

CERTAIN ITEMS, SUCH AS TILE, MARBLE, STONE, GRANITE, CABINETS, WOOD, STAIN, GROUT, WALL AND CEILING TEXTURES, ARE SUBJECT TO SIZE AND COLOR VARIATIONS, GRAIN AND QUALITY VARIATIONS, AND MAY VARY IN ACCORDANCE WITH PRICE, AVAILABILITY AND CHANGES BY MANUFACTURER FROM THOSE SHOWN. IF CIRCUMSTANCES ARISE WHICH, IN DEVELOPERS OPINION, WARRANT CHANGES OF SUPPLIERS, MANUFACTURERS, BRAND NAMES, MODELS OR ITEMS, OR IF DEVELOPER ELECTS TO OMIT CERTAIN ITEMS, DEVELOPER MAY MODIFY THE STANDARD FEATURES OR MAKE SUBSTITUTIONS FOR EQUIPMENT, MATERIAL, APPLIANCES, BRANDS, MODELS, ETC., WITH ITEMS WHICH IN DEVELOPERS OPINION ARE OF EQUAL OR BETTER QUALITY REGARDLESS OF COST.

BECAUSE WOOD IS A NATURAL PRODUCT, EVERY PIECE HAS A UNIQUE COLOR AND APPEARANCE, AND EVERY INSTALLED FLOOR WILL HAVE ITS OWN DISTINCTIVE VISUAL CHARACTER. PHOTOGRAPHS, SAMPLES AND WEBSITE IMAGES CAN OFFER AN IMPRESSION OF THE PRODUCT, BUT THEY MAY NOT BE REPRESENTATIVE OF THE FULL RANGE OF COLOR, KNOTS, TEXTURE AND GRAIN VARIATIONS WHICH CAN EXIST IN THE PRODUCT ITSELF AS INSTALLED. WOOD IS SUBJECT TO WEATHERING AND FADING AND AS SUCH THE COLORATION MAY VARY OVER TIME. ADDITIONALLY, ALL WOOD FLOORINGS WILL ACCLIMATE TO THE TEMPERATURE AND HUMIDITY IN THE UNIT AND SEASONAL MOVEMENT IN A WOOD FLOOR IS TO BE EXPECTED, AS WOOD IS A PRODUCT OF NATURE AND WILL EXPAND AND CONTRACT WITH CHANGES IN HUMIDITY AND TEMPERATURE. GAPS OFTEN APPEAR BETWEEN BOARDS DURING COLDER PERIODS AND TIGHTEN IN WARMER TEMPERATURES MINIMIZING HEAT AND HUMIDITY FLUCTUATIONS IS REQUIRED TO PRESERVE THE CONDITION OF THE WOOD. EVEN UNDER IDEAL CONDITIONS, WOOD IS SUBJECT TO WARPING, BOWING AND CUPPING.

POWDER ROOM
FITTINGS

TOILET
TOTO FLOOR MOUNT TOILET
MATTE WHITE FINISH

SINK FAUCET
DECK MOUNTED FAUCET
POLISHED METAL FINISH



TOILET



SINK FAUCET

INTERIOR DOOR
FINISHES & HARDWARE



PANEL FINISH



LEVER HANDLE

PANEL FINISH
NATURAL WOOD FINISH

LEVER HANDLE
CUSTOM DESIGNED FROM
ROBERT A.M. STERN

DISCLAIMER



ORAL REPRESENTATIONS CANNOT BE RELIED UPON AS CORRECTLY STATING THE REPRESENTATIONS OF THE DEVELOPER. FOR CORRECT REPRESENTATIONS, MAKE REFERENCE TO THIS BROCHURE AND TO THE DOCUMENTS REQUIRED BY SECTION 718.503, FLORIDA STATUTES, TO BE FURNISHED BY A DEVELOPER TO A BUYER OR LESSEE.

These materials are not intended to be an offer to sell, or solicitation to buy a unit in the condominium. Such an offering shall only be made pursuant to the prospectus (offering circular) for the condominium and no statements should be relied upon unless made in the prospectus or in the applicable purchase agreement. In no event shall any solicitation, offer or sale of a unit in the condominium be made in, or to residents of, any state or country in which such activity would be unlawful.

The items depicted and described herein are intended to illustrate the type of fixture and/or item of finish that is anticipated to be used in various areas with the Units. If circumstances arise which, in the Developer's opinion, warrant changes of suppliers, manufacturers, brand names or items, or if the Developer elects to omit certain items, the Developer may make substitutions for equipment, material, items, appliances, finishes and/or fixtures with items which in the Developer's opinion are of equal or better quality (regardless of cost). All depicted items are based upon today's designs, models and offerings, and may vary from designs, models and offerings at the time of purchase for installation in the Unit. Items listed as options, may not be options to be selected by purchaser, but may only be among options to be selected from by Developer. Certain items depicted or described herein are optional upgrades which may not be included as part of the standard finishes of the Unit. Consult the plans and specifications of your Unit for details. Furniture is not included in the sale of a Unit and is for decoartion/display purposes only. If buyer is given an opportunity to select from among options, selections shall be governed by the purchase agreement. Additionally, the Developer has the right to substitute or change materials and/or stain colors utilized in floor, wall, door, cabinetry, countertops and other items of finish. Certain of the foregoing items are subject to size and color variations, grain and quality variations, and may vary in accordance with price, availability and changes by manufacturer from those shown in the models or in illustrations or included herein. Certain colors and/or patterns described and/or as shown herein, including, but not limited to, stone, marble, granite, cabinetry, countertops, doors and wood stain, will weather and fade and may not be duplicated precisely. All exposed surfaces are subject to variations in color, unevenness, and non-structural changes and cracks, and the Developer will not be responsible for any repair, replacement, or damages due to any of such causes.

SEE DISCLAIMERS PAGE

CERTAIN ITEMS, SUCH AS TILE, MARBLE, STONE, GRANITE, CABINETS, WOOD, STAIN, GROUT, WALL AND CEILING TEXTURES, ARE SUBJECT TO SIZE AND COLOR VARIATIONS, GRAIN AND QUALITY VARIATIONS, AND MAY VARY IN ACCORDANCE WITH PRICE, AVAILABILITY AND CHANGES BY MANUFACTURER FROM THOSE SHOWN. IF CIRCUMSTANCES ARISE WHICH, IN DEVELOPERS OPINION, WARRANT CHANGES OF SUPPLIERS, MANUFACTURERS, BRAND NAMES, MODELS OR ITEMS, OR IF DEVELOPER ELECTS TO OMIT CERTAIN ITEMS, DEVELOPER MAY MODIFY THE STANDARD FEATURES OR MAKE SUBSTITUTIONS FOR EQUIPMENT, MATERIAL, APPLIANCES, BRANDS, MODELS, ETC., WITH ITEMS WHICH IN DEVELOPERS OPINION ARE OF EQUAL OR BETTER QUALITY REGARDLESS OF COST.

BECAUSE WOOD IS A NATURAL PRODUCT, EVERY PIECE HAS A UNIQUE COLOR AND APPEARANCE, AND EVERY INSTALLED FLOOR WILL HAVE ITS OWN DISTINCTIVE VISUAL CHARACTER. PHOTOGRAPHS, SAMPLES AND WEBSITE IMAGES CAN OFFER AN IMPRESSION OF THE PRODUCT, BUT THEY MAY NOT BE REPRESENTATIVE OF THE FULL RANGE OF COLOR, KNOTS, TEXTURE AND GRAIN VARIATIONS WHICH CAN EXIST IN THE PRODUCT ITSELF AS INSTALLED. WOOD IS SUBJECT TO WEATHERING AND FADING AND AS SUCH THE COLORATION MAY VARY OVER TIME. ADDITIONALLY, ALL WOOD FLOORING WILL ACCLIMATE TO THE TEMPERATURE AND HUMIDITY IN THE UNIT AND SEASONAL MOVEMENT IN A WOOD FLOOR IS TO BE EXPECTED, AS WOOD IS A PRODUCT OF NATURE AND WILL EXPAND AND CONTRACT WITH CHANGES IN HUMIDITY AND TEMPERATURE. GAPS OFTEN APPEAR BETWEEN BOARDS DURING COLDER PERIODS AND TIGHTEN IN WARMER TEMPERATURES MINIMIZING HEAT AND HUMIDITY FLUCTUATIONS IS REQUIRED TO PRESERVE THE CONDITION OF THE WOOD. EVEN UNDER IDEAL CONDITIONS, WOOD IS SUBJECT TO WARPING, BOWING AND CUPPING.

1901 COLLINS AVENUE, MIAMI BEACH, FL 33139

