

# INTERIORS: AMENITIES

**The Standard**

**RESIDENCES**

**MIDTOWN MIAMI**

A PLACE TO **BELONG**

A PLACE TO BE **AUTHENTIC**

A PLACE THAT IS **FOREVER YOUNG**

## HOTEL



**RELEASE**



**RECHARGE**



## RESIDENCES



MI CASA ES TU CASA

MI CASA ES TU CASA

MI CASA ES TU CASA

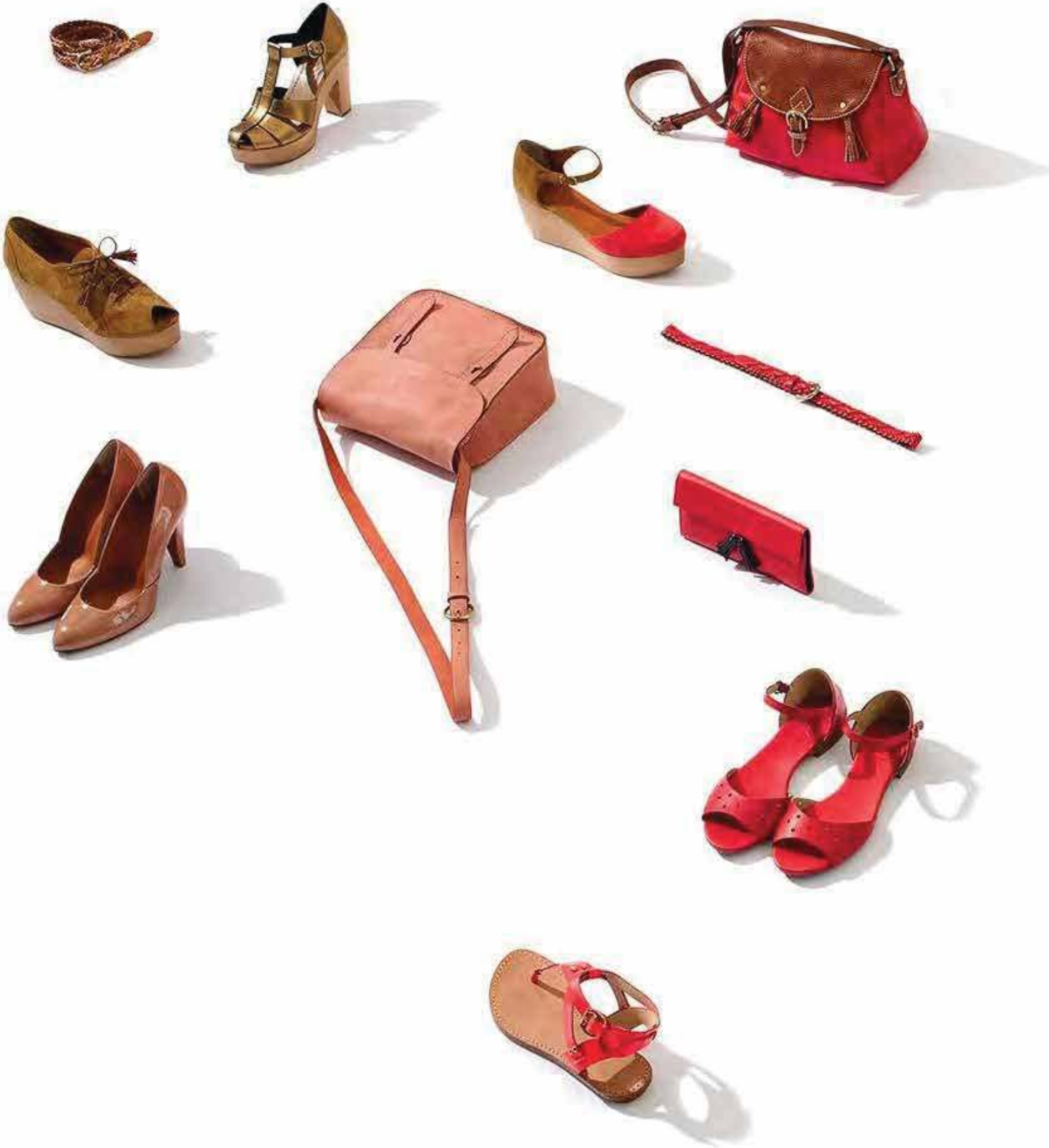
MI CASA ES TU CASA

MI CASA ES TU CASA

MI CASA ES TU CASA

MI CASA ES TU CASA

**MI CASA ES TU CASA**







SEE THROUGH THE EYES OF THIS WORLD TRAVELER

AND THEIR COLLECTION OF MEMORIES



2006  
The Standard Spa,  
Miami Beach



2008  
The Standard,  
High Line



2011  
The Standard,  
East Village



2019  
The Standard,  
London



2019  
The Standard,  
Maldives

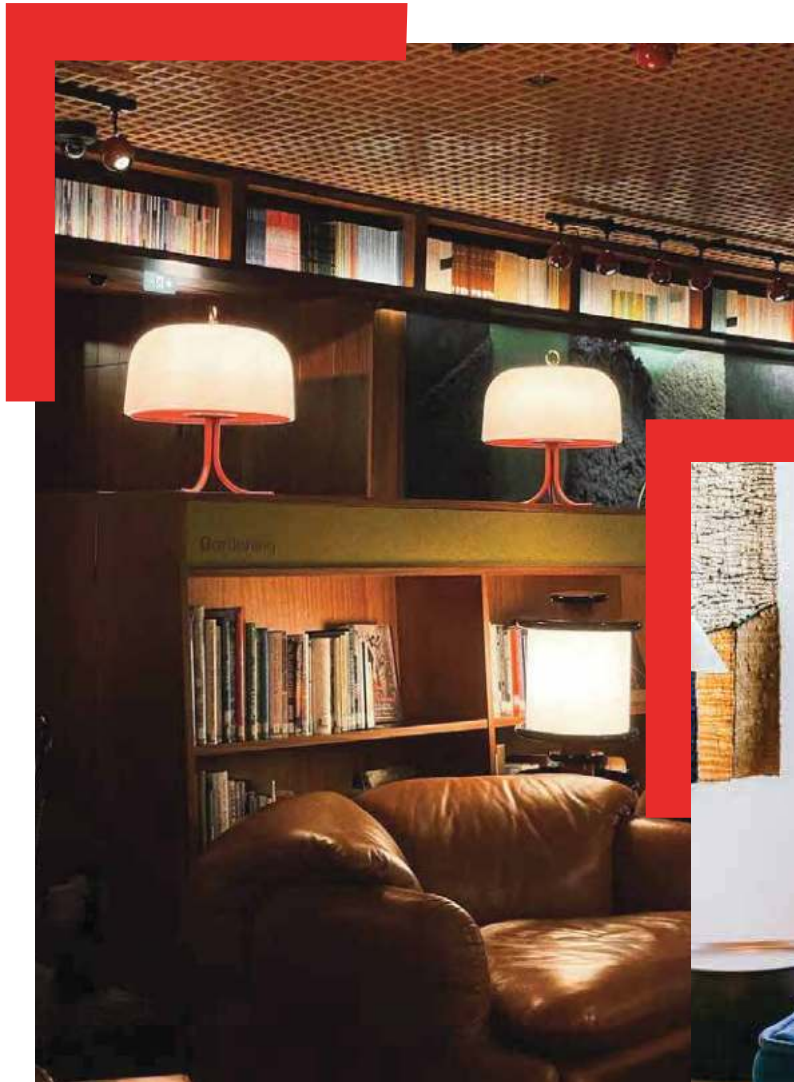


2021  
The Standard,  
Hua Hin



2022  
The Standard,  
Ibiza





Library at The Standard Hotel in London



Mah Jong Sofa at The Standard Hotel in Miami Beach



Natural materials at The Standard Hotel Hua Hin



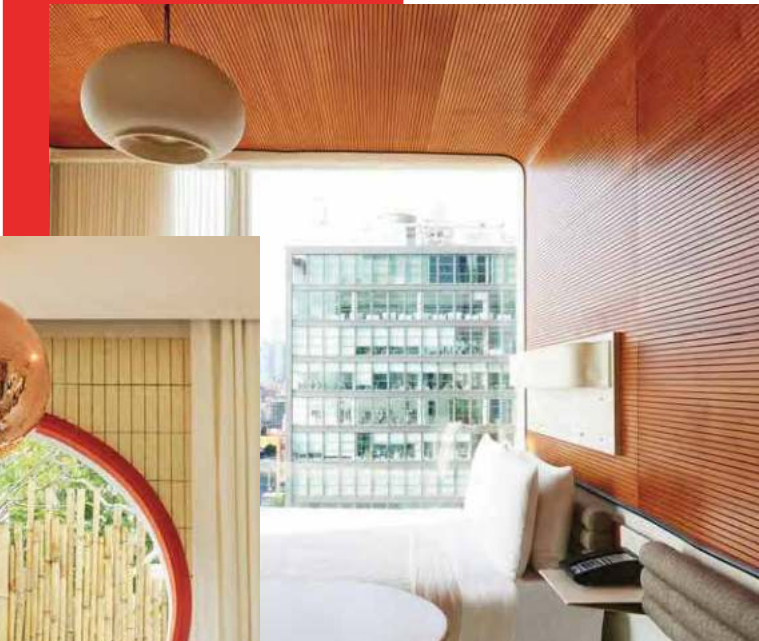
Bubble Chair at The Standard Hotel in Hollywood



TOGO Sofa at The Standard Hotel in Hollywood



Disco Ball and Round Windows at The Standard Hotel in Hua Hin



Wood Panels at The Standard Hotel in Highline NYC



# BE LOCAL



**TREE HUGGER SOAPS**  
Soap Maker



**ALMA AROMATHERAPY**  
Specialty Scents



**GROVE + ANCHOR**  
Furniture Maker



**THE TIPSY GARDENER**  
Crafts Maker



**YERBAMALA DESIGNS**  
Artisans



**HOLZ LONGBOARDS**  
Longboards Maker



**ALCHEMY PRODUCTIONS**  
Visual Stylist



**LULU'S**  
Nitrogen Ice Cream Shop



**LEMONI CAFE**  
Neighborhood Eatery



**NOT ANOTHER ORGANIC BRAND**  
Natural Craft Popsicles



**SALTY DONUT**  
Craft Donuts



**ALL DAY**  
Coffee Shop



**MIDTOWN MIAMI'S  
FRIENDLIEST AND COOLEST  
NEW NEIGHBOR**





**LEVEL 01**

# THE LOBBY LOUNGE

**CAFÈ WITH OUTDOOR TERRACE AND 'CAFECITO' WINDOW**

**PET GROOMING SPA**

**BICYCLE STORAGE**

**MAILROOM**



## Buzzy and Bold Lobby Lounge

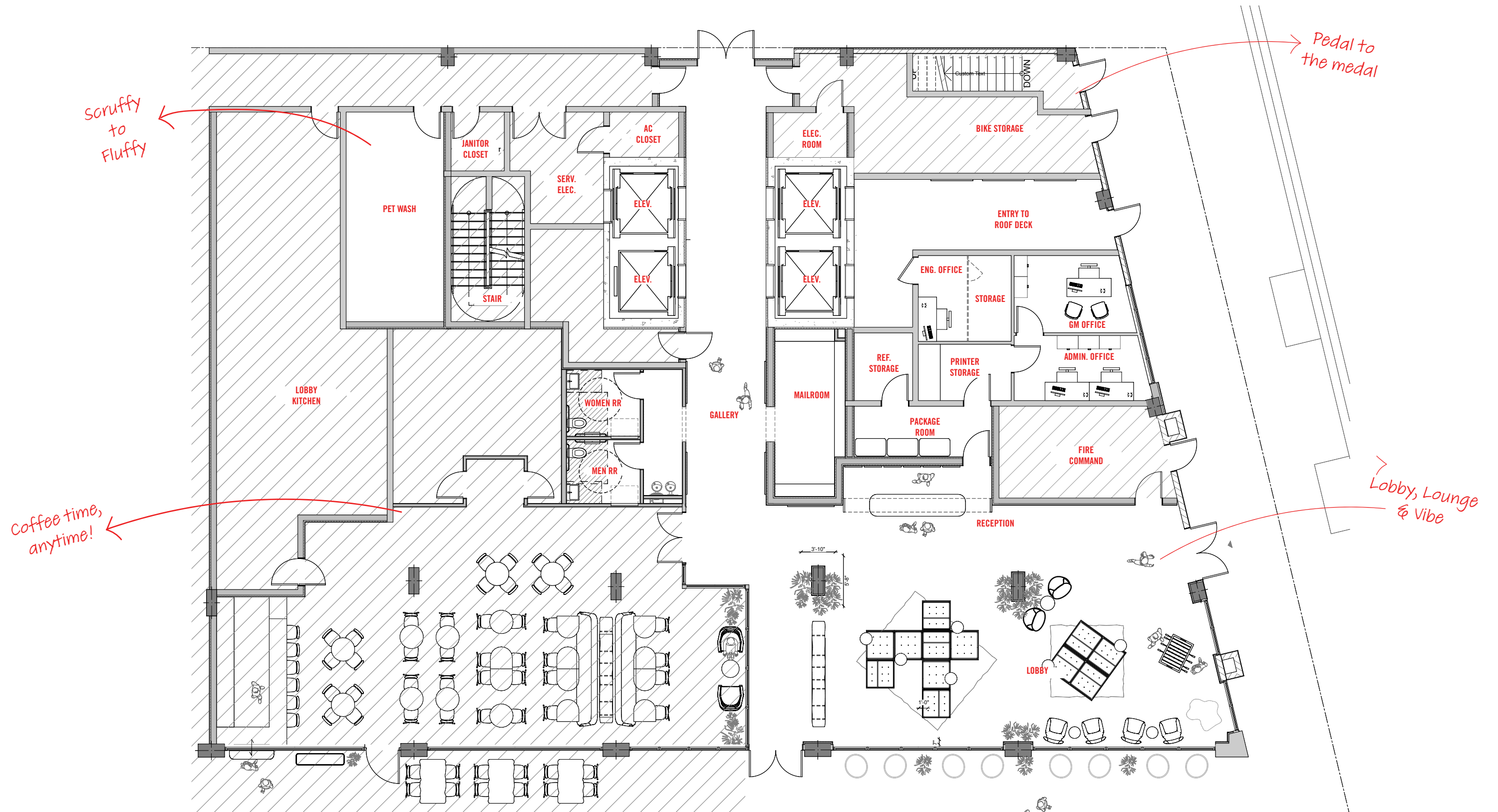




Lobby and Chill?



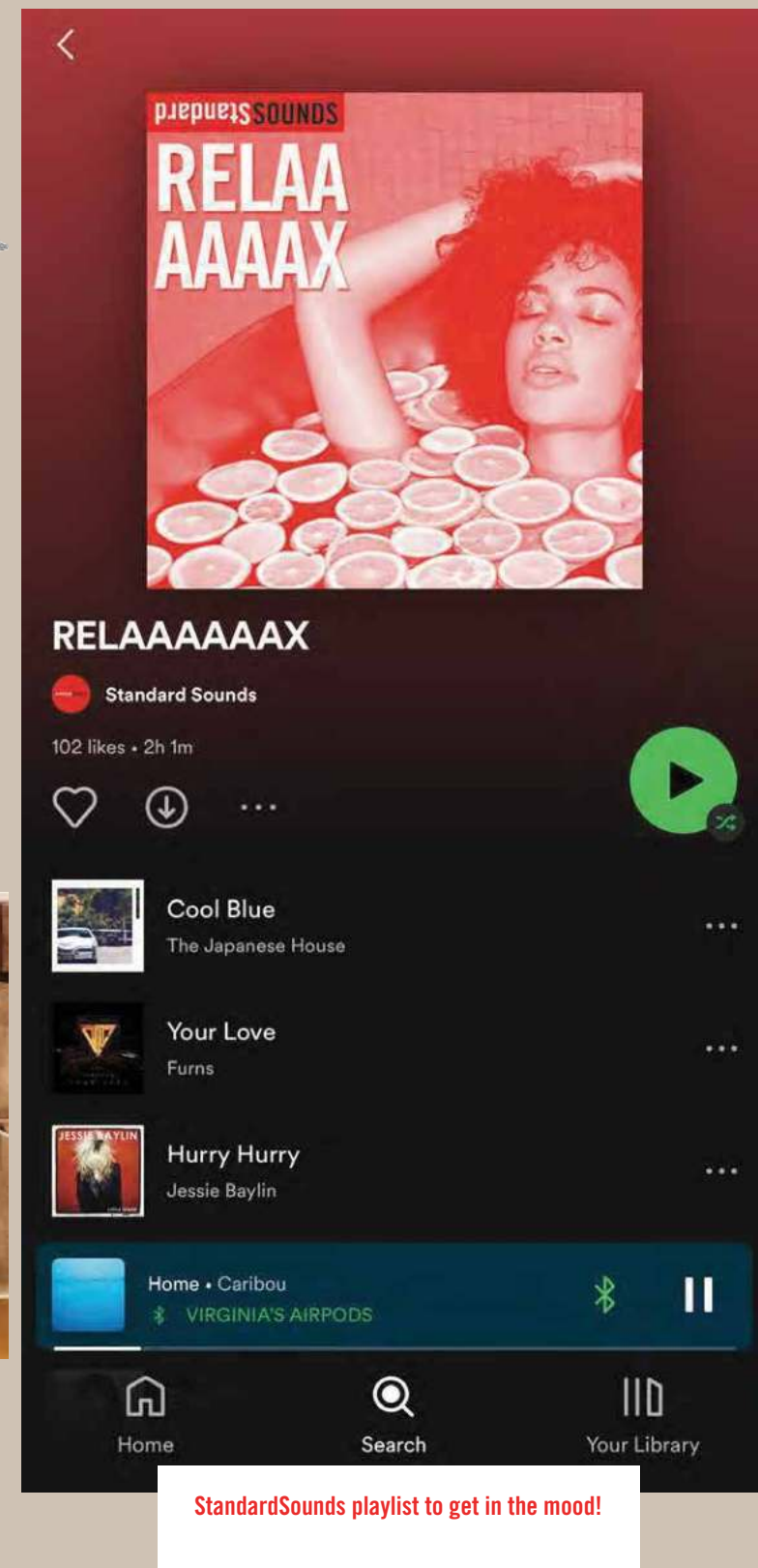




## GROUND FLOOR - THE LOBBY LOUNGE

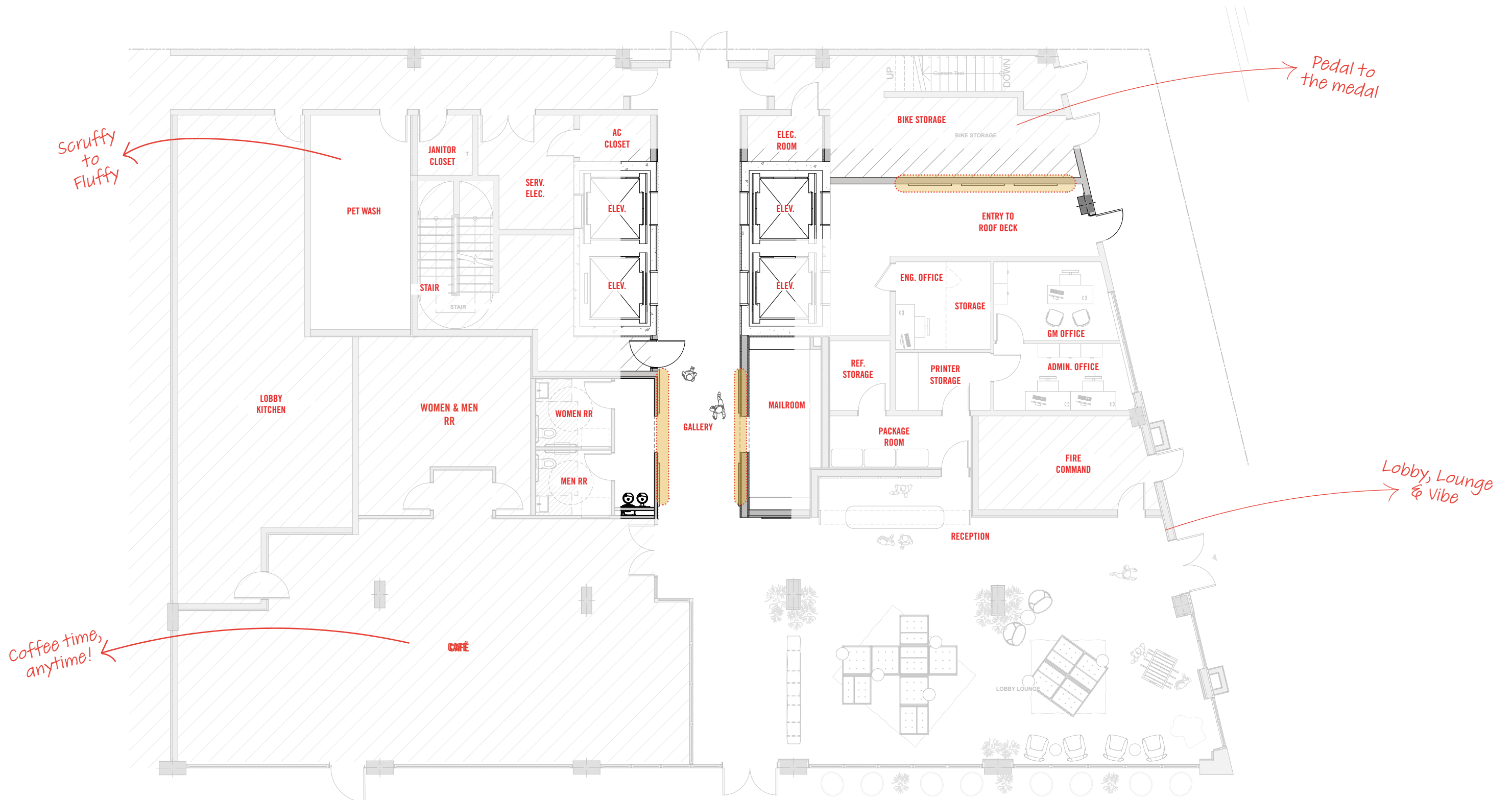
Stated dimensions are measured to the exterior boundaries of the exterior walls and the centerline of interior demising walls and in fact vary from the dimensions that would be determined by using the description and definition of the Unit; set forth in the Declaration (which generally only includes the interior airspace between the perimeter walls and excludes interior structural components). For your reference, the area of the Unit, determined in accordance with those defined unit boundaries, is set forth in the Declaration included as an Exhibit to the Prospectus. Note that measurements of rooms set forth on this floor plan are generally taken at the greatest points of each given room (as if the room were a perfect rectangle), without regard for any cutouts. Accordingly, the area of the actual room will typically be smaller than the product obtained by multiplying the stated length times width. All dimensions are approximate and may vary with actual construction, and all floor plans and development plans are subject to change.

PRESENTATION IS FOR DESIGN INTENT PURPOSES ONLY - NOT FOR CONSTRUCTION



# THE LOBBY LOUNGE



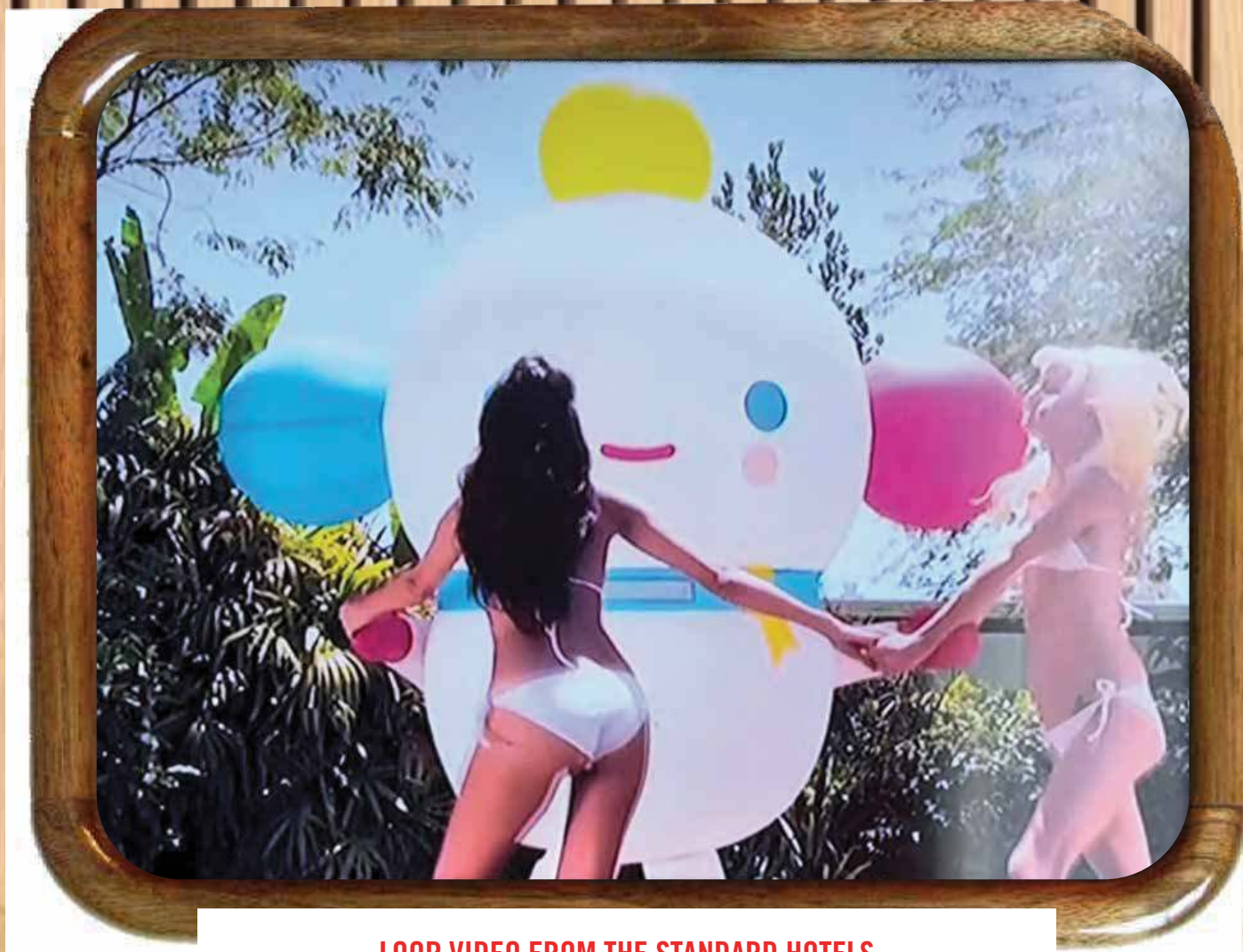


## GROUND FLOOR - LOBBY GALLERY

Stated dimensions are measured to the exterior boundaries of the exterior walls and the centerline of interior demising walls and in fact vary from the dimensions that would be determined by using the description and definition of the Unit; set forth in the Declaration (which generally only includes the interior airspace between the perimeter walls and excludes interior structural components). For your reference, the area of the Unit, determined in accordance with those defined unit boundaries, is set forth in the Declaration included as an Exhibit to the Prospectus. Note that measurements of rooms set forth on this floor plan are generally taken at the greatest points of each given room (as if the room were a perfect rectangle), without regard for any cutouts. Accordingly, the area of the actual room will typically be smaller than the product obtained by multiplying the stated length times width. All dimensions are approximate and may vary with actual construction, and all floor plans and development plans are subject to change.

PRESENTATION IS FOR DESIGN INTENT PURPOSES ONLY - NOT FOR CONSTRUCTION



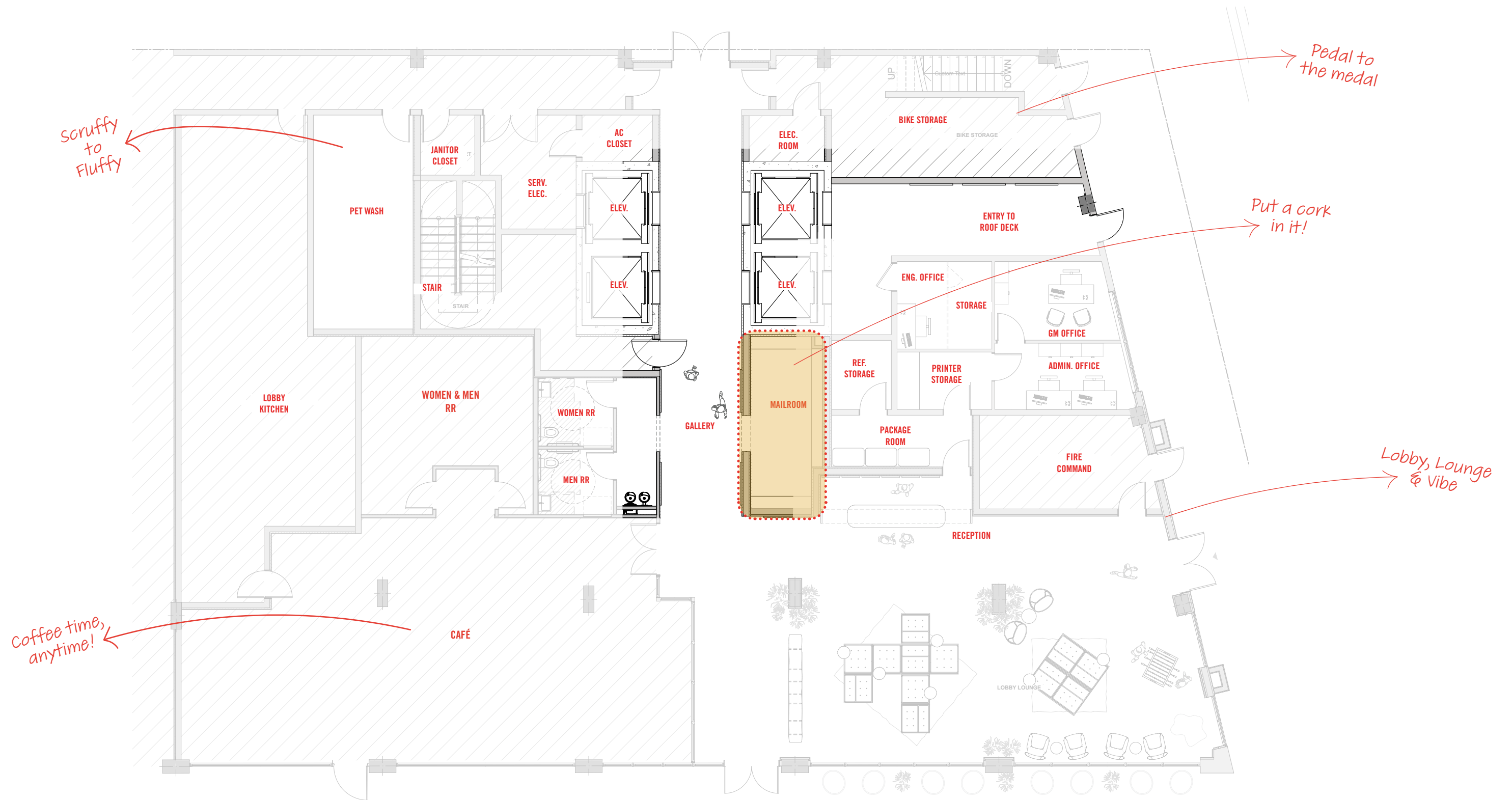


LOOP VIDEO FROM THE STANDARD HOTELS



UNDERWATER CAMERA STREAMING LIVE FROM AN URBAN CORAL REEF IN MIAMI, FL





## GROUND FLOOR - MAIL ROOM

Stated dimensions are measured to the exterior boundaries of the exterior walls and the centerline of interior demising walls and in fact vary from the dimensions that would be determined by using the description and definition of the Unit; set forth in the Declaration (which generally only includes the interior airspace between the perimeter walls and excludes interior structural components). For your reference, the area of the Unit, determined in accordance with those defined unit boundaries, is set forth in the Declaration included as an Exhibit to the Prospectus. Note that measurements of rooms set forth on this floor plan are generally taken at the greatest points of each given room (as if the room were a perfect rectangle), without regard for any cutouts. Accordingly, the area of the actual room will typically be smaller than the product obtained by multiplying the stated length times width. All dimensions are approximate and may vary with actual construction, and all floor plans and development plans are subject to change.

PRESENTATION IS FOR DESIGN INTENT PURPOSES ONLY - NOT FOR CONSTRUCTION



Hang it. Mount it. Stand it.



PHOTO BOOTH



RED MAILROOM



CORK WALL



**LEVEL 02**

# THE SOCIAL FLOOR

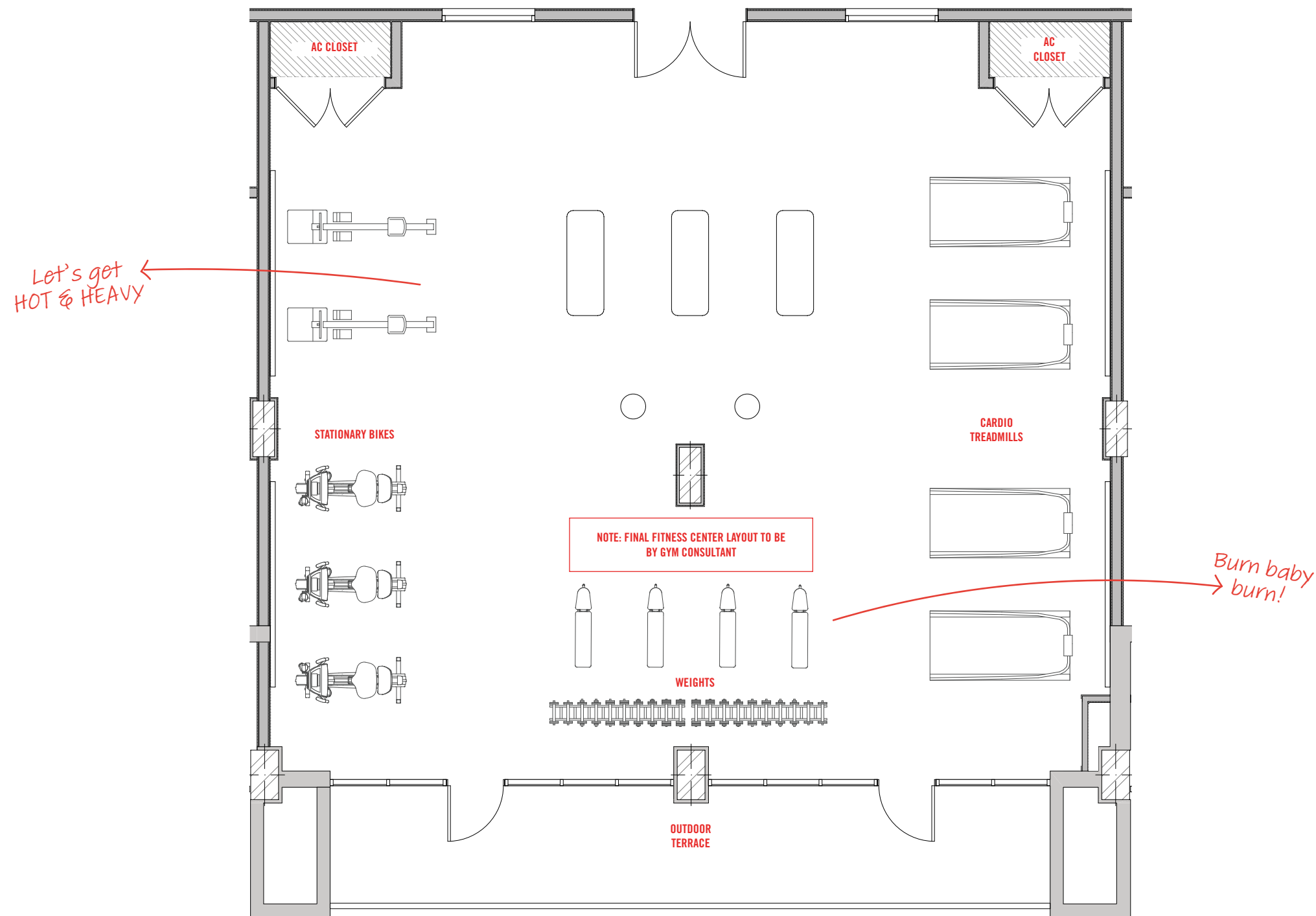
**HOT & HEAVY FITNESS CENTER  
YOGA AND MEDITATION STUDIO  
THE STRETCH ZONE  
INFRARED SAUNAS**



## Hot & Heavy Fitness Center





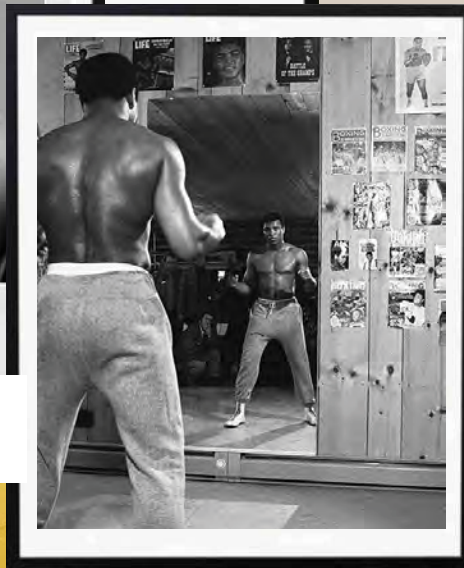
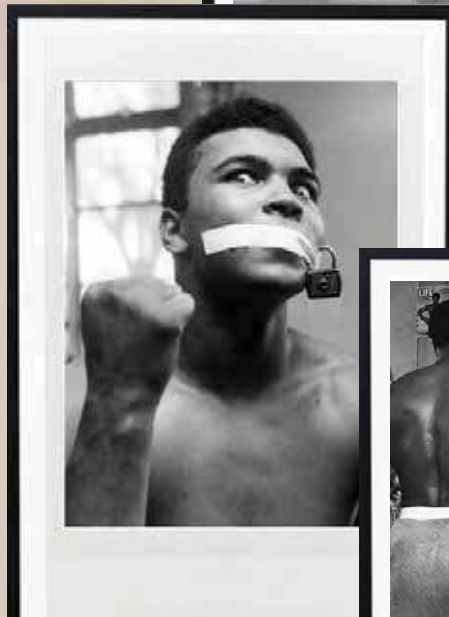
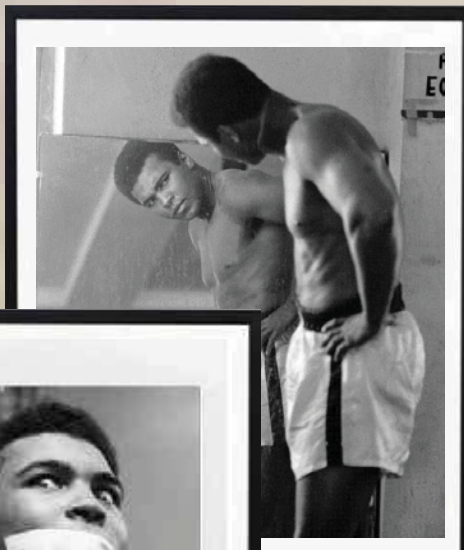
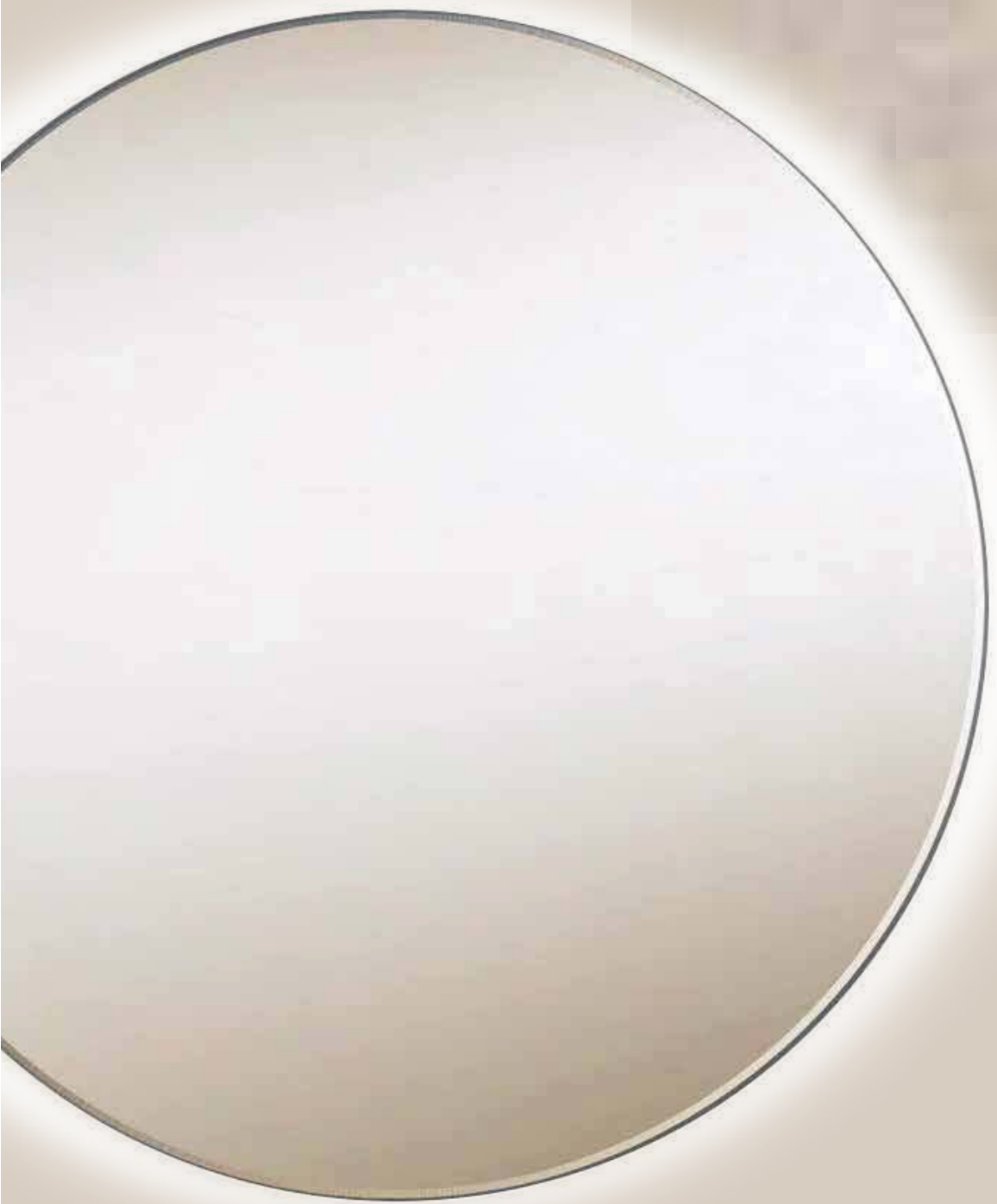


## LEVEL 02 - HOT & HEAVY FITNESS CENTER

Stated dimensions are measured to the exterior boundaries of the exterior walls and the centerline of interior demising walls and in fact vary from the dimensions that would be determined by using the description and definition of the Unit; set forth in the Declaration (which generally only includes the interior airspace between the perimeter walls and excludes interior structural components). For your reference, the area of the Unit, determined in accordance with those defined unit boundaries, is set forth in the Declaration included as an Exhibit to the Prospectus. Note that measurements of rooms set forth on this floor plan are generally taken at the greatest points of each given room (as if the room were a perfect rectangle), without regard for any cutouts. Accordingly, the area of the actual room will typically be smaller than the product obtained by multiplying the stated length times width. All dimensions are approximate and may vary with actual construction, and all floor plans and development plans are subject to change.

PRESENTATION IS FOR DESIGN INTENT PURPOSES ONLY - NOT FOR CONSTRUCTION

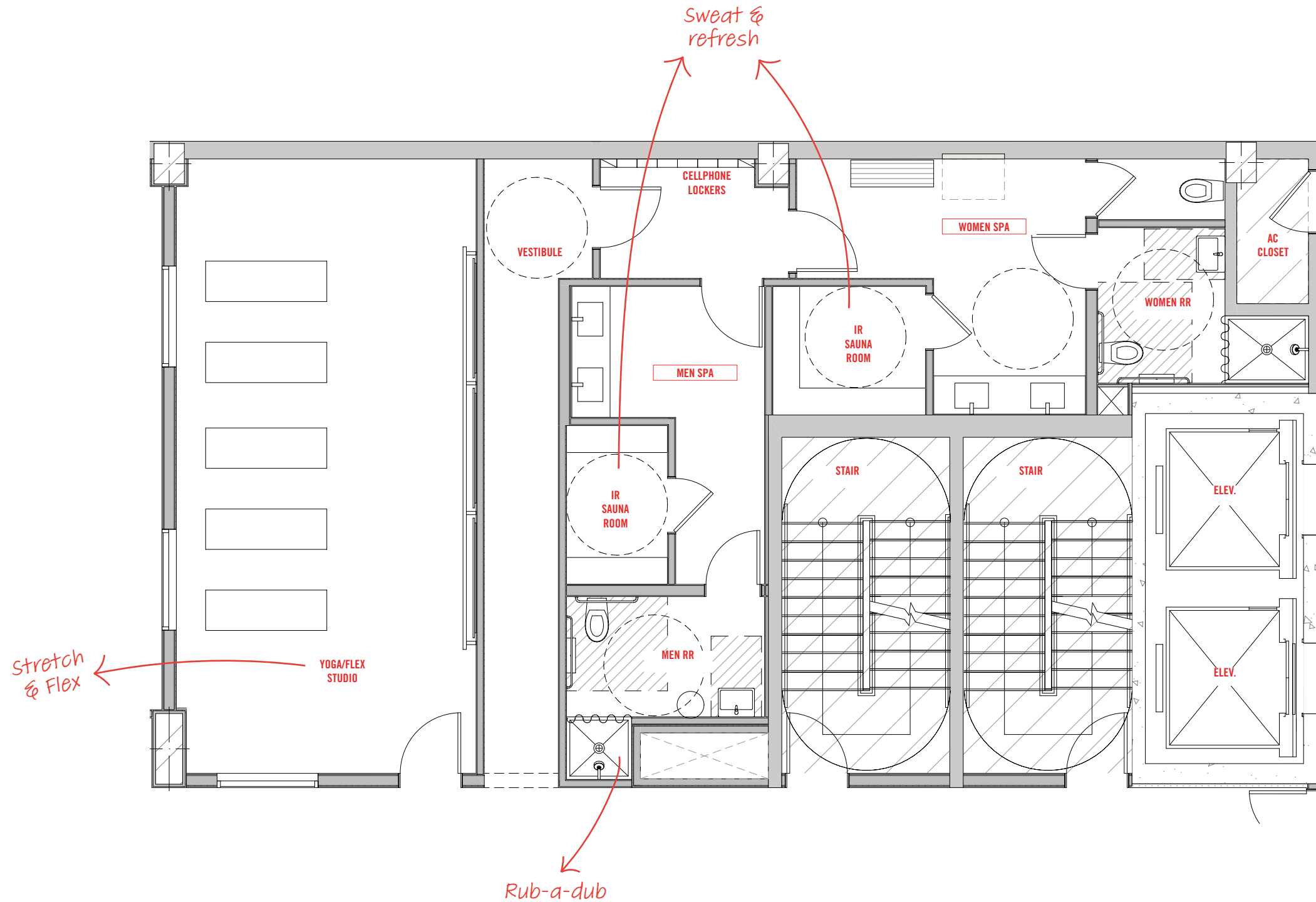




Vintage Artwork







## LEVEL 02 - THE STRETCH ZONE

Stated dimensions are measured to the exterior boundaries of the exterior walls and the centerline of interior demising walls and in fact vary from the dimensions that would be determined by using the description and definition of the Unit; set forth in the Declaration (which generally only includes the interior airspace between the perimeter walls and excludes interior structural components). For your reference, the area of the Unit, determined in accordance with those defined unit boundaries, is set forth in the Declaration included as an Exhibit to the Prospectus. Note that measurements of rooms set forth on this floor plan are generally taken at the greatest points of each given room (as if the room were a perfect rectangle), without regard for any cutouts. Accordingly, the area of the actual room will typically be smaller than the product obtained by multiplying the stated length times width. All dimensions are approximate and may vary with actual construction, and all floor plans and development plans are subject to change.

PRESENTATION IS FOR DESIGN INTENT PURPOSES ONLY - NOT FOR CONSTRUCTION





Infrared Sauna



Aerial Yoga



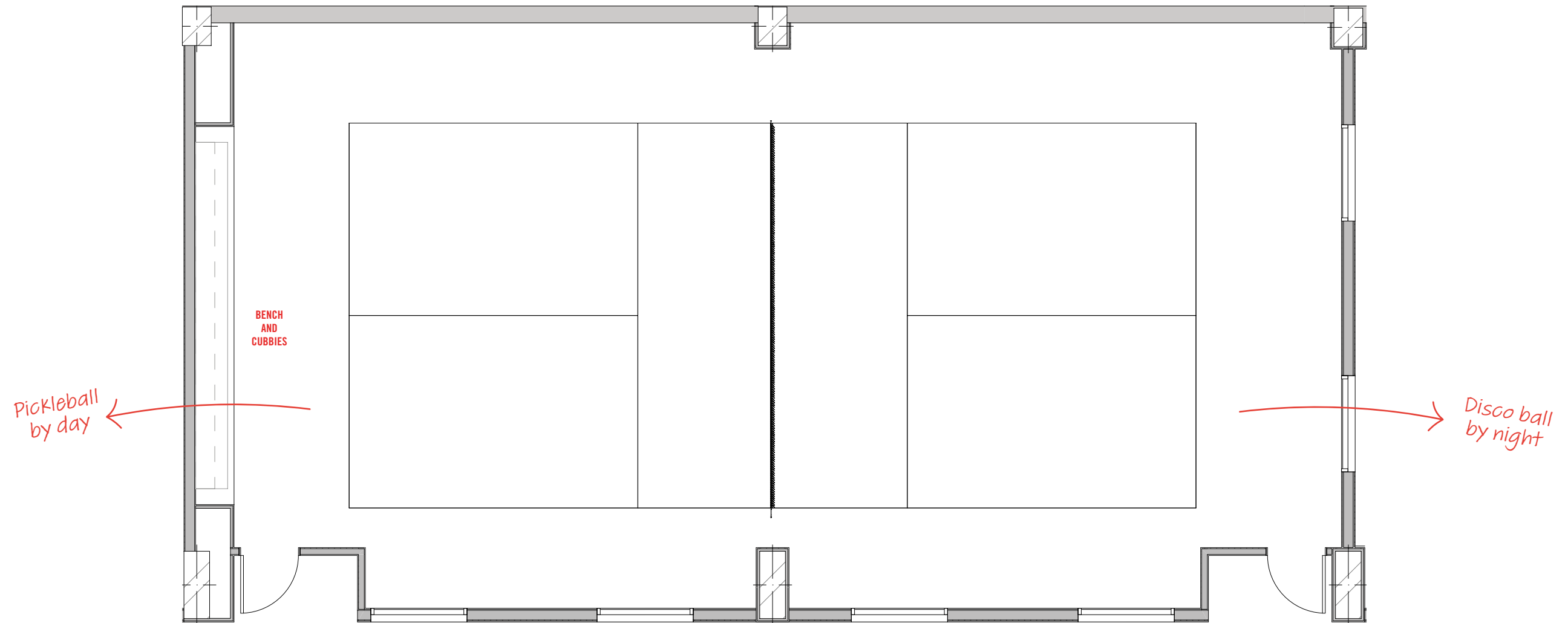
THE STRETCH ZONE



## Pickleball at The Disco







## LEVEL 02 - PICKLEBALL AT THE DISCO

Stated dimensions are measured to the exterior boundaries of the exterior walls and the centerline of interior demising walls and in fact vary from the dimensions that would be determined by using the description and definition of the Unit; set forth in the Declaration (which generally only includes the interior airspace between the perimeter walls and excludes interior structural components). For your reference, the area of the Unit, determined in accordance with those defined unit boundaries, is set forth in the Declaration included as an Exhibit to the Prospectus. Note that measurements of rooms set forth on this floor plan are generally taken at the greatest points of each given room (as if the room were a perfect rectangle), without regard for any cutouts. Accordingly, the area of the actual room will typically be smaller than the product obtained by multiplying the stated length times width. All dimensions are approximate and may vary with actual construction, and all floor plans and development plans are subject to change.

PRESENTATION IS FOR DESIGN INTENT PURPOSES ONLY - NOT FOR CONSTRUCTION





Round Windows at The Standard Hotel  
in Hua Hin



Disco Ball at The Standard Hotel  
in Hua Hin



# PICKLEBALL AT THE DISCO



**LEVEL 03**

# THE SOCIAL FLOOR

**REC ROOM**

**THE STANDARD SOCIAL CLUB**

**PRIVATE SCREENING ROOM**

**KARAOKE BAR**



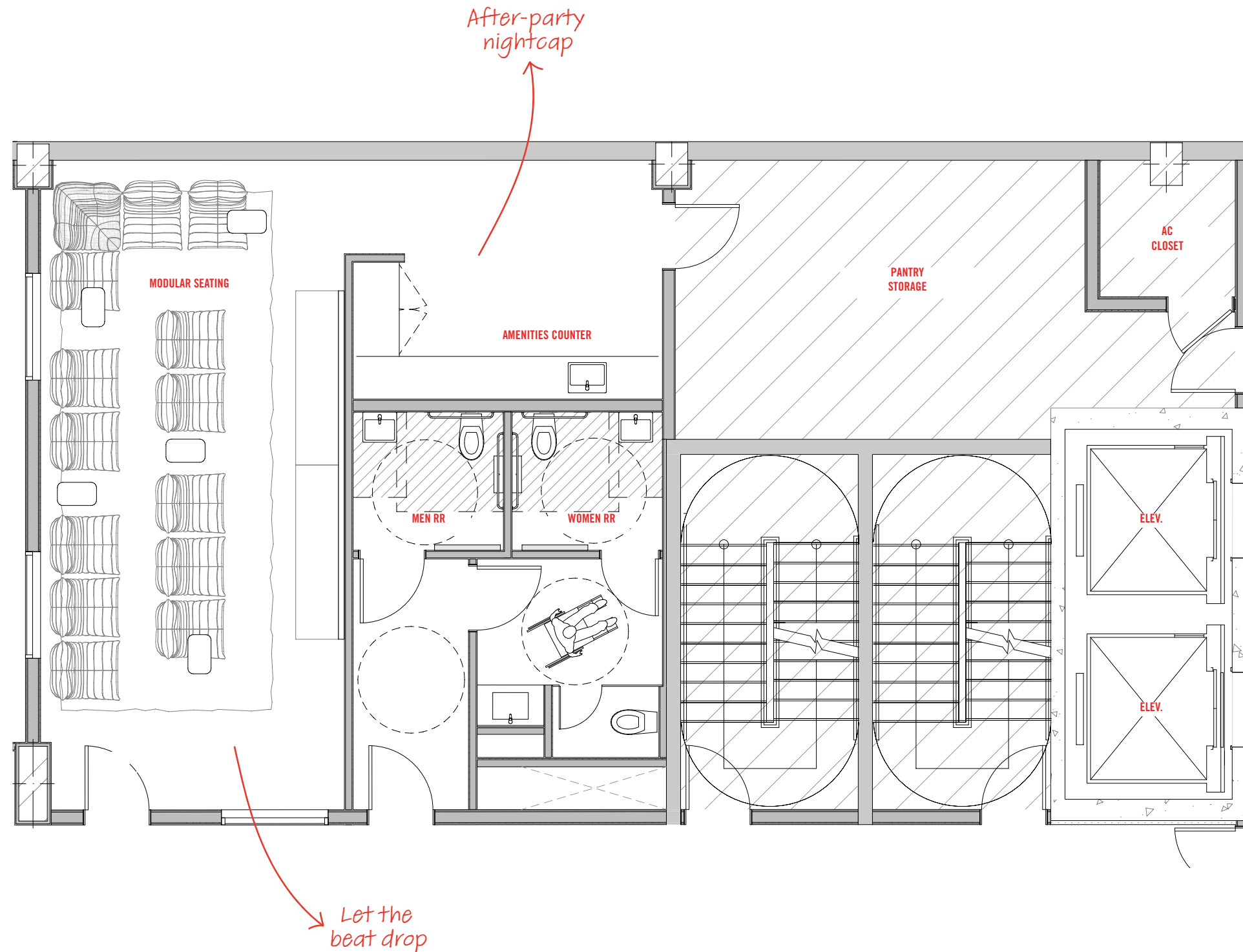
KARAOKE

NIGHTS



RICH MEDINA  
LOCAL MUSIC CURATOR





## LEVEL 03 - REC ROOM

Stated dimensions are measured to the exterior boundaries of the exterior walls and the centerline of interior demising walls and in fact vary from the dimensions that would be determined by using the description and definition of the Unit; set forth in the Declaration (which generally only includes the interior airspace between the perimeter walls and excludes interior structural components). For your reference, the area of the Unit, determined in accordance with those defined unit boundaries, is set forth in the Declaration included as an Exhibit to the Prospectus. Note that measurements of rooms set forth on this floor plan are generally taken at the greatest points of each given room (as if the room were a perfect rectangle), without regard for any cutouts. Accordingly, the area of the actual room will typically be smaller than the product obtained by multiplying the stated length times width. All dimensions are approximate and may vary with actual construction, and all floor plans and development plans are subject to change.

PRESENTATION IS FOR DESIGN INTENT PURPOSES ONLY - NOT FOR CONSTRUCTION





Round Windows at The Standard Hotel  
in Hua Hin



TOGO Sofa from The Standard Hotel in West  
Hollywood

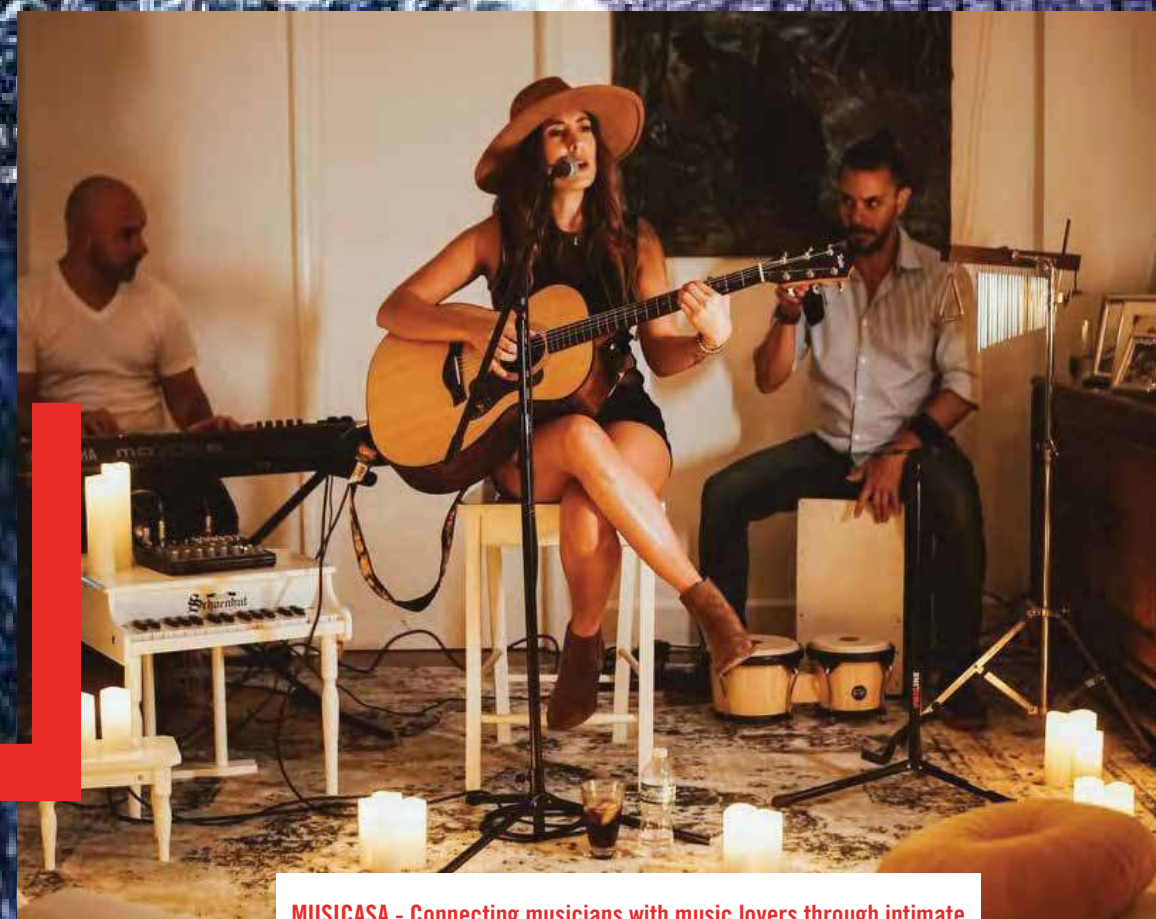
REC ROOM





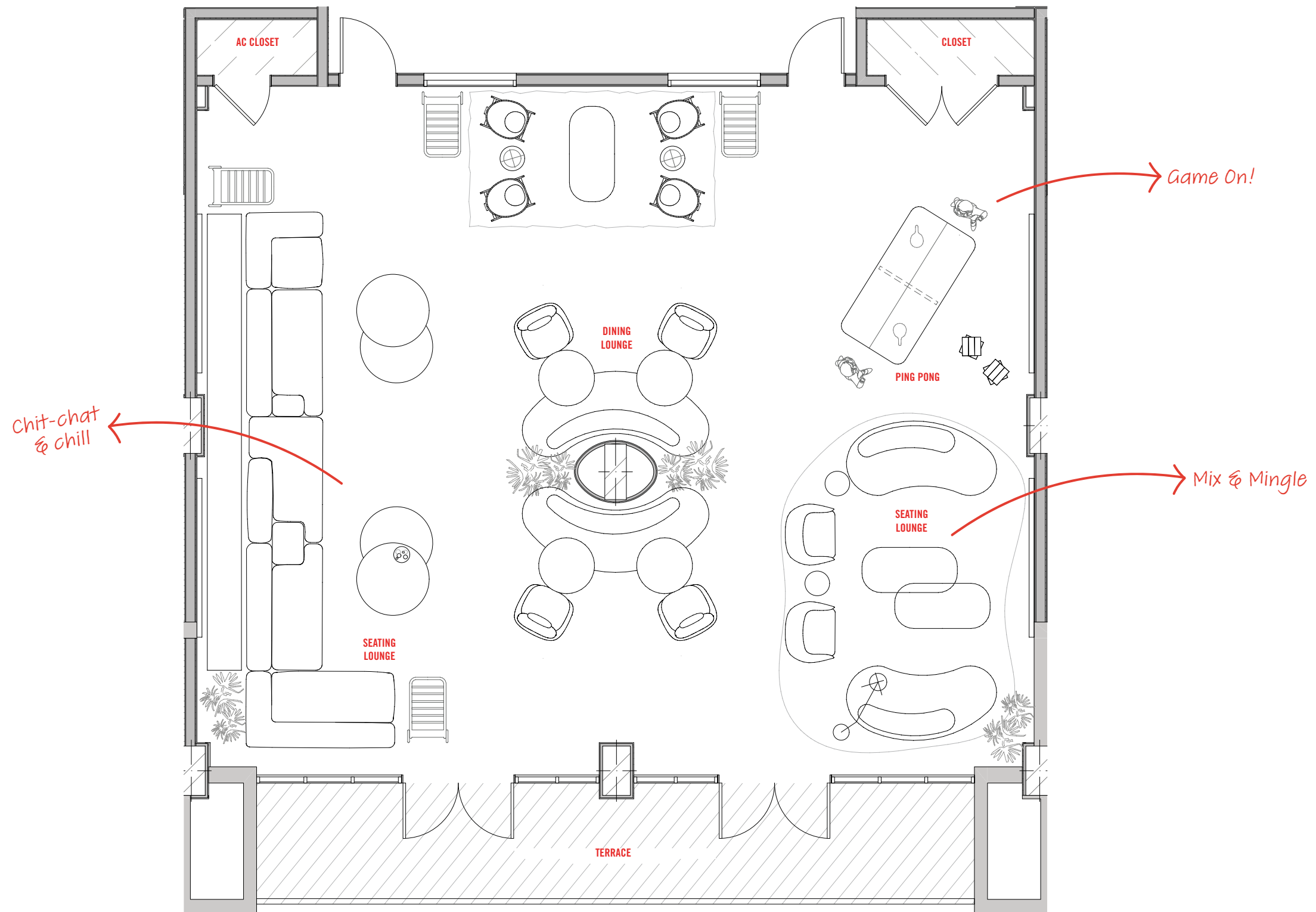
**The Standard Social Club**





MUSICASA - Connecting musicians with music lovers through intimate home concerts





## LEVEL 03 - THE STANDARD SOCIAL CLUB

Stated dimensions are measured to the exterior boundaries of the exterior walls and the centerline of interior demising walls and in fact vary from the dimensions that would be determined by using the description and definition of the Unit; set forth in the Declaration (which generally only includes the interior airspace between the perimeter walls and excludes interior structural components). For your reference, the area of the Unit, determined in accordance with those defined unit boundaries, is set forth in the Declaration included as an Exhibit to the Prospectus. Note that measurements of rooms set forth on this floor plan are generally taken at the greatest points of each given room (as if the room were a perfect rectangle), without regard for any cutouts. Accordingly, the area of the actual room will typically be smaller than the product obtained by multiplying the stated length times width. All dimensions are approximate and may vary with actual construction, and all floor plans and development plans are subject to change.

PRESENTATION IS FOR DESIGN INTENT PURPOSES ONLY - NOT FOR CONSTRUCTION



**LEVEL 04**

# THE WORK FLOOR

**LIBRARY**

**COWORKING SPACES**

**FOUR ZOOM ROOMS**

**PRIVATE BOARD ROOM**

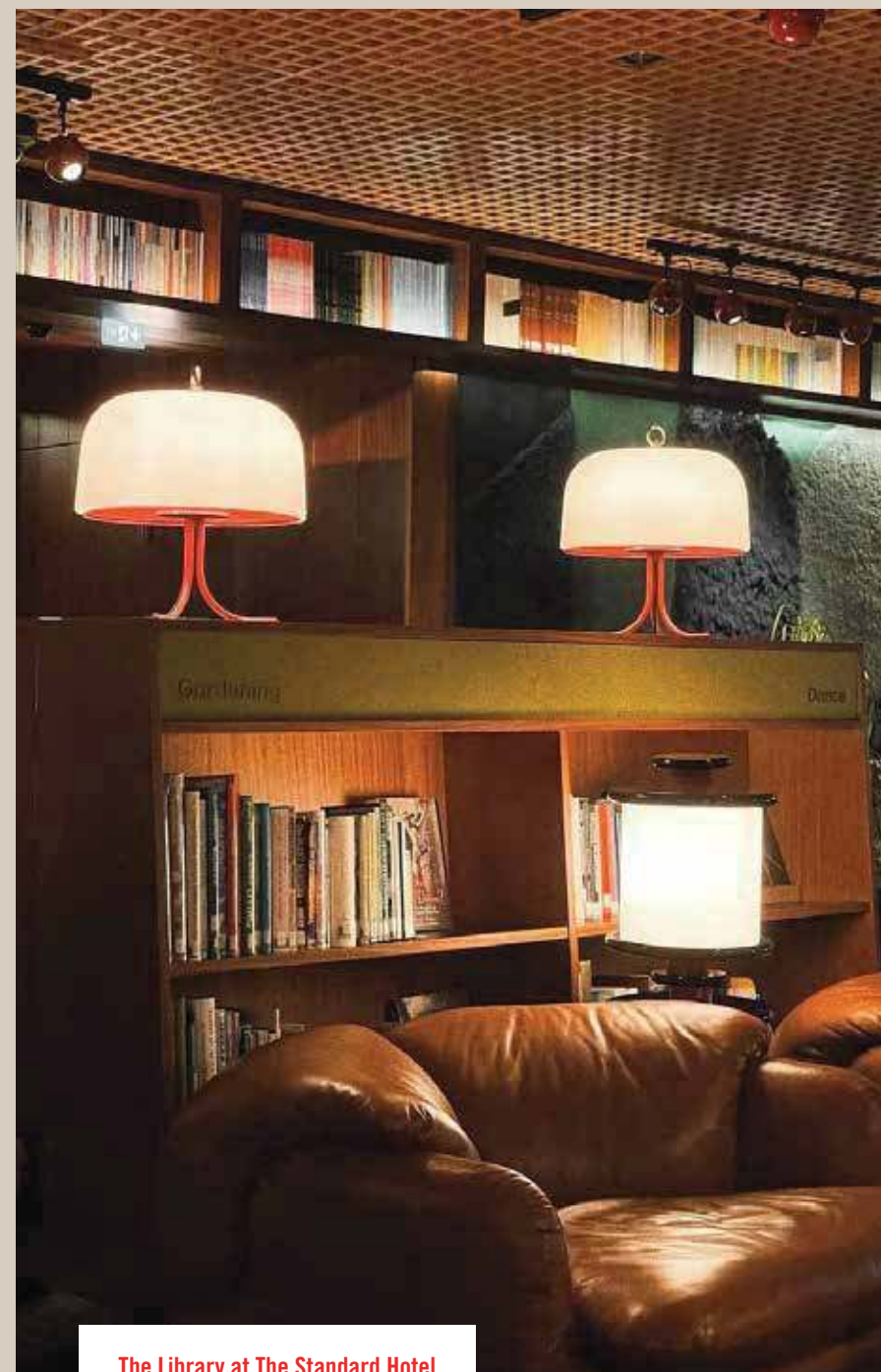
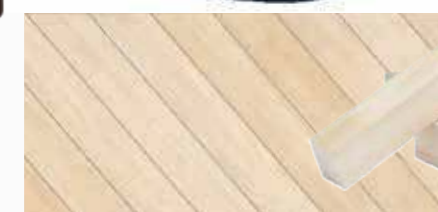




**Get Down To Business**



Rug in the Walls at The Standard Hotel in London

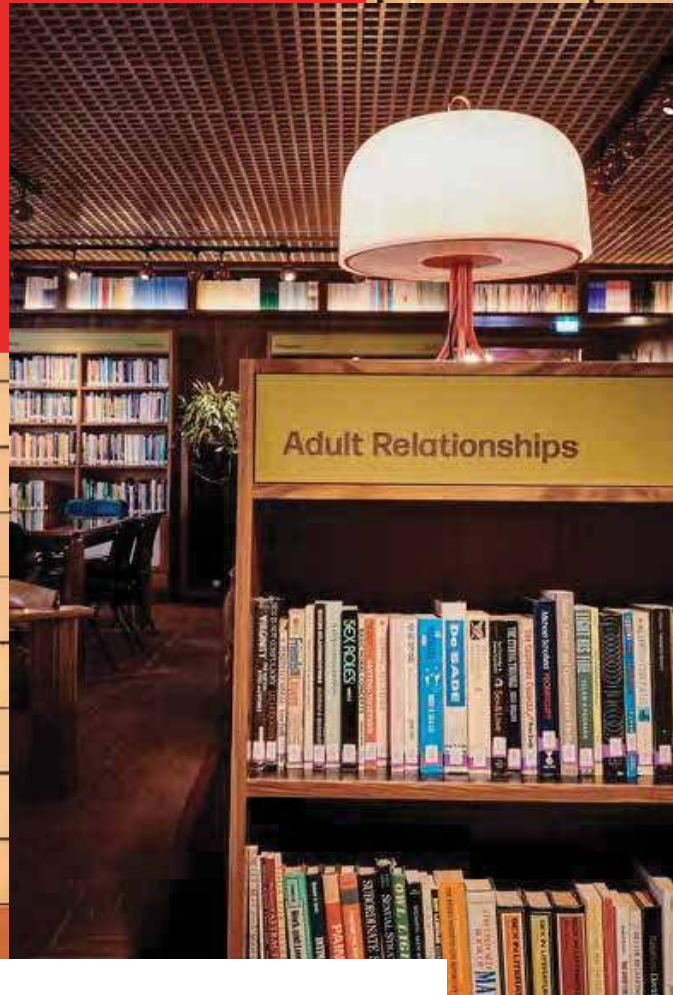


The Library at The Standard Hotel in London



SHHH!

NOT!

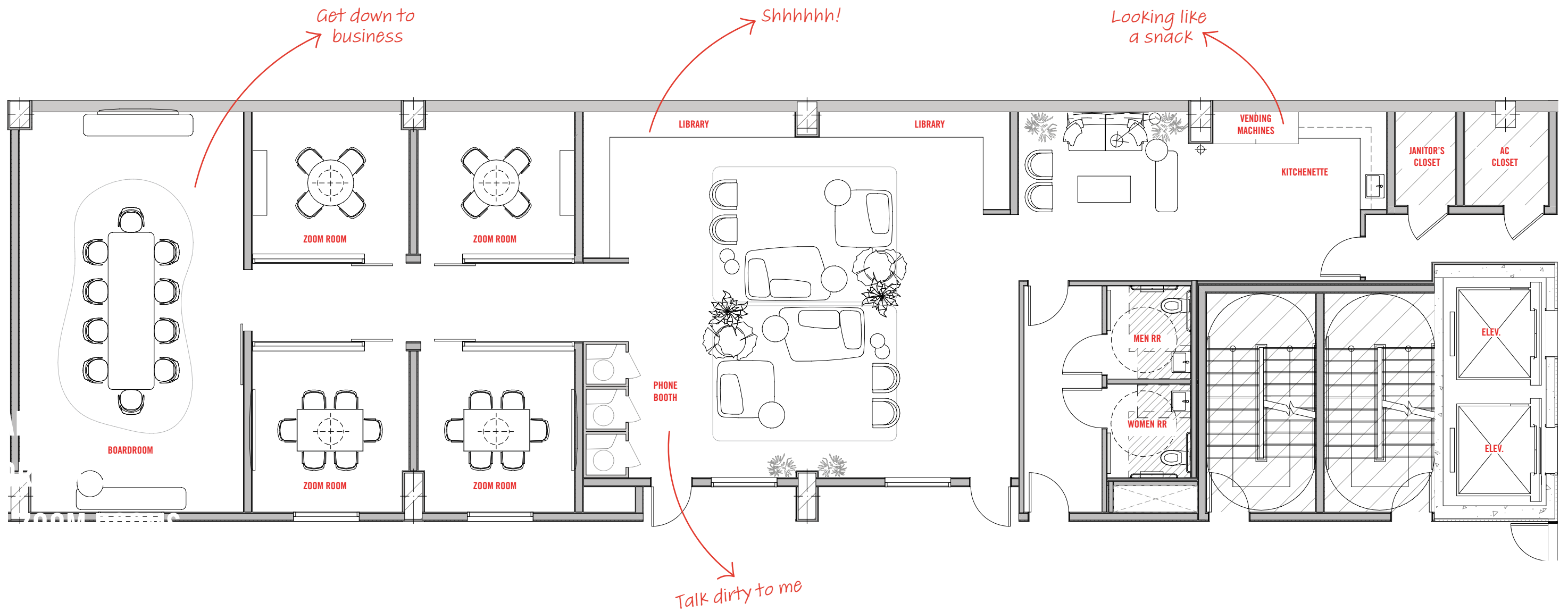


COOL LIBRARY



VINTAGE PHONE BOOTH





## LEVEL 04 - COWORKING

Stated dimensions are measured to the exterior boundaries of the exterior walls and the centerline of interior demising walls and in fact vary from the dimensions that would be determined by using the description and definition of the Unit; set forth in the Declaration (which generally only includes the interior airspace between the perimeter walls and excludes interior structural components). For your reference, the area of the Unit, determined in accordance with those defined unit boundaries, is set forth in the Declaration included as an Exhibit to the Prospectus. Note that measurements of rooms set forth on this floor plan are generally taken at the greatest points of each given room (as if the room were a perfect rectangle), without regard for any cutouts. Accordingly, the area of the actual room will typically be smaller than the product obtained by multiplying the stated length times width. All dimensions are approximate and may vary with actual construction, and all floor plans and development plans are subject to change.



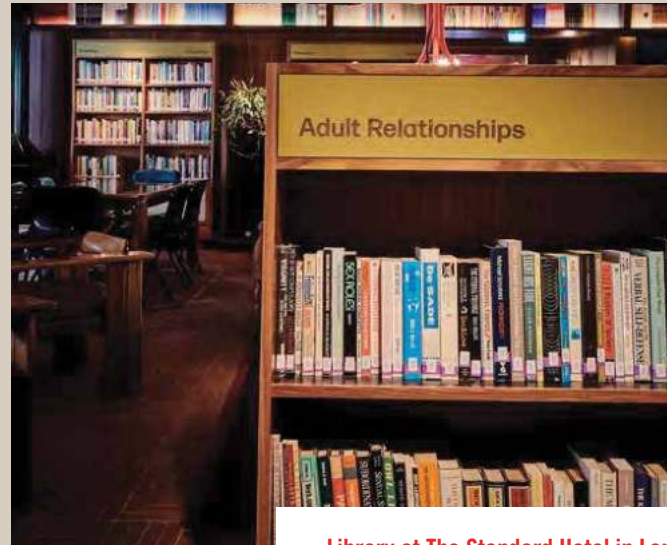


**Zoom Zoom Rooms**





Phone Booths



Library at The Standard Hotel in London

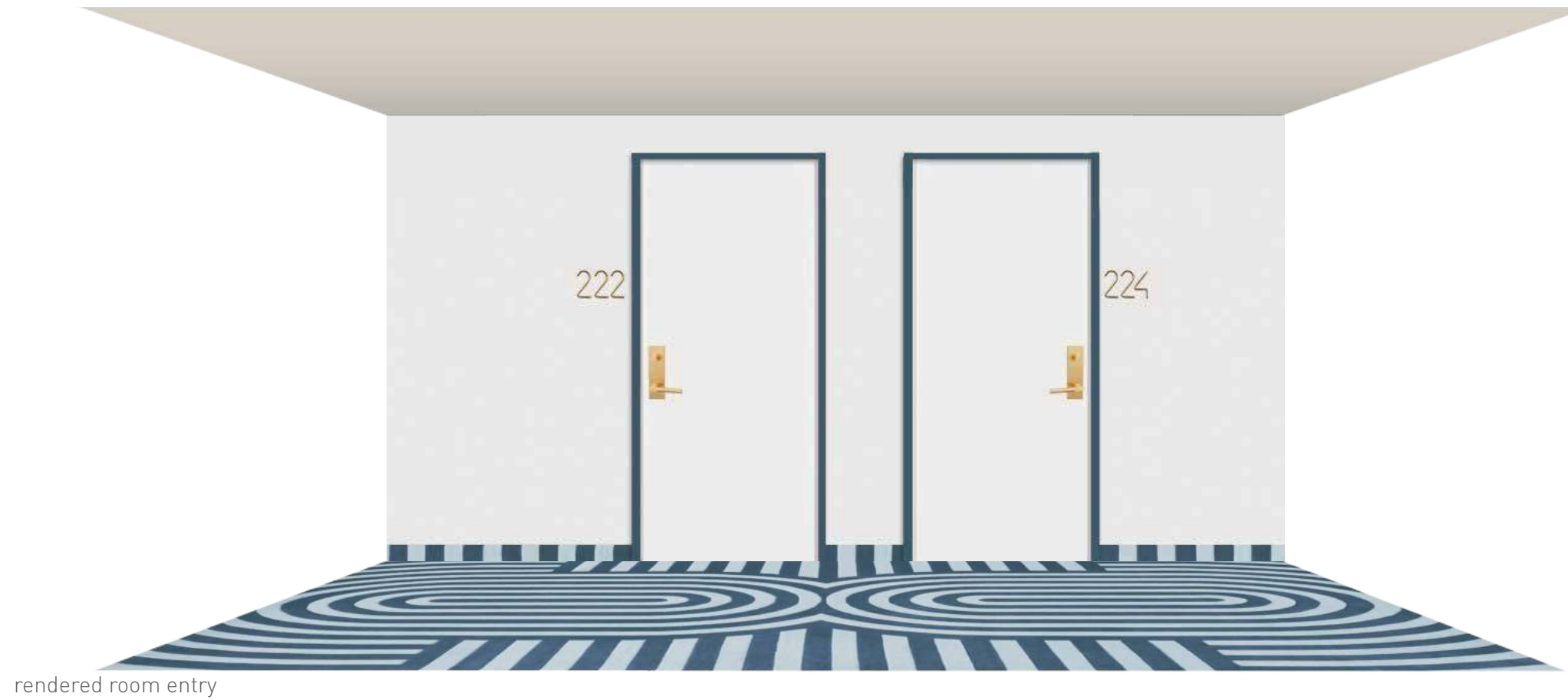




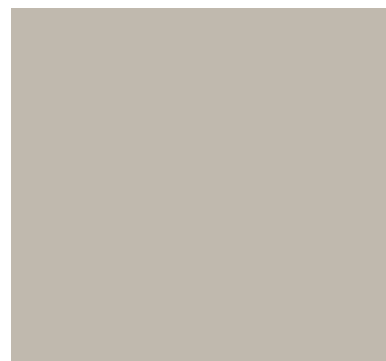
**LEVEL 02-11**

# THE CORRIDORS





rendered room entry



## TYPICAL CORRIDOR



**LEVEL 12**

# THE ROOFTOP

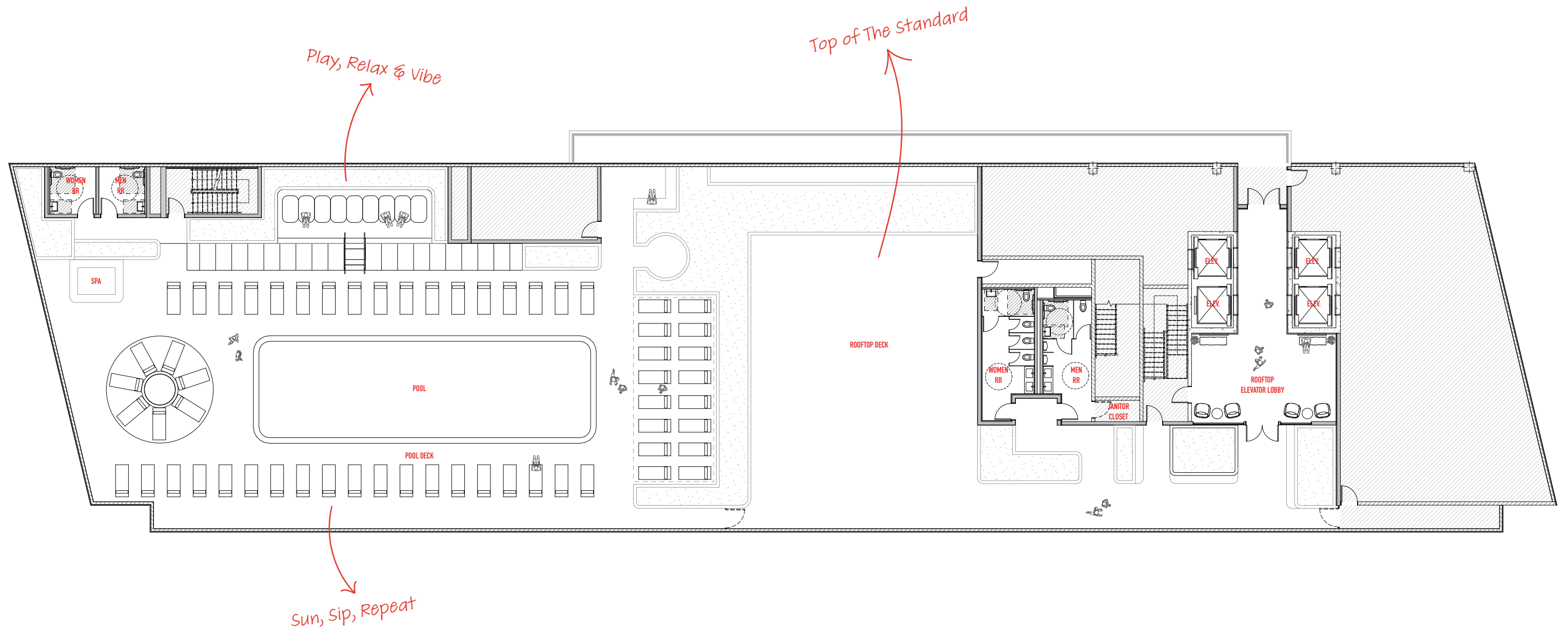
**SIGNATURE RESTAURANT & BAR**

**60-FOOT LAP POOL**

**POOLSIDE CABANAS**

**WHIRLPOOL SPA**





# ROOF TOP



## Hightop Rooftop







Rooftop Bar



Feature Round Daybed Concept



Elongated Pool



Pool Deck at The Standard Hotel in Hua Hin



Accent Upholstered Sun Loungers



ROOFTOP DESIGN IN COLLABORATION WITH NATURALFICIAL





**Top of The Standard**





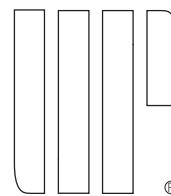
ROOFTOP DESIGN IN COLLABORATION WITH NATURALFICIAL

ROOF TOP



# WASN'T THAT FUN?

3100 NE 1st Avenue, Miami, FL 33137



© 2022 URBAN ROBOT ASSOCIATES  
THE STANDARD RESIDENCES :: MIDTOWN MIAMI

**ROSSO** Development



**Douglas Elliman**  
Development Marketing

This is not intended to be an offer to sell, or solicitation to buy, condominium units to residents of any jurisdiction where prohibited by law, and your eligibility for purchase will depend upon your state of residency. This offering is made only by the prospectus for the condominium and no statement should be relied upon if not made in the prospectus. No real estate broker or salesperson is authorized to make any representations or other statements regarding this project, and no agreements with, deposits paid to or other arrangements made with any real estate broker are or shall be binding on the Developer. The sketches, renderings, graphic materials, plans, specifications, terms, conditions and statements contained in this brochure are proposed only, and the Developer reserves the right to modify, revise or withdraw any or all of same in its sole discretion and without prior notice. All improvements, designs and construction are subject to first obtaining the appropriate federal, state and local permits and approvals for same. These drawings and depictions are conceptual only and are for the convenience of reference and including artists renderings. They should not be relied upon as representations, express or implied, of the final detail of the residences or the Condominium. The developer expressly reserves the right to make modifications, revisions, and changes it deems desirable in its sole and absolute discretion. All depictions of appliances, counters, soffits, floor coverings and other matters of detail, including, without limitation, items of furniture, finish and decoration, are conceptual only and are not necessarily included in each Unit. Consult your Agreement and the Prospectus for the items included with the Unit . The photographs contained in this brochure may be stock photography or have been taken off-site and are used to depict the spirit of the lifestyles to be achieved rather than any that may exist or that may be proposed, and are merely intended as illustrations of the activities and concepts depicted therein. Dimensions and square footage are approximate and may vary with actual construction. The project graphics, renderings and text provided herein are copyrighted works owned by the developer. All rights reserved. Unauthorized reproduction, display or other dissemination of such materials is strictly prohibited and constitutes copyright infringement. All prices are subject to change at any time and without notice, and do not include optional features or premiums for upgraded units. From time to time, price changes may have occurred that are not yet reflected on this brochure. Please check with the sales center for the most current pricing.

PRESENTATION IS FOR DESIGN INTENT PURPOSES ONLY - NOT FOR CONSTRUCTION



**The Standard**

**RESIDENCES**

---

**MIDTOWN MIAMI**