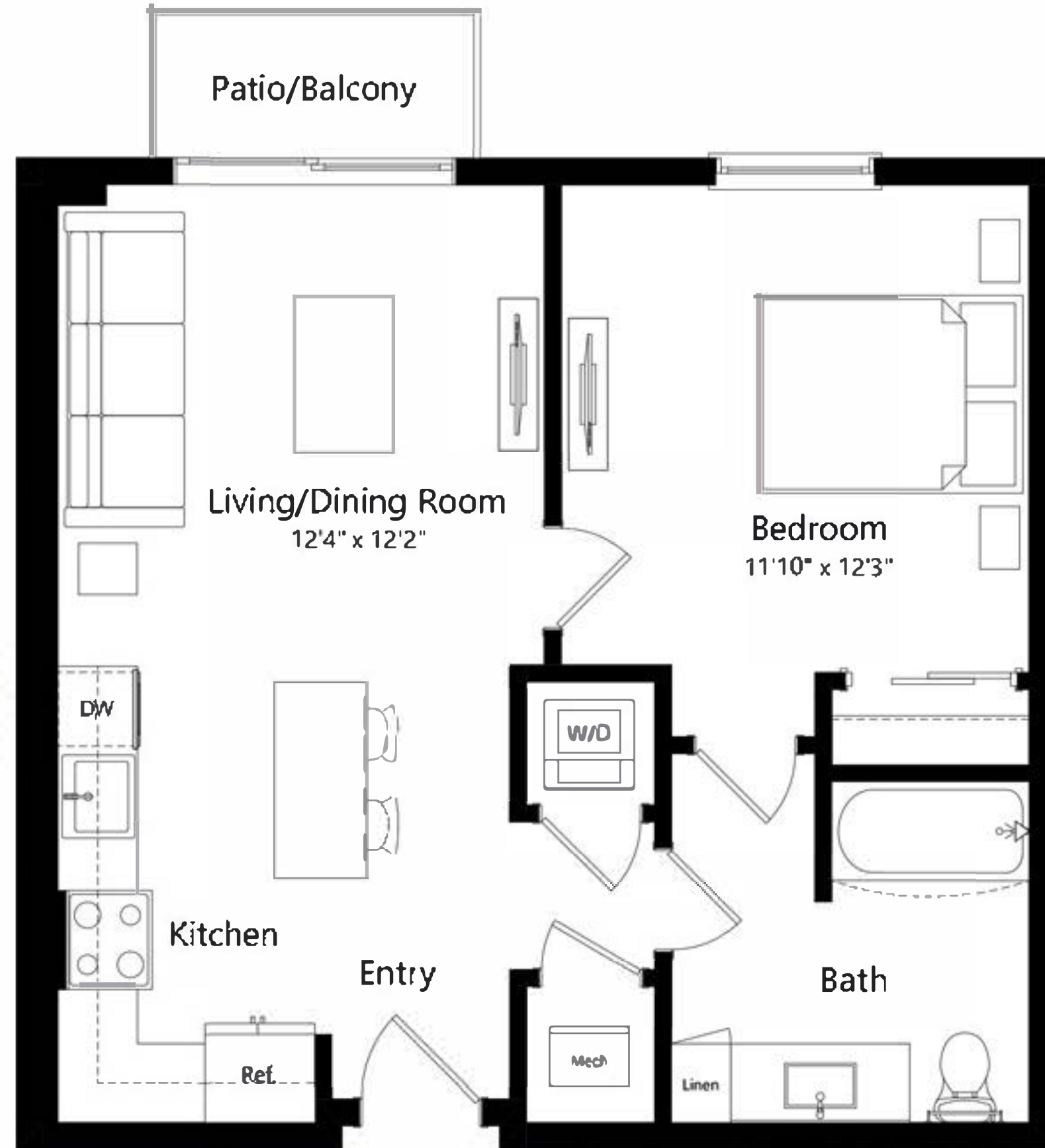


A1

1 BEDROOM 1 BATH

14

RIVER DISTRICT
MIAMI



635 | 194

SQ FT | M

The dimensions stated for this unit floor plan are approximate because there are various recognized methods for calculating the square footage of a unit. The square footage stated here is calculated from the exterior boundaries of the exterior walls to the centerline of interior demising walls without deductions for egress, curves, or architectural features. This method typically results in quoted dimensions greater than the dimensions that would be determined by using other accepted methods. The definition of "Unit" and the calculation method to be relied upon is set forth in the Developer's Prospectus. The illustrations and images are conceptual and may vary from concept to actual construction. The floor plan, unit layout, locations of windows, doors, closets, plumbing fixtures, mechanical equipment, appliances, structural elements, architectural design elements, and the uses, configurations, and entries to rooms may change with based on final approved plans, permitting, and construction. The furniture plan and the uses of space illustrated are suggested uses only and not intended to guarantee any specific use of space. Furnishings, design features, fixtures, and décor illustrated are conceptual and may vary upon completion. The Developer River North Property Owner LLC is a licensee of ALTA Development LLC who is not the Developer. © 2023 with all rights reserved River North Property Owner LLC

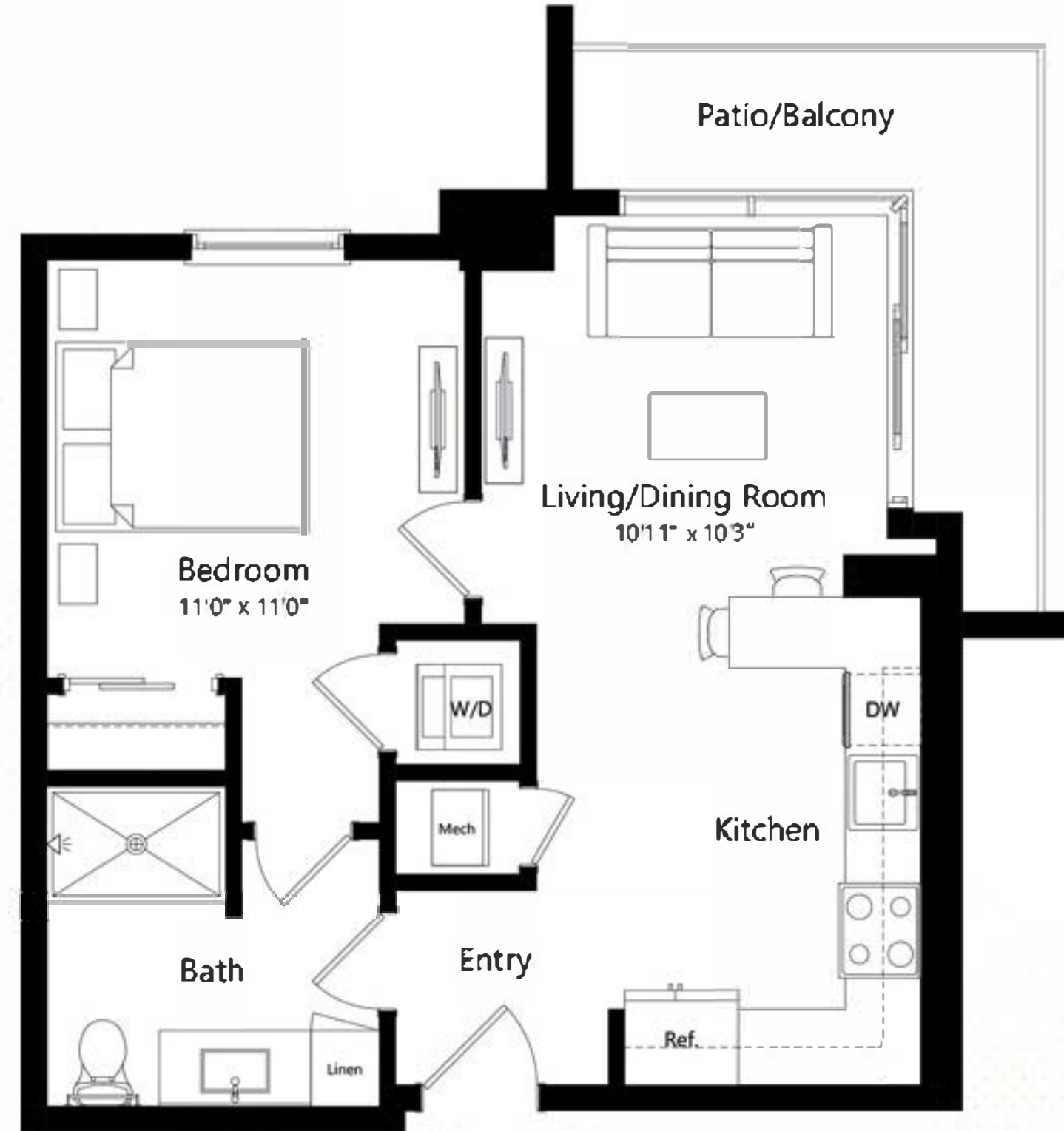


A2

1 BEDROOM 1 BATH

14

RIVER DISTRICT
MIAMI



575 | 175

SQ FT | M

The dimensions stated for this unit floor plan are approximate because there are various recognized methods for calculating the square footage of a unit. The square footage stated here is calculated from the exterior boundaries of the exterior walls to the centerline of interior demising walls without deductions for setbacks, curves, or architectural features. This method typically results in quoted dimensions greater than the dimensions that would be determined by using other accepted methods. The definition of "Unit" and the calculation method to be relied upon is set forth in the Developer's Prospectus. The illustrations and images are conceptual and may vary from concept to actual construction. The floor plan, unit layout, locations of windows, doors, closets, plumbing fixtures, mechanical equipment, appliances, structural elements, architectural design elements, and the uses, configurations, and entries to rooms may change with based on final approved plans, permitting, and construction. The furniture plan and the uses of space illustrated are suggested uses only and not intended to guarantee any specific use of space. Furnishings, design features, fixtures, and décor illustrated are conceptual and may vary upon completion. The Developer River North Property Owner LLC, is a licensee of ALTA Development LLC who is not the Developer. © 2023 with all rights reserved River North Property Owner LLC.



B1

1 BEDROOM 1 BATH

14

RIVER DISTRICT
MIAMI



640 | 195

SQ FT | M

The dimensions stated for this unit floor plan are approximate because there are various recognized methods for calculating the square footage of a unit. The square footage stated here is calculated from the exterior boundaries of the exterior walls to the centerline of interior demising walls without deductions for setbacks, curves, or architectural features. This method typically results in quoted dimensions greater than the dimensions that would be determined by using other accepted methods. The definition of "Unit" and the calculation method to be relied upon is set forth in the Developer's Prospectus. The illustrations and images are conceptual and may vary from concept to actual construction. The floor plan, unit layout, locations of windows, doors, closets, plumbing fixtures, mechanical equipment, appliances, structural elements, architectural design elements, and the uses, configurations, and entries to rooms may change with based on final approved plans, permitting, and construction. The furniture plan and the uses of space illustrated are suggested uses only and not intended to guarantee any specific use of space. Furnishings, design features, fixtures, and décor illustrated are conceptual and may vary upon completion. The Developer River North Property Owner LLC, is a licensee of ALTA Development LLC who is not the Developer. © 2023 with all rights reserved River North Property Owner LLC

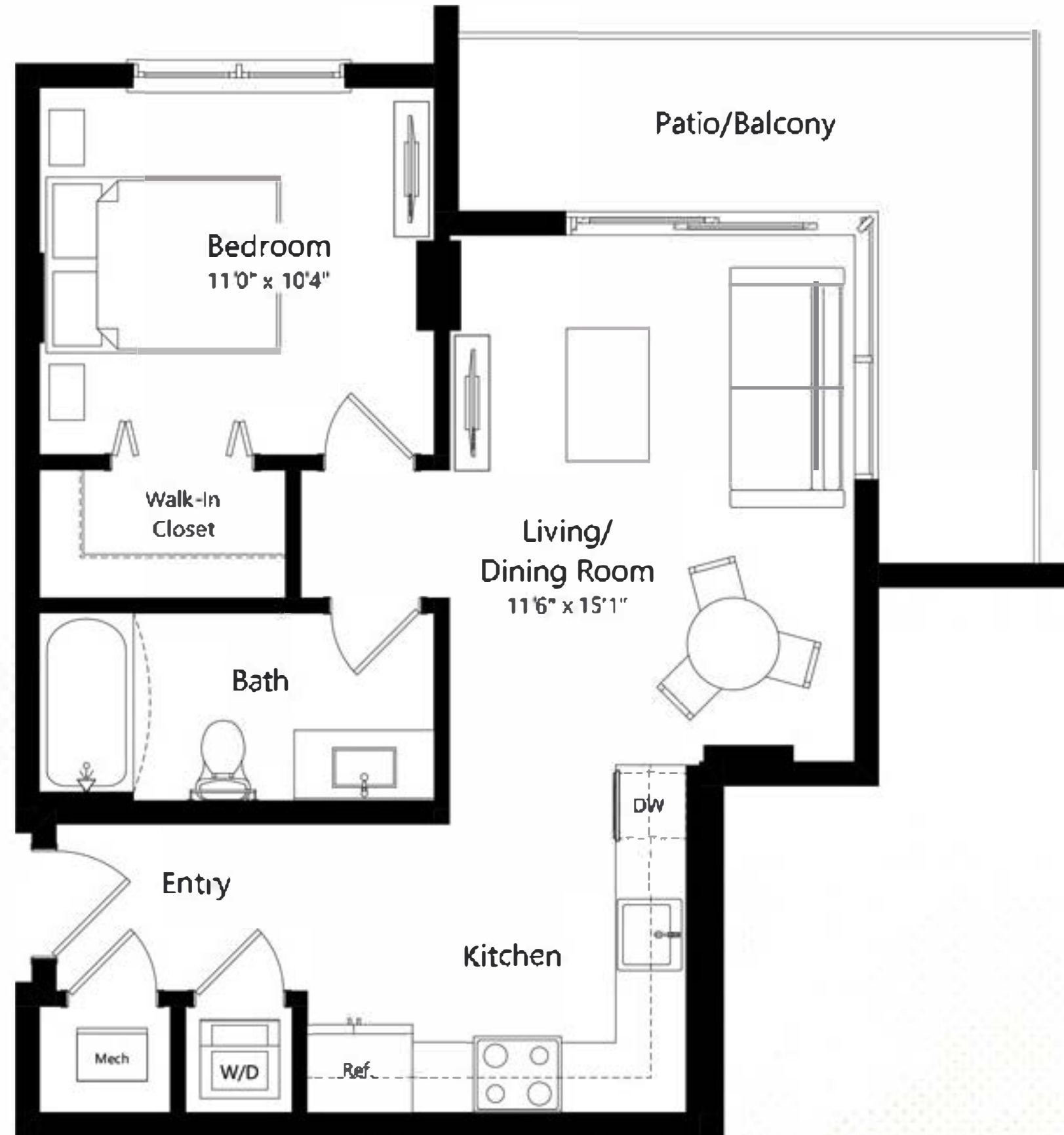


B2

1 BEDROOM 1 BATH

14

RIVER DISTRICT
MIAMI



640 | 195

SQ FT | M

The dimensions stated for this unit floor plan are approximate because there are various recognized methods for calculating the square footage of a unit. The square footage stated here is calculated from the exterior boundaries of the exterior walls to the centerline of interior demising walls without deductions for setbacks, curves, or architectural features. This method typically results in quoted dimensions greater than the dimensions that would be determined by using other accepted methods. The definition of "Unit" and the calculation method to be relied upon is set forth in the Developer's Prospectus. The illustrations and images are conceptual and may vary from concept to actual construction. The floor plan, unit layout, locations of windows, doors, closets, plumbing fixtures, mechanical equipment, appliances, structural elements, architectural design elements, and the uses, configurations, and entries to rooms may change with based on final approved plans, permitting, and construction. The furniture plan and the uses of space illustrated are suggested uses only and not intended to guarantee any specific use of space. Furnishings, design features, fixtures, and décor illustrated are conceptual and may vary upon completion. The Developer River North Property Owner LLC, is a licensee of ALTA Development LLC who is not the Developer. © 2023 with all rights reserved River North Property Owner LLC.



B3

1 BEDROOM 1 BATH

14

RIVER DISTRICT
MIAMI



640 | 195

SQ FT | M

The dimensions stated for this unit floor plan are approximate because there are various recognized methods for calculating the square footage of a unit. The square footage stated here is calculated from the exterior boundaries of the exterior walls to the centerline of interior demising walls without deductions for setbacks, curves, or architectural features. This method typically results in quoted dimensions greater than the dimensions that would be determined by using other accepted methods. The definition of "Unit" and the calculation method to be relied upon is set forth in the Developer's Prospectus. The illustrations and images are conceptual and may vary from concept to actual construction. The floor plan, unit layout, locations of windows, doors, closets, plumbing fixtures, mechanical equipment, appliances, structural elements, architectural design elements, and the uses, configurations, and entries to rooms may change with based on final approved plans, permitting, and construction. The furniture plan and the uses of space illustrated are suggested uses only and not intended to guarantee any specific use of space. Furnishings, design features, fixtures, and décor illustrated are conceptual and may vary upon completion. The Developer River North Property Owner LLC, is a licensee of ALTA Development LLC who is not the Developer. © 2023 with all rights reserved River North Property Owner LLC.



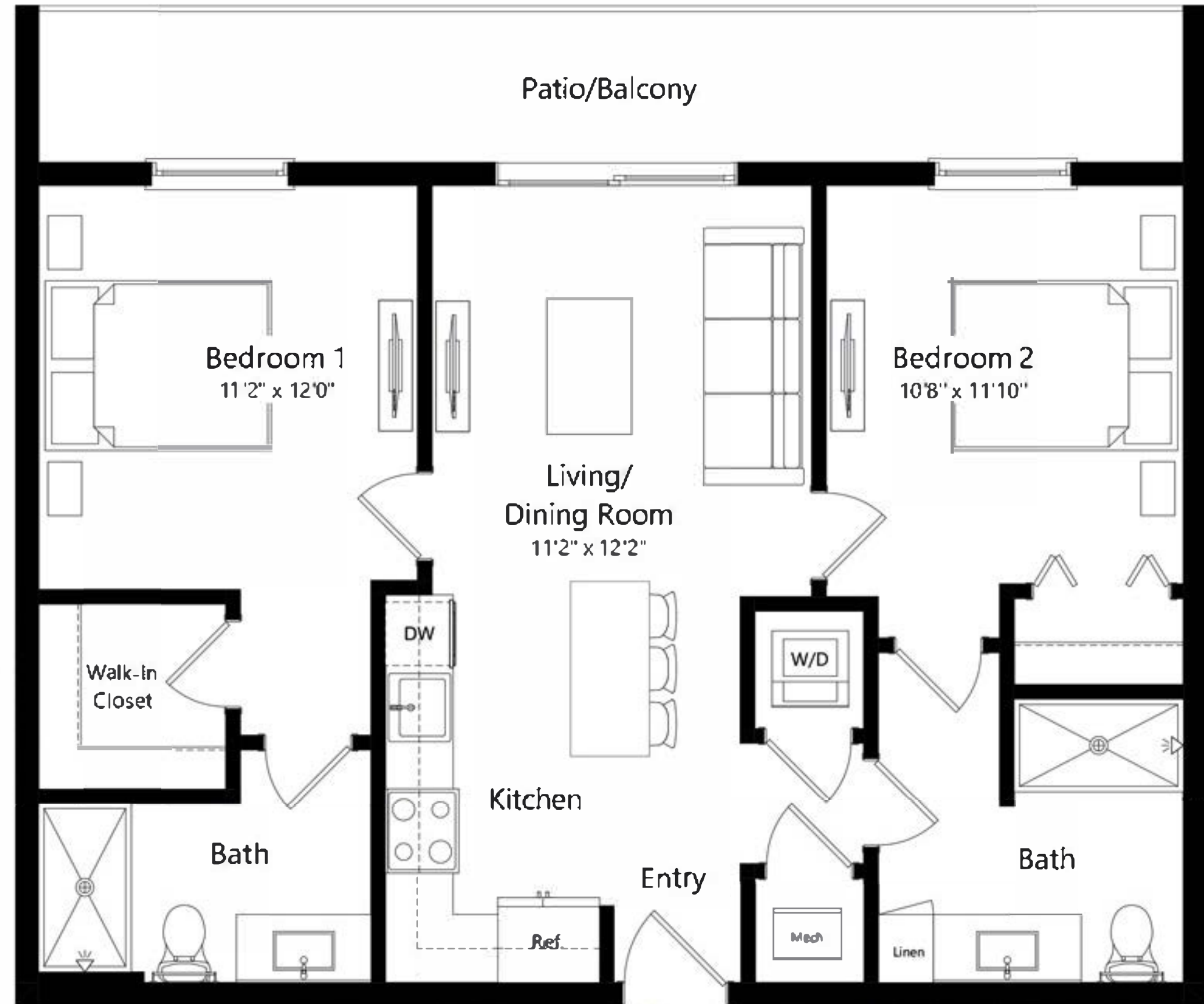
C1

2 BEDROOM 2 BATH

14

RIVER DISTRICT

MIAMI



865 | 264

SQ FT | M

The dimensions stated for this unit floor plan are approximate because there are various recognized methods for calculating the square footage of a unit. The square footage stated here is calculated from the exterior boundaries of the exterior walls to the centerline of interior demising walls without deductions for setbacks, curves, or architectural features. This method typically results in quoted dimensions greater than the dimensions that would be determined by using other accepted methods. The definition of "Unit" and the calculation method to be relied upon is set forth in the Developer's Prospectus. The illustrations and images are conceptual and may vary from concept to actual construction. The floor plan, unit layout, locations of windows, doors, closets, plumbing fixtures, mechanical equipment, appliances, structural elements, architectural design elements, and the uses, configurations, and entries to rooms may change with based on final approved plans, permitting, and construction. The furniture plan and the uses of space illustrated are suggested uses only and not intended to guarantee any specific use of space. Furnishings, design features, fixtures, and décor illustrated are conceptual and may vary upon completion. The Developer River North Property Owner LLC, is a licensee of ALTA Development LLC who is not the Developer. © 2023 with all rights reserved River North Property Owner LLC.



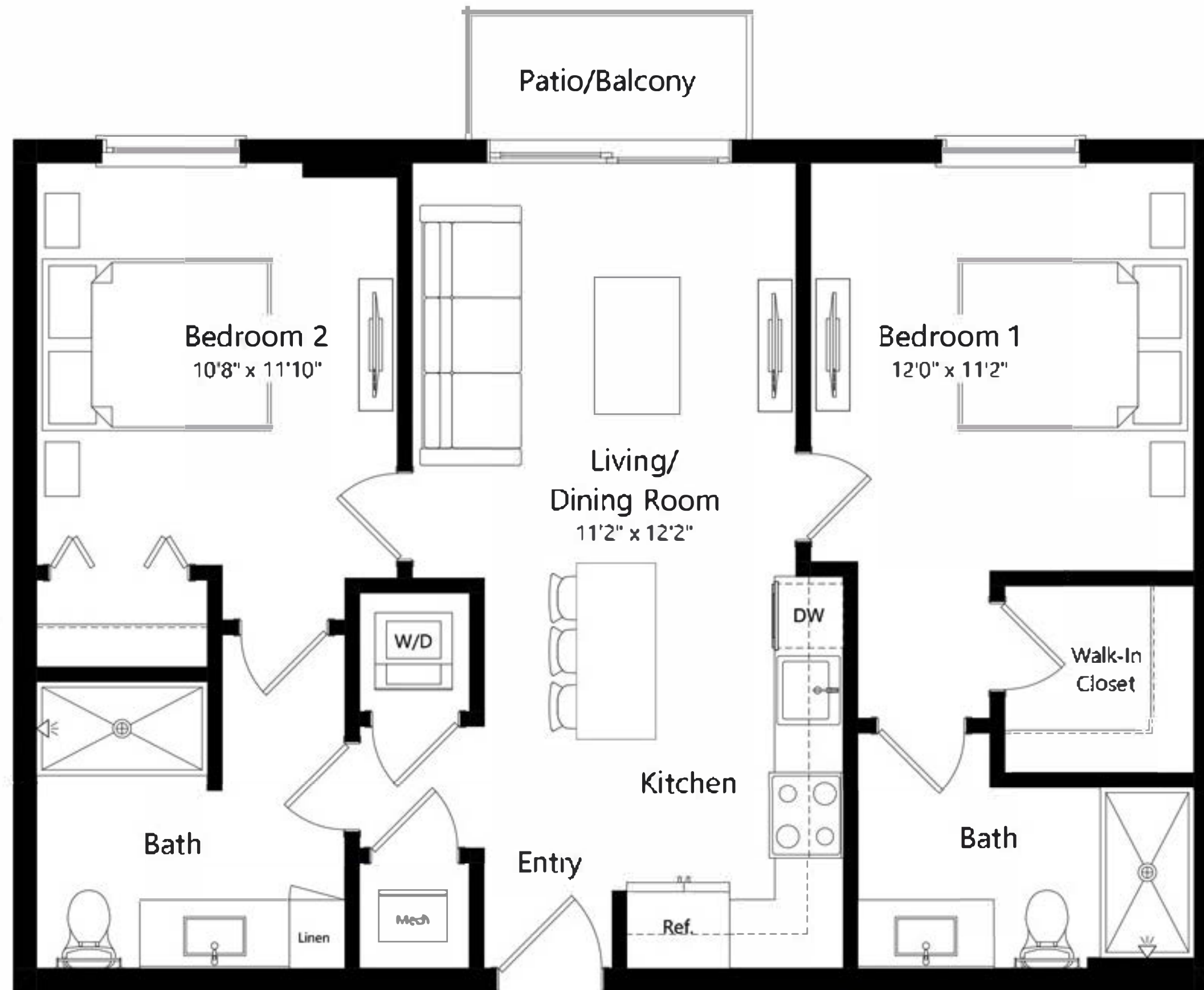
C1A

2 BEDROOM 2 BATH

14

RIVER DISTRICT

MIAMI



875 | 267

SQ FT | M

The dimensions stated for this unit floor plan are approximate because there are various recognized methods for calculating the square footage of a unit. The square footage stated here is calculated from the exterior boundaries of the exterior walls to the centerline of interior demising walls without deductions for setbacks, curves, or architectural features. This method typically results in quoted dimensions greater than the dimensions that would be determined by using other accepted methods. The definition of "Unit" and the calculation method to be relied upon is set forth in the Developer's Prospectus. The illustrations and images are conceptual and may vary from concept to actual construction. The floor plan, unit layout, locations of windows, doors, closets, plumbing fixtures, mechanical equipment, appliances, structural elements, architectural design elements, and the uses, configurations, and entries to rooms may change with based on final approved plans, permitting, and construction. The furniture plan and the uses of space illustrated are suggested uses only and not intended to guarantee any specific use of space. Furnishings, design features, fixtures, and décor illustrated are conceptual and may vary upon completion. The Developer River North Property Owner LLC is a licensee of ALTA Development LLC who is not the Developer. © 2023 with all rights reserved River North Property Owner LLC

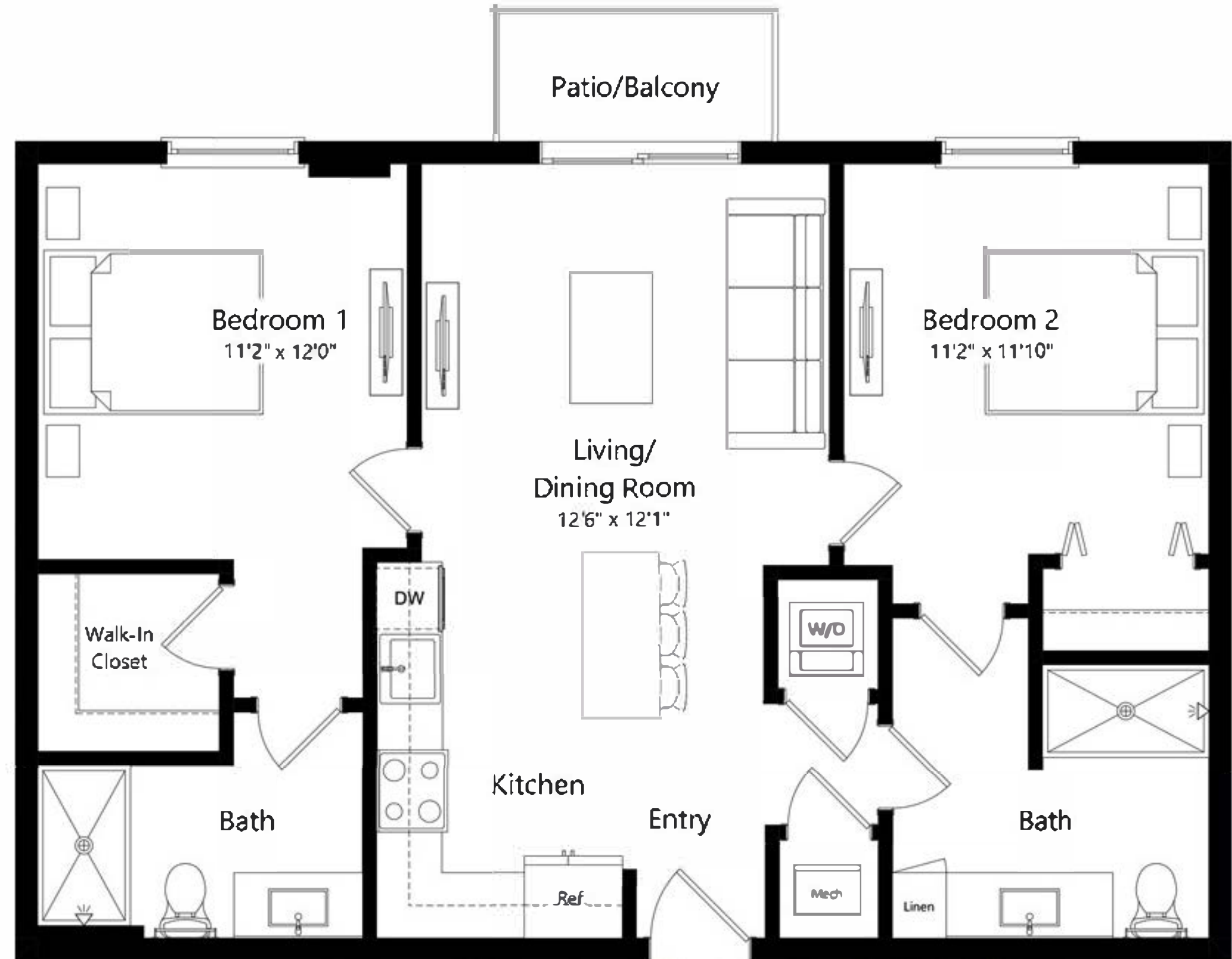


C1B

2 BEDROOM 2 BATH

14

RIVER DISTRICT
MIAMI



880 | 268

SQ FT | M

The dimensions stated for this unit floor plan are approximate because there are various recognized methods for calculating the square footage of a unit. The square footage stated here is calculated from the exterior boundaries of the exterior walls to the centerline of interior demising walls without deductions for setbacks, curves, or architectural features. This method typically results in quoted dimensions greater than the dimensions that would be determined by using other accepted methods. The definition of "Unit" and the calculation method to be relied upon is set forth in the Developer's Prospectus. The illustrations and images are conceptual and may vary from concept to actual construction. The floor plan, unit layout, locations of windows, doors, closets, plumbing fixtures, mechanical equipment, appliances, structural elements, architectural design elements, and the uses, configurations, and entries to rooms may change with based on final approved plans, permitting, and construction. The furniture plan and the uses of space illustrated are suggested uses only and not intended to guarantee any specific use of space. Furnishings, design features, fixtures, and décor illustrated are conceptual and may vary upon completion. The Developer River North Property Owner LLC, is a licensee of ALTA Development LLC who is not the Developer. © 2023 with all rights reserved River North Property Owner LLC.



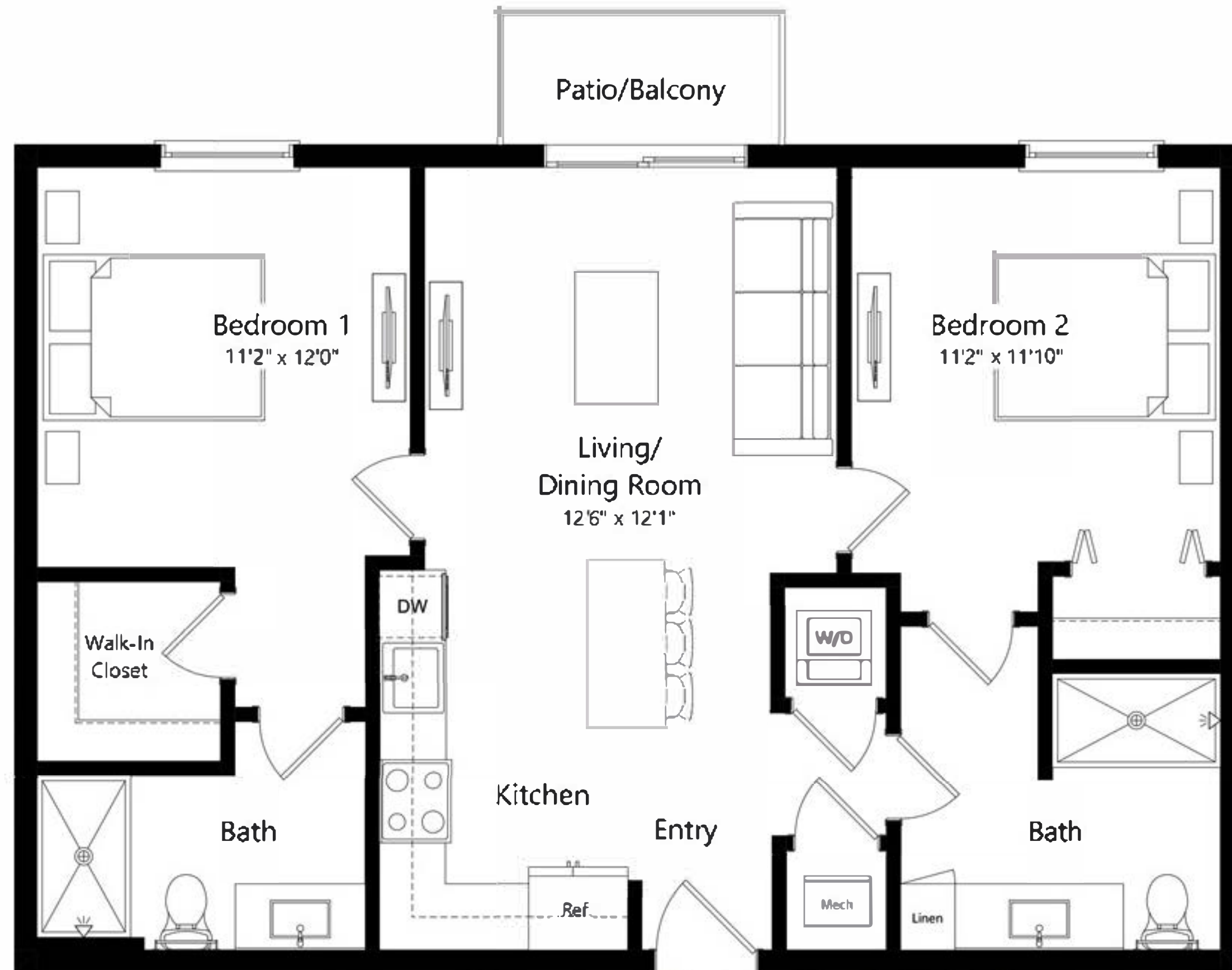
C2

2 BEDROOM 2 BATH

14

RIVER DISTRICT

MIAMI



910 | 277

SQ FT | M

The dimensions stated for this unit floor plan are approximate because there are various recognized methods for calculating the square footage of a unit. The square footage stated here is calculated from the exterior boundaries of the exterior walls to the centerline of interior demising walls without deductions for setbacks, curves, or architectural features. This method typically results in quoted dimensions greater than the dimensions that would be determined by using other accepted methods. The definition of "Unit" and the calculation method to be relied upon is set forth in the Developer's Prospectus. The illustrations and images are conceptual and may vary from concept to actual construction. The floor plan, unit layout, locations of windows, doors, closets, plumbing fixtures, mechanical equipment, appliances, structural elements, architectural design elements, and the uses, configurations, and entries to rooms may change with based on final approved plans, permitting, and construction. The furniture plan and the uses of space illustrated are suggested uses only and not intended to guarantee any specific use of space. Furnishings, design features, fixtures, and décor illustrated are conceptual and may vary upon completion. The Developer River North Property Owner LLC, is a licensee of ALTA Development LLC who is not the Developer. © 2023 with all rights reserved River North Property Owner LLC



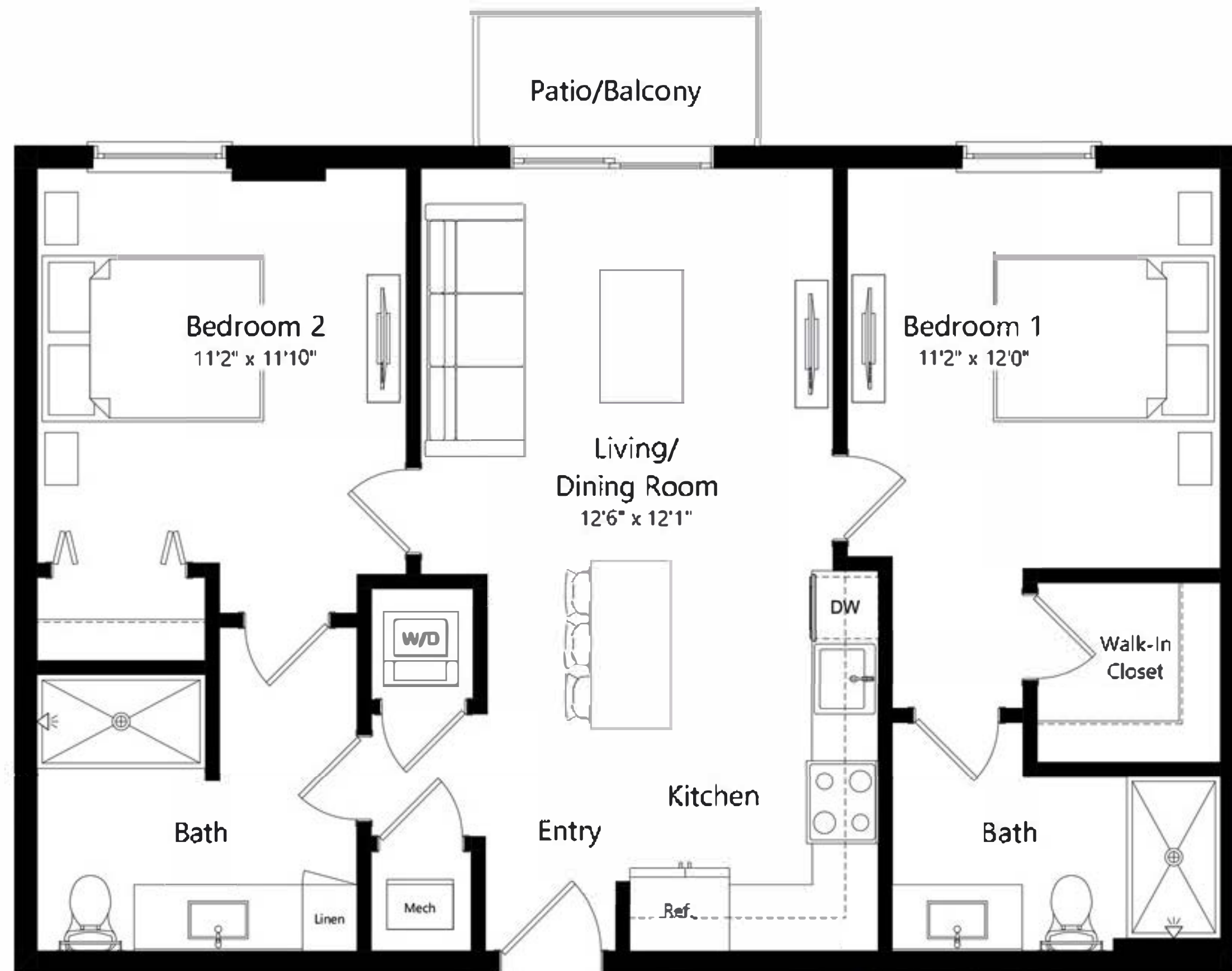
C2A

2 BEDROOM 2 BATH

14

RIVER DISTRICT

MIAMI



915 | 279

SQ FT | M

The dimensions stated for this unit floor plan are approximate because there are various recognized methods for calculating the square footage of a unit. The square footage stated here is calculated from the exterior boundaries of the exterior walls to the centerline of interior demising walls without deductions for setbacks, curves, or architectural features. This method typically results in quoted dimensions greater than the dimensions that would be determined by using other accepted methods. The definition of "Unit" and the calculation method to be relied upon is set forth in the Developer's Prospectus. The illustrations and images are conceptual and may vary from concept to actual construction. The floor plan, unit layout, locations of windows, doors, closets, plumbing fixtures, mechanical equipment, appliances, structural elements, architectural design elements, and the uses, configurations, and entries to rooms may change with based on final approved plans, permitting, and construction. The furniture plan and the uses of space illustrated are suggested uses only and not intended to guarantee any specific use of space. Furnishings, design features, fixtures, and décor illustrated are conceptual and may vary upon completion. The Developer River North Property Owner LLC, is a licensee of ALTA Development LLC who is not the Developer. © 2023 with all rights reserved River North Property Owner LLC.

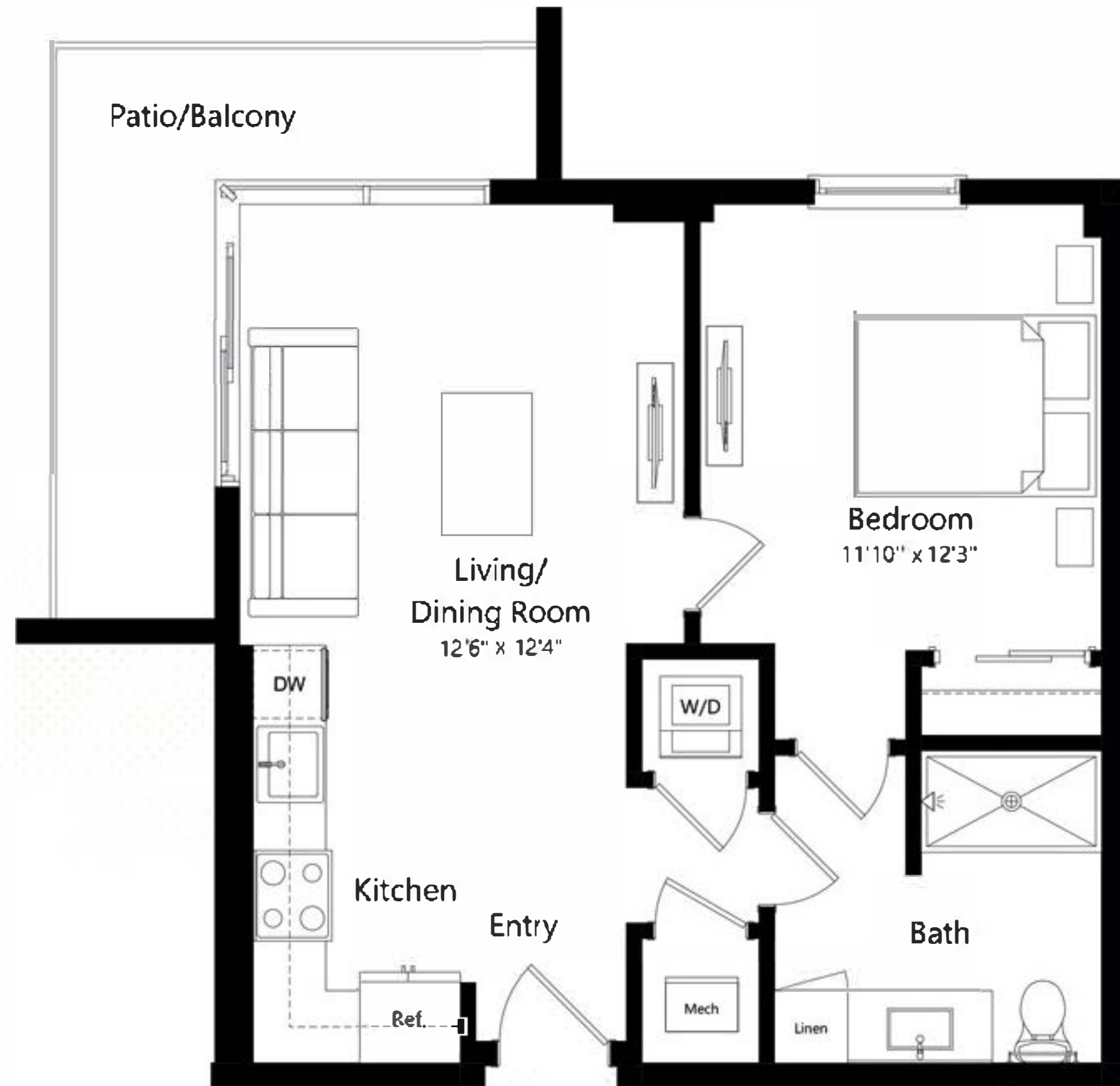


D1

1 BEDROOM 1 BATH

14

RIVER DISTRICT
MIAMI



600 | 183

SQ FT | M

The dimensions stated for this unit floor plan are approximate because there are various recognized methods for calculating the square footage of a unit. The square footage stated here is calculated from the exterior boundaries of the exterior walls to the centerline of interior demising walls without deductions for setbacks, curves, or architectural features. This method typically results in quoted dimensions greater than the dimensions that would be determined by using other accepted methods. The definition of "Unit" and the calculation method to be relied upon is set forth in the Developer's Prospectus. The illustrations and images are conceptual and may vary from concept to actual construction. The floor plan, unit layout, locations of windows, doors, closets, plumbing fixtures, mechanical equipment, appliances, structural elements, architectural design elements, and the uses, configurations, and entries to rooms may change with based on final approved plans, permitting, and construction. The furniture plan and the uses of space illustrated are suggested uses only and not intended to guarantee any specific use of space. Furnishings, design features, fixtures, and décor illustrated are conceptual and may vary upon completion. The Developer River North Property Owner LLC, is a licensee of ALTA Development LLC who is not the Developer. © 2023 with all rights reserved River North Property Owner LLC.

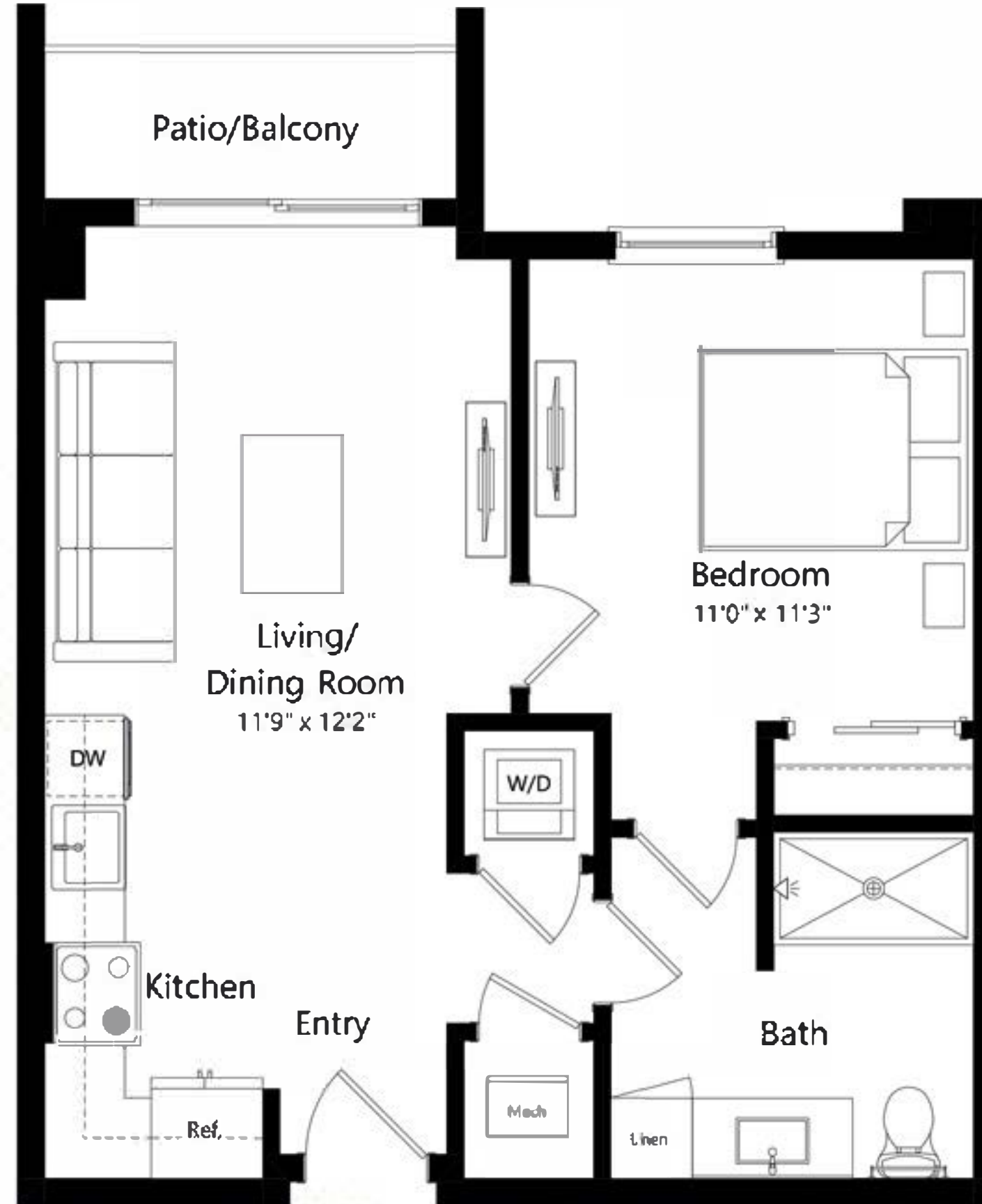


D2

1 BEDROOM 1 BATH

14

RIVER DISTRICT
MIAMI



560 | 171

SQ FT | M

The dimensions stated for this unit floor plan are approximate because there are various recognized methods for calculating the square footage of a unit. The square footage stated here is calculated from the exterior boundaries of the exterior walls to the centerline of interior demising walls without deductions for setbacks, curves, or architectural features. This method typically results in quoted dimensions greater than the dimensions that would be determined by using other accepted methods. The definition of "Unit" and the calculation method to be relied upon is set forth in the Developer's Prospectus. The illustrations and images are conceptual and may vary from concept to actual construction. The floor plan, unit layout, locations of windows, doors, closets, plumbing fixtures, mechanical equipment, appliances, structural elements, architectural design elements, and the uses, configurations, and entries to rooms may change with based on final approved plans, permitting, and construction. The furniture plan and the uses of space illustrated are suggested uses only and not intended to guarantee any specific use of space. Furnishings, design features, fixtures, and décor illustrated are conceptual and may vary upon completion. The Developer River North Property Owner LLC, is a licensee of ALTA Development LLC who is not the Developer. © 2023 with all rights reserved River North Property Owner LLC

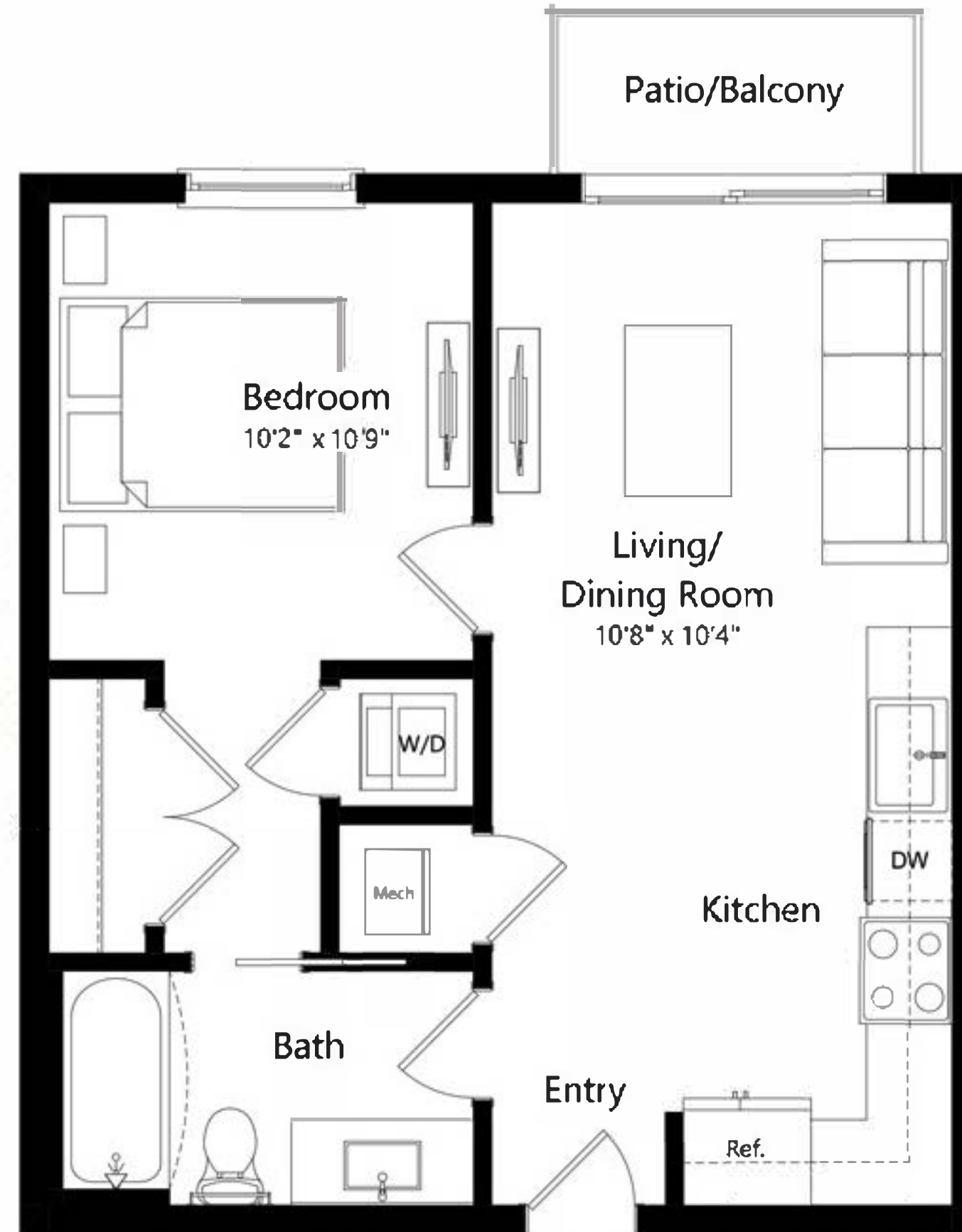


D2A

1 BEDROOM 1 BATH

14

RIVER DISTRICT
MIAMI



570 | 174

SQ FT | M

The dimensions stated for this unit floor plan are approximate because there are various recognized methods for calculating the square footage of a unit. The square footage stated here is calculated from the exterior boundaries of the exterior walls to the centerline of interior demising walls without deductions for setbacks, curves, or architectural features. This method typically results in quoted dimensions greater than the dimensions that would be determined by using other accepted methods. The definition of "Unit" and the calculation method to be relied upon is set forth in the Developer's Prospectus. The illustrations and images are conceptual and may vary from concept to actual construction. The floor plan, unit layout, locations of windows, doors, closets, plumbing fixtures, mechanical equipment, appliances, structural elements, architectural design elements, and the uses, configurations, and entries to rooms may change with based on final approved plans, permitting, and construction. The furniture plan and the uses of space illustrated are suggested uses only and not intended to guarantee any specific use of space. Furnishings, design features, fixtures, and décor illustrated are conceptual and may vary upon completion. The Developer River North Property Owner LLC, is a licensee of ALTA Development LLC who is not the Developer. © 2023 with all rights reserved River North Property Owner LLC

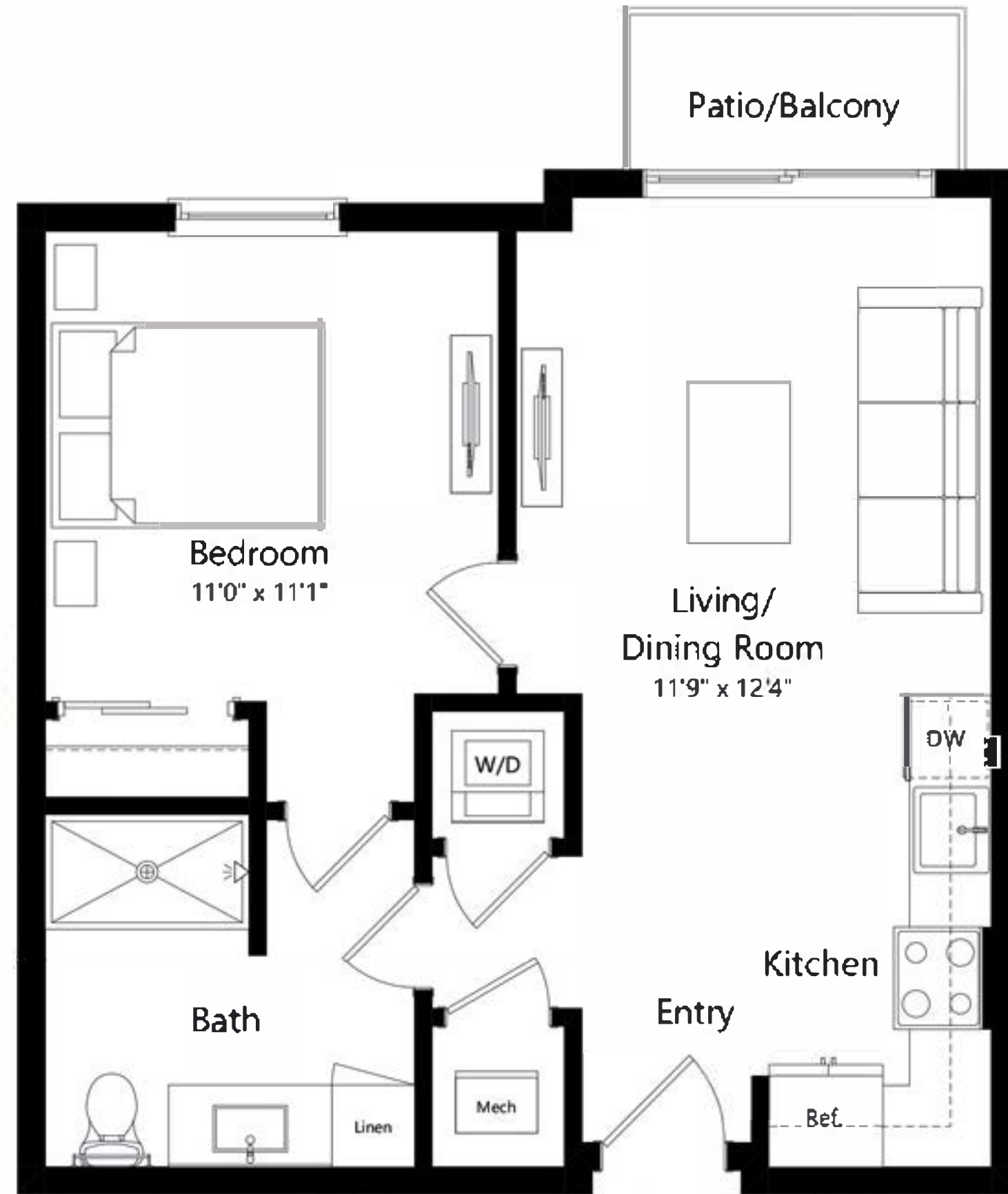


D3

1 BEDROOM 1 BATH

14

RIVER DISTRICT
MIAMI



580 | 177

SQ FT | M

The dimensions stated for this unit floor plan are approximate because there are various recognized methods for calculating the square footage of a unit. The square footage stated here is calculated from the exterior boundaries of the exterior walls to the centerline of interior demising walls without deductions for setbacks, curves, or architectural features. This method typically results in quoted dimensions greater than the dimensions that would be determined by using other accepted methods. The definition of "Unit" and the calculation method to be relied upon is set forth in the Developer's Prospectus. The illustrations and images are conceptual and may vary from concept to actual construction. The floor plan, unit layout, locations of windows, doors, closets, plumbing fixtures, mechanical equipment, appliances, structural elements, architectural design elements, and the uses, configurations, and entries to rooms may change with based on final approved plans, permitting, and construction. The furniture plan and the uses of space illustrated are suggested uses only and not intended to guarantee any specific use of space. Furnishings, design features, fixtures, and doors illustrated are conceptual and may vary upon completion. The Developer River North Property Owner LLC is a licensee of ALTA Development LLC who is not the Developer. © 2023 with all rights reserved River North Property Owner LLC.



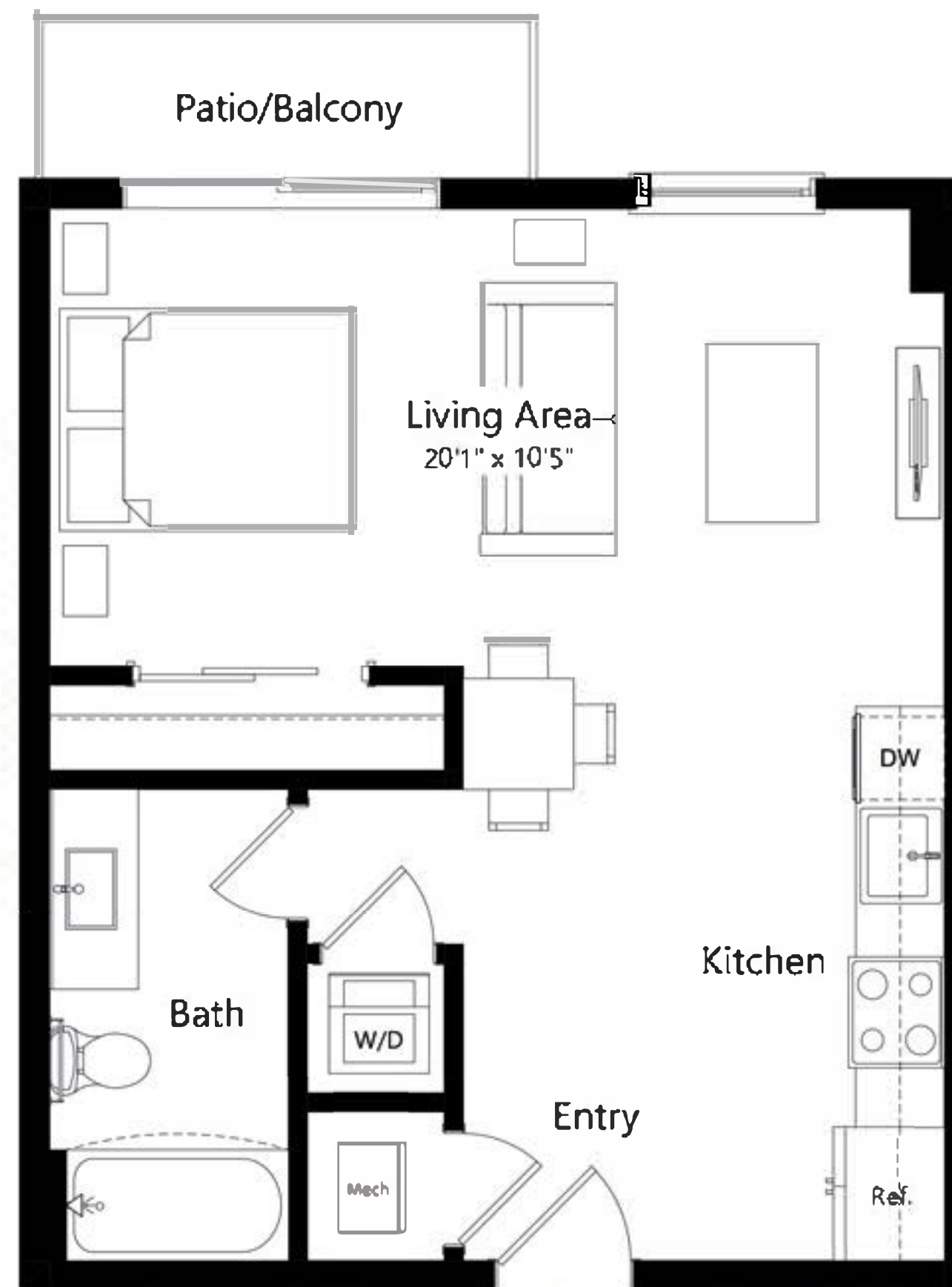
E1

STUDIO 1 BATH

14

RIVER DISTRICT

MIAMI



520 | 158

SQ FT | M

The dimensions stated for this unit floor plan are approximate because there are various recognized methods for calculating the square footage of a unit. The square footage stated here is calculated from the exterior boundaries of the exterior walls to the centerline of interior demising walls without deductions for setbacks, curves, or architectural features. This method typically results in quoted dimensions greater than the dimensions that would be determined by using other accepted methods. The definition of "Unit" and the calculation method to be relied upon is set forth in the Developer's Prospectus. The illustrations and images are conceptual and may vary from concept to actual construction. The floor plan, unit layout, locations of windows, doors, closets, plumbing fixtures, mechanical equipment, appliances, structural elements, architectural design elements, and the uses, configurations, and entries to rooms may change with based on final approved plans, permitting, and construction. The furniture plan and the uses of space illustrated are suggested uses only and not intended to guarantee any specific use of space. Furnishings, design features, fixtures, and décor illustrated are conceptual and may vary upon completion. The Developer River North Property Owner LLC, is a licensee of ALTA Development LLC who is not the Developer. © 2023 with all rights reserved River North Property Owner LLC.

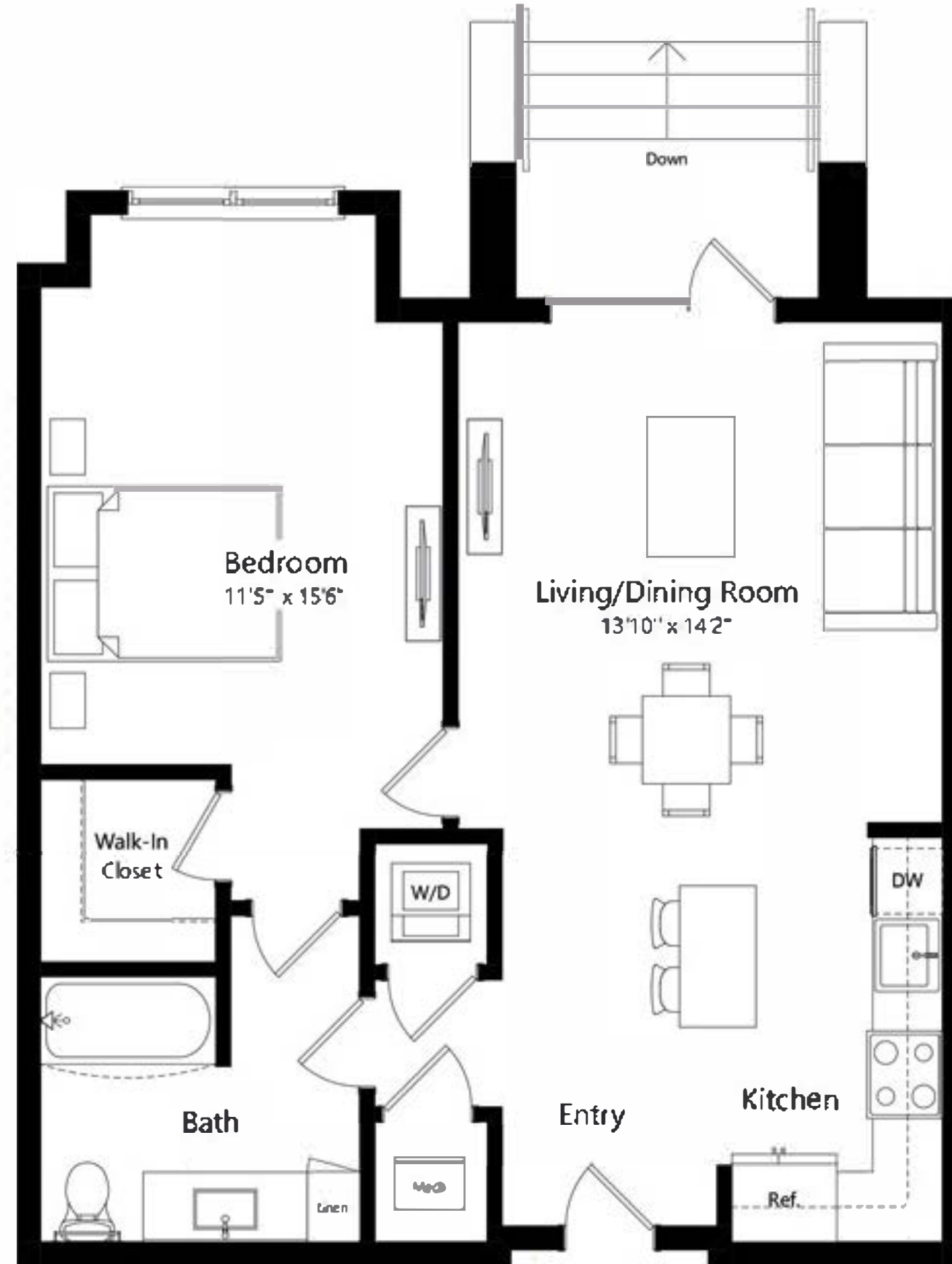


F2

1 BEDROOM 1 BATH

14

RIVER DISTRICT
MIAMI



740 | 226

SQ FT | M

The dimensions stated for this unit floor plan are approximate because there are various recognized methods for calculating the square footage of a unit. The square footage stated here is calculated from the exterior boundaries of the exterior walls to the centerline of interior demising walls without deductions for alcoves, curves, or architectural features. This method typically results in quoted dimensions greater than the dimensions that would be determined by using other accepted methods. The definition of "Unit" and the calculation method to be relied upon is set forth in the Developer's Prospectus. The illustrations and images are conceptual and may vary from concept to actual construction. The floor plan, unit layout, locations of windows, doors, closets, plumbing fixtures, mechanical equipment, appliances, structural elements, architectural design elements, and the uses, configurations, and entries to rooms may change with based on final approved plans, permitting, and construction. The furniture plan and the uses of space illustrated are suggested uses only and not intended to guarantee any specific use of space. Furnishings, design features, fixtures, and décor illustrated are conceptual and may vary upon completion. The Developer River North Property Owner LLC, is a licensee of ALTA Development LLC who is not the Developer. © 2023 with all rights reserved River North Property Owner LLC

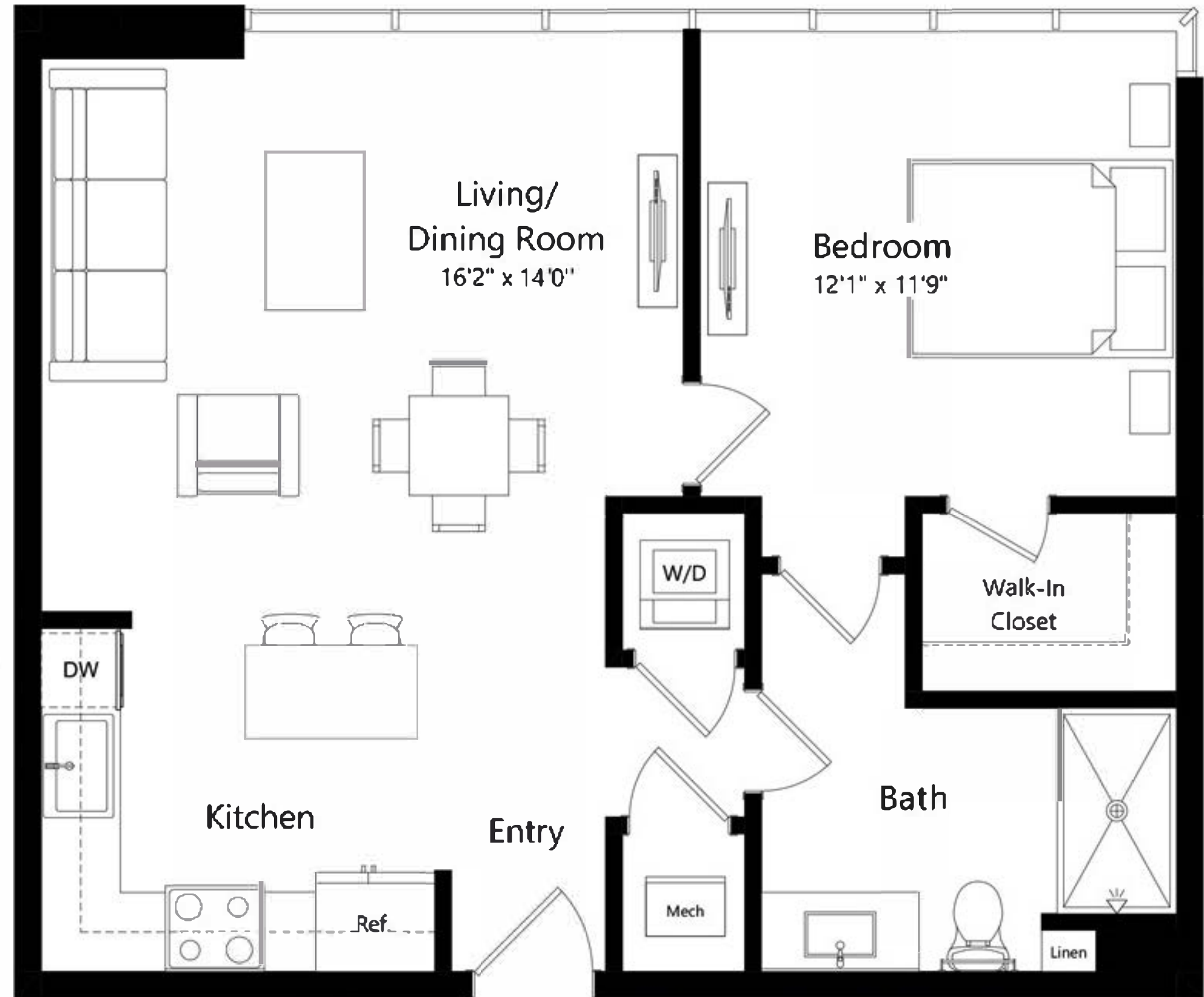


F3

1 BEDROOM 1 BATH

14

RIVER DISTRICT
MIAMI



700 | 213

SQ FT | M

The dimensions stated for this unit floor plan are approximate because there are various recognized methods for calculating the square footage of a unit. The square footage stated here is calculated from the exterior boundaries of the exterior walls to the centerline of interior demising walls without deductions for setbacks, curves, or architectural features. This method typically results in quoted dimensions greater than the dimensions that would be determined by using other accepted methods. The definition of "Unit" and the calculation method to be relied upon is set forth in the Developer's Prospectus. The illustrations and images are conceptual and may vary from concept to actual construction. The floor plan, unit layout, locations of windows, doors, closets, plumbing fixtures, mechanical equipment, appliances, structural elements, architectural design elements, and the uses, configurations, and entries to rooms may change with based on final approved plans, permitting, and construction. The furniture plan and the uses of space illustrated are suggested uses only and not intended to guarantee any specific use of space. Furnishings, design features, fixtures, and décor illustrated are conceptual and may vary upon completion. The Developer River North Property Owner LLC, is a licensee of ALTA Development LLC who is not the Developer. © 2023 with all rights reserved River North Property Owner LLC.

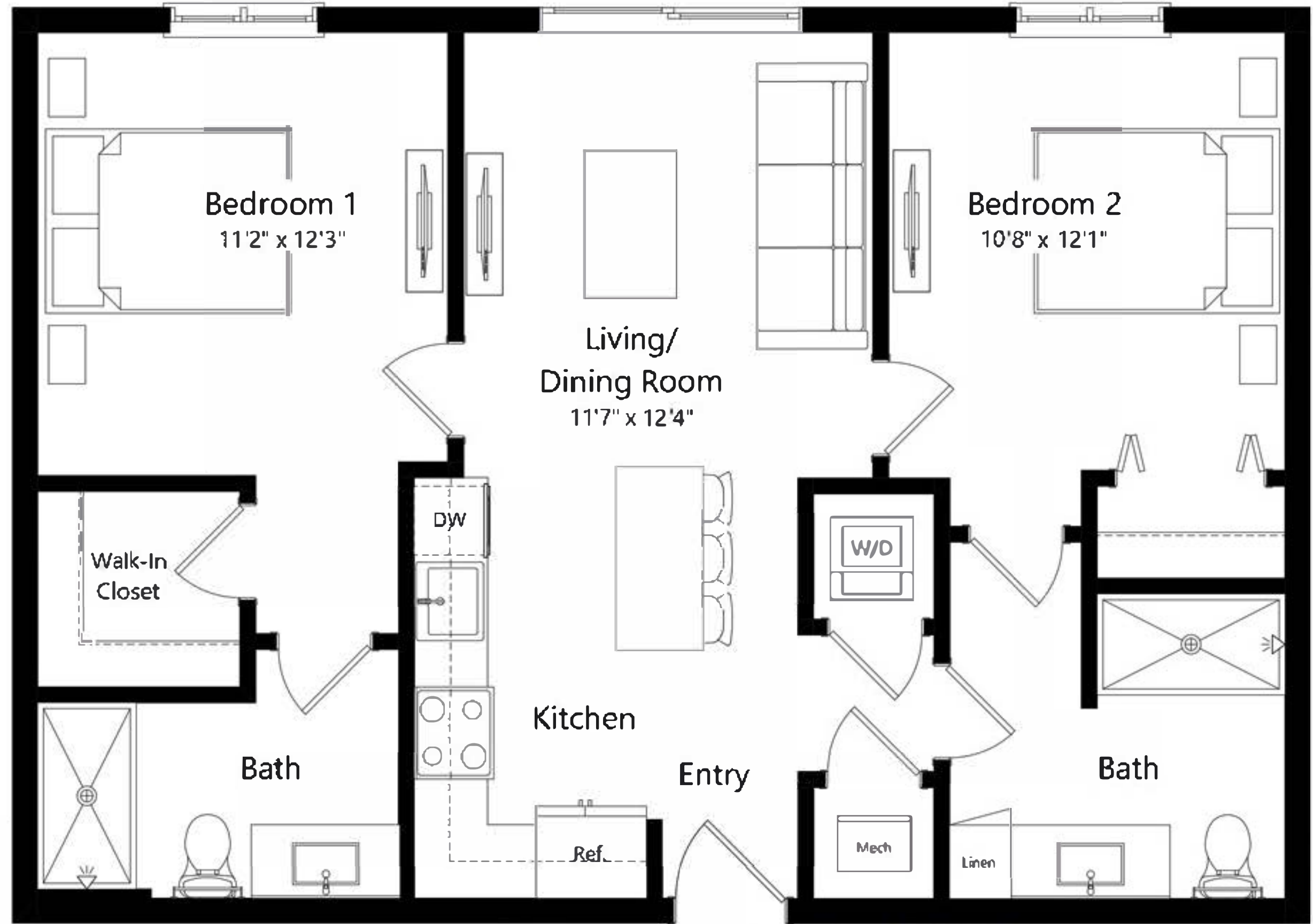


F5

2 BEDROOM 2 BATH

14

RIVER DISTRICT
MIAMI



880 | 268

SQ FT | M

The dimensions stated for this unit floor plan are approximate because there are various recognized methods for calculating the square footage of a unit. The square footage stated here is calculated from the exterior boundaries of the exterior walls to the centerline of interior demising walls without deductions for setbacks, curves, or architectural features. This method typically results in quoted dimensions greater than the dimensions that would be determined by using other accepted methods. The definition of "Unit" and the calculation method to be relied upon is set forth in the Developer's Prospectus. The illustrations and images are conceptual and may vary from concept to actual construction. The floor plan, unit layout, locations of windows, doors, closets, plumbing fixtures, mechanical equipment, appliances, structural elements, architectural design elements, and the uses, configurations, and entries to rooms may change with based on final approved plans, permitting, and construction. The furniture plan and the uses of space illustrated are suggested uses only and not intended to guarantee any specific use of space. Furnishings, design features, fixtures, and décor illustrated are conceptual and may vary upon completion. The Developer River North Property Owner LLC is a licensee of ALTA Development LLC who is not the Developer. © 2023 with all rights reserved River North Property Owner LLC.

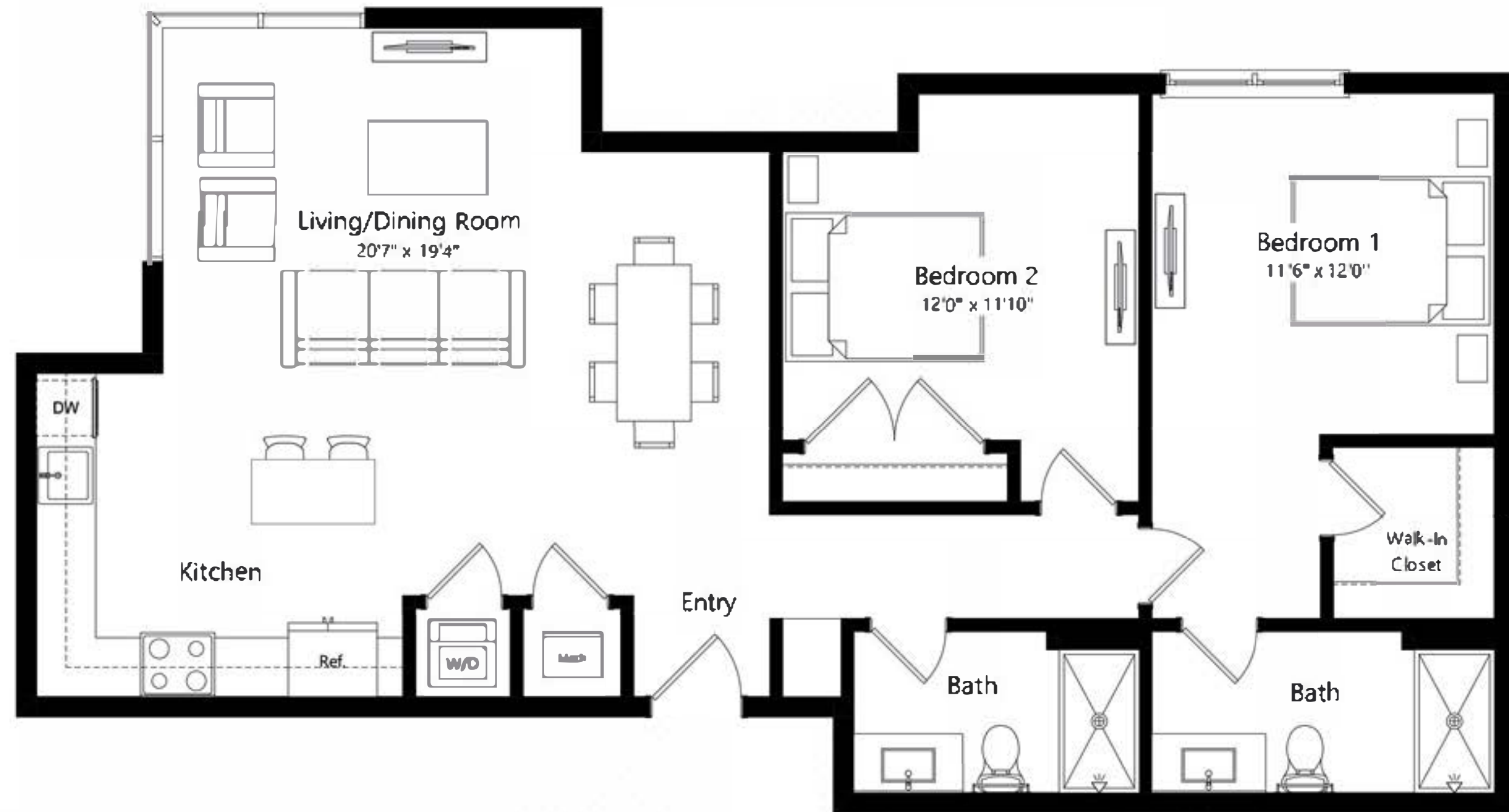


F6

2 BEDROOM 2 BATH

14

RIVER DISTRICT
MIAMI



1130 | 344

SQ FT | M

The dimensions stated for this unit floor plan are approximate because there are various recognized methods for calculating the square footage of a unit. The square footage stated here is calculated from the exterior boundaries of the exterior walls to the centerline of interior demising walls without deductions for setbacks, curves, or architectural features. This method typically results in quoted dimensions greater than the dimensions that would be determined by using other accepted methods. The definition of "Unit" and the calculation method to be relied upon is set forth in the Developer's Prospectus. The illustrations and images are conceptual and may vary from concept to actual construction. The floor plan, unit layout, locations of windows, doors, closets, plumbing fixtures, mechanical equipment, appliances, structural elements, architectural design elements, and the uses, configurations, and entries to rooms may change with based on final approved plans, permitting, and construction. The furniture plan and the uses of space illustrated are suggested uses only and not intended to guarantee any specific use of space. Furnishings, design features, fixtures, and décor illustrated are conceptual and may vary upon completion. The Developer River North Property Owner LLC, is a licensee of ALTA Development LLC who is not the Developer. © 2023 with all rights reserved River North Property Owner LLC.



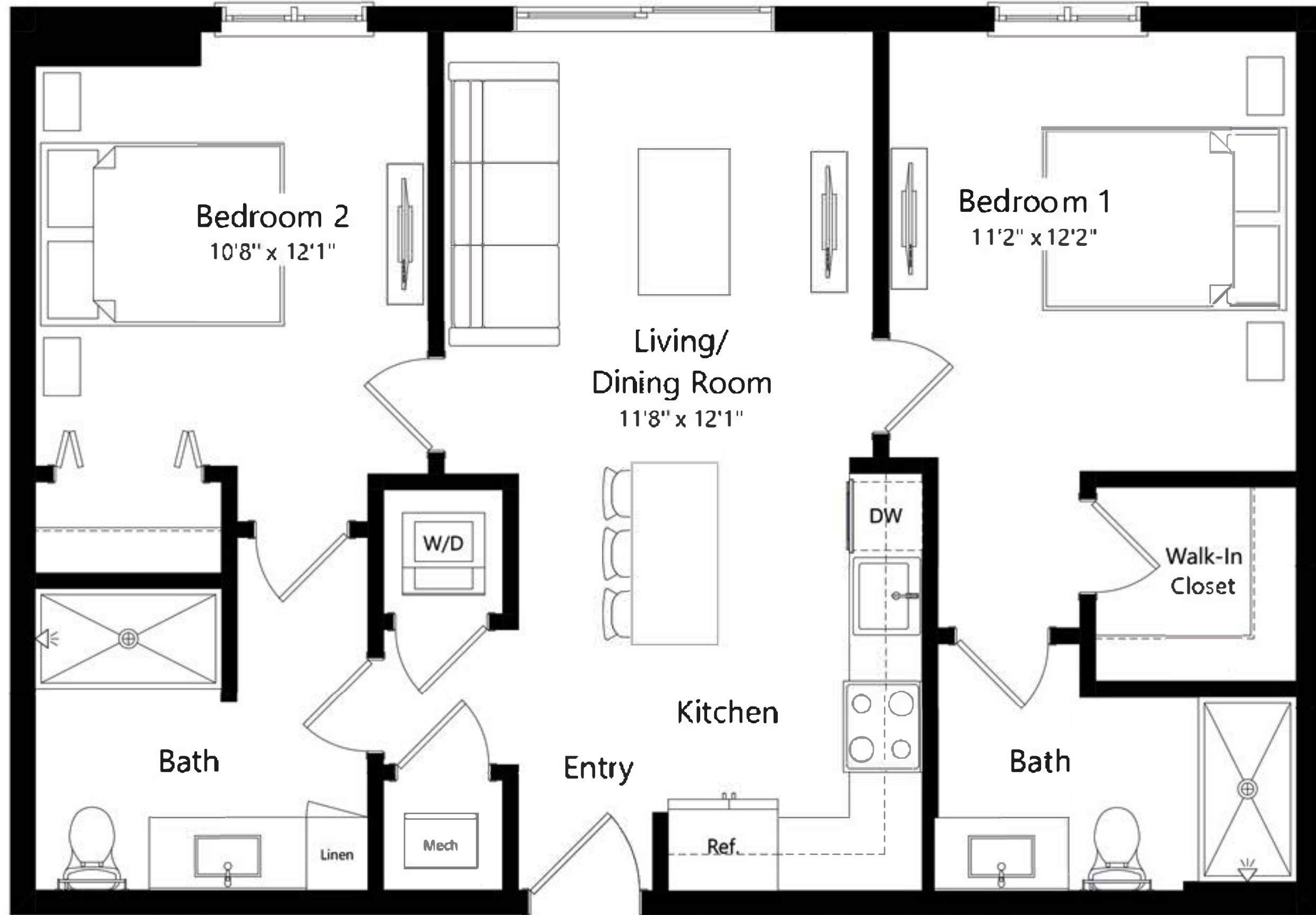
F7

2 BEDROOM 2 BATH

14

RIVER DISTRICT

MIAMI



875 | 267

SQ FT | M

The dimensions stated for this unit floor plan are approximate because there are various recognized methods for calculating the square footage of a unit. The square footage stated here is calculated from the exterior boundaries of the exterior walls to the centerline of interior demising walls without deductions for setbacks, curves, or architectural features. This method typically results in quoted dimensions greater than the dimensions that would be determined by using other accepted methods. The definition of "Unit" and the calculation method to be relied upon is set forth in the Developer's Prospectus. The illustrations and images are conceptual and may vary from concept to actual construction. The floor plan, unit layout, locations of windows, doors, closets, plumbing fixtures, mechanical equipment, appliances, structural elements, architectural design elements, and the uses, configurations, and entries to rooms may change with based on final approved plans, permitting, and construction. The furniture plan and the uses of space illustrated are suggested uses only and not intended to guarantee any specific use of space. Furnishings, design features, fixtures, and décor illustrated are conceptual and may vary upon completion. The Developer River North Property Owner LLC is a licensee of ALTA Development LLC who is not the Developer. © 2023 with all rights reserved River North Property Owner LLC.

