



WEST ELEVENTH

RESIDENCES MIAMI

# W11

The first centrally managed  
luxury condo residences to grant  
owners the option to host 365 days  
on Airbnb.



## Uniquely host on Airbnb

Ownership at West Eleventh comes with many advantages, but none more beneficial than our unique hosting on Airbnb. With the option to host 365 days on Airbnb, West Eleventh is the first centrally managed residential tower to offer owners this distinctive luxury.



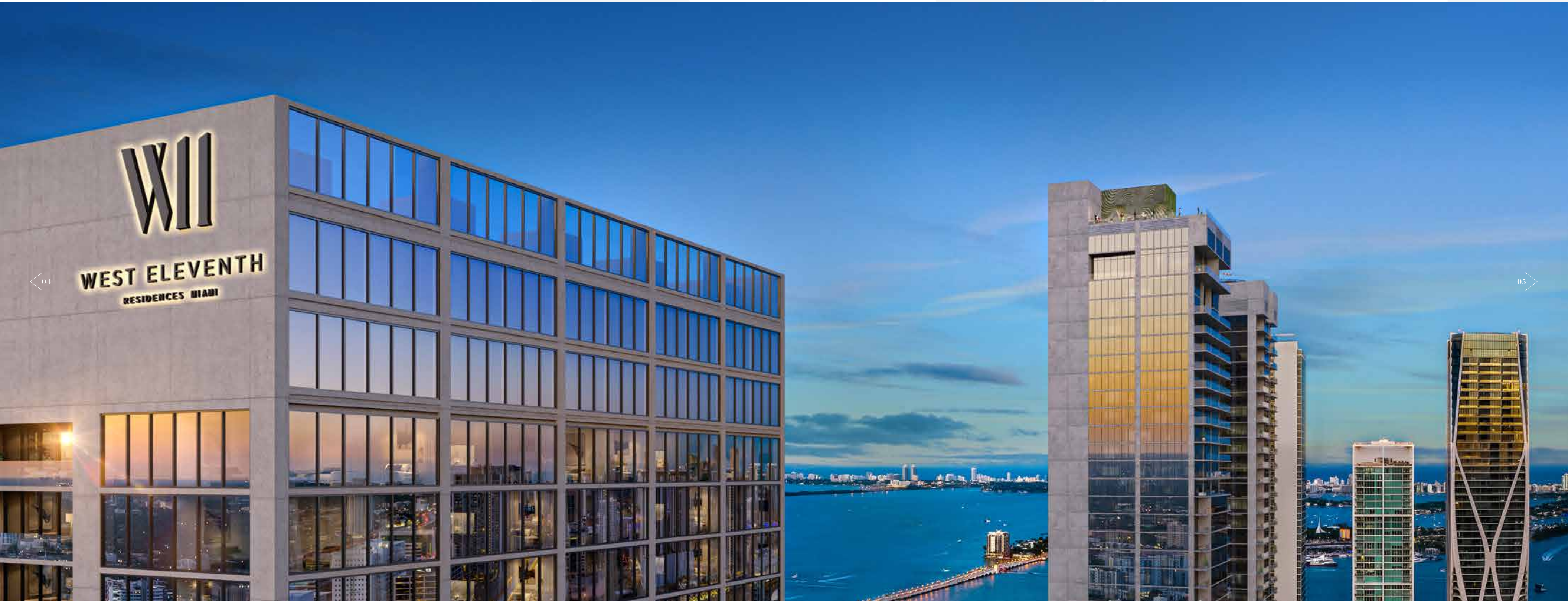
With fully centralized management, the property has been specifically optimized for effortless hosting on Airbnb, giving owners living flexibility while providing peace of mind. Our expertly trained concierge will assist you in creating your personalized listing, from providing professional photography of the building to helping you craft the perfect description.

West Eleventh not only offers owners a fully furnished luxury home, but the option to seamlessly host on Airbnb.

*Hosting is subject to rules and local laws. The ability to host 365 days a year is subject to the City of Miami's (the "City") Determination No. 2019-01 (the "Determination"). Any change in the Determination or the City's interpretation of the Determination may cause the ability to host 365 days a year to be limited and/or restricted as mandated by the City.*

## West Eleventh Residences

This 44-story luxury tower, was designed by internationally renowned architecture firm Sieger Suarez Architects and infused with artistic attention throughout. From the high design lobby and state-of-the-art fitness and wellness center to the 20,000 square foot amenity level with a resort style pool and private lounges.



04

05

ARTIST CONCEPTUAL RENDERING





# YOUR CENTER

## District 11

Your home should feel like the center of the world. Located in Miami's bustling District 11, The West Eleventh Residences have breathtaking views of the Miami skyline, Biscayne Bay and the Atlantic Ocean. This towering building exudes an "on top of the world" feeling while still providing a welcoming home-like undertone within each residence. Choose a day of relaxation and let the spa focused amenities lead you, indulge in an experience of international culinary expertise, or head out and let the night take you on its own adventure. It's all easy to do when everything is only steps from the building - situated at the heart of the city in District 11, considered one of Miami's newest and most coveted entertainment destinations.

# WORLD

# YOUR VIEW



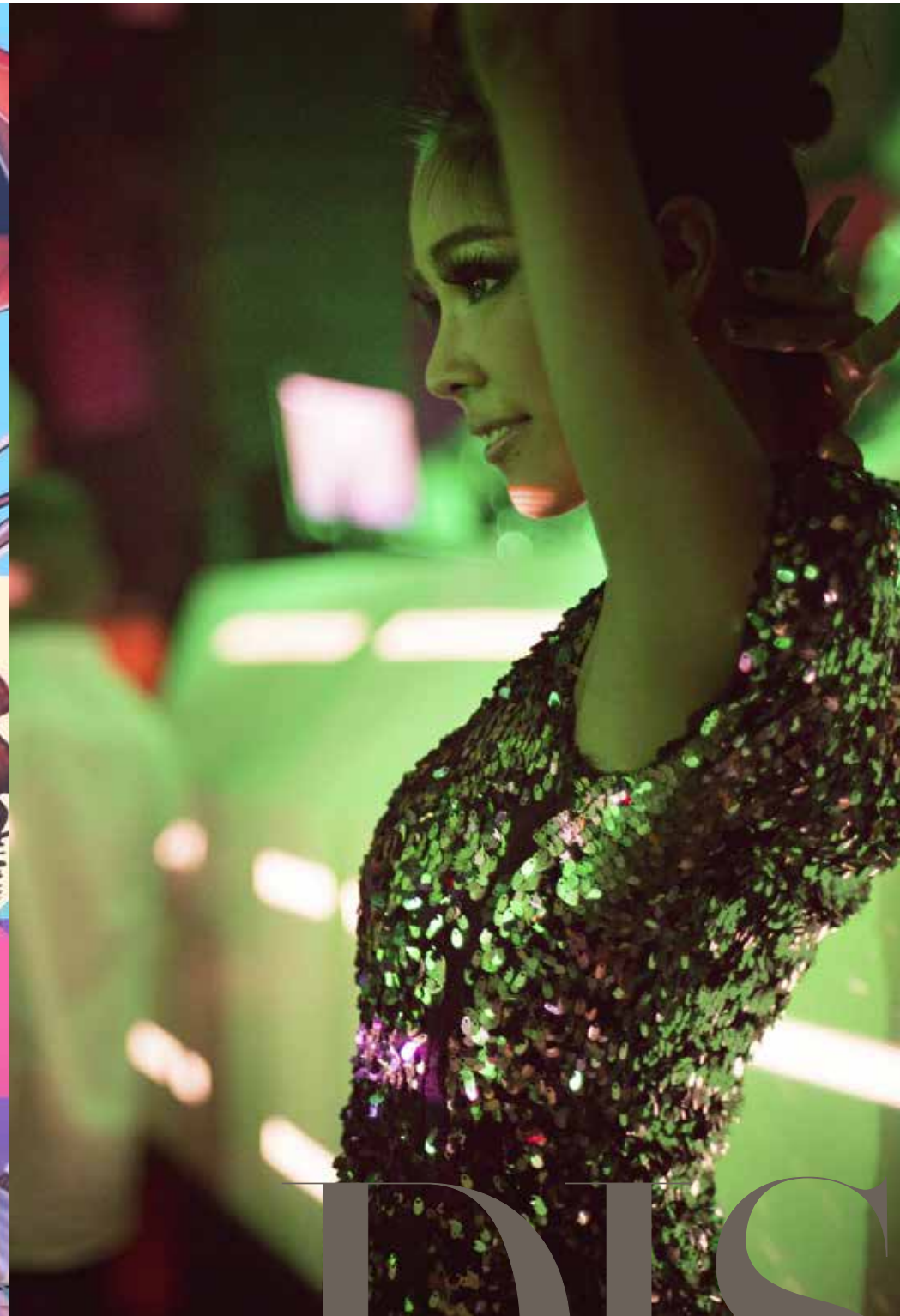
## DISTRICT 11

### Entertainment

Located in the heart of Miami's thriving creative district, a world of art, nightlife, and culture is mere steps away from West Eleventh. Enjoy access to unlimited options for entertainment.

### Shopping / Dining

West Eleventh offers proximity to the best of everything, only minutes away. Shopping options range from flagship global brands to local favorites. Nearby world-class dining includes food and beverage concepts by Michelin-Star chefs.



# DISTRICT 11



## In the Center of it All

Other nearby attractions include:

1. E11EVEN® Hotel & Residences
2. E11EVEN® Residences Miami Beyond
3. Miami Worldcenter  
Featuring 300,000 SF of retail, food and beverage, and entertainment space.
  - Maple & Ash
  - El Vecino
  - Bowlero
  - ETTA
  - Brasserie Laurel
  - SEPHORA
  - Lucid Motors
  - Posman Books
  - Savage X Fenty
  - Lululemon
  - Ray-Ban
  - Club Studio
  - Earl's Kitchen & Bar
4. Adrienne Arsht Center for the Performing Arts
5. Pérez Art Museum Miami (PAMM)
6. Phillip & Patricia Frost Museum of Science
7. Museum Park
8. Miami-Dade Arena
9. Freedom Tower at Miami Dade College
10. Port Miami
11. Bayside Marketplace
12. Miami Dade College - Wolfson Campus
13. Bayfront Park
14. Olympia Theater
15. MiamiCentral Station
16. Waldorf Astoria Residences Miami





# LIFE IN MOTION

Modern life is in perpetual motion. We're always on the move. The residences at West Eleventh were created with that notion in mind. An ownership experience with true living flexibility.

A

NEW

Take living to a new direction never before imagined. West Eleventh takes every detail into account and every convenience is considered to offer residents a tailored and unique experience.

### BUILDING FEATURES

- 44-story tower located in Miami's District 11
- Designed by internationally renowned architecture firm Sieger Suarez Architects
- 659 luxury residences
- Fully centralized management of the property and services for hosting on Airbnb
- Views of the Miami skyline, Biscayne Bay and Atlantic Ocean
- 30,000 SF Tri-Level Experiential Entertainment Venue
- Vibrant amenity level featuring a resort style pool with private lounge areas
- Signature Supper Club Restaurant
- State-of-the-art fitness and wellness center
- Co-working space
- Modern and high design residential lobby space
- Features the latest "smart building" technology

DIRECTION



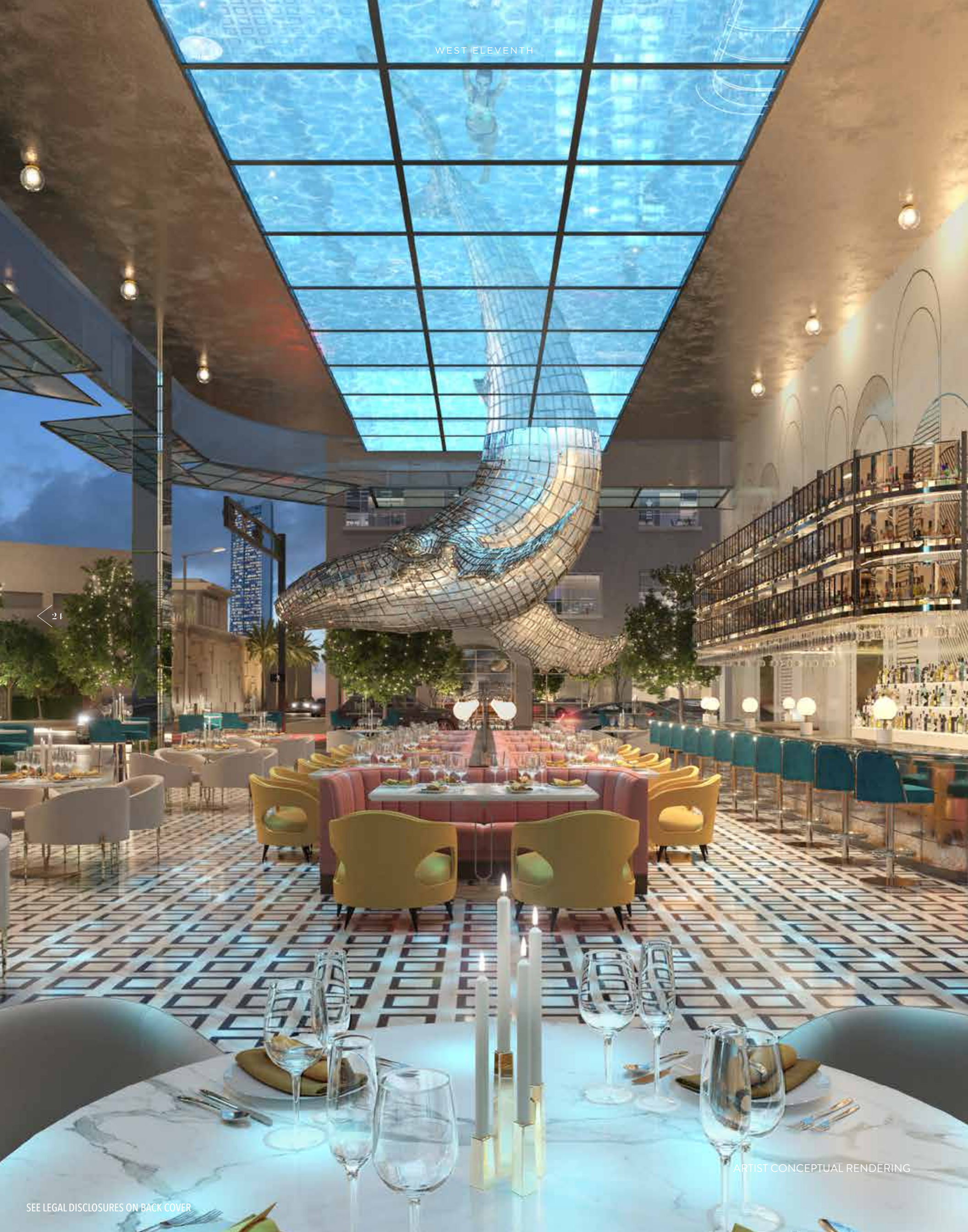
ARTIST CONCEPTUAL RENDERING

## West Eleventh Residences

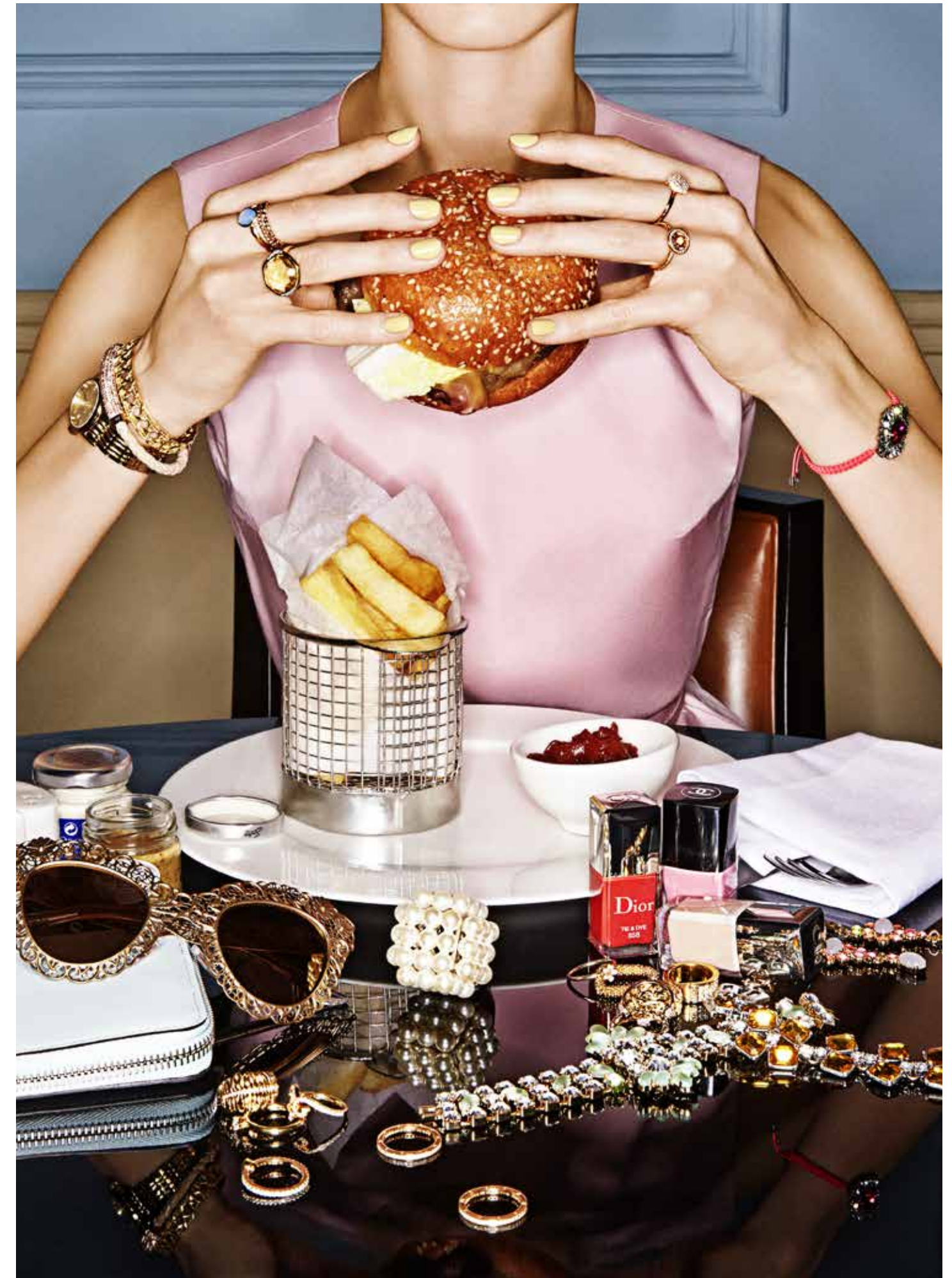
Every convenience was considered and is at your fingertips such as smart building tech to the endless indulgences available in the tri-level experiential entertainment and culinary hall. All of this, anchored by a street presence that naturally emanates the energy of the building's exciting surrounding neighborhood.

# WEST ELEVENTH RESIDENCES MIAMI

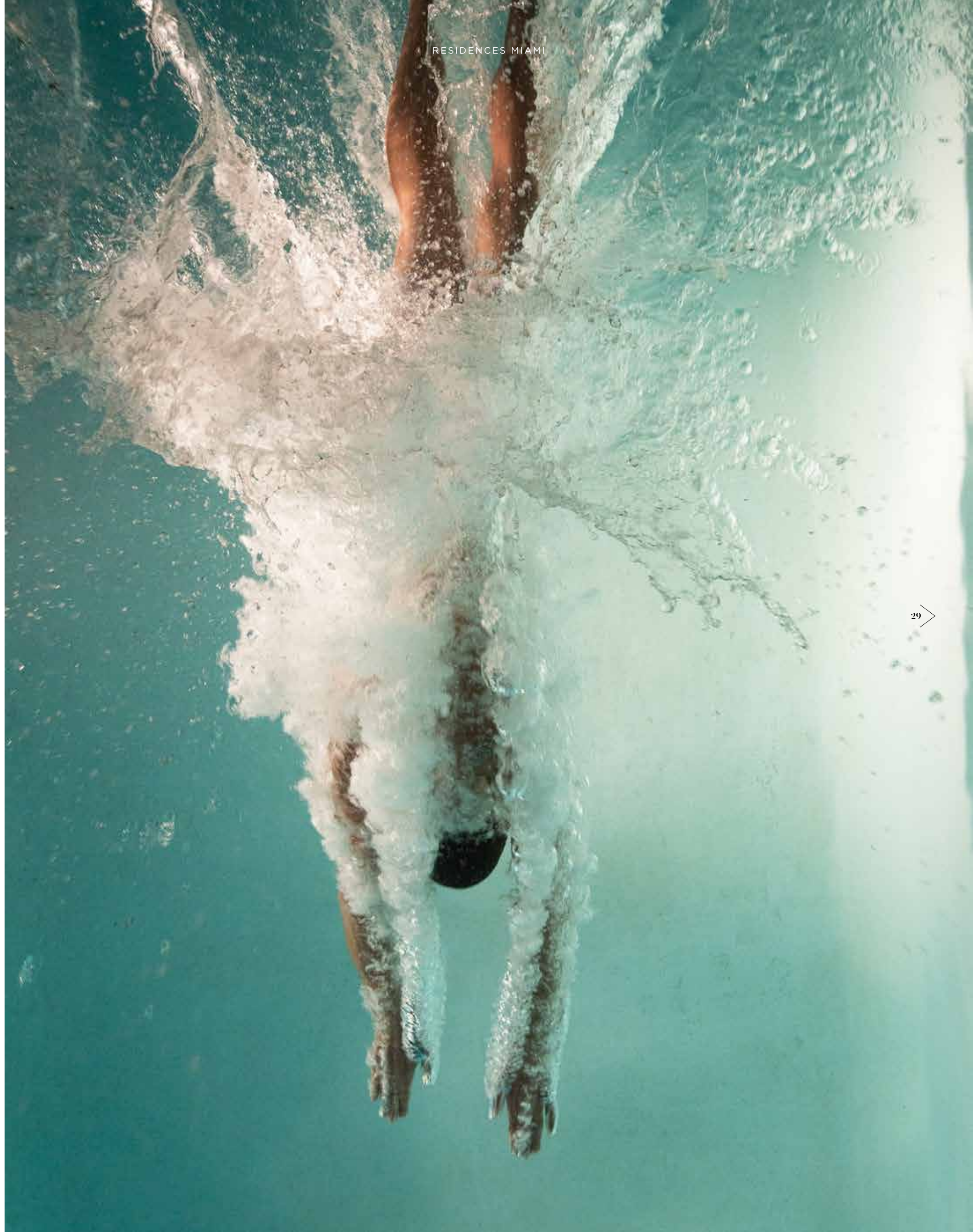
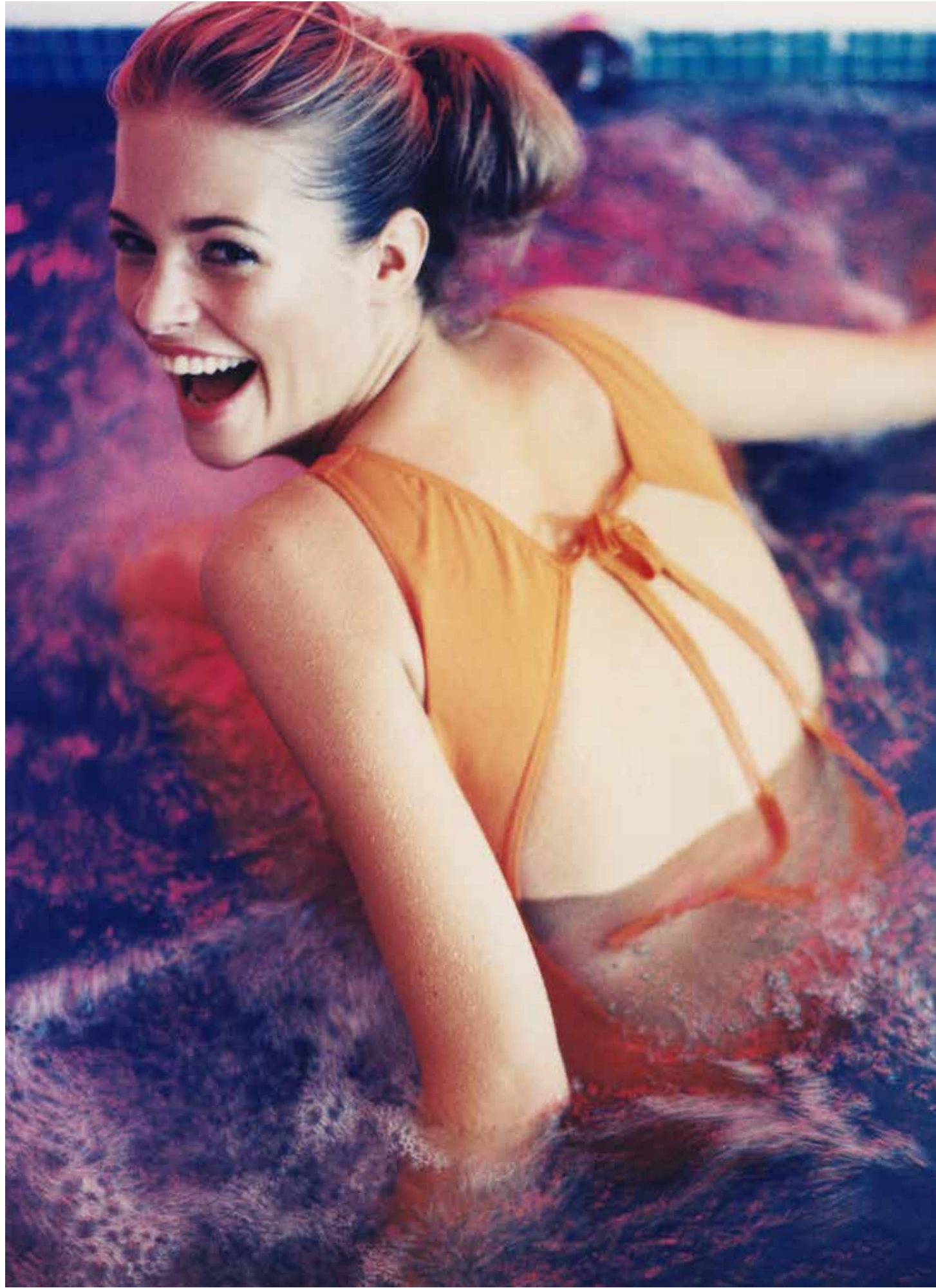




ARTIST CONCEPTUAL RENDERING













Each fully finished and furnished studio and 1-bedroom residence has been thoughtfully curated. Move with seamless efficiency through the fully-integrated, custom kitchens. Customize the ambiance with the ‘touch of a button” using PMG’s smart home technology. Make getting ready a complete art of its own as you move between your built-out closets in the primary bedroom to the pristinely appointed, immaculately designed bathroom with custom imported cabinetry and glass-enclosed showers. Top of the line is only the beginning in these quarters of complete and total comfort, where any detail and customization is in your hands.

## RESIDENCE FEATURES

- Fully furnished and finished residences
- Fully built-out closets in the primary bedrooms featuring all shelving and drawers pre-installed for absolute convenience
- Custom shades
- Built in top-of-the-line washer and dryer
- Unprecedented efficiency through a PMG smart home technology experience for seamless personalization with the touch of a button. Includes integrated audio, video and lighting systems
- All residences come equipped with a contemporary lighting package, including recessed lighting, dimmers, and lighting control
- Pre-wired for high-speed communications, multiple telephone lines, and cable
- French balconies in select residences

# REFLECTION OF YOU





# SAVOR

## KITCHEN & BATHS

- Fully-integrated kitchens with custom countertops, backsplashes and a contemporary under-mount sink
- Top-of-the-line appliance package includes microwave, dishwasher, built-in convection oven and refrigerator
- Imported and custom kitchen and bathroom cabinetry by Italkraft
- WaterWorks bathroom fixtures, features & accessories
- Custom bathroom countertops and finished floors and walls in wet areas
- Glass-enclosed showers



# EVERY MOMENT



< 10



ARTIST CONCEPTUAL RENDERING

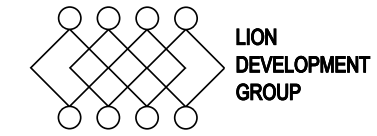


**DEVELOPER**

Founded in 1991 by Kevin Maloney, Property Markets Group (PMG) has evolved from a local real estate operator based in New York City to a national investment, development and asset management firm focused on exceptional for-sale condominiums and large-scale multifamily residential product, as well as select high-performing commercial holdings.

Today PMG is run by Managing Partners Ryan Shear and Dan Kaplan, currently operating projects across Florida, New York, Colorado, Arizona, Tennessee, and Georgia. Their vertically integrated team has departments specializing in acquisitions and land use, design and architecture, construction management, capital markets, asset management, sales and marketing, as well as significant in-house legal and accounting capabilities.

PMG's current multi-billion dollar nationwide portfolio includes assets across pre-development, construction, lease-up, and sell out, totaling more than 8,500 residential units and over 16 million square feet of development. Ground up rental projects under PMG's rapidly expanding Society Living brand platform include locations in Denver, Nashville, Atlanta, Brooklyn, Fort Lauderdale and Miami. Additionally, PMG is growing its Affordable Housing division nationally.



**DEVELOPER**

Lion Development Group was founded by business leaders and brothers Michael Simkins and Ron Simkins. The company specializes in world-class development and redevelopment projects in urban settings and emerging neighborhoods focused on the intersection of technology, culture, and the arts. Since launching the firm in 2009, the firm has successfully developed some of Miami's most notable destinations. As a champion of placemaking and revitalizing Miami neighborhoods, Lion Development Group is continuing to add to its track record of excellence in urban regeneration through projects that create global, connected live-work-play ecosystems for innovation and entrepreneurship that complement and enhance the local communities and strengthen Miami's positioning as a world-class city.



**DEVELOPER**

Led by CEO Marc Roberts, who began his entrepreneurial career as the youngest person to promote a professional boxing match and first person to take a sports management company public on the National NASDAQ, Marc Roberts Companies is a real estate-focused investment firm with a diverse portfolio and upward of \$2 billion in investments. The firm has been assembling prime residential and commercial properties throughout Miami for over 20 years, and is a founding partner of Miami Worldcenter, the largest mixed use project currently in development in the United States. Now focused on Miami's District 11 and the adjacent Park West District of Miami, the Company holds over 10 acres of prime real estate that it is beginning to develop with PMG and Michael Simkins. Currently, Mr. Roberts, working with PMG and Michael Simkins, has achieved over \$1 billion in luxury condominium sales at successful pre-construction developments located within District 11.





# WEST ELEVENTH

THE RESIDENCES

[WestEleventhResidences.com](http://WestEleventhResidences.com)

**ORAL REPRESENTATIONS CANNOT BE RELIED UPON AS CORRECTLY STATING THE REPRESENTATIONS OF THE DEVELOPER. FOR CORRECT REPRESENTATIONS, MAKE REFERENCE TO THIS BROCHURE AND TO THE DOCUMENTS REQUIRED BY SECTION 718.503, FLORIDA STATUTES, TO BE FURNISHED BY A DEVELOPER TO A BUYER OR LESSEE.**

THIS PROJECT IS BEING DEVELOPED BY BLOCK 17 TRUSTEE, LLC (THE "DEVELOPER" OR THE "SPONSOR"), WHICH HAS A LIMITED RIGHT TO USE THE NAME AND LOGO OF BLOCK 17 RESIDENTIAL OWNER, LLC. ANY AND ALL STATEMENTS, DISCLOSURES AND/OR REPRESENTATIONS SHALL BE DEEMED MADE BY THE DEVELOPER AND NOT BY BLOCK 17 RESIDENTIAL OWNER, LLC. YOU AGREE TO LOOK SOLELY TO THE DEVELOPER (AND NOT TO BLOCK 17 RESIDENTIAL OWNER, LLC OR TO ANY OTHER DEVELOPER PARTY (AS DEFINED BELOW) OTHER THAN THE DEVELOPER WITH RESPECT TO ANY AND ALL MATTERS RELATING TO THE SALES AND MARKETING AND/OR DEVELOPMENT OF THE PROJECT. THE DEVELOPER MAY REVISE THESE TERMS AT ANY TIME BY UPDATING THIS POSTING.

NO FEDERAL AGENCY HAS JUDGED THE MERITS OR VALUE, IF ANY, OF THIS PROPERTY. THIS IS NOT AN OFFER TO SELL, OR SOLICITATION OF OFFERS TO BUY, THE CONDOMINIUM UNITS IN STATES WHERE SUCH OFFER OR SOLICITATION CANNOT BE MADE. THESE DRAWINGS ARE CONCEPTUAL ONLY AND ARE FOR THE CONVENIENCE OF REFERENCE. THEY SHOULD NOT BE RELIED UPON AS REPRESENTATIONS, EXPRESS OR IMPLIED, OF THE FINAL DETAIL OF THE RESIDENCES. UNITS SHOWN ARE EXAMPLES OF UNIT TYPES AND MAY NOT DEPICT ACTUAL UNITS. STATED SQUARE FOOTAGES ARE RANGES FOR A PARTICULAR UNIT TYPE AND ARE MEASURED TO THE EXTERIOR BOUNDARIES OF THE EXTERIOR WALLS AND THE CENTERLINE OF INTERIOR DEMISING WALLS AND IN FACT ARE LARGER THAN THE AREA THAT WOULD BE DETERMINED BY USING THE DESCRIPTION AND DEFINITION OF THE "UNIT" SET FORTH IN THE DECLARATION OF CONDOMINIUM (WHICH GENERALLY ONLY INCLUDES THE INTERIOR AIR-SPACE BETWEEN THE PERIMETER WALLS AND EXCLUDES INTERIOR STRUCTURAL COMPONENTS). THE AREA OF THE UNIT AS DEFINED IN THE DECLARATION IS LESS THAN THE SQUARE FOOTAGE REFLECTED HERE. ALL DEPICTIONS OF APPLIANCES, PLUMBING FIXTURES, EQUIPMENT, COUNTERS, SOFFITS, FLOOR COVERINGS AND OTHER MATTERS OF DETAIL ARE CONCEPTUAL ONLY AND ARE NOT NECESSARILY INCLUDED IN EACH UNIT. THE FURNISHINGS AND DÉCOR ILLUSTRATED OR DEPICTED ARE NOT INCLUDED WITH THE PURCHASE OF THE UNIT. CONSULT YOUR PURCHASE AGREEMENT AND ANY ADDENDA THERETO FOR THE ITEMS INCLUDED WITH THE UNIT. DIMENSIONS AND SQUARE FOOTAGE ARE APPROXIMATE, WILL VARY WITH SPECIFIC UNIT TYPE AND MAY VARY WITH ACTUAL CONSTRUCTION. ADDITIONALLY, MEASUREMENTS OF ROOMS SET FORTH ON ANY FLOOR PLAN ARE NOMINAL AND GENERALLY TAKEN AT THE GREATEST POINTS OF EACH GIVEN ROOM (AS IF THE ROOM WERE A PERFECT RECTANGLE), WITHOUT REGARD FOR ANY CUTOUTS. UNIT ORIENTATION AND WINDOWS (INCLUDING NUMBER, SIZE, ORIENTATION AND AWNINGS), BALCONY/LANAI (INCLUDING CONFIGURATION, SIZE AND RAILING/BALUSTRADE), STRUCTURE AND MECHANICAL CHASES MAY VARY. THE DEVELOPER EXPRESSLY RESERVES THE RIGHT TO MAKE MODIFICATIONS, REVISIONS AND CHANGES IT DEEMS DESIRABLE IN ITS SOLE AND ABSOLUTE DISCRETION AND WITHOUT NOTICE. ALL DRAWINGS ARE CONCEPTUAL RENDERINGS AND THE DEVELOPER EXPRESSLY RESERVES THE RIGHT TO MAKE MODIFICATIONS. ACTUAL VIEWS MAY VARY AND CANNOT BE GUARANTEED. VIEWS SHOWN CANNOT BE RELIED UPON AS THE ACTUAL VIEW FROM ANY PARTICULAR UNIT WITHIN THE CONDOMINIUM. IMPROVEMENTS, LANDSCAPING AND AMENITIES DEPICTED MAY NOT EXIST. PRICES, PLANS, ARCHITECTURAL INTERPRETATIONS AND SPECIFICATIONS ARE SUBJECT TO CHANGE WITHOUT NOTICE. THE INFORMATION PRESENTED WITHIN THIS DOCUMENT IS CONCEPTUAL. THE IMAGES AND FEATURES CONTAINED HEREIN ARE NOT TO BE RELIED UPON OR USED AS A REFERENCE FOR SPECIFICATIONS. THE FOREGOING MATTERS ARE FURTHER ADDRESSED IN THE PURCHASE AGREEMENT AND ANY ADDENDA THERETO AND THE CONDOMINIUM DOCUMENTS.

