



ST REGIS
 MIAMI
 THE RESIDENCES

A

FLOORS 7–18

Future residences located at
 1809 Brickell Avenue
 Miami, Florida 33129



ONE | Sotheby's
 INTERNATIONAL REALTY

ORAL REPRESENTATIONS CANNOT BE RELIED UPON AS CORRECTLY STATING REPRESENTATIONS OF THE DEVELOPER. FOR CORRECT REPRESENTATIONS, MAKE REFERENCE TO THIS BROCHURE AND THE DOCUMENTS REQUIRED BY SECTION 718.503, FLORIDA STATUTES, TO BE FURNISHED BY A DEVELOPER TO A BUYER OR LESSEE.

The St. Regis Residences, Miami is developed by 1809 Brickell Property Owner, LLC ("Developer"). The St. Regis Residences, Miami is not owned, developed, or sold by Marriott International, Inc. or its affiliates ("Marriott"). The Developer uses the St. Regis marks under a license from Marriott, which has not confirmed the accuracy of any of the statements or representations made about the project by Developer. The Developer is not incorporated in, located in, nor resident of, New York. This is not intended to be an offer to sell, or solicitation of an offer to buy, condominium units in New York or to residents of New York, or of any other jurisdiction were prohibited by law. Sketches, renderings, or photographs depicting lifestyle, amenities, food services, resort services, finishes, designs, materials, furnishings, plans, specifications, or art contained in this brochure are proposed only, and the Developer reserves the right to modify, revise, or withdraw any or all of the same in Developer's sole discretion or without prior notice. Dimensions and square footage are approximate and may vary depending on how measured and based upon actual construction. Also, locations and layouts of windows, doors, closets, plumbing fixtures, and structural and architectural design elements may vary from concept to actual construction. All depictions of appliances, plumbing fixtures, counters, countertops, cabinets, soffits, floor coverings, art and art installations, and other matters of design and décor detail are conceptual and such drawings, images, and depictions shown should not be relied upon as representations, express or implied, of the final detail of the St. Regis Residences or any Unit. There is no guarantee that the any proposed hotel brands, hotel amenities, condominium amenities, artwork, designers, contributing artists, interior designers, fitness facilities, or restaurants will be involved as depicted or at all upon, or following, the completion of the St. Regis Residences. Consult the Prospectus of the Developer to understand this offering, the amenities specific to each tower, the proposed budgets, terms, conditions, specifications, fees, Unit dimensions, site plans, and to learn what is included with purchase and by payment of regular assessments. All prices are subject to change at any time and without notice, and do not include optional features, design packages, furniture packages, or premiums for upgrades to any Unit. The project graphics, renderings, photographs, and text provided herein are copyrighted works owned by 1809 Brickell Property Owner, LLC 2022.

4 BEDROOMS | 5 BATHROOMS | 1 POWDER ROOM
 INTERIOR: 3,712 SF | 344.9 SQM EXTERIOR: 941 SF | 87.4 SQM



ST REGIS
MIAMI
THE RESIDENCES

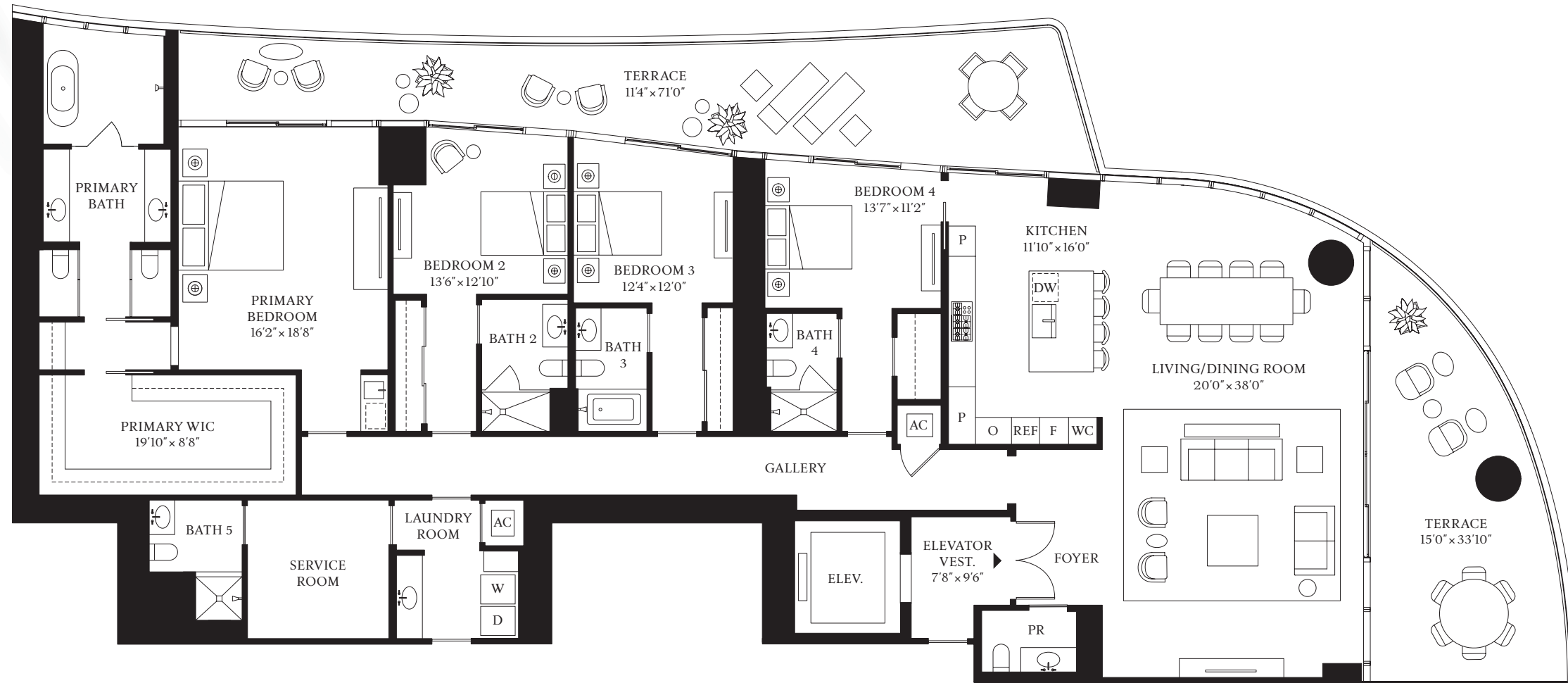
RESIDENCE

A

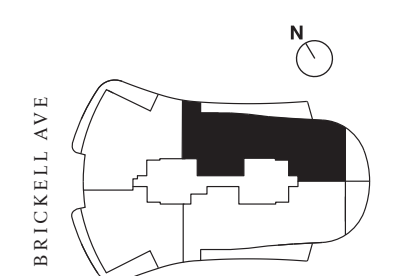
FLOORS 7-18

4 BEDROOMS
5 BATHROOMS
1 POWDER ROOM

INTERIOR
3,712 SF | 344.9 SQM
EXTERIOR
941 SF | 87.4 SQM



BISCAYNE BAY



BRICKELL AVE

The dimensions stated for this unit floor plan are approximate because there are various recognized methods for calculating the square footage of a unit. The square footage stated here is calculated from the exterior boundaries of the exterior walls to the centerline of interior demising walls without deductions for cutouts, curves, or architectural features. This method typically results in quoted dimensions greater than the dimensions that would be determined by using other accepted methods. The definition of "Unit" and the calculation method to be relied upon is set forth by the Developer in Developer's prospectus and the method set forth in the Developer's prospectus may result in a square footage calculation less than the method used here. Dimensions and unit configuration may change during construction. Consult the Developer's prospectus to understand what is offered with purchase, the calculation of the Unit square footage and dimensions. Prices are not based on the square footage no matter the method of calculation of unit dimensions and all prices are subject to change at any time. The project graphics, renderings, photographs, and text provided herein are copyrighted works owned by 1809 Brickell Property Owner, LLC 2022.



ST REGIS
 MIAMI
 THE RESIDENCES

A

FLOORS 21–30, 33–41

Future residences located at
 1809 Brickell Avenue
 Miami, Florida 33129



ORAL REPRESENTATIONS CANNOT BE RELIED UPON AS CORRECTLY STATING REPRESENTATIONS OF THE DEVELOPER. FOR CORRECT REPRESENTATIONS, MAKE REFERENCE TO THIS BROCHURE AND THE DOCUMENTS REQUIRED BY SECTION 718.503, FLORIDA STATUTES, TO BE FURNISHED BY A DEVELOPER TO A BUYER OR LESSEE.

The St. Regis Residences, Miami is developed by 1809 Brickell Property Owner, LLC ("Developer"). The St. Regis Residences, Miami is not owned, developed, or sold by Marriott International, Inc. or its affiliates ("Marriott"). The Developer uses the St. Regis marks under a license from Marriott, which has not confirmed the accuracy of any of the statements or representations made about the project by Developer. The Developer is not incorporated in, located in, nor resident of, New York. This is not intended to be an offer to sell, or solicitation of an offer to buy, condominium units in New York or to residents of New York, or of any other jurisdiction where prohibited by law. Sketches, renderings, or photographs depicting lifestyle, amenities, food services, resort services, finishes, designs, materials, furnishings, plans, specifications, or art contained in this brochure are proposed only, and the Developer reserves the right to modify, revise, or withdraw any or all of the same in Developer's sole discretion or without prior notice. Dimensions and square footage are approximate and may vary depending on how measured and based upon actual construction. Also, locations and layouts of windows, doors, closets, plumbing fixtures, and structural and architectural design elements may vary from concept to actual construction. All depictions of appliances, plumbing fixtures, counters, countertops, cabinets, soffits, floor coverings, art and art installations, and other matters of design and décor detail are conceptual and such drawings, images, and depictions shown should not be relied upon as representations, express or implied, of the final detail of the St. Regis Residences or any Unit. There is no guarantee that the any proposed hotel brands, hotel amenities, condominium amenities, artwork, designers, contributing artists, interior designers, fitness facilities, or restaurants will be involved as depicted or at all upon, or following, the completion of the St. Regis Residences. Consult the Prospectus of the Developer to understand this offering, the amenities specific to each tower, the proposed budgets, terms, conditions, specifications, fees, Unit dimensions, site plans, and to learn what is included with purchase and by payment of regular assessments. All prices are subject to change at any time and without notice, and do not include optional features, design packages, furniture packages, or premiums for upgrades to any Unit. The project graphics, renderings, photographs, and text provided herein are copyrighted works owned by 1809 Brickell Property Owner, LLC 2022.

4 BEDROOMS | 5 BATHROOMS | 1 POWDER ROOM
 INTERIOR: 3,712 SF | 344.9 SQM EXTERIOR: 734 SF | 68.2 SQM



ST REGIS
MIAMI
THE RESIDENCES

RESIDENCE

A

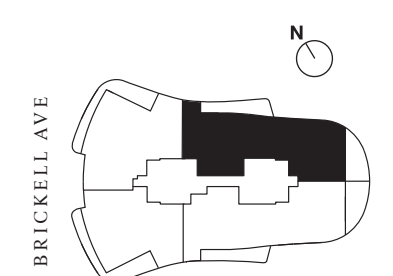
FLOORS 21-30, 33-41

4 BEDROOMS
5 BATHROOMS
1 POWDER ROOM

INTERIOR
3,712 SF | 344.9 SQM
EXTERIOR
734 SF | 68.2 SQM



BISCAYNE BAY



The dimensions stated for this unit floor plan are approximate because there are various recognized methods for calculating the square footage of a unit. The square footage stated here is calculated from the exterior boundaries of the exterior walls to the centerline of interior demising walls without deductions for cutouts, curves, or architectural features. This method typically results in quoted dimensions greater than the dimensions that would be determined by using other accepted methods. The definition of "Unit" and the calculation method to be relied upon is set forth by the Developer in Developer's prospectus and the method set forth in the Developer's prospectus may result in a square footage calculation less than the method used here. Dimensions and unit configuration may change during construction. Consult the Developer's prospectus to understand what is offered with purchase, the calculation of the Unit square footage and dimensions. Prices are not based on the square footage no matter the method of calculation of unit dimensions and all prices are subject to change at any time. The project graphics, renderings, photographs, and text provided herein are copyrighted works owned by 1809 Brickell Property Owner, LLC 2022.



ST REGIS
 MIAMI
 THE RESIDENCES

B

FLOORS 7–18

Future residences located at
 1809 Brickell Avenue
 Miami, Florida 33129



ORAL REPRESENTATIONS CANNOT BE RELIED UPON AS CORRECTLY STATING REPRESENTATIONS OF THE DEVELOPER. FOR CORRECT REPRESENTATIONS, MAKE REFERENCE TO THIS BROCHURE AND THE DOCUMENTS REQUIRED BY SECTION 718.503, FLORIDA STATUTES, TO BE FURNISHED BY A DEVELOPER TO A BUYER OR LESSEE.

The St. Regis Residences, Miami is developed by 1809 Brickell Property Owner, LLC ("Developer"). The St. Regis Residences, Miami is not owned, developed, or sold by Marriott International, Inc. or its affiliates ("Marriott"). The Developer uses the St. Regis marks under a license from Marriott, which has not confirmed the accuracy of any of the statements or representations made about the project by Developer. The Developer is not incorporated in, located in, nor resident of, New York. This is not intended to be an offer to sell, or solicitation of an offer to buy, condominium units in New York or to residents of New York, or of any other jurisdiction were prohibited by law. Sketches, renderings, or photographs depicting lifestyle, amenities, food services, resort services, finishes, designs, materials, furnishings, plans, specifications, or art contained in this brochure are proposed only, and the Developer reserves the right to modify, revise, or withdraw any or all of the same in Developer's sole discretion or without prior notice. Dimensions and square footage are approximate and may vary depending on how measured and based upon actual construction. Also, locations and layouts of windows, doors, closets, plumbing fixtures, and structural and architectural design elements may vary from concept to actual construction. All depictions of appliances, plumbing fixtures, counters, countertops, cabinets, soffits, floor coverings, art and art installations, and other matters of design and décor detail are conceptual and such drawings, images, and depictions shown should not be relied upon as representations, express or implied, of the final detail of the St. Regis Residences or any Unit. There is no guarantee that the any proposed hotel brands, hotel amenities, condominium amenities, artwork, designers, contributing artists, interior designers, fitness facilities, or restaurants will be involved as depicted or at all upon, or following, the completion of the St. Regis Residences. Consult the Prospectus of the Developer to understand this offering, the amenities specific to each tower, the proposed budgets, terms, conditions, specifications, fees, Unit dimensions, site plans, and to learn what is included with purchase and by payment of regular assessments. All prices are subject to change at any time and without notice, and do not include optional features, design packages, furniture packages, or premiums for upgrades to any Unit. The project graphics, renderings, photographs, and text provided herein are copyrighted works owned by 1809 Brickell Property Owner, LLC 2022.

4 BEDROOMS | 5 BATHROOMS | 1 POWDER ROOM
 INTERIOR: 3,679 SF | 341.8 SQM EXTERIOR: 941 SF | 87.4 SQM



ST REGIS
MIAMI
THE RESIDENCES

RESIDENCE

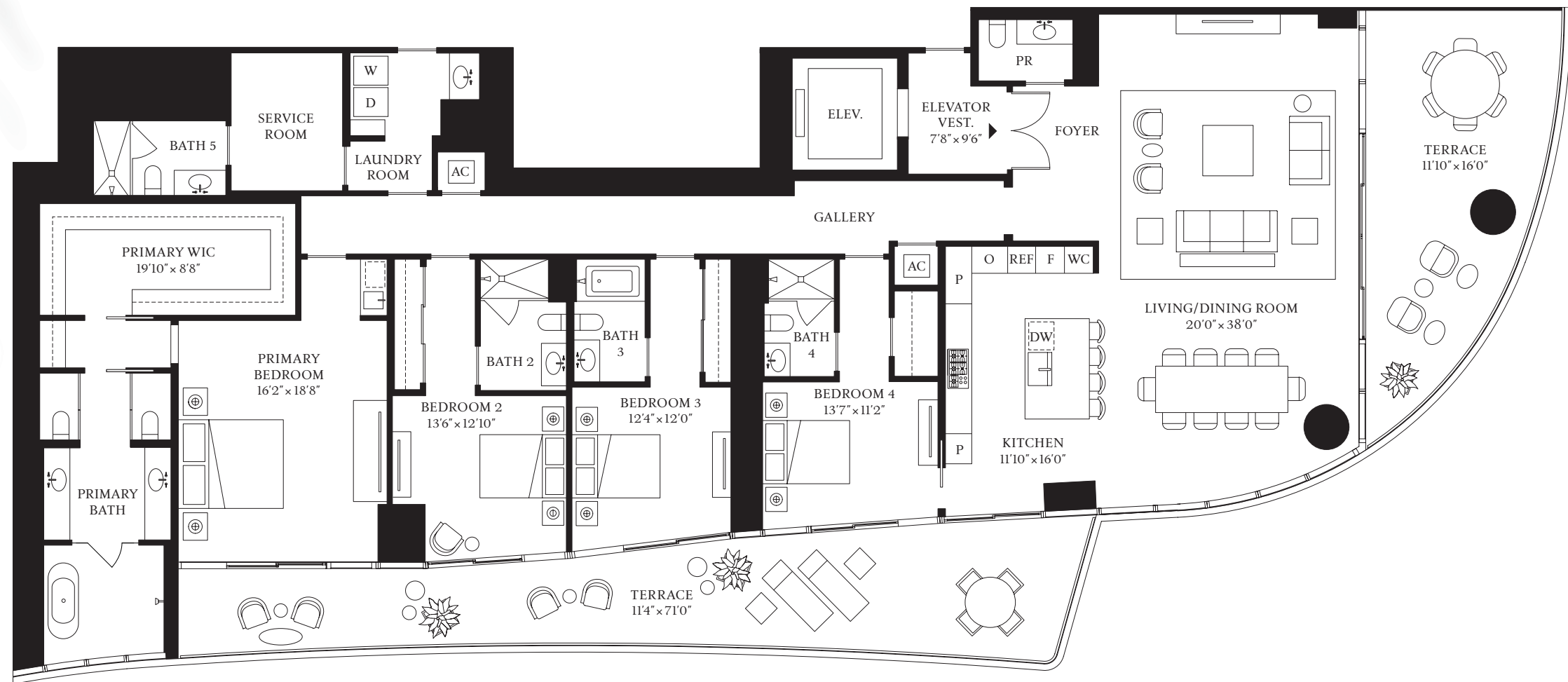
B

FLOORS 7-18

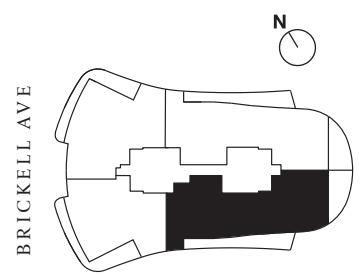
4 BEDROOMS
5 BATHROOMS
1 POWDER ROOM

INTERIOR
3,679 SF | 341.8 SQM

EXTERIOR
941 SF | 87.4 SQM



BISCAYNE BAY



The dimensions stated for this unit floor plan are approximate because there are various recognized methods for calculating the square footage of a unit. The square footage stated here is calculated from the exterior boundaries of the exterior walls to the centerline of interior demising walls without deductions for cutouts, curves, or architectural features. This method typically results in quoted dimensions greater than the dimensions that would be determined by using other accepted methods. The definition of "Unit" and the calculation method to be relied upon is set forth by the Developer in Developer's prospectus and the method set forth in the Developer's prospectus may result in a square footage calculation less than the method used here. Dimensions and unit configuration may change during construction. Consult the Developer's prospectus to understand what is offered with purchase, the calculation of the Unit square footage and dimensions. Prices are not based on the square footage no matter the method of calculation of unit dimensions and all prices are subject to change at any time. The project graphics, renderings, photographs, and text provided herein are copyrighted works owned by 1809 Brickell Property Owner, LLC 2022.



ST REGIS
 MIAMI
 THE RESIDENCES

B

FLOORS 21–30, 33–41

Future residences located at
 1809 Brickell Avenue
 Miami, Florida 33129



ORAL REPRESENTATIONS CANNOT BE RELIED UPON AS CORRECTLY STATING REPRESENTATIONS OF THE DEVELOPER. FOR CORRECT REPRESENTATIONS, MAKE REFERENCE TO THIS BROCHURE AND THE DOCUMENTS REQUIRED BY SECTION 718.503, FLORIDA STATUTES, TO BE FURNISHED BY A DEVELOPER TO A BUYER OR LESSEE.

The St. Regis Residences, Miami is developed by 1809 Brickell Property Owner, LLC ("Developer"). The St. Regis Residences, Miami is not owned, developed, or sold by Marriott International, Inc. or its affiliates ("Marriott"). The Developer uses the St. Regis marks under a license from Marriott, which has not confirmed the accuracy of any of the statements or representations made about the project by Developer. The Developer is not incorporated in, located in, nor resident of, New York. This is not intended to be an offer to sell, or solicitation of an offer to buy, condominium units in New York or to residents of New York, or of any other jurisdiction were prohibited by law. Sketches, renderings, or photographs depicting lifestyle, amenities, food services, resort services, finishes, designs, materials, furnishings, plans, specifications, or art contained in this brochure are proposed only, and the Developer reserves the right to modify, revise, or withdraw any or all of the same in Developer's sole discretion or without prior notice. Dimensions and square footage are approximate and may vary depending on how measured and based upon actual construction. Also, locations and layouts of windows, doors, closets, plumbing fixtures, and structural and architectural design elements may vary from concept to actual construction. All depictions of appliances, plumbing fixtures, counters, countertops, cabinets, soffits, floor coverings, art and art installations, and other matters of design and décor detail are conceptual and such drawings, images, and depictions shown should not be relied upon as representations, express or implied, of the final detail of the St. Regis Residences or any Unit. There is no guarantee that the any proposed hotel brands, hotel amenities, condominium amenities, artwork, designers, contributing artists, interior designers, fitness facilities, or restaurants will be involved as depicted or at all upon, or following, the completion of the St. Regis Residences. Consult the Prospectus of the Developer to understand this offering, the amenities specific to each tower, the proposed budgets, terms, conditions, specifications, fees, Unit dimensions, site plans, and to learn what is included with purchase and by payment of regular assessments. All prices are subject to change at any time and without notice, and do not include optional features, design packages, furniture packages, or premiums for upgrades to any Unit. The project graphics, renderings, photographs, and text provided herein are copyrighted works owned by 1809 Brickell Property Owner, LLC 2022.

4 BEDROOMS | 5 BATHROOMS | 1 POWDER ROOM
 INTERIOR: 3,679 SF | 341.8 SQM EXTERIOR: 734 SF | 68.2 SQM



ST REGIS
MIAMI
THE RESIDENCES

RESIDENCE

B

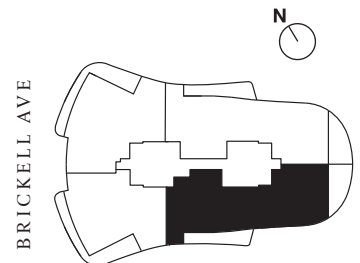
FLOORS 21-30, 33-41

4 BEDROOMS
5 BATHROOMS
1 POWDER ROOM

INTERIOR
3,679 SF | 341.8 SQM
EXTERIOR
734 SF | 68.2 SQM



BISCAYNE BAY



BRICKELL AVE

The dimensions stated for this unit floor plan are approximate because there are various recognized methods for calculating the square footage of a unit. The square footage stated here is calculated from the exterior boundaries of the exterior walls to the centerline of interior demising walls without deductions for cutouts, curves, or architectural features. This method typically results in quoted dimensions greater than the dimensions that would be determined by using other accepted methods. The definition of "Unit" and the calculation method to be relied upon is set forth by the Developer in Developer's prospectus and the method set forth in the Developer's prospectus may result in a square footage calculation less than the method used here. Dimensions and unit configuration may change during construction. Consult the Developer's prospectus to understand what is offered with purchase, the calculation of the Unit square footage and dimensions. Prices are not based on the square footage no matter the method of calculation of unit dimensions and all prices are subject to change at any time. The project graphics, renderings, photographs, and text provided herein are copyrighted works owned by 1809 Brickell Property Owner, LLC 2022.



ST REGIS
 MIAMI
 THE RESIDENCES

C

FLOORS 7–18, 21–30, 33–41

Future residences located at
 1809 Brickell Avenue
 Miami, Florida 33129



ORAL REPRESENTATIONS CANNOT BE RELIED UPON AS CORRECTLY STATING REPRESENTATIONS OF THE DEVELOPER. FOR CORRECT REPRESENTATIONS, MAKE REFERENCE TO THIS BROCHURE AND THE DOCUMENTS REQUIRED BY SECTION 718.503, FLORIDA STATUTES, TO BE FURNISHED BY A DEVELOPER TO A BUYER OR LESSEE.

The St. Regis Residences, Miami is developed by 1809 Brickell Property Owner, LLC ("Developer"). The St. Regis Residences, Miami is not owned, developed, or sold by Marriott International, Inc. or its affiliates ("Marriott"). The Developer uses the St. Regis marks under a license from Marriott, which has not confirmed the accuracy of any of the statements or representations made about the project by Developer. The Developer is not incorporated in, located in, nor resident of, New York. This is not intended to be an offer to sell, or solicitation of an offer to buy, condominium units in New York or to residents of New York, or of any other jurisdiction where prohibited by law. Sketches, renderings, or photographs depicting lifestyle, amenities, food services, resort services, finishes, designs, materials, furnishings, plans, specifications, or art contained in this brochure are proposed only, and the Developer reserves the right to modify, revise, or withdraw any or all of the same in Developer's sole discretion or without prior notice. Dimensions and square footage are approximate and may vary depending on how measured and based upon actual construction. Also, locations and layouts of windows, doors, closets, plumbing fixtures, and structural and architectural design elements may vary from concept to actual construction. All depictions of appliances, plumbing fixtures, counters, countertops, cabinets, soffits, floor coverings, art and art installations, and other matters of design and décor detail are conceptual and such drawings, images, and depictions shown should not be relied upon as representations, express or implied, of the final detail of the St. Regis Residences or any Unit. There is no guarantee that the any proposed hotel brands, hotel amenities, condominium amenities, artwork, designers, contributing artists, interior designers, fitness facilities, or restaurants will be involved as depicted or at all upon, or following, the completion of the St. Regis Residences. Consult the Prospectus of the Developer to understand this offering, the amenities specific to each tower, the proposed budgets, terms, conditions, specifications, fees, Unit dimensions, site plans, and to learn what is included with purchase and by payment of regular assessments. All prices are subject to change at any time and without notice, and do not include optional features, design packages, furniture packages, or premiums for upgrades to any Unit. The project graphics, renderings, photographs, and text provided herein are copyrighted works owned by 1809 Brickell Property Owner, LLC 2022.

3 BEDROOMS | 3 BATHROOMS | 1 POWDER ROOM
 INTERIOR: 2,987 SF | 277.5 SQM EXTERIOR: 590 SF | 54.8 SQM



ST REGIS
MIAMI
THE RESIDENCES

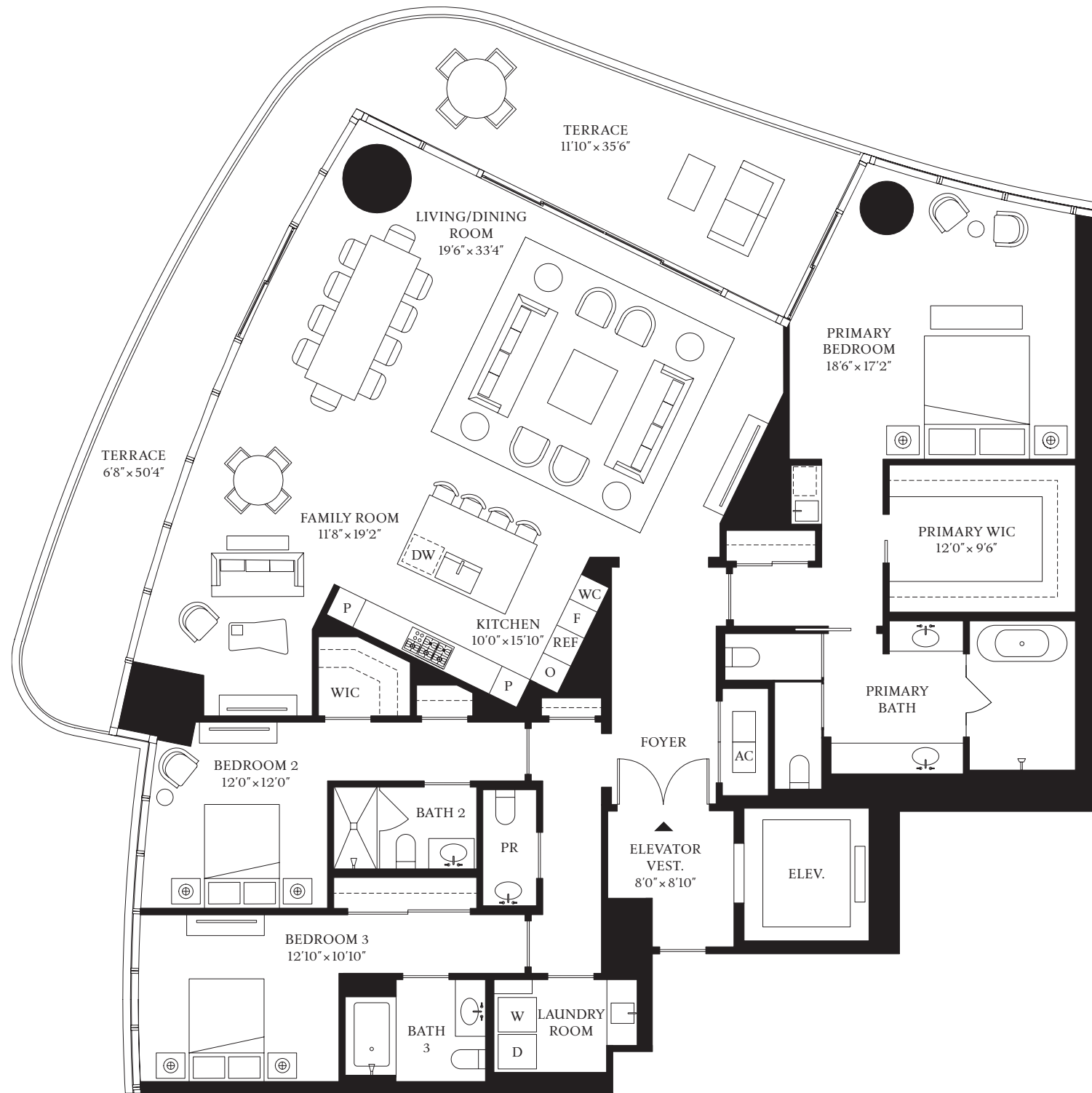
RESIDENCE

C

FLOORS 7-18, 21-30, 33-41

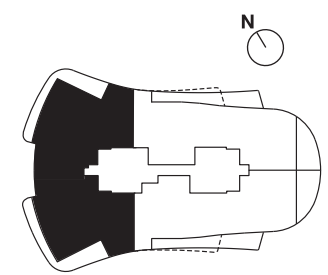
3 BEDROOMS
3 BATHROOMS
1 POWDER ROOM

INTERIOR
2,987 SF | 277.5 SQM
EXTERIOR
590 SF | 54.8 SQM



BISCAYNE BAY

BRICKELL AVE



The dimensions stated for this unit floor plan are approximate because there are various recognized methods for calculating the square footage of a unit. The square footage stated here is calculated from the exterior boundaries of the exterior walls to the centerline of interior demising walls without deductions for cutouts, curves, or architectural features. This method typically results in quoted dimensions greater than the dimensions that would be determined by using other accepted methods. The definition of "Unit" and the calculation method to be relied upon is set forth by the Developer in Developer's prospectus and the method set forth in the Developer's prospectus may result in a square footage calculation less than the method used here. Dimensions and unit configuration may change during construction. Consult the Developer's prospectus to understand what is offered with purchase, the calculation of the Unit square footage and dimensions. Prices are not based on the square footage no matter the method of calculation of unit dimensions and all prices are subject to change at any time. The project graphics, renderings, photographs, and text provided herein are copyrighted works owned by 1809 Brickell Property Owner, LLC 2022.



ST REGIS
 MIAMI
 THE RESIDENCES


D

FLOORS 7–18, 21–30, 33–41

Future residences located at
 1809 Brickell Avenue
 Miami, Florida 33129



ORAL REPRESENTATIONS CANNOT BE RELIED UPON AS CORRECTLY STATING REPRESENTATIONS OF THE DEVELOPER. FOR CORRECT REPRESENTATIONS, MAKE REFERENCE TO THIS BROCHURE AND THE DOCUMENTS REQUIRED BY SECTION 718.503, FLORIDA STATUTES, TO BE FURNISHED BY A DEVELOPER TO A BUYER OR LESSEE.

The St. Regis Residences, Miami is developed by 1809 Brickell Property Owner, LLC ("Developer"). The St. Regis Residences, Miami is not owned, developed, or sold by Marriott International, Inc. or its affiliates ("Marriott"). The Developer uses the St. Regis marks under a license from Marriott, which has not confirmed the accuracy of any of the statements or representations made about the project by Developer. The Developer is not incorporated in, located in, nor resident of, New York. This is not intended to be an offer to sell, or solicitation of an offer to buy, condominium units in New York or to residents of New York, or of any other jurisdiction were prohibited by law. Sketches, renderings, or photographs depicting lifestyle, amenities, food services, resort services, finishes, designs, materials, furnishings, plans, specifications, or art contained in this brochure are proposed only, and the Developer reserves the right to modify, revise, or withdraw any or all of the same in Developer's sole discretion or without prior notice. Dimensions and square footage are approximate and may vary depending on how measured and based upon actual construction. Also, locations and layouts of windows, doors, closets, plumbing fixtures, and structural and architectural design elements may vary from concept to actual construction. All depictions of appliances, plumbing fixtures, counters, countertops, cabinets, soffits, floor coverings, art and art installations, and other matters of design and décor detail are conceptual and such drawings, images, and depictions shown should not be relied upon as representations, express or implied, of the final detail of the St. Regis Residences or any Unit. There is no guarantee that the any proposed hotel brands, hotel amenities, condominium amenities, artwork, designers, contributing artists, interior designers, fitness facilities, or restaurants will be involved as depicted or at all upon, or following, the completion of the St. Regis Residences. Consult the Prospectus of the Developer to understand this offering, the amenities specific to each tower, the proposed budgets, terms, conditions, specifications, fees, Unit dimensions, site plans, and to learn what is included with purchase and by payment of regular assessments. All prices are subject to change at any time and without notice, and do not include optional features, design packages, furniture packages, or premiums for upgrades to any Unit. The project graphics, renderings, photographs, and text provided herein are copyrighted works owned by 1809 Brickell Property Owner, LLC 2022. 

2 BEDROOMS | 3 BATHROOMS | 1 POWDER ROOM
 INTERIOR: 2,616 SF | 243 SQM EXTERIOR: 590 SF | 54.8 SQM



ST REGIS
MIAMI
THE RESIDENCES

RESIDENCE

D

FLOORS 7-18, 21-30, 33-41

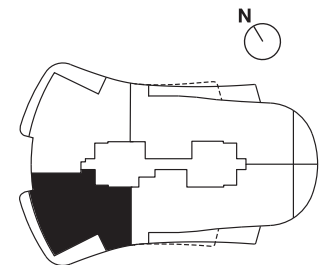
2 BEDROOMS
3 BATHROOMS
1 POWDER ROOM

INTERIOR
2,616 SF | 243 SQM
EXTERIOR
590 SF | 54.8 SQM



BISCAYNE BAY

BRICKELL AVE



The dimensions stated for this unit floor plan are approximate because there are various recognized methods for calculating the square footage of a unit. The square footage stated here is calculated from the exterior boundaries of the exterior walls to the centerline of interior demising walls without deductions for cutouts, curves, or architectural features. This method typically results in quoted dimensions greater than the dimensions that would be determined by using other accepted methods. The definition of "Unit" and the calculation method to be relied upon is set forth by the Developer in Developer's prospectus and the method set forth in the Developer's prospectus may result in a square footage calculation less than the method used here. Dimensions and unit configuration may change during construction. Consult the Developer's prospectus to understand what is offered with purchase, the calculation of the Unit square footage and dimensions. Prices are not based on the square footage no matter the method of calculation of unit dimensions and all prices are subject to change at any time. The project graphics, renderings, photographs, and text provided herein are copyrighted works owned by 1809 Brickell Property Owner, LLC 2022.