

An Elevated Landscape

2000 OCEAN



On a pristine stretch of white sand dunes and sea grapes, an architectural marvel is quietly rising. 2000 Ocean by Enrique Norten – TEN Arquitectos, conceived as a private residential enclave, is highly sophisticated and offers not only an elevated landscape, but an elevated life.

Located just north of South Florida's Golden Beach, this contemporary, 38-story glass tower showcases panoramic views of the Atlantic Ocean, Intracoastal Waterway and surrounding endless sandy beaches. Proudly positioned on the beach, and closer to the ocean than any of its neighbors, it is bathed with sunlight from sunrise to sunset. 64 families will have the privilege to call 2000 Ocean, a property that signifies prestige and quality, their home. Adding beauty and opulence to the Atlantic coastline, there is truly nothing else like it.

An Elevated Life

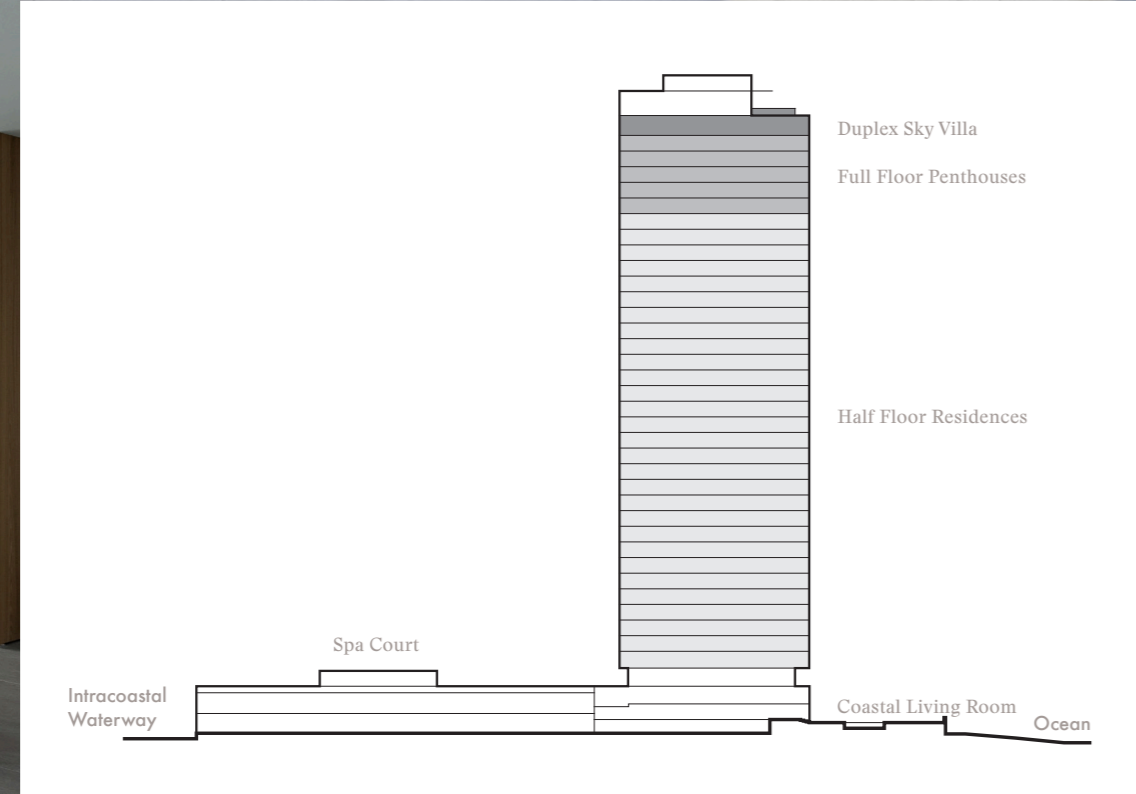
“Architecture is not only about buildings; it’s about creating space.”

Enrique Norten

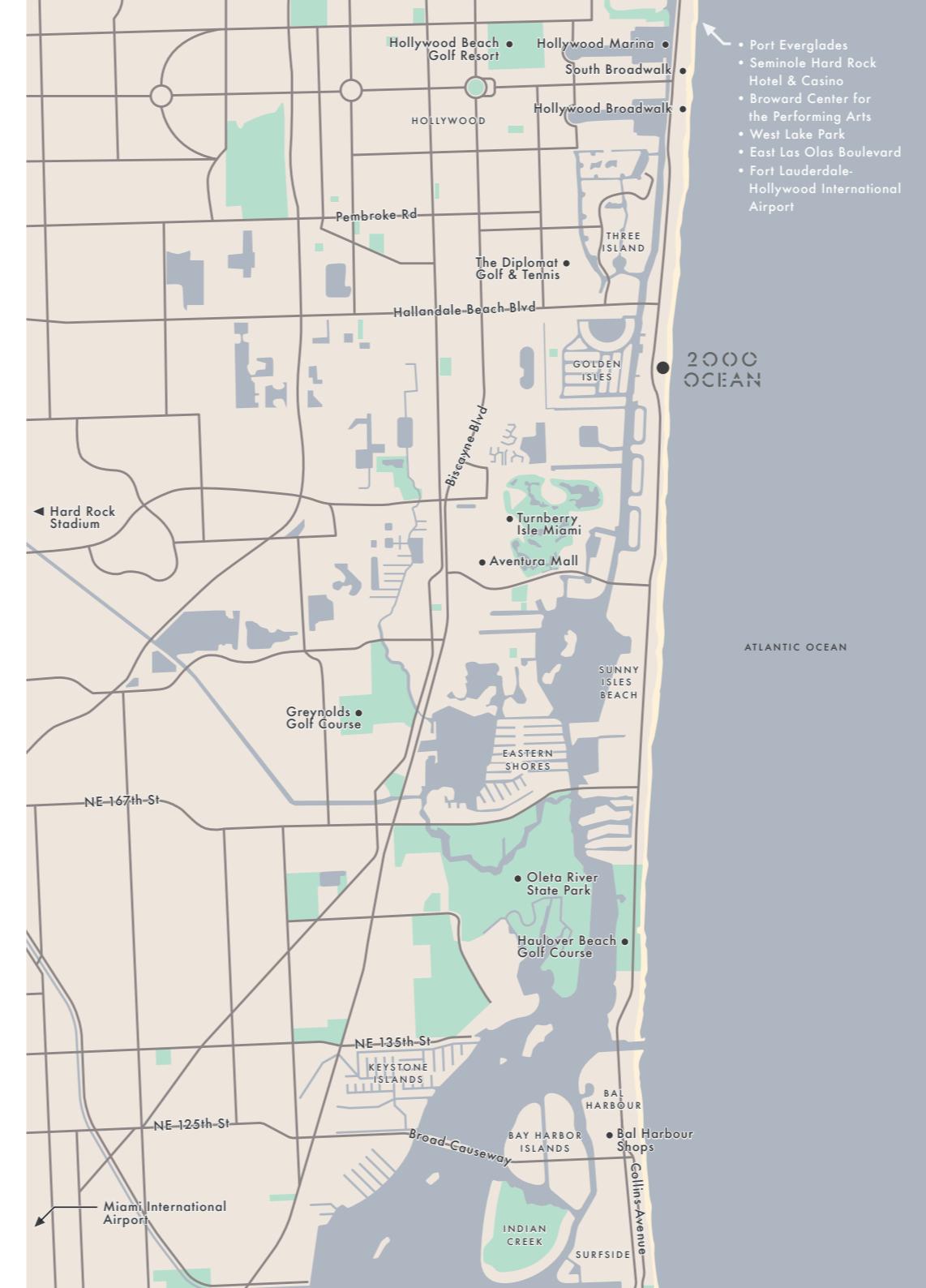


“When does architecture become something really special? When it surprises you, or makes you understand more about yourself. When it gives you a reason to reflect upon your life, or on the world around you.”

Enrique Norten

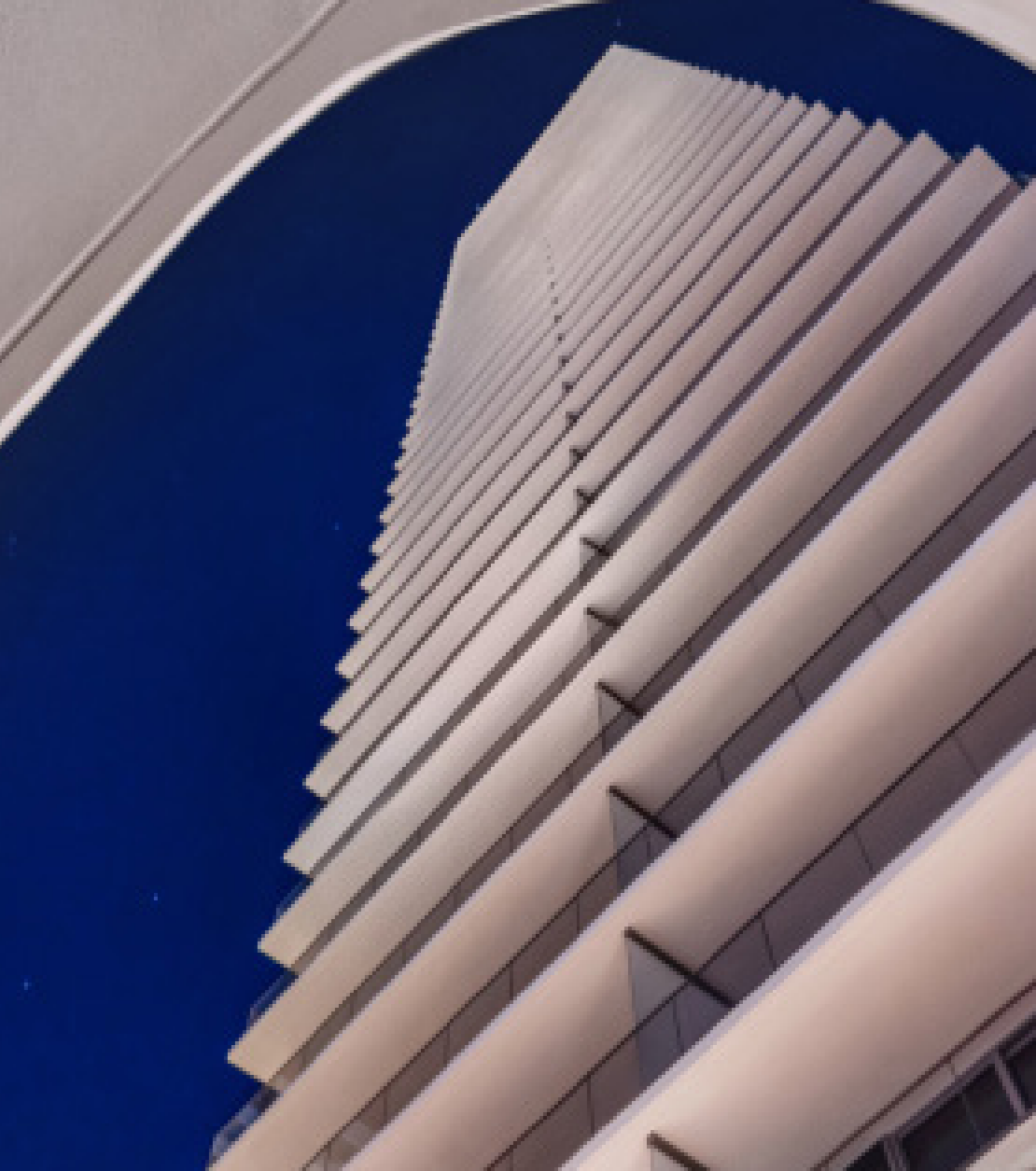


TEN Arquitectos
Despite Enrique Norten’s three-decade career as a leading architect, garnering international renown and countless awards, he presents himself as a craftsman committed wholly to the principles of service. His is a uniquely grounded posture in a field increasingly marked by spectacle and provocation. At 62, Norten simply has no interest in that. Instead, he is guided by community, culture, and integrity—all of which manifests itself in his life’s work. Alongside lead architect and partner, Andrea Steele, Enrique Norten helms the formidable design team behind 2000 Ocean. When Norten founded Taller de Enrique Norten (TEN) Arquitectos, it was an emerging firm in Mexico City, built on a belief that architecture is an inherent responsibility to the communities it serves. Over the course of 30 years, the firm worked to maintain this ethos, embracing Norten’s trademark pragmatism with modernist structures and clear-cut geometries. Today, TEN Arquitectos boasts a portfolio of more than 60 landmark museums, libraries, public parks, residences, hotels, and universities in cities around the globe, each designed to improve urban living. Ever humble, Norten is still searching to contribute to the greater good. In the slow strum of his native Spanish, he asks himself, “When does architecture become something really special? When it surprises you, or makes you understand more about yourself. When it gives you a reason to reflect upon your life, or on the world around you. How does that happen? There are infinite ways...”



- Building Features**
- Boutique property with 64 exquisite oceanfront residences, consisting of half-floor residences, full-floor penthouse residences and an exceptional duplex sky villa with private pool deck; all in a spectacular landscaped beachfront setting
 - Envisioned by Enrique Norten of TEN Arquitectos
 - Interior and exterior amenity spaces exclusively designed and furnished by Minotti
 - Direct beach access with private beach amenities
 - Landscaped sculpture garden with a commissioned piece by David Harber
 - Private arrival and valet entrance
- Services**
- Full-service valet parking
 - 24-hour security
 - Concierge; 24-hour lobby attendant
- Amenities**
- Two swimming pools with expansive sunrise and sunset views:
 - Elevated oceanfront pool overlooking the Atlantic Ocean
 - ‘Sunset Lounge’ pool with lounges and private cabanas overlooking the Intracoastal Waterway and surrounded by lush landscaping
 - Pool Service
 - Poolside cafe
 - Private beach amenities including chaise lounges, beach umbrellas, and beach attendant
 - State-of-the-art fitness center designed by Wright Fit with Life Fitness equipment
 - Freestanding spa pavilion with yoga room, treatment rooms, sauna, and atmospheric shower experience room nestled within the elevated landscape and opening onto the contemplative bamboo garden
 - Curated gardens by renowned landscape architect Sasaki
 - Tranquility garden with reflection pond
- Residences**
- Assouline curated library
 - Oceanview owner’s lounge & function room with theatre and dedicated catering kitchen
 - Sunset Terrace — garden facing private function room
 - Pet Walk
 - Expansive flow through residences, with approximately 10-foot ceilings and private elevator landings, provide seamless indoor/outdoor experience, with extensive Atlantic Ocean and Intracoastal Waterway views through floor-to-ceiling sliding glass walls, opening up to 10-foot deep terraces
 - Half-floor residences provide views of the Atlantic Ocean and Intracoastal Waterway, 3 bedrooms, 3 ½ baths, den and expansive east and west terraces. 2,913 square feet of interior space
 - Full-floor residences provide 360-degree views of the Atlantic Ocean and Intracoastal Waterway, 5 bedrooms, 6 bathrooms, powder room and staff quarters, expansive east and west terraces. 5,832 square feet of interior space
 - Fully finished, furniture-ready residences, with personalized interior design services by Minotti
 - All stone custom **minotticucine** and Boffi kitchens, with fully integrated Gaggenau appliances
 - Unique full stone island with integrated stone sink and custom wood full-height cabinets
 - Soft close drawers with integrated LED lighting
 - Pietra Serena marble, Tuscan white porcelain and Sabiosa grigio porcelain flooring throughout residences
 - Custom full-slab stone master bath floating vanities and mirrors with integrated LED lighting
 - Floating bathtubs with Intracoastal Waterway views in all master baths
 - Dornbracht, Duravit and Blu Bath bathroom fixtures and accessories in all bathrooms
 - Walk-in closets in master bedroom (customized upgrades available) by B&B Italia
 - Residences pre-wired for Smart Home features
 - Lualdi Italian glass doors and cove lighting in every unit

Property Address
2000 South Ocean Drive, Hallandale Beach, FL 33009



KAR PROPERTIES **Minotti** **minotticucine** **TEN ARQUITECTOS** **Boffi**

ORAL REPRESENTATIONS CANNOT BE RELIED UPON AS CORRECTLY STATING THE REPRESENTATIONS OF THE DEVELOPER. FOR CORRECT REPRESENTATIONS, REFERENCE SHOULD BE MADE TO THE DOCUMENTS REQUIRED BY SECTION 718.503, FLORIDA STATUTES, TO BE FURNISHED BY A DEVELOPER TO A BUYER OR LESSEE. This offering is made only by the Prospectus for the Condominium and no statement should be relied upon if not made in the Prospectus. This is not intended to be an offer to sell nor a solicitation of offers to buy in any jurisdiction where prohibited by law, and your eligibility for purchase will depend upon your state of residency. APPLICABLE TO NEW YORK RESIDENTS: This advertisement is not an offering. It is a solicitation of interest in the advertised property. No offering of the advertised units can be made and no deposits can be accepted, or reservations, binding or non-binding, can be made until an offering plan is filed with the New York State Department of Law. This advertisement is made pursuant to Cooperative Policy Statement No. 1, issued by the New York State Department of Law, CP16-0047, Sponsor: 2000 Ocean Drive LLC, 2000 South Ocean Drive, Hallandale Beach, Florida 33039. Stated square footages and dimensions are measured to the exterior boundaries of the exterior walls and the centerline of interior dividing walls and in fact vary from the square footage and dimensions that would be determined by using the description and definition of the “Unit” set forth in the Declaration. The specifications, terms, conditions, services, finishes and statements referenced herein are proposed only, and the Developer reserves the right to modify, revise or withdraw any or all of same in its sole discretion and without prior notice. Equal Housing Opportunity.