



# THE VILLAGE

AT CORAL GABLES

MALAGA AVENUE

TOWNHOUSES

SEGOVIA STREET

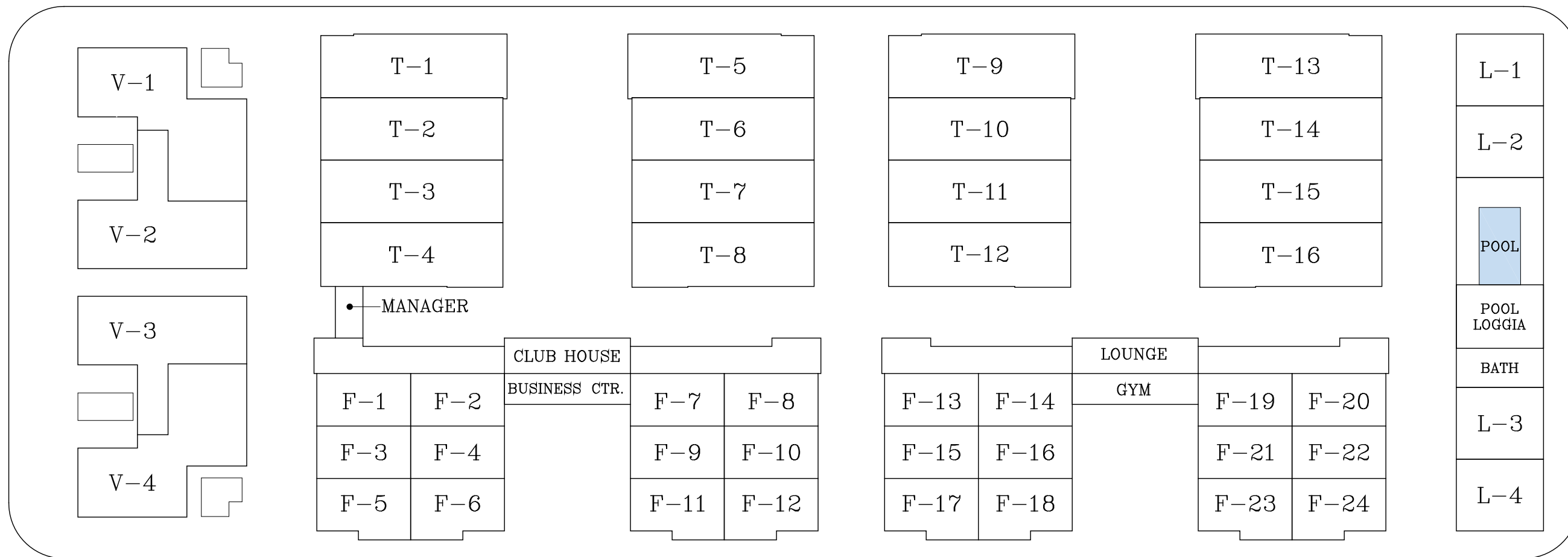
VILLAS

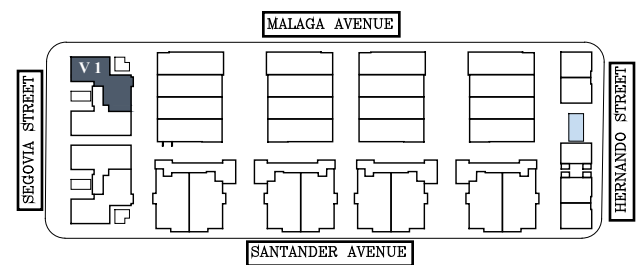
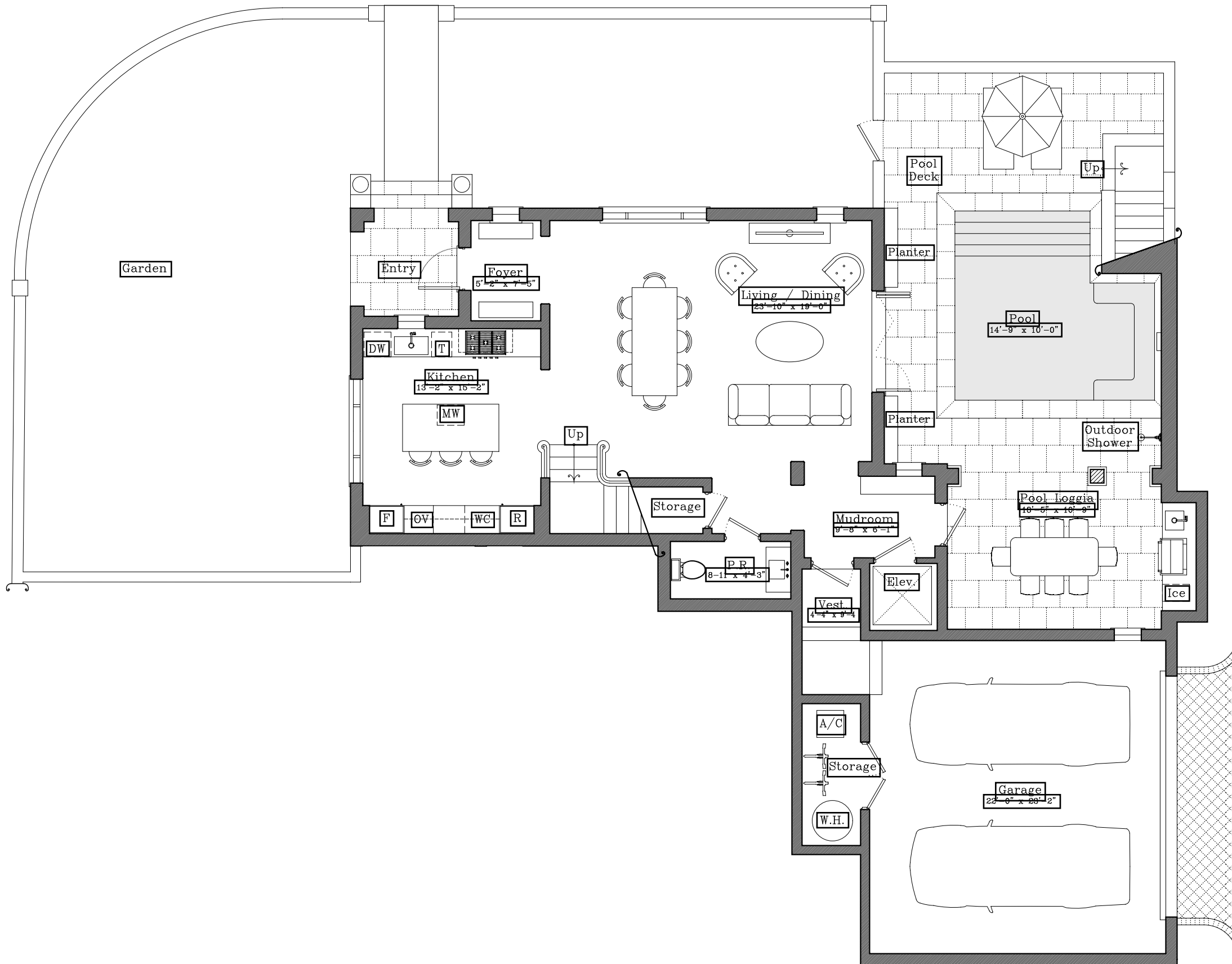
HERNANDO STREET

LOFTS

SANTANDER AVENUE

FLATS

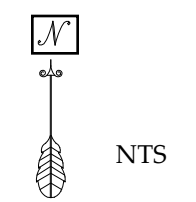




**V1**  
First Floor

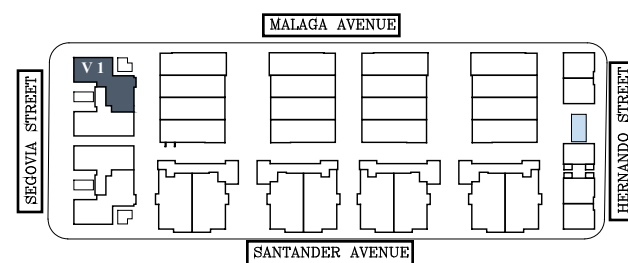
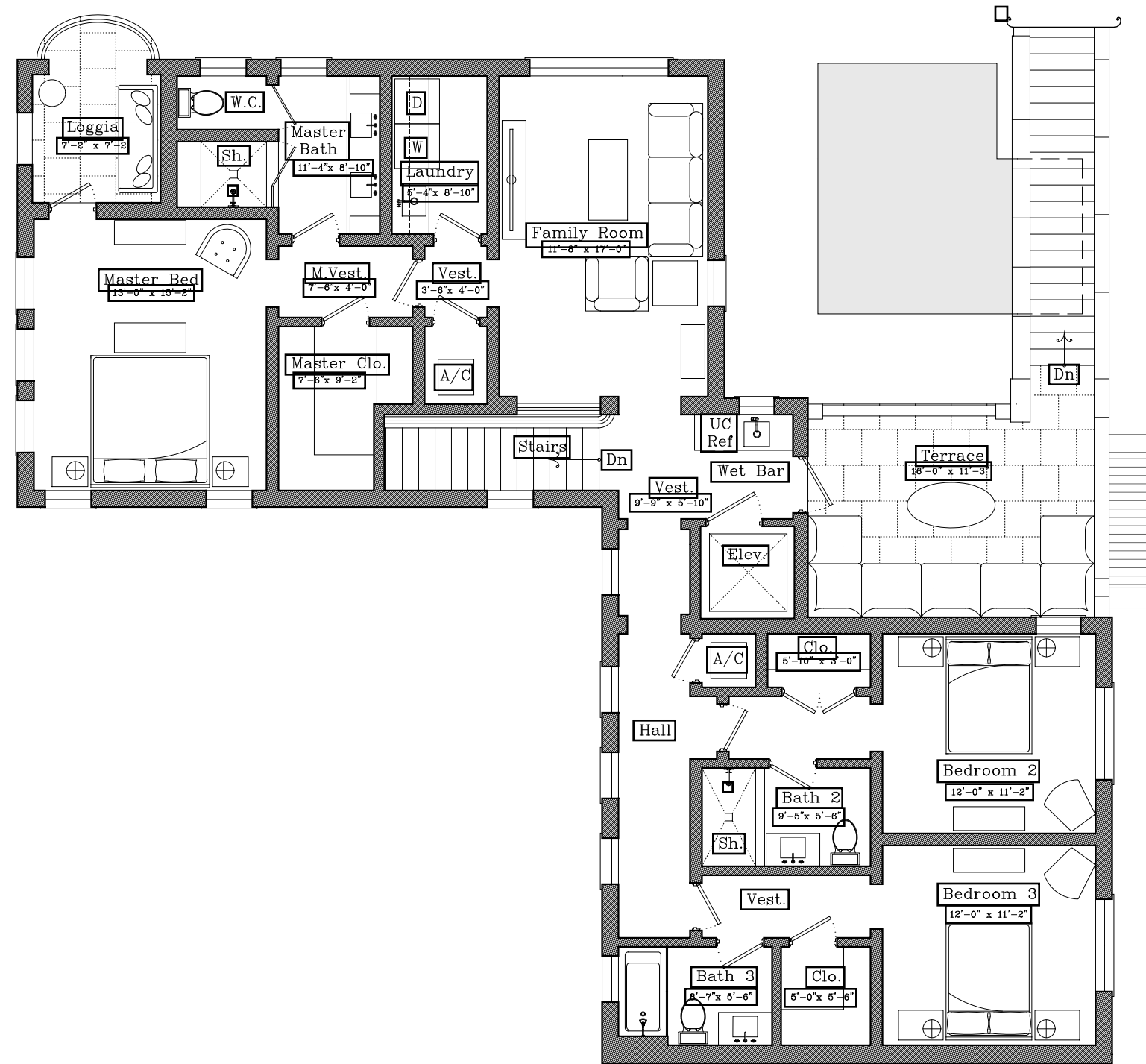
AC INTERIOR AREA	2,863 SF
COVERED TERRACE	379 SF
OPEN TERRACE	793 SF
GARAGE	544 SF

TOTAL RESIDENCE	<b>4,760 SF</b>
ADJUSTED AREA	3,230 SF



VILLAS

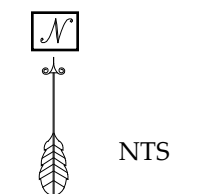
DISCLAIMER: The drawings, specifications, dimensions & any other information in these floor plans are conceptual & for illustration purposes only & should not be relied upon. References should be made to the plans & specifications at Builder's office for accurate detailed information of the floor plans including calculation of square footage, dimension & other information.



**V1**  
Second Floor

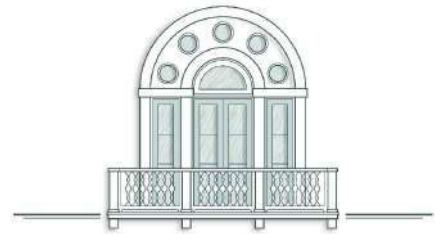
AC INTERIOR AREA	2,863 SF
COVERED TERRACE	379 SF
OPEN TERRACE	793 SF
GARAGE	544 SF

TOTAL RESIDENCE	<b>4,760 SF</b>
ADJUSTED AREA	3,230 SF



VILLAS

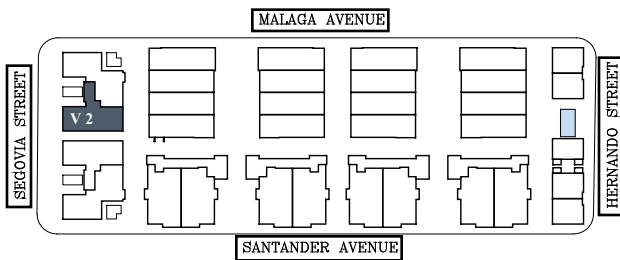




THE VILLAGE  
AT CORAL GABLES



VILLAS



V2  
First Floor

AC INTERIOR AREA	2,439 SF
COVERED TERRACE	388 SF
OPEN TERRACE	1211 SF
GARAGE	565 SF

TOTAL RESIDENCE	<b>4,803 SF</b>
ADJUSTED AREA	2,819 SF



NTS

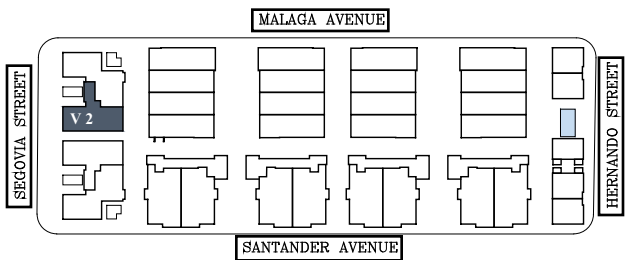
DISCLAIMER: The drawings, specifications, dimensions & any other information in these floor plans are conceptual & for illustration purposes only & should not be relied upon. References should be made to the plans & specifications at Builder's office for accurate detailed information of the floor plans including calculation of square footage, dimension & other information.



**THE VILLAGE**  
AT CORAL GABLES



VILLAS



**V2**  
Second Floor

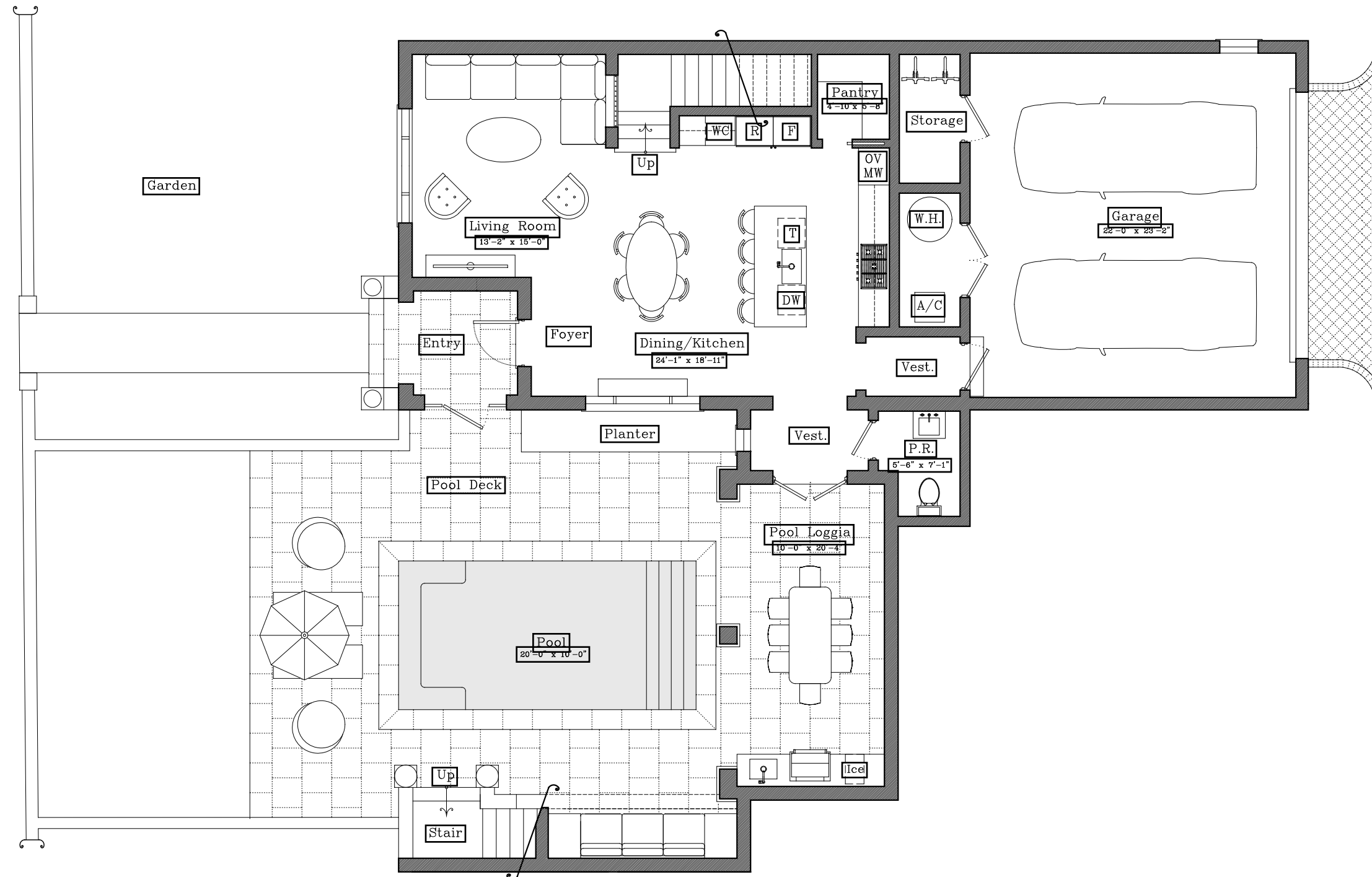
AC INTERIOR AREA	2,439 SF
COVERED TERRACE	388 SF
OPEN TERRACE	1211 SF
GARAGE	565 SF

TOTAL RESIDENCE	<b>4,803 SF</b>
ADJUSTED AREA	2,819 SF

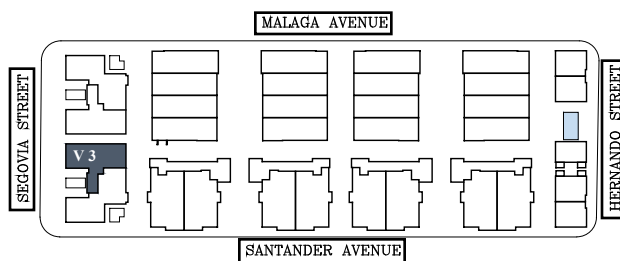


NTS

DISCLAIMER: The drawings, specifications, dimensions & any other information in these floor plans are conceptual & for illustration purposes only & should not be relied upon. References should be made to the plans & specifications at Builder's office for accurate detailed information of the floor plans including calculation of square footage, dimension & other information.



VILLAS



V3  
First Floor

AC INTERIOR AREA	2,439 SF
COVERED TERRACE	388 SF
OPEN TERRACE	1211 SF
GARAGE	565 SF

TOTAL RESIDENCE	<b>4,803 SF</b>
ADJUSTED AREA	2,819 SF

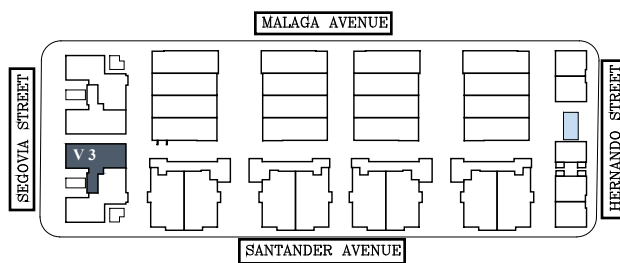


NTS





VILLAS



V3  
Second Floor

AC INTERIOR AREA	2,439 SF
COVERED TERRACE	388 SF
OPEN TERRACE	1211 SF
GARAGE	565 SF

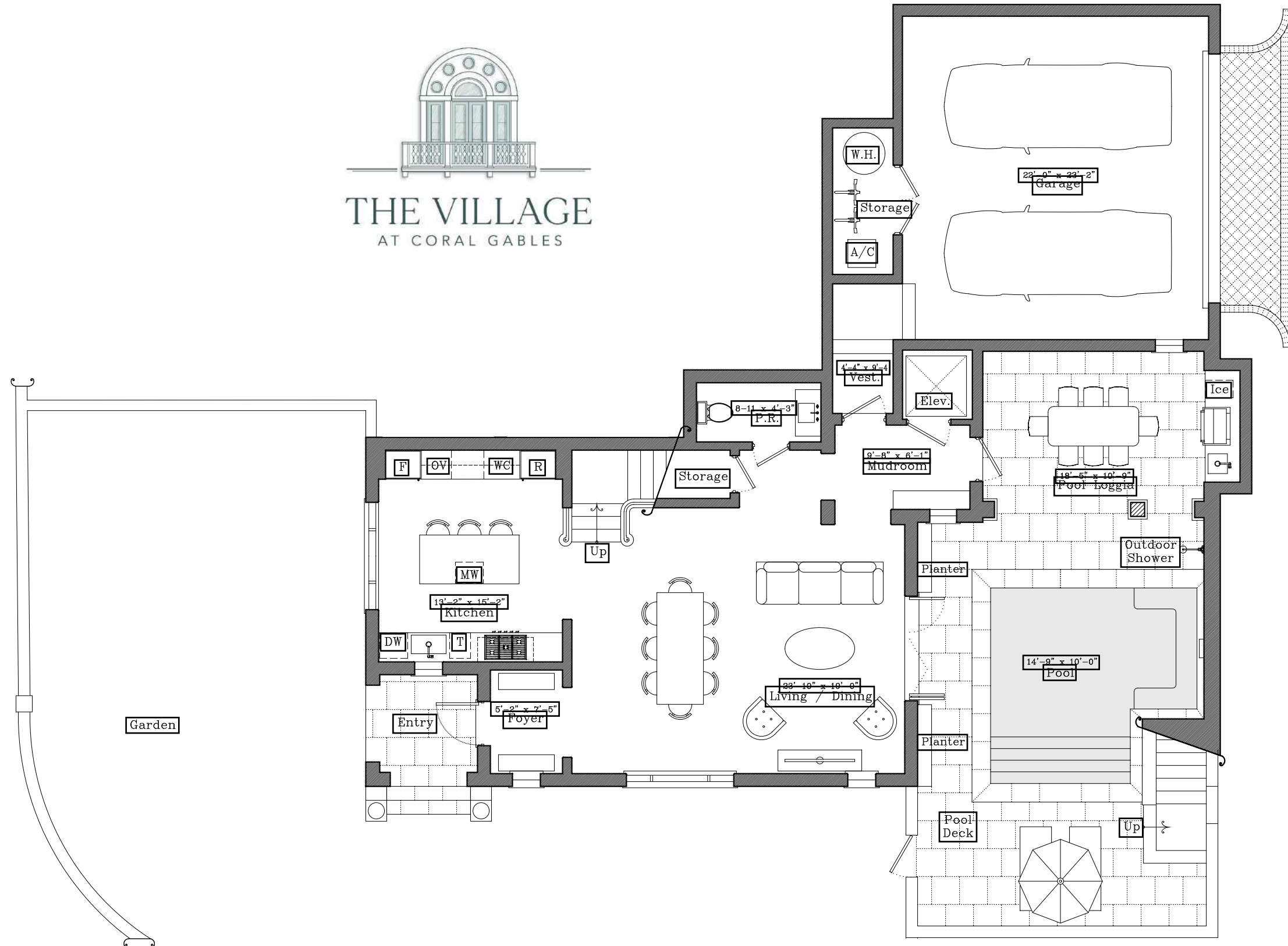
TOTAL RESIDENCE	4,803 SF
ADJUSTED AREA	2,819 SF



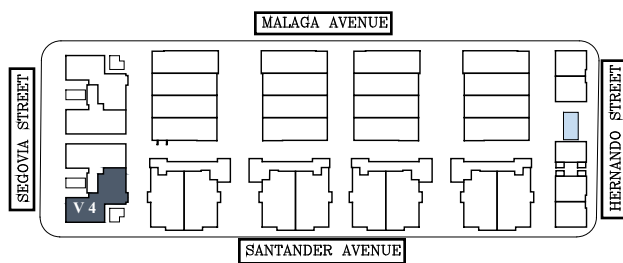
NTS



**THE VILLAGE**  
AT CORAL GABLES



VILLAS



**V4**  
First Floor

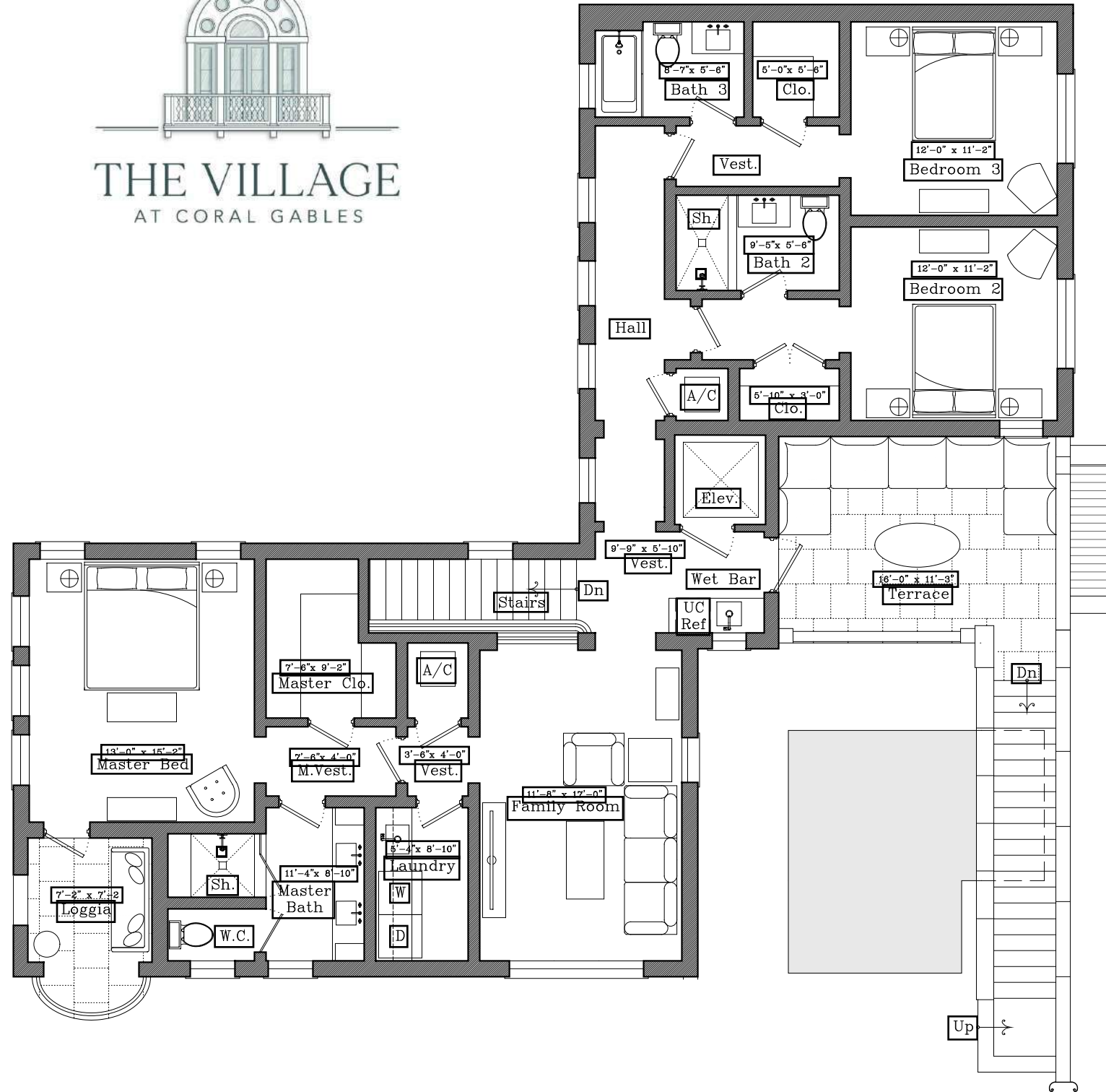
AC INTERIOR AREA	2,863 SF
COVERED TERRACE	379 SF
OPEN TERRACE	793 SF
GARAGE	544 SF

TOTAL RESIDENCE	<b>4,760 SF</b>
ADJUSTED AREA	3,230 SF

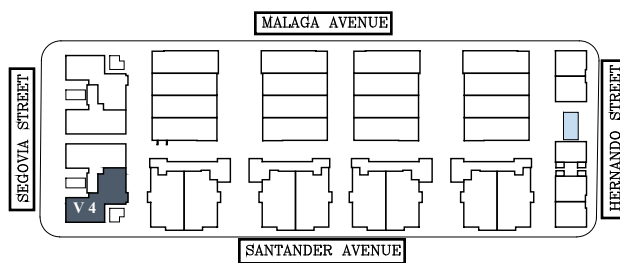


NTS





VILLAS



V4  
Second Floor

AC INTERIOR AREA	2,863 SF
COVERED TERRACE	379 SF
OPEN TERRACE	793 SF
GARAGE	544 SF

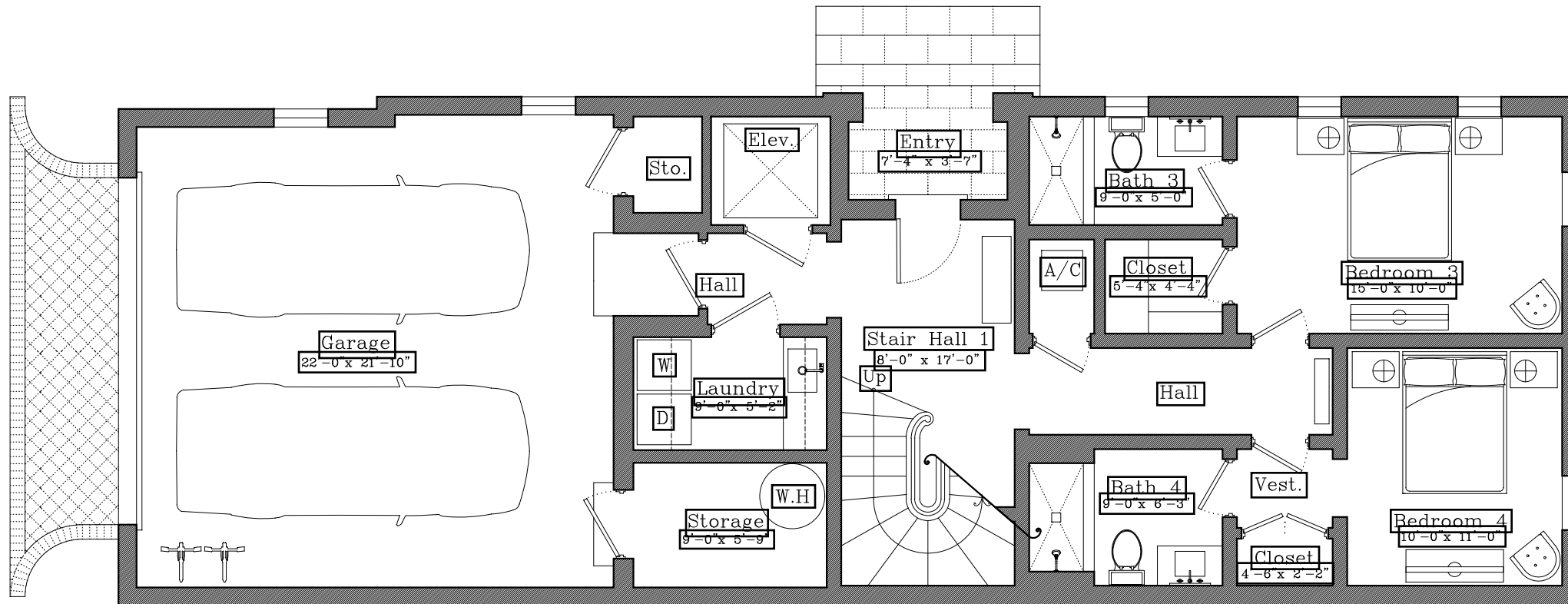
TOTAL RESIDENCE	<b>4,760 SF</b>
ADJUSTED AREA	3,230 SF



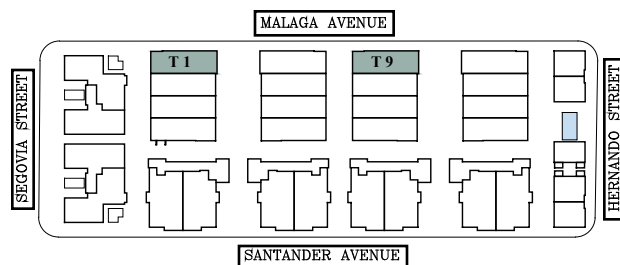
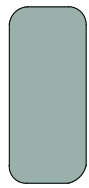
NTS



**THE VILLAGE**  
AT CORAL GABLES



TOWNHOUSES

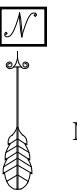


**T1-T9**

**First Floor**

AC INTERIOR AREA	3,246 SF
COVERED TERRACE	510 SF
OPEN TERRACE	209 SF
GARAGE	519 SF

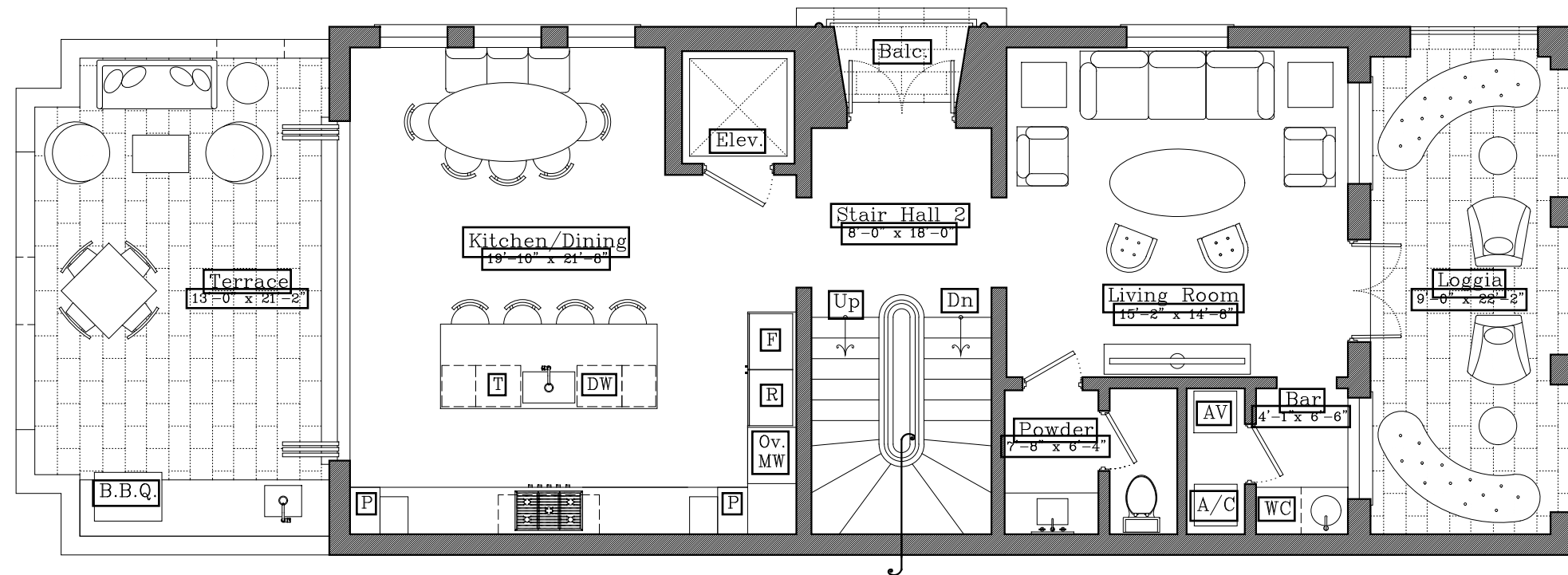
TOTAL RESIDENCE	<b>4,484 SF</b>
ADJUSTED AREA	3,634 SF



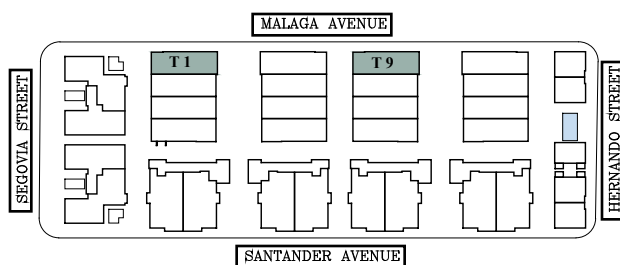
NTS



**THE VILLAGE**  
AT CORAL GABLES



TOWNHOUSES



**T1-T9**  
Second Floor

AC INTERIOR AREA	3,246 SF
COVERED TERRACE	510 SF
OPEN TERRACE	209 SF
GARAGE	519 SF

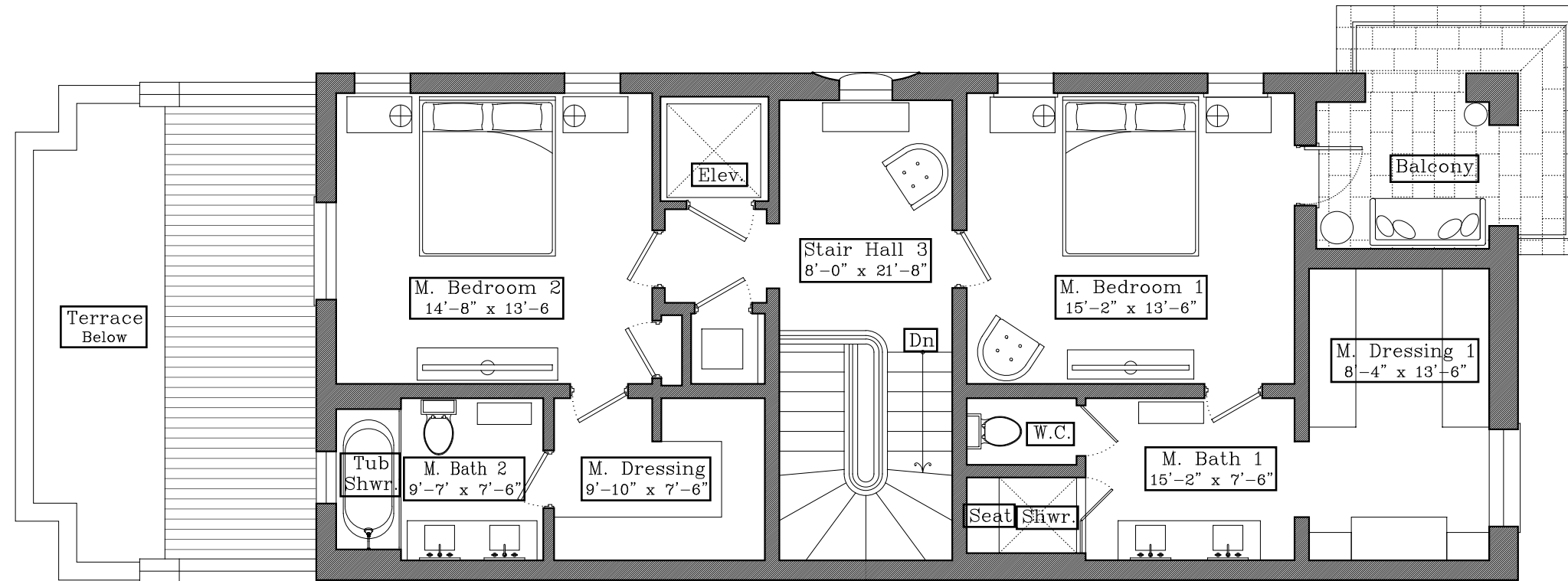
TOTAL RESIDENCE	<b>4,484 SF</b>
ADJUSTED AREA	3,634 SF



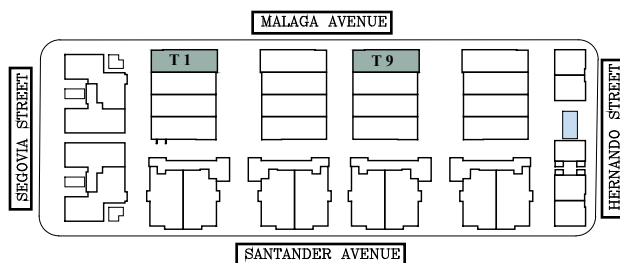
NTS



**THE VILLAGE**  
AT CORAL GABLES



TOWNHOUSES



**T1-T9**  
**Third Floor**

AC INTERIOR AREA	3,246 SF
COVERED TERRACE	510 SF
OPEN TERRACE	209 SF
GARAGE	519 SF

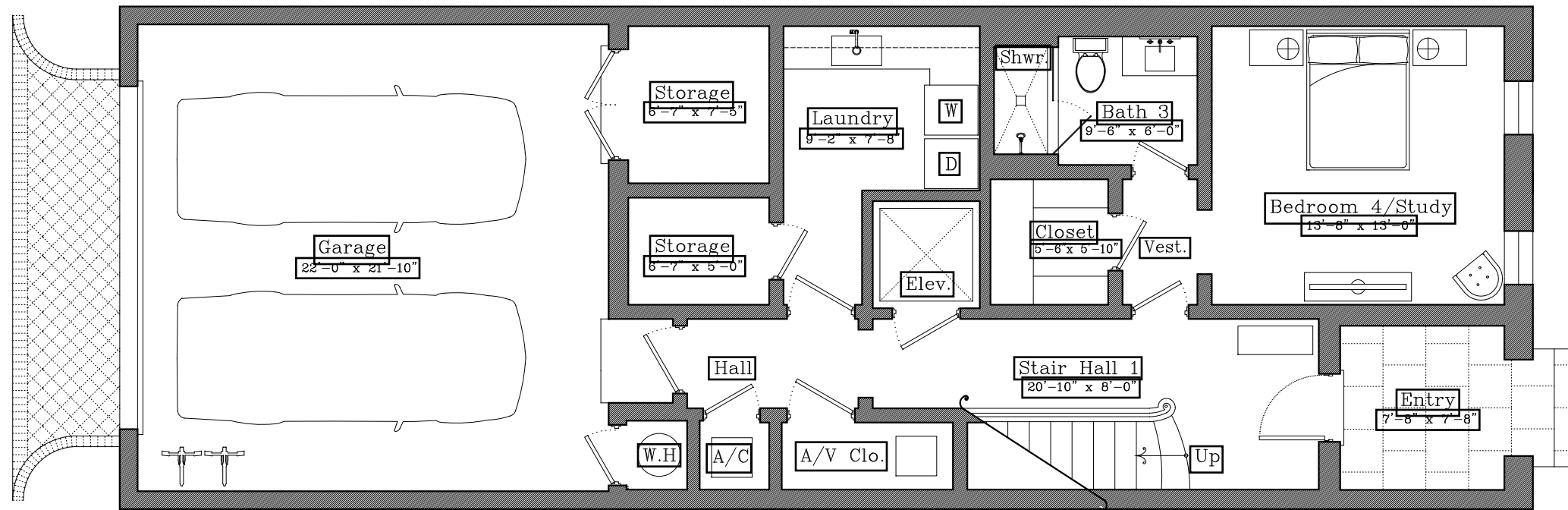
TOTAL RESIDENCE	<b>4,484 SF</b>
ADJUSTED AREA	3,634 SF



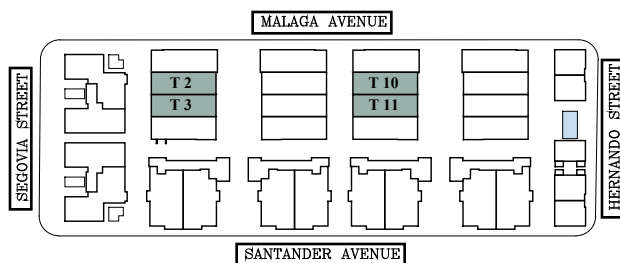
NTS



**THE VILLAGE**  
AT CORAL GABLES



TOWNHOUSES



**T2-T3-T10-T11**

**First Floor**

AC INTERIOR AREA	3,147 SF
COVERED TERRACE	435 SF
OPEN TERRACE	216 SF
GARAGE	517 SF

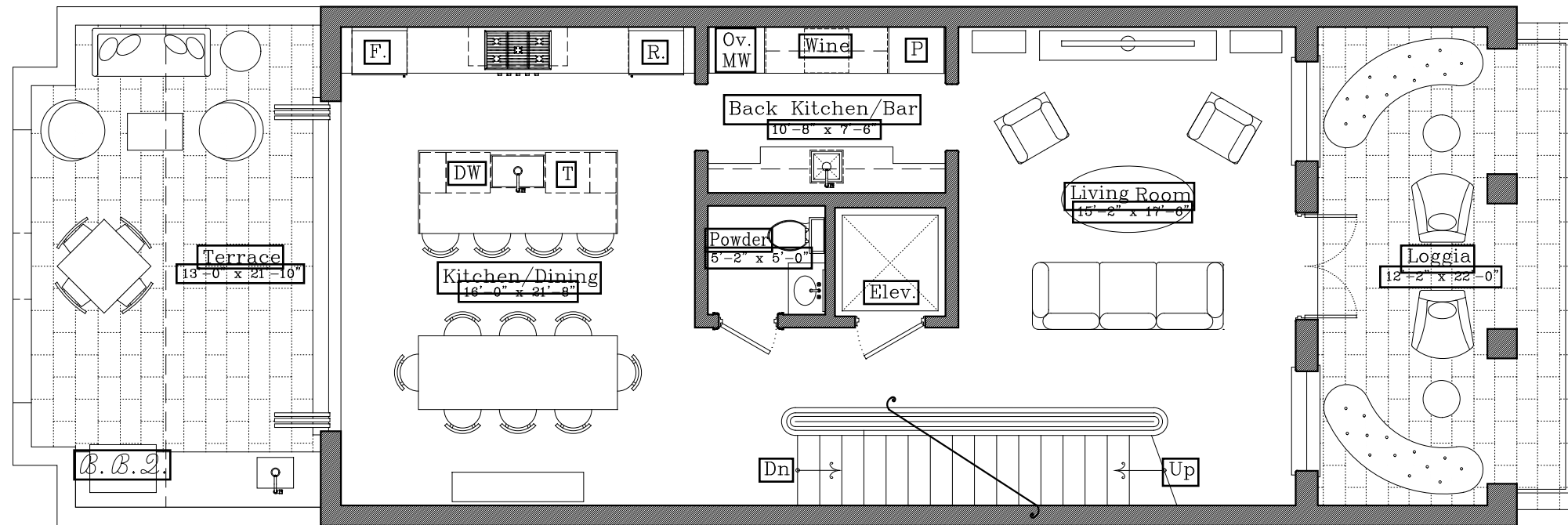
TOTAL RESIDENCE	<b>4,315 SF</b>
ADJUSTED AREA	3,515 SF



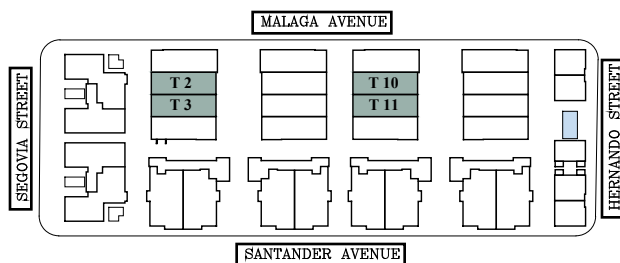
NTS



**THE VILLAGE**  
AT CORAL GABLES



TOWNHOUSES



**T2-T3-T10-T11**  
**Second Floor**

AC INTERIOR AREA	3,147 SF
COVERED TERRACE	435 SF
OPEN TERRACE	216 SF
GARAGE	517 SF

TOTAL RESIDENCE	<b>4,315 SF</b>
ADJUSTED AREA	3,515 SF

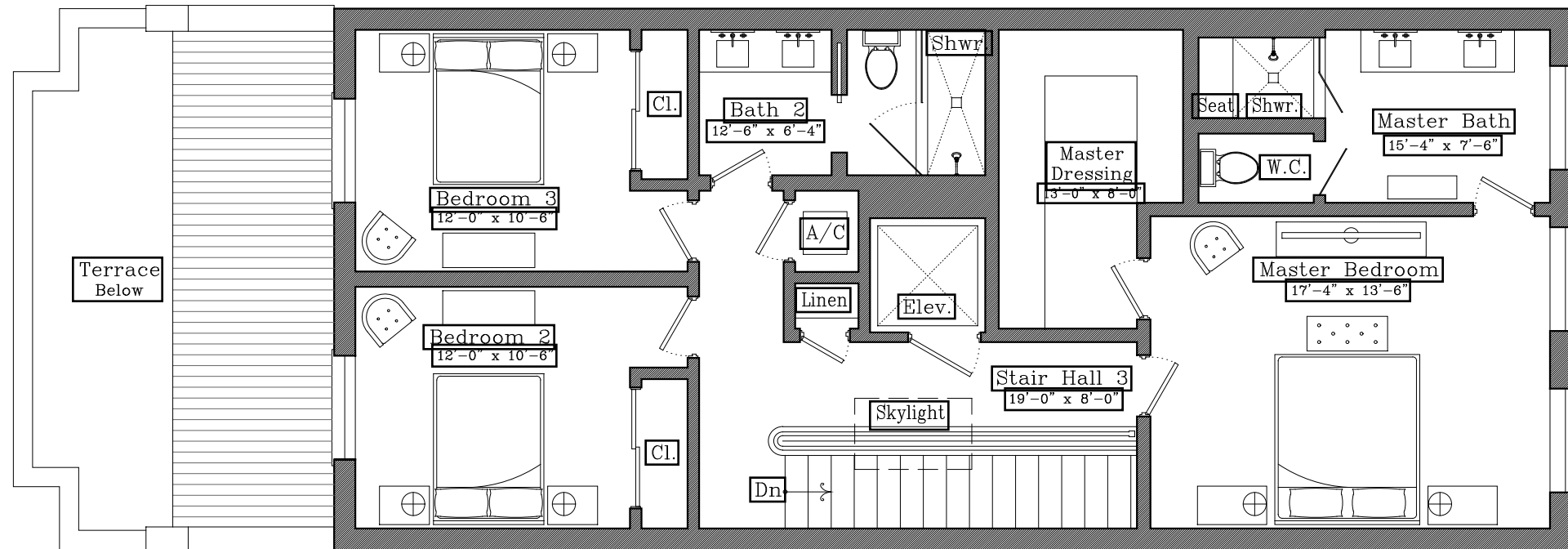


NTS

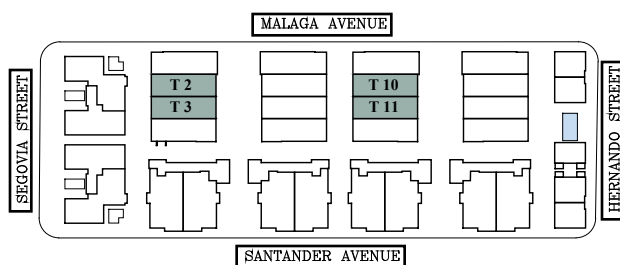




**THE VILLAGE**  
AT CORAL GABLES



TOWNHOUSES

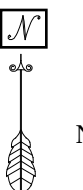


**T2-T3-T10-T11**

**Third Floor**

AC INTERIOR AREA	3,147 SF
COVERED TERRACE	435 SF
OPEN TERRACE	216 SF
GARAGE	517 SF

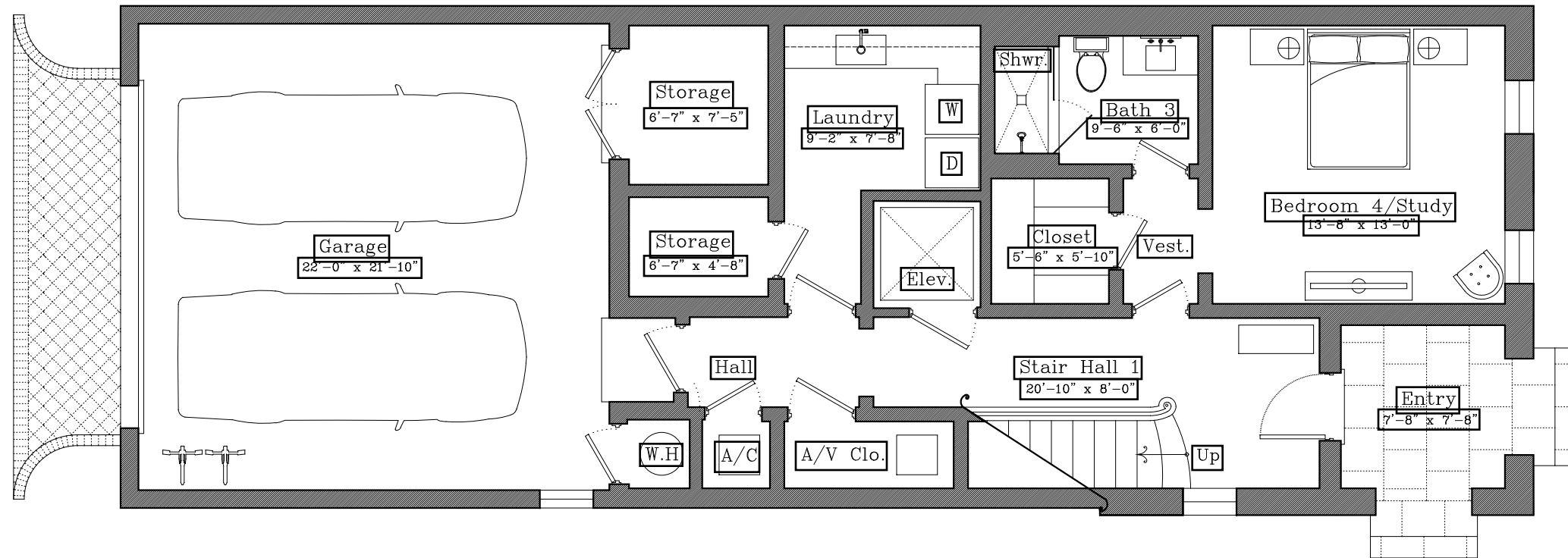
TOTAL RESIDENCE	<b>4,315 SF</b>
ADJUSTED AREA	3,515 SF



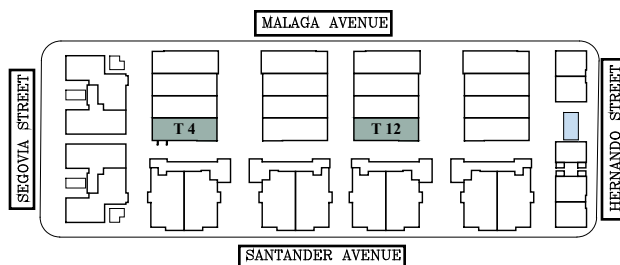
NTS



**THE VILLAGE**  
AT CORAL GABLES



TOWNHOUSES



**T4-T12**  
**First Floor**

AC INTERIOR AREA	3,218 SF
COVERED TERRACE	452 SF
OPEN TERRACE	259 SF
GARAGE	526 SF

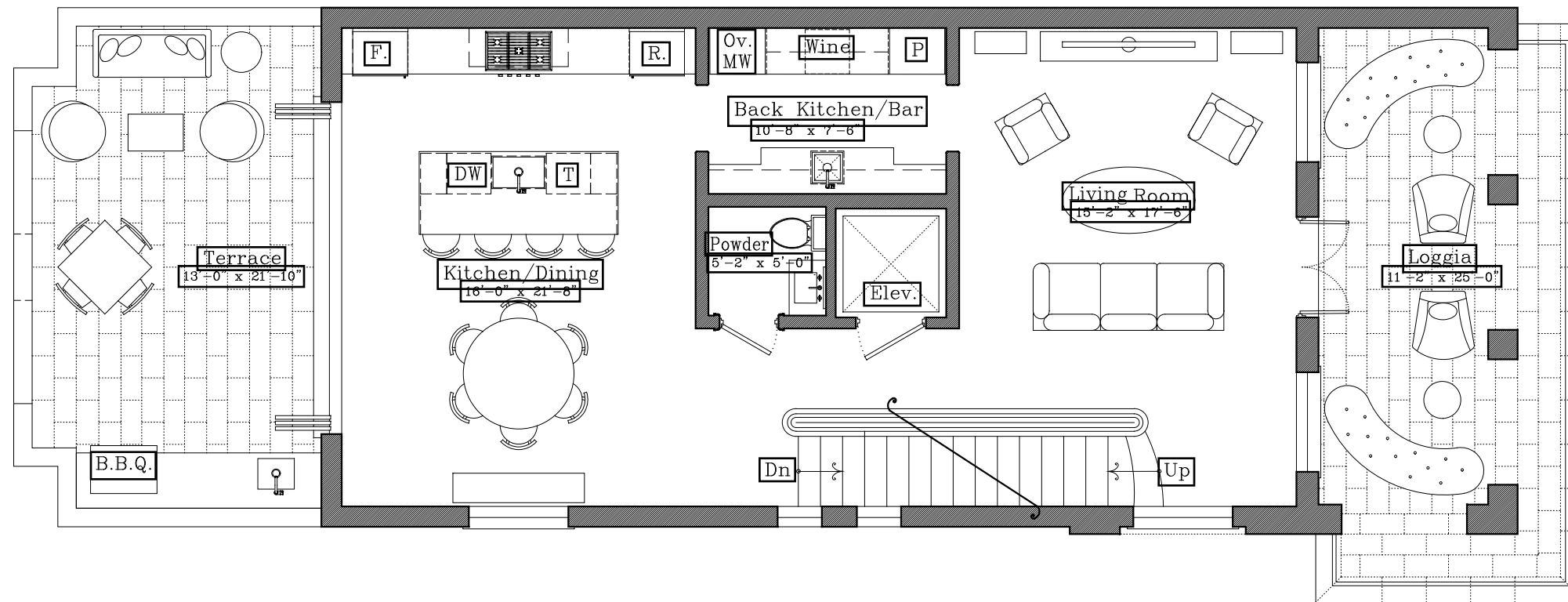
TOTAL RESIDENCE	<b>4,455 SF</b>
ADJUSTED AREA	3,594 SF



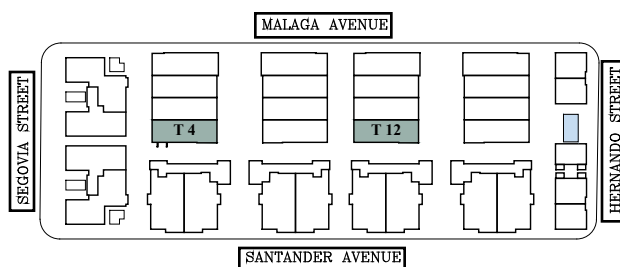
NTS



**THE VILLAGE**  
AT CORAL GABLES



TOWNHOUSES



**T4-T12**  
**Second Floor**

AC INTERIOR AREA	3,218 SF
COVERED TERRACE	452 SF
OPEN TERRACE	259 SF
GARAGE	526 SF

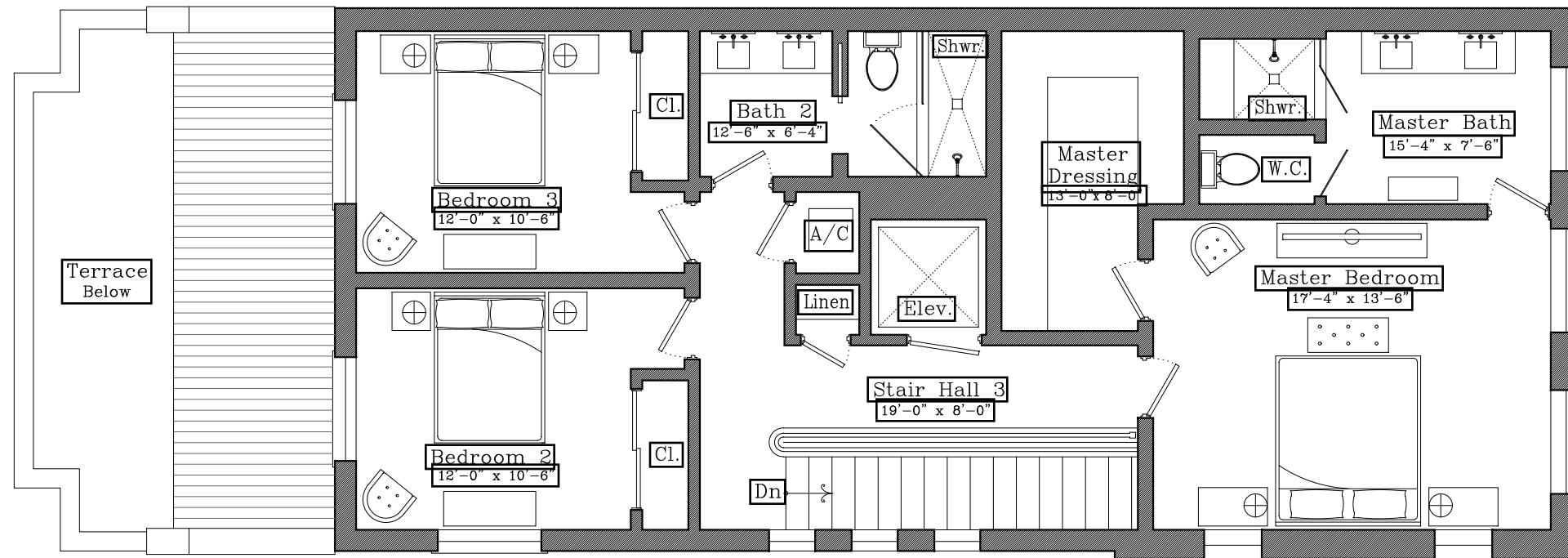
TOTAL RESIDENCE	<b>4,455 SF</b>
ADJUSTED AREA	3,594 SF



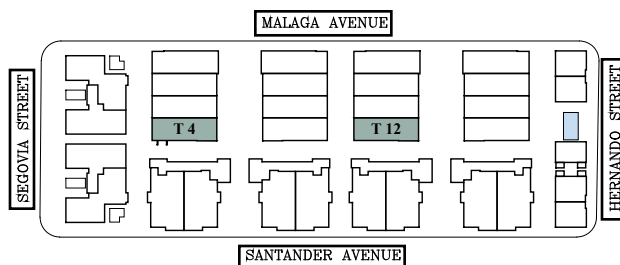
NTS



**THE VILLAGE**  
AT CORAL GABLES



TOWNHOUSES



**T4-T12**  
**Third Floor**

AC INTERIOR AREA	3,218 SF
COVERED TERRACE	452 SF
OPEN TERRACE	259 SF
GARAGE	526 SF

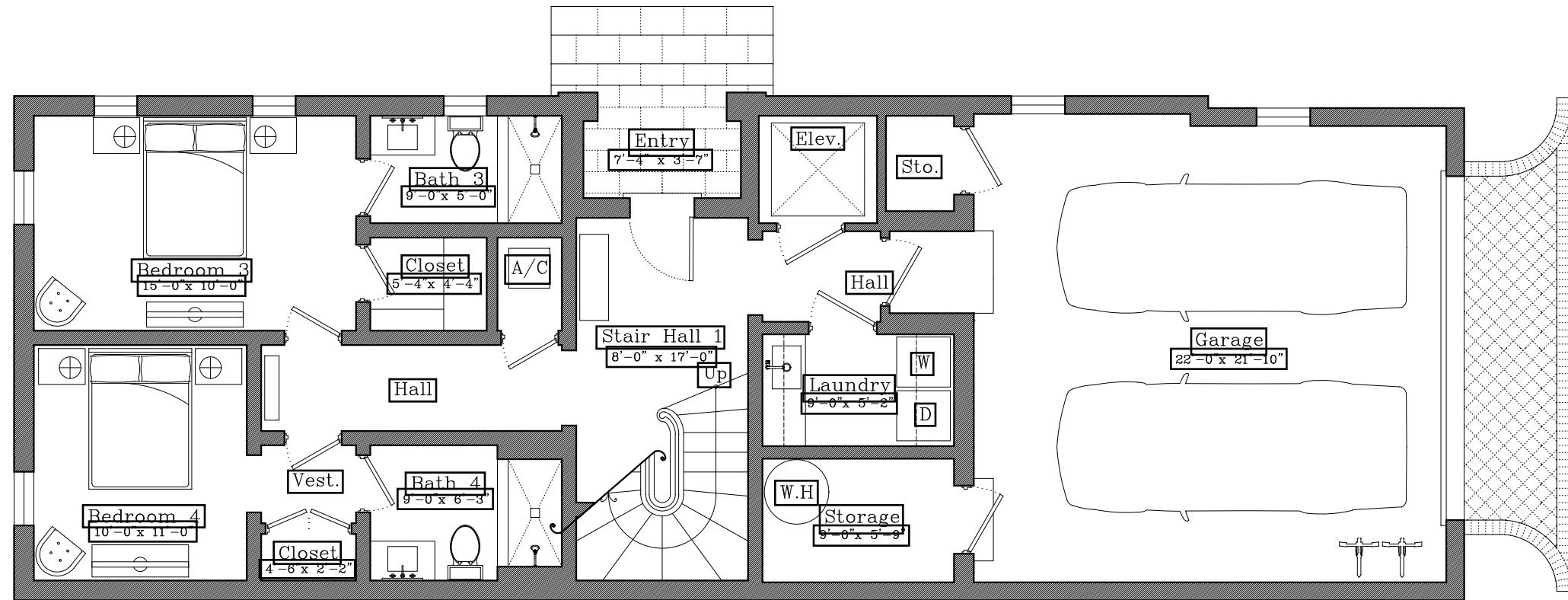
TOTAL RESIDENCE	<b>4,455 SF</b>
ADJUSTED AREA	3,594 SF



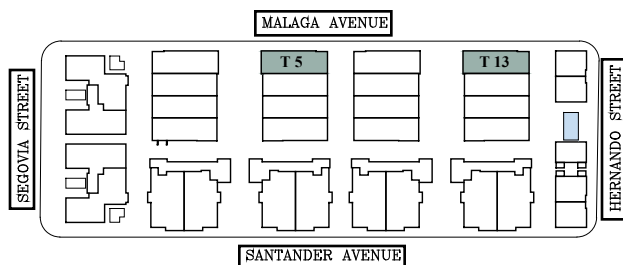
NTS



**THE VILLAGE**  
AT CORAL GABLES



TOWNHOUSES



**T5-T13**  
**First Floor**

AC INTERIOR AREA	3,246 SF
COVERED TERRACE	510 SF
OPEN TERRACE	209 SF
GARAGE	519 SF

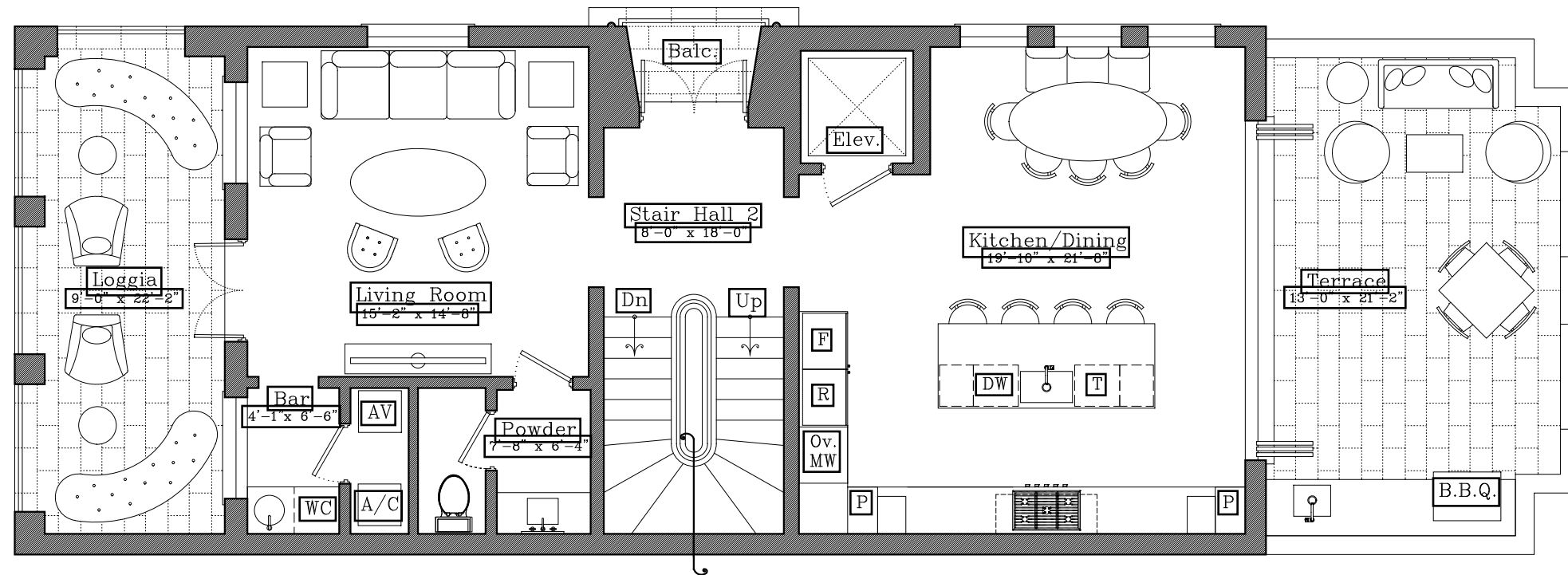
TOTAL RESIDENCE	<b>4,484 SF</b>
ADJUSTED AREA	3,634 SF



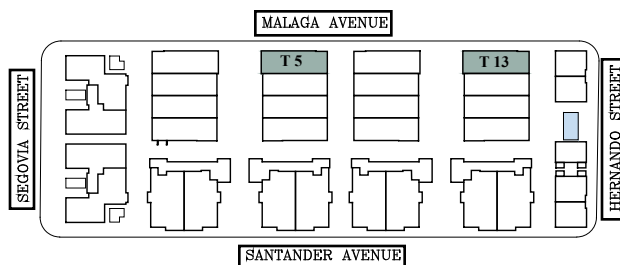
NTS



**THE VILLAGE**  
AT CORAL GABLES



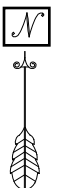
TOWNHOUSES



**T5-T13**  
Second Floor

AC INTERIOR AREA	3,246 SF
COVERED TERRACE	510 SF
OPEN TERRACE	209 SF
GARAGE	519 SF

TOTAL RESIDENCE	<b>4,484 SF</b>
ADJUSTED AREA	3,634 SF

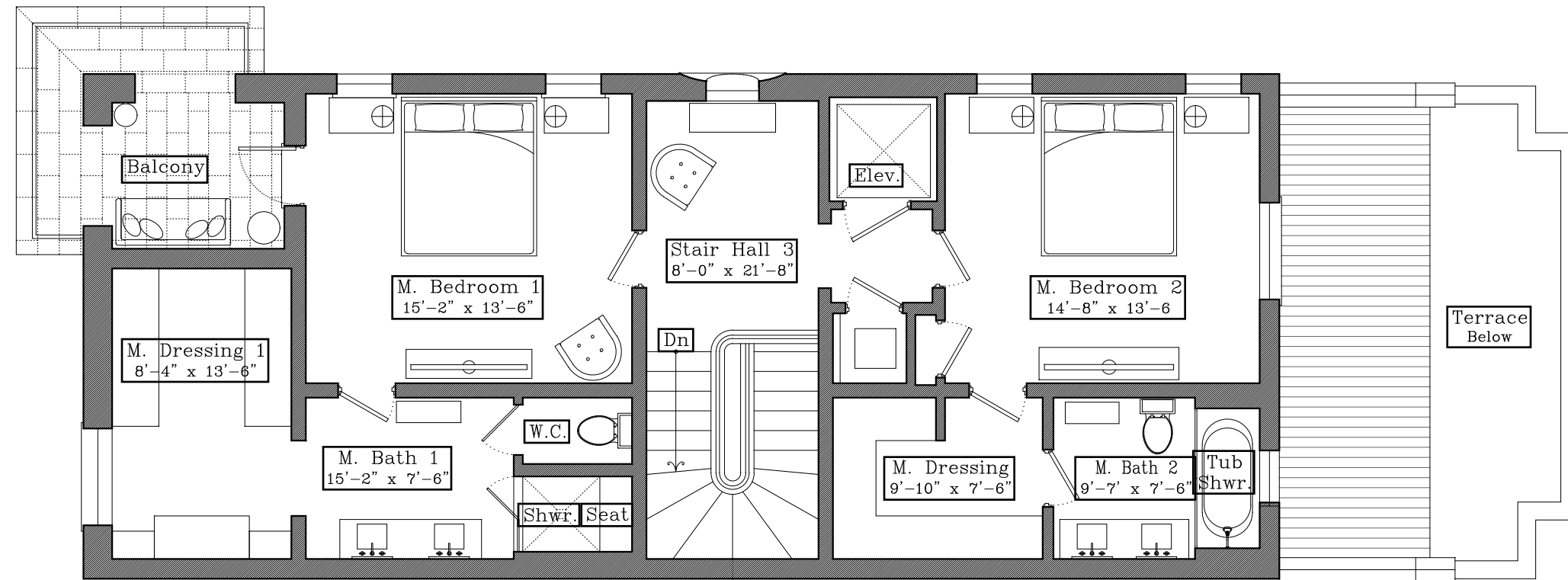


NTS

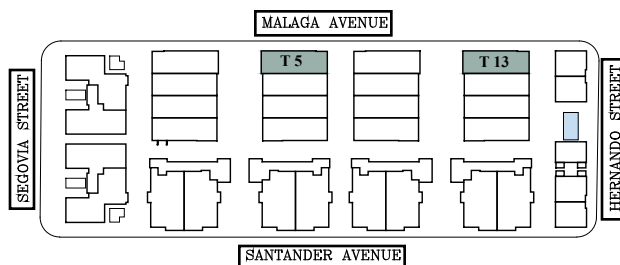




**THE VILLAGE**  
AT CORAL GABLES



TOWNHOUSES



**T5-T13**  
Third Floor

AC INTERIOR AREA	3,246 SF
COVERED TERRACE	510 SF
OPEN TERRACE	209 SF
GARAGE	519 SF

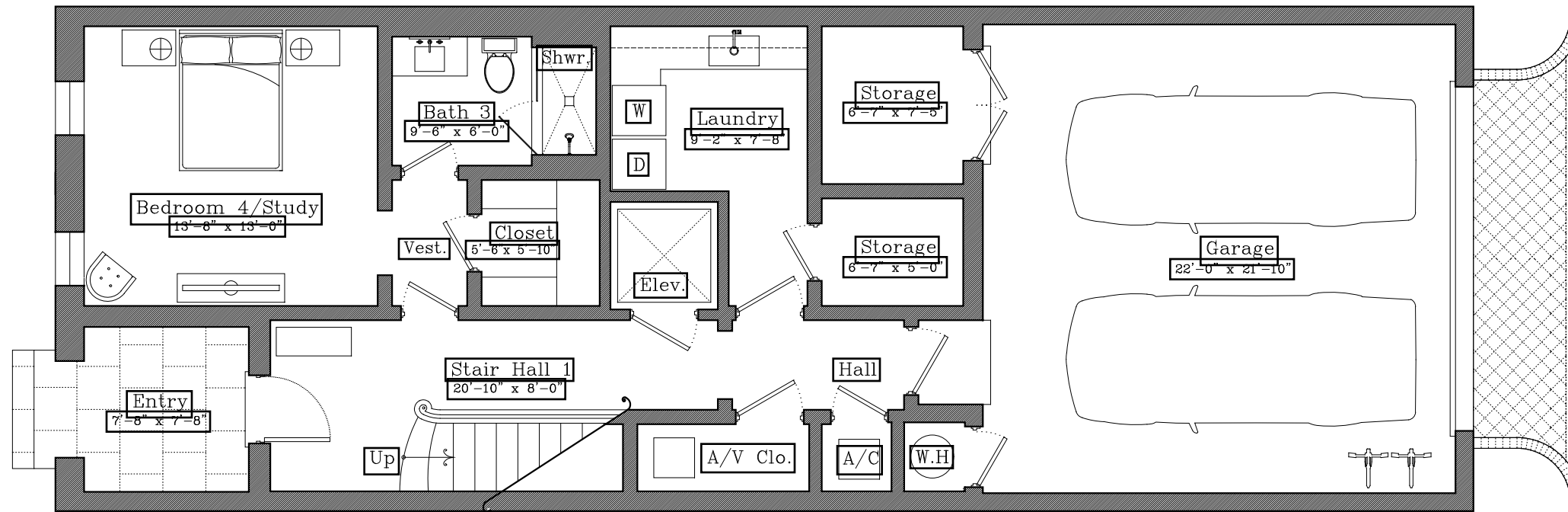
TOTAL RESIDENCE	<b>4,484 SF</b>
ADJUSTED AREA	3,634 SF



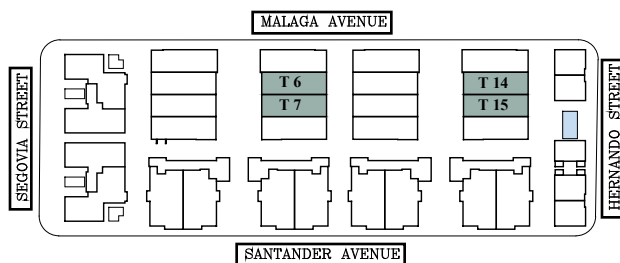
NTS



**THE VILLAGE**  
AT CORAL GABLES



TOWNHOUSES



**T6-T7-T14-T15**

**First Floor**

AC INTERIOR AREA	3,147 SF
COVERED TERRACE	435 SF
OPEN TERRACE	216 SF
GARAGE	517 SF

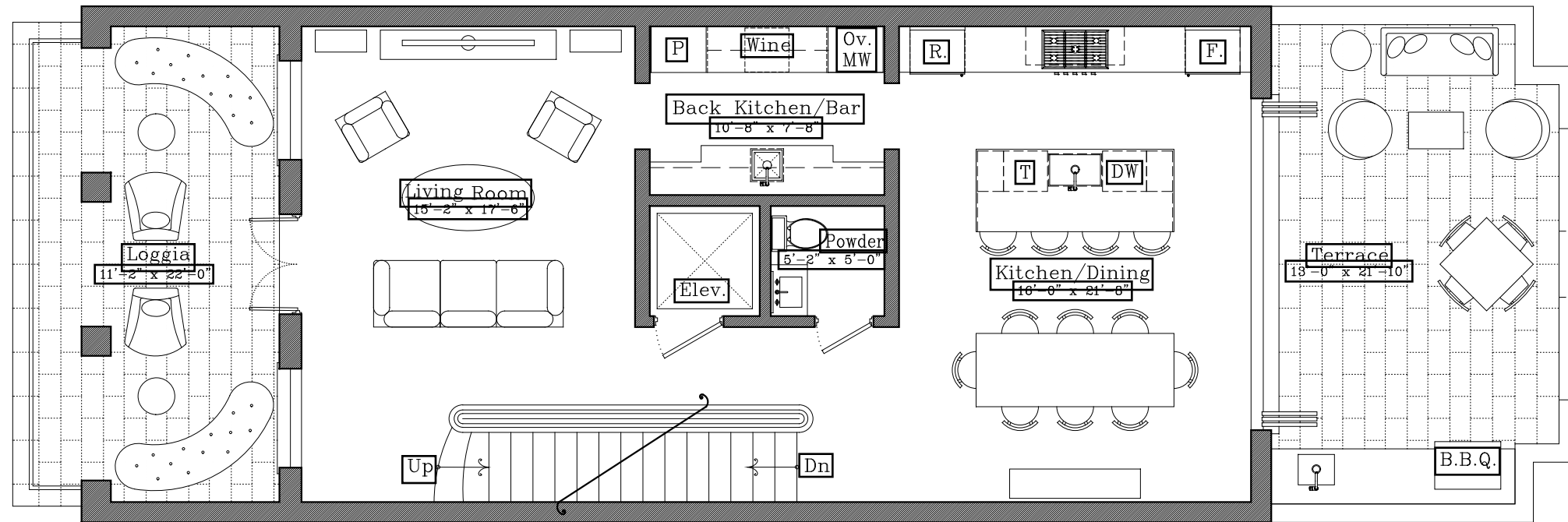
TOTAL RESIDENCE	<b>4,315 SF</b>
ADJUSTED AREA	3,515 SF



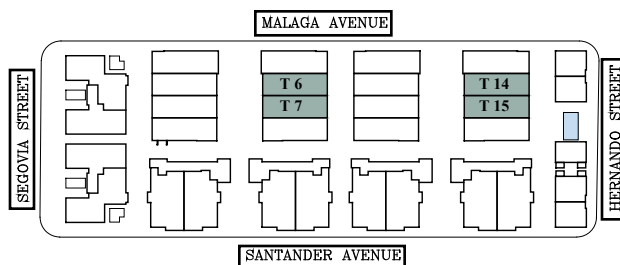
NTS



**THE VILLAGE**  
AT CORAL GABLES



TOWNHOUSES



**T6-T7-T14-T15**  
**Second Floor**

AC INTERIOR AREA	3,147 SF
COVERED TERRACE	435 SF
OPEN TERRACE	216 SF
GARAGE	517 SF

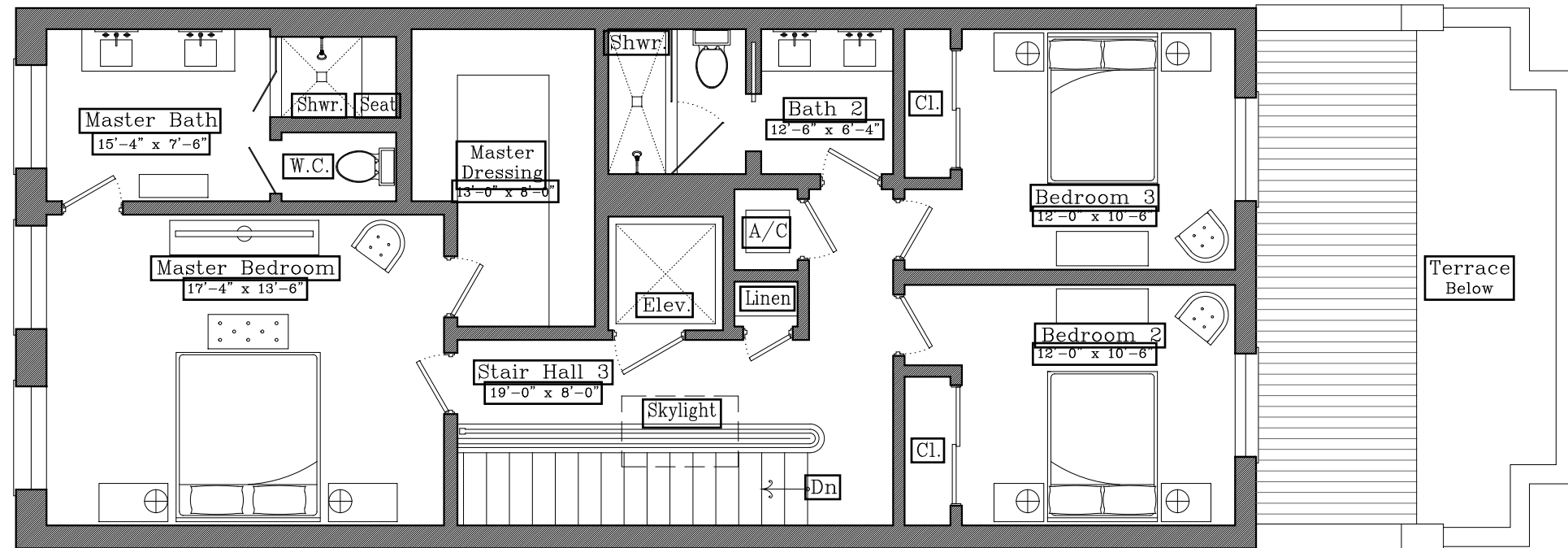
TOTAL RESIDENCE	<b>4,315 SF</b>
ADJUSTED AREA	3,515 SF



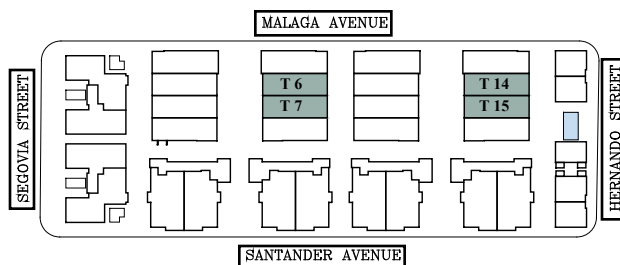
NTS



**THE VILLAGE**  
AT CORAL GABLES



TOWNHOUSES



**T6-T7-T14-T15**

**Third Floor**

AC INTERIOR AREA	3,147 SF
COVERED TERRACE	435 SF
OPEN TERRACE	216 SF
GARAGE	517 SF

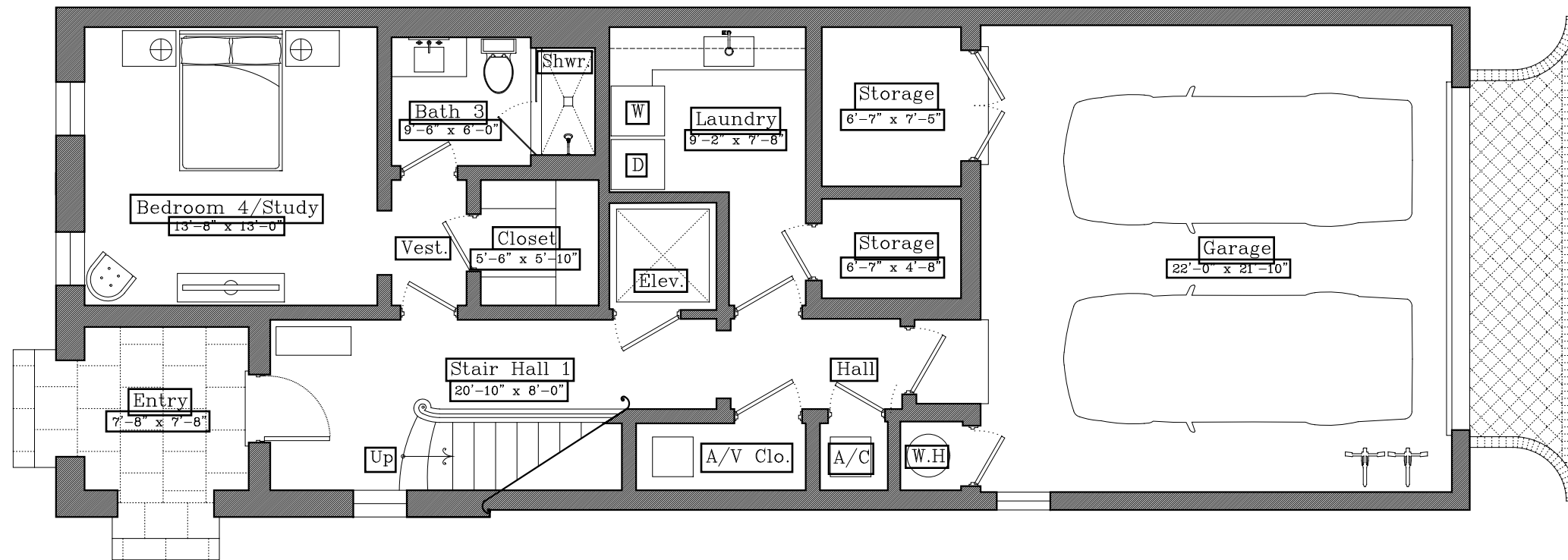
TOTAL RESIDENCE	<b>4,315 SF</b>
ADJUSTED AREA	3,515 SF



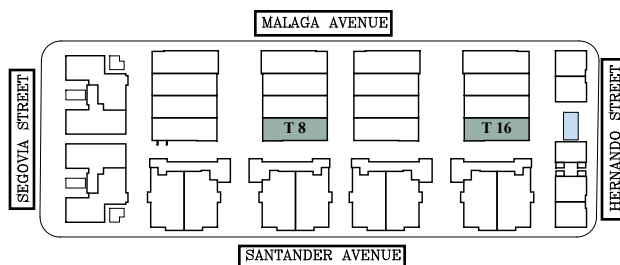
NTS



**THE VILLAGE**  
AT CORAL GABLES



TOWNHOUSES



**T8-T16**  
**First Floor**

AC INTERIOR AREA	3,218 SF
COVERED TERRACE	452 SF
OPEN TERRACE	259 SF
GARAGE	526 SF

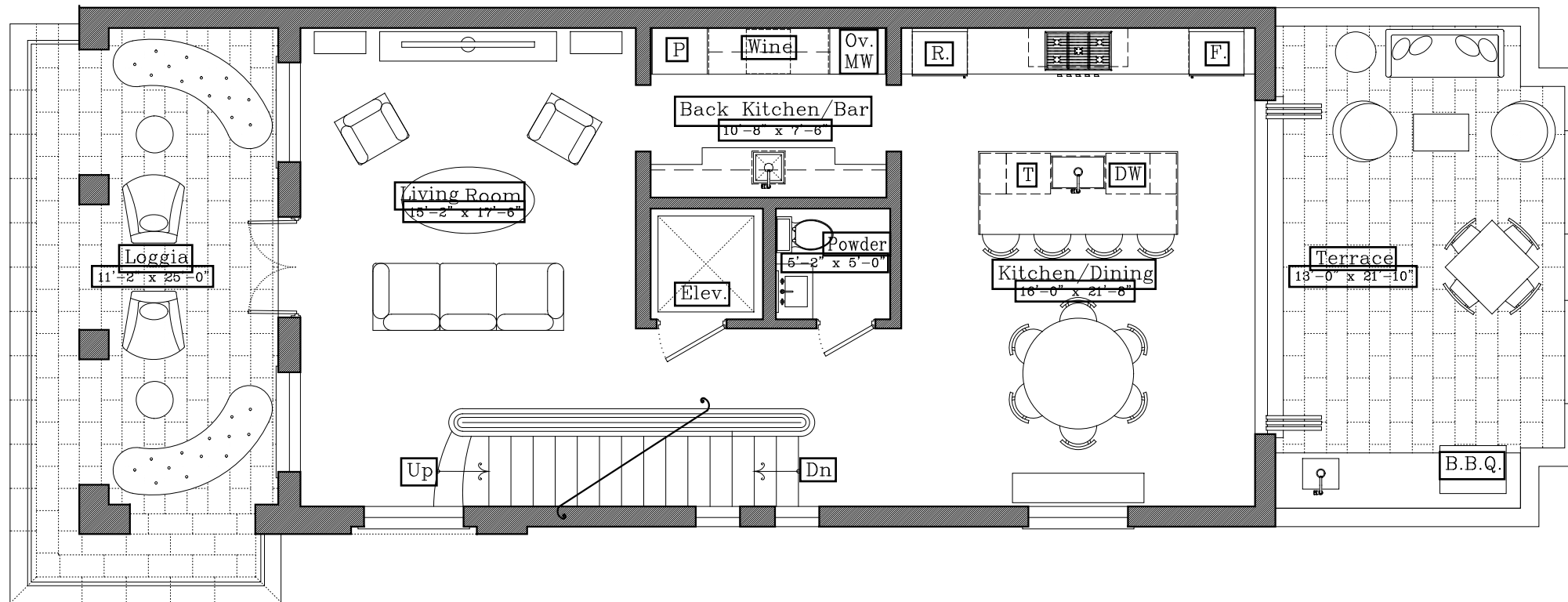
TOTAL RESIDENCE	<b>4,455 SF</b>
ADJUSTED AREA	3,594 SF



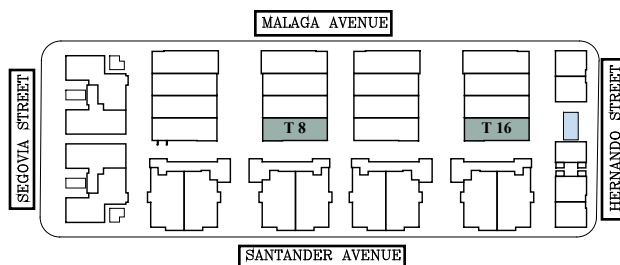
NTS



**THE VILLAGE**  
AT CORAL GABLES



TOWNHOUSES



**T8-T16**  
Second Floor

AC INTERIOR AREA	3,218 SF
COVERED TERRACE	452 SF
OPEN TERRACE	259 SF
GARAGE	526 SF

TOTAL RESIDENCE	<b>4,455 SF</b>
ADJUSTED AREA	3,594 SF

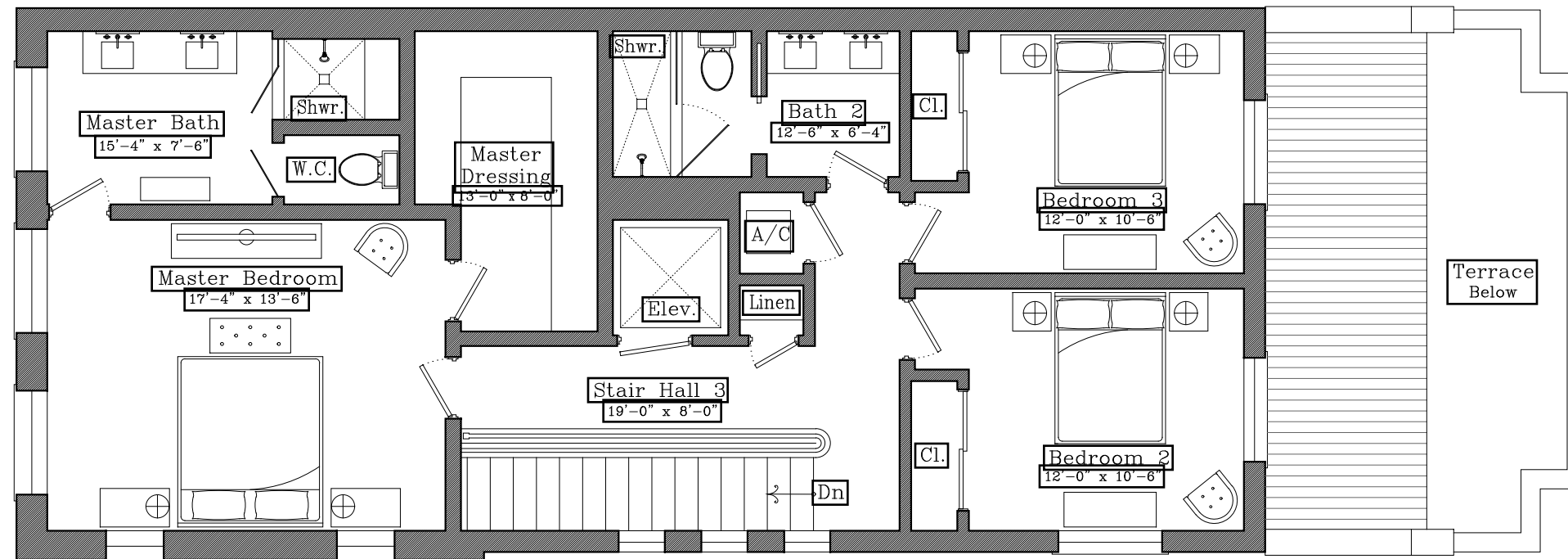


NTS

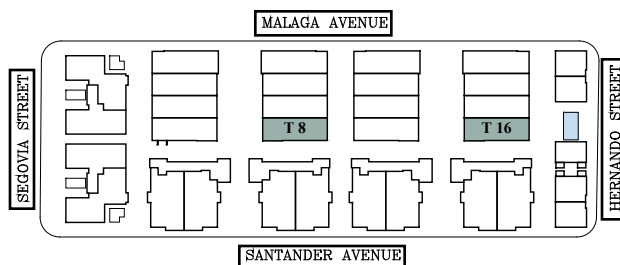




**THE VILLAGE**  
AT CORAL GABLES



TOWNHOUSES



**T8-T16**  
**Third Floor**

AC INTERIOR AREA	3,218 SF
COVERED TERRACE	452 SF
OPEN TERRACE	259 SF
GARAGE	526 SF

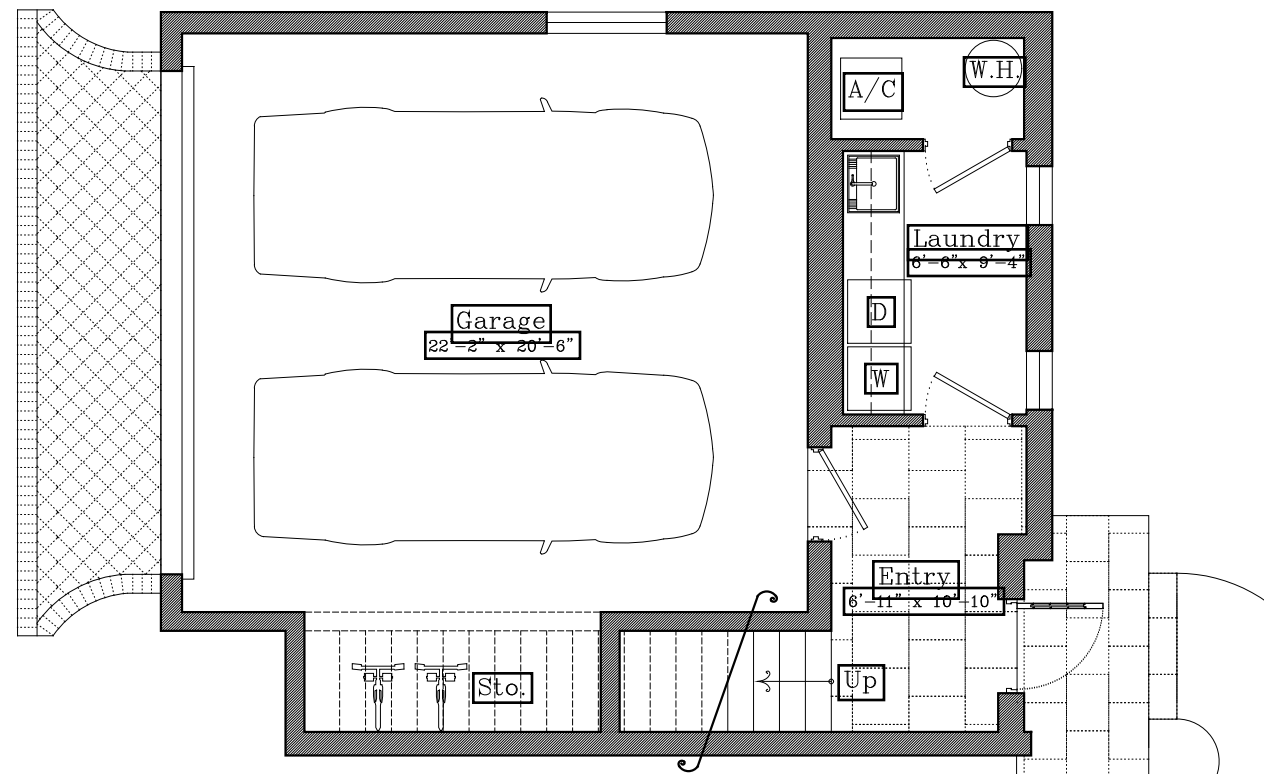
TOTAL RESIDENCE	<b>4,455 SF</b>
ADJUSTED AREA	3,594 SF



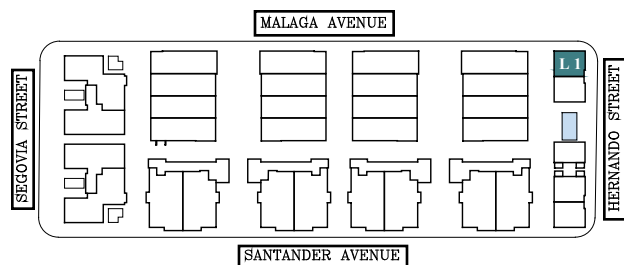
NTS



**THE VILLAGE**  
AT CORAL GABLES



LOFTS



**L1**  
First Floor

AC INTERIOR AREA	1,881 SF
BALCONY	52 SF
GARAGE	542 SF

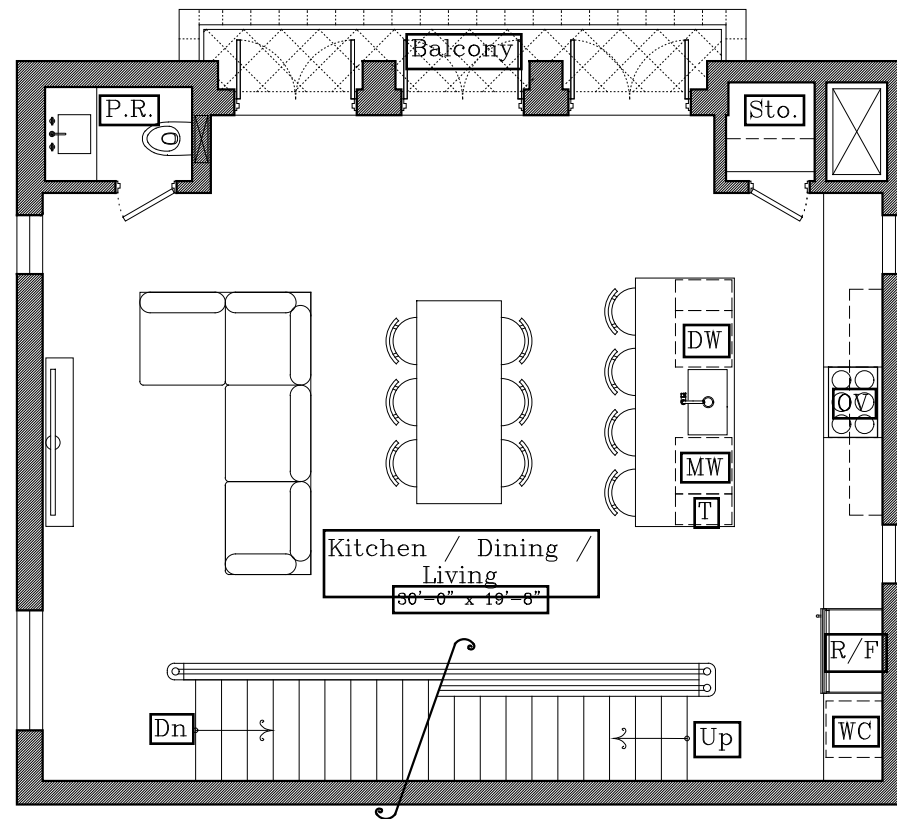
TOTAL RESIDENCE	<b>2,475 SF</b>
ADJUSTED AREA	2,152 SF



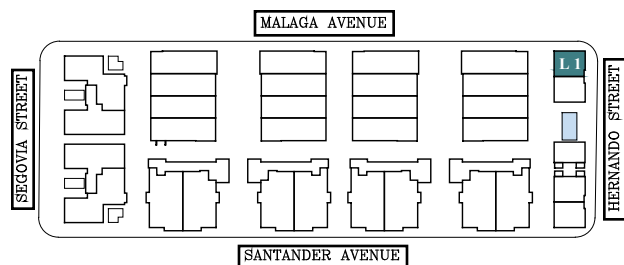
NTS



**THE VILLAGE**  
AT CORAL GABLES



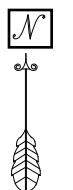
LOFTS



**L1**  
**Second Floor**

AC INTERIOR AREA	1,881 SF
BALCONY	52 SF
GARAGE	542 SF

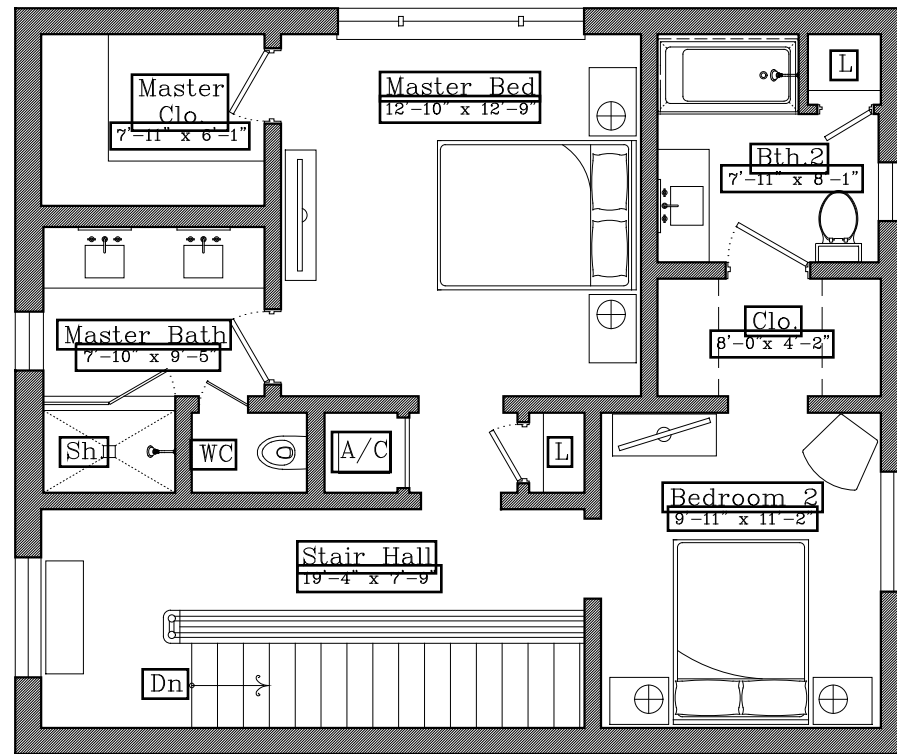
TOTAL RESIDENCE	<b>2,475 SF</b>
ADJUSTED AREA	2,152 SF



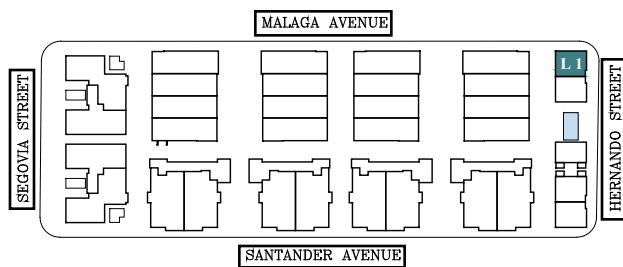
NTS



**THE VILLAGE**  
AT CORAL GABLES



LOFTS



**L1**  
**Third Floor**

AC INTERIOR AREA	1,881 SF
BALCONY	52 SF
GARAGE	542 SF

TOTAL RESIDENCE	<b>2,475 SF</b>
ADJUSTED AREA	2,152 SF



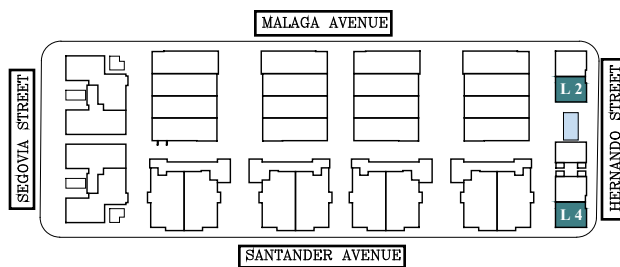
NTS



**THE VILLAGE**  
AT CORAL GABLES



LOFTS



**L2-L4**  
**First Floor**

AC INTERIOR AREA	1,881 SF
BALCONY	52 SF
GARAGE	542 SF

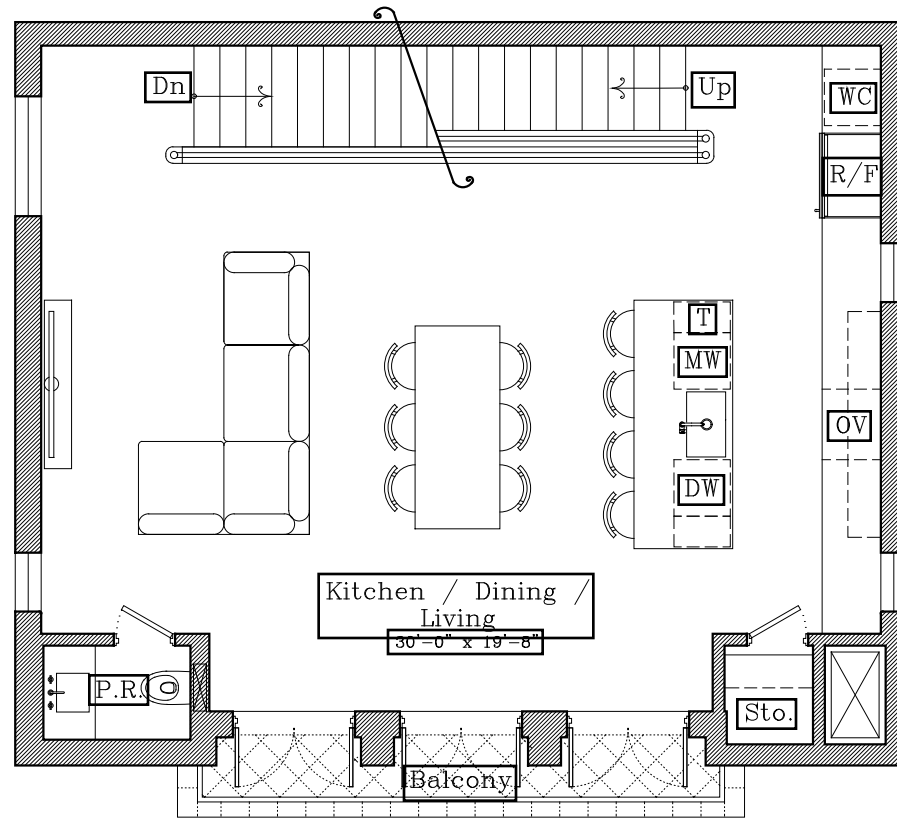
TOTAL RESIDENCE	<b>2,475 SF</b>
ADJUSTED AREA	2,152 SF



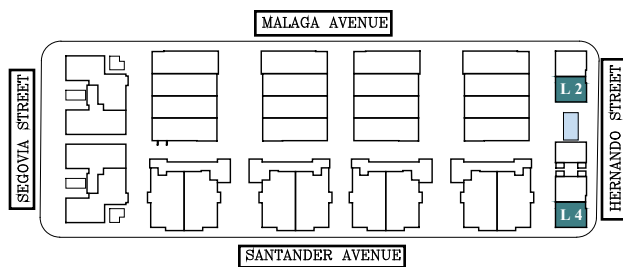
NTS



**THE VILLAGE**  
AT CORAL GABLES



LOFTS



**L2-L4**  
**Second Floor**

AC INTERIOR AREA	1,881 SF
BALCONY	52 SF
GARAGE	542 SF

TOTAL RESIDENCE	<b>2,475 SF</b>
ADJUSTED AREA	2,152 SF

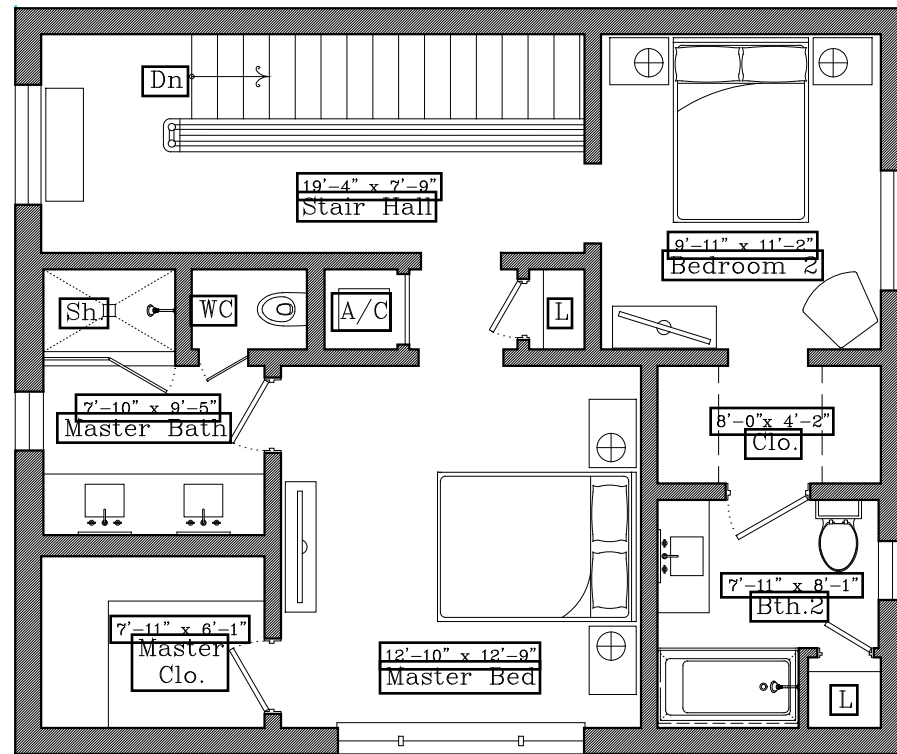


NTS

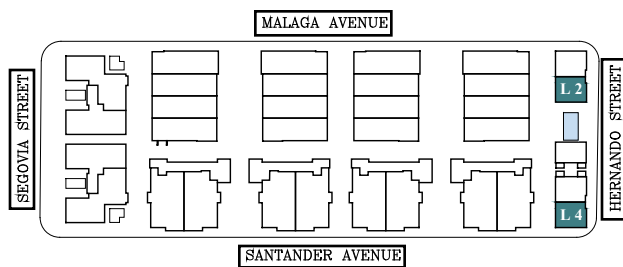




**THE VILLAGE**  
AT CORAL GABLES



LOFTS



**L2-L4**  
**Third Floor**

AC INTERIOR AREA	1,881 SF
BALCONY	52 SF
GARAGE	542 SF

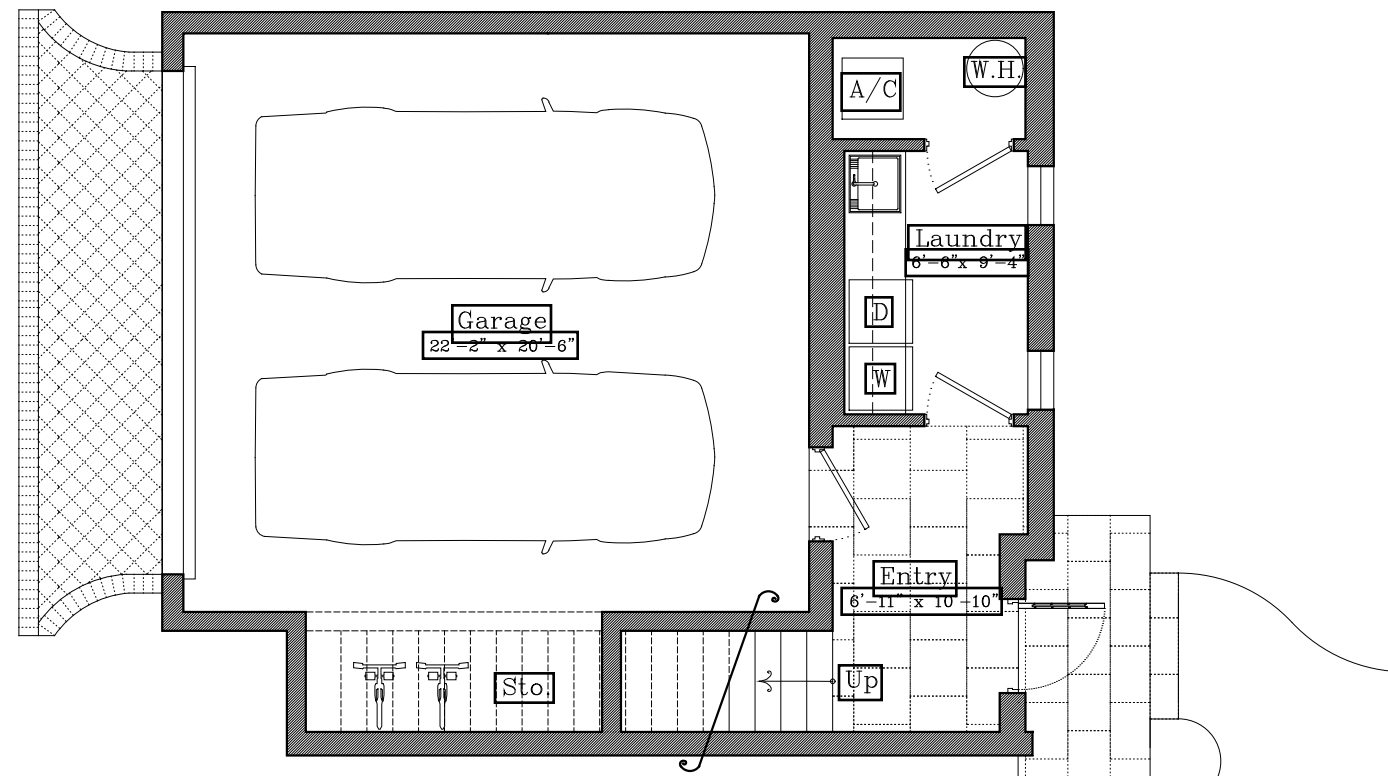
TOTAL RESIDENCE	<b>2,475 SF</b>
ADJUSTED AREA	2,152 SF



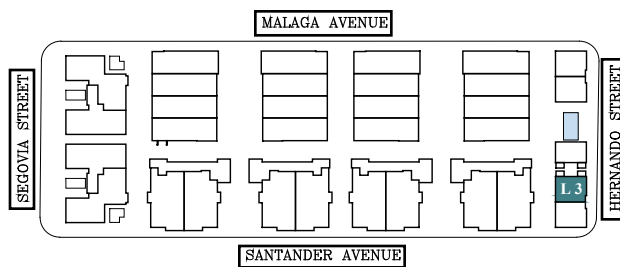
NTS



**THE VILLAGE**  
AT CORAL GABLES



LOFTS



**L3**  
**First Floor**

AC INTERIOR AREA	1,881 SF
BALCONY	346 SF
GARAGE	542 SF

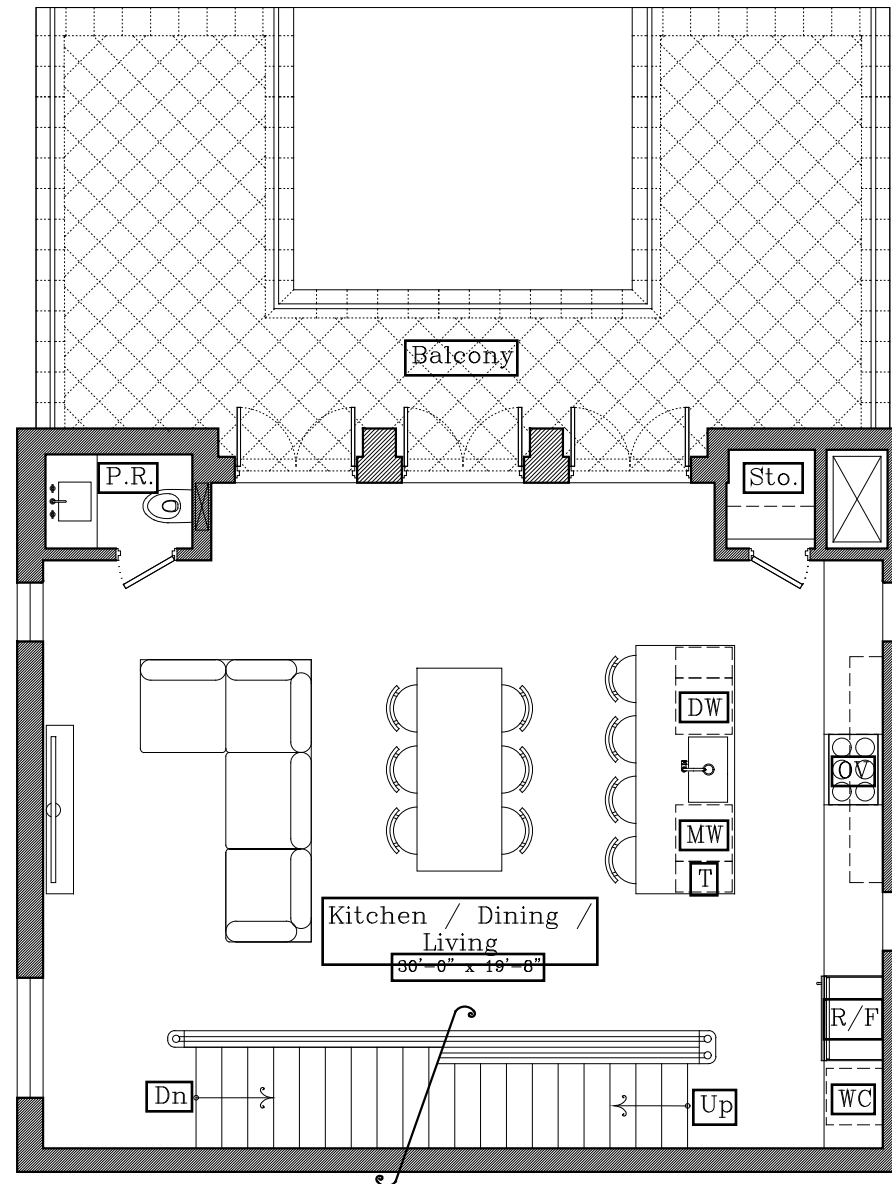
TOTAL RESIDENCE	<b>2,769 SF</b>
ADJUSTED AREA	2,152 SF



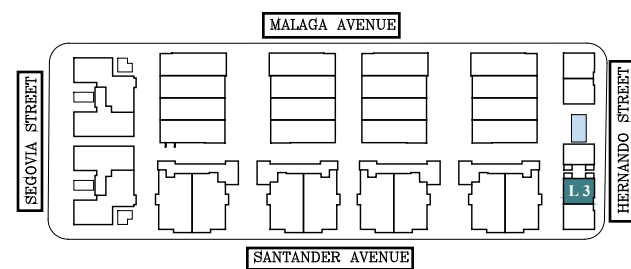
NTS



**THE VILLAGE**  
AT CORAL GABLES



LOFTS



**L3**  
**Second Floor**

AC INTERIOR AREA	1,881 SF
BALCONY	346 SF
GARAGE	542 SF

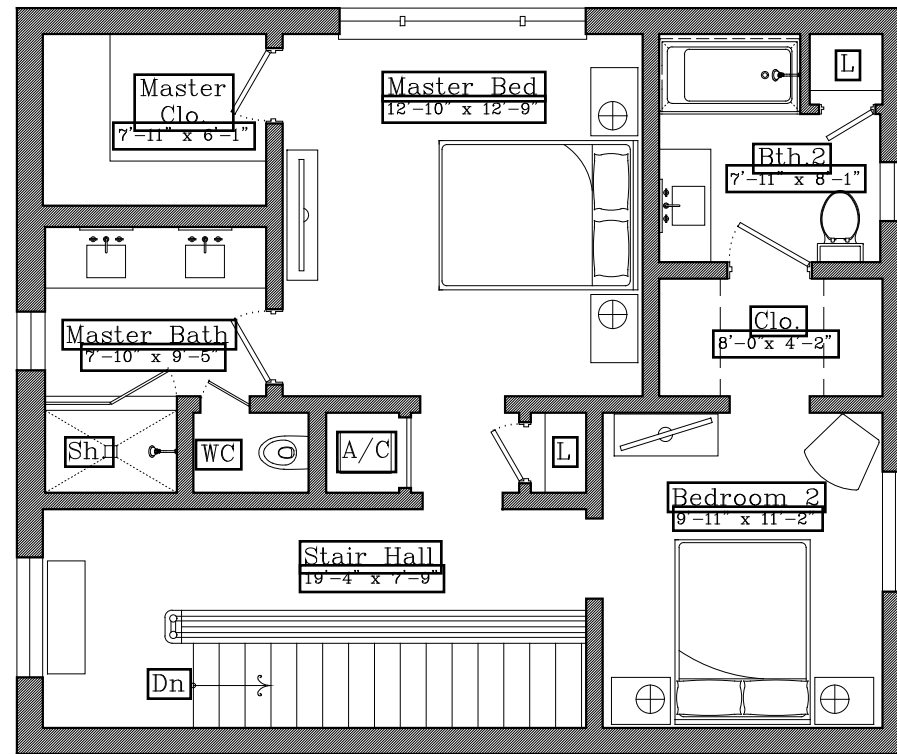
TOTAL RESIDENCE	<b>2,769 SF</b>
ADJUSTED AREA	2,152 SF



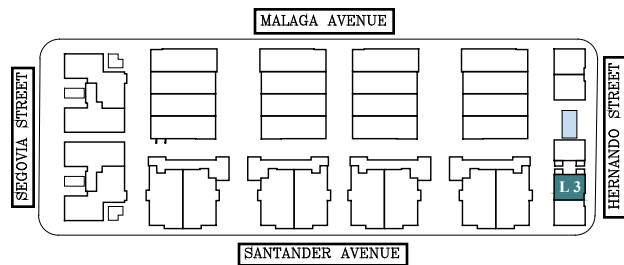
NTS



**THE VILLAGE**  
AT CORAL GABLES



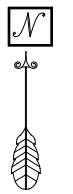
LOFTS



**L3**  
Third Floor

AC INTERIOR AREA	1,881 SF
BALCONY	346 SF
GARAGE	542 SF

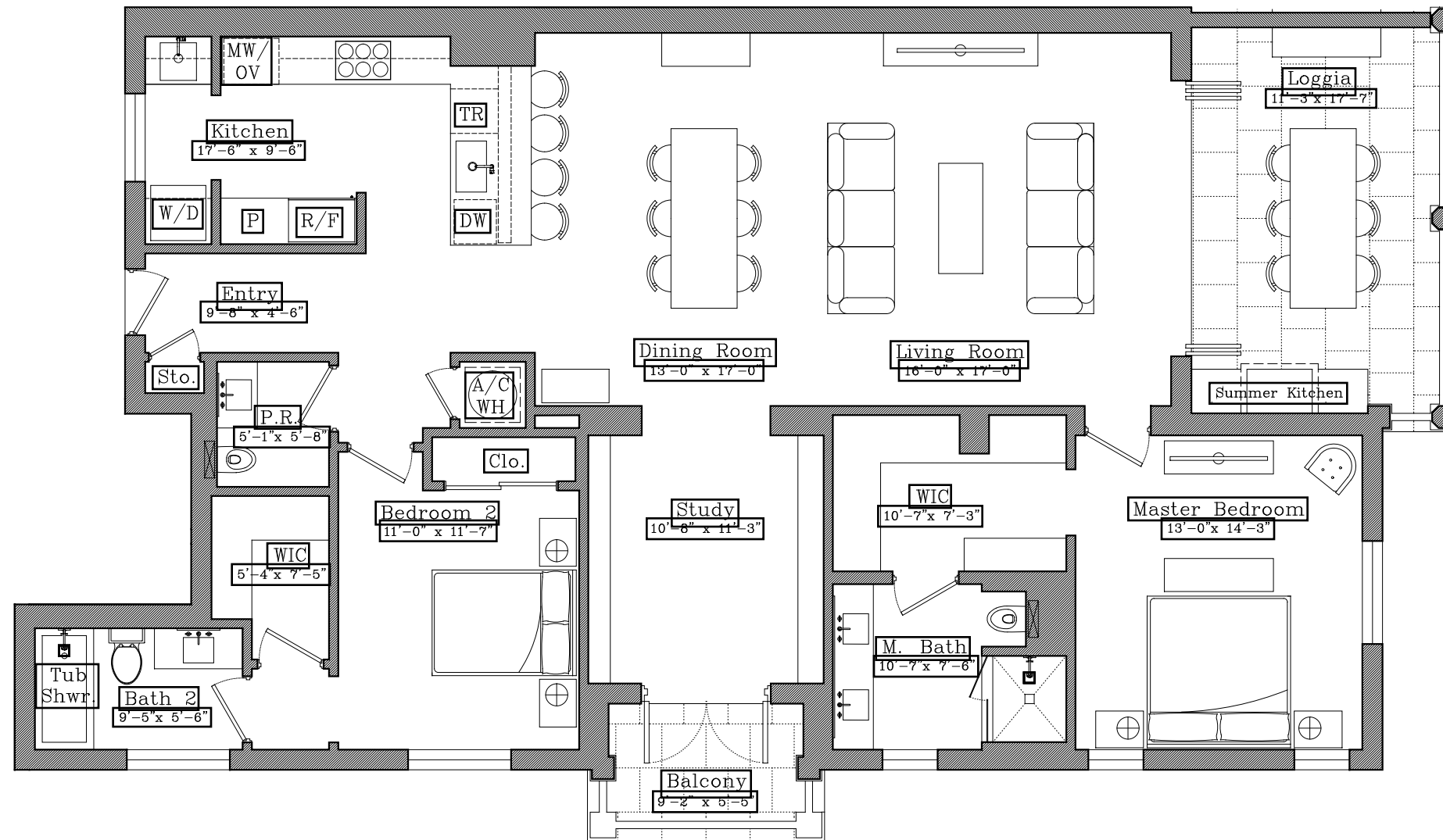
TOTAL RESIDENCE	<b>2,769 SF</b>
ADJUSTED AREA	2,152 SF



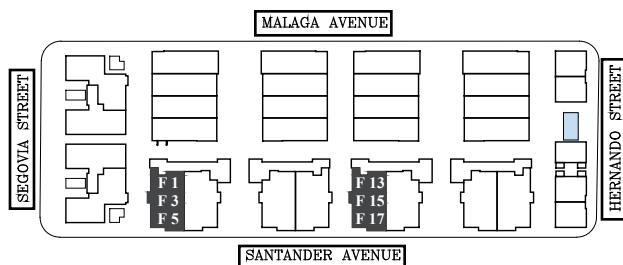
NTS



**THE VILLAGE**  
AT CORAL GABLES



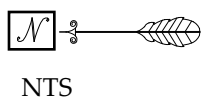
FLATS



F1-F3-F5  
F13-F15-F17

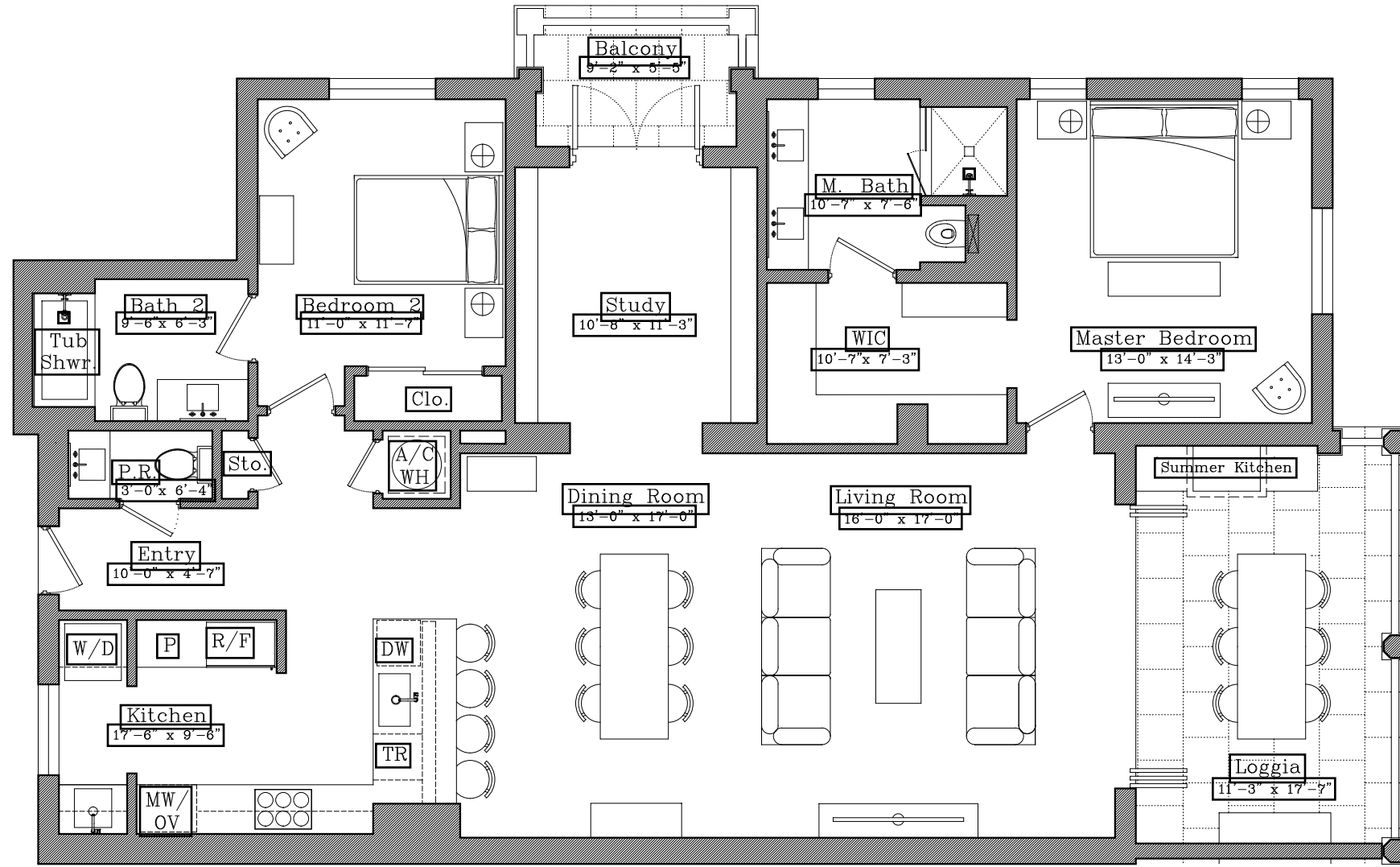
AC INTERIOR AREA 1,771 SF  
COVERED TERRACE 250 SF

TOTAL RESIDENCE  
**2,021 SF**  
ADJUSTED AREA 1,771 SF

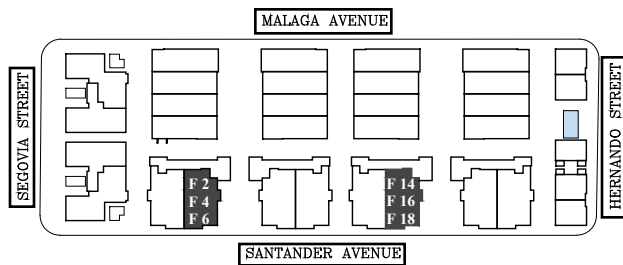




**THE VILLAGE**  
AT CORAL GABLES



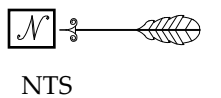
FLATS



F2-F4-F6  
F14-F16-F18

AC INTERIOR AREA 1,698 SF  
COVERED TERRACE 250 SF

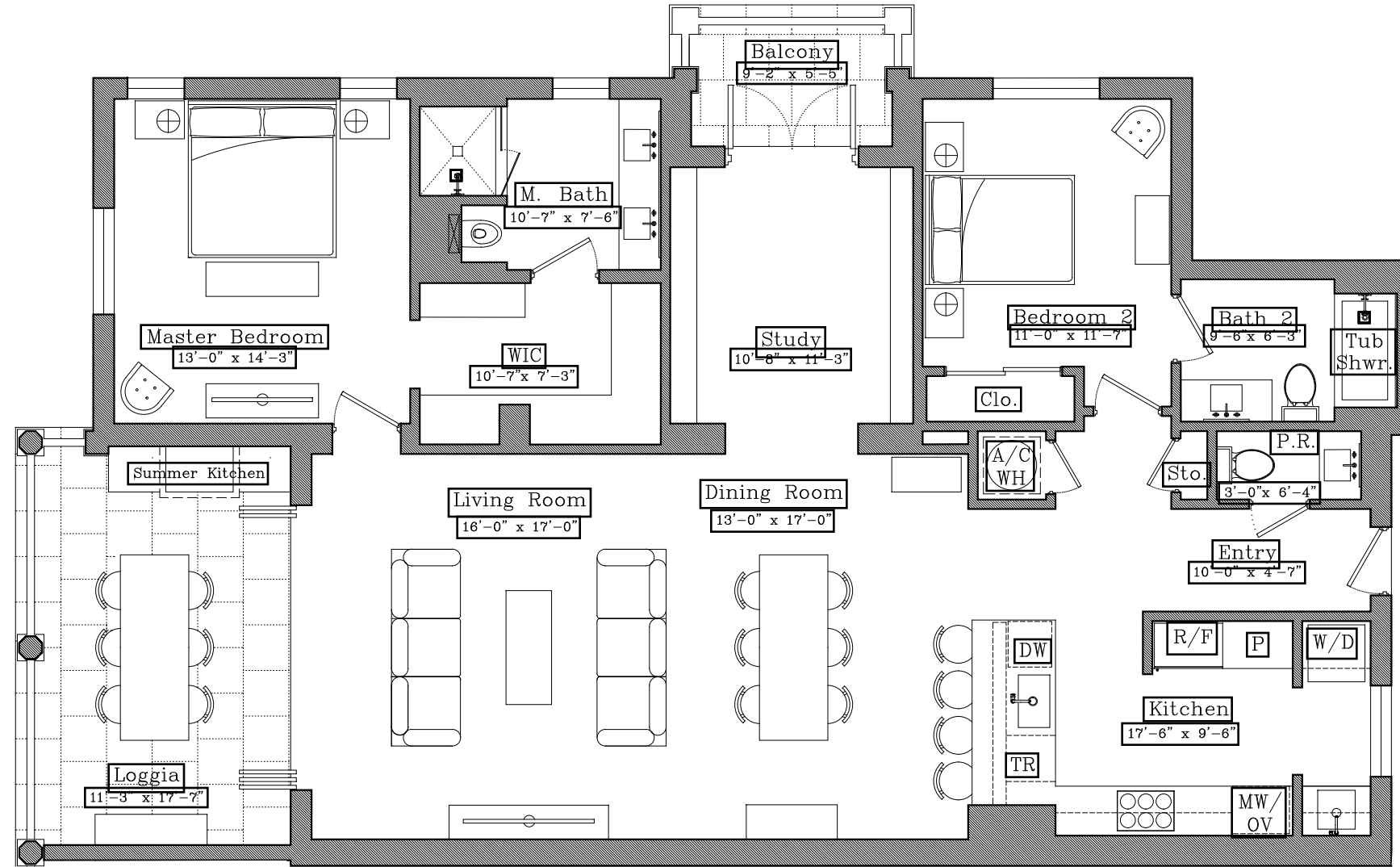
TOTAL RESIDENCE  
**1,948 SF**  
ADJUSTED AREA 1,698 SF



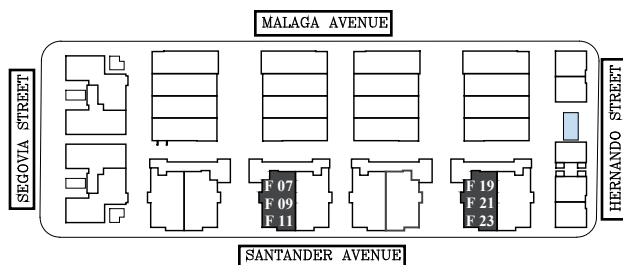




**THE VILLAGE**  
AT CORAL GABLES



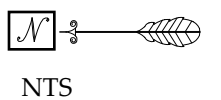
FLATS



F7-F9-F11  
F19-F21-F23

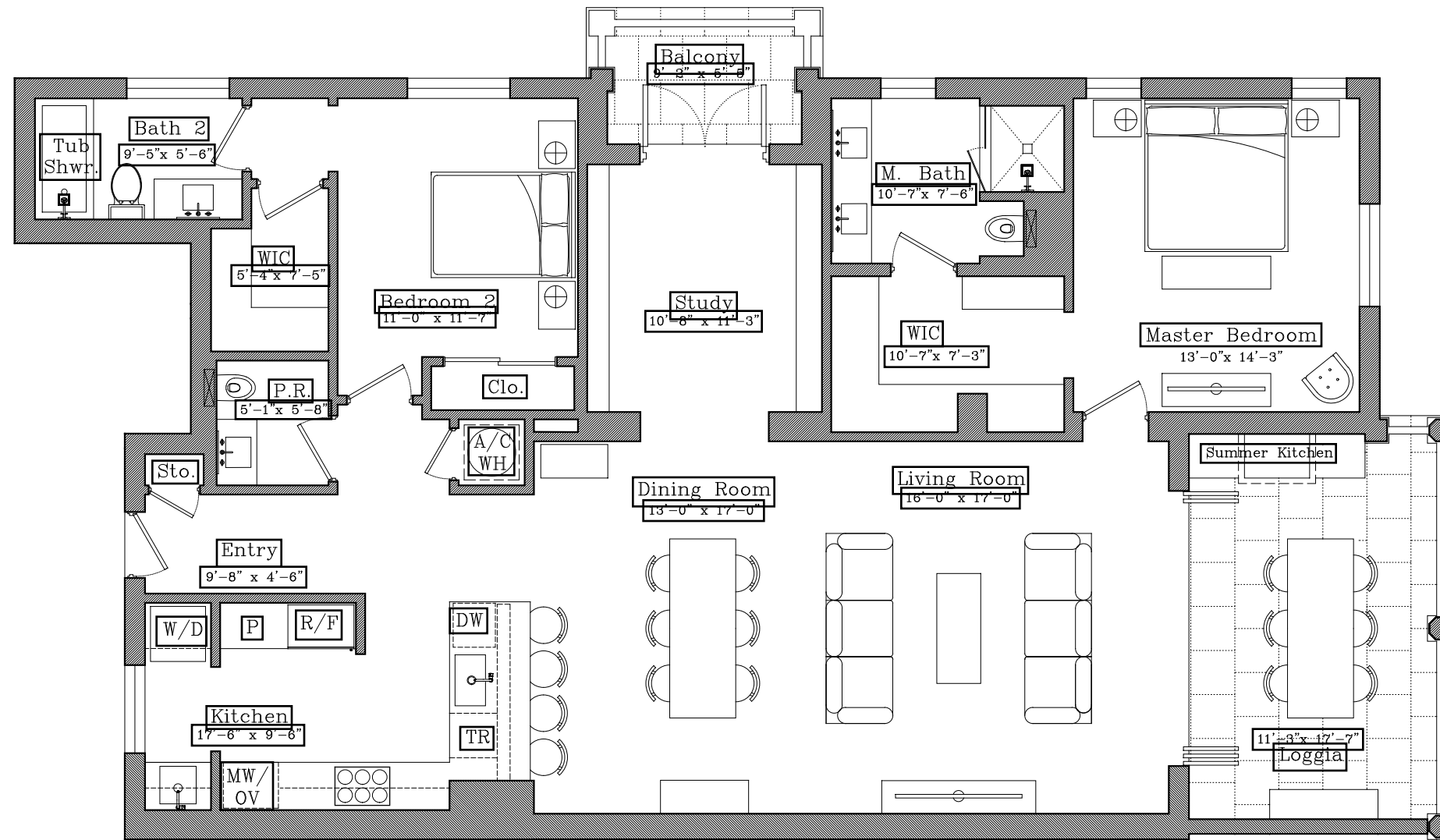
AC INTERIOR AREA 1,698 SF  
COVERED TERRACE 250 SF

TOTAL RESIDENCE  
**1,948 SF**  
ADJUSTED AREA 1,698 SF

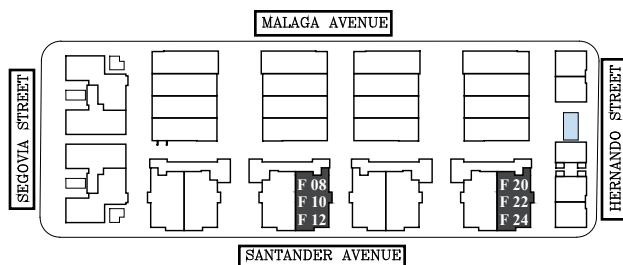




**THE VILLAGE**  
AT CORAL GABLES



FLATS



**F8-F10-F12**  
**F20-F22-F24**

AC INTERIOR AREA 1,771 SF  
COVERED TERRACE 250 SF

TOTAL RESIDENCE  
**2,021 SF**  
ADJUSTED AREA 1,771 SF

