

PIER SIXTY-SIX  
RESIDENCES

CONDO  
RESIDENCES

A

3 BEDROOMS  
3.5 BATHROOMS

Interior  
2,878 SQFT  
267.4 SM

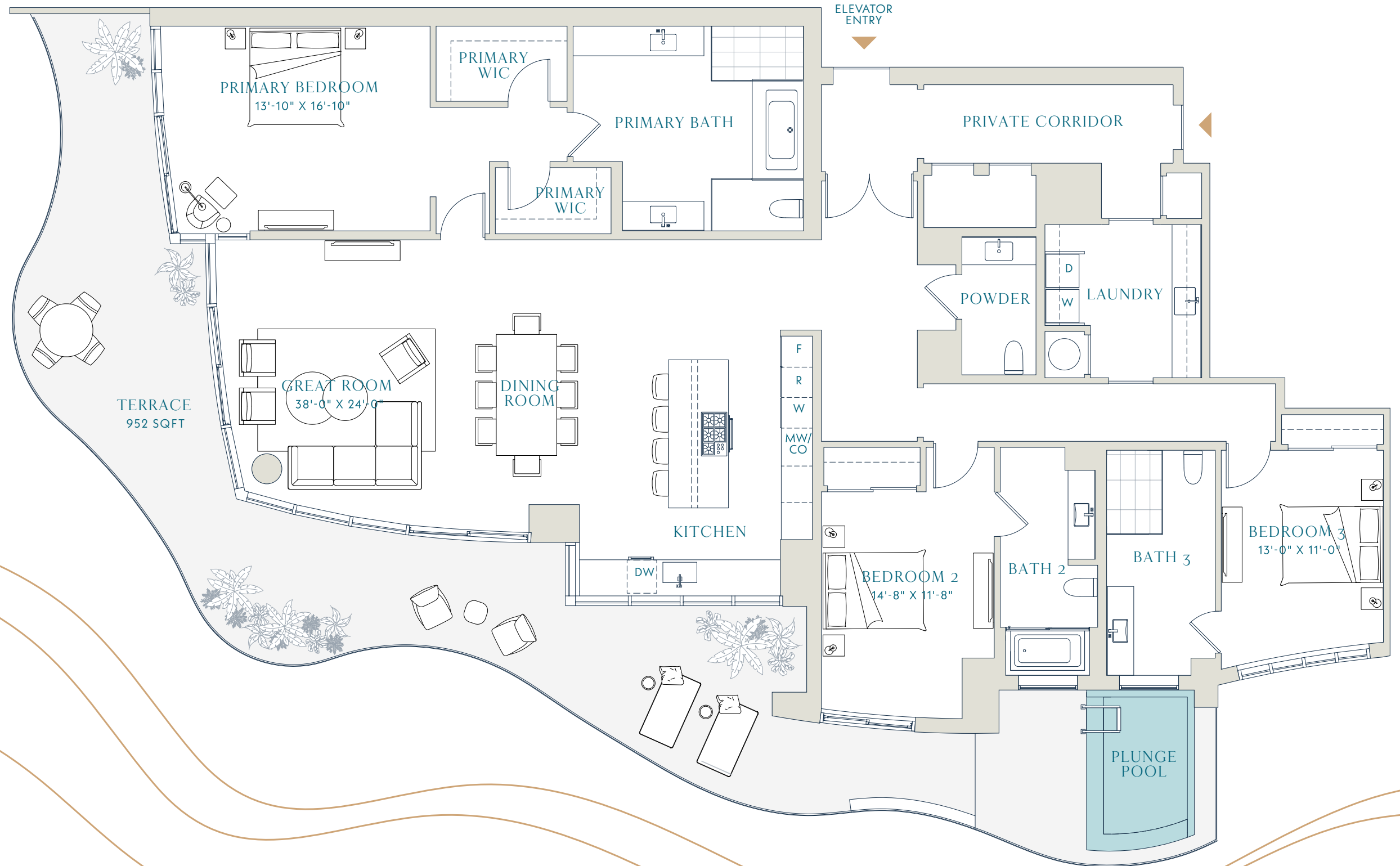
Terrace  
952 SQFT  
88.4 SM

Total  
3,830 SQFT  
355.8 SM



CONDO RESIDENCES

0' 3' 6' 12' 12'



WATER VIEW

Stated dimensions are measured to the exterior boundaries of the exterior walls and the centerline of interior demising walls (without deductions for interior columns, shear walls or shafts) and in fact vary from the dimensions that would be determined by using the description and definition of the "Unit" set forth in the Declaration (which generally only includes the interior airspace between the perimeter walls and excludes interior structural components, shear walls and shafts). For the calculation of the unit area following the definition of the unit set forth in the Declaration, see Exhibit "3" of the Declaration. Additionally, measurements of rooms set forth on any floor plan are generally taken at the greatest points of each given room (as if the room were a perfect rectangle), without regard for any cutouts. Accordingly, the area of the actual room will typically be smaller than the product obtained by multiplying the stated length times width. All dimensions are approximate, and all floor plans and development plans are subject to change. Brand and Marketing by Williams New York.

PIER SIXTY-SIX  
RESIDENCES

CONDO  
RESIDENCES

B

3 BEDROOMS  
3.5 BATHROOMS

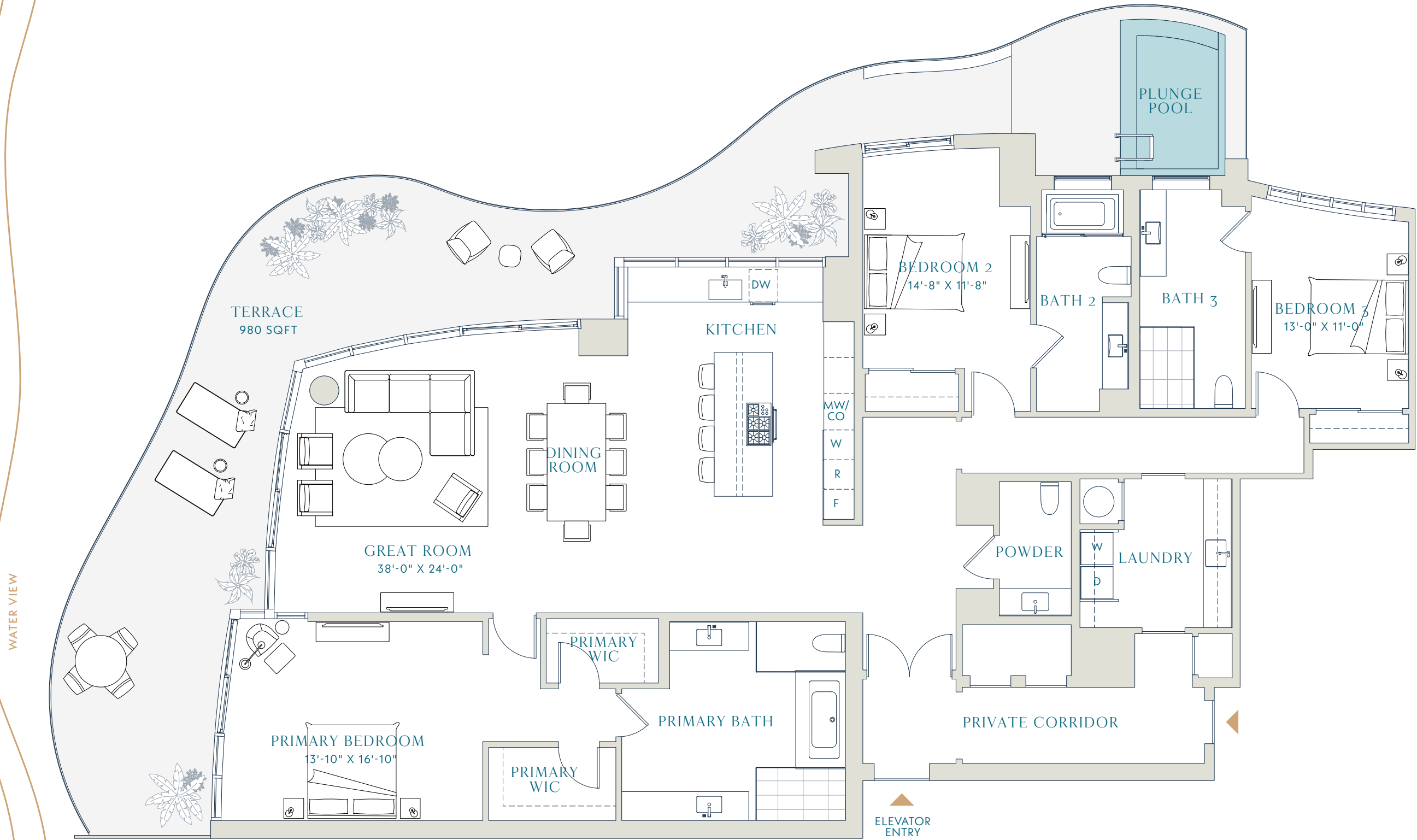
Interior  
2,878 SQFT  
267.4 SM

Terrace  
980 SQFT  
91 SM

Total  
3,858 SQFT  
358.4 SM



CONDO RESIDENCES



0' 3' 6' 12'

Stated dimensions are measured to the exterior boundaries of the exterior walls and the centerline of interior demising walls (without deductions for interior columns, shear walls or shafts) and in fact vary from the dimensions that would be determined by using the description and definition of the "Unit" set forth in the Declaration (which generally only includes the interior airspace between the perimeter walls and excludes interior structural components, shear walls and shafts). For the calculation of the unit area following the definition of the unit set forth in the Declaration, see Exhibit "3" of the Declaration. Additionally, measurements of rooms set forth on any floor plan are generally taken at the greatest points of each given room (as if the room were a perfect rectangle), without regard for any cutouts. Accordingly, the area of the actual room will typically be smaller than the product obtained by multiplying the stated length times width. All dimensions are approximate, and all floor plans and development plans are subject to change. Brand and Marketing by Williams New York.

PIER SIXTY-SIX  
RESIDENCES

CONDO  
RESIDENCES

C

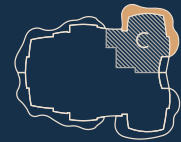
3 BEDROOMS  
3.5 BATHROOMS

Interior  
2,718 SQFT  
252.5 SM

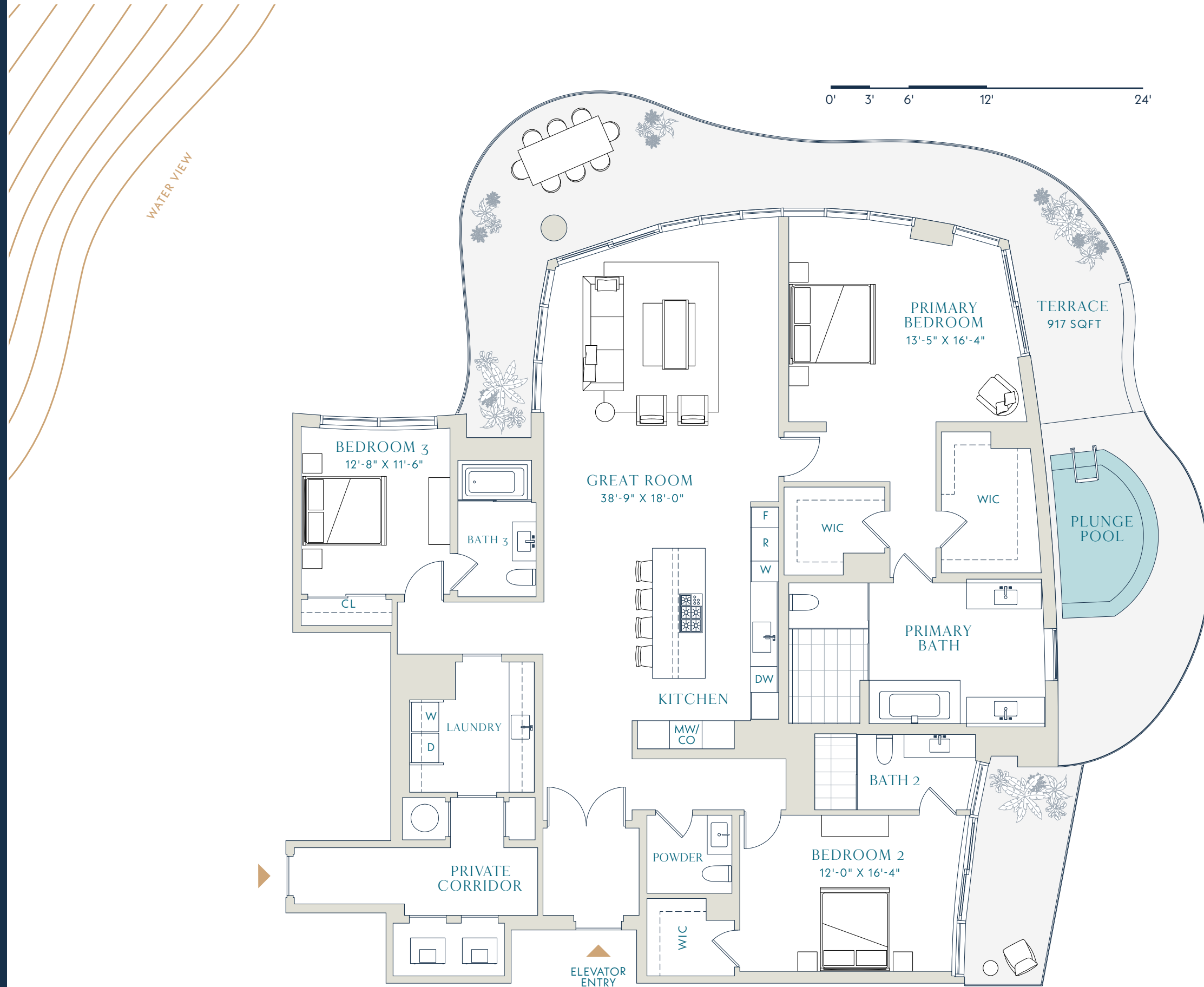
Terrace  
917 SQFT  
85.2 SM

Total  
3,635 SQFT  
337.7 SM

N



CONDO RESIDENCES



Stated dimensions are measured to the exterior boundaries of the exterior walls and the centerline of interior demising walls (without deductions for interior columns, shear walls or shafts) and in fact vary from the dimensions that would be determined by using the description and definition of the "Unit" set forth in the Declaration (which generally only includes the interior airspace between the perimeter walls and excludes interior structural components, shear walls and shafts). For the calculation of the unit area following the definition of the unit set forth in the Declaration, see Exhibit "3" of the Declaration. Additionally, measurements of rooms set forth on any floor plan are generally taken at the greatest points of each given room (as if the room were a perfect rectangle), without regard for any cutouts. Accordingly, the area of the actual room will typically be smaller than the product obtained by multiplying the stated length times width. All dimensions are approximate, and all floor plans and development plans are subject to change. Brand and Marketing by Williams New York.

PIER SIXTY-SIX  
RESIDENCES

RESORT  
RESIDENCES

E  
ALT

3 BEDROOMS  
3.5 BATHROOMS

Interior  
2,205 SQFT  
204.9 SM

Terrace  
828 SQFT  
77.0 SM

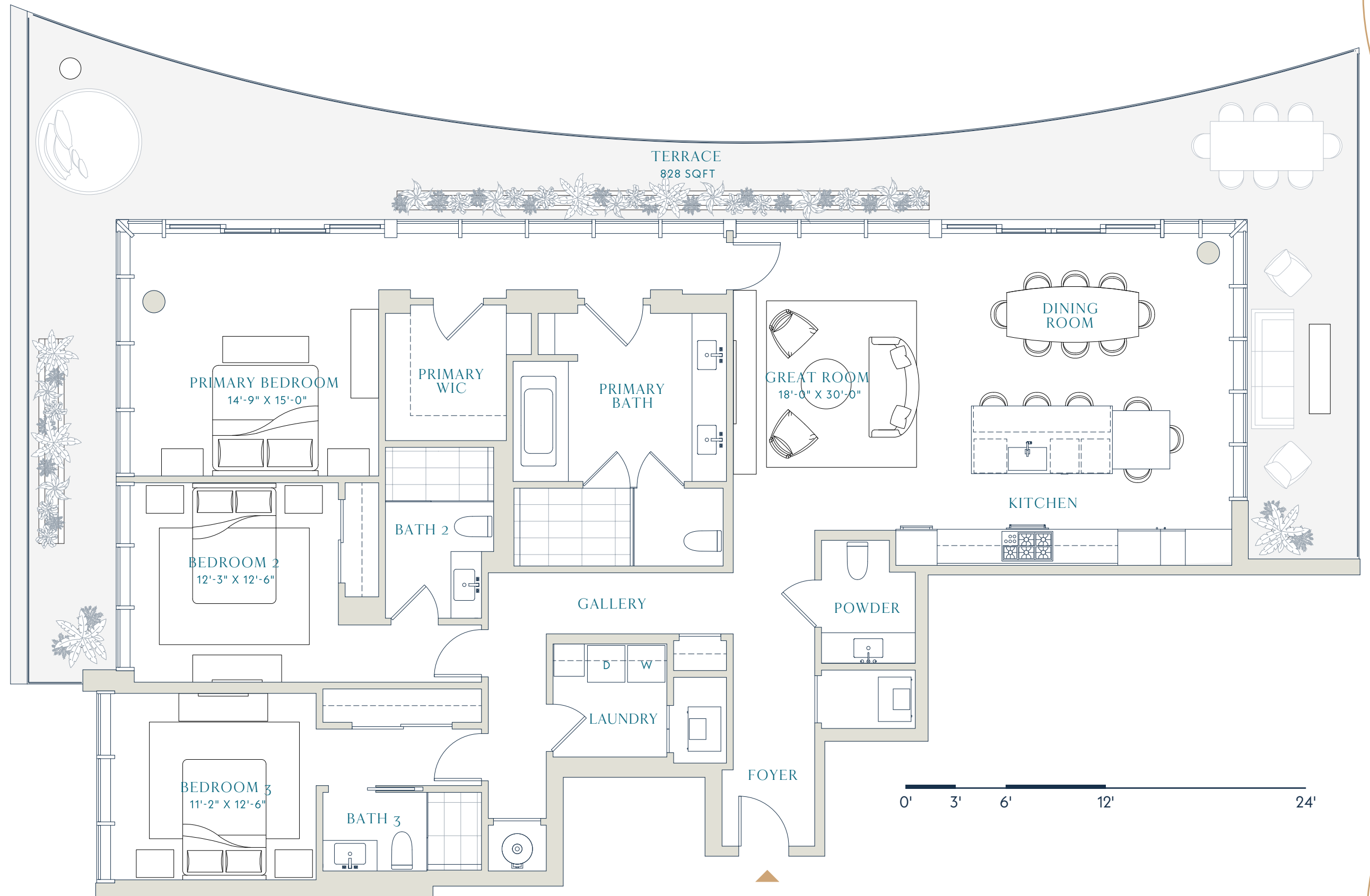
Total  
3,033 SQFT  
281.8 SM



RESORT  
RESIDENCE 1



RESORT  
RESIDENCE 2



Stated dimensions are measured to the exterior boundaries of the exterior walls and the centerline of interior demising walls (without deductions for interior columns, shear walls or shafts) and in fact vary from the dimensions that would be determined by using the description and definition of the "Unit" set forth in the Declaration (which generally only includes the interior airspace between the perimeter walls and excludes interior structural components, shear walls and shafts). For the calculation of the unit area following the definition of the unit set forth in the Declaration, see Exhibit "3" of the Declaration. Additionally, measurements of rooms set forth on any floor plan are generally taken at the greatest points of each given room (as if the room were a perfect rectangle), without regard for any cutouts. Accordingly, the area of the actual room will typically be smaller than the product obtained by multiplying the stated length times width. All dimensions are approximate, and all floor plans and development plans are subject to change. Brand and Marketing by Williams New York.

pier SIXTY-SIX  
RESIDENCES

RESORT  
RESIDENCES

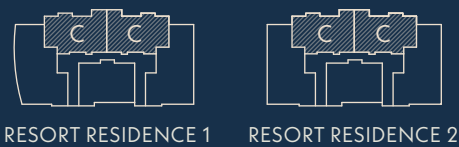
C

3 BEDROOMS  
3 BATHROOMS

Interior  
1,645 SQFT  
152.8 SM

Terrace  
86 SQFT  
8.0 SM

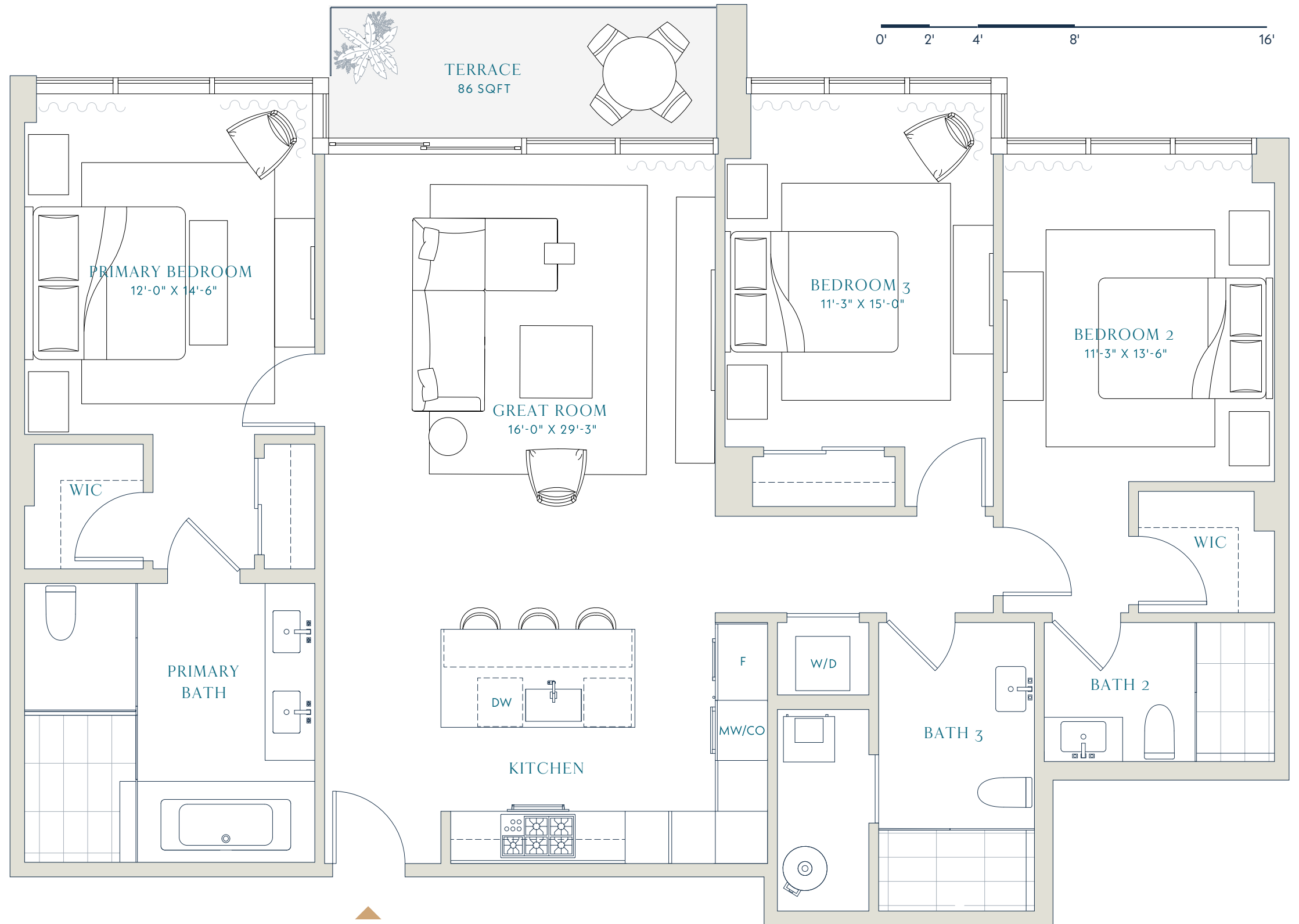
Total  
1,731 SQFT  
160.8 SM



RESORT RESIDENCE 1

RESORT RESIDENCE 2

WATER VIEW



Stated dimensions are measured to the exterior boundaries of the exterior walls and the centerline of interior demising walls (without deductions for interior columns, shear walls or shafts) and in fact vary from the dimensions that would be determined by using the description and definition of the "Unit" set forth in the Declaration (which generally only includes the interior airspace between the perimeter walls and excludes interior structural components, shear walls and shafts). For the calculation of the unit area following the definition of the unit set forth in the Declaration, see Exhibit "3" of the Declaration. Additionally, measurements of rooms set forth on any floor plan are generally taken at the greatest points of each given room (as if the room were a perfect rectangle), without regard for any cutouts. Accordingly, the area of the actual room will typically be smaller than the product obtained by multiplying the stated length times width. All dimensions are approximate, and all floor plans and development plans are subject to change. Brand and Marketing by Williams New York.

PIER SIXTY-SIX  
RESIDENCES

RESORT  
RESIDENCES

D

2 BEDROOMS  
FAMILY ROOM  
3 BATHROOMS

Interior  
1,738 SQFT  
161.5 SM

Terrace  
320 SQFT  
29.7 SM

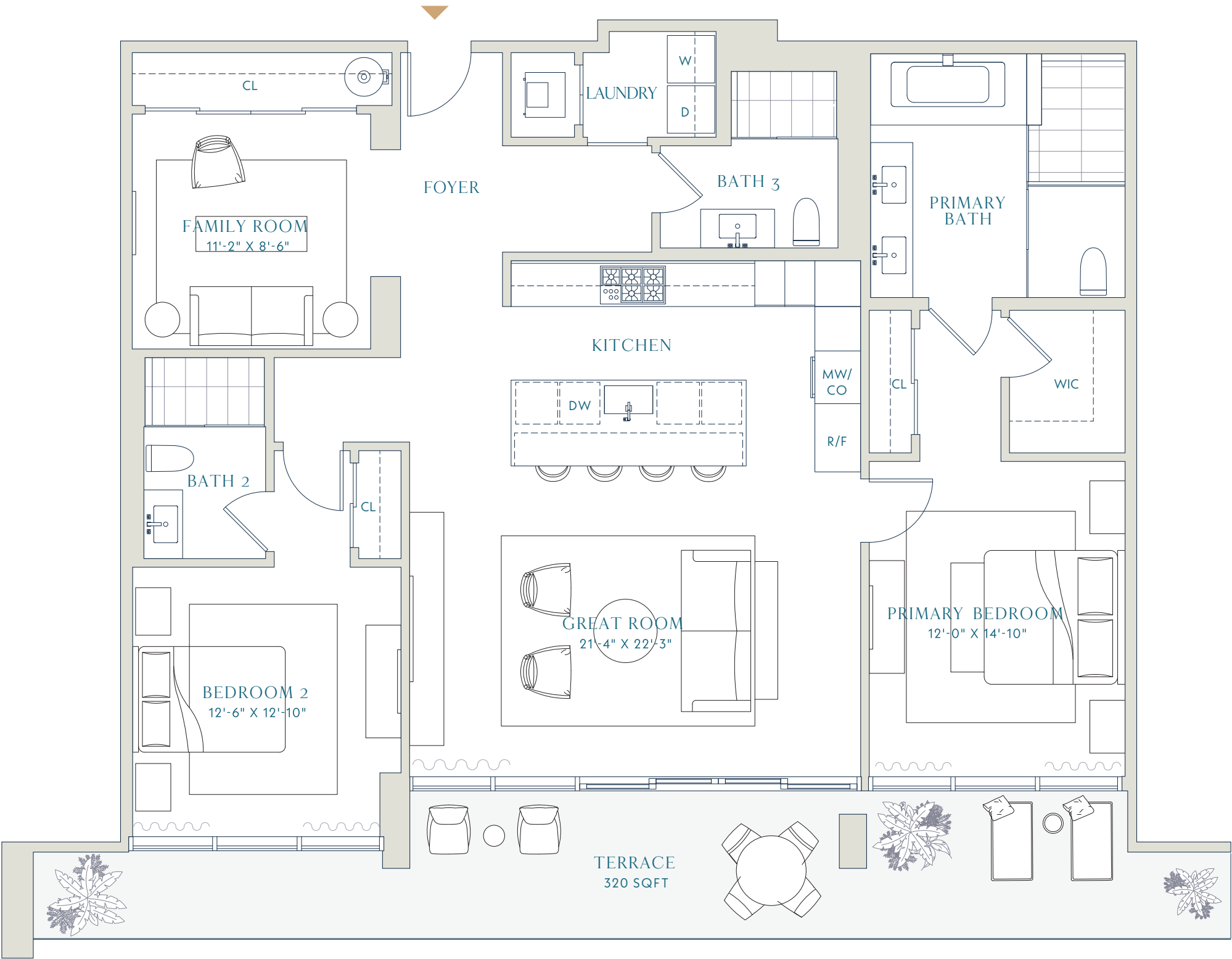
Total  
2,058 SQFT  
191.2 SM



RESORT RESIDENCE 1



RESORT RESIDENCE 2



0' 2' 4' 8' 16'

Stated dimensions are measured to the exterior boundaries of the exterior walls and the centerline of interior demising walls (without deductions for interior columns, shear walls or shafts) and in fact vary from the dimensions that would be determined by using the description and definition of the "Unit" set forth in the Declaration (which generally only includes the interior airspace between the perimeter walls and excludes interior structural components, shear walls and shafts). For the calculation of the unit area following the definition of the unit set forth in the Declaration, see Exhibit "3" of the Declaration. Additionally, measurements of rooms set forth on any floor plan are generally taken at the greatest points of each given room (as if the room were a perfect rectangle), without regard for any cutouts. Accordingly, the area of the actual room will typically be smaller than the product obtained by multiplying the stated length times width. All dimensions are approximate, and all floor plans and development plans are subject to change. Brand and Marketing by Williams New York.