

888 Brickell Avenue

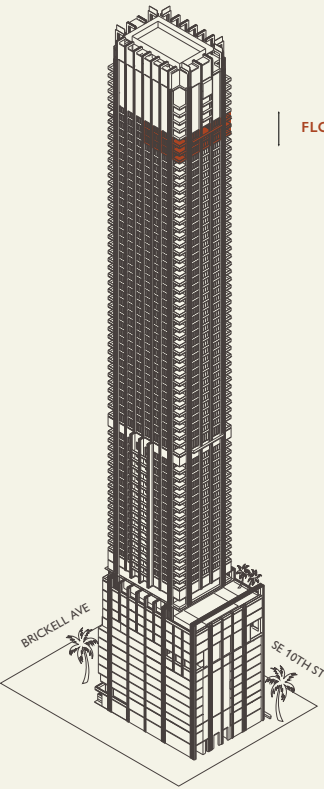
MIAMI FLORIDA

Biscayne Bay

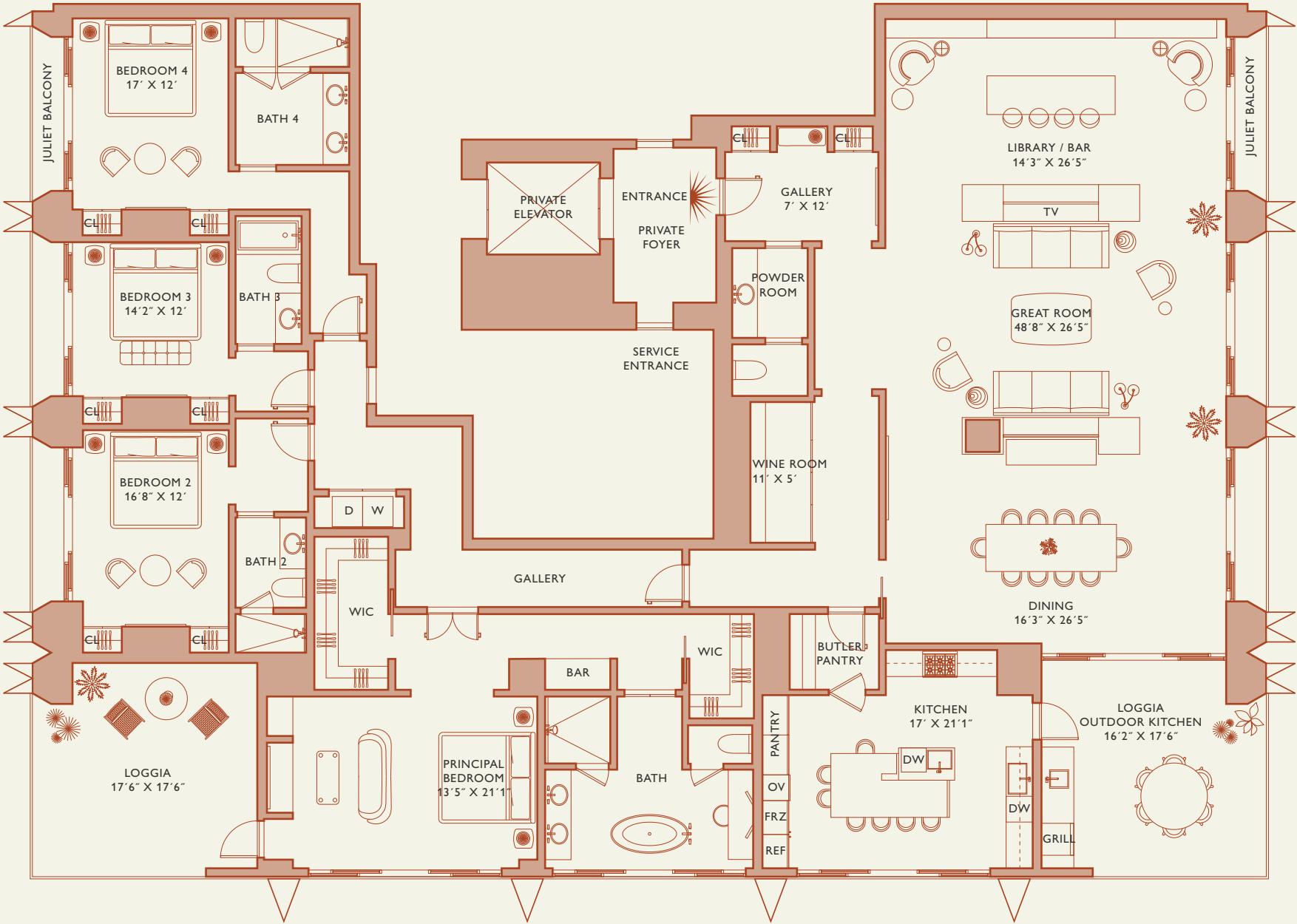
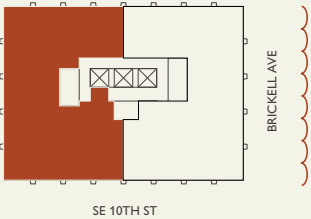
Penthouse B

FLOOR 83 – 86

Rooms	Square Footages	Features
4 Bedrooms	Indoor: 4,685 SQF	888 Half Floor Residence
4 Bathrooms	Outdoor: 735 SQF	Furniture by Studio Sofield
Powder Room	Total: 5,420 SQF	11' Ceiling Height
		6 Juliet Balconies
		2 Loggias & Outdoor Kitchen
		Views: North West to South West



FLOORS 83 - 86



Stated dimensions are measured to the exterior boundaries of the exterior walls and the centerline of interior demising walls and in fact vary from the dimensions that would be determined by using the description and definition of the "Unit" set forth in the Declaration (which generally only includes the interior airspace between the perimeter walls and excludes interior structural components). For your reference, the area of the Unit, determined in accordance with those defined unit boundaries, is set forth on Exhibit "3" to the Declaration of Condominium. Note that measurements of rooms set forth on this floor plan are generally taken at the greatest points of each given room (as if the room were a perfect rectangle), without regard for any cutouts. Accordingly, the area of the actual room will typically be smaller than the product obtained by multiplying the stated length times width. All dimensions are approximate and may vary with actual construction, and all floor plans and development plans are subject to change.

888 Brickell Avenue

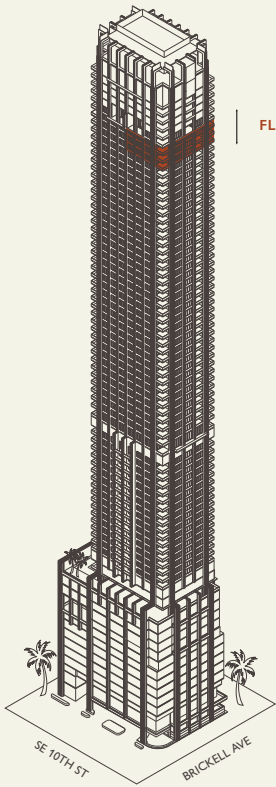
MIAMI FLORIDA

Biscayne Bay

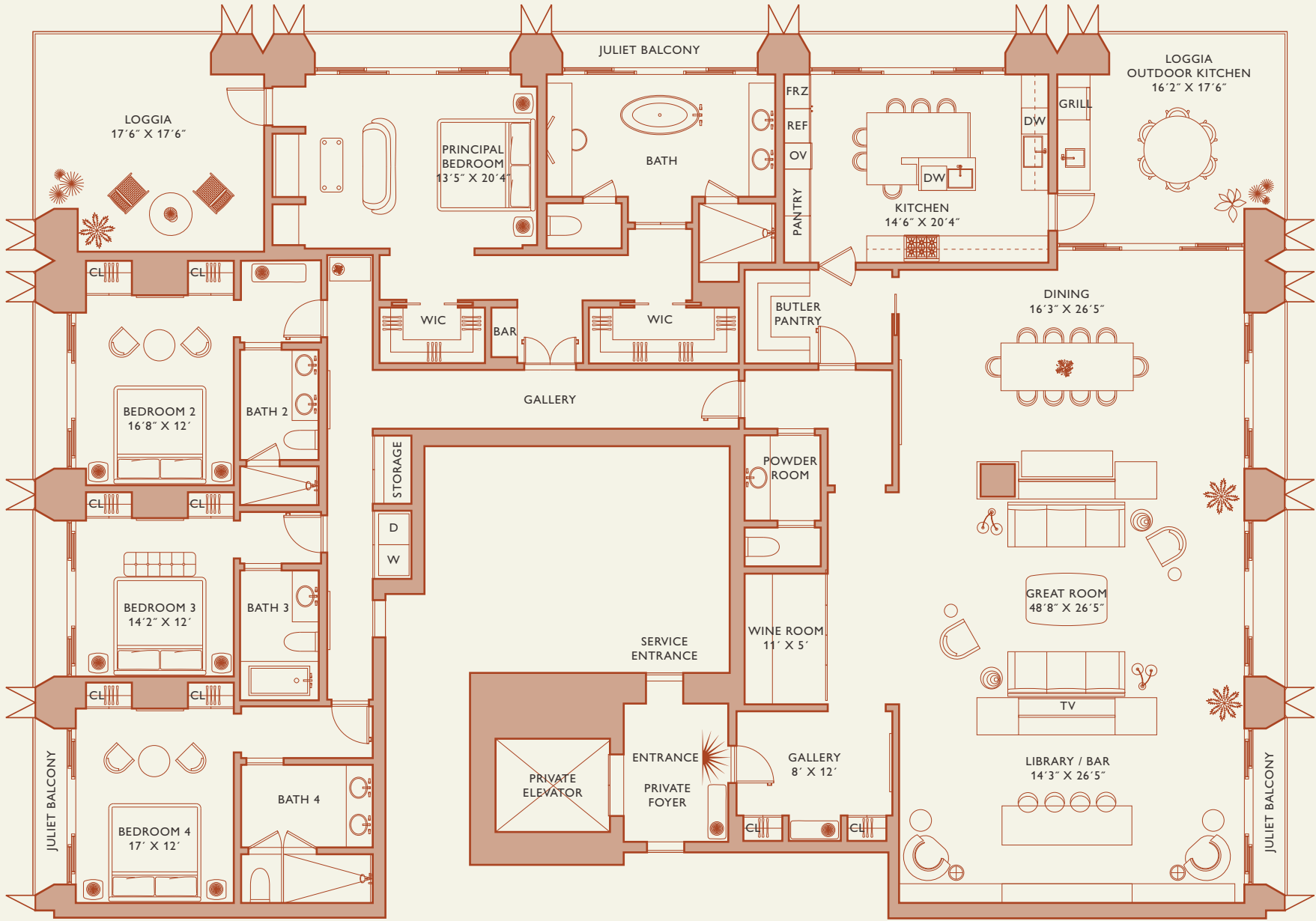
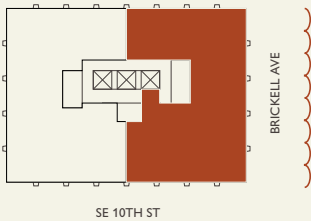
Penthouse A

FLOOR 83 – 86

Rooms	Square Footages	Features
4 Bedrooms	Indoor: 4,855 SQF	888 Half Floor Residence
4 Bathrooms	Outdoor: 780 SQF	Furniture by Studio Sofield
Powder Room	Total: 5,635 SQF	11' Ceiling Height
		9 Juliet Balconies
		2 Loggias & Outdoor Kitchen
		Views: North East to South East



FLOORS 83 - 86



Stated dimensions are measured to the exterior boundaries of the exterior walls and the centerline of interior demising walls and in fact vary from the dimensions that would be determined by using the description and definition of the "Unit" set forth in the Declaration (which generally only includes the interior airspace between the perimeter walls and excludes interior structural components). For your reference, the area of the Unit, determined in accordance with those defined unit boundaries, is set forth on Exhibit "3" to the Declaration of Condominium. Note that measurements of rooms set forth on this floor plan are generally taken at the greatest points of each given room (as if the room were a perfect rectangle), without regard for any cutouts. Accordingly, the area of the actual room will typically be smaller than the product obtained by multiplying the stated length times width. All dimensions are approximate and may vary with actual construction, and all floor plans and development plans are subject to change.



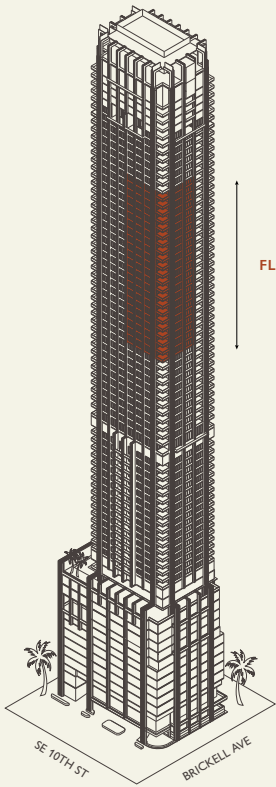
888 Brickell Avenue

MIAMI FLORIDA

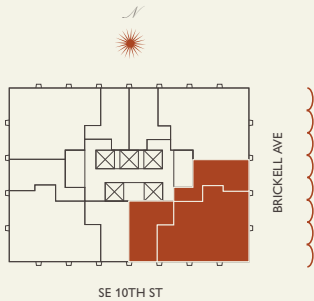
Residence A

FLOOR 55-77

Rooms	Square Footages	Features
3 Bedrooms	Indoor: 2,875 SQF	888 Suite & 888 Rooms
3 Bathrooms	Outdoor: 435 SQF	Furniture by Studio Sofield
Powder Room	Total: 3,310 SQF	11' Ceiling Height
		5 Juliet Balconies
		Loggia & Outdoor Kitchen
		Views: South East



FLOORS 55 - 77

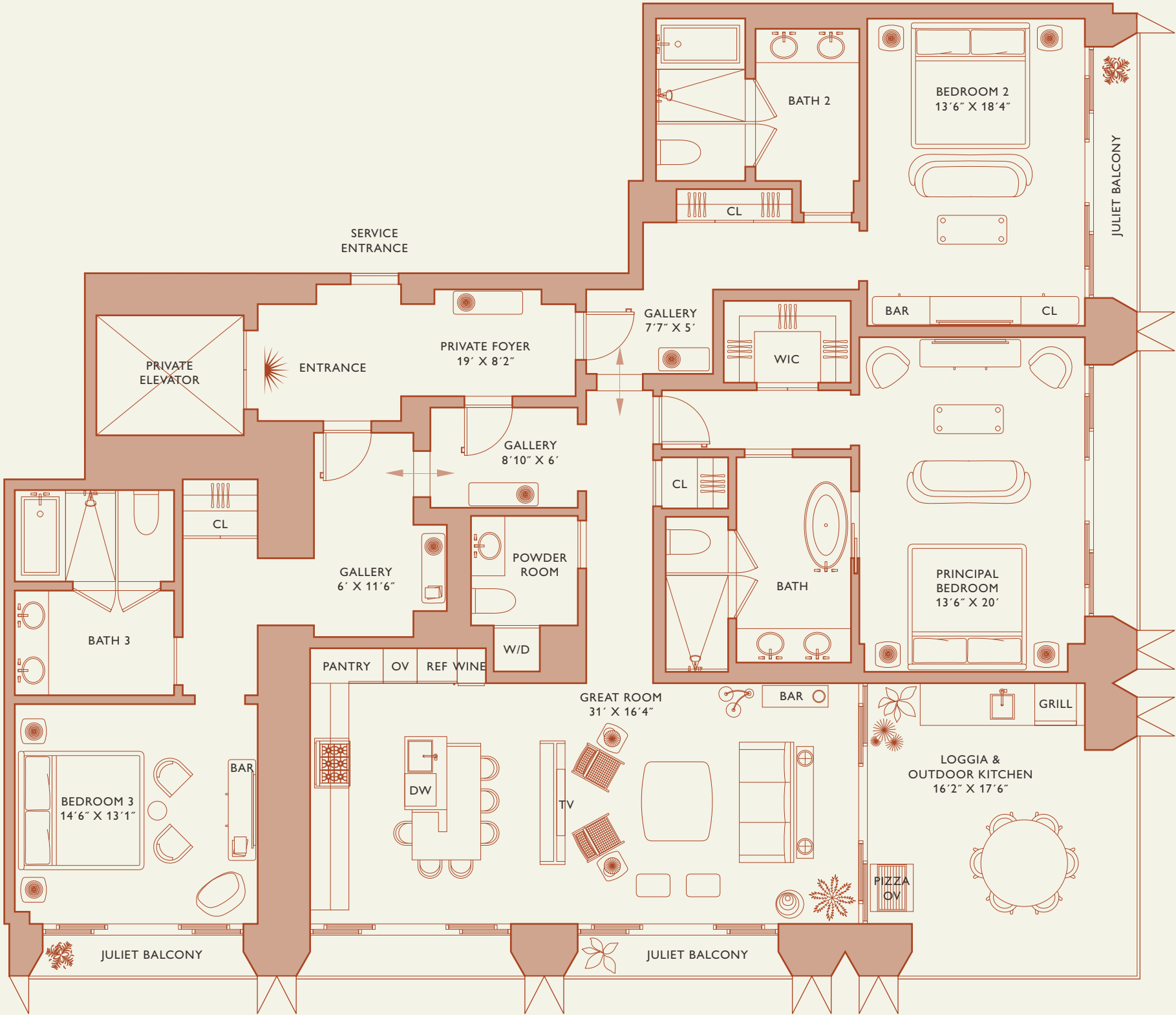


Stated dimensions are measured to the exterior boundaries of the exterior walls and the centerline of interior demising walls and in fact vary from the dimensions that would be determined by using the description and definition of the "Unit" set forth in the Declaration (which generally only includes the interior airspace between the perimeter walls and excludes interior structural components). For your reference, the area of the Unit, determined in accordance with those defined unit boundaries, is set forth on Exhibit "3" to the Declaration of Condominium. Note that measurements of rooms set forth on this floor plan are generally taken at the greatest points of each given room (as if the room were a perfect rectangle), without regard for any cutouts. Accordingly, the area of the actual room will typically be smaller than the product obtained by multiplying the stated length times width. All dimensions are approximate and may vary with actual construction, and all floor plans and development plans are subject to change.



JDS DEVELOPMENT GROUP

INFO@888MIAMI.COM



Biscayne Bay

888 Residence



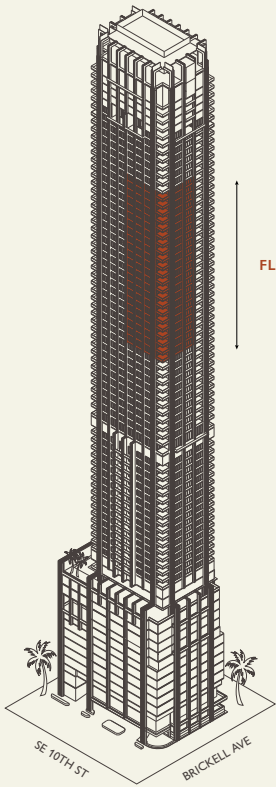
888 Brickell Avenue

MIAMI FLORIDA

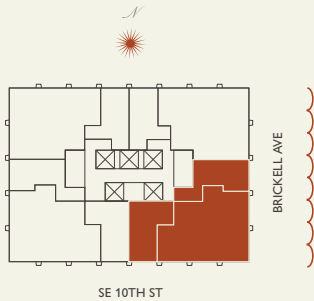
Residence A

FLOOR 55-77

Rooms	Square Footages	Features
3 Bedrooms	Indoor: 2,875 SQF	888 Suite & 888 Rooms
3 Bathrooms	Outdoor: 435 SQF	Furniture by Studio Sofield
Powder Room	Total: 3,310 SQF	11' Ceiling Height
		5 Juliet Balconies
		Loggia & Outdoor Kitchen
		Views: South East



FLOORS 55 - 77

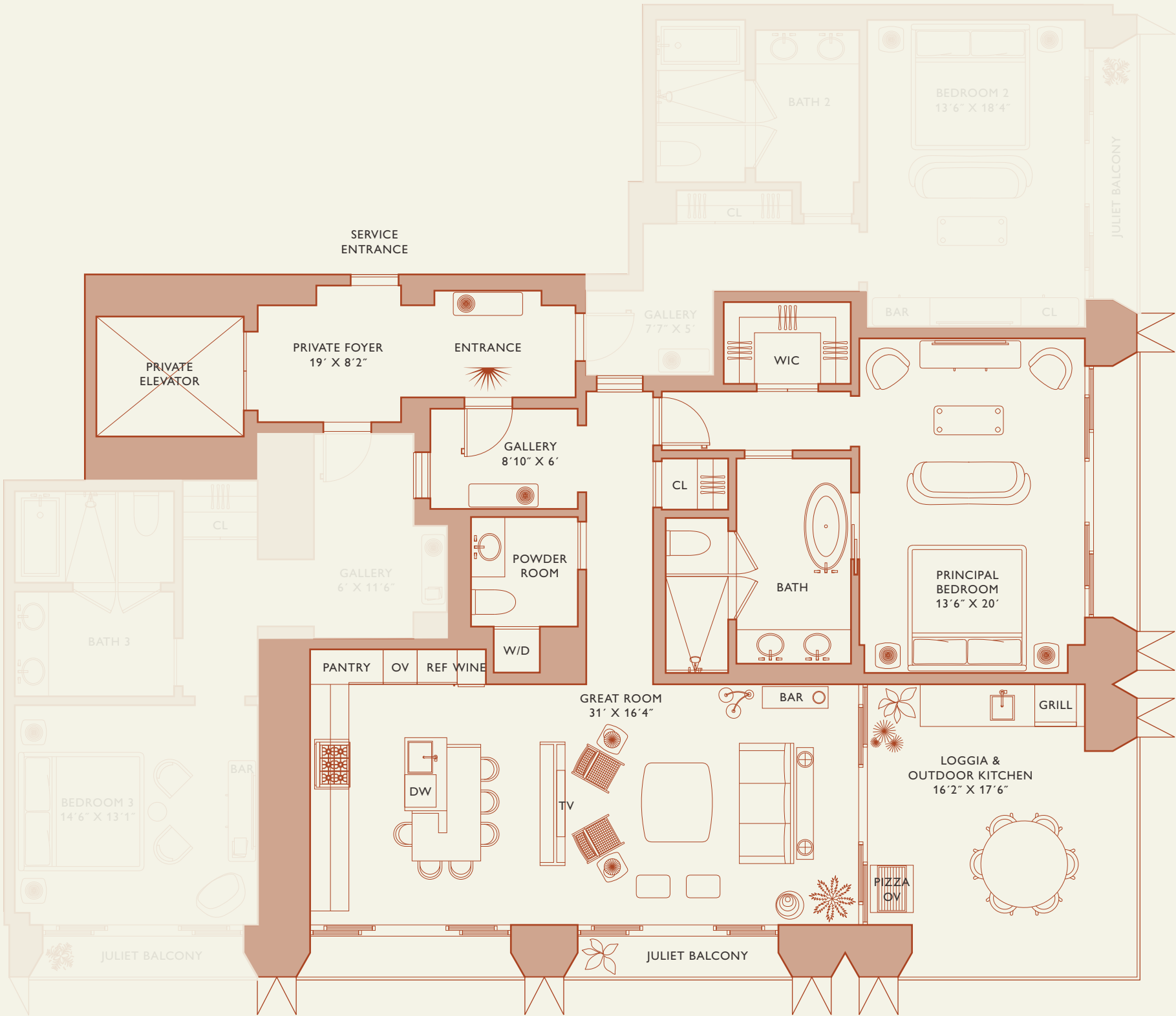


Stated dimensions are measured to the exterior boundaries of the exterior walls and the centerline of interior demising walls and in fact vary from the dimensions that would be determined by using the description and definition of the "Unit" set forth in the Declaration (which generally only includes the interior airspace between the perimeter walls and excludes interior structural components). For your reference, the area of the Unit, determined in accordance with those defined unit boundaries, is set forth on Exhibit "3" to the Declaration of Condominium. Note that measurements of rooms set forth on this floor plan are generally taken at the greatest points of each given room (as if the room were a perfect rectangle), without regard for any cutouts. Accordingly, the area of the actual room will typically be smaller than the product obtained by multiplying the stated length times width. All dimensions are approximate and may vary with actual construction, and all floor plans and development plans are subject to change.



JDS DEVELOPMENT GROUP

INFO@888MIAMI.COM



Biscayne Bay

888 Suite



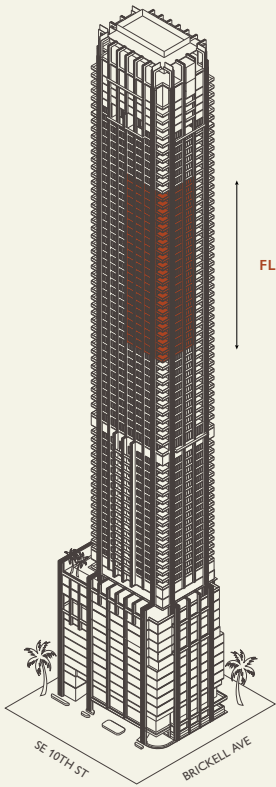
888 Brickell Avenue

MIAMI FLORIDA

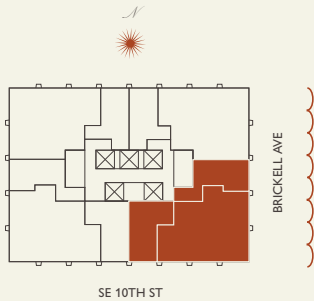
Residence A

FLOOR 55-77

Rooms	Square Footages	Features
3 Bedrooms	Indoor: 2,875 SQF	888 Suite & 888 Rooms
3 Bathrooms	Outdoor: 435 SQF	Furniture by Studio Sofield
Powder Room	Total: 3,310 SQF	11' Ceiling Height
		5 Juliet Balconies
		Loggia & Outdoor Kitchen
		Views: South East



FLOORS 55 - 77

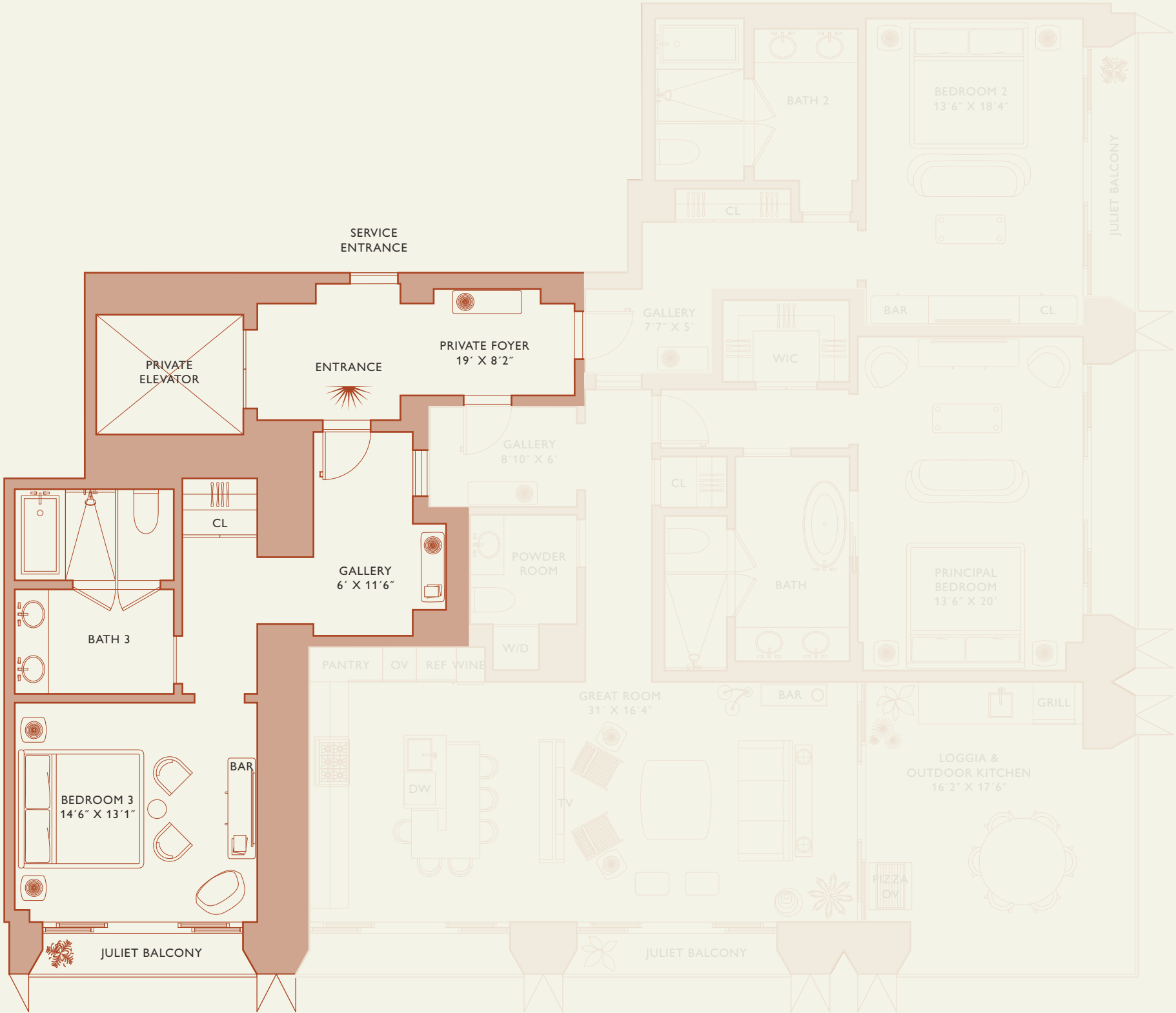


Stated dimensions are measured to the exterior boundaries of the exterior walls and the centerline of interior demising walls and in fact vary from the dimensions that would be determined by using the description and definition of the "Unit" set forth in the Declaration (which generally only includes the interior airspace between the perimeter walls and excludes interior structural components). For your reference, the area of the Unit, determined in accordance with those defined unit boundaries, is set forth on Exhibit "3" to the Declaration of Condominium. Note that measurements of rooms set forth on this floor plan are generally taken at the greatest points of each given room (as if the room were a perfect rectangle), without regard for any cutouts. Accordingly, the area of the actual room will typically be smaller than the product obtained by multiplying the stated length times width. All dimensions are approximate and may vary with actual construction, and all floor plans and development plans are subject to change.



JDS DEVELOPMENT GROUP

INFO@888MIAMI.COM



888 Room 1



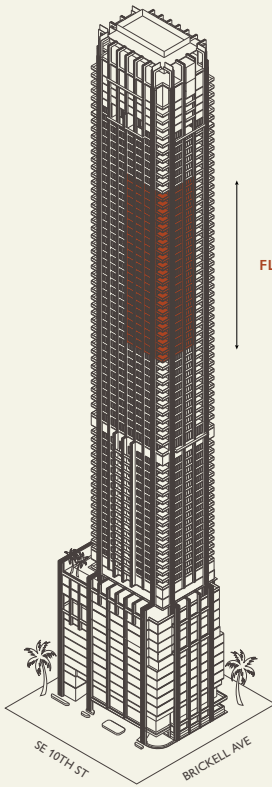
888 Brickell Avenue

MIAMI FLORIDA

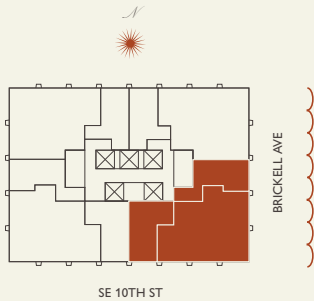
Residence A

FLOOR 55-77

Rooms	Square Footages	Features
3 Bedrooms	Indoor: 2,875 SQF	888 Suite & 888 Rooms
3 Bathrooms	Outdoor: 435 SQF	Furniture by Studio Sofield
Powder Room	Total: 3,310 SQF	11' Ceiling Height
		5 Juliet Balconies
		Loggia & Outdoor Kitchen
		Views: South East



FLOORS 55 - 77



Stated dimensions are measured to the exterior boundaries of the exterior walls and the centerline of interior demising walls and in fact vary from the dimensions that would be determined by using the description and definition of the "Unit" set forth in the Declaration (which generally only includes the interior airspace between the perimeter walls and excludes interior structural components). For your reference, the area of the Unit, determined in accordance with those defined unit boundaries, is set forth on Exhibit "3" to the Declaration of Condominium. Note that measurements of rooms set forth on this floor plan are generally taken at the greatest points of each given room (as if the room were a perfect rectangle), without regard for any cutouts. Accordingly, the area of the actual room will typically be smaller than the product obtained by multiplying the stated length times width. All dimensions are approximate and may vary with actual construction, and all floor plans and development plans are subject to change.



JDS DEVELOPMENT GROUP

INFO@888MIAMI.COM



Biscayne Bay

888 Room 2



888 Brickell Avenue

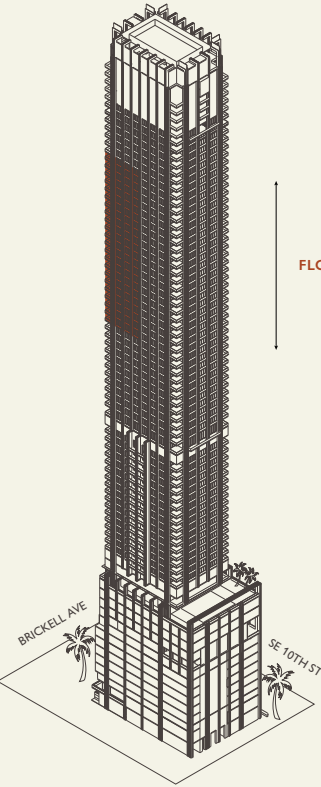
MIAMI FLORIDA



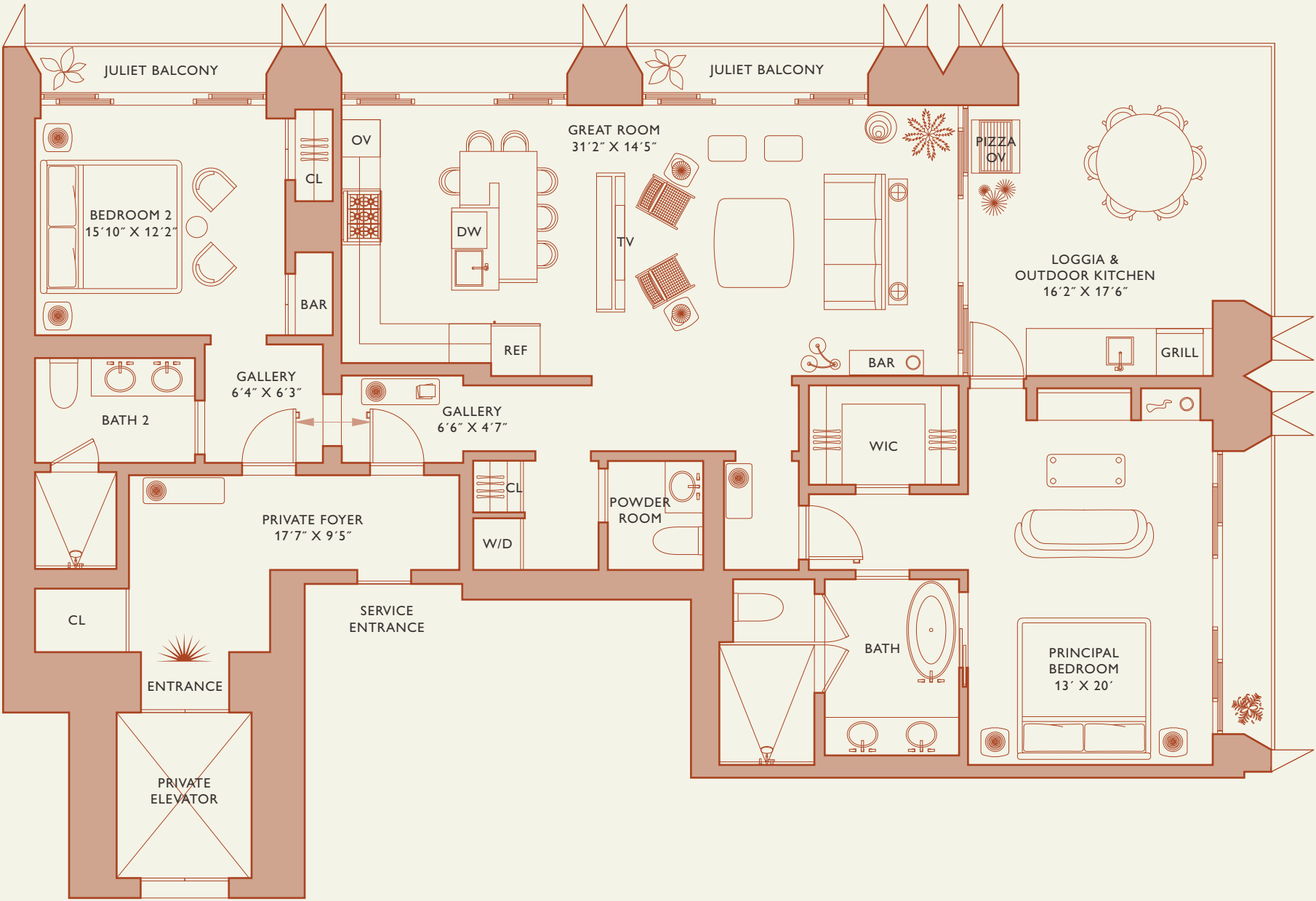
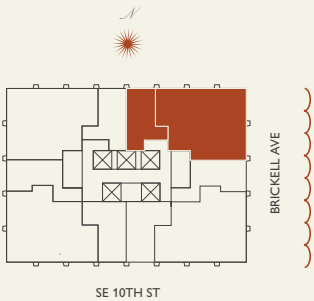
Residence B

FLOOR 55-77

Rooms	Square Footages	Features
2 Bedrooms	Indoor: 2,015 SQF	888 Suite & 888 Room
2 Bathrooms	Outdoor: 395 SQF	Furniture by Studio Sofield
Powder Room	Total: 2,410 SQF	11' Ceiling Height
		3 Juliet Balconies
		Loggia & Outdoor Kitchen
		Views: North East



FLOORS 55 - 77



Biscayne Bay

Stated dimensions are measured to the exterior boundaries of the exterior walls and the centerline of interior demising walls and in fact vary from the dimensions that would be determined by using the description and definition of the "Unit" set forth in the Declaration (which generally only includes the interior airspace between the perimeter walls and excludes interior structural components). For your reference, the area of the Unit, determined in accordance with those defined unit boundaries, is set forth on Exhibit "3" to the Declaration of Condominium. Note that measurements of rooms set forth on this floor plan are generally taken at the greatest points of each given room (as if the room were a perfect rectangle), without regard for any cutouts. Accordingly, the area of the actual room will typically be smaller than the product obtained by multiplying the stated length times width. All dimensions are approximate and may vary with actual construction, and all floor plans and development plans are subject to change.



JDS DEVELOPMENT GROUP

INFO@888MIAMI.COM

888 Residence



888 Brickell Avenue

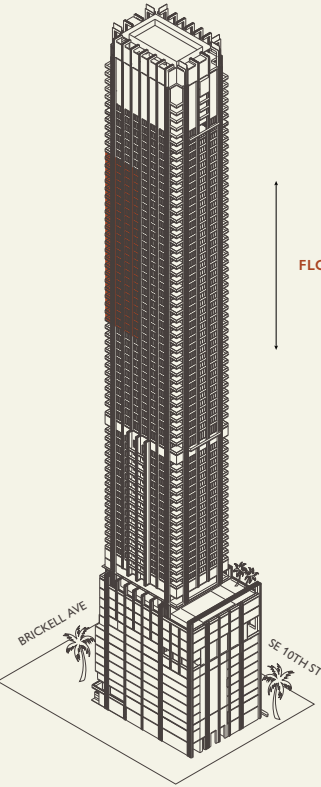
MIAMI FLORIDA



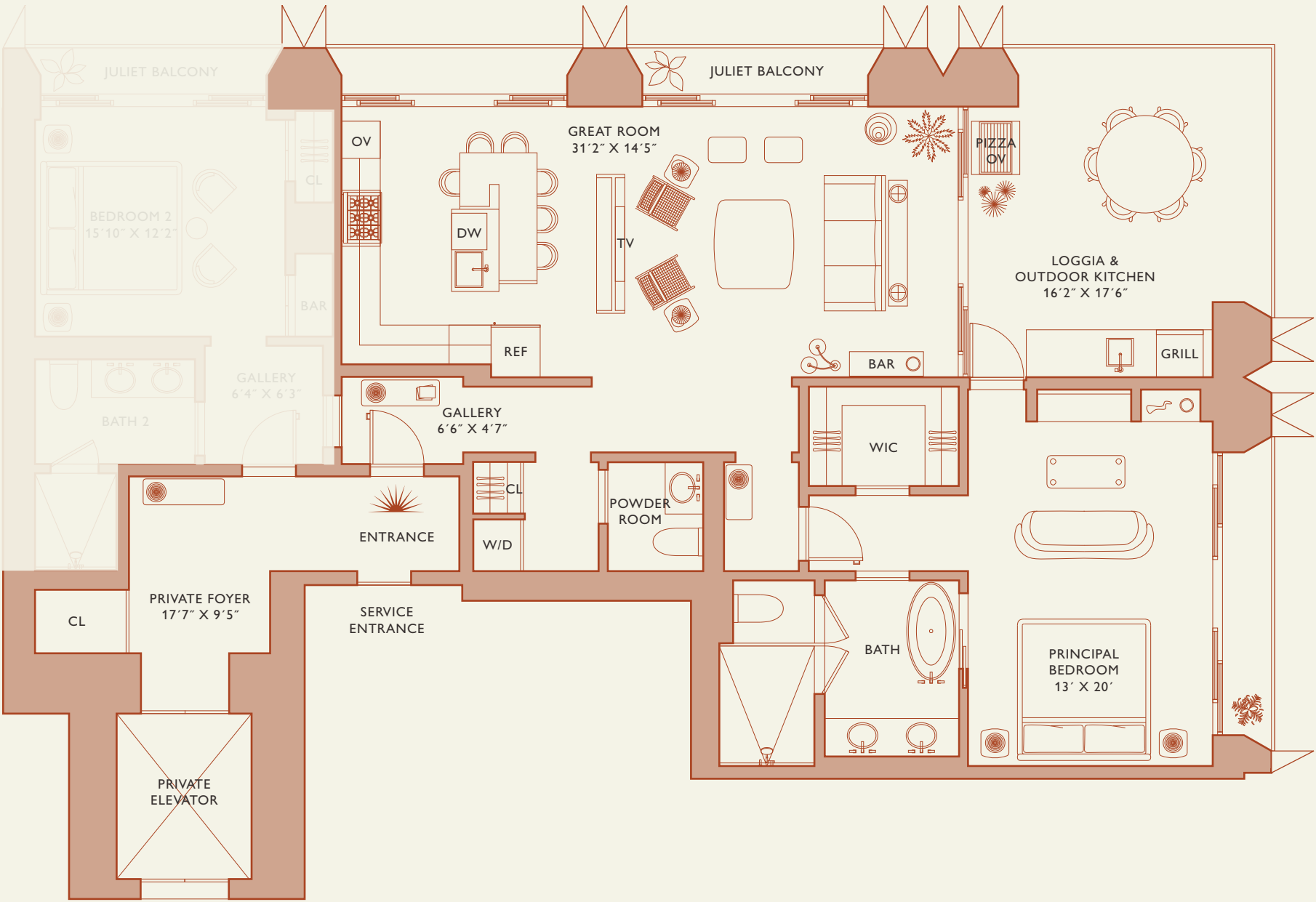
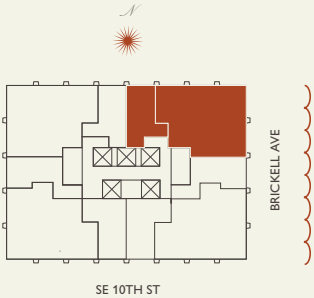
Residence B

FLOOR 55-77

Rooms	Square Footages	Features
2 Bedrooms	Indoor: 2,015 SQF	888 Suite & 888 Room
2 Bathrooms	Outdoor: 395 SQF	Furniture by Studio Sofield
Powder Room	Total: 2,410 SQF	11' Ceiling Height
		3 Juliet Balconies
		Loggia & Outdoor Kitchen
		Views: North East



FLOORS 55 - 77



Biscayne Bay

Stated dimensions are measured to the exterior boundaries of the exterior walls and the centerline of interior demising walls and in fact vary from the dimensions that would be determined by using the description and definition of the "Unit" set forth in the Declaration (which generally only includes the interior airspace between the perimeter walls and excludes interior structural components). For your reference, the area of the Unit, determined in accordance with those defined unit boundaries, is set forth on Exhibit "3" to the Declaration of Condominium. Note that measurements of rooms set forth on this floor plan are generally taken at the greatest points of each given room (as if the room were a perfect rectangle), without regard for any cutouts. Accordingly, the area of the actual room will typically be smaller than the product obtained by multiplying the stated length times width. All dimensions are approximate and may vary with actual construction, and all floor plans and development plans are subject to change.

888 Suite



888 Brickell Avenue

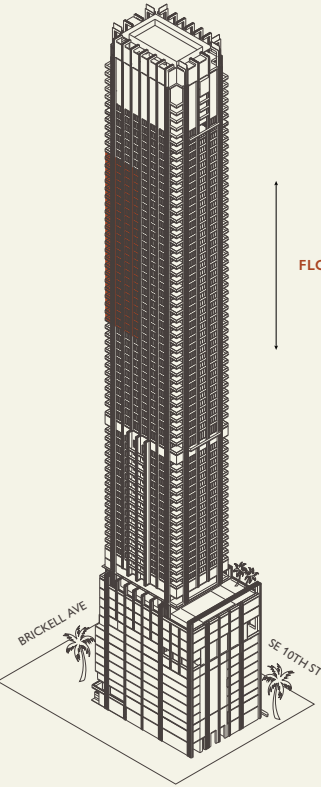
MIAMI FLORIDA



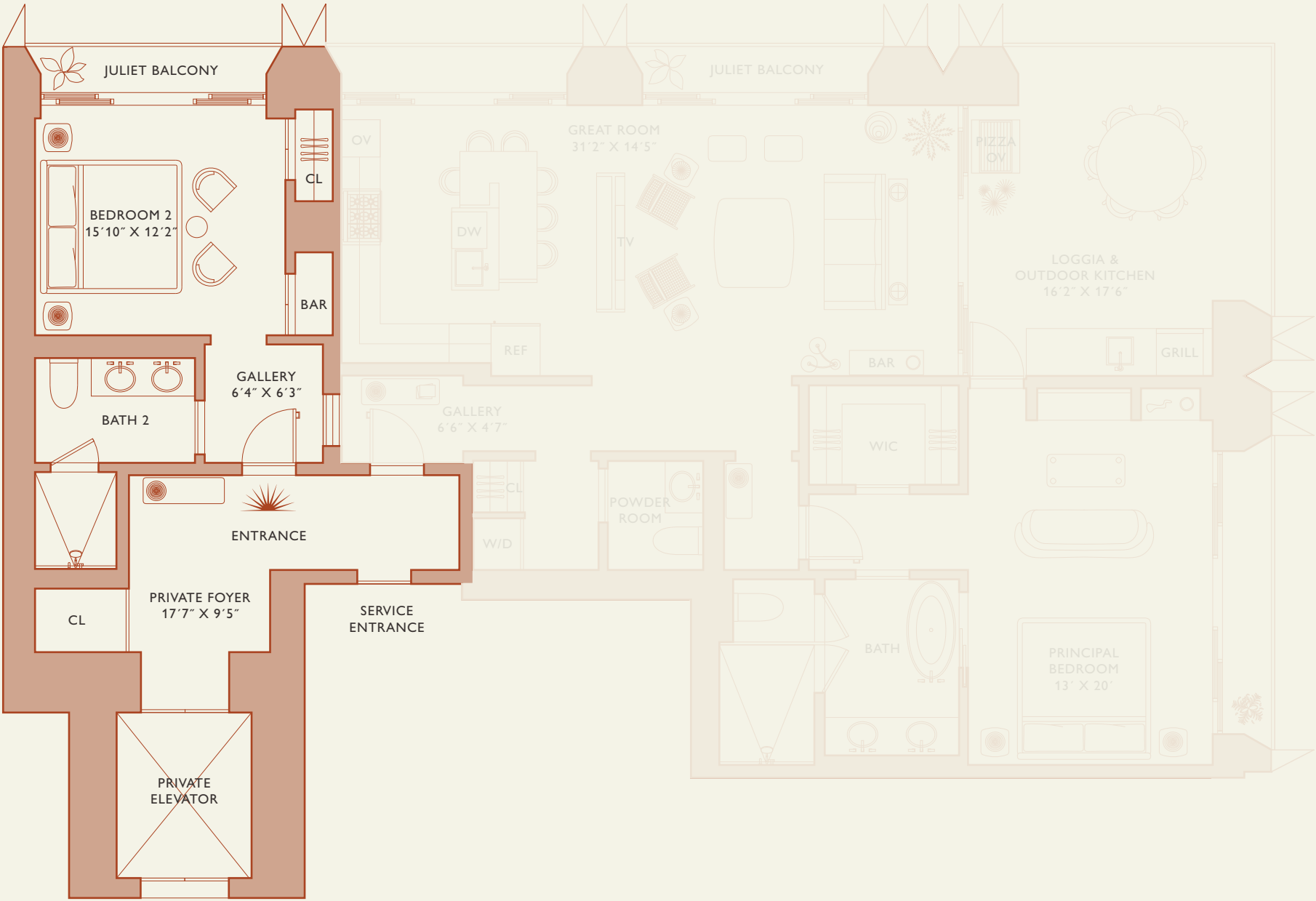
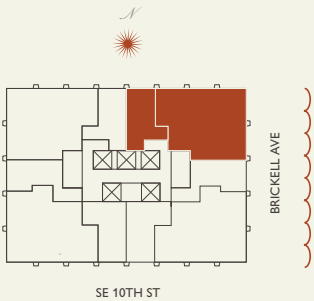
Residence B

FLOOR 55-77

Rooms	Square Footages	Features
2 Bedrooms	Indoor: 2,015 SQF	888 Suite & 888 Room
2 Bathrooms	Outdoor: 395 SQF	Furniture by Studio Sofield
Powder Room	Total: 2,410 SQF	11' Ceiling Height
		3 Juliet Balconies
		Loggia & Outdoor Kitchen
		Views: North East



FLOORS 55 - 77



Biscayne Bay

Stated dimensions are measured to the exterior boundaries of the exterior walls and the centerline of interior demising walls and in fact vary from the dimensions that would be determined by using the description and definition of the "Unit" set forth in the Declaration (which generally only includes the interior airspace between the perimeter walls and excludes interior structural components). For your reference, the area of the Unit, determined in accordance with those defined unit boundaries, is set forth on Exhibit "3" to the Declaration of Condominium. Note that measurements of rooms set forth on this floor plan are generally taken at the greatest points of each given room (as if the room were a perfect rectangle), without regard for any cutouts. Accordingly, the area of the actual room will typically be smaller than the product obtained by multiplying the stated length times width. All dimensions are approximate and may vary with actual construction, and all floor plans and development plans are subject to change.



JDS DEVELOPMENT GROUP

INFO@888MIAMI.COM

888 Room



888 Brickell Avenue

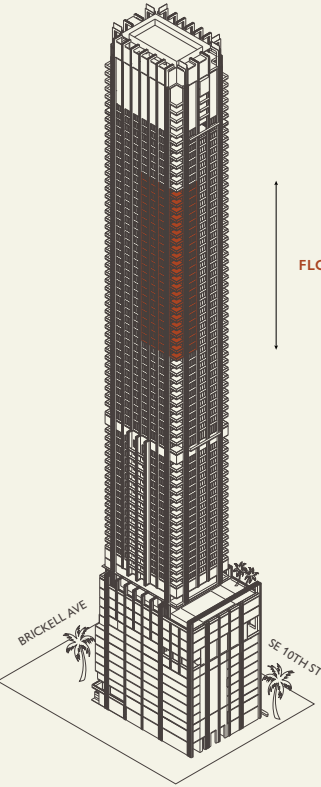
MIAMI FLORIDA



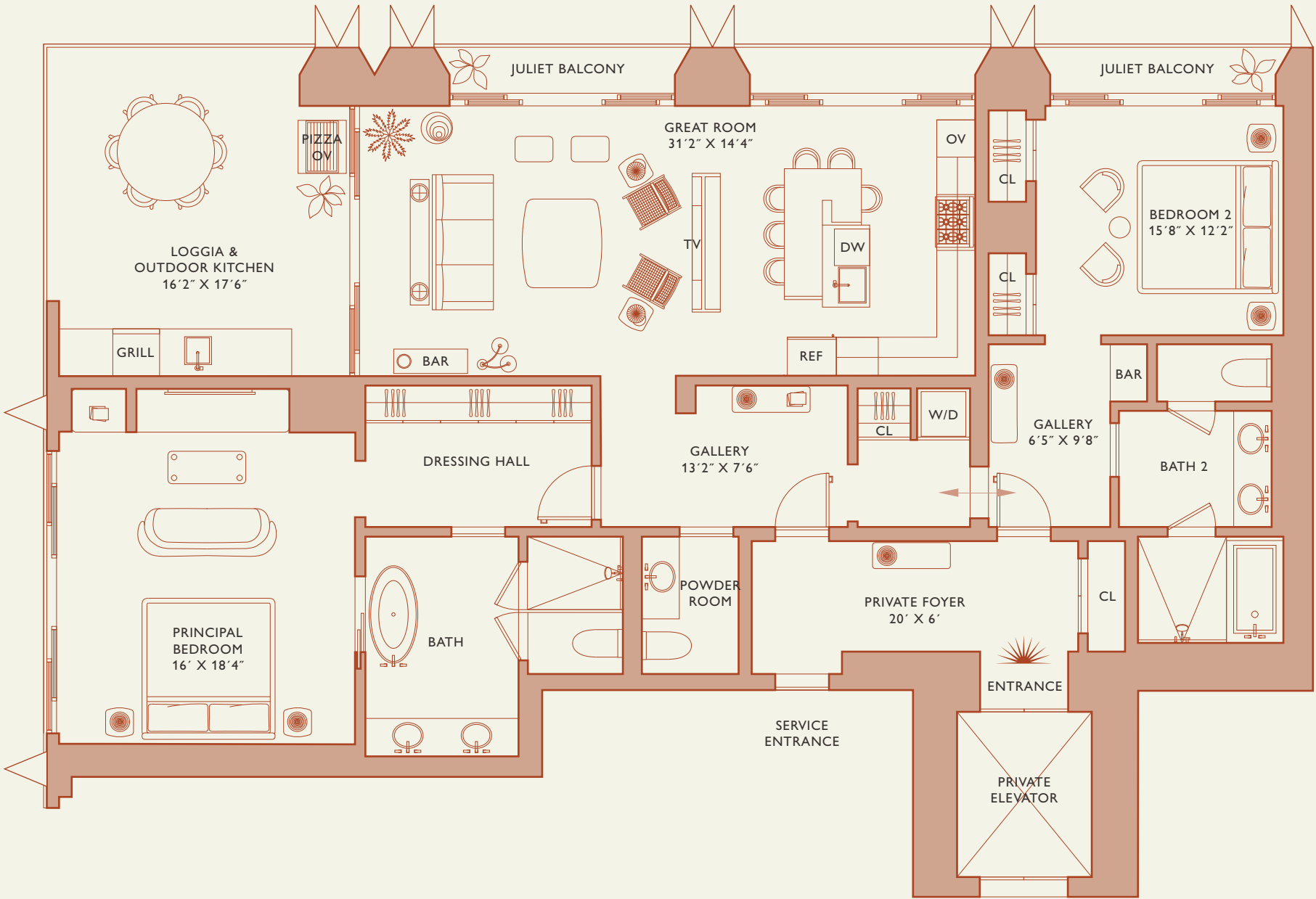
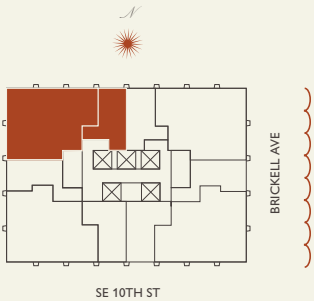
Residence C

FLOOR 55-77

Rooms	Square Footages	Features
2 Bedrooms	Indoor: 2,085 SQF	888 Suite & 888 Room
2 Bathrooms	Outdoor: 365 SQF	Furniture by Studio Sofield
Powder Room	Total: 2,450 SQF	11' Ceiling Height
		3 Juliet Balconies
		Loggia & Outdoor Kitchen
		Views: North West



FLOORS 55 - 77



Biscayne Bay

Stated dimensions are measured to the exterior boundaries of the exterior walls and the centerline of interior demising walls and in fact vary from the dimensions that would be determined by using the description and definition of the "Unit" set forth in the Declaration (which generally only includes the interior airspace between the perimeter walls and excludes interior structural components). For your reference, the area of the Unit, determined in accordance with those defined unit boundaries, is set forth on Exhibit "3" to the Declaration of Condominium. Note that measurements of rooms set forth on this floor plan are generally taken at the greatest points of each given room (as if the room were a perfect rectangle), without regard for any cutouts. Accordingly, the area of the actual room will typically be smaller than the product obtained by multiplying the stated length times width. All dimensions are approximate and may vary with actual construction, and all floor plans and development plans are subject to change.

888 Brickell Avenue

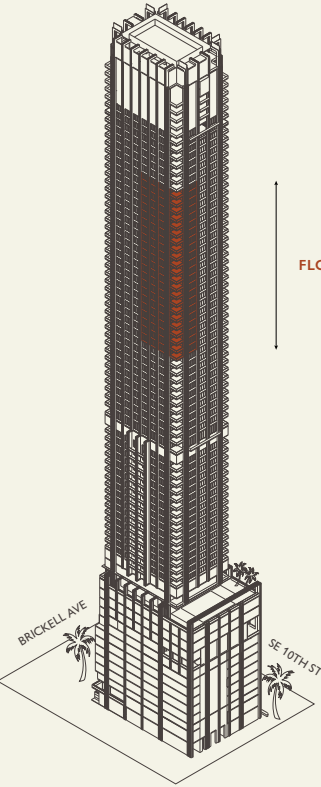
MIAMI FLORIDA



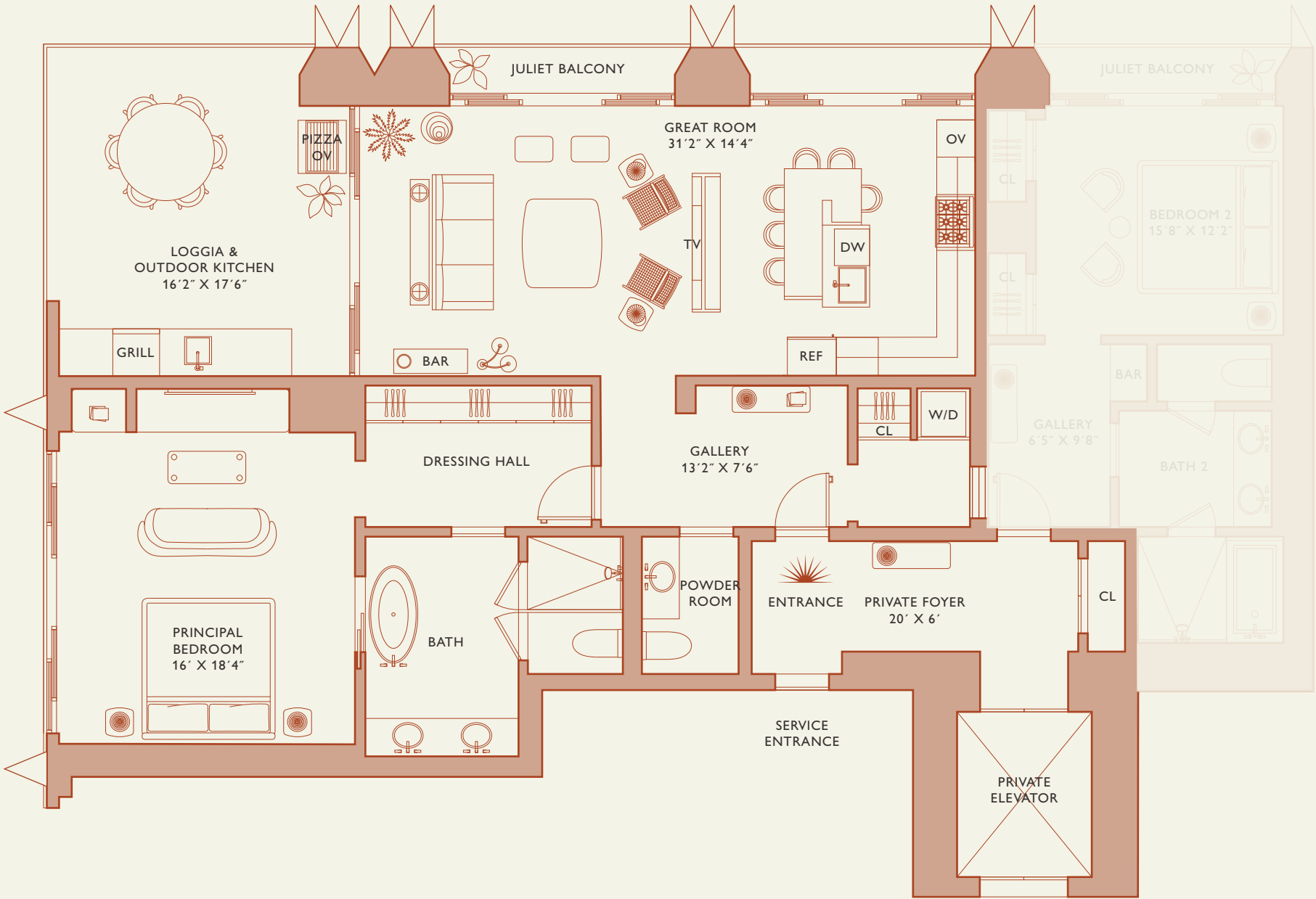
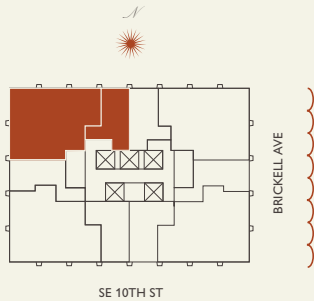
Residence C

FLOOR 55-77

Rooms	Square Footages	Features
2 Bedrooms	Indoor: 2,085 SQF	888 Suite & 888 Room
2 Bathrooms	Outdoor: 365 SQF	Furniture by Studio Sofield
Powder Room	Total: 2,450 SQF	11' Ceiling Height
		3 Juliet Balconies
		Loggia & Outdoor Kitchen
		Views: North West



FLOORS 55 - 77



Biscayne Bay

Stated dimensions are measured to the exterior boundaries of the exterior walls and the centerline of interior demising walls and in fact vary from the dimensions that would be determined by using the description and definition of the "Unit" set forth in the Declaration (which generally only includes the interior airspace between the perimeter walls and excludes interior structural components). For your reference, the area of the Unit, determined in accordance with those defined unit boundaries, is set forth on Exhibit "3" to the Declaration of Condominium. Note that measurements of rooms set forth on this floor plan are generally taken at the greatest points of each given room (as if the room were a perfect rectangle), without regard for any cutouts. Accordingly, the area of the actual room will typically be smaller than the product obtained by multiplying the stated length times width. All dimensions are approximate and may vary with actual construction, and all floor plans and development plans are subject to change.



JDS DEVELOPMENT GROUP

INFO@888MIAMI.COM

888 Suite



888 Brickell Avenue

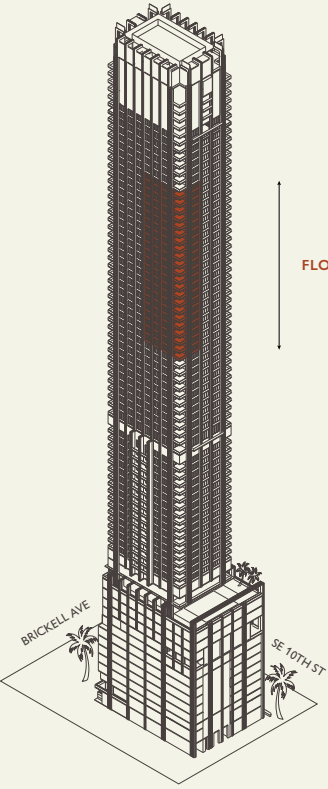
MIAMI FLORIDA



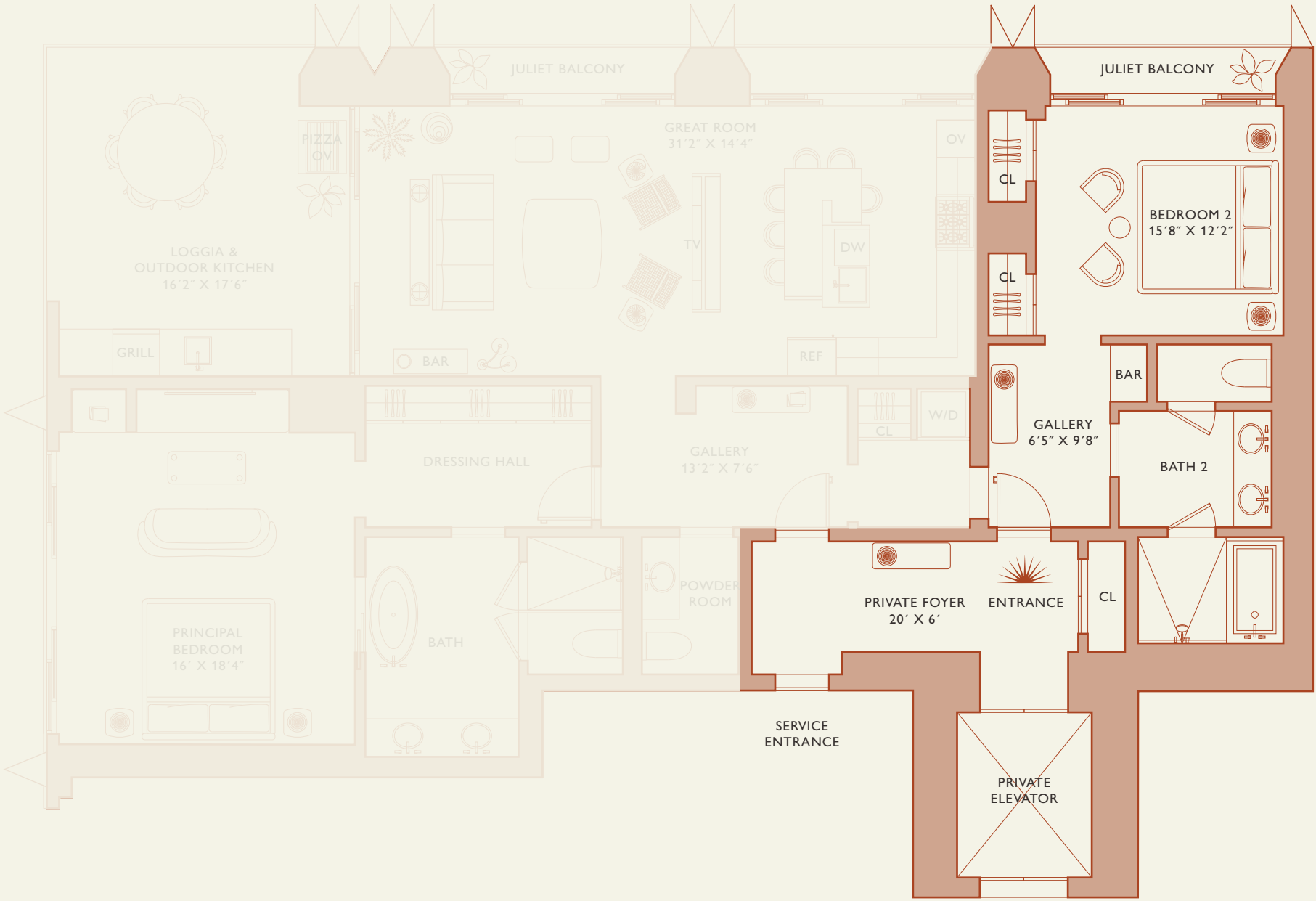
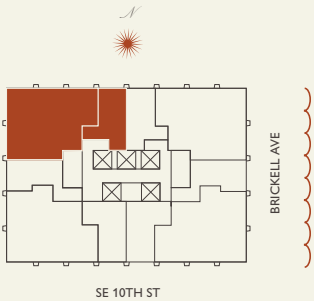
Residence C

FLOOR 55-77

Rooms	Square Footages	Features
2 Bedrooms	Indoor: 2,085 SQF	888 Suite & 888 Room
2 Bathrooms	Outdoor: 365 SQF	Furniture by Studio Sofield
Powder Room	Total: 2,450 SQF	11' Ceiling Height
		3 Juliet Balconies
		Loggia & Outdoor Kitchen
		Views: North West



FLOORS 55 - 77



Biscayne Bay

Stated dimensions are measured to the exterior boundaries of the exterior walls and the centerline of interior demising walls and in fact vary from the dimensions that would be determined by using the description and definition of the "Unit" set forth in the Declaration (which generally only includes the interior airspace between the perimeter walls and excludes interior structural components). For your reference, the area of the Unit, determined in accordance with those defined unit boundaries, is set forth on Exhibit "3" to the Declaration of Condominium. Note that measurements of rooms set forth on this floor plan are generally taken at the greatest points of each given room (as if the room were a perfect rectangle), without regard for any cutouts. Accordingly, the area of the actual room will typically be smaller than the product obtained by multiplying the stated length times width. All dimensions are approximate and may vary with actual construction, and all floor plans and development plans are subject to change.

888 Room



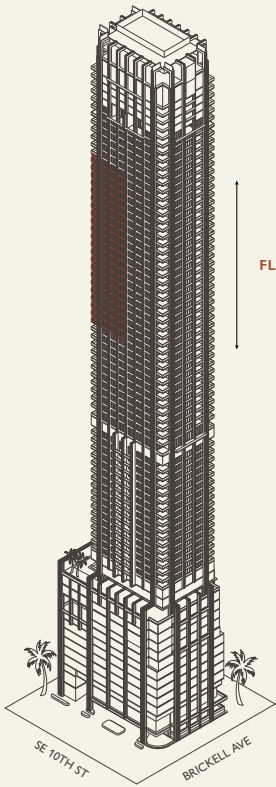
888 Brickell Avenue

MIAMI FLORIDA

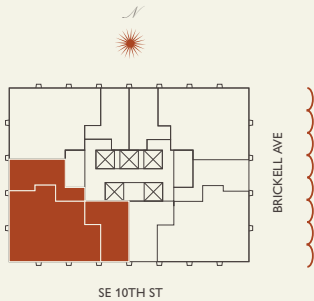
Residence D

FLOOR 55-77

Rooms	Square Footages	Features
3 Bedrooms	Indoor: 2,660 SQF	888 Suite & 888 Rooms
3 Bathrooms	Outdoor: 385 SQF	Furniture by Studio Sofield
Powder Room	Total: 3,045 SQF	11' Ceiling Height
		3 Juliet Balconies
		Loggia & Outdoor Kitchen
		Views: South West



FLOORS 55 - 77

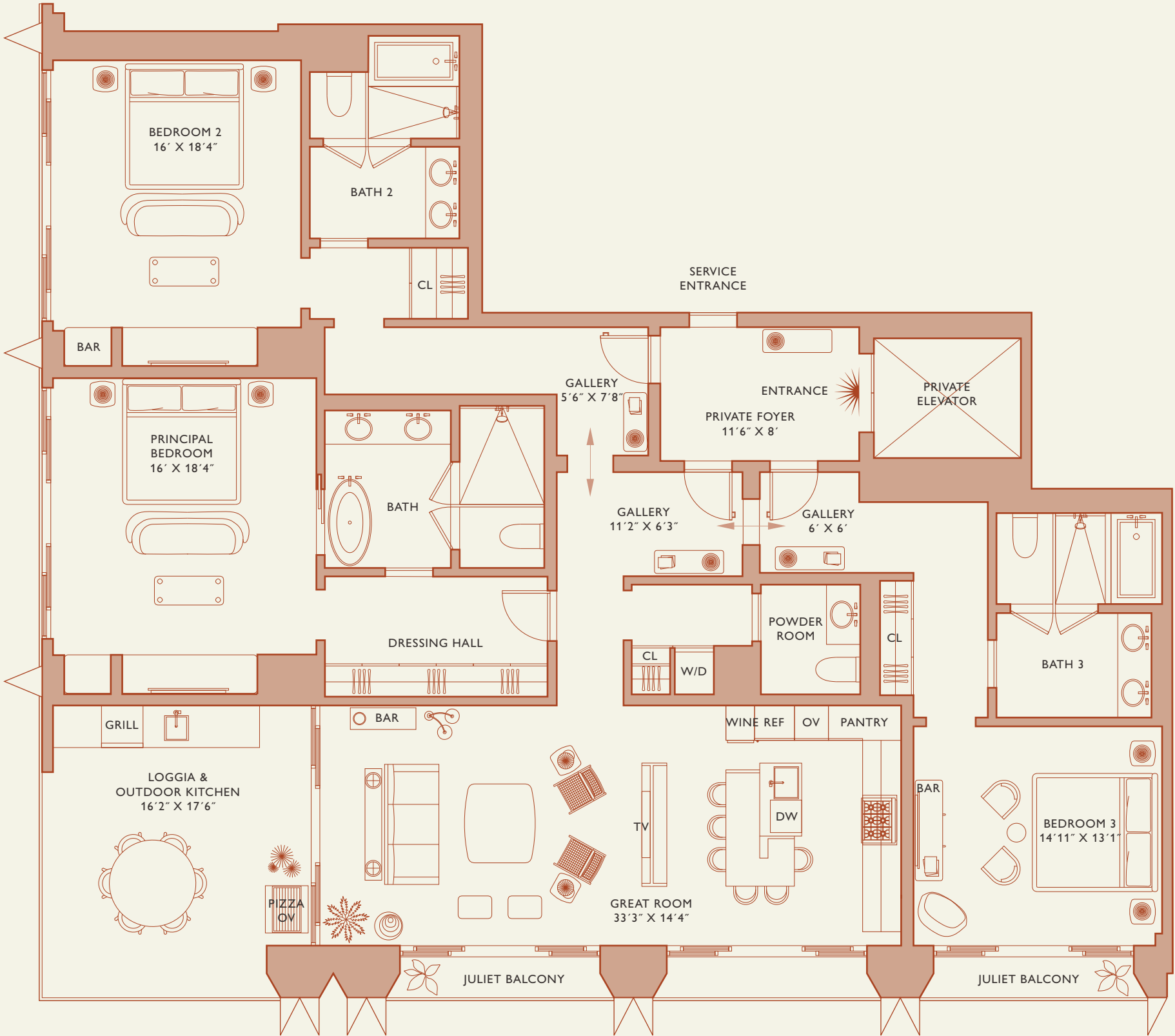


Stated dimensions are measured to the exterior boundaries of the exterior walls and the centerline of interior demising walls and in fact vary from the dimensions that would be determined by using the description and definition of the "Unit" set forth in the Declaration (which generally only includes the interior airspace between the perimeter walls and excludes interior structural components). For your reference, the area of the Unit, determined in accordance with those defined unit boundaries, is set forth on Exhibit "3" to the Declaration of Condominium. Note that measurements of rooms set forth on this floor plan are generally taken at the greatest points of each given room (as if the room were a perfect rectangle), without regard for any cutouts. Accordingly, the area of the actual room will typically be smaller than the product obtained by multiplying the stated length times width. All dimensions are approximate and may vary with actual construction, and all floor plans and development plans are subject to change.



JDS DEVELOPMENT GROUP

INFO@888MIAMI.COM



Biscayne Bay

888 Residence



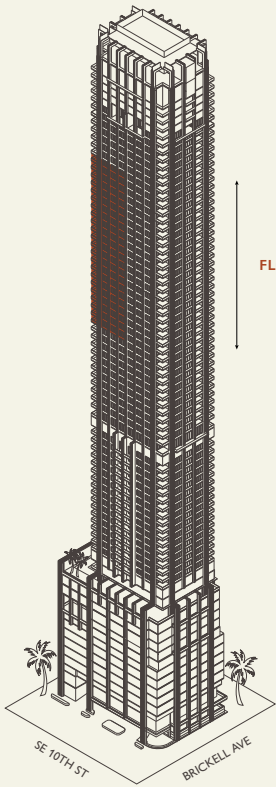
888 Brickell Avenue

MIAMI FLORIDA

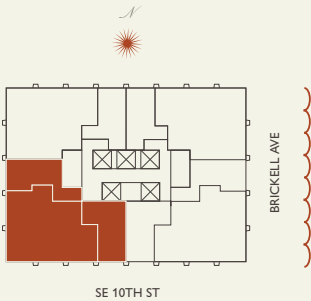
Residence D

FLOOR 55-77

Rooms	Square Footages	Features
3 Bedrooms	Indoor: 2,660 SQF	888 Suite & 888 Rooms
3 Bathrooms	Outdoor: 385 SQF	Furniture by Studio Sofield
Powder Room	Total: 3,045 SQF	11' Ceiling Height
		3 Juliet Balconies
		Loggia & Outdoor Kitchen
		Views: South West



FLOORS 55 - 77

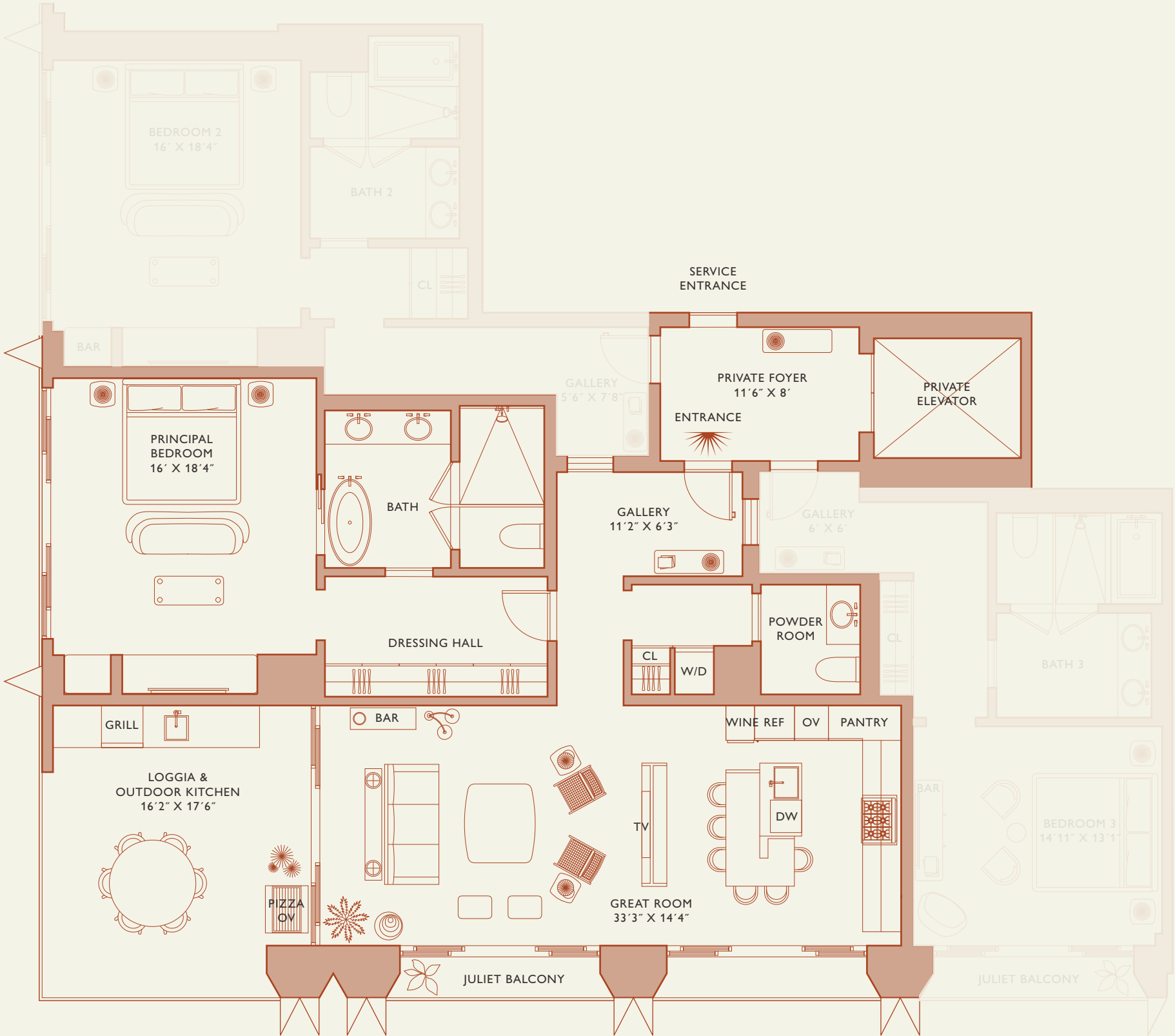


Stated dimensions are measured to the exterior boundaries of the exterior walls and the centerline of interior demising walls and in fact vary from the dimensions that would be determined by using the description and definition of the "Unit" set forth in the Declaration (which generally only includes the interior airspace between the perimeter walls and excludes interior structural components). For your reference, the area of the Unit, determined in accordance with those defined unit boundaries, is set forth on Exhibit "3" to the Declaration of Condominium. Note that measurements of rooms set forth on this floor plan are generally taken at the greatest points of each given room (as if the room were a perfect rectangle), without regard for any cutouts. Accordingly, the area of the actual room will typically be smaller than the product obtained by multiplying the stated length times width. All dimensions are approximate and may vary with actual construction, and all floor plans and development plans are subject to change.



JDS DEVELOPMENT GROUP

INFO@888MIAMI.COM



Biscayne Bay

888 Suite



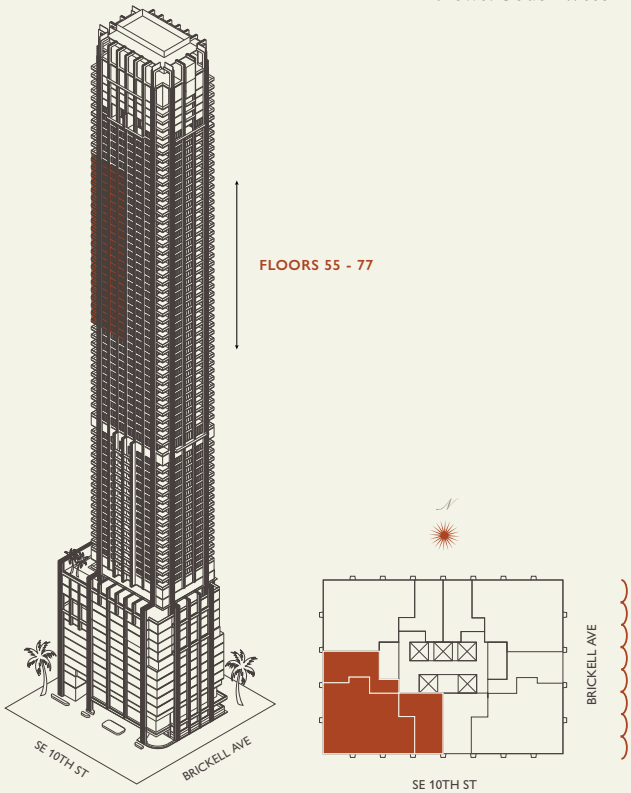
888 Brickell Avenue

MIAMI FLORIDA

Residence D

FLOOR 55-77

Rooms	Square Footages	Features
3 Bedrooms	Indoor: 2,660 SQF	888 Suite & 888 Rooms
3 Bathrooms	Outdoor: 385 SQF	Furniture by Studio Sofield
Powder Room	Total: 3,045 SQF	11' Ceiling Height
		3 Juliet Balconies
		Loggia & Outdoor Kitchen
		Views: South West



Stated dimensions are measured to the exterior boundaries of the exterior walls and the centerline of interior demising walls and in fact vary from the dimensions that would be determined by using the description and definition of the "Unit" set forth in the Declaration (which generally only includes the interior airspace between the perimeter walls and excludes interior structural components). For your reference, the area of the Unit, determined in accordance with those defined unit boundaries, is set forth on Exhibit "3" to the Declaration of Condominium. Note that measurements of rooms set forth on this floor plan are generally taken at the greatest points of each given room (as if the room were a perfect rectangle), without regard for any cutouts. Accordingly, the area of the actual room will typically be smaller than the product obtained by multiplying the stated length times width. All dimensions are approximate and may vary with actual construction, and all floor plans and development plans are subject to change.



Biscayne Bay

888 Room 1



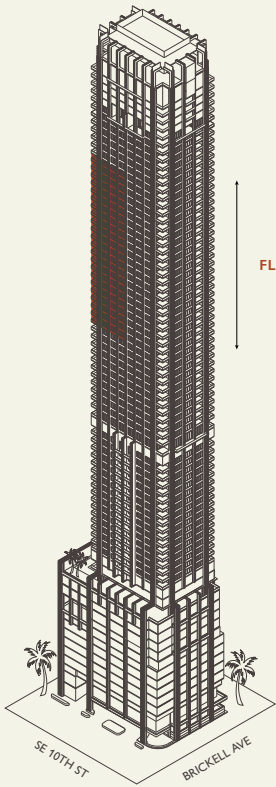
888 Brickell Avenue

MIAMI FLORIDA

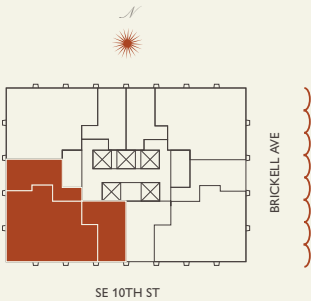
Residence D

FLOOR 55-77

Rooms	Square Footages	Features
3 Bedrooms	Indoor: 2,660 SQF	888 Suite & 888 Rooms
3 Bathrooms	Outdoor: 385 SQF	Furniture by Studio Sofield
Powder Room	Total: 3,045 SQF	11' Ceiling Height
		3 Juliet Balconies
		Loggia & Outdoor Kitchen
		Views: South West



FLOORS 55 - 77

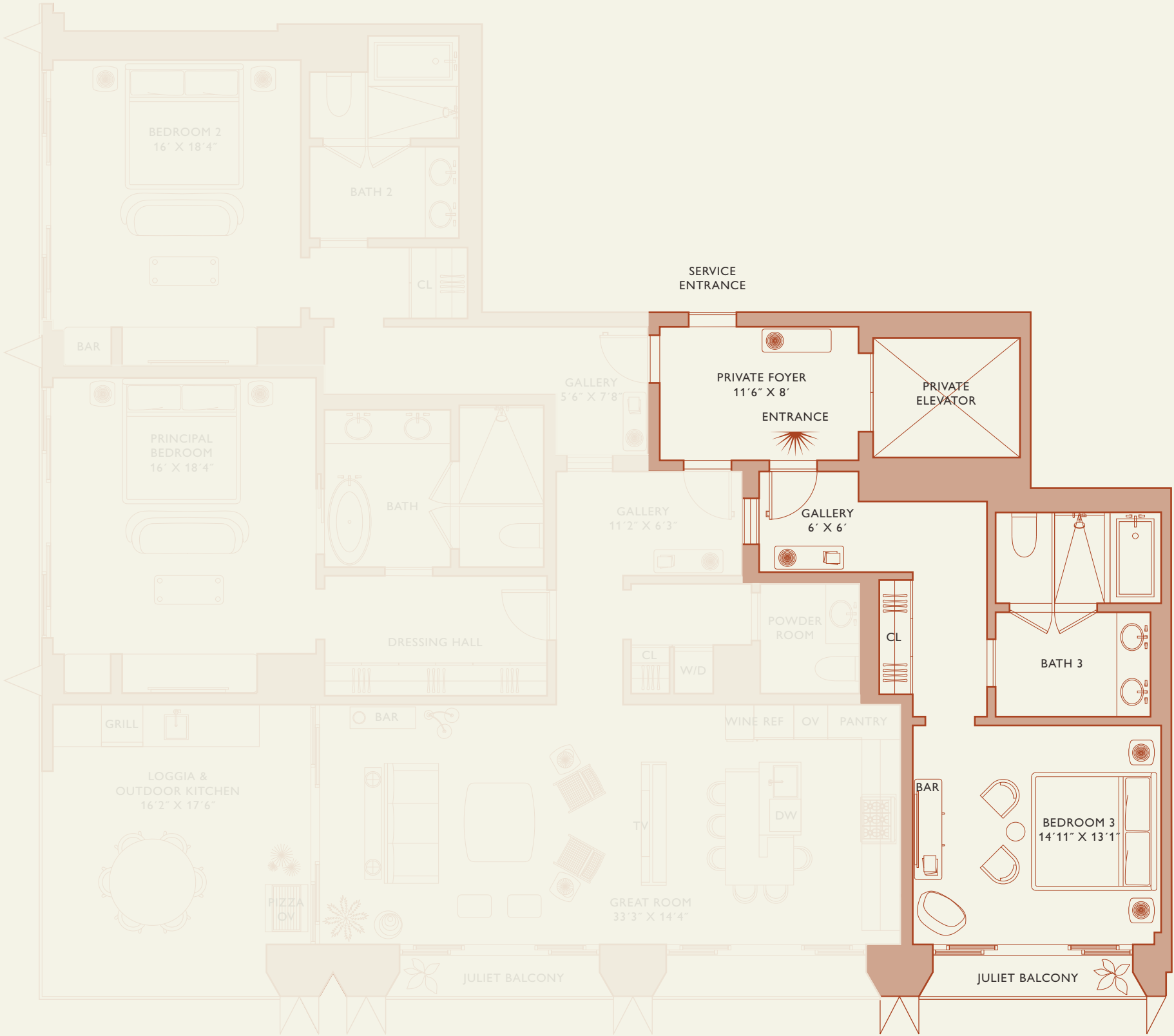


Stated dimensions are measured to the exterior boundaries of the exterior walls and the centerline of interior demising walls and in fact vary from the dimensions that would be determined by using the description and definition of the "Unit" set forth in the Declaration (which generally only includes the interior airspace between the perimeter walls and excludes interior structural components). For your reference, the area of the Unit, determined in accordance with those defined unit boundaries, is set forth on Exhibit "3" to the Declaration of Condominium. Note that measurements of rooms set forth on this floor plan are generally taken at the greatest points of each given room (as if the room were a perfect rectangle), without regard for any cutouts. Accordingly, the area of the actual room will typically be smaller than the product obtained by multiplying the stated length times width. All dimensions are approximate and may vary with actual construction, and all floor plans and development plans are subject to change.



JDS DEVELOPMENT GROUP

INFO@888MIAMI.COM



Biscayne Bay

888 Room 2

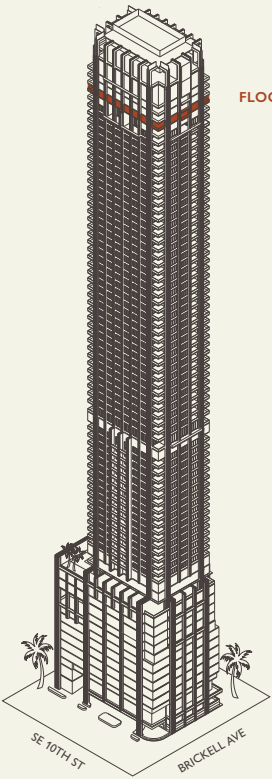


888 Brickell Avenue

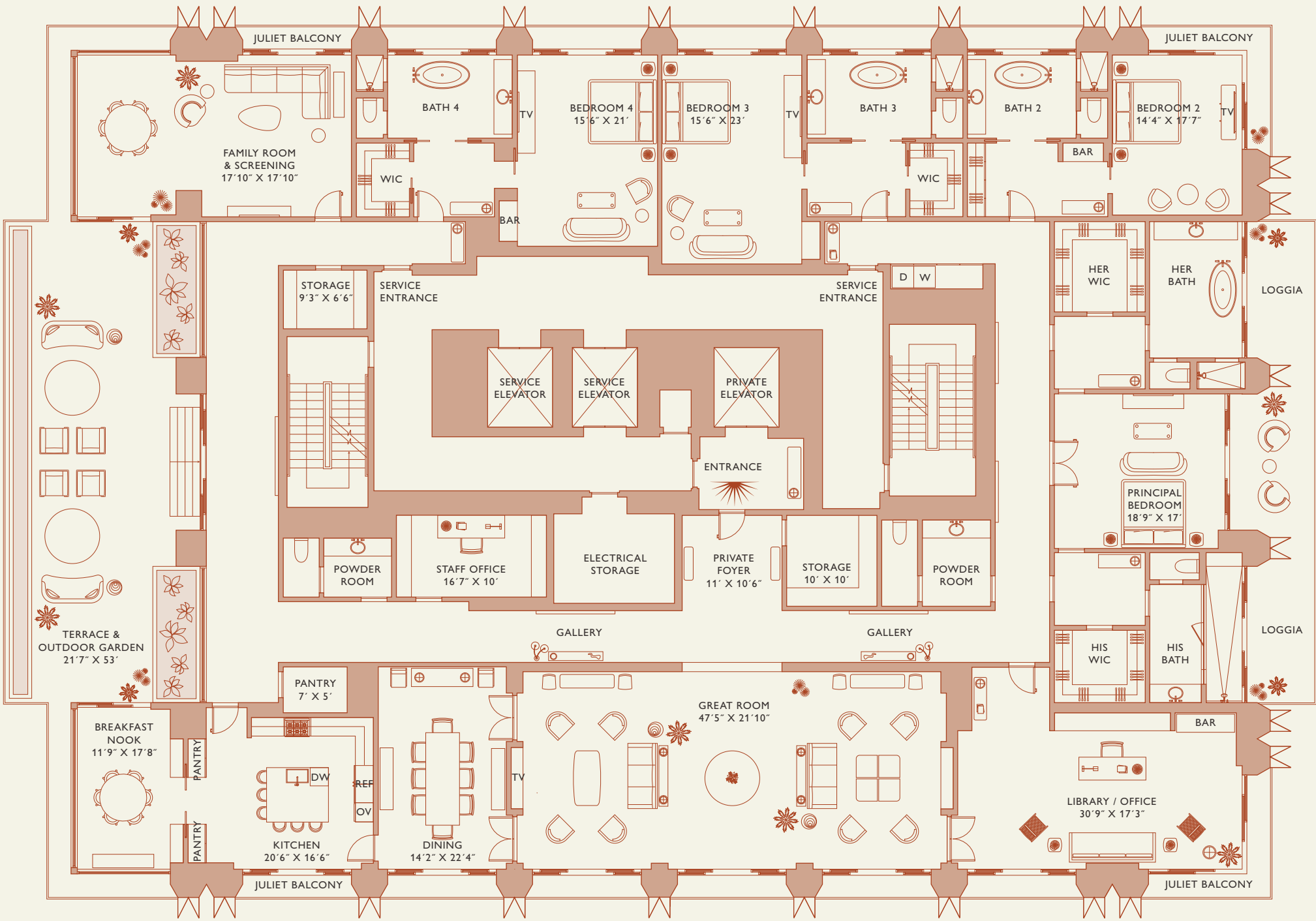
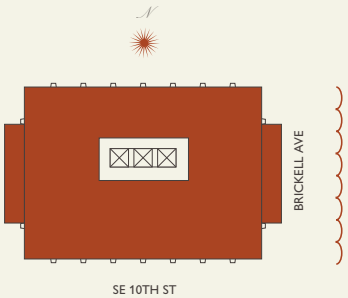
MIAMI FLORIDA

Penthouse
FLOOR 87

Rooms	Square Footages	Features
4 Bedrooms	Indoor: 9,780 SQF	Major Penthouse
5 Bathrooms	Outdoor: 1,370 SQF	Furniture by Studio Sofield
2 Powder Rooms	Total: 11,150 SQF	11' Ceiling Height
		14 Juliet Balconies
		3 Private Loggias
		Terrace & Outdoor Garden
		360° Views



FLOORS 87



Biscayne Bay

Penthouse

