

RESIDENCE 02

LEVEL 4-9

1 BEDROOM

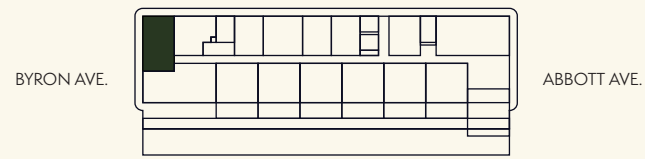
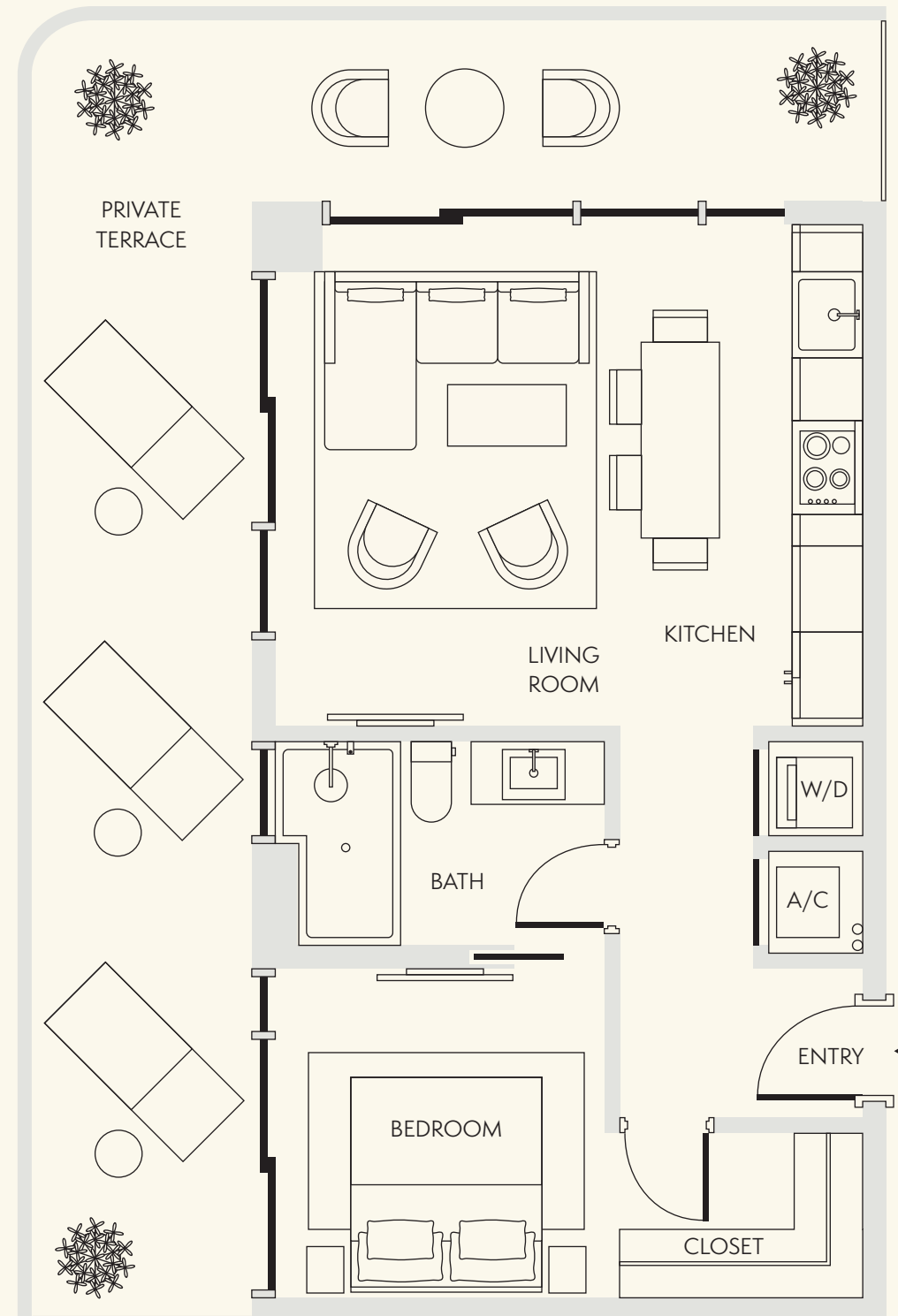
1 BATHROOM

INTERIOR
635 SF / 59 SM

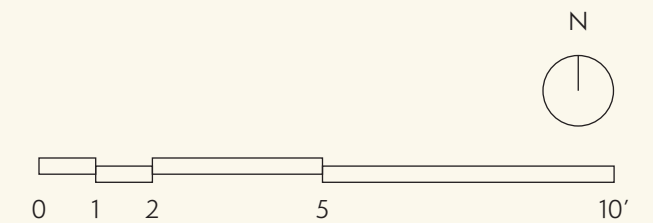
EXTERIOR
393 SF / 37 SM

TOTAL
1,028 SF / 96 SM

DIMENSIONS
36'-6" x 17'-11"



Level 04-09



Stated dimensions are measured to the exterior boundaries of the exterior walls and the centerline of interior demising walls and in fact vary from the dimensions that would be determined by using the description and definition of the "Unit" set forth in the Declaration (which generally only includes the interior airspace between the perimeter walls and excludes interior structural components). For the precise Unit boundaries, see Section 3.2 of the Declaration. The area of the Unit, determined in accordance with these defined Unit boundaries, is set forth in the Declaration. Note that measurements of rooms set forth on this floor plan are generally taken at the greatest points of each given room (as if the room were a perfect rectangle), without regard for any cutouts. Accordingly, the area of the actual room will typically be smaller than the product obtained by multiplying the stated length times width. All dimensions are approximate and may vary with actual construction, and all floor plans and development plans are subject to change. All depictions of furniture, appliances, counters and other matters of detail, including, without limitation, items of finish and decoration, are conceptual only and are not necessarily included in each Unit. Said items are only included if and to the extent provided in your purchase agreement.

NOT TO SCALE

RESIDENCE 08

LEVELS 4-8

1 BEDROOM

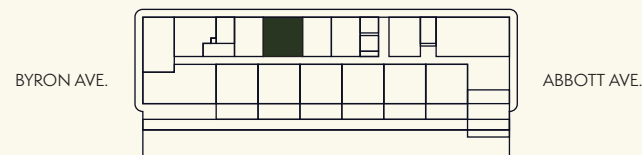
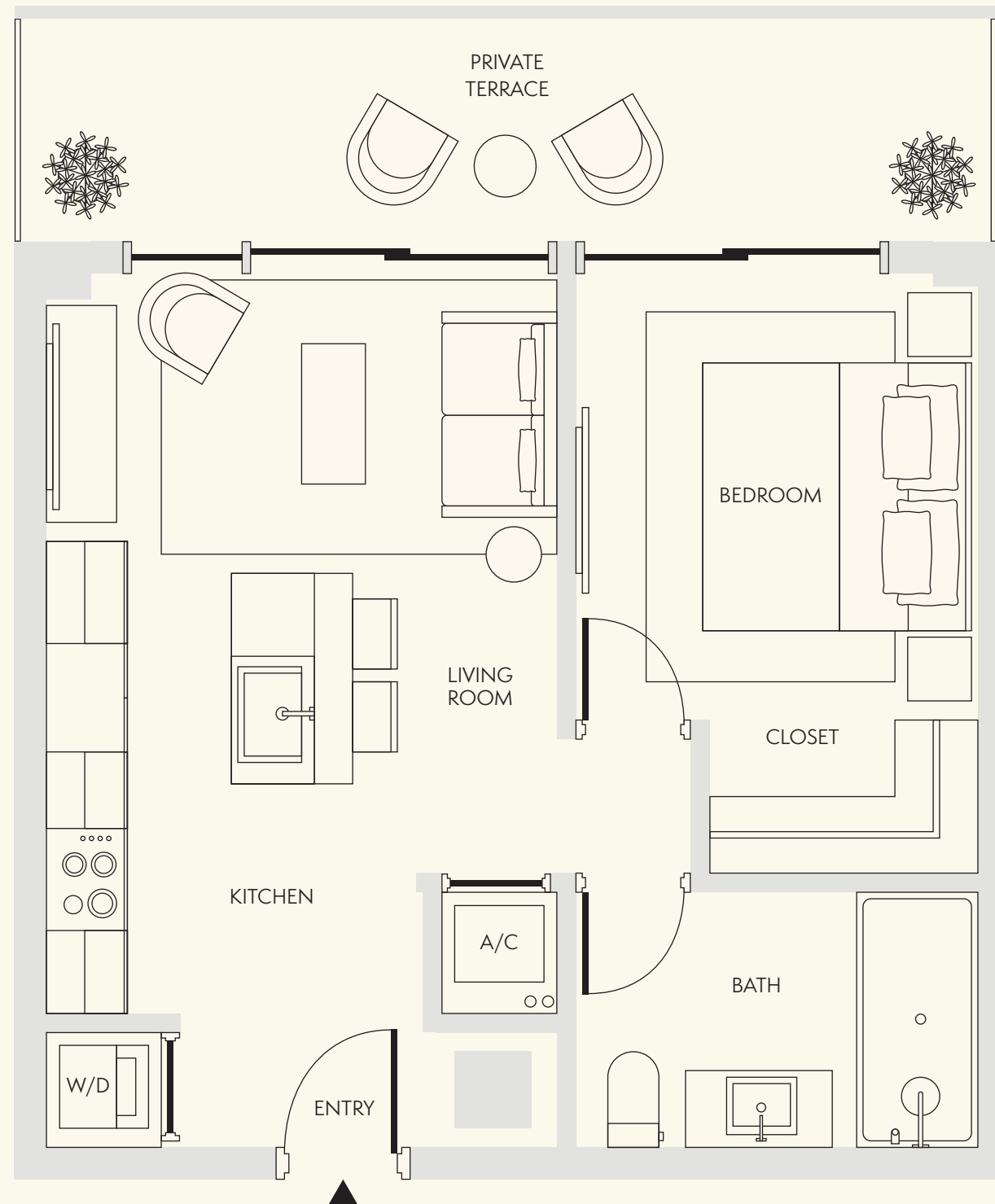
1 BATHROOM

INTERIOR
569 SF / 53 SM

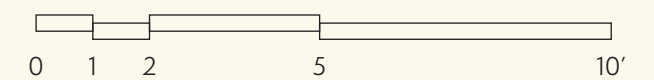
EXTERIOR
147 SF / 14 SM

TOTAL
716 SF / 67 SM

DIMENSIONS
23'-7" x 22'-2"



Level 04-08



Stated dimensions are measured to the exterior boundaries of the exterior walls and the centerline of interior demising walls and in fact vary from the dimensions that would be determined by using the description and definition of the "Unit" set forth in the Declaration (which generally only includes the interior airspace between the perimeter walls and excludes interior structural components). For the precise Unit boundaries, see Section 3.2 of the Declaration. The area of the Unit, determined in accordance with these defined Unit boundaries, is set forth in the Declaration. Note that measurements of rooms set forth on this floor plan are generally taken at the greatest points of each given room (as if the room were a perfect rectangle), without regard for any cutouts. Accordingly, the area of the actual room will typically be smaller than the product obtained by multiplying the stated length times width. All dimensions are approximate and may vary with actual construction, and all floor plans and development plans are subject to change. All depictions of furniture, appliances, counters and other matters of detail, including, without limitation, items of finish and decoration, are conceptual only and are not necessarily included in each Unit. Said items are only included if and to the extent provided in your purchase agreement.

NOT TO SCALE

RESIDENCE 11

LEVEL 4-9

1 BEDROOM

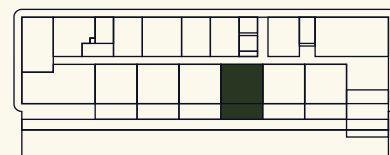
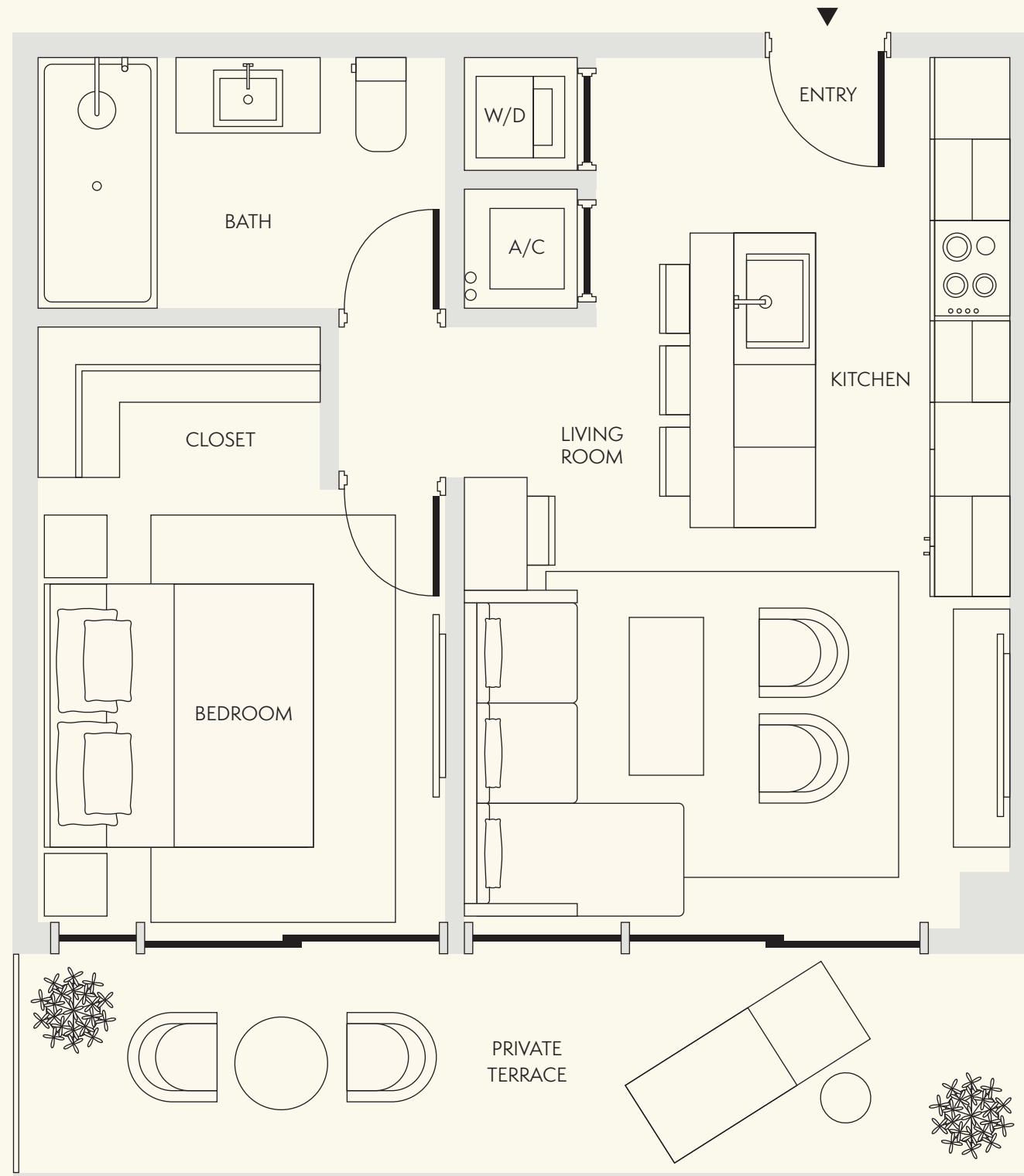
1 BATHROOM

INTERIOR
602 SF / 56 SM

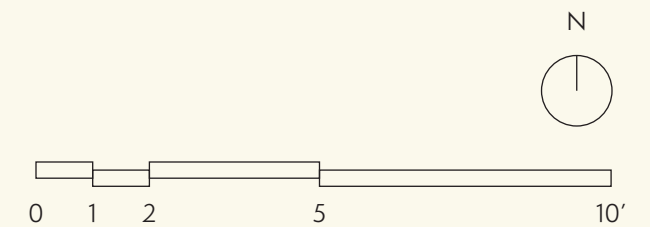
EXTERIOR
158 SF / 15 SM

TOTAL
760 SF / 71 SM

DIMENSIONS
22'-5" x 25'-2"



Level 04-09



EllaMiamiBeach.com 786-919-6940 6940 Abbott Ave, Miami Beach FL, 33141

Stated dimensions are measured to the exterior boundaries of the exterior walls and the centerline of interior demising walls and in fact vary from the dimensions that would be determined by using the description and definition of the "Unit" set forth in the Declaration (which generally only includes the interior airspace between the perimeter walls and excludes interior structural components). For the precise Unit boundaries, see Section 3.2 of the Declaration. The area of the Unit, determined in accordance with these defined Unit boundaries, is set forth in the Declaration. Note that measurements of rooms set forth on this floor plan are generally taken at the greatest points of each given room (as if the room were a perfect rectangle), without regard for any cutouts. Accordingly, the area of the actual room will typically be smaller than the product obtained by multiplying the stated length times width. All dimensions are approximate and may vary with actual construction, and all floor plans and development plans are subject to change. All depictions of furniture, appliances, counters and other matters of detail, including, without limitation, items of finish and decoration, are conceptual only and are not necessarily included in each Unit. Said items are only included if and to the extent provided in your purchase agreement.

NOT TO SCALE

RESIDENCE 06



LEVEL 9

1 BEDROOM

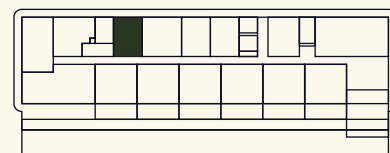
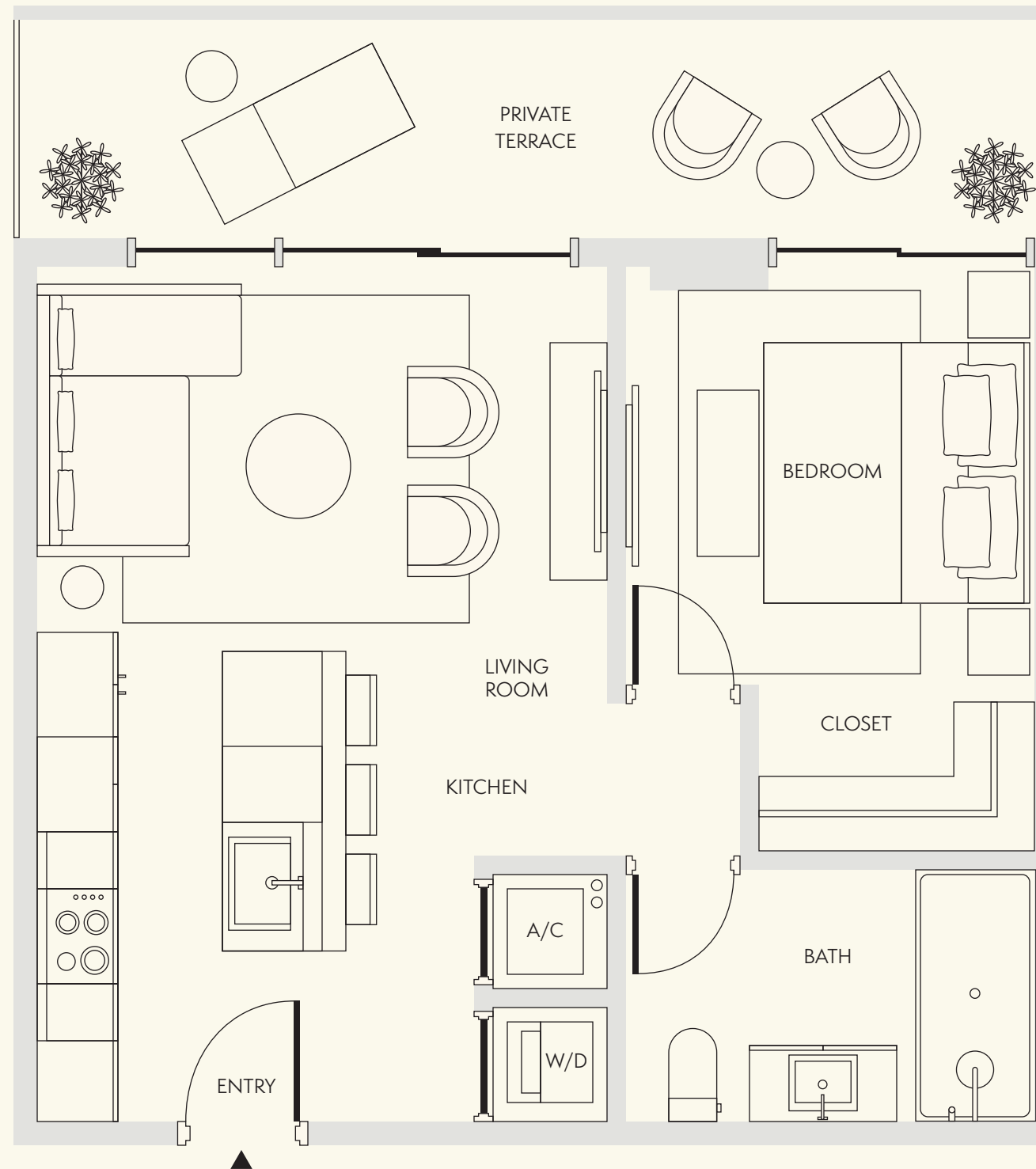
1 BATHROOM

INTERIOR
620 SF / 58 SM

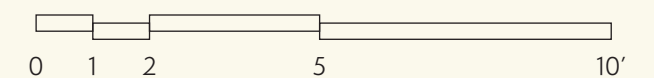
EXTERIOR
160 SF / 15 SM

TOTAL
780 SF / 73 SM

DIMENSIONS
23'-6" x 26'-6"



Level 09



Stated dimensions are measured to the exterior boundaries of the exterior walls and the centerline of interior demising walls and in fact vary from the dimensions that would be determined by using the description and definition of the "Unit" set forth in the Declaration (which generally only includes the interior airspace between the perimeter walls and excludes interior structural components). For the precise Unit boundaries, see Section 3.2 of the Declaration. The area of the Unit, determined in accordance with these defined Unit boundaries, is set forth in the Declaration. Note that measurements of rooms set forth on this floor plan are generally taken at the greatest points of each given room (as if the room were a perfect rectangle), without regard for any cutouts. Accordingly, the area of the actual room will typically be smaller than the product obtained by multiplying the stated length times width. All dimensions are approximate and may vary with actual construction, and all floor plans and development plans are subject to change. All depictions of furniture, appliances, counters and other matters of detail, including, without limitation, items of finish and decoration, are conceptual only and are not necessarily included in each Unit. Said items are only included if and to the extent provided in your purchase agreement.

NOT TO SCALE

RESIDENCE 06

LEVEL 4-9

STUDIO

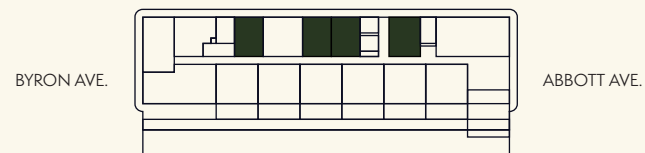
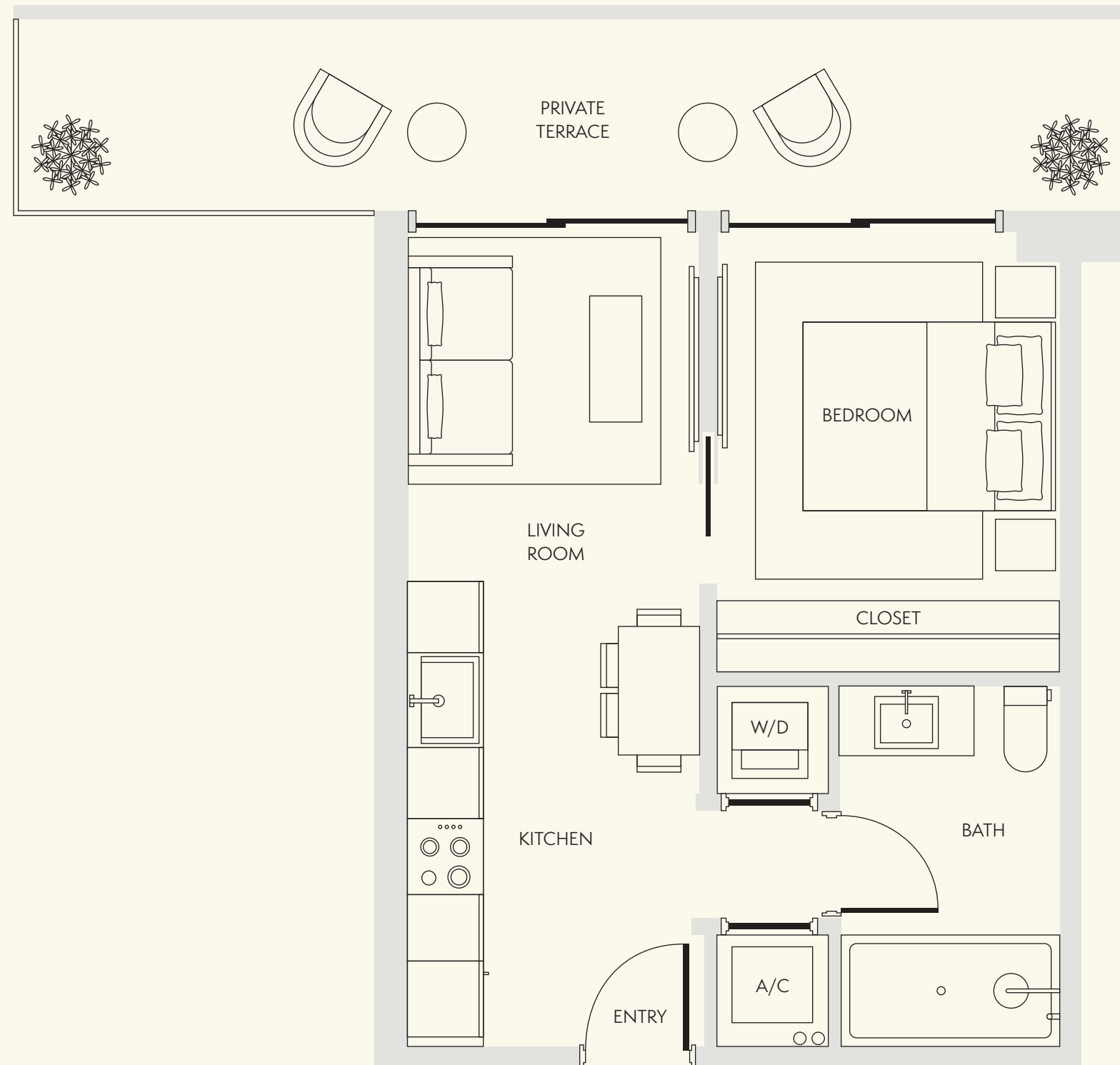
1 BATHROOM

INTERIOR
434 SF / 40 SM

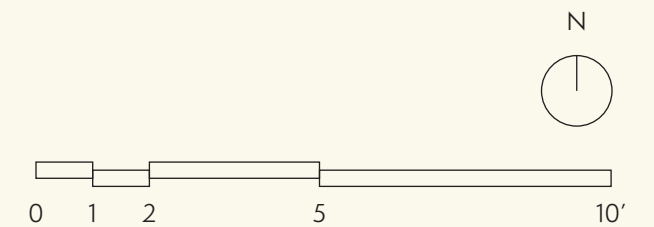
EXTERIOR
112 SF / 10 SM

TOTAL
546 SF / 50 SM

DIMENSIONS
22'-2" x 17'-10"



Level 04-09



Stated dimensions are measured to the exterior boundaries of the exterior walls and the centerline of interior demising walls and in fact vary from the dimensions that would be determined by using the description and definition of the "Unit" set forth in the Declaration (which generally only includes the interior airspace between the perimeter walls and excludes interior structural components). For the precise Unit boundaries, see Section 3.2 of the Declaration. The area of the Unit, determined in accordance with these defined Unit boundaries, is set forth in the Declaration. Note that measurements of rooms set forth on this floor plan are generally taken at the greatest points of each given room (as if the room were a perfect rectangle), without regard for any cutouts. Accordingly, the area of the actual room will typically be smaller than the product obtained by multiplying the stated length times width. All dimensions are approximate and may vary with actual construction, and all floor plans and development plans are subject to change. All depictions of furniture, appliances, counters and other matters of detail, including, without limitation, items of finish and decoration, are conceptual only and are not necessarily included in each Unit. Said items are only included if and to the extent provided in your purchase agreement.

NOT TO SCALE

RESIDENCE 16



LEVEL 4-9

2 BEDROOMS

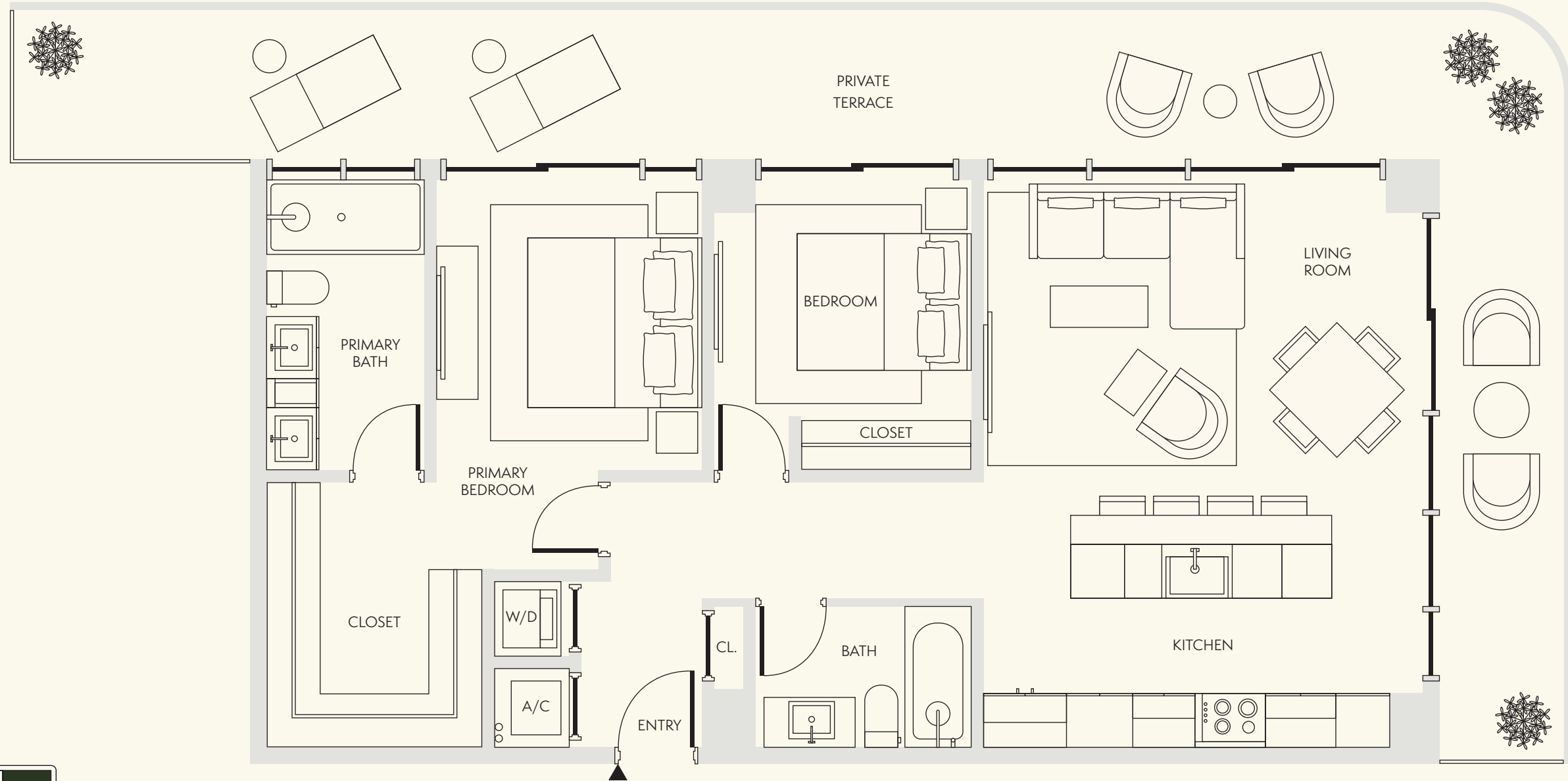
2 BATHROOMS

INTERIOR
1,076 SF / 100 SM

EXTERIOR
480 SF / 45 SM

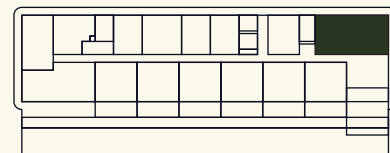
TOTAL
1,556 SF / 145 SM

DIMENSIONS
22'-2" x 45'-2"

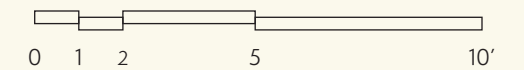


BYRON AVE.

ABBOTT AVE.



Level 04-09



Stated dimensions are measured to the exterior boundaries of the exterior walls and the centerline of interior demising walls and in fact vary from the dimensions that would be determined by using the description and definition of the "Unit" set forth in the Declaration (which generally only includes the interior airspace between the perimeter walls and excludes interior structural components). For the precise Unit boundaries, see Section 3.2 of the Declaration. The area of the Unit, determined in accordance with these defined Unit boundaries, is set forth in the Declaration. Note that measurements of rooms set forth on this floor plan are generally taken at the greatest points of each given room (as if the room were a perfect rectangle), without regard for any cutouts. Accordingly, the area of the actual room will typically be smaller than the product obtained by multiplying the stated length times width. All dimensions are approximate and may vary with actual construction, and all floor plans and development plans are subject to change. All depictions of furniture, appliances, counters and other matters of detail, including, without limitation, items of finish and decoration, are conceptual only and are not necessarily included in each Unit. Said items are only included if and to the extent provided in your purchase agreement.

NOT TO SCALE