

RESIDENCES
400 CENTRAL

RESIDENCE
501-601

1 BEDROOM
2 BATH

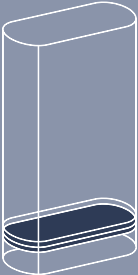
INTERIOR
1,443 SF

TERRACE
313 SF

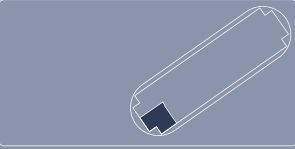
TOTAL
1,756 SF

▲
N

FLOORS
5-6

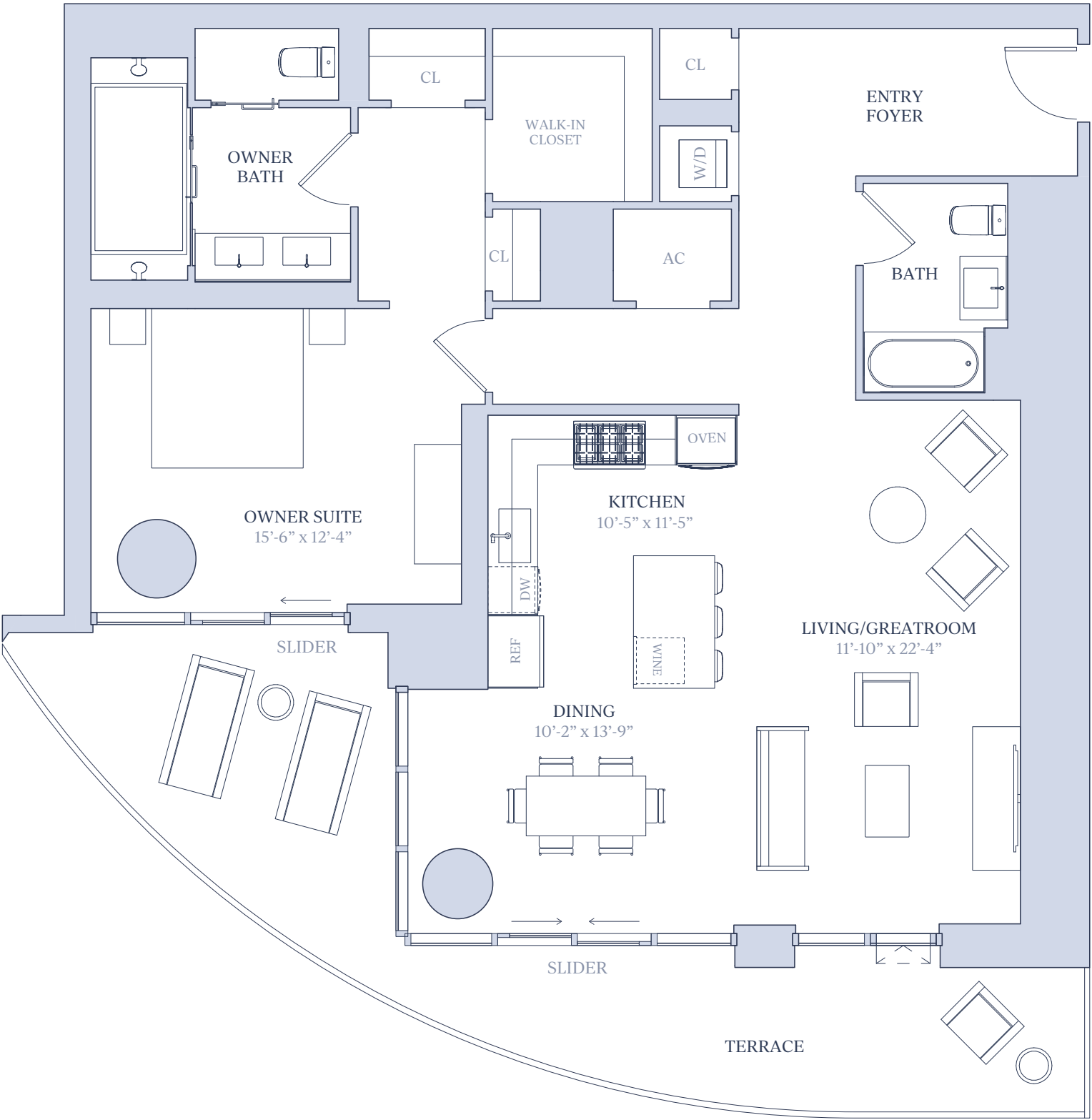


Central Avenue




4th Street North

1st Avenue South



SALES GALLERY LOCATED AT 465 CENTRAL AVENUE, ST. PETERSBURG, FL 33701 | 727-209-7848 | info@residences400central.com | residences400central.com

Stated square footages and dimensions are measured to the exterior boundaries of the exterior walls and the centerline of interior demising walls and in fact vary from the square footage and dimensions that would be determined by using the description and definition of the “Unit” set forth in the Declaration (which generally only includes the interior airspace between the perimeter walls and excludes all interior structural components and other common elements). This method is generally used in sales materials and is provided to allow a prospective buyer to compare the Units with units in other condominium projects that utilize the same method. For your reference, the area of the Unit determined in accordance with the unit boundaries as defined in the Declaration is disclosed in the Declaration. Measurements of rooms set forth on this floor plan are generally taken at the farthest points of each given room (as if the room were a perfect rectangle), without regard for any cutouts or variations. Accordingly, the area of the actual room will typically be smaller than the product obtained by multiplying the stated length and width. All dimensions are approximations and estimates which will vary with actual construction and may vary based on the location of the Unit in the building and the amount of shear wall tapering applicable to the Unit, and all floor plans, specifications and other development plans are subject to change and will not necessarily accurately reflect the final plans and specifications for the development. All depictions of appliances, wine cooler(s), counters, soffits, floor coverings and other matters of detail, including, without limitation, items of finish and decoration, are conceptual only and are not necessarily included in each Unit.



RESIDENCES
400 CENTRAL

RESIDENCE

504-604, 804-1904

2 BEDROOM

2.5 BATH

INTERIOR

1,311 SF

TERRACE

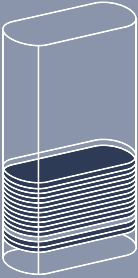
288 SF

TOTAL

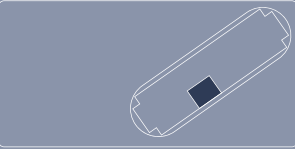
1,599 SF

▲
N

FLOORS
5-6,
8-19



Central Avenue




4th Street North

1st Avenue South

The floor plan shows a rectangular unit layout. On the left side, there is a bedroom with a closet and a bathroom. Moving right, there is a powder room and a walk-in closet. The central area contains a living and dining space with a sofa and a dining table. To the right of the living area is a kitchen with an oven, refrigerator, and wine cooler. Further right is an owner's suite with a walk-in closet and a private bathroom. The unit has two slider doors leading to a terrace at the bottom. Various closets and storage areas are distributed throughout the plan.

SALES GALLERY LOCATED AT 465 CENTRAL AVENUE, ST. PETERSBURG, FL 33701 | 727-209-7848 | info@residences400central.com | residences400central.com

Stated square footages and dimensions are measured to the exterior boundaries of the exterior walls and the centerline of interior demising walls and in fact vary from the square footage and dimensions that would be determined by using the description and definition of the "Unit" set forth in the Declaration (which generally only includes the interior airspace between the perimeter walls and excludes all interior structural components and other common elements). This method is generally used in sales materials and is provided to allow a prospective buyer to compare the Units with units in other condominium projects that utilize the same method. For your reference, the area of the Unit determined in accordance with the unit boundaries as defined in the Declaration is disclosed in the Declaration. Measurements of rooms set forth on this floor plan are generally taken at the farthest points of each given room (as if the room were a perfect rectangle), without regard for any cutouts or variations. Accordingly, the area of the actual room will typically be smaller than the product obtained by multiplying the stated length and width. All dimensions are approximations and estimates which will vary with actual construction and may vary based on the location of the Unit in the building and the amount of shear wall tapering applicable to the Unit, and all floor plans, specifications and other development plans are subject to change and will not necessarily accurately reflect the final plans and specifications for the development. All depictions of appliances, wine cooler(s), counters, soffits, floor coverings and other matters of detail, including, without limitation, items of finish and decoration, are conceptual only and are not necessarily included in each Unit.



RESIDENCES
400 CENTRAL

RESIDENCE
506-1906

2 BEDROOM
2.5 BATH

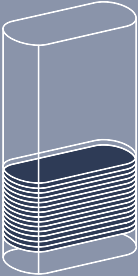
INTERIOR
1,277 SF

TERRACE
258 SF

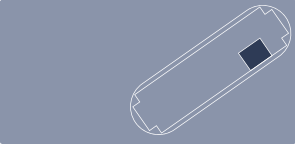
TOTAL
1,535 SF

▲
N

FLOORS
5-19



Central Avenue



4th Street North

1st Avenue South

OWNER BATH

WALK-IN CLOSET

OWNER SUITE
12'-7" x 13'-2"

CL

KITCHEN
10'-5" x 11'-5"

WINE

REF

DW

OVEN

LIVING/DINING
13'-3" x 19'-3"

POWDER ROOM

W/D

BEDROOM
10'-9" x 11'-3"

BATH

CL

SLIDER

SLIDER

TERRACE

SALES GALLERY LOCATED AT 465 CENTRAL AVENUE, ST. PETERSBURG, FL 33701 | 727-209-7848 | info@residences400central.com | residences400central.com

Stated square footages and dimensions are measured to the exterior boundaries of the exterior walls and the centerline of interior demising walls and in fact vary from the square footage and dimensions that would be determined by using the description and definition of the "Unit" set forth in the Declaration (which generally only includes the interior airspace between the perimeter walls and excludes all interior structural components and other common elements). This method is generally used in sales materials and is provided to allow a prospective buyer to compare the Units with units in other condominium projects that utilize the same method. For your reference, the area of the Unit determined in accordance with the unit boundaries as defined in the Declaration is disclosed in the Declaration. Measurements of rooms set forth on this floor plan are generally taken at the farthest points of each given room (as if the room were a perfect rectangle), without regard for any cutouts or variations. Accordingly, the area of the actual room will typically be smaller than the product obtained by multiplying the stated length and width. All dimensions are approximations and estimates which will vary with actual construction and may vary based on the location of the Unit in the building and the amount of shear wall tapering applicable to the Unit, and all floor plans, specifications and other development plans are subject to change and will not necessarily accurately reflect the final plans and specifications for the development. All depictions of appliances, wine cooler(s), counters, soffits, floor coverings and other matters of detail, including, without limitation, items of finish and decoration, are conceptual only and are not necessarily included in each Unit.



RESIDENCES
400 CENTRAL

RESIDENCE
708

2 BEDROOM
2.5 BATH

INTERIOR

1,344 SF

TERRACE

1,834 SF

TOTAL

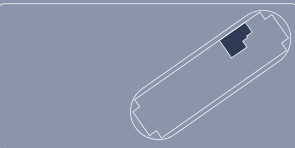
3,182 SF



FLOOR
7

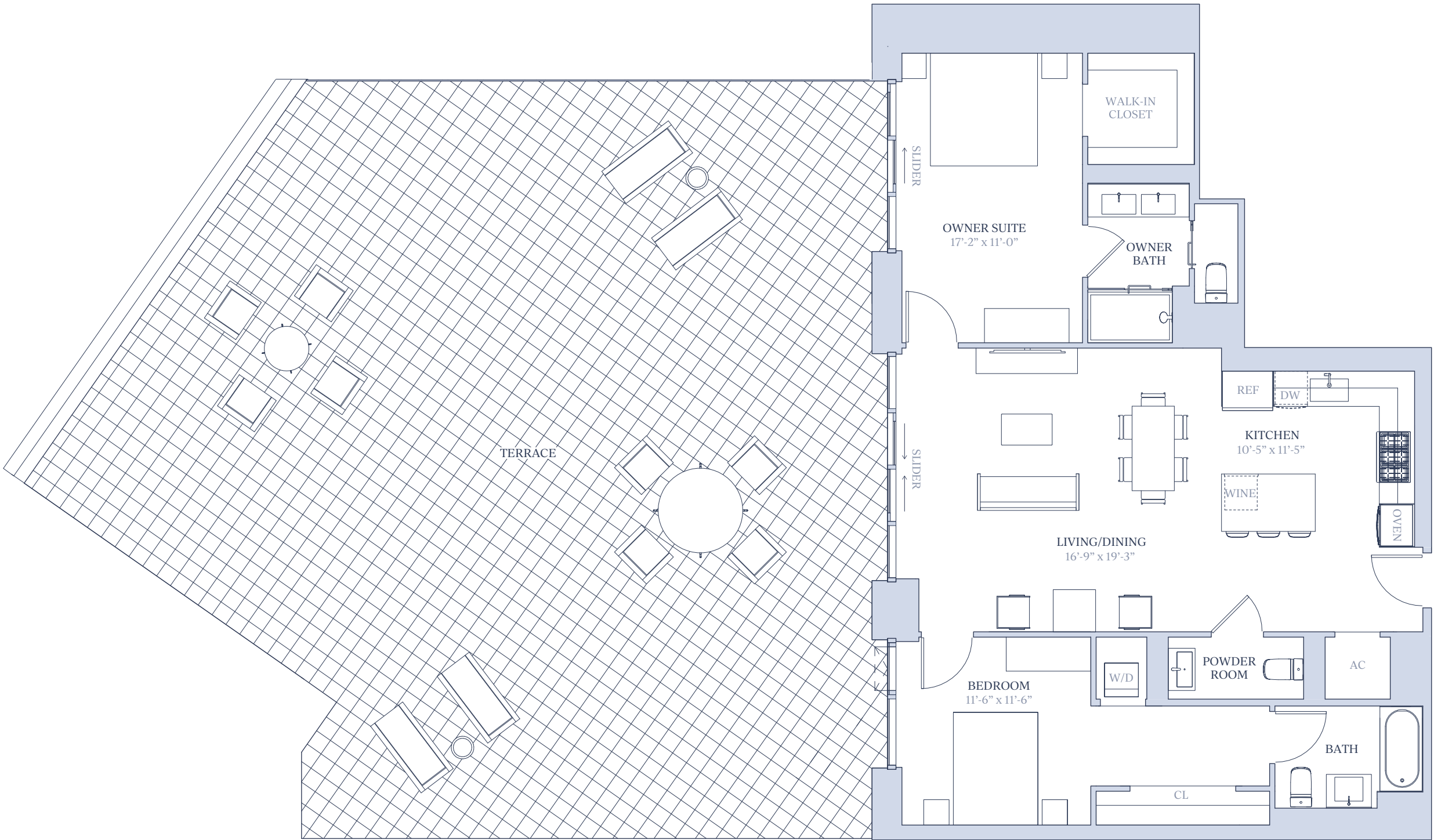


Central Avenue




4th Street North

1st Avenue South



SALES GALLERY LOCATED AT 465 CENTRAL AVENUE, ST. PETERSBURG, FL 33701 | 727-209-7848 | info@residences400central.com | residences400central.com

Stated square footages and dimensions are measured to the exterior boundaries of the exterior walls and the centerline of interior demising walls and in fact vary from the square footage and dimensions that would be determined by using the description and definition of the "Unit" set forth in the Declaration (which generally only includes the interior airspace between the perimeter walls and excludes all interior structural components and other common elements). This method is generally used in sales materials and is provided to allow a prospective buyer to compare the Units with units in other condominium projects that utilize the same method. For your reference, the area of the Unit determined in accordance with the unit boundaries as defined in the Declaration is disclosed in the Declaration. Measurements of rooms set forth on this floor plan are generally taken at the farthest points of each given room (as if the room were a perfect rectangle), without regard for any cutouts or variations. Accordingly, the area of the actual room will typically be smaller than the product obtained by multiplying the stated length and width. All dimensions are approximations and estimates which will vary with actual construction and may vary based on the location of the Unit in the building and the amount of shear wall tapering applicable to the Unit, and all floor plans, specifications and other development plans are subject to change and will not necessarily accurately reflect the final plans and specifications for the development. All depictions of appliances, wine cooler(s), counters, soffits, floor coverings and other matters of detail, including, without limitation, items of finish and decoration, are conceptual only and are not necessarily included in each Unit.



RESIDENCES
400 CENTRAL

RESIDENCE
2005-3905

3 BEDROOM
3 BATH

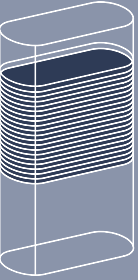
INTERIOR
1,921 SF

TERRACE
418 SF

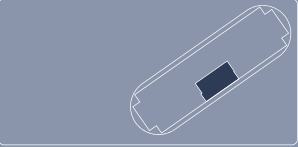
TOTAL
2,339 SF

▲
N

FLOORS
20-39

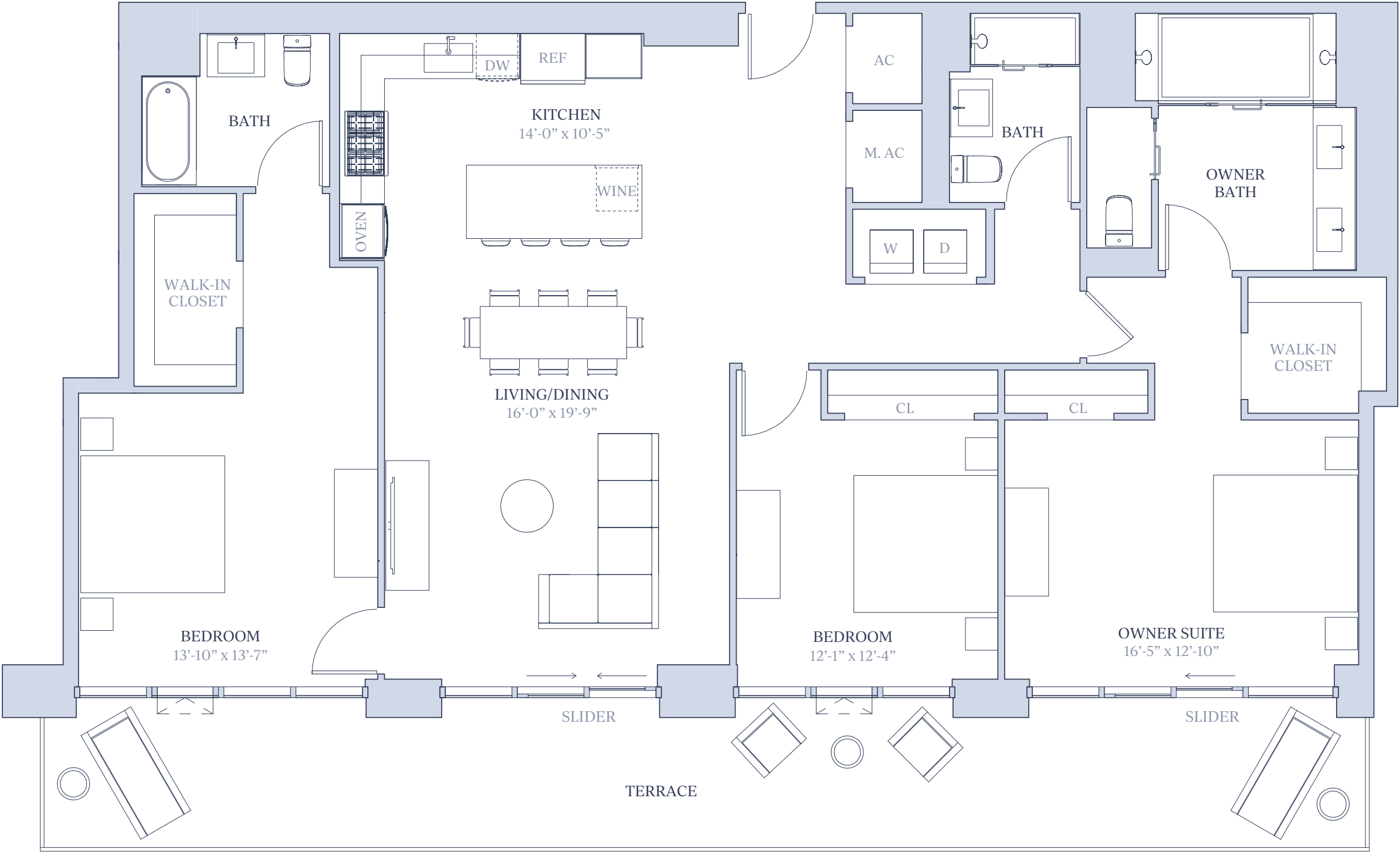


Central Avenue



4th Street North

1st Avenue South



SALES GALLERY LOCATED AT 465 CENTRAL AVENUE, ST. PETERSBURG, FL 33701 | 727-209-7848 | info@residences400central.com | residences400central.com

Stated square footages and dimensions are measured to the exterior boundaries of the exterior walls and the centerline of interior demising walls and in fact vary from the square footage and dimensions that would be determined by using the description and definition of the "Unit" set forth in the Declaration (which generally only includes the interior airspace between the perimeter walls and excludes all interior structural components and other common elements). This method is generally used in sales materials and is provided to allow a prospective buyer to compare the Units with units in other condominium projects that utilize the same method. For your reference, the area of the Unit determined in accordance with the unit boundaries as defined in the Declaration is disclosed in the Declaration. Measurements of rooms set forth on this floor plan are generally taken at the farthest points of each given room (as if the room were a perfect rectangle), without regard for any cutouts or variations. Accordingly, the area of the actual room will typically be smaller than the product obtained by multiplying the stated length and width. All dimensions are approximations and estimates which will vary with actual construction and may vary based on the location of the Unit in the building and the amount of shear wall tapering applicable to the Unit, and all floor plans, specifications and other development plans are subject to change and will not necessarily accurately reflect the final plans and specifications for the development. All depictions of appliances, wine cooler(s), counters, soffits, floor coverings and other matters of detail, including, without limitation, items of finish and decoration, are conceptual only and are not necessarily included in each Unit.

RESIDENCES

400 CENTRAL

SKY COLLECTION

PENTHOUSE

ONE

PH 4001-PH 4301

4 BEDROOM

3.5 BATH

INTERIOR

4,849 SF

TERRACE

1,522 SF

TOTAL

6,371 SF

N

FLOORS

40-43

Central Avenue

4th Street North

1st Avenue South

SALES GALLERY LOCATED AT 465 CENTRAL AVENUE, ST. PETERSBURG, FL 33701 | 727-209-7848 | info@residences400central.com | residences400central.com

Stated square footages and dimensions are measured to the exterior boundaries of the exterior walls and the centerline of interior demising walls and in fact vary from the square footage and dimensions that would be determined by using the description and definition of the “Unit” set forth in the Declaration (which generally only includes the interior airspace between the perimeter walls and excludes all interior structural components and other common elements). This method is generally used in sales materials and is provided to allow a prospective buyer to compare the Units with units in other condominium projects that utilize the same method. For your reference, the area of the Unit determined in accordance with the unit boundaries as defined in the Declaration is disclosed in the Declaration. Measurements of rooms set forth on this floor plan are generally taken at the farthest points of each given room (as if the room were a perfect rectangle), without regard for any cutouts or variations. Accordingly, the area of the actual room will typically be smaller than the product obtained by multiplying the stated length and width. All dimensions are approximations and estimates which will vary with actual construction and may vary based on the location of the Unit in the building and the amount of shear wall tapering applicable to the Unit, and all floor plans, specifications and other development plans are subject to change and will not necessarily accurately reflect the final plans and specifications for the development. All depictions of appliances, wine cooler(s), counters, soffits, floor coverings and other matters of detail, including, without limitation, items of finish and decoration, are conceptual only and are not necessarily included in each Unit.

RESIDENCES

400 CENTRAL

SKY COLLECTION

PENTHOUSE

THREE

PH 4003-PH 4303

4 BEDROOM

4.5 BATH

INTERIOR

4,237 SF

TERRACE

1,389 SF

TOTAL

5,626 SF

N

FLOORS

40-43

Central Avenue

4th Street North


1st Avenue South

The floor plan for Penthouse Three (PH 4003-PH 4303) is a large, irregularly shaped unit with a curved exterior wall on the right side. The layout includes the following rooms and features:

- Bedrooms:** Four bedrooms are located in the upper portion of the unit. Dimensions are: 14'-10" x 11'-1" (top left), 14'-0" x 10'-1" (top middle), 11'-6" x 13'-5" (top right), and 23'-7" x 19'-10" (bottom left, labeled as Owner Suite).
- Bathrooms:** There are four full bathrooms and one powder room. The Owner Suite includes an Owner Bath. A central area contains two full bathrooms and a powder room. A label "PROVISIONED FOR FUTURE WET BAR" is located near the central bathrooms.
- Living/Great Room:** A large open area (42'-8" x 17'-7") featuring a fireplace, large windows, and access to a terrace via a slider door.
- Kitchen & Dining:** The kitchen (15'-2" x 11'-8") includes a refrigerator (REF), dishwasher (DW), oven, and wine cooler (WINE). The dining area (25'-10" x 14'-4") has a large table and chairs.
- Entry & Storage:** An entry foyer leads into the unit. A large walk-in closet (19'-2" x 11'-1") is located near the entry. A laundry room with a washer/dryer (W/D) and a pantry are also present.
- Terraces:** Multiple terraces are located around the perimeter, accessible via slider doors. One terrace is specifically labeled "TERRACE" at the top left.
- Other Features:** The plan includes several closets (CL), air conditioning units (AC), and a gallery area.

SALES GALLERY LOCATED AT 465 CENTRAL AVENUE, ST. PETERSBURG, FL 33701 | 727-209-7848 | info@residences400central.com | residences400central.com

Stated square footages and dimensions are measured to the exterior boundaries of the exterior walls and the centerline of interior demising walls and in fact vary from the square footage and dimensions that would be determined by using the description and definition of the “Unit” set forth in the Declaration (which generally only includes the interior airspace between the perimeter walls and excludes all interior structural components and other common elements). This method is generally used in sales materials and is provided to allow a prospective buyer to compare the Units with units in other condominium projects that utilize the same method. For your reference, the area of the Unit determined in accordance with the unit boundaries as defined in the Declaration is disclosed in the Declaration. Measurements of rooms set forth on this floor plan are generally taken at the farthest points of each given room (as if the room were a perfect rectangle), without regard for any cutouts or variations. Accordingly, the area of the actual room will typically be smaller than the product obtained by multiplying the stated length and width. All dimensions are approximations and estimates which will vary with actual construction and may vary based on the location of the Unit in the building and the amount of shear wall tapering applicable to the Unit, and all floor plans, specifications and other development plans are subject to change and will not necessarily accurately reflect the final plans and specifications for the development. All depictions of appliances, wine cooler(s), counters, soffits, floor coverings and other matters of detail, including, without limitation, items of finish and decoration, are conceptual only and are not necessarily included in each Unit.



RESIDENCES
400 CENTRAL
SKY COLLECTION

PENTHOUSE
FOUR
PH 4004-PH 4304

3 BEDROOM
3 BATH

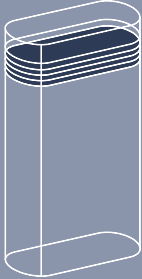
INTERIOR
2,385 SF

TERRACE
653 SF

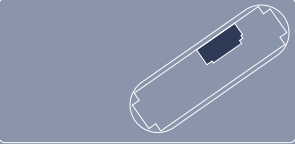
TOTAL
3,038 SF

▲
N

FLOORS
40-43

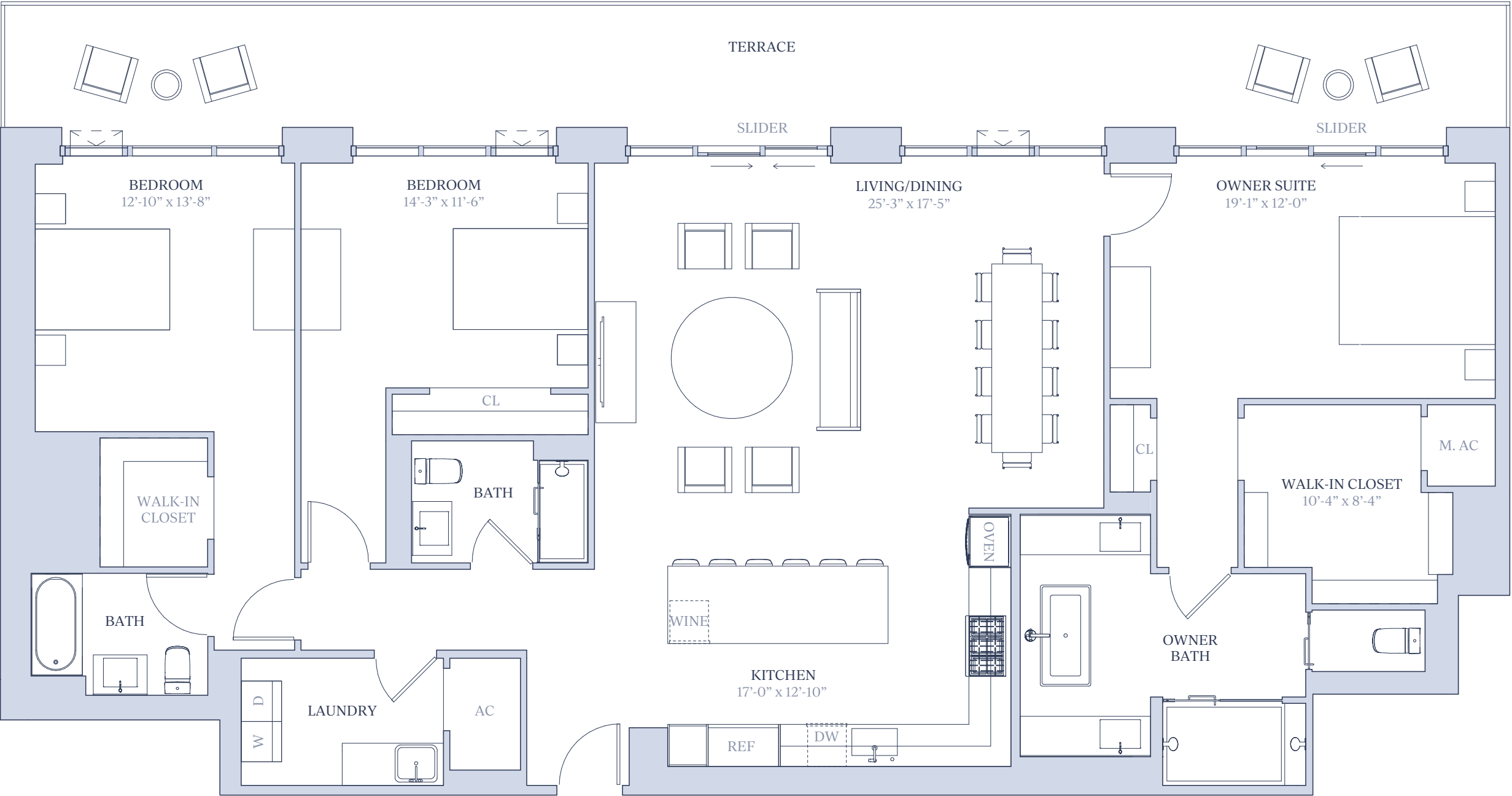


Central Avenue



4th Street North

1st Avenue South



SALES GALLERY LOCATED AT 465 CENTRAL AVENUE, ST. PETERSBURG, FL 33701 | 727-209-7848 | info@residences400central.com | residences400central.com

Stated square footages and dimensions are measured to the exterior boundaries of the exterior walls and the centerline of interior demising walls and in fact vary from the square footage and dimensions that would be determined by using the description and definition of the “Unit” set forth in the Declaration (which generally only includes the interior airspace between the perimeter walls and excludes all interior structural components and other common elements). This method is generally used in sales materials and is provided to allow a prospective buyer to compare the Units with units in other condominium projects that utilize the same method. For your reference, the area of the Unit determined in accordance with the unit boundaries as defined in the Declaration is disclosed in the Declaration. Measurements of rooms set forth on this floor plan are generally taken at the farthest points of each given room (as if the room were a perfect rectangle), without regard for any cutouts or variations. Accordingly, the area of the actual room will typically be smaller than the product obtained by multiplying the stated length and width. All dimensions are approximations and estimates which will vary with actual construction and may vary based on the location of the Unit in the building and the amount of shear wall tapering applicable to the Unit, and all floor plans, specifications and other development plans are subject to change and will not necessarily accurately reflect the final plans and specifications for the development. All depictions of appliances, wine cooler(s), counters, soffits, floor coverings and other matters of detail, including, without limitation, items of finish and decoration, are conceptual only and are not necessarily included in each Unit.

RESIDENCES

400 CENTRAL

SKY COLLECTION

PENTHOUSE

TWO

PH 4302

3 BEDROOM

3.5 BATH

INTERIOR

3,927 SF

TERRACE

807 SF

TOTAL

4,734 SF

N

FLOOR

43

Central Avenue

4th Street North

1st Avenue South

The floor plan for Penthouse Two, PH 4302, is a rectangular unit with a large terrace. The layout includes:

- Living/Dining/Great Room:** 54'-0" x 15'-3", featuring a large circular dining table and a sofa.
- Kitchen:** 14'-9" x 12'-10", equipped with an oven, refrigerator (REF), dishwasher (DW), and a wine cooler.
- Pantry:** Adjacent to the kitchen.
- Laundry:** Located near the powder room.
- Powder Room:** A small bathroom near the entry foyer.
- Entry Foyer:** The main entrance area.
- Bedrooms:** Three bedrooms are shown, with dimensions 15'-1" x 14'-0", 13'-6" x 12'-7", and 13'-6" x 12'-7". Each has a walk-in closet.
- Bathrooms:** Three full bathrooms, including an owner's suite bathroom.
- Owner's Suite:** 24'-9" x 19'-9", featuring a large walk-in closet (33'-6" x 11'-1") and a private bathroom.
- Terrace:** Accessible via sliders from the living area and one of the bedrooms.

SALES GALLERY LOCATED AT 465 CENTRAL AVENUE, ST. PETERSBURG, FL 33701 | 727-209-7848 | info@residences400central.com | residences400central.com

Stated square footages and dimensions are measured to the exterior boundaries of the exterior walls and the centerline of interior demising walls and in fact vary from the square footage and dimensions that would be determined by using the description and definition of the “Unit” set forth in the Declaration (which generally only includes the interior airspace between the perimeter walls and excludes all interior structural components and other common elements). This method is generally used in sales materials and is provided to allow a prospective buyer to compare the Units with units in other condominium projects that utilize the same method. For your reference, the area of the Unit determined in accordance with the unit boundaries as defined in the Declaration is disclosed in the Declaration. Measurements of rooms set forth on this floor plan are generally taken at the farthest points of each given room (as if the room were a perfect rectangle), without regard for any cutouts or variations. Accordingly, the area of the actual room will typically be smaller than the product obtained by multiplying the stated length and width. All dimensions are approximations and estimates which will vary with actual construction and may vary based on the location of the Unit in the building and the amount of shear wall tapering applicable to the Unit, and all floor plans, specifications and other development plans are subject to change and will not necessarily accurately reflect the final plans and specifications for the development. All depictions of appliances, wine cooler(s), counters, soffits, floor coverings and other matters of detail, including, without limitation, items of finish and decoration, are conceptual only and are not necessarily included in each Unit.