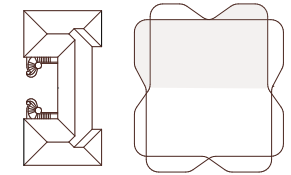


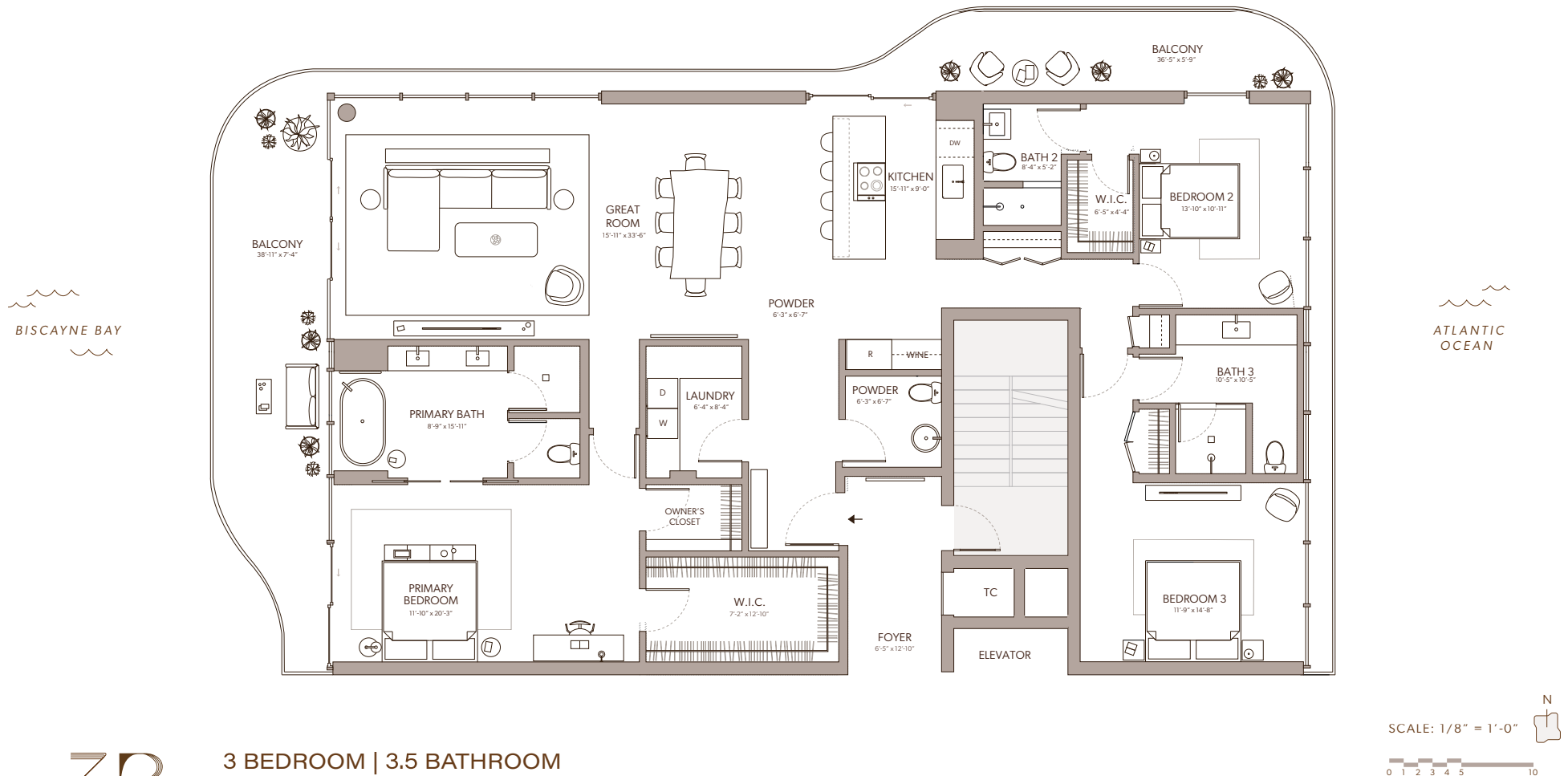
# TWENTY-NINE INDIAN CREEK

2901 Indian Creek Drive

Indian Creek Drive



29th Street

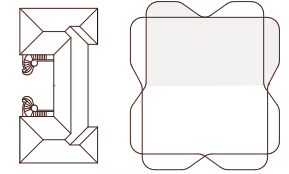


Sketches and illustrations are artist's renderings. Details and field variations are subject to change. All dimensions are approximate and all floor plans and development plans are subject to change. There are various methods for calculating the total square footage of a condominium unit, and depending on the method of calculation, the quoted square footage of a condominium unit may vary by more than a nominal amount. The dimensions stated in this brochure are measured to the exterior boundaries of the exterior walls and the centerline of interior demising walls and, in fact, are larger than the dimensions of the "Unit" as defined in the Declaration of Condominium for 2901 IC CONDOMINIUM which is measured using interior measurements. Interior square footage calculation includes the Foyer which is a Limited Common Element to the specified Unit.

# TWENTY-NINE INDIAN CREEK

2901 Indian Creek Drive

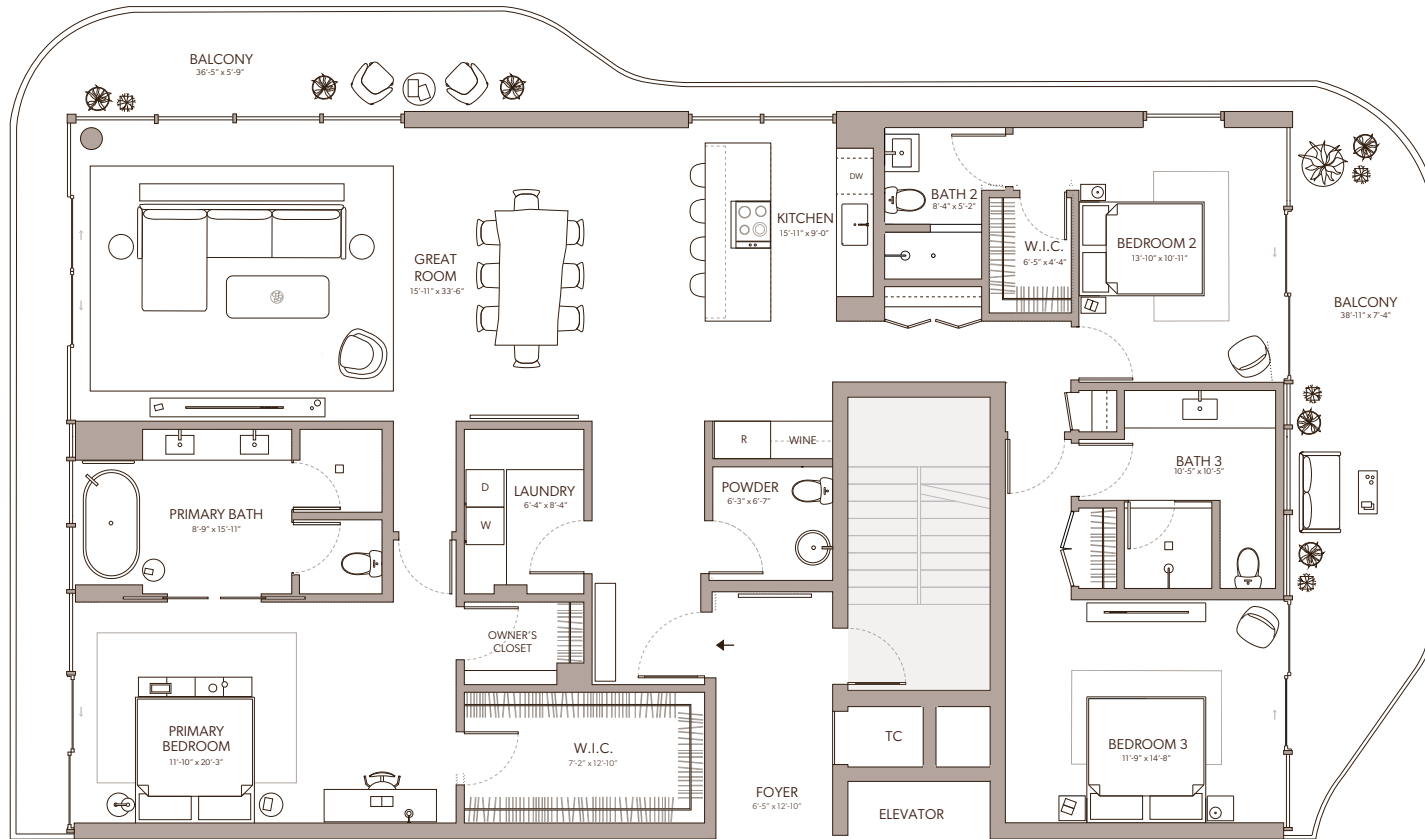
Indian Creek Drive



29th Street

BISCAYNE BAY

ATLANTIC OCEAN



## 4B

### 3 BEDROOM | 3.5 BATHROOM

Interior: 2,301 sq ft | 214 sq m

Balcony: 589sq ft | 55 sq m

Total: 2,890 sq ft | 269 sq m

SCALE: 1/8" = 1'-0"

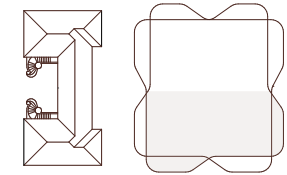


Sketches and illustrations are artist's renderings. Details and field variations are subject to change. All dimensions are approximate and all floor plans and development plans are subject to change. There are various methods for calculating the total square footage of a condominium unit, and depending on the method of calculation, the quoted square footage of a condominium unit may vary by more than a nominal amount. The dimensions stated in this brochure are measured to the exterior boundaries of the exterior walls and the centerline of interior demising walls and, in fact, are larger than the dimensions of the "Unit" as defined in the Declaration of Condominium for 2901 IC CONDOMINIUM which is measured using interior measurements. Interior square footage calculation includes the Foyer which is a Limited Common Element to the specified Unit.

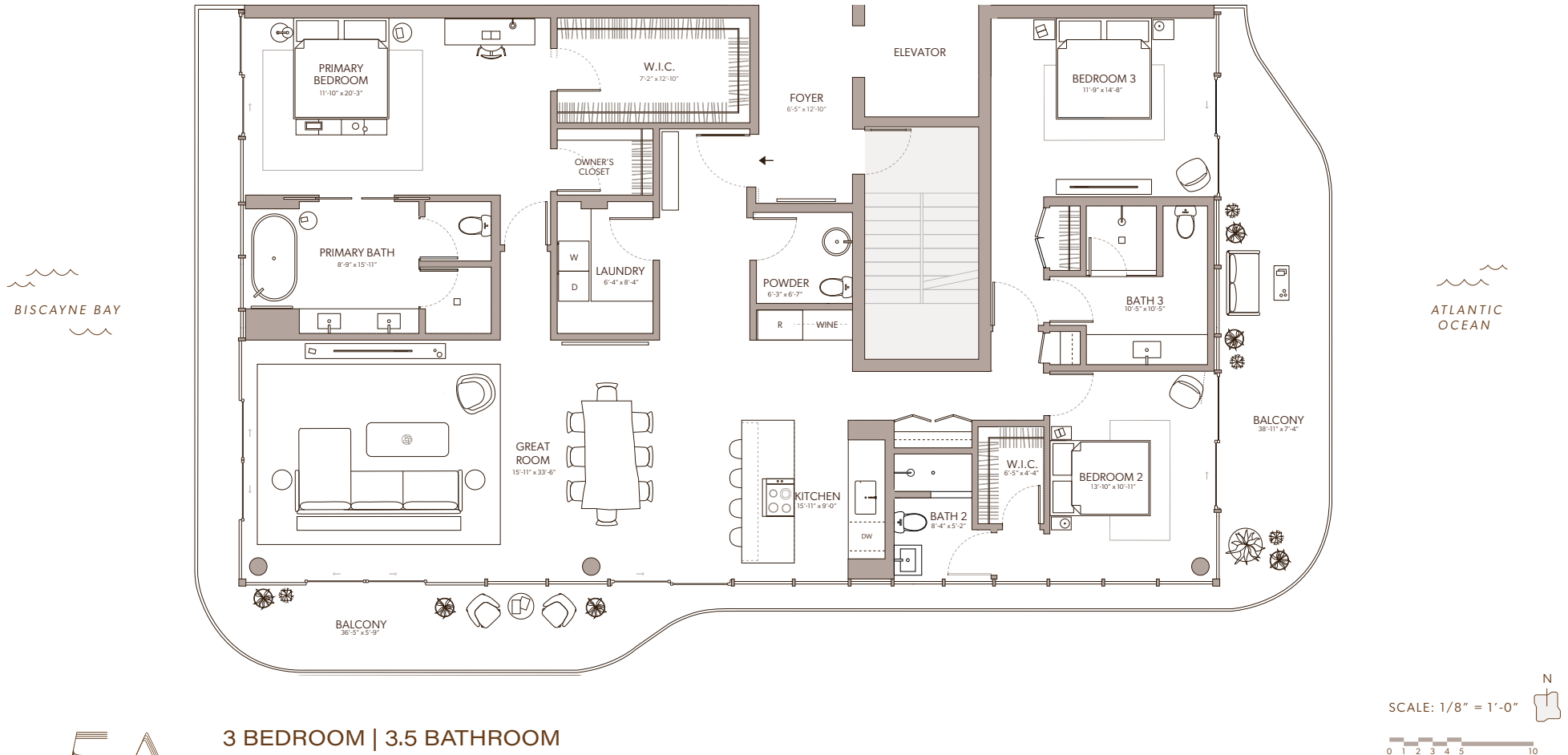
# TWENTY-NINE INDIAN CREEK

2901 Indian Creek Drive

Indian Creek Drive



29th Street

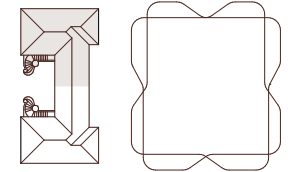


Sketches and illustrations are artist's renderings. Details and field variations are subject to change. All dimensions are approximate and all floor plans and development plans are subject to change. There are various methods for calculating the total square footage of a condominium unit, and depending on the method of calculation, the quoted square footage of a condominium unit may vary by more than a nominal amount. The dimensions stated in this brochure are measured to the exterior boundaries of the exterior walls and the centerline of interior demising walls and, in fact, are larger than the dimensions of the "Unit" as defined in the Declaration of Condominium for 2901 IC CONDOMINIUM which is measured using interior measurements. Interior square footage calculation includes the Foyer which is a Limited Common Element to the specified Unit.

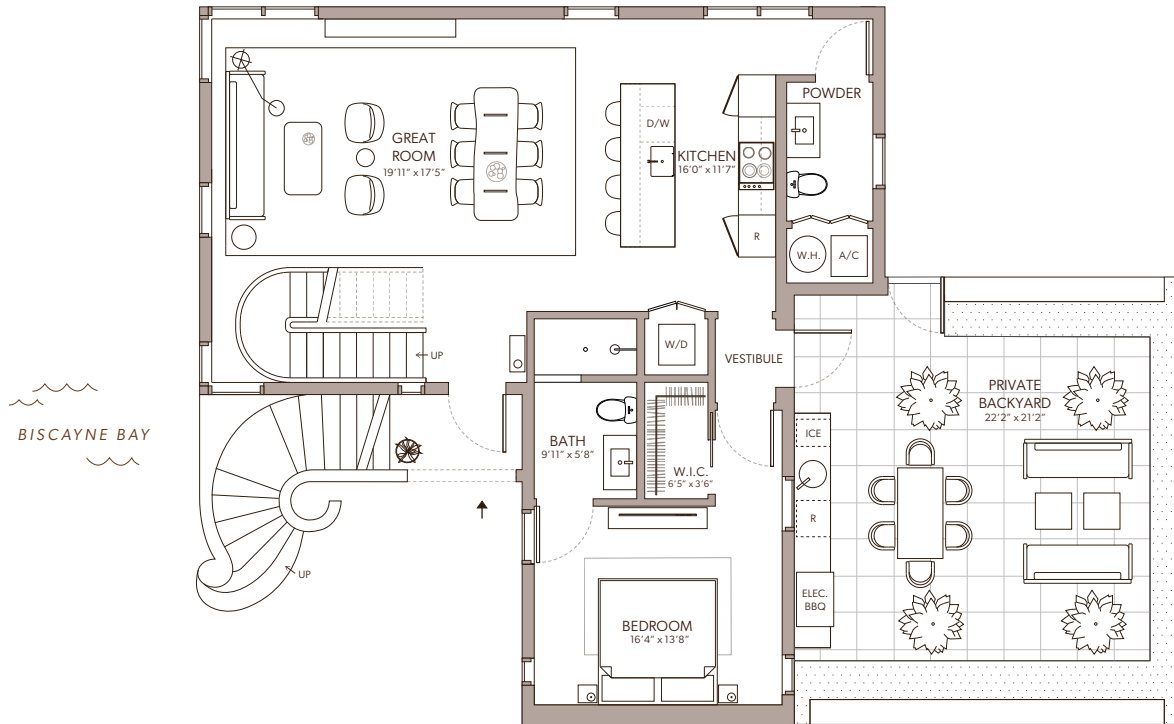
# TWENTY-NINE INDIAN CREEK

2901 Indian Creek Drive

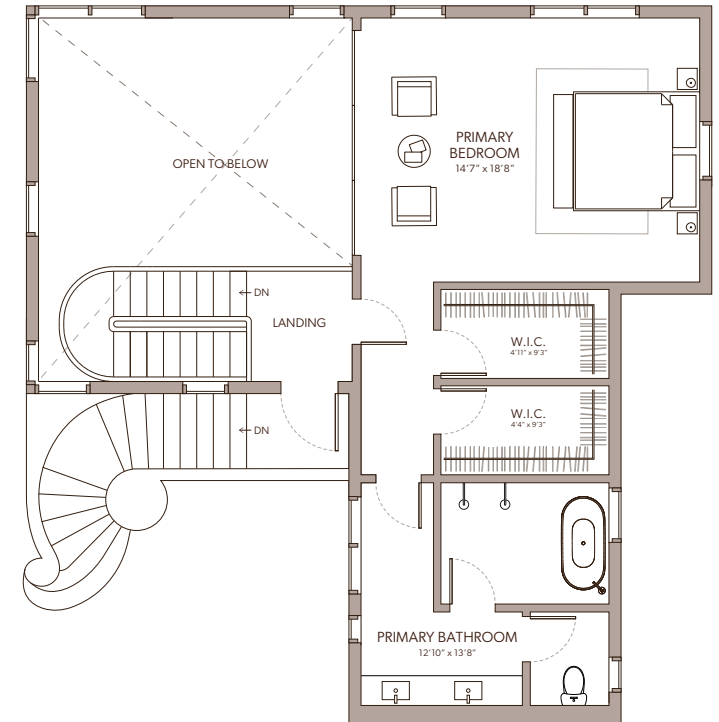
Indian Creek Drive



29th Street



GROUND FLOOR



SECOND FLOOR

THB

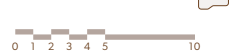
## 2 BEDROOM | 2.5 BATHROOM

Interior: 1,750 sq ft | 163 sq m

Private Terrace: 500 sq ft | 46 sq m

Total: 2,250 sq ft | 209 sq m

SCALE: 1/8" = 1'-0"



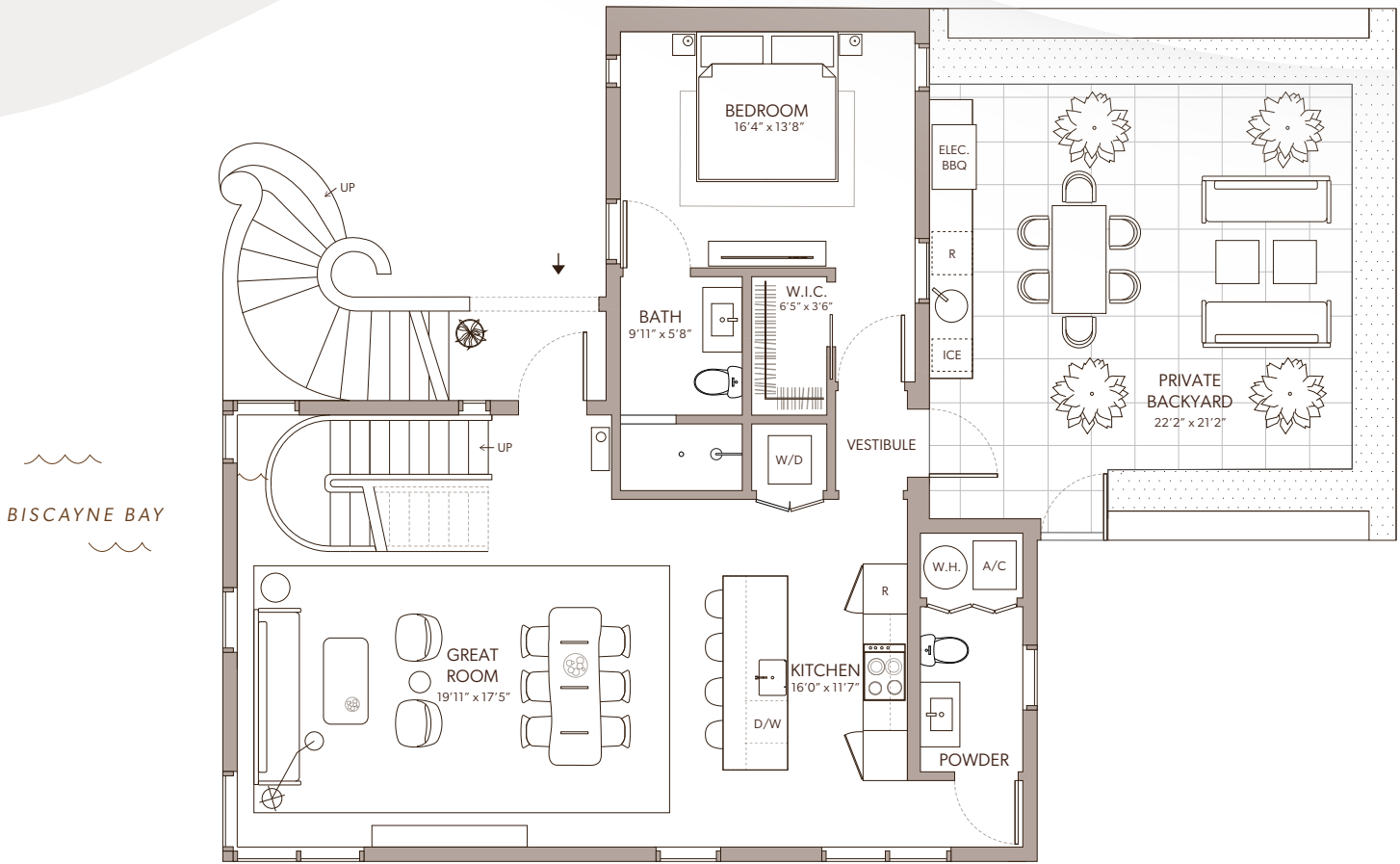
Sketches and illustrations are artist's renderings. Details and field variations are subject to change. All dimensions are approximate and all floor plans and development plans are subject to change. There are various methods for calculating the total square footage of a condominium unit, and depending on the method of calculation, the quoted square footage of a condominium unit may vary by more than a nominal amount. The dimensions stated in this brochure are measured to the exterior boundaries of the exterior walls and the centerline of interior demising walls and, in fact, are larger than the dimensions of the "Unit" as defined in the Declaration of Condominium for 2901 IC CONDOMINIUM which is measured using interior measurements. Interior square footage calculation includes the Foyer which is a Limited Common Element to the specified Unit.



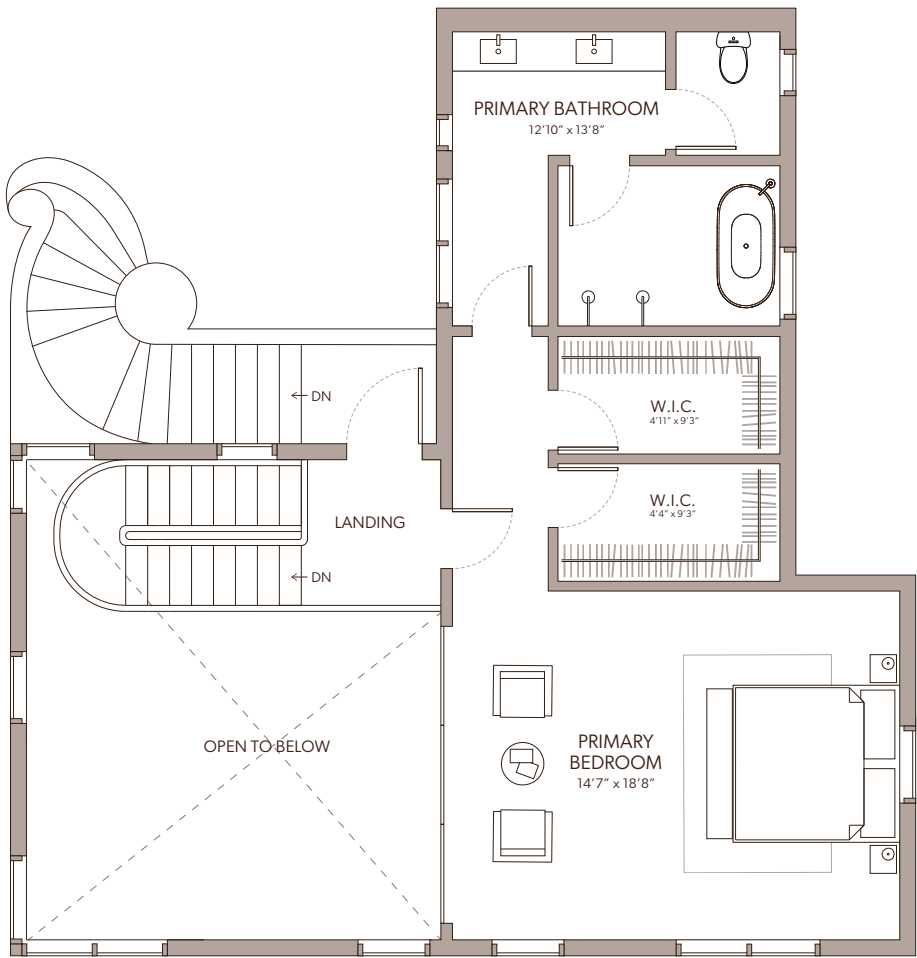
# TWENTY-NINE INDIAN CREEK

2901 Indian Creek Drive

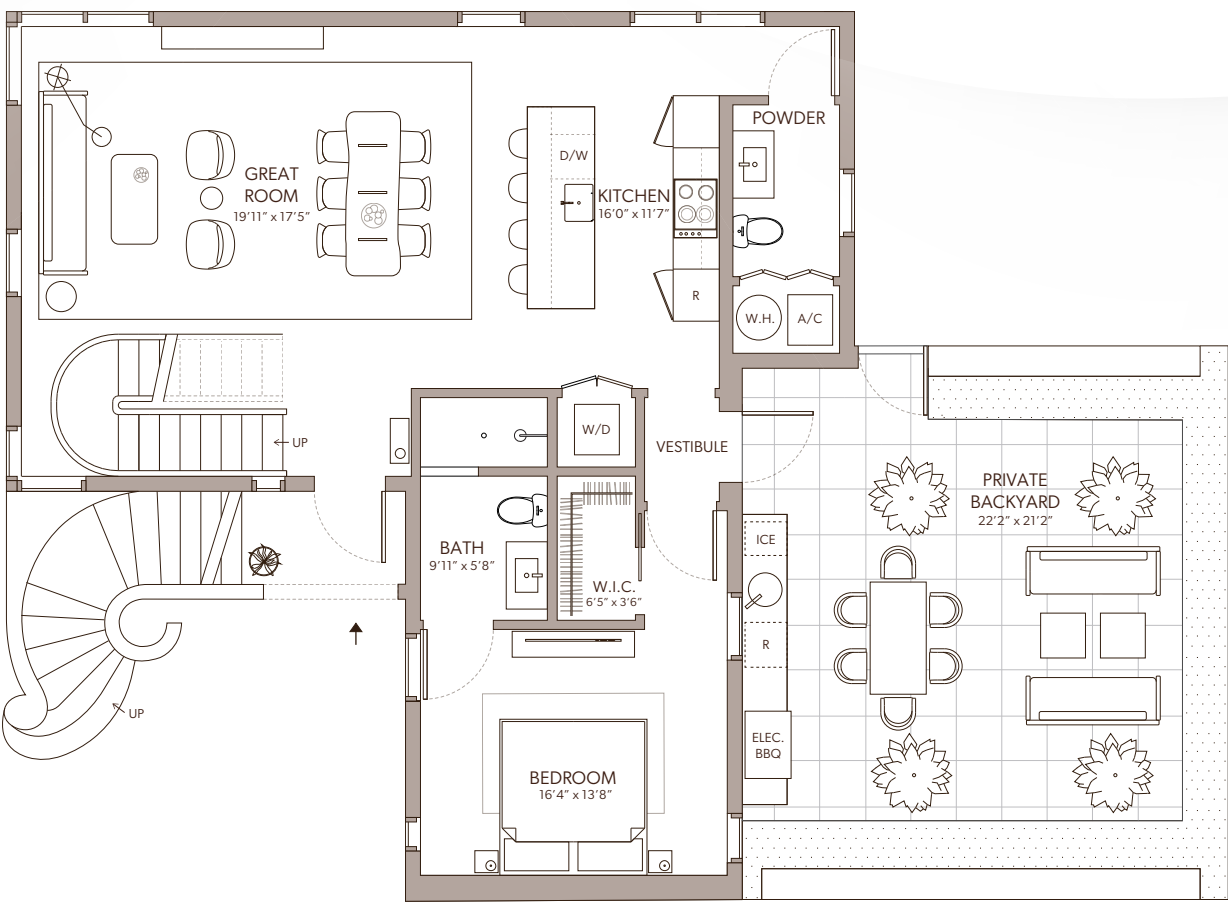
PROJECT COMPLETION | JULY 2025



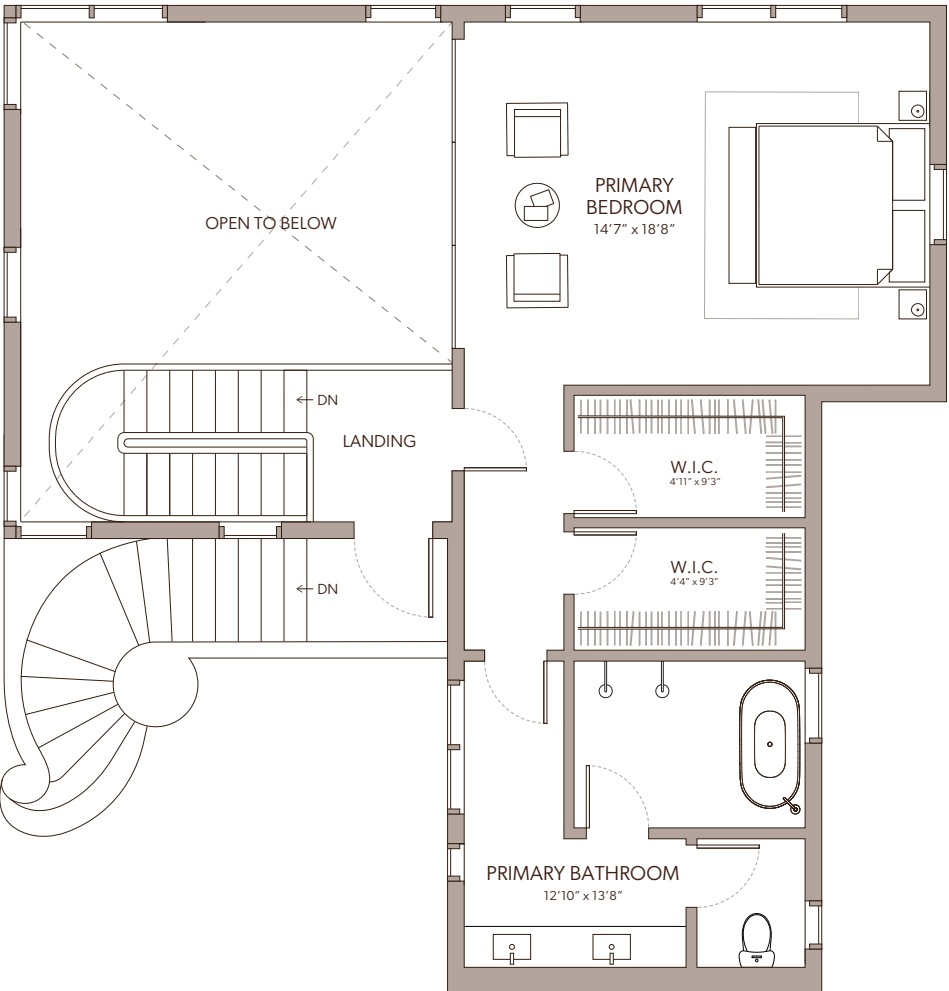
GROUND FLOOR



SECOND FLOOR



GROUND FLOOR

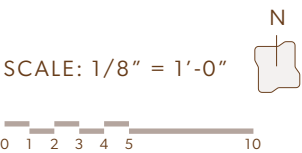


SECOND FLOOR

THA

2 BEDROOM | 2.5 BATHROOM

Interior: 1,750 sq ft | 163 sq m  
Private Terrace: 500 sq ft | 46 sq m  
Total: 2,250 sq ft | 209 sq m



THB

2 BEDROOM | 2.5 BATHROOM

Interior: 1,750 sq ft | 163 sq m  
Private Terrace: 500 sq ft | 46 sq m  
Total: 2,250 sq ft | 209 sq m

