

# Selene

OCEANFRONT RESIDENCES  
FORT LAUDERDALE

---

East Tower — Beachwalk Residence

# EAST TOWER BEACHWALK RESIDENCE

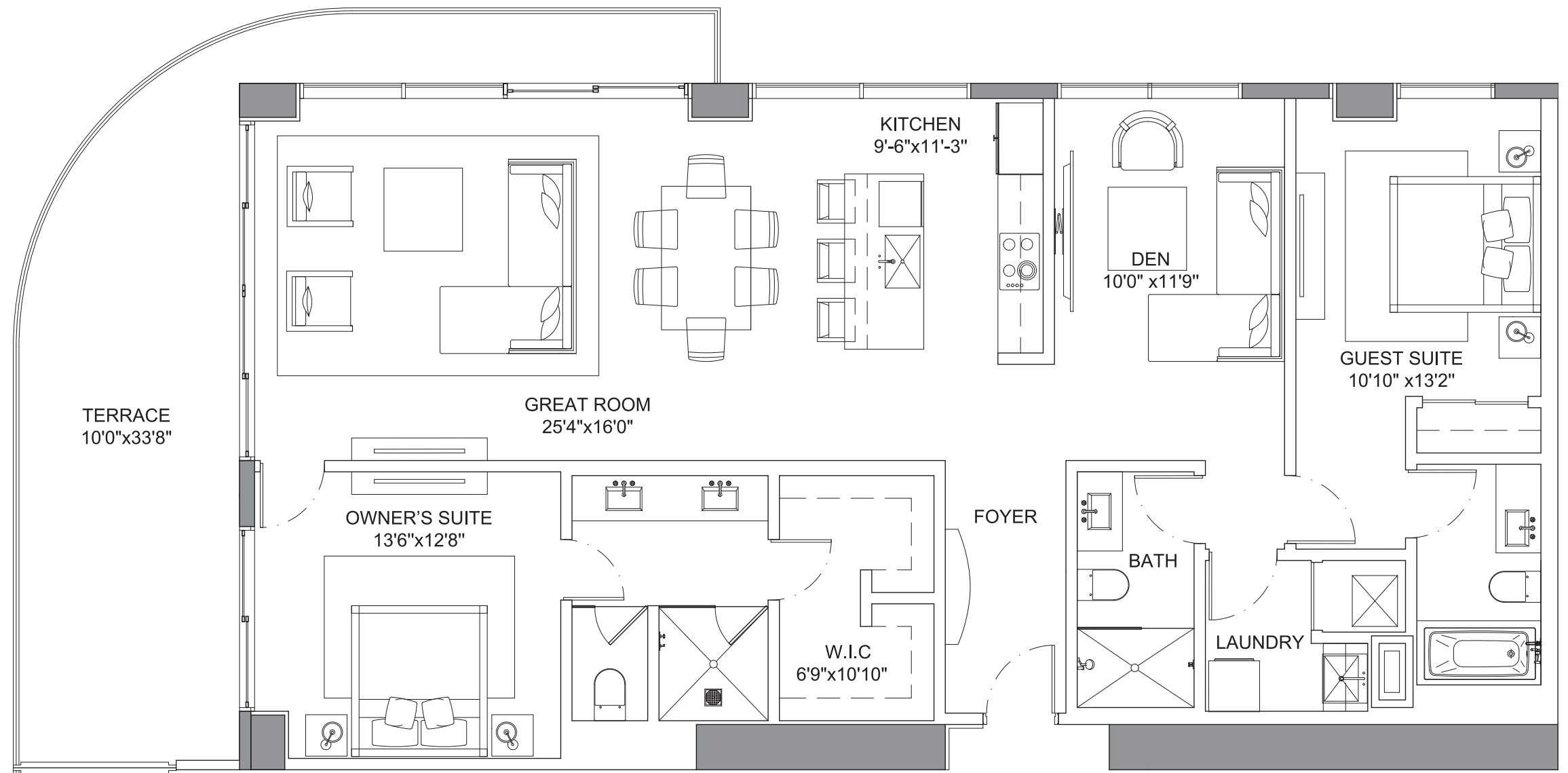
Selene

OCEANFRONT RESIDENCES  
FORT LAUDERDALE

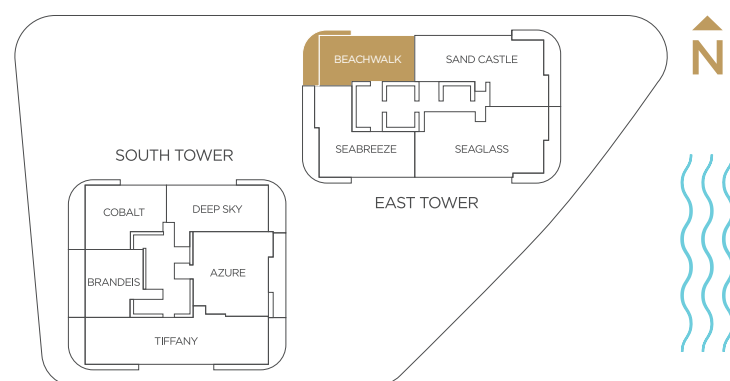
## Specifications

2 Bedrooms | 3 Bathrooms | Den

Interior	1,680 SQFT
Exterior	358 SQFT
Total Area	2,038 SQFT



\*Preliminary Draft - Version 1

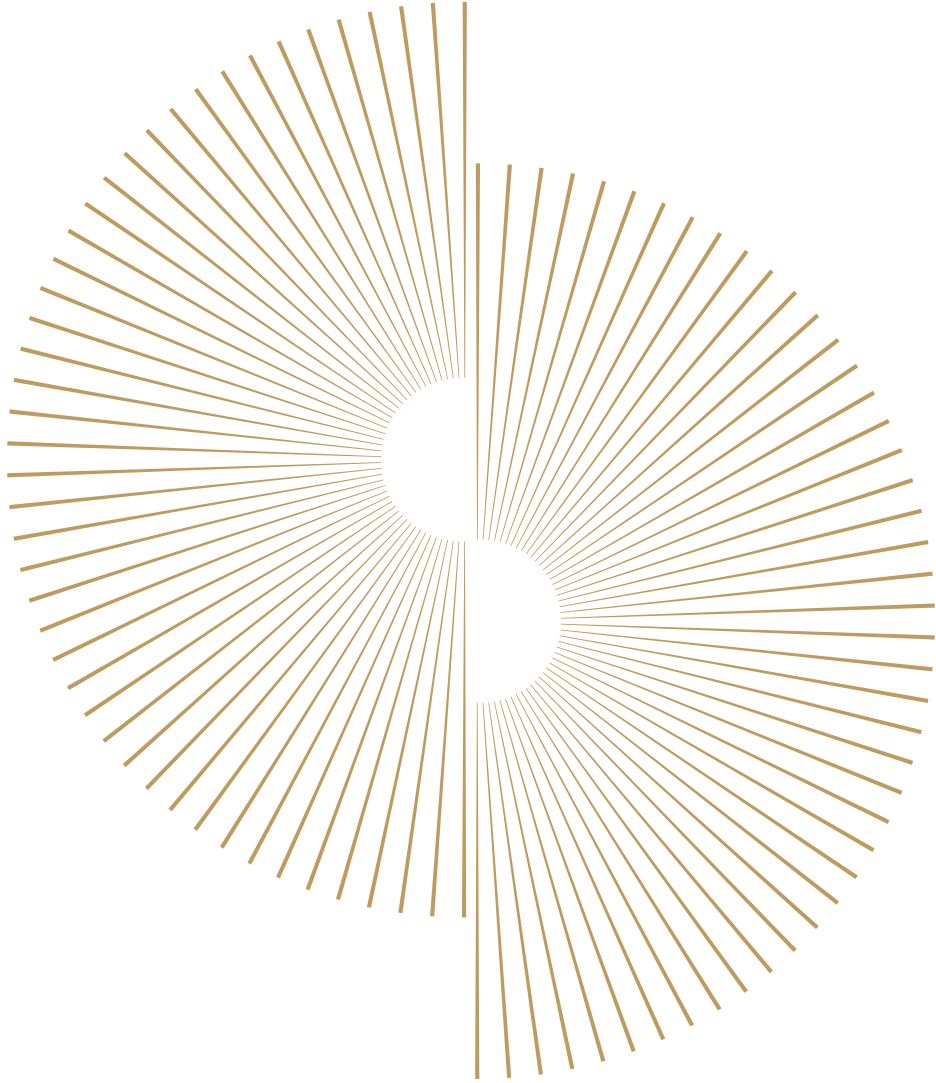


PRESENTED BY  
**KOLTER**

ORAL REPRESENTATIONS CANNOT BE RELIED UPON AS CORRECTLY STATING REPRESENTATIONS OF THE SELLER. FOR CORRECT REPRESENTATIONS, MAKE REFERENCE TO THIS BROCHURE AND TO THE DOCUMENTS REQUIRED BY SECTION 718.503, FLORIDA STATUTES, TO BE FURNISHED BY A SELLER TO A BUYER OR LESSEE. Prices, terms and availability are subject to change at any time without notice. All dimensions are approximate. The floorplan is subject to change without notice. The seller reserves the absolute right, in its sole judgement and discretion, to substitute appliances, materials, fixtures and equipment of equal or greater value for those specified. There are various methods of calculating the total square footage of a condominium unit, and depending on the method of calculation, the quoted square footage of a condominium unit may vary more than a normal amount. The total condominium square footages as shown in this brochure are based on the "Architectural Method" of measurement which measures the exterior perimeter of the condominium unit, and also includes interior columns and fifty percent of demising walls. The method for calculating residential square footage used in marketing materials is different than the method used for calculating residential square footage in the condominium documents. Please see the Declaration of Condominium for more information. The model shown includes options and upgrades that are not a part of a base residence pricing. © The Kolter Group, March, 2021.



Preview Gallery located in the Douglas Elliman office in the Ritz-Carlton  
1 N. Fort Lauderdale Beach Blvd., Fort Lauderdale, FL 33304



# Selene

OCEANFRONT RESIDENCES  
FORT LAUDERDALE

---

East Tower — Sand Castle Residence

# EAST TOWER SAND CASTLE RESIDENCE

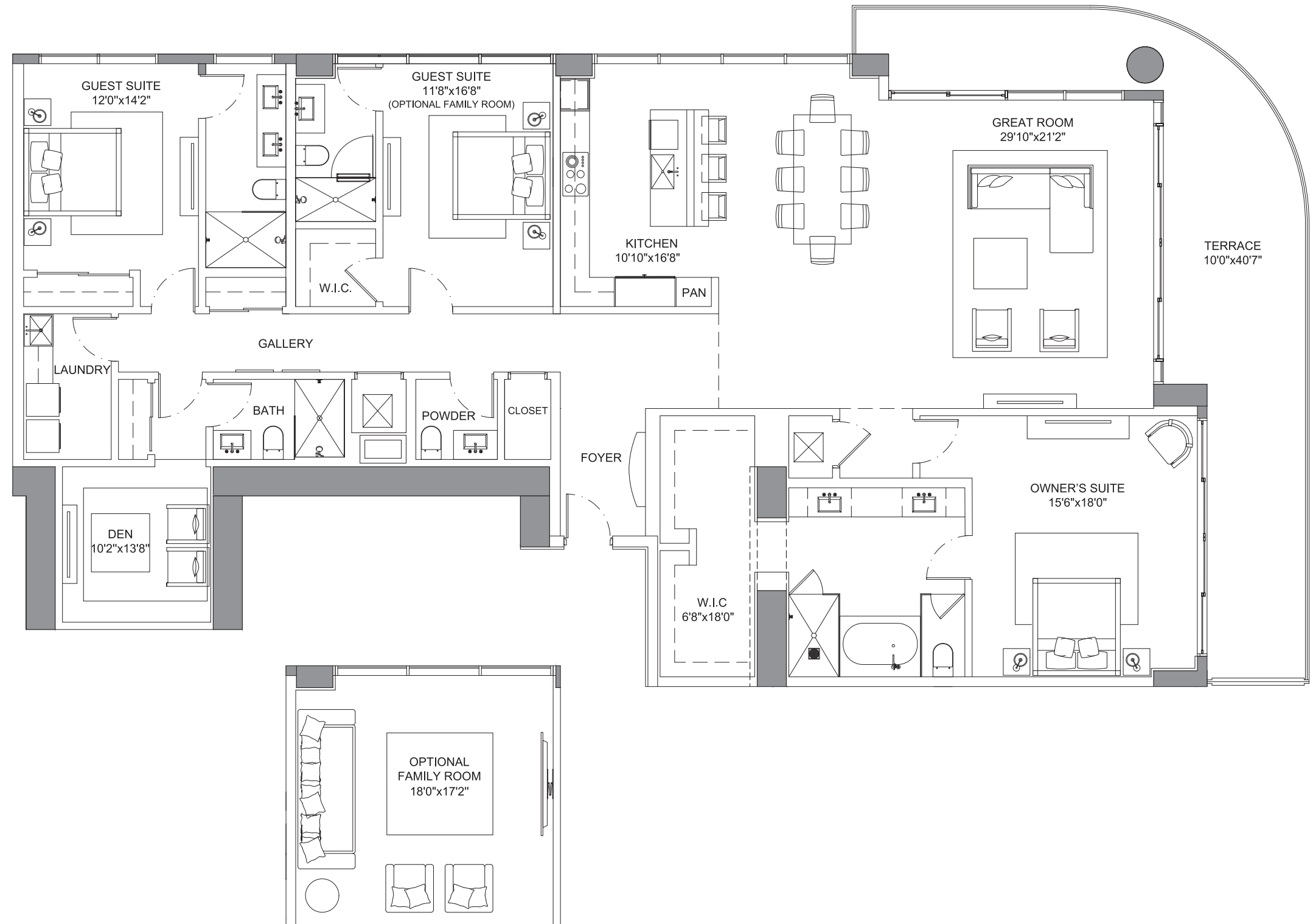
Selene

OCEANFRONT RESIDENCES  
FORT LAUDERDALE

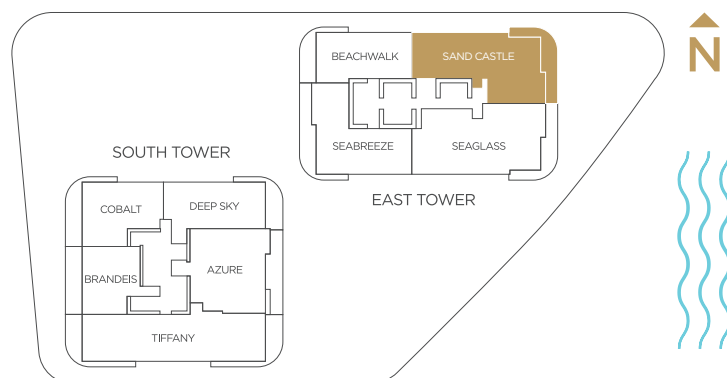
## Specifications

3 Bedrooms | 4.5 Bathrooms | Den

Interior	2,981 SQFT
Exterior	473 SQFT
Total Area	3,454 SQFT



\*Preliminary Draft - Version 1

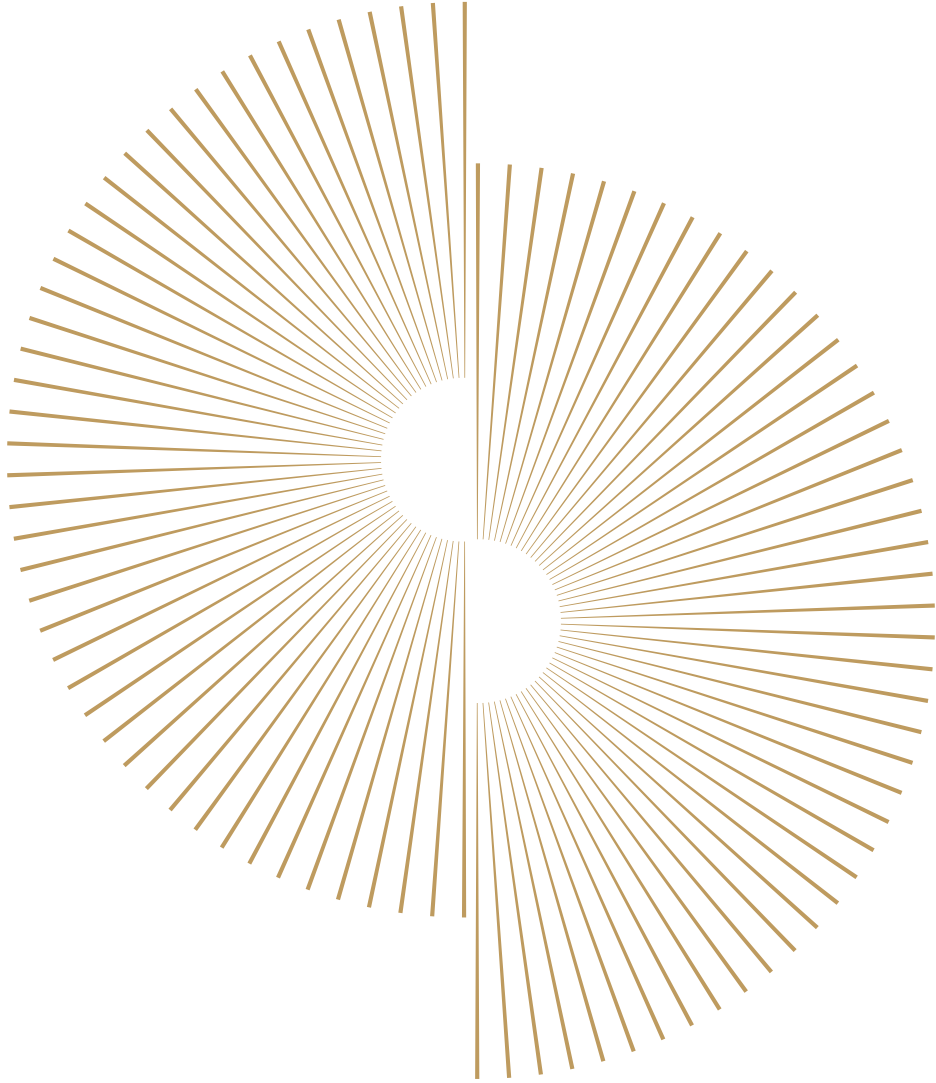


PRESENTED BY  
**KOLTER**

ORAL REPRESENTATIONS CANNOT BE RELIED UPON AS CORRECTLY STATING REPRESENTATIONS OF THE SELLER. FOR CORRECT REPRESENTATIONS, MAKE REFERENCE TO THIS BROCHURE AND TO THE DOCUMENTS REQUIRED BY SECTION 718.503, FLORIDA STATUTES, TO BE FURNISHED BY A SELLER TO A BUYER OR LESSEE. Prices, terms and availability are subject to change at any time without notice. All dimensions are approximate. The floorplan is subject to change without notice. The seller reserves the absolute right, in its sole judgement and discretion, to substitute appliances, materials, fixtures and equipment of equal or greater value for those specified. There are various methods of calculating the total square footage of a condominium unit, and depending on the method of calculation, the quoted square footage of a condominium unit may vary more than a normal amount. The total condominium square footages as shown in this brochure are based on the "Architectural Method" of measurement which measures the exterior perimeter of the condominium unit, and also includes interior columns and fifty percent of demising walls. The method for calculating residential square footage used in marketing materials is different than the method used for calculating residential square footage in the condominium documents. Please see the Declaration of Condominium for more information. The model shown includes options and upgrades that are not a part of a base residence pricing. © The Kolter Group, March, 2021.



Preview Gallery located in the Douglas Elliman office in the Ritz-Carlton  
1 N. Fort Lauderdale Beach Blvd., Fort Lauderdale, FL 33304



# Selene

OCEANFRONT RESIDENCES  
FORT LAUDERDALE

---

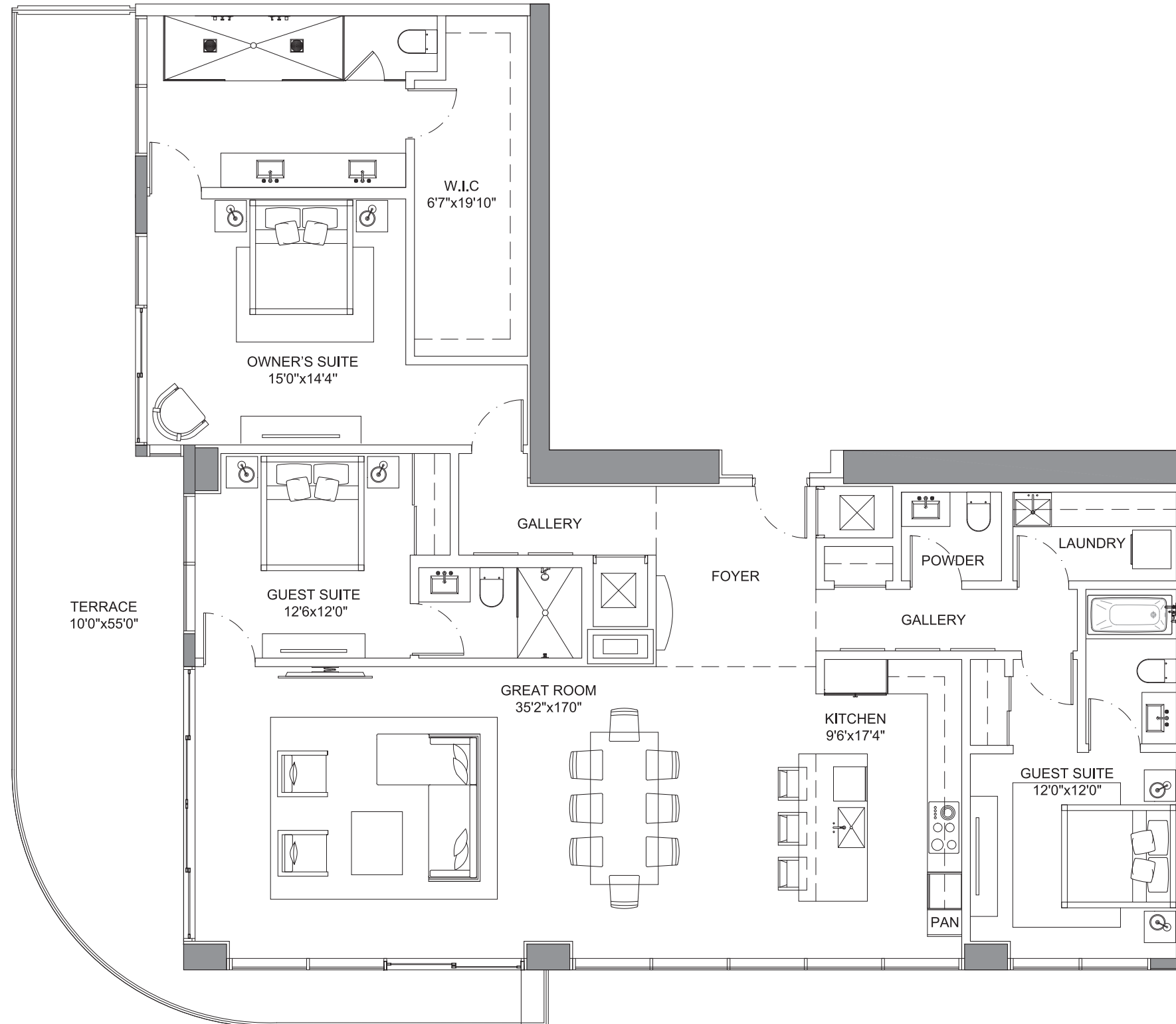
East Tower — Seabreeze Residence

# EAST TOWER SEABREEZE RESIDENCE

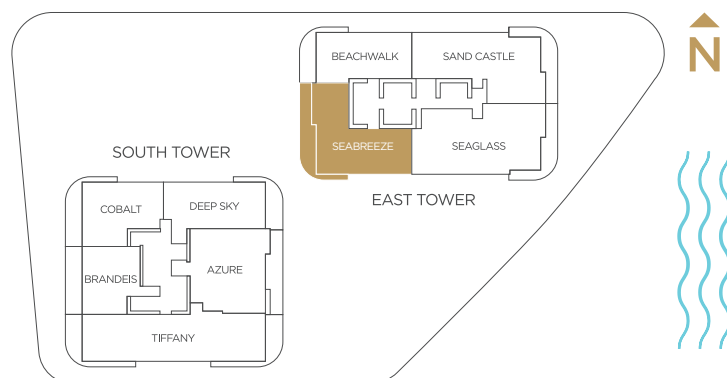
## Specifications

3 Bedrooms | 3.5 Bathrooms

Interior	2,285 SQFT
Exterior	543 SQFT
Total Area	2,828 SQFT



\*Preliminary Draft - Version 1



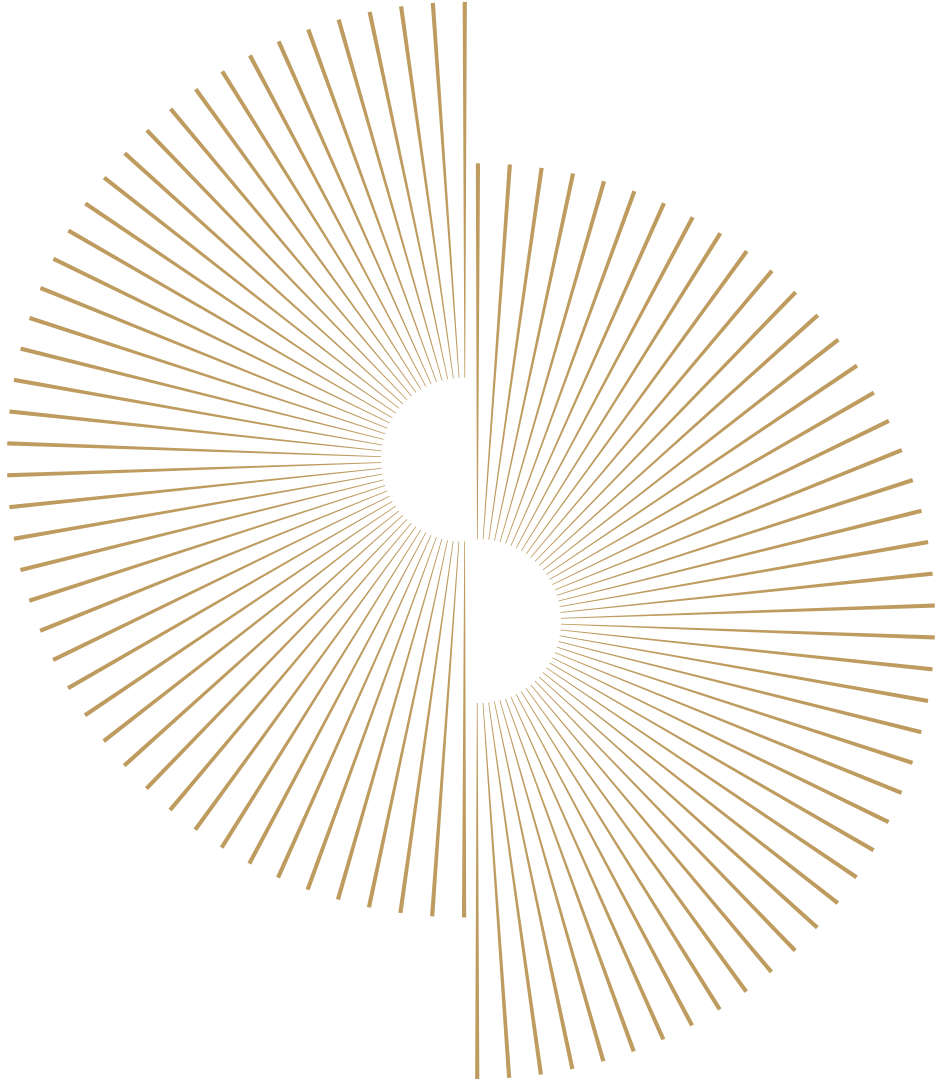
PRESENTED BY  
**KOLTER**

ORAL REPRESENTATIONS CANNOT BE RELIED UPON AS CORRECTLY STATING REPRESENTATIONS OF THE SELLER. FOR CORRECT REPRESENTATIONS, MAKE REFERENCE TO THIS BROCHURE AND TO THE DOCUMENTS REQUIRED BY SECTION 718.503, FLORIDA STATUTES, TO BE FURNISHED BY A SELLER TO A BUYER OR LESSEE. Prices, terms and availability are subject to change at any time without notice. All dimensions are approximate. The floorplan is subject to change without notice. The seller reserves the absolute right, in its sole judgement and discretion, to substitute appliances, materials, fixtures and equipment of equal or greater value for those specified. There are various methods of calculating the total square footage of a condominium unit, and depending on the method of calculation, the quoted square footage of a condominium unit may vary more than a normal amount. The total condominium square footages as shown in this brochure are based on the "Architectural Method" of measurement which measures the exterior perimeter of the condominium unit, and also includes interior columns and fifty percent of demising walls. The method for calculating residential square footage used in marketing materials is different than the method used for calculating residential square footage in the condominium documents. Please see the Declaration of Condominium for more information. The model shown includes options and upgrades that are not a part of a base residence pricing. © The Kolter Group, March, 2021.





Preview Gallery located in the Douglas Elliman office in the Ritz-Carlton  
1 N. Fort Lauderdale Beach Blvd., Fort Lauderdale, FL 33304



# Selene

OCEANFRONT RESIDENCES  
FORT LAUDERDALE

---

East Tower — Seaglass Residence

# EAST TOWER SEAGLASS RESIDENCE

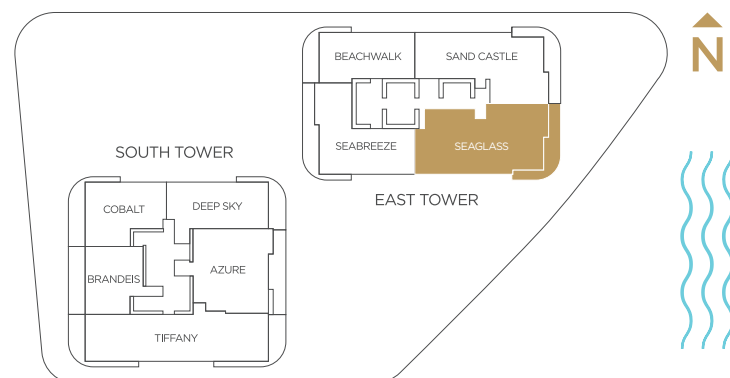
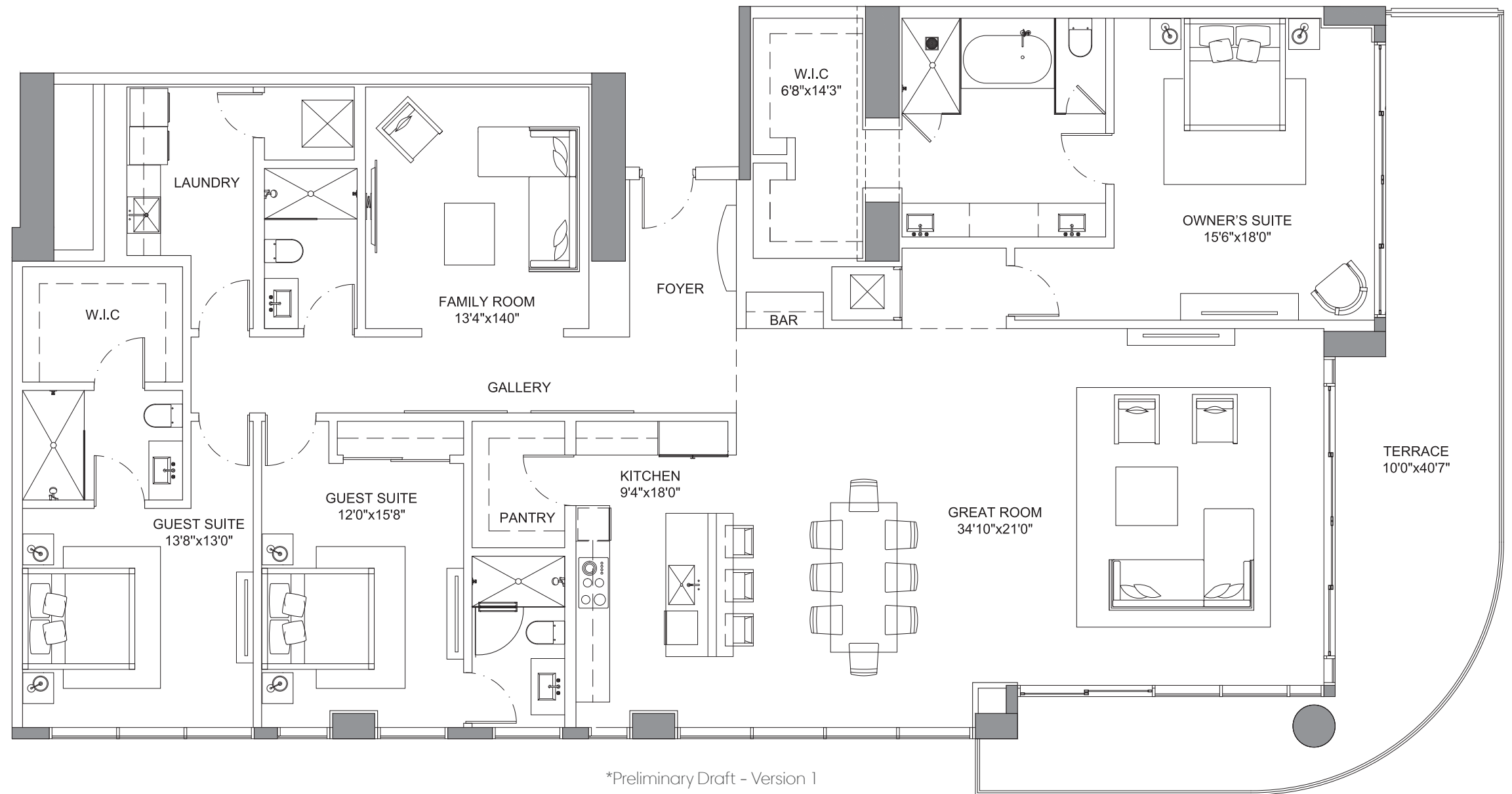
Selene

OCEANFRONT RESIDENCES  
FORT LAUDERDALE

## Specifications

3 Bedrooms | 4 Bathrooms | Family Room

Interior	3,127 SQFT
Exterior	473 SQFT
Total Area	3,600 SQFT



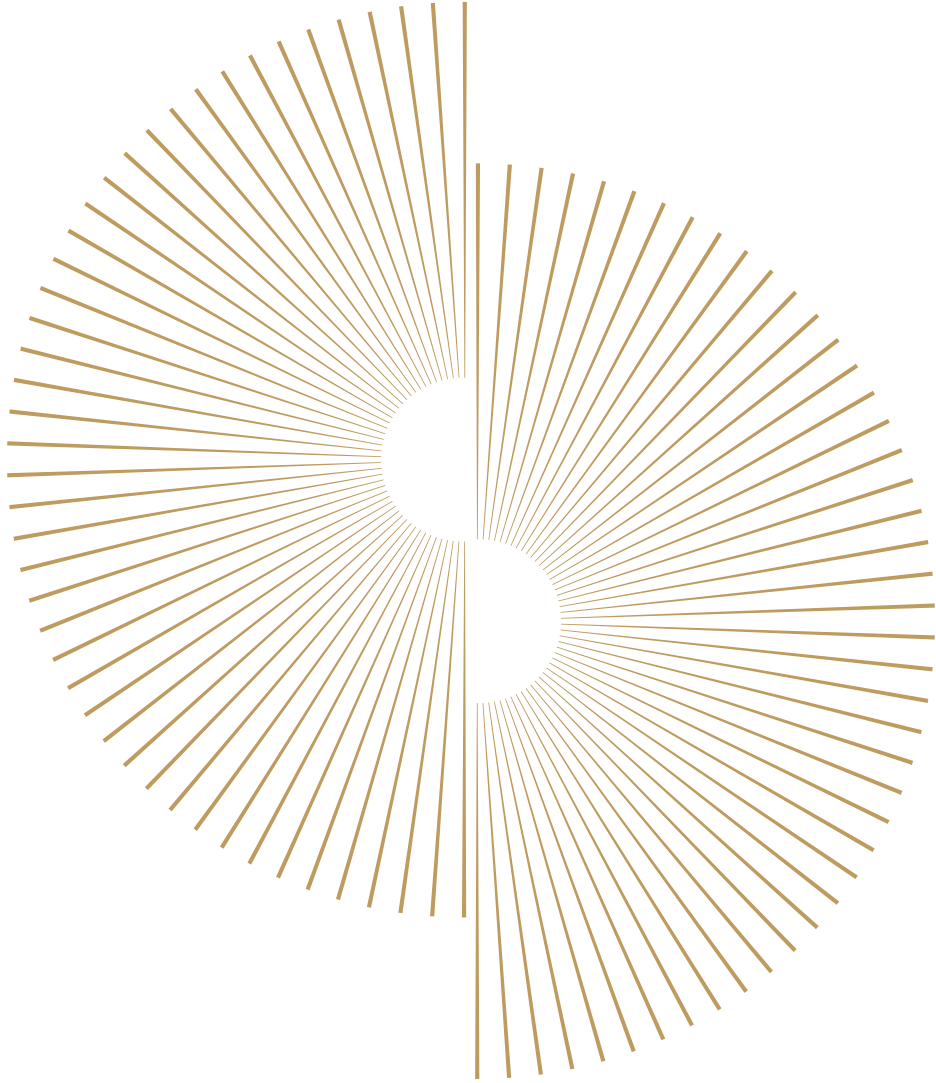
\*Preliminary Draft - Version 1

PRESENTED BY  
**KOLTER**

ORAL REPRESENTATIONS CANNOT BE RELIED UPON AS CORRECTLY STATING REPRESENTATIONS OF THE SELLER. FOR CORRECT REPRESENTATIONS, MAKE REFERENCE TO THIS BROCHURE AND TO THE DOCUMENTS REQUIRED BY SECTION 718.503, FLORIDA STATUTES. TO BE FURNISHED BY A SELLER TO A BUYER OR LESSEE. Prices, terms and availability are subject to change at any time without notice. All dimensions are approximate. The floorplan is subject to change without notice. The seller reserves the absolute right, in its sole judgement and discretion, to substitute appliances, materials, fixtures and equipment of equal or greater value for those specified. There are various methods of calculating the total square footage of a condominium unit, and depending on the method of calculation, the quoted square footage of a condominium unit may vary more than a normal amount. The total condominium square footages as shown in this brochure are based on the "Architectural Method" of measurement which measures the exterior perimeter of the condominium unit, and also includes interior columns and fifty percent of demising walls. The method for calculating residential square footage used in marketing materials is different than the method used for calculating residential square footage in the condominium documents. Please see the Declaration of Condominium for more information. The model shown includes options and upgrades that are not a part of a base residence pricing. © The Kolter Group, March, 2021.



Preview Gallery located in the Douglas Elliman office in the Ritz-Carlton  
1 N. Fort Lauderdale Beach Blvd., Fort Lauderdale, FL 33304



# Selene

OCEANFRONT RESIDENCES  
FORT LAUDERDALE

---

South Tower — Azure Residence

# SOUTH TOWER AZURE RESIDENCE

Selene

OCEANFRONT RESIDENCES  
FORT LAUDERDALE

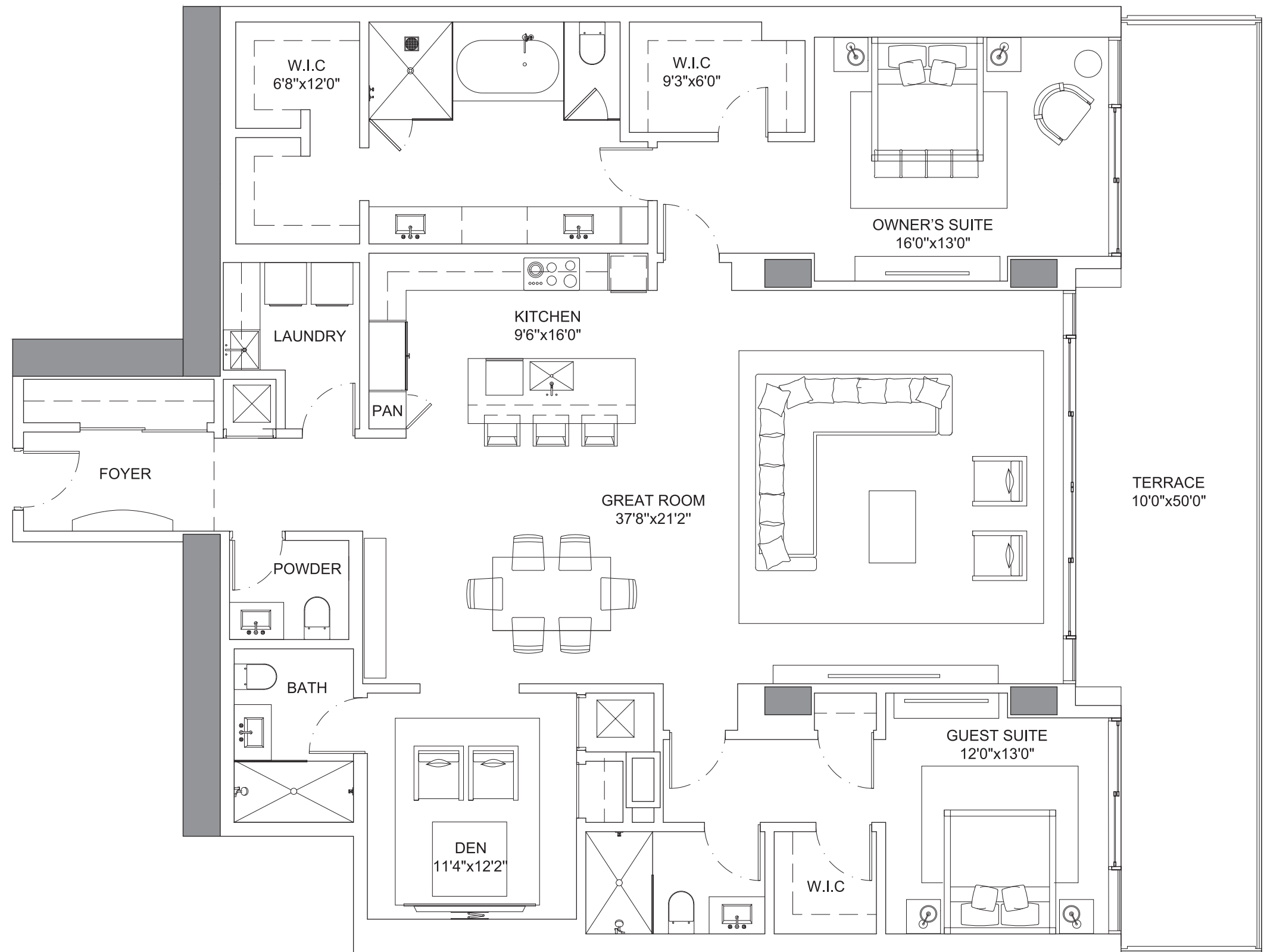
## Specifications

2 Bedrooms | 3.5 Bathrooms | Den

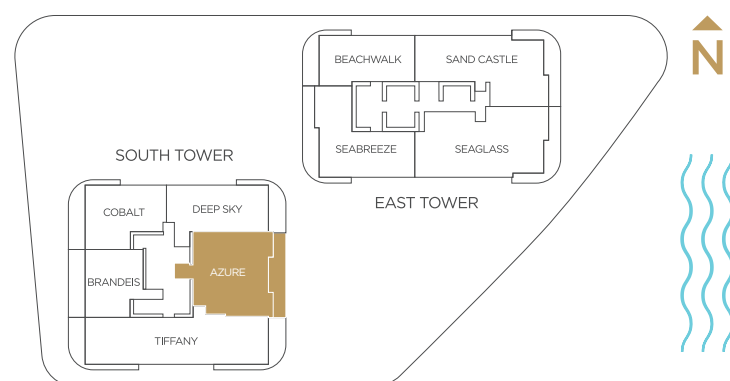
Interior 2,423 SQFT

Exterior 436 SQFT

Total Area 2,859 SQFT



\*Preliminary Draft - Version 1

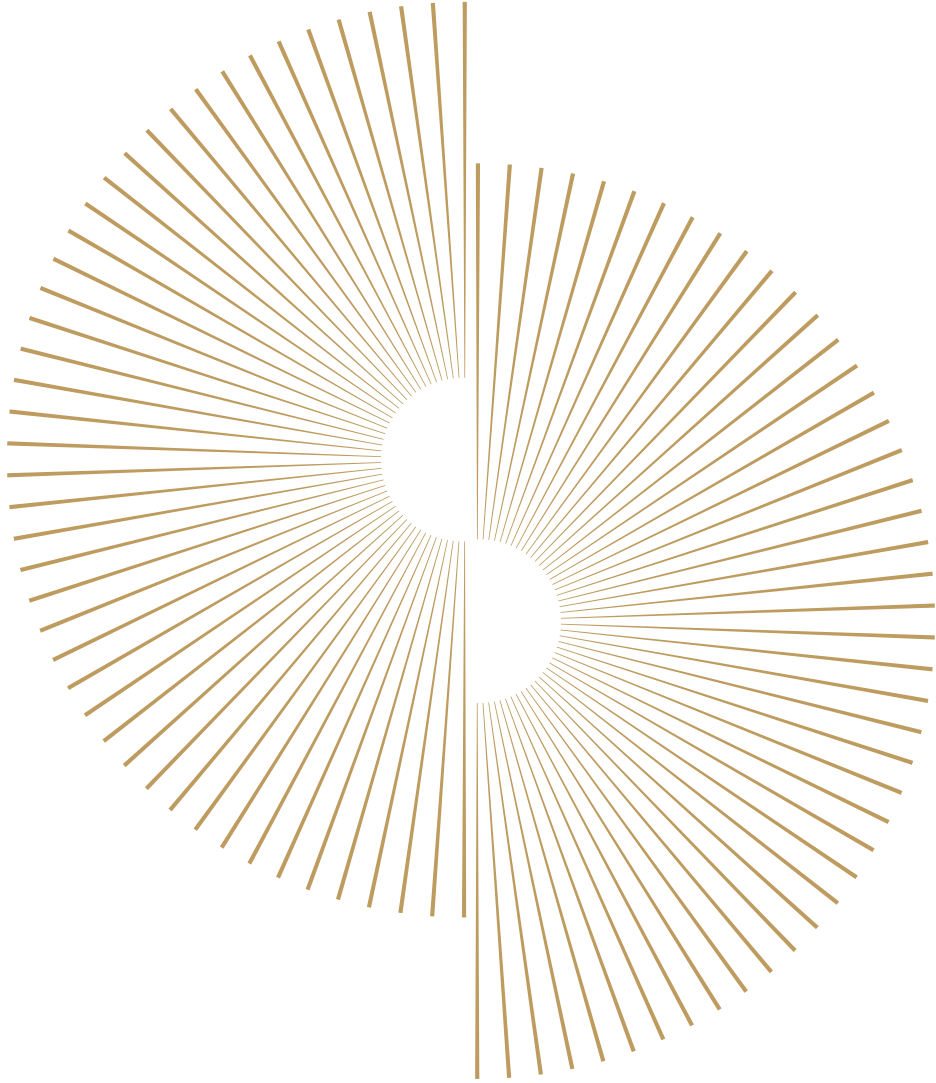


PRESENTED BY  
**KOLTER**

ORAL REPRESENTATIONS CANNOT BE RELIED UPON AS CORRECTLY STATING REPRESENTATIONS OF THE SELLER. FOR CORRECT REPRESENTATIONS, MAKE REFERENCE TO THIS BROCHURE AND TO THE DOCUMENTS REQUIRED BY SECTION 718.503, FLORIDA STATUTES. TO BE FURNISHED BY A SELLER TO A BUYER OR LESSEE. Prices, terms and availability are subject to change at any time without notice. All dimensions are approximate. The floorplan is subject to change without notice. The seller reserves the absolute right, in its sole judgement and discretion, to substitute appliances, materials, fixtures and equipment of equal or greater value for those specified. There are various methods of calculating the total square footage of a condominium unit, and depending on the method of calculation, the quoted square footage of a condominium unit may vary more than a normal amount. The total condominium square footages as shown in this brochure are based on the "Architectural Method" of measurement which measures the exterior perimeter of the condominium unit, and also includes interior columns and fifty percent of demising walls. The method for calculating residential square footage used in marketing materials is different than the method used for calculating residential square footage in the condominium documents. Please see the Declaration of Condominium for more information. The model shown includes options and upgrades that are not a part of a base residence pricing. © The Kolter Group, March, 2021.



Preview Gallery located in the Douglas Elliman office in the Ritz-Carlton  
1 N. Fort Lauderdale Beach Blvd., Fort Lauderdale, FL 33304



# Selene

OCEANFRONT RESIDENCES  
FORT LAUDERDALE

---

South Tower — Brandeis Residence

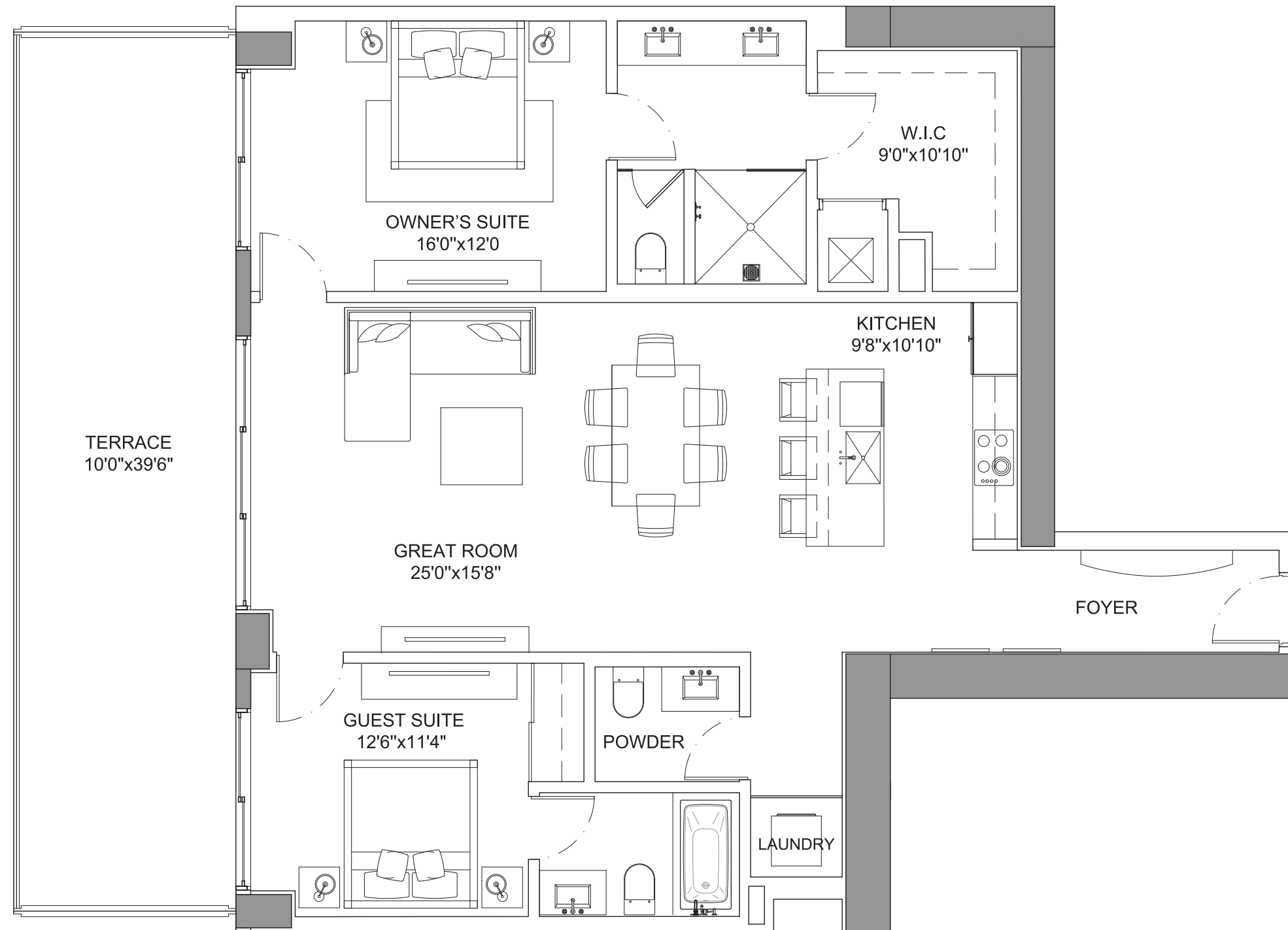


# SOUTH TOWER BRANDEIS RESIDENCE

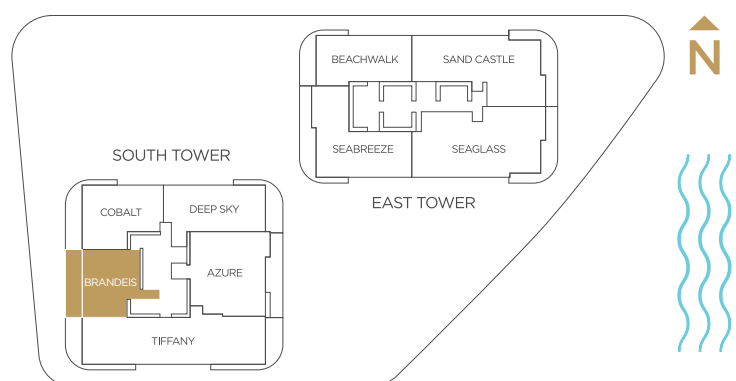
## Specifications

2 Bedrooms | 2.5 Bathrooms

Interior	1,395 SQFT
Exterior	396 SQFT
Total Area	1,791 SQFT



\*Preliminary Draft - Version 1

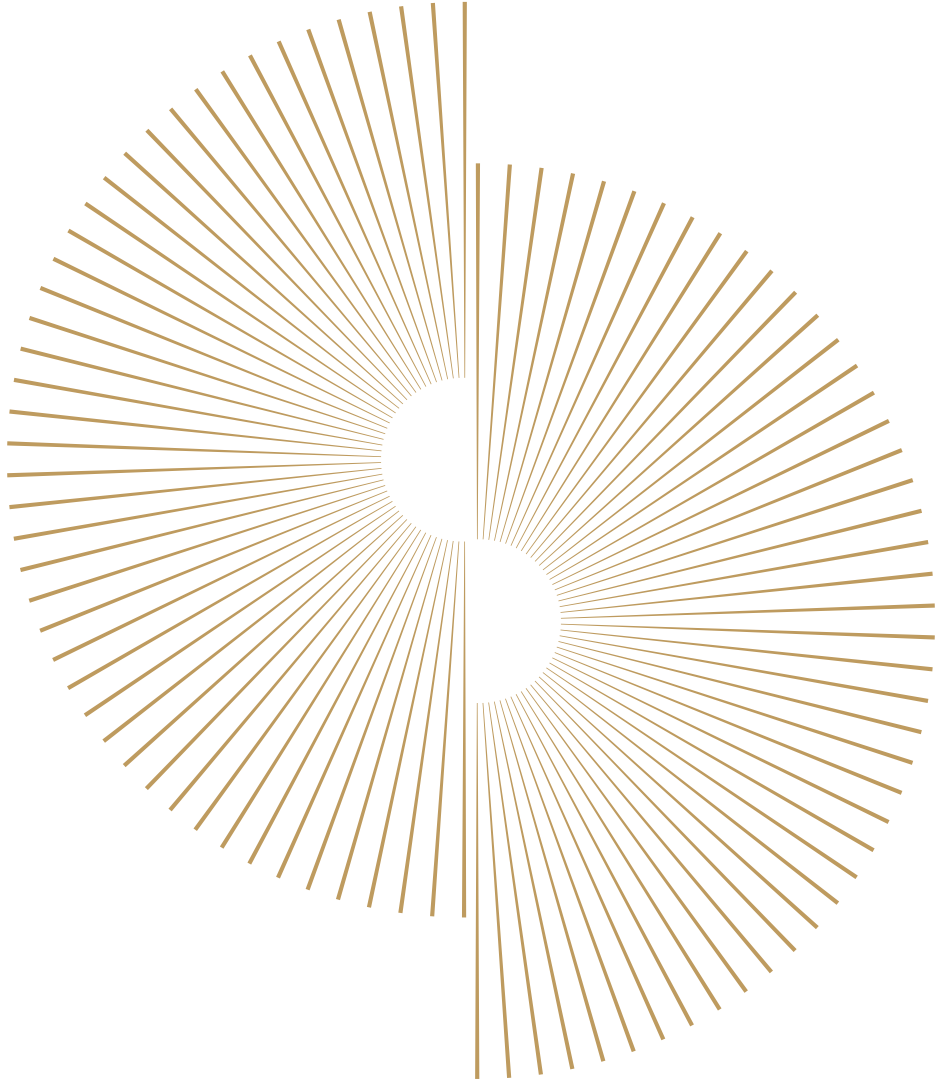


PRESENTED BY  
**KOLTER**

ORAL REPRESENTATIONS CANNOT BE RELIED UPON AS CORRECTLY STATING REPRESENTATIONS OF THE SELLER. FOR CORRECT REPRESENTATIONS, MAKE REFERENCE TO THIS BROCHURE AND TO THE DOCUMENTS REQUIRED BY SECTION 718.503, FLORIDA STATUTES. TO BE FURNISHED BY A SELLER TO A BUYER OR LESSEE. Prices, terms and availability are subject to change at any time without notice. All dimensions are approximate. The floorplan is subject to change without notice. The seller reserves the absolute right, in its sole judgement and discretion, to substitute appliances, materials, fixtures and equipment of equal or greater value for those specified. There are various methods of calculating the total square footage of a condominium unit, and depending on the method of calculation, the quoted square footage of a condominium unit may vary more than a normal amount. The total condominium square footages as shown in this brochure are based on the "Architectural Method" of measurement which measures the exterior perimeter of the condominium unit, and also includes interior columns and fifty percent of demising walls. The method for calculating residential square footage used in marketing materials is different than the method used for calculating residential square footage in the condominium documents. Please see the Declaration of Condominium for more information. The model shown includes options and upgrades that are not a part of a base residence pricing. © The Kolter Group, March, 2021.



Preview Gallery located in the Douglas Elliman office in the Ritz-Carlton  
1 N. Fort Lauderdale Beach Blvd., Fort Lauderdale, FL 33304



# Selene

OCEANFRONT RESIDENCES  
FORT LAUDERDALE

---

South Tower — Cobalt Residence

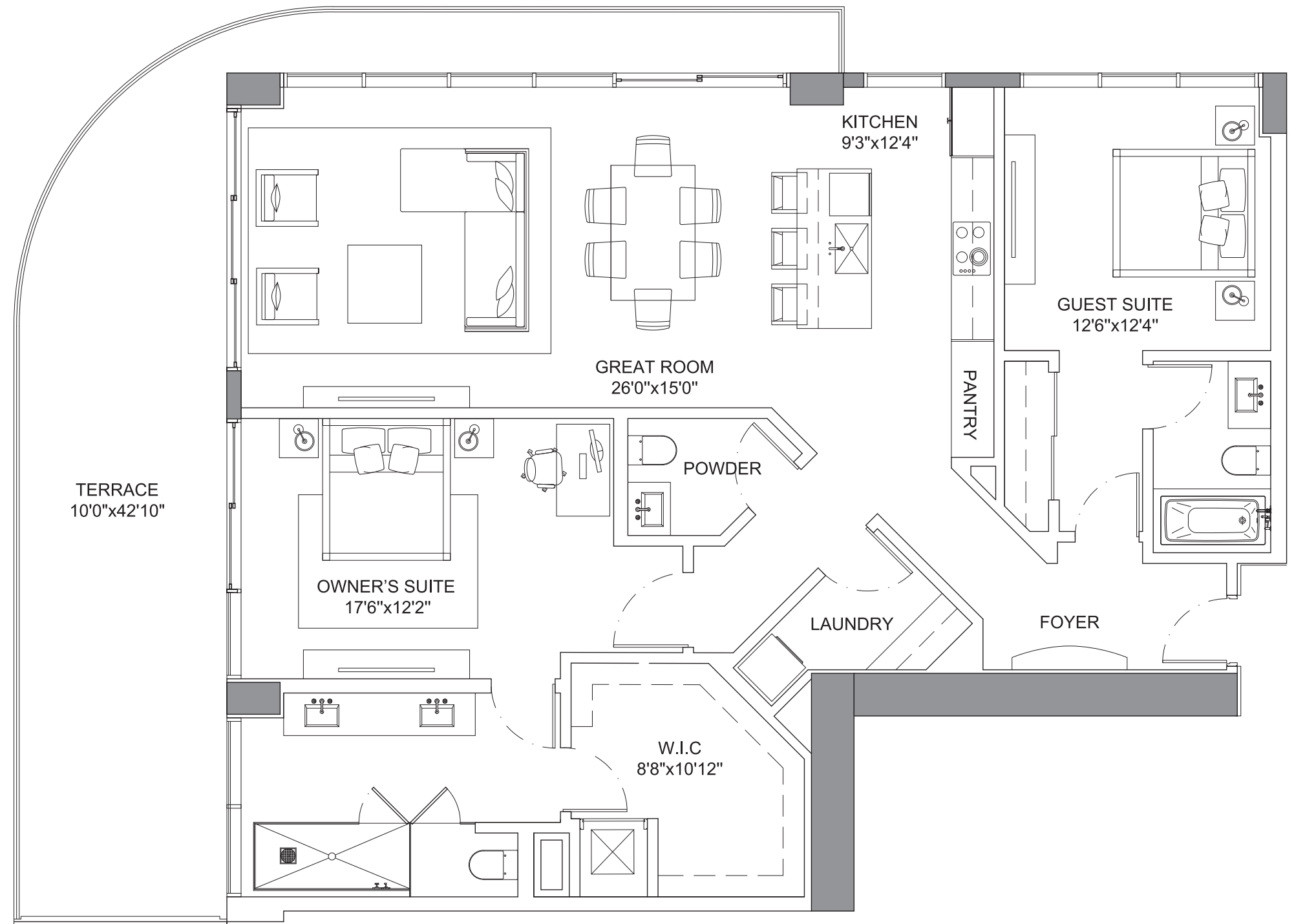
# SOUTH TOWER COBALT RESIDENCE

Selene  
OCEANFRONT RESIDENCES  
FORT LAUDERDALE

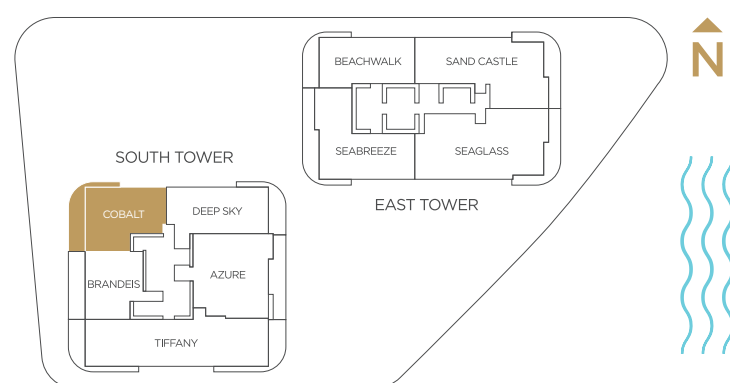
## Specifications

2 Bedrooms | 2.5 Bathrooms

Interior	1,680 SQFT
Exterior	472 SQFT
Total Area	2,152 SQFT



\*Preliminary Draft - Version 1

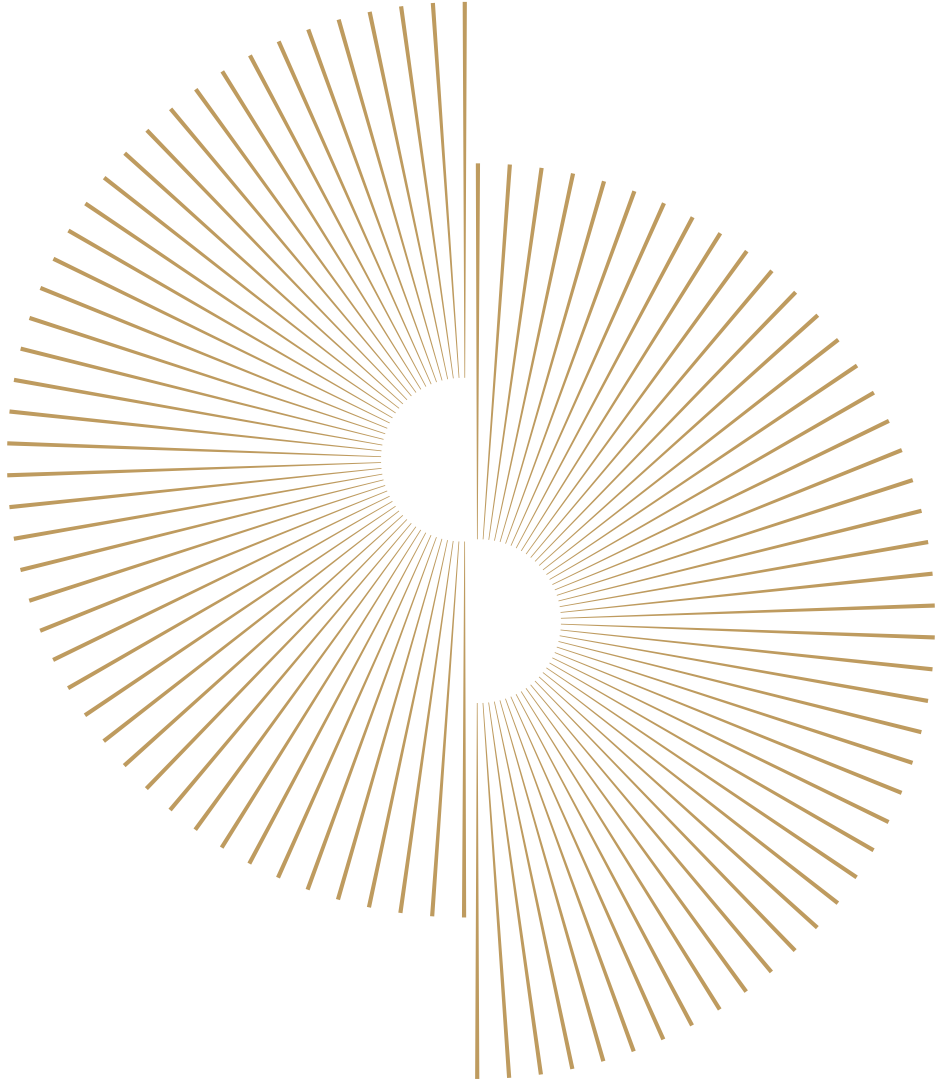


PRESENTED BY  
**KOLTER**

ORAL REPRESENTATIONS CANNOT BE RELIED UPON AS CORRECTLY STATING REPRESENTATIONS OF THE SELLER. FOR CORRECT REPRESENTATIONS, MAKE REFERENCE TO THIS BROCHURE AND TO THE DOCUMENTS REQUIRED BY SECTION 718.503, FLORIDA STATUTES. TO BE FURNISHED BY A SELLER TO A BUYER OR LESSEE. Prices, terms and availability are subject to change at any time without notice. All dimensions are approximate. The floorplan is subject to change without notice. The seller reserves the absolute right, in its sole judgement and discretion, to substitute appliances, materials, fixtures and equipment of equal or greater value for those specified. There are various methods of calculating the total square footage of a condominium unit, and depending on the method of calculation, the quoted square footage of a condominium unit may vary more than a normal amount. The total condominium square footages as shown in this brochure are based on the "Architectural Method" of measurement which measures the exterior perimeter of the condominium unit, and also includes interior columns and fifty percent of demising walls. The method for calculating residential square footage used in marketing materials is different than the method used for calculating residential square footage in the condominium documents. Please see the Declaration of Condominium for more information. The model shown includes options and upgrades that are not a part of a base residence pricing. © The Kolter Group, March, 2021.



Preview Gallery located in the Douglas Elliman office in the Ritz-Carlton  
1 N. Fort Lauderdale Beach Blvd., Fort Lauderdale, FL 33304



# Selene

OCEANFRONT RESIDENCES  
FORT LAUDERDALE

---

South Tower — Deep Sky Residence

# SOUTH TOWER DEEP SKY RESIDENCE

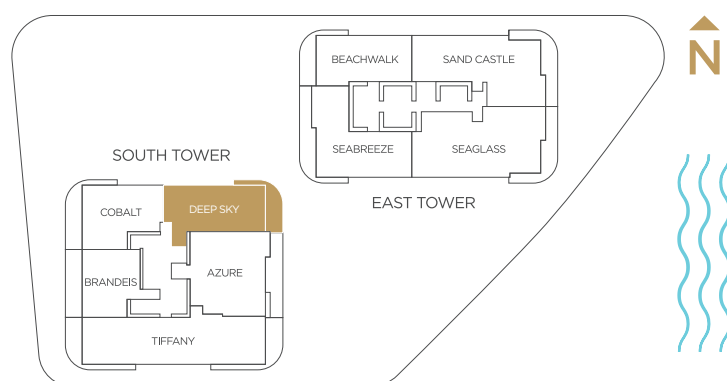
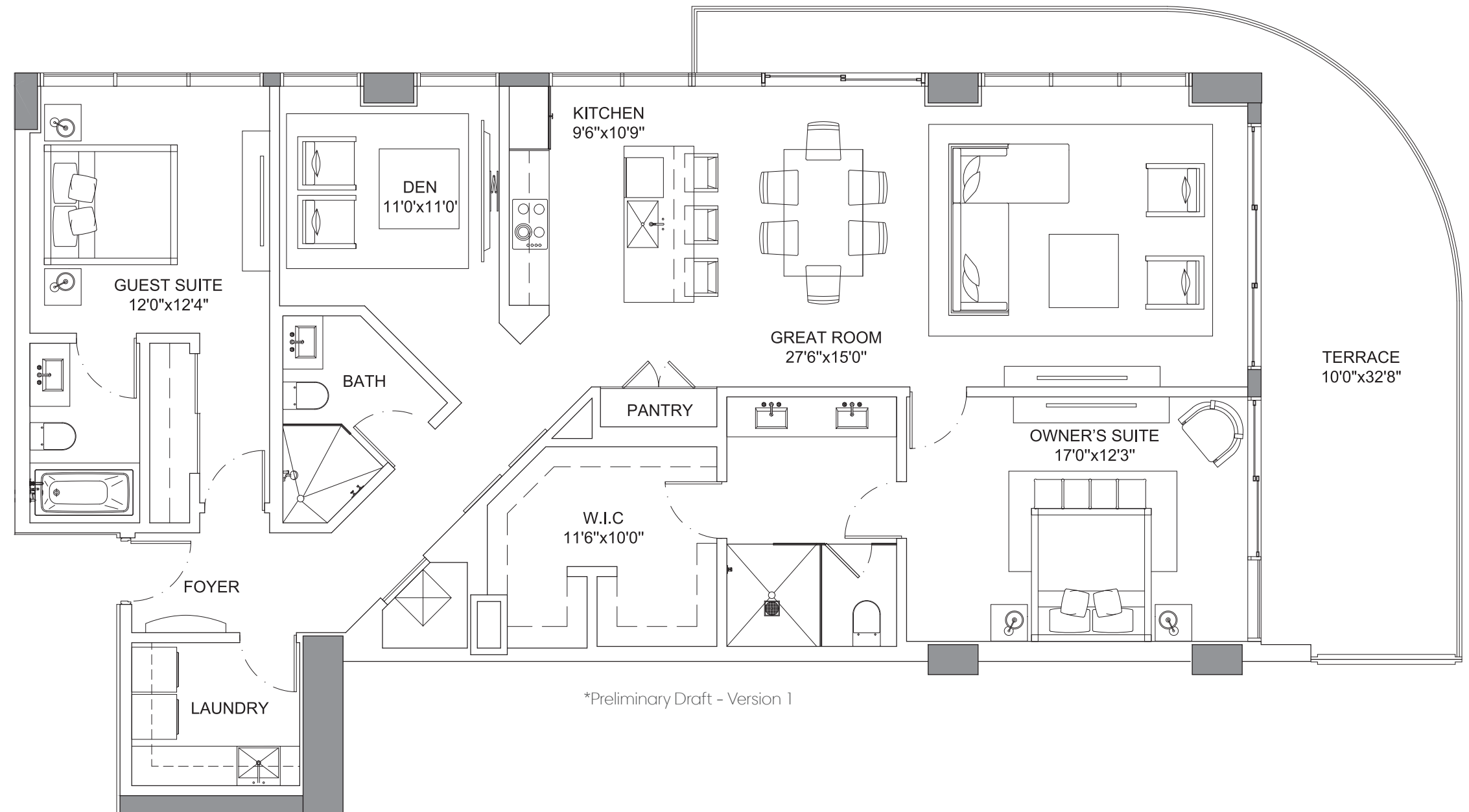
# Selene

OCEANFRONT RESIDENCES  
FORT LAUDERDALE

## Specifications

2 Bedrooms | 3 Bathrooms | Den

Interior	1,858 SQFT
Exterior	374 SQFT
Total Area	2,232 SQFT



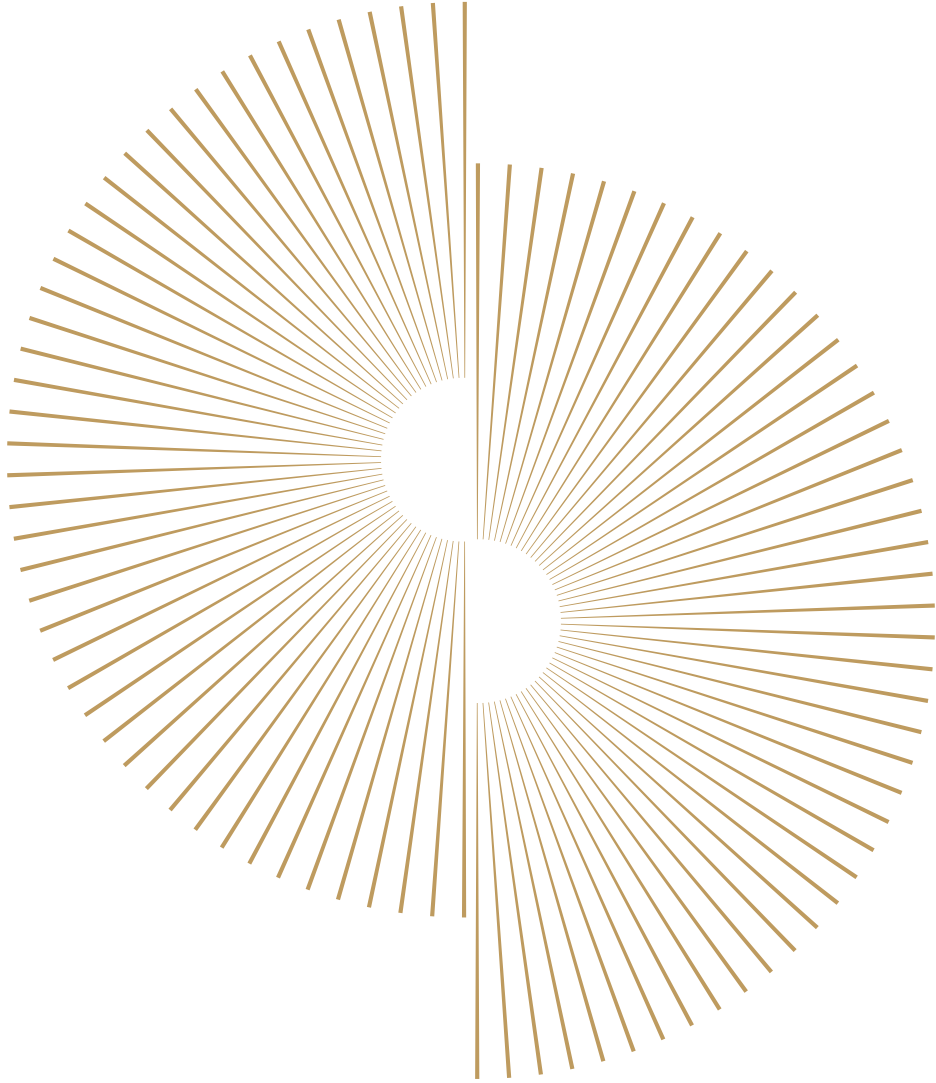
ORAL REPRESENTATIONS CANNOT BE RELIED UPON AS CORRECTLY STATING REPRESENTATIONS OF THE SELLER. FOR CORRECT REPRESENTATIONS, MAKE REFERENCE TO THIS BROCHURE AND TO THE DOCUMENTS REQUIRED BY SECTION 718.503, FLORIDA STATUTES. TO BE FURNISHED BY A SELLER TO A BUYER OR LESSEE. Prices, terms and availability are subject to change at any time without notice. All dimensions are approximate. The floorplan is subject to change without notice. The seller reserves the absolute right, in its sole judgement and discretion, to substitute appliances, materials, fixtures and equipment of equal or greater value for those specified. There are various methods of calculating the total square footage of a condominium unit, and depending on the method of calculation, the quoted square footage of a condominium unit may vary more than a normal amount. The total condominium square footages as shown in this brochure are based on the "Architectural Method" of measurement which measures the exterior perimeter of the condominium unit, and also includes interior columns and fifty percent of demising walls. The method for calculating residential square footage used in marketing materials is different than the method used for calculating residential square footage in the condominium documents. Please see the Declaration of Condominium for more information. The model shown includes options and upgrades that are not a part of a base residence pricing. © The Kolter Group, March, 2021.

PRESENTED BY  
**KOLTER**



Preview Gallery located in the Douglas Elliman office in the Ritz-Carlton  
1 N. Fort Lauderdale Beach Blvd., Fort Lauderdale, FL 33304





# Selene

OCEANFRONT RESIDENCES  
FORT LAUDERDALE

---

South Tower — Tiffany Residence

# SOUTH TOWER TIFFANY RESIDENCE

Selene  
OCEANFRONT RESIDENCES  
FORT LAUDERDALE

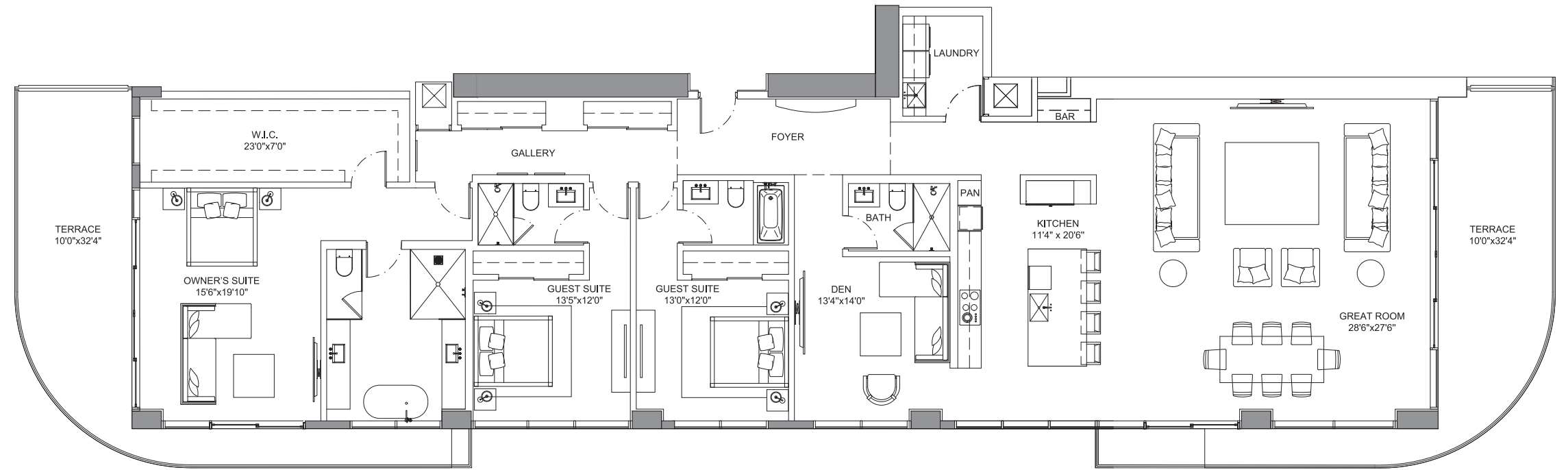
## Specifications

3 Bedrooms | 4 Bathrooms | Den

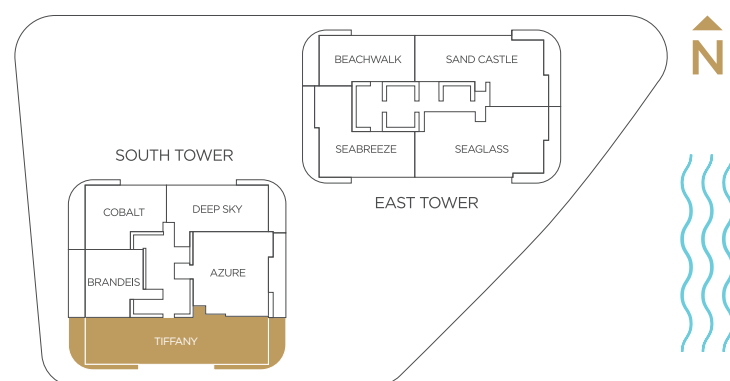
Interior 3,264 SQFT

Exterior 746 SQFT

Total Area 4,010 SQFT



\*Preliminary Draft - Version 1



PRESENTED BY  
**KOLTER**

ORAL REPRESENTATIONS CANNOT BE RELIED UPON AS CORRECTLY STATING REPRESENTATIONS OF THE SELLER. FOR CORRECT REPRESENTATIONS, MAKE REFERENCE TO THIS BROCHURE AND TO THE DOCUMENTS REQUIRED BY SECTION 718.503, FLORIDA STATUTES. TO BE FURNISHED BY A SELLER TO A BUYER OR LESSEE. Prices, terms and availability are subject to change at any time without notice. All dimensions are approximate. The floorplan is subject to change without notice. The seller reserves the absolute right, in its sole judgement and discretion, to substitute appliances, materials, fixtures and equipment of equal or greater value for those specified. There are various methods of calculating the total square footage of a condominium unit, and depending on the method of calculation, the quoted square footage of a condominium unit may vary more than a normal amount. The total condominium square footages as shown in this brochure are based on the "Architectural Method" of measurement which measures the exterior perimeter of the condominium unit, and also includes interior columns and fifty percent of demising walls. The method for calculating residential square footage used in marketing materials is different than the method used for calculating residential square footage in the condominium documents. Please see the Declaration of Condominium for more information. The model shown includes options and upgrades that are not a part of a base residence pricing. © The Kolter Group, March, 2021.



Preview Gallery located in the Douglas Elliman office in the Ritz-Carlton  
1 N. Fort Lauderdale Beach Blvd., Fort Lauderdale, FL 33304