



OCEAN PARK  
SOUTH BEACH

Beach House 01  
Ground Level




OCEAN PARK  
SOUTH BEACH

Sales Loft  
135 Ocean Drive, Miami Beach, FL 33139  
305-800-SOBE (7623)

[OceanParkSobe.com](http://OceanParkSobe.com)

These materials are not intended to be an offer to sell, or solicitation to buy a unit in the condominium. Such an offering shall only be made pursuant to the prospectus/offer circular for the condominium and no statements should be relied upon unless made in the prospectus or in the applicable purchase agreement. Multiplan Real Estate Asset Management ("Multiplan REAM") is not the project Developer. This Condominium is being developed by 312 Ocean Park, LLC, a Florida limited liability company, which has a limited right to use the trademarked names and logos of Multiplan REAM. Any and all statements, disclosures and/or representations shall be deemed made by the Developer and not by Multiplan REAM and you agree to look solely to Developer (and not to Multiplan REAM and/or any of its affiliates) with respect to any and all matters relating to the marketing and/or development of the Condominium and with respect to the sales of units in the Condominium. Additionally, Multiplan Empreendimentos Imobiliarios ("Multiplan Brazil") is not related to, or an affiliate of, Multiplan REAM or the Developer. Any and all statements, disclosures and/or representations shall be deemed made by the Developer and not by Multiplan Brazil and you agree to look solely to Developer (and not to Multiplan Brazil and/or any of its affiliates) with respect to any and all matters relating to the marketing and/or development of the Condominium and with respect to the sales of units in the Condominium. Stated square footages and dimensions are measured to the exterior boundaries of the exterior walls and the centerline of interior demising walls and in fact vary from the square footage and dimensions that would be determined by using the description and definition of the "Unit" set forth in the Declaration (which generally only includes the interior airspace between the perimeter walls and excludes all interior structural components and other common elements).

ORAL REPRESENTATIONS CANNOT BE RELIED UPON AS CORRECTLY STATING THE REPRESENTATIONS OF THE DEVELOPER. FOR CORRECT REPRESENTATIONS, REFERENCE SHOULD BE MADE TO THE DOCUMENTS REQUIRED BY SECTION 718.503, FLORIDA STATUTES. TO BE FURNISHED BY A DEVELOPER TO A BUYER OR LESSEE. These materials are not intended to be an offer to sell, or solicitation to buy a unit in the condominium.

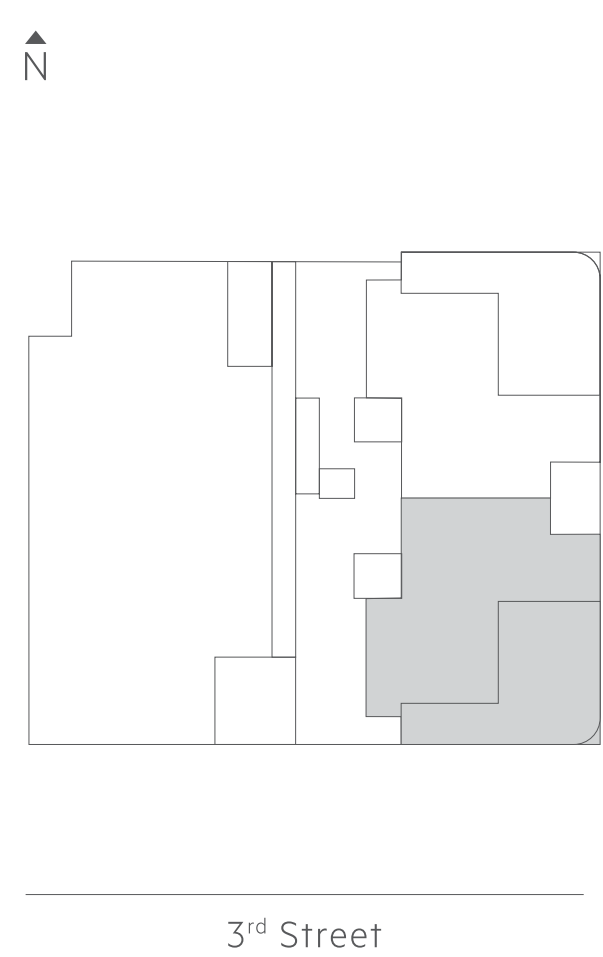


**Beach House 01**  
Ground Level

2 Bedrooms | 2 Bathrooms | Private Terrace  
 Interior 1,117 SQ FT | 103.8 SQ M  
 Exterior 597 SQ FT | 55.5 SQ M  
**Total 1,714 SQ FT | 159.3 SQ M**



KEY PLAN



FAÇADE



AERIAL VIEW



Stated square footages and dimensions are measured to the exterior boundaries of the exterior walls and the centerline of interior demising walls and in fact vary from the square footage and dimensions that would be determined by using the description and definition of the "Unit" set forth in the Declaration (which generally only includes the interior airspace between the perimeter walls and excludes all interior structural components and other common elements). This method is generally used in sales materials and is provided to allow a prospective buyer to compare the Units with units in other condominium projects that utilize the same method. For your reference, the area of the Unit, determined in accordance with these defined unit boundaries, is set forth on Exhibit "3" to the Declaration. Measurements of rooms set forth on this floor plan are generally taken at the furthest points of each given room (as if the room were a perfect rectangle) without regard for any cutouts or variations. Accordingly, the area of the actual room will typically be smaller than the product obtained by multiplying the stated length and width. All dimensions are estimates which will vary with actual construction, and all floor plans, specifications and other development plans are subject to change and will not necessarily accurately reflect the final plans and specifications for the development. All depictions of appliances, counters, soffits, floor coverings and other matters of detail, including, without limitation, items of finish and decoration, are conceptual only and are not necessarily included in each Unit.

**ORAL REPRESENTATIONS CANNOT BE RELIED UPON AS CORRECTLY STATING THE REPRESENTATIONS OF THE DEVELOPER. FOR CORRECT REPRESENTATIONS, REFERENCE SHOULD BE MADE TO THE DOCUMENTS REQUIRED BY SECTION 718.503, FLORIDA STATUTES, TO BE FURNISHED BY A DEVELOPER TO A BUYER OR LESSEE.** These materials are not intended to be an offer to sell, or solicitation to buy a unit in the condominium.



OCEAN PARK  
SOUTH BEACH

Beach House 02  
Ground Level




OCEAN PARK  
SOUTH BEACH

Sales Loft  
135 Ocean Drive, Miami Beach, FL 33139  
305-800-SOBE (7623)

[OceanParkSobe.com](http://OceanParkSobe.com)

These materials are not intended to be an offer to sell, or solicitation to buy a unit in the condominium. Such an offering shall only be made pursuant to the prospectus/offer circular for the condominium and no statements should be relied upon unless made in the prospectus or in the applicable purchase agreement. Multiplan Real Estate Asset Management ("Multiplan REAM") is not the project Developer. This Condominium is being developed by 312 Ocean Park, LLC, a Florida limited liability company, which has a limited right to use the trademarked names and logos of Multiplan REAM. Any and all statements, disclosures and/or representations shall be deemed made by the Developer and not by Multiplan REAM and you agree to look solely to Developer (and not to Multiplan REAM and/or any of its affiliates) with respect to any and all matters relating to the marketing and/or development of the Condominium and with respect to the sales of units in the Condominium. Additionally, Multiplan Empreendimentos Imobiliarios ("Multiplan Brazil") is not related to, or an affiliate of, Multiplan REAM or the Developer. Any and all statements, disclosures and/or representations shall be deemed made by the Developer and not by Multiplan Brazil and you agree to look solely to Developer (and not to Multiplan Brazil and/or any of its affiliates) with respect to any and all matters relating to the marketing and/or development of the Condominium and with respect to the sales of units in the Condominium. Stated square footages and dimensions are measured to the exterior boundaries of the exterior walls and the centerline of interior demising walls and in fact vary from the square footage and dimensions that would be determined by using the description and definition of the "Unit" set forth in the Declaration (which generally only includes the interior airspace between the perimeter walls and excludes all interior structural components and other common elements).

ORAL REPRESENTATIONS CANNOT BE RELIED UPON AS CORRECTLY STATING THE REPRESENTATIONS OF THE DEVELOPER. FOR CORRECT REPRESENTATIONS, REFERENCE SHOULD BE MADE TO THE DOCUMENTS REQUIRED BY SECTION 718.503, FLORIDA STATUTES. TO BE FURNISHED BY A DEVELOPER TO A BUYER OR LESSEE. These materials are not intended to be an offer to sell, or solicitation to buy a unit in the condominium.

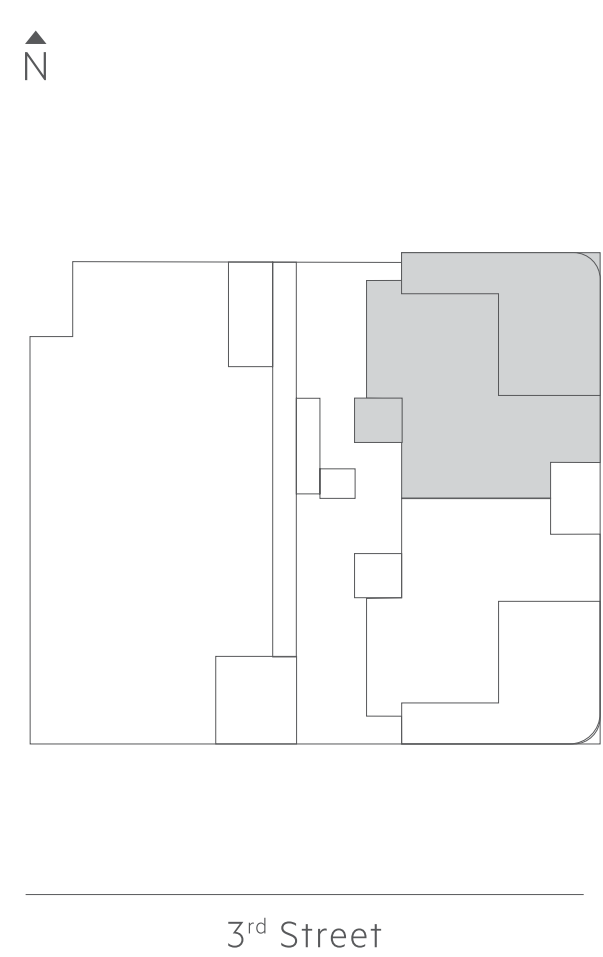


**Beach House 02**  
Ground Level

2 Bedrooms | 2 Bathrooms | Private Terrace  
 Interior 1,117 SQ FT | 103.8 SQ M  
 Exterior 597 SQ FT | 55.5 SQ M  
 Total 1,714 SQ FT | 159.3 SQ M



KEY PLAN



FAÇADE



AERIAL VIEW



Stated square footages and dimensions are measured to the exterior boundaries of the exterior walls and the centerline of interior demising walls and in fact vary from the square footage and dimensions that would be determined by using the description and definition of the "Unit" set forth in the Declaration (which generally only includes the interior airspace between the perimeter walls and excludes all interior structural components and other common elements). This method is generally used in sales materials and is provided to allow a prospective buyer to compare the Units with units in other condominium projects that utilize the same method. For your reference, the area of the Unit, determined in accordance with these defined unit boundaries, is set forth on Exhibit "3" to the Declaration. Measurements of rooms set forth on this floor plan are generally taken at the farthest points of each given room (as if the room were a perfect rectangle) without regard for any cutouts or variations. Accordingly, the area of the actual room will typically be smaller than the product obtained by multiplying the stated length and width. All dimensions are estimates which will vary with actual construction, and all floor plans, specifications and other development plans are subject to change and will not necessarily accurately reflect the final plans and specifications for the development. All depictions of appliances, counters, soffits, floor coverings and other matters of detail, including, without limitation, items of finish and decoration, are conceptual only and are not necessarily included in each Unit.

ORAL REPRESENTATIONS CANNOT BE RELIED UPON AS CORRECTLY STATING THE REPRESENTATIONS OF THE DEVELOPER. FOR CORRECT REPRESENTATIONS, REFERENCE SHOULD BE MADE TO THE DOCUMENTS REQUIRED BY SECTION 718.503, FLORIDA STATUTES, TO BE FURNISHED BY A DEVELOPER TO A BUYER OR LESSEE. These materials are not intended to be an offer to sell, or solicitation to buy a unit in the condominium.



OCEAN PARK  
SOUTH BEACH

Beach House 03  
Second Level




OCEAN PARK  
SOUTH BEACH

Sales Loft  
135 Ocean Drive, Miami Beach, FL 33139  
305-800-SOBE (7623)

OceanParkSobe.com

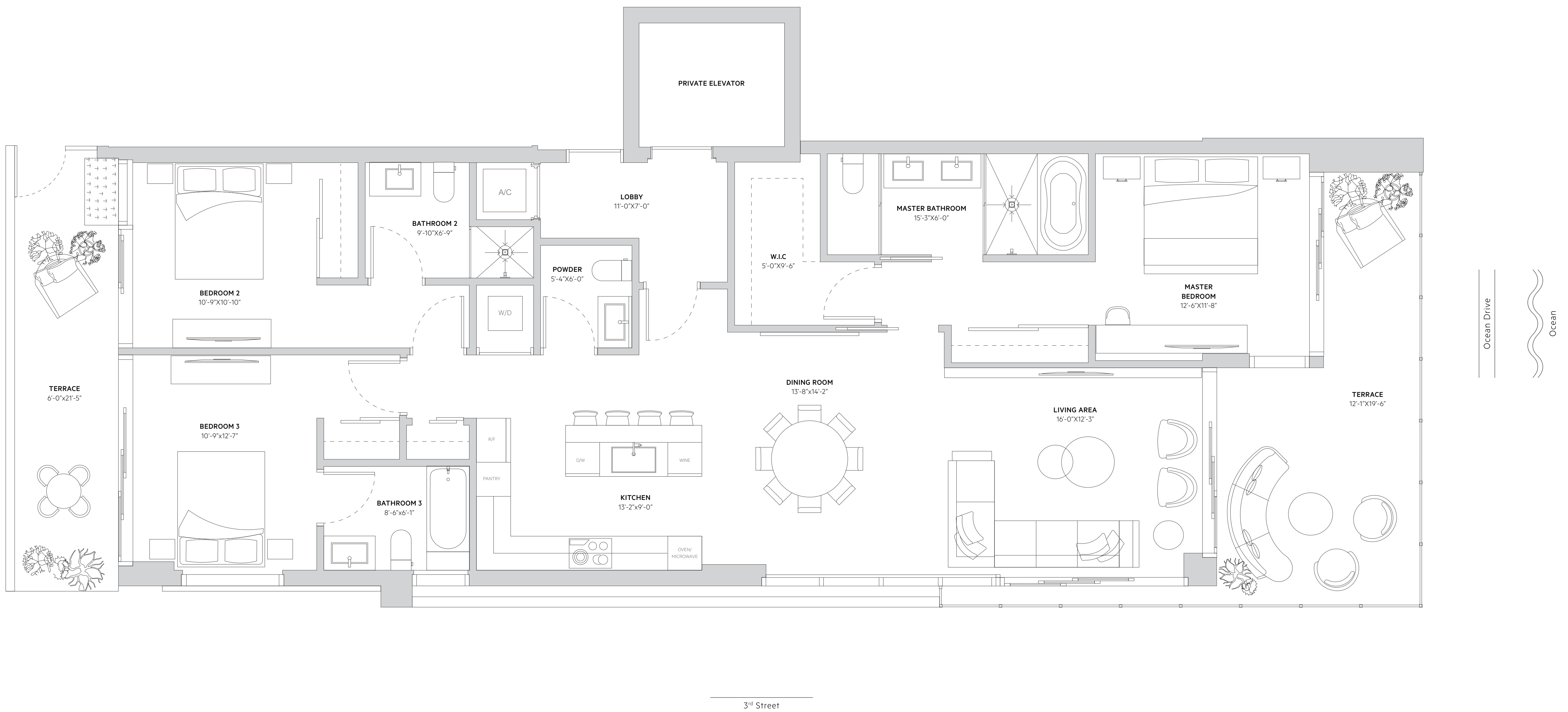
These materials are not intended to be an offer to sell, or solicitation to buy a unit in the condominium. Such an offering shall only be made pursuant to the prospectus/offer circular for the condominium and no statements should be relied upon unless made in the prospectus or in the applicable purchase agreement. Multiplan Real Estate Asset Management ("Multiplan REAM") is not the project Developer. This Condominium is being developed by 312 Ocean Park, LLC, a Florida limited liability company, which has a limited right to use the trademarked names and logos of Multiplan REAM. Any and all statements, disclosures and/or representations shall be deemed made by the Developer and not by Multiplan REAM and you agree to look solely to Developer (and not to Multiplan REAM and/or any of its affiliates) with respect to any and all matters relating to the marketing and/or development of the Condominium and with respect to the sales of units in the Condominium. Additionally, Multiplan Empreendimentos Imobiliarios ("Multiplan Brazil") is not related to, or an affiliate of, Multiplan REAM or the Developer. Any and all statements, disclosures and/or representations shall be deemed made by the Developer and not by Multiplan Brazil and you agree to look solely to Developer (and not to Multiplan Brazil and/or any of its affiliates) with respect to any and all matters relating to the marketing and/or development of the Condominium and with respect to the sales of units in the Condominium. Stated square footages and dimensions are measured to the exterior boundaries of the exterior walls and the centerline of interior demising walls and in fact vary from the square footage and dimensions that would be determined by using the description and definition of the "Unit" set forth in the Declaration (which generally only includes the interior airspace between the perimeter walls and excludes all interior structural components and other common elements).

ORAL REPRESENTATIONS CANNOT BE RELIED UPON AS CORRECTLY STATING THE REPRESENTATIONS OF THE DEVELOPER. FOR CORRECT REPRESENTATIONS, REFERENCE SHOULD BE MADE TO THE DOCUMENTS REQUIRED BY SECTION 718.503, FLORIDA STATUTES. TO BE FURNISHED BY A DEVELOPER TO A BUYER OR LESSEE. These materials are not intended to be an offer to sell, or solicitation to buy a unit in the condominium.



**Beach House 03**  
Second Level

3 Bedrooms | 3.5 Bathrooms | Private Terraces  
 Interior 1,715 SQ FT | 159.3 SQ M  
 Exterior 423 SQ FT | 39.3 SQ M  
**Total 2,138 SQ FT | 198.6 SQ M**



KEY PLAN



FAÇADE



AERIAL VIEW



Stated square footages and dimensions are measured to the exterior boundaries of the exterior walls and the centerline of interior demising walls and in fact vary from the square footage and dimensions that would be determined by using the description and definition of the "Unit" set forth in the Declaration (which generally only includes the interior airspace between the perimeter walls and excludes all interior structural components and other common elements). This method is generally used in sales materials and is provided to allow a prospective buyer to compare the Units with units in other condominium projects that utilize the same method. For your reference, the area of the Unit, determined in accordance with these defined unit boundaries, is set forth on Exhibit "3" to the Declaration. Measurements of rooms set forth on this floor plan are generally taken at the farthest points of each given room (as if the room were a perfect rectangle) without regard for any cutouts or variations. Accordingly, the area of the actual room will typically be smaller than the product obtained by multiplying the stated length and width. All dimensions are estimates which will vary with actual construction, and all floor plans, specifications and other development plans are subject to change and will not necessarily accurately reflect the final plans and specifications for the development. All depictions of appliances, counters, soffits, floor coverings and other matters of detail, including, without limitation, items of finish and decoration, are conceptual only and are not necessarily included in each Unit.

ORAL REPRESENTATIONS CANNOT BE RELIED UPON AS CORRECTLY STATING THE REPRESENTATIONS OF THE DEVELOPER. FOR CORRECT REPRESENTATIONS, REFERENCE SHOULD BE MADE TO THE DOCUMENTS REQUIRED BY SECTION 718.503, FLORIDA STATUTES, TO BE FURNISHED BY A DEVELOPER TO A BUYER OR LESSEE. These materials are not intended to be an offer to sell, or solicitation to buy a unit in the condominium.



OCEAN PARK  
SOUTH BEACH

Beach House 04  
Second Level




OCEAN PARK  
SOUTH BEACH

Sales Loft  
135 Ocean Drive, Miami Beach, FL 33139  
305-800-SOBE (7623)

[OceanParkSobe.com](http://OceanParkSobe.com)

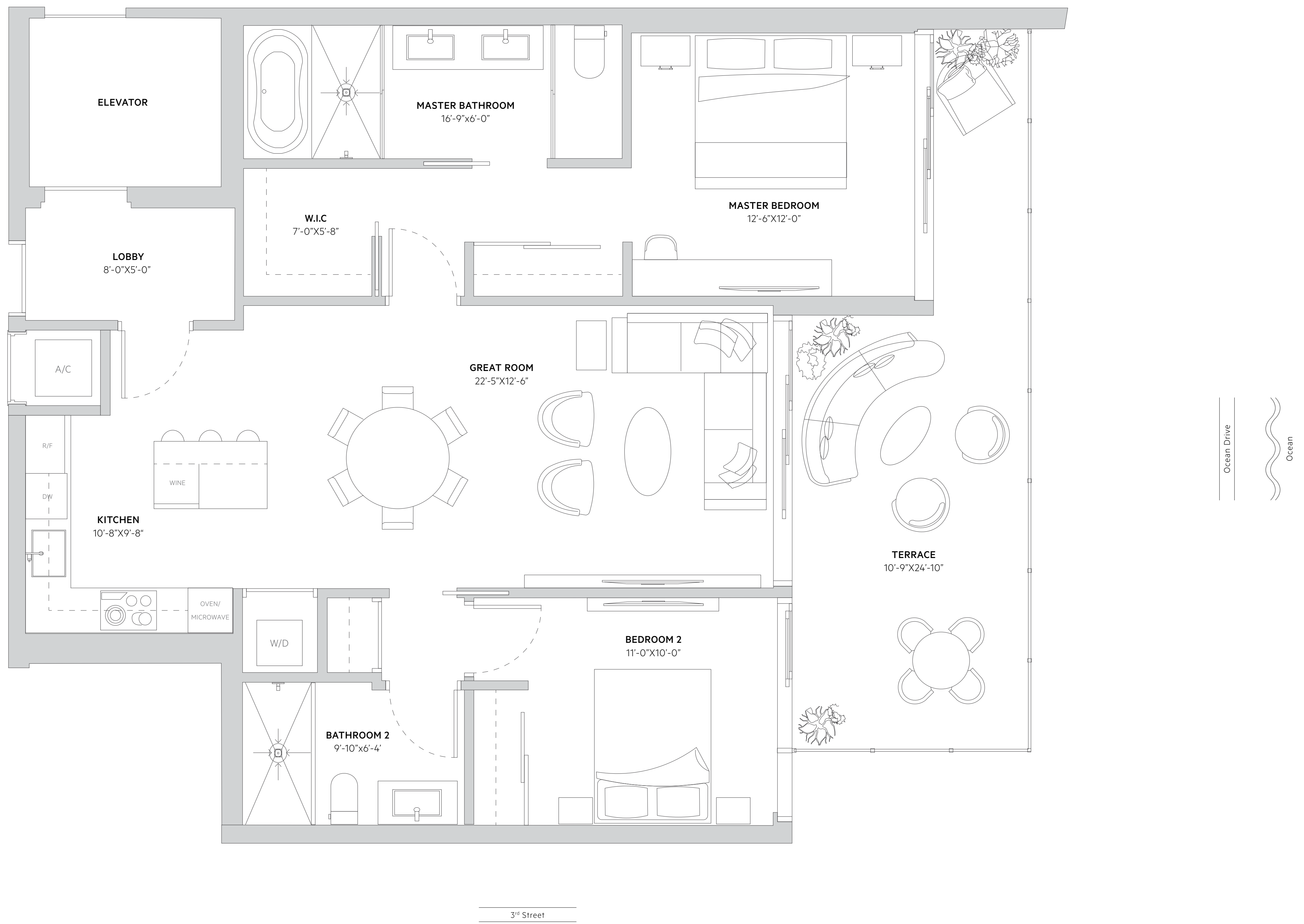
These materials are not intended to be an offer to sell, or solicitation to buy a unit in the condominium. Such an offering shall only be made pursuant to the prospectus/offer circular for the condominium and no statements should be relied upon unless made in the prospectus or in the applicable purchase agreement. Multiplan Real Estate Asset Management ("Multiplan REAM") is not the project Developer. This Condominium is being developed by 312 Ocean Park, LLC, a Florida limited liability company, which has a limited right to use the trademarked names and logos of Multiplan REAM. Any and all statements, disclosures and/or representations shall be deemed made by the Developer and not by Multiplan REAM and you agree to look solely to Developer (and not to Multiplan REAM and/or any of its affiliates) with respect to any and all matters relating to the marketing and/or development of the Condominium and with respect to the sales of units in the Condominium. Additionally, Multiplan Empreendimentos Imobiliarios ("Multiplan Brazil") is not related to, or an affiliate of, Multiplan REAM or the Developer. Any and all statements, disclosures and/or representations shall be deemed made by the Developer and not by Multiplan Brazil and you agree to look solely to Developer (and not to Multiplan Brazil and/or any of its affiliates) with respect to any and all matters relating to the marketing and/or development of the Condominium and with respect to the sales of units in the Condominium. Stated square footages and dimensions are measured to the exterior boundaries of the exterior walls and the centerline of interior demising walls and in fact vary from the square footage and dimensions that would be determined by using the description and definition of the "Unit" set forth in the Declaration (which generally only includes the interior airspace between the perimeter walls and excludes all interior structural components and other common elements).

ORAL REPRESENTATIONS CANNOT BE RELIED UPON AS CORRECTLY STATING THE REPRESENTATIONS OF THE DEVELOPER. FOR CORRECT REPRESENTATIONS, REFERENCE SHOULD BE MADE TO THE DOCUMENTS REQUIRED BY SECTION 718.503, FLORIDA STATUTES. TO BE FURNISHED BY A DEVELOPER TO A BUYER OR LESSEE. These materials are not intended to be an offer to sell, or solicitation to buy a unit in the condominium.



**Beach House 04**  
Second Level

2 Bedrooms | 2 Bathrooms | Private Terrace  
 Interior 1,160 SQ FT | 107.8 SQ M  
 Exterior 267 SQ FT | 24.8 SQ M  
**Total 1,427 SQ FT | 132.6 SQ M**



KEY PLAN



FAÇADE



AERIAL VIEW



Stated square footages and dimensions are measured to the exterior boundaries of the exterior walls and the centerline of interior demising walls and in fact vary from the square footage and dimensions that would be determined by using the description and definition of the "Unit" set forth in the Declaration (which generally only includes the interior airspace between the perimeter walls and excludes all interior structural components and other common elements). This method is generally used in sales materials and is provided to allow a prospective buyer to compare the Units with units in other condominium projects that utilize the same method. For your reference, the area of the Unit, determined in accordance with these defined unit boundaries, is set forth on Exhibit "3" to the Declaration. Measurements of rooms set forth on this floor plan are generally taken at the furthest points of each given room (as if the room were a perfect rectangle) without regard for any cutouts or variations. Accordingly, the area of the actual room will typically be smaller than the product obtained by multiplying the stated length and width. All dimensions are estimates which will vary with actual construction, and all floor plans, specifications and other development plans are subject to change and will not necessarily accurately reflect the final plans and specifications for the development. All depictions of appliances, counters, soffits, floor coverings and other matters of detail, including, without limitation, items of finish and decoration, are conceptual only and are not necessarily included in each Unit.

ORAL REPRESENTATIONS CANNOT BE RELIED UPON AS CORRECTLY STATING THE REPRESENTATIONS OF THE DEVELOPER. FOR CORRECT REPRESENTATIONS, REFERENCE SHOULD BE MADE TO THE DOCUMENTS REQUIRED BY SECTION 718.503, FLORIDA STATUTES, TO BE FURNISHED BY A DEVELOPER TO A BUYER OR LESSEE. These materials are not intended to be an offer to sell, or solicitation to buy a unit in the condominium.





OCEAN PARK  
SOUTH BEACH

Beach House 05  
Second Level




OCEAN PARK  
SOUTH BEACH

Sales Loft  
135 Ocean Drive, Miami Beach, FL 33139  
305-800-SOBE (7623)

[OceanParkSobe.com](http://OceanParkSobe.com)

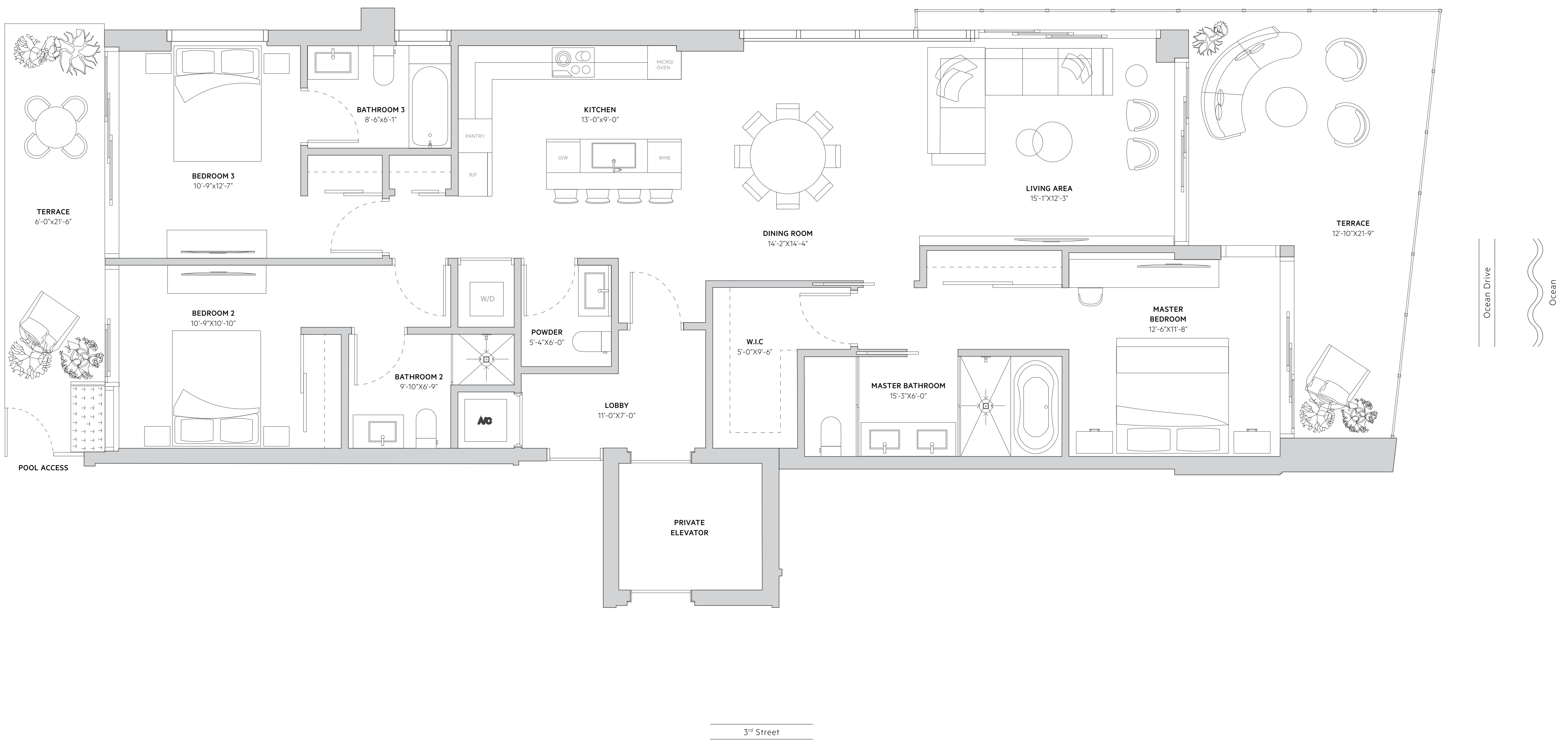
These materials are not intended to be an offer to sell, or solicitation to buy a unit in the condominium. Such an offering shall only be made pursuant to the prospectus/offer circular for the condominium and no statements should be relied upon unless made in the prospectus or in the applicable purchase agreement. Multiplan Real Estate Asset Management ("Multiplan REAM") is not the project Developer. This Condominium is being developed by 312 Ocean Park, LLC, a Florida limited liability company, which has a limited right to use the trademarked names and logos of Multiplan REAM. Any and all statements, disclosures and/or representations shall be deemed made by the Developer and not by Multiplan REAM and you agree to look solely to Developer (and not to Multiplan REAM and/or any of its affiliates) with respect to any and all matters relating to the marketing and/or development of the Condominium and with respect to the sales of units in the Condominium. Additionally, Multiplan Empreendimentos Imobiliarios ("Multiplan Brazil") is not related to, or an affiliate of, Multiplan REAM or the Developer. Any and all statements, disclosures and/or representations shall be deemed made by the Developer and not by Multiplan Brazil and you agree to look solely to Developer (and not to Multiplan Brazil and/or any of its affiliates) with respect to any and all matters relating to the marketing and/or development of the Condominium and with respect to the sales of units in the Condominium. Stated square footages and dimensions are measured to the exterior boundaries of the exterior walls and the centerline of interior demising walls and in fact vary from the square footage and dimensions that would be determined by using the description and definition of the "Unit" set forth in the Declaration (which generally only includes the interior airspace between the perimeter walls and excludes all interior structural components and other common elements).

ORAL REPRESENTATIONS CANNOT BE RELIED UPON AS CORRECTLY STATING THE REPRESENTATIONS OF THE DEVELOPER. FOR CORRECT REPRESENTATIONS, REFERENCE SHOULD BE MADE TO THE DOCUMENTS REQUIRED BY SECTION 718.503, FLORIDA STATUTES. TO BE FURNISHED BY A DEVELOPER TO A BUYER OR LESSEE. These materials are not intended to be an offer to sell, or solicitation to buy a unit in the condominium.



**Beach House 05**  
Second Level

3 Bedrooms | 3.5 Bathrooms | Private Terraces  
 Interior 1,712 SQ FT | 159.1 SQ M  
 Exterior 468 SQ FT | 43.5 SQ M  
 Total 2,180 SQ FT | 202.6 SQ M



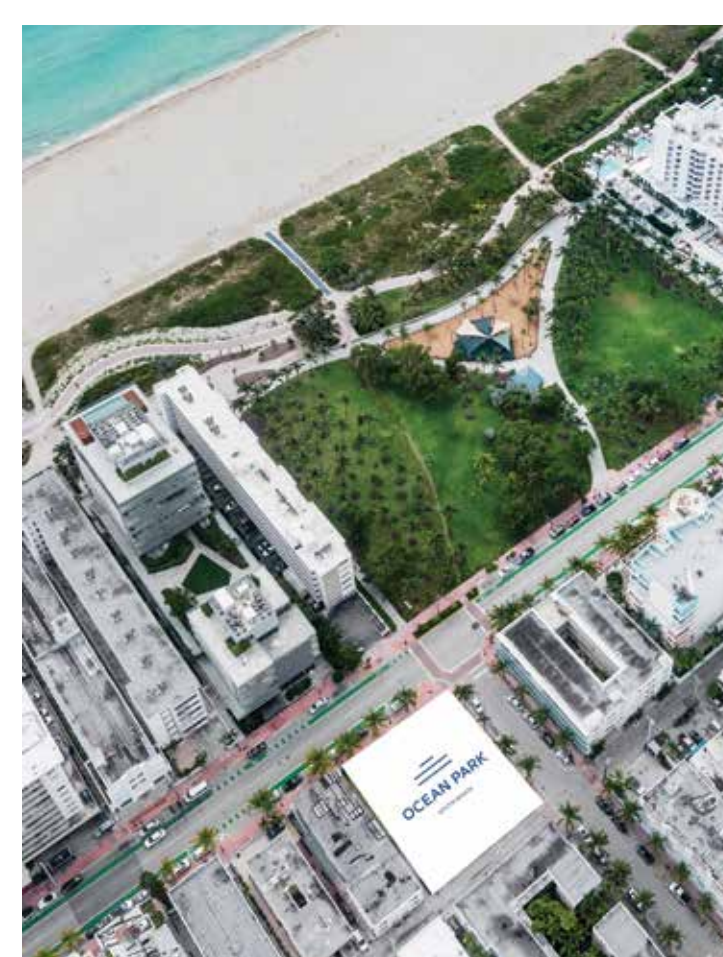
KEY PLAN



FAÇADE



AERIAL VIEW



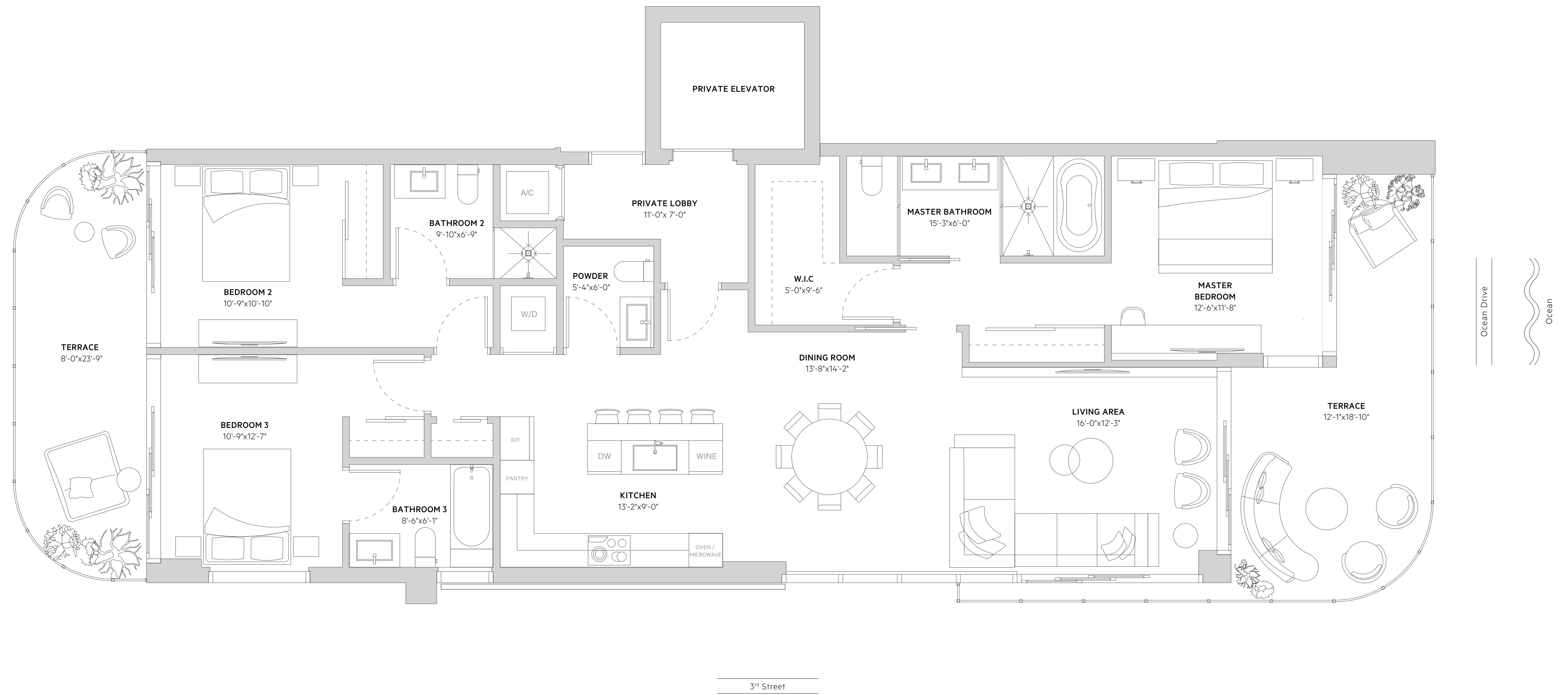
Stated square footages and dimensions are measured to the exterior boundaries of the exterior walls and the centerline of interior demising walls and in fact vary from the square footage and dimensions that would be determined by using the description and definition of the "Unit" set forth in the Declaration (which generally only includes the interior airspace between the perimeter walls and excludes all interior structural components and other common elements). This method is generally used in sales materials and is provided to allow a prospective buyer to compare the Units with units in other condominium projects that utilize the same method. For your reference, the area of the Unit, determined in accordance with these defined unit boundaries, is set forth on Exhibit "3" to the Declaration. Measurements of rooms set forth on this floor plan are generally taken at the furthest points of each given room (as if the room were a perfect rectangle) without regard for any cutouts or variations. Accordingly, the area of the actual room will typically be smaller than the product obtained by multiplying the stated length and width. All dimensions are estimates which will vary with actual construction, and all floor plans, specifications and other development plans are subject to change and will not necessarily accurately reflect the final plans and specifications for the development. All depictions of appliances, counters, soffits, floor coverings and other matters of detail, including, without limitation, items of finish and decoration, are conceptual only and are not necessarily included in each Unit.

ORAL REPRESENTATIONS CANNOT BE RELIED UPON AS CORRECTLY STATING THE REPRESENTATIONS OF THE DEVELOPER. FOR CORRECT REPRESENTATIONS, REFERENCE SHOULD BE MADE TO THE DOCUMENTS REQUIRED BY SECTION 718.503, FLORIDA STATUTES, TO BE FURNISHED BY A DEVELOPER TO A BUYER OR LESSEE. These materials are not intended to be an offer to sell, or solicitation to buy a unit in the condominium.

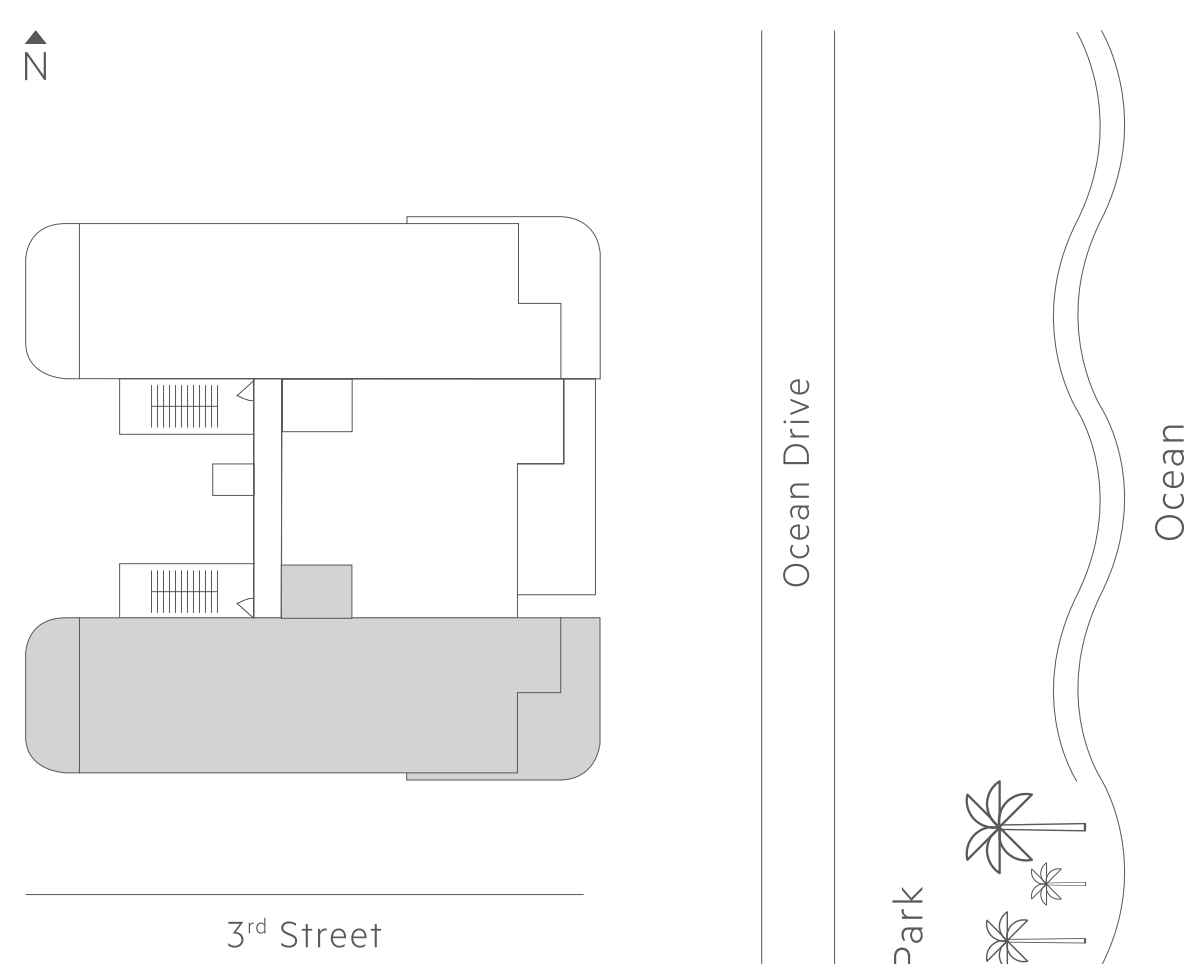
Beach House 06  
Third Level

**Beach House 06**  
Third Level

3 Bedrooms | 3.5 Bathrooms | Private Terraces  
 Interior 1,717 SQ FT | 159.5 SQ M  
 Exterior 438 SQ FT | 40.7 SQ M  
**Total 2,155 SQ FT | 200.2 SQ M**



KEY PLAN



FAÇADE



AERIAL VIEW



Stated square footages and dimensions are measured to the exterior boundaries of the exterior walls and the centerline of interior demising walls and in fact vary from the square footage and dimensions that would be determined by using the description and definition of the "Unit" set forth in the Declaration (which generally only includes the interior airspace between the perimeter walls and excludes all interior structural components and other common elements). This method is generally used in sales materials and is provided to allow a prospective buyer to compare the Units with units in other condominium projects that utilize the same method. For your reference, the area of the Unit, determined in accordance with these defined unit boundaries, is set forth on Exhibit "3" to the Declaration. Measurements of rooms set forth on this floor plan are generally taken at the farthest points of each given room (as if the room were a perfect rectangle) without regard for any cutouts or variations. Accordingly, the area of the actual room will typically be smaller than the product obtained by multiplying the stated length and width. All dimensions are estimates which will vary with actual construction, and all floor plans, specifications and other development plans are subject to change and will not necessarily accurately reflect the final plans and specifications for the development. All depictions of appliances, counters, soffits, floor coverings and other matters of detail, including, without limitation, items of finish and decoration, are conceptual only and are not necessarily included in each Unit.

ORAL REPRESENTATIONS CANNOT BE RELIED UPON AS CORRECTLY STATING THE REPRESENTATIONS OF THE DEVELOPER. FOR CORRECT REPRESENTATIONS, REFERENCE SHOULD BE MADE TO THE DOCUMENTS REQUIRED BY SECTION 718.503, FLORIDA STATUTES, TO BE FURNISHED BY A DEVELOPER TO A BUYER OR LESSEE. These materials are not intended to be an offer to sell, or solicitation to buy a unit in the condominium.



OCEAN PARK  
SOUTH BEACH

Beach House 07  
Third Level




OCEAN PARK  
SOUTH BEACH

Sales Loft  
135 Ocean Drive, Miami Beach, FL 33139  
305-800-SOBE (7623)

[OceanParkSobe.com](http://OceanParkSobe.com)

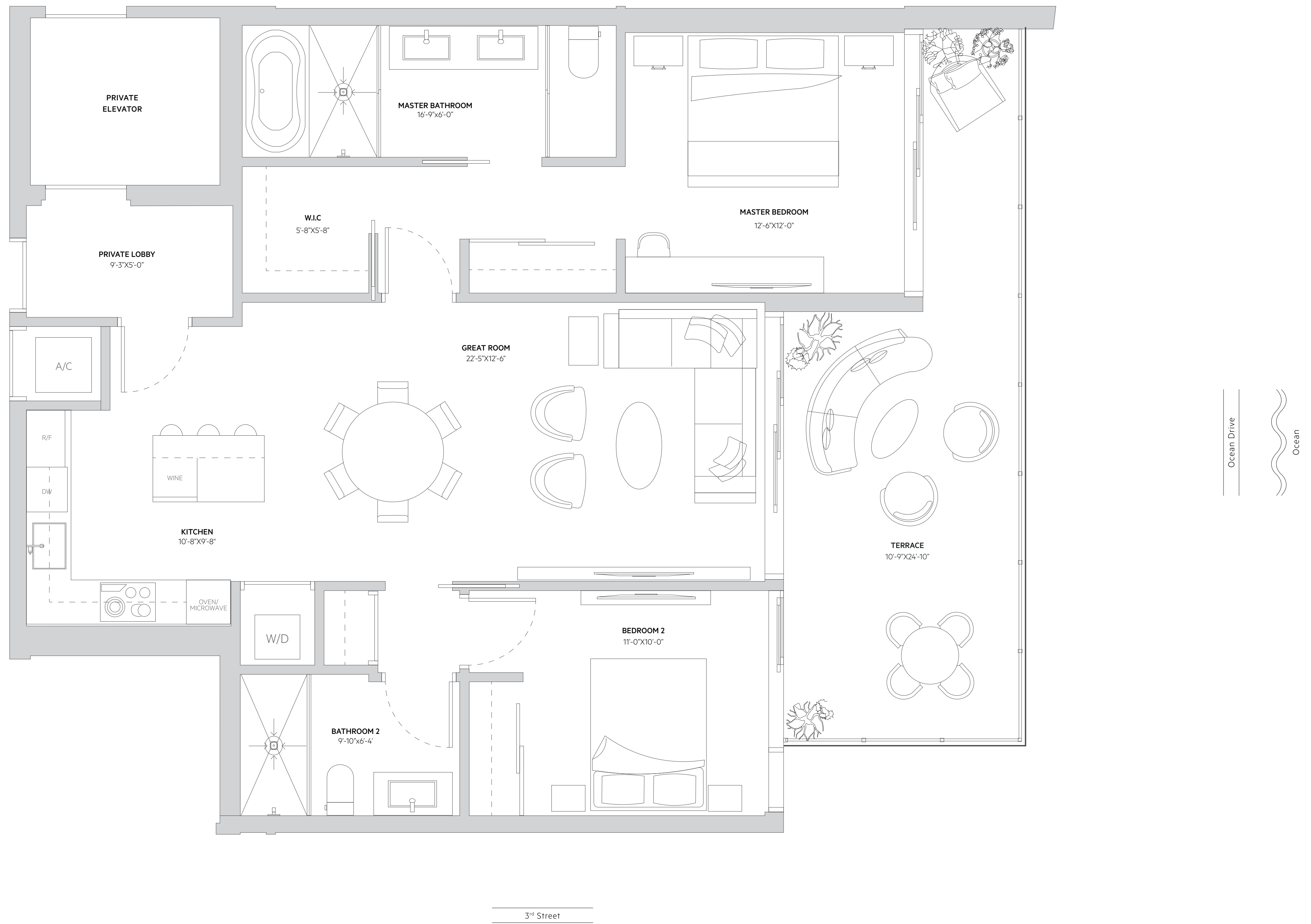
These materials are not intended to be an offer to sell, or solicitation to buy a unit in the condominium. Such an offering shall only be made pursuant to the prospectus/offer circular for the condominium and no statements should be relied upon unless made in the prospectus or in the applicable purchase agreement. Multiplan Real Estate Asset Management ("Multiplan REAM") is not the project Developer. This Condominium is being developed by 312 Ocean Park, LLC, a Florida limited liability company, which has a limited right to use the trademarked names and logos of Multiplan REAM. Any and all statements, disclosures and/or representations shall be deemed made by the Developer and not by Multiplan REAM and you agree to look solely to Developer (and not to Multiplan REAM and/or any of its affiliates) with respect to any and all matters relating to the marketing and/or development of the Condominium and with respect to the sales of units in the Condominium. Additionally, Multiplan Empreendimentos Imobiliarios ("Multiplan Brazil") is not related to, or an affiliate of, Multiplan REAM or the Developer. Any and all statements, disclosures and/or representations shall be deemed made by the Developer and not by Multiplan Brazil and you agree to look solely to Developer (and not to Multiplan Brazil and/or any of its affiliates) with respect to any and all matters relating to the marketing and/or development of the Condominium and with respect to the sales of units in the Condominium. Stated square footages and dimensions are measured to the exterior boundaries of the exterior walls and the centerline of interior demising walls and in fact vary from the square footage and dimensions that would be determined by using the description and definition of the "Unit" set forth in the Declaration (which generally only includes the interior airspace between the perimeter walls and excludes all interior structural components and other common elements).

ORAL REPRESENTATIONS CANNOT BE RELIED UPON AS CORRECTLY STATING THE REPRESENTATIONS OF THE DEVELOPER. FOR CORRECT REPRESENTATIONS, REFERENCE SHOULD BE MADE TO THE DOCUMENTS REQUIRED BY SECTION 718.503, FLORIDA STATUTES. TO BE FURNISHED BY A DEVELOPER TO A BUYER OR LESSEE. These materials are not intended to be an offer to sell, or solicitation to buy a unit in the condominium.



**Beach House 07**  
Third Level

2 Bedrooms | 2 Bathrooms | Private Terrace  
Interior 1,160 SQ FT | 107.8 SQ M  
Exterior 267 SQ FT | 24.8 SQ M  
Total 1,427 SQ FT | 132.6 SQ M



KEY PLAN



FAÇADE



AERIAL VIEW



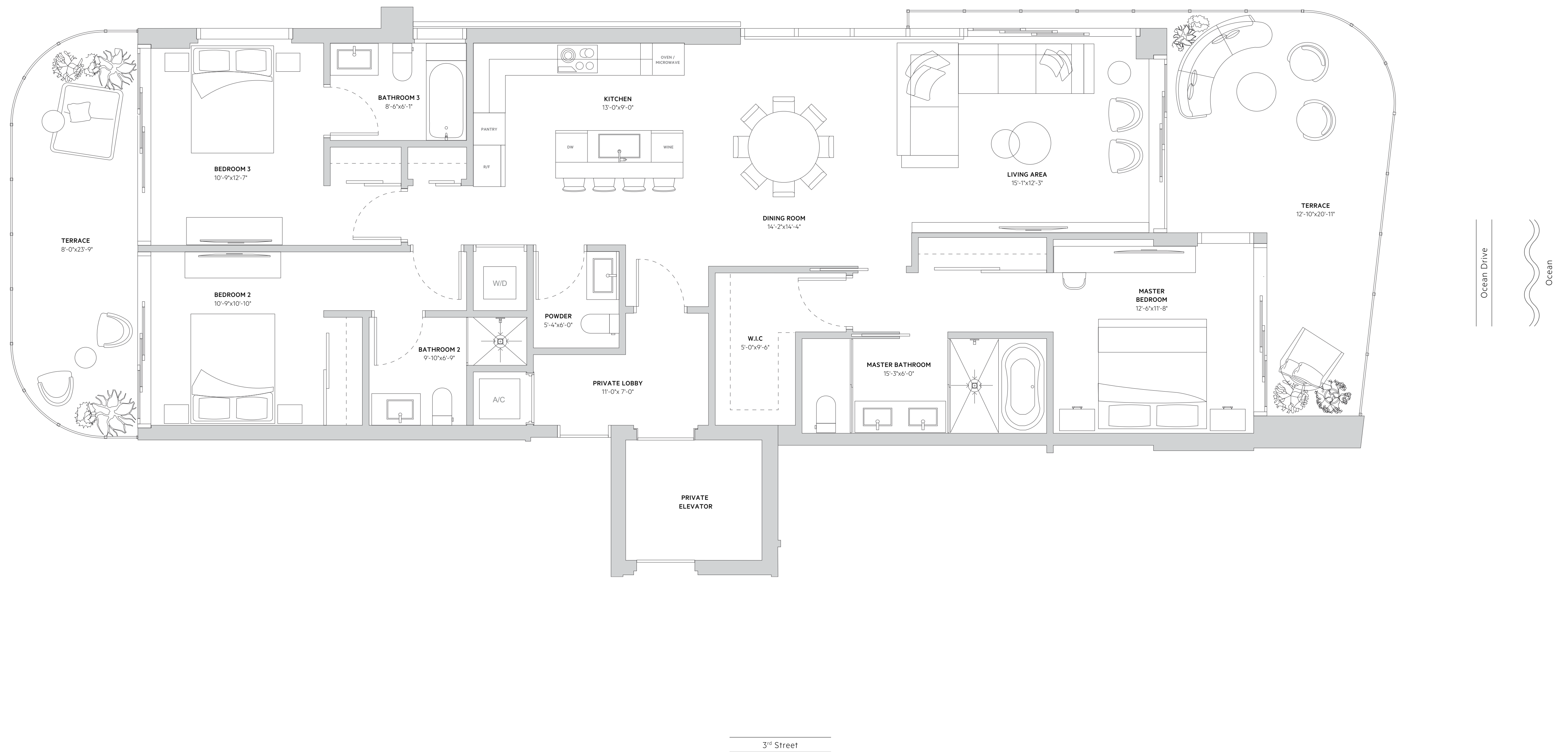
Stated square footages and dimensions are measured to the exterior boundaries of the exterior walls and the centerline of interior demising walls and in fact vary from the square footage and dimensions that would be determined by using the description and definition of the "Unit" set forth in the Declaration (which generally only includes the interior airspace between the perimeter walls and excludes all interior structural components and other common elements). This method is generally used in sales materials and is provided to allow a prospective buyer to compare the Units with units in other condominium projects that utilize the same method. For your reference, the area of the Unit, determined in accordance with these defined unit boundaries, is set forth on Exhibit "3" to the Declaration. Measurements of rooms set forth on this floor plan are generally taken at the furthest points of each given room (as if the room were a perfect rectangle) without regard for any cutouts or variations. Accordingly, the area of the actual room will typically be smaller than the product obtained by multiplying the stated length and width. All dimensions are estimates which will vary with actual construction, and all floor plans, specifications and other development plans are subject to change and will not necessarily accurately reflect the final plans and specifications for the development. All depictions of appliances, counters, soffits, floor coverings and other matters of detail, including, without limitation, items of finish and decoration, are conceptual only and are not necessarily included in each Unit.

**ORAL REPRESENTATIONS CANNOT BE RELIED UPON AS CORRECTLY STATING THE REPRESENTATIONS OF THE DEVELOPER. FOR CORRECT REPRESENTATIONS, REFERENCE SHOULD BE MADE TO THE DOCUMENTS REQUIRED BY SECTION 718.503, FLORIDA STATUTES, TO BE FURNISHED BY A DEVELOPER TO A BUYER OR LESSEE.** These materials are not intended to be an offer to sell, or solicitation to buy a unit in the condominium.

Beach House 08  
Third Level

**Beach House 08**  
Third Level

3 Bedrooms | 3.5 Bathrooms | Private Terraces  
Interior 1,714 SQ FT | 159.2 SQ M  
Exterior 481 SQ FT | 44.7 SQ M  
Total 2,195 SQ FT | 203.9 SQ M



KEY PLAN



FAÇADE



AERIAL VIEW



Stated square footages and dimensions are measured to the exterior boundaries of the exterior walls and the centerline of interior demising walls and in fact vary from the square footage and dimensions that would be determined by using the description and definition of the "Unit" set forth in the Declaration (which generally only includes the interior airspace between the perimeter walls and excludes all interior structural components and other common elements). This method is generally used in sales materials and is provided to allow a prospective buyer to compare the Units with units in other condominium projects that utilize the same method. For your reference, the area of the Unit, determined in accordance with these defined unit boundaries, is set forth on Exhibit "3" to the Declaration. Measurements of rooms set forth on this floor plan are generally taken at the furthest points of each given room (as if the room were a perfect rectangle) without regard for any cutouts or variations. Accordingly, the area of the actual room will typically be smaller than the product obtained by multiplying the stated length and width. All dimensions are estimates which will vary with actual construction, and all floor plans, specifications and other development plans are subject to change and will not necessarily accurately reflect the final plans and specifications for the development. All depictions of appliances, counters, soffits, floor coverings and other matters of detail, including, without limitation, items of finish and decoration, are conceptual only and are not necessarily included in each Unit.

ORAL REPRESENTATIONS CANNOT BE RELIED UPON AS CORRECTLY STATING THE REPRESENTATIONS OF THE DEVELOPER. FOR CORRECT REPRESENTATIONS, REFERENCE SHOULD BE MADE TO THE DOCUMENTS REQUIRED BY SECTION 718.503, FLORIDA STATUTES, TO BE FURNISHED BY A DEVELOPER TO A BUYER OR LESSEE. These materials are not intended to be an offer to sell, or solicitation to buy a unit in the condominium.





OCEAN PARK  
SOUTH BEACH

Penthouse 01  
Fourth Level




OCEAN PARK  
SOUTH BEACH

Sales Loft  
135 Ocean Drive, Miami Beach, FL 33139  
305-800-SOBE (7623)

[OceanParkSobe.com](http://OceanParkSobe.com)

These materials are not intended to be an offer to sell, or solicitation to buy a unit in the condominium. Such an offering shall only be made pursuant to the prospectus/offering circular for the condominium and no statements should be relied upon unless made in the prospectus or in the applicable purchase agreement. Multiplan Real Estate Asset Management ("Multiplan REAM") is not the project Developer. This Condominium is being developed by 312 Ocean Park, LLC, a Florida limited liability company, which has a limited right to use the trademarked names and logos of Multiplan REAM. Any and all statements, disclosures and/or representations shall be deemed made by the Developer and not by Multiplan REAM and you agree to look solely to Developer (and not to Multiplan REAM and/or any of its affiliates) with respect to any and all matters relating to the marketing and/or development of the Condominium and with respect to the sales of units in the Condominium. Additionally, Multiplan Empreendimentos Imobiliarios ("Multiplan Brazil") is not related to, or an affiliate of, Multiplan REAM or the Developer. Any and all statements, disclosures and/or representations shall be deemed made by the Developer and not by Multiplan Brazil and you agree to look solely to Developer (and not to Multiplan Brazil and/or any of its affiliates) with respect to any and all matters relating to the marketing and/or development of the Condominium and with respect to the sales of units in the Condominium. Stated square footages and dimensions are measured to the exterior boundaries of the exterior walls and the centerline of interior demising walls and in fact vary from the square footage and dimensions that would be determined by using the description and definition of the "Unit" set forth in the Declaration (which generally only includes the interior airspace between the perimeter walls and excludes all interior structural components and other common elements).

ORAL REPRESENTATIONS CANNOT BE RELIED UPON AS CORRECTLY STATING THE REPRESENTATIONS OF THE DEVELOPER. FOR CORRECT REPRESENTATIONS, REFERENCE SHOULD BE MADE TO THE DOCUMENTS REQUIRED BY SECTION 718.503, FLORIDA STATUTES. TO BE FURNISHED BY A DEVELOPER TO A BUYER OR LESSEE. These materials are not intended to be an offer to sell, or solicitation to buy a unit in the condominium.



## Penthouse 01

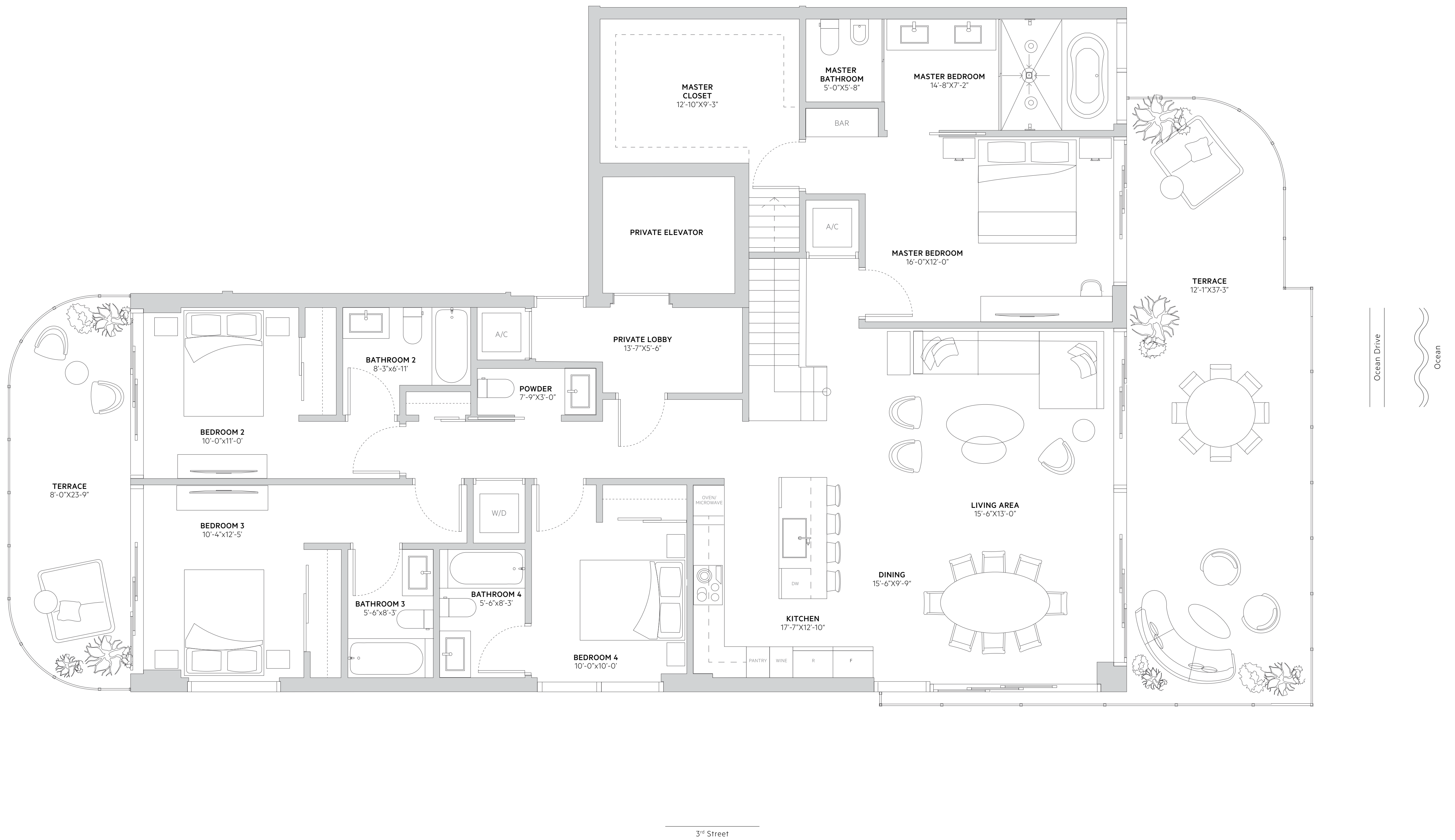
Fourth Level

4 Bedrooms | 4.5 Bathrooms | Private Terraces  
Rooftop 1/2 Bath | Pool & Summer Kitchen

Interior 2,393 SQ FT | 222.3 SQ M

Exterior 2,224 SQ FT | 206.6 SQ M

**Total 4,617 SQ FT | 428.9 SQ M**



KEY PLAN




FAÇADE



AERIAL VIEW



Stated square footages and dimensions are measured to the exterior boundaries of the exterior walls and the centerline of interior demising walls and in fact vary from the square footage and dimensions that would be determined by using the description and definition of the "Unit" set forth in the Declaration (which generally only includes the interior airspace between the perimeter walls and excludes all interior structural components and other common elements). This method is generally used in sales materials and is provided to allow a prospective buyer to compare the Units with units in other condominium projects that utilize the same method. For your reference, the area of the Unit, determined in accordance with these defined unit boundaries, is set forth on Exhibit "3" to the Declaration. Measurements of rooms set forth on this floor plan are generally taken at the farthest points of each given room (as if the room were a perfect rectangle) without regard for any cutouts or variations. Accordingly, the area of the actual room will typically be smaller than the product obtained by multiplying the stated length and width. All dimensions are estimates which will vary with actual construction, and all floor plans, specifications and other development plans are subject to change and will not necessarily accurately reflect the final plans and specifications for the development. All depictions of appliances, counters, soffits, floor coverings and other matters of detail, including, without limitation, items of finish and decoration, are conceptual only and are not necessarily included in each Unit.

 ORAL REPRESENTATIONS CANNOT BE RELIED UPON AS CORRECTLY STATING THE REPRESENTATIONS OF THE DEVELOPER. FOR CORRECT REPRESENTATIONS, REFERENCE SHOULD BE MADE TO THE DOCUMENTS REQUIRED BY SECTION 718.503, FLORIDA STATUTES, TO BE FURNISHED BY A DEVELOPER TO A BUYER OR LESSEE. These materials are not intended to be an offer to sell, or solicitation to buy a unit in the condominium.



OCEAN PARK  
SOUTH BEACH

Penthouse 02  
Fourth Level



OCEAN PARK  
SOUTH BEACH

Sales Loft  
135 Ocean Drive, Miami Beach, FL 33139  
305-800-SOBE (7623)

[OceanParkSobe.com](http://OceanParkSobe.com)

These materials are not intended to be an offer to sell, or solicitation to buy a unit in the condominium. Such an offering shall only be made pursuant to the prospectus/offer circular for the condominium and no statements should be relied upon unless made in the prospectus or in the applicable purchase agreement. Multiplan Real Estate Asset Management ("Multiplan REAM") is not the project Developer. This Condominium is being developed by 312 Ocean Park, LLC, a Florida limited liability company, which has a limited right to use the trademarked names and logos of Multiplan REAM. Any and all statements, disclosures and/or representations shall be deemed made by the Developer and not by Multiplan REAM and you agree to look solely to Developer (and not to Multiplan REAM and/or any of its affiliates) with respect to any and all matters relating to the marketing and/or development of the Condominium and with respect to the sales of units in the Condominium. Additionally, Multiplan Empreendimentos Imobiliarios ("Multiplan Brazil") is not related to, or an affiliate of, Multiplan REAM or the Developer. Any and all statements, disclosures and/or representations shall be deemed made by the Developer and not by Multiplan Brazil and you agree to look solely to Developer (and not to Multiplan Brazil and/or any of its affiliates) with respect to any and all matters relating to the marketing and/or development of the Condominium and with respect to the sales of units in the Condominium. Stated square footages and dimensions are measured to the exterior boundaries of the exterior walls and the centerline of interior demising walls and in fact vary from the square footage and dimensions that would be determined by using the description and definition of the "Unit" set forth in the Declaration (which generally only includes the interior airspace between the perimeter walls and excludes all interior structural components and other common elements).

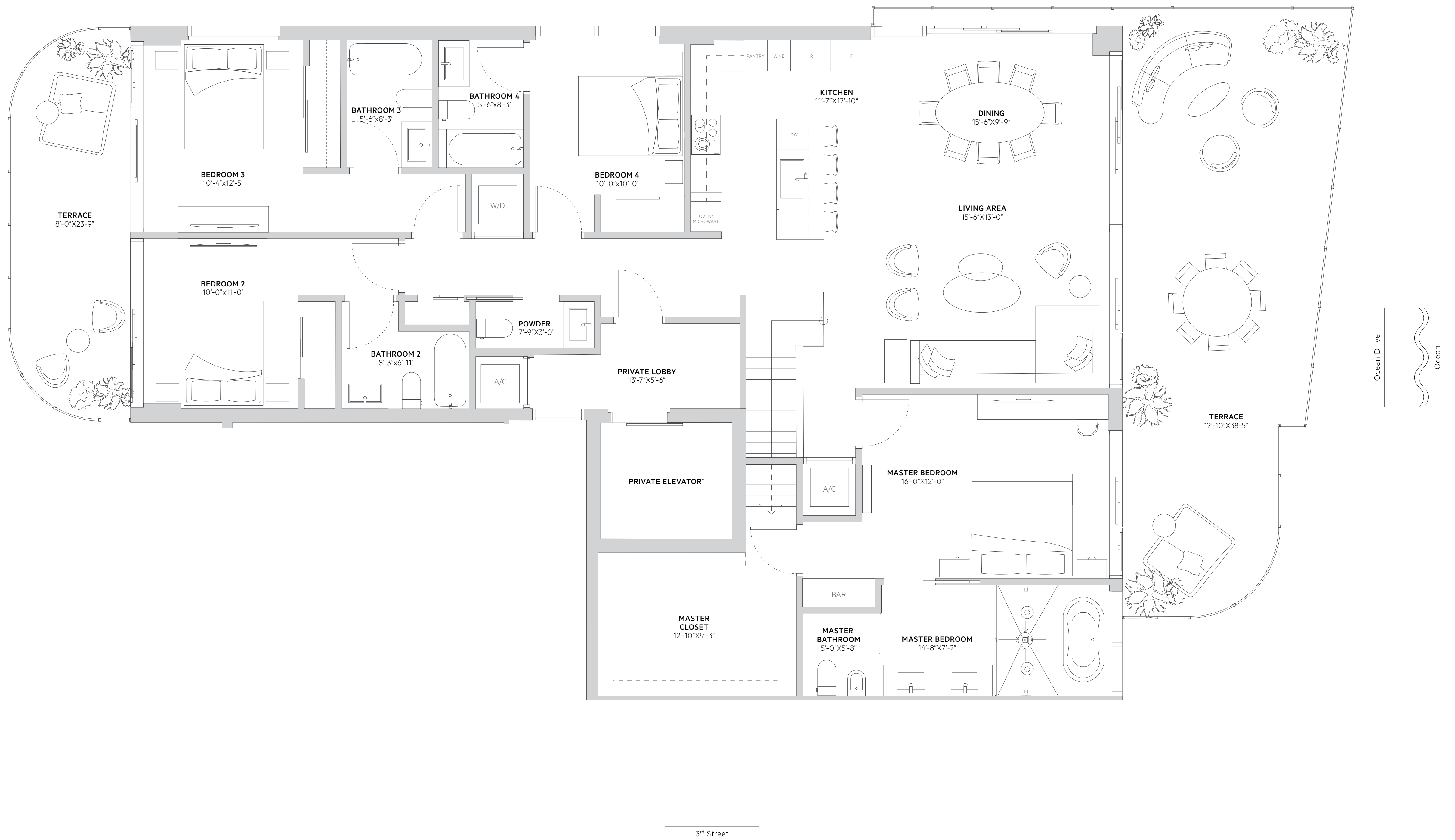
ORAL REPRESENTATIONS CANNOT BE RELIED UPON AS CORRECTLY STATING THE REPRESENTATIONS OF THE DEVELOPER. FOR CORRECT REPRESENTATIONS, REFERENCE SHOULD BE MADE TO THE DOCUMENTS REQUIRED BY SECTION 718.503, FLORIDA STATUTES. TO BE FURNISHED BY A DEVELOPER TO A BUYER OR LESSEE. These materials are not intended to be an offer to sell, or solicitation to buy a unit in the condominium.



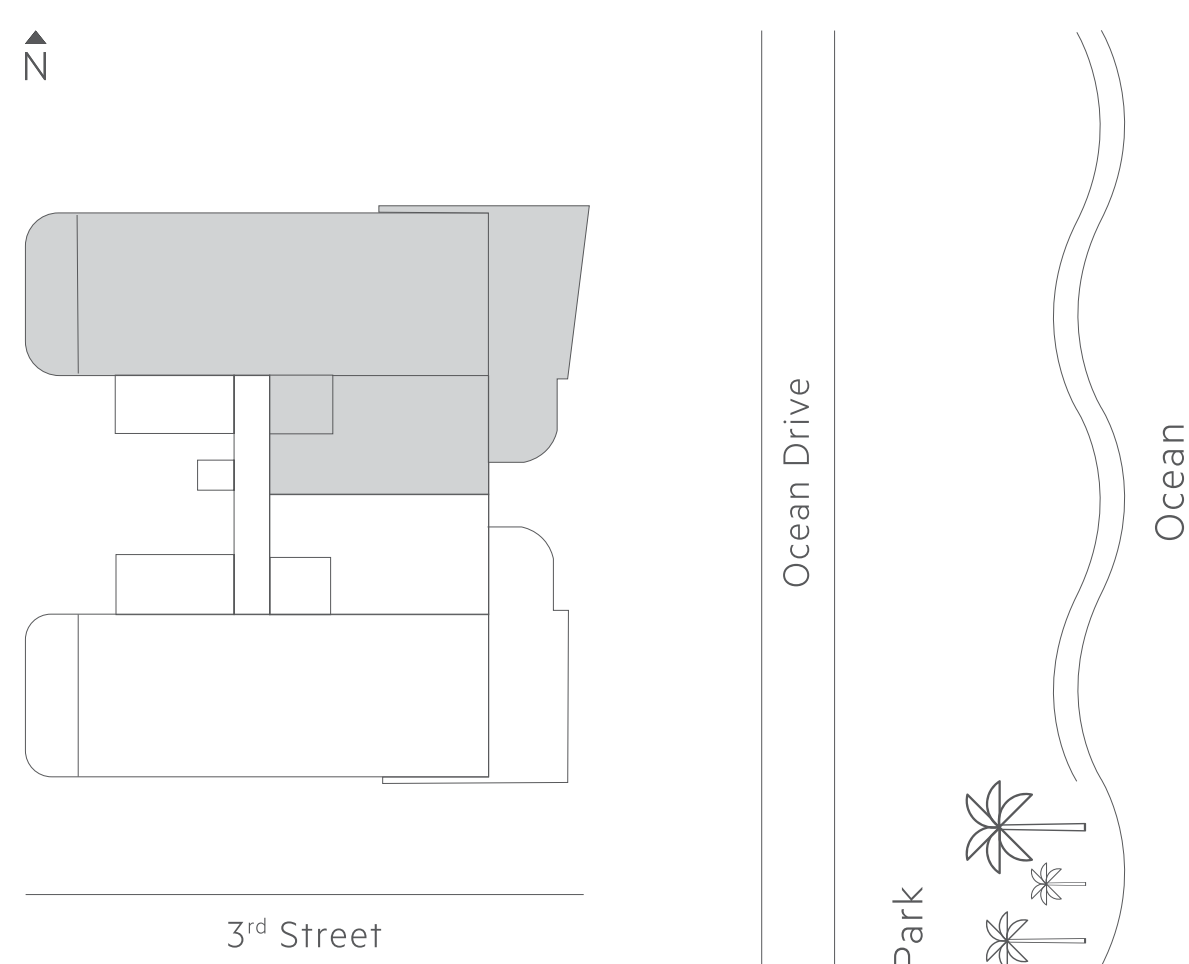
## Penthouse 02

Fourth Level

4 Bedrooms | 4.5 Bathrooms | Private Terraces  
 Rooftop 1/2 Bath | Pool & Summer Kitchen  
 Interior 2,393 SQ FT | 222.3 SQ M  
 Exterior 2,269 SQ FT | 210.8 SQ M  
**Total 4,662 SQ FT | 433.1 SQ M**



KEY PLAN



FAÇADE



AERIAL VIEW



Stated square footages and dimensions are measured to the exterior boundaries of the exterior walls and the centerline of interior demising walls and in fact vary from the square footage and dimensions that would be determined by using the description and definition of the "Unit" set forth in the Declaration (which generally only includes the interior airspace between the perimeter walls and excludes all interior structural components and other common elements). This method is generally used in sales materials and is provided to allow a prospective buyer to compare the Units with units in other condominium projects that utilize the same method. For your reference, the area of the Unit, determined in accordance with these defined unit boundaries, is set forth on Exhibit "3" to the Declaration. Measurements of rooms set forth on this floor plan are generally taken at the farthest points of each given room (as if the room were a perfect rectangle) without regard for any cutouts or variations. Accordingly, the area of the actual room will typically be smaller than the product obtained by multiplying the stated length and width. All dimensions are estimates which will vary with actual construction, and all floor plans, specifications and other development plans are subject to change and will not necessarily accurately reflect the final plans and specifications for the development. All depictions of appliances, counters, soffits, floor coverings and other matters of detail, including, without limitation, items of finish and decoration, are conceptual only and are not necessarily included in each Unit.

ORAL REPRESENTATIONS CANNOT BE RELIED UPON AS CORRECTLY STATING THE REPRESENTATIONS OF THE DEVELOPER. FOR CORRECT REPRESENTATIONS, REFERENCE SHOULD BE MADE TO THE DOCUMENTS REQUIRED BY SECTION 718.503, FLORIDA STATUTES, TO BE FURNISHED BY A DEVELOPER TO A BUYER OR LESSEE. These materials are not intended to be an offer to sell, or solicitation to buy a unit in the condominium.



OCEAN PARK  
SOUTH BEACH

Penthouse 01  
Private Terrace



OCEAN PARK  
SOUTH BEACH

Sales Loft  
135 Ocean Drive, Miami Beach, FL 33139  
305-800-SOBE (7623)

[OceanParkSobe.com](http://OceanParkSobe.com)

These materials are not intended to be an offer to sell, or solicitation to buy a unit in the condominium. Such an offering shall only be made pursuant to the prospectus/offering circular for the condominium and no statements should be relied upon unless made in the prospectus or in the applicable purchase agreement. Multiplan Real Estate Asset Management ("Multiplan REAM") is not the project Developer. This Condominium is being developed by 312 Ocean Park, LLC, a Florida limited liability company, which has a limited right to use the trademarked names and logos of Multiplan REAM. Any and all statements, disclosures and/or representations shall be deemed made by the Developer and not by Multiplan REAM and you agree to look solely to Developer (and not to Multiplan REAM and/or any of its affiliates) with respect to any and all matters relating to the marketing and/or development of the Condominium and with respect to the sales of units in the Condominium. Additionally, Multiplan Empreendimentos Imobiliarios ("Multiplan Brazil") is not related to, or an affiliate of, Multiplan REAM or the Developer. Any and all statements, disclosures and/or representations shall be deemed made by the Developer and not by Multiplan Brazil and you agree to look solely to Developer (and not to Multiplan Brazil and/or any of its affiliates) with respect to any and all matters relating to the marketing and/or development of the Condominium and with respect to the sales of units in the Condominium. Stated square footages and dimensions are measured to the exterior boundaries of the exterior walls and the centerline of interior demising walls and in fact vary from the square footage and dimensions that would be determined by using the description and definition of the "Unit" set forth in the Declaration (which generally only includes the interior airspace between the perimeter walls and excludes all interior structural components and other common elements).

ORAL REPRESENTATIONS CANNOT BE RELIED UPON AS CORRECTLY STATING THE REPRESENTATIONS OF THE DEVELOPER. FOR CORRECT REPRESENTATIONS, REFERENCE SHOULD BE MADE TO THE DOCUMENTS REQUIRED BY SECTION 718.503, FLORIDA STATUTES. TO BE FURNISHED BY A DEVELOPER TO A BUYER OR LESSEE. These materials are not intended to be an offer to sell, or solicitation to buy a unit in the condominium.



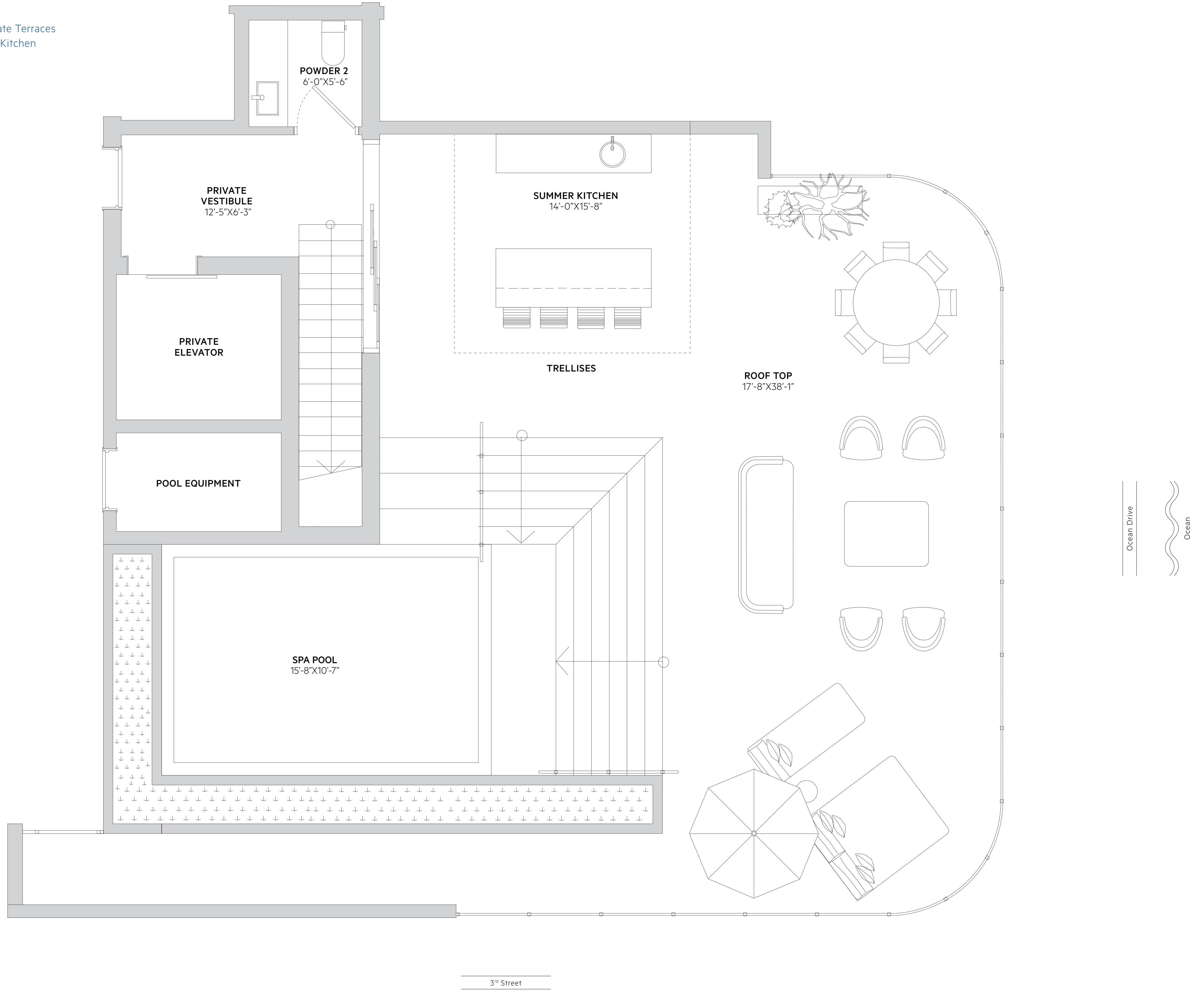
**Penthouse 01**  
Private Terrace

4 Bedrooms | 4.5 Bathrooms | Private Terraces  
Rooftop 1/2 Bath | Pool & Summer Kitchen

Interior 2,393 SQ FT | 222.3 SQ M

Exterior 2,224 SQ FT | 206.6 SQ M

**Total 4,617 SQ FT | 428.9 SQ M**



KEY PLAN



FAÇADE



AERIAL VIEW



Stated square footages and dimensions are measured to the exterior boundaries of the exterior walls and the centerline of interior demising walls and in fact vary from the square footage and dimensions that would be determined by using the description and definition of the "Unit" set forth in the Declaration (which generally only includes the interior airspace between the perimeter walls and excludes all interior structural components and other common elements). This method is generally used in sales materials and is provided to allow a prospective buyer to compare the Units with units in other condominium projects that utilize the same method. For your reference, the area of the Unit, determined in accordance with these defined unit boundaries, is set forth on Exhibit "3" to the Declaration. Measurements of rooms set forth on this floor plan are generally taken at the furthest points of each given room (as if the room were a perfect rectangle) without regard for any cutouts or variations. Accordingly, the area of the actual room will typically be smaller than the product obtained by multiplying the stated length and width. All dimensions are estimates which will vary with actual construction, and all floor plans, specifications and other development plans are subject to change and will not necessarily accurately reflect the final plans and specifications for the development. All depictions of appliances, counters, soffits, floor coverings and other matters of detail, including, without limitation, items of finish and decoration, are conceptual only and are not necessarily included in each Unit.

ORAL REPRESENTATIONS CANNOT BE RELIED UPON AS CORRECTLY STATING THE REPRESENTATIONS OF THE DEVELOPER. FOR CORRECT REPRESENTATIONS, REFERENCE SHOULD BE MADE TO THE DOCUMENTS REQUIRED BY SECTION 718.503, FLORIDA STATUTES, TO BE FURNISHED BY A DEVELOPER TO A BUYER OR LESSEE. These materials are not intended to be an offer to sell, or solicitation to buy a unit in the condominium.



OCEAN PARK  
SOUTH BEACH

Penthouse 02  
Private Terrace




OCEAN PARK  
SOUTH BEACH

Sales Loft  
135 Ocean Drive, Miami Beach, FL 33139  
305-800-SOBE (7623)

[OceanParkSobe.com](http://OceanParkSobe.com)

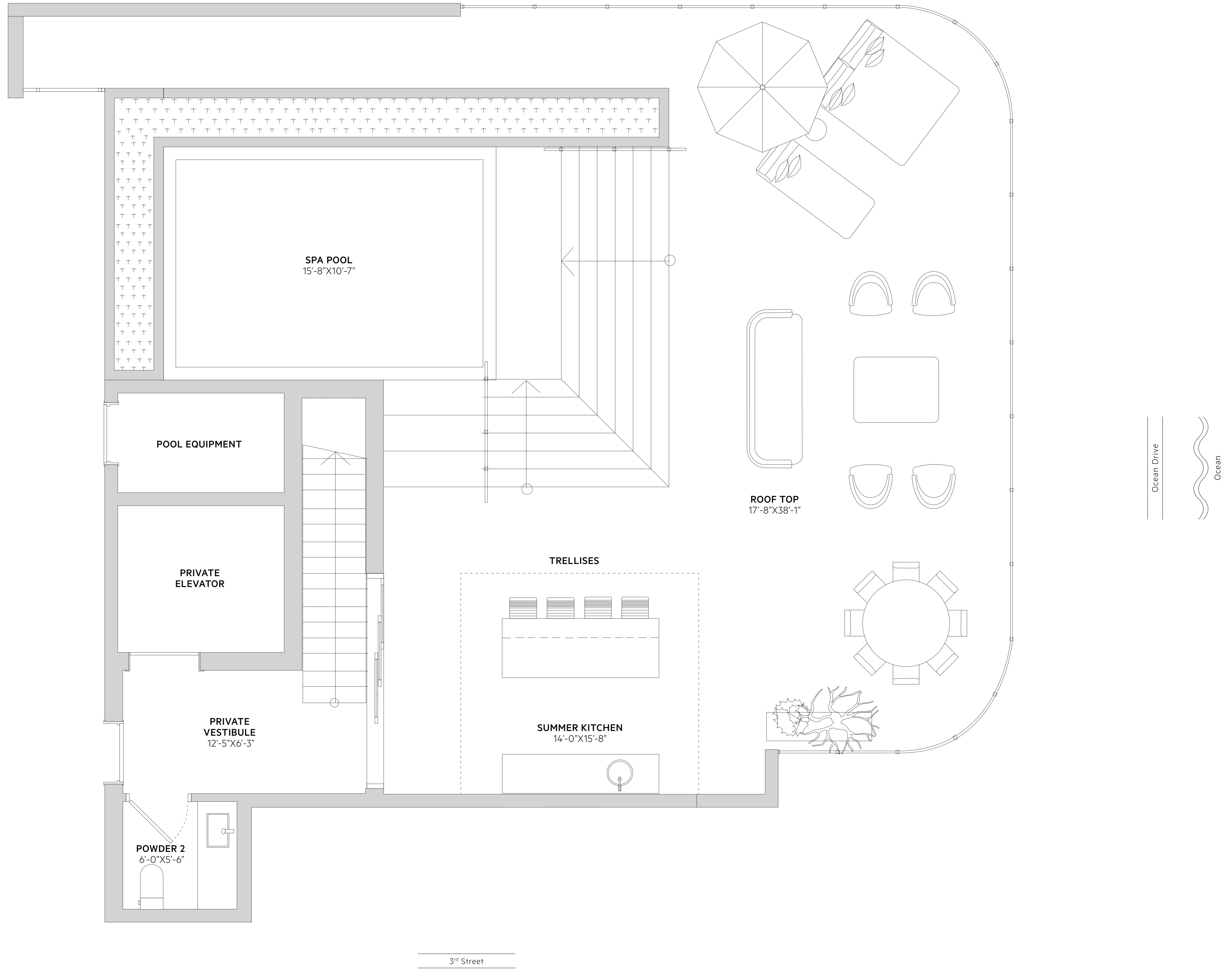
These materials are not intended to be an offer to sell, or solicitation to buy a unit in the condominium. Such an offering shall only be made pursuant to the prospectus/offer circular for the condominium and no statements should be relied upon unless made in the prospectus or in the applicable purchase agreement. Multiplan Real Estate Asset Management ("Multiplan REAM") is not the project Developer. This Condominium is being developed by 312 Ocean Park, LLC, a Florida limited liability company, which has a limited right to use the trademarked names and logos of Multiplan REAM. Any and all statements, disclosures and/or representations shall be deemed made by the Developer and not by Multiplan REAM and you agree to look solely to Developer (and not to Multiplan REAM and/or any of its affiliates) with respect to any and all matters relating to the marketing and/or development of the Condominium and with respect to the sales of units in the Condominium. Additionally, Multiplan Empreendimentos Imobiliarios ("Multiplan Brazil") is not related to, or an affiliate of, Multiplan REAM or the Developer. Any and all statements, disclosures and/or representations shall be deemed made by the Developer and not by Multiplan Brazil and you agree to look solely to Developer (and not to Multiplan Brazil and/or any of its affiliates) with respect to any and all matters relating to the marketing and/or development of the Condominium and with respect to the sales of units in the Condominium. Stated square footages and dimensions are measured to the exterior boundaries of the exterior walls and the centerline of interior demising walls and in fact vary from the square footage and dimensions that would be determined by using the description and definition of the "Unit" set forth in the Declaration (which generally only includes the interior airspace between the perimeter walls and excludes all interior structural components and other common elements).

ORAL REPRESENTATIONS CANNOT BE RELIED UPON AS CORRECTLY STATING THE REPRESENTATIONS OF THE DEVELOPER. FOR CORRECT REPRESENTATIONS, REFERENCE SHOULD BE MADE TO THE DOCUMENTS REQUIRED BY SECTION 718.503, FLORIDA STATUTES. TO BE FURNISHED BY A DEVELOPER TO A BUYER OR LESSEE. These materials are not intended to be an offer to sell, or solicitation to buy a unit in the condominium.

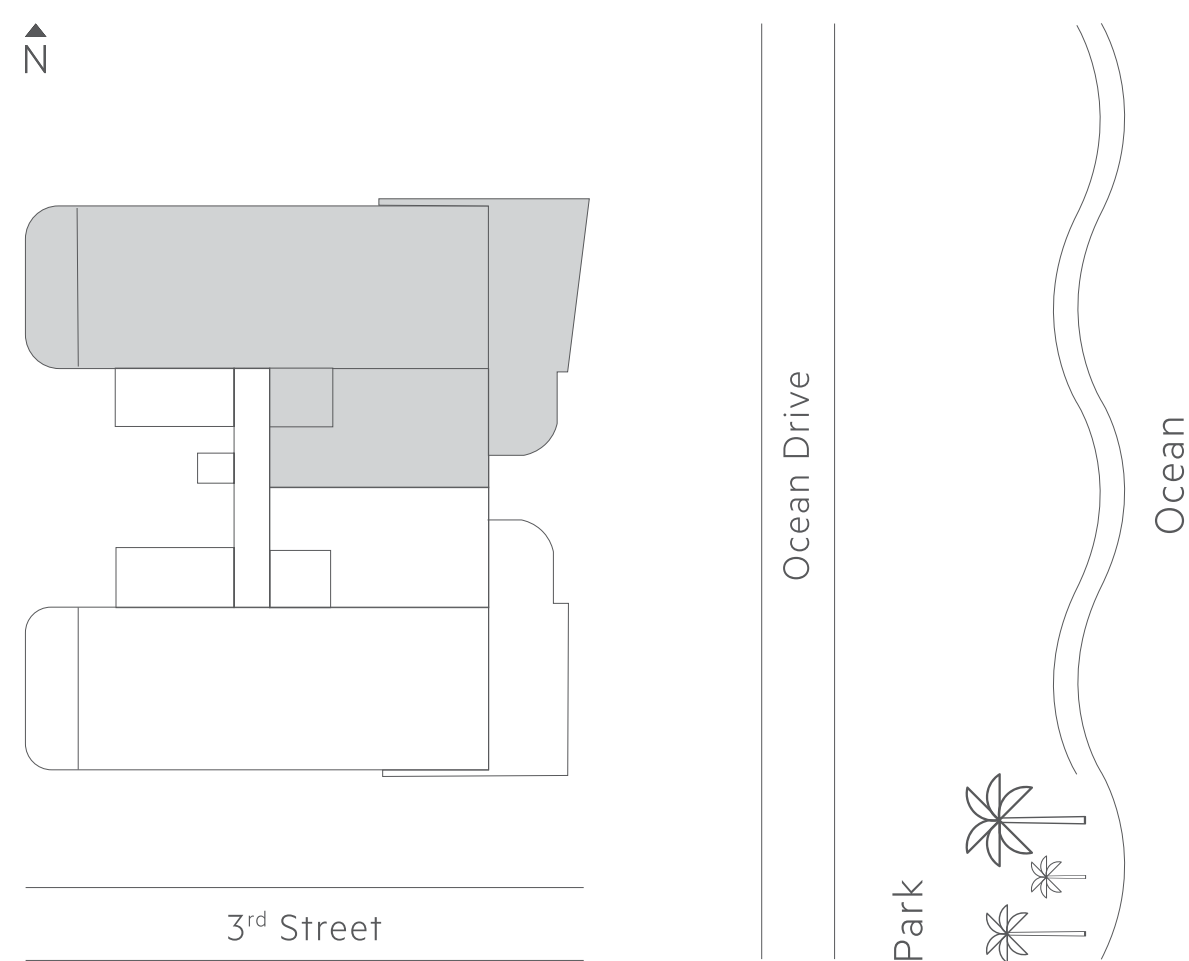


**Penthouse 02**  
Private Terrace

4 Bedrooms | 4.5 Bathrooms | Private Terraces  
Rooftop 1/2 Bath | Pool & Summer Kitchen  
Interior 2,393 SQ FT | 222.3 SQ M  
Exterior 2,269 SQ FT | 210.8 SQ M  
**Total 4,662 SQ FT | 433.1 SQ M**



KEY PLAN



FAÇADE



AERIAL VIEW



Stated square footages and dimensions are measured to the exterior boundaries of the exterior walls and the centerline of interior demising walls and in fact vary from the square footage and dimensions that would be determined by using the description and definition of the "Unit" set forth in the Declaration (which generally only includes the interior airspace between the perimeter walls and excludes all interior structural components and other common elements). This method is generally used in sales materials and is provided to allow a prospective buyer to compare the Units with units in other condominium projects that utilize the same method. For your reference, the area of the Unit, determined in accordance with these defined unit boundaries, is set forth on Exhibit "3" to the Declaration. Measurements of rooms set forth on this floor plan are generally taken at the furthest points of each given room (as if the room were a perfect rectangle) without regard for any cutouts or variations. Accordingly, the area of the actual room will typically be smaller than the product obtained by multiplying the stated length and width. All dimensions are estimates which will vary with actual construction, and all floor plans, specifications and other development plans are subject to change and will not necessarily accurately reflect the final plans and specifications for the development. All depictions of appliances, counters, soffits, floor coverings and other matters of detail, including, without limitation, items of finish and decoration, are conceptual only and are not necessarily included in each Unit.

ORAL REPRESENTATIONS CANNOT BE RELIED UPON AS CORRECTLY STATING THE REPRESENTATIONS OF THE DEVELOPER. FOR CORRECT REPRESENTATIONS, REFERENCE SHOULD BE MADE TO THE DOCUMENTS REQUIRED BY SECTION 718.503, FLORIDA STATUTES, TO BE FURNISHED BY A DEVELOPER TO A BUYER OR LESSEE. These materials are not intended to be an offer to sell, or solicitation to buy a unit in the condominium.