

RESIDENCE

FLOORS

A

3-21

RIVAGE

BAL HARBOUR



RivageBalHarbour.com
305.423.7548

Future residences located at:
10245 Collins Avenue
Bal Harbour, FL 33154



RIVAGE

BAL HARBOUR

RESIDENCE
A

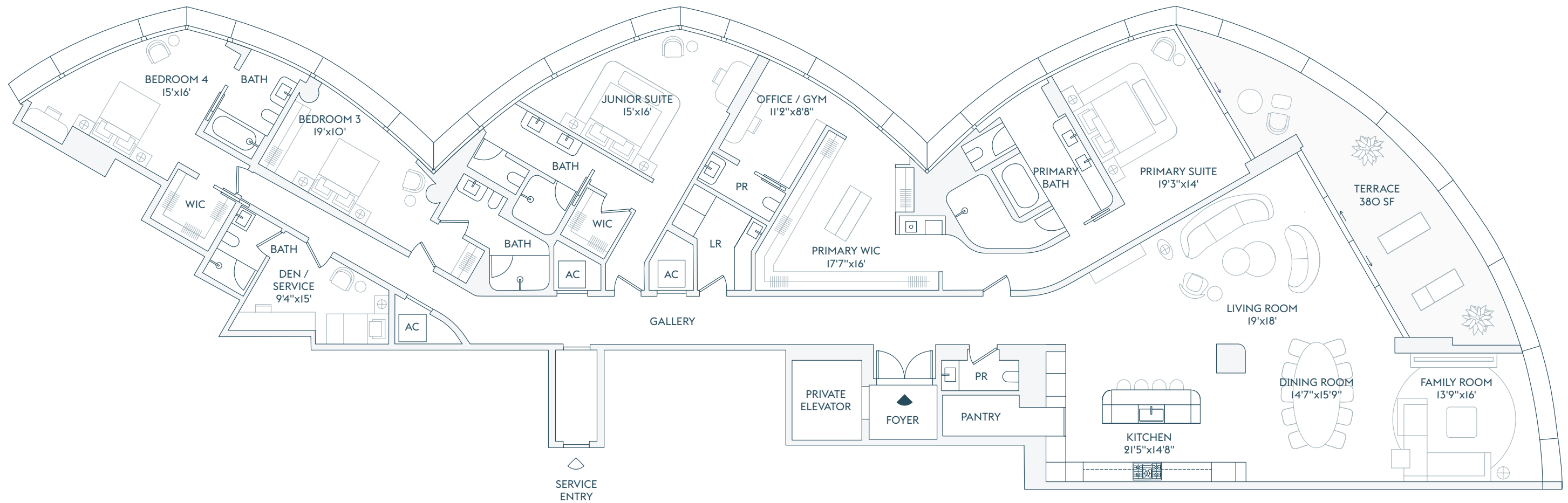
FLOORS
3-21

4 BEDROOMS
5 BATHROOMS
2 POWDER ROOMS
DEN / SERVICE
OFFICE / GYM

INTERIOR
4,810 SF | 446.5 SQM

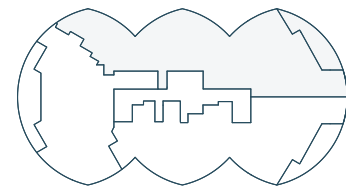
EXTERIOR
380 SF | 35 SQM

TOTAL
5,190 SF | 481.5 SQM



INTRACOASTAL
WATERS

z



ATLANTIC OCEAN

The dimensions stated for this Unit floor plan are approximate because there are various recognized methods for calculating the square footage of a Unit. The square footage stated herein is calculated from the exterior boundaries of the exterior walls to the centerline of interior demising walls without deductions for cutouts, curves, or architectural features. This method typically results in quoted dimensions greater than the dimensions that would be determined by using other accepted methods. The definition of "Unit" and the calculation method to be relied upon is the method of calculation set forth by the Developer in the Developer's prospectus, which method may result in a square footage calculation that is less than the method used herein. Dimensions and Unit configurations are not guaranteed and may change during construction. Depictions of furnishings, fixtures, and other items of personal property are not included with purchase. Uses of space depicted are not guaranteed. Consult the Developer's prospectus to learn Unit dimensions, what is offered with the Unit, and all terms and conditions. 2022 © Carlton Terrace Owner LLC, with all rights reserved.



RESIDENCE

FLOORS

B

3-21

RIVAGE

BAL HARBOUR

RivageBalHarbour.com
305.423.7548

Future residences located at:
10245 Collins Avenue
Bal Harbour, FL 33154



RIVAGE

BAL HARBOUR

RESIDENCE
B

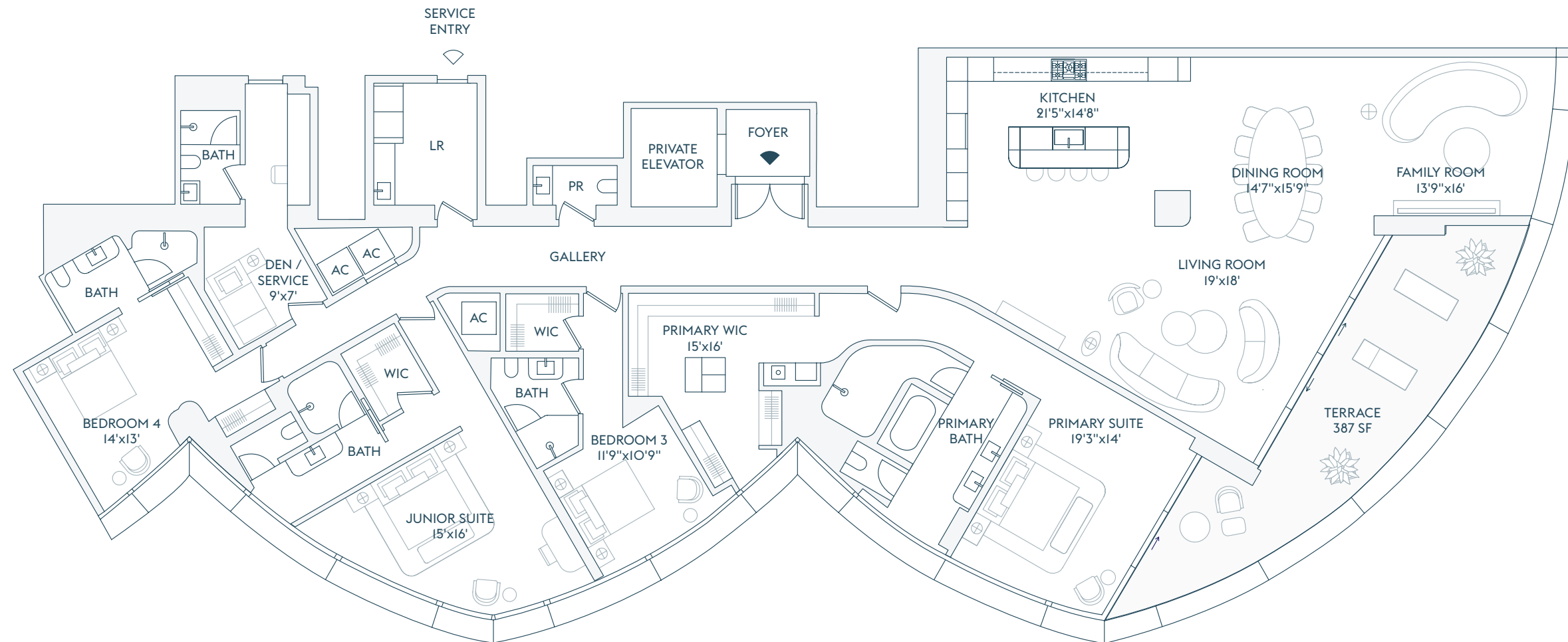
FLOORS
3-21

4 BEDROOMS
5 BATHROOMS
1 POWDER ROOM
DEN / SERVICE

INTERIOR
4,358 SF | 404.5 SQM

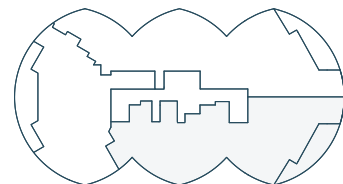
EXTERIOR
387 SF | 36 SQM

TOTAL
4,745 SF | 440.5 SQM



INTRACOASTAL
WATERS

z



ATLANTIC OCEAN

The dimensions stated for this Unit floor plan are approximate because there are various recognized methods for calculating the square footage of a Unit. The square footage stated herein is calculated from the exterior boundaries of the exterior walls to the centerline of interior demising walls without deductions for cutouts, curves, or architectural features. This method typically results in quoted dimensions greater than the dimensions that would be determined by using other accepted methods. The definition of "Unit" and the calculation method to be relied upon is the method of calculation set forth by the Developer in the Developer's prospectus, which method may result in a square footage calculation that is less than the method used herein. Dimensions and Unit configurations are not guaranteed and may change during construction. Depictions of furnishings, fixtures, and other items of personal property are not included with purchase. Uses of space depicted are not guaranteed. Consult the Developer's prospectus to learn Unit dimensions, what is offered with the Unit, and all terms and conditions. 2022 © Carlton Terrace Owner LLC, with all rights reserved.

RESIDENCE

FLOORS

C

3-21

RIVAGE

BAL HARBOUR

RivageBalHarbour.com
305.423.7548

Future residences located at:
10245 Collins Avenue
Bal Harbour, FL 33154



RIVAGE

BAL HARBOUR

RESIDENCE FLOORS

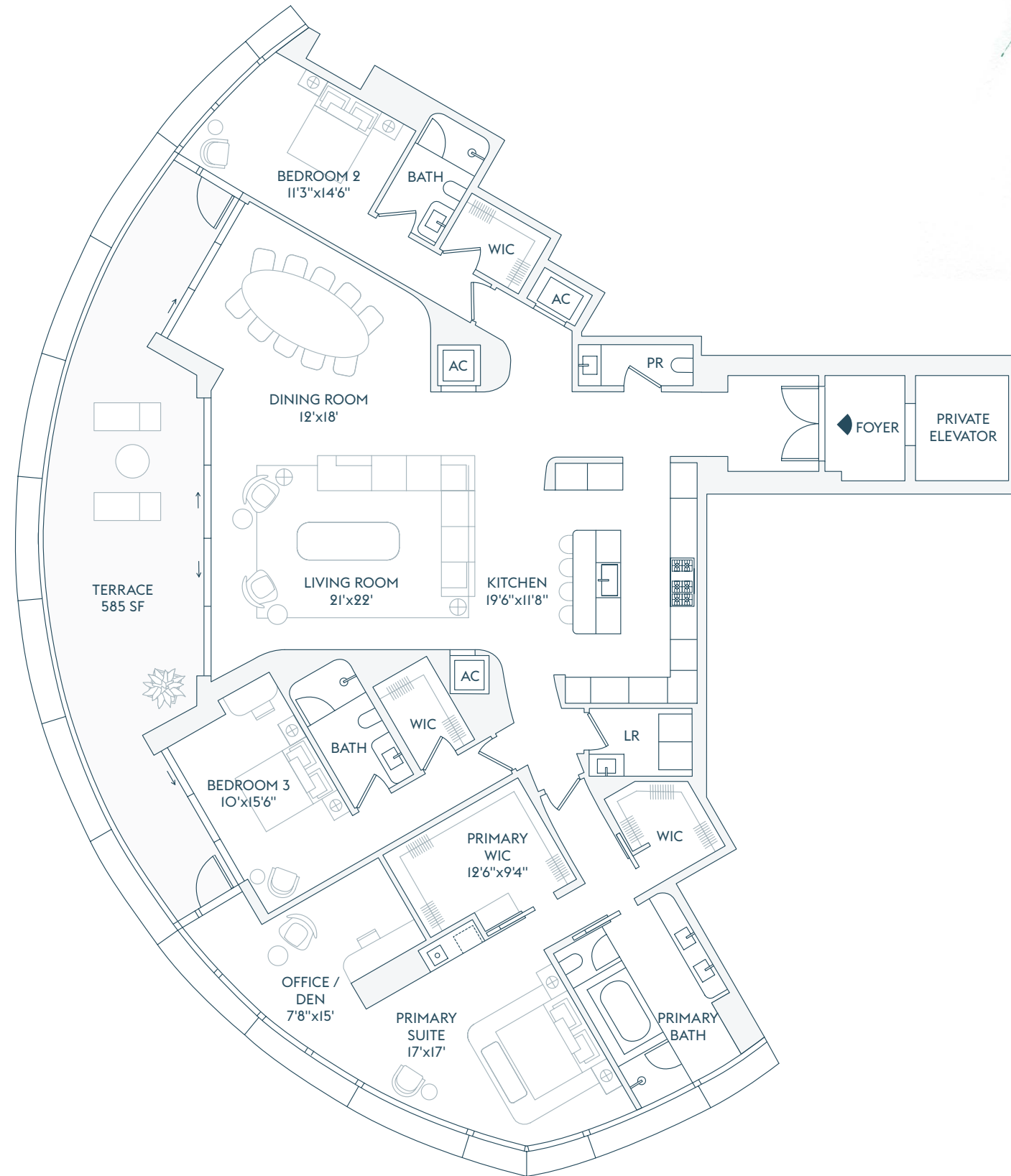
C 3-21

3 BEDROOMS
3 BATHROOMS
1 POWDER ROOM
OFFICE / DEN

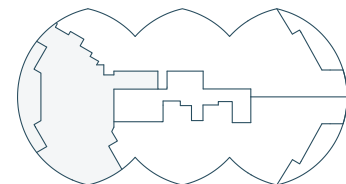
INTERIOR
3,297 SF | 306.5 SQM

EXTERIOR
585 SF | 54 SQM

TOTAL
3,882 SF | 360.5 SQM



INTRACOASTAL WATERS



ATLANTIC OCEAN

The dimensions stated for this Unit floor plan are approximate because there are various recognized methods for calculating the square footage of a Unit. The square footage stated herein is calculated from the exterior boundaries of the exterior walls to the centerline of interior demising walls without deductions for cutouts, curves, or architectural features. This method typically results in quoted dimensions greater than the dimensions that would be determined by using other accepted methods. The definition of "Unit" and the calculation method to be relied upon is the method of calculation set forth by the Developer in the Developer's prospectus, which method may result in a square footage calculation that is less than the method used herein. Dimensions and Unit configurations are not guaranteed and may change during construction. Depictions of furnishings, fixtures, and other items of personal property are not included with purchase. Uses of space depicted are not guaranteed. Consult the Developer's prospectus to learn Unit dimensions, what is offered with the Unit, and all terms and conditions. 2022 © Carlton Terrace Owner LLC, with all rights reserved.