



ST REGIS
MIAMI
THE RESIDENCES

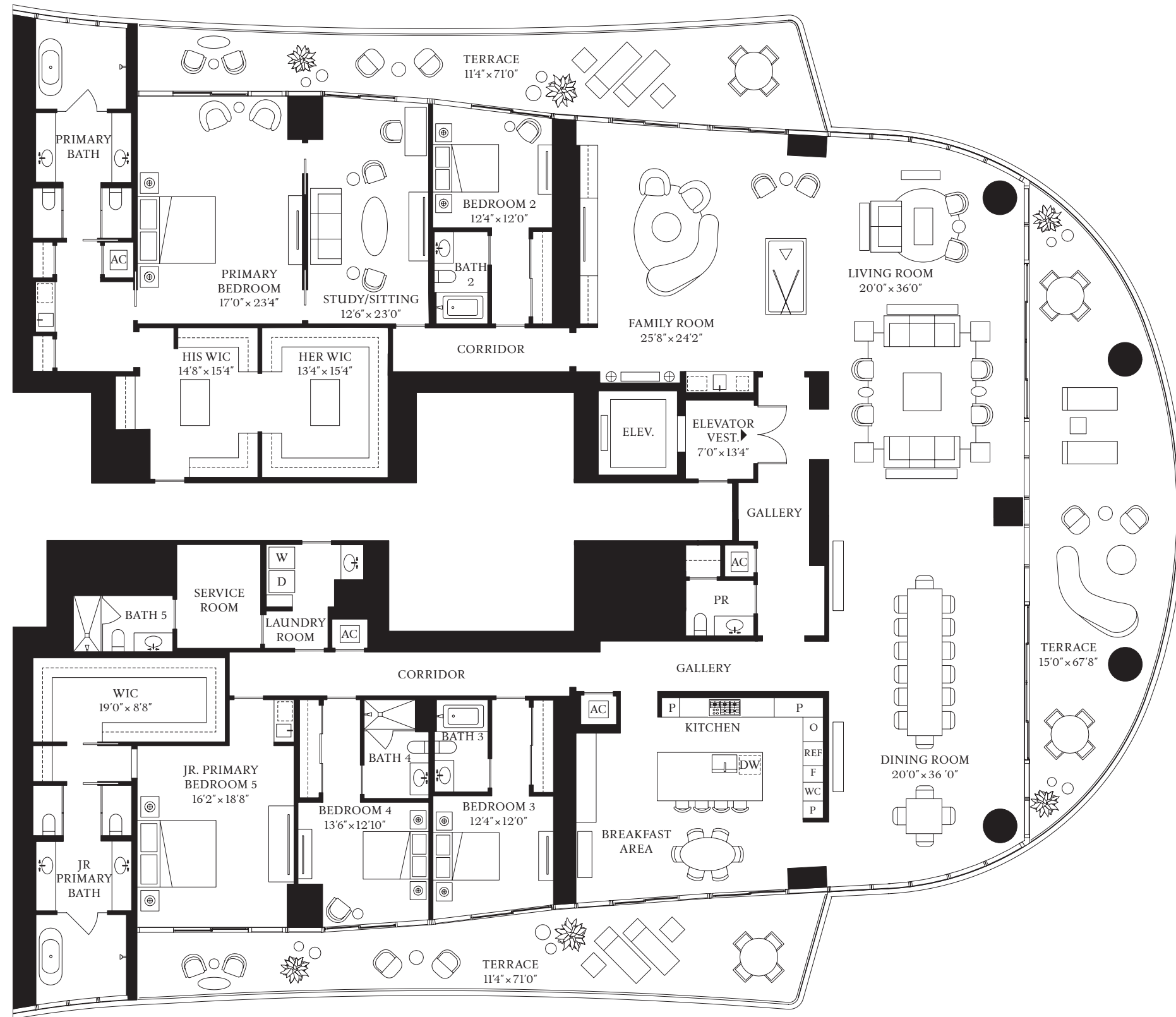
RESIDENCE

AB

FLOORS 7-18

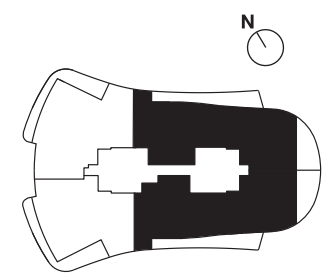
5 BEDROOMS
6 BATHROOMS
1 POWDER ROOM

INTERIOR
7,391 SF | 686.6 SQM
EXTERIOR
1,882 SF | 174.8 SQM



BISCAYNE BAY

BRICKELL AVE



The dimensions stated for this unit floor plan are approximate because there are various recognized methods for calculating the square footage of a unit. The square footage stated here is calculated from the exterior boundaries of the exterior walls to the centerline of interior demising walls without deductions for cutouts, curves, or architectural features. This method typically results in quoted dimensions greater than the dimensions that would be determined by using other accepted methods. The definition of "Unit" and the calculation method to be relied upon is set forth by the Developer in Developer's prospectus and the method set forth in the Developer's prospectus may result in a square footage calculation less than the method used here. Dimensions and unit configuration may change during construction. Consult the Developer's prospectus to understand what is offered with purchase, the calculation of the Unit square footage and dimensions. Prices are not based on the square footage no matter the method of calculation of unit dimensions and all prices are subject to change at any time. The project graphics, renderings, photographs, and text provided herein are copyrighted works owned by 1809 Brickell Property Owner, LLC 2022.



ST REGIS
MIAMI
THE RESIDENCES

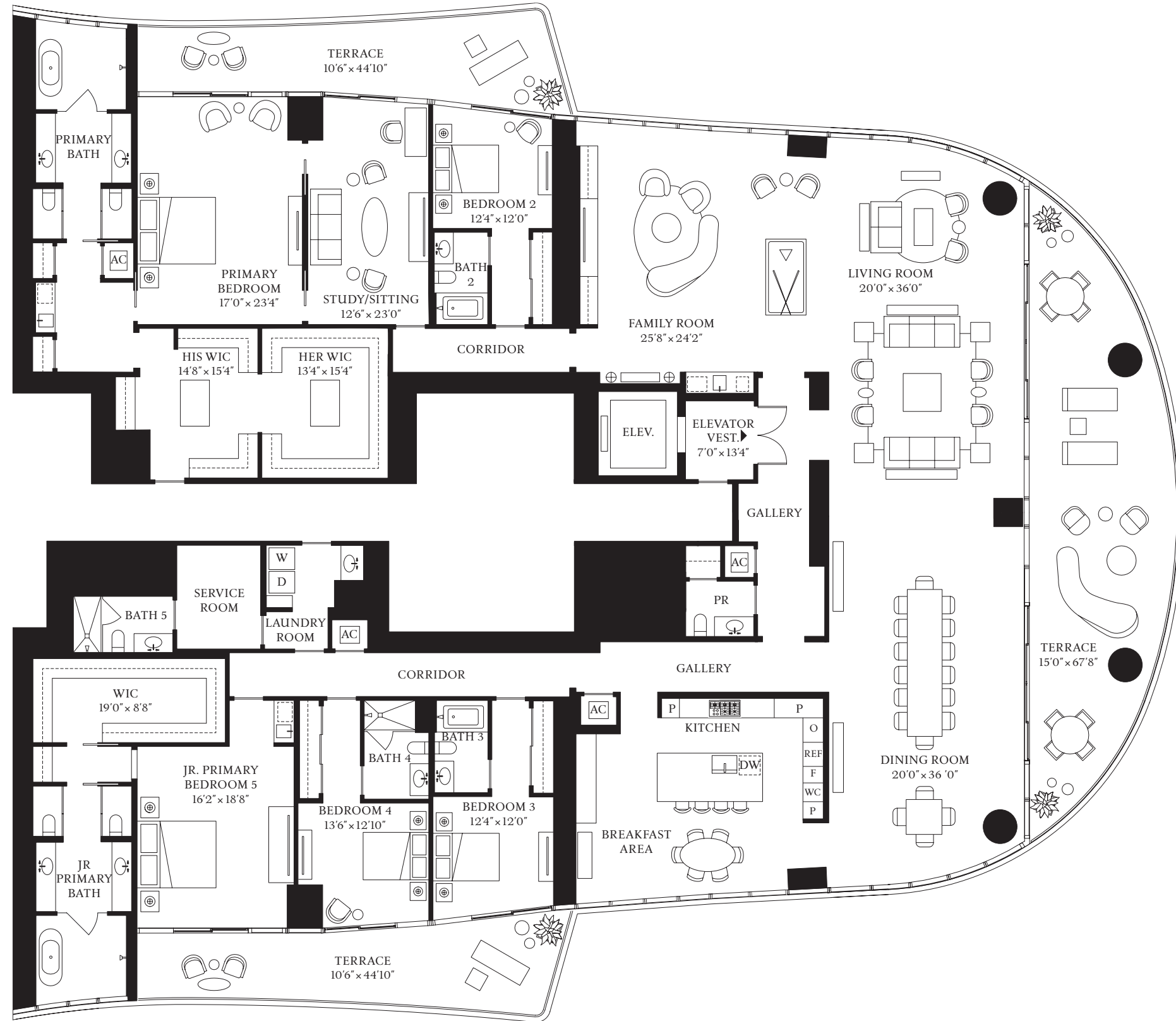
RESIDENCE

AB

FLOORS 21-30, 33-41

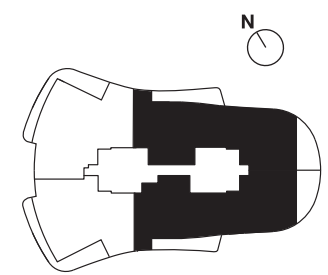
5 BEDROOMS
6 BATHROOMS
1 POWDER ROOM

INTERIOR
7,391 SF | 686.6 SQM
EXTERIOR
1,468 SF | 136.4 SQM

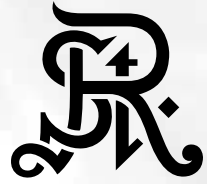


BISCAYNE BAY

BRICKELL AVE



The dimensions stated for this unit floor plan are approximate because there are various recognized methods for calculating the square footage of a unit. The square footage stated here is calculated from the exterior boundaries of the exterior walls to the centerline of interior demising walls without deductions for cutouts, curves, or architectural features. This method typically results in quoted dimensions greater than the dimensions that would be determined by using other accepted methods. The definition of "Unit" and the calculation method to be relied upon is set forth by the Developer in Developer's prospectus and the method set forth in the Developer's prospectus may result in a square footage calculation less than the method used here. Dimensions and unit configuration may change during construction. Consult the Developer's prospectus to understand what is offered with purchase, the calculation of the Unit square footage and dimensions. Prices are not based on the square footage no matter the method of calculation of unit dimensions and all prices are subject to change at any time. The project graphics, renderings, photographs, and text provided herein are copyrighted works owned by 1809 Brickell Property Owner, LLC 2022.



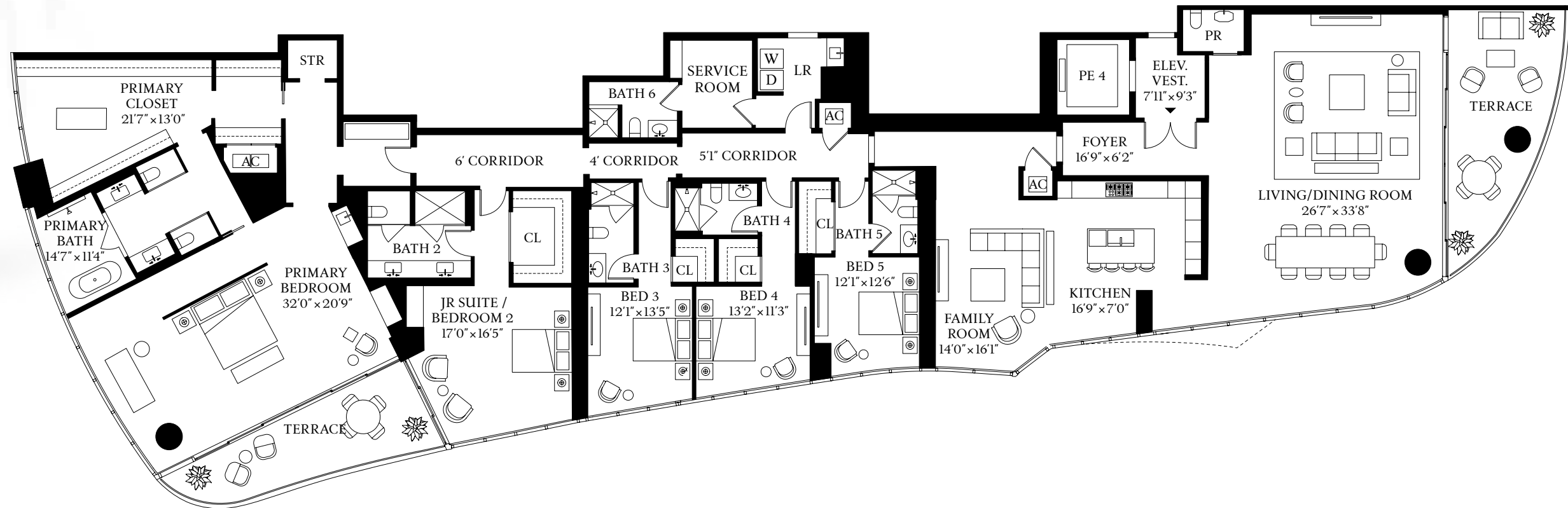
RESIDENCE

BD

EAST TOWER
5 BEDROOMS
6 BATHROOMS
1 POWDER ROOM

INTERIOR
5,765 SF | 535.6 SQM

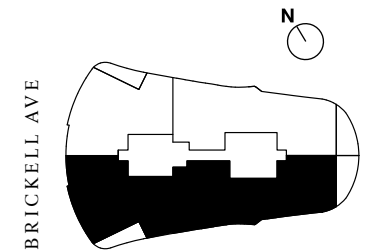
EXTERIOR
548 SF | 50.9 SQM



BISCAYNE BAY

ORAL REPRESENTATIONS CANNOT BE RELIED UPON AS CORRECTLY STATING REPRESENTATIONS OF THE DEVELOPER. FOR CORRECT REPRESENTATIONS, MAKE REFERENCE TO THIS BROCHURE AND THE DOCUMENTS REQUIRED BY SECTION 718.503, FLORIDA STATUTES, TO BE FURNISHED BY A DEVELOPER TO A BUYER OR LESSEE.

The St. Regis Residences, Miami East Tower a condominium within The St. Regis Residences, Miami (the "East" condominium) is developed by 1809 Brickell Property Owner, LLC whereas The St. Regis Residences, Miami West Tower (the "West" condominium) is developed by 1809 Brickell Phase II, LLC. The West is not available yet but will be soon. No specific view is guaranteed. The St. Regis Residences, Miami is not owned, developed, or sold by Marriott International, Inc. or its affiliates ("Marriott"), which has not confirmed the accuracy of any of the statements or representations made about the project by either developer. Pursuant to license agreements, each developer has a right to use the trade names, marks, and logos of Marriott's St Regis, The Related Group, and Integra Investments, LLC, each of which are licensors. Consult the respective developer's Prospectus for the proposed budget, terms, conditions, specifications, fees, and Unit dimensions.





ST REGIS
MIAMI
THE RESIDENCES

RESIDENCE

A

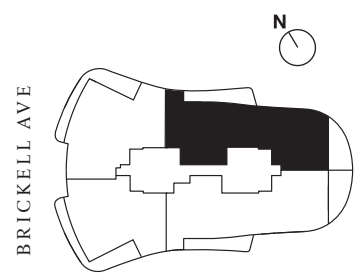
FLOORS 21-30, 33-41

4 BEDROOMS
5 BATHROOMS
1 POWDER ROOM

INTERIOR
3,712 SF | 344.9 SQM
EXTERIOR
734 SF | 68.2 SQM



BISCAYNE BAY



The dimensions stated for this unit floor plan are approximate because there are various recognized methods for calculating the square footage of a unit. The square footage stated here is calculated from the exterior boundaries of the exterior walls to the centerline of interior demising walls without deductions for cutouts, curves, or architectural features. This method typically results in quoted dimensions greater than the dimensions that would be determined by using other accepted methods. The definition of "Unit" and the calculation method to be relied upon is set forth by the Developer in Developer's prospectus and the method set forth in the Developer's prospectus may result in a square footage calculation less than the method used here. Dimensions and unit configuration may change during construction. Consult the Developer's prospectus to understand what is offered with purchase, the calculation of the Unit square footage and dimensions. Prices are not based on the square footage no matter the method of calculation of unit dimensions and all prices are subject to change at any time. The project graphics, renderings, photographs, and text provided herein are copyrighted works owned by 1809 Brickell Property Owner, LLC 2022.



ST REGIS
MIAMI
THE RESIDENCES

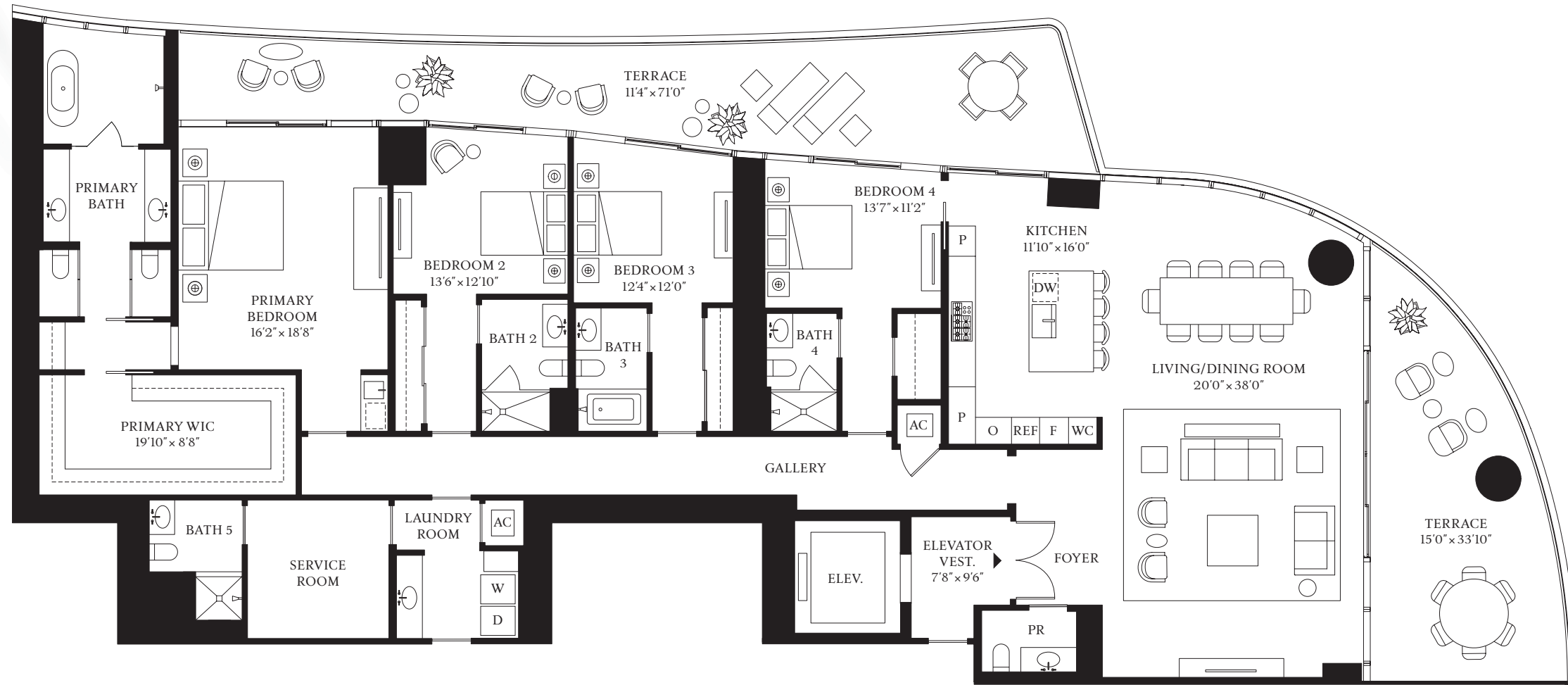
RESIDENCE

A

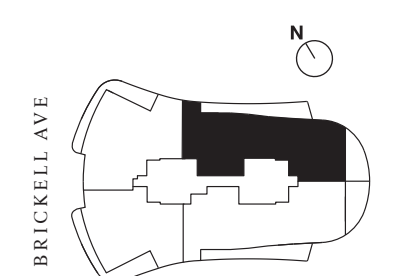
FLOORS 7-18

4 BEDROOMS
5 BATHROOMS
1 POWDER ROOM

INTERIOR
3,712 SF | 344.9 SQM
EXTERIOR
941 SF | 87.4 SQM



BISCAYNE BAY



BRICKELL AVE

The dimensions stated for this unit floor plan are approximate because there are various recognized methods for calculating the square footage of a unit. The square footage stated here is calculated from the exterior boundaries of the exterior walls to the centerline of interior demising walls without deductions for cutouts, curves, or architectural features. This method typically results in quoted dimensions greater than the dimensions that would be determined by using other accepted methods. The definition of "Unit" and the calculation method to be relied upon is set forth by the Developer in Developer's prospectus and the method set forth in the Developer's prospectus may result in a square footage calculation less than the method used here. Dimensions and unit configuration may change during construction. Consult the Developer's prospectus to understand what is offered with purchase, the calculation of the Unit square footage and dimensions. Prices are not based on the square footage no matter the method of calculation of unit dimensions and all prices are subject to change at any time. The project graphics, renderings, photographs, and text provided herein are copyrighted works owned by 1809 Brickell Property Owner, LLC 2022.



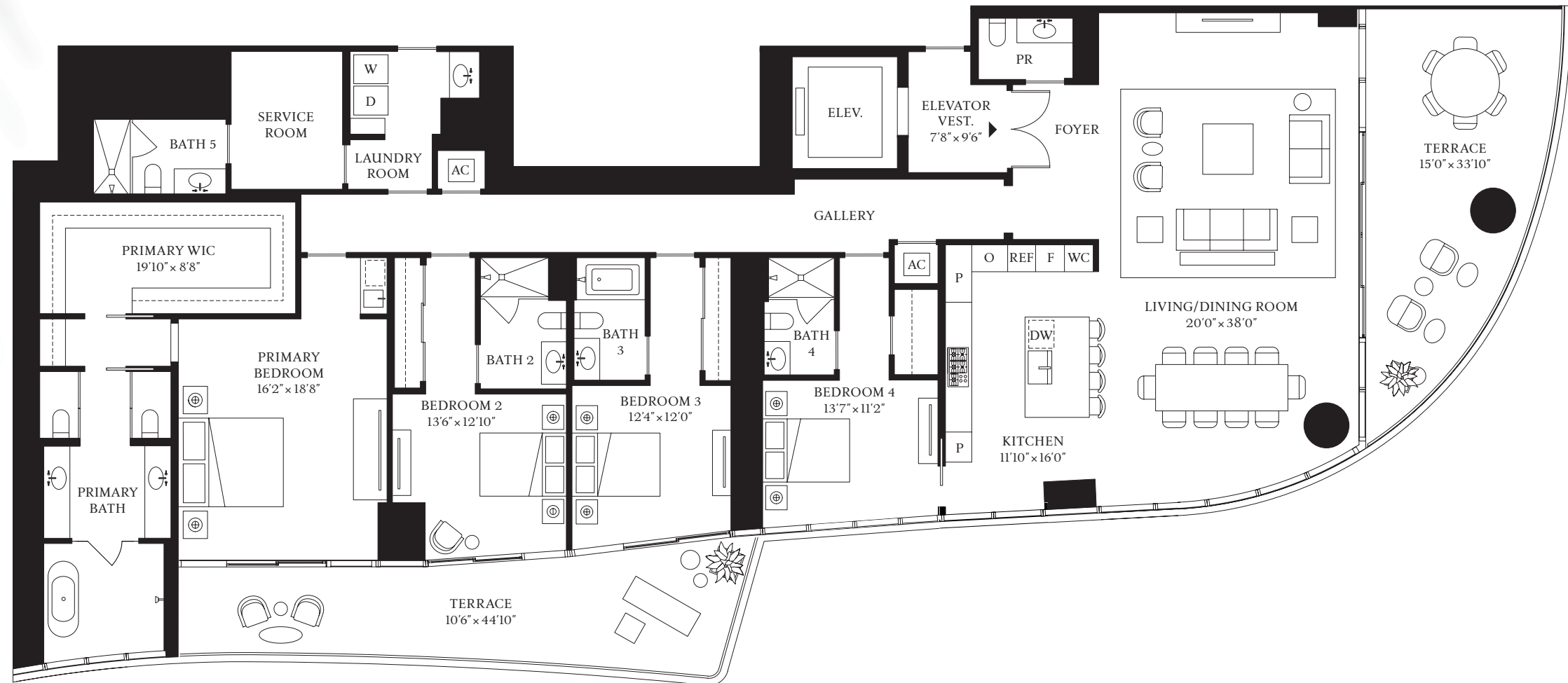
RESIDENCE

B

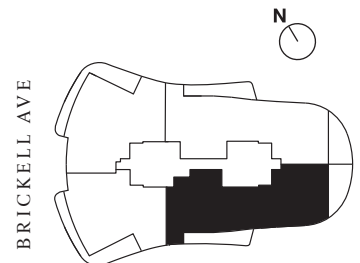
FLOORS 21-30, 33-41

4 BEDROOMS
5 BATHROOMS
1 POWDER ROOM

INTERIOR
3,679 SF | 341.8 SQM
EXTERIOR
734 SF | 68.2 SQM



BISCAYNE BAY



BRICKELL AVE

The dimensions stated for this unit floor plan are approximate because there are various recognized methods for calculating the square footage of a unit. The square footage stated here is calculated from the exterior boundaries of the exterior walls to the centerline of interior demising walls without deductions for cutouts, curves, or architectural features. This method typically results in quoted dimensions greater than the dimensions that would be determined by using other accepted methods. The definition of "Unit" and the calculation method to be relied upon is set forth by the Developer in Developer's prospectus and the method set forth in the Developer's prospectus may result in a square footage calculation less than the method used here. Dimensions and unit configuration may change during construction. Consult the Developer's prospectus to understand what is offered with purchase, the calculation of the Unit square footage and dimensions. Prices are not based on the square footage no matter the method of calculation of unit dimensions and all prices are subject to change at any time. The project graphics, renderings, photographs, and text provided herein are copyrighted works owned by 1809 Brickell Property Owner, LLC 2022.



ST REGIS
MIAMI
THE RESIDENCES

RESIDENCE

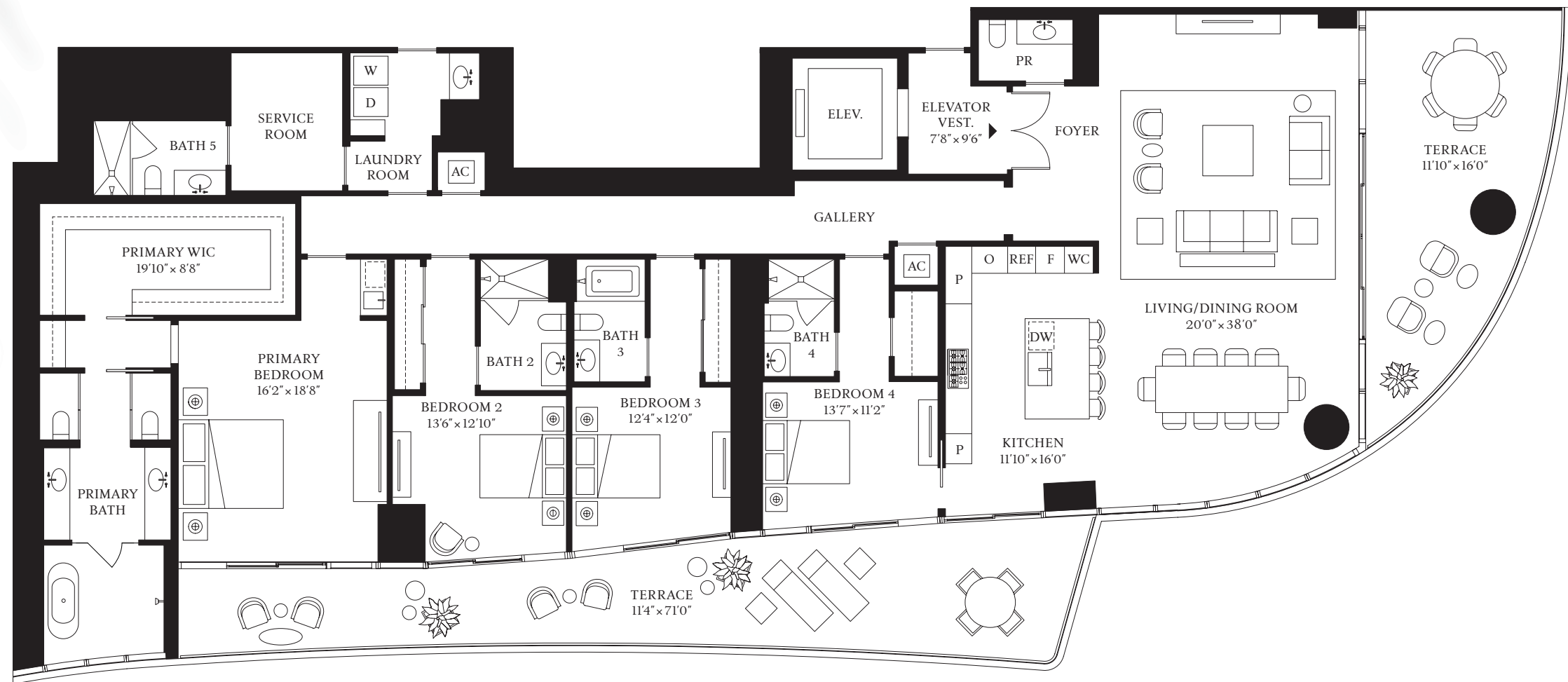
B

FLOORS 7-18

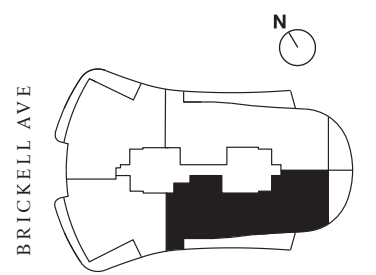
4 BEDROOMS
5 BATHROOMS
1 POWDER ROOM

INTERIOR
3,679 SF | 341.8 SQM

EXTERIOR
941 SF | 87.4 SQM



BISCAYNE BAY



The dimensions stated for this unit floor plan are approximate because there are various recognized methods for calculating the square footage of a unit. The square footage stated here is calculated from the exterior boundaries of the exterior walls to the centerline of interior demising walls without deductions for cutouts, curves, or architectural features. This method typically results in quoted dimensions greater than the dimensions that would be determined by using other accepted methods. The definition of "Unit" and the calculation method to be relied upon is set forth by the Developer in Developer's prospectus and the method set forth in the Developer's prospectus may result in a square footage calculation less than the method used here. Dimensions and unit configuration may change during construction. Consult the Developer's prospectus to understand what is offered with purchase, the calculation of the Unit square footage and dimensions. Prices are not based on the square footage no matter the method of calculation of unit dimensions and all prices are subject to change at any time. The project graphics, renderings, photographs, and text provided herein are copyrighted works owned by 1809 Brickell Property Owner, LLC 2022.



ST REGIS
MIAMI
THE RESIDENCES

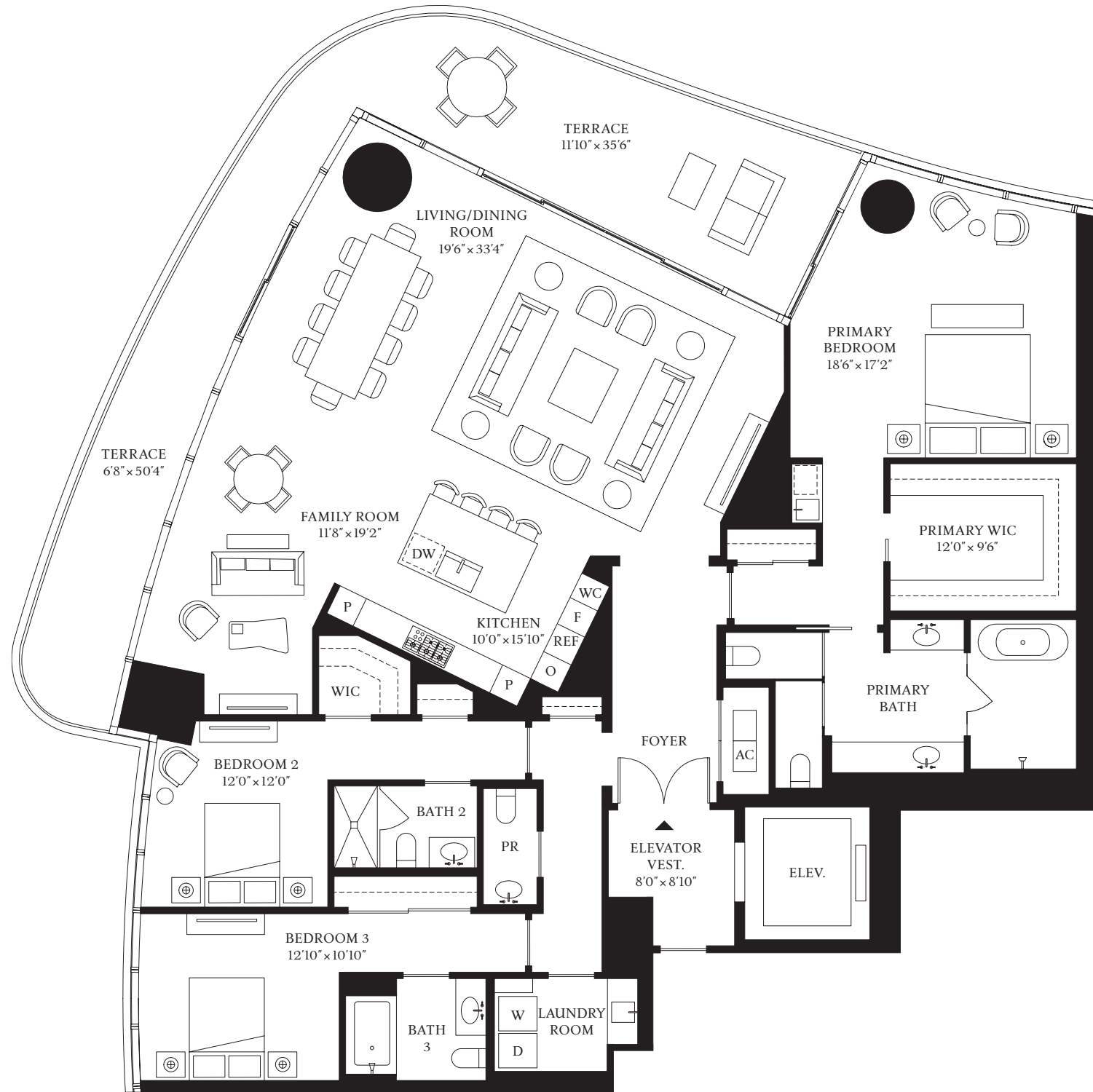
RESIDENCE

C

FLOORS 7-18, 21-30, 33-41

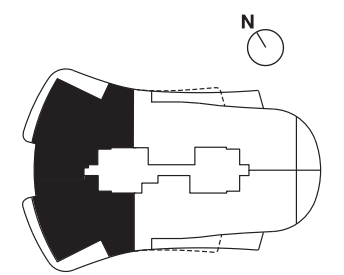
3 BEDROOMS
3 BATHROOMS
1 POWDER ROOM

INTERIOR
2,987 SF | 277.5 SQM
EXTERIOR
590 SF | 54.8 SQM



BISCAYNE BAY

BRICKELL AVE



The dimensions stated for this unit floor plan are approximate because there are various recognized methods for calculating the square footage of a unit. The square footage stated here is calculated from the exterior boundaries of the exterior walls to the centerline of interior demising walls without deductions for cutouts, curves, or architectural features. This method typically results in quoted dimensions greater than the dimensions that would be determined by using other accepted methods. The definition of "Unit" and the calculation method to be relied upon is set forth by the Developer in Developer's prospectus and the method set forth in the Developer's prospectus may result in a square footage calculation less than the method used here. Dimensions and unit configuration may change during construction. Consult the Developer's prospectus to understand what is offered with purchase, the calculation of the Unit square footage and dimensions. Prices are not based on the square footage no matter the method of calculation of unit dimensions and all prices are subject to change at any time. The project graphics, renderings, photographs, and text provided herein are copyrighted works owned by 1809 Brickell Property Owner, LLC 2022.



ST REGIS
MIAMI
THE RESIDENCES

RESIDENCE

D

FLOORS 7-18, 21-30, 33-41

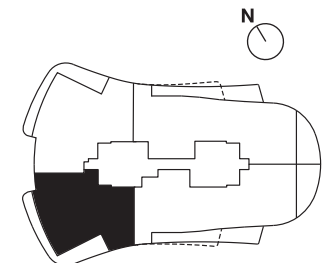
2 BEDROOMS
3 BATHROOMS
1 POWDER ROOM

INTERIOR
2,616 SF | 243 SQM
EXTERIOR
590 SF | 54.8 SQM



BISCAYNE BAY

BRICKELL AVE



The dimensions stated for this unit floor plan are approximate because there are various recognized methods for calculating the square footage of a unit. The square footage stated here is calculated from the exterior boundaries of the exterior walls to the centerline of interior demising walls without deductions for cutouts, curves, or architectural features. This method typically results in quoted dimensions greater than the dimensions that would be determined by using other accepted methods. The definition of "Unit" and the calculation method to be relied upon is set forth by the Developer in Developer's prospectus and the method set forth in the Developer's prospectus may result in a square footage calculation less than the method used here. Dimensions and unit configuration may change during construction. Consult the Developer's prospectus to understand what is offered with purchase, the calculation of the Unit square footage and dimensions. Prices are not based on the square footage no matter the method of calculation of unit dimensions and all prices are subject to change at any time. The project graphics, renderings, photographs, and text provided herein are copyrighted works owned by 1809 Brickell Property Owner, LLC 2022.



ST REGIS
MIAMI
THE RESIDENCES

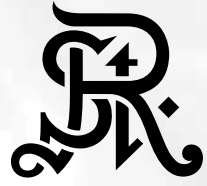
43C

Future residences located at
1809 Brickell Avenue
Miami, Florida 33129



THE ASTOR TOWER

3 BEDROOMS | 4 BATHROOMS | 1 POWDER ROOM
INTERIOR: 3,325 SF | 308.9 SQM EXTERIOR: 224 SF | 20.8 SQM



ST REGIS
MIAMI
THE RESIDENCES

RESIDENCE
43C

EAST TOWER
3 BEDROOMS
4 BATHROOMS
1 POWDER ROOM

INTERIOR
3,325 SF | 308.9 SQM
EXTERIOR
224 SF | 20.8 SQM

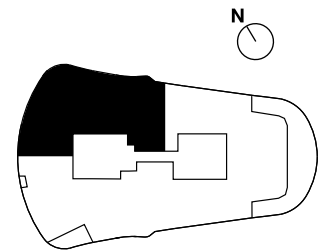


BISCAYNE BAY

ORAL REPRESENTATIONS CANNOT BE RELIED UPON AS CORRECTLY STATING REPRESENTATIONS OF THE DEVELOPER. FOR CORRECT REPRESENTATIONS, MAKE REFERENCE TO THIS BROCHURE AND THE DOCUMENTS REQUIRED BY SECTION 718.503, FLORIDA STATUTES, TO BE FURNISHED BY A DEVELOPER TO A BUYER OR LESSEE.

The St. Regis Residences, Miami East Tower a condominium within The St. Regis Residences, Miami (the "East" condominium) is developed by 1809 Brickell Property Owner, LLC whereas The St. Regis Residences, Miami West Tower (the "West" condominium) is developed by 1809 Brickell Phase II, LLC. The West is not available yet but will be soon. No specific view is guaranteed. The St. Regis Residences, Miami is not owned, developed, or sold by Marriott International, Inc. or its affiliates ("Marriott"), which has not confirmed the accuracy of any of the statements or representations made about the project by either developer. Pursuant to license agreements, each developer has a right to use the trade names, marks, and logos of Marriott's St Regis, The Related Group, and Integra Investments, LLC, each of which are licensors. Consult the respective developer's Prospectus for the proposed budget, terms, conditions, specifications, fees, and Unit dimensions.

BRICKELL AVE





ST REGIS
MIAMI
THE RESIDENCES

43D

Future residences located at
1809 Brickell Avenue
Miami, Florida 33129



THE ASTOR TOWER

3 BEDROOMS | 3 BATHROOMS | 1 POWDER ROOM
INTERIOR: 3,294 SF | 306.0 SQM EXTERIOR: 224 SF | 20.8 SQM



ST REGIS
MIAMI
THE RESIDENCES

RESIDENCE
43D

EAST TOWER
3 BEDROOMS
3 BATHROOMS
1 POWDER ROOM

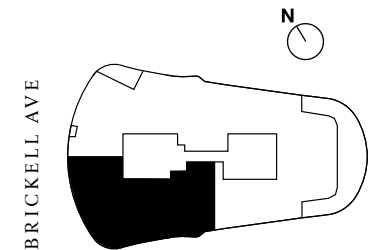
INTERIOR
3,294 SF | 306.0 SQM
EXTERIOR
224 SF | 20.8 SQM



BISCAYNE BAY

ORAL REPRESENTATIONS CANNOT BE RELIED UPON AS CORRECTLY STATING REPRESENTATIONS OF THE DEVELOPER. FOR CORRECT REPRESENTATIONS, MAKE REFERENCE TO THIS BROCHURE AND THE DOCUMENTS REQUIRED BY SECTION 718.503, FLORIDA STATUTES, TO BE FURNISHED BY A DEVELOPER TO A BUYER OR LESSEE.

The St. Regis Residences, Miami East Tower a condominium within The St. Regis Residences, Miami (the "East" condominium) is developed by 1809 Brickell Property Owner, LLC whereas The St. Regis Residences, Miami West Tower (the "West" condominium) is developed by 1809 Brickell Phase II, LLC. The West is not available yet but will be soon. No specific view is guaranteed. The St. Regis Residences, Miami is not owned, developed, or sold by Marriott International, Inc. or its affiliates ("Marriott"), which has not confirmed the accuracy of any of the statements or representations made about the project by either developer. Pursuant to license agreements, each developer has a right to use the trade names, marks, and logos of Marriott's St Regis, The Related Group, and Integra Investments, LLC, each of which are licensors. Consult the respective developer's Prospectus for the proposed budget, terms, conditions, specifications, fees, and Unit dimensions.





ST REGIS
MIAMI
THE RESIDENCES

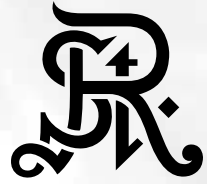
45A

Future residences located at
1809 Brickell Avenue
Miami, Florida 33129



THE ASTOR TOWER

5 BEDROOMS | 5 BATHROOMS | 1 POWDER ROOM
INTERIOR: 5,013 SF | 465.7 SQM EXTERIOR: 1,325 SF | 123.1 SQM



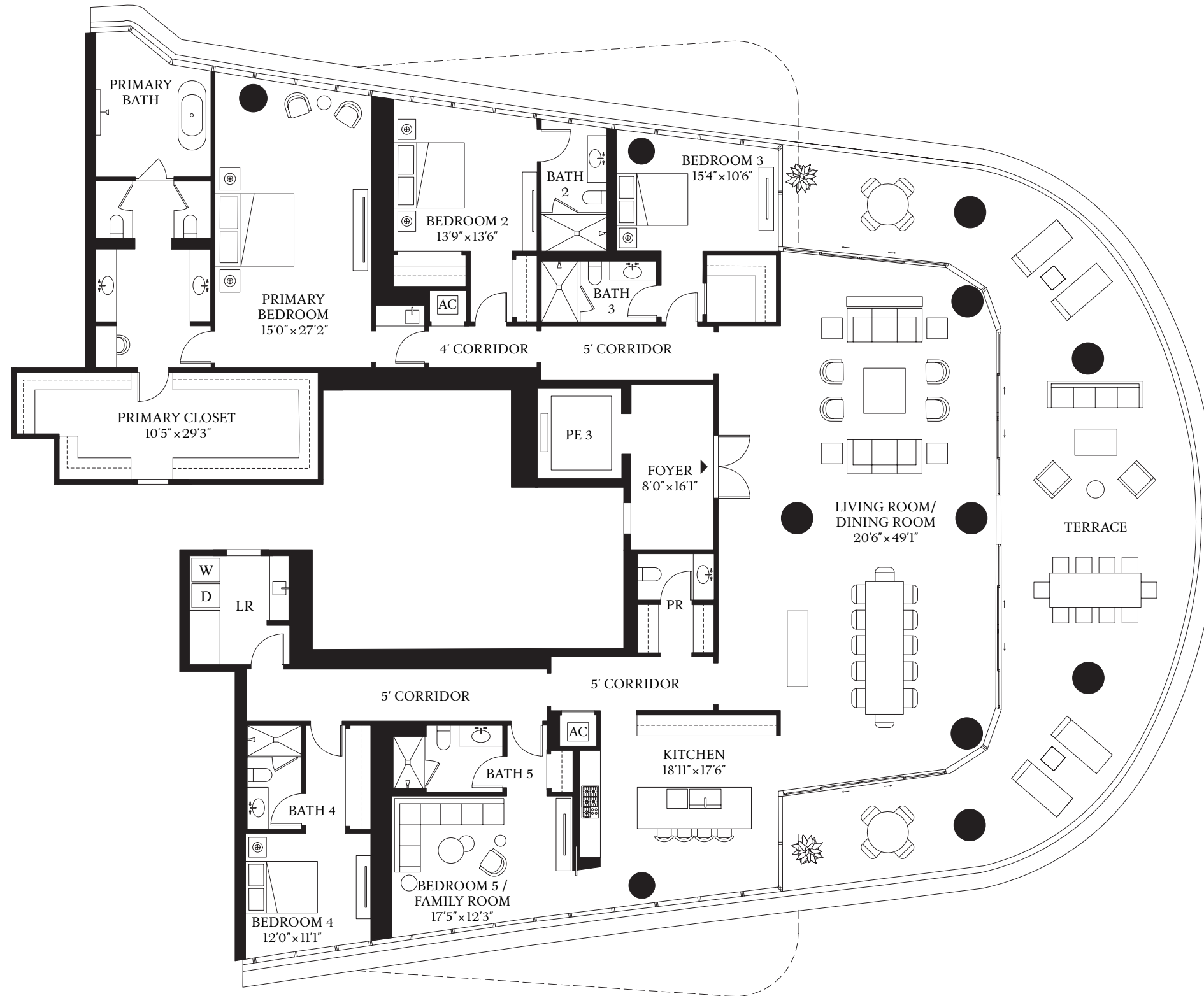
ST REGIS
MIAMI
THE RESIDENCES

RESIDENCE

45A

EAST TOWER
5 BEDROOMS
5 BATHROOMS
1 POWDER ROOM

INTERIOR
5,013 SF | 465.7 SQM
EXTERIOR
1,325 SF | 123.1 SQM

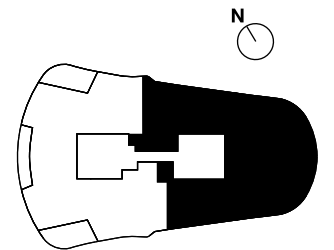


BISCAYNE BAY

ORAL REPRESENTATIONS CANNOT BE RELIED UPON AS CORRECTLY STATING REPRESENTATIONS OF THE DEVELOPER. FOR CORRECT REPRESENTATIONS, MAKE REFERENCE TO THIS BROCHURE AND THE DOCUMENTS REQUIRED BY SECTION 718.503, FLORIDA STATUTES, TO BE FURNISHED BY A DEVELOPER TO A BUYER OR LESSEE.

The St. Regis Residences, Miami East Tower a condominium within The St. Regis Residences, Miami (the "East" condominium) is developed by 1809 Brickell Property Owner, LLC whereas The St. Regis Residences, Miami West Tower (the "West" condominium) is developed by 1809 Brickell Phase II, LLC. The West is not available yet but will be soon. No specific view is guaranteed. The St. Regis Residences, Miami is not owned, developed, or sold by Marriott International, Inc. or its affiliates ("Marriott"), which has not confirmed the accuracy of any of the statements or representations made about the project by either developer. Pursuant to license agreements, each developer has a right to use the trade names, marks, and logos of Marriott's St Regis, The Related Group, and Integra Investments, LLC, each of which are licensors. Consult the respective developer's Prospectus for the proposed budget, terms, conditions, specifications, fees, and Unit dimensions.

BRICKELL AVE





ST REGIS
MIAMI
THE RESIDENCES

45C

Future residences located at
1809 Brickell Avenue
Miami, Florida 33129

 **RELATED**  **INTEGRA**
ONE | Sotheby's
INTERNATIONAL REALTY

THE ASTOR TOWER

2 BEDROOMS | 2 BATHROOMS | 1 POWDER ROOM
INTERIOR: 2,656 SF | 246.8 SQM EXTERIOR: 224 SF | 20.8 SQM



ST REGIS
MIAMI
THE RESIDENCES

RESIDENCE
45C

EAST TOWER
2 BEDROOMS
2 BATHROOMS
1 POWDER ROOM

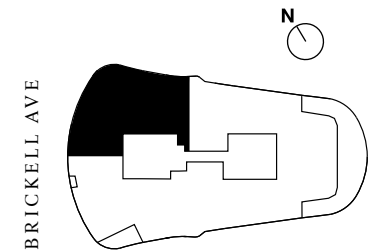
INTERIOR
2,656 SF | 246.8 SQM
EXTERIOR
224 SF | 20.8 SQM



BISCAYNE BAY

ORAL REPRESENTATIONS CANNOT BE RELIED UPON AS CORRECTLY STATING REPRESENTATIONS OF THE DEVELOPER. FOR CORRECT REPRESENTATIONS, MAKE REFERENCE TO THIS BROCHURE AND THE DOCUMENTS REQUIRED BY SECTION 718.503, FLORIDA STATUTES, TO BE FURNISHED BY A DEVELOPER TO A BUYER OR LESSEE.

The St. Regis Residences, Miami East Tower a condominium within The St. Regis Residences, Miami (the "East" condominium) is developed by 1809 Brickell Property Owner, LLC whereas The St. Regis Residences, Miami West Tower (the "West" condominium) is developed by 1809 Brickell Phase II, LLC. The West is not available yet but will be soon. No specific view is guaranteed. The St. Regis Residences, Miami is not owned, developed, or sold by Marriott International, Inc. or its affiliates ("Marriott"), which has not confirmed the accuracy of any of the statements or representations made about the project by either developer. Pursuant to license agreements, each developer has a right to use the trade names, marks, and logos of Marriott's St Regis, The Related Group, and Integra Investments, LLC, each of which are licensors. Consult the respective developer's Prospectus for the proposed budget, terms, conditions, specifications, fees, and Unit dimensions.



BRICKELL AVE