

RESIDENCES

PIER SIXTY-SIX

CONDO RESIDENCES

A

3 BEDROOMS
3.5 BATHROOMS

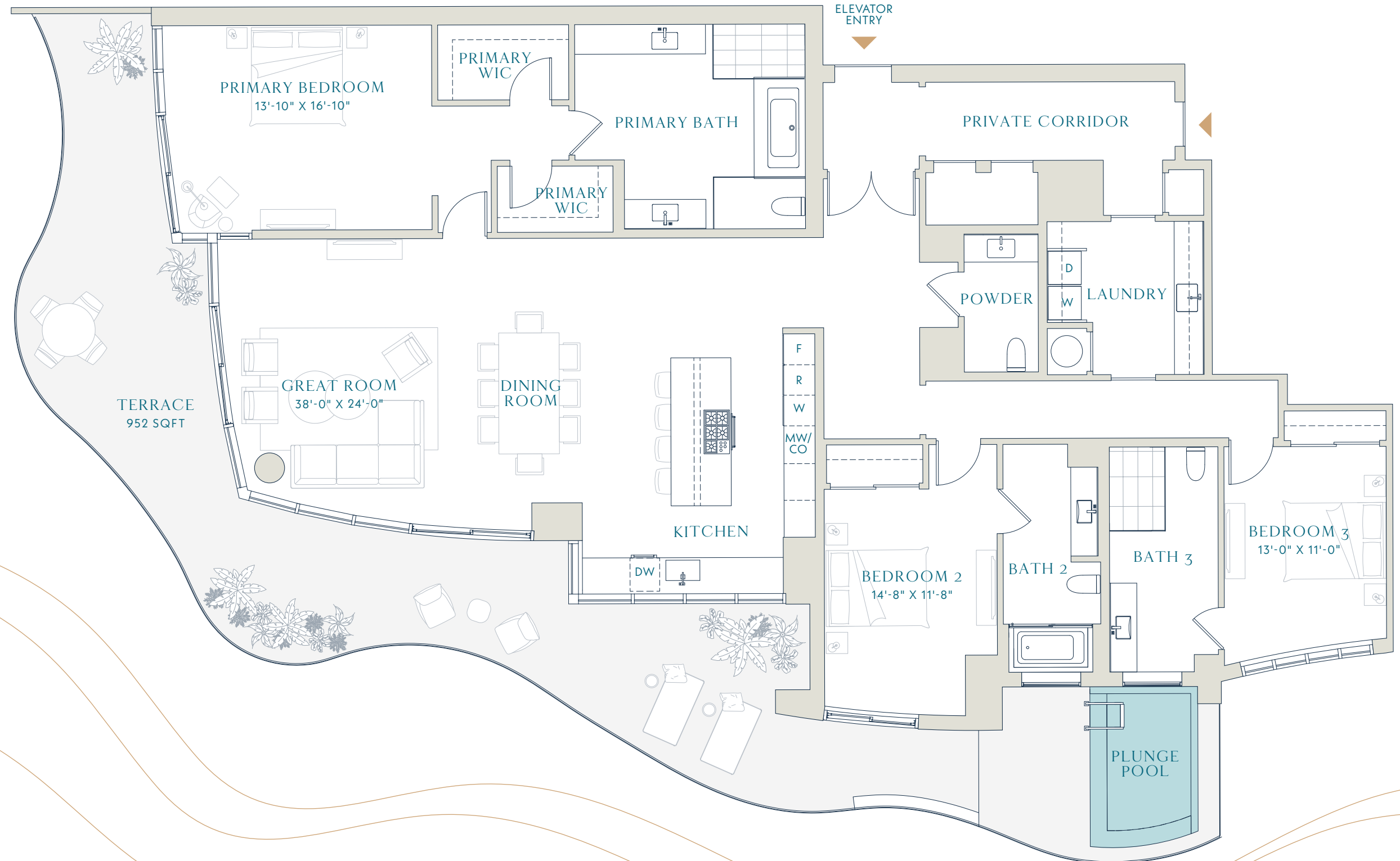
Interior
2,878 SQFT
267.4 SM

Terrace
952 SQFT
88.4 SM

Total
3,830 SQFT
355.8 SM



CONDO RESIDENCES



PIER SIXTY-SIX
PierSixtySixResidences.com

Stated dimensions are measured to the exterior boundaries of the exterior walls and the centerline of interior demising walls (without deductions for interior columns, shear walls or shafts) and in fact vary from the dimensions that would be determined by using the description and definition of the "Unit" set forth in the Declaration (which generally only includes the interior airspace between the perimeter walls and excludes interior structural components, shear walls and shafts). For the calculation of the unit area following the definition of the unit set forth in the Declaration, see Exhibit "3" of the Declaration. Additionally, measurements of rooms set forth on any floor plan are generally taken at the greatest points of each given room (as if the room were a perfect rectangle), without regard for any cutouts. Accordingly, the area of the actual room will typically be smaller than the product obtained by multiplying the stated length times width. All dimensions are approximate, and all floor plans and development plans are subject to change. Brand and Marketing by Williams New York.

RESIDENCES

PIER SIXTY-SIX

CONDO RESIDENCES

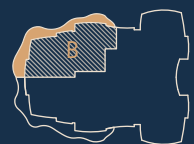
B

3 BEDROOMS
3.5 BATHROOMS

Interior
2,878 SQFT
267.4 SM

Terrace
980 SQFT
91 SM

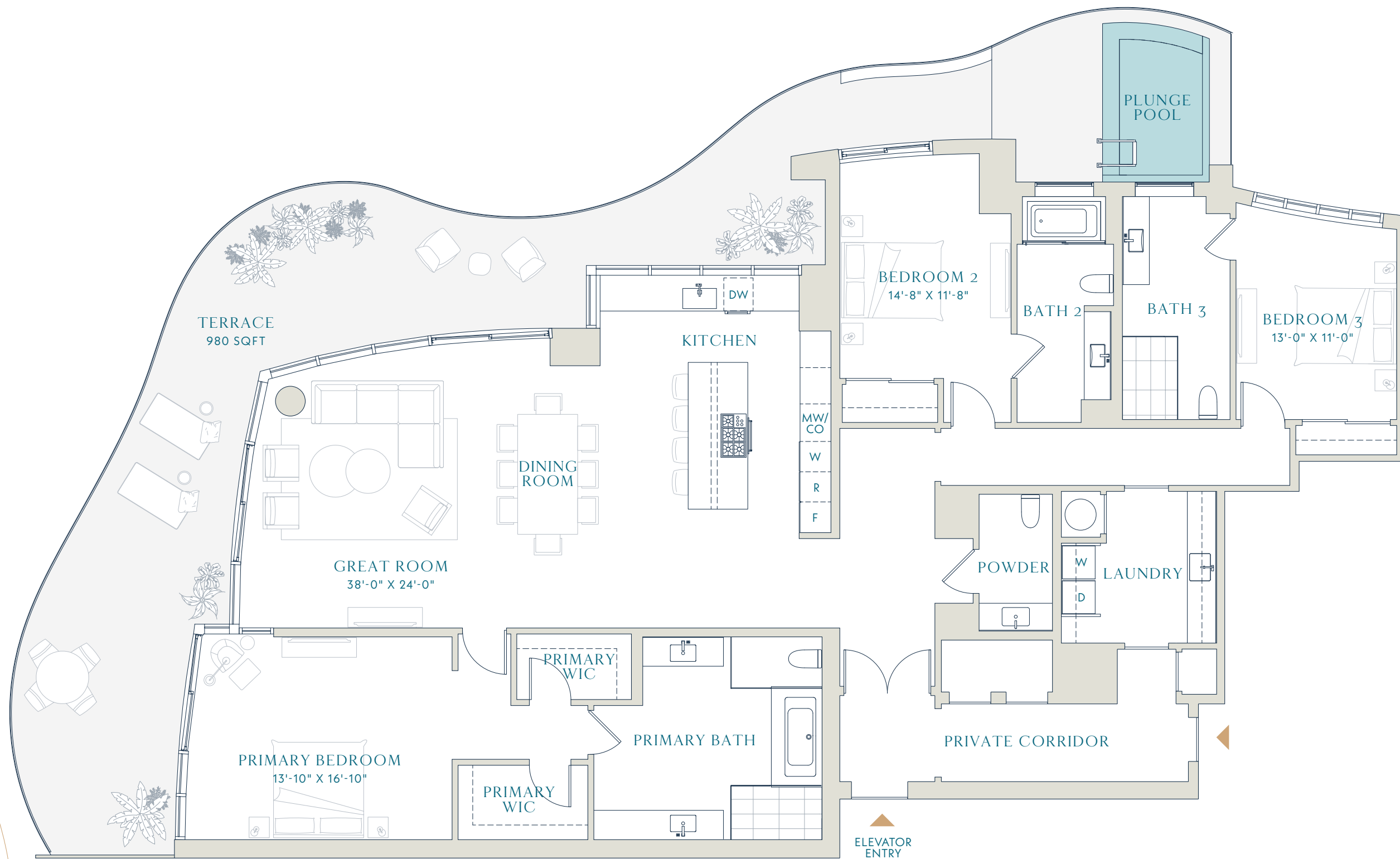
Total
3,858 SQFT
358.4 SM



CONDO RESIDENCES

PIER SIXTY-SIX
PierSixtySixResidences.com

WATER VIEW



Stated dimensions are measured to the exterior boundaries of the exterior walls and the centerline of interior demising walls (without deductions for interior columns, shear walls or shafts) and in fact vary from the dimensions that would be determined by using the description and definition of the "Unit" set forth in the Declaration (which generally only includes the interior airspace between the perimeter walls and excludes interior structural components, shear walls and shafts). For the calculation of the unit area following the definition of the unit set forth in the Declaration, see Exhibit "3" of the Declaration. Additionally, measurements of rooms set forth on any floor plan are generally taken at the greatest points of each given room (as if the room were a perfect rectangle), without regard for any cutouts. Accordingly, the area of the actual room will typically be smaller than the product obtained by multiplying the stated length times width. All dimensions are approximate, and all floor plans and development plans are subject to change. Brand and Marketing by Williams New York.

RESIDENCES

PIER SIXTY-SIX

WATER VIEW

RESORT RESIDENCES

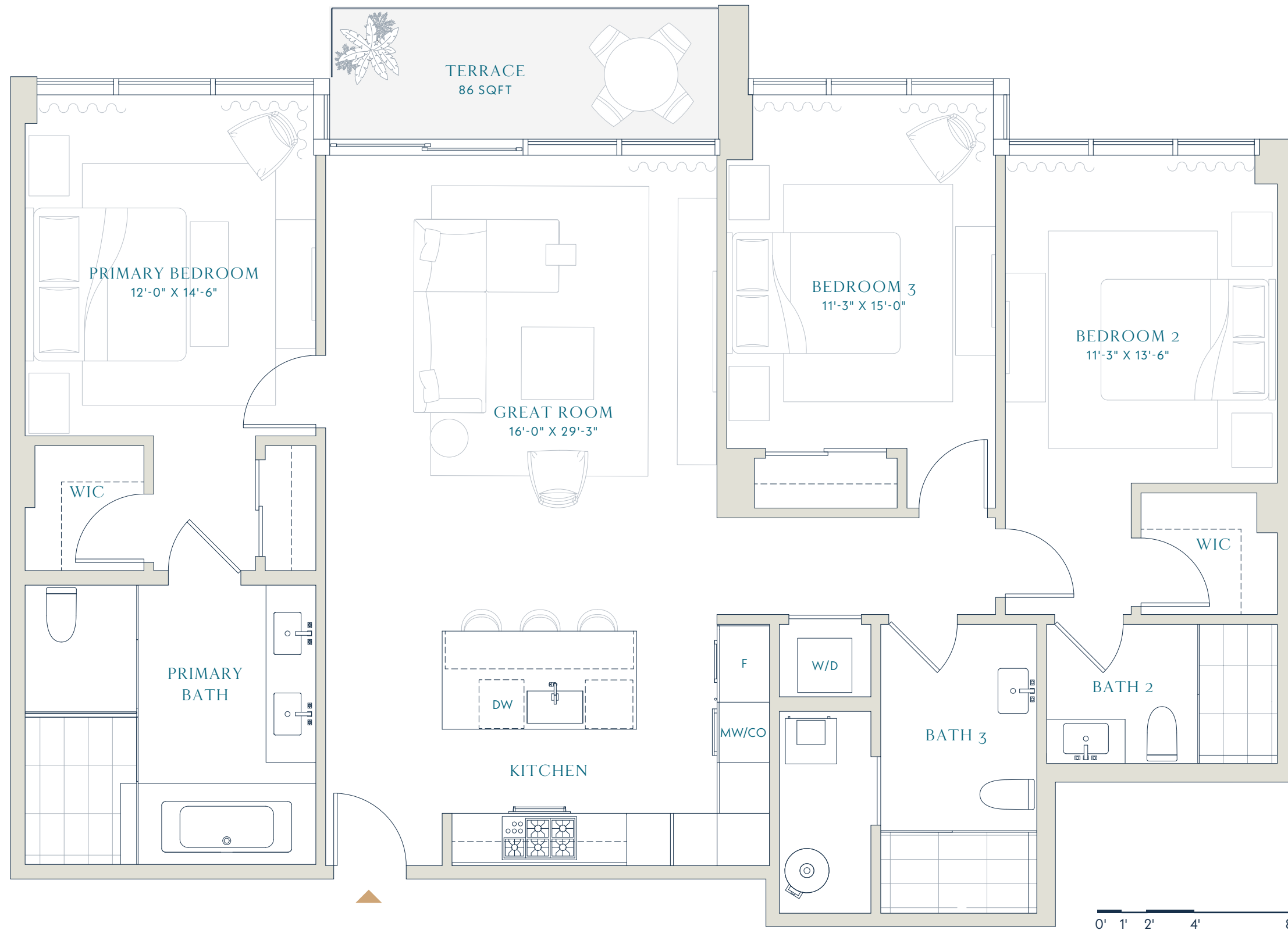
C

3 BEDROOMS
3 BATHROOMS

Interior
1,645 SQFT
152.8 SM

Terrace
86 SQFT
8.0 SM

Total
1,731 SQFT
160.8 SM



Stated dimensions are measured to the exterior boundaries of the exterior walls and the centerline of interior demising walls (without deductions for interior columns, shear walls or shafts) and in fact vary from the dimensions that would be determined by using the description and definition of the "Unit" set forth in the Declaration (which generally only includes the interior airspace between the perimeter walls and excludes interior structural components, shear walls and shafts). For the calculation of the unit area following the definition of the unit set forth in the Declaration, see Exhibit "3" of the Declaration. Additionally, measurements of rooms set forth on any floor plan are generally taken at the greatest points of each given room (as if the room were a perfect rectangle), without regard for any cutouts. Accordingly, the area of the actual room will typically be smaller than the product obtained by multiplying the stated length times width. All dimensions are approximate, and all floor plans and development plans are subject to change. Brand and Marketing by Williams New York.

RESIDENCES

PIER SIXTY-SIX

CONDO RESIDENCES

C

3 BEDROOMS
3.5 BATHROOMS

Interior
2,718 SQFT
252.5 SM

Terrace
917 SQFT
85.2 SM

Total
3,635 SQFT
337.7 SM



CONDO RESIDENCES

PIER SIXTY-SIX
PierSixtySixResidences.com



Stated dimensions are measured to the exterior boundaries of the exterior walls and the centerline of interior demising walls (without deductions for interior columns, shear walls or shafts) and in fact vary from the dimensions that would be determined by using the description and definition of the "Unit" set forth in the Declaration (which generally only includes the interior airspace between the perimeter walls and excludes interior structural components, shear walls and shafts). For the calculation of the unit area following the definition of the unit set forth in the Declaration, see Exhibit "3" of the Declaration. Additionally, measurements of rooms set forth on any floor plan are generally taken at the greatest points of each given room (as if the room were a perfect rectangle), without regard for any cutouts. Accordingly, the area of the actual room will typically be smaller than the product obtained by multiplying the stated length times width. All dimensions are approximate, and all floor plans and development plans are subject to change. Brand and Marketing by Williams New York.

RESIDENCES

PIER SIXTY-SIX

RESORT RESIDENCES

D

2 BEDROOMS
FAMILY ROOM
3 BATHROOMS

Interior

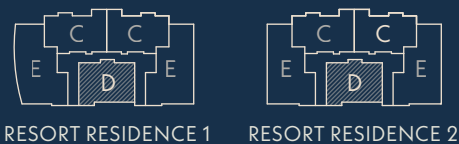
1,738 SQFT
161.5 SM

Terrace

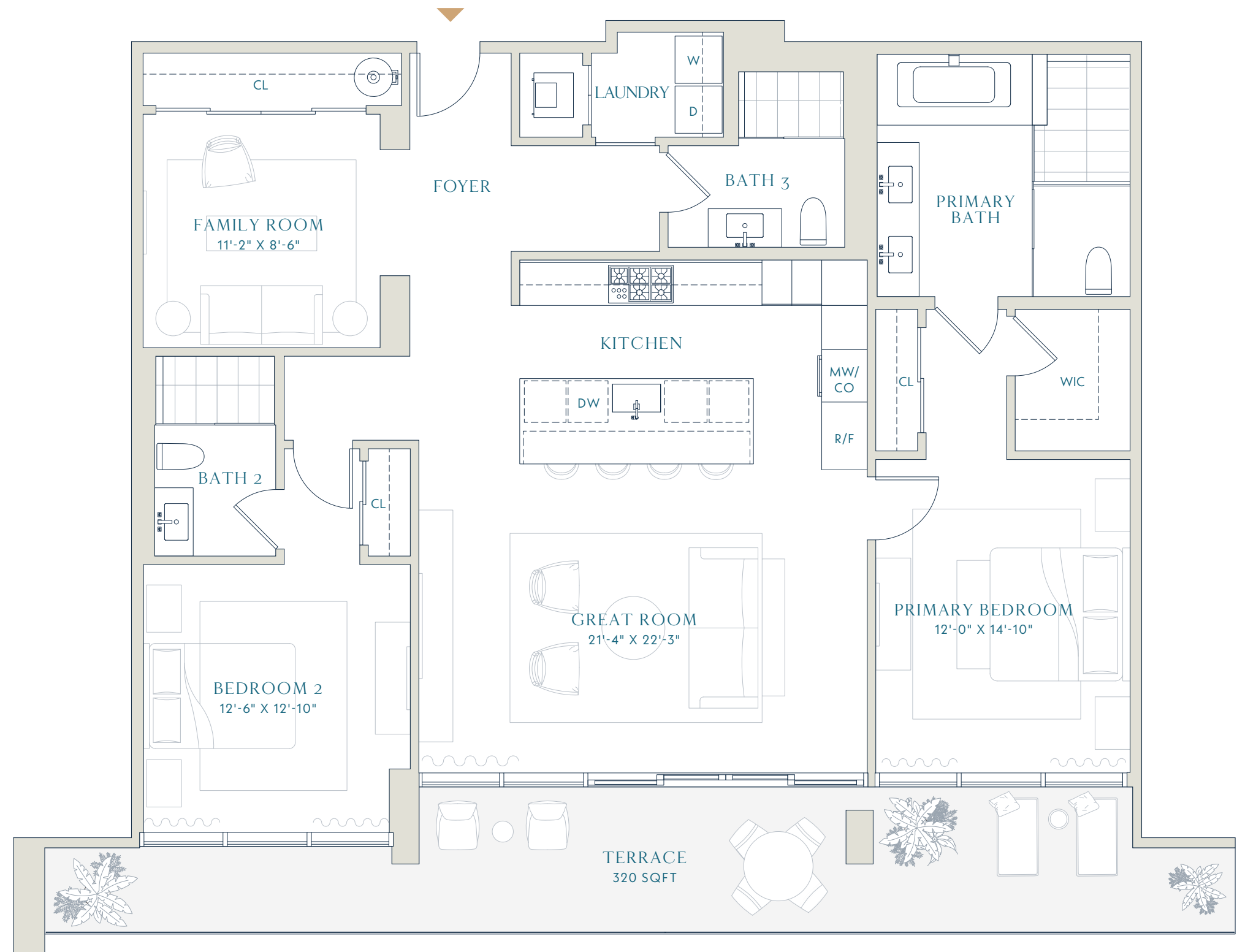
320 SQFT
29.7 SM

Total

2,058 SQFT
191.2 SM



PIER SIXTY-SIX
PierSixtySixResidences.com



Stated dimensions are measured to the exterior boundaries of the exterior walls and the centerline of interior demising walls (without deductions for interior columns, shear walls or shafts) and in fact vary from the dimensions that would be determined by using the description and definition of the "Unit" set forth in the Declaration (which generally only includes the interior airspace between the perimeter walls and excludes interior structural components, shear walls and shafts). For the calculation of the unit area following the definition of the unit set forth in the Declaration, see Exhibit "3" of the Declaration. Additionally, measurements of rooms set forth on any floor plan are generally taken at the greatest points of each given room (as if the room were a perfect rectangle), without regard for any cutouts. Accordingly, the area of the actual room will typically be smaller than the product obtained by multiplying the stated length times width. All dimensions are approximate, and all floor plans and development plans are subject to change. Brand and Marketing by Williams New York.

RESIDENCES

PIER SIXTY-SIX

RESORT RESIDENCES

E ALT

3 BEDROOMS
3.5 BATHROOMS

Interior
2,205 SQFT
204.9 SM

Terrace
828 SQFT
77.0 SM

Total
3,033 SQFT
281.8 SM

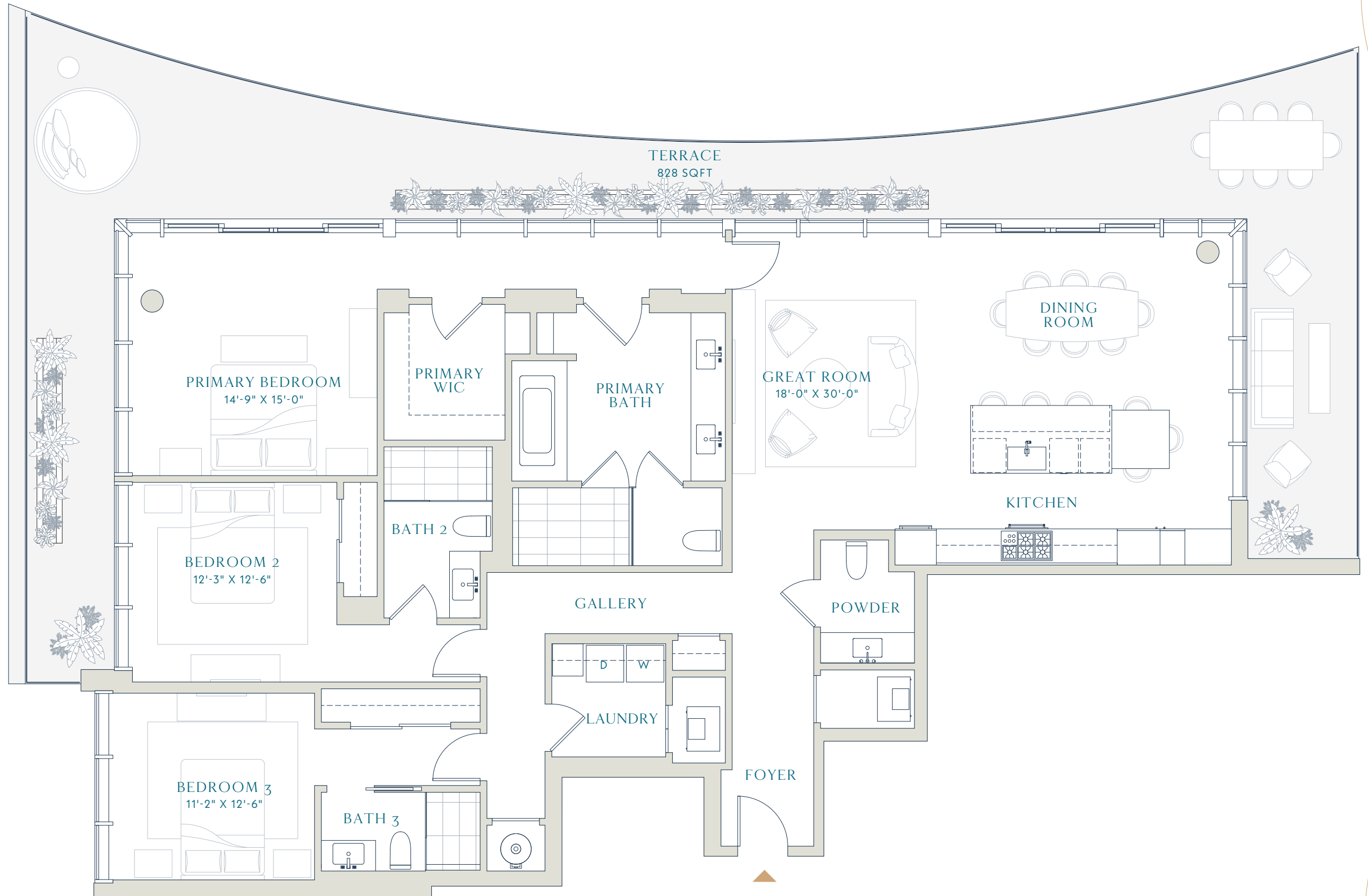


RESORT RESIDENCE 1



RESORT RESIDENCE 2

PIER SIXTY-SIX
PierSixtySixResidences.com



Stated dimensions are measured to the exterior boundaries of the exterior walls and the centerline of interior demising walls (without deductions for interior columns, shear walls or shafts) and in fact vary from the dimensions that would be determined by using the description and definition of the "Unit" set forth in the Declaration (which generally only includes the interior airspace between the perimeter walls and excludes interior structural components, shear walls and shafts). For the calculation of the unit area following the definition of the unit set forth in the Declaration, see Exhibit "3" of the Declaration. Additionally, measurements of rooms set forth on any floor plan are generally taken at the greatest points of each given room (as if the room were a perfect rectangle), without regard for any cutouts. Accordingly, the area of the actual room will typically be smaller than the product obtained by multiplying the stated length times width. All dimensions are approximate, and all floor plans and development plans are subject to change. Brand and Marketing by Williams New York.