

TAL



AVENTURA



REVEL IN AVENTURA'S
NEWEST ICON.



TA

THE BUILDING





ELEVATED LIVING IN THE HEART OF AVENTURA



TA

LOCATION



Discover Aventura



- TAL Aventura
 - Apple Flagship Store
 - Asiatiko
 - Aventura Charter Schools
 - Aventura Mall
 - Bal Harbour Shops
 - Brightline Aventura Station
 - Don Soffer High School
 - Edmond J Safra Synagogue
 - Fresh Market
 - Fort Lauderdale Airport
 - Gulfstream Park Racing
 - Hardrock Stadium
 - JW Marriott
 - Lincoln Road
 - Lubavitch Aventura South
 - Miami International Airport
 - Oleta River State Park
 - Opa Locka Executive Airport
 - Tidal Cove Water Park
 - Turnberry Marina
 - Turnberry Isle Country Club
 - Whole Foods
 - Williams Island
- Aventura Mall
 - Bal Harbor Beach
 - East Greynolds Park
 - Founders Park
 - Golden Beach
 - Greynolds Park
 - Haulover Beach
 - Haulover Kite Park
 - Highland Oaks Park
 - Hi-Lift Marina
 - Loggia Beach Park
 - Mo's Bagels
 - Newport Fishing Pier
 - Pubbelly Sushi
 - Sandy Beach
 - Sunny Isles Beach
 - Waterways Dog Park
 - Williams Island Marina



LIFESTYLE





PRIVATE PORTE COCHÈRE ARRIVAL



RESIDENTS LOBBY



RESIDENTS CO-WORKING LOUNGE AND COFFEE BAR



5TH FLOOR CLUBHOUSE LOUNGE



OUTDOOR LOUNGE WITH GRILL AND KITCHENETTE



5TH FLOOR CLUBHOUSE GAME LOUNGE



OUTDOOR AMENITIES & MINI-GOLF





PRIVATE FITNESS CENTER



SWIMMING POOL



PLAYGROUND AND BASKETBALL/PICKLEBALL COURT



INTERIORS













MASTER BATHROOM WITH FREE STANDING TUB





MASTER BATHROOM WITH FREE STANDING TUB







TAL

FLOOR PLANS

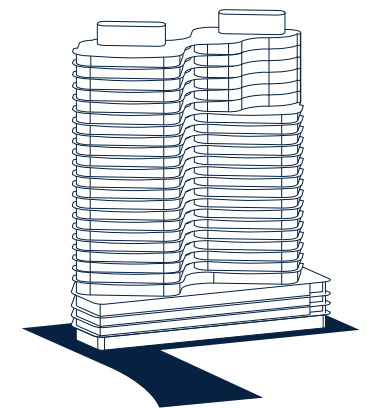
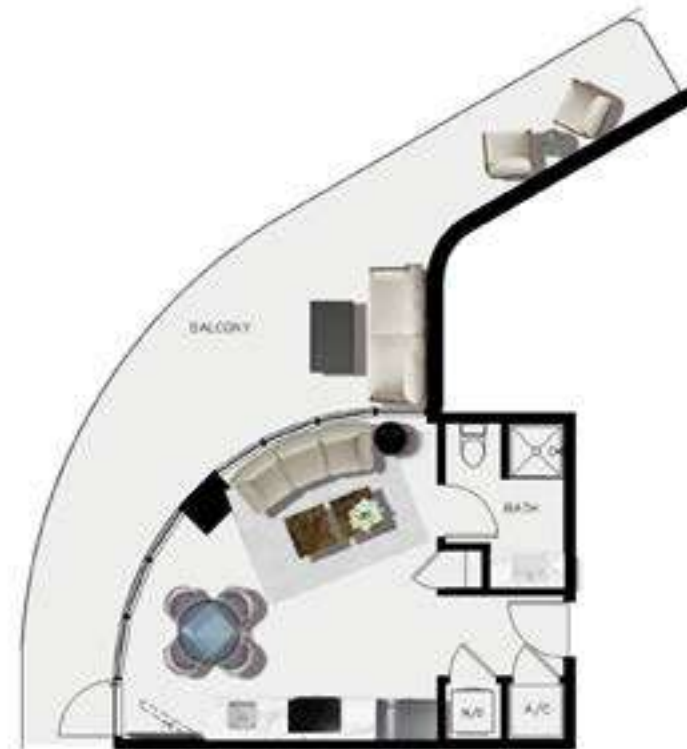




CS 01
FLOOR 2 – 4
SOUTH TOWER

STUDIO

400 SQ. FT. INTERIOR
370 SQ. FT. EXTERIOR



2785 NE 183RD STREET, AVENTURA FL 33160

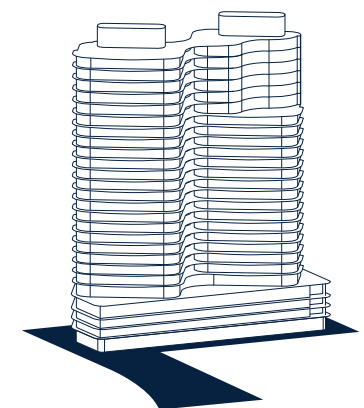
Stated dimensions are measured to the exterior boundaries of the exterior walls and the centerline of interior demising walls and in fact vary from the dimensions that would be determined by using the description and definition of the "Unit" set forth in the Declaration (which generally only includes the interior airspace between the perimeter walls and excludes interior structural components). Note that measurements of rooms set forth on this floor plan are generally taken at the greatest points of each given room (as if the room were a perfect rectangle), without regard for any cutouts. Accordingly, the area of the actual room will typically).



GS 02
FLOOR 2 – 4
SOUTH TOWER

STUDIO

415 SQ. FT. INTERIOR
390 SQ. FT. EXTERIOR



2785 NE 183RD STREET, AVENTURA FL 33160

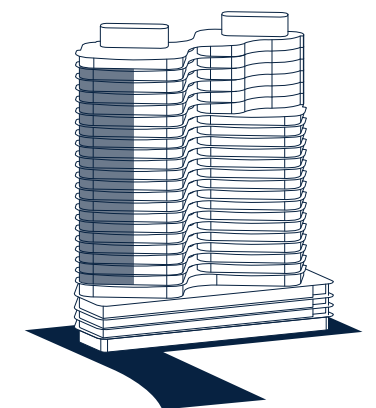
Stated dimensions are measured to the exterior boundaries of the exterior walls and the centerline of interior demising walls and in fact vary from the dimensions that would be determined by using the description and definition of the "Unit" set forth in the Declaration (which generally only includes the interior airspace between the perimeter walls and excludes interior structural components). Note that measurements of rooms set forth on this floor plan are generally taken at the greatest points of each given room (as if the room were a perfect rectangle), without regard for any cutouts. Accordingly, the area of the actual room will typically).

01
FLOOR 6 – 26
SOUTH TOWER

3 BEDROOMS
3 BATHROOMS
POWDER ROOM

2,635 SQ. FT. INTERIOR
355 SQ. FT. EXTERIOR

CORNER RESIDENCE 10' CEILINGS
CUSTOM DESIGNED ITALKRAFT KITCHEN
WITH 14 FT. ISLAND AND DOUBLE-SINKS
PRIMARY BATHROOM INCLUDES
SPRAWLING GLASS SHOWERS WITH
SOAKING TUB, NICHE WITH LIGHTING
SERVICE ENTRANCE



2785 NE 183RD STREET, AVENTURA FL 33160

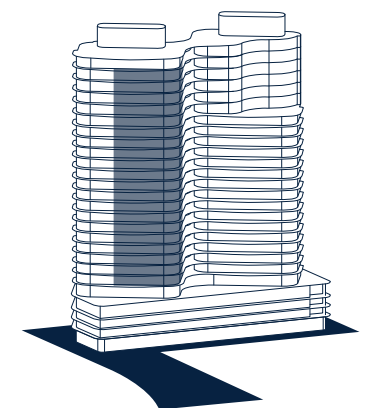
Stated dimensions are measured to the exterior boundaries of the exterior walls and the centerline of interior demising walls and in fact vary from the dimensions that would be determined by using the description and definition of the "Unit" set forth in the Declaration (which generally only includes the interior airspace between the perimeter walls and excludes interior structural components). Note that measurements of rooms set forth on this floor plan are generally taken at the greatest points of each given room (as if the room were a perfect rectangle), without regard for any cutouts. Accordingly, the area of the actual room will typically).

02
FLOOR 6 – 26
SOUTH TOWER

5 BEDROOMS
5 BATHROOMS

3,545 SQ. FT. INTERIOR
655 SQ. FT. EXTERIOR

CORNER RESIDENCE 10' CEILINGS
CUSTOM DESIGNED ITALKRAFT KITCHEN
WITH 14 FT. ISLAND AND DOUBLE-SINKS
PRIMARY BATHROOM INCLUDES
SPRAWLING GLASS SHOWERS WITH
SOAKING TUB, NICHE WITH LIGHTING
SERVICE ENTRANCE



2785 NE 183RD STREET, AVENTURA FL 33160

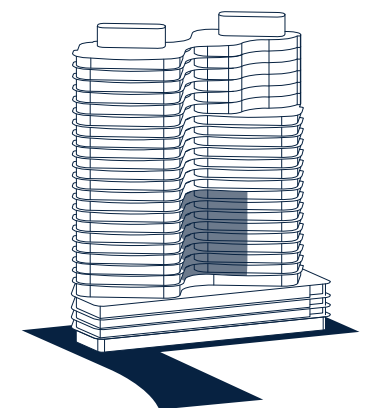
Stated dimensions are measured to the exterior boundaries of the exterior walls and the centerline of interior demising walls and in fact vary from the dimensions that would be determined by using the description and definition of the "Unit" set forth in the Declaration (which generally only includes the interior airspace between the perimeter walls and excludes interior structural components). Note that measurements of rooms set forth on this floor plan are generally taken at the greatest points of each given room (as if the room were a perfect rectangle), without regard for any cutouts. Accordingly, the area of the actual room will typically).

03
FLOOR 6 – 14
NORTH TOWER

3 BEDROOMS
3 BATHROOMS
POWDER ROOM
SKY TERRACE

2,240 SQ. FT. INTERIOR
620 SQ. FT. EXTERIOR

CORNER RESIDENCE 10' CEILINGS
CUSTOM DESIGNED ITALKRAFT KITCHEN
WITH DUAL BASIN PARTITIONED SINK
PRIMARY BATHROOM INCLUDES
SPRAWLING GLASS SHOWERS WITH
SOAKING TUB, NICHE WITH LIGHTING
SERVICE ENTRANCE



2785 NE 183RD STREET, AVENTURA FL 33160

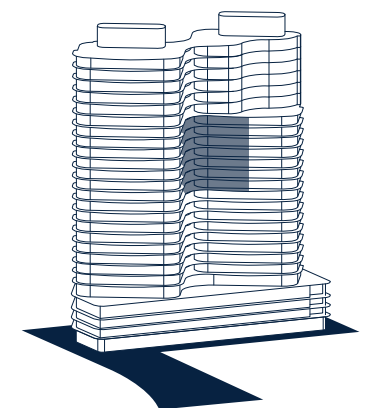
Stated dimensions are measured to the exterior boundaries of the exterior walls and the centerline of interior demising walls and in fact vary from the dimensions that would be determined by using the description and definition of the "Unit" set forth in the Declaration (which generally only includes the interior airspace between the perimeter walls and excludes interior structural components). Note that measurements of rooms set forth on this floor plan are generally taken at the greatest points of each given room (as if the room were a perfect rectangle), without regard for any cutouts. Accordingly, the area of the actual room will typically).

03
FLOOR 15 – 21
NORTH TOWER

4 BEDROOMS
4 BATHROOMS
POWDER ROOM
SKY TERRACE

2,890 SQ. FT. INTERIOR
820 SQ. FT. EXTERIOR

CORNER RESIDENCE 10' CEILINGS
CUSTOM DESIGNED ITALKRAFT KITCHEN
WITH 14 FT. ISLAND AND DOUBLE-SINKS
PRIMARY BATHROOM INCLUDES
SPRAWLING GLASS SHOWERS WITH
SOAKING TUB, NICHE WITH LIGHTING
SERVICE ENTRANCE



2785 NE 183RD STREET, AVENTURA FL 33160

Stated dimensions are measured to the exterior boundaries of the exterior walls and the centerline of interior demising walls and in fact vary from the dimensions that would be determined by using the description and definition of the "Unit" set forth in the Declaration (which generally only includes the interior airspace between the perimeter walls and excludes interior structural components). Note that measurements of rooms set forth on this floor plan are generally taken at the greatest points of each given room (as if the room were a perfect rectangle), without regard for any cutouts. Accordingly, the area of the actual room will typically).



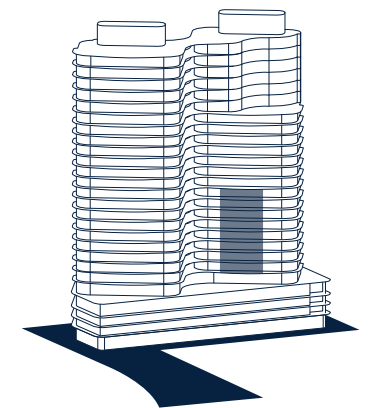


04
FLOOR 6 – 14
NORTH TOWER

2 BEDROOMS
2 BATHROOMS
POWDER ROOM

1,235 SQ. FT. INTERIOR
370 SQ. FT. EXTERIOR

10' CEILINGS
CUSTOM DESIGNED ITALKRAFT KITCHEN
BATHROOMS INCLUDES SPRAWLING
GLASS SHOWERS, NICHE WITH LIGHTING



2785 NE 183RD STREET, AVENTURA FL 33160

Stated dimensions are measured to the exterior boundaries of the exterior walls and the centerline of interior demising walls and in fact vary from the dimensions that would be determined by using the description and definition of the "Unit" set forth in the Declaration (which generally only includes the interior airspace between the perimeter walls and excludes interior structural components). Note that measurements of rooms set forth on this floor plan are generally taken at the greatest points of each given room (as if the room were a perfect rectangle), without regard for any cutouts. Accordingly, the area of the actual room will typically).

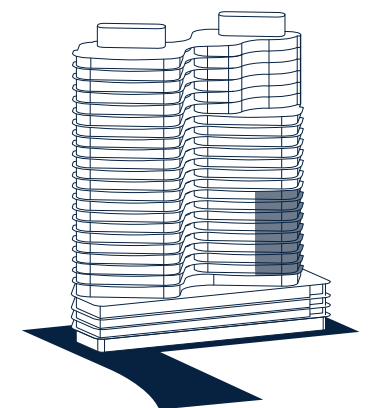


O5
FLOOR 6 – 14
NORTH TOWER

3 BEDROOMS
4 BATHROOMS
GAME ROOM
OFFICE/SERVICE QUARTERS
POWDER ROOM

2,460 SQ. FT. INTERIOR
355 SQ. FT. EXTERIOR

CORNER RESIDENCE 10' CEILINGS
CUSTOM DESIGNED ITALKRAFT KITCHEN
WITH 14 FT. ISLAND AND DOUBLE-SINKS
PRIMARY BATHROOM INCLUDES
SPRAWLING GLASS SHOWERS WITH
SOAKING TUB, NICHE WITH LIGHTING



2785 NE 183RD STREET, AVENTURA FL 33160

Stated dimensions are measured to the exterior boundaries of the exterior walls and the centerline of interior demising walls and in fact vary from the dimensions that would be determined by using the description and definition of the "Unit" set forth in the Declaration (which generally only includes the interior airspace between the perimeter walls and excludes interior structural components). Note that measurements of rooms set forth on this floor plan are generally taken at the greatest points of each given room (as if the room were a perfect rectangle), without regard for any cutouts. Accordingly, the area of the actual room will typically).

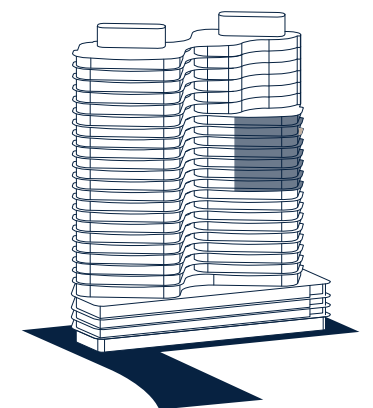


O5
FLOOR 15 – 21
NORTH TOWER

4 BEDROOMS
5 BATHROOMS
POWDER ROOM
OFFICE/SERVICE QUARTERS
MEDIA ROOM

3,045 SQ. FT. INTERIOR
525 SQ. FT. EXTERIOR

CORNER RESIDENCE 10' CEILINGS
CUSTOM DESIGNED ITALKRAFT KITCHEN
WITH 14 FT. ISLAND AND DOUBLE-SINKS
PRIMARY BATHROOM INCLUDES
SPRAWLING GLASS SHOWERS WITH
SOAKING TUB, NICHE WITH LIGHTING



2785 NE 183RD STREET, AVENTURA FL 33160

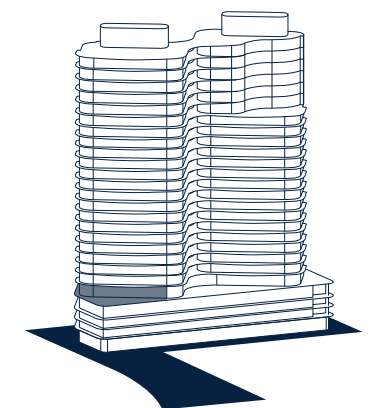
Stated dimensions are measured to the exterior boundaries of the exterior walls and the centerline of interior demising walls and in fact vary from the dimensions that would be determined by using the description and definition of the "Unit" set forth in the Declaration (which generally only includes the interior airspace between the perimeter walls and excludes interior structural components). Note that measurements of rooms set forth on this floor plan are generally taken at the greatest points of each given room (as if the room were a perfect rectangle), without regard for any cutouts. Accordingly, the area of the actual room will typically).

THE VILLA RESIDENCE 501 FLOOR 5 SOUTH TOWER

5 BEDROOMS
5 BATHROOMS
POWDER ROOM

3,510 SQ. FT. INTERIOR
2,150 SQ. FT. EXTERIOR
PRIVATE OUTDOOR POOL

CORNER RESIDENCE 10' CEILINGS
CUSTOM DESIGNED ITALKRAFT KITCHEN
WITH 14 FT. ISLAND AND DOUBLE-SINKS
PRIMARY BATHROOM INCLUDES
SPRAWLING GLASS SHOWERS WITH
SOAKING TUB, NICHE WITH LIGHTING
SERVICE ENTRANCE



2785 NE 183RD STREET, AVENTURA FL 33160

Stated dimensions are measured to the exterior boundaries of the exterior walls and the centerline of interior demising walls and in fact vary from the dimensions that would be determined by using the description and definition of the "Unit" set forth in the Declaration (which generally only includes the interior airspace between the perimeter walls and excludes interior structural components). Note that measurements of rooms set forth on this floor plan are generally taken at the greatest points of each given room (as if the room were a perfect rectangle), without regard for any cutouts. Accordingly, the area of the actual room will typically).

PRIVATE OVERSIZED LENAI

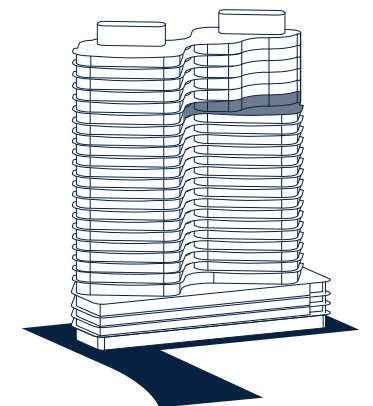


SKY VILLA 1 FLOOR 22 NORTH TOWER

4 BEDROOMS
4 BATHROOMS
POWDER ROOM
BAR
SKY TERRACE
OVERSIZED LANAI

4,160 SQ. FT. INTERIOR
3120 SQ. FT. BALCONY

FULL FLOOR RESIDENCE 10' CEILINGS
CUSTOM DESIGNED ITALKRAFT KITCHEN
WITH 14 FT. ISLAND AND DOUBLE-SINKS
PRIMARY BATHROOM INCLUDES
SPRAWLING GLASS SHOWERS WITH
SOAKING TUB, NICHE WITH LIGHTING
SERVICE ENTRANCE



2785 NE 183RD STREET, AVENTURA FL 33160

Stated dimensions are measured to the exterior boundaries of the exterior walls and the centerline of interior demising walls and in fact vary from the dimensions that would be determined by using the description and definition of the "Unit" set forth in the Declaration (which generally only includes the interior airspace between the perimeter walls and excludes interior structural components). Note that measurements of rooms set forth on this floor plan are generally taken at the greatest points of each given room (as if the room were a perfect rectangle), without regard for any cutouts. Accordingly, the area of the actual room will typically).

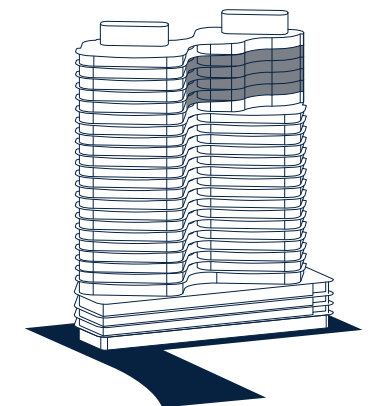


SKY VILLA 2-5 FLOOR 23-26 NORTH TOWER

4 BEDROOMS
4 BATHROOMS
POWDER ROOM
BAR
SKY TERRACE

4,160 SQ. FT. INTERIOR
615 SQ. FT. EXTERIOR

FULL FLOOR RESIDENCE 10' CEILINGS
CUSTOM DESIGNED ITALKRAFT KITCHEN
WITH 14 FT. ISLAND AND DOUBLE-SINKS
PRIMARY BATHROOM INCLUDES
SPRAWLING GLASS SHOWERS WITH
SOAKING TUB, NICHE WITH LIGHTING
SERVICE ENTRANCE



2785 NE 183RD STREET, AVENTURA FL 33160

Stated dimensions are measured to the exterior boundaries of the exterior walls and the centerline of interior demising walls and in fact vary from the dimensions that would be determined by using the description and definition of the "Unit" set forth in the Declaration (which generally only includes the interior airspace between the perimeter walls and excludes interior structural components). Note that measurements of rooms set forth on this floor plan are generally taken at the greatest points of each given room (as if the room were a perfect rectangle), without regard for any cutouts. Accordingly, the area of the actual room will typically).

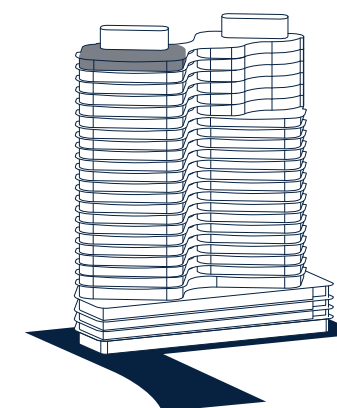


UPH 01 FLOOR 27+ ROOFTOP SOUTH TOWER

5 BEDROOMS
5 BATHROOMS
POWDER ROOM
WINE CELLAR
ROOFTOP TERRACE

6,180 SQ. FT. INTERIOR
1010 SQ. FT. BALCONY
5715 SQ. FT. ROOF DECK

FULL FLOOR 10' CEILINGS
CUSTOM DESIGNED ITALKRAFT KITCHEN
WITH 14 FT. ISLAND AND DOUBLE-SINKS
PRIMARY BATHROOM INCLUDES
SPRAWLING GLASS SHOWERS WITH
SOAKING TUB, NICHE WITH LIGHTING
SERVICE ENTRANCE



2785 NE 183RD STREET, AVENTURA FL 33160

Stated dimensions are measured to the exterior boundaries of the exterior walls and the centerline of interior demising walls and in fact vary from the dimensions that would be determined by using the description and definition of the "Unit" set forth in the Declaration (which generally only includes the interior airspace between the perimeter walls and excludes interior structural components). Note that measurements of rooms set forth on this floor plan are generally taken at the greatest points of each given room (as if the room were a perfect rectangle), without regard for any cutouts. Accordingly, the area of the actual room will typically).

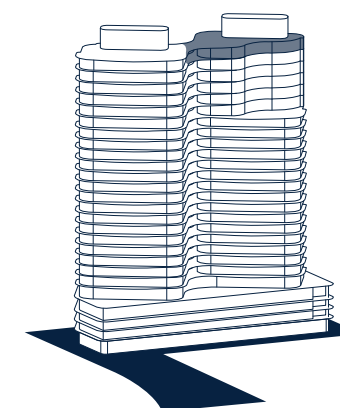


UPH 02 FLOOR 27 + ROOFTOP NORTH TOWER

4 BEDROOMS
4 BATHROOMS
POWDER ROOM
BAR
SKY TERRACE
ROOFTOP TERRACE

4,150 SQ. FT. INTERIOR
615 SQ. FT. SKY TERRACE
3040 SQ. FT. ROOF DECK

FULL FLOOR RESIDENCE 10' CEILINGS
CUSTOM DESIGNED ITALKRAFT KITCHEN
WITH 14 FT. ISLAND AND DOUBLE-SINKS
PRIMARY BATHROOM INCLUDES
SPRAWLING GLASS SHOWERS WITH
SOAKING TUB, NICHE WITH LIGHTING
SERVICE ENTRANCE



2785 NE 183RD STREET, AVENTURA FL 33160

Stated dimensions are measured to the exterior boundaries of the exterior walls and the centerline of interior demising walls and in fact vary from the dimensions that would be determined by using the description and definition of the "Unit" set forth in the Declaration (which generally only includes the interior airspace between the perimeter walls and excludes interior structural components). Note that measurements of rooms set forth on this floor plan are generally taken at the greatest points of each given room (as if the room were a perfect rectangle), without regard for any cutouts. Accordingly, the area of the actual room will typically).





TEAM



The Team



2151 Development Group is a full-service real estate investment and development company based in South Florida, overseeing acquisitions, development, and construction management for projects in the country's most sought-after markets.



2020 Acquisitions was founded in 2005 with a view toward producing outstanding returns by leveraging creativity and resources. With expertise in all aspects of complexity, the company has successfully developed challenging residential, commercial and industrial projects in New York, New Jersey, Florida and California.

COMPASS
DEVELOPMENT
MARKETING
GROUP

From project inception to building sellout, Compass Development Marketing Group partners with the world's most forward-thinking developers and innovative architects through the lifespan of a project. Leveraging tenured expertise and the industry's most powerful technological resources, we provide strategic advice to our clients.



ID & Design International is an award-winning interior design and environmental branding firm specializing in senior living, multifamily, hospitality, retail, mixed-use, and entertainment projects worldwide.



IDEA Architect is a South Florida architecture firm committed to a multidisciplinary approach integrating construction means and methods into design with expertise in mixed-use, multi-family residential, hospitality, office, and commercial projects.



Moss is a national construction management company providing innovative solutions resulting in award-winning projects across the United States. Moss brings an honest, positive, and intelligent approach that's not readily found in the construction industry and has created recognizable, sustainable, innovative, and award-winning buildings.