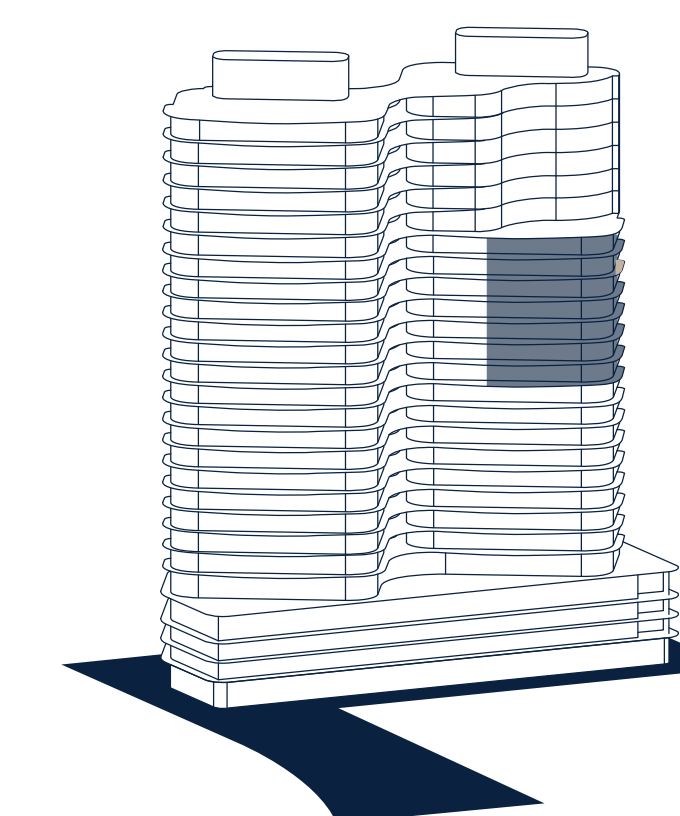


05  
FLOOR 15 – 21  
NORTH TOWER

4 BEDROOMS  
5 BATHROOMS  
POWDER ROOM  
OFFICE/SERVICE QUARTERS  
MEDIA ROOM

**3,045 SQ. FT. INTERIOR**  
**525 SQ. FT. EXTERIOR**

CORNER RESIDENCE 10' CEILINGS  
CUSTOM DESIGNED ITALKRAFT KITCHEN  
WITH 14 FT. ISLAND AND DOUBLE-SINKS  
PRIMARY BATHROOM INCLUDES  
SPRAWLING GLASS SHOWERS WITH  
SOAKING TUB, NICHE WITH LIGHTING



2785 NE 183RD STREET, AVENTURA FL 33160

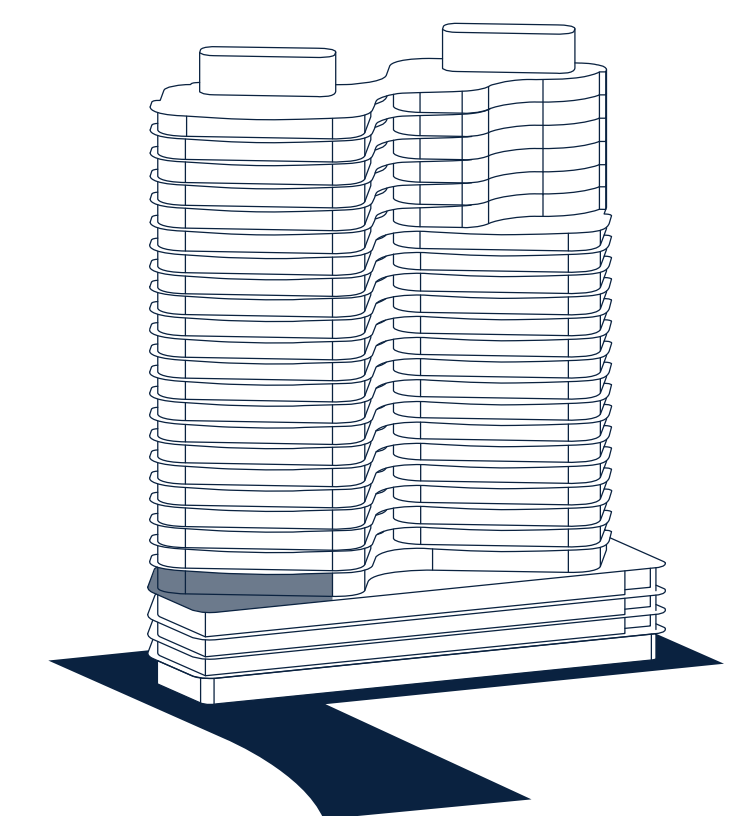
Stated dimensions are measured to the exterior boundaries of the exterior walls and the centerline of interior demising walls and in fact vary from the dimensions that would be determined by using the description and definition of the "Unit" set forth in the Declaration (which generally only includes the interior airspace between the perimeter walls and excludes interior structural components). Note that measurements of rooms set forth on this floor plan are generally taken at the greatest points of each given room (as if the room were a perfect rectangle), without regard for any cutouts. Accordingly, the area of the actual room will typically).

THE VILLA  
RESIDENCE 501  
FLOOR 5  
SOUTH TOWER

5 BEDROOMS  
5 BATHROOMS  
POWDER ROOM

**3,510 SQ. FT. INTERIOR**  
**2,150 SQ. FT. EXTERIOR**  
PRIVATE OUTDOOR POOL

CORNER RESIDENCE 10' CEILINGS  
CUSTOM DESIGNED ITALKRAFT KITCHEN  
WITH 14 FT. ISLAND AND DOUBLE-SINKS  
PRIMARY BATHROOM INCLUDES  
SPRAWLING GLASS SHOWERS WITH  
SOAKING TUB, NICHE WITH LIGHTING  
SERVICE ENTRANCE



2785 NE 183RD STREET, AVENTURA FL 33160

Stated dimensions are measured to the exterior boundaries of the exterior walls and the centerline of interior demising walls and in fact vary from the dimensions that would be determined by using the description and definition of the "Unit" set forth in the Declaration (which generally only includes the interior airspace between the perimeter walls and excludes interior structural components). Note that measurements of rooms set forth on this floor plan are generally taken at the greatest points of each given room (as if the room were a perfect rectangle), without regard for any cutouts. Accordingly, the area of the actual room will typically).

# TAL

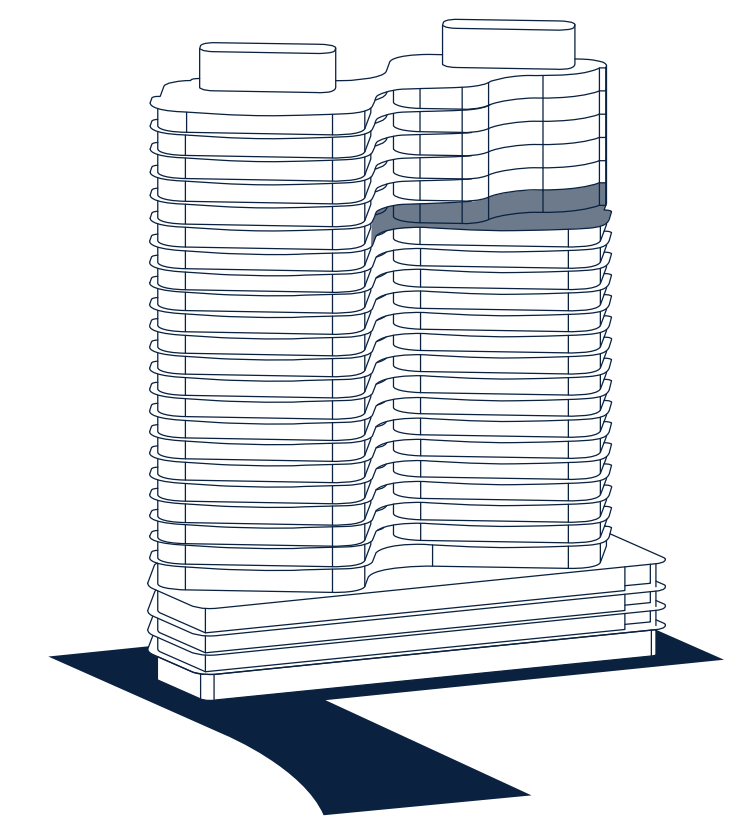
AVENTURA

## SKY VILLA 1 FLOOR 22 NORTH TOWER

4 BEDROOMS  
4 BATHROOMS  
POWDER ROOM  
BAR  
SKY TERRACE  
OVERSIZED LANAI

**4,160 SQ. FT. INTERIOR**  
**3120 SQ. FT. BALCONY**

FULL FLOOR RESIDENCE 10' CEILINGS  
CUSTOM DESIGNED ITALKRAFT KITCHEN  
WITH 14 FT. ISLAND AND DOUBLE-SINKS  
PRIMARY BATHROOM INCLUDES  
SPRAWLING GLASS SHOWERS WITH  
SOAKING TUB, NICHE WITH LIGHTING  
SERVICE ENTRANCE



2785 NE 183RD STREET, AVENTURA FL 33160

Stated dimensions are measured to the exterior boundaries of the exterior walls and the centerline of interior demising walls and in fact vary from the dimensions that would be determined by using the description and definition of the "Unit" set forth in the Declaration (which generally only includes the interior airspace between the perimeter walls and excludes interior structural components). Note that measurements of rooms set forth on this floor plan are generally taken at the greatest points of each given room (as if the room were a perfect rectangle), without regard for any cutouts. Accordingly, the area of the actual room will typically).



# TAL

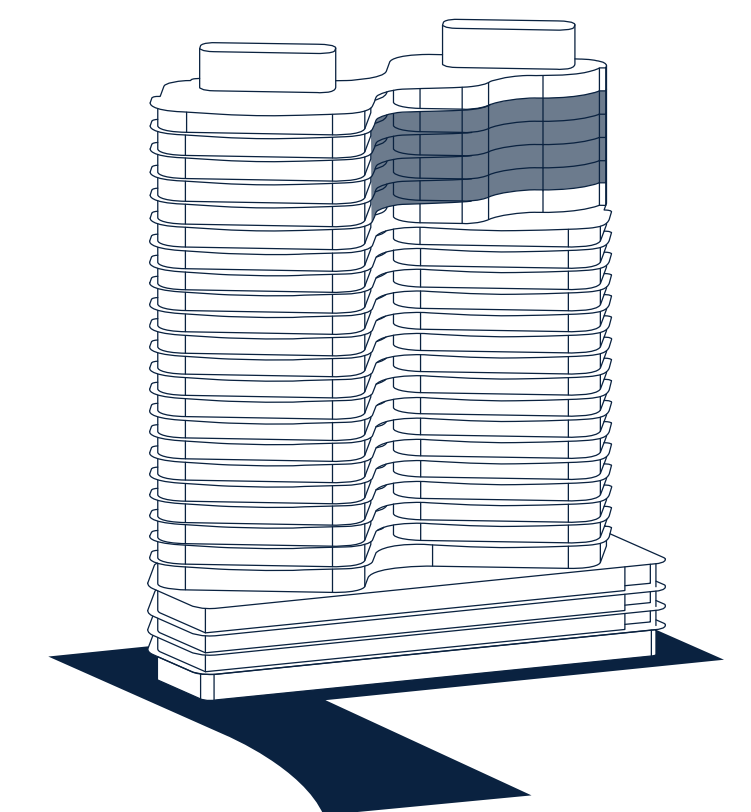
AVENTURA

SKY VILLA 2-5  
FLOOR 23-26  
NORTH TOWER

4 BEDROOMS  
4 BATHROOMS  
POWDER ROOM  
BAR  
SKY TERRACE

**4,160 SQ. FT. INTERIOR**  
**615 SQ. FT. EXTERIOR**

FULL FLOOR RESIDENCE 10' CEILINGS  
CUSTOM DESIGNED ITALKRAFT KITCHEN  
WITH 14 FT. ISLAND AND DOUBLE-SINKS  
PRIMARY BATHROOM INCLUDES  
SPRAWLING GLASS SHOWERS WITH  
SOAKING TUB, NICHE WITH LIGHTING  
SERVICE ENTRANCE



2785 NE 183RD STREET, AVENTURA FL 33160

Stated dimensions are measured to the exterior boundaries of the exterior walls and the centerline of interior demising walls and in fact vary from the dimensions that would be determined by using the description and definition of the "Unit" set forth in the Declaration (which generally only includes the interior airspace between the perimeter walls and excludes interior structural components). Note that measurements of rooms set forth on this floor plan are generally taken at the greatest points of each given room (as if the room were a perfect rectangle), without regard for any cutouts. Accordingly, the area of the actual room will typically).

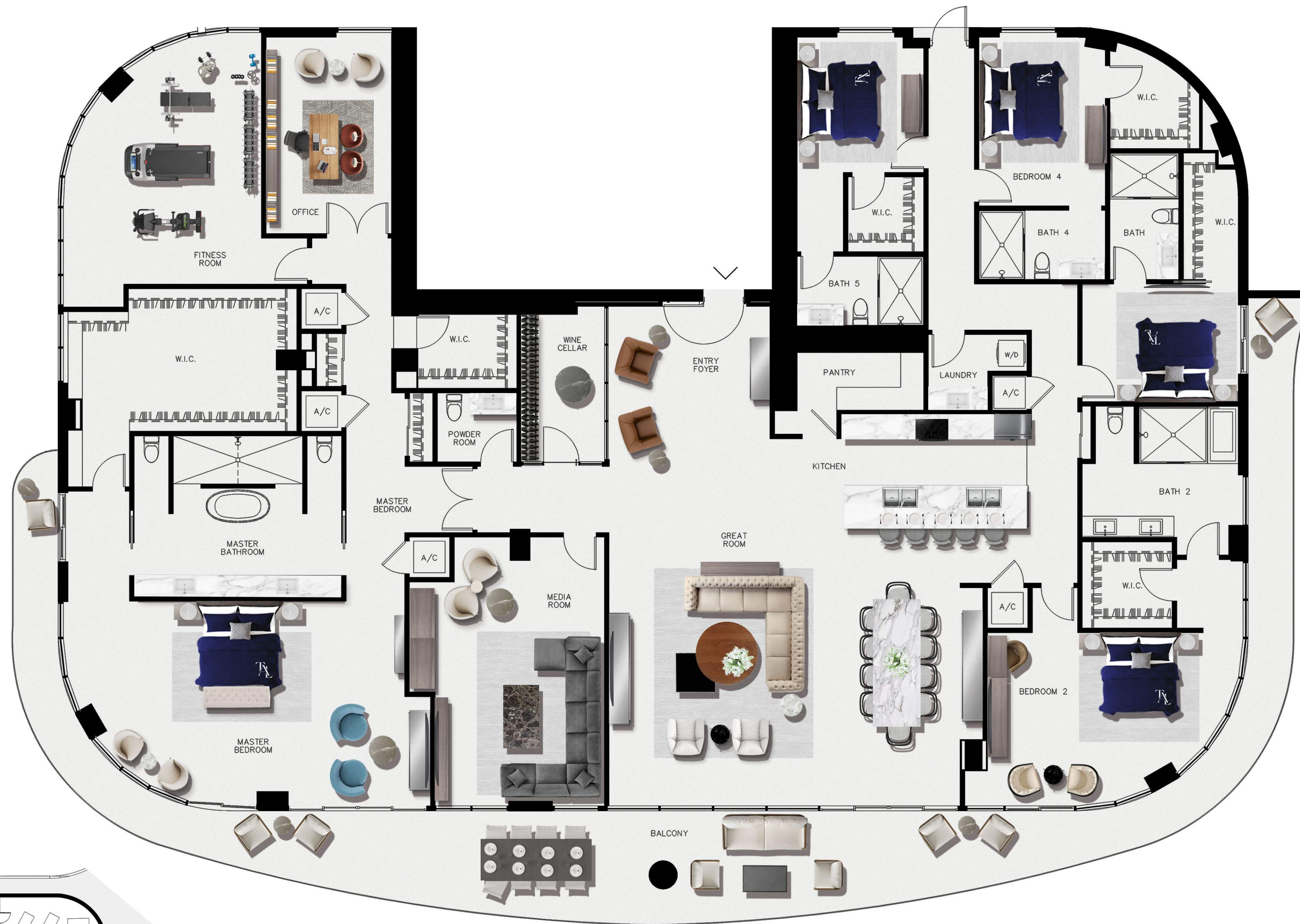
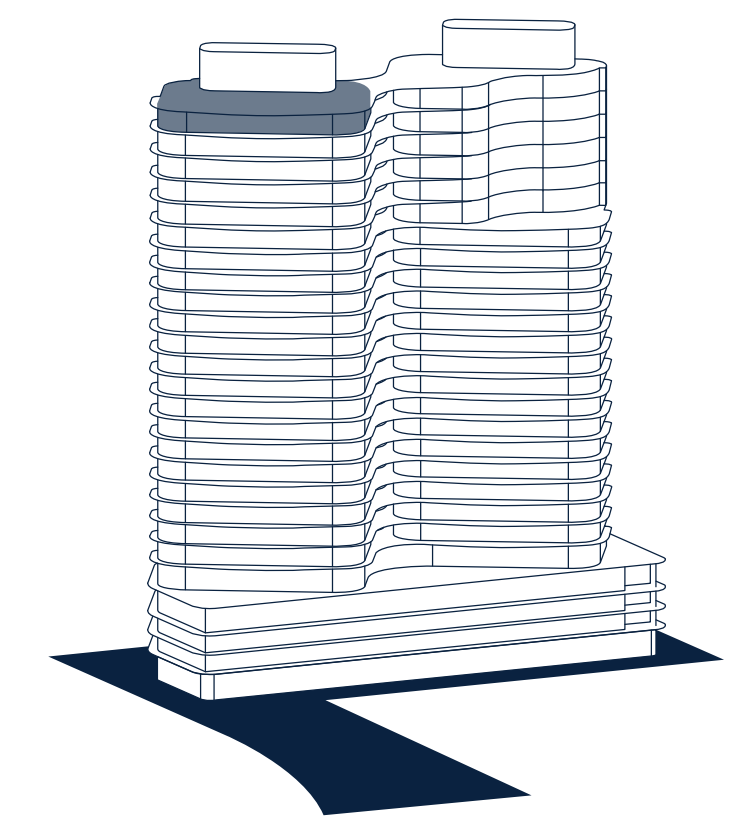


UPH 01  
FLOOR 27+ ROOFTOP  
SOUTH TOWER

5 BEDROOMS  
5 BATHROOMS  
POWDER ROOM  
WINE CELLAR  
ROOFTOP TERRACE

**6,180 SQ. FT. INTERIOR**  
**1010 SQ. FT. BALCONY**  
**5715 SQ. FT. ROOF DECK**

FULL FLOOR 10' CEILINGS  
CUSTOM DESIGNED ITALKRAFT KITCHEN  
WITH 14 FT. ISLAND AND DOUBLE-SINKS  
PRIMARY BATHROOM INCLUDES  
SPRAWLING GLASS SHOWERS WITH  
SOAKING TUB, NICHE WITH LIGHTING  
SERVICE ENTRANCE



2785 NE 183RD STREET, AVENTURA FL 33160

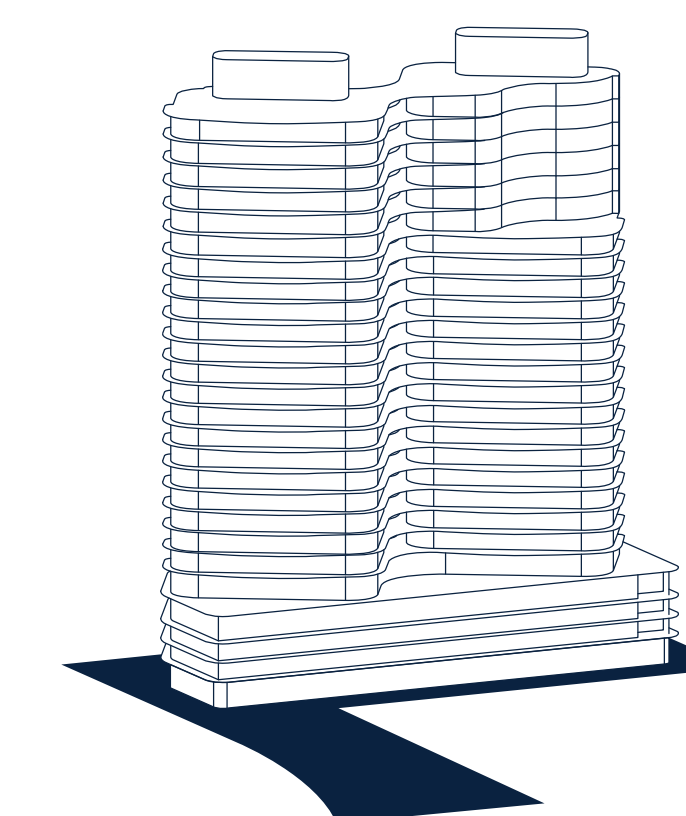
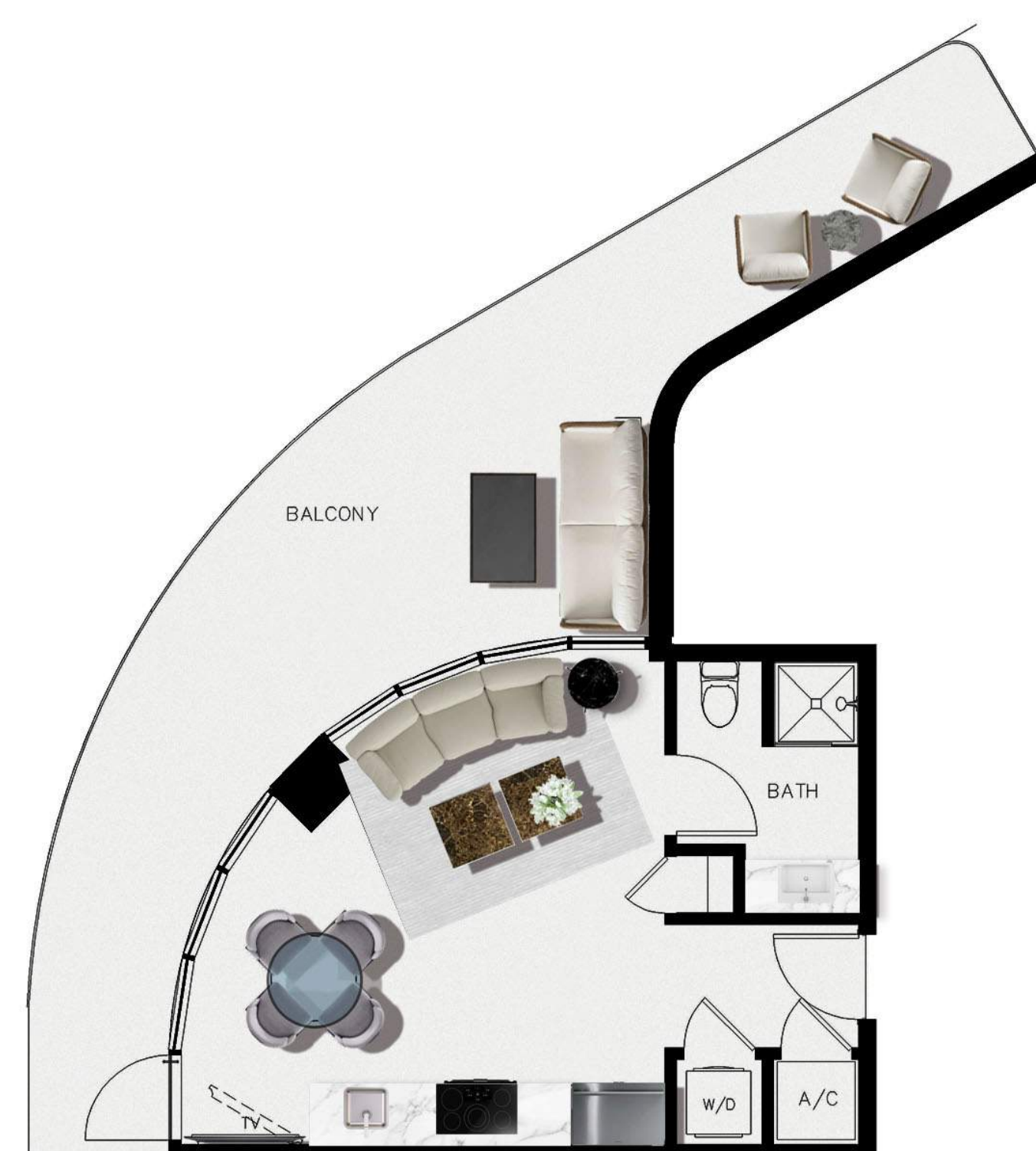
Stated dimensions are measured to the exterior boundaries of the exterior walls and the centerline of interior demising walls and in fact vary from the dimensions that would be determined by using the description and definition of the "Unit" set forth in the Declaration (which generally only includes the interior airspace between the perimeter walls and excludes interior structural components). Note that measurements of rooms set forth on this floor plan are generally taken at the greatest points of each given room (as if the room were a perfect rectangle), without regard for any cutouts. Accordingly, the area of the actual room will typically).



GS 01  
FLOOR 2-4  
SOUTH TOWER

STUDIO

**400 SQ. FT.** INTERIOR  
**370 SQ. FT.** EXTERIOR



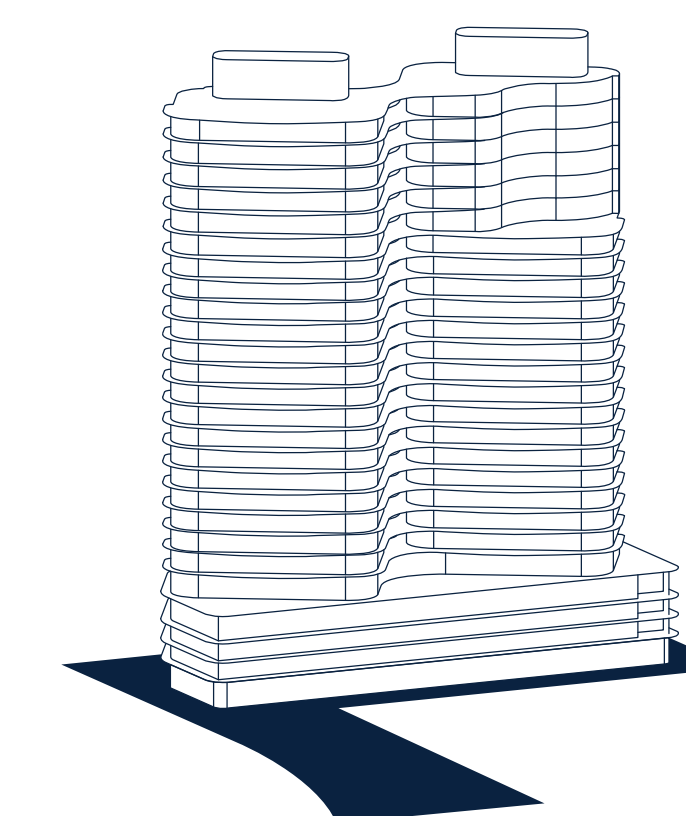
2785 NE 183RD STREET, AVENTURA FL 33160

Stated dimensions are measured to the exterior boundaries of the exterior walls and the centerline of interior demising walls and in fact vary from the dimensions that would be determined by using the description and definition of the "Unit" set forth in the Declaration (which generally only includes the interior airspace between the perimeter walls and excludes interior structural components). Note that measurements of rooms set forth on this floor plan are generally taken at the greatest points of each given room (as if the room were a perfect rectangle), without regard for any cutouts. Accordingly, the area of the actual room will typically).

GS 02  
FLOOR 2-4  
SOUTH TOWER

STUDIO

**415 SQ. FT.** INTERIOR  
**390 SQ. FT.** EXTERIOR



2785 NE 183RD STREET, AVENTURA FL 33160

Stated dimensions are measured to the exterior boundaries of the exterior walls and the centerline of interior demising walls and in fact vary from the dimensions that would be determined by using the description and definition of the "Unit" set forth in the Declaration (which generally only includes the interior airspace between the perimeter walls and excludes interior structural components). Note that measurements of rooms set forth on this floor plan are generally taken at the greatest points of each given room (as if the room were a perfect rectangle), without regard for any cutouts. Accordingly, the area of the actual room will typically).

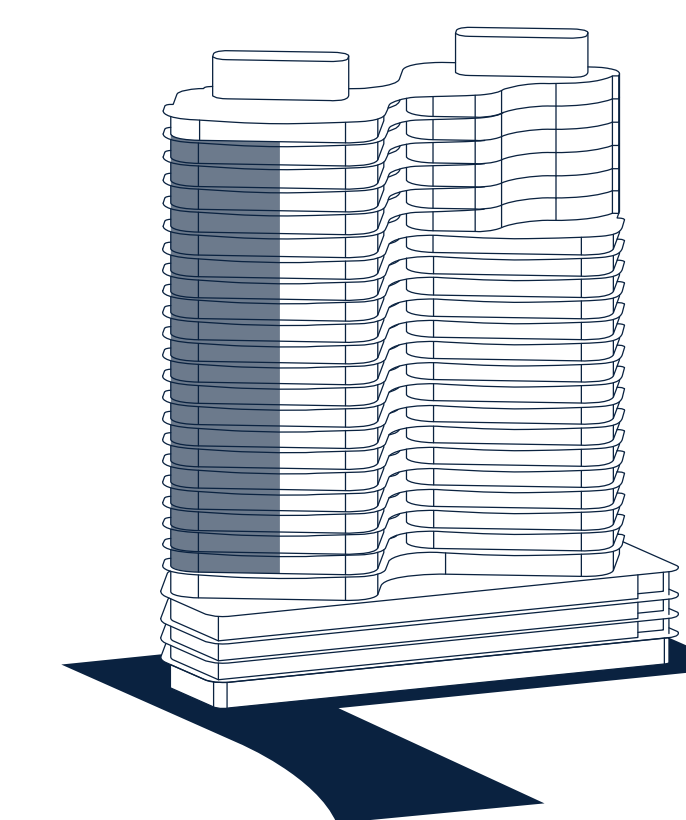


01  
FLOOR 6-26  
SOUTH TOWER

3 BEDROOMS  
3 BATHROOMS  
POWDER ROOM

**2,635 SQ. FT. INTERIOR**  
**355 SQ. FT. EXTERIOR**

CORNER RESIDENCE 10' CEILINGS  
CUSTOM DESIGNED ITALKRAFT KITCHEN  
WITH 14 FT. ISLAND AND DOUBLE-SINKS  
PRIMARY BATHROOM INCLUDES  
SPRAWLING GLASS SHOWERS WITH  
SOAKING TUB, NICHE WITH LIGHTING  
SERVICE ENTRANCE



2785 NE 183RD STREET, AVENTURA FL 33160

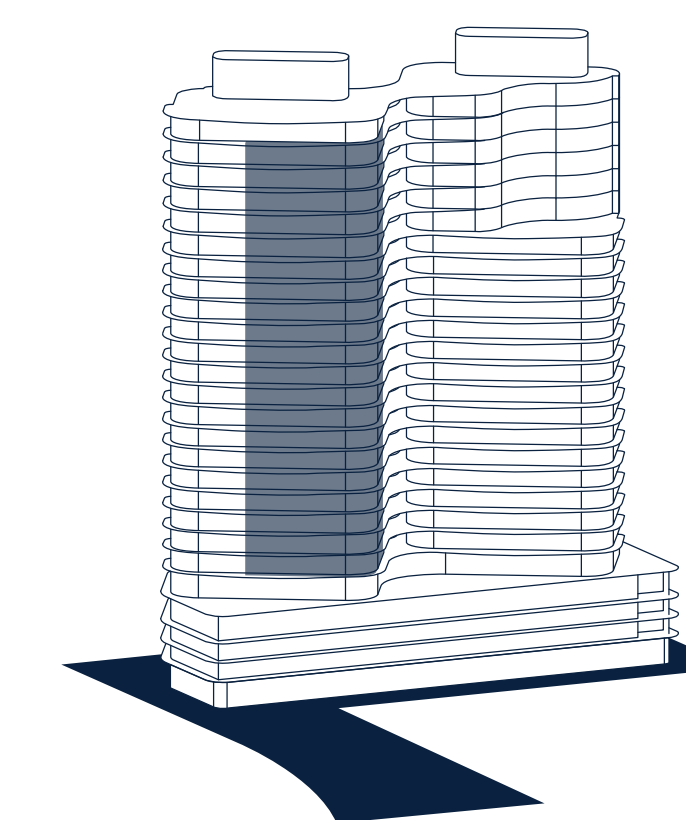
Stated dimensions are measured to the exterior boundaries of the exterior walls and the centerline of interior demising walls and in fact vary from the dimensions that would be determined by using the description and definition of the "Unit" set forth in the Declaration (which generally only includes the interior airspace between the perimeter walls and excludes interior structural components). Note that measurements of rooms set forth on this floor plan are generally taken at the greatest points of each given room (as if the room were a perfect rectangle), without regard for any cutouts. Accordingly, the area of the actual room will typically).

02  
FLOOR 6-26  
SOUTH TOWER

5 BEDROOMS  
5 BATHROOMS

**3,545 SQ. FT. INTERIOR**  
**655 SQ. FT. EXTERIOR**

CORNER RESIDENCE 10' CEILINGS  
CUSTOM DESIGNED ITALKRAFT KITCHEN  
WITH 14 FT. ISLAND AND DOUBLE-SINKS  
PRIMARY BATHROOM INCLUDES  
SPRAWLING GLASS SHOWERS WITH  
SOAKING TUB, NICHE WITH LIGHTING  
SERVICE ENTRANCE



2785 NE 183RD STREET, AVENTURA FL 33160

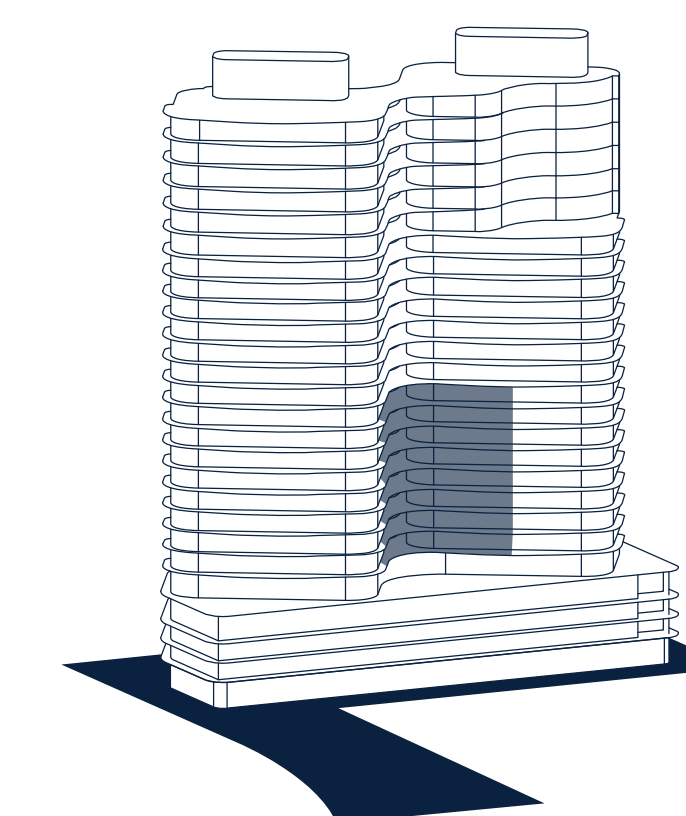
Stated dimensions are measured to the exterior boundaries of the exterior walls and the centerline of interior demising walls and in fact vary from the dimensions that would be determined by using the description and definition of the "Unit" set forth in the Declaration (which generally only includes the interior airspace between the perimeter walls and excludes interior structural components). Note that measurements of rooms set forth on this floor plan are generally taken at the greatest points of each given room (as if the room were a perfect rectangle), without regard for any cutouts. Accordingly, the area of the actual room will typically).

03  
FLOOR 6-14  
NORTH TOWER

3 BEDROOMS  
3 BATHROOMS  
POWDER ROOM  
SKY TERRACE

**2,240 SQ. FT.** INTERIOR  
**620 SQ. FT.** EXTERIOR

CORNER RESIDENCE 10' CEILINGS  
CUSTOM DESIGNED ITALKRAFT KITCHEN  
WITH DUAL BASIN PARTITIONED SINK  
PRIMARY BATHROOM INCLUDES  
SPRAWLING GLASS SHOWERS WITH  
SOAKING TUB, NICHE WITH LIGHTING  
SERVICE ENTRANCE



2785 NE 183RD STREET, AVENTURA FL 33160

Stated dimensions are measured to the exterior boundaries of the exterior walls and the centerline of interior demising walls and in fact vary from the dimensions that would be determined by using the description and definition of the "Unit" set forth in the Declaration (which generally only includes the interior airspace between the perimeter walls and excludes interior structural components). Note that measurements of rooms set forth on this floor plan are generally taken at the greatest points of each given room (as if the room were a perfect rectangle), without regard for any cutouts. Accordingly, the area of the actual room will typically).

# TAL

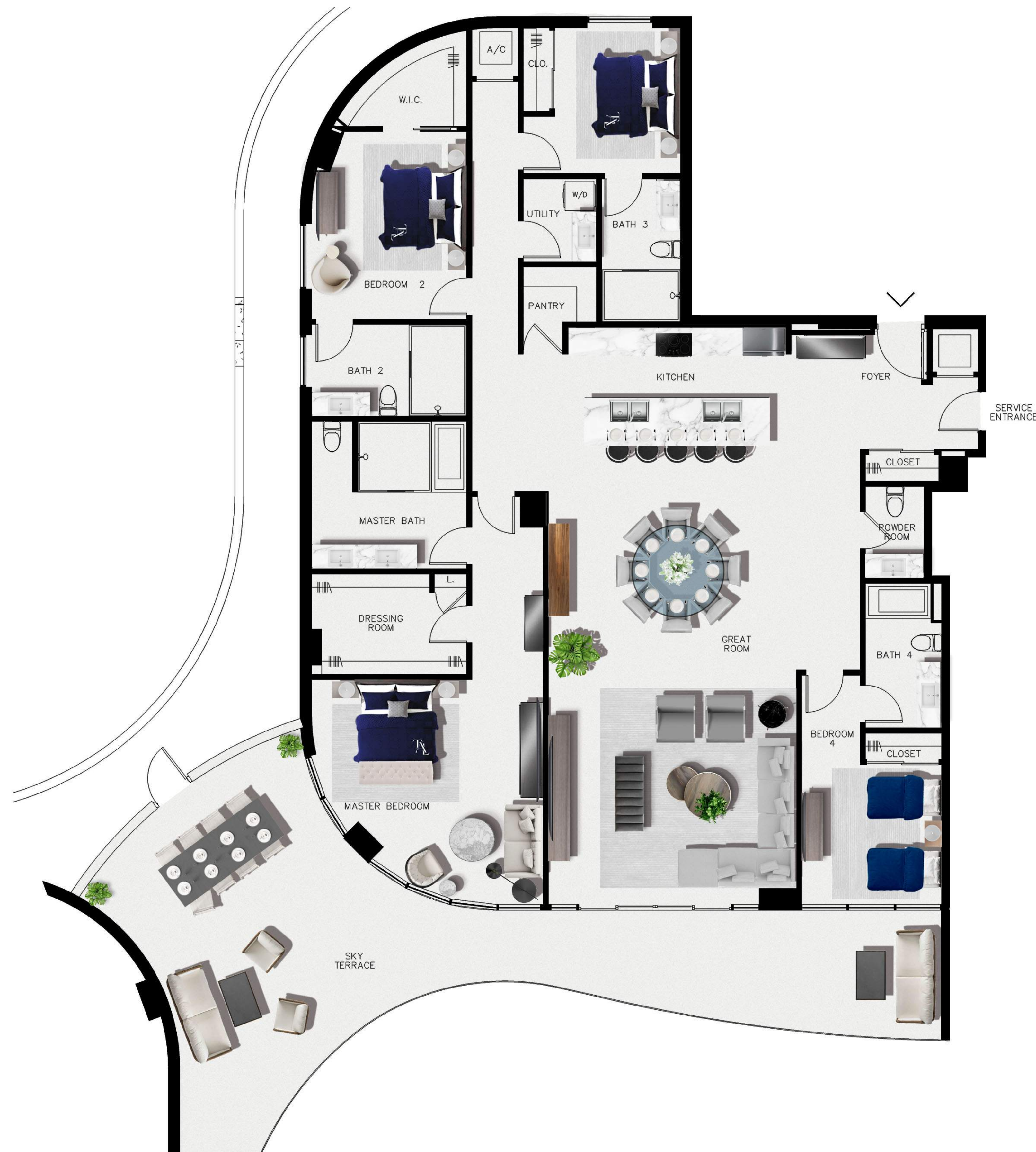
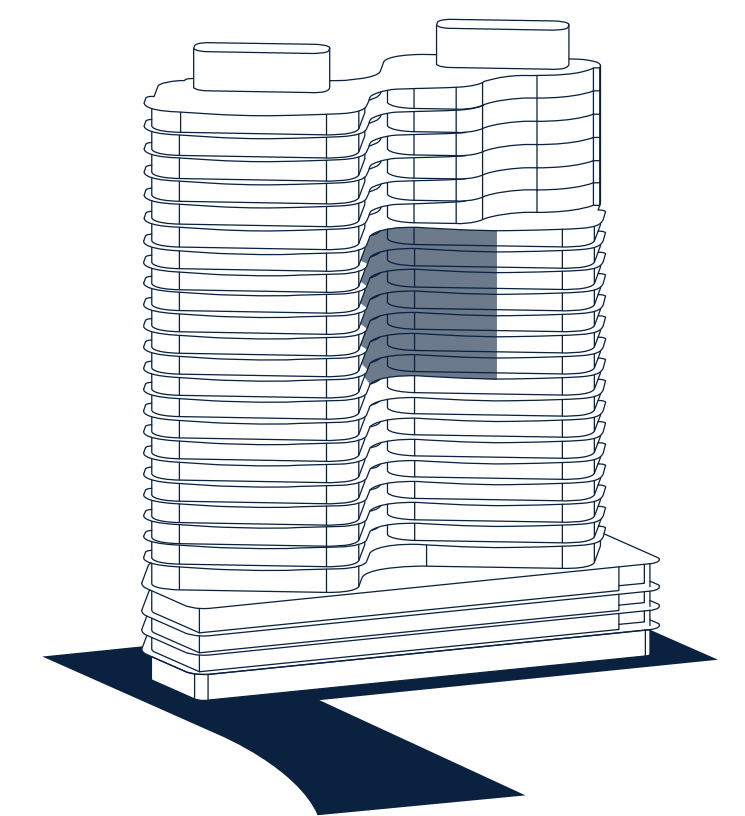
AVENTURA

03  
FLOOR 15-21  
NORTH TOWER

4 BEDROOMS  
4 BATHROOMS  
POWDER ROOM  
SKY TERRACE

**2,890 SQ. FT. INTERIOR**  
**820 SQ. FT. EXTERIOR**

CORNER RESIDENCE 10' CEILINGS  
CUSTOM DESIGNED ITALKRAFT KITCHEN  
WITH 14 FT. ISLAND AND DOUBLE-SINKS  
PRIMARY BATHROOM INCLUDES  
SPRAWLING GLASS SHOWERS WITH  
SOAKING TUB, NICHE WITH LIGHTING  
SERVICE ENTRANCE



2785 NE 183RD STREET, AVENTURA FL 33160

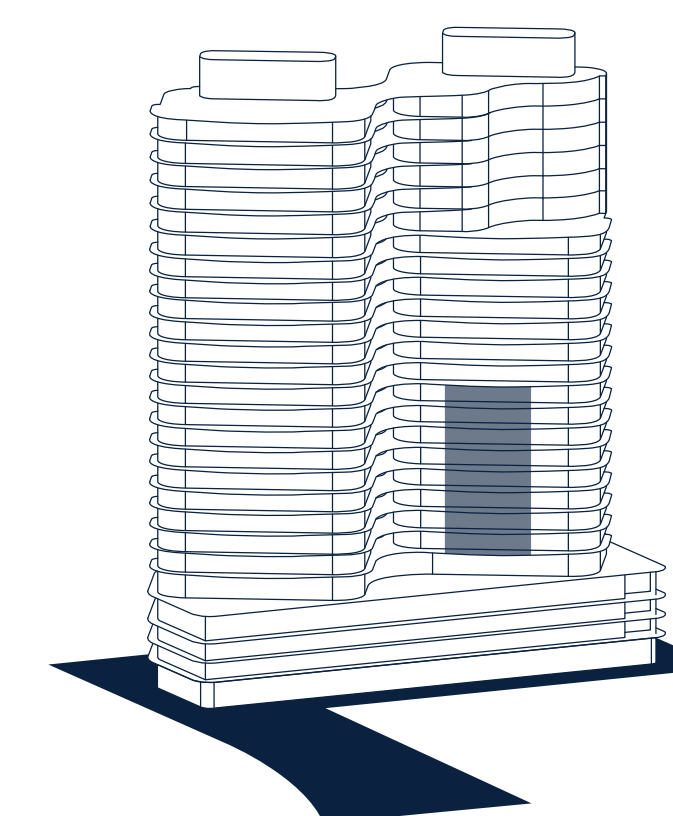
Stated dimensions are measured to the exterior boundaries of the exterior walls and the centerline of interior demising walls and in fact vary from the dimensions that would be determined by using the description and definition of the "Unit" set forth in the Declaration (which generally only includes the interior airspace between the perimeter walls and excludes interior structural components). Note that measurements of rooms set forth on this floor plan are generally taken at the greatest points of each given room (as if the room were a perfect rectangle), without regard for any cutouts. Accordingly, the area of the actual room will typically).

04  
FLOOR 6-14  
NORTH TOWER

2 BEDROOMS  
2 BATHROOMS  
POWDER ROOM

**1,235 SQ. FT. INTERIOR**  
**370 SQ. FT. EXTERIOR**

10' CEILINGS  
CUSTOM DESIGNED ITALKRAFT KITCHEN  
BATHROOMS INCLUDES SPRAWLING  
GLASS SHOWERS, NICHE WITH LIGHTING



2785 NE 183RD STREET, AVENTURA FL 33160

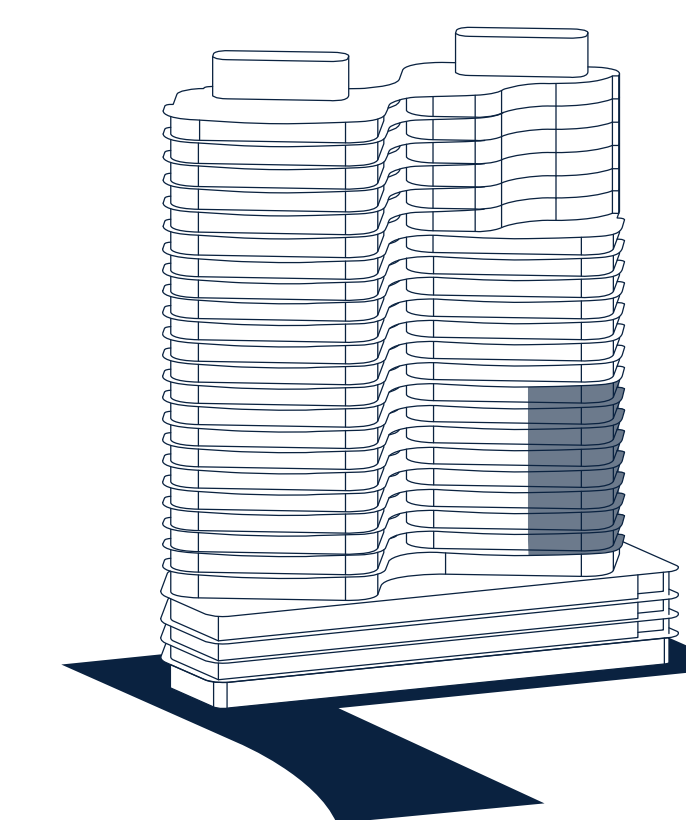
Stated dimensions are measured to the exterior boundaries of the exterior walls and the centerline of interior demising walls and in fact vary from the dimensions that would be determined by using the description and definition of the "Unit" set forth in the Declaration (which generally only includes the interior airspace between the perimeter walls and excludes interior structural components). Note that measurements of rooms set forth on this floor plan are generally taken at the greatest points of each given room (as if the room were a perfect rectangle), without regard for any cutouts. Accordingly, the area of the actual room will typically).

05  
FLOOR 6-14  
NORTH TOWER

3 BEDROOMS  
4 BATHROOMS  
GAME ROOM  
OFFICE/SERVICE QUARTERS  
POWDER ROOM

**2,460 SQ. FT. INTERIOR**  
**355 SQ. FT. EXTERIOR**

CORNER RESIDENCE 10' CEILINGS  
CUSTOM DESIGNED ITALKRAFT KITCHEN  
WITH 14 FT. ISLAND AND DOUBLE-SINKS  
PRIMARY BATHROOM INCLUDES  
SPRAWLING GLASS SHOWERS WITH  
SOAKING TUB, NICHE WITH LIGHTING



2785 NE 183RD STREET, AVENTURA FL 33160

Stated dimensions are measured to the exterior boundaries of the exterior walls and the centerline of interior demising walls and in fact vary from the dimensions that would be determined by using the description and definition of the "Unit" set forth in the Declaration (which generally only includes the interior airspace between the perimeter walls and excludes interior structural components). Note that measurements of rooms set forth on this floor plan are generally taken at the greatest points of each given room (as if the room were a perfect rectangle), without regard for any cutouts. Accordingly, the area of the actual room will typically).