

RESIDENCE MIX

1 Bedroom	2
2 Bedrooms	2
2 Bedrooms + Office	9
2 Bedrooms + Den + Office	2
4 Bedrooms	2

2200 BRICKELL

TYPE A

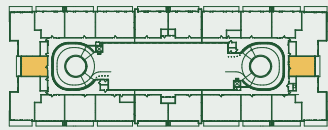
UNITS 06, 17

1 BEDROOM + DEN

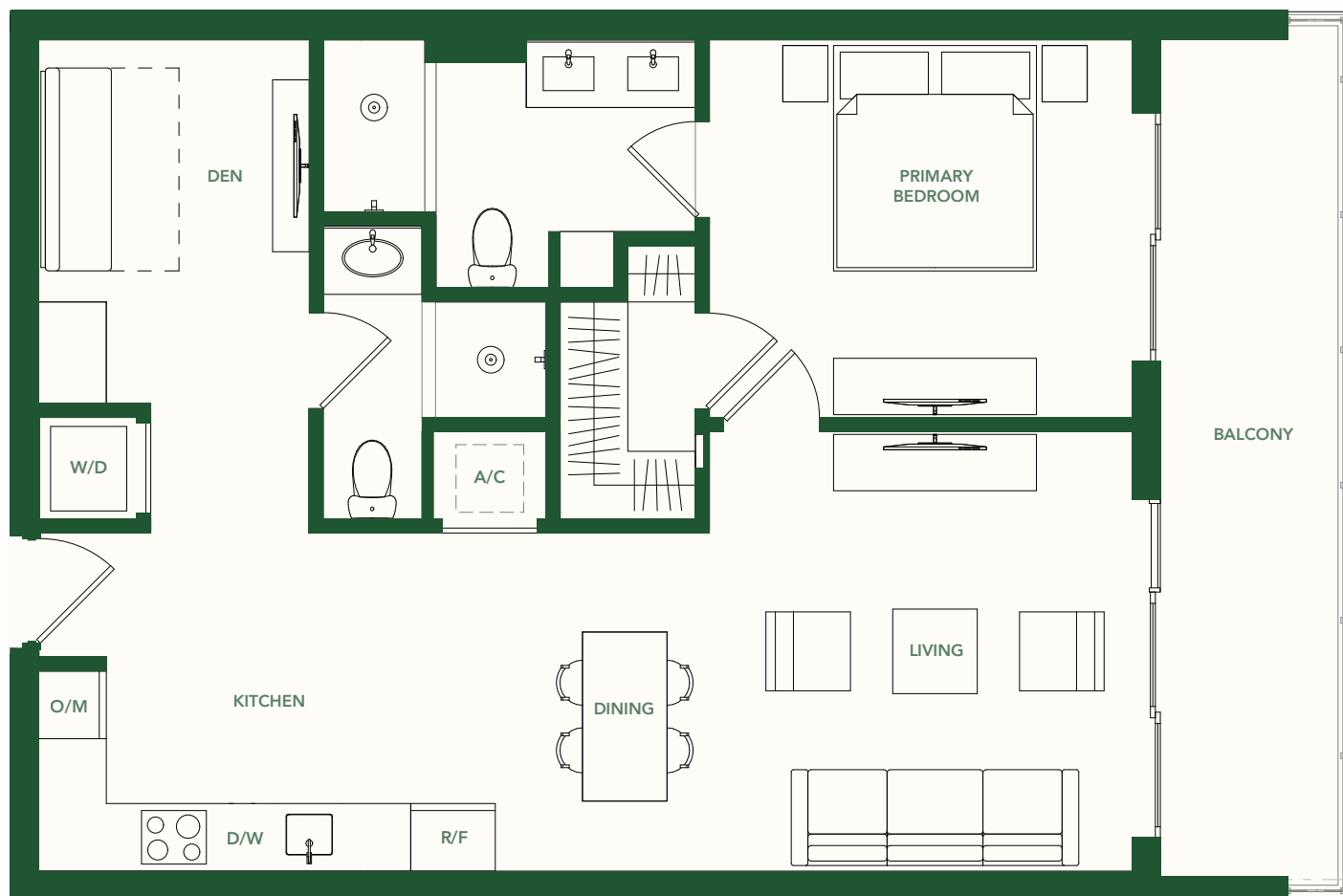
2 BATHROOMS

LEVELS 2 – 5

INTERIOR	864 SF / 80 M ²
BALCONY	124 SF / 12 M ²
TOTAL	988 SF / 92 M ²



BRICKELL AVE.



These drawings are conceptual only and are for the convenience of reference. They should not be relied upon as representations, express or implied, of the final detail of the residences. Units shown are examples of unit types and may not depict actual units. Stated square footages are ranges for a particular unit type and are measured to the exterior boundaries of the exterior walls and the centerline of interior demising walls and in fact vary from the area that would be determined by using the description and definition of the unit set forth in the declaration (which generally only includes the interior airspace between the perimeter walls and excludes interior structural components). Note that measurements of rooms set forth on this floorplan are generally taken at the greatest points of each given room (as if the room were a perfect rectangle), without regard for any cutouts. Accordingly, the area of the actual room will typically be smaller than the product obtained by multiplying the stated length times width. All dimensions are approximate and may vary with actual construction, and all floor plans and development plans are subject to change.

ARIA **LARGO** **PLA**
DEVELOPER/BUILDER PROJECTS

2200
BRICKELL

TYPE C

UNITS 04, 08, 15, 19

2 BEDROOMS

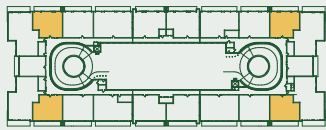
2 BATHROOMS

LEVEL 2 – 5

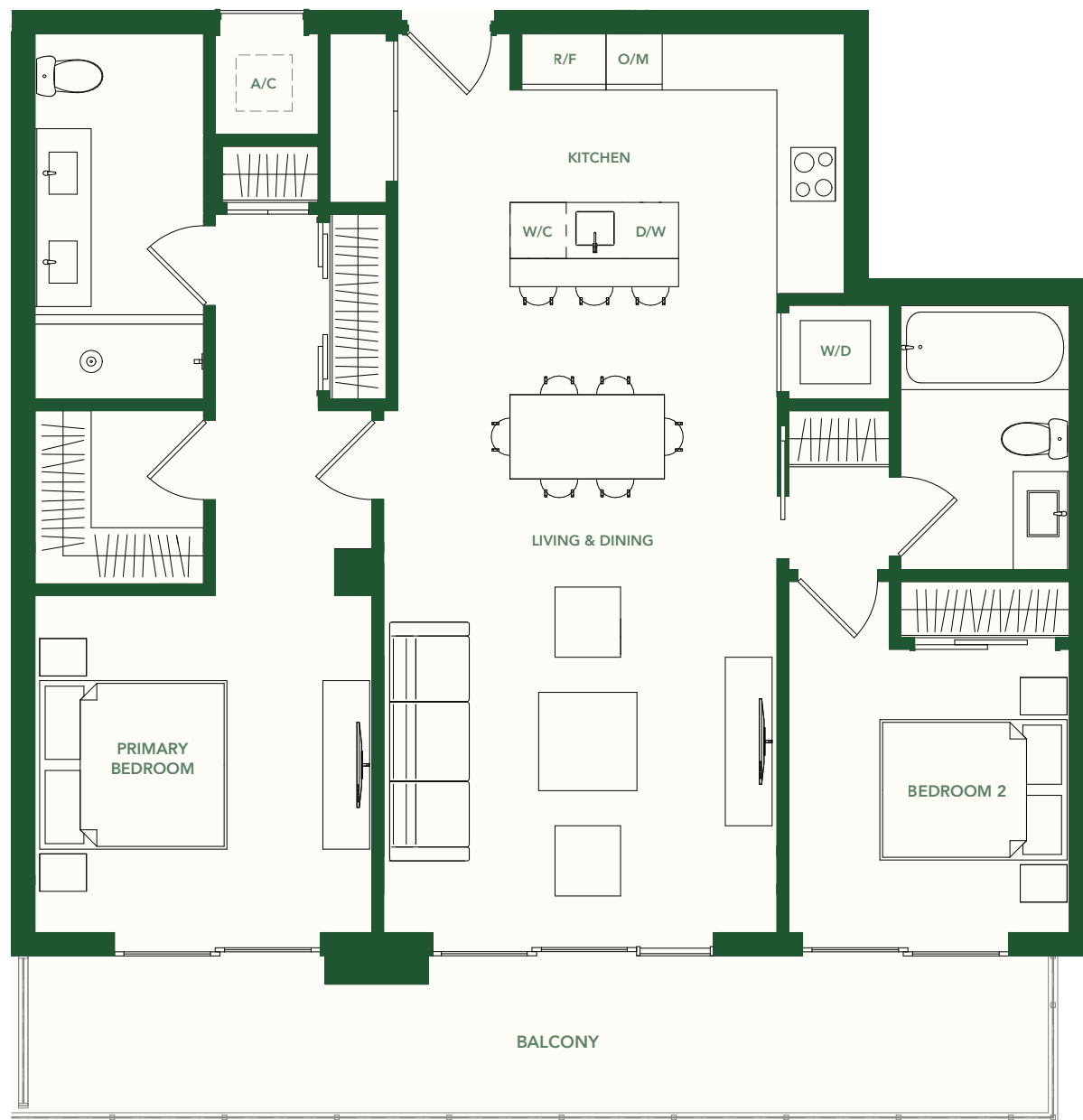
INTERIOR 1,187 SF / 110 M²

BALCONY 215 SF / 20 M²

TOTAL 1,402 SF / 130 M²



BRICKELL AVE.



These drawings are conceptual only and are for the convenience of reference. They should not be relied upon as representations, express or implied, of the final detail of the residences. Units shown are examples of unit types and may not depict actual units. Stated square footages are ranges for a particular unit type and are measured to the exterior boundaries of the exterior walls and the centerline of interior demising walls and in fact vary from the area that would be determined by using the description and definition of the unit set forth in the declaration (which generally only includes the interior airspace between the perimeter walls and excludes interior structural components). Note that measurements of rooms set forth on this floorplan are generally taken at the greatest points of each given room (as if the room were a perfect rectangle), without regard for any cutouts. Accordingly, the area of the actual room will typically be smaller than the product obtained by multiplying the stated length times width. All dimensions are approximate and may vary with actual construction, and all floor plans and development plans are subject to change.

ARIA LARGO **PLACE**
DEVELOPER/BUILDER PROJECTS

2200
BRICKELL

TYPE D

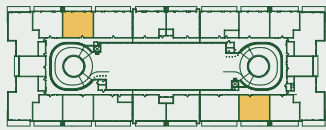
UNITS 03, 20

2 BEDROOMS

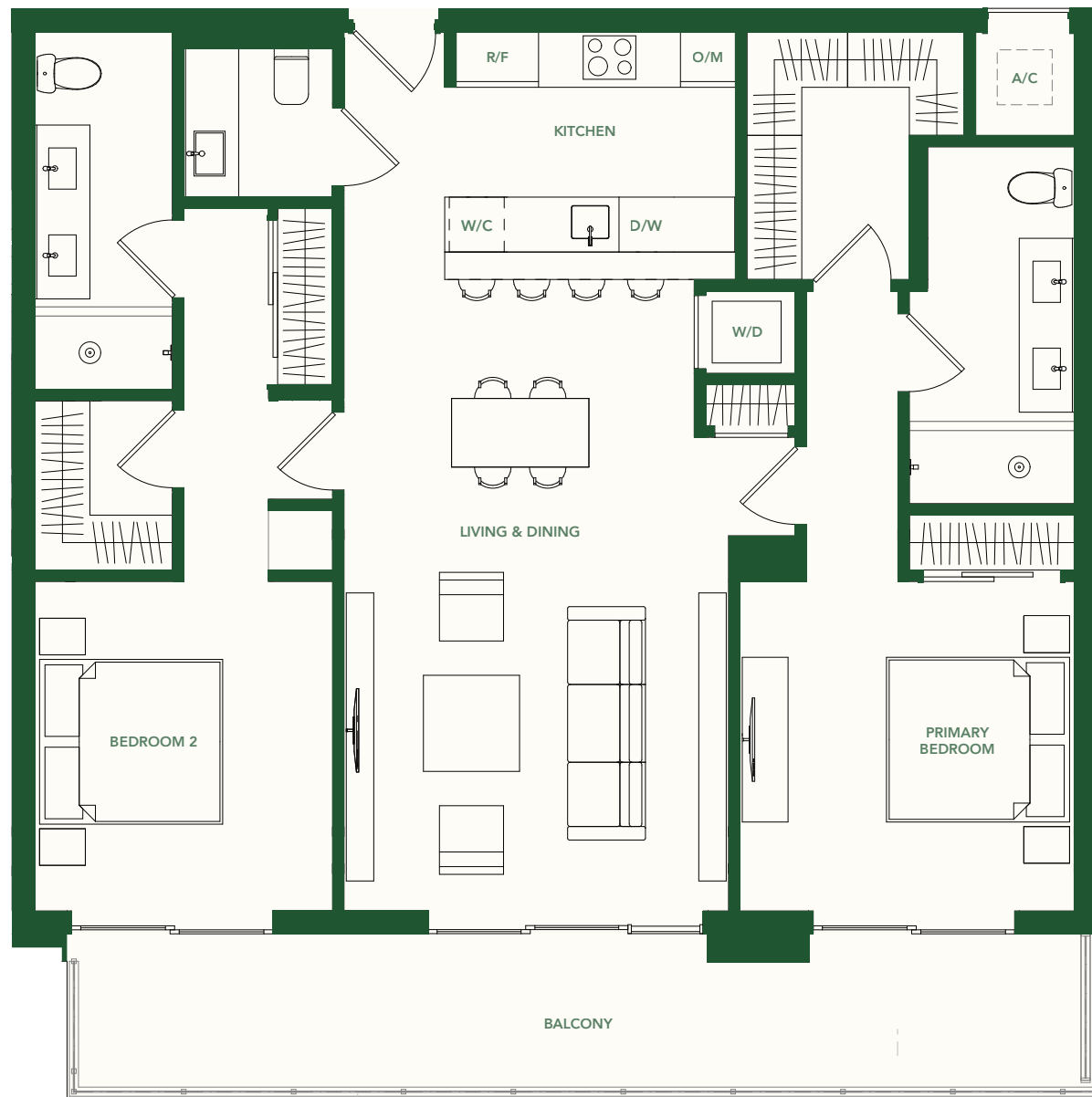
2.5 BATHROOMS

LEVEL 2 – 5

INTERIOR	1,302 SF / 121 M ²
BALCONY	209 SF / 19 M ²
TOTAL	1,511 SF / 140 M ²



BRICKELL AVE.



These drawings are conceptual only and are for the convenience of reference. They should not be relied upon as representations, express or implied, of the final detail of the residences. Units shown are examples of unit types and may not depict actual units. Stated square footages are ranges for a particular unit type and are measured to the exterior boundaries of the exterior walls and the centerline of interior demising walls and in fact vary from the area that would be determined by using the description and definition of the unit set forth in the declaration (which generally only includes the interior airspace between the perimeter walls and excludes interior structural components). Note that measurements of rooms set forth on this floorplan are generally taken at the greatest points of each given room (as if the room were a perfect rectangle), without regards for any cutouts. Accordingly, the area of the actual room will typically be smaller than the product obtained by multiplying the stated length times width. All dimensions are approximate and may vary with actual construction, and all floor plans and development plans are subject to change.

ARIA LARGO **PLA**
DEVELOPER/BUILDER PROJECTS

2200
BRICKELL

TYPE E

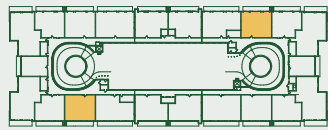
UNITS 09, 14

2 BEDROOMS + DEN

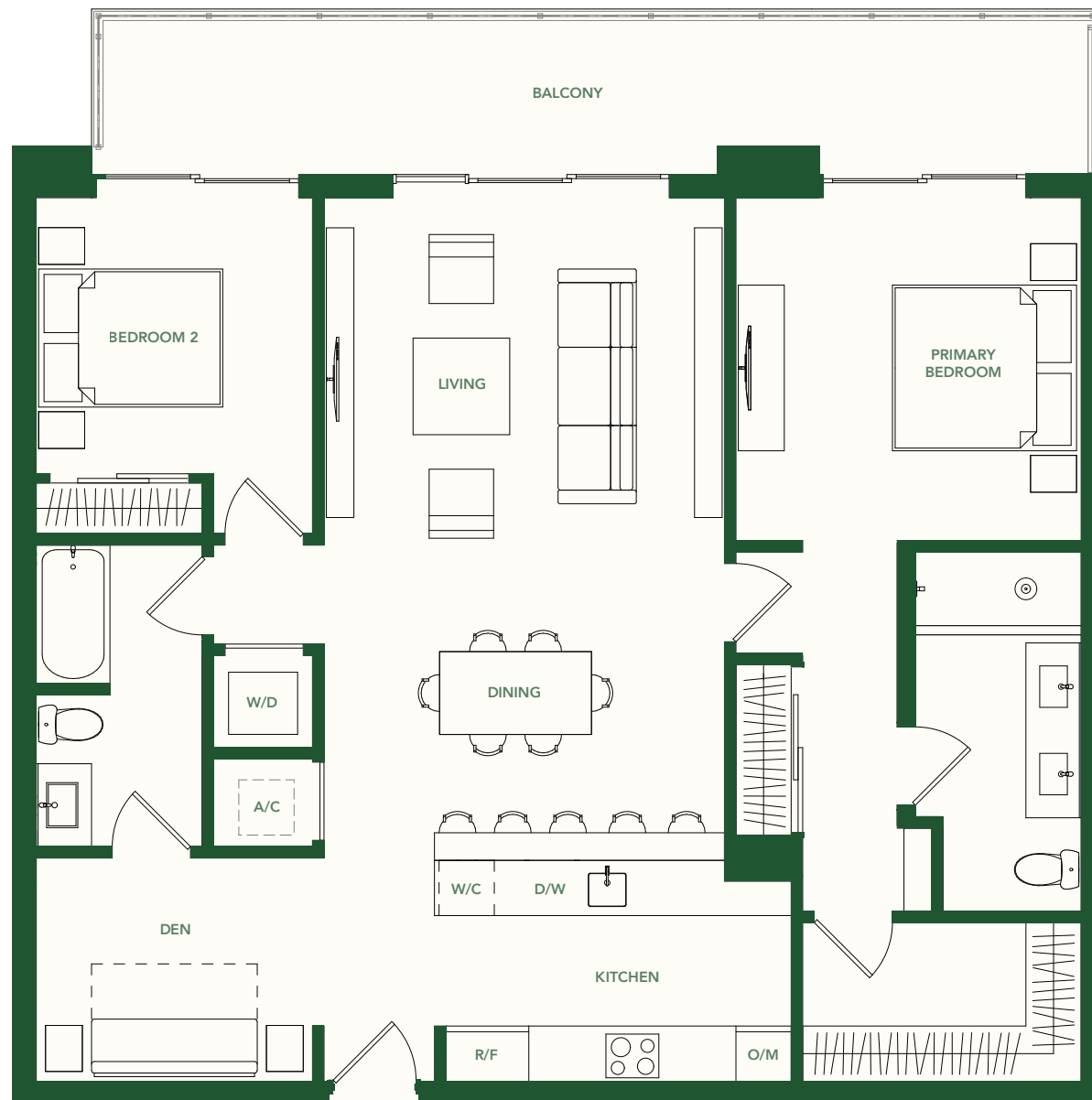
2 BATHROOMS

LEVELS 2 - 5

INTERIOR	1,302 SF / 121 M ²
BALCONY	213 SF / 20 M ²
TOTAL	1,515 SF / 141 M ²



BRICKELL AVE.



These drawings are conceptual only and are for the convenience of reference. They should not be relied upon as representations, express or implied, of the final detail of the residences. Units shown are examples of unit types and may not depict actual units. Stated square footages are ranges for a particular unit type and are measured to the exterior boundaries of the exterior walls and the centerline of interior demising walls and in fact vary from the area that would be determined by using the description and definition of the unit set forth in the declaration (which generally only includes the interior airspace between the perimeter walls and excludes interior structural components). Note that measurements of rooms set forth on this floorplan are generally taken at the greatest points of each given room (as if the room were a perfect rectangle), without regard for any cutouts. Accordingly, the area of the actual room will typically be smaller than the product obtained by multiplying the stated length times width. All dimensions are approximate and may vary with actual construction, and all floor plans and development plans are subject to change.

ARIA LARGO **PLACE**
DEVELOPER/BUILDER PROJECTS

2200 BRICKELL

TYPE F

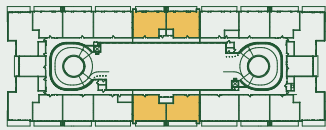
UNITS 01, 11, 12, 22

2 BEDROOMS + DEN

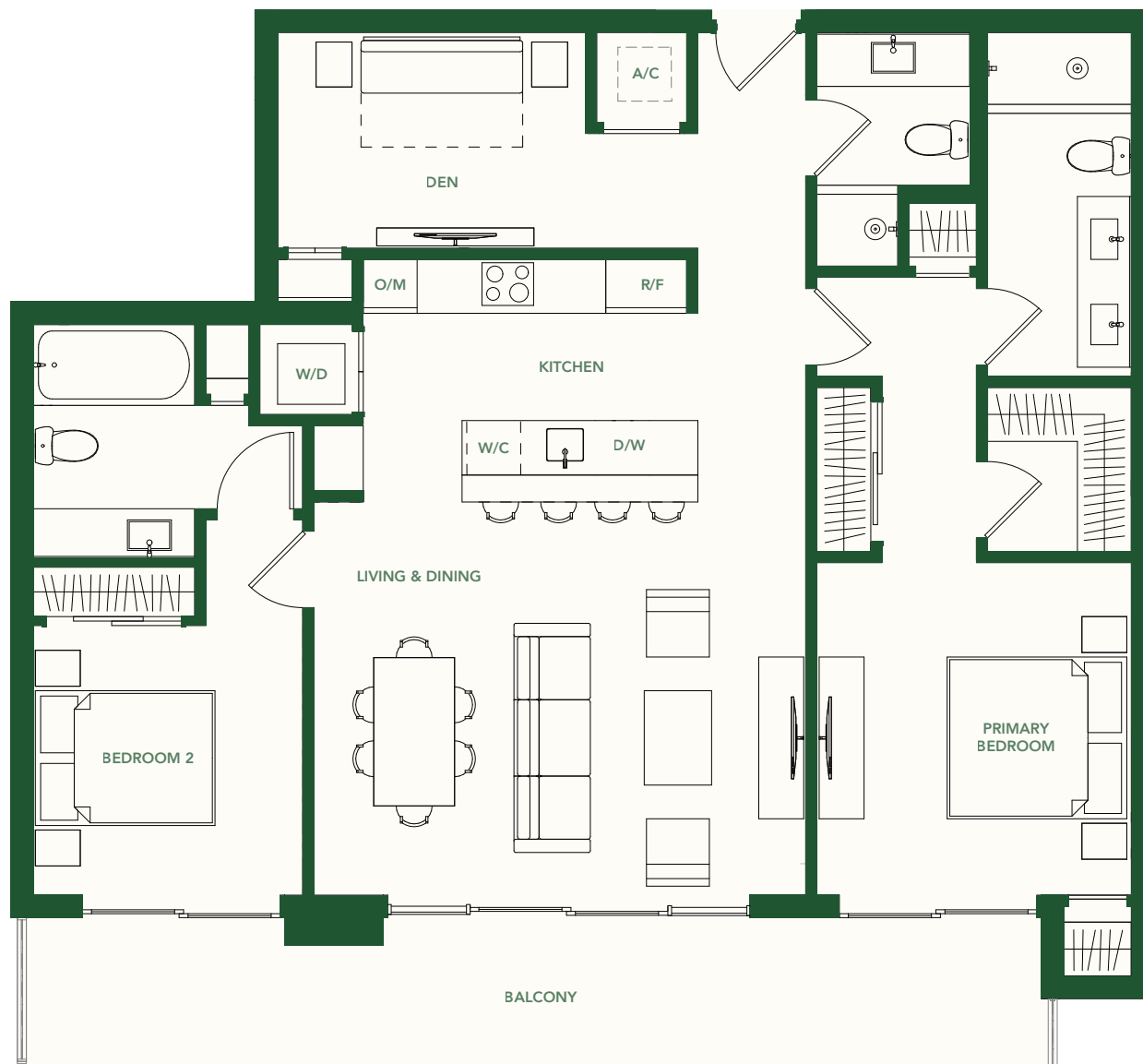
3 BATHROOMS

LEVELS 2 – 5

INTERIOR	1,317 SF / 122 M ²
BALCONY	210 SF / 20 M ²
TOTAL	1,527 SF / 142 M ²



BRICKELL AVE.



These drawings are conceptual only and are for the convenience of reference. They should not be relied upon as representations, express or implied, of the final detail of the residences. Units shown are examples of unit types and may not depict actual units. Stated square footages are ranges for a particular unit type and are measured to the exterior boundaries of the exterior walls and the centerline of interior demising walls and in fact vary from the area that would be determined by using the description and definition of the unit set forth in the declaration (which generally only includes the interior airspace between the perimeter walls and excludes interior structural components). Note that measurements of rooms set forth on this floorplan are generally taken at the greatest points of each given room (as if the room were a perfect rectangle), without regards for any cutouts. Accordingly, the area of the actual room will typically be smaller than the product obtained by multiplying the stated length times width. All dimensions are approximate and may vary with actual construction, and all floor plans and development plans are subject to change.

ARIA LARGO **PLACE**
DEVELOPER/BUILDER PROJECTS

2200 BRICKELL

TYPE G

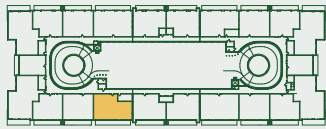
UNITS 13

3 BEDROOMS

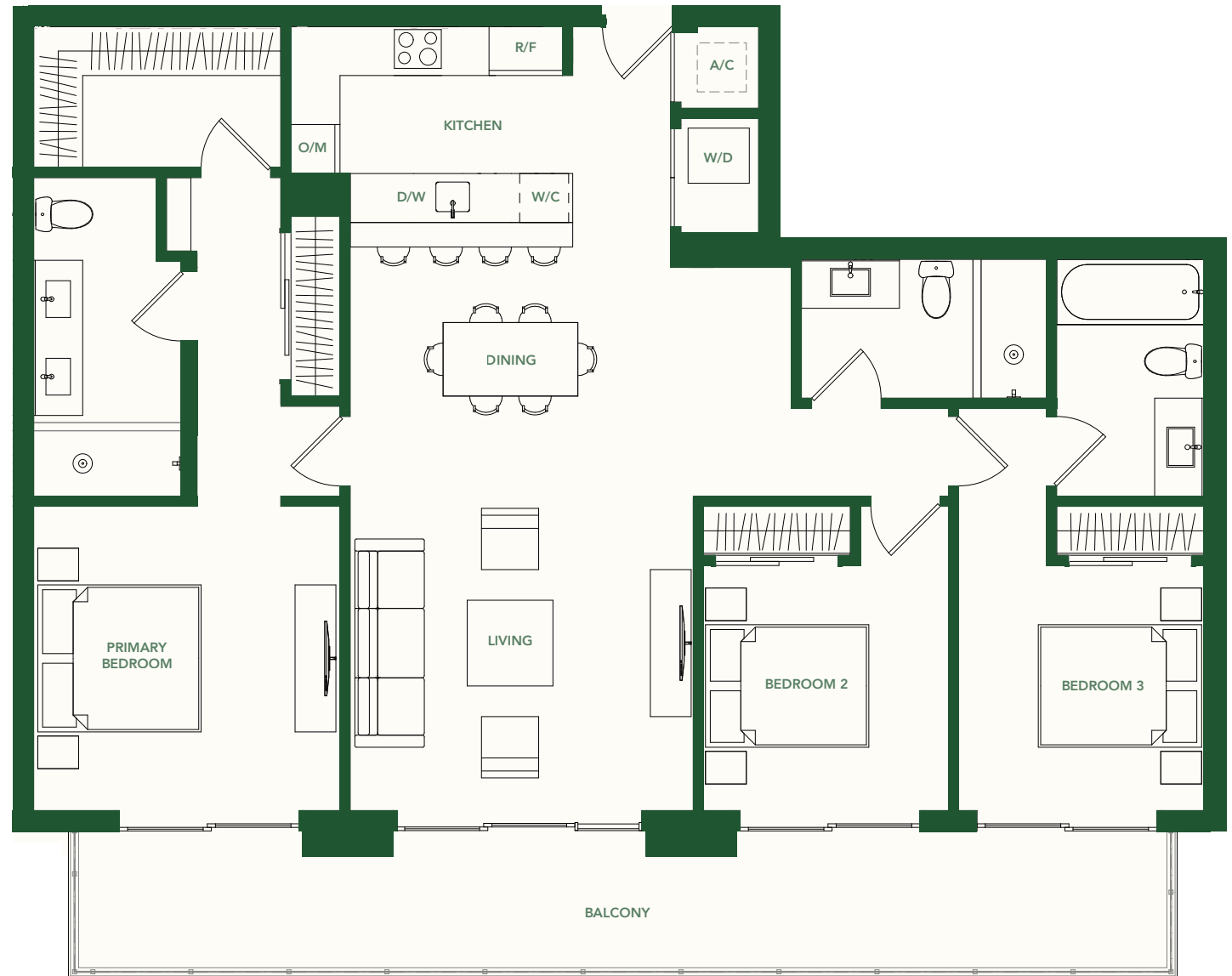
3 BATHROOMS

LEVELS 2 – 5

INTERIOR	1,470 SF / 137 M ²
BALCONY	256 SF / 24 M ²
TOTAL	1,726 SF / 161 M ²



BRICKELL AVE.



These drawings are conceptual only and are for the convenience of reference. They should not be relied upon as representations, express or implied, of the final detail of the residences. Units shown are examples of unit types and may not depict actual units. Stated square footages are ranges for a particular unit type and are measured to the exterior boundaries of the exterior walls and the centerline of interior demising walls and in fact vary from the area that would be determined by using the description and definition of the unit set forth in the declaration (which generally only includes the interior airspace between the perimeter walls and excludes interior structural components). Note that measurements of rooms set forth on this floorplan are generally taken at the greatest points of each given room (as if the room were a perfect rectangle), without regards for any cutouts. Accordingly, the area of the actual room will typically be smaller than the product obtained by multiplying the stated length times width. All dimensions are approximate and may vary with actual construction, and all floor plans and development plans are subject to change.

ARIA LARGO **PLA**
DEVELOPER/BUILDER PROJECTS

2200 BRICKELL

TYPE H

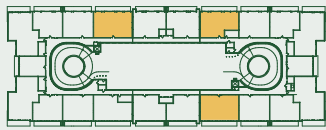
UNITS 02, 10, 21

3 BEDROOMS + DEN

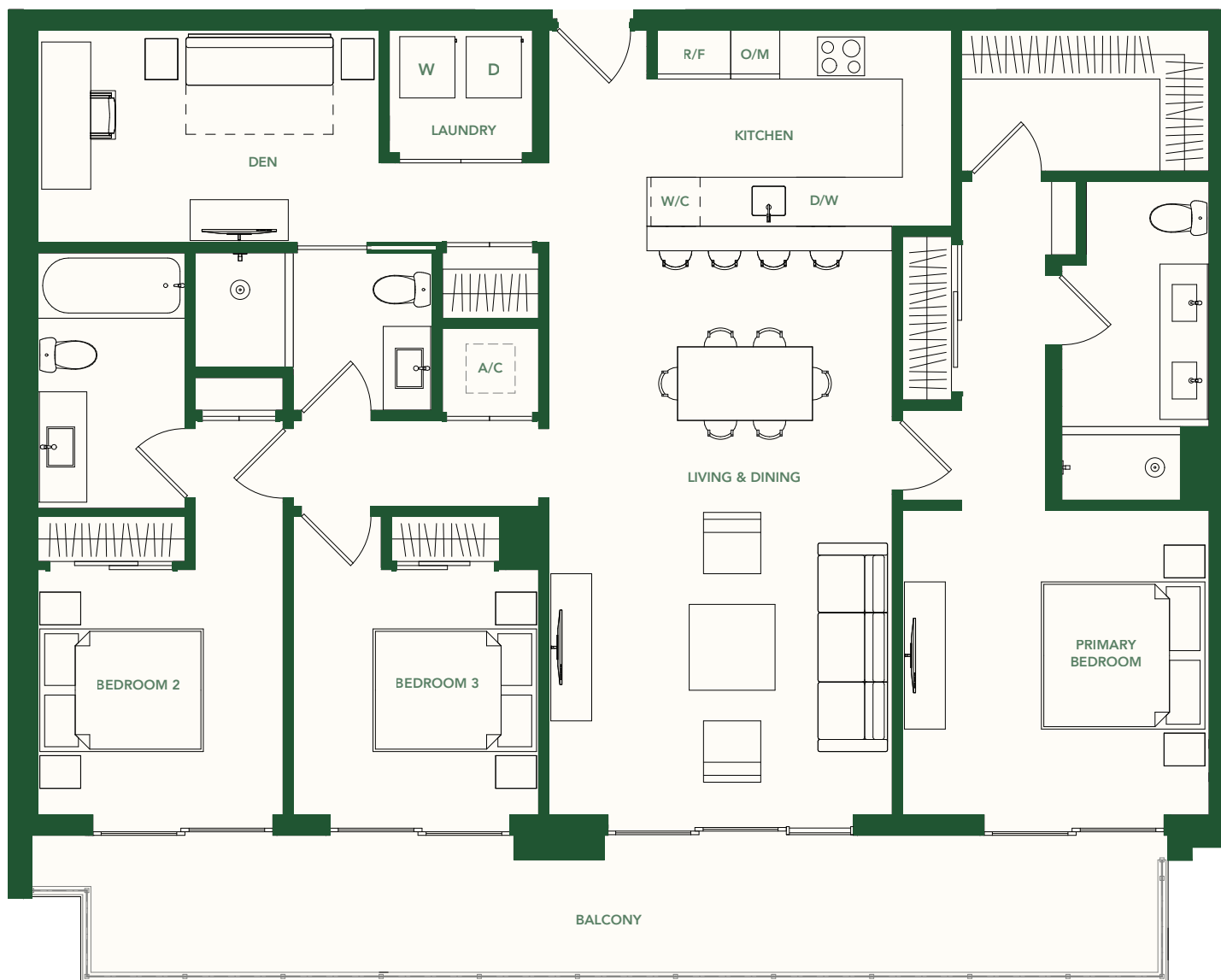
3 BATHROOMS

LEVELS 2 – 5

INTERIOR	1,641 SF / 152 M ²
BALCONY	259 SF / 24 M ²
TOTAL	1,900 SF / 176 M ²



BRICKELL AVE.



These drawings are conceptual only and are for the convenience of reference. They should not be relied upon as representations, express or implied, of the final detail of the residences. Units shown are examples of unit types and may not depict actual units. Stated square footages are ranges for a particular unit type and are measured to the exterior boundaries of the exterior walls and the centerline of interior demising walls and in fact vary from the area that would be determined by using the description and definition of the unit set forth in the declaration (which generally only includes the interior airspace between the perimeter walls and excludes interior structural components). Note that measurements of rooms set forth on this floorplan are generally taken at the greatest points of each given room (as if the room were a perfect rectangle), without regard for any cutouts. Accordingly, the area of the actual room will typically be smaller than the product obtained by multiplying the stated length times width. All dimensions are approximate and may vary with actual construction, and all floor plans and development plans are subject to change.

ARIA **LARGO** **PLA**
DEVELOPER/BUILDER PROJECTS

2200
BRICKELL

TYPE J

UNITS 05, 07, 16, 18

3 BEDROOMS + DEN

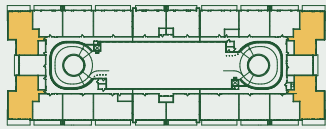
3.5 BATHROOMS

LEVELS 2 – 5

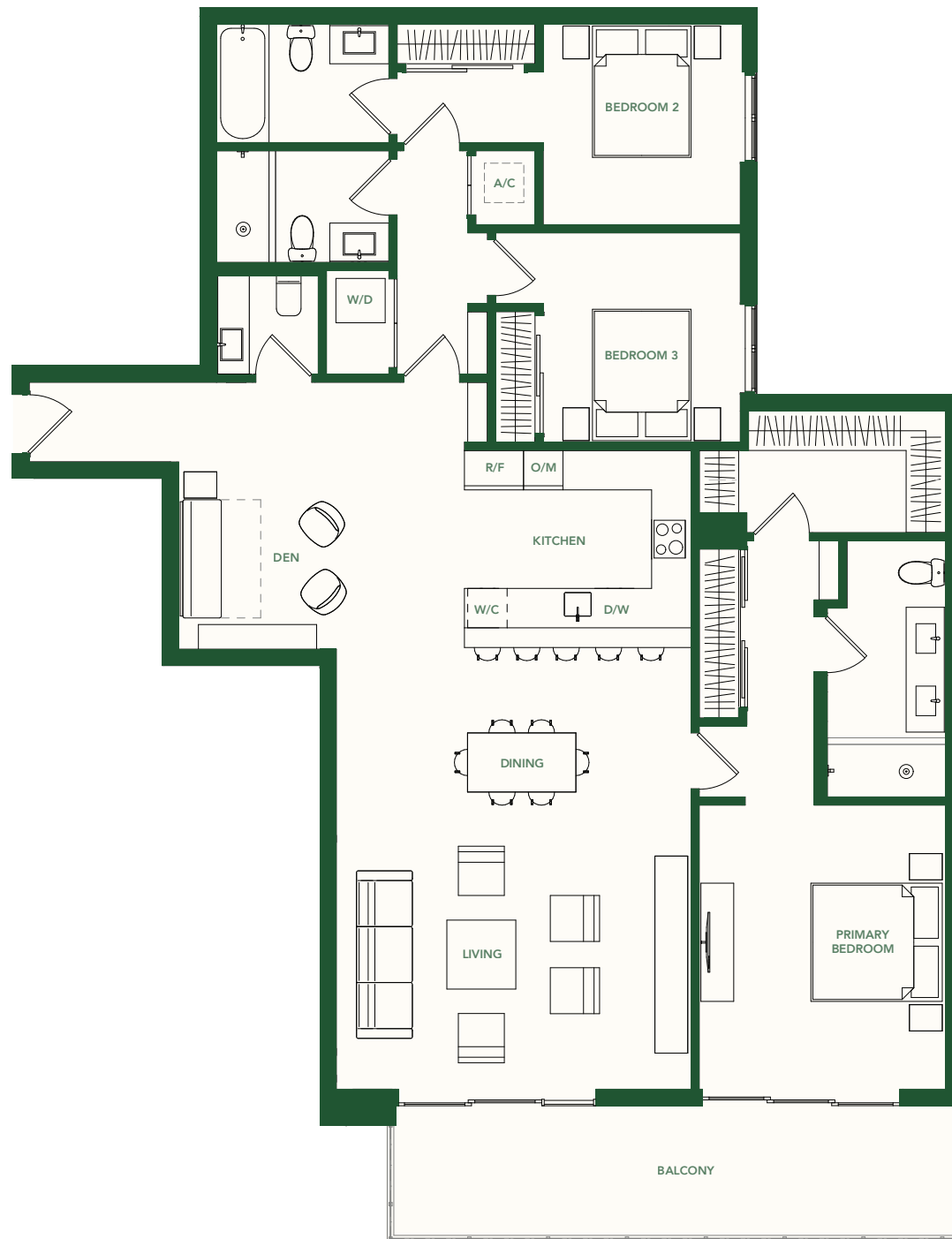
INTERIOR 1,819 SF / 169 M²

BALCONY 182 SF / 17 M²

TOTAL 2,001 SF / 186 M²



BRICKELL AVE.



These drawings are conceptual only and are for the convenience of reference. They should not be relied upon as representations, express or implied, of the final detail of the residences. Units shown are examples of unit types and may not depict actual units. Stated square footages are ranges for a particular unit type and are measured to the exterior boundaries of the exterior walls and the centerline of interior demising walls and in fact vary from the area that would be determined by using the description and definition of the unit set forth in the declaration (which generally only includes the interior airspace between the perimeter walls and excludes interior structural components). Note that measurements of rooms set forth on this floorplan are generally taken at the greatest points of each given room (as if the room were a perfect rectangle), without regards for any cutouts. Accordingly, the area of the actual room will typically be smaller than the product obtained by multiplying the stated length times width. All dimensions are approximate and may vary with actual construction, and all floor plans and development plans are subject to change.

ARIA LARGO **PLACE**
DEVELOPER/BUILDER PROJECTS

2200
BRICKELL

TYPE K

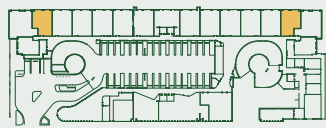
GARDEN VILLAS 103, 115

2 BEDROOMS

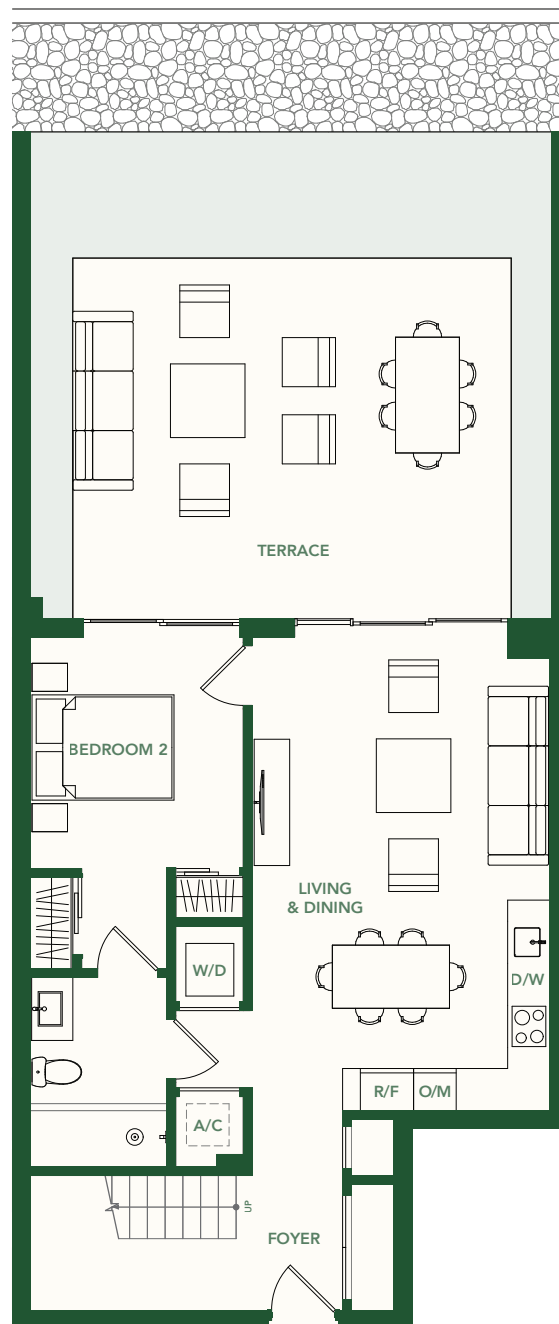
2 BATHROOMS

GROUND LEVEL

INTERIOR	1,233 SF / 115 M ²
TERRACE	353 SF / 33 M ²
TOTAL	1,586 SF / 148 M ²

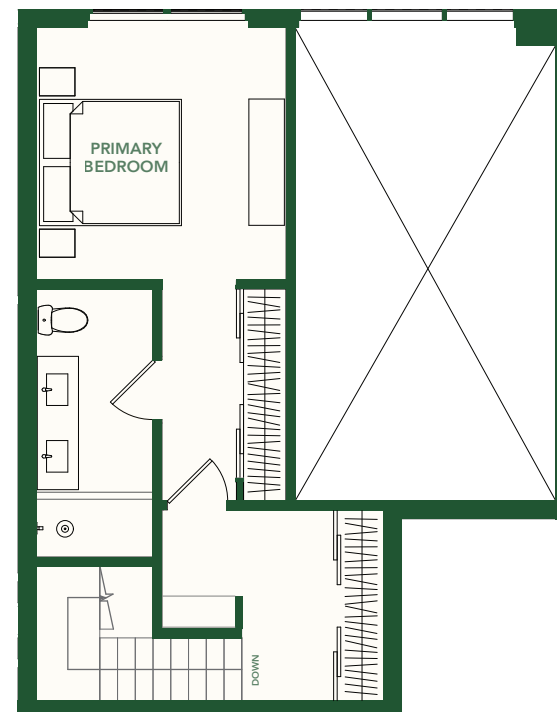


BRICKELL AVE.



GROUND LEVEL

Interior - 762 SF / 71 M²



SECOND LEVEL

Interior - 471 SF / 44 M²



These drawings are conceptual only and are for the convenience of reference. They should not be relied upon as representations, express or implied, of the final detail of the residences. Units shown are examples of unit types and may not depict actual units. Stated square footages are ranges for a particular unit type and are measured to the exterior boundaries of the exterior walls and the centerline of interior demising walls and in fact vary from the area that would be determined by using the description and definition of the unit set forth in the declaration (which generally only includes the interior airspace between the perimeter walls and excludes interior structural components). Note that measurements of rooms set forth on this floorplan are generally taken at the greatest points of each given room (as if the room were a perfect rectangle), without regard for any cutouts. Accordingly, the area of the actual room will typically be smaller than the product obtained by multiplying the stated length times width. All dimensions are approximate and may vary with actual construction, and all floor plans and development plans are subject to change.

ARIA LARGO **PLACE**
DEVELOPER/BUILDER PROJECTS

2200 BRICKELL

TYPE M

GARDEN VILLAS 106, 112

2 BEDROOMS + DEN + OFFICE

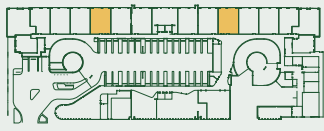
2.5 BATHROOMS

GROUND LEVEL

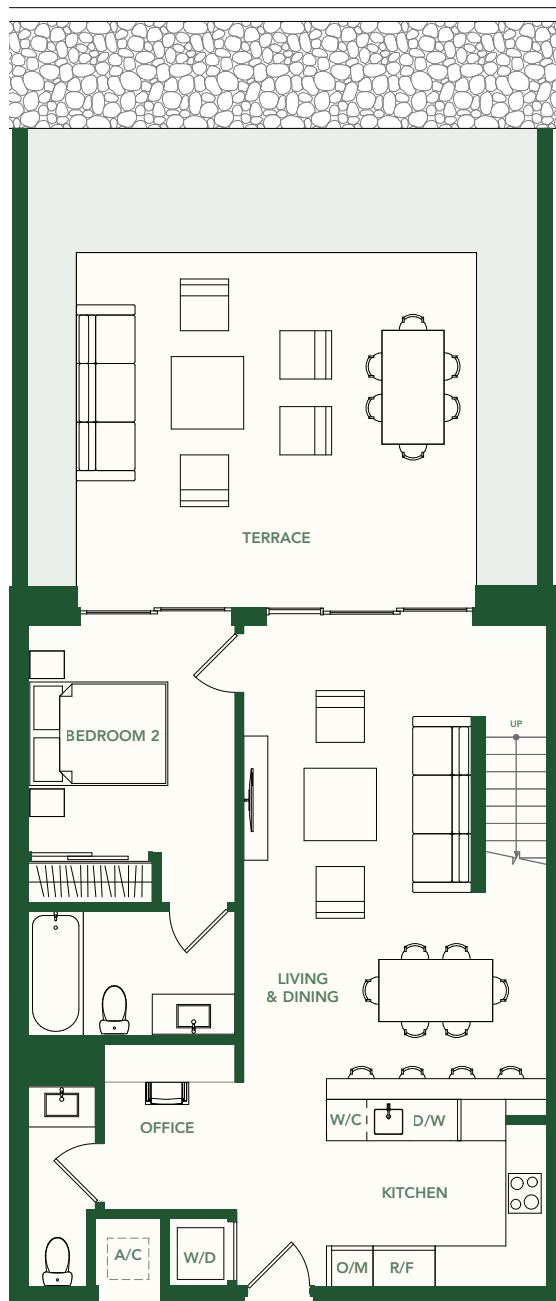
INTERIOR 1,458 SF / 135 M²

TERRACE 391 SF / 36 M²

TOTAL 1,849 SF / 171 M²

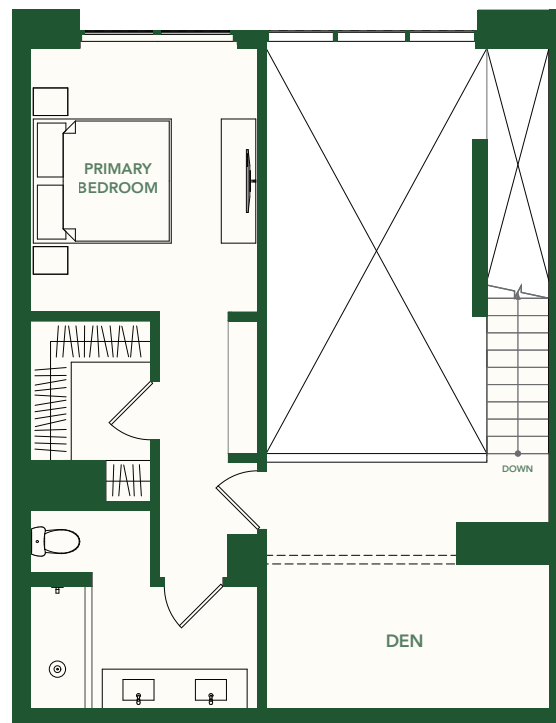


BRICKELL AVE.



GROUND LEVEL

Interior - 873 SF / 81 M²



SECOND LEVEL

Interior - 585 SF / 54 M²



These drawings are conceptual only and are for the convenience of reference. They should not be relied upon as representations, express or implied, of the final detail of the residences. Units shown are examples of unit types and may not depict actual units. Stated square footages are ranges for a particular unit type and are measured to the exterior boundaries of the exterior walls and the centerline of interior demising walls and in fact vary from the area that would be determined by using the description and definition of the unit set forth in the declaration (which generally only includes the interior airspace between the perimeter walls and excludes interior structural components). Note that measurements of rooms set forth on this floorplan are generally taken at the greatest points of each given room (as if the room were a perfect rectangle), without regards for any cutouts. Accordingly, the area of the actual room will typically be smaller than the product obtained by multiplying the stated length times width. All dimensions are approximate and may vary with actual construction, and all floor plans and development plans are subject to change.

ARIA LARGO **PLACE**
DEVELOPER/BUILDER PROJECTS

2200 BRICKELL

TYPE L

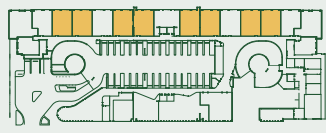
GARDEN VILLAS 104, 105, 107,
108, 110, 111, 113, 114

2 BEDROOMS + OFFICE

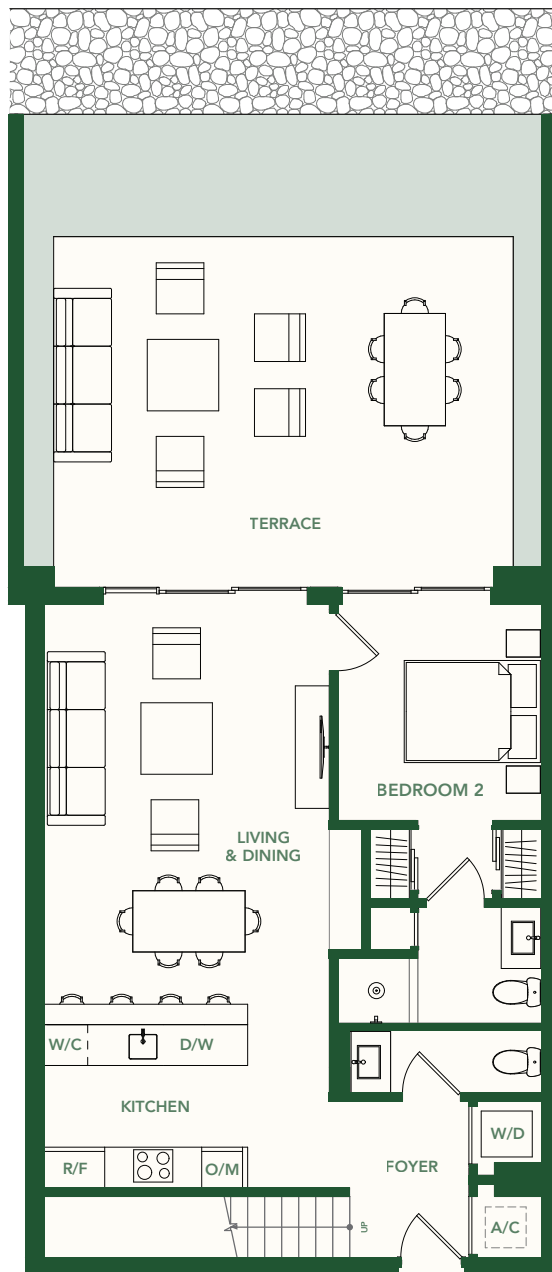
2.5 BATHROOMS

GROUND LEVEL

INTERIOR	1,426 SF / 133 M ²
TERRACE	388 SF / 36 M ²
TOTAL	1,814 SF / 169 M ²

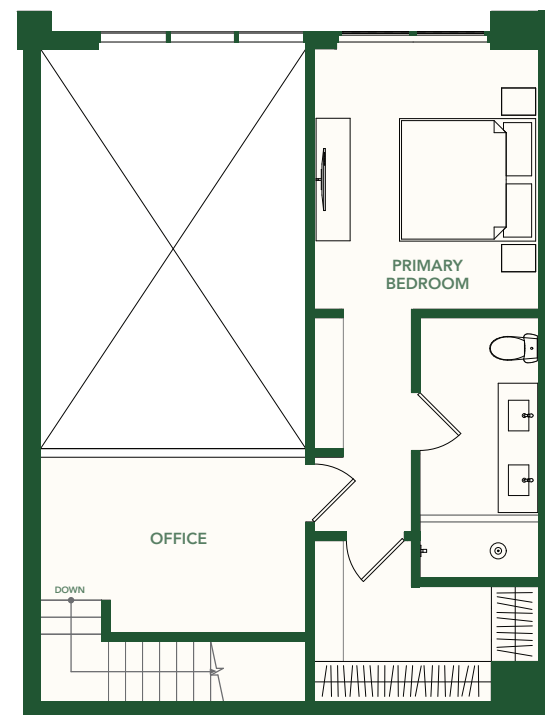


BRICKELL AVE.



GROUND LEVEL

Interior - 850 SF / 79 M²



SECOND LEVEL

Interior - 576 SF / 54 M²



These drawings are conceptual only and are for the convenience of reference. They should not be relied upon as representations, express or implied, of the final detail of the residences. Units shown are examples of unit types and may not depict actual units. Stated square footages are ranges for a particular unit type and are measured to the exterior boundaries of the exterior walls and the centerline of interior demising walls and in fact vary from the area that would be determined by using the description and definition of the unit set forth in the declaration (which generally only includes the interior airspace between the perimeter walls and excludes interior structural components). Note that measurements of rooms set forth on this floorplan are generally taken at the greatest points of each given room (as if the room were a perfect rectangle), without regard for any cutouts. Accordingly, the area of the actual room will typically be smaller than the product obtained by multiplying the stated length times width. All dimensions are approximate and may vary with actual construction, and all floor plans and development plans are subject to change.

ARIA **LARGO** **PLACE**
DEVELOPER/BUILDER PROJECTS

2200 BRICKELL

TYPE N

GARDEN VILLA 109

2 BEDROOMS + OFFICE

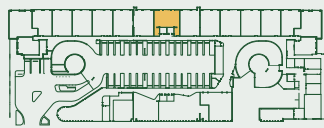
2.5 BATHROOMS

GROUND LEVEL

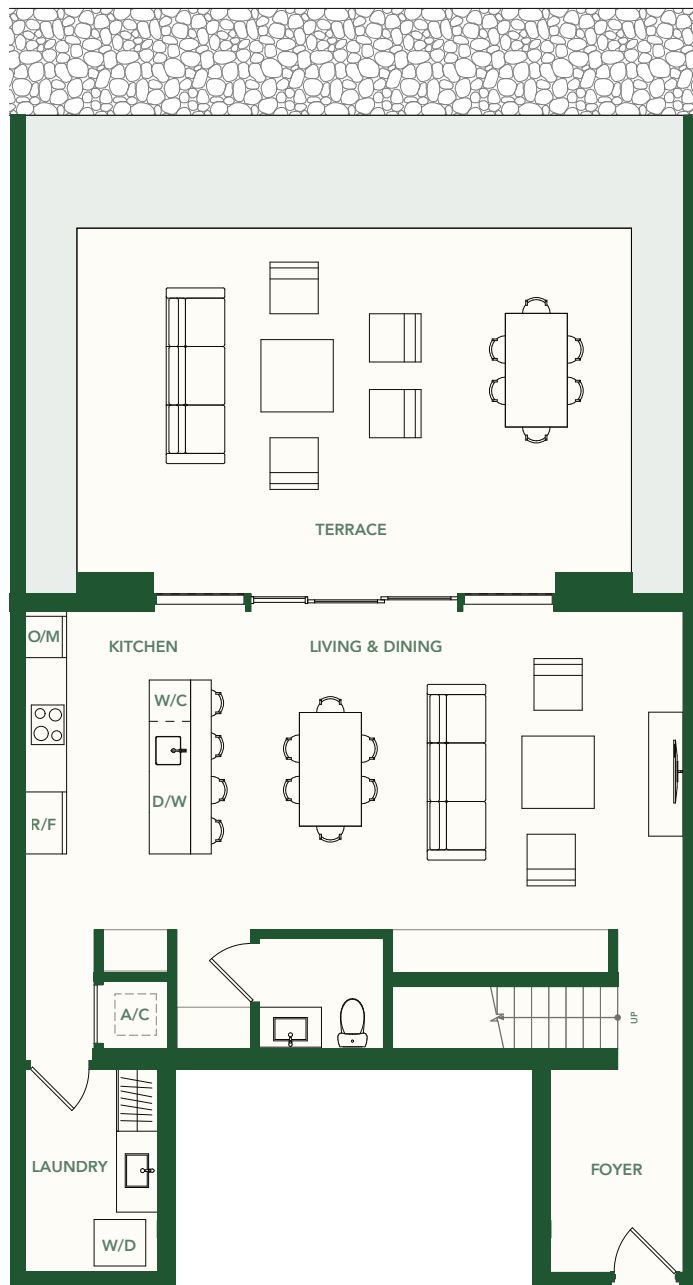
INTERIOR 1,793 SF / 167 M²

TERRACE 468 SF / 44 M²

TOTAL 2,261 SF / 211 M²



BRICKELL AVE.



GROUND LEVEL

Interior - 899 SF / 84 M²



SECOND LEVEL

Interior - 894 SF / 83 M²



These drawings are conceptual only and are for the convenience of reference. They should not be relied upon as representations, express or implied, of the final detail of the residences. Units shown are examples of unit types and may not depict actual units. Stated square footages are ranges for a particular unit type and are measured to the exterior boundaries of the exterior walls and the centerline of interior demising walls and in fact vary from the area that would be determined by using the description and definition of the unit set forth in the declaration (which generally only includes the interior airspace between the perimeter walls and excludes interior structural components). Note that measurements of rooms set forth on this floorplan are generally taken at the greatest points of each given room (as if the room were a perfect rectangle), without regard for any cutouts. Accordingly, the area of the actual room will typically be smaller than the product obtained by multiplying the stated length times width. All dimensions are approximate and may vary with actual construction, and all floor plans and development plans are subject to change.

ARIA LARGO **PLA**
DEVELOPER/BUILDER PROJECTS

2200
BRICKELL

TYPE O

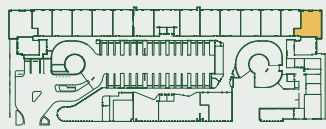
GARDEN VILLA 102

4 BEDROOMS

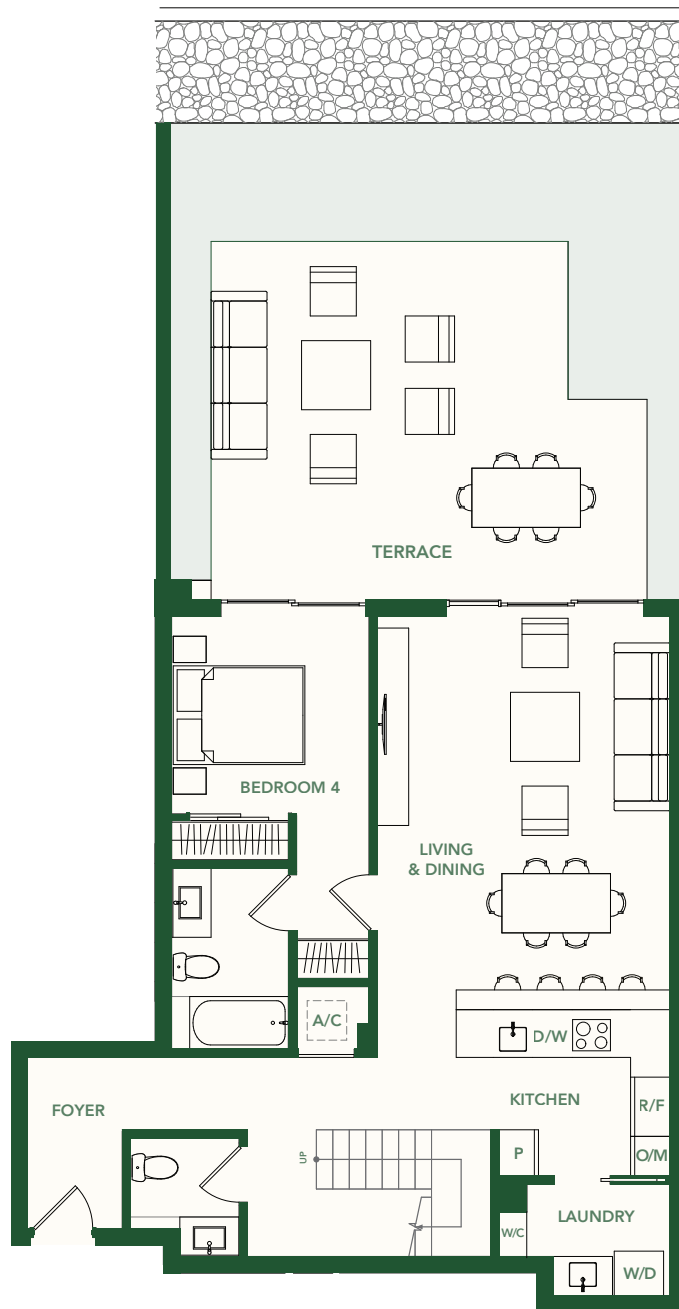
3.5 BATHROOMS

GROUND LEVEL

INTERIOR	1,973 SF / 183 M ²
TERRACE	459 SF / 43 M ²
TOTAL	2,432 SF / 226 M ²



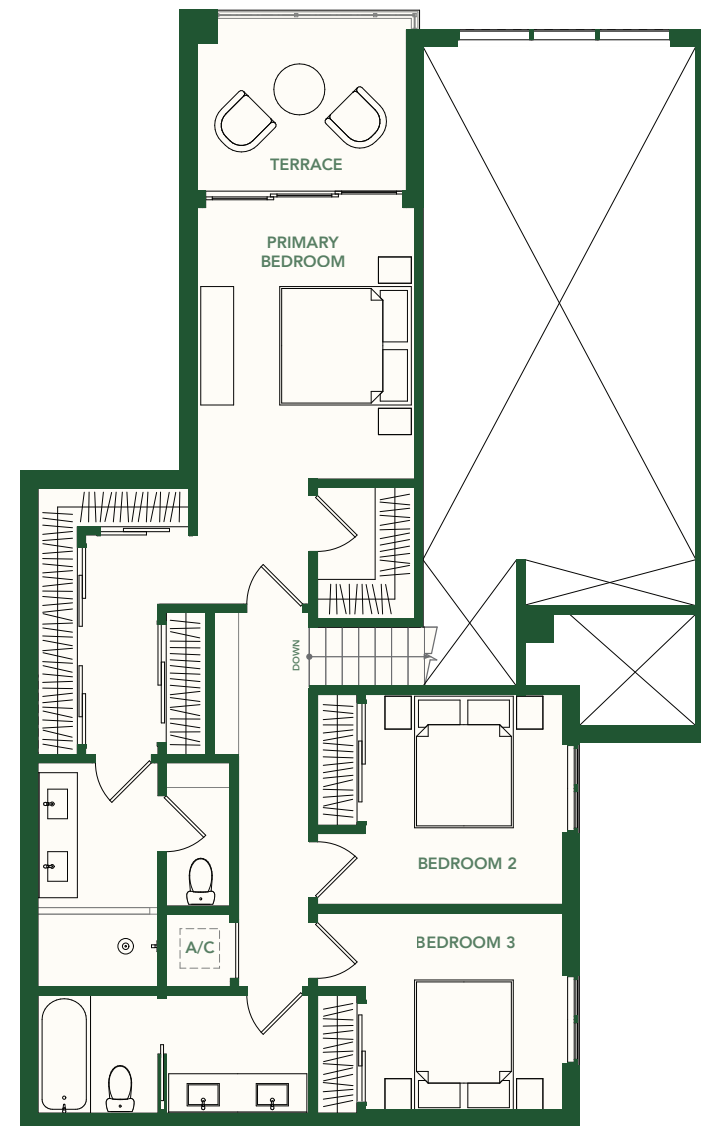
BRICKELL AVE.



GROUND LEVEL

Interior - 996 SF / 93 M²

Terrace - 368 SF / 34 M²



SECOND LEVEL

Interior - 977 SF / 91 M²

Terrace - 91 SF / 9 M²



These drawings are conceptual only and are for the convenience of reference. They should not be relied upon as representations, express or implied, of the final detail of the residences. Units shown are examples of unit types and may not depict actual units. Stated square footages are ranges for a particular unit type and are measured to the exterior boundaries of the exterior walls and the centerline of interior demising walls and in fact vary from the area that would be determined by using the description and definition of the unit set forth in the declaration (which generally only includes the interior airspace between the perimeter walls and excludes interior structural components). Note that measurements of rooms set forth on this floorplan are generally taken at the greatest points of each given room (as if the room were a perfect rectangle), without regards for any cutouts. Accordingly, the area of the actual room will typically be smaller than the product obtained by multiplying the stated length times width. All dimensions are approximate and may vary with actual construction, and all floor plans and development plans are subject to change.



2200 BRICKELL

TYPE P

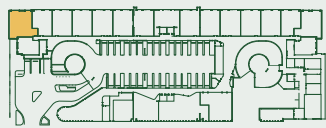
GARDEN VILLA 116

4 BEDROOMS

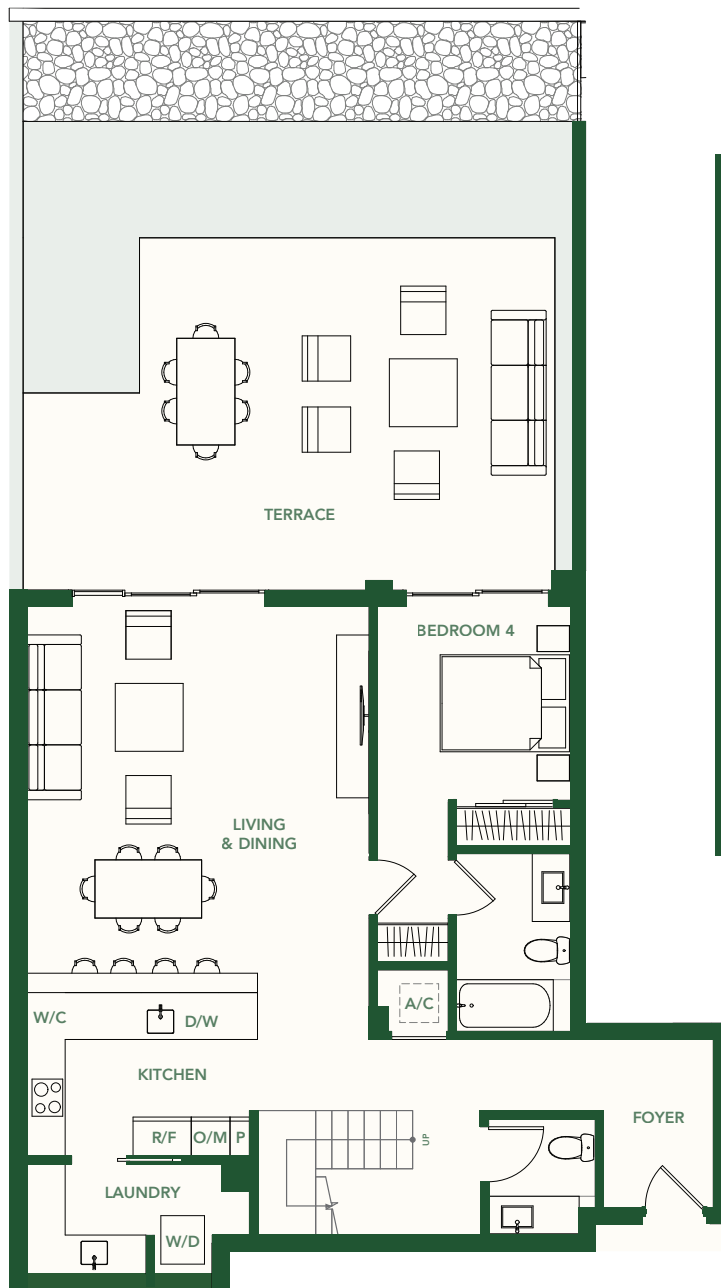
3.5 BATHROOMS

GROUND LEVEL

INTERIOR	2,069 SF / 192 M ²
TERRACE	540 SF / 50 M ²
TOTAL	2,609 SF / 242 M ²



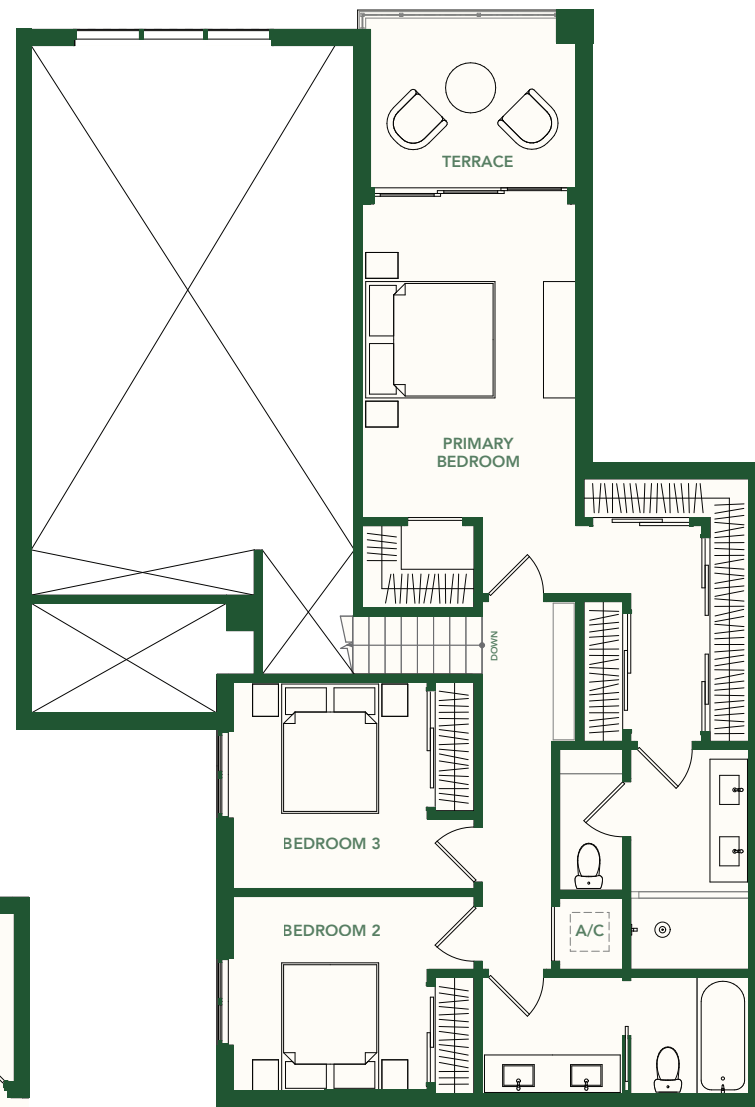
BRICKELL AVE.



GROUND LEVEL

Interior - 1,086 SF / 101 M²

Terrace - 449 SF / 42 M²



SECOND LEVEL

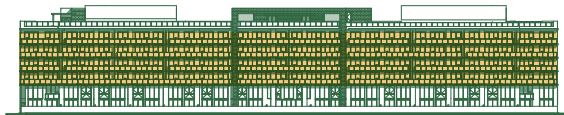
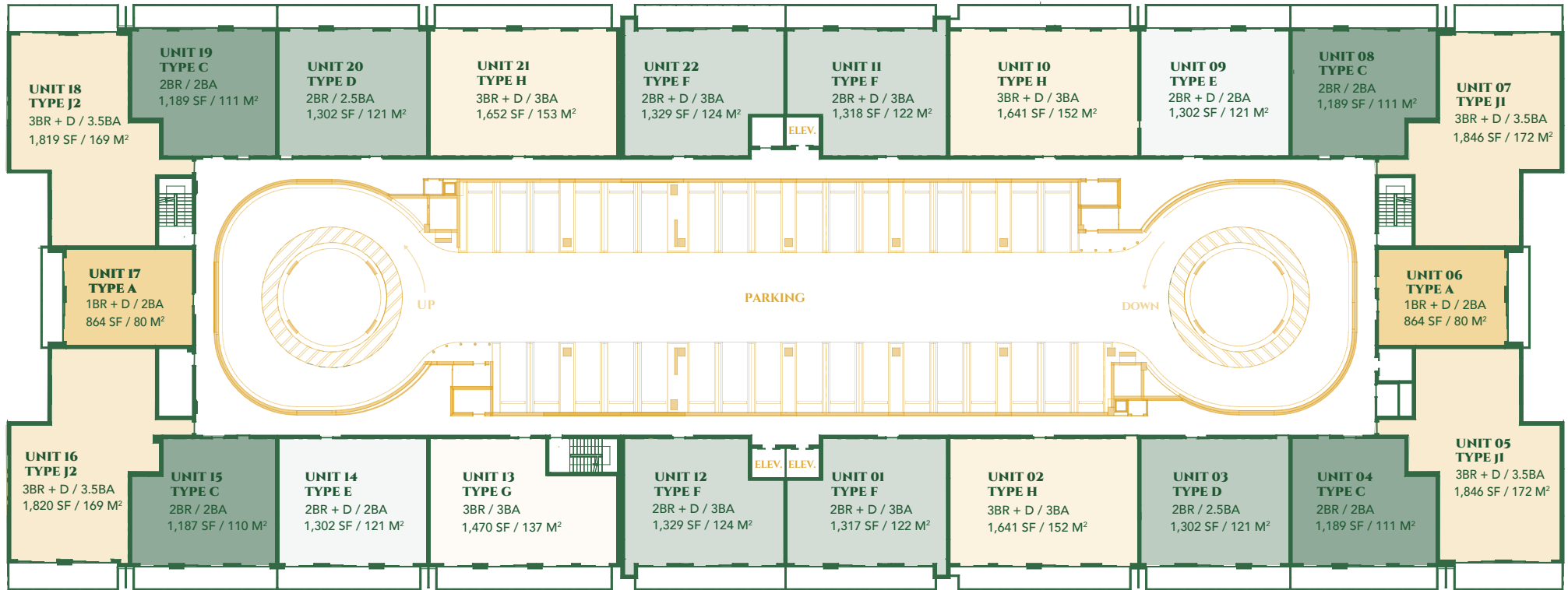
Interior - 983 SF / 91 M²

Terrace - 91 SF / 9 M²



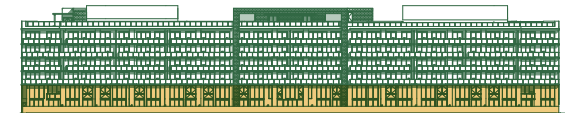
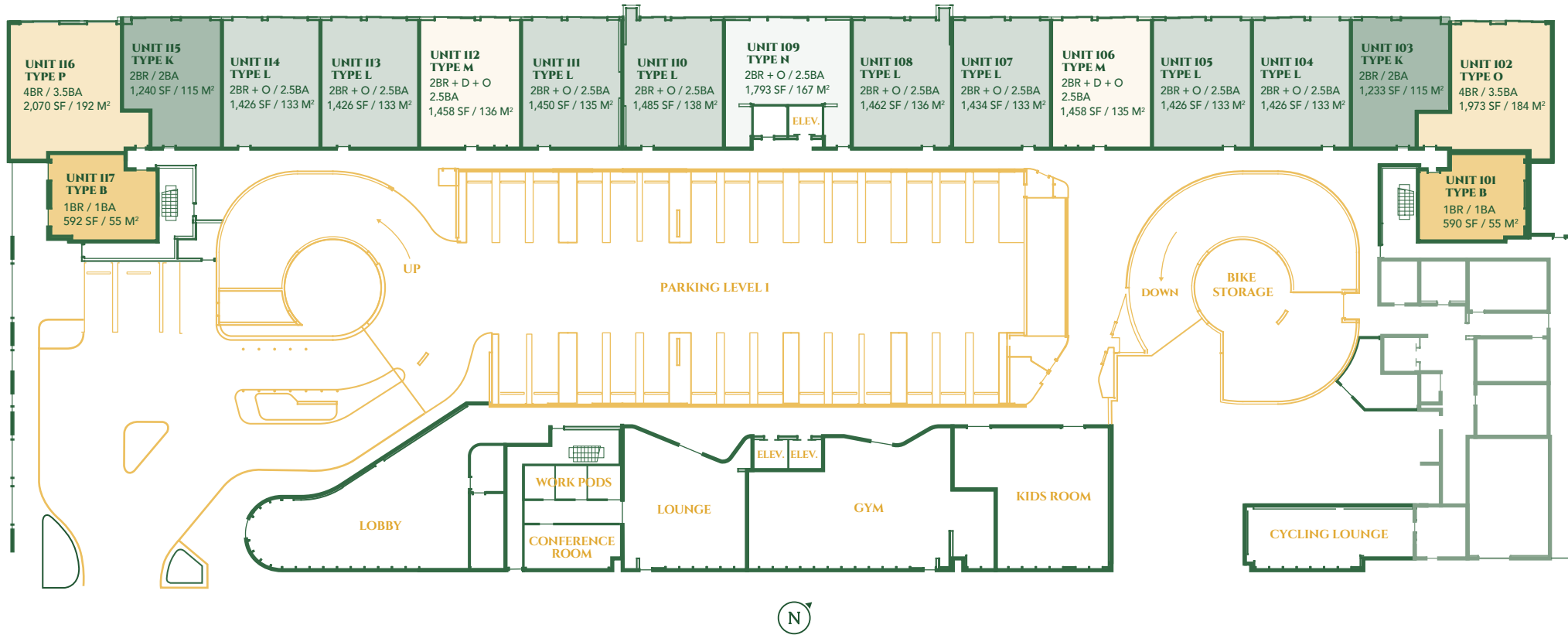
These drawings are conceptual only and are for the convenience of reference. They should not be relied upon as representations, express or implied, of the final detail of the residences. Units shown are examples of unit types and may not depict actual units. Stated square footages are ranges for a particular unit type and are measured to the exterior boundaries of the exterior walls and the centerline of interior demising walls and in fact vary from the area that would be determined by using the description and definition of the unit set forth in the declaration (which generally only includes the interior airspace between the perimeter walls and excludes interior structural components). Note that measurements of rooms set forth on this floorplan are generally taken at the greatest points of each given room (as if the room were a perfect rectangle), without regards for any cutouts. Accordingly, the area of the actual room will typically be smaller than the product obtained by multiplying the stated length times width. All dimensions are approximate and may vary with actual construction, and all floor plans and development plans are subject to change.





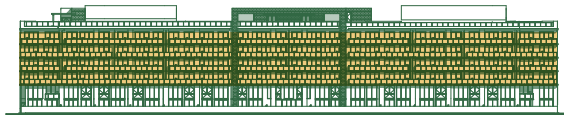
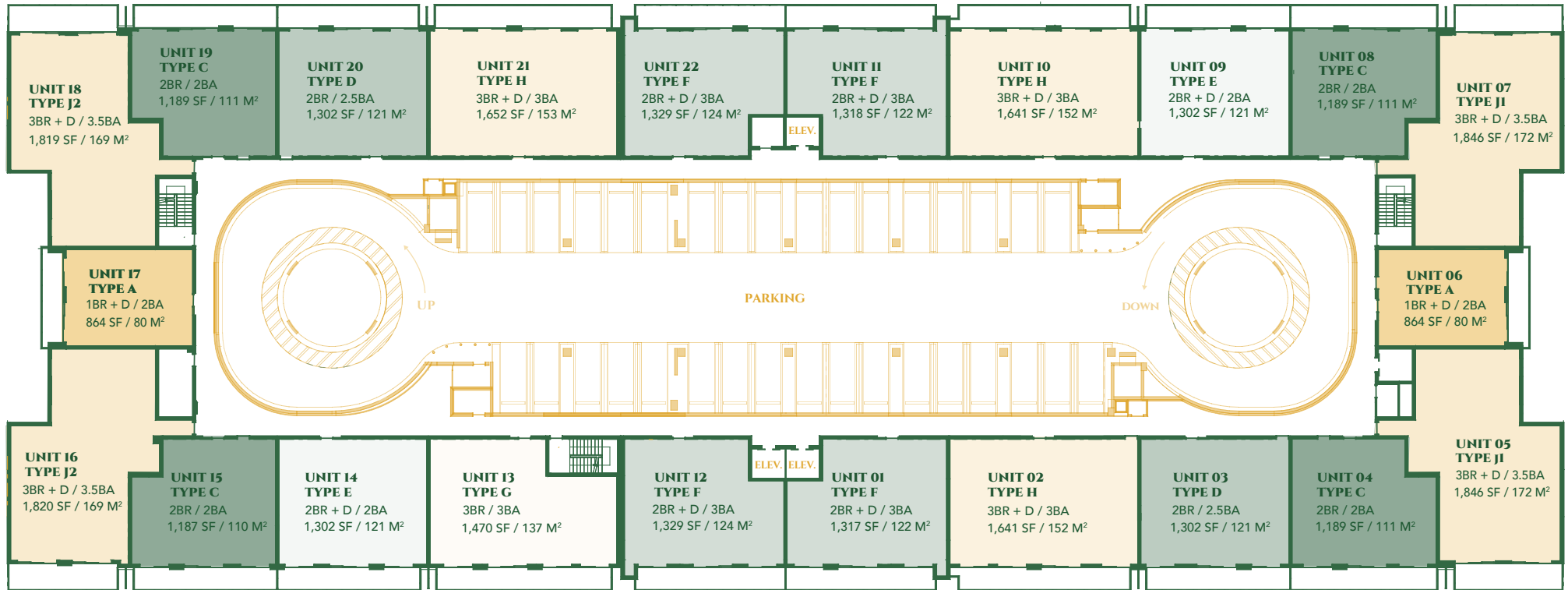
RESIDENCE MIX

1 Bedroom + Den	2
2 Bedrooms	6
2 Bedroom + Den	6
3 Bedrooms	1
3 Bedroom + Den	7



RESIDENCE MIX

1 Bedroom	2
2 Bedrooms	2
2 Bedrooms + Office	9
2 Bedrooms + Den + Office	2
4 Bedrooms	2



RESIDENCE MIX

1 Bedroom + Den	2
2 Bedrooms	6
2 Bedroom + Den	6
3 Bedrooms	1
3 Bedroom + Den	7

2200 BRICKELL

TYPE P

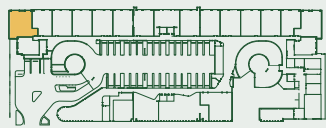
GARDEN VILLA 116

4 BEDROOMS

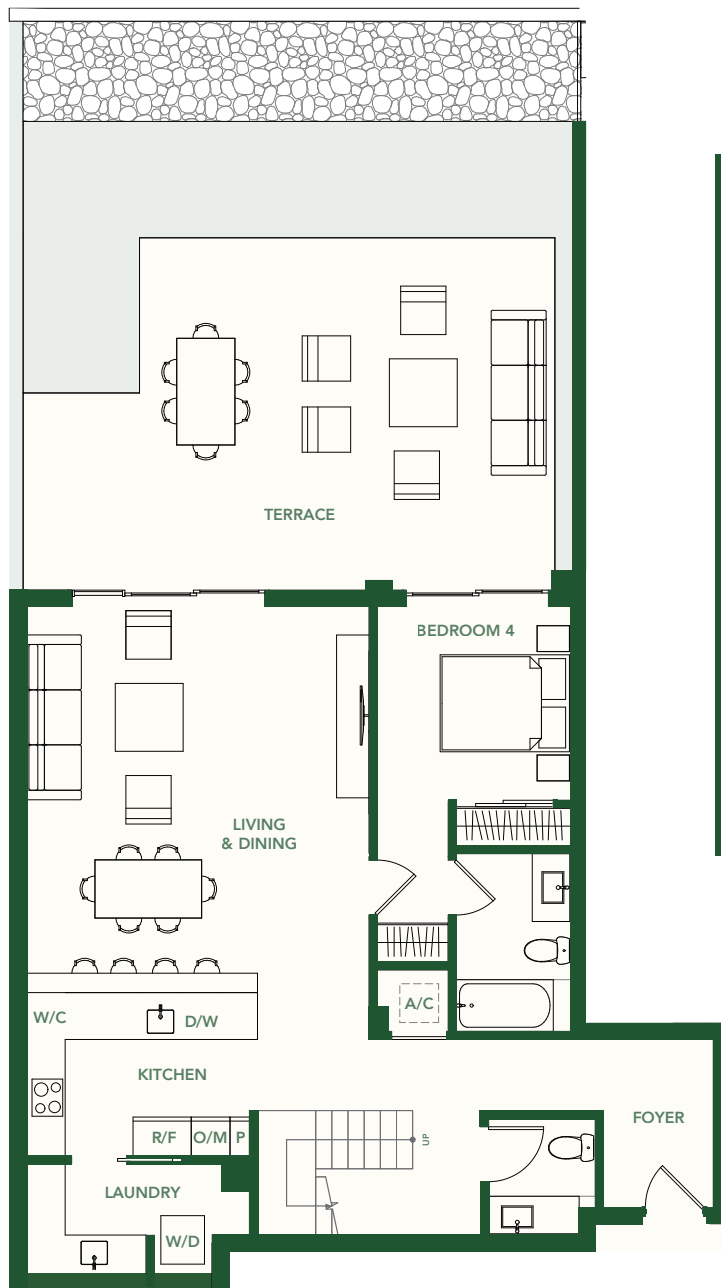
3.5 BATHROOMS

GROUND LEVEL

INTERIOR	2,069 SF / 192 M ²
TERRACE	540 SF / 50 M ²
TOTAL	2,609 SF / 242 M ²



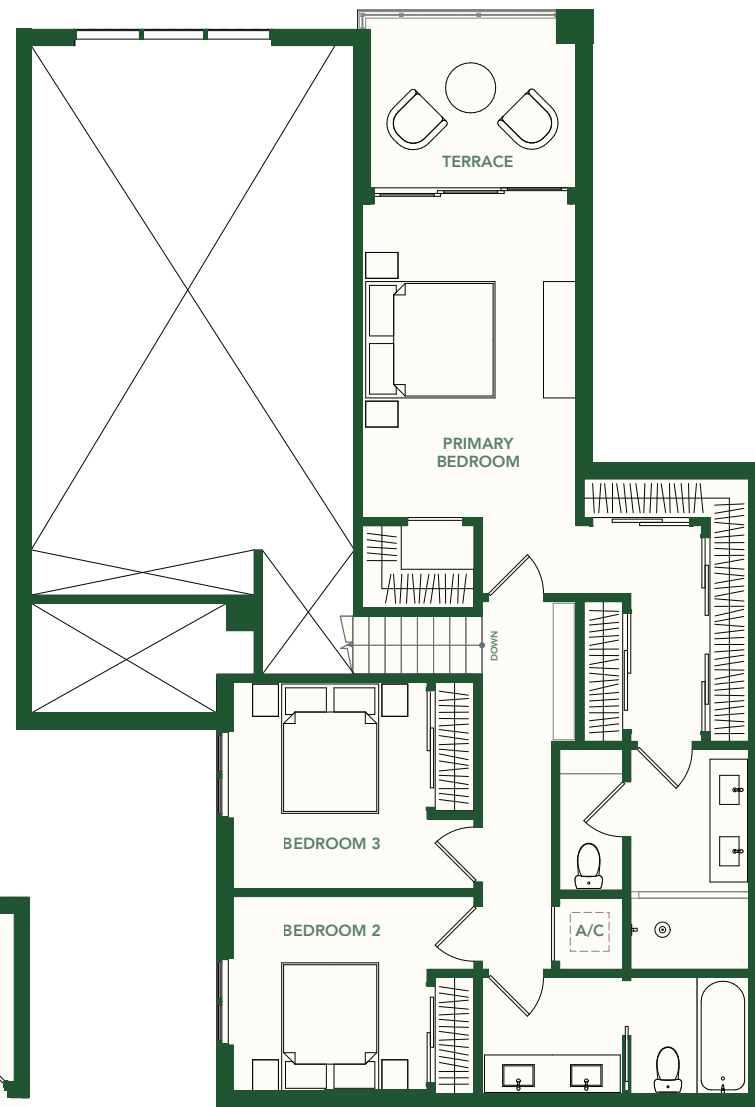
BRICKELL AVE.



GROUND LEVEL

Interior - 1,086 SF / 101 M²

Terrace - 449 SF / 42 M²



SECOND LEVEL

Interior - 983 SF / 91 M²

Terrace - 91 SF / 9 M²



These drawings are conceptual only and are for the convenience of reference. They should not be relied upon as representations, express or implied, of the final detail of the residences. Units shown are examples of unit types and may not depict actual units. Stated square footages are ranges for a particular unit type and are measured to the exterior boundaries of the exterior walls and the centerline of interior demising walls and in fact vary from the area that would be determined by using the description and definition of the unit set forth in the declaration (which generally only includes the interior airspace between the perimeter walls and excludes interior structural components). Note that measurements of rooms set forth on this floorplan are generally taken at the greatest points of each given room (as if the room were a perfect rectangle), without regards for any cutouts. Accordingly, the area of the actual room will typically be smaller than the product obtained by multiplying the stated length times width. All dimensions are approximate and may vary with actual construction, and all floor plans and development plans are subject to change.



2200
BRICKELL

TYPE O

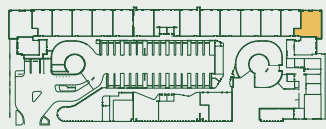
GARDEN VILLA 102

4 BEDROOMS

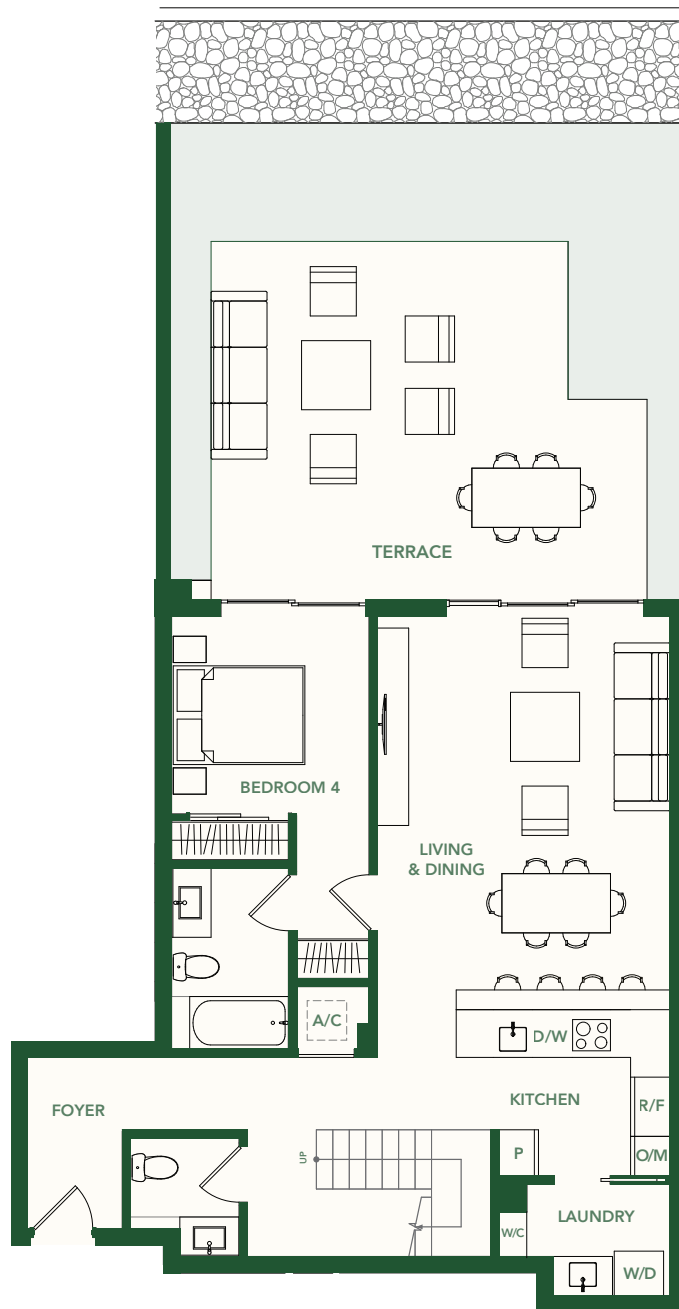
3.5 BATHROOMS

GROUND LEVEL

INTERIOR	1,973 SF / 183 M ²
TERRACE	459 SF / 43 M ²
TOTAL	2,432 SF / 226 M ²



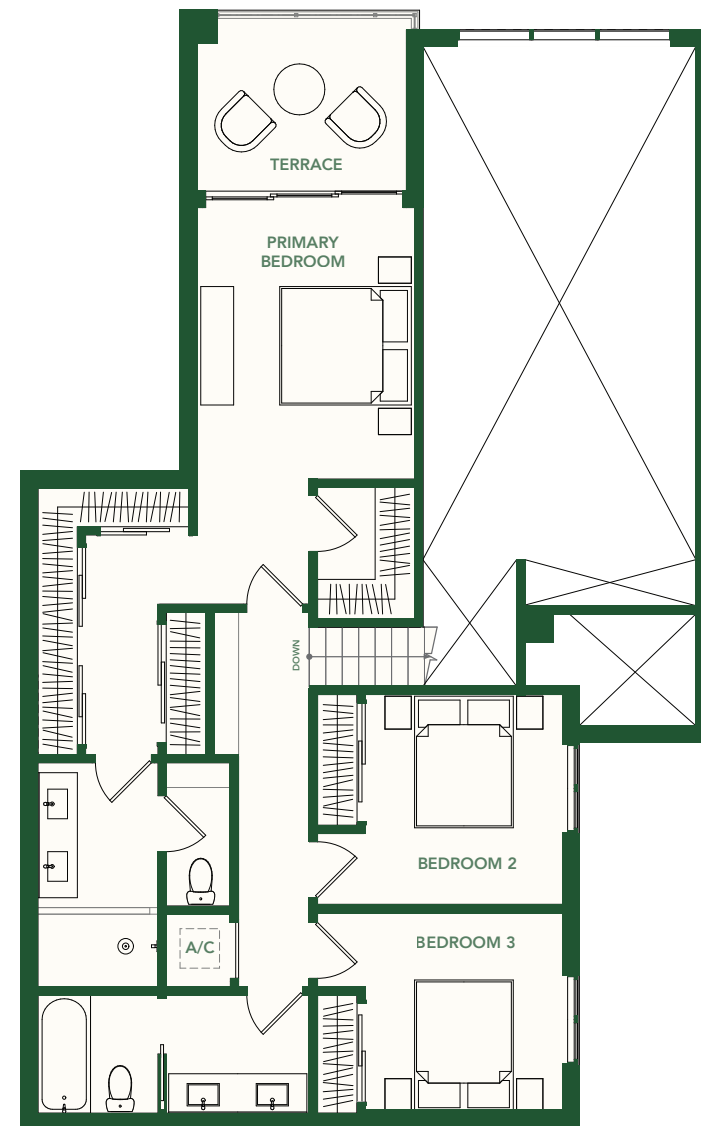
BRICKELL AVE.



GROUND LEVEL

Interior - 996 SF / 93 M²

Terrace - 368 SF / 34 M²



SECOND LEVEL

Interior - 977 SF / 91 M²

Terrace - 91 SF / 9 M²



These drawings are conceptual only and are for the convenience of reference. They should not be relied upon as representations, express or implied, of the final detail of the residences. Units shown are examples of unit types and may not depict actual units. Stated square footages are ranges for a particular unit type and are measured to the exterior boundaries of the exterior walls and the centerline of interior demising walls and in fact vary from the area that would be determined by using the description and definition of the unit set forth in the declaration (which generally only includes the interior airspace between the perimeter walls and excludes interior structural components). Note that measurements of rooms set forth on this floorplan are generally taken at the greatest points of each given room (as if the room were a perfect rectangle), without regards for any cutouts. Accordingly, the area of the actual room will typically be smaller than the product obtained by multiplying the stated length times width. All dimensions are approximate and may vary with actual construction, and all floor plans and development plans are subject to change.



2200 BRICKELL

TYPE N

GARDEN VILLA 109

2 BEDROOMS + OFFICE

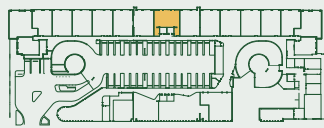
2.5 BATHROOMS

GROUND LEVEL

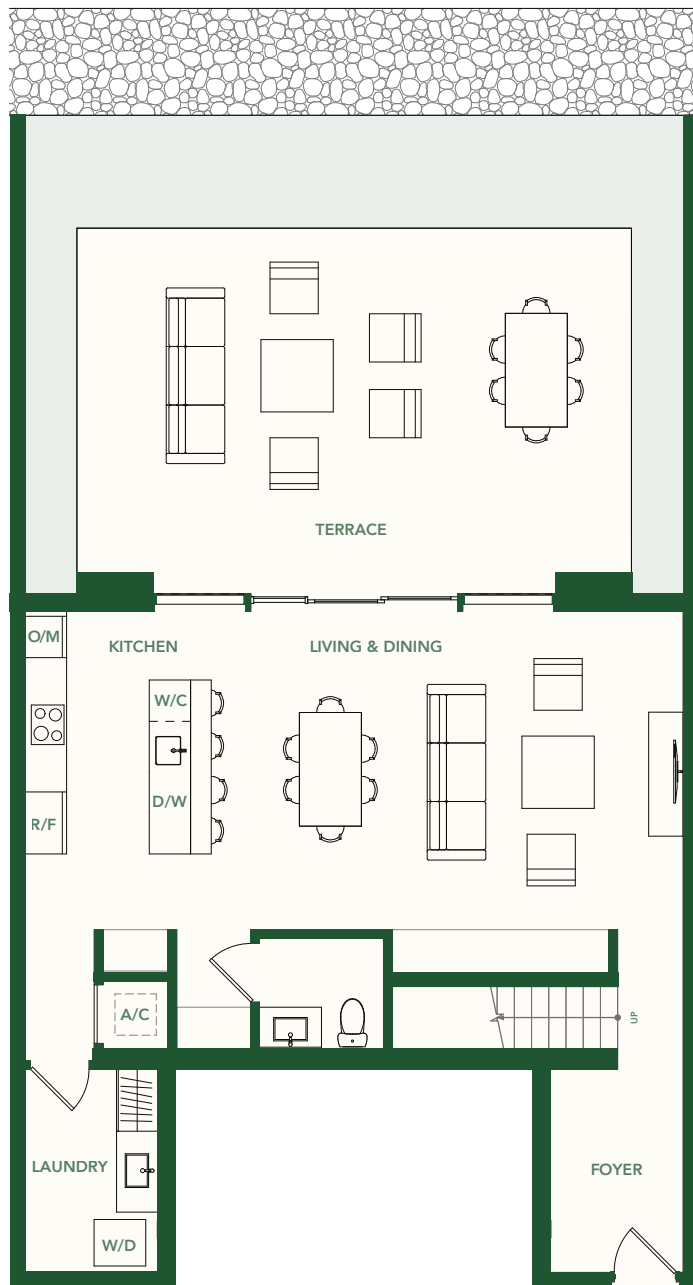
INTERIOR 1,793 SF / 167 M²

TERRACE 468 SF / 44 M²

TOTAL 2,261 SF / 211 M²



BRICKELL AVE.



GROUND LEVEL

Interior - 899 SF / 84 M²



SECOND LEVEL

Interior - 894 SF / 83 M²



These drawings are conceptual only and are for the convenience of reference. They should not be relied upon as representations, express or implied, of the final detail of the residences. Units shown are examples of unit types and may not depict actual units. Stated square footages are ranges for a particular unit type and are measured to the exterior boundaries of the exterior walls and the centerline of interior demising walls and in fact vary from the area that would be determined by using the description and definition of the unit set forth in the declaration (which generally only includes the interior airspace between the perimeter walls and excludes interior structural components). Note that measurements of rooms set forth on this floorplan are generally taken at the greatest points of each given room (as if the room were a perfect rectangle), without regard for any cutouts. Accordingly, the area of the actual room will typically be smaller than the product obtained by multiplying the stated length times width. All dimensions are approximate and may vary with actual construction, and all floor plans and development plans are subject to change.

ARIA LARGO
DEVELOPER/BUILDER

PLA
PROJECTS

2200
BRICKELL

TYPE H

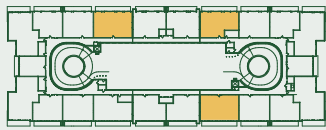
UNITS 02, 10, 21

3 BEDROOMS + DEN

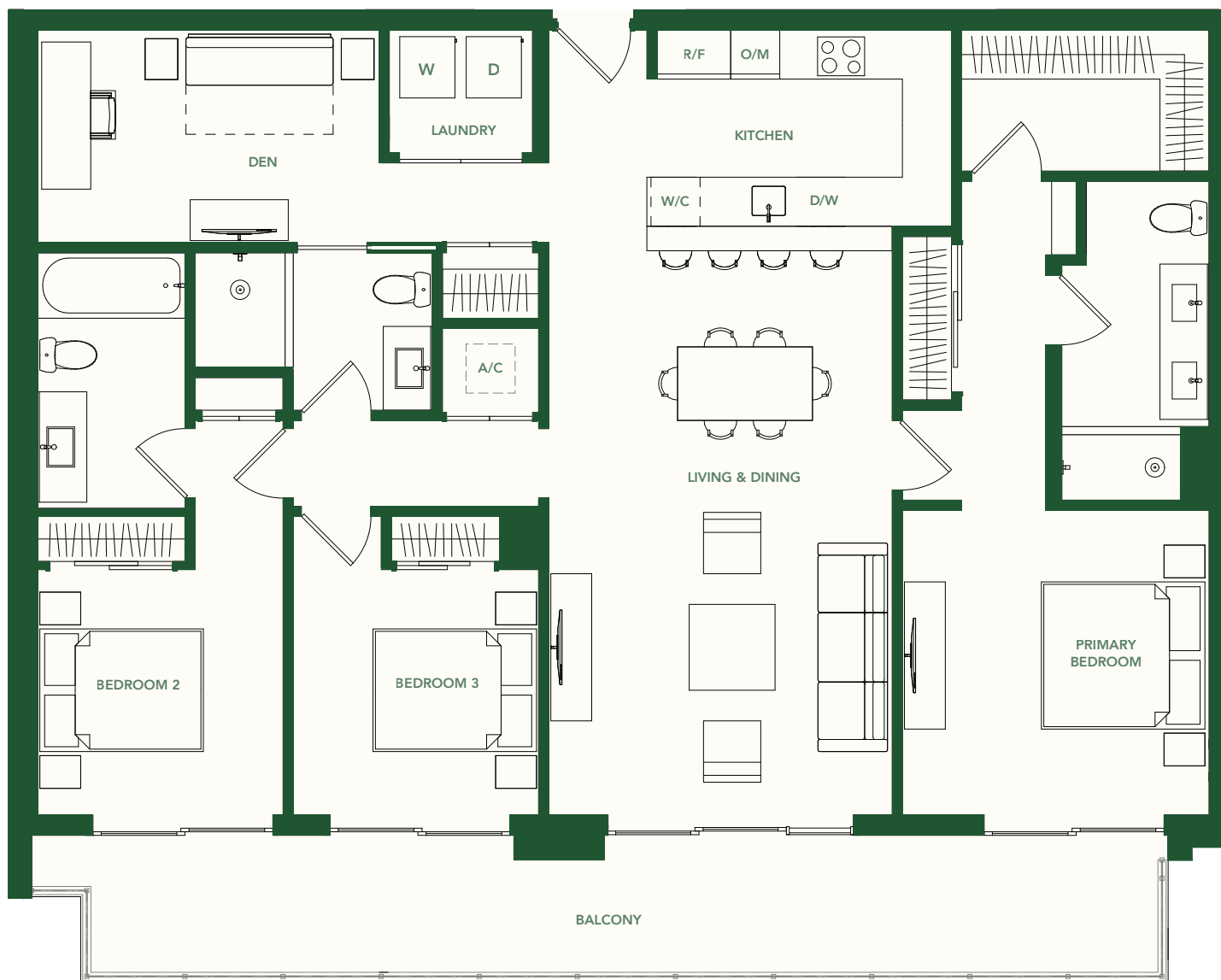
3 BATHROOMS

LEVELS 2 – 5

INTERIOR	1,641 SF / 152 M ²
BALCONY	259 SF / 24 M ²
TOTAL	1,900 SF / 176 M ²



BRICKELL AVE.



These drawings are conceptual only and are for the convenience of reference. They should not be relied upon as representations, express or implied, of the final detail of the residences. Units shown are examples of unit types and may not depict actual units. Stated square footages are ranges for a particular unit type and are measured to the exterior boundaries of the exterior walls and the centerline of interior demising walls and in fact vary from the area that would be determined by using the description and definition of the unit set forth in the declaration (which generally only includes the interior airspace between the perimeter walls and excludes interior structural components). Note that measurements of rooms set forth on this floorplan are generally taken at the greatest points of each given room (as if the room were a perfect rectangle), without regard for any cutouts. Accordingly, the area of the actual room will typically be smaller than the product obtained by multiplying the stated length times width. All dimensions are approximate and may vary with actual construction, and all floor plans and development plans are subject to change.

ARIA **LARGO** **PLA**
DEVELOPER/BUILDER PROJECTS

2200 BRICKELL

TYPE L

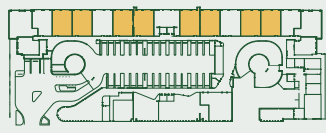
GARDEN VILLAS 104, 105, 107,
108, 110, 111, 113, 114

2 BEDROOMS + OFFICE

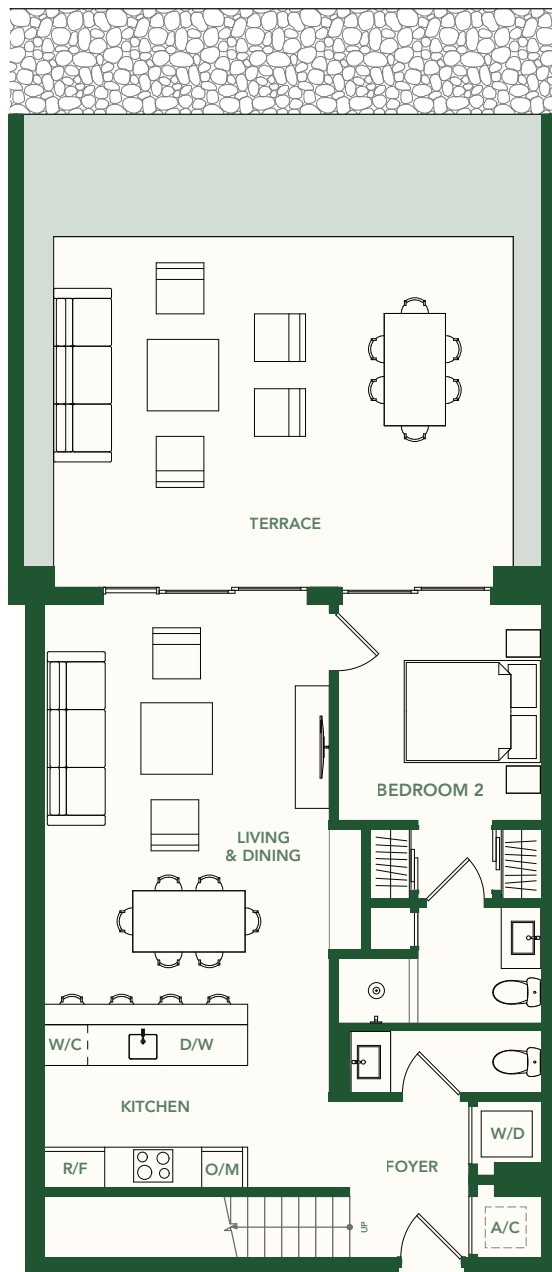
2.5 BATHROOMS

GROUND LEVEL

INTERIOR	1,426 SF / 133 M ²
TERRACE	388 SF / 36 M ²
TOTAL	1,814 SF / 169 M ²

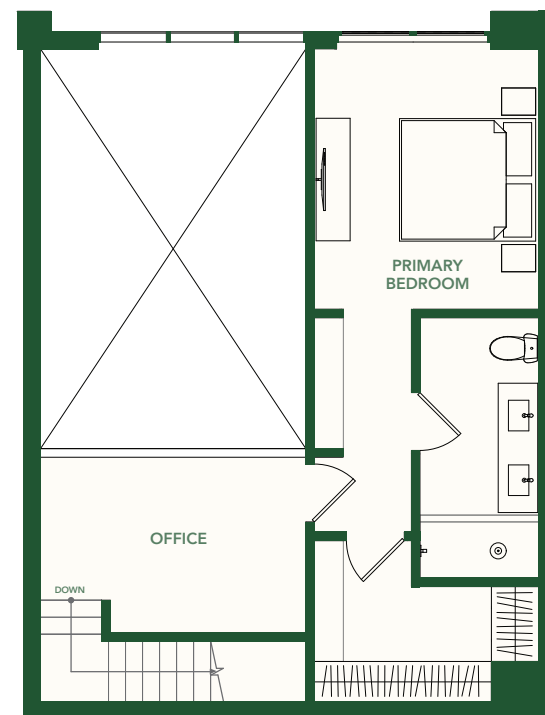


BRICKELL AVE.



GROUND LEVEL

Interior - 850 SF / 79 M²



SECOND LEVEL

Interior - 576 SF / 54 M²



These drawings are conceptual only and are for the convenience of reference. They should not be relied upon as representations, express or implied, of the final detail of the residences. Units shown are examples of unit types and may not depict actual units. Stated square footages are ranges for a particular unit type and are measured to the exterior boundaries of the exterior walls and the centerline of interior demising walls and in fact vary from the area that would be determined by using the description and definition of the unit set forth in the declaration (which generally only includes the interior airspace between the perimeter walls and excludes interior structural components). Note that measurements of rooms set forth on this floorplan are generally taken at the greatest points of each given room (as if the room were a perfect rectangle), without regard for any cutouts. Accordingly, the area of the actual room will typically be smaller than the product obtained by multiplying the stated length times width. All dimensions are approximate and may vary with actual construction, and all floor plans and development plans are subject to change.

ARIA LARGO **PLACE**
DEVELOPER/BUILDER PROJECTS

2200
BRICKELL

TYPE J

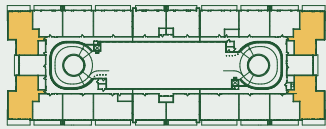
UNITS 05, 07, 16, 18

3 BEDROOMS + DEN

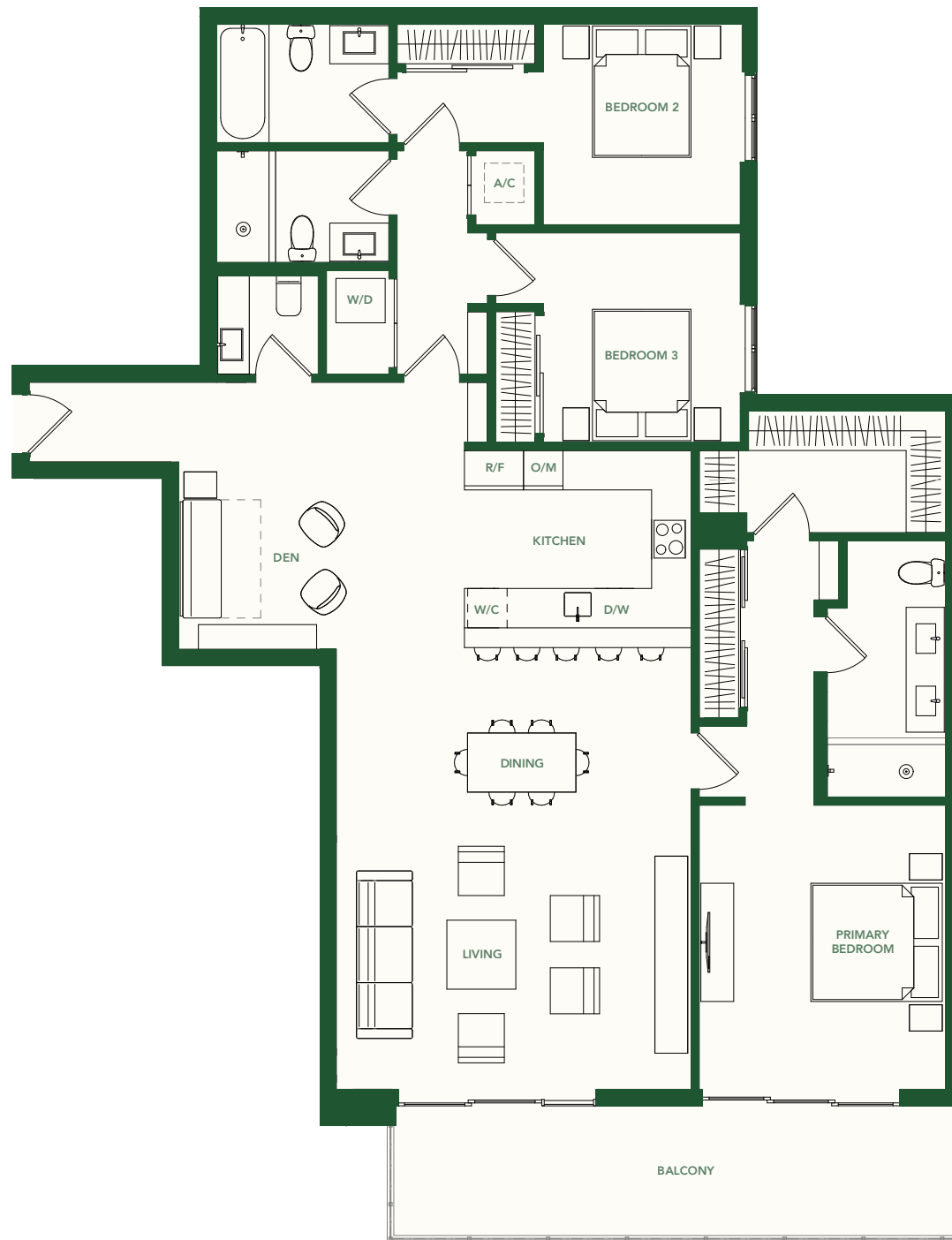
3.5 BATHROOMS

LEVELS 2 – 5

INTERIOR	1,819 SF / 169 M ²
BALCONY	182 SF / 17 M ²
TOTAL	2,001 SF / 186 M ²



BRICKELL AVE.



These drawings are conceptual only and are for the convenience of reference. They should not be relied upon as representations, express or implied, of the final detail of the residences. Units shown are examples of unit types and may not depict actual units. Stated square footages are ranges for a particular unit type and are measured to the exterior boundaries of the exterior walls and the centerline of interior demising walls and in fact vary from the area that would be determined by using the description and definition of the unit set forth in the declaration (which generally only includes the interior airspace between the perimeter walls and excludes interior structural components). Note that measurements of rooms set forth on this floorplan are generally taken at the greatest points of each given room (as if the room were a perfect rectangle), without regards for any cutouts. Accordingly, the area of the actual room will typically be smaller than the product obtained by multiplying the stated length times width. All dimensions are approximate and may vary with actual construction, and all floor plans and development plans are subject to change.

ARIA LARGO **PLACE**
DEVELOPER/BUILDER PROJECTS

2200 BRICKELL

TYPE K

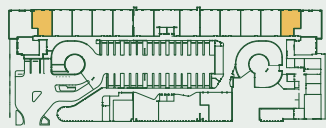
GARDEN VILLAS 103, 115

2 BEDROOMS

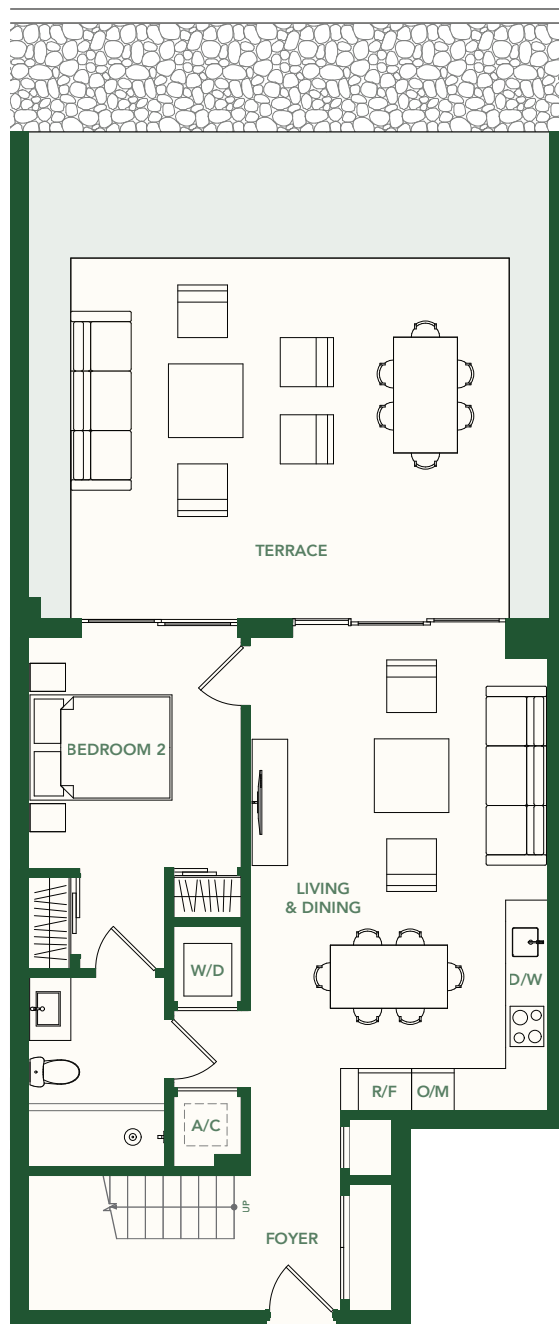
2 BATHROOMS

GROUND LEVEL

INTERIOR	1,233 SF / 115 M ²
TERRACE	353 SF / 33 M ²
TOTAL	1,586 SF / 148 M ²

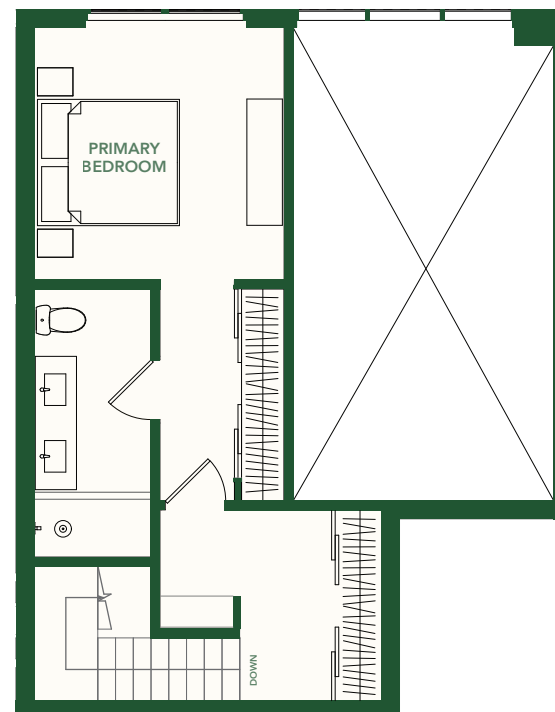


BRICKELL AVE.



GROUND LEVEL

Interior - 762 SF / 71 M²



SECOND LEVEL

Interior - 471 SF / 44 M²



These drawings are conceptual only and are for the convenience of reference. They should not be relied upon as representations, express or implied, of the final detail of the residences. Units shown are examples of unit types and may not depict actual units. Stated square footages are ranges for a particular unit type and are measured to the exterior boundaries of the exterior walls and the centerline of interior demising walls and in fact vary from the area that would be determined by using the description and definition of the unit set forth in the declaration (which generally only includes the interior airspace between the perimeter walls and excludes interior structural components). Note that measurements of rooms set forth on this floorplan are generally taken at the greatest points of each given room (as if the room were a perfect rectangle), without regard for any cutouts. Accordingly, the area of the actual room will typically be smaller than the product obtained by multiplying the stated length times width. All dimensions are approximate and may vary with actual construction, and all floor plans and development plans are subject to change.

ARIA LARGO **PLACE**
DEVELOPER/BUILDER PROJECTS

2200 BRICKELL

TYPE M

GARDEN VILLAS 106, 112

2 BEDROOMS + DEN + OFFICE

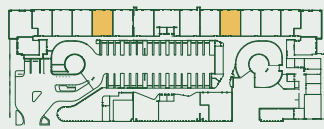
2.5 BATHROOMS

GROUND LEVEL

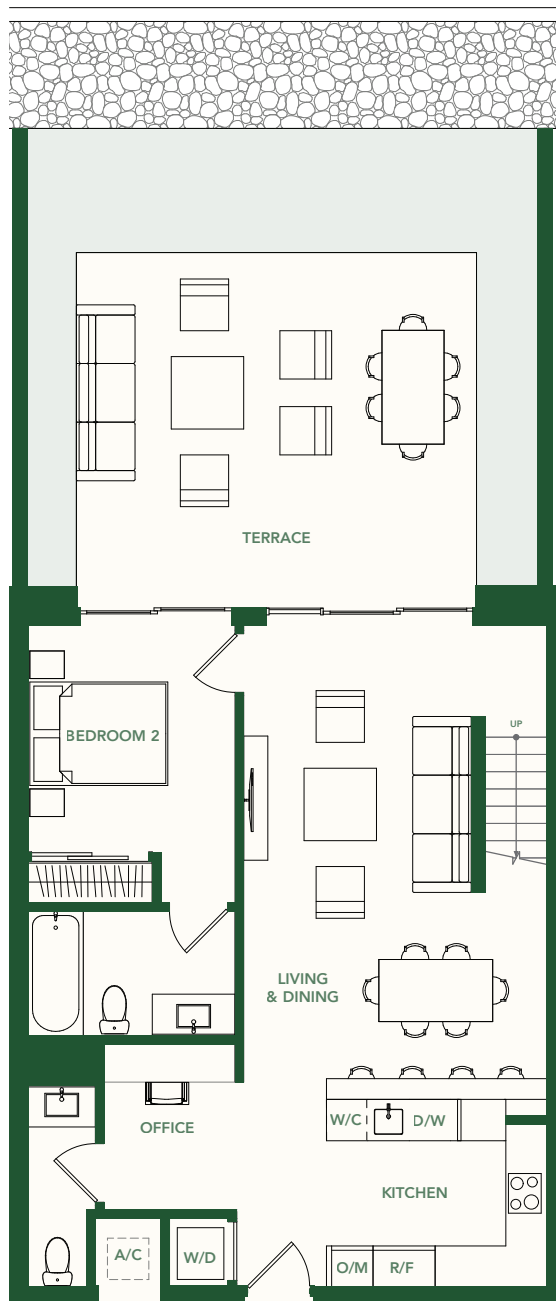
INTERIOR 1,458 SF / 135 M²

TERRACE 391 SF / 36 M²

TOTAL 1,849 SF / 171 M²

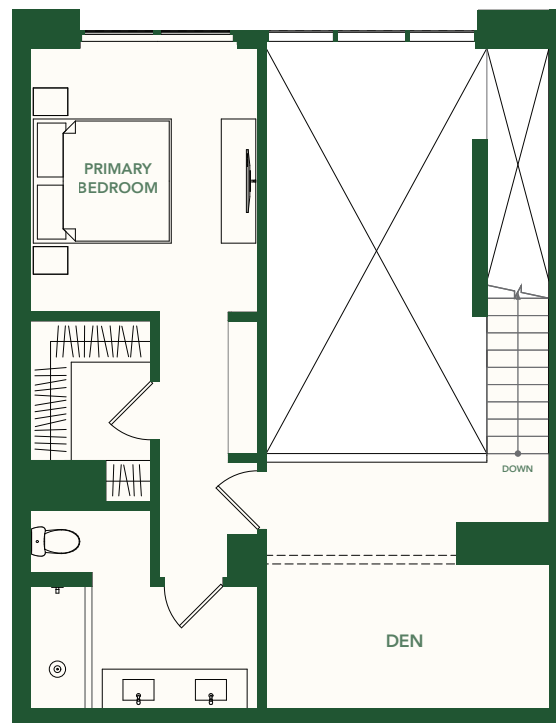


BRICKELL AVE.



GROUND LEVEL

Interior - 873 SF / 81 M²



SECOND LEVEL

Interior - 585 SF / 54 M²



These drawings are conceptual only and are for the convenience of reference. They should not be relied upon as representations, express or implied, of the final detail of the residences. Units shown are examples of unit types and may not depict actual units. Stated square footages are ranges for a particular unit type and are measured to the exterior boundaries of the exterior walls and the centerline of interior demising walls and in fact vary from the area that would be determined by using the description and definition of the unit set forth in the declaration (which generally only includes the interior airspace between the perimeter walls and excludes interior structural components). Note that measurements of rooms set forth on this floorplan are generally taken at the greatest points of each given room (as if the room were a perfect rectangle), without regards for any cutouts. Accordingly, the area of the actual room will typically be smaller than the product obtained by multiplying the stated length times width. All dimensions are approximate and may vary with actual construction, and all floor plans and development plans are subject to change.

ARIA LARGO
DEVELOPER/BUILDER

PLAQUE
PROJECTS

2200
BRICKELL

TYPE G

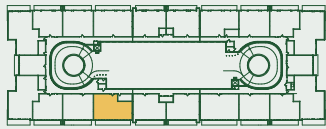
UNITS 13

3 BEDROOMS

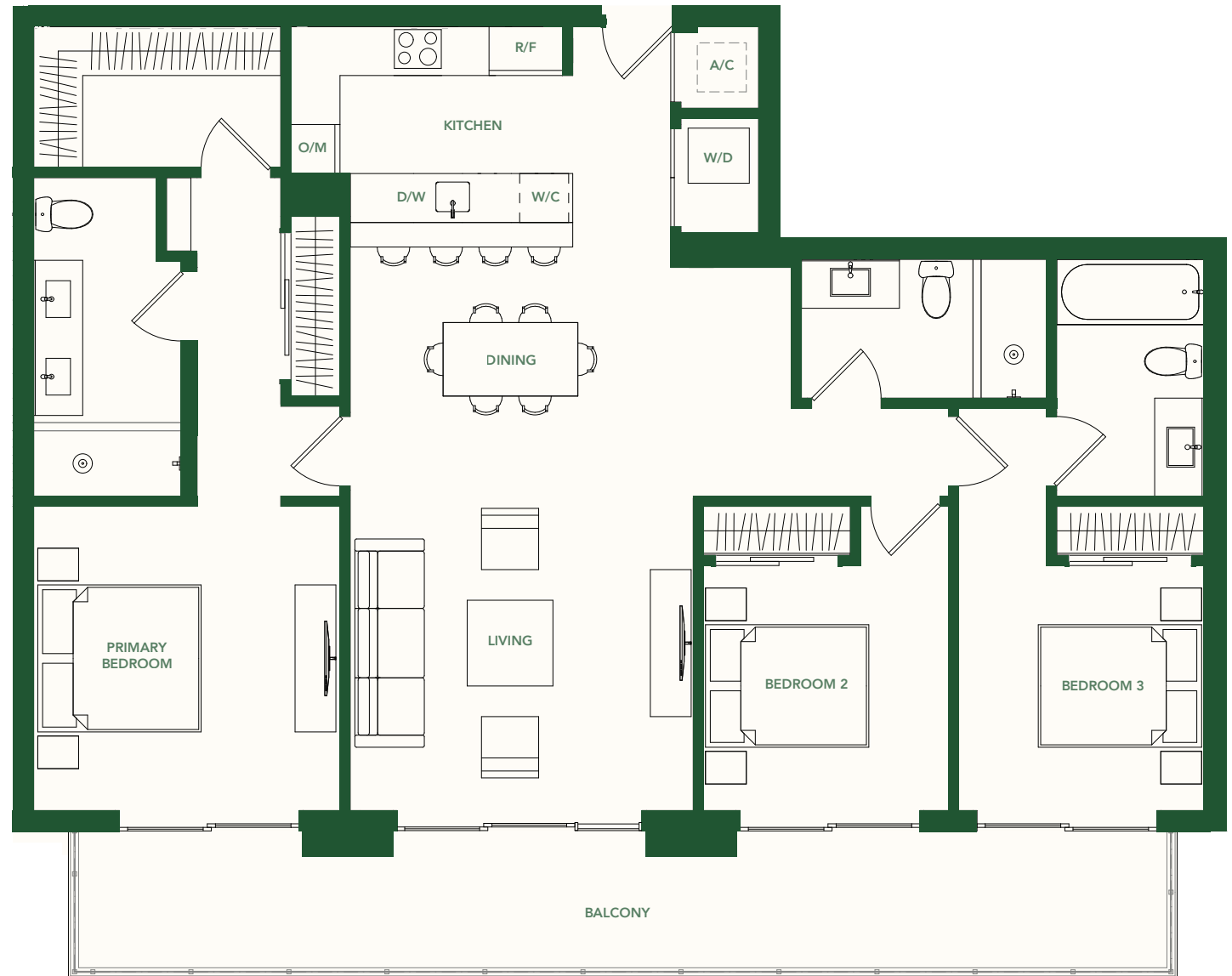
3 BATHROOMS

LEVELS 2 – 5

INTERIOR	1,470 SF / 137 M ²
BALCONY	256 SF / 24 M ²
TOTAL	1,726 SF / 161 M ²



BRICKELL AVE.



These drawings are conceptual only and are for the convenience of reference. They should not be relied upon as representations, express or implied, of the final detail of the residences. Units shown are examples of unit types and may not depict actual units. Stated square footages are ranges for a particular unit type and are measured to the exterior boundaries of the exterior walls and the centerline of interior demising walls and in fact vary from the area that would be determined by using the description and definition of the unit set forth in the declaration (which generally only includes the interior airspace between the perimeter walls and excludes interior structural components). Note that measurements of rooms set forth on this floorplan are generally taken at the greatest points of each given room (as if the room were a perfect rectangle), without regards for any cutouts. Accordingly, the area of the actual room will typically be smaller than the product obtained by multiplying the stated length times width. All dimensions are approximate and may vary with actual construction, and all floor plans and development plans are subject to change.

ARIA LARGO **PLA**
DEVELOPER/BUILDER PROJECTS

2200 BRICKELL

TYPE D

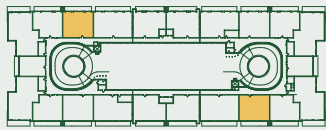
UNITS 03, 20

2 BEDROOMS

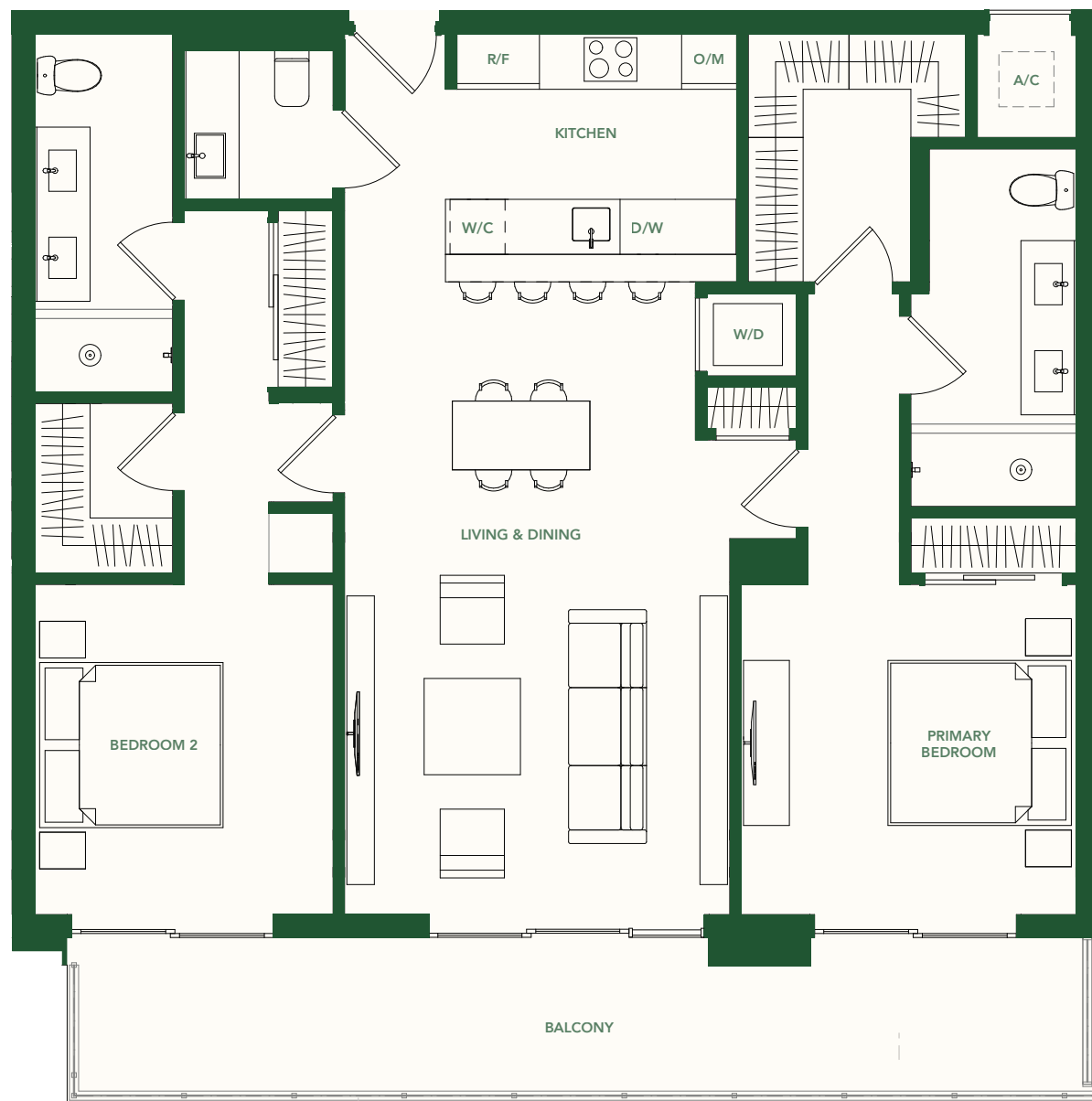
2.5 BATHROOMS

LEVEL 2 – 5

INTERIOR	1,302 SF / 121 M ²
BALCONY	209 SF / 19 M ²
TOTAL	1,511 SF / 140 M ²



BRICKELL AVE.



These drawings are conceptual only and are for the convenience of reference. They should not be relied upon as representations, express or implied, of the final detail of the residences. Units shown are examples of unit types and may not depict actual units. Stated square footages are ranges for a particular unit type and are measured to the exterior boundaries of the exterior walls and the centerline of interior demising walls and in fact vary from the area that would be determined by using the description and definition of the unit set forth in the declaration (which generally only includes the interior airspace between the perimeter walls and excludes interior structural components). Note that measurements of rooms set forth on this floorplan are generally taken at the greatest points of each given room (as if the room were a perfect rectangle), without regards for any cutouts. Accordingly, the area of the actual room will typically be smaller than the product obtained by multiplying the stated length times width. All dimensions are approximate and may vary with actual construction, and all floor plans and development plans are subject to change.

ARIA LARGO **PLA**
DEVELOPER/BUILDER PROJECTS

2200
BRICKELL

TYPE C

UNITS 04, 08, 15, 19

2 BEDROOMS

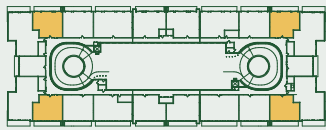
2 BATHROOMS

LEVEL 2 – 5

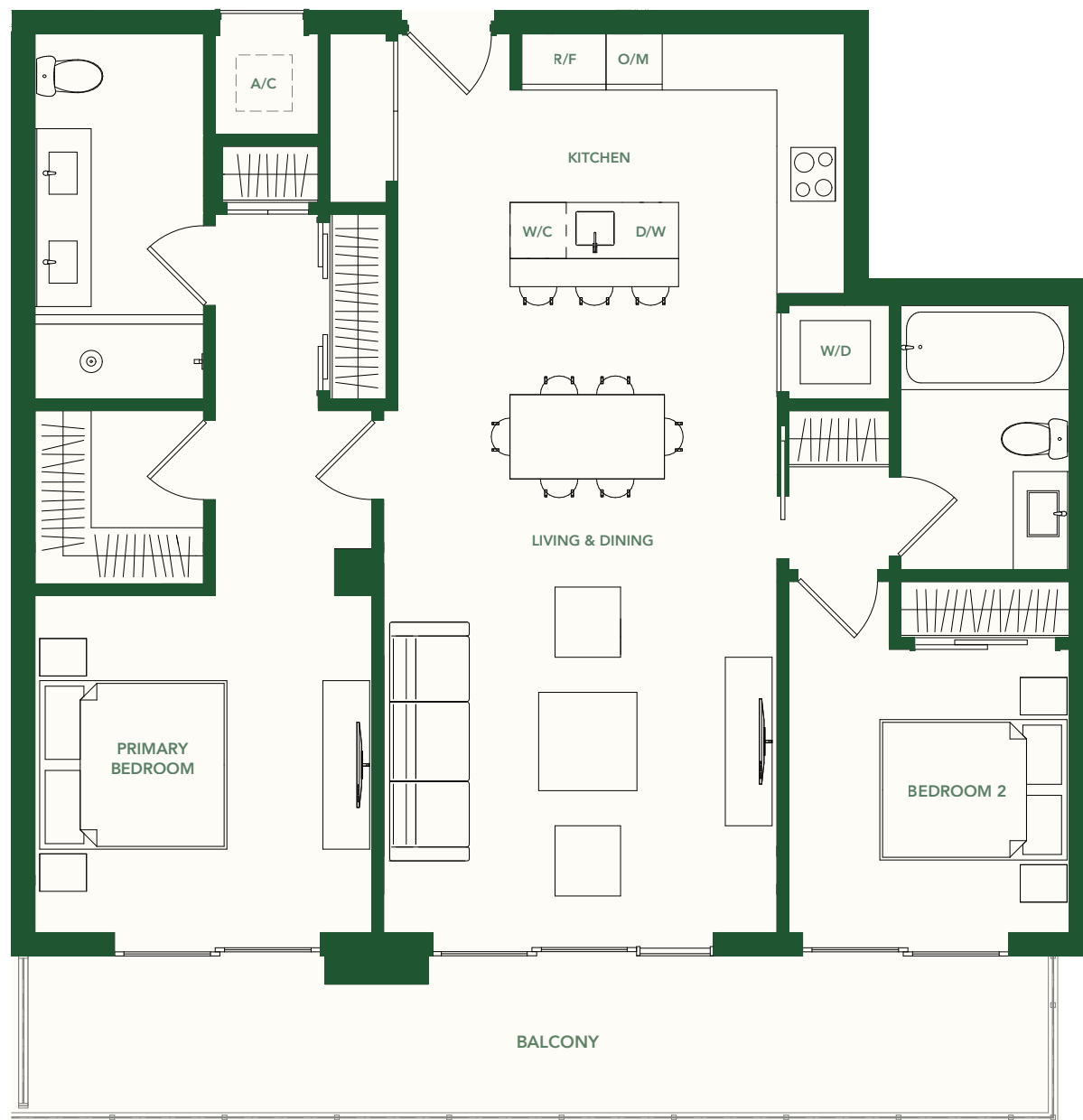
INTERIOR 1,187 SF / 110 M²

BALCONY 215 SF / 20 M²

TOTAL 1,402 SF / 130 M²



BRICKELL AVE.



These drawings are conceptual only and are for the convenience of reference. They should not be relied upon as representations, express or implied, of the final detail of the residences. Units shown are examples of unit types and may not depict actual units. Stated square footages are ranges for a particular unit type and are measured to the exterior boundaries of the exterior walls and the centerline of interior demising walls and in fact vary from the area that would be determined by using the description and definition of the unit set forth in the declaration (which generally only includes the interior airspace between the perimeter walls and excludes interior structural components). Note that measurements of rooms set forth on this floorplan are generally taken at the greatest points of each given room (as if the room were a perfect rectangle), without regard for any cutouts. Accordingly, the area of the actual room will typically be smaller than the product obtained by multiplying the stated length times width. All dimensions are approximate and may vary with actual construction, and all floor plans and development plans are subject to change.

ARIA LARGO **PLACE**
DEVELOPER/BUILDER PROJECTS

2200
BRICKELL

TYPE A

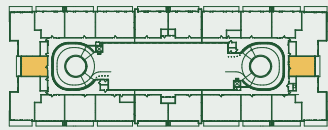
UNITS 06, 17

1 BEDROOM + DEN

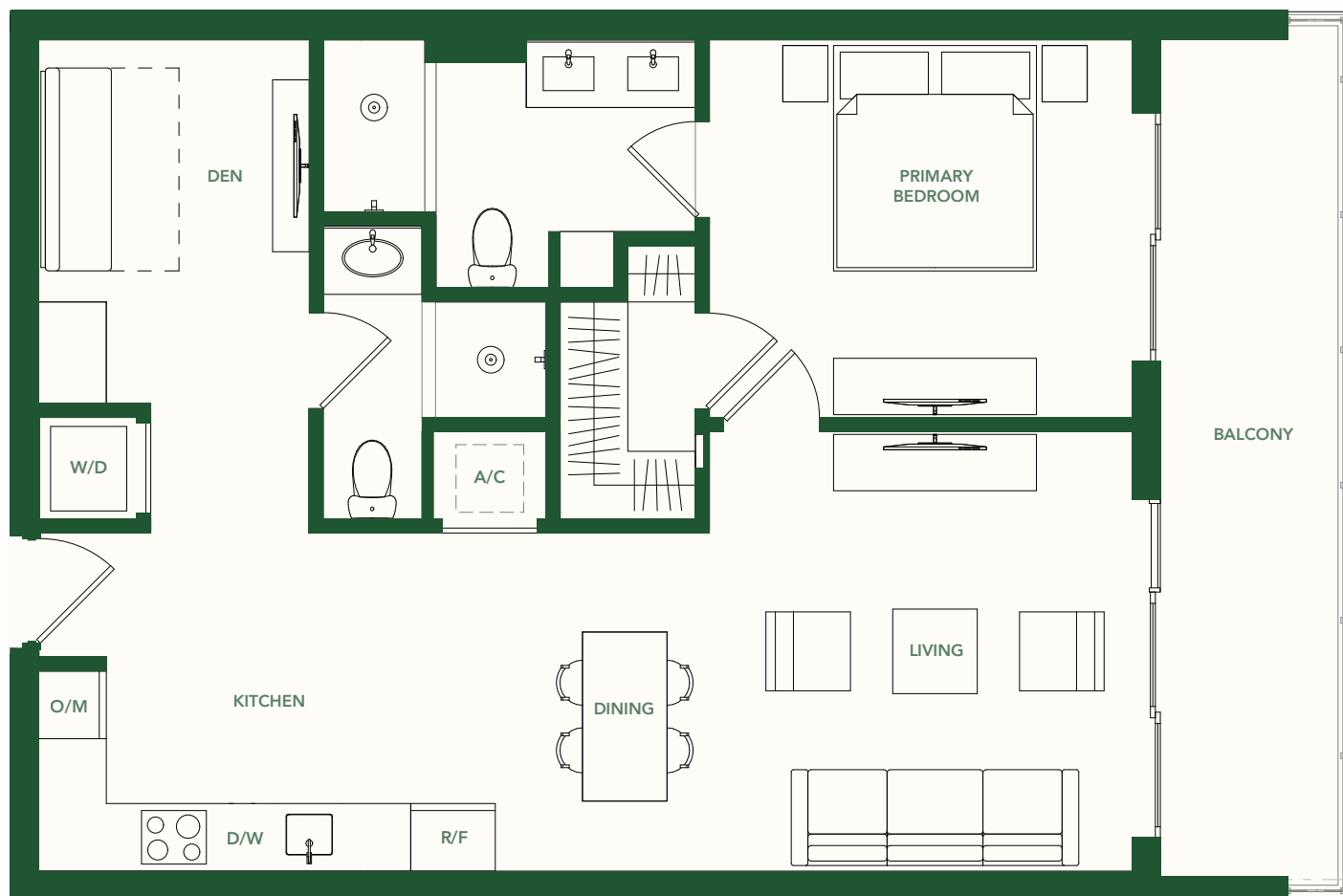
2 BATHROOMS

LEVELS 2 – 5

INTERIOR	864 SF / 80 M ²
BALCONY	124 SF / 12 M ²
TOTAL	988 SF / 92 M ²



BRICKELL AVE.



These drawings are conceptual only and are for the convenience of reference. They should not be relied upon as representations, express or implied, of the final detail of the residences. Units shown are examples of unit types and may not depict actual units. Stated square footages are ranges for a particular unit type and are measured to the exterior boundaries of the exterior walls and the centerline of interior demising walls and in fact vary from the area that would be determined by using the description and definition of the unit set forth in the declaration (which generally only includes the interior airspace between the perimeter walls and excludes interior structural components). Note that measurements of rooms set forth on this floorplan are generally taken at the greatest points of each given room (as if the room were a perfect rectangle), without regard for any cutouts. Accordingly, the area of the actual room will typically be smaller than the product obtained by multiplying the stated length times width. All dimensions are approximate and may vary with actual construction, and all floor plans and development plans are subject to change.

ARIA LARGO **PLACE**
DEVELOPER/BUILDER PROJECTS

2200
BRICKELL

TYPE E

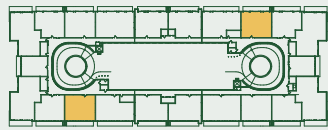
UNITS 09, 14

2 BEDROOMS + DEN

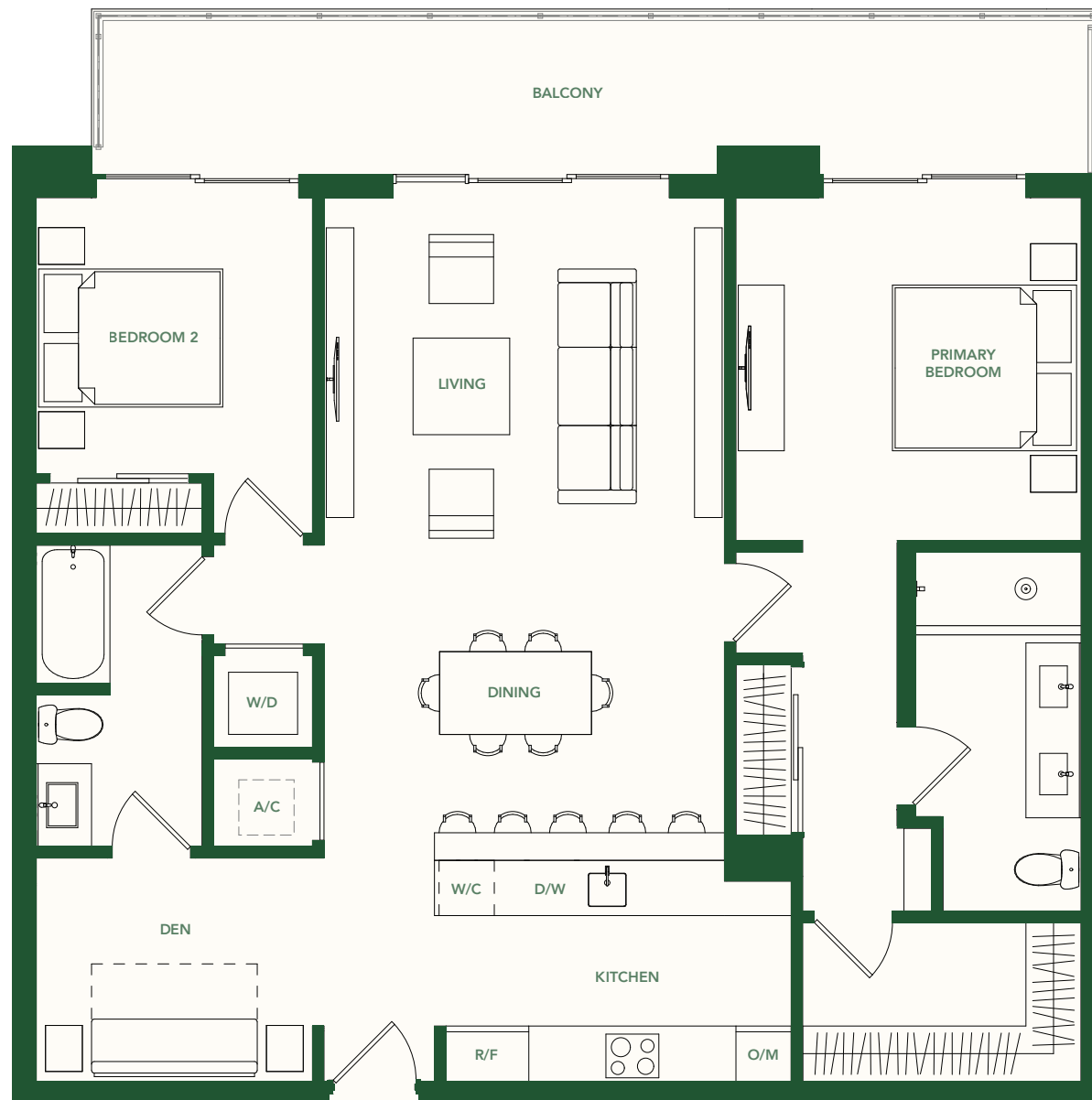
2 BATHROOMS

LEVELS 2 – 5

INTERIOR	1,302 SF / 121 M ²
BALCONY	213 SF / 20 M ²
TOTAL	1,515 SF / 141 M ²



BRICKELL AVE.



These drawings are conceptual only and are for the convenience of reference. They should not be relied upon as representations, express or implied, of the final detail of the residences. Units shown are examples of unit types and may not depict actual units. Stated square footages are ranges for a particular unit type and are measured to the exterior boundaries of the exterior walls and the centerline of interior demising walls and in fact vary from the area that would be determined by using the description and definition of the unit set forth in the declaration (which generally only includes the interior airspace between the perimeter walls and excludes interior structural components). Note that measurements of rooms set forth on this floorplan are generally taken at the greatest points of each given room (as if the room were a perfect rectangle), without regard for any cutouts. Accordingly, the area of the actual room will typically be smaller than the product obtained by multiplying the stated length times width. All dimensions are approximate and may vary with actual construction, and all floor plans and development plans are subject to change.

ARIA LARGO **PLA**
DEVELOPER/BUILDER PROJECTS

2200 BRICKELL

TYPE F

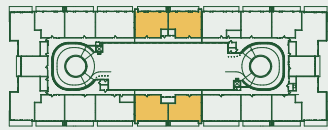
UNITS 01, 11, 12, 22

2 BEDROOMS + DEN

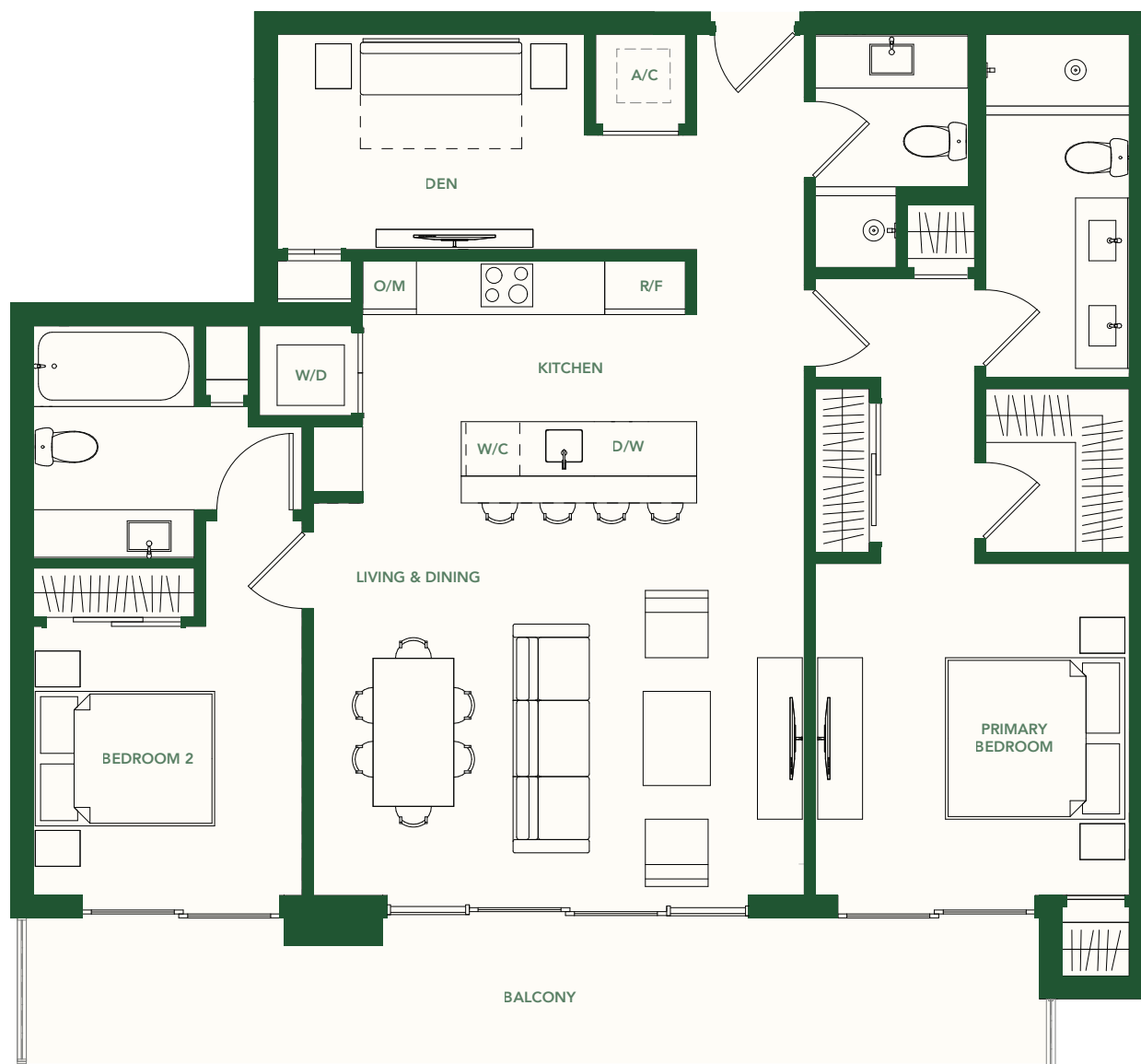
3 BATHROOMS

LEVELS 2 – 5

INTERIOR	1,317 SF / 122 M ²
BALCONY	210 SF / 20 M ²
TOTAL	1,527 SF / 142 M ²



BRICKELL AVE.



These drawings are conceptual only and are for the convenience of reference. They should not be relied upon as representations, express or implied, of the final detail of the residences. Units shown are examples of unit types and may not depict actual units. Stated square footages are ranges for a particular unit type and are measured to the exterior boundaries of the exterior walls and the centerline of interior demising walls and in fact vary from the area that would be determined by using the description and definition of the unit set forth in the declaration (which generally only includes the interior airspace between the perimeter walls and excludes interior structural components). Note that measurements of rooms set forth on this floorplan are generally taken at the greatest points of each given room (as if the room were a perfect rectangle), without regards for any cutouts. Accordingly, the area of the actual room will typically be smaller than the product obtained by multiplying the stated length times width. All dimensions are approximate and may vary with actual construction, and all floor plans and development plans are subject to change.

ARIA LARGO **PLACE**
DEVELOPER/BUILDER PROJECTS