



CASAMAR

POMPANO BEACH

POMPANO BEACH LIKE YOU'VE NEVER SEEN

900 N OCEAN BLVD, POMPANO BEACH, FL 33062 | INQUIRIES 954.433.6080 | CASAMARBEACH.COM



FLOORPLAN

Model 101 LEVEL 1

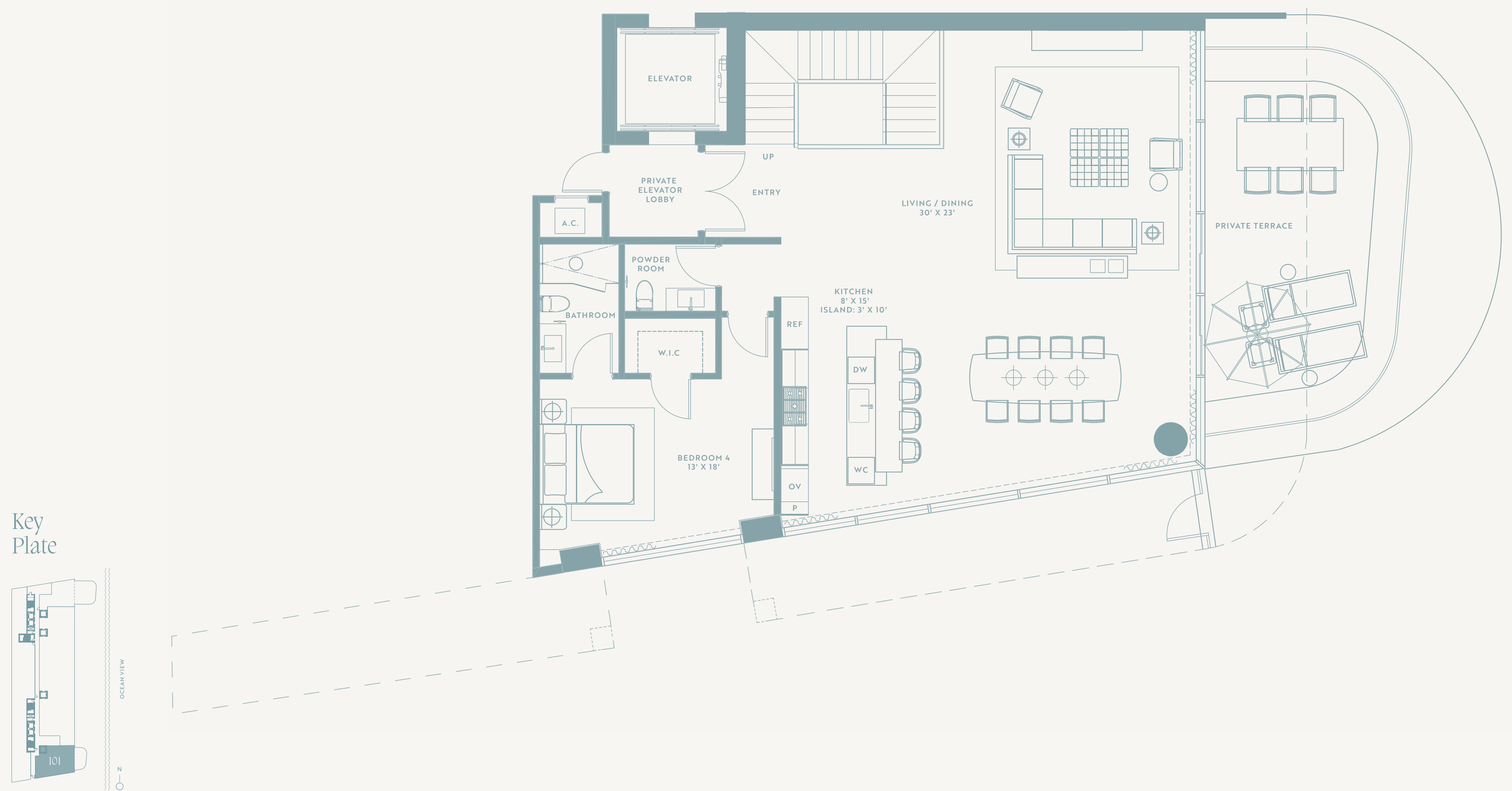
Model 101



CASAMAR
POMPANO BEACH

4 Bedroom Townhouse Level 1

LEVEL 1 INTERIOR 1,761 SF | LEVEL 1 EXTERIOR 240 SF | LEVEL 1 TOTAL 2,001 SF
 LEVEL 2 INTERIOR 2,173 SF | LEVEL 2 EXTERIOR 498 SF | LEVEL 2 TOTAL 2,671 SF
TOTAL INTERIOR 3,934 SF | TOTAL EXTERIOR 738 SF | TOTAL 4,672 SF



ORAL REPRESENTATIONS CANNOT BE RELIED UPON AS CORRECTLY STATING REPRESENTATIONS OF THE DEVELOPER. FOR CORRECT REPRESENTATIONS, MAKE REFERENCE TO THE DOCUMENTS REQUIRED BY SECTION 718.503, FLORIDA STATUTES, TO BE FURNISHED BY A DEVELOPER TO A BUYER OR LESSEE. CASAMAR IS DEVELOPED BY PRH 900 NORTH OCEAN, LLC (DEVELOPER) AND ANY CASAMAR OFFERING IS MADE ONLY BY THE DEVELOPER'S PROSPECTUS FOR THE CONDOMINIUM. THE DEVELOPER IS NOT INCORPORATED IN, LOCATED IN, NOR A RESIDENT OF, NEW YORK. THIS IS NOT INTENDED TO BE AN OFFER TO SELL, OR SOLICITATION OF AN OFFER TO BUY, CONDOMINIUM UNITS IN NEW YORK OR TO RESIDENTS OF NEW YORK, OR IN ANY OTHER JURISDICTION WHERE PROHIBITED BY LAW UNLESS THE CONDOMINIUM IS REGISTERED IN SUCH JURISDICTIONS OR EXEMPT. NO STATEMENT SHOULD BE RELIED UPON IF NOT MADE IN THE DEVELOPER'S PROSPECTUS. ARCHITECTURAL DESIGN ELEMENTS MAY VARY FROM CONCEPT TO ACTUAL CONSTRUCTION. ALL DEPICTIONS ARE CONCEPTUAL. DEVELOPER, PURSUANT TO A LICENSE AGREEMENT HAS A RIGHT TO USE THE TRADE NAMES, MARKS, AND LOGOS OF THE RELATED GROUP. CONSULT THE DEVELOPER'S PROSPECTUS FOR ALL TERMS, CONDITIONS, SPECIFICATIONS, AND UNIT DIMENSIONS. REPRODUCTION FOR PRIVATE OR COMMERCIAL USE IS NOT AUTHORIZED. 2022 © PRH 900 NORTH OCEAN, LLC. UNLESS OTHERWISE NOTED, WITH ALL RIGHTS RESERVED.



CASAMAR

POMPANO BEACH

POMPANO BEACH LIKE YOU'VE NEVER SEEN

900 N OCEAN BLVD, POMPANO BEACH, FL 33062 | INQUIRIES 954.433.6080 | CASAMARBEACH.COM



FLOORPLAN

Model 101

LEVEL 2

Model 101



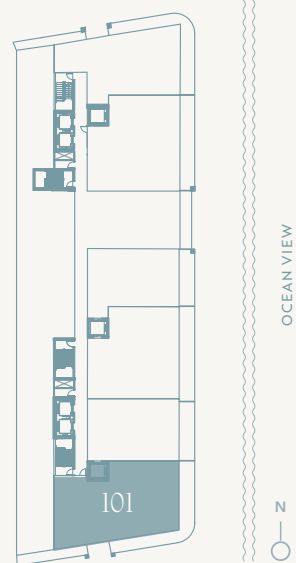
CASAMAR
POMPANO BEACH

4 Bedroom Townhouse Level 2

LEVEL 1 INTERIOR 1,761 SF | LEVEL 1 EXTERIOR 240 SF | LEVEL 1 TOTAL 2,001 SF
 LEVEL 2 INTERIOR 2,173 SF | LEVEL 2 EXTERIOR 498 SF | LEVEL 2 TOTAL 2,671 SF
TOTAL INTERIOR 3,934 SF | TOTAL EXTERIOR 738 SF | TOTAL 4,672 SF



Key Plate



ORAL REPRESENTATIONS CANNOT BE RELIED UPON AS CORRECTLY STATING REPRESENTATIONS OF THE DEVELOPER. FOR CORRECT REPRESENTATIONS, MAKE REFERENCE TO THE DOCUMENTS REQUIRED BY SECTION 718.503, FLORIDA STATUTES, TO BE FURNISHED BY A DEVELOPER TO A BUYER OR LESSEE. CASAMAR IS DEVELOPED BY PRH 900 NORTH OCEAN, LLC (DEVELOPER) AND ANY CASAMAR OFFERING IS MADE ONLY BY THE DEVELOPER'S PROSPECTUS FOR THE CONDOMINIUM. THE DEVELOPER IS NOT INCORPORATED IN, LOCATED IN, NOR A RESIDENT OF, NEW YORK. THIS IS NOT INTENDED TO BE AN OFFER TO SELL, OR SOLICITATION OF AN OFFER TO BUY, CONDOMINIUM UNITS IN NEW YORK OR TO RESIDENTS OF NEW YORK, OR IN ANY OTHER JURISDICTION WHERE PROHIBITED BY LAW UNLESS THE CONDOMINIUM IS REGISTERED IN SUCH JURISDICTIONS OR EXEMPT. NO STATEMENT SHOULD BE RELIED UPON IF NOT MADE IN THE DEVELOPER'S PROSPECTUS. ARCHITECTURAL DESIGN ELEMENTS MAY VARY FROM CONCEPT TO ACTUAL CONSTRUCTION. ALL DEPICTIONS ARE CONCEPTUAL. DEVELOPER, PURSUANT TO A LICENSE AGREEMENT HAS A RIGHT TO USE THE TRADE NAMES, MARKS, AND LOGOS OF THE RELATED GROUP. CONSULT THE DEVELOPER'S PROSPECTUS FOR ALL TERMS, CONDITIONS, SPECIFICATIONS, AND UNIT DIMENSIONS. REPRODUCTION FOR PRIVATE OR COMMERCIAL USE IS NOT AUTHORIZED. 2022 © PRH 900 NORTH OCEAN, LLC. UNLESS OTHERWISE NOTED, WITH ALL RIGHTS RESERVED.



CASAMAR

POMPANO BEACH

POMPANO BEACH LIKE YOU'VE NEVER SEEN

900 N OCEAN BLVD, POMPANO BEACH, FL 33062 | INQUIRIES 954.433.6080 | CASAMARBEACH.COM



FLOORPLAN

Model 106

LEVEL 1

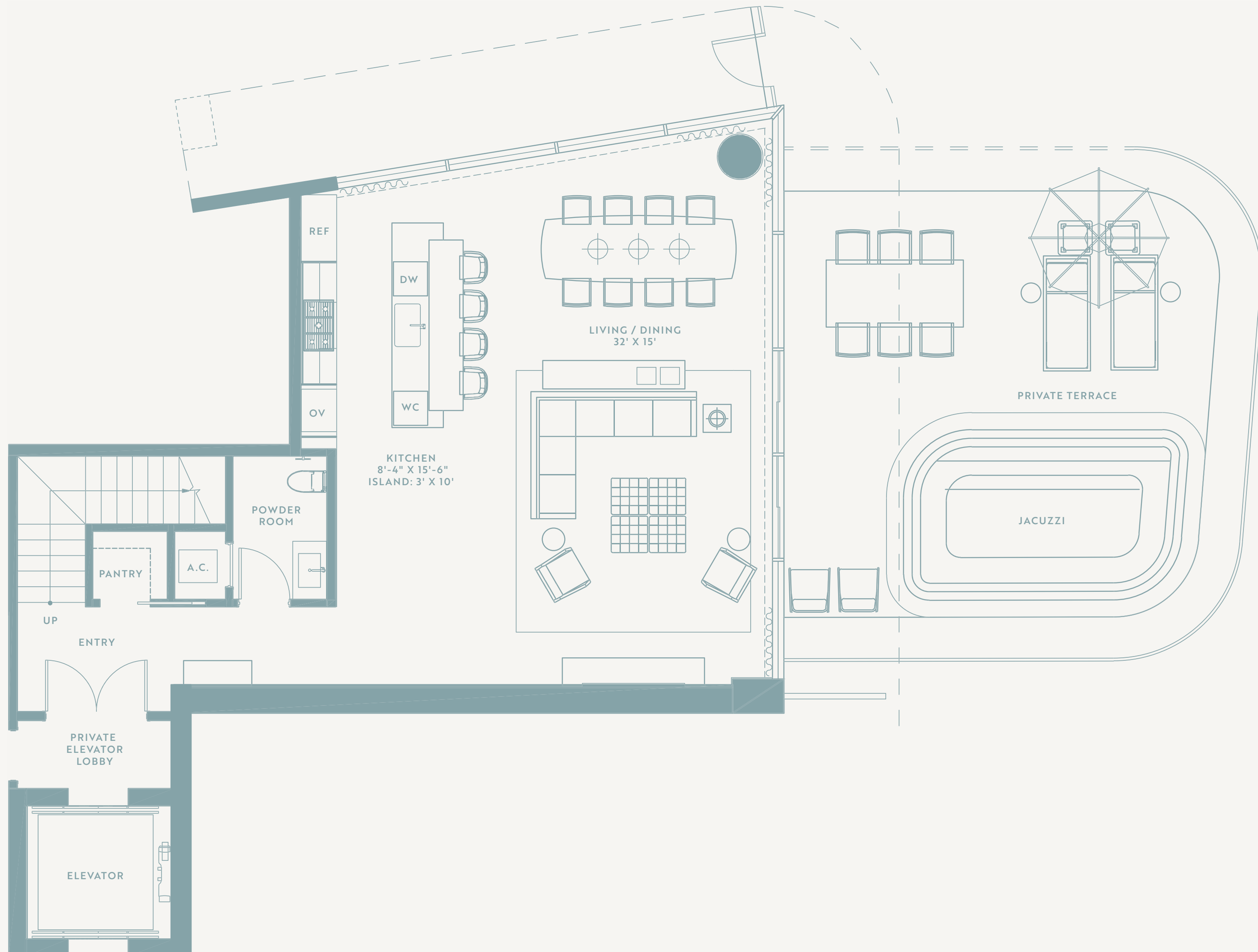
Model 106



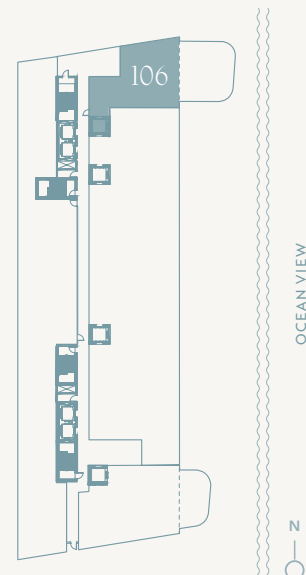
CASAMAR
POMPANO BEACH

3 Bedroom Townhouse Level 1

LEVEL 1 INTERIOR 1,244 SF | LEVEL 1 EXTERIOR 805 SF | LEVEL 1 TOTAL 2,049 SF
 LEVEL 2 INTERIOR 1,721 SF | LEVEL 2 EXTERIOR 438 SF | LEVEL 2 TOTAL 2,159 SF
 TOTAL INTERIOR 2,965 SF | TOTAL EXTERIOR 1,243 SF | TOTAL 4,208 SF



Key Plate



ORAL REPRESENTATIONS CANNOT BE RELIED UPON AS CORRECTLY STATING REPRESENTATIONS OF THE DEVELOPER. FOR CORRECT REPRESENTATIONS, MAKE REFERENCE TO THE DOCUMENTS REQUIRED BY SECTION 718.503, FLORIDA STATUTES, TO BE FURNISHED BY A DEVELOPER TO A BUYER OR LESSEE. CASAMAR IS DEVELOPED BY PRH 900 NORTH OCEAN, LLC (DEVELOPER) AND ANY CASAMAR OFFERING IS MADE ONLY BY THE DEVELOPER'S PROSPECTUS FOR THE CONDOMINIUM. THE DEVELOPER IS NOT INCORPORATED IN, LOCATED IN, NOR A RESIDENT OF, NEW YORK. THIS IS NOT INTENDED TO BE AN OFFER TO SELL, OR SOLICITATION OF AN OFFER TO BUY, CONDOMINIUM UNITS IN NEW YORK OR TO RESIDENTS OF NEW YORK, OR IN ANY OTHER JURISDICTION WHERE PROHIBITED BY LAW UNLESS THE CONDOMINIUM IS REGISTERED IN SUCH JURISDICTIONS OR EXEMPT. NO STATEMENT SHOULD BE RELIED UPON IF NOT MADE IN THE DEVELOPER'S PROSPECTUS. ARCHITECTURAL DESIGN ELEMENTS MAY VARY FROM CONCEPT TO ACTUAL CONSTRUCTION. ALL DEPICTIONS ARE CONCEPTUAL. DEVELOPER, PURSUANT TO A LICENSE AGREEMENT HAS A RIGHT TO USE THE TRADE NAMES, MARKS, AND LOGOS OF THE RELATED GROUP. CONSULT THE DEVELOPER'S PROSPECTUS FOR ALL TERMS, CONDITIONS, SPECIFICATIONS, AND UNIT DIMENSIONS. REPRODUCTION FOR PRIVATE OR COMMERCIAL USE IS NOT AUTHORIZED. 2022 © PRH 900 NORTH OCEAN, LLC. UNLESS OTHERWISE NOTED, WITH ALL RIGHTS RESERVED.



CASAMAR

POMPANO BEACH

POMPANO BEACH LIKE YOU'VE NEVER SEEN

900 N OCEAN BLVD, POMPANO BEACH, FL 33062 | INQUIRIES 954.433.6080 | CASAMARBEACH.COM



FLOORPLAN

Model 106 LEVEL 2

Model 106

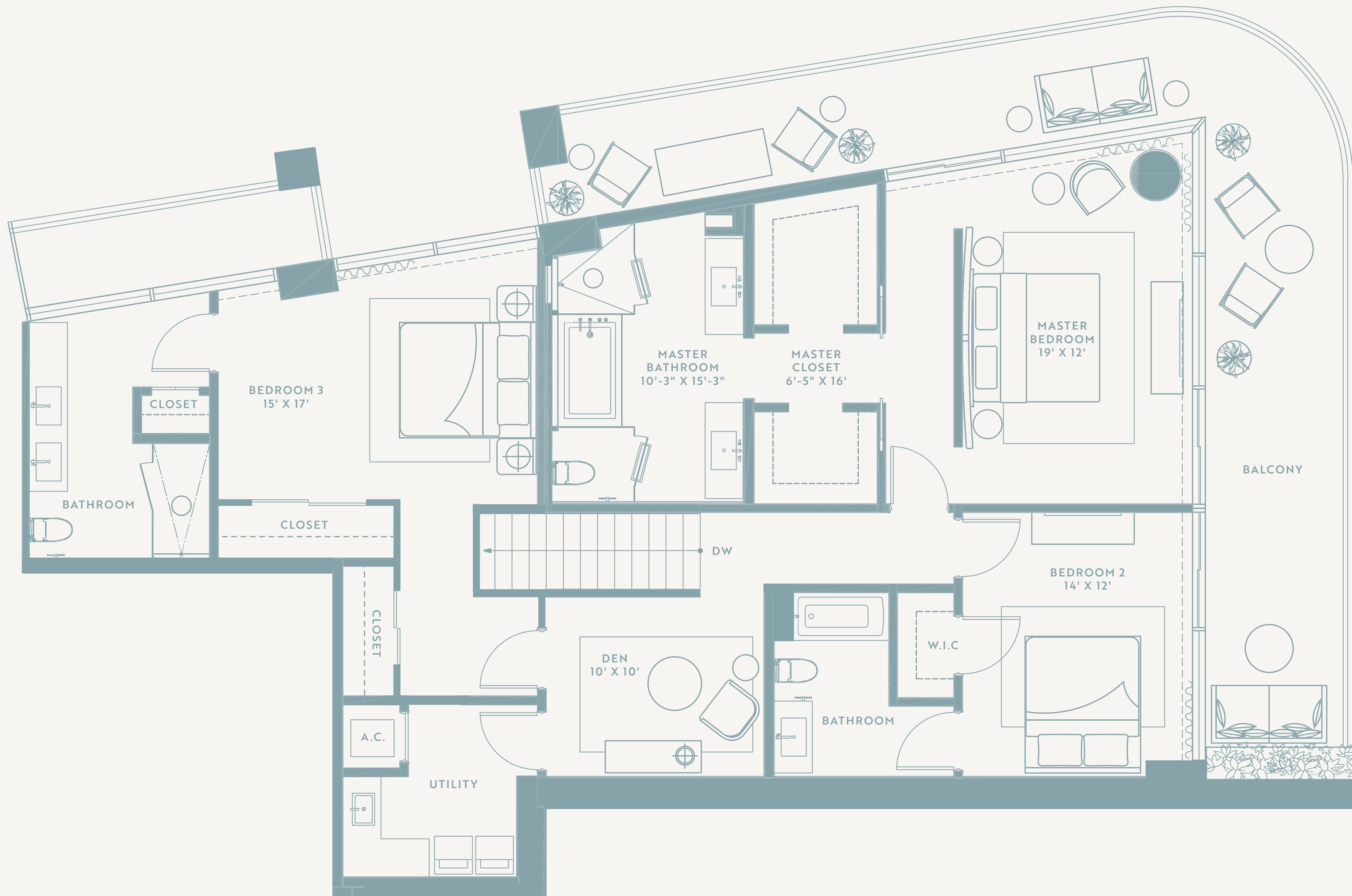


CASAMAR

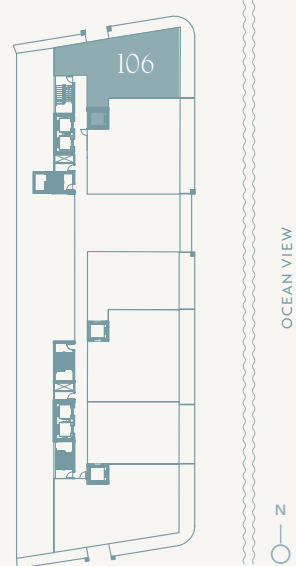
POMPANO BEACH

3 Bedroom Townhouse Level 2

LEVEL 1 INTERIOR 1,244 SF | LEVEL 1 EXTERIOR 805 SF | LEVEL 1 TOTAL 2,049 SF
 LEVEL 2 INTERIOR 1,721 SF | LEVEL 2 EXTERIOR 438 SF | LEVEL 2 TOTAL 2,159 SF
 TOTAL INTERIOR 2,965 SF | TOTAL EXTERIOR 1,243 SF | TOTAL 4,208 SF



Key Plate



ORAL REPRESENTATIONS CANNOT BE RELIED UPON AS CORRECTLY STATING REPRESENTATIONS OF THE DEVELOPER. FOR CORRECT REPRESENTATIONS, MAKE REFERENCE TO THE DOCUMENTS REQUIRED BY SECTION 718.503, FLORIDA STATUTES, TO BE FURNISHED BY A DEVELOPER TO A BUYER OR LESSEE. CASAMAR IS DEVELOPED BY PRH 900 NORTH OCEAN, LLC (DEVELOPER) AND ANY CASAMAR OFFERING IS MADE ONLY BY THE DEVELOPER'S PROSPECTUS FOR THE CONDOMINIUM. THE DEVELOPER IS NOT INCORPORATED IN, LOCATED IN, NOR A RESIDENT OF, NEW YORK. THIS IS NOT INTENDED TO BE AN OFFER TO SELL, OR SOLICITATION OF AN OFFER TO BUY, CONDOMINIUM UNITS IN NEW YORK OR TO RESIDENTS OF NEW YORK, OR IN ANY OTHER JURISDICTION WHERE PROHIBITED BY LAW UNLESS THE CONDOMINIUM IS REGISTERED IN SUCH JURISDICTIONS OR EXEMPT. NO STATEMENT SHOULD BE RELIED UPON IF NOT MADE IN THE DEVELOPER'S PROSPECTUS. ARCHITECTURAL DESIGN ELEMENTS MAY VARY FROM CONCEPT TO ACTUAL CONSTRUCTION. ALL DEPICTIONS ARE CONCEPTUAL. DEVELOPER, PURSUANT TO A LICENSE AGREEMENT HAS A RIGHT TO USE THE TRADE NAMES, MARKS, AND LOGOS OF THE RELATED GROUP. CONSULT THE DEVELOPER'S PROSPECTUS FOR ALL TERMS, CONDITIONS, SPECIFICATIONS, AND UNIT DIMENSIONS. REPRODUCTION FOR PRIVATE OR COMMERCIAL USE IS NOT AUTHORIZED. 2022 © PRH 900 NORTH OCEAN, LLC. UNLESS OTHERWISE NOTED WITH ALL RIGHTS RESERVED.



CASAMAR

POMPANO BEACH

POMPANO BEACH LIKE YOU'VE NEVER SEEN

900 N OCEAN BLVD, POMPANO BEACH, FL 33062 | INQUIRIES 954.433.6080 | CASAMARBEACH.COM



FLOORPLAN

Model 202

Model 202

FLOORPLAN



CASAMAR

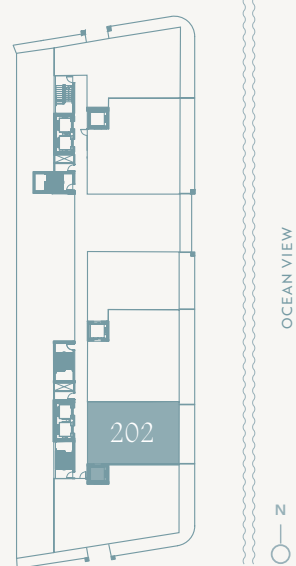
POMPANO BEACH

1 Bedroom + Den

INTERIOR 1,350 SF | EXTERIOR 163 SF | TOTAL 1,513 SF



Key Plate



ORAL REPRESENTATIONS CANNOT BE RELIED UPON AS CORRECTLY STATING REPRESENTATIONS OF THE DEVELOPER. FOR CORRECT REPRESENTATIONS, MAKE REFERENCE TO THE DOCUMENTS REQUIRED BY SECTION 718.503, FLORIDA STATUTES, TO BE FURNISHED BY A DEVELOPER TO A BUYER OR LESSEE. CASAMAR IS DEVELOPED BY PRH 900 NORTH OCEAN, LLC (DEVELOPER) AND ANY CASAMAR OFFERING IS MADE ONLY BY THE DEVELOPER'S PROSPECTUS FOR THE CONDOMINIUM. THE DEVELOPER IS NOT INCORPORATED IN, LOCATED IN, NOR A RESIDENT OF, NEW YORK. THIS IS NOT INTENDED TO BE AN OFFER TO SELL, OR SOLICITATION OF AN OFFER TO BUY, CONDOMINIUM UNITS IN NEW YORK OR TO RESIDENTS OF NEW YORK, OR IN ANY OTHER JURISDICTION WHERE PROHIBITED BY LAW UNLESS THE CONDOMINIUM IS REGISTERED IN SUCH JURISDICTIONS OR EXEMPT. NO STATEMENT SHOULD BE RELIED UPON IF NOT MADE IN THE DEVELOPER'S PROSPECTUS. ARCHITECTURAL DESIGN ELEMENTS MAY VARY FROM CONCEPT TO ACTUAL CONSTRUCTION. ALL DEPICTIONS ARE CONCEPTUAL. DEVELOPER, PURSUANT TO A LICENSE AGREEMENT HAS A RIGHT TO USE THE TRADE NAMES, MARKS, AND LOGOS OF THE RELATED GROUP. CONSULT THE DEVELOPER'S PROSPECTUS FOR ALL TERMS, CONDITIONS, SPECIFICATIONS, AND UNIT DIMENSIONS. REPRODUCTION FOR PRIVATE OR COMMERCIAL USE IS NOT AUTHORIZED. 2022 © PRH 900 NORTH OCEAN, LLC. UNLESS OTHERWISE NOTED, WITH ALL RIGHTS RESERVED.



CASAMAR

POMPANO BEACH



FLOORPLAN

Model 203

POMPANO BEACH LIKE YOU'VE NEVER SEEN

900 N OCEAN BLVD, POMPANO BEACH, FL 33062 | INQUIRIES 954.433.6080 | CASAMARBEACH.COM

Model 203

FLOORPLAN

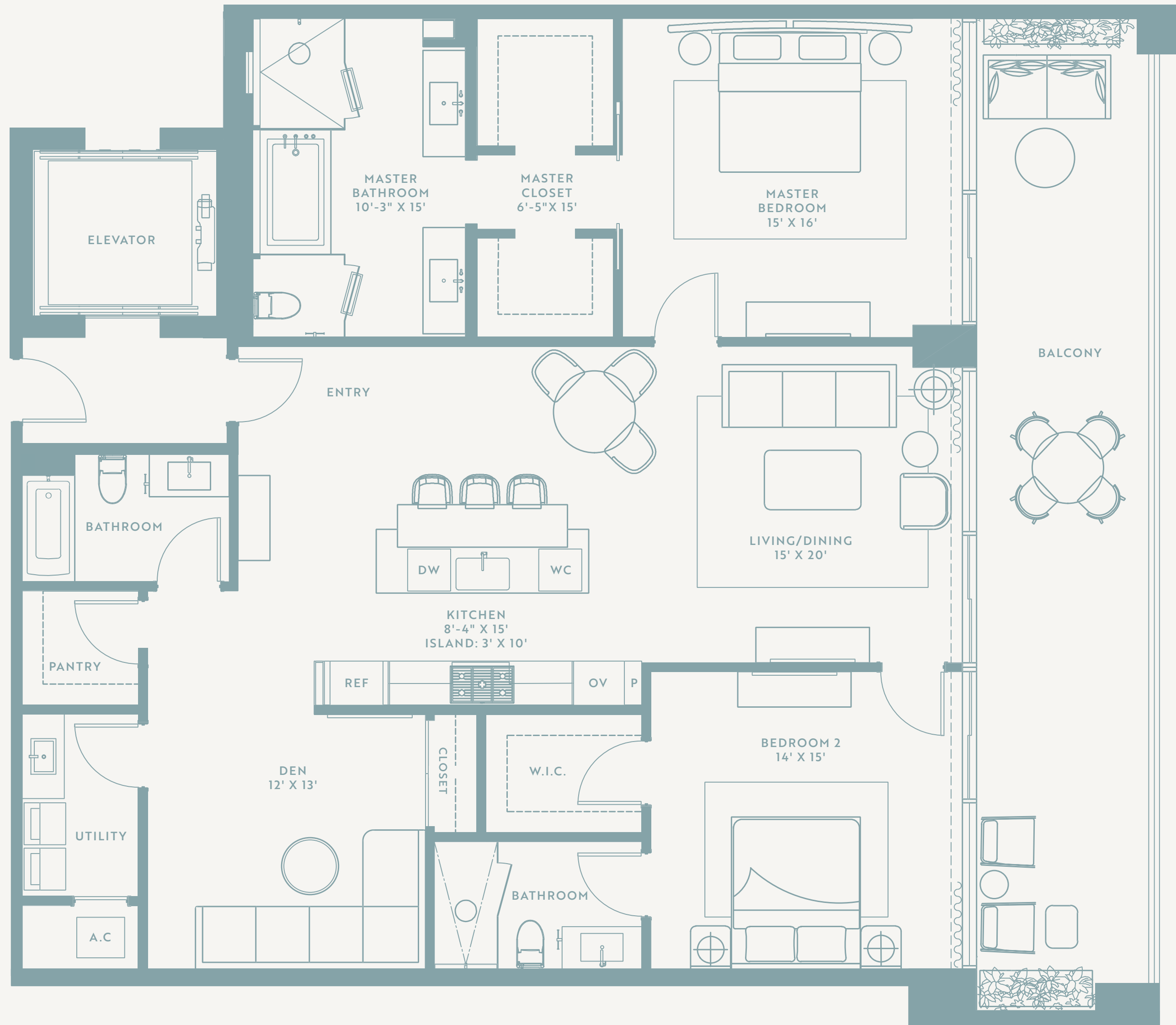


CASAMAR

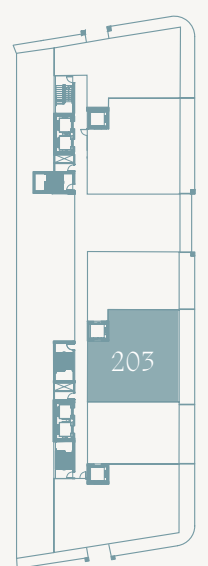
POMPANO BEACH

2 Bedroom + Den

INTERIOR 1,900 SF | EXTERIOR 265 SF | TOTAL 2,165 SF



Key Plate



OCEAN VIEW





CASAMAR

POMPANO BEACH



FLOORPLAN

Model 204

POMPANO BEACH LIKE YOU'VE NEVER SEEN

900 N OCEAN BLVD, POMPANO BEACH, FL 33062 | INQUIRIES 954.433.6080 | CASAMARBEACH.COM

Model 204 FLOORPLAN



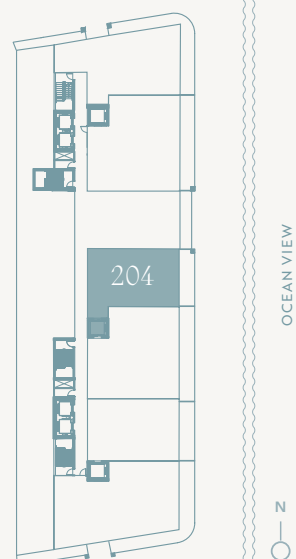
CASAMAR
POMPANO BEACH

1 Bedroom + Den

INTERIOR 1,330 SF | EXTERIOR 154 SF | TOTAL 1,484 SF



Key
Plate





CASAMAR

POMPANO BEACH



FLOORPLAN

Model 205

POMPANO BEACH LIKE YOU'VE NEVER SEEN

900 N OCEAN BLVD, POMPANO BEACH, FL 33062 | INQUIRIES 954.433.6080 | CASAMARBEACH.COM

Model 205

FLOORPLAN



CASAMAR

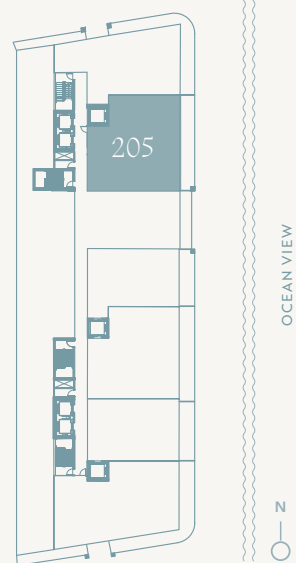
POMPANO BEACH

2 Bedroom + Den

INTERIOR 1,880 SF | EXTERIOR 265 SF | TOTAL 2,145 SF



Key Plate



ORAL REPRESENTATIONS CANNOT BE RELIED UPON AS CORRECTLY STATING REPRESENTATIONS OF THE DEVELOPER. FOR CORRECT REPRESENTATIONS, MAKE REFERENCE TO THE DOCUMENTS REQUIRED BY SECTION 718.503, FLORIDA STATUTES, TO BE FURNISHED BY A DEVELOPER TO A BUYER OR LESSEE. CASAMAR IS DEVELOPED BY PRH 900 NORTH OCEAN, LLC (DEVELOPER) AND ANY CASAMAR OFFERING IS MADE ONLY BY THE DEVELOPER'S PROSPECTUS FOR THE CONDOMINIUM. THE DEVELOPER IS NOT INCORPORATED IN, LOCATED IN, NOR A RESIDENT OF, NEW YORK. THIS IS NOT INTENDED TO BE AN OFFER TO SELL, OR SOLICITATION OF AN OFFER TO BUY, CONDOMINIUM UNITS IN NEW YORK OR TO RESIDENTS OF NEW YORK, OR IN ANY OTHER JURISDICTION WHERE PROHIBITED BY LAW UNLESS THE CONDOMINIUM IS REGISTERED IN SUCH JURISDICTIONS OR EXEMPT. NO STATEMENT SHOULD BE RELIED UPON IF NOT MADE IN THE DEVELOPER'S PROSPECTUS. ARCHITECTURAL DESIGN ELEMENTS MAY VARY FROM CONCEPT TO ACTUAL CONSTRUCTION. ALL DEPICTIONS ARE CONCEPTUAL. DEVELOPER, PURSUANT TO A LICENSE AGREEMENT HAS A RIGHT TO USE THE TRADE NAMES, MARKS, AND LOGOS OF THE RELATED GROUP. CONSULT THE DEVELOPER'S PROSPECTUS FOR ALL TERMS, CONDITIONS, SPECIFICATIONS, AND UNIT DIMENSIONS. REPRODUCTION FOR PRIVATE OR COMMERCIAL USE IS NOT AUTHORIZED. 2022 © PRH 900 NORTH OCEAN, LLC. UNLESS OTHERWISE NOTED, WITH ALL RIGHTS RESERVED.



CASAMAR

POMPANO BEACH



FLOORPLAN

Model 301

POMPANO BEACH LIKE YOU'VE NEVER SEEN

900 N OCEAN BLVD, POMPANO BEACH, FL 33062 | INQUIRIES 954.433.6080 | CASAMARBEACH.COM

Model 301

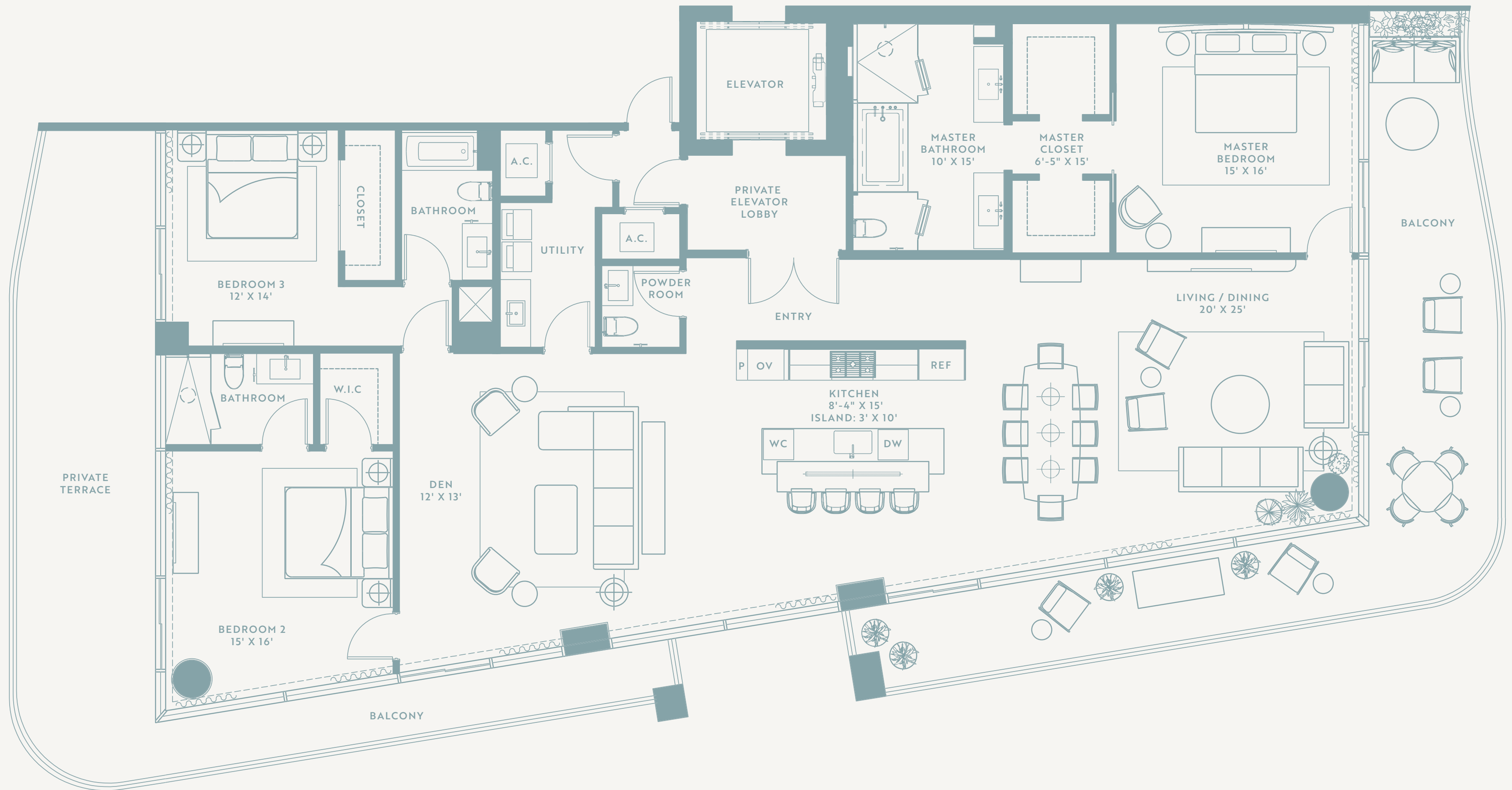


CASAMAR

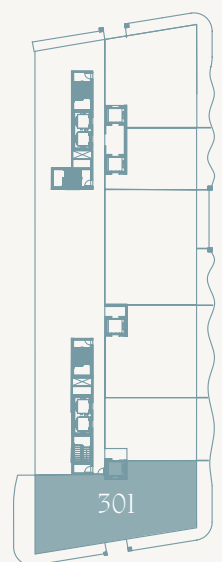
POMPAÑO BEACH

3 Bedroom + Den

INTERIOR 2,875 SF | EXTERIOR 1,008 SF | TOTAL 3,883 SF



Key Plate



OCEAN VIEW





CASAMAR

POMPANO BEACH

POMPANO BEACH LIKE YOU'VE NEVER SEEN

900 N OCEAN BLVD, POMPANO BEACH, FL 33062 | INQUIRIES 954.433.6080 | CASAMARBEACH.COM



FLOORPLAN

Model 302

Model 302

FLOORPLAN

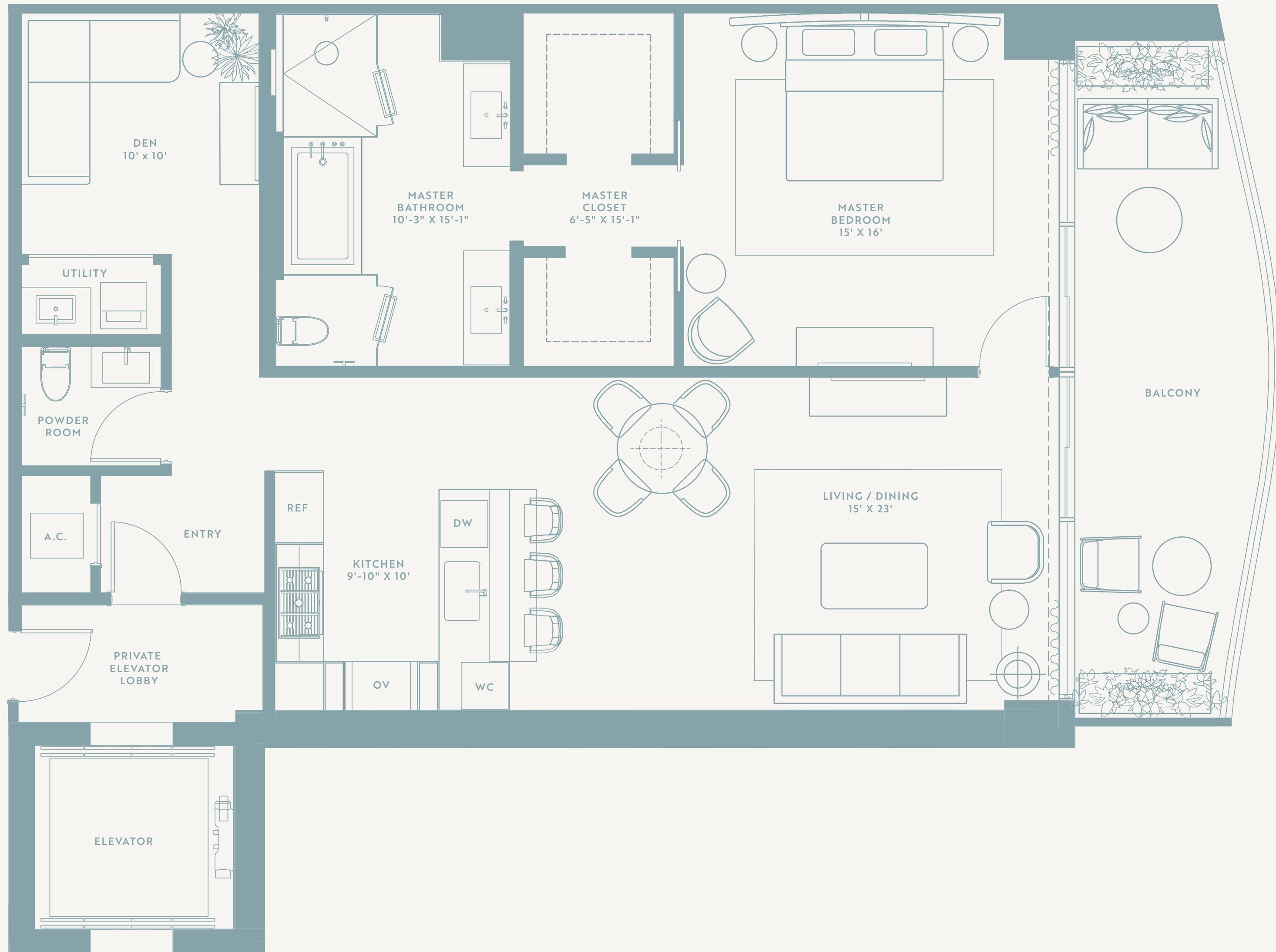


CASAMAR

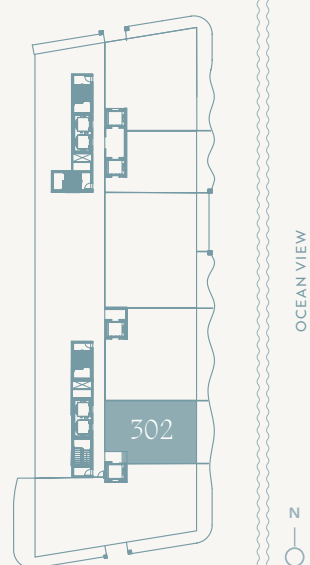
POMPANO BEACH

1 Bedroom + Den

INTERIOR 1,350 SF | EXTERIOR 256 SF | TOTAL 1,606 SF



Key Plate



ORAL REPRESENTATIONS CANNOT BE RELIED UPON AS CORRECTLY STATING REPRESENTATIONS OF THE DEVELOPER. FOR CORRECT REPRESENTATIONS, MAKE REFERENCE TO THE DOCUMENTS REQUIRED BY SECTION 718.503, FLORIDA STATUTES, TO BE FURNISHED BY A DEVELOPER TO A BUYER OR LESSEE. CASAMAR IS DEVELOPED BY PRH 900 NORTH OCEAN, LLC (DEVELOPER) AND ANY CASAMAR OFFERING IS MADE ONLY BY THE DEVELOPER'S PROSPECTUS FOR THE CONDOMINIUM. THE DEVELOPER IS NOT INCORPORATED IN, LOCATED IN, NOR A RESIDENT OF, NEW YORK. THIS IS NOT INTENDED TO BE AN OFFER TO SELL, OR SOLICITATION OF AN OFFER TO BUY, CONDOMINIUM UNITS IN NEW YORK OR TO RESIDENTS OF NEW YORK, OR IN ANY OTHER JURISDICTION WHERE PROHIBITED BY LAW UNLESS THE CONDOMINIUM IS REGISTERED IN SUCH JURISDICTIONS OR EXEMPT. NO STATEMENT SHOULD BE RELIED UPON IF NOT MADE IN THE DEVELOPER'S PROSPECTUS. ARCHITECTURAL DESIGN ELEMENTS MAY VARY FROM CONCEPT TO ACTUAL CONSTRUCTION. ALL DEPICTIONS ARE CONCEPTUAL. DEVELOPER, PURSUANT TO A LICENSE AGREEMENT HAS A RIGHT TO USE THE TRADE NAMES, MARKS, AND LOGOS OF THE RELATED GROUP. CONSULT THE DEVELOPER'S PROSPECTUS FOR ALL TERMS, CONDITIONS, SPECIFICATIONS, AND UNIT DIMENSIONS. REPRODUCTION FOR PRIVATE OR COMMERCIAL USE IS NOT AUTHORIZED. 2022 © PRH 900 NORTH OCEAN, LLC. UNLESS OTHERWISE NOTED WITH ALL RIGHTS RESERVED.



CASAMAR

POMPANO BEACH

POMPANO BEACH LIKE YOU'VE NEVER SEEN

900 N OCEAN BLVD, POMPANO BEACH, FL 33062 | INQUIRIES 954.433.6080 | CASAMARBEACH.COM



FLOORPLAN

Model 303

Model 303

FLOORPLAN



CASAMAR

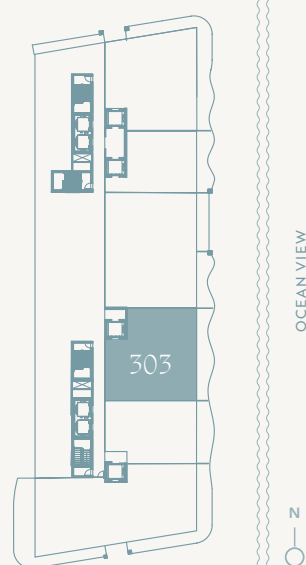
POMPANO BEACH

2 Bedroom + Den

INTERIOR 1,900 SF | EXTERIOR 330 SF | TOTAL 2,230 SF



Key Plate



ORAL REPRESENTATIONS CANNOT BE RELIED UPON AS CORRECTLY STATING REPRESENTATIONS OF THE DEVELOPER. FOR CORRECT REPRESENTATIONS, MAKE REFERENCE TO THE DOCUMENTS REQUIRED BY SECTION 718.503, FLORIDA STATUTES, TO BE FURNISHED BY A DEVELOPER TO A BUYER OR LESSEE. CASAMAR IS DEVELOPED BY PRH 900 NORTH OCEAN, LLC (DEVELOPER) AND ANY CASAMAR OFFERING IS MADE ONLY BY THE DEVELOPER'S PROSPECTUS FOR THE CONDOMINIUM. THE DEVELOPER IS NOT INCORPORATED IN, LOCATED IN, NOR A RESIDENT OF, NEW YORK. THIS IS NOT INTENDED TO BE AN OFFER TO SELL, OR SOLICITATION OF AN OFFER TO BUY, CONDOMINIUM UNITS IN NEW YORK OR TO RESIDENTS OF NEW YORK, OR IN ANY OTHER JURISDICTION WHERE PROHIBITED BY LAW UNLESS THE CONDOMINIUM IS REGISTERED IN SUCH JURISDICTIONS OR EXEMPT. NO STATEMENT SHOULD BE RELIED UPON IF NOT MADE IN THE DEVELOPER'S PROSPECTUS. ARCHITECTURAL DESIGN ELEMENTS MAY VARY FROM CONCEPT TO ACTUAL CONSTRUCTION. ALL DEPICTIONS ARE CONCEPTUAL. DEVELOPER, PURSUANT TO A LICENSE AGREEMENT HAS A RIGHT TO USE THE TRADE NAMES, MARKS, AND LOGOS OF THE RELATED GROUP. CONSULT THE DEVELOPER'S PROSPECTUS FOR ALL TERMS, CONDITIONS, SPECIFICATIONS, AND UNIT DIMENSIONS. REPRODUCTION FOR PRIVATE OR COMMERCIAL USE IS NOT AUTHORIZED. 2022 © PRH 900 NORTH OCEAN, LLC. UNLESS OTHERWISE NOTED, WITH ALL RIGHTS RESERVED.



CASAMAR

POMPANO BEACH

POMPANO BEACH LIKE YOU'VE NEVER SEEN

900 N OCEAN BLVD, POMPANO BEACH, FL 33062 | INQUIRIES 954.433.6080 | CASAMARBEACH.COM



FLOORPLAN

Model 305

Model 305

FLOORPLAN

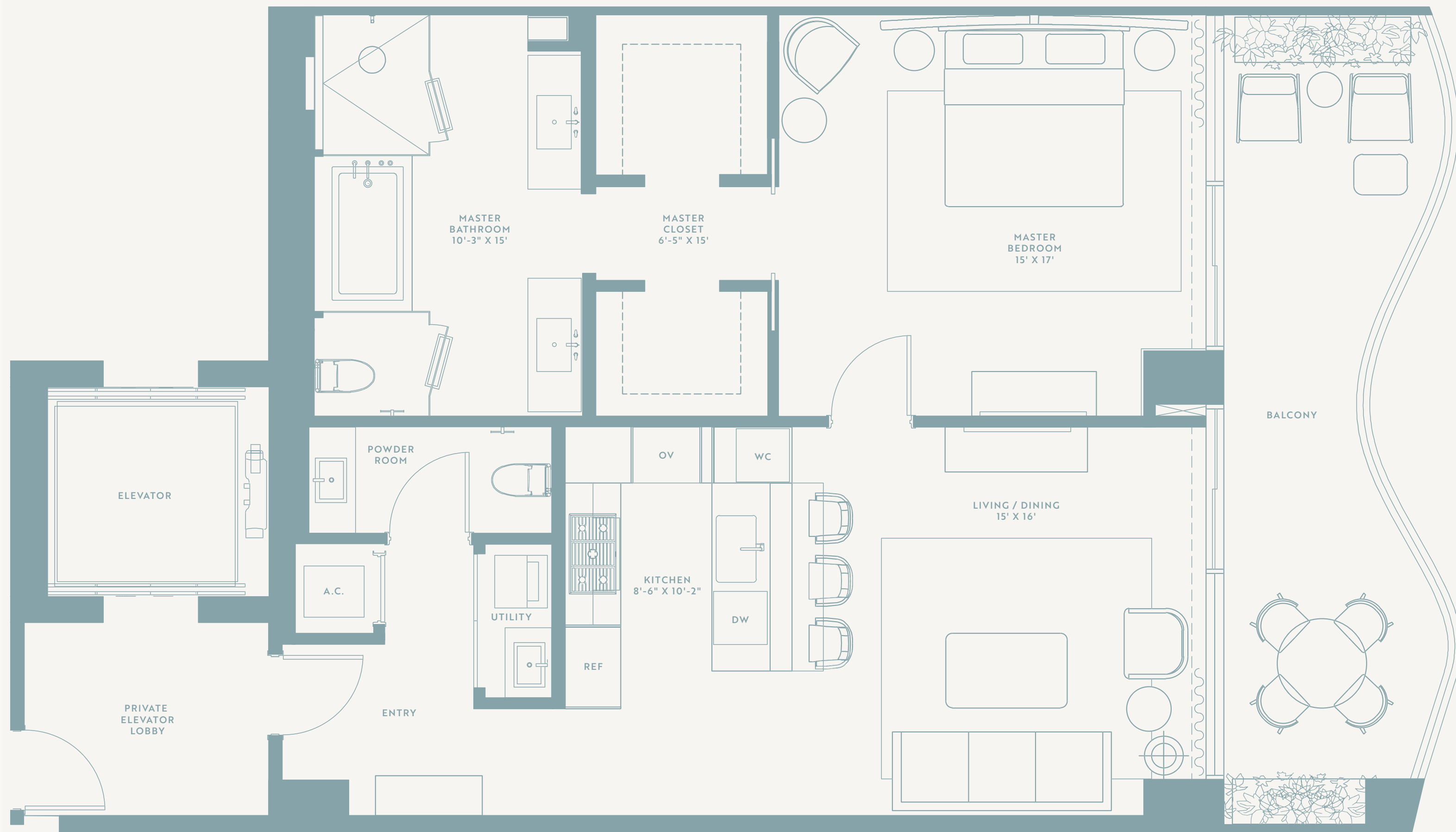


CASAMAR

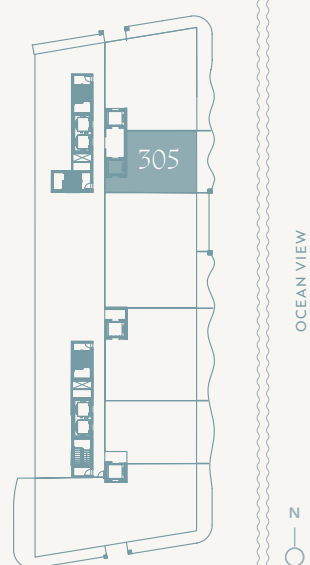
POMPAÑO BEACH

2 Bedroom + Den

INTERIOR 1,085 SF | EXTERIOR 226 SF | TOTAL 1,311 SF



Key Plate



ORAL REPRESENTATIONS CANNOT BE RELIED UPON AS CORRECTLY STATING REPRESENTATIONS OF THE DEVELOPER. FOR CORRECT REPRESENTATIONS, MAKE REFERENCE TO THE DOCUMENTS REQUIRED BY SECTION 718.503, FLORIDA STATUTES, TO BE FURNISHED BY A DEVELOPER TO A BUYER OR LESSEE. CASAMAR IS DEVELOPED BY PRH 900 NORTH OCEAN, LLC (DEVELOPER) AND ANY CASAMAR OFFERING IS MADE ONLY BY THE DEVELOPER'S PROSPECTUS FOR THE CONDOMINIUM. THE DEVELOPER IS NOT INCORPORATED IN, LOCATED IN, NOR A RESIDENT OF, NEW YORK. THIS IS NOT INTENDED TO BE AN OFFER TO SELL, OR SOLICITATION OF AN OFFER TO BUY, CONDOMINIUM UNITS IN NEW YORK OR TO RESIDENTS OF NEW YORK, OR IN ANY OTHER JURISDICTION WHERE PROHIBITED BY LAW UNLESS THE CONDOMINIUM IS REGISTERED IN SUCH JURISDICTIONS OR EXEMPT. NO STATEMENT SHOULD BE RELIED UPON IF NOT MADE IN THE DEVELOPER'S PROSPECTUS. ARCHITECTURAL DESIGN ELEMENTS MAY VARY FROM CONCEPT TO ACTUAL CONSTRUCTION. ALL DEPICTIONS ARE CONCEPTUAL. DEVELOPER, PURSUANT TO A LICENSE AGREEMENT HAS A RIGHT TO USE THE TRADE NAMES, MARKS, AND LOGOS OF THE RELATED GROUP. CONSULT THE DEVELOPER'S PROSPECTUS FOR ALL TERMS, CONDITIONS, SPECIFICATIONS, AND UNIT DIMENSIONS. REPRODUCTION FOR PRIVATE OR COMMERCIAL USE IS NOT AUTHORIZED. 2022 © PRH 900 NORTH OCEAN, LLC. UNLESS OTHERWISE NOTED, WITH ALL RIGHTS RESERVED.



CASAMAR

POMPANO BEACH



FLOORPLAN

Model 306

POMPANO BEACH LIKE YOU'VE NEVER SEEN

900 N OCEAN BLVD, POMPANO BEACH, FL 33062 | INQUIRIES 954.433.6080 | CASAMARBEACH.COM

Model 306

FLOORPLAN

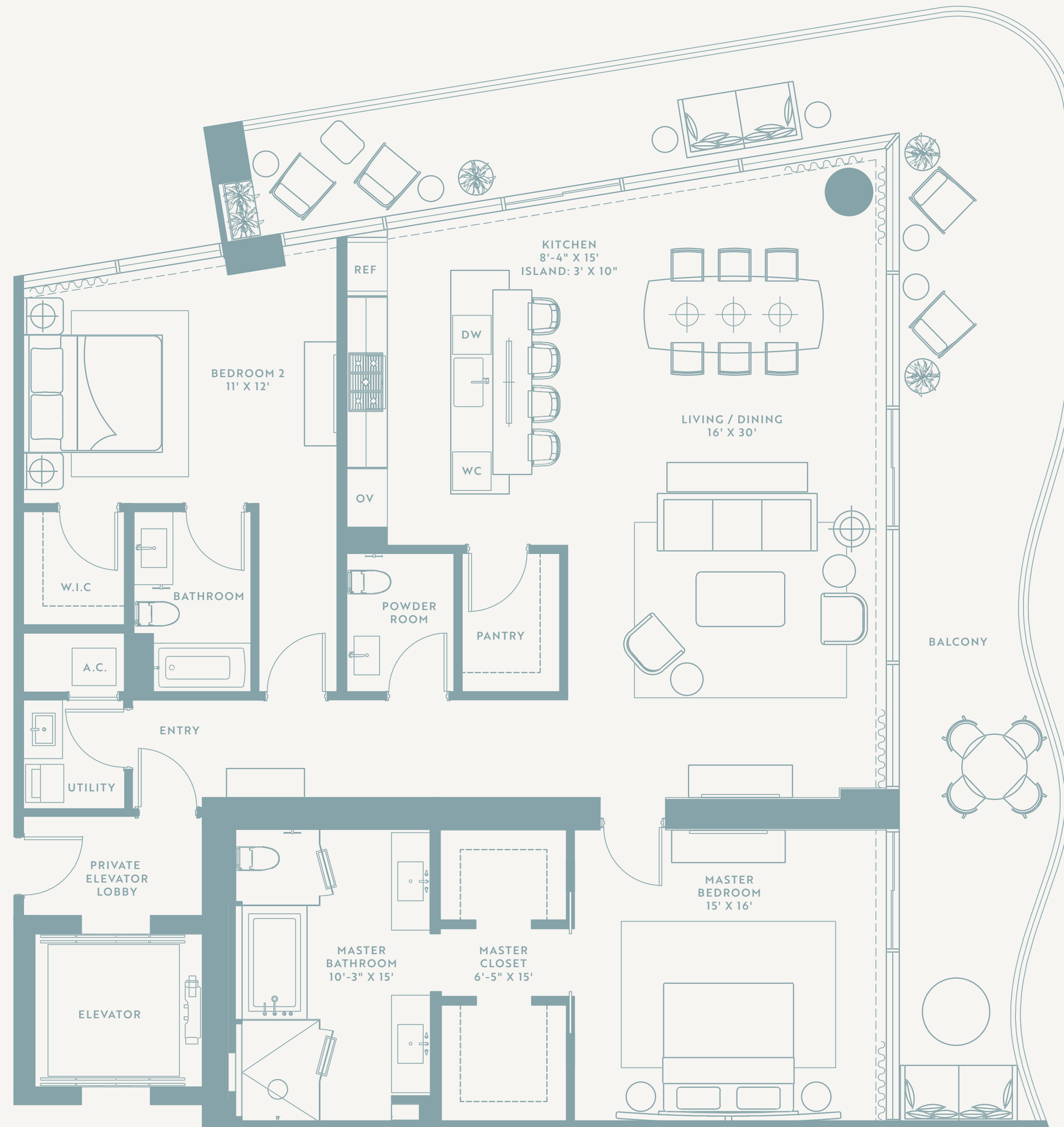


CASAMAR

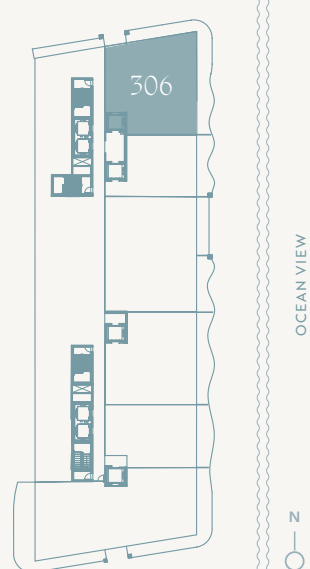
POMPAÑO BEACH

2 Bedroom + Den

INTERIOR 2,050 SF | EXTERIOR 616 SF | TOTAL 2,666 SF



Key Plate



ORAL REPRESENTATIONS CANNOT BE RELIED UPON AS CORRECTLY STATING REPRESENTATIONS OF THE DEVELOPER. FOR CORRECT REPRESENTATIONS, MAKE REFERENCE TO THE DOCUMENTS REQUIRED BY SECTION 718.503, FLORIDA STATUTES, TO BE FURNISHED BY A DEVELOPER TO A BUYER OR LESSEE. CASAMAR IS DEVELOPED BY PRH 900 NORTH OCEAN, LLC (DEVELOPER) AND ANY CASAMAR OFFERING IS MADE ONLY BY THE DEVELOPER'S PROSPECTUS FOR THE CONDOMINIUM. THE DEVELOPER IS NOT INCORPORATED IN, LOCATED IN, NOR A RESIDENT OF, NEW YORK. THIS IS NOT INTENDED TO BE AN OFFER TO SELL, OR SOLICITATION OF AN OFFER TO BUY, CONDOMINIUM UNITS IN NEW YORK OR TO RESIDENTS OF NEW YORK, OR IN ANY OTHER JURISDICTION WHERE PROHIBITED BY LAW UNLESS THE CONDOMINIUM IS REGISTERED IN SUCH JURISDICTIONS OR EXEMPT. NO STATEMENT SHOULD BE RELIED UPON IF NOT MADE IN THE DEVELOPER'S PROSPECTUS. ARCHITECTURAL DESIGN ELEMENTS MAY VARY FROM CONCEPT TO ACTUAL CONSTRUCTION. ALL DEPICTIONS ARE CONCEPTUAL. DEVELOPER, PURSUANT TO A LICENSE AGREEMENT HAS A RIGHT TO USE THE TRADE NAMES, MARKS, AND LOGOS OF THE RELATED GROUP. CONSULT THE DEVELOPER'S PROSPECTUS FOR ALL TERMS, CONDITIONS, SPECIFICATIONS, AND UNIT DIMENSIONS. REPRODUCTION FOR PRIVATE OR COMMERCIAL USE IS NOT AUTHORIZED. 2022 © PRH 900 NORTH OCEAN, LLC. UNLESS OTHERWISE NOTED, WITH ALL RIGHTS RESERVED.

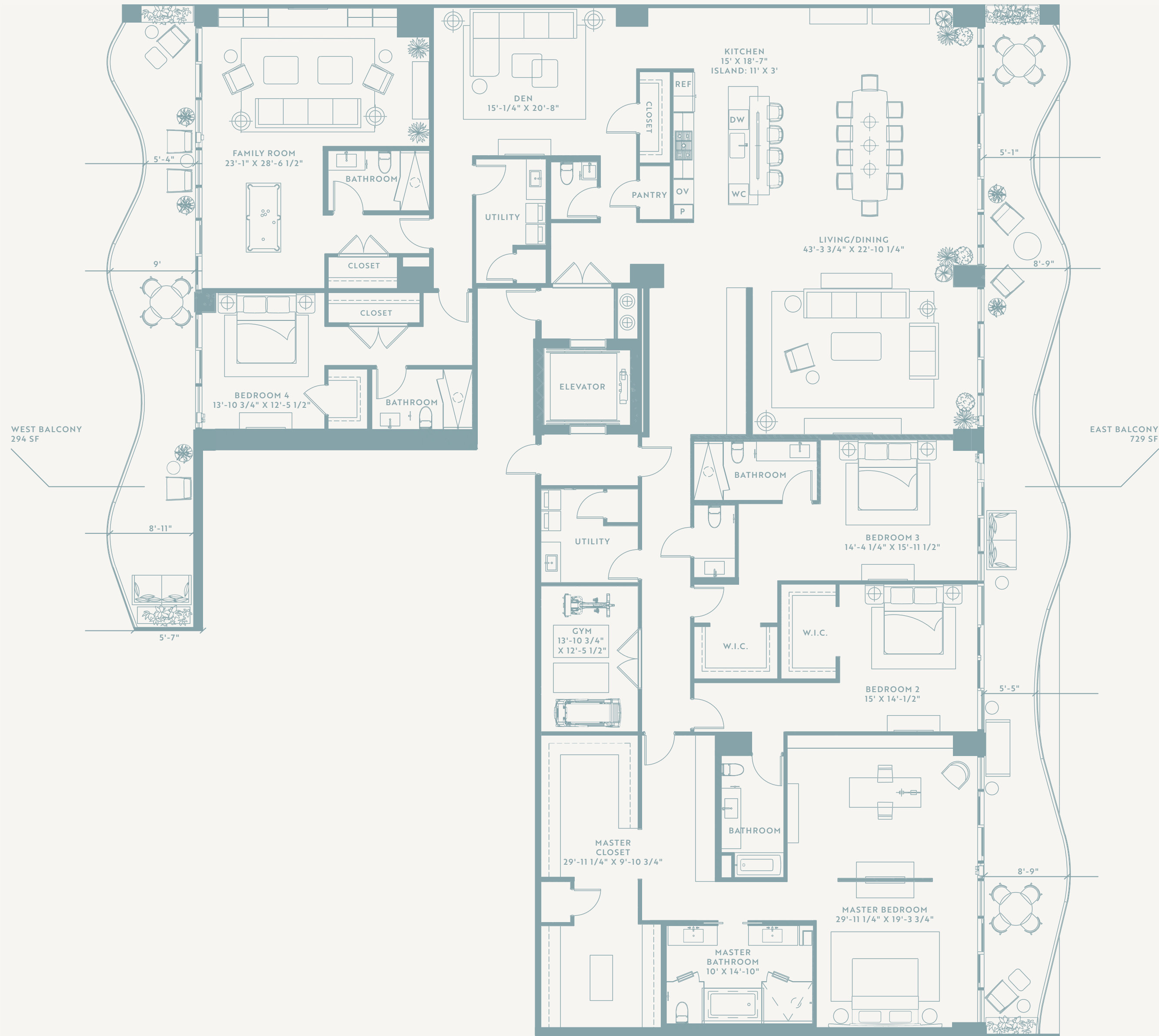
Model 02/03 FLOORPLAN



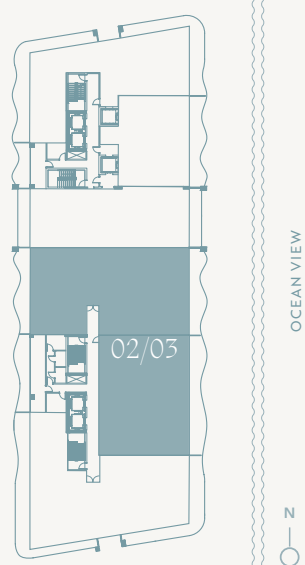
CASAMAR
POMPAÑO BEACH

4 Bedroom + Den

INTERIOR 6,068 SF | EXTERIOR 1,023 SF | TOTAL 7,091 SF



Key
Plate



ORAL REPRESENTATIONS CANNOT BE RELIED UPON AS CORRECTLY STATING REPRESENTATIONS OF THE DEVELOPER. FOR CORRECT REPRESENTATIONS, MAKE REFERENCE TO THE DOCUMENTS REQUIRED BY SECTION 718.503, FLORIDA STATUTES, TO BE FURNISHED BY A DEVELOPER TO A BUYER OR LESSEE. CASAMAR IS DEVELOPED BY PRH 900 NORTH OCEAN, LLC (DEVELOPER) AND ANY CASAMAR OFFERING IS MADE ONLY BY THE DEVELOPER'S PROSPECTUS FOR THE CONDOMINIUM. THE DEVELOPER IS NOT INCORPORATED IN, LOCATED IN, NOR A RESIDENT OF, NEW YORK. THIS IS NOT INTENDED TO BE AN OFFER TO SELL, OR SOLICITATION OF AN OFFER TO BUY, CONDOMINIUM UNITS IN NEW YORK OR TO RESIDENTS OF NEW YORK, OR IN ANY OTHER JURISDICTION WHERE PROHIBITED BY LAW UNLESS THE CONDOMINIUM IS REGISTERED IN SUCH JURISDICTIONS OR EXEMPT. NO STATEMENT SHOULD BE RELIED UPON IF NOT MADE IN THE DEVELOPER'S PROSPECTUS. ARCHITECTURAL DESIGN ELEMENTS MAY VARY FROM CONCEPT TO ACTUAL CONSTRUCTION. ALL DEPICTIONS ARE CONCEPTUAL. DEVELOPER, PURSUANT TO A LICENSE AGREEMENT HAS A RIGHT TO USE THE TRADE NAMES, MARKS, AND LOGOS OF THE RELATED GROUP. CONSULT THE DEVELOPER'S PROSPECTUS FOR ALL TERMS, CONDITIONS, SPECIFICATIONS, AND UNIT DIMENSIONS. REPRODUCTION FOR PRIVATE OR COMMERCIAL USE IS NOT AUTHORIZED. 2022 © PRH 900 NORTH OCEAN, LLC. UNLESS OTHERWISE NOTED, WITH ALL RIGHTS RESERVED.

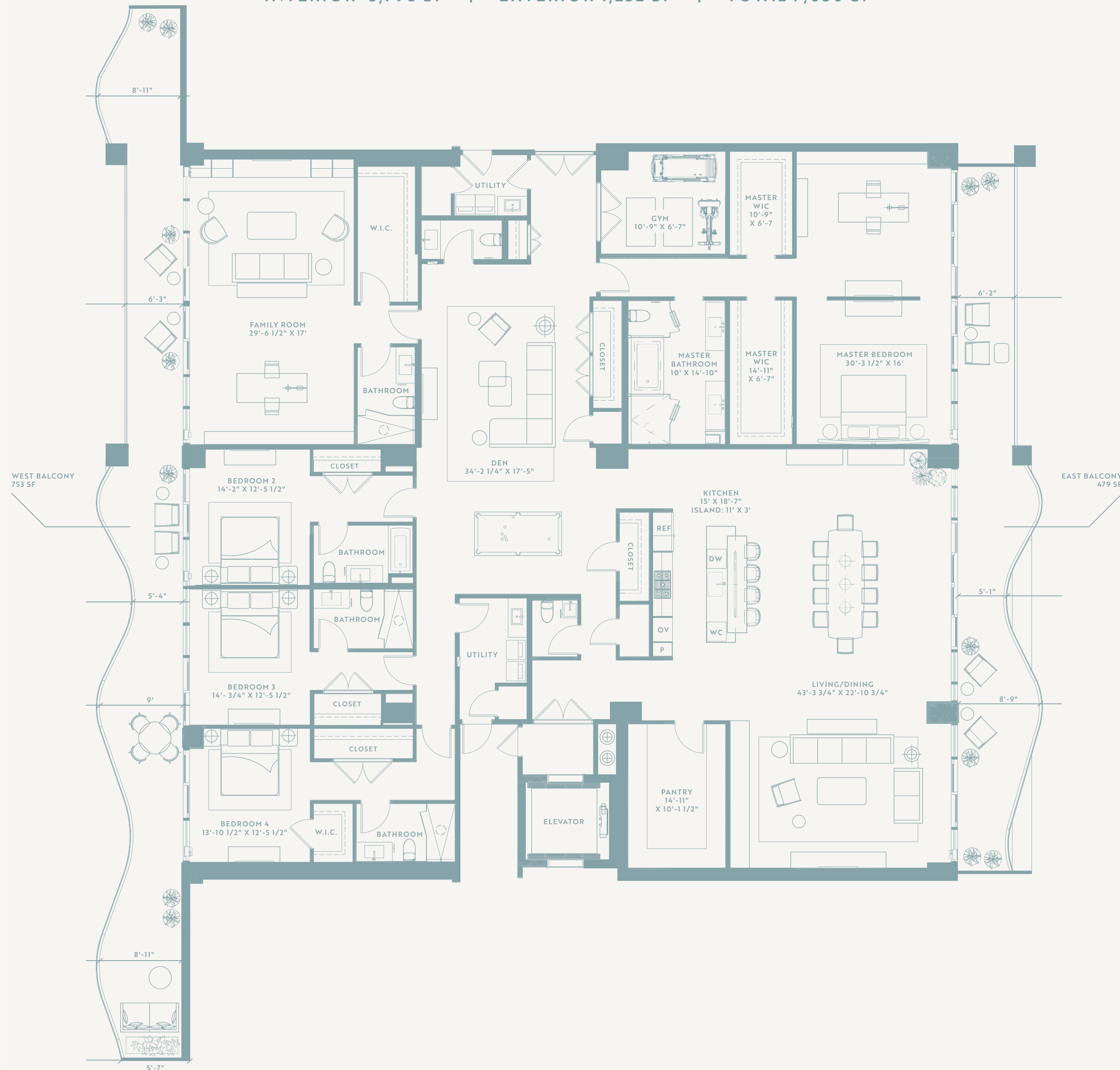
Model 03/04 FLOORPLAN



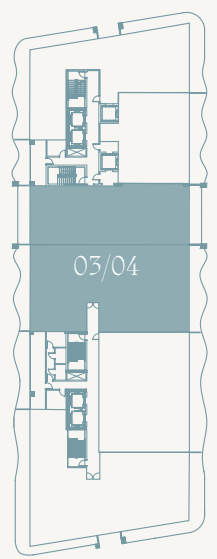
CASAMAR
POMPANO BEACH

4 Bedroom + Den

INTERIOR 5,798 SF | EXTERIOR 1,232 SF | TOTAL 7,030 SF



Key
Plate





CASAMAR

POMPANO BEACH



FLOORPLAN

Model 01

POMPANO BEACH LIKE YOU'VE NEVER SEEN

900 N OCEAN BLVD, POMPANO BEACH, FL 33062 | INQUIRIES 954.433.6080 | CASAMARBEACH.COM

Model 01

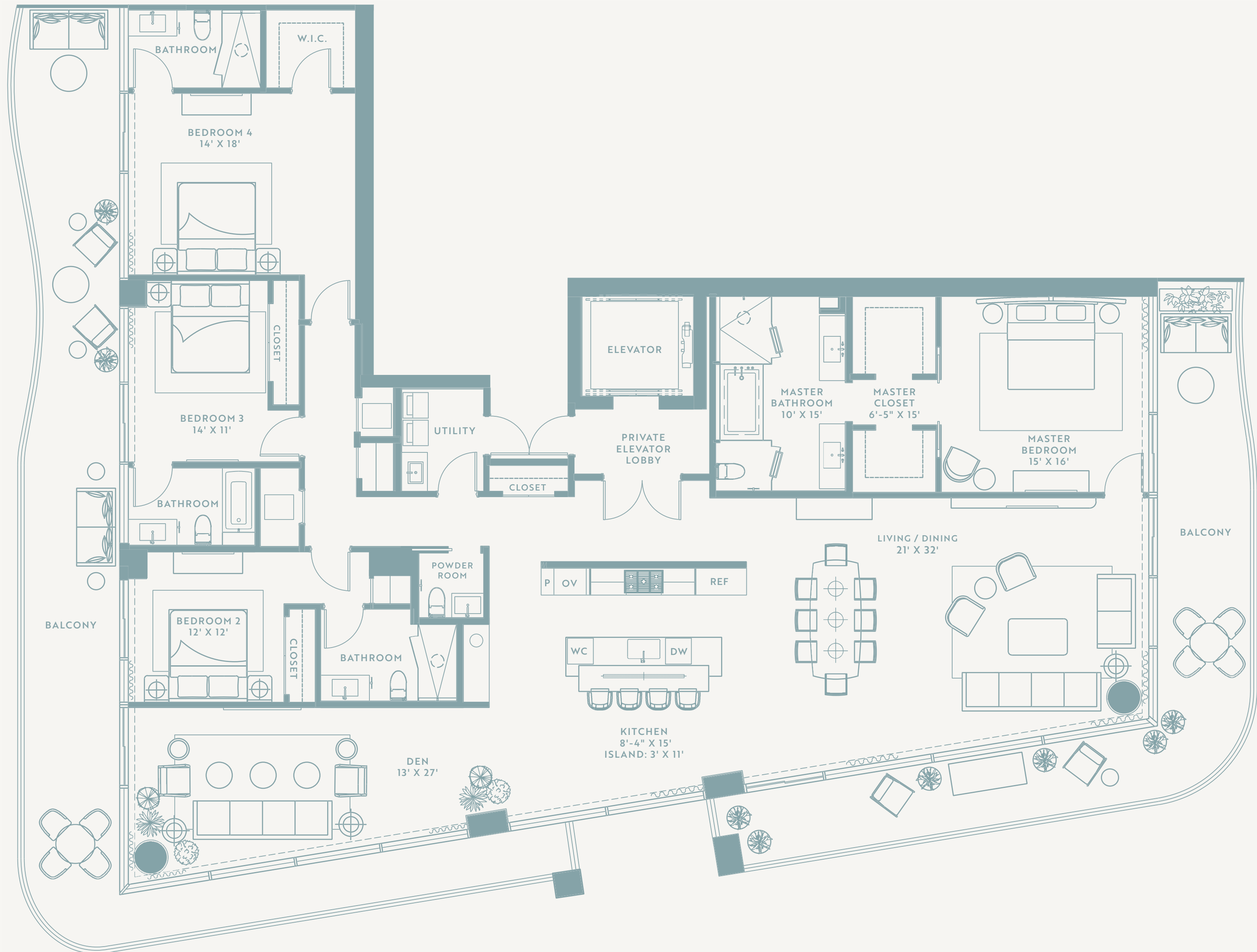
FLOORPLAN



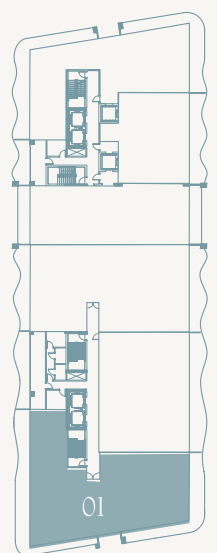
CASAMAR
POMPANO BEACH

4 Bedroom + Den

INTERIOR 3,390 SF | EXTERIOR 1,290 SF | TOTAL 4,680 SF



Key
Plate





CASAMAR

POMPANO BEACH



FLOORPLAN

Model 02

POMPANO BEACH LIKE YOU'VE NEVER SEEN

900 N OCEAN BLVD, POMPANO BEACH, FL 33062 | INQUIRIES 954.433.6080 | CASAMARBEACH.COM

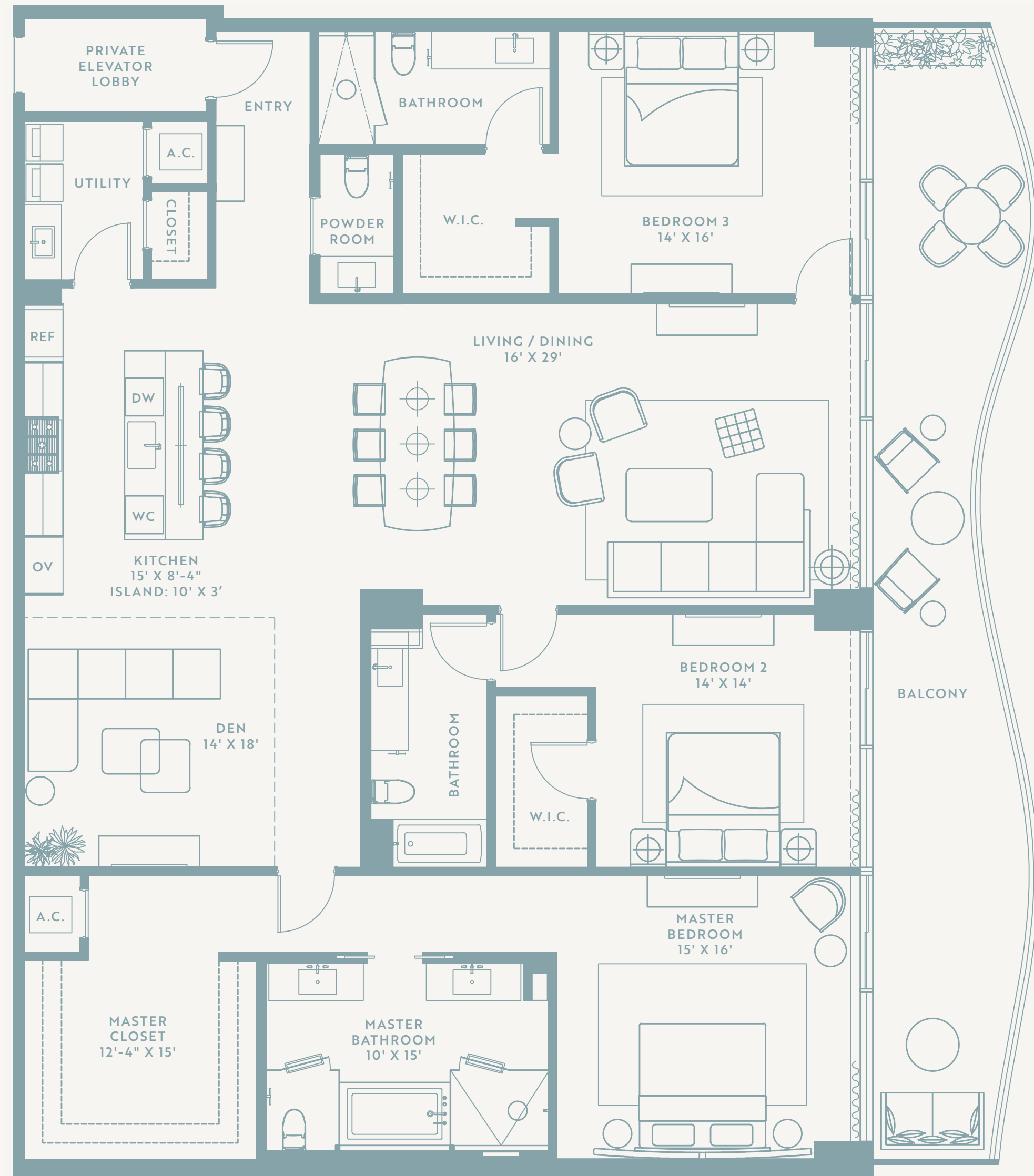
Model 02



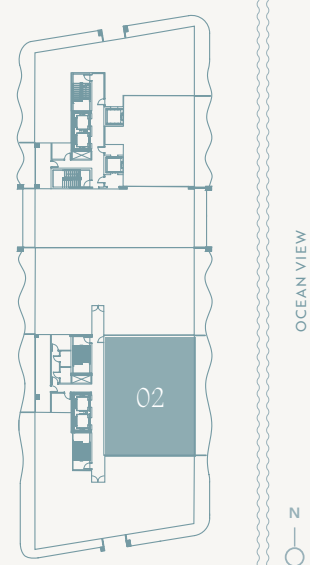
CASAMAR
POMPANO BEACH

3 Bedroom + Den

INTERIOR 2,760 SF | EXTERIOR 447 SF | TOTAL 3,207 SF



Key Plate



ORAL REPRESENTATIONS CANNOT BE RELIED UPON AS CORRECTLY STATING REPRESENTATIONS OF THE DEVELOPER. FOR CORRECT REPRESENTATIONS, MAKE REFERENCE TO THE DOCUMENTS REQUIRED BY SECTION 718.503, FLORIDA STATUTES, TO BE FURNISHED BY A DEVELOPER TO A BUYER OR LESSEE. CASAMAR IS DEVELOPED BY PRH 900 NORTH OCEAN, LLC (DEVELOPER) AND ANY CASAMAR OFFERING IS MADE ONLY BY THE DEVELOPER'S PROSPECTUS FOR THE CONDOMINIUM. THE DEVELOPER IS NOT INCORPORATED IN, LOCATED IN, NOR A RESIDENT OF, NEW YORK. THIS IS NOT INTENDED TO BE AN OFFER TO SELL, OR SOLICITATION OF AN OFFER TO BUY, CONDOMINIUM UNITS IN NEW YORK OR TO RESIDENTS OF NEW YORK, OR IN ANY OTHER JURISDICTION WHERE PROHIBITED BY LAW UNLESS THE CONDOMINIUM IS REGISTERED IN SUCH JURISDICTIONS OR EXEMPT. NO STATEMENT SHOULD BE RELIED UPON IF NOT MADE IN THE DEVELOPER'S PROSPECTUS. ARCHITECTURAL DESIGN ELEMENTS MAY VARY FROM CONCEPT TO ACTUAL CONSTRUCTION. ALL DEPICTIONS ARE CONCEPTUAL. DEVELOPER, PURSUANT TO A LICENSE AGREEMENT HAS A RIGHT TO USE THE TRADE NAMES, MARKS, AND LOGOS OF THE RELATED GROUP. CONSULT THE DEVELOPER'S PROSPECTUS FOR ALL TERMS, CONDITIONS, SPECIFICATIONS, AND UNIT DIMENSIONS. REPRODUCTION FOR PRIVATE OR COMMERCIAL USE IS NOT AUTHORIZED. 2022 © PRH 900 NORTH OCEAN, LLC. UNLESS OTHERWISE NOTED, WITH ALL RIGHTS RESERVED.



CASAMAR

POMPANO BEACH



FLOORPLAN

Model 03

POMPANO BEACH LIKE YOU'VE NEVER SEEN

900 N OCEAN BLVD, POMPANO BEACH, FL 33062 | INQUIRIES 954.433.6080 | CASAMARBEACH.COM

Model 03



CASAMAR

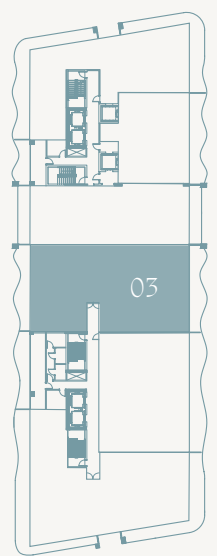
POMPANO BEACH

4 Bedroom + Den

INTERIOR 3,300 SF | EXTERIOR 618 SF | TOTAL 3,918 SF



Key Plate



OCEAN VIEW





CASAMAR

POMPANO BEACH



FLOORPLAN

Model 04

POMPANO BEACH LIKE YOU'VE NEVER SEEN

900 N OCEAN BLVD, POMPANO BEACH, FL 33062 | INQUIRIES 954.433.6080 | CASAMARBEACH.COM

Model 04



CASAMAR

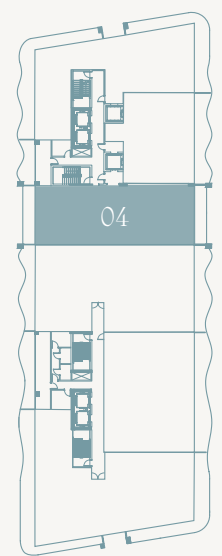
POMPAÑO BEACH

3 Bedroom + Den

INTERIOR 2,500 SF | EXTERIOR 350 SF | TOTAL 2,850 SF



Key Plate



OCEAN VIEW





CASAMAR

POMPANO BEACH



FLOORPLAN

Model 05

POMPANO BEACH LIKE YOU'VE NEVER SEEN

900 N OCEAN BLVD, POMPANO BEACH, FL 33062 | INQUIRIES 954.433.6080 | CASAMARBEACH.COM

Model 05

FLOORPLAN



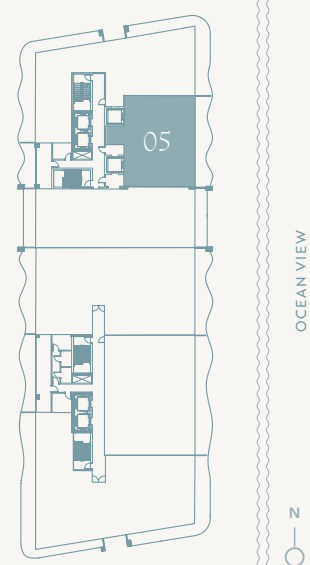
CASAMAR
POMPAÑO BEACH

2 Bedroom + Den

INTERIOR 1,700 SF | EXTERIOR 344 SF | TOTAL 2,044 SF



Key Plate



ORAL REPRESENTATIONS CANNOT BE RELIED UPON AS CORRECTLY STATING REPRESENTATIONS OF THE DEVELOPER. FOR CORRECT REPRESENTATIONS, MAKE REFERENCE TO THE DOCUMENTS REQUIRED BY SECTION 718.503, FLORIDA STATUTES, TO BE FURNISHED BY A DEVELOPER TO A BUYER OR LESSEE. CASAMAR IS DEVELOPED BY PRH 900 NORTH OCEAN, LLC (DEVELOPER) AND ANY CASAMAR OFFERING IS MADE ONLY BY THE DEVELOPER'S PROSPECTUS FOR THE CONDOMINIUM. THE DEVELOPER IS NOT INCORPORATED IN, LOCATED IN, NOR A RESIDENT OF, NEW YORK. THIS IS NOT INTENDED TO BE AN OFFER TO SELL, OR SOLICITATION OF AN OFFER TO BUY, CONDOMINIUM UNITS IN NEW YORK OR TO RESIDENTS OF NEW YORK, OR IN ANY OTHER JURISDICTION WHERE PROHIBITED BY LAW UNLESS THE CONDOMINIUM IS REGISTERED IN SUCH JURISDICTIONS OR EXEMPT. NO STATEMENT SHOULD BE RELIED UPON IF NOT MADE IN THE DEVELOPER'S PROSPECTUS. ARCHITECTURAL DESIGN ELEMENTS MAY VARY FROM CONCEPT TO ACTUAL CONSTRUCTION. ALL DEPICTIONS ARE CONCEPTUAL. DEVELOPER, PURSUANT TO A LICENSE AGREEMENT HAS A RIGHT TO USE THE TRADE NAMES, MARKS, AND LOGOS OF THE RELATED GROUP. CONSULT THE DEVELOPER'S PROSPECTUS FOR ALL TERMS, CONDITIONS, SPECIFICATIONS, AND UNIT DIMENSIONS. REPRODUCTION FOR PRIVATE OR COMMERCIAL USE IS NOT AUTHORIZED. 2022 © PRH 900 NORTH OCEAN, LLC. UNLESS OTHERWISE NOTED WITH ALL RIGHTS RESERVED.



CASAMAR

POMPANO BEACH



FLOORPLAN

Model 06

POMPANO BEACH LIKE YOU'VE NEVER SEEN

900 N OCEAN BLVD, POMPANO BEACH, FL 33062 | INQUIRIES 954.433.6080 | CASAMARBEACH.COM

Model 06

FLOORPLAN

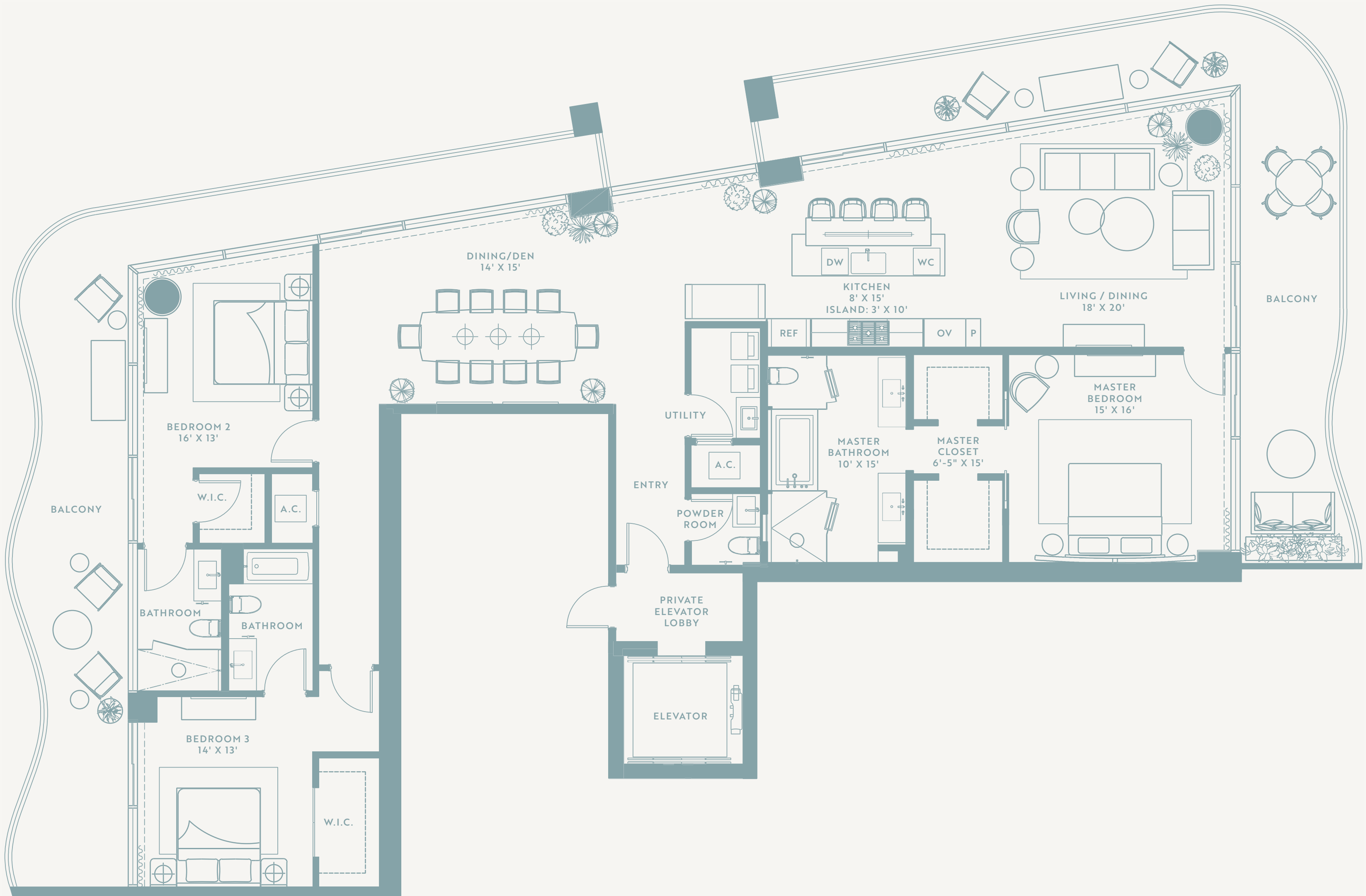


CASAMAR

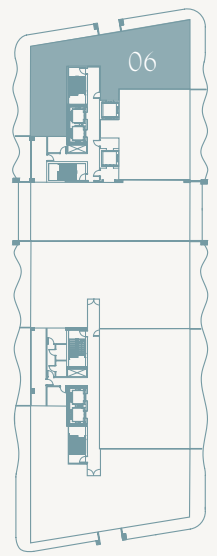
POMPANO BEACH

3 Bedroom + Den

INTERIOR 2,590 SF | EXTERIOR 1,066 SF | TOTAL 3,656 SF



Key Plate



ORAL REPRESENTATIONS CANNOT BE RELIED UPON AS CORRECTLY STATING REPRESENTATIONS OF THE DEVELOPER. FOR CORRECT REPRESENTATIONS, MAKE REFERENCE TO THE DOCUMENTS REQUIRED BY SECTION 718.503, FLORIDA STATUTES, TO BE FURNISHED BY A DEVELOPER TO A BUYER OR LESSEE. CASAMAR IS DEVELOPED BY PRH 900 NORTH OCEAN, LLC (DEVELOPER) AND ANY CASAMAR OFFERING IS MADE ONLY BY THE DEVELOPER'S PROSPECTUS FOR THE CONDOMINIUM. THE DEVELOPER IS NOT INCORPORATED IN, LOCATED IN, NOR A RESIDENT OF, NEW YORK. THIS IS NOT INTENDED TO BE AN OFFER TO SELL, OR SOLICITATION OF AN OFFER TO BUY, CONDOMINIUM UNITS IN NEW YORK OR TO RESIDENTS OF NEW YORK, OR IN ANY OTHER JURISDICTION WHERE PROHIBITED BY LAW UNLESS THE CONDOMINIUM IS REGISTERED IN SUCH JURISDICTIONS OR EXEMPT. NO STATEMENT SHOULD BE RELIED UPON IF NOT MADE IN THE DEVELOPER'S PROSPECTUS. ARCHITECTURAL DESIGN ELEMENTS MAY VARY FROM CONCEPT TO ACTUAL CONSTRUCTION. ALL DEPICTIONS ARE CONCEPTUAL. DEVELOPER, PURSUANT TO A LICENSE AGREEMENT HAS A RIGHT TO USE THE TRADE NAMES, MARKS, AND LOGOS OF THE RELATED GROUP. CONSULT THE DEVELOPER'S PROSPECTUS FOR ALL TERMS, CONDITIONS, SPECIFICATIONS, AND UNIT DIMENSIONS. REPRODUCTION FOR PRIVATE OR COMMERCIAL USE IS NOT AUTHORIZED. 2022 © PRH 900 NORTH OCEAN, LLC. UNLESS OTHERWISE NOTED, WITH ALL RIGHTS RESERVED.