

2200 BRICKELL

TYPE A

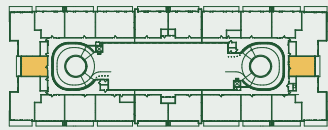
UNITS 06, 17

1 BEDROOM + DEN

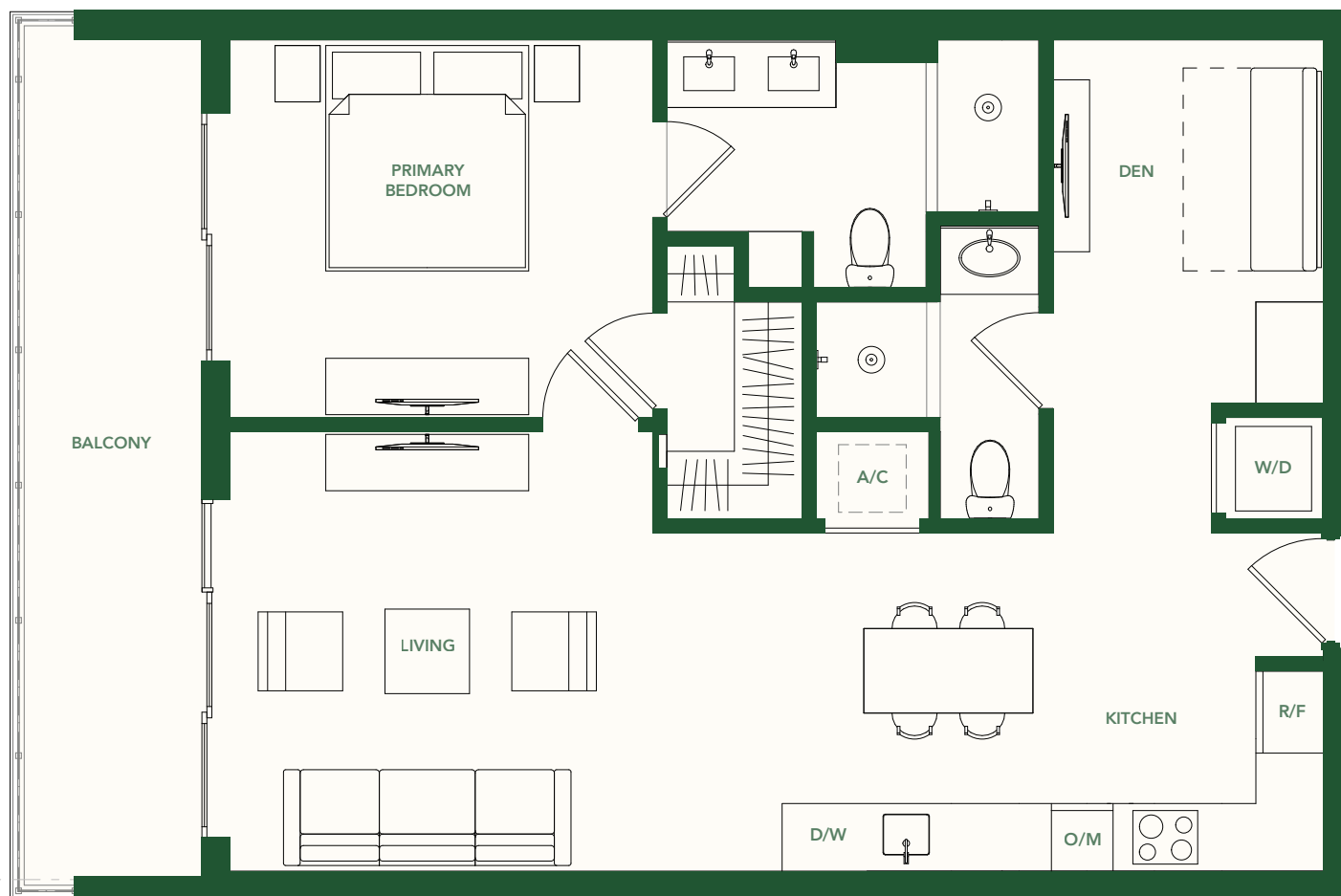
2 BATHROOMS

LEVELS 2 – 5

INTERIOR	864 SF / 80 M ²
BALCONY	124 SF / 12 M ²
TOTAL	988 SF / 92 M ²



BRICKELL AVE.



These drawings are conceptual only and are for the convenience of reference. They should not be relied upon as representations, express or implied, of the final detail of the residences. Units shown are examples of unit types and may not depict actual units. Stated square footages are ranges for a particular unit type and are measured to the exterior boundaries of the exterior walls and the centerline of interior demising walls and in fact vary from the area that would be determined by using the description and definition of the unit set forth in the declaration (which generally only includes the interior airspace between the perimeter walls and excludes interior structural components). Note that measurements of rooms set forth on this floorplan are generally taken at the greatest points of each given room (as if the room were a perfect rectangle), without regards for any cutouts. Accordingly, the area of the actual room will typically be smaller than the product obtained by multiplying the stated length times width. All dimensions are approximate and may vary with actual construction, and all floor plans and development plans are subject to change.

ARIA LARGO **PLACE**
DEVELOPER/BUILDER PROJECTS

2200
BRICKELL

TYPE C

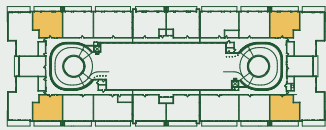
UNITS 04, 08, 15, 19

2 BEDROOMS

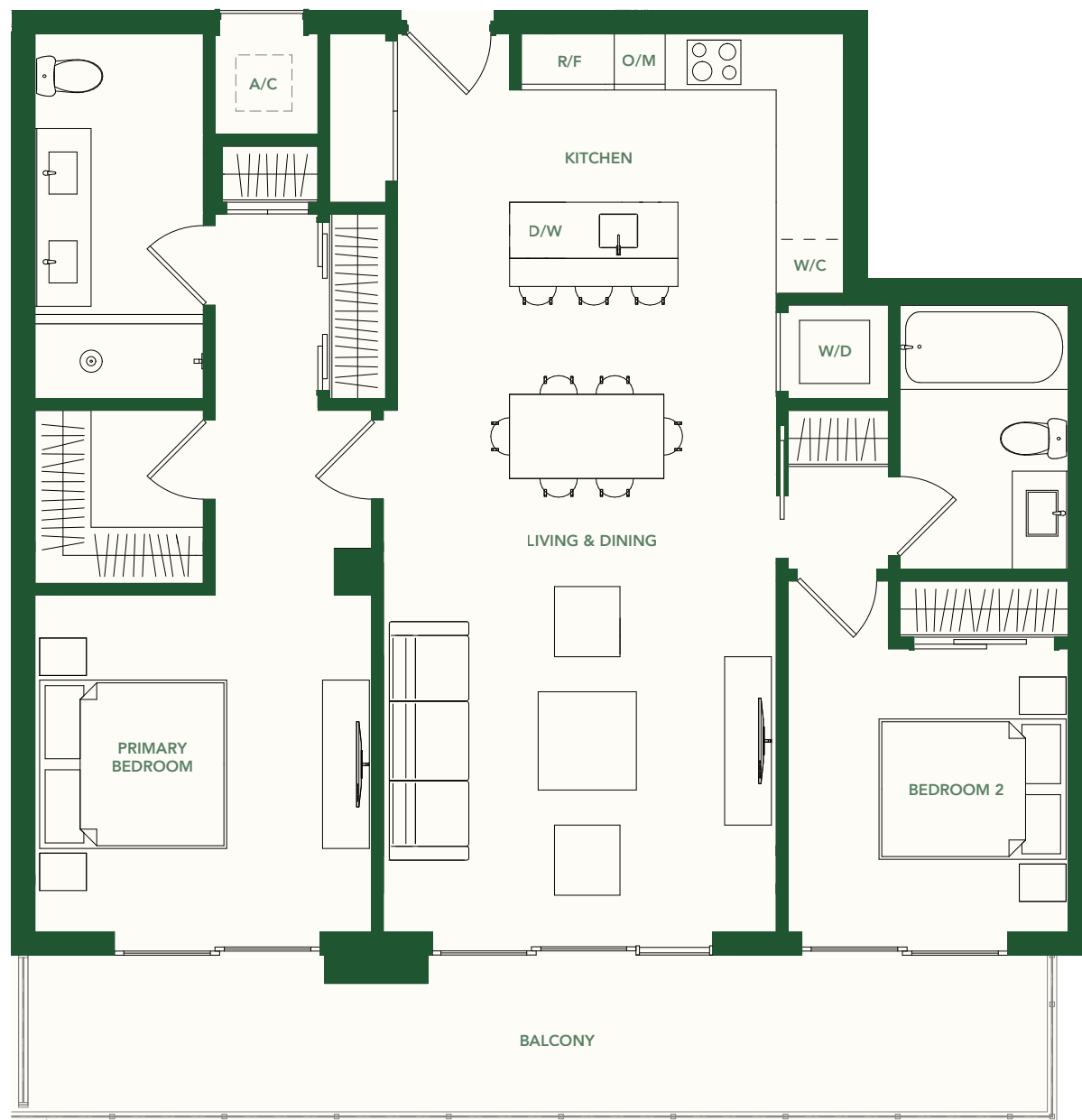
2 BATHROOMS

LEVEL 2 – 5

INTERIOR	1,189 SF / 110 M ²
BALCONY	215 SF / 20 M ²
TOTAL	1,404 SF / 130 M ²



BRICKELL AVE.



These drawings are conceptual only and are for the convenience of reference. They should not be relied upon as representations, express or implied, of the final detail of the residences. Units shown are examples of unit types and may not depict actual units. Stated square footages are ranges for a particular unit type and are measured to the exterior boundaries of the exterior walls and the centerline of interior demising walls and in fact vary from the area that would be determined by using the description and definition of the unit set forth in the declaration (which generally only includes the interior airspace between the perimeter walls and excludes interior structural components). Note that measurements of rooms set forth on this floorplan are generally taken at the greatest points of each given room (as if the room were a perfect rectangle), without regard for any cutouts. Accordingly, the area of the actual room will typically be smaller than the product obtained by multiplying the stated length times width. All dimensions are approximate and may vary with actual construction, and all floor plans and development plans are subject to change.

ARIA LARGO **PLACE**
DEVELOPER/BUILDER PROJECTS

2200 BRICKELL

TYPE E

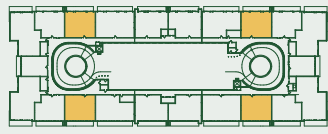
UNITS 03, 09, 14, 20

2 BEDROOMS + DEN

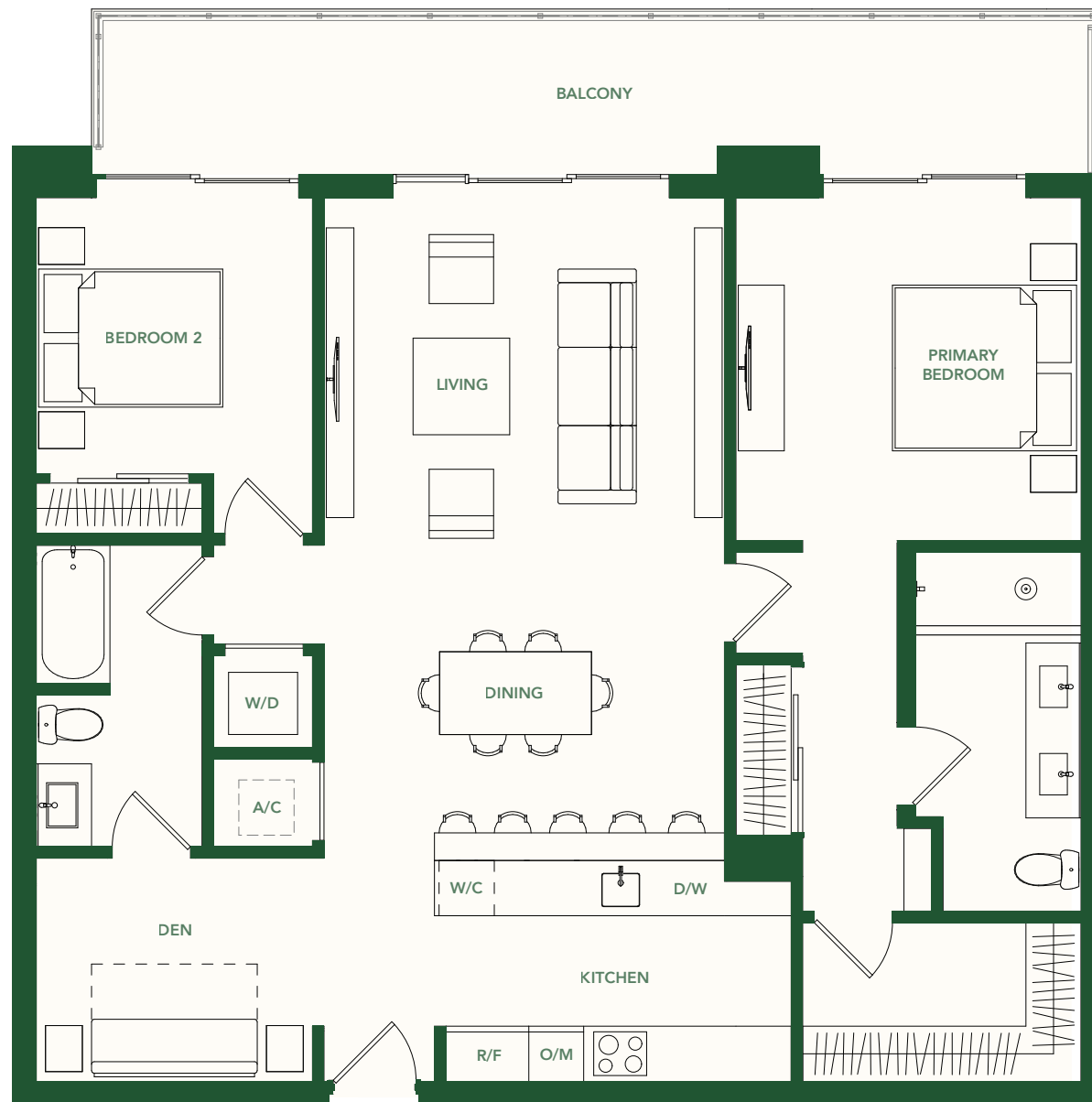
2 BATHROOMS

LEVELS 2 – 5

INTERIOR	1,302 SF / 121 M ²
BALCONY	213 SF / 20 M ²
TOTAL	1,515 SF / 141 M ²



BRICKELL AVE.



These drawings are conceptual only and are for the convenience of reference. They should not be relied upon as representations, express or implied, of the final detail of the residences. Units shown are examples of unit types and may not depict actual units. Stated square footages are ranges for a particular unit type and are measured to the exterior boundaries of the exterior walls and the centerline of interior demising walls and in fact vary from the area that would be determined by using the description and definition of the unit set forth in the declaration (which generally only includes the interior airspace between the perimeter walls and excludes interior structural components). Note that measurements of rooms set forth on this floorplan are generally taken at the greatest points of each given room (as if the room were a perfect rectangle), without regards for any cutouts. Accordingly, the area of the actual room will typically be smaller than the product obtained by multiplying the stated length times width. All dimensions are approximate and may vary with actual construction, and all floor plans and development plans are subject to change.

ARIA LARGO **PLACE**
DEVELOPER/BUILDER PROJECTS

2200 BRICKELL

TYPE F

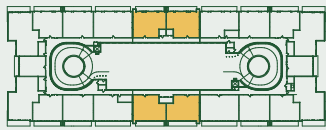
UNITS 01, 11, 12, 22

2 BEDROOMS + DEN

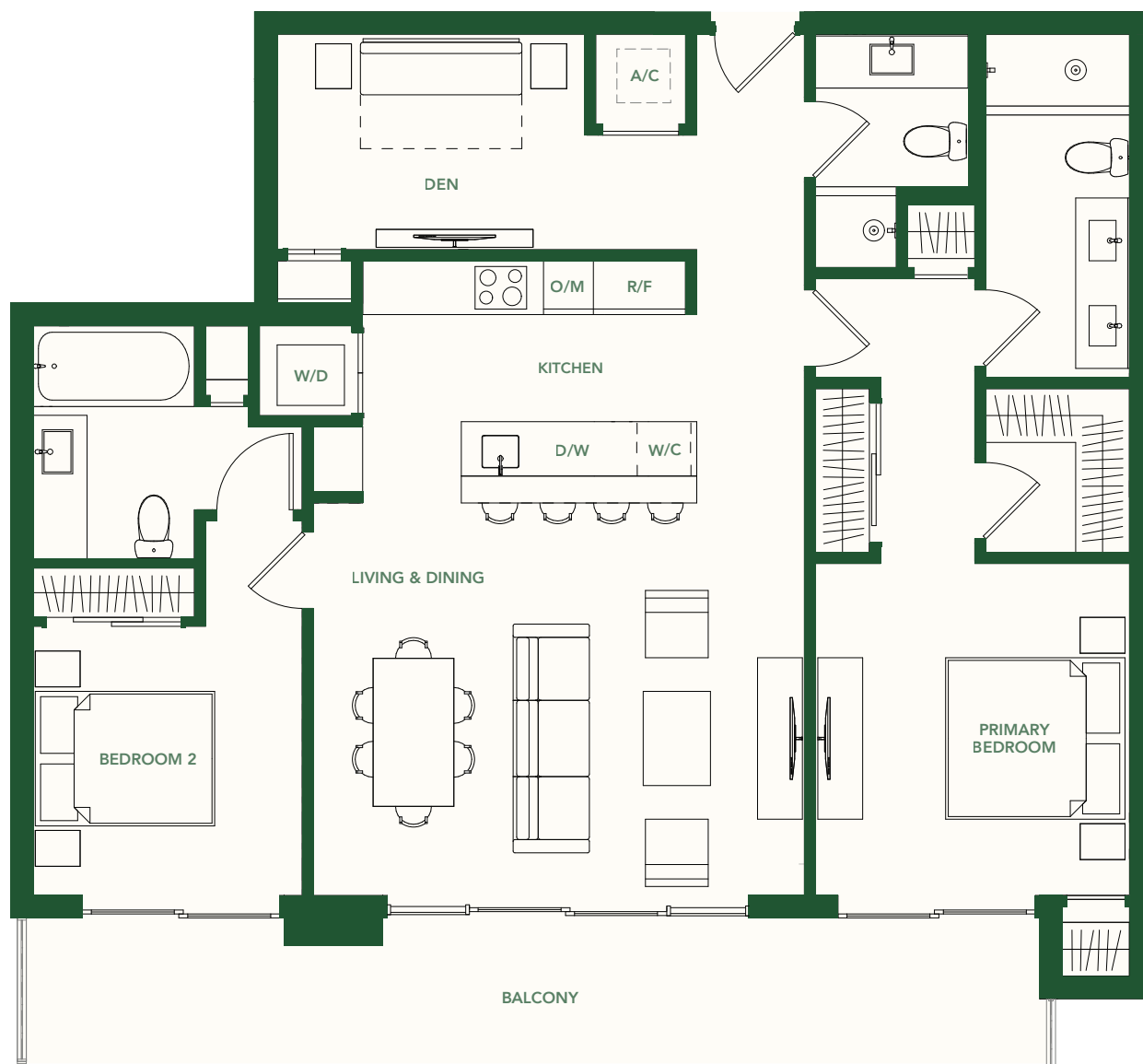
3 BATHROOMS

LEVELS 2 – 5

INTERIOR	1,317 SF / 122 M ²
BALCONY	210 SF / 20 M ²
TOTAL	1,527 SF / 142 M ²



BRICKELL AVE.



These drawings are conceptual only and are for the convenience of reference. They should not be relied upon as representations, express or implied, of the final detail of the residences. Units shown are examples of unit types and may not depict actual units. Stated square footages are ranges for a particular unit type and are measured to the exterior boundaries of the exterior walls and the centerline of interior demising walls and in fact vary from the area that would be determined by using the description and definition of the unit set forth in the declaration (which generally only includes the interior airspace between the perimeter walls and excludes interior structural components). Note that measurements of rooms set forth on this floorplan are generally taken at the greatest points of each given room (as if the room were a perfect rectangle), without regards for any cutouts. Accordingly, the area of the actual room will typically be smaller than the product obtained by multiplying the stated length times width. All dimensions are approximate and may vary with actual construction, and all floor plans and development plans are subject to change.

ARIA LARGO **PLACE**
DEVELOPER/BUILDER PROJECTS

2200 BRICKELL

TYPE G

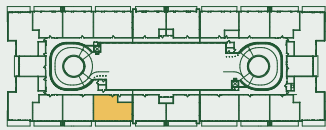
UNIT 13

3 BEDROOMS

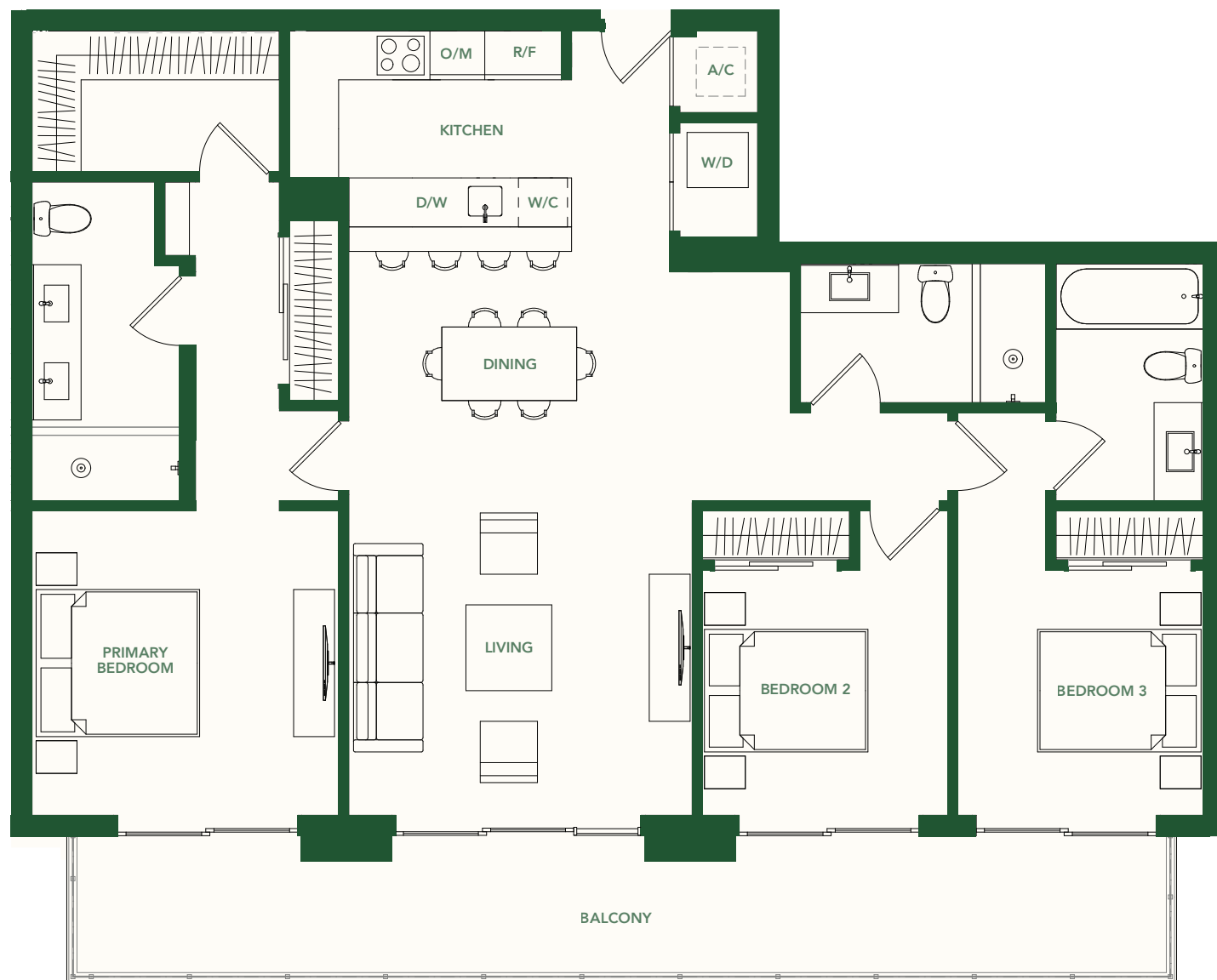
3 BATHROOMS

LEVELS 2 – 5

INTERIOR	1,470 SF / 137 M ²
BALCONY	256 SF / 24 M ²
TOTAL	1,726 SF / 161 M ²



BRICKELL AVE.



These drawings are conceptual only and are for the convenience of reference. They should not be relied upon as representations, express or implied, of the final detail of the residences. Units shown are examples of unit types and may not depict actual units. Stated square footages are ranges for a particular unit type and are measured to the exterior boundaries of the exterior walls and the centerline of interior demising walls and in fact vary from the area that would be determined by using the description and definition of the unit set forth in the declaration (which generally only includes the interior airspace between the perimeter walls and excludes interior structural components). Note that measurements of rooms set forth on this floorplan are generally taken at the greatest points of each given room (as if the room were a perfect rectangle), without regards for any cutouts. Accordingly, the area of the actual room will typically be smaller than the product obtained by multiplying the stated length times width. All dimensions are approximate and may vary with actual construction, and all floor plans and development plans are subject to change.

ARIA LARGO **PLA**
DEVELOPER/BUILDER PROJECTS

2200
BRICKELL

TYPE H

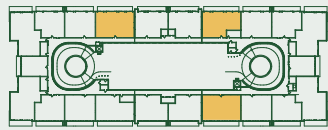
UNITS 02, 10, 21

3 BEDROOMS + DEN

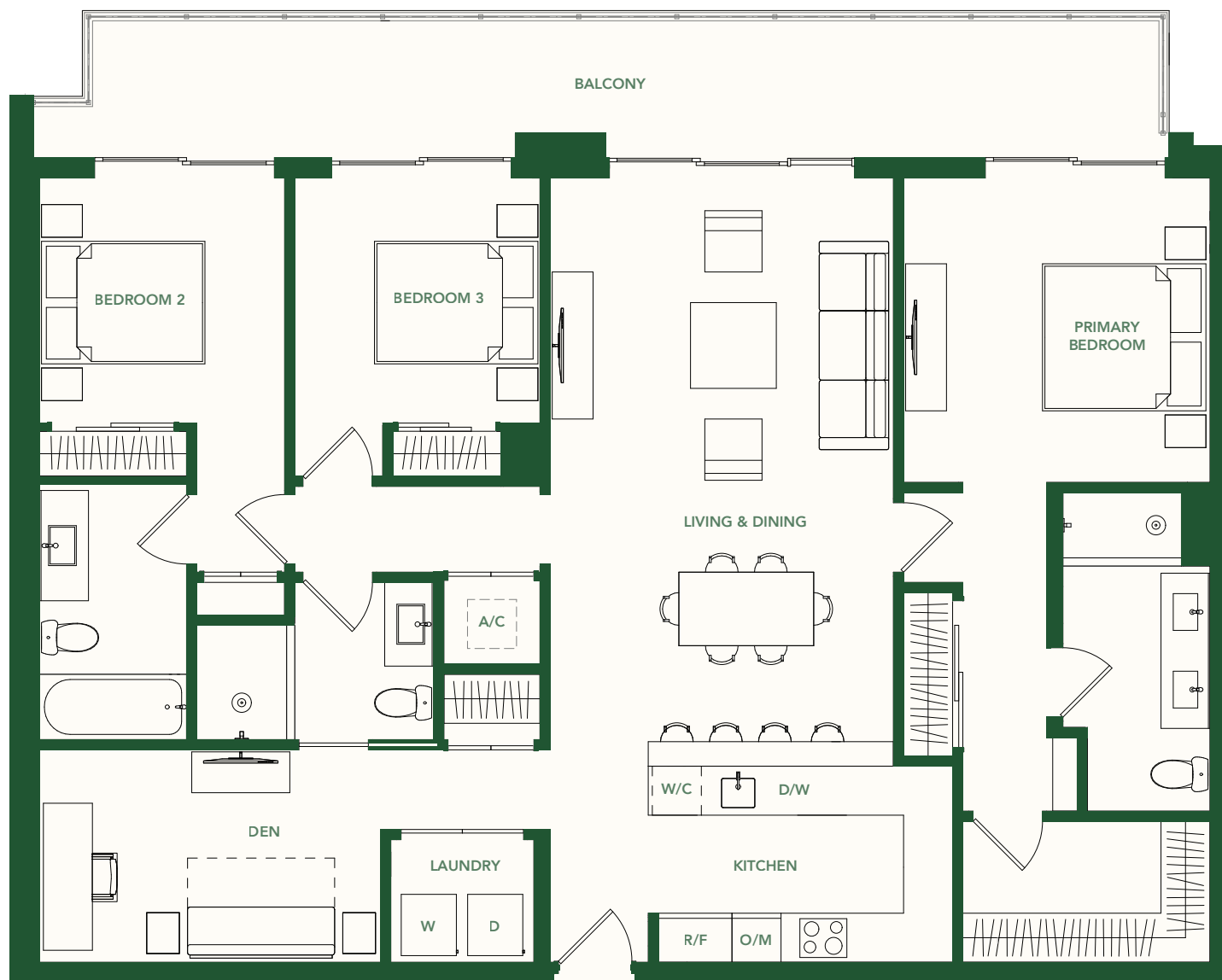
3 BATHROOMS

LEVELS 2 – 5

INTERIOR	1,652 SF / 152 M ²
BALCONY	259 SF / 24 M ²
TOTAL	1,911 SF / 177 M ²



BRICKELL AVE.



These drawings are conceptual only and are for the convenience of reference. They should not be relied upon as representations, express or implied, of the final detail of the residences. Units shown are examples of unit types and may not depict actual units. Stated square footages are ranges for a particular unit type and are measured to the exterior boundaries of the exterior walls and the centerline of interior demising walls and in fact vary from the area that would be determined by using the description and definition of the unit set forth in the declaration (which generally only includes the interior airspace between the perimeter walls and excludes interior structural components). Note that measurements of rooms set forth on this floorplan are generally taken at the greatest points of each given room (as if the room were a perfect rectangle), without regards for any cutouts. Accordingly, the area of the actual room will typically be smaller than the product obtained by multiplying the stated length times width. All dimensions are approximate and may vary with actual construction, and all floor plans and development plans are subject to change.

ARIA LARGO **PLACE**
DEVELOPER/BUILDER PROJECTS

2200 BRICKELL

TYPE J

UNITS 05, 07, 18

3 BEDROOMS + DEN

3.5 BATHROOMS

LEVELS 3 – 5

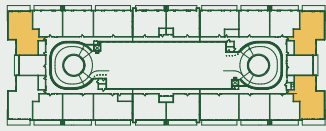
INTERIOR 1,818 SF / 169 M²

BALCONY 205 SF / 19 M²

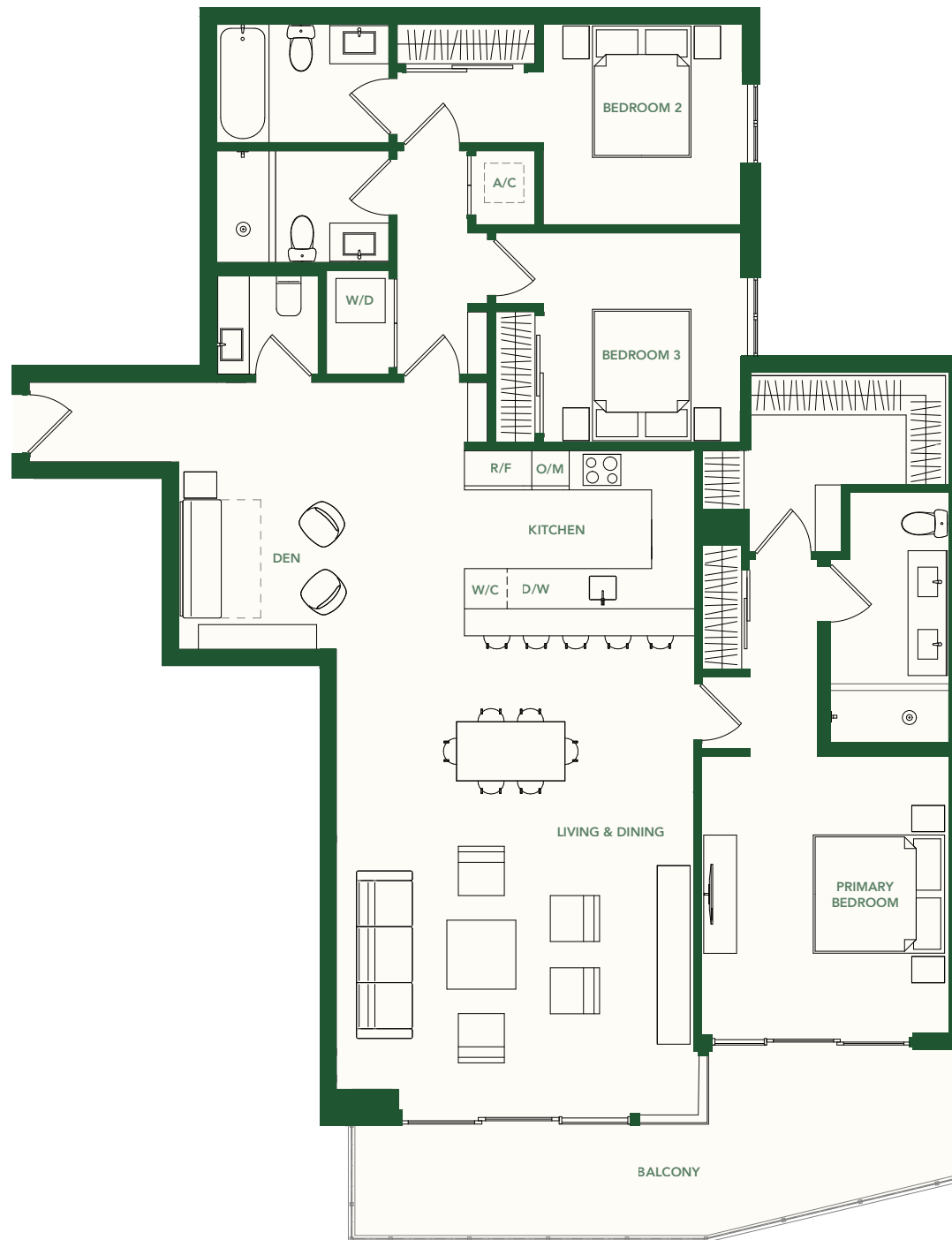
TOTAL 2,023 SF / 188 M²

UNITS 05, 07 - 1844 SF / 171 M²

UNIT 18 - 1818 SF / 169 M²



BRICKELL AVE.



These drawings are conceptual only and are for the convenience of reference. They should not be relied upon as representations, express or implied, of the final detail of the residences. Units shown are examples of unit types and may not depict actual units. Stated square footages are ranges for a particular unit type and are measured to the exterior boundaries of the exterior walls and the centerline of interior demising walls and in fact vary from the area that would be determined by using the description and definition of the unit set forth in the declaration (which generally only includes the interior airspace between the perimeter walls and excludes interior structural components). Note that measurements of rooms set forth on this floorplan are generally taken at the greatest points of each given room (as if the room were a perfect rectangle), without regards for any cutouts. Accordingly, the area of the actual room will typically be smaller than the product obtained by multiplying the stated length times width. All dimensions are approximate and may vary with actual construction, and all floor plans and development plans are subject to change.

ARIA LARGO DEVELOPER/BUILDER **PLACE** PROJECTS

2200 BRICKELL

TYPE J3

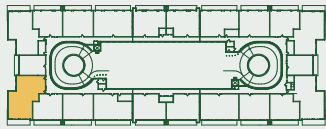
UNIT 16

3 BEDROOMS + DEN

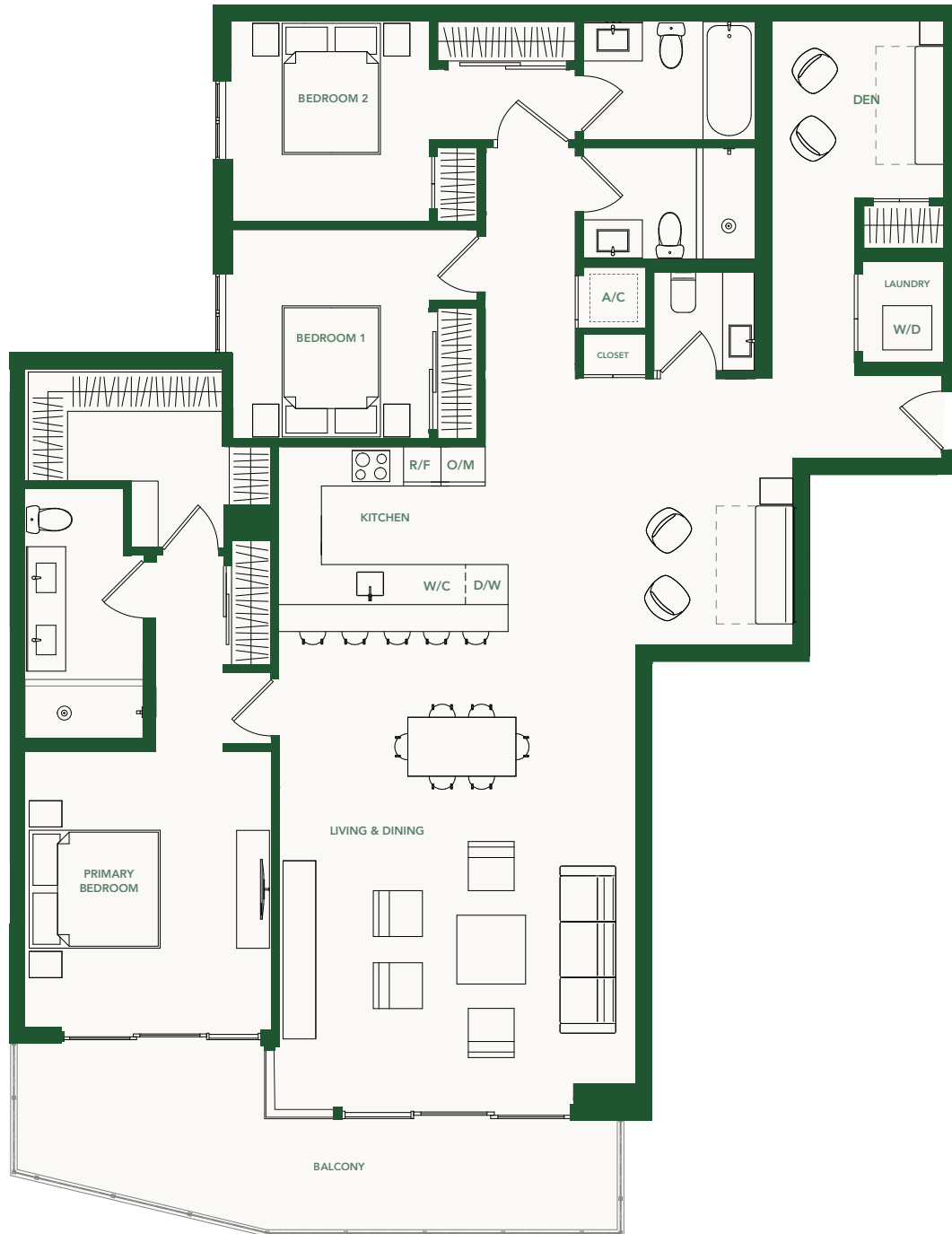
3.5 BATHROOMS

LEVELS 3 - 5

INTERIOR 2,000 SF / 186 M²
BALCONY 182 SF / 17 M²
TOTAL 2,182 SF / 203 M²



BRICKELL AVE.



These drawings are conceptual only and are for the convenience of reference. They should not be relied upon as representations, express or implied, of the final detail of the residences. Units shown are examples of unit types and may not depict actual units. Stated square footages are ranges for a particular unit type and are measured to the exterior boundaries of the exterior walls and the centerline of interior demising walls and in fact vary from the area that would be determined by using the description and definition of the unit set forth in the declaration (which generally only includes the interior airspace between the perimeter walls and excludes interior structural components). Note that measurements of rooms set forth on this floorplan are generally taken at the greatest points of each given room (as if the room were a perfect rectangle), without regard for any cutouts. Accordingly, the area of the actual room will typically be smaller than the product obtained by multiplying the stated length times width. All dimensions are approximate and may vary with actual construction, and all floor plans and development plans are subject to change.

ARIA LARGO **PLA**
 DEVELOPER/BUILDER PROJECTS

2200 BRICKELL

TYPE J3.1

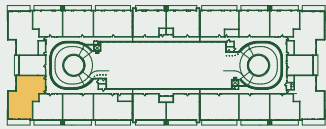
UNIT 16

3 BEDROOMS + DEN

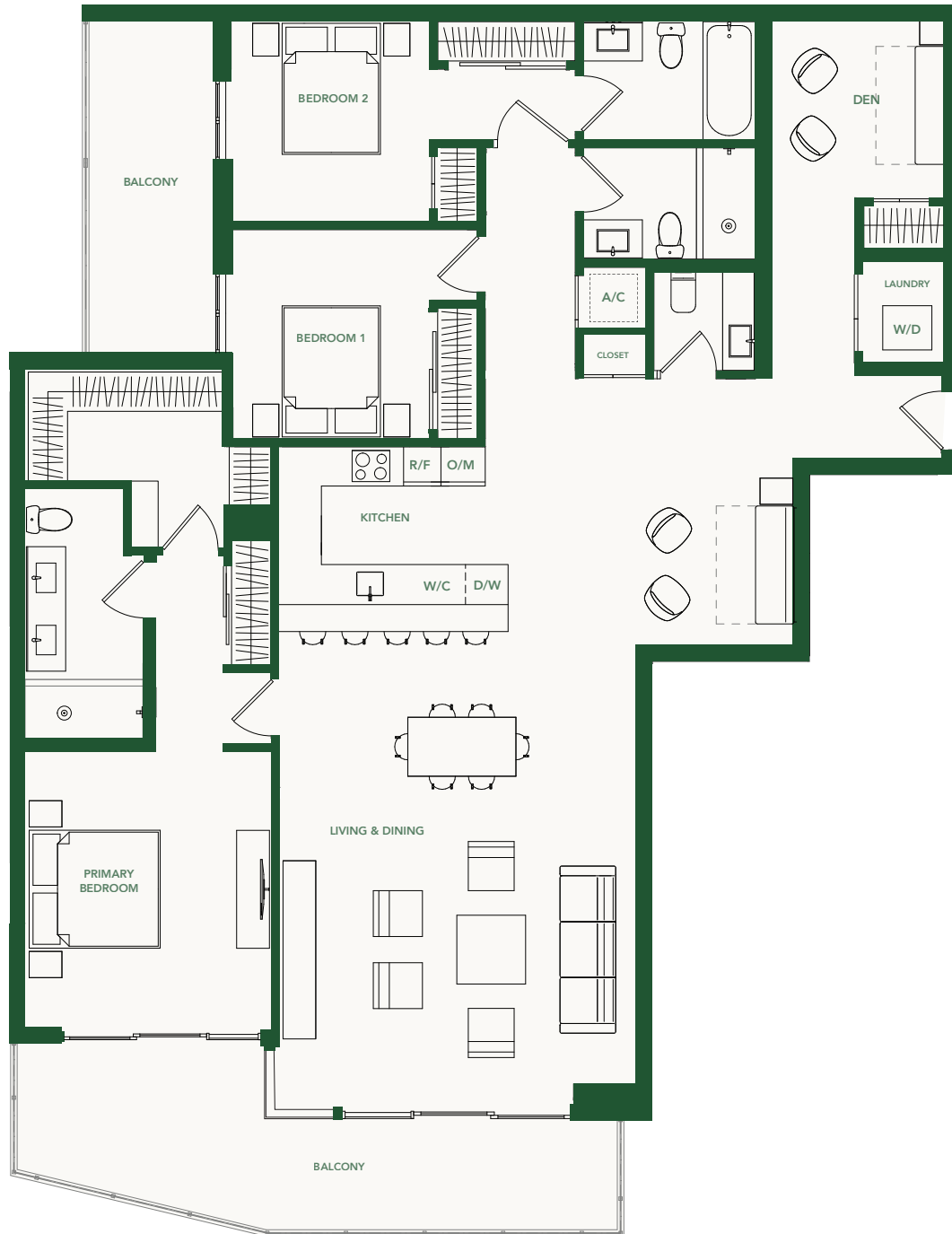
3.5 BATHROOMS

LEVEL 2

INTERIOR	2,000 SF / 186 M ²
BALCONY	307 SF / 29 M ²
TOTAL	2,307 SF / 215 M ²



BRICKELL AVE.



These drawings are conceptual only and are for the convenience of reference. They should not be relied upon as representations, express or implied, of the final detail of the residences. Units shown are examples of unit types and may not depict actual units. Stated square footages are ranges for a particular unit type and are measured to the exterior boundaries of the exterior walls and the centerline of interior demising walls and in fact vary from the area that would be determined by using the description and definition of the unit set forth in the declaration (which generally only includes the interior airspace between the perimeter walls and excludes interior structural components). Note that measurements of rooms set forth on this floorplan are generally taken at the greatest points of each given room (as if the room were a perfect rectangle), without regard for any cutouts. Accordingly, the area of the actual room will typically be smaller than the product obtained by multiplying the stated length times width. All dimensions are approximate and may vary with actual construction, and all floor plans and development plans are subject to change.

ARIA LARGO **PLA**
DEVELOPER/BUILDER PROJECTS

2200 BRICKELL

TYPE K

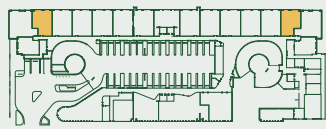
GARDEN VILLAS 103, 115

2 BEDROOMS

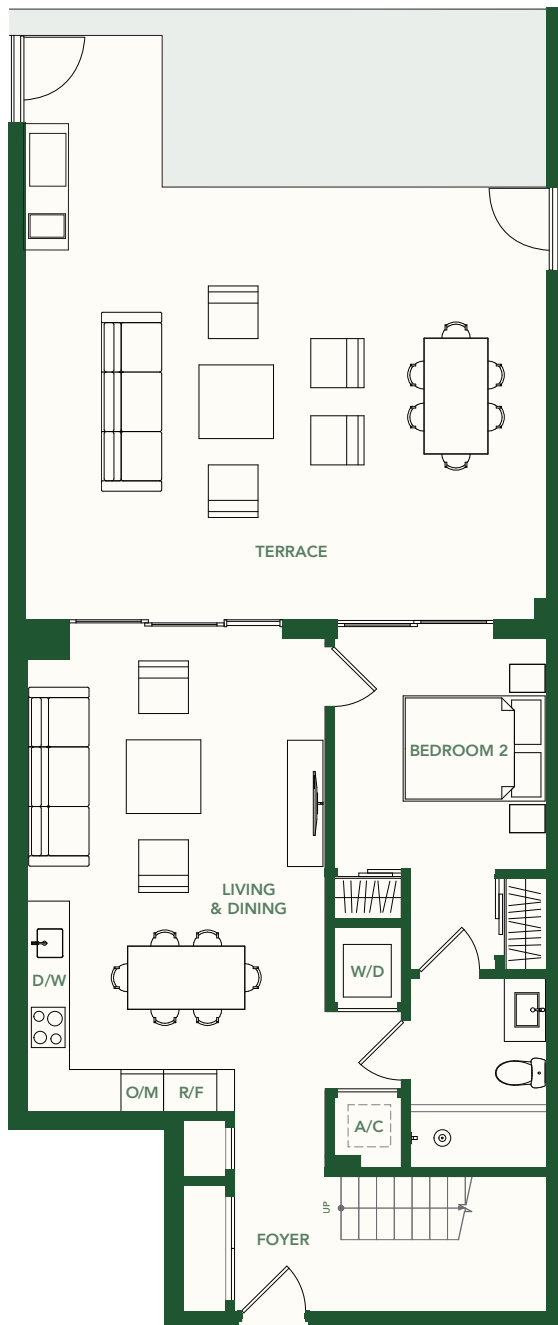
2 BATHROOMS

GROUND LEVEL

INTERIOR	1,233 SF / 115 M ²
TERRACE	715 SF / 66 M ²
TOTAL	1,948 SF / 181 M ²

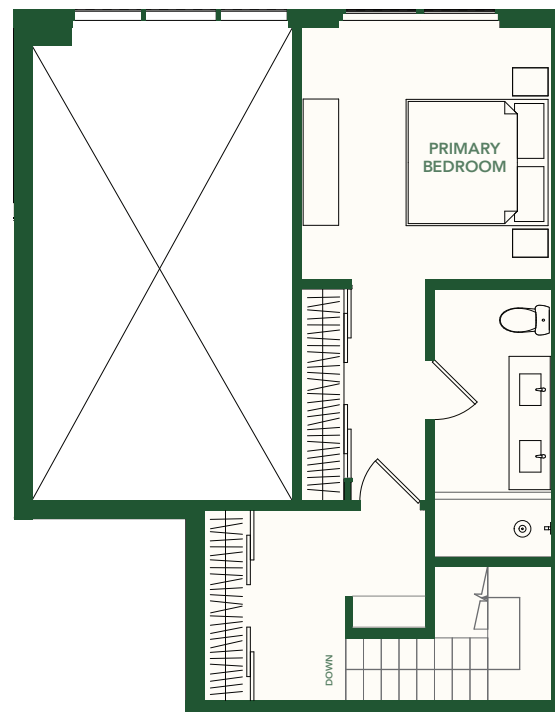


BRICKELL AVE.



GROUND LEVEL

Interior - 762 SF / 71 M²



SECOND LEVEL

Interior - 471 SF / 44 M²



These drawings are conceptual only and are for the convenience of reference. They should not be relied upon as representations, express or implied, of the final detail of the residences. Units shown are examples of unit types and may not depict actual units. Stated square footages are ranges for a particular unit type and are measured to the exterior boundaries of the exterior walls and the centerline of interior demising walls and in fact vary from the area that would be determined by using the description and definition of the unit set forth in the declaration (which generally only includes the interior airspace between the perimeter walls and excludes interior structural components). Note that measurements of rooms set forth on this floorplan are generally taken at the greatest points of each given room (as if the room were a perfect rectangle), without regards for any cutouts. Accordingly, the area of the actual room will typically be smaller than the product obtained by multiplying the stated length times width. All dimensions are approximate and may vary with actual construction, and all floor plans and development plans are subject to change.

ARIA LARGO **PLACE**
DEVELOPER/BUILDER PROJECTS

2200 BRICKELL

TYPE L1/L8

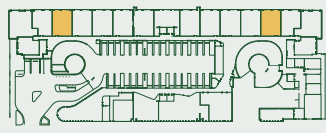
GARDEN VILLAS 104, 114

2 BEDROOMS + OFFICE

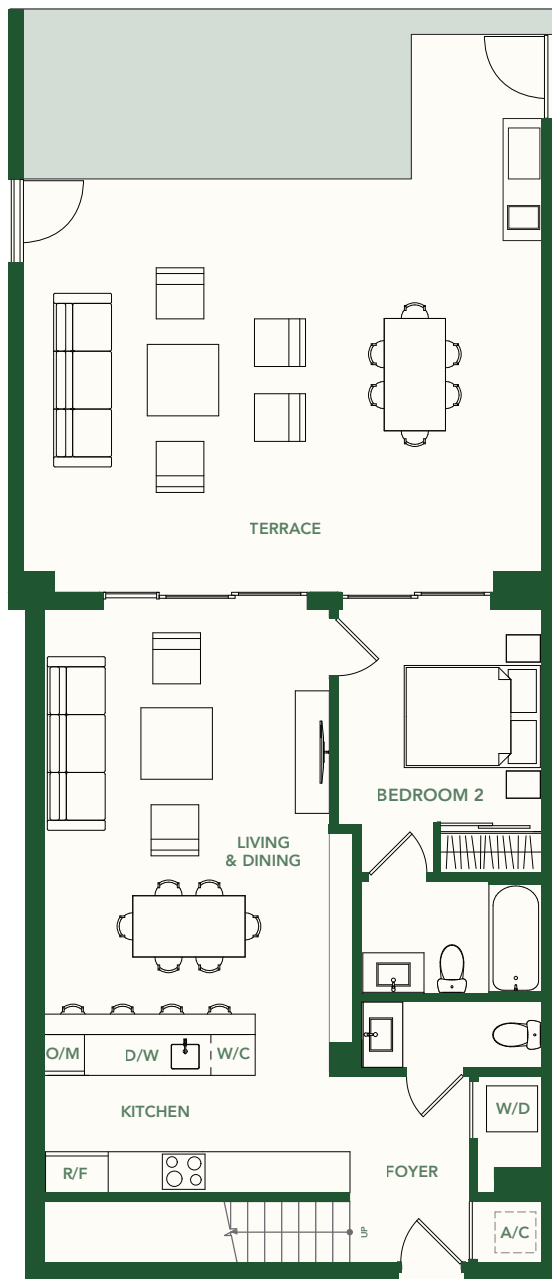
2.5 BATHROOMS

GROUND LEVEL

INTERIOR	1,426 SF / 133 M ²
TERRACE	741 SF / 69 M ²
TOTAL	2,167 SF / 201 M ²

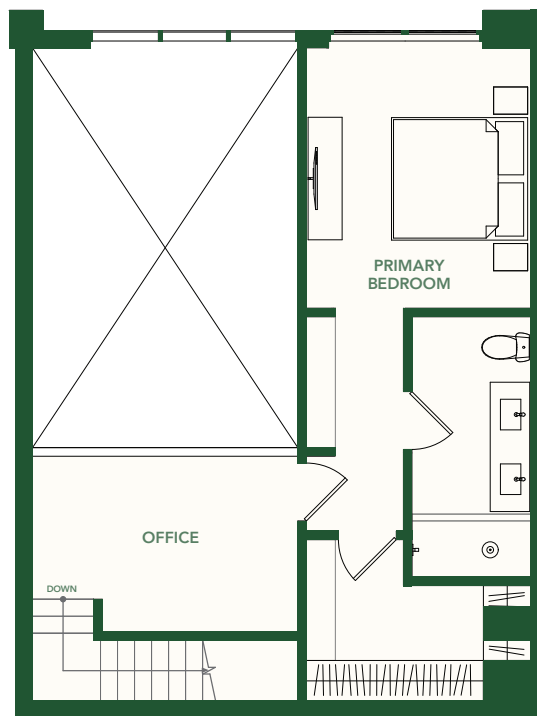


BRICKELL AVE.



GROUND LEVEL

Interior - 850 SF / 79 M²



SECOND LEVEL

Interior - 576 SF / 54 M²



These drawings are conceptual only and are for the convenience of reference. They should not be relied upon as representations, express or implied, of the final detail of the residences. Units shown are examples of unit types and may not depict actual units. Stated square footages are ranges for a particular unit type and are measured to the exterior boundaries of the exterior walls and the centerline of interior demising walls and in fact vary from the area that would be determined by using the description and definition of the unit set forth in the declaration (which generally only includes the interior airspace between the perimeter walls and excludes interior structural components). Note that measurements of rooms set forth on this floorplan are generally taken at the greatest points of each given room (as if the room were a perfect rectangle), without regards for any cutouts. Accordingly, the area of the actual room will typically be smaller than the product obtained by multiplying the stated length times width. All dimensions are approximate and may vary with actual construction, and all floor plans and development plans are subject to change.



2200 BRICKELL

TYPE L2/L7

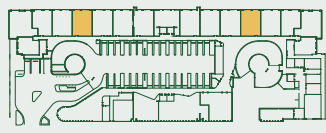
GARDEN VILLAS 105, 113

2 BEDROOMS + OFFICE

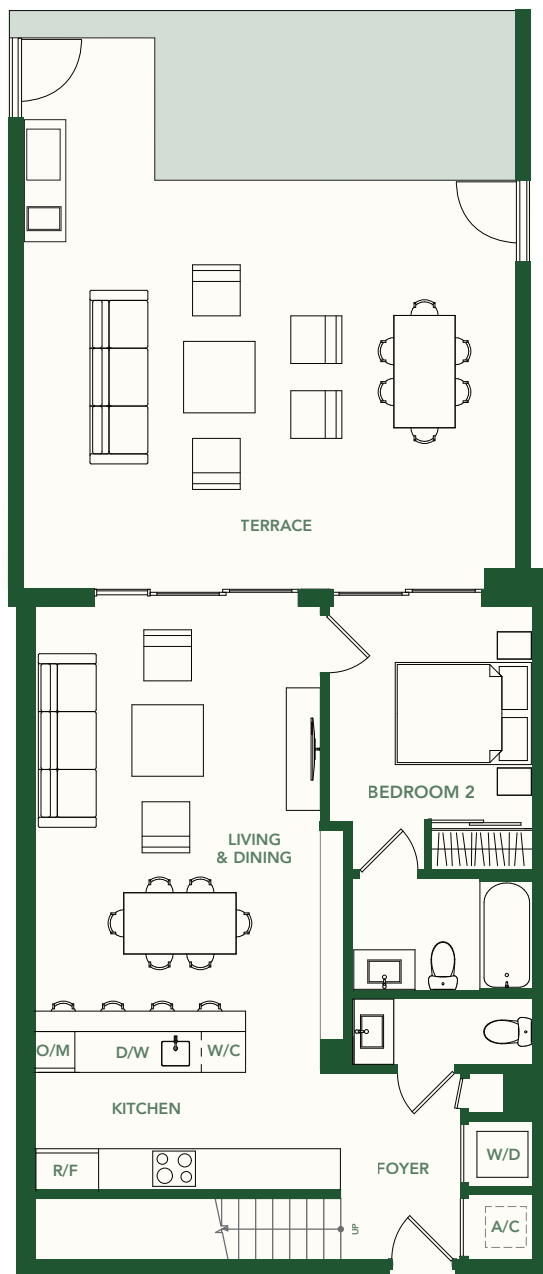
2.5 BATHROOMS

GROUND LEVEL

INTERIOR	1,426 SF / 133 M ²
TERRACE	702 SF / 65 M ²
TOTAL	2,128 SF / 198 M ²

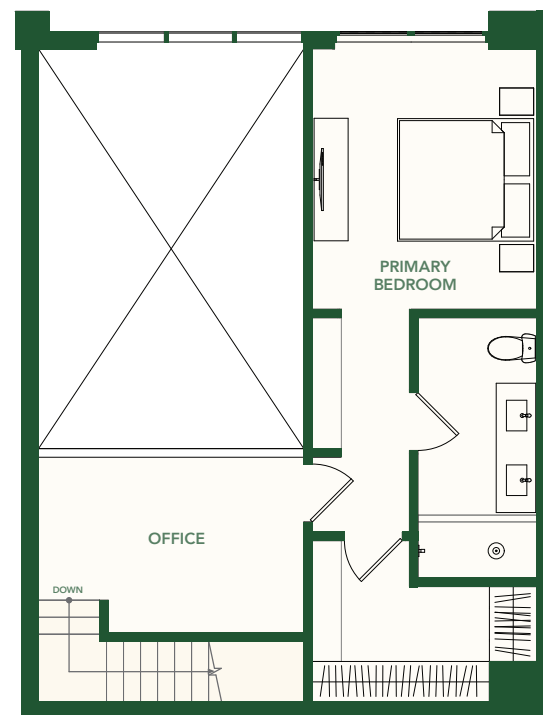


BRICKELL AVE.



GROUND LEVEL

Interior - 850 SF / 79 M²



SECOND LEVEL

Interior - 576 SF / 54 M²



These drawings are conceptual only and are for the convenience of reference. They should not be relied upon as representations, express or implied, of the final detail of the residences. Units shown are examples of unit types and may not depict actual units. Stated square footages are ranges for a particular unit type and are measured to the exterior boundaries of the exterior walls and the centerline of interior demising walls and in fact vary from the area that would be determined by using the description and definition of the unit set forth in the declaration (which generally only includes the interior airspace between the perimeter walls and excludes interior structural components). Note that measurements of rooms set forth on this floorplan are generally taken at the greatest points of each given room (as if the room were a perfect rectangle), without regard for any cutouts. Accordingly, the area of the actual room will typically be smaller than the product obtained by multiplying the stated length times width. All dimensions are approximate and may vary with actual construction, and all floor plans and development plans are subject to change.



2200 BRICKELL

TYPE L3/L6

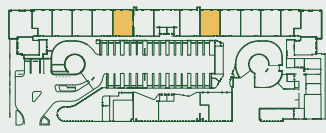
GARDEN VILLAS 107, 111

2 BEDROOMS + OFFICE

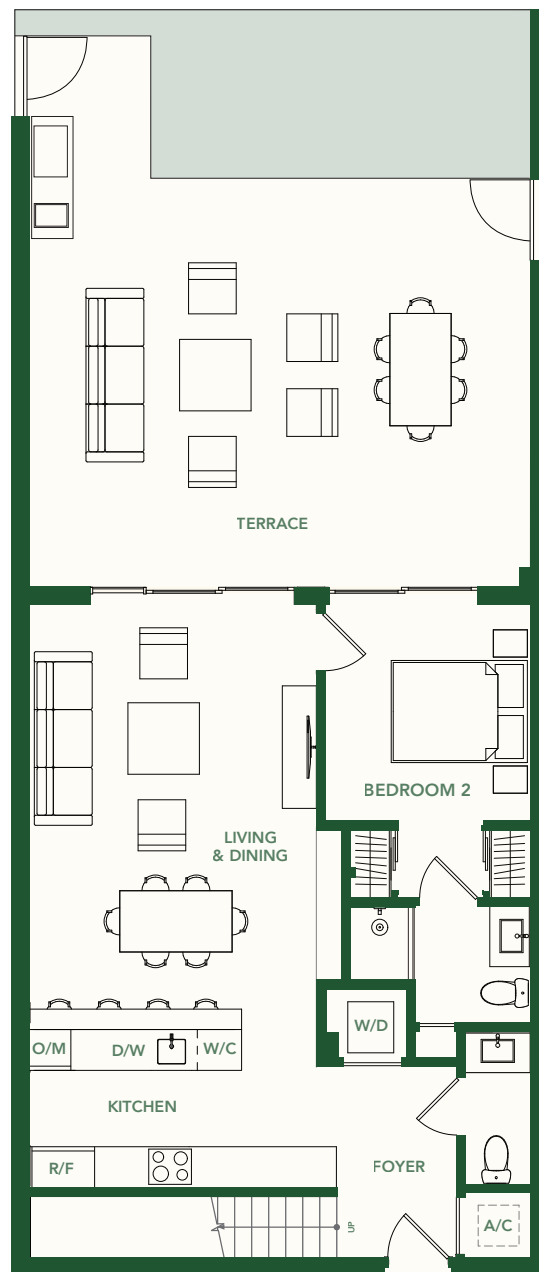
2.5 BATHROOMS

GROUND LEVEL

INTERIOR	1,434 SF / 133 M ²
TERRACE	720 SF / 69 M ²
TOTAL	2,154 SF / 200 M ²

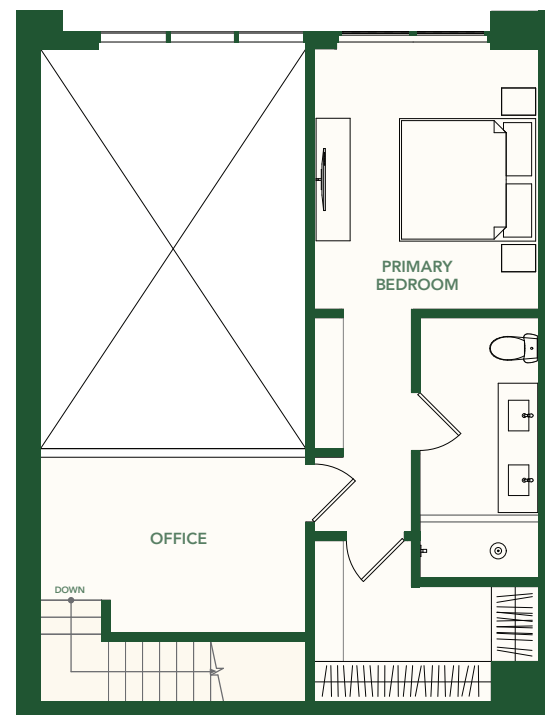


BRICKELL AVE.



GROUND LEVEL

Interior - 850 SF / 79 M²



SECOND LEVEL

Interior - 576 SF / 54 M²



These drawings are conceptual only and are for the convenience of reference. They should not be relied upon as representations, express or implied, of the final detail of the residences. Units shown are examples of unit types and may not depict actual units. Stated square footages are ranges for a particular unit type and are measured to the exterior boundaries of the exterior walls and the centerline of interior demising walls and in fact vary from the area that would be determined by using the description and definition of the unit set forth in the declaration (which generally only includes the interior airspace between the perimeter walls and excludes interior structural components). Note that measurements of rooms set forth on this floorplan are generally taken at the greatest points of each given room (as if the room were a perfect rectangle), without regard for any cutouts. Accordingly, the area of the actual room will typically be smaller than the product obtained by multiplying the stated length times width. All dimensions are approximate and may vary with actual construction, and all floor plans and development plans are subject to change.



2200 BRICKELL

TYPE L4/L5

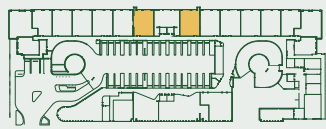
GARDEN VILLAS 108, 110

2 BEDROOMS + OFFICE

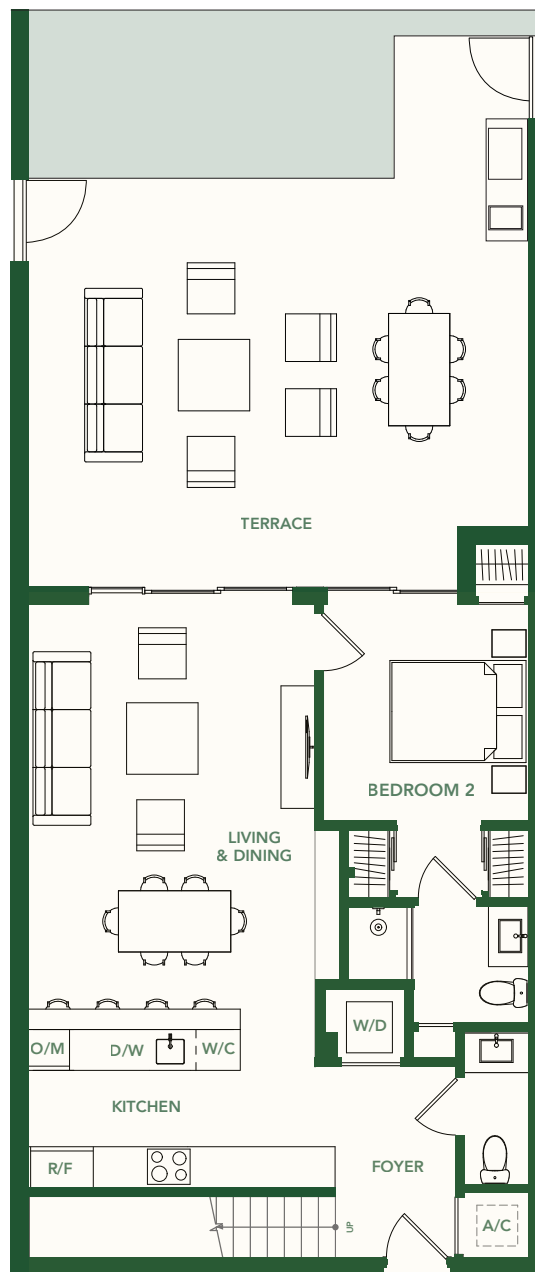
2.5 BATHROOMS

GROUND LEVEL

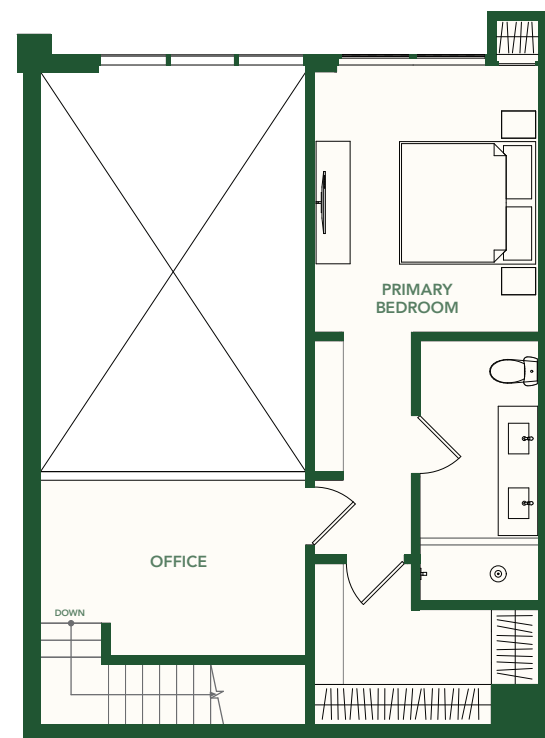
INTERIOR	1,462 SF / 136 M ²
TERRACE	708 SF / 66 M ²
TOTAL	2,170 SF / 202 M ²



BRICKELL AVE.



GROUND LEVEL
Interior - 850 SF / 79 M²



SECOND LEVEL
Interior - 576 SF / 54 M²



These drawings are conceptual only and are for the convenience of reference. They should not be relied upon as representations, express or implied, of the final detail of the residences. Units shown are examples of unit types and may not depict actual units. Stated square footages are ranges for a particular unit type and are measured to the exterior boundaries of the exterior walls and the centerline of interior demising walls and in fact vary from the area that would be determined by using the description and definition of the unit set forth in the declaration (which generally only includes the interior airspace between the perimeter walls and excludes interior structural components). Note that measurements of rooms set forth on this floorplan are generally taken at the greatest points of each given room (as if the room were a perfect rectangle), without regards for any cutouts. Accordingly, the area of the actual room will typically be smaller than the product obtained by multiplying the stated length times width. All dimensions are approximate and may vary with actual construction, and all floor plans and development plans are subject to change.



2200 BRICKELL

TYPE M

GARDEN VILLAS 106, 112

2 BEDROOMS + DEN + OFFICE

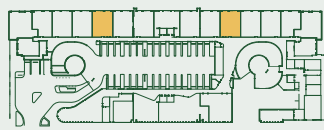
2.5 BATHROOMS

GROUND LEVEL

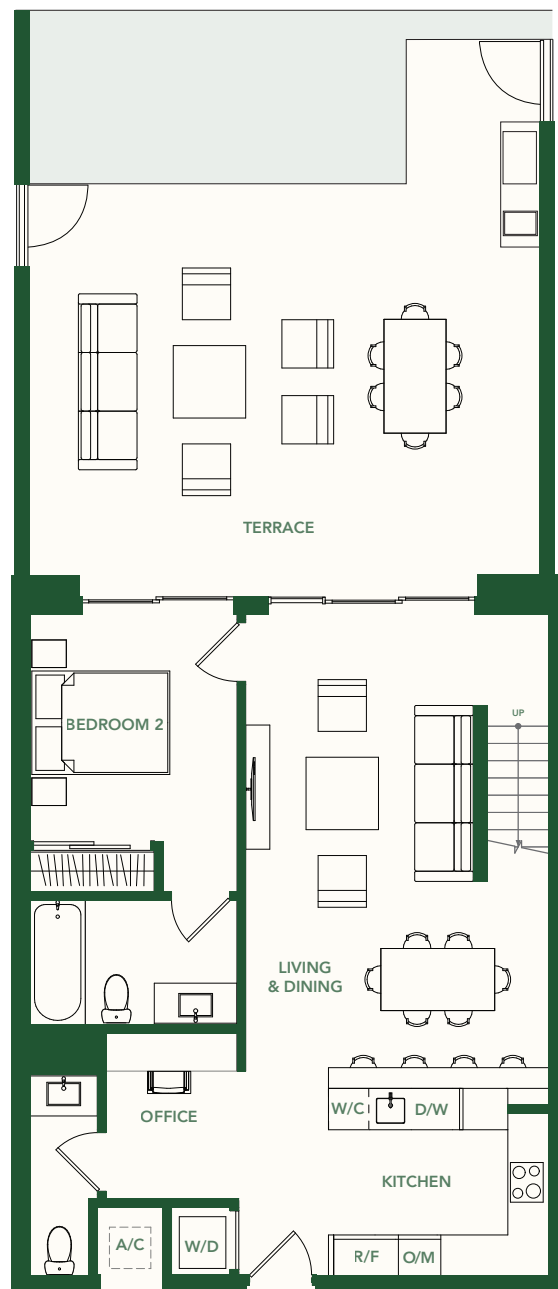
INTERIOR 1,458 SF / 135 M²

TERRACE 720 SF / 69 M²

TOTAL 2,178 SF / 202 M²

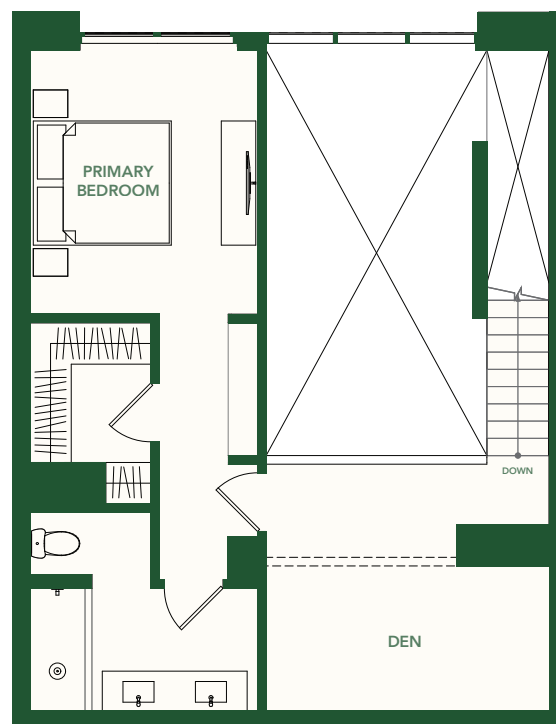


BRICKELL AVE.



GROUND LEVEL

Interior - 873 SF / 81 M²



SECOND LEVEL

Interior - 585 SF / 54 M²



These drawings are conceptual only and are for the convenience of reference. They should not be relied upon as representations, express or implied, of the final detail of the residences. Units shown are examples of unit types and may not depict actual units. Stated square footages are ranges for a particular unit type and are measured to the exterior boundaries of the exterior walls and the centerline of interior demising walls and in fact vary from the area that would be determined by using the description and definition of the unit set forth in the declaration (which generally only includes the interior airspace between the perimeter walls and excludes interior structural components). Note that measurements of rooms set forth on this floorplan are generally taken at the greatest points of each given room (as if the room were a perfect rectangle), without regard for any cutouts. Accordingly, the area of the actual room will typically be smaller than the product obtained by multiplying the stated length times width. All dimensions are approximate and may vary with actual construction, and all floor plans and development plans are subject to change.

ARIA LARGO
DEVELOPER/BUILDER

PLAQUE
PROJECTS

2200 BRICKELL

TYPE N

GARDEN VILLA 109

2 BEDROOMS + OFFICE

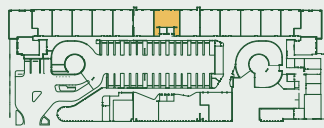
2.5 BATHROOMS

GROUND LEVEL

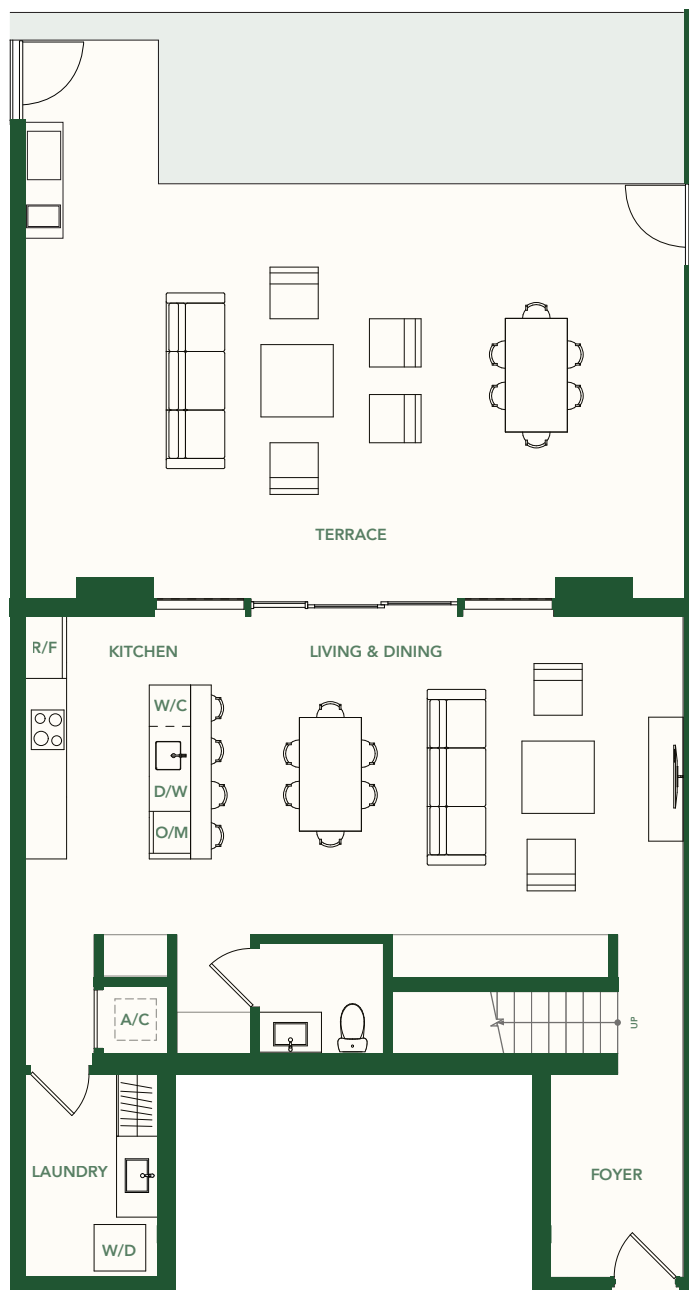
INTERIOR 1,793 SF / 167 M²

TERRACE 926 SF / 86 M²

TOTAL 2,719 SF / 252 M²



BRICKELL AVE.



GROUND LEVEL

Interior - 899 SF / 84 M²



SECOND LEVEL

Interior - 894 SF / 83 M²



These drawings are conceptual only and are for the convenience of reference. They should not be relied upon as representations, express or implied, of the final detail of the residences. Units shown are examples of unit types and may not depict actual units. Stated square footages are ranges for a particular unit type and are measured to the exterior boundaries of the exterior walls and the centerline of interior demising walls and in fact vary from the area that would be determined by using the description and definition of the unit set forth in the declaration (which generally only includes the interior airspace between the perimeter walls and excludes interior structural components). Note that measurements of rooms set forth on this floorplan are generally taken at the greatest points of each given room (as if the room were a perfect rectangle), without regard for any cutouts. Accordingly, the area of the actual room will typically be smaller than the product obtained by multiplying the stated length times width. All dimensions are approximate and may vary with actual construction, and all floor plans and development plans are subject to change.

ARIA LARGO **PLACE**
DEVELOPER/BUILDER PROJECTS

2200 BRICKELL

TYPE O

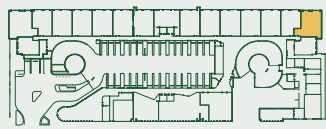
GARDEN VILLA 102

4 BEDROOMS

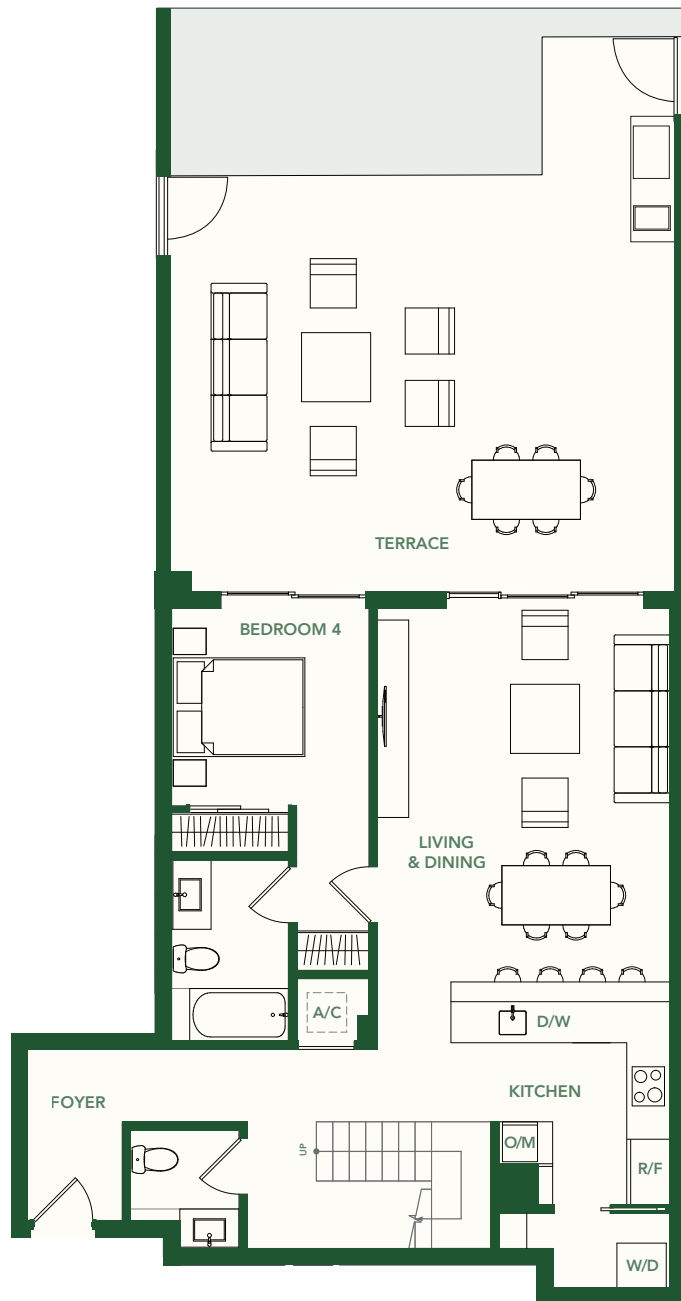
3.5 BATHROOMS

GROUND LEVEL

INTERIOR	1,973 SF / 183 M ²
TERRACE	859 SF / 80 M ²
TOTAL	2,832 SF / 263 M ²



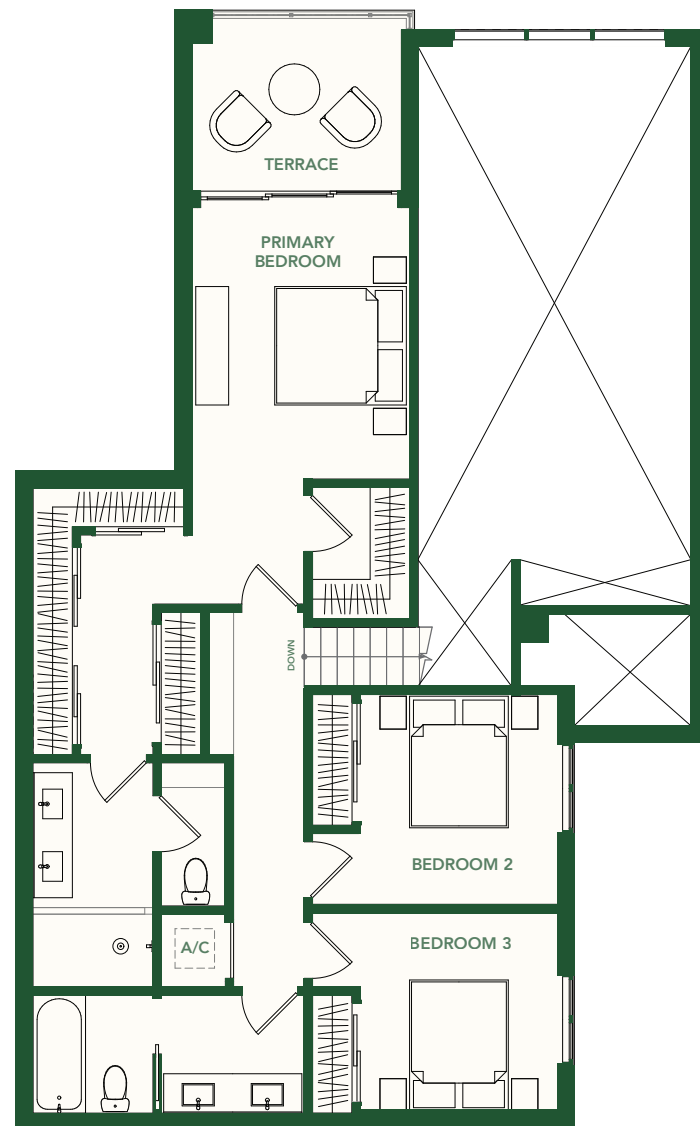
BRICKELL AVE.



GROUND LEVEL

Interior - 996 SF / 93 M²

Terrace - 768 SF / 71 M²



SECOND LEVEL

Interior - 977 SF / 91 M²

Terrace - 91 SF / 9 M²



These drawings are conceptual only and are for the convenience of reference. They should not be relied upon as representations, express or implied, of the final detail of the residences. Units shown are examples of unit types and may not depict actual units. Stated square footages are ranges for a particular unit type and are measured to the exterior boundaries of the exterior walls and the centerline of interior demising walls and in fact vary from the area that would be determined by using the description and definition of the unit set forth in the declaration (which generally only includes the interior airspace between the perimeter walls and excludes interior structural components). Note that measurements of rooms set forth on this floorplan are generally taken at the greatest points of each given room (as if the room were a perfect rectangle), without regards for any cutouts. Accordingly, the area of the actual room will typically be smaller than the product obtained by multiplying the stated length times width. All dimensions are approximate and may vary with actual construction, and all floor plans and development plans are subject to change.

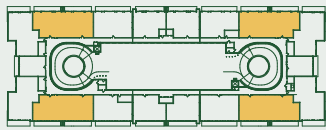
ARIA LARGO **PLACE**
DEVELOPER/BUILDER PROJECTS

TYPE Q

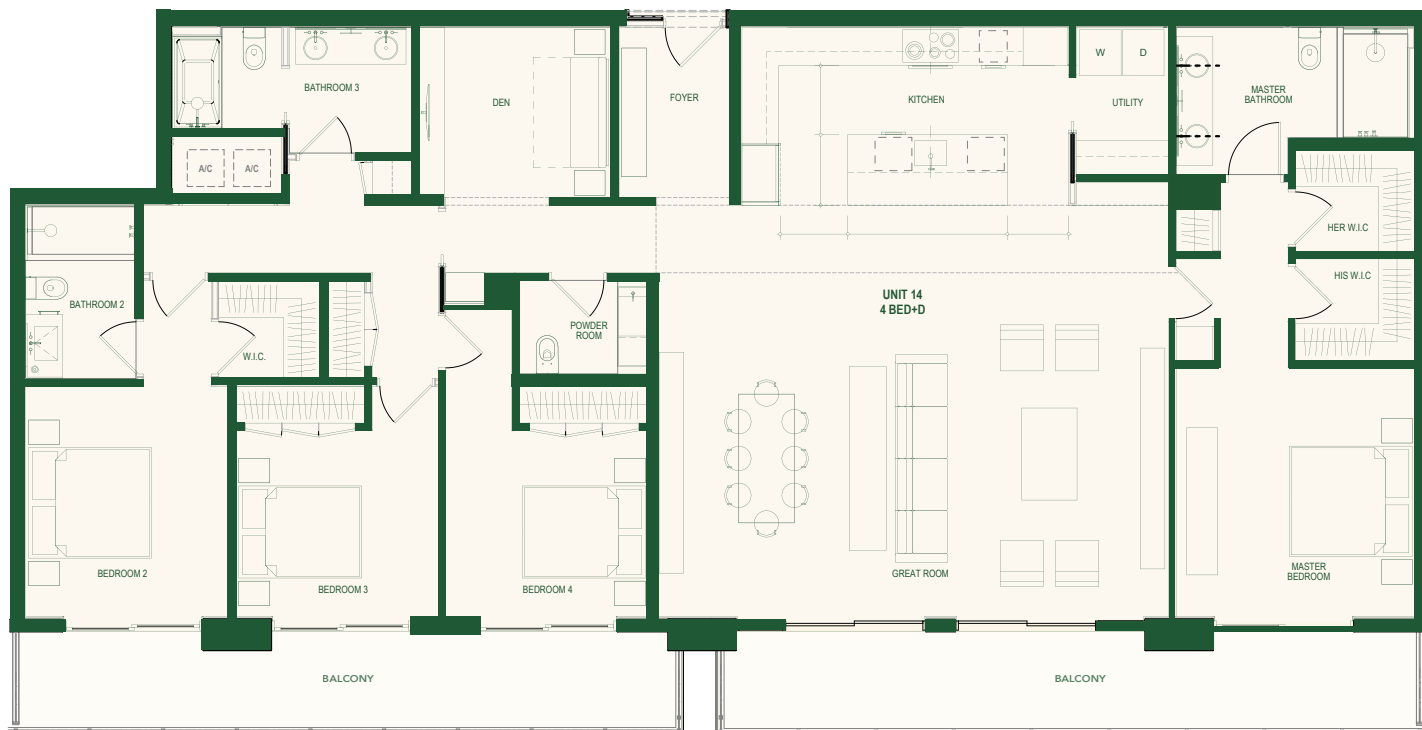
4 BEDROOM + DEN

3.5 BATHROOMS

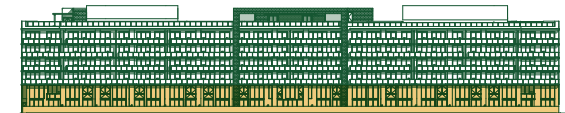
INTERIOR	2,489 SF / 231 M ²
BALCONY	442 SF / 41 M ²
TOTAL	2931 SF / 272 M ²



BRICKELL AVE.

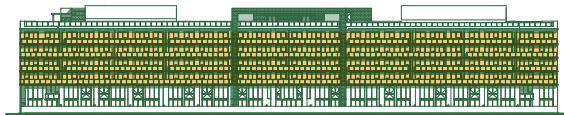
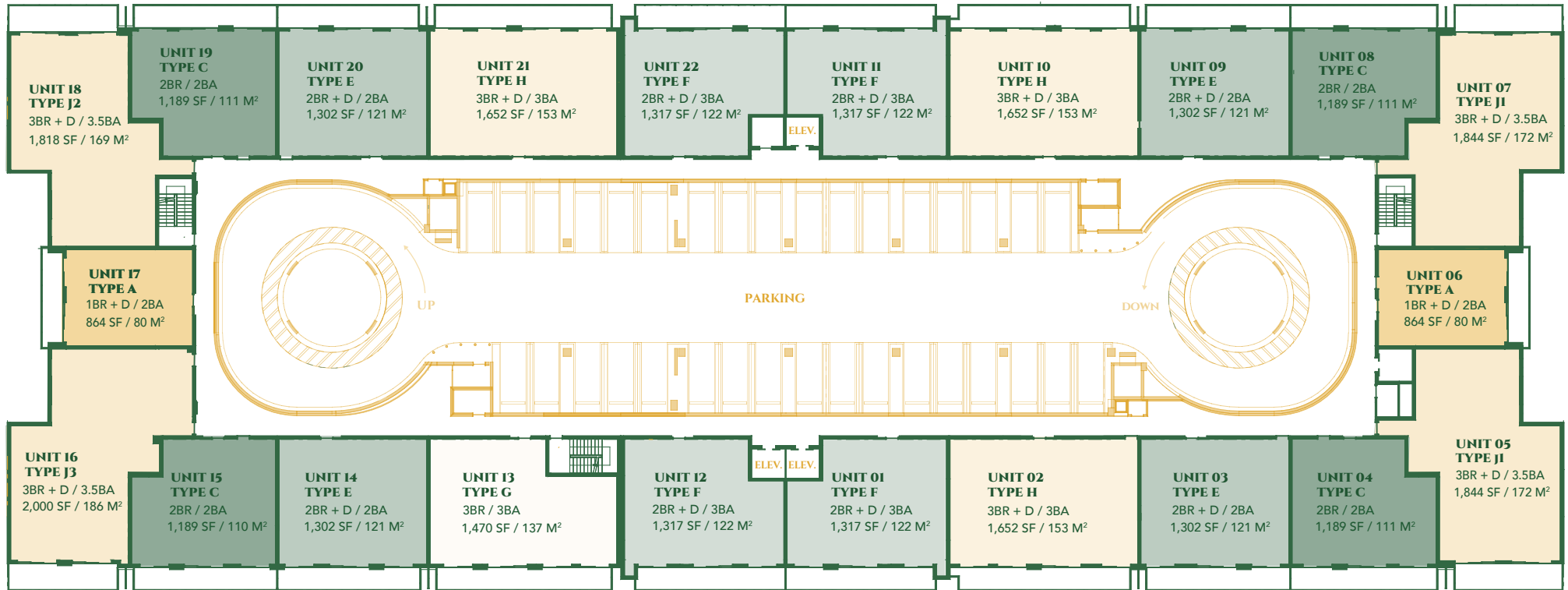


These drawings are conceptual only and are for the convenience of reference. They should not be relied upon as representations, express or implied, of the final detail of the residences. Units shown are examples of unit types and may not depict actual units. Stated square footages are ranges for a particular unit type and are measured to the exterior boundaries of the exterior walls and the centerline of interior demising walls and in fact vary from the area that would be determined by using the description and definition of the unit set forth in the declaration (which generally only includes the interior airspace between the perimeter walls and excludes interior structural components). Note that measurements of rooms set forth on this floorplan are generally taken at the greatest points of each given room (as if the room were a perfect rectangle), without regard for any cutouts. Accordingly, the area of the actual room will typically be smaller than the product obtained by multiplying the stated length times width. All dimensions are approximate and may vary with actual construction, and all floor plans and development plans are subject to change.



RESIDENCE MIX

1 Bedroom	2
2 Bedrooms	2
2 Bedrooms + Office	9
2 Bedrooms + Den + Office	2
4 Bedrooms	2



RESIDENCE MIX

1 Bedroom + Den	2
2 Bedrooms	4
2 Bedroom + Den	8
3 Bedrooms	1
3 Bedroom + Den	7