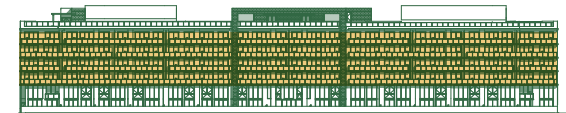
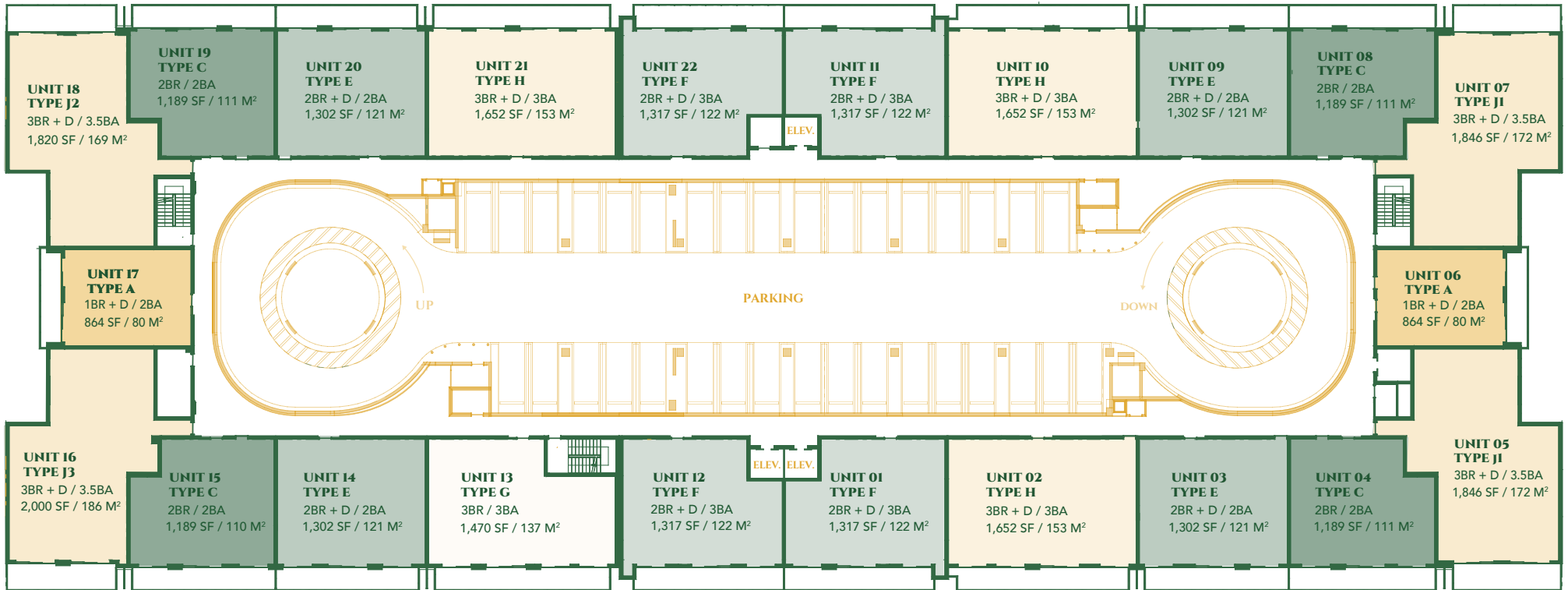


MIX  
RESIDENCIAL

1 Dormitorio	2
2 Dormitorios	6
2 Dormitorios + Oficina	9
2 Dormitorios + Den + Oficina	2
4 Dormitorios	2



MIX  
RESIDENCIAL

1 Dormitorio + Sala de estar	2
2 Dormitorios	4
2 Dormitorios + Sala de estar	8
3 Dormitorios	1
3 Dormitorios + Sala de estar	7

# 2200 BRICKELL

## TIPO L4/L5

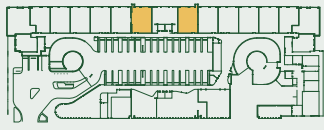
RESIDENCIAS CON JARDÍN  
108, 110

2 DORMITORIOS + OFICINA

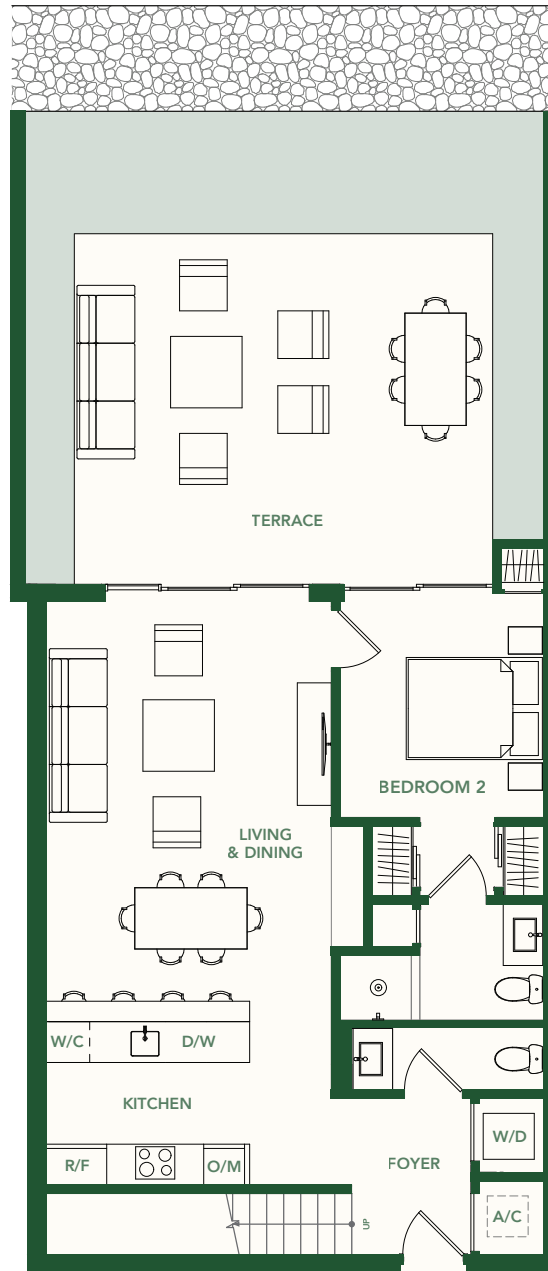
2.5 BAÑOS

SEGUNDO NIVEL

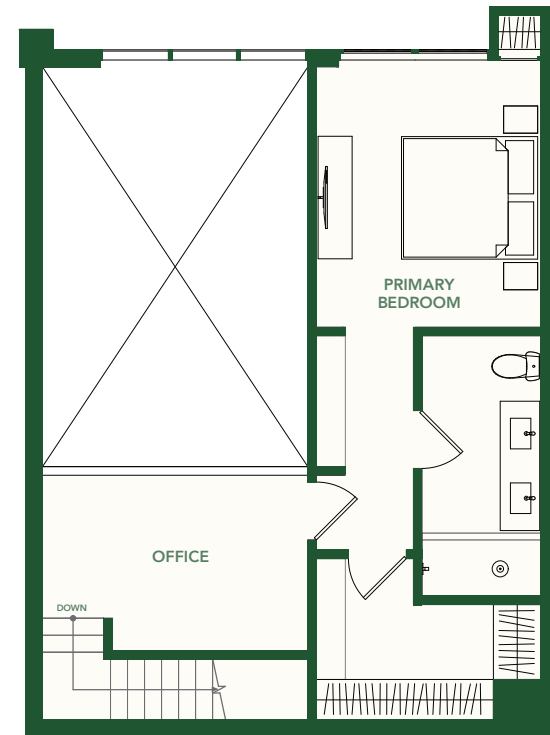
INTERIOR 1,462 SF / 136 M<sup>2</sup>  
TERRAZA 725 SF / 67 M<sup>2</sup>  
TOTAL 2,187 SF / 203 M<sup>2</sup>



BRICKELL AVE.



**GROUND LEVEL**  
Interior - 850 SF / 79 M<sup>2</sup>



**SECOND LEVEL**  
Interior - 576 SF / 54 M<sup>2</sup>



These drawings are conceptual only and are for the convenience of reference. They should not be relied upon as representations, express or implied, of the final detail of the residences. Units shown are examples of unit types and may not depict actual units. Stated square footages are ranges for a particular unit type and are measured to the exterior boundaries of the exterior walls and the centerline of interior demising walls and in fact vary from the area that would be determined by using the description and definition of the unit set forth in the declaration (which generally only includes the interior airspace between the perimeter walls and excludes interior structural components). Note that measurements of rooms set forth on this floorplan are generally taken at the greatest points of each given room (as if the room were a perfect rectangle), without regard for any cutouts. Accordingly, the area of the actual room will typically be smaller than the product obtained by multiplying the stated length times width. All dimensions are approximate and may vary with actual construction, and all floor plans and development plans are subject to change.

## TIPO L3/L6

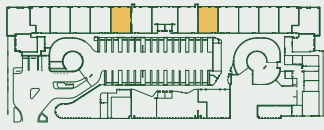
RESIDENCIAS CON JARDÍN  
107, 111

2 DORMITORIOS + OFICINA

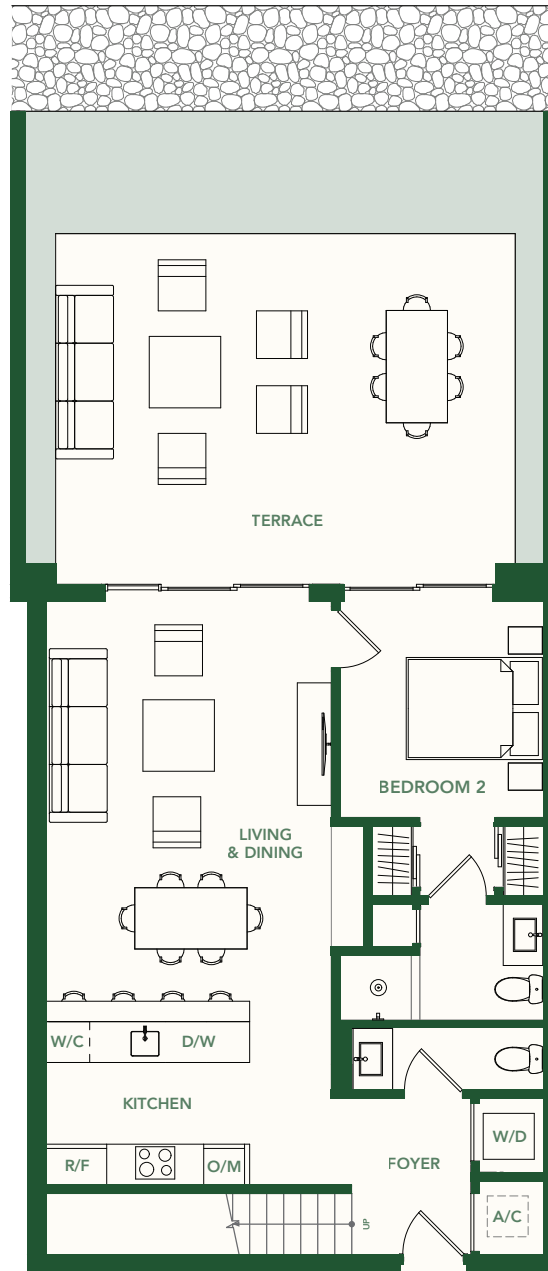
2.5 BAÑOS

SEGUNDO NIVEL

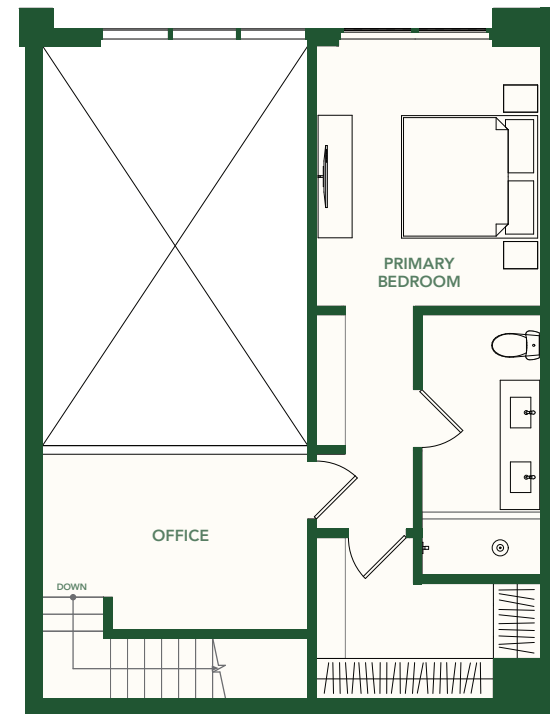
INTERIOR	1,434 SF / 133 M <sup>2</sup>
TERRAZA	737 SF / 68 M <sup>2</sup>
TOTAL	2,171 SF / 201 M <sup>2</sup>



BRICKELL AVE.



**GROUND LEVEL**  
Interior - 850 SF / 79 M<sup>2</sup>



**SECOND LEVEL**  
Interior - 576 SF / 54 M<sup>2</sup>



These drawings are conceptual only and are for the convenience of reference. They should not be relied upon as representations, express or implied, of the final detail of the residences. Units shown are examples of unit types and may not depict actual units. Stated square footages are ranges for a particular unit type and are measured to the exterior boundaries of the exterior walls and the centerline of interior demising walls and in fact vary from the area that would be determined by using the description and definition of the unit set forth in the declaration (which generally only includes the interior airspace between the perimeter walls and excludes interior structural components). Note that measurements of rooms set forth on this floorplan are generally taken at the greatest points of each given room (as if the room were a perfect rectangle), without regard for any cutouts. Accordingly, the area of the actual room will typically be smaller than the product obtained by multiplying the stated length times width. All dimensions are approximate and may vary with actual construction, and all floor plans and development plans are subject to change.

# 2200 BRICKELL

## TIPO L2/L7

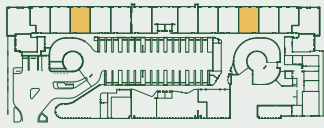
RESIDENCIAS CON JARDÍN  
105, 113

2 DORMITORIOS + OFICINA

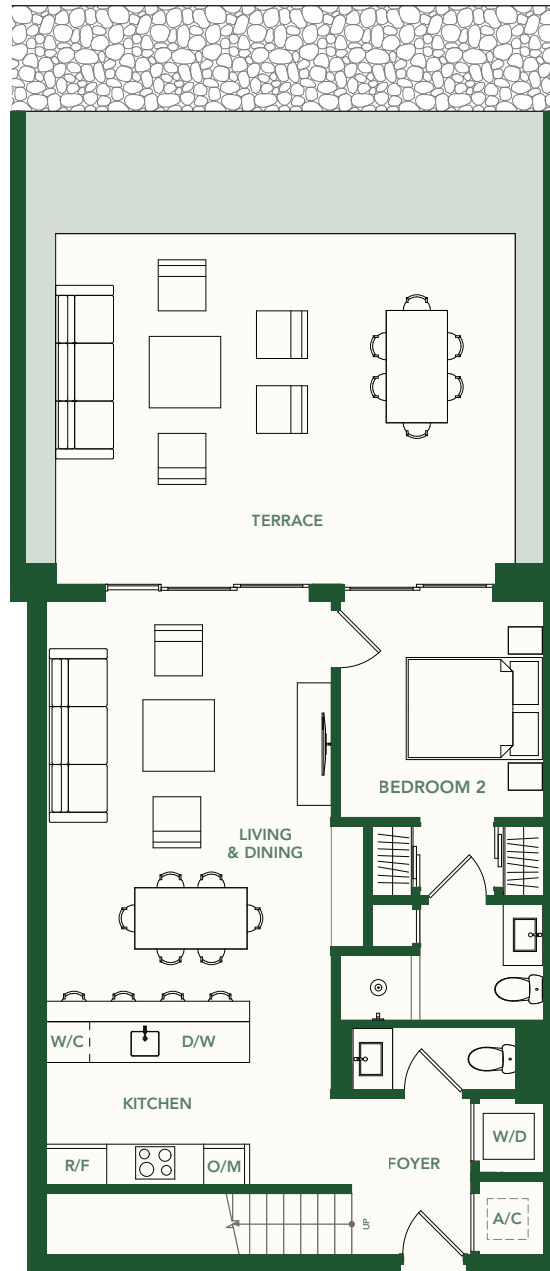
2.5 BAÑOS

SEGUNDO NIVEL

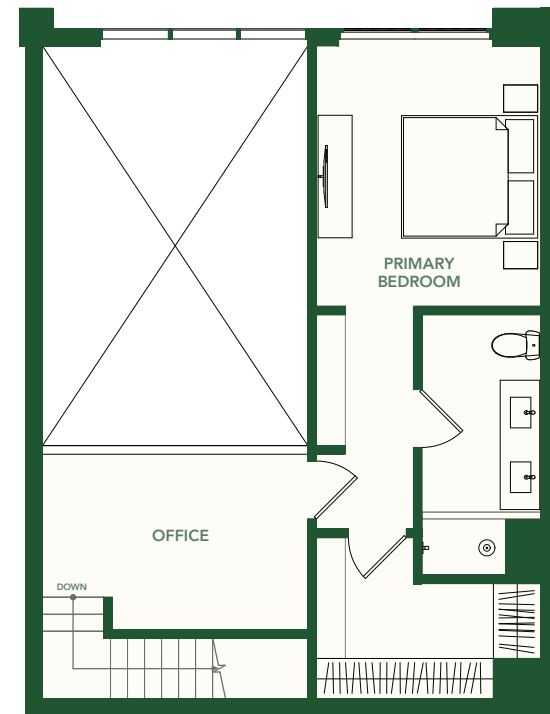
INTERIOR	1,426 SF / 133 M <sup>2</sup>
TERRAZA	720 SF / 67 M <sup>2</sup>
TOTAL	2,146 SF / 200 M <sup>2</sup>



BRICKELL AVE.



**GROUND LEVEL**  
Interior - 850 SF / 79 M<sup>2</sup>



**SECOND LEVEL**  
Interior - 576 SF / 54 M<sup>2</sup>



These drawings are conceptual only and are for the convenience of reference. They should not be relied upon as representations, express or implied, of the final detail of the residences. Units shown are examples of unit types and may not depict actual units. Stated square footages are ranges for a particular unit type and are measured to the exterior boundaries of the exterior walls and the centerline of interior demising walls and in fact vary from the area that would be determined by using the description and definition of the unit set forth in the declaration (which generally only includes the interior airspace between the perimeter walls and excludes interior structural components). Note that measurements of rooms set forth on this floorplan are generally taken at the greatest points of each given room (as if the room were a perfect rectangle), without regard for any cutouts. Accordingly, the area of the actual room will typically be smaller than the product obtained by multiplying the stated length times width. All dimensions are approximate and may vary with actual construction, and all floor plans and development plans are subject to change.

# 2200 BRICKELL

## TIPO L1/L8

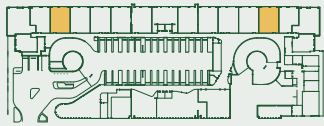
RESIDENCIAS CON JARDÍN  
104, 114

2 DORMITORIOS + OFICINA

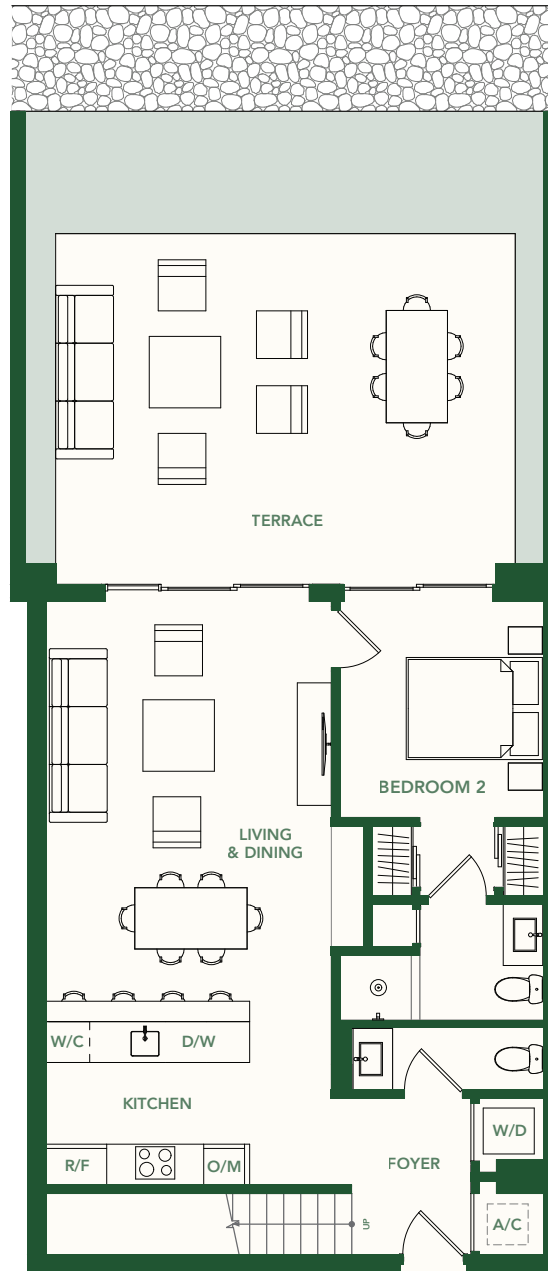
2.5 BAÑOS

SEGUNDO NIVEL

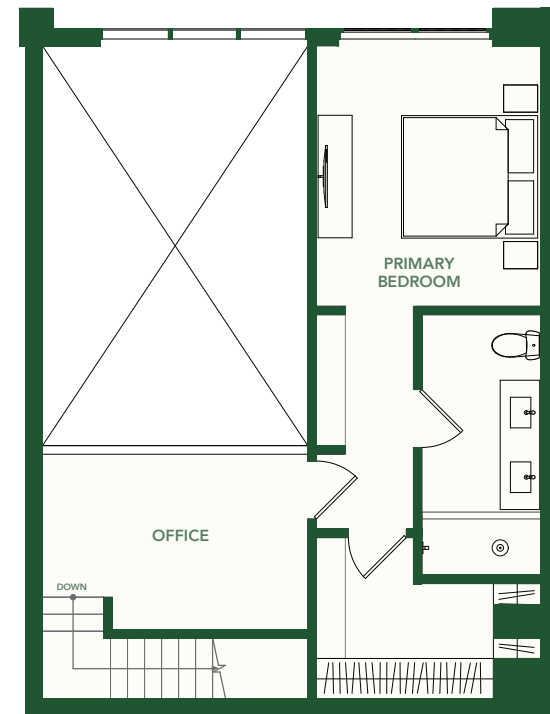
INTERIOR	1,426 SF / 133 M <sup>2</sup>
TERRAZA	759 SF / 71 M <sup>2</sup>
TOTAL	2,185 SF / 206 M <sup>2</sup>



BRICKELL AVE.



**GROUND LEVEL**  
Interior - 850 SF / 79 M<sup>2</sup>



**SECOND LEVEL**  
Interior - 576 SF / 54 M<sup>2</sup>



These drawings are conceptual only and are for the convenience of reference. They should not be relied upon as representations, express or implied, of the final detail of the residences. Units shown are examples of unit types and may not depict actual units. Stated square footages are ranges for a particular unit type and are measured to the exterior boundaries of the exterior walls and the centerline of interior demising walls and in fact vary from the area that would be determined by using the description and definition of the unit set forth in the declaration (which generally only includes the interior airspace between the perimeter walls and excludes interior structural components). Note that measurements of rooms set forth on this floorplan are generally taken at the greatest points of each given room (as if the room were a perfect rectangle), without regards for any cutouts. Accordingly, the area of the actual room will typically be smaller than the product obtained by multiplying the stated length times width. All dimensions are approximate and may vary with actual construction, and all floor plans and development plans are subject to change.

# 2200 BRICKELL

## TIPO M

RESIDENCIAS CON JARDÍN  
106, 112

2 DORMITORIOS + DEN + OFICINA

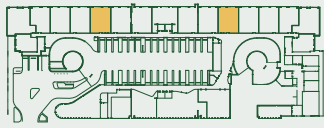
2.5 BAÑOS

SEGUNDO NIVEL

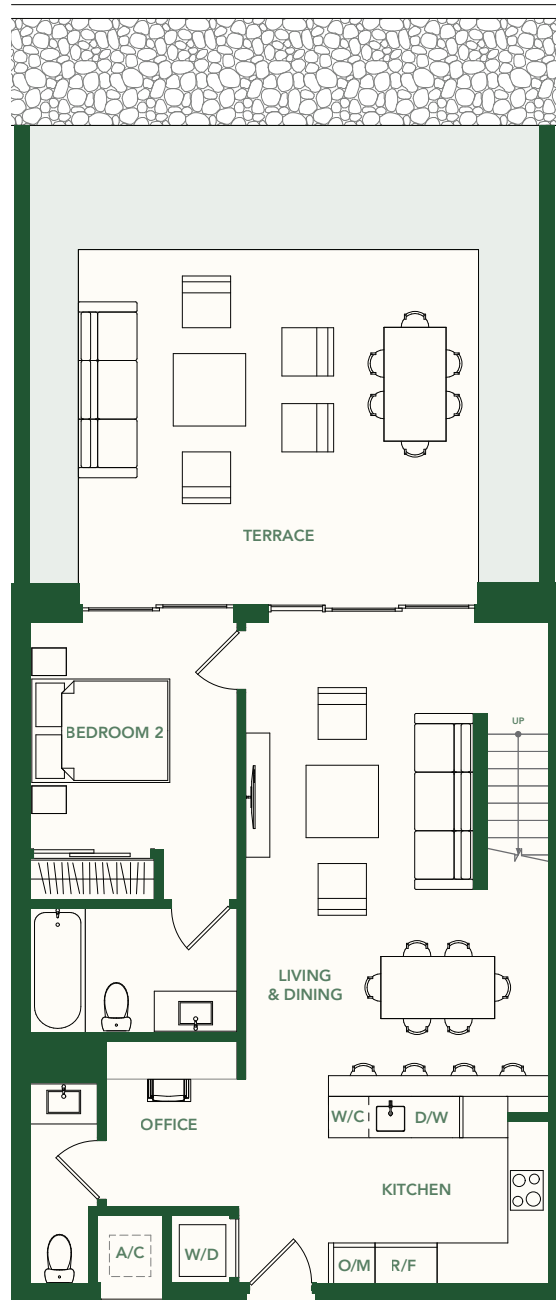
INTERIOR 1,458 SF / 135 M<sup>2</sup>

TERRAZA 391 SF / 36 M<sup>2</sup>

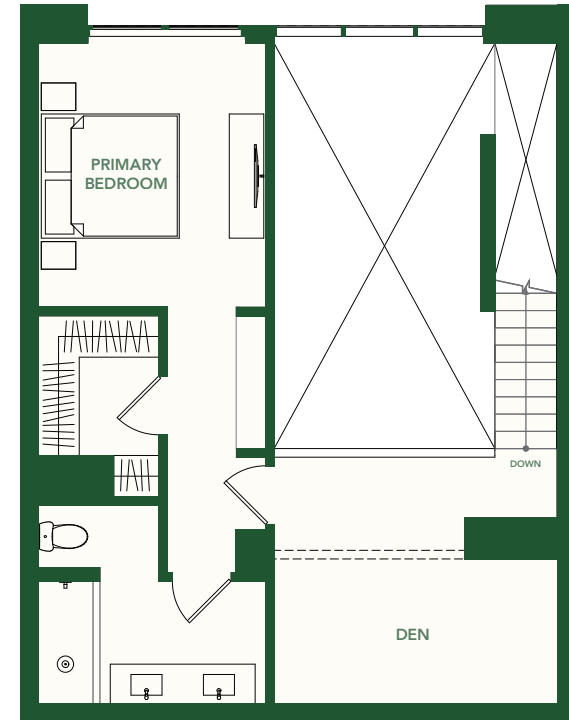
TOTAL 1,849 SF / 171 M<sup>2</sup>



BRICKELL AVE.



**GROUND LEVEL**  
Interior - 873 SF / 81 M<sup>2</sup>



**SECOND LEVEL**  
Interior - 585 SF / 54 M<sup>2</sup>



These drawings are conceptual only and are for the convenience of reference. They should not be relied upon as representations, express or implied, of the final detail of the residences. Units shown are examples of unit types and may not depict actual units. Stated square footages are ranges for a particular unit type and are measured to the exterior boundaries of the exterior walls and the centerline of interior demising walls and in fact vary from the area that would be determined by using the description and definition of the unit set forth in the declaration (which generally only includes the interior airspace between the perimeter walls and excludes interior structural components). Note that measurements of rooms set forth on this floorplan are generally taken at the greatest points of each given room (as if the room were a perfect rectangle), without regards for any cutouts. Accordingly, the area of the actual room will typically be smaller than the product obtained by multiplying the stated length times width. All dimensions are approximate and may vary with actual construction, and all floor plans and development plans are subject to change.

# 2200 BRICKELL

## TIPO J3.1

UNIDADE 16

3 DORMITORIOS + DEN

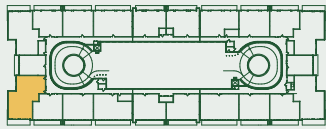
3.5 BAÑOS

NIVELES 2

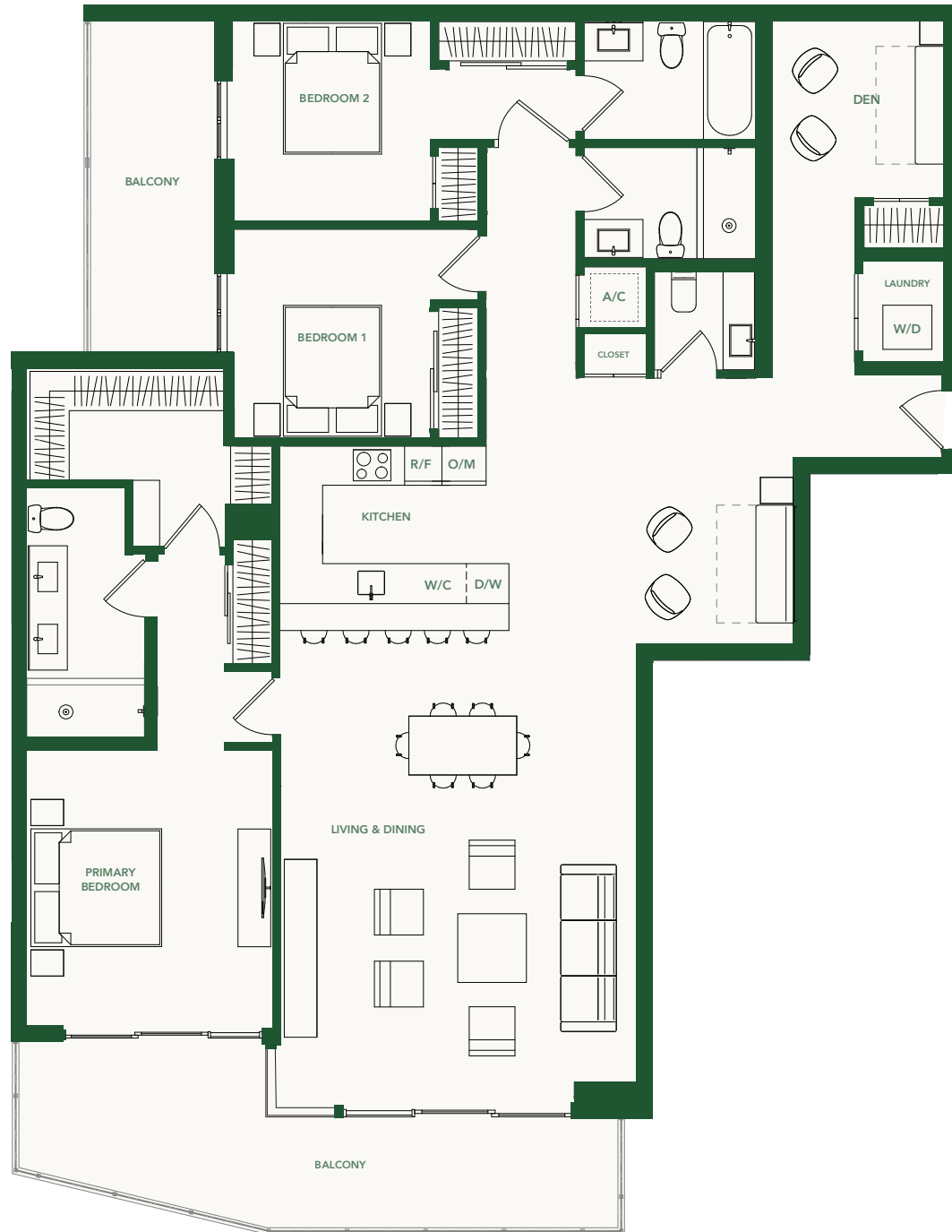
**INTERIOR** 2,000 SF / 186 M<sup>2</sup>

**BALCÓN** 307 SF / 29 M<sup>2</sup>

**TOTAL** 2,307 SF / 215 M<sup>2</sup>



BRICKELL AVE.



These drawings are conceptual only and are for the convenience of reference. They should not be relied upon as representations, express or implied, of the final detail of the residences. Units shown are examples of unit types and may not depict actual units. Stated square footages are ranges for a particular unit type and are measured to the exterior boundaries of the exterior walls and the centerline of interior demising walls and in fact vary from the area that would be determined by using the description and definition of the unit set forth in the declaration (which generally only includes the interior airspace between the perimeter walls and excludes interior structural components). Note that measurements of rooms set forth on this floorplan are generally taken at the greatest points of each given room (as if the room were a perfect rectangle), without regards for any cutouts. Accordingly, the area of the actual room will typically be smaller than the product obtained by multiplying the stated length times width. All dimensions are approximate and may vary with actual construction, and all floor plans and development plans are subject to change.



# 2200 BRICKELL

## TIPO L

RESIDENCIAS CON JARDÍN  
107, 111

2 DORMITORIOS + OFICINA

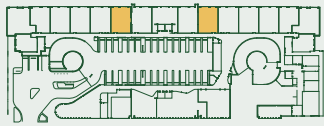
2.5 BAÑOS

SEGUNDO NIVEL

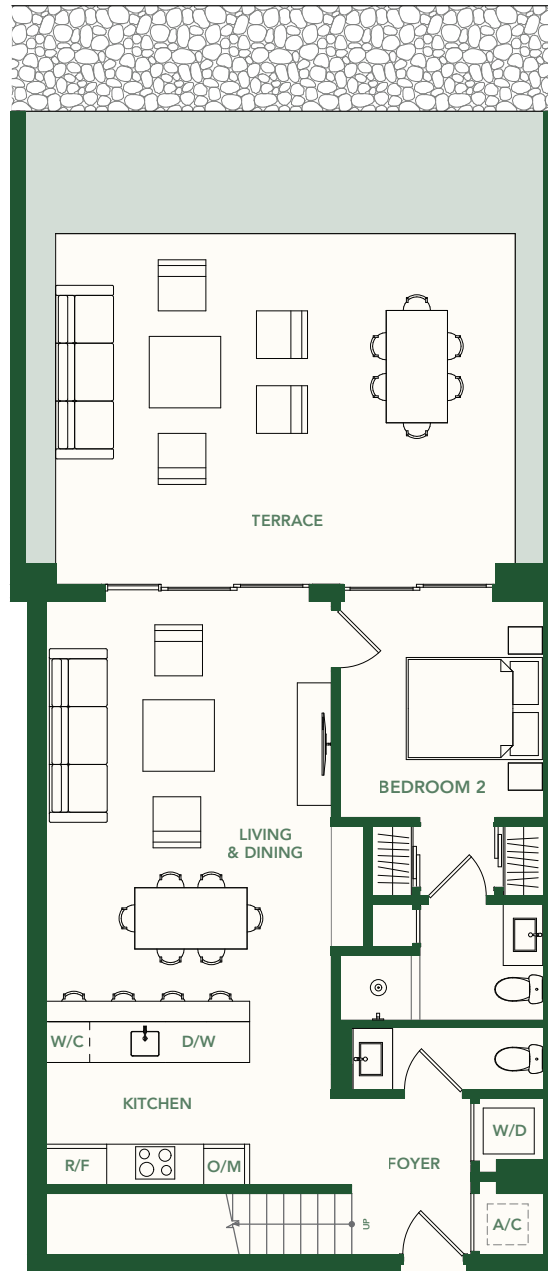
INTERIOR 1,426 SF / 133 M<sup>2</sup>

TERRAZA 388 SF / 36 M<sup>2</sup>

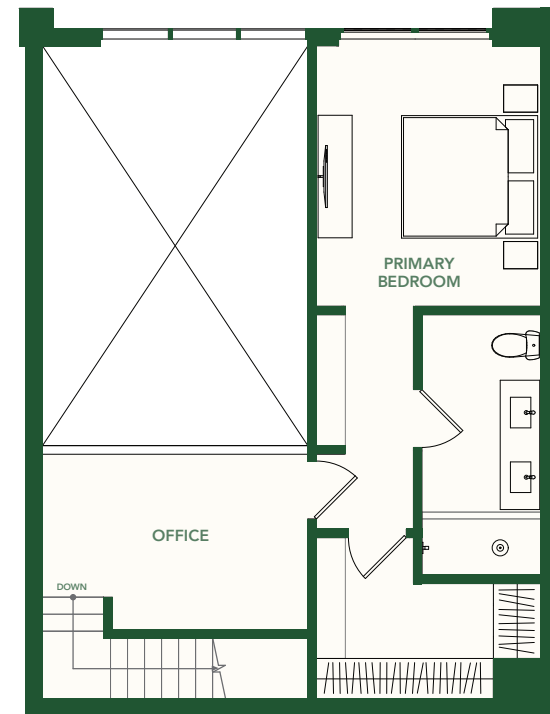
TOTAL 1,814 SF / 169 M<sup>2</sup>



BRICKELL AVE.



**GROUND LEVEL**  
Interior - 850 SF / 79 M<sup>2</sup>



**SECOND LEVEL**  
Interior - 576 SF / 54 M<sup>2</sup>



These drawings are conceptual only and are for the convenience of reference. They should not be relied upon as representations, express or implied, of the final detail of the residences. Units shown are examples of unit types and may not depict actual units. Stated square footages are ranges for a particular unit type and are measured to the exterior boundaries of the exterior walls and the centerline of interior demising walls and in fact vary from the area that would be determined by using the description and definition of the unit set forth in the declaration (which generally only includes the interior airspace between the perimeter walls and excludes interior structural components). Note that measurements of rooms set forth on this floorplan are generally taken at the greatest points of each given room (as if the room were a perfect rectangle), without regard for any cutouts. Accordingly, the area of the actual room will typically be smaller than the product obtained by multiplying the stated length times width. All dimensions are approximate and may vary with actual construction, and all floor plans and development plans are subject to change.

# 2200 BRICKELL

## TIPO N

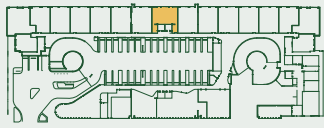
RESIDENCIAS CON JARDÍN  
109

2 DORMITORIOS + OFICINA

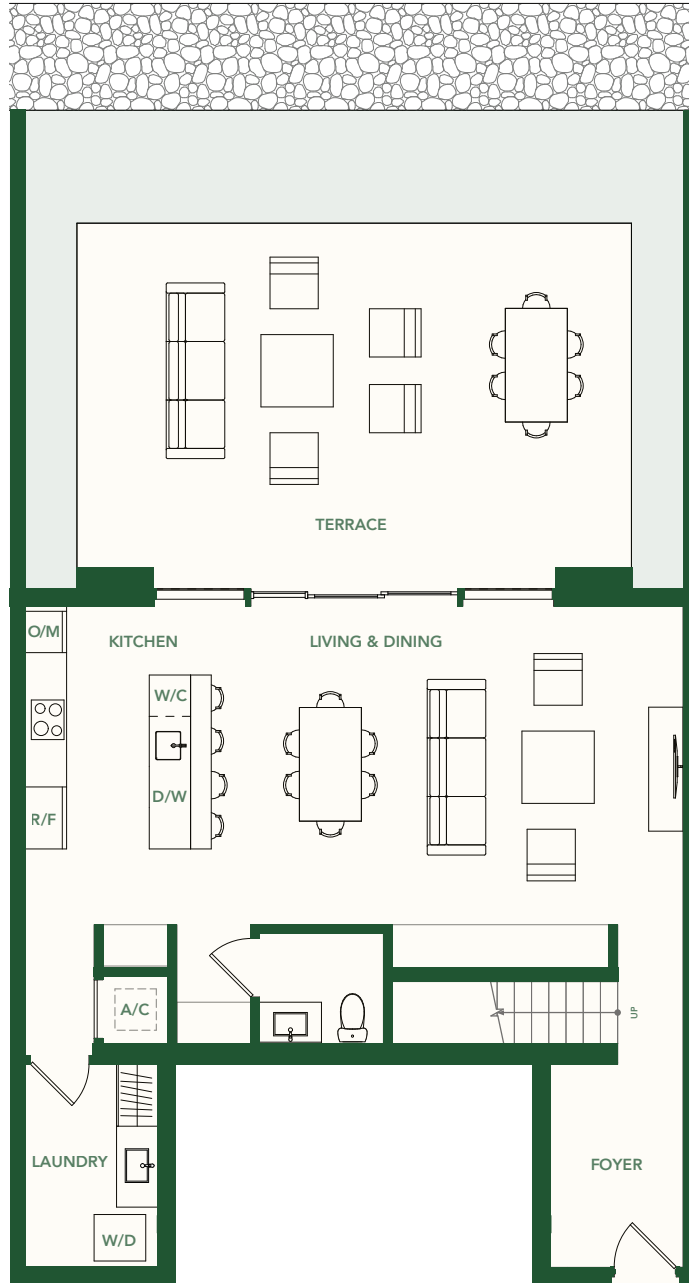
2.5 BAÑOS

SEGUNDO NIVEL

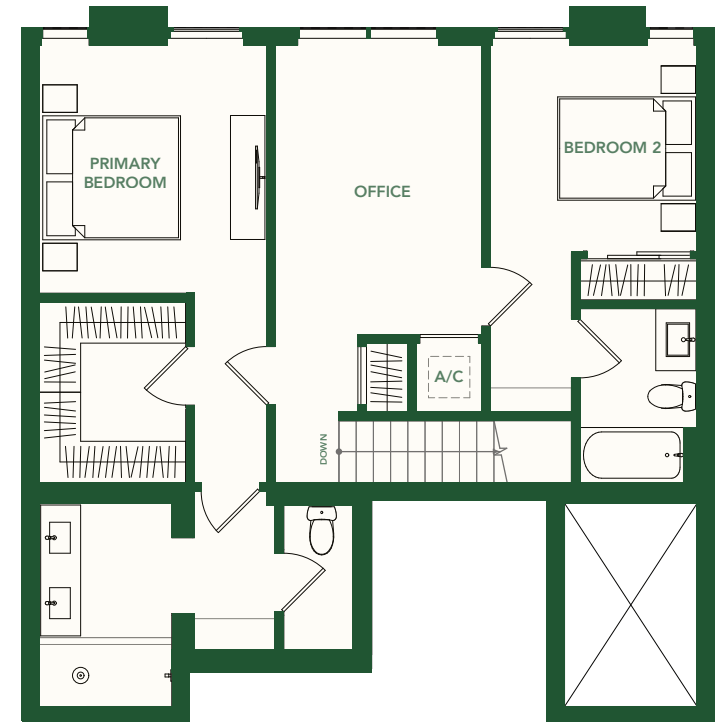
**INTERIOR** 1,793 SF / 167 M<sup>2</sup>  
**TERRAZA** 468 SF / 44 M<sup>2</sup>  
**TOTAL** 2,261 SF / 211 M<sup>2</sup>



BRICKELL AVE.



**GROUND LEVEL**  
Interior - 899 SF / 84 M<sup>2</sup>



**SECOND LEVEL**  
Interior - 894 SF / 83 M<sup>2</sup>



These drawings are conceptual only and are for the convenience of reference. They should not be relied upon as representations, express or implied, of the final detail of the residences. Units shown are examples of unit types and may not depict actual units. Stated square footages are ranges for a particular unit type and are measured to the exterior boundaries of the exterior walls and the centerline of interior demising walls and in fact vary from the area that would be determined by using the description and definition of the unit set forth in the declaration (which generally only includes the interior airspace between the perimeter walls and excludes interior structural components). Note that measurements of rooms set forth on this floorplan are generally taken at the greatest points of each given room (as if the room were a perfect rectangle), without regards for any cutouts. Accordingly, the area of the actual room will typically be smaller than the product obtained by multiplying the stated length times width. All dimensions are approximate and may vary with actual construction, and all floor plans and development plans are subject to change.

**MARIA LARGO** **PL&E**  
DEVELOPER/BUILDER PRODUCTS

# 2200 BRICKELL

## TIPO J3

UNIDADE 16

3 DORMITORIOS + DEN

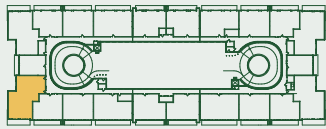
3.5 BAÑOS

NIVELES 3 - 5

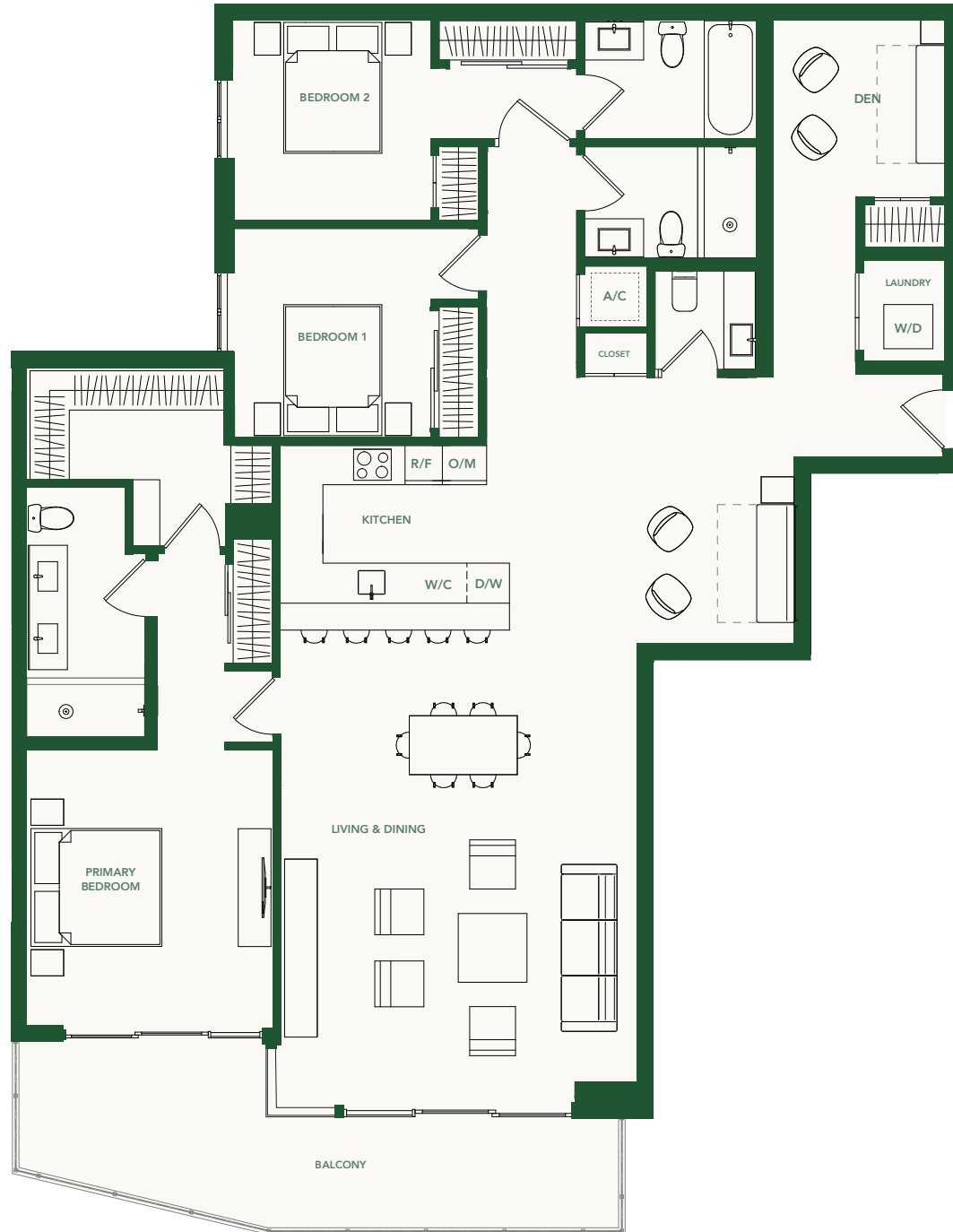
**INTERIOR** 2,000 SF / 186 M<sup>2</sup>

**BALCÓN** 307 SF / 29 M<sup>2</sup>

**TOTAL** 2,307 SF / 215 M<sup>2</sup>



BRICKELL AVE.



These drawings are conceptual only and are for the convenience of reference. They should not be relied upon as representations, express or implied, of the final detail of the residences. Units shown are examples of unit types and may not depict actual units. Stated square footages are ranges for a particular unit type and are measured to the exterior boundaries of the exterior walls and the centerline of interior demising walls and in fact vary from the area that would be determined by using the description and definition of the unit set forth in the declaration (which generally only includes the interior airspace between the perimeter walls and excludes interior structural components). Note that measurements of rooms set forth on this floorplan are generally taken at the greatest points of each given room (as if the room were a perfect rectangle), without regards for any cutouts. Accordingly, the area of the actual room will typically be smaller than the product obtained by multiplying the stated length times width. All dimensions are approximate and may vary with actual construction, and all floor plans and development plans are subject to change.

# 2200 BRICKELL

## TIPO P

RESIDENCIAS CON JARDÍN  
116

4 DORMITORIOS

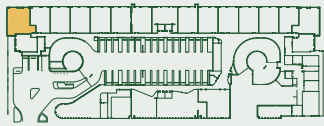
3.5 BAÑOS

SEGUNDO NIVEL

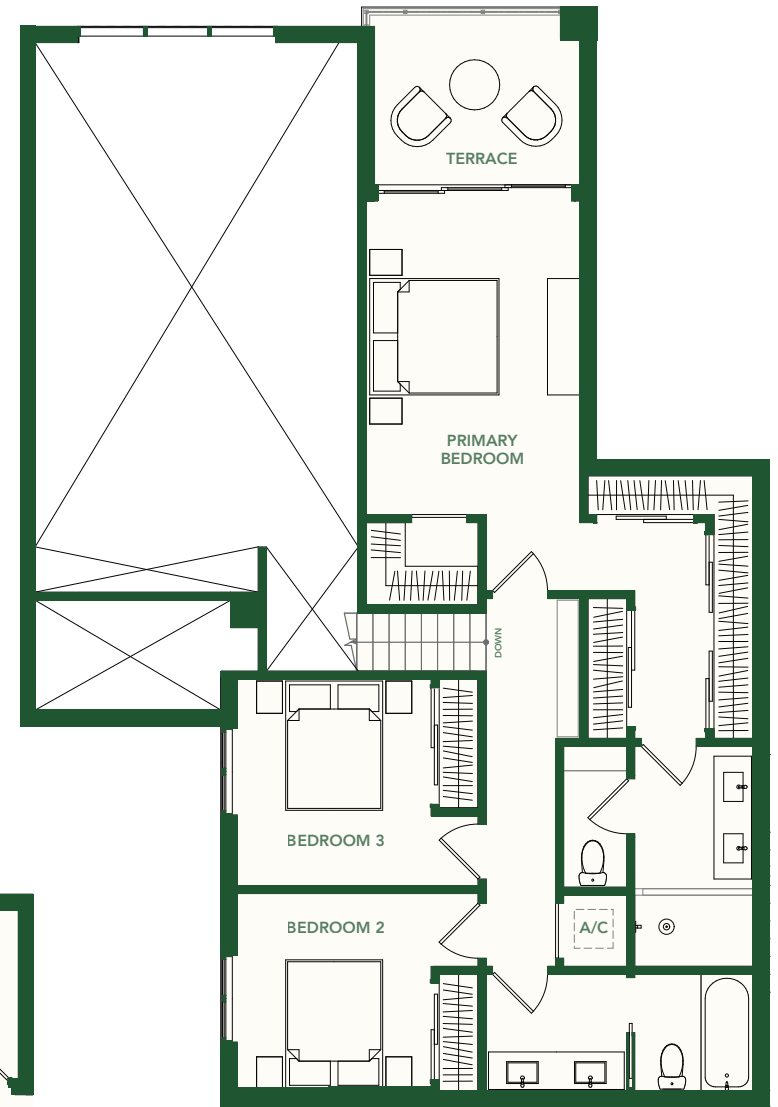
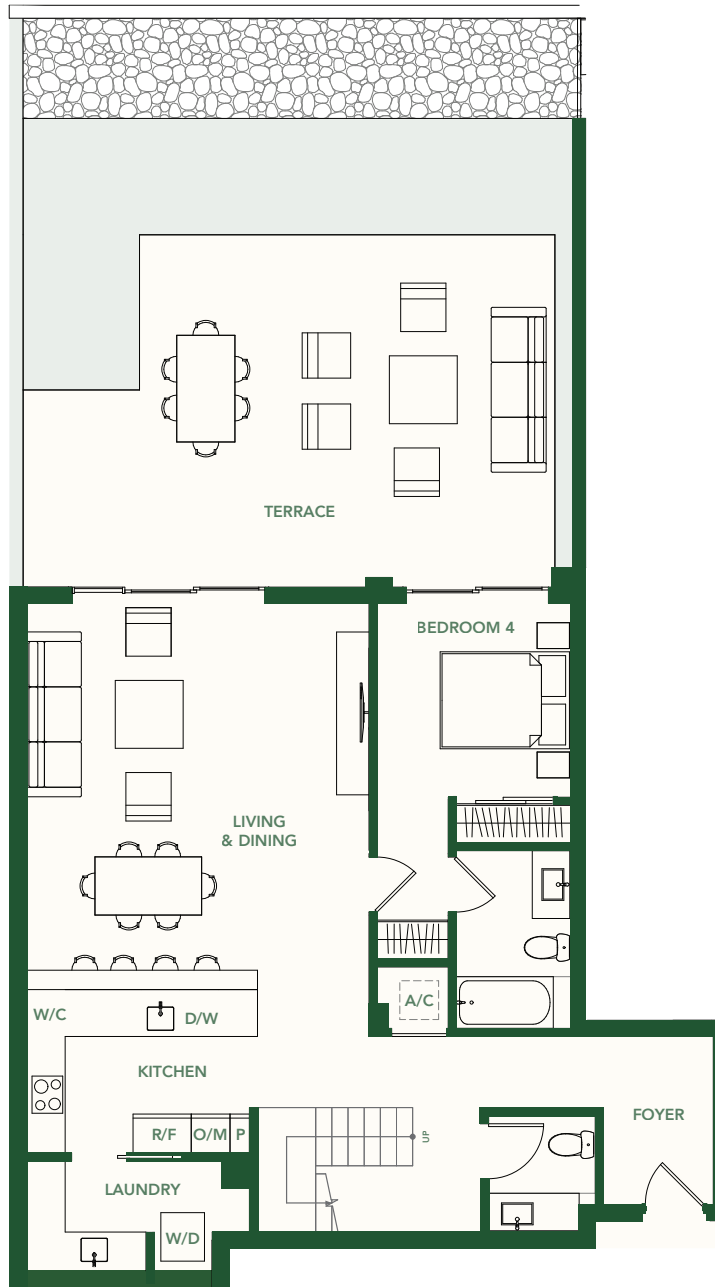
INTERIOR 2,069 SF / 192 M<sup>2</sup>

TERRAZA 540 SF / 50 M<sup>2</sup>

TOTAL 2,609 SF / 242 M<sup>2</sup>



BRICKELL AVE.



These drawings are conceptual only and are for the convenience of reference. They should not be relied upon as representations, express or implied, of the final detail of the residences. Units shown are examples of unit types and may not depict actual units. Stated square footages are ranges for a particular unit type and are measured to the exterior boundaries of the exterior walls and the centerline of interior demising walls and in fact vary from the area that would be determined by using the description and definition of the unit set forth in the declaration (which generally only includes the interior airspace between the perimeter walls and excludes interior structural components). Note that measurements of rooms set forth on this floorplan are generally taken at the greatest points of each given room (as if the room were a perfect rectangle), without regards for any cutouts. Accordingly, the area of the actual room will typically be smaller than the product obtained by multiplying the stated length times width. All dimensions are approximate and may vary with actual construction, and all floor plans and development plans are subject to change.

**MARIA LARGO** **PLACE**  
DEVELOPER/BUILDER PROJECTS

# 2200 BRICKELL

## TIPO O

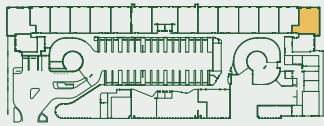
RESIDENCIAS CON JARDÍN  
102

4 DORMITORIOS

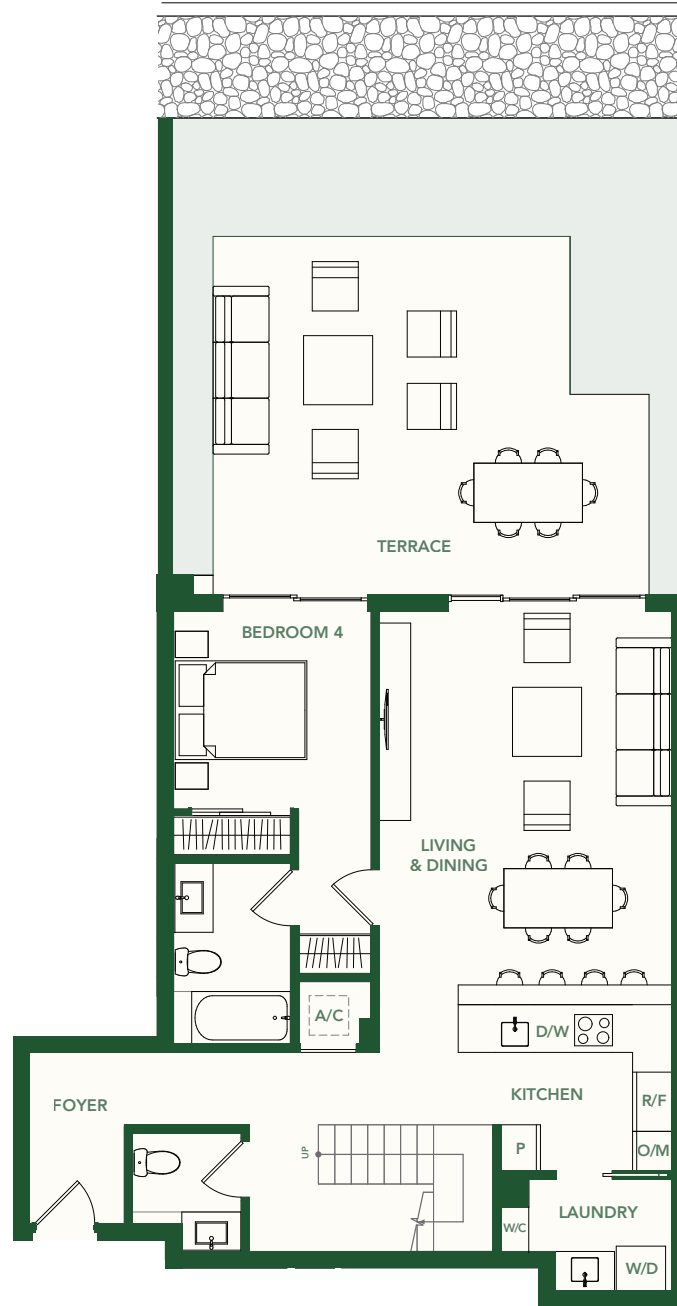
3.5 BAÑOS

SEGUNDO NIVEL

INTERIOR	1,973 SF / 183 M <sup>2</sup>
TERRAZA	459 SF / 43 M <sup>2</sup>
TOTAL	2,432 SF / 226 M <sup>2</sup>

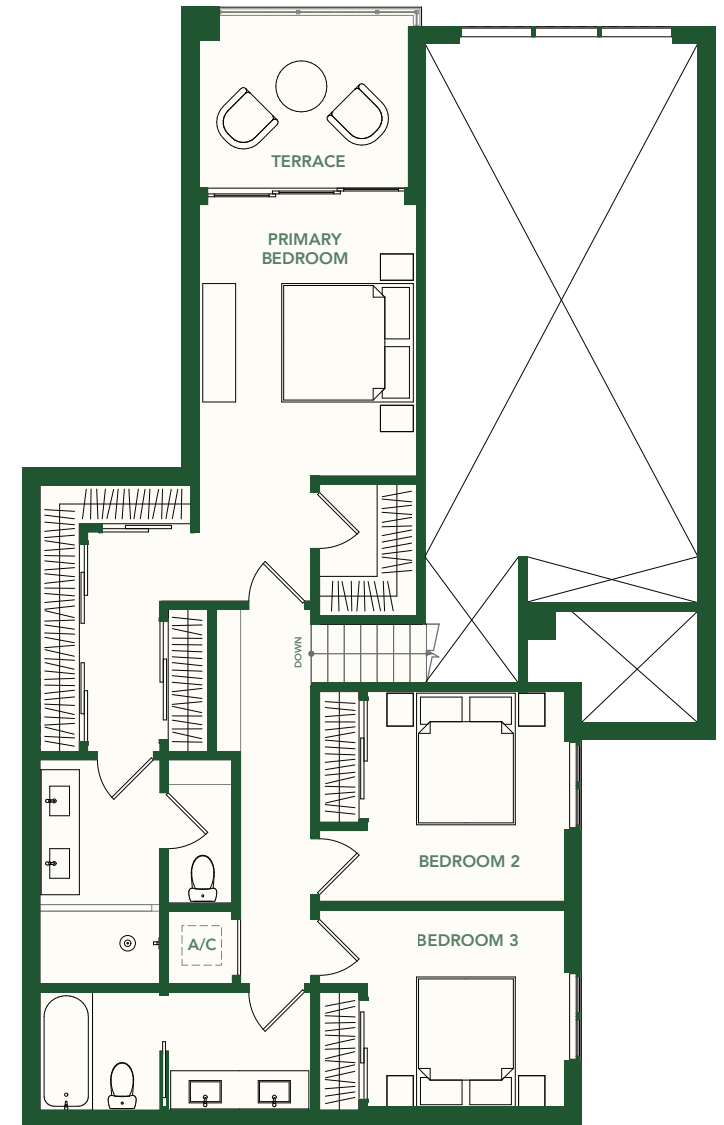


BRICKELL AVE.



### GROUND LEVEL

Interior - 996 SF / 93 M<sup>2</sup>  
Terrace - 368 SF / 34 M<sup>2</sup>



### SECOND LEVEL

Interior - 977 SF / 91 M<sup>2</sup>  
Terrace - 91 SF / 9 M<sup>2</sup>



These drawings are conceptual only and are for the convenience of reference. They should not be relied upon as representations, express or implied, of the final detail of the residences. Units shown are examples of unit types and may not depict actual units. Stated square footages are ranges for a particular unit type and are measured to the exterior boundaries of the exterior walls and the centerline of interior demising walls and in fact vary from the area that would be determined by using the description and definition of the unit set forth in the declaration (which generally only includes the interior airspace between the perimeter walls and excludes interior structural components). Note that measurements of rooms set forth on this floorplan are generally taken at the greatest points of each given room (as if the room were a perfect rectangle), without regards for any cutouts. Accordingly, the area of the actual room will typically be smaller than the product obtained by multiplying the stated length times width. All dimensions are approximate and may vary with actual construction, and all floor plans and development plans are subject to change.

**MARIA LARGO** **PL&E**  
DEVELOPER/BUILDER PROJECTS

# 2200 BRICKELL

## TIPO K

RESIDENCIAS CON JARDÍN  
103, 115

2 DORMITORIOS

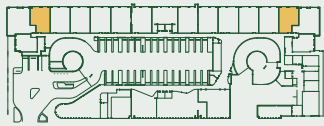
2 BAÑOS

SEGUNDO NIVEL

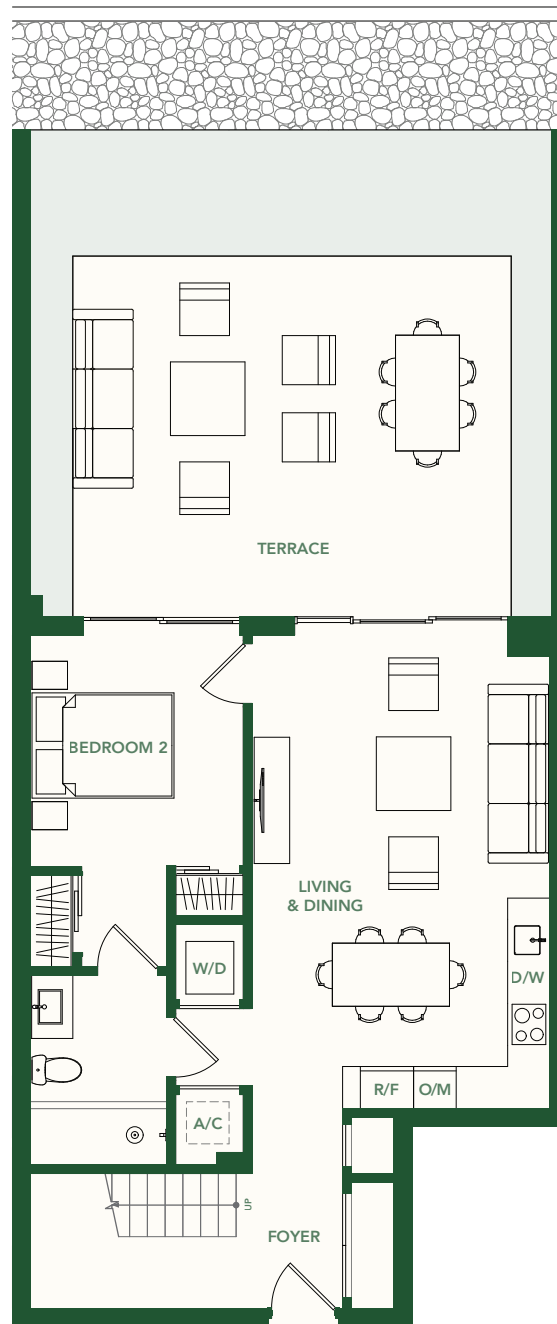
INTERIOR 1,233 SF / 115 M<sup>2</sup>

TERRAZA 353 SF / 33 M<sup>2</sup>

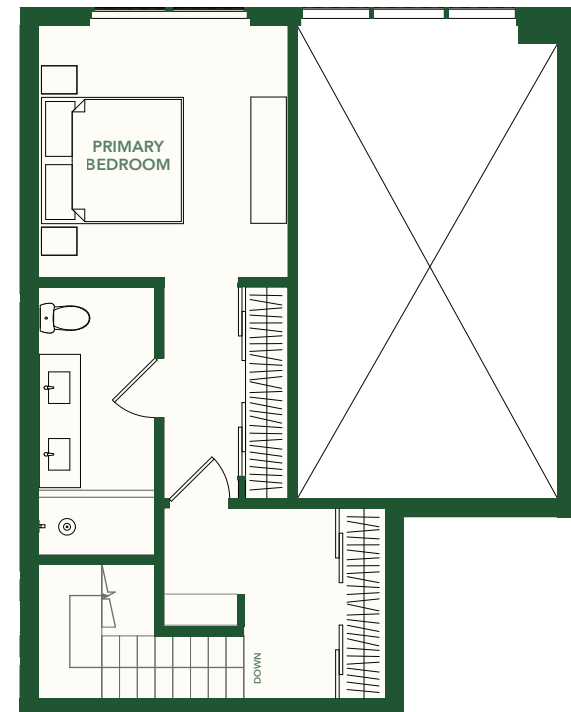
TOTAL 1,586 SF / 148 M<sup>2</sup>



BRICKELL AVE.



**GROUND LEVEL**  
Interior - 762 SF / 71 M<sup>2</sup>



**SECOND LEVEL**  
Interior - 471 SF / 44 M<sup>2</sup>



These drawings are conceptual only and are for the convenience of reference. They should not be relied upon as representations, express or implied, of the final detail of the residences. Units shown are examples of unit types and may not depict actual units. Stated square footages are ranges for a particular unit type and are measured to the exterior boundaries of the exterior walls and the centerline of interior demising walls and in fact vary from the area that would be determined by using the description and definition of the unit set forth in the declaration (which generally only includes the interior airspace between the perimeter walls and excludes interior structural components). Note that measurements of rooms set forth on this floor plan are generally taken at the greatest points of each given room (as if the room were a perfect rectangle), without regard for any cutouts. Accordingly, the area of the actual room will typically be smaller than the product obtained by multiplying the stated length times width. All dimensions are approximate and may vary with actual construction, and all floor plans and development plans are subject to change.

**MARIA LARGO** **PL&E**  
DEVELOPER/BUILDER PROJECTS

2200  
BRICKELL

# TIPO J

UNIDADES 05, 07, 18

3 DORMITORIOS + DEN

3.5 BAÑOS

NIVELES 3 - 5

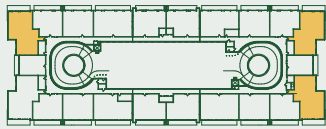
INTERIOR 1,818 SF / 169 M<sup>2</sup>

BALCONY 205 SF / 19 M<sup>2</sup>

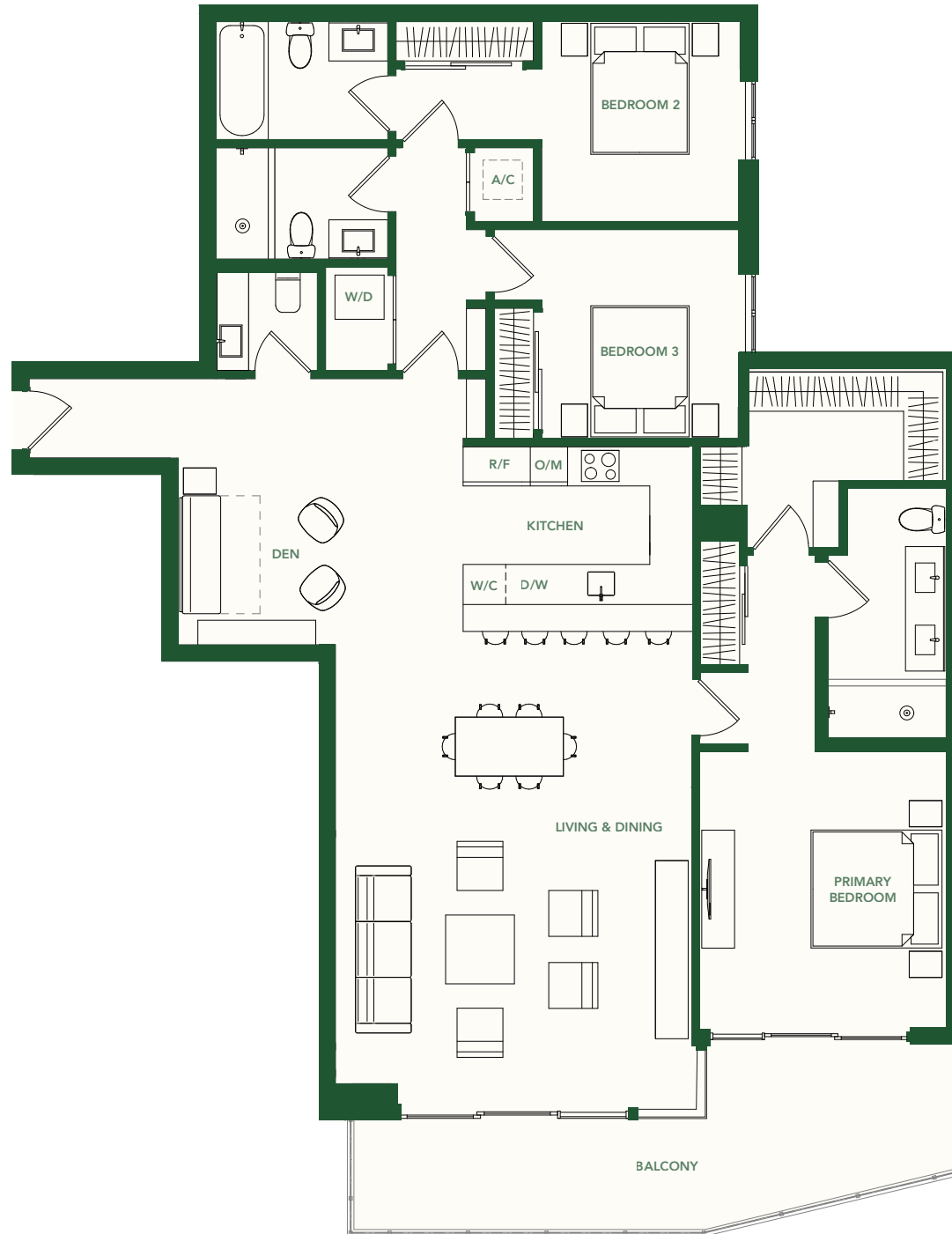
TOTAL 2,023 SF / 188 M<sup>2</sup>

UNIDADES 05, 07 - 1846 SF / 171 M<sup>2</sup>

UNIDADE 18 - 1818 SF / 169 M<sup>2</sup>



BRICKELL AVE.



These drawings are conceptual only and are for the convenience of reference. They should not be relied upon as representations, express or implied, of the final detail of the residences. Units shown are examples of unit types and may not depict actual units. Stated square footages are ranges for a particular unit type and are measured to the exterior boundaries of the exterior walls and the centerline of interior demising walls and in fact vary from the area that would be determined by using the description and definition of the unit set forth in the declaration (which generally only includes the interior airspace between the perimeter walls and excludes interior structural components). Note that measurements of rooms set forth on this floorplan are generally taken at the greatest points of each given room (as if the room were a perfect rectangle), without regards for any cutouts. Accordingly, the area of the actual room will typically be smaller than the product obtained by multiplying the stated length times width. All dimensions are approximate and may vary with actual construction, and all floor plans and development plans are subject to change.

**MARIA LARGO** **PL&E**  
DEVELOPER/BUILDER PRODUCTS

# 2200 BRICKELL

## TIPO H

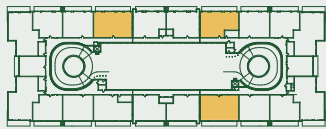
UNIDADES 02, 10, 21

3 DORMITORIOS + DEN

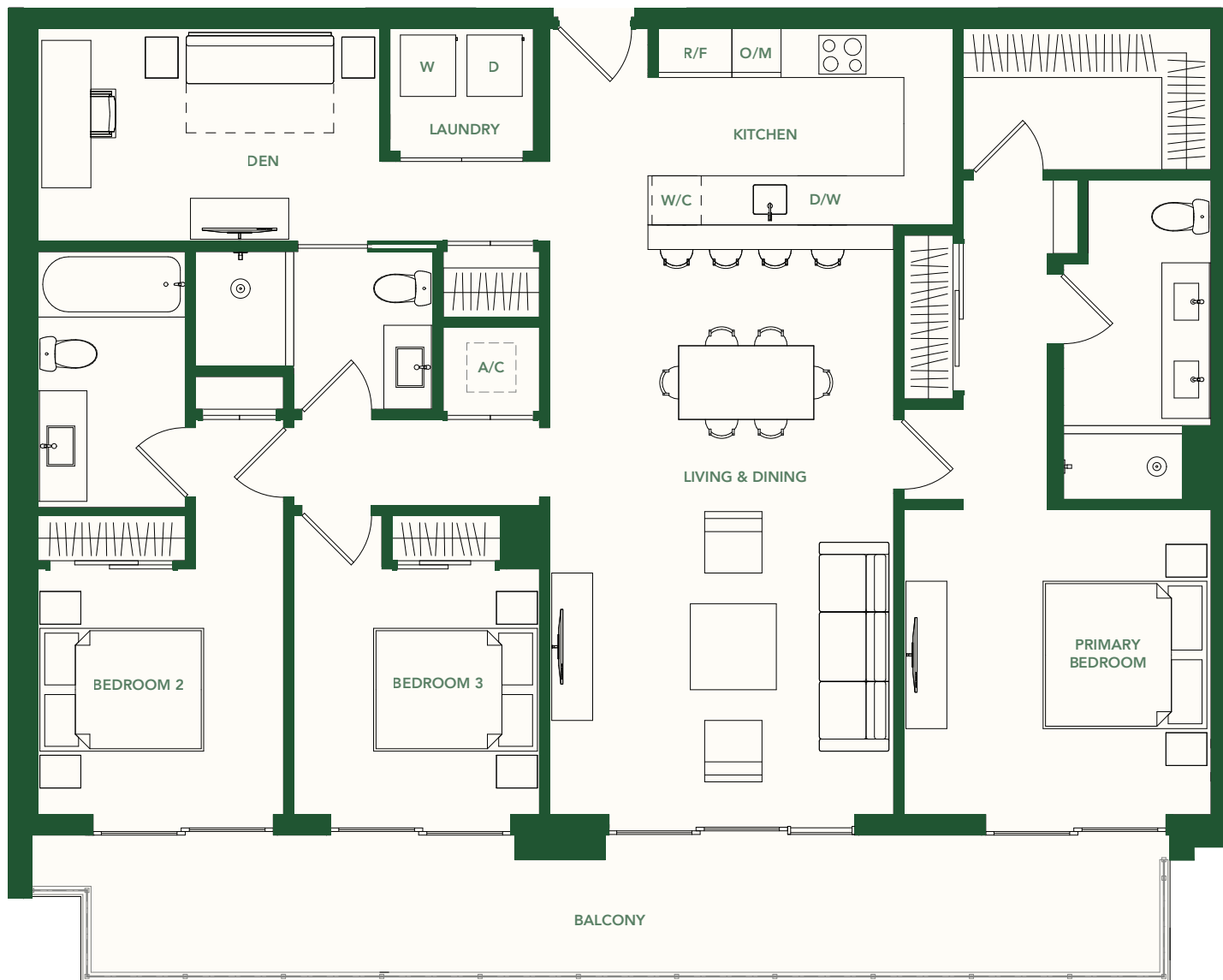
3 BAÑOS

NIVELES 2 - 5

INTERIOR	1,652 SF / 153 M <sup>2</sup>
BALCÓN	259 SF / 24 M <sup>2</sup>
TOTAL	1,911 SF / 177 M <sup>2</sup>



BRICKELL AVE.



These drawings are conceptual only and are for the convenience of reference. They should not be relied upon as representations, express or implied, of the final detail of the residences. Units shown are examples of unit types and may not depict actual units. Stated square footages are ranges for a particular unit type and are measured to the exterior boundaries of the exterior walls and the centerline of interior demising walls and in fact vary from the area that would be determined by using the description and definition of the unit set forth in the declaration (which generally only includes the interior airspace between the perimeter walls and excludes interior structural components). Note that measurements of rooms set forth on this floorplan are generally taken at the greatest points of each given room (as if the room were a perfect rectangle), without regards for any cutouts. Accordingly, the area of the actual room will typically be smaller than the product obtained by multiplying the stated length times width. All dimensions are approximate and may vary with actual construction, and all floor plans and development plans are subject to change.



2200  
BRICKELL

# TIPO F

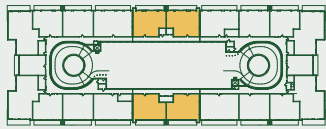
UNIDADES 01, 11, 12, 22

2 DORMITORIOS + DEN

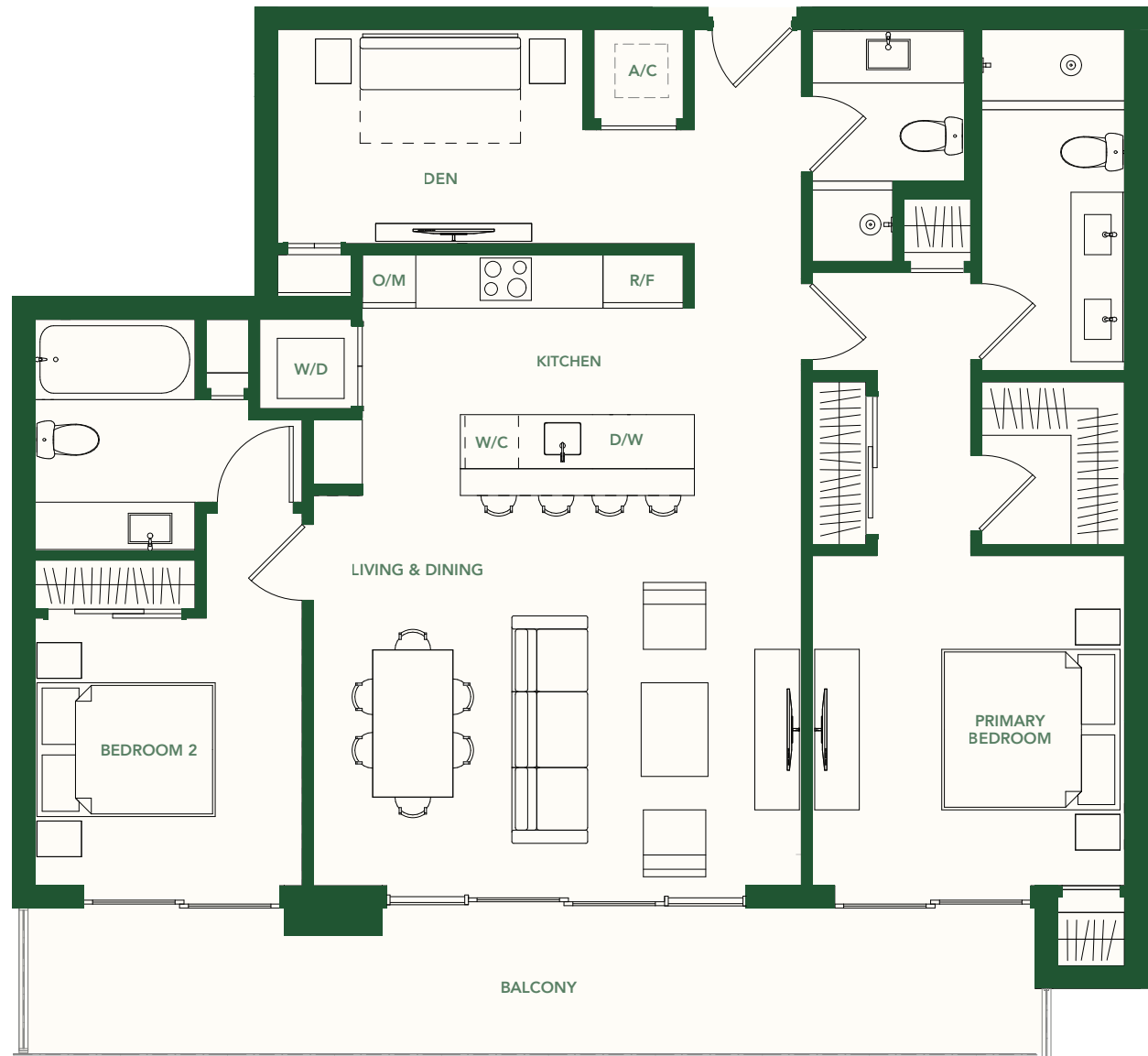
3 BAÑOS

NIVELES 2 - 5

INTERIOR	1,317 SF / 122 M <sup>2</sup>
BALCÓN	210 SF / 20 M <sup>2</sup>
TOTAL	1,527 SF / 142 M <sup>2</sup>



BRICKELL AVE.



These drawings are conceptual only and are for the convenience of reference. They should not be relied upon as representations, express or implied, of the final detail of the residences. Units shown are examples of unit types and may not depict actual units. Stated square footages are ranges for a particular unit type and are measured to the exterior boundaries of the exterior walls and the centerline of interior demising walls and in fact vary from the area that would be determined by using the description and definition of the unit set forth in the declaration (which generally only includes the interior airspace between the perimeter walls and excludes interior structural components). Note that measurements of rooms set forth on this floorplan are generally taken at the greatest points of each given room (as if the room were a perfect rectangle), without regard for any cutouts. Accordingly, the area of the actual room will typically be smaller than the product obtained by multiplying the stated length times width. All dimensions are approximate and may vary with actual construction, and all floor plans and development plans are subject to change.

**MARIA LARGO** **PL&E**  
DEVELOPER/BUILDER PRODUCTS

# 2200 BRICKELL

## TIPO E

UNIDADES 03, 09, 14, 20

2 DORMITORIOS + DEN

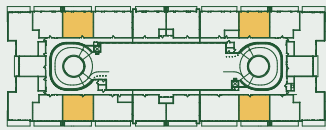
2 BAÑOS

NIVELES 2 - 5

INTERIOR 1,302 SF / 121 M<sup>2</sup>

BALCÓN 213 SF / 20 M<sup>2</sup>

TOTAL 1,515 SF / 141 M<sup>2</sup>



BRICKELL AVE.



These drawings are conceptual only and are for the convenience of reference. They should not be relied upon as representations, express or implied, of the final detail of the residences. Units shown are examples of unit types and may not depict actual units. Stated square footages are ranges for a particular unit type and are measured to the exterior boundaries of the exterior walls and the centerline of interior demising walls and in fact vary from the area that would be determined by using the description and definition of the unit set forth in the declaration (which generally only includes the interior airspace between the perimeter walls and excludes interior structural components). Note that measurements of rooms set forth on this floorplan are generally taken at the greatest points of each given room (as if the room were a perfect rectangle), without regards for any cutouts. Accordingly, the area of the actual room will typically be smaller than the product obtained by multiplying the stated length times width. All dimensions are approximate and may vary with actual construction, and all floor plans and development plans are subject to change.

**MARIA LARGO** **PL&E**  
DEVELOPER/BUILDER PROJECTS

# 2200 BRICKELL

## TIPO G

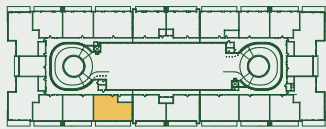
UNIDADES 13

3 DORMITORIOS

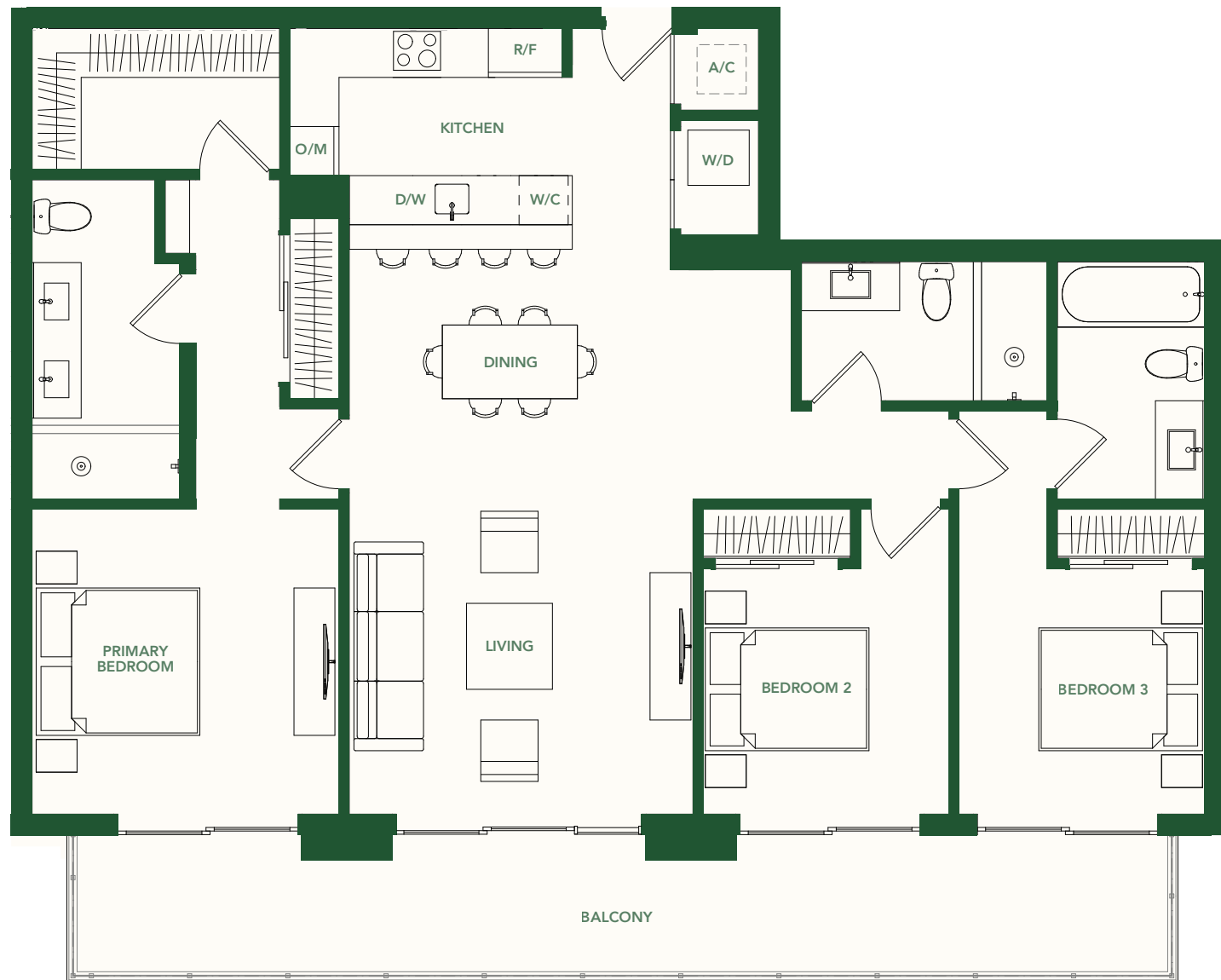
3 BAÑOS

NIVELES 2 - 5

INTERIOR	1,470 SF / 137 M <sup>2</sup>
BALCÓN	256 SF / 24 M <sup>2</sup>
TOTAL	1,726 SF / 161 M <sup>2</sup>



BRICKELL AVE.



These drawings are conceptual only and are for the convenience of reference. They should not be relied upon as representations, express or implied, of the final detail of the residences. Units shown are examples of unit types and may not depict actual units. Stated square footages are ranges for a particular unit type and are measured to the exterior boundaries of the exterior walls and the centerline of interior demising walls and in fact vary from the area that would be determined by using the description and definition of the unit set forth in the declaration (which generally only includes the interior airspace between the perimeter walls and excludes interior structural components). Note that measurements of rooms set forth on this floorplan are generally taken at the greatest points of each given room (as if the room were a perfect rectangle), without regards for any cutouts. Accordingly, the area of the actual room will typically be smaller than the product obtained by multiplying the stated length times width. All dimensions are approximate and may vary with actual construction, and all floor plans and development plans are subject to change.

**MARIA LARGO** **PL&E**  
DEVELOPER/BUILDER PROJECTS

# 2200 BRICKELL

## TIPO C

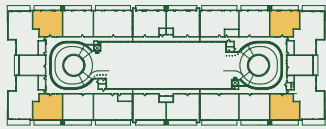
UNIDADES 04, 08, 15, 19

2 DORMITORIOS

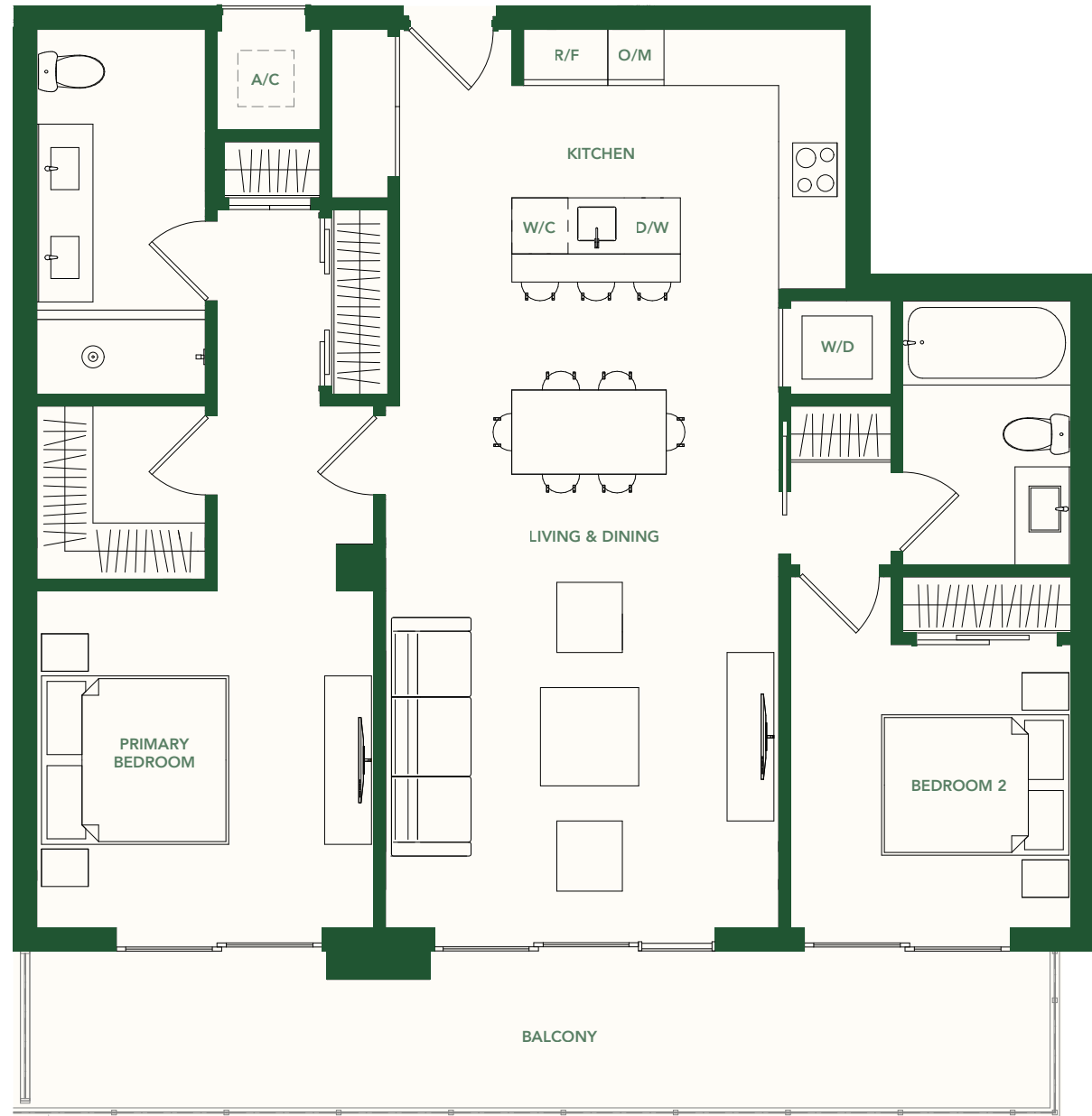
2 BAÑOS

NIVELES 2 - 5

INTERIOR	1,189 SF / 110 M <sup>2</sup>
BALCÓN	215 SF / 20 M <sup>2</sup>
TOTAL	1,404 SF / 130 M <sup>2</sup>



BRICKELL AVE.



These drawings are conceptual only and are for the convenience of reference. They should not be relied upon as representations, express or implied, of the final detail of the residences. Units shown are examples of unit types and may not depict actual units. Stated square footages are ranges for a particular unit type and are measured to the exterior boundaries of the exterior walls and the centerline of interior demising walls and in fact vary from the area that would be determined by using the description and definition of the unit set forth in the declaration (which generally only includes the interior airspace between the perimeter walls and excludes interior structural components). Note that measurements of rooms set forth on this floorplan are generally taken at the greatest points of each given room (as if the room were a perfect rectangle), without regard for any cutouts. Accordingly, the area of the actual room will typically be smaller than the product obtained by multiplying the stated length times width. All dimensions are approximate and may vary with actual construction, and all floor plans and development plans are subject to change.

## TIPO A

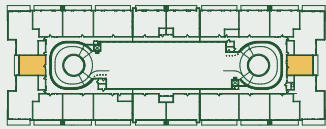
UNIDADES 06, 17

1 DORMITORIO + DEN

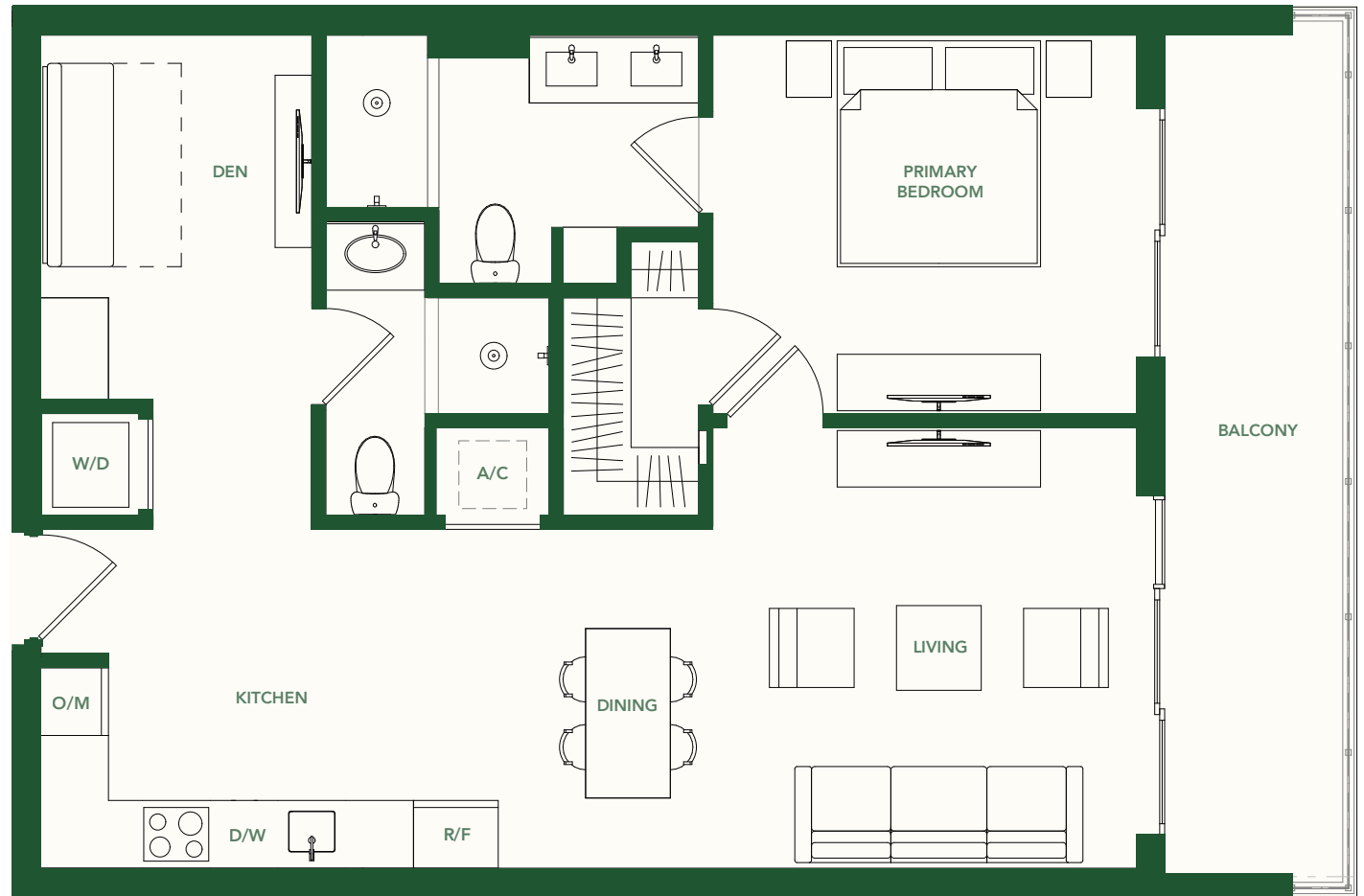
2 BAÑOS

NIVELES 2 - 5

<b>INTERIOR</b>	864 SF / 80 M <sup>2</sup>
<b>BALCÓN</b>	124 SF / 12 M <sup>2</sup>
<b>TOTAL</b>	988 SF / 92 M <sup>2</sup>



BRICKELL AVE.



These drawings are conceptual only and are for the convenience of reference. They should not be relied upon as representations, express or implied, of the final detail of the residences. Units shown are examples of unit types and may not depict actual units. Stated square footages are ranges for a particular unit type and are measured to the exterior boundaries of the exterior walls and the centerline of interior demising walls and in fact vary from the area that would be determined by using the description and definition of the unit set forth in the declaration (which generally only includes the interior airspace between the perimeter walls and excludes interior structural components). Note that measurements of rooms set forth on this floorplan are generally taken at the greatest points of each given room (as if the room were a perfect rectangle), without regards for any cutouts. Accordingly, the area of the actual room will typically be smaller than the product obtained by multiplying the stated length times width. All dimensions are approximate and may vary with actual construction, and all floor plans and development plans are subject to change.