

K O Y A B A Y

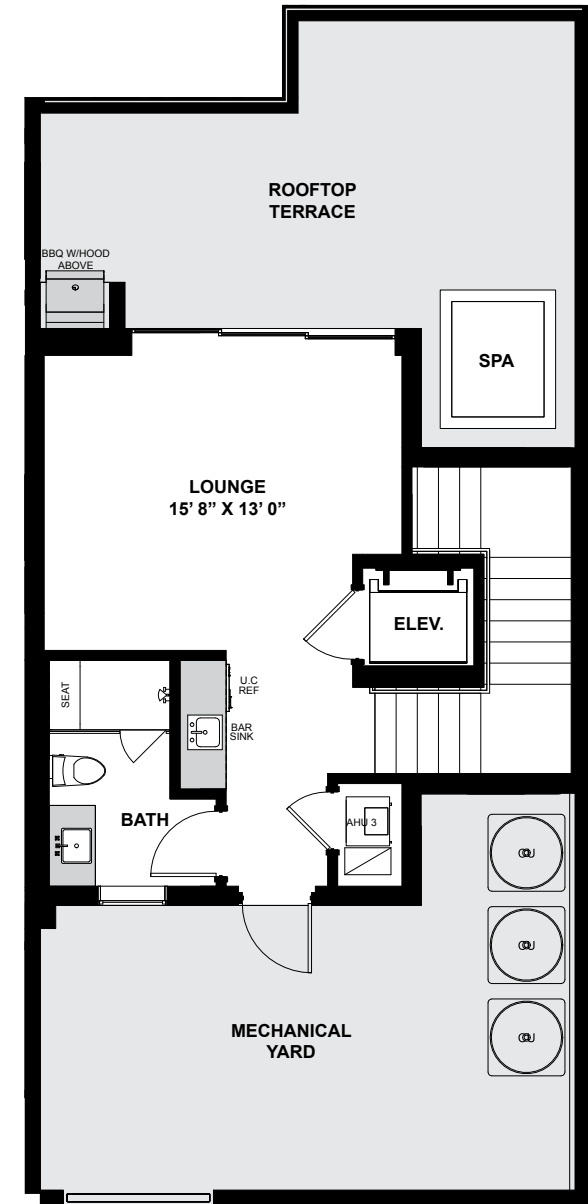
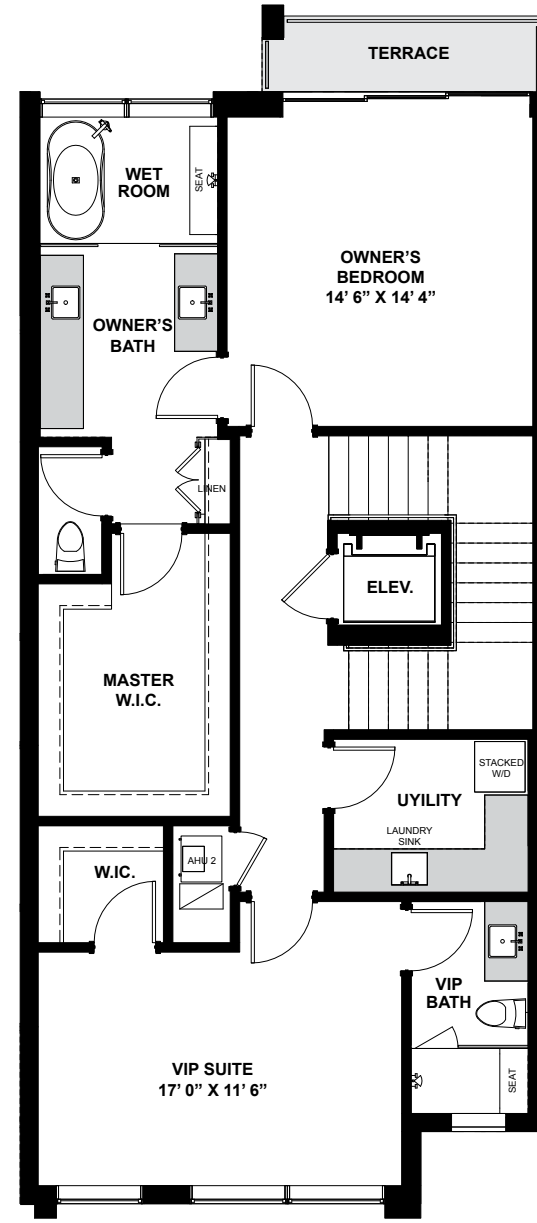
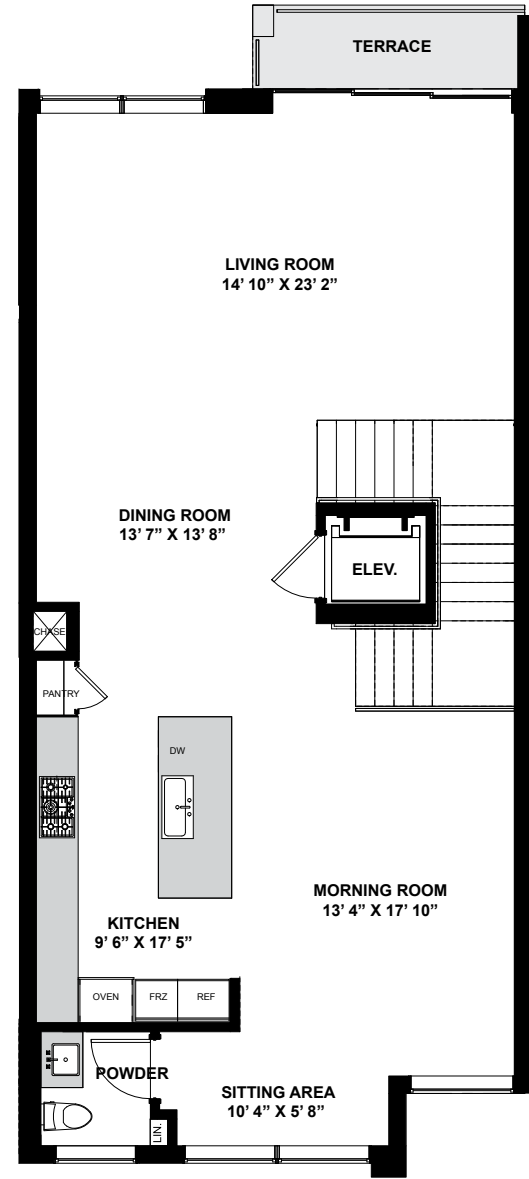
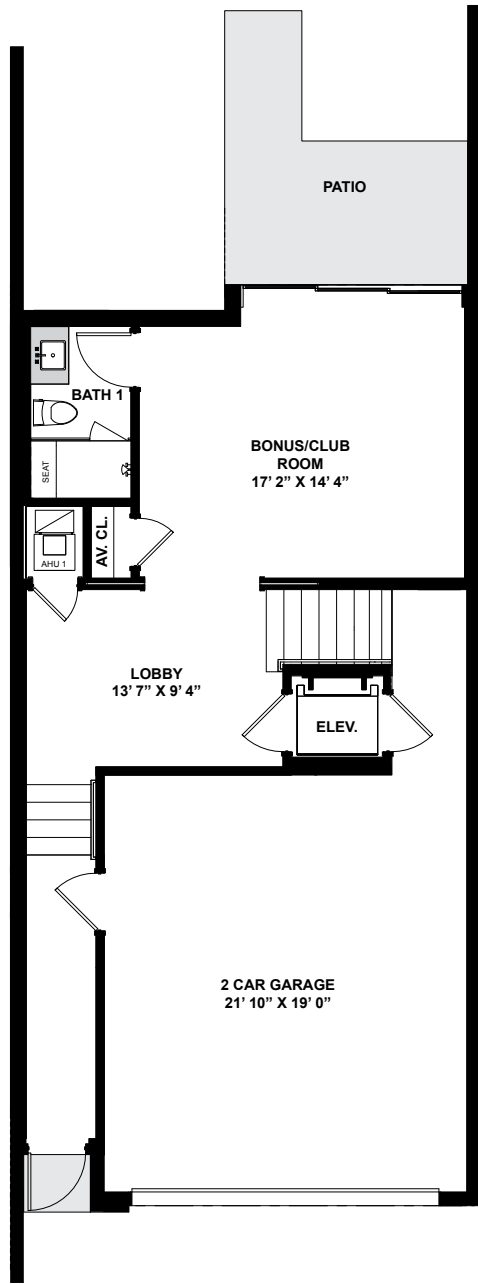


≡ L ≡ V A T ≡ D L I V I N G





A N E W L E V E L O F L U X U R Y

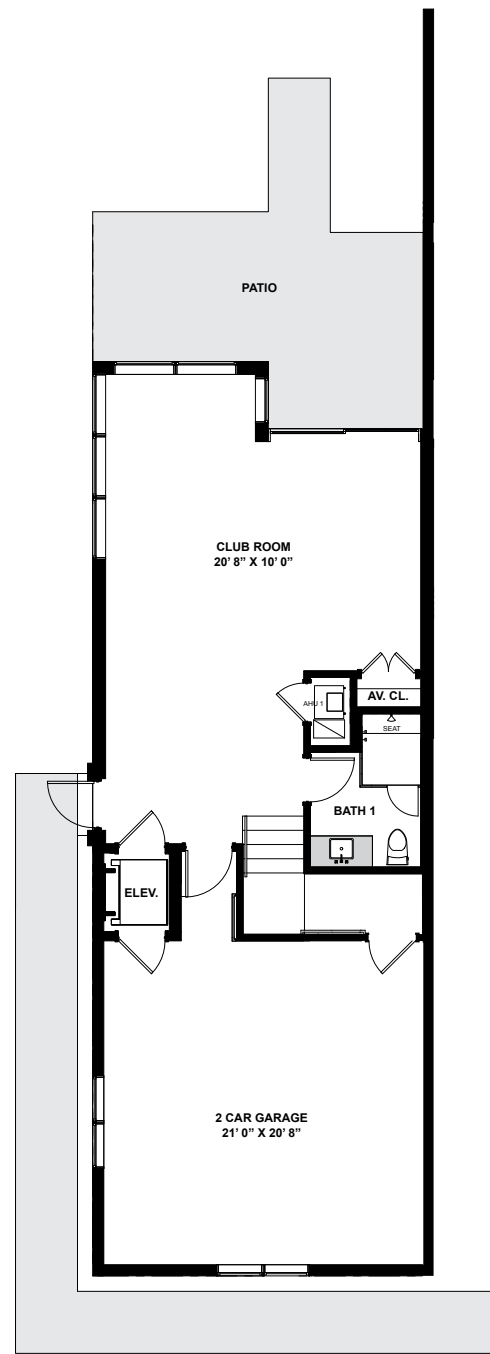


INTRA COASTAL

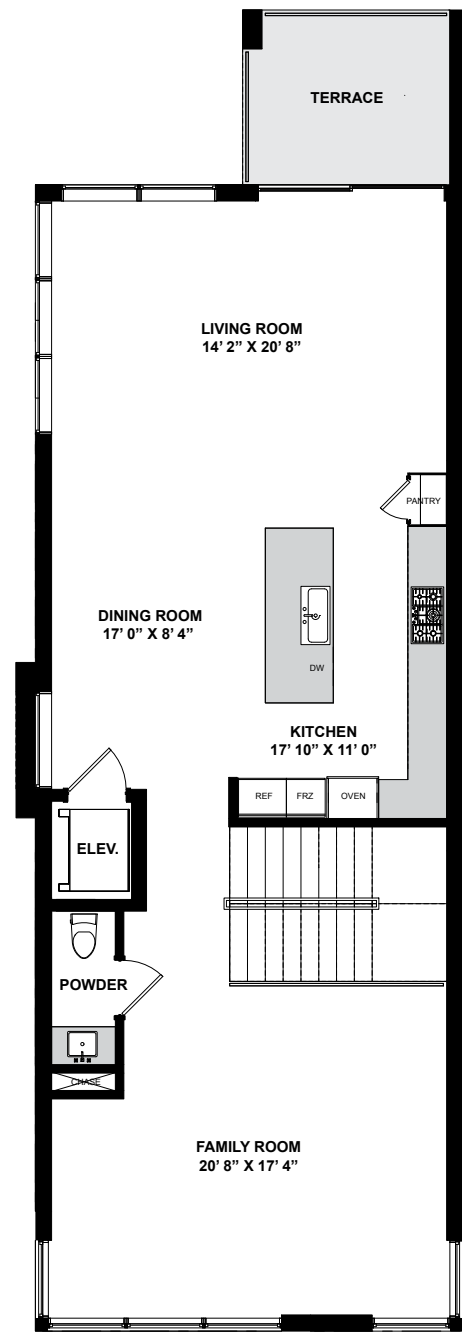
THE AURA

4 BEDROOMS | 4.5 BATHROOMS | OPTIONAL FLEX ROOM | 4,627 TOTAL SQ. FT.

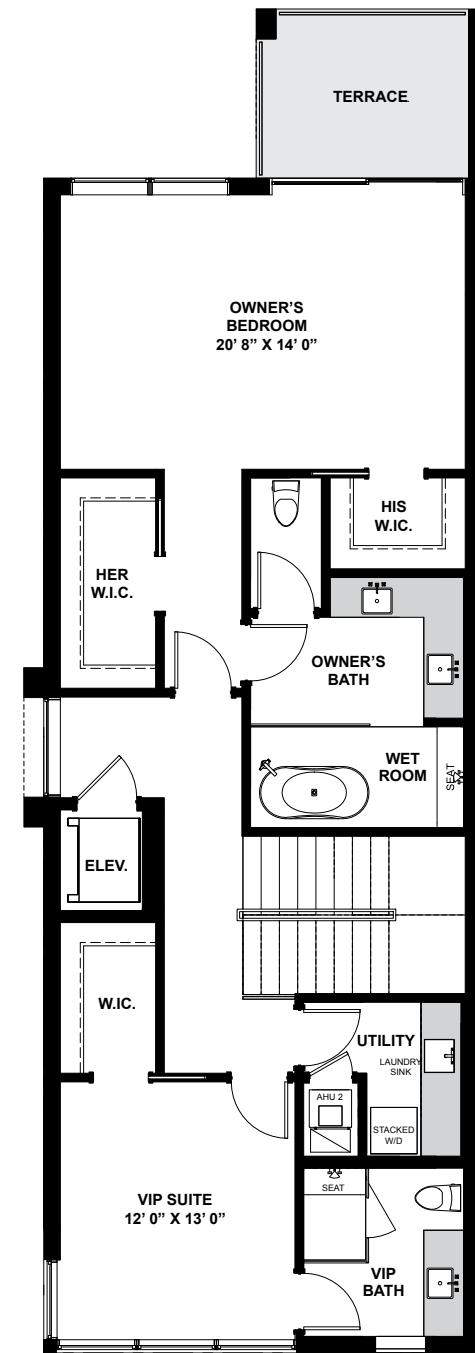




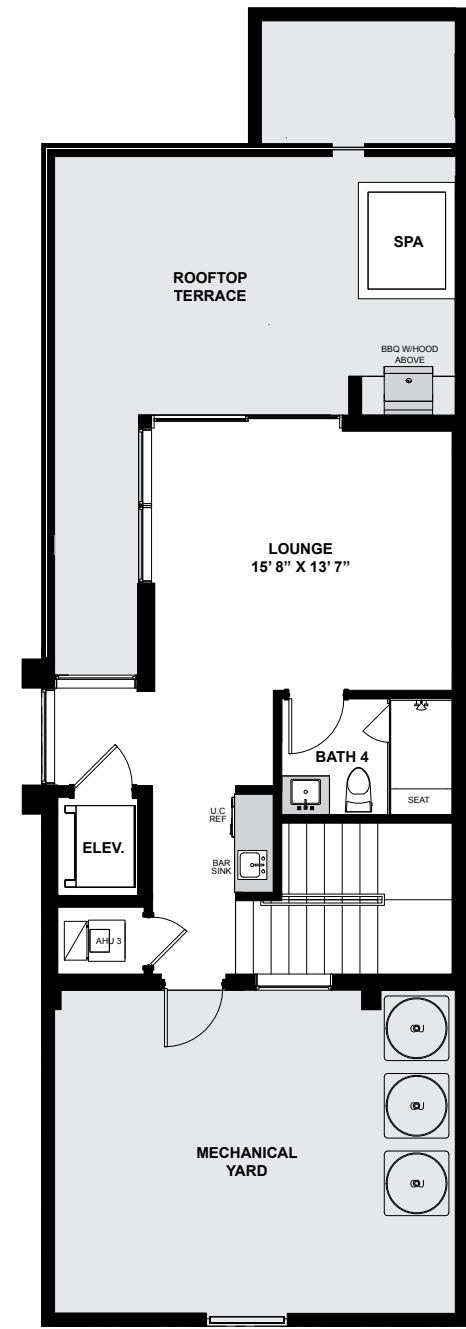
LEVEL ONE



LEVEL TWO



LEVEL THREE



LEVEL FOUR

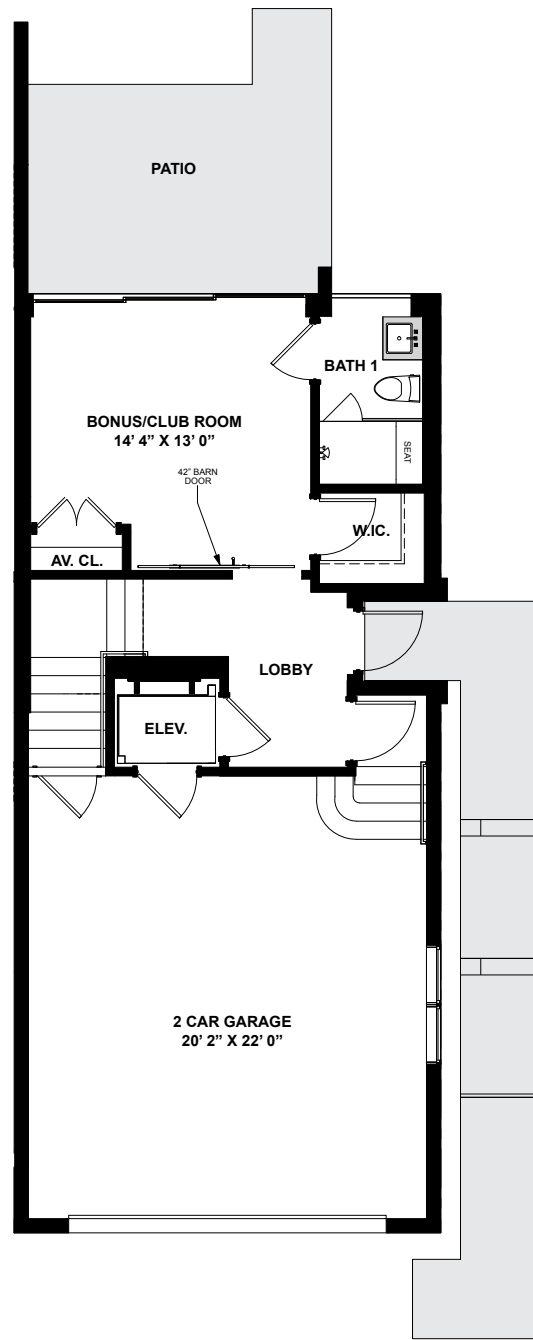


INTRA COASTAL

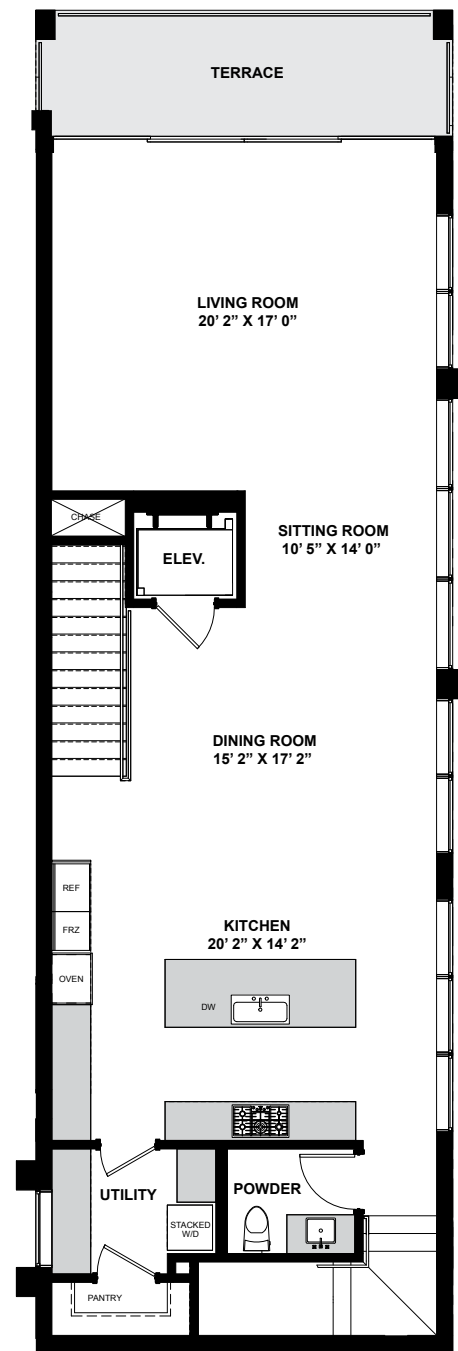
THE BALI

4 BEDROOMS | 4.5 BATHROOMS | OPTIONAL FLEX ROOM | 5,133 TOTAL SQ. FT.

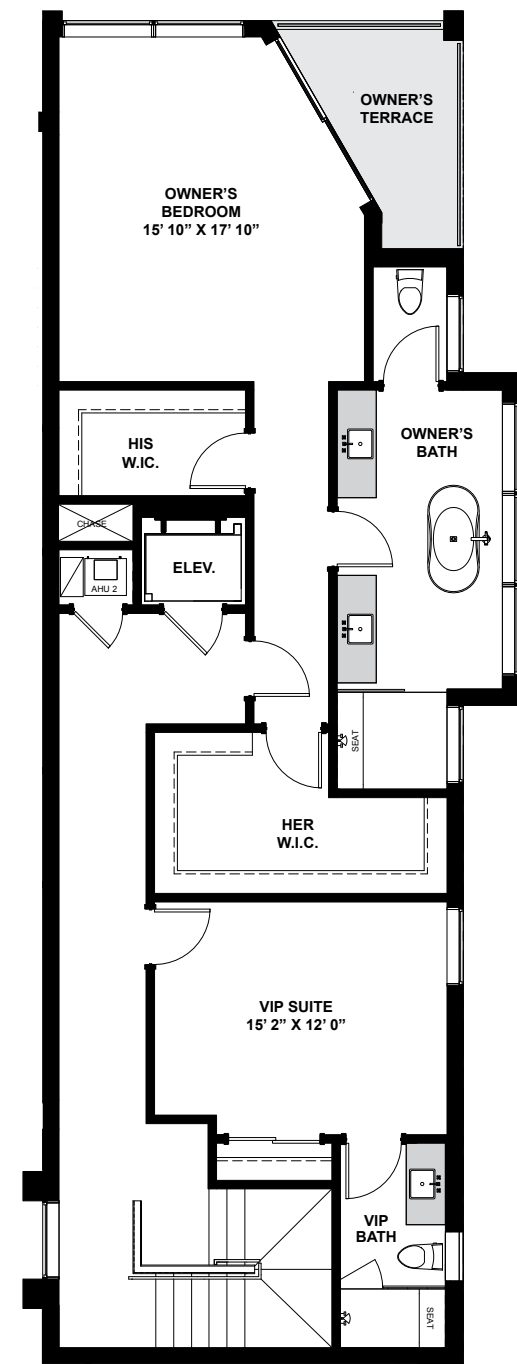




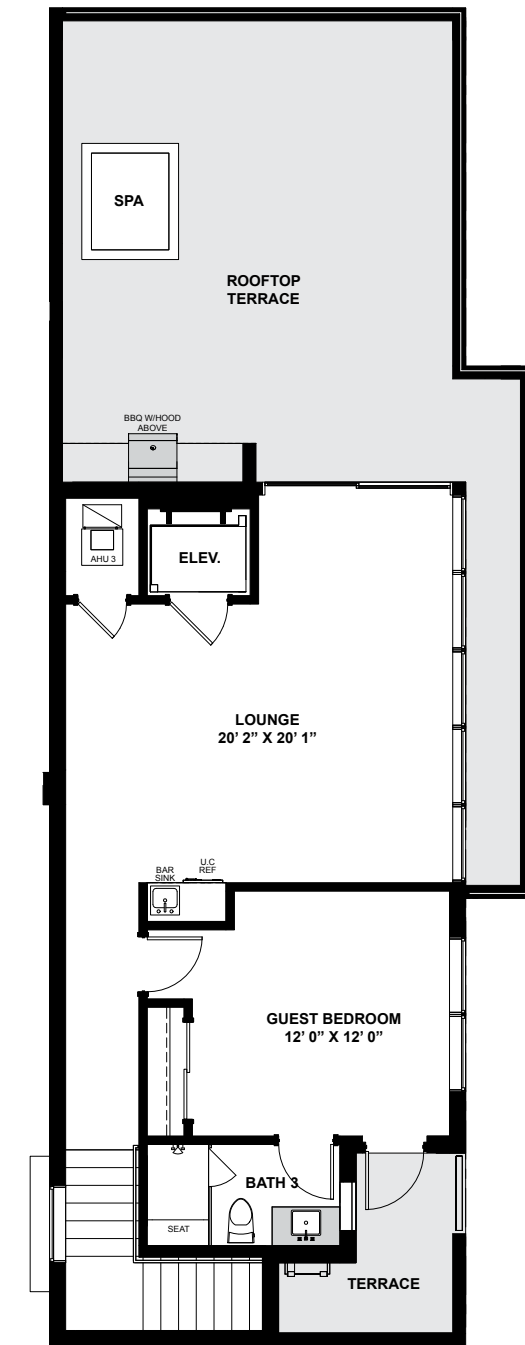
LEVEL ONE



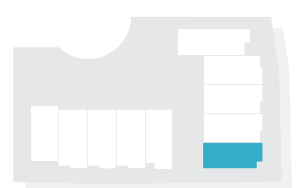
LEVEL TWO



LEVEL THREE



LEVEL FOUR



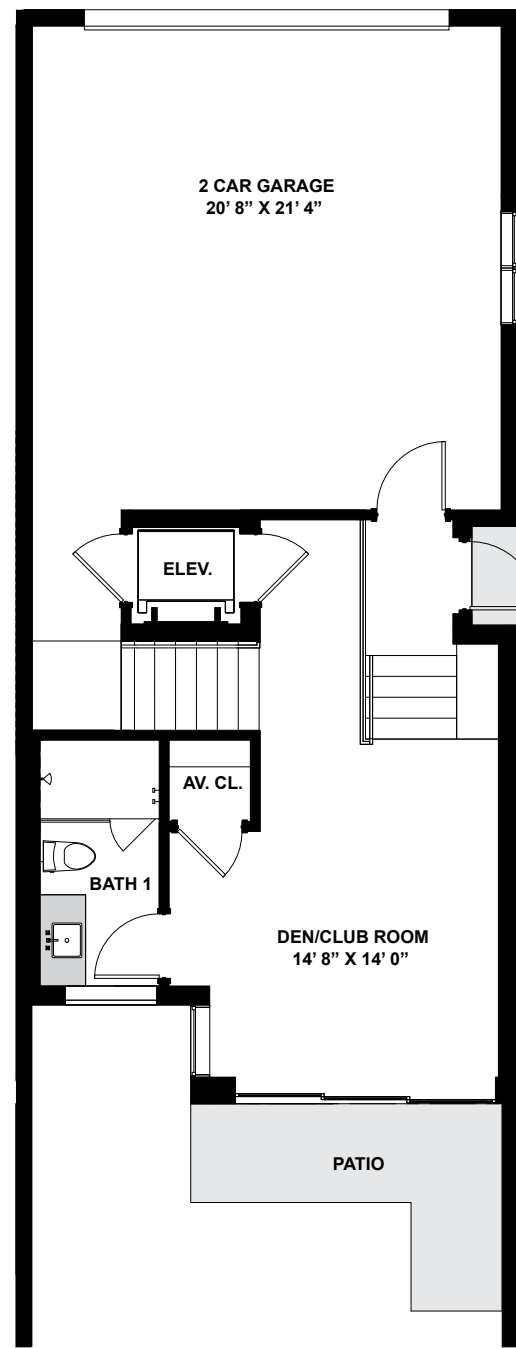
WATERWAY

INTRACOASTAL

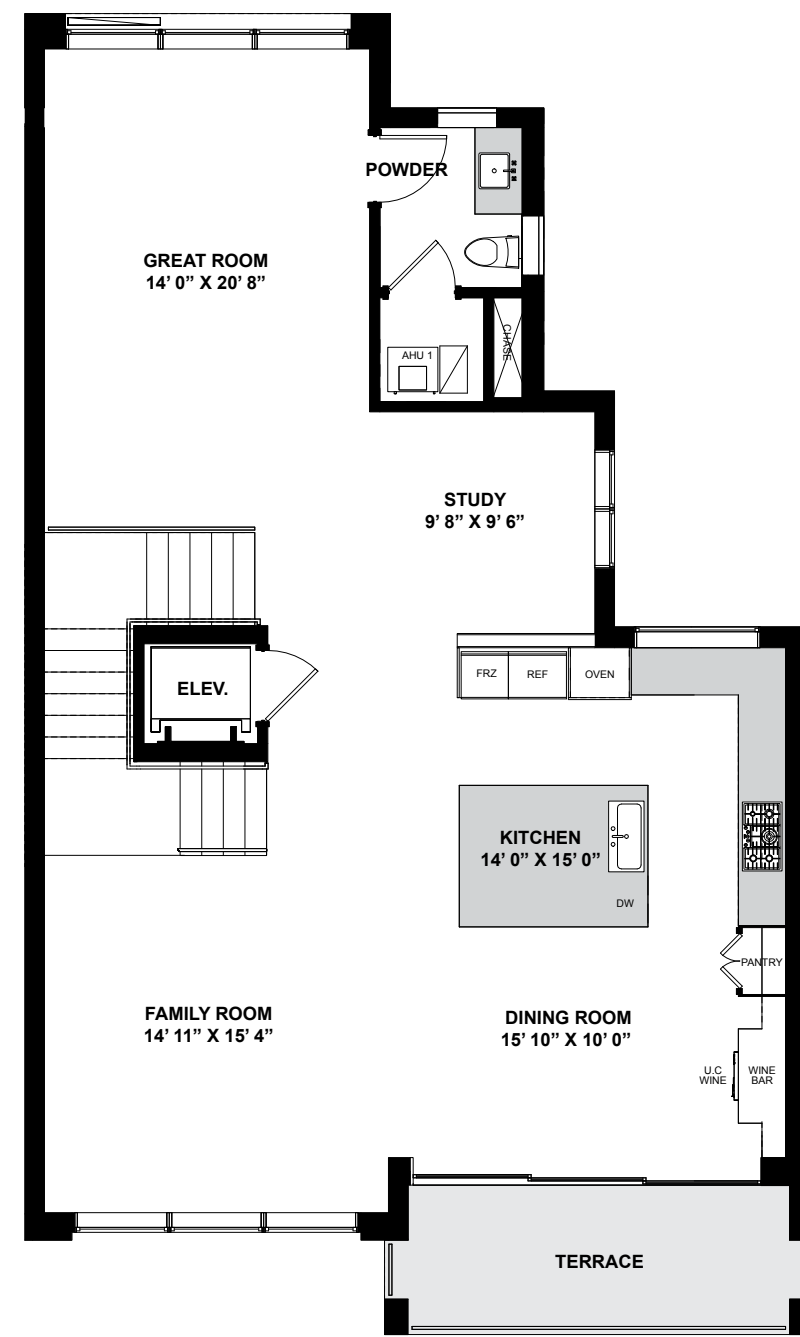
THE CYPRESS

5 BEDROOMS | 5.5 BATHROOMS | OPTIONAL FLEX ROOM | 5,288 TOTAL SQ. FT.

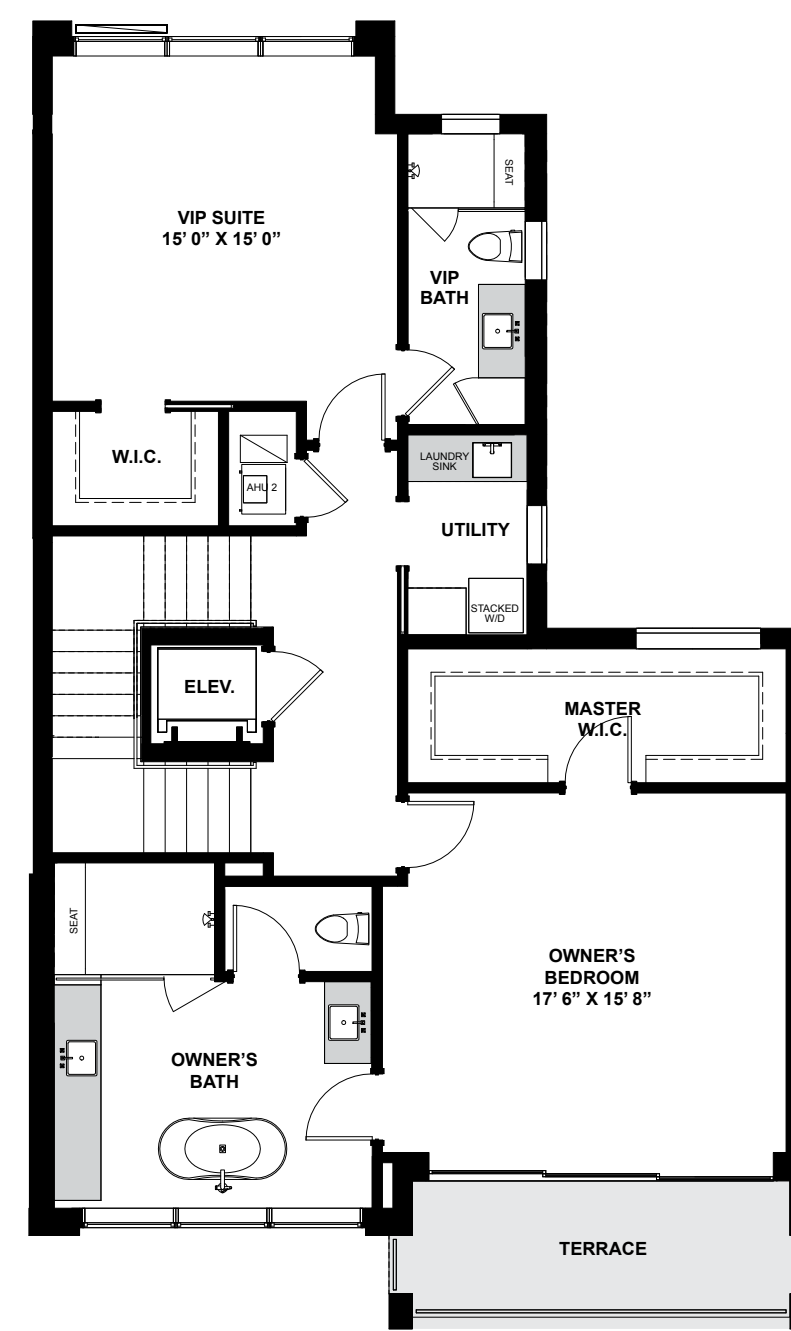




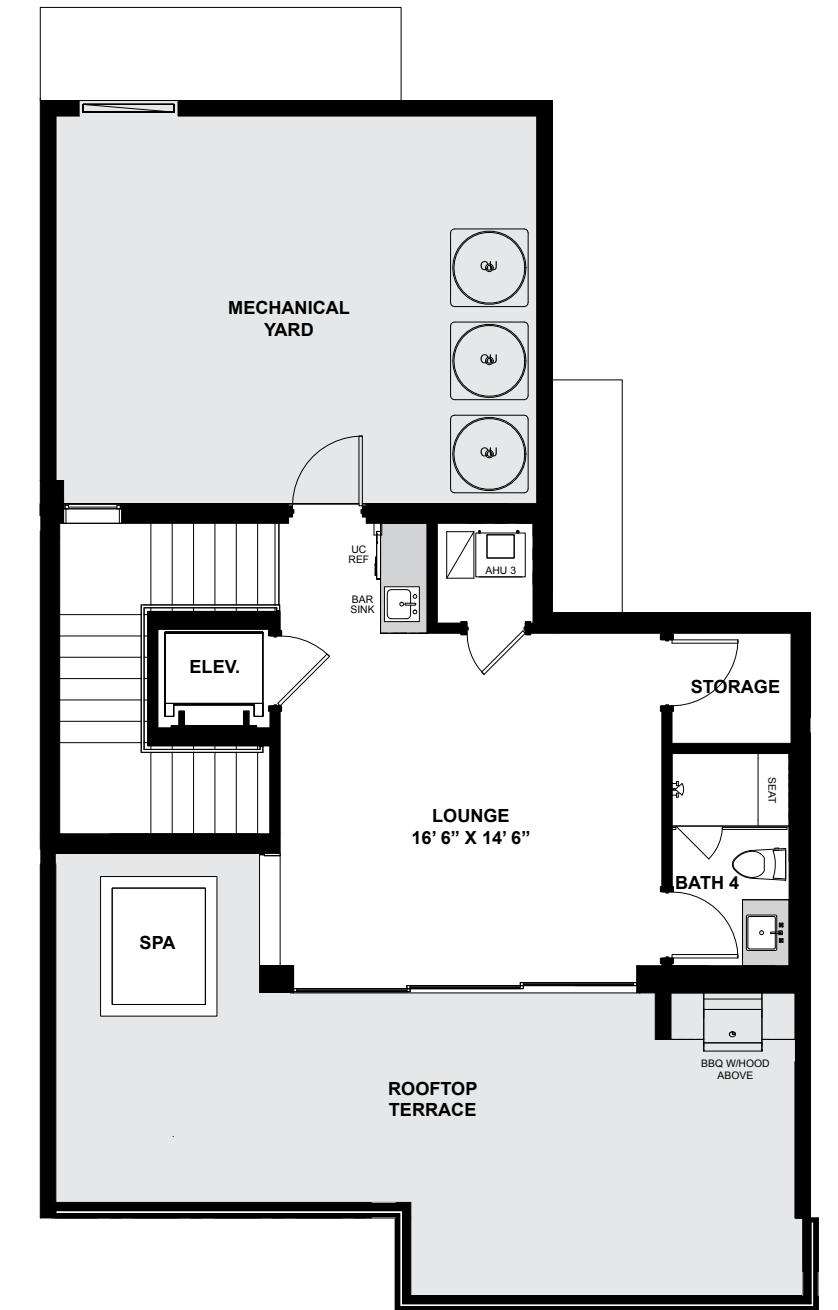
LEVEL ONE



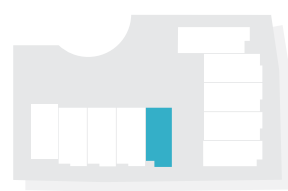
LEVEL TWO



LEVEL THREE



LEVEL FOUR



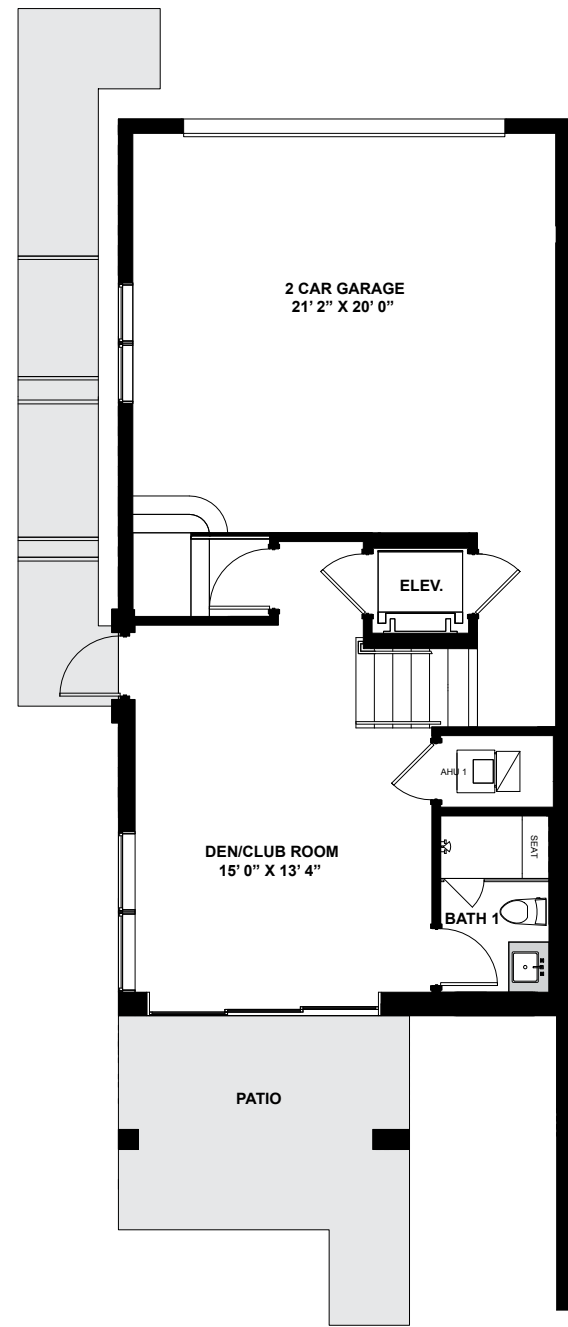
WATERWAY

INTRACOASTAL

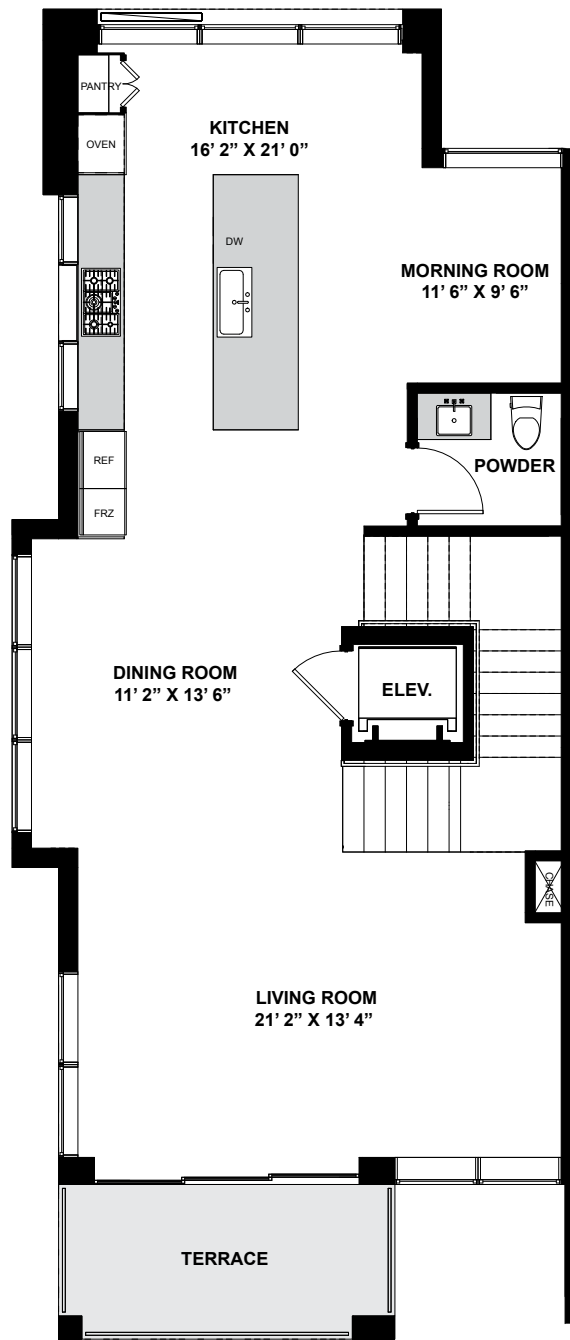
THE DAHLIA

4 BEDROOMS | 4.5 BATHROOMS | FLEX ROOM | STUDY | 5,078 TOTAL SQ. FT.

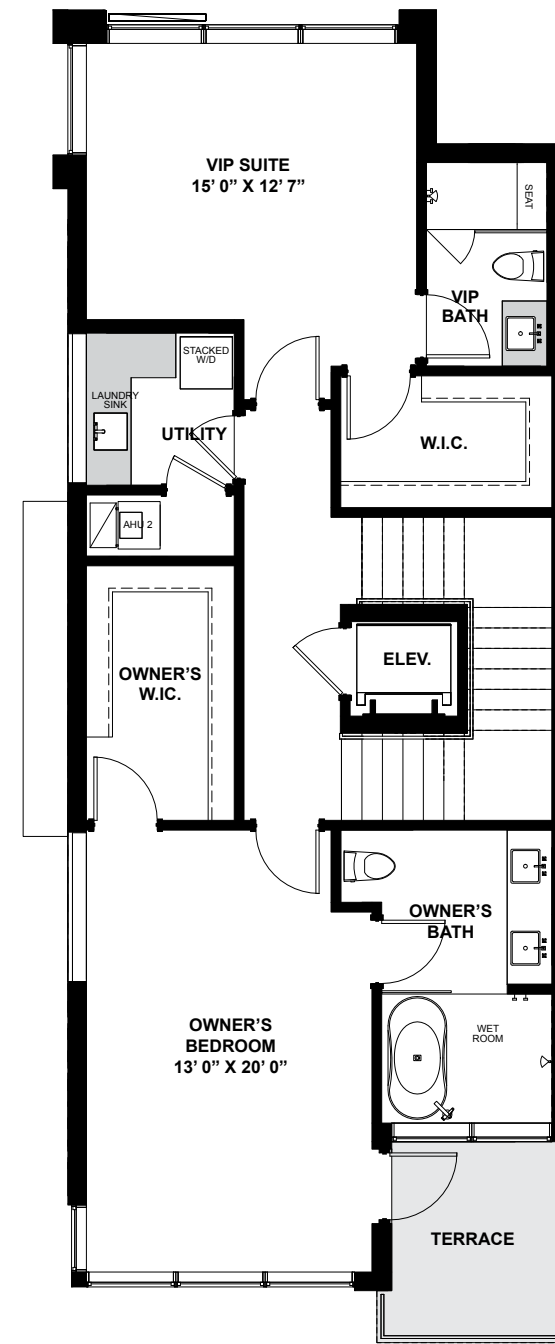




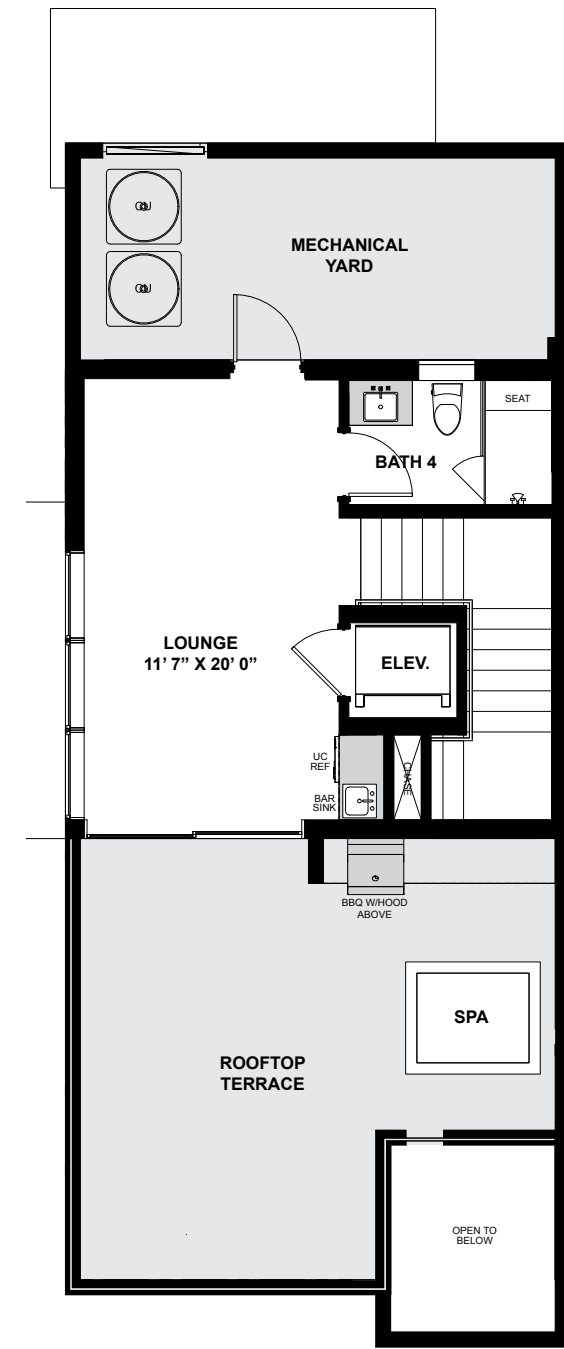
LEVEL ONE



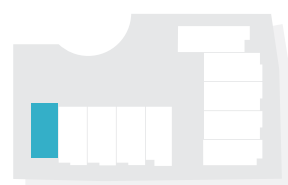
LEVEL TWO



LEVEL THREE



LEVEL FOUR

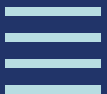


INTRACOASTAL

WATERWAY

THE EDEN

4 BEDROOMS | 4.5 BATHROOMS | FLEX ROOM | 4,327 TOTAL SQ. FT.





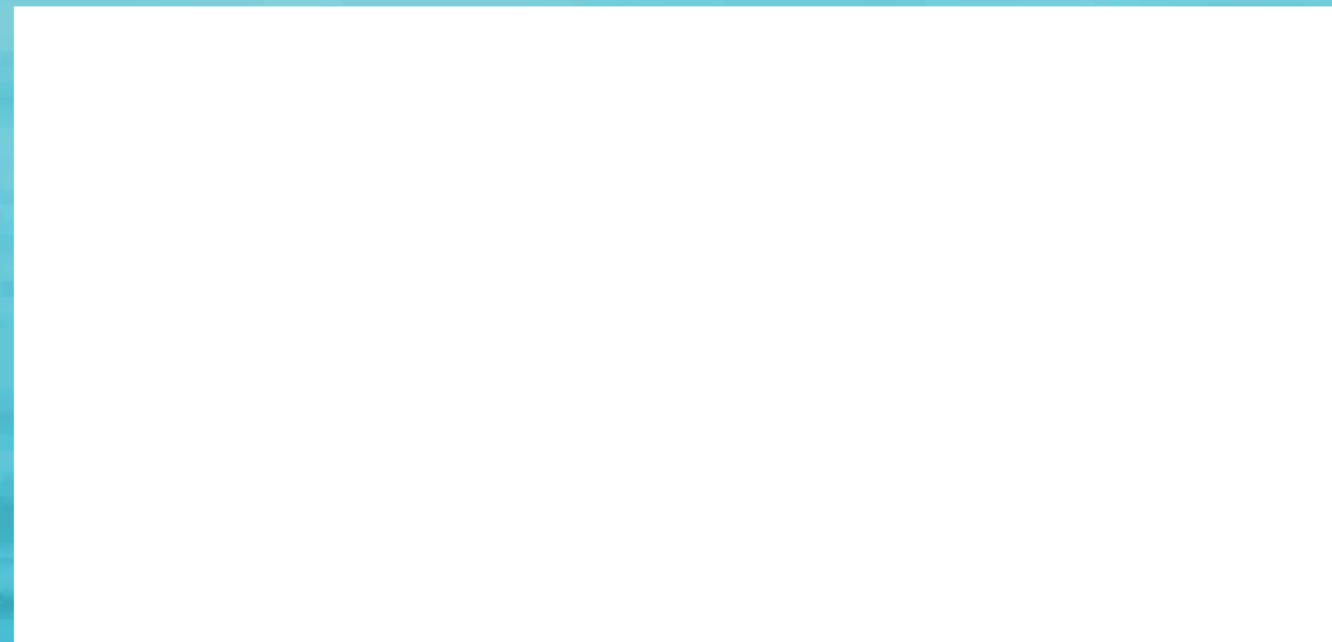
- 4,327 to 5,288 SF of elegantly modern space with soaring ceilings.
- Thoughtfully designed 3 to 5 bedroom townhome floor plans.
- Two-car garages with optional car lift.
- Private elevator.
- Expansive rooftop terrace with outdoor jacuzzi and summer kitchen.
- Waterfront balconies on every level.
- Enclosed air-conditioned rooftop lounge, customizable to fit your lifestyle by transforming the space into a gym, office, guest room, or gentleman's room.
- Smart home technology with low-voltage wiring system.
- Top-of-the-line professional Wolf appliances.
- Custom wood cabinetry and handcrafted solid-core interior doors.
- Floor-to-ceiling impact glass doors and impact windows.
- A private boat slip, with water and electricity hookups included at each slip.
- Minutes from Haulover Inlet.
- Direct ocean access.
- Access to a state-of-the-art Boat Club, which offers an exciting array of watercraft rentals, from paddleboards to jet-skis and diverse outboard vessels, all of which can be delivered to your private dock.
- Easy access to Oleta River State Park, featuring 1,000+ acres of mountain bike trails, running paths, kayaking, fishing, and waterfront summer kitchen pavilions.
- Direct and unobstructed views of Intracoastal Waterway.
- Police guard-gated community access with 24/7 manned security.

Aforementioned amenities are subject to availability



You Belong at Koya Bay.

CONTACT US TODAY FOR MORE DETAILS



Koya Bay is developed by Macken Companies. Floor plans and renderings are not to scale and are for illustrative purposes only. Terms, plans, specifications, features, designs, dimensions, material availability and materials are subject to change or substitution of equal quality without notice, at the sole discretion of Macken Companies. Photography includes stock images and is used to depict the spirit of lifestyle and not for specific references. See a Macken Companies representative for further information. 11/20

DEVELOPED BY
macken
COMPANIES

EXCLUSIVE SALES & MARKETING BY
m | MACKEN
REALTY

CONSTRUCTED BY
VCM
BUILDERS, INC.





K O Y A B A Y

E L E V A T E D L I V I N G