

**UNIT 301 & 401 | MODEL A**

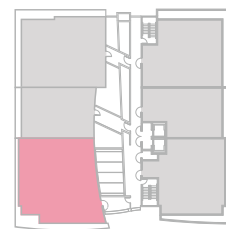
3 Bedrooms | 3.5 Baths

+ Den (Convertible)

Living Area 2,254 SF | 209 m<sup>2</sup>

Terrace 353 SF | 33 m<sup>2</sup>

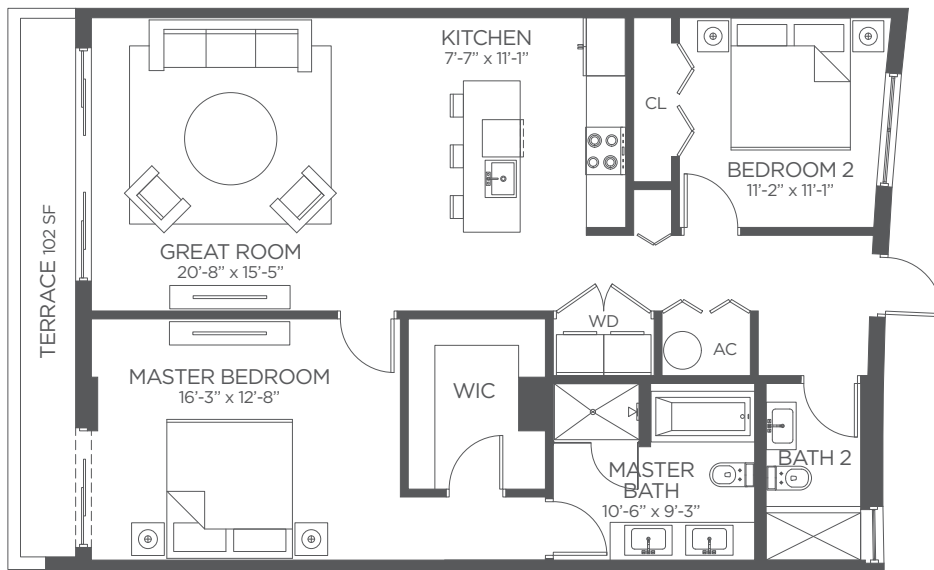
**Total Area 2,607 SF | 242 m<sup>2</sup>**



92ND STREET



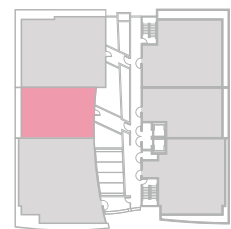
This offering is subject to errors, omissions, prior sale, change of price, or withdrawal without notice, and not intended to solicit currently listed property. This is not an offer to sell or solicitation of offers to buy condominium units in states where such offer or solicitation cannot be made. Prices, plans, and specifications are subject to change without notice. Void in states where prohibited. Additional restrictions may apply. Artist's conceptual renderings. ORAL REPRESENTATION CANNOT BE RELIED UPON AS CORRECTLY STATING THE REPRESENTATIONS OF THE DEVELOPER. FOR CORRECT REPRESENTATIONS, MAKE REFERENCE TO THE DOCUMENTS REQUIRED BY SECTION 718.503, FLORIDA STATUTES, TO BE FURNISHED BY A DEVELOPER TO A BUYER OR LESSEE. Plans, materials and specifications are subject to architectural and other revisions at the sole discretion of the developer, builder or architect, or as may be required by law. Floor plans shown are not to any particular scale. All dimensions are measured to the exterior boundaries of the exterior walls, corridor walls and to the centerline of interior demising walls and may vary from the description and definition of the "unit" set forth in the declaration. All dimensions are approximate, and all floor plans and development plans are subject to change.



**UNIT 302 & 402 | MODEL B**

2 Bedrooms | 2 Baths

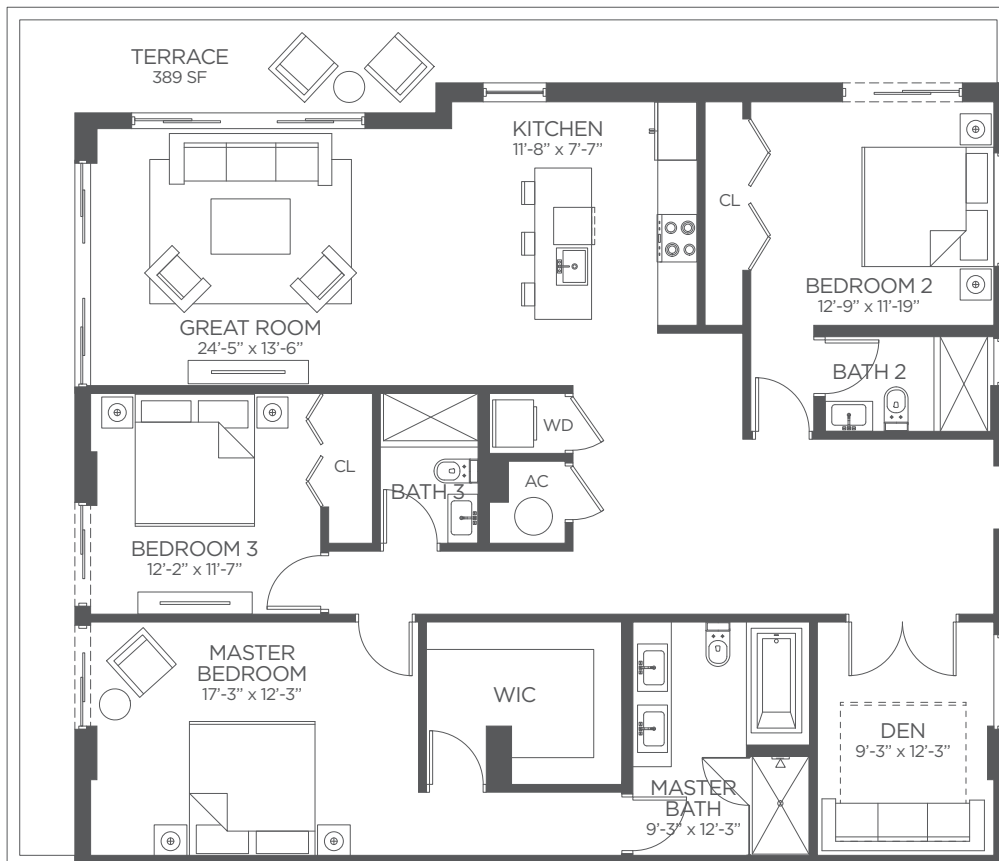
Living Area	1,263 SF   117m <sup>2</sup>
Terrace	102 SF   9m <sup>2</sup>
<b>Total Area</b>	<b>1,365 SF   127m<sup>2</sup></b>



92ND STREET



This offering is subject to errors, omissions, prior sale, change of price, or withdrawal without notice, and not intended to solicit currently listed property. This is not an offer to sell or solicitation of offers to buy condominium units in states where such offer or solicitation cannot be made. Prices, plans, and specifications are subject to change without notice. Void in states where prohibited. Additional restrictions may apply. Artist's conceptual renderings. ORAL REPRESENTATION CANNOT BE RELIED UPON AS CORRECTLY STATING THE REPRESENTATIONS OF THE DEVELOPER. FOR CORRECT REPRESENTATIONS, MAKE REFERENCE TO THE DOCUMENTS REQUIRED BY SECTION 718.503, FLORIDA STATUTES, TO BE FURNISHED BY A DEVELOPER TO A BUYER OR LESSEE. Plans, materials and specifications are subject to architectural and other revisions at the sole discretion of the developer, builder or architect, or as may be required by law. Floor plans shown are not to any particular scale. All dimensions are measured to the exterior boundaries of the exterior walls, corridor walls and to the centerline of interior demising walls and may vary from the description and definition of the "unit" set forth in the declaration. All dimensions are approximate, and all floor plans and development plans are subject to change.



**UNIT 303 & 403 | MODEL C**

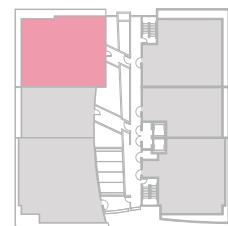
3 Bedrooms | 3 Baths

+ Den

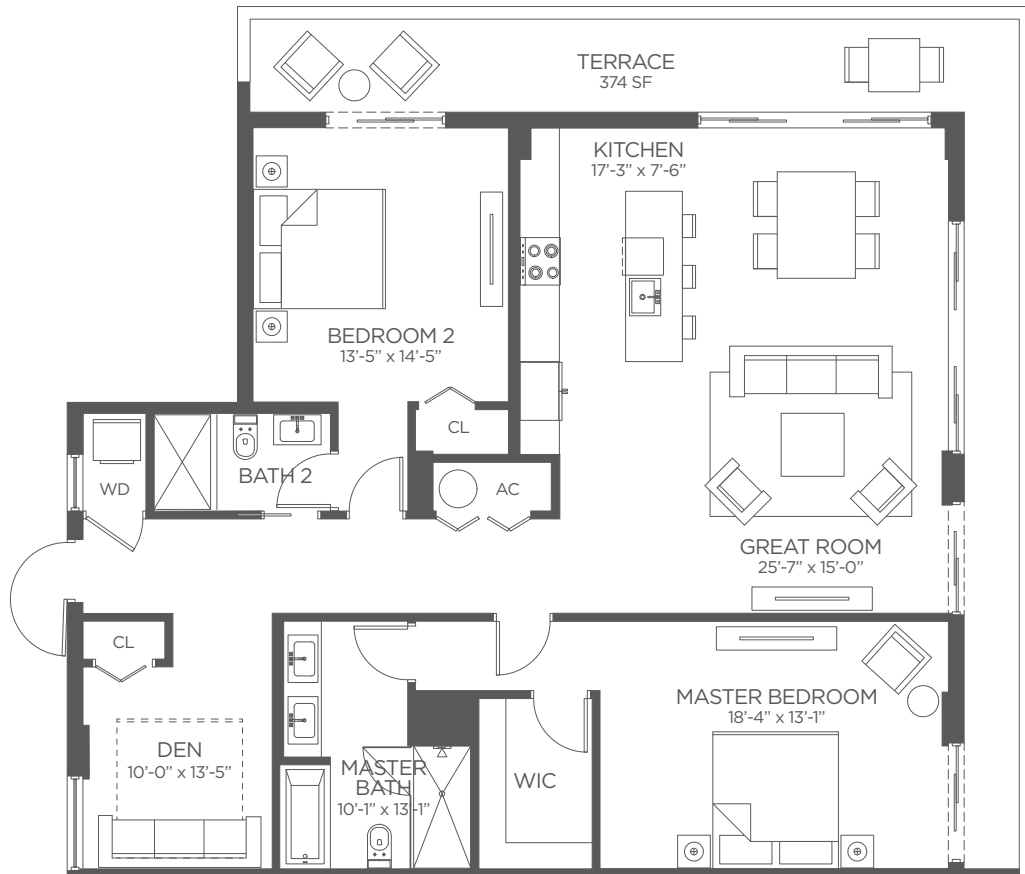
Living Area 2,005 SF | 186 m<sup>2</sup>

Terrace 389 SF | 36 m<sup>2</sup>

**Total Area 2,394 SF | 222 m<sup>2</sup>**



92ND STREET



**UNIT 304 & 404 | MODEL D**

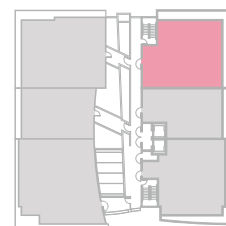
2 Bedrooms | 2 Baths

+ Den (Convertible)

Living Area 1,777 SF | 165 m<sup>2</sup>

Terrace 374 SF | 35 m<sup>2</sup>

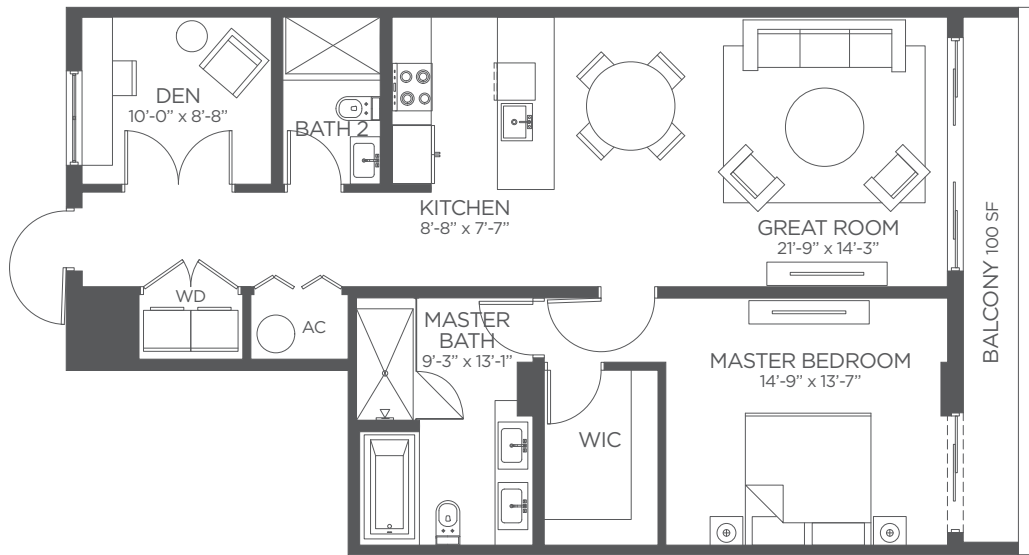
**Total Area 2,151 SF | 200 m<sup>2</sup>**



92ND STREET

# Sophie

BAY HARBOR



## UNIT 305 & 405 | MODEL E

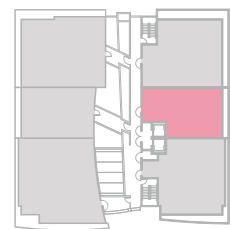
1 Bedroom | 2 Baths

+ Den

Living Area 1,201 SF | 112 m<sup>2</sup>

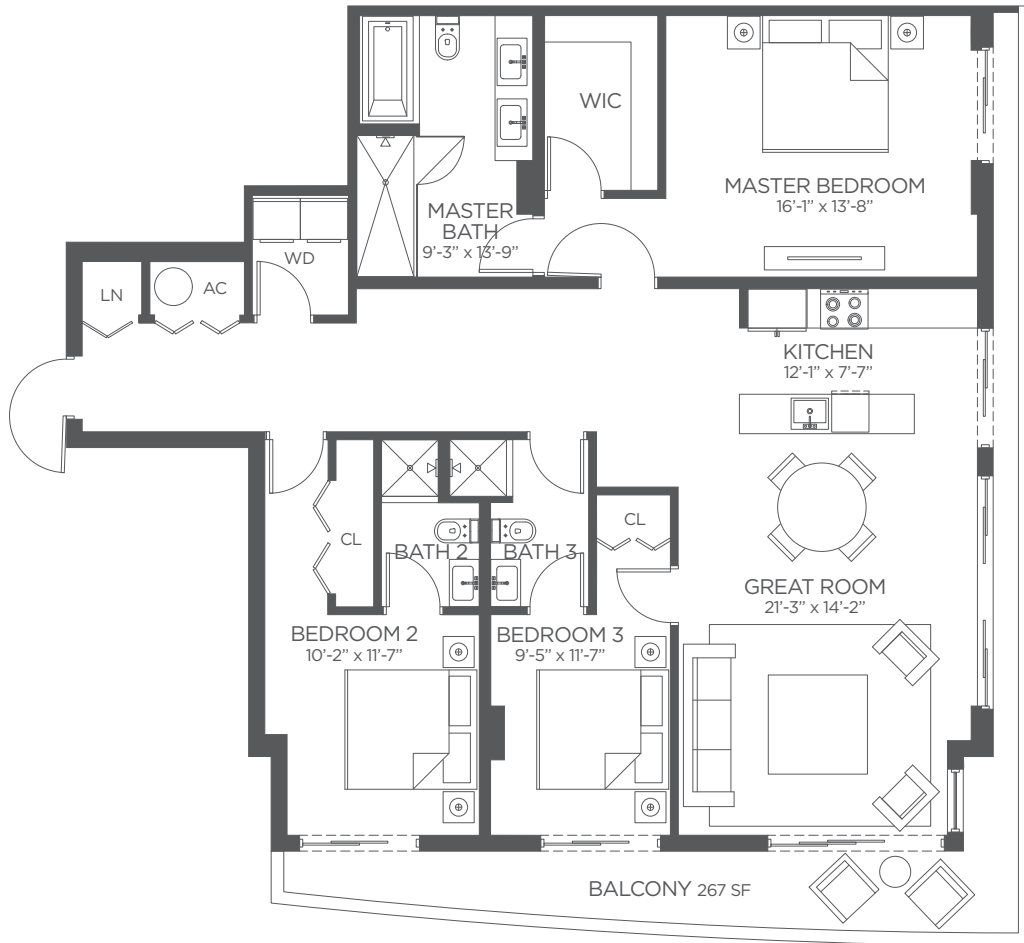
Terrace 100 SF | 9 m<sup>2</sup>

**Total Area 1,301 SF | 121 m<sup>2</sup>**



92ND STREET

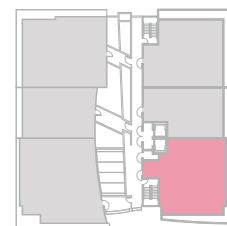
This offering is subject to errors, omissions, prior sale, change of price, or withdrawal without notice, and not intended to solicit currently listed property. This is not an offer to sell or solicitation of offers to buy condominium units in states where such offer or solicitation cannot be made. Prices, plans, and specifications are subject to change without notice. Void in states where prohibited. Additional restrictions may apply. Artist's conceptual renderings. ORAL REPRESENTATION CANNOT BE RELIED UPON AS CORRECTLY STATING THE REPRESENTATIONS OF THE DEVELOPER. FOR CORRECT REPRESENTATIONS, MAKE REFERENCE TO THE DOCUMENTS REQUIRED BY SECTION 718.503, FLORIDA STATUTES, TO BE FURNISHED BY A DEVELOPER TO A BUYER OR LESSEE. Plans, materials and specifications are subject to architectural and other revisions at the sole discretion of the developer, builder or architect, or as may be required by law. Floor plans shown are not to any particular scale. All dimensions are measured to the exterior boundaries of the exterior walls, corridor walls and to the centerline of interior demising walls and may vary from the description and definition of the "unit" set forth in the declaration. All dimensions are approximate, and all floor plans and development plans are subject to change.



**UNIT 306 & 406 | MODEL F**

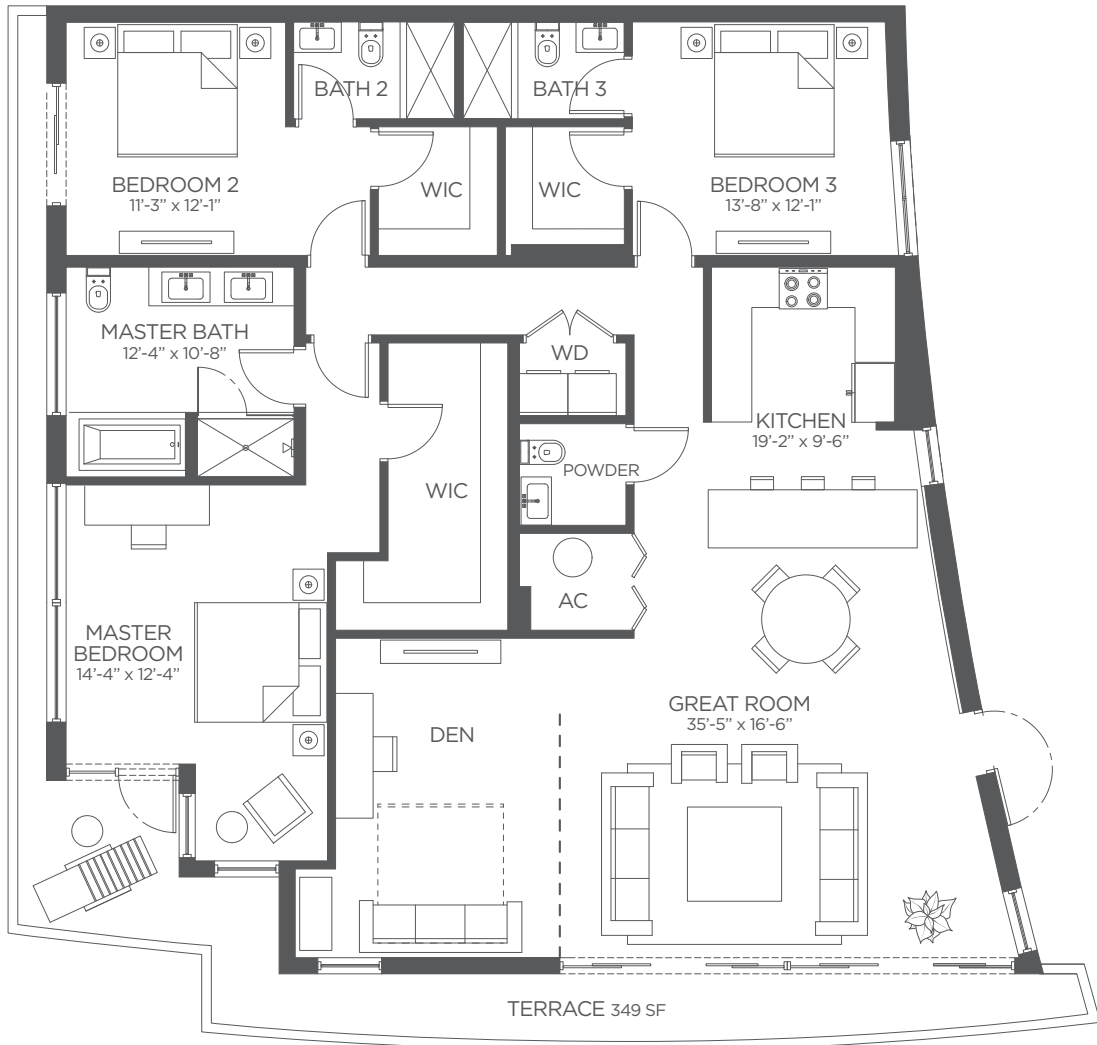
3 Bedrooms | 3 Baths

Living Area	1,789 SF   166 m <sup>2</sup>
Terrace	267 SF   25 m <sup>2</sup>
<b>Total Area</b>	<b>2,056 SF   191 m<sup>2</sup></b>



92ND STREET

This offering is subject to errors, omissions, prior sale, change of price, or withdrawal without notice, and not intended to solicit currently listed property. This is not an offer to sell or solicitation of offers to buy condominium units in states where such offer or solicitation cannot be made. Prices, plans, and specifications are subject to change without notice. Void in states where prohibited. Additional restrictions may apply. Artist's conceptual renderings. ORAL REPRESENTATION CANNOT BE RELIED UPON AS CORRECTLY STATING THE REPRESENTATIONS OF THE DEVELOPER. FOR CORRECT REPRESENTATIONS, MAKE REFERENCE TO THE DOCUMENTS REQUIRED BY SECTION 718.503, FLORIDA STATUTES, TO BE FURNISHED BY A DEVELOPER TO A BUYER OR LESSEE. Plans, materials and specifications are subject to architectural and other revisions at the sole discretion of the developer, builder or architect, or as may be required by law. Floor plans shown are not to any particular scale. All dimensions are measured to the exterior boundaries of the exterior walls, corridor walls and to the centerline of interior demising walls and may vary from the description and definition of the "unit" set forth in the declaration. All dimensions are approximate, and all floor plans and development plans are subject to change.



## UNIT 501 | MODEL G

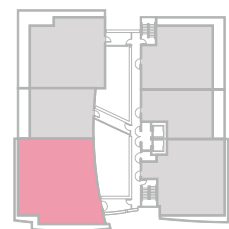
3 Bedrooms | 3.5 Baths

+ Den (Convertible)

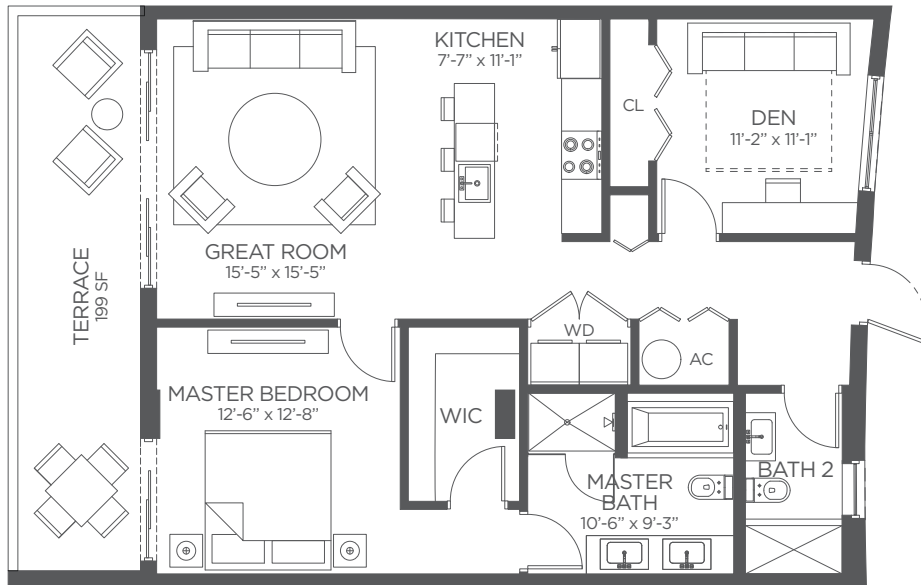
Living Area 2,228 SF | 207 m<sup>2</sup>

Terrace 349 SF | 32 m<sup>2</sup>

**Total Area 2,577 SF | 239 m<sup>2</sup>**



92ND STREET



**UNIT 502 | MODEL H**

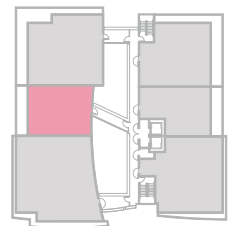
1 Bedroom | 2 Baths

+ Den

Living Area 1,108 SF | 103 m<sup>2</sup>

Terrace 199 SF | 18 m<sup>2</sup>

**Total Area 1,307 SF | 121 m<sup>2</sup>**

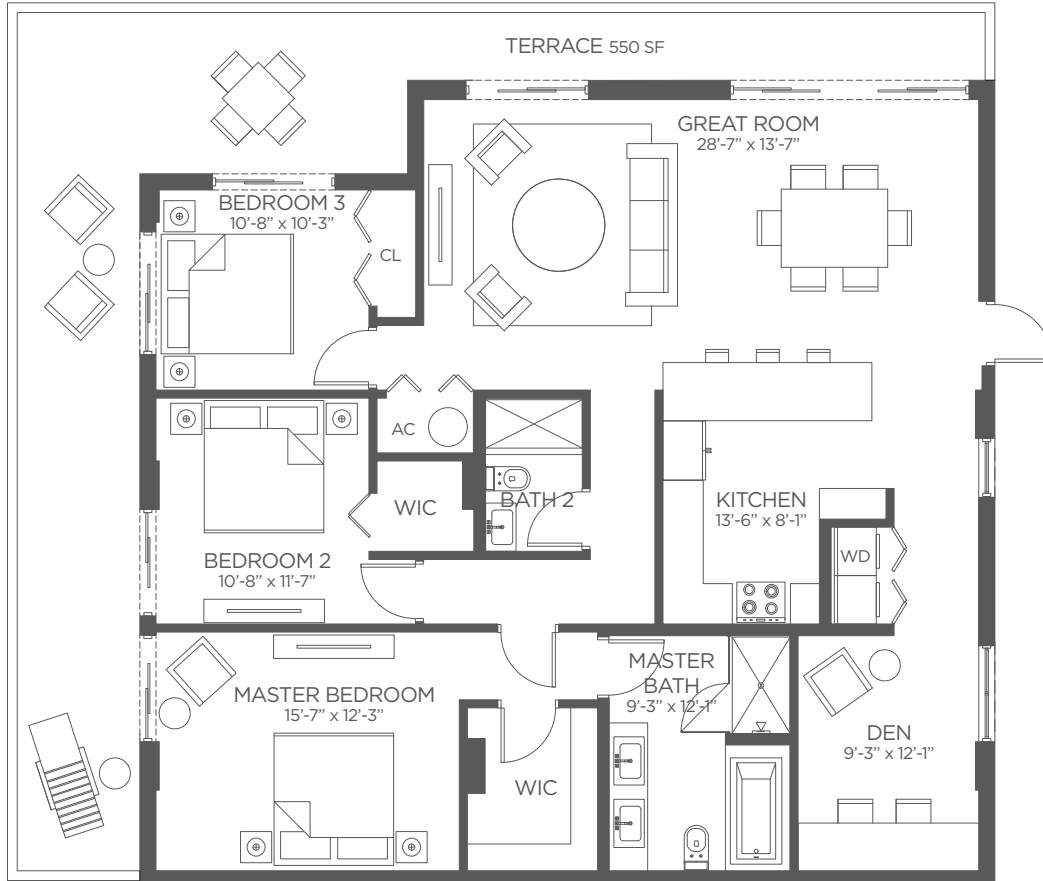


92ND STREET



This offering is subject to errors, omissions, prior sale, change of price, or withdrawal without notice, and not intended to solicit currently listed property. This is not an offer to sell or solicitation of offers to buy condominium units in states where such offer or solicitation cannot be made. Prices, plans, and specifications are subject to change without notice. Void in states where prohibited. Additional restrictions may apply. Artist's conceptual renderings. ORAL REPRESENTATION CANNOT BE RELIED UPON AS CORRECTLY STATING THE REPRESENTATIONS OF THE DEVELOPER. FOR CORRECT REPRESENTATIONS, MAKE REFERENCE TO THE DOCUMENTS REQUIRED BY SECTION 718.503, FLORIDA STATUTES, TO BE FURNISHED BY A DEVELOPER TO A BUYER OR LESSEE. Plans, materials and specifications are subject to architectural and other revisions at the sole discretion of the developer, builder or architect, or as may be required by law. Floor plans shown are not to any particular scale. All dimensions are measured to the exterior boundaries of the exterior walls, corridor walls and to the centerline of interior demising walls and may vary from the description and definition of the "unit" set forth in the declaration. All dimensions are approximate, and all floor plans and development plans are subject to change.





## UNIT 503 | MODEL I

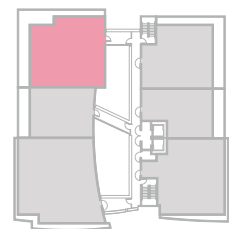
3 Bedrooms | 2 Baths

+ Den (Convertible)

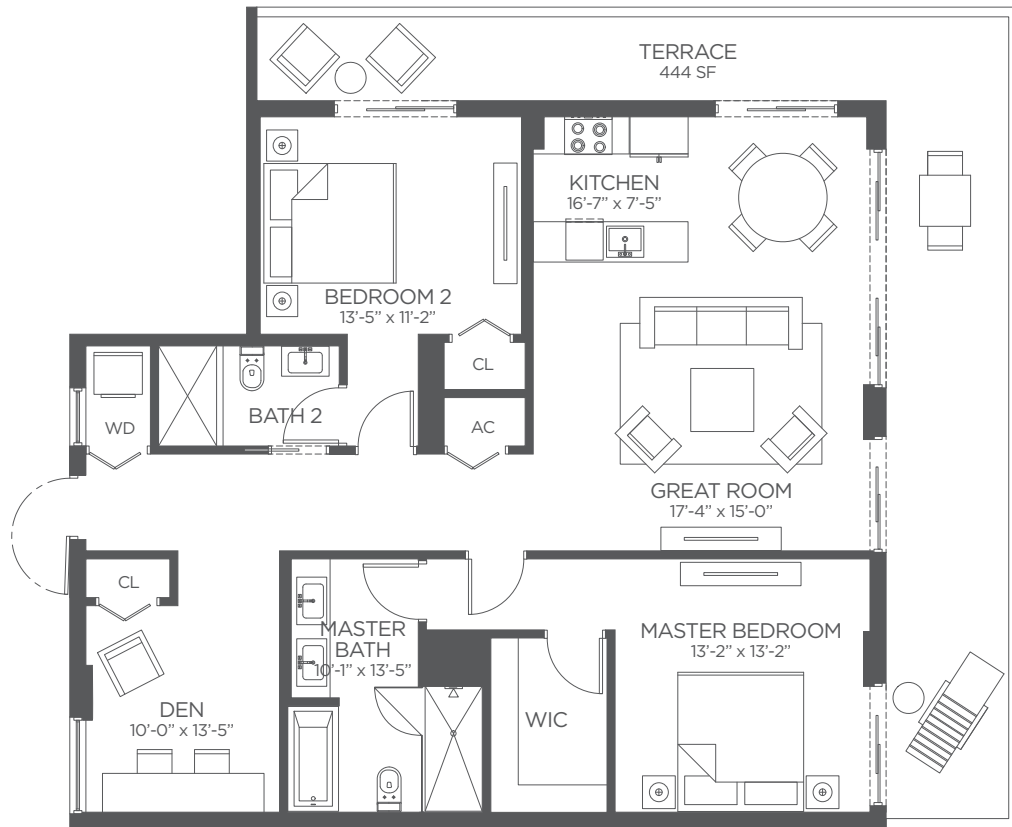
Living Area 1,751 SF | 163 m<sup>2</sup>

Terrace 550 SF | 51 m<sup>2</sup>

**Total Area 2,301 SF | 214 m<sup>2</sup>**



92ND STREET



## UNIT 504 | MODEL J

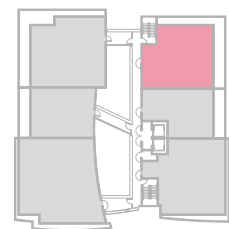
2 Bedrooms | 2 Baths

+ Den

Living Area 1,451 SF | 135 m<sup>2</sup>

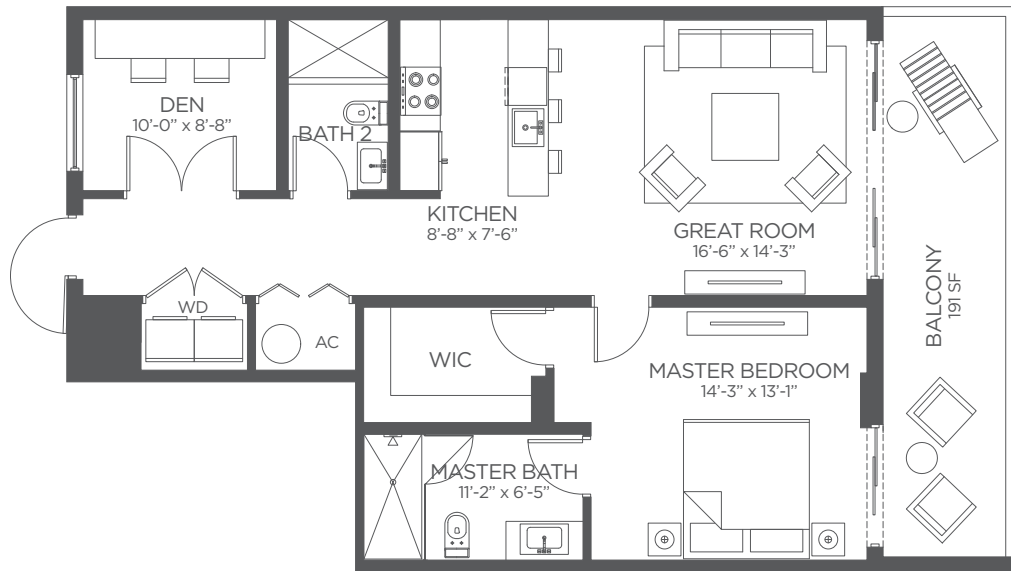
Terrace 444 SF | 41 m<sup>2</sup>

**Total Area 1,895 SF | 176 m<sup>2</sup>**



92ND STREET





## UNIT 505 | MODEL K

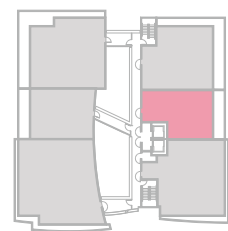
1 Bedroom | 2 Baths

+ Den

Living Area 1,051 SF | 98 m<sup>2</sup>

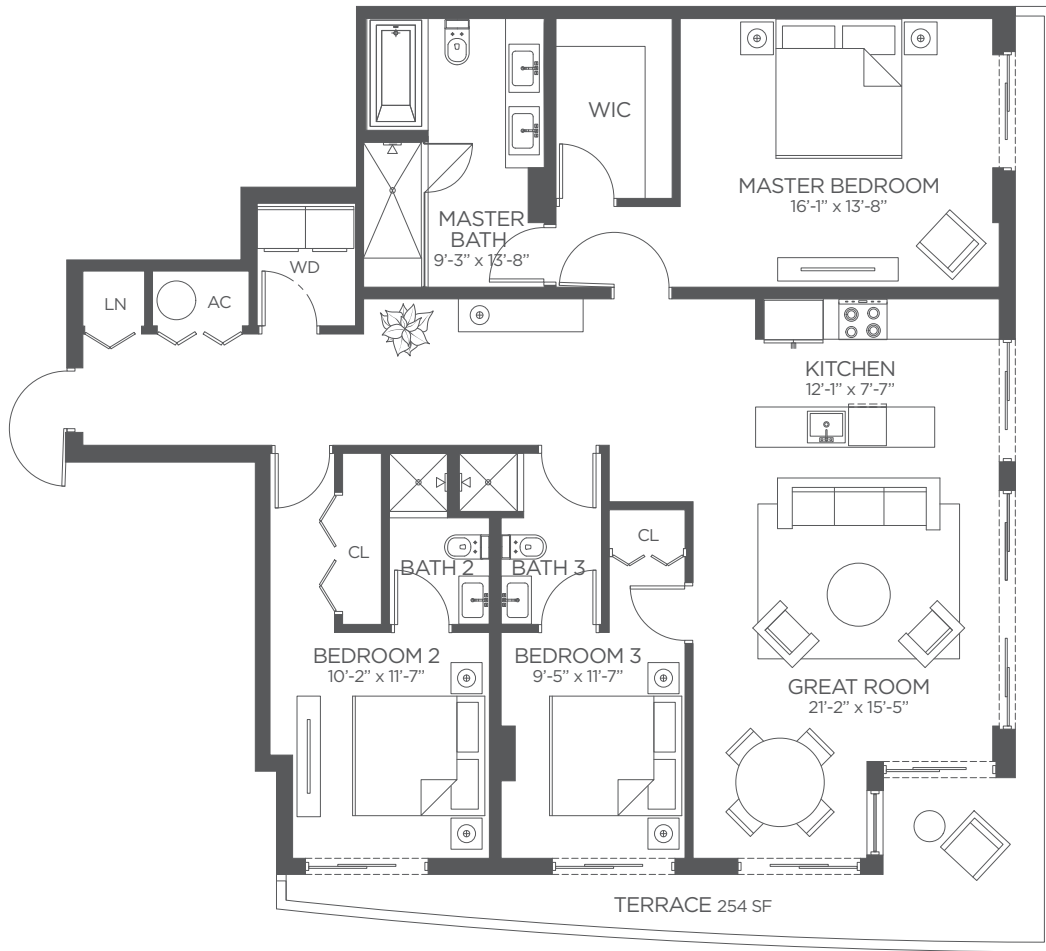
Terrace 191 SF | 18 m<sup>2</sup>

**Total Area 1,242 SF | 115 m<sup>2</sup>**



92ND STREET

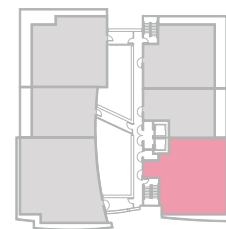




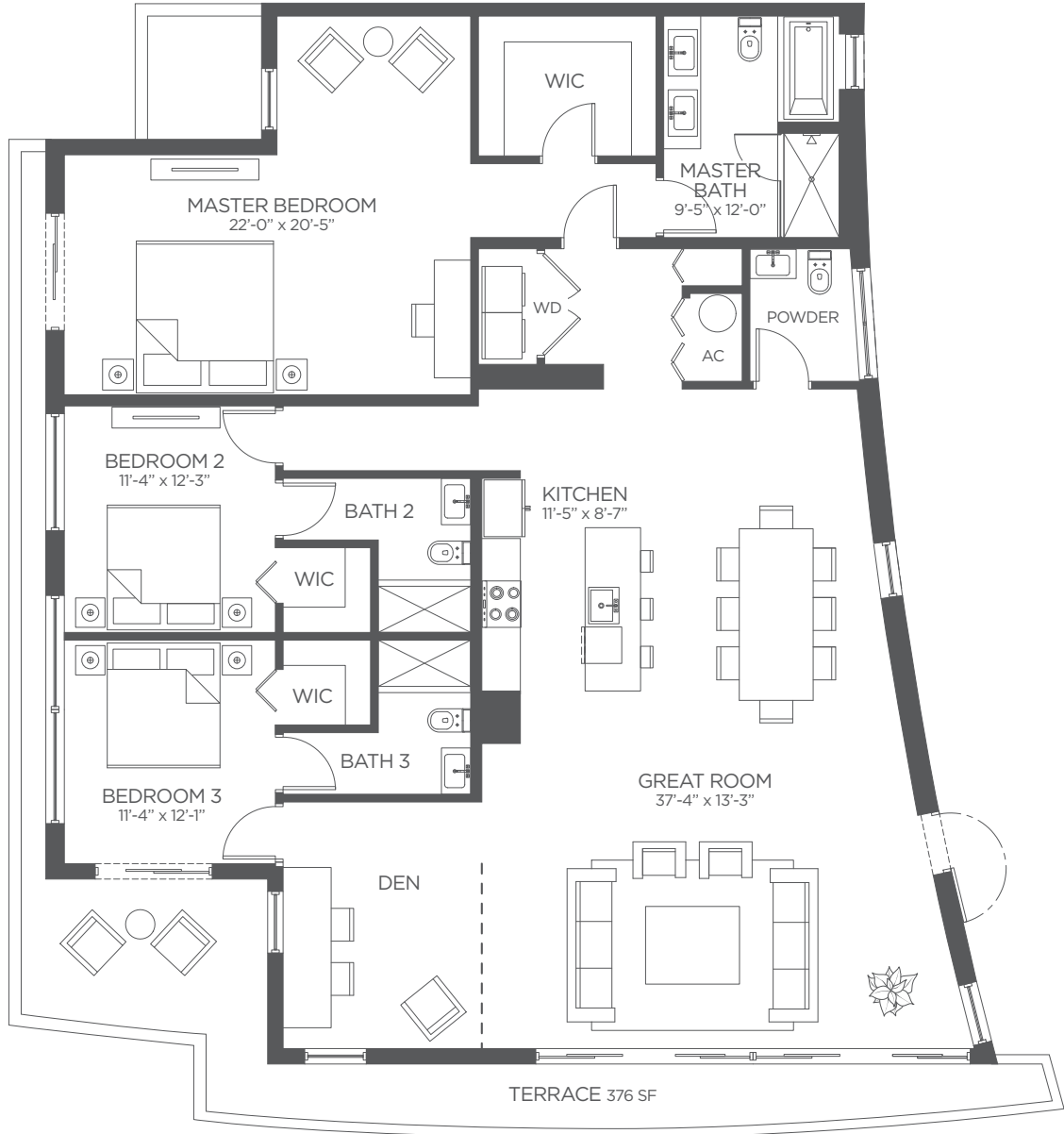
## UNIT 506 | MODEL L

3 Bedrooms | 3 Baths

Living Area	1,763 SF   164 m <sup>2</sup>
Terrace	254 SF   24 m <sup>2</sup>
<b>Total Area</b>	<b>2,017 SF   187 m<sup>2</sup></b>



92ND STREET



## UNIT 601 | MODEL M

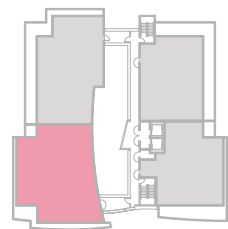
3 Bedroom | 3.5 Baths

+ Den (Convertible)

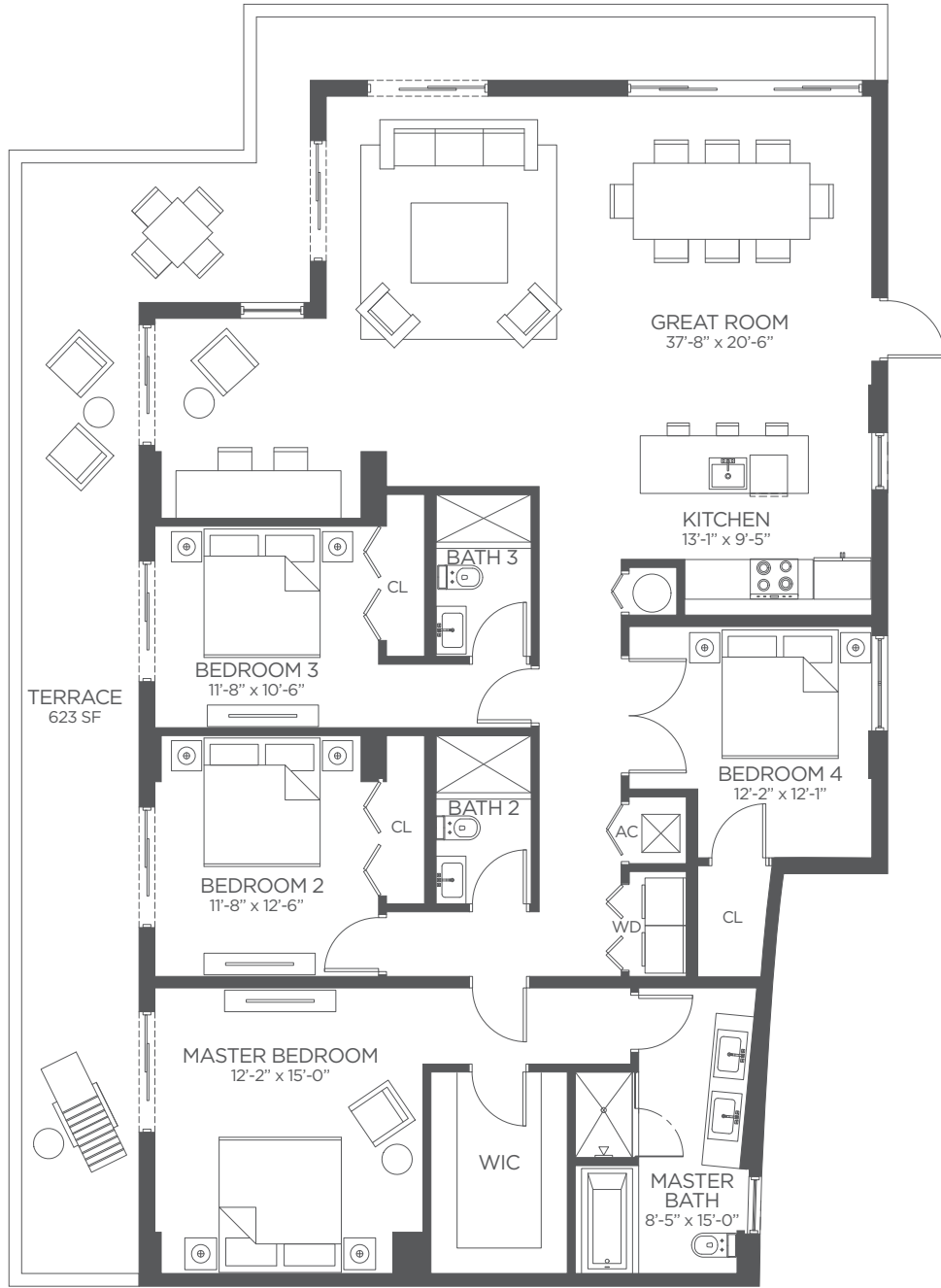
Living Area 2,453 SF | 228m<sup>2</sup>

Terrace 376 SF | 35m<sup>2</sup>

**Total Area 2,829 SF | 263m<sup>2</sup>**



92ND STREET



## UNIT 602 | MODEL N

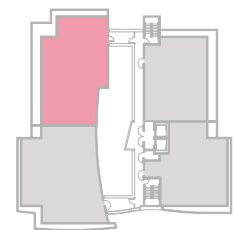
4 Bedrooms | 3 Baths

+ Den

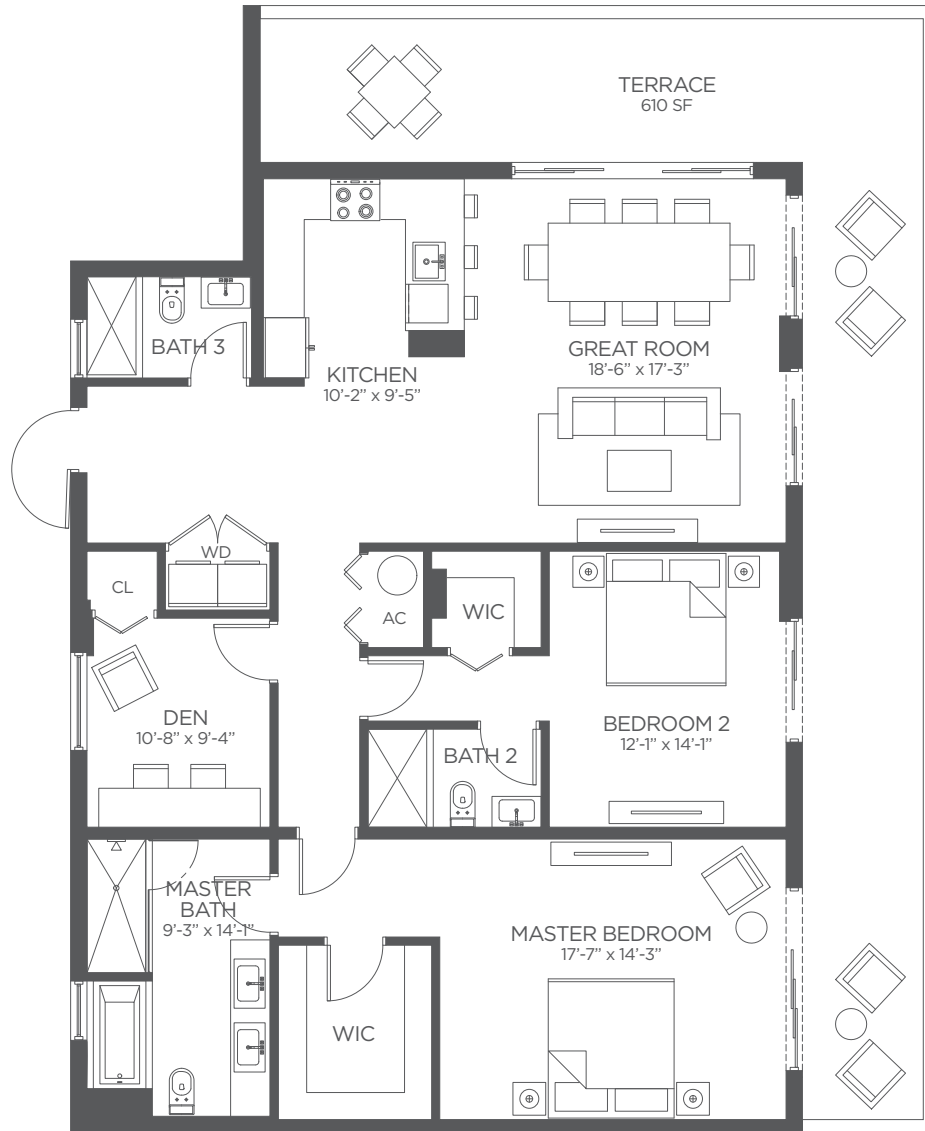
Living Area 2,239 SF | 208m<sup>2</sup>

Terrace 623 SF | 58m<sup>2</sup>

**Total Area 2,862 SF | 266m<sup>2</sup>**



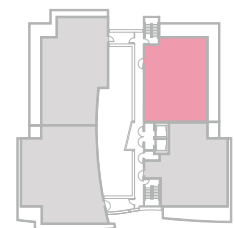
92ND STREET



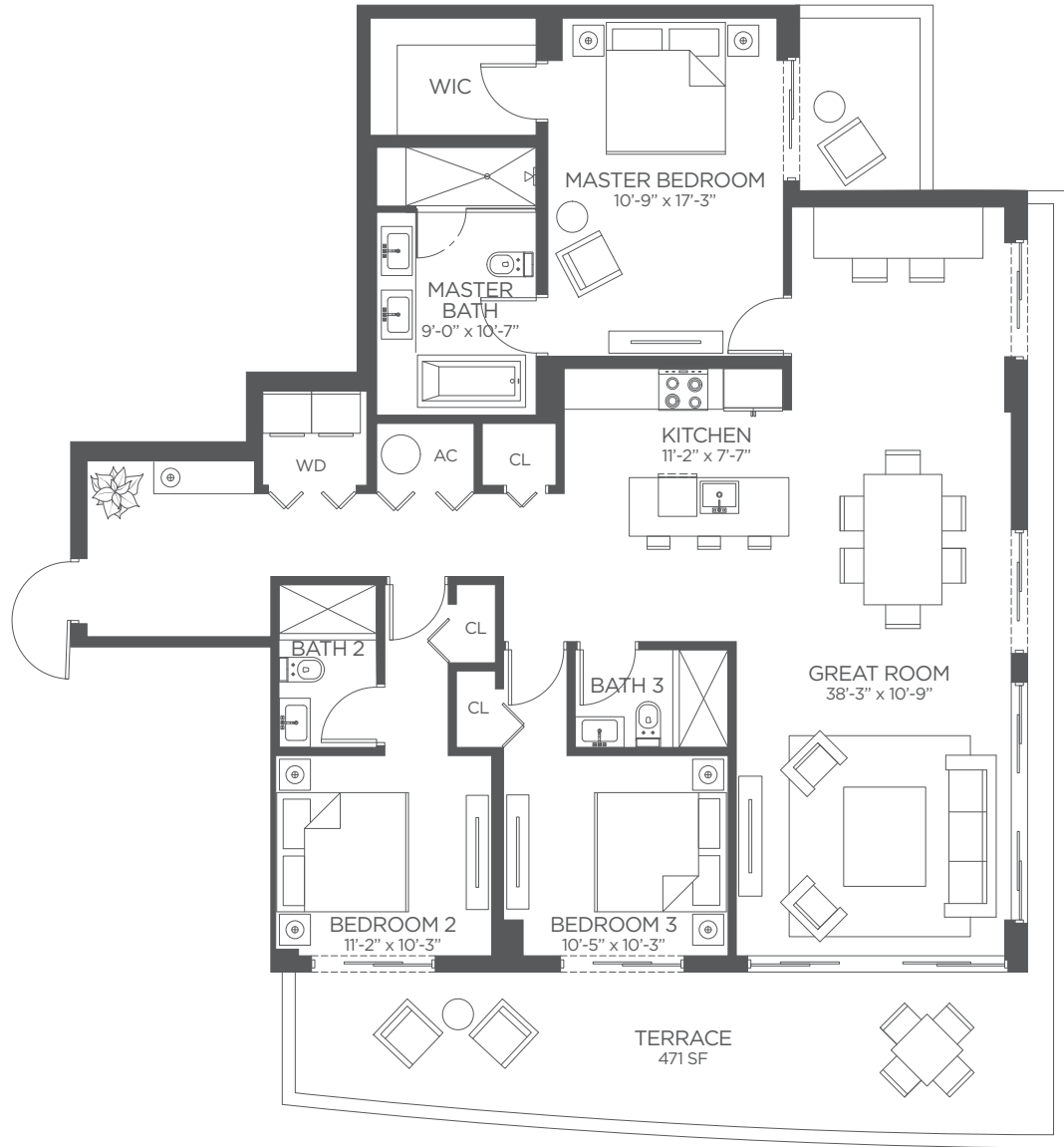
## UNIT 603 | MODEL O

3 Bedroom | 3 Baths

Living Area	1,787 SF   166 m <sup>2</sup>
Terrace	610 SF   57 m <sup>2</sup>
<b>Total Area</b>	<b>2,397 SF   223 m<sup>2</sup></b>



92ND STREET



## UNIT 604 | MODEL P

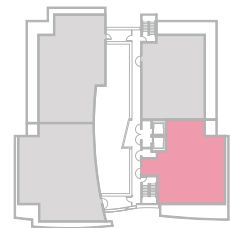
3 Bedrooms | 3 Baths

+ Den

Living Area 1,831 SF | 170 m<sup>2</sup>

Terrace 471 SF | 44m<sup>2</sup>

**Total Area 2,302 SF | 214 m<sup>2</sup>**



92ND STREET



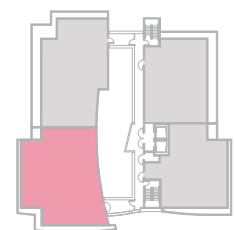


## PENTHOUSE 01 | MODEL Q

3 Bedroom | 3.5 Baths

+ Den (Convertible)

Living Area	2,453 SF   228 m <sup>2</sup>
Terrace	331 SF   31 m <sup>2</sup>
Private Roof Terrace	443 SF   41 m <sup>2</sup>
<b>Total Area</b>	<b>2,784 SF   259 m<sup>2</sup></b>



92ND STREET

This offering is subject to errors, omissions, prior sale, change of price, or withdrawal without notice, and not intended to solicit currently listed property. This is not an offer to sell or solicitation of offers to buy condominium units in states where such offer or solicitation cannot be made. Prices, plans, and specifications are subject to change without notice. Void in states where prohibited. Additional restrictions may apply. Artist's conceptual renderings. ORAL REPRESENTATION CANNOT BE RELIED UPON AS CORRECTLY STATING THE REPRESENTATIONS OF THE DEVELOPER. FOR CORRECT REPRESENTATIONS, MAKE REFERENCE TO THE DOCUMENTS REQUIRED BY SECTION 718.503, FLORIDA STATUTES, TO BE FURNISHED BY A DEVELOPER TO A BUYER OR LESSEE. Plans, materials and specifications are subject to architectural and other revisions at the sole discretion of the developer, builder or architect, or as may be required by law. Floor plans shown are not to any particular scale. All dimensions are measured to the exterior boundaries of the exterior walls, corridor walls and to the centerline of interior demising walls and may vary from the description and definition of the "unit" set forth in the declaration. All dimensions are approximate, and all floor plans and development plans are subject to change.

# Sophie

BAY HARBOR

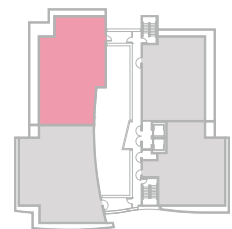


## PENTHOUSE 02 | MODEL R

4 Bedroom | 3 Baths

+ Den

Living Area	2,239 SF   208 m <sup>2</sup>
Terrace	549 SF   51 m <sup>2</sup>
Private Roof Terrace	401 SF   37 m <sup>2</sup>
<b>Total Area</b>	<b>2,788 SF   259 m<sup>2</sup></b>



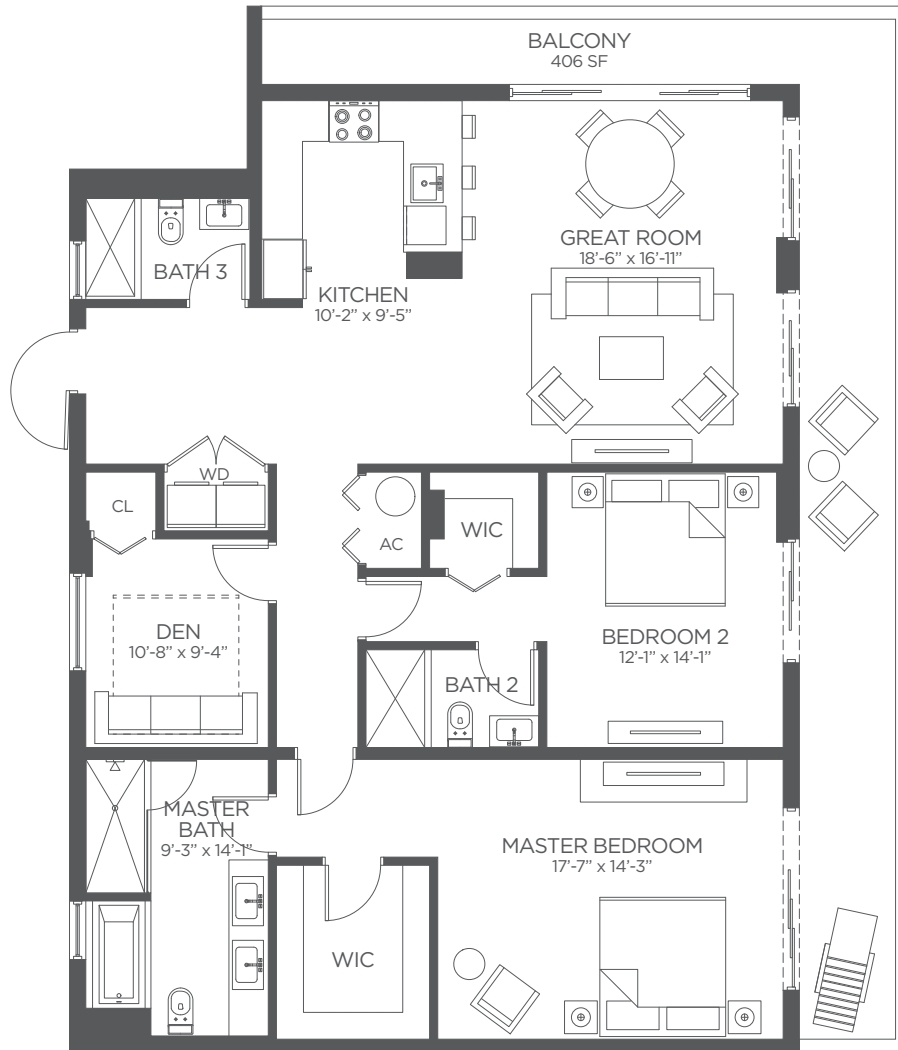
92ND STREET



This offering is subject to errors, omissions, prior sale, change of price, or withdrawal without notice, and not intended to solicit currently listed property. This is not an offer to sell or solicitation of offers to buy condominium units in states where such offer or solicitation cannot be made. Prices, plans, and specifications are subject to change without notice. Void in states where prohibited. Additional restrictions may apply. Artist's conceptual renderings. ORAL REPRESENTATION CANNOT BE RELIED UPON AS CORRECTLY STATING THE REPRESENTATIONS OF THE DEVELOPER. FOR CORRECT REPRESENTATIONS, MAKE REFERENCE TO THE DOCUMENTS REQUIRED BY SECTION 718.503, FLORIDA STATUTES, TO BE FURNISHED BY A DEVELOPER TO A BUYER OR LESSEE. Plans, materials and specifications are subject to architectural and other revisions at the sole discretion of the developer, builder or architect, or as may be required by law. Floor plans shown are not to any particular scale. All dimensions are measured to the exterior boundaries of the exterior walls, corridor walls and to the centerline of interior demising walls and may vary from the description and definition of the "unit" set forth in the declaration. All dimensions are approximate, and all floor plans and development plans are subject to change.

# Sophie

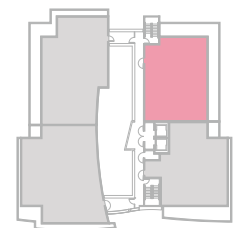
BAY HARBOR



## PENTHOUSE 03 | MODEL S

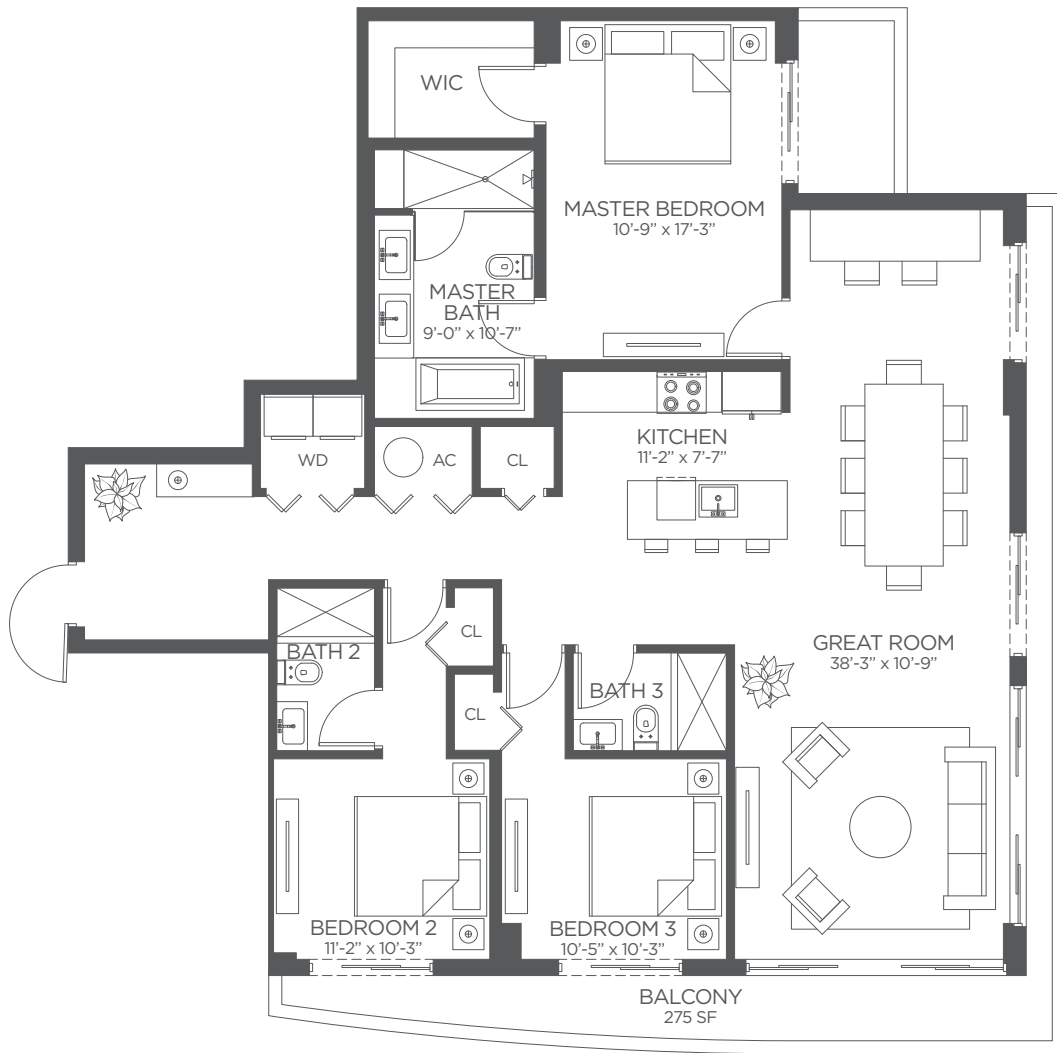
3 Bedroom | 3 Baths

Living Area	1,787 SF   166 m <sup>2</sup>
Terrace	406 SF   38 m <sup>2</sup>
<b>Total Area</b>	<b>2,193 SF   204 m<sup>2</sup></b>



92ND STREET

This offering is subject to errors, omissions, prior sale, change of price, or withdrawal without notice, and not intended to solicit currently listed property. This is not an offer to sell or solicitation of offers to buy condominium units in states where such offer or solicitation cannot be made. Prices, plans, and specifications are subject to change without notice. Void in states where prohibited. Additional restrictions may apply. Artist's conceptual renderings. ORAL REPRESENTATION CANNOT BE RELIED UPON AS CORRECTLY STATING THE REPRESENTATIONS OF THE DEVELOPER. FOR CORRECT REPRESENTATIONS, MAKE REFERENCE TO THE DOCUMENTS REQUIRED BY SECTION 718.503, FLORIDA STATUTES, TO BE FURNISHED BY A DEVELOPER TO A BUYER OR LESSEE. Plans, materials and specifications are subject to architectural and other revisions at the sole discretion of the developer, builder or architect, or as may be required by law. Floor plans shown are not to any particular scale. All dimensions are measured to the exterior boundaries of the exterior walls, corridor walls and to the centerline of interior demising walls and may vary from the description and definition of the "unit" set forth in the declaration. All dimensions are approximate, and all floor plans and development plans are subject to change.



## PENTHOUSE 04 | MODEL T

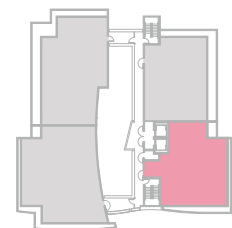
3 Bedrooms | 3 Baths

+ Den

Living Area 1,831 SF | 170 m<sup>2</sup>

Terrace 275 SF | 26m<sup>2</sup>

**Total Area 2,106 SF | 196 m<sup>2</sup>**



92ND STREET